



Purchasing Division
Finance Department
Room 120
411 West First Street
Duluth, Minnesota 55802

218-730-5340
purchasing@duluthmn.gov

Addendum No. 1
Solicitation 25-99575
Hillside Culvert Repairs Phase 2

This addendum serves to notify all bidders of the following changes to the solicitation documents:

1. The due date for submission has been moved to Wednesday, November 12, 2025 by 2:00PM CT.

The following are questions asked and their subsequent answers (answers in blue italic).

1. We are digging into the plans for the up-coming Tunnels. I am wondering if you have a G.I.S. drawing of the existing utilities crossing the site locations. We are just curious on if some of the utilities go over or under the tunnels itself. We noticed a steel main of some sort going through the ceiling at one location. The locations we are looking for some help on are - The intersection of West 1st street and North 12th Ave West, and In front of the Address of 1221 West 5th Street
 - a. *Attached to this addendum is a GIS picture of the area of 12th Ave W and W 1st St.*
 - i. *Crossing the Buckingham Creek tunnel (the cyan line on the map) from the north side to the south is the following:*
 - ii. *Red – 2” PE gas, goes over the tunnel.*
 - iii. *Cyan – storm pipe goes into catch basin, drops into the top of the tunnel.*
 - iv. *Red – 8” PE gas pipe in 12” ductile iron casing goes over the top of the tunnel.*
 - v. *Green – 8” clay tile sanitary sewer goes under the tunnel*
 - vi. *Blue – 16” cast iron water. We don’t have a profile of this, assumed to go over the top of the tunnel.*
 - vii. *Blue – 36” cast iron water, goes over the top of the tunnel.*
 - b. *For the area near 1221 W 5th St, attached to this addendum is the plan from 1974 when this area was reconstructed last.*
 - c. *All utilities go over the top of the tunnel. There is a storm pipe that drops into the top of the tunnel from the street.*

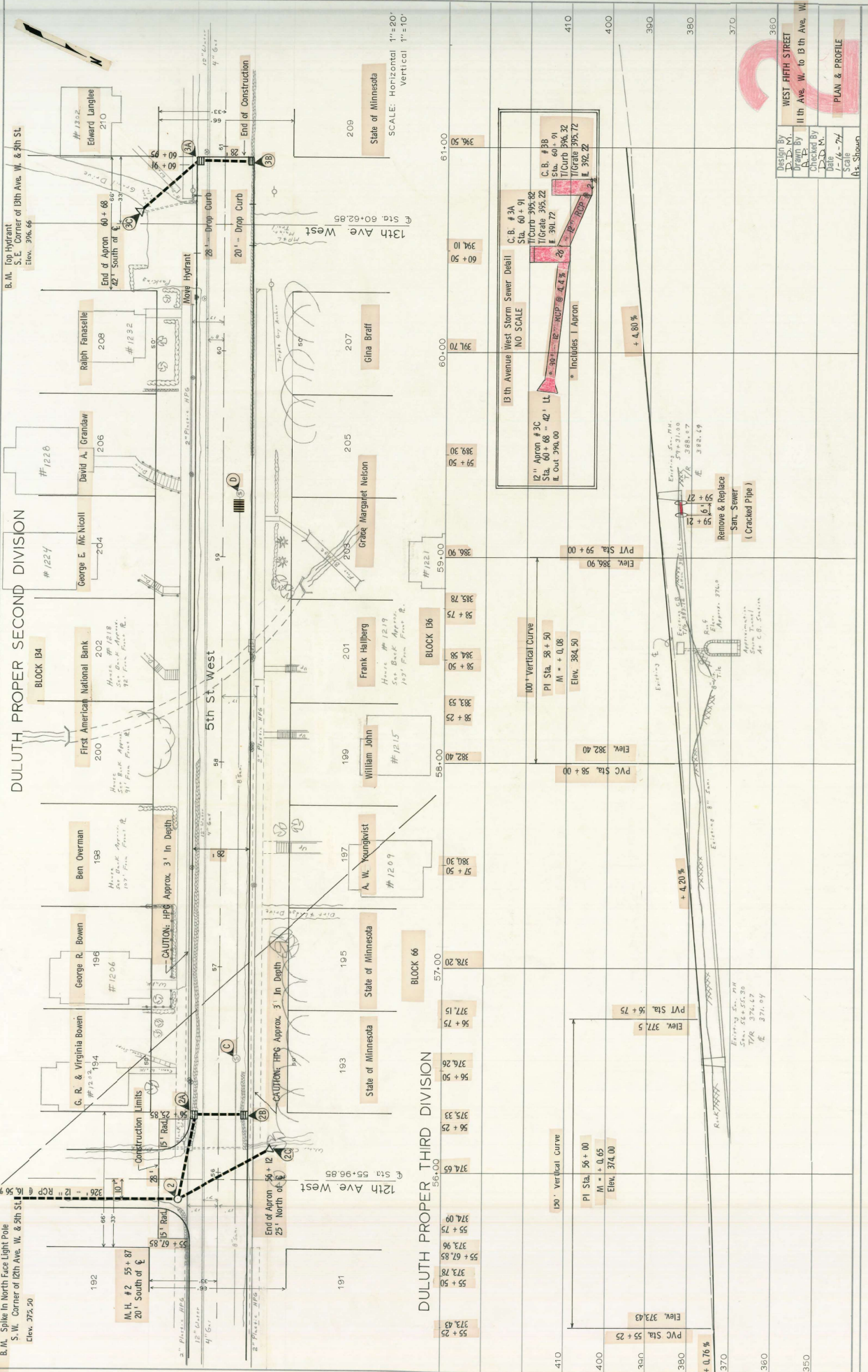
Please acknowledge receipt of this Addendum by checking the acknowledgement box within the www.bidexpress.com solicitation.

Posted: **October 30, 2025**

DULUTH PROPER SECOND DIVISION

B. M. Soling In North Face Light Pole
S.W. Corner of 12th Ave. W. & 3th St.
Elev. 372.50

B. M. Top Hydrant
S.E. Corner of 13th Ave. W. & 4th St.
Elev. 396.66



DULUTH PROPER THIRD DIVISION

12th Ave West
Elev. 55+96.85

13th Ave. West
Elev. 60+62.85

State of Minnesota
SCALE: Horizontal 1"=20'
Vertical 1"=10'

Design By: D.S.M.
Checked By: A.V.
Date: 1-16-74
Scale: As Shown

WEST HIGH STREET
11th Ave. W. to 13th Ave. W.
PLAN & PROFILE