



The City of Duluth

HEALTHY WATER HABITS

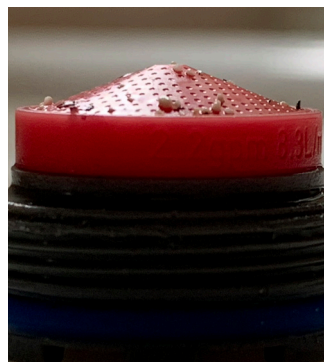


IMPORTANCE OF AERATOR CLEANING

Cleaning faucet aerators at least twice per year and after disruptions in water service is important for maintaining the high quality City of Duluth Water that is delivered to your home.

Aerator screens are made of metal or plastic and attach to the end of the faucet. They enhance flow by dividing the water into dozens of tiny streams. During normal use aerators may accumulate tiny particles of sediment that have corroded from inside your home's plumbing and hot water tank.

During construction activities, more small particles of solder and other material than normal may dislodge from pipes and collect in faucet aerators. In cases where homes have lead service lines or plumbing, these particles may contain lead. Cleaning all faucet aerators is a critical step in protecting your family from potential lead exposure.



“Clean. Flush. Consume Cold. Filter.” are the actions all customers should always practice to help ensure the highest quality of water is coming out of your tap.



CLEAN

Clean your faucet aerator screens regularly. Small particles of solder and other material can accumulate in faucet aerators and in some circumstances can release lead into the water. Aerators should be cleaned at least twice a year, and more frequently after work is done to your plumbing system.



FLUSH

Flush your cold water lines before water is used for drinking or cooking. The goal is to have cold, fresh water from the main in the street come out of your tap before drinking the water. To flush the plumbing, run water until you feel a temperature change then run water for an additional 30 seconds to 3 minutes. The time depends on the length and diameter of your service line. The farther your home is from the street, the longer you need to flush. When in doubt, flush it out.



CONSUME COLD

Always use cold water for cooking, drinking and preparing baby formula. Hot water corrodes pipes faster and is more likely to contain lead. If you need hot water for food or drinks, get water from the cold water tap then heat the water.



FILTER

Filtering your water using an NSF certified standard 53 filter rated for lead removal will reduce your exposure to lead in the drinking water. Locations with a lead service line are eligible for a free water pitcher filter through the Lead Removal Program.

Concerned about lead in your drinking water?

Please visit <https://duluthmn.gov/public-works-utilities/lead-water-education/lead-water/> for more information:

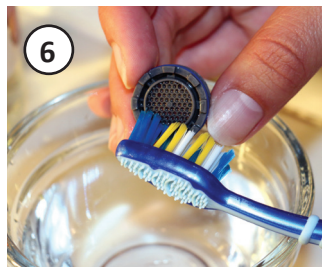
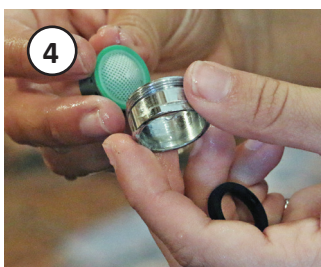
- i. Determine if your service line is lead
- ii. Water Pitcher filter program
- iii. Water testing for lead
- iv. Lead Service Line Replacement

Contact us at our email:

leadremoval@duluthmn.gov, or by phone at 218-730-5101.

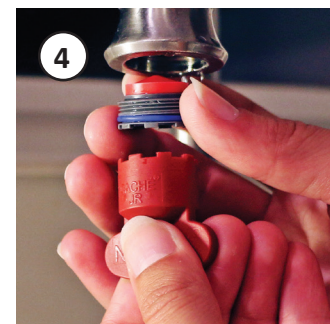
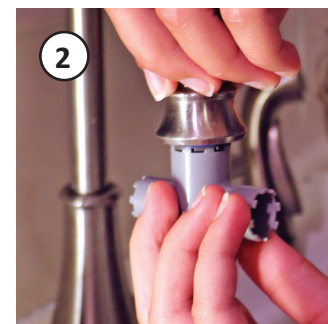
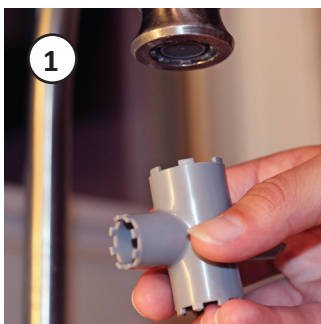
How To Clean Aerators

STANDARD AERATORS SCREW ON TO THE TIP OF THE FAUCET



1. Unscrew your standard aerator. Soaking the tip in a small bag of white vinegar will remove scale buildup if the aerator cannot be easily unscrewed.
2. If your aerator is recessed, you may need to remove it with a wrench. A plastic faucet aerator wrench (2a) is specifically designed for this purpose. Care must be taken if using a metal wrench so you don't damage the fixture.
3. Remove the screen from inside the faucet tip.
4. Separate the parts of the aerator and lay them on the counter in the order they came apart.
5. Rinse all parts of the screen with water.
6. If residue has accumulated on the screen or housing, soak the aerator parts in white vinegar for 20 minutes. Scrub all parts with a small clean brush then rinse with water.
7. Reassemble the aerator, reattach it to the faucet, and test the faucet to ensure you installed it correctly. Do not overtighten.

CACHE AERATORS ARE INSERTED INTO THE TIP OF THE FAUCET



1. To remove a cache aerator, determine which key size fits. Keys can be purchased online or at some hardware stores.
2. Insert the key's notches into the aerator's grooves.
3. Turn the key to unscrew the aerator. If you are looking down at the top of the faucet, turn the key clockwise. If you are looking up at the aerator, turn the aerator left (counter-clockwise) to loosen. Soak the faucet tip in small bag of vinegar if it does not easily unscrew.
4. Once the aerator screen and housing are removed from the faucet, clean then reassemble.

What happens if my aerator won't clean?

For all aerators, if your screen does not come clean or if any parts are degrading or broken, do not reinsert the screen into your faucet. You should use your faucet without the aerator until you purchase a new screen at your local hardware store or online.

Lead Removal Program Contact Info

Phone: 218-730-5101

Email: leadremoval@duluthmn.gov

Website: <https://duluthmn.gov/public-works-utilities/lead-water-education/lead-water/>