

# LSZ MAIN BUILDING

## PREDESIGN STUDY

---

Parks & Recreation Commission Presentation  
June 11, 2025













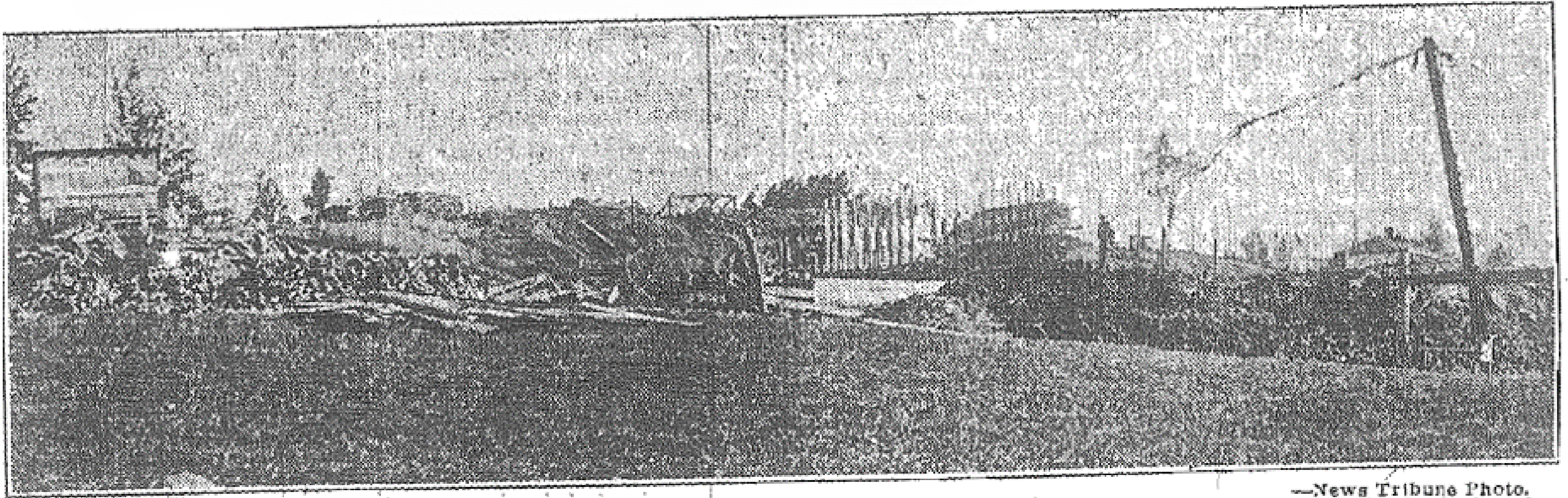
# WHY NOW?

A building at a crossroads





## WORK PROGRESSES ON NEW ANIMAL BUILDING AT ZOO



—News Tribune Photo.

Work on the brick building in the Duluth zoological gardens, Fairmount park, which will house birds and animals during the winter months, is progressing rapidly, as shown by the picture above. The building will be steam heated and will provide special cages and water pools for those species of wild life which require warmth. The building is costing approximately \$30,000.













# THE PROCESS





# **BUILDING, FACILITIES & SITE ASSESSMENT/SURVEY**

Feasibility report

## **SPACE NEEDS PROGRAMMING**

Programming report, prelim programming diagrams, attendance analysis

## **CONCEPT DESIGN & SUSTAINABLE FEATURES**

Three concept plan options with site plans

## **Presentation to city administration**

Approved to moved forward with Axolotl Concept





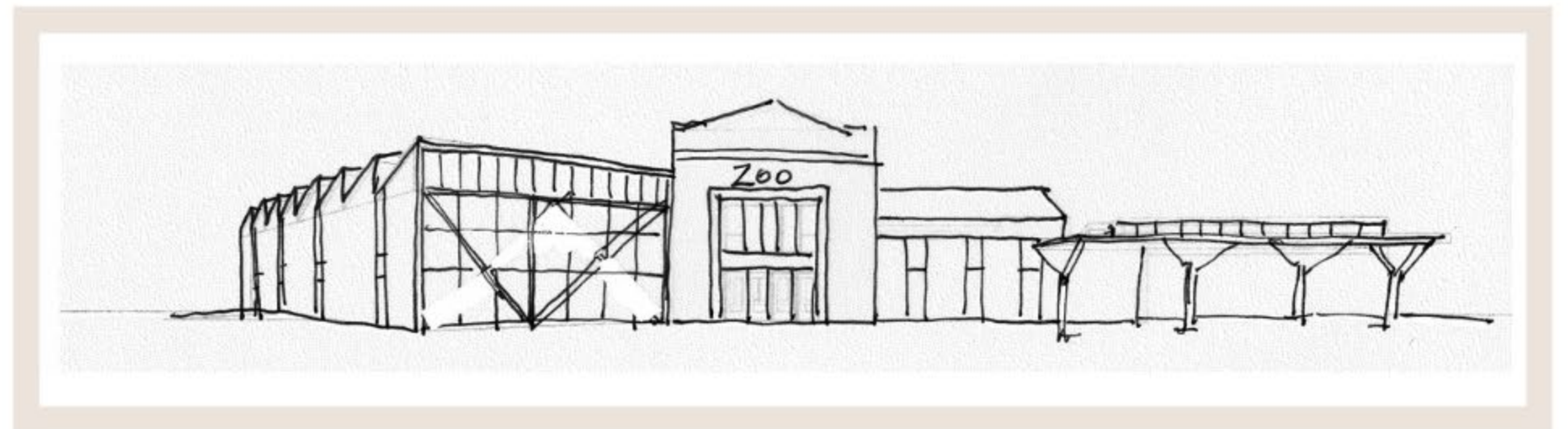
**OPTION A | AXOLOTL**



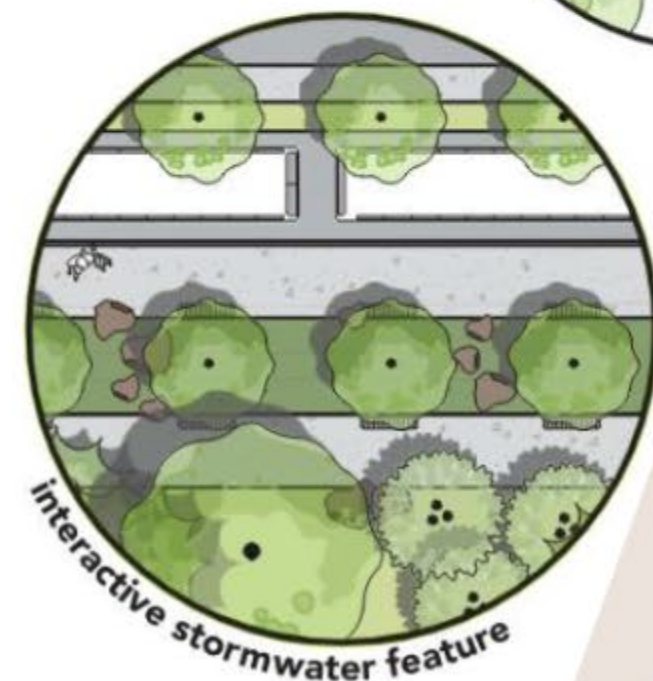
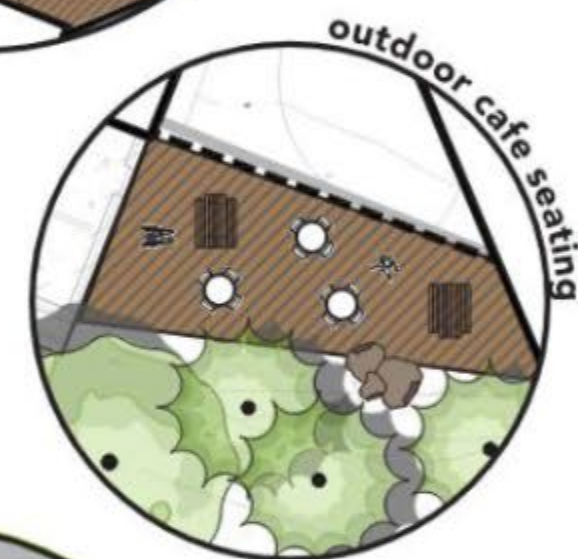


## A | AXOLOTL

This design concept considers rehabbing the existing building and expanding outward with much needed program expansions and separation between public and private areas. The existing canopy is removed and the old façade is enhanced for a welcoming new entry to the Main Building. A large expansion angles off to the east in place of the existing Griggs Hall. This new wing is intended as the main connection to the rest of the zoo and guests circulate toward the end of the wing and down to the lower level. A new central stair in the existing building improves flow to different functions and is another option for accessing animal and play areas on the lower level. The expansion on the west side is intended more for offices, admin space and classrooms on the lower level.

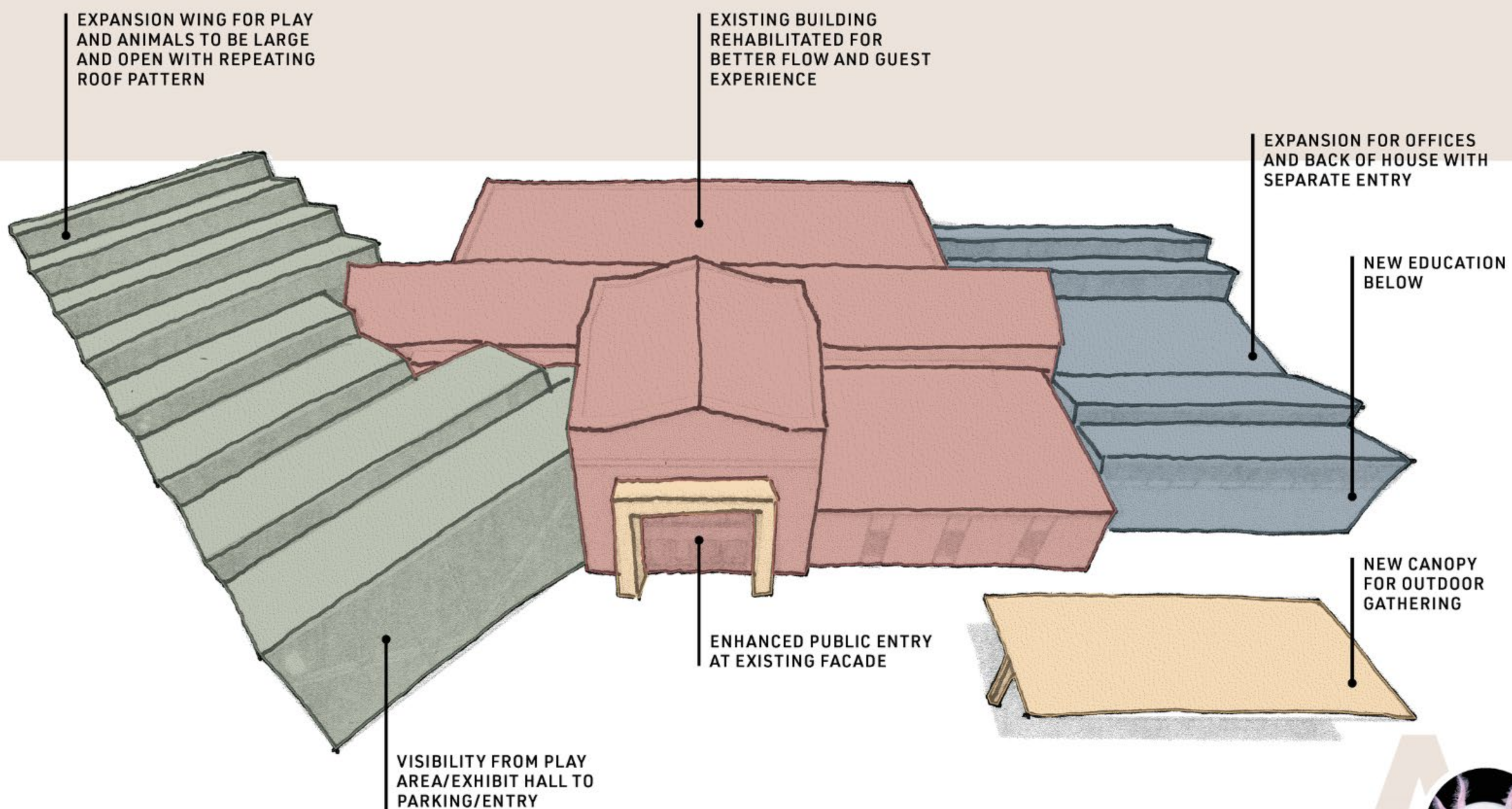






A

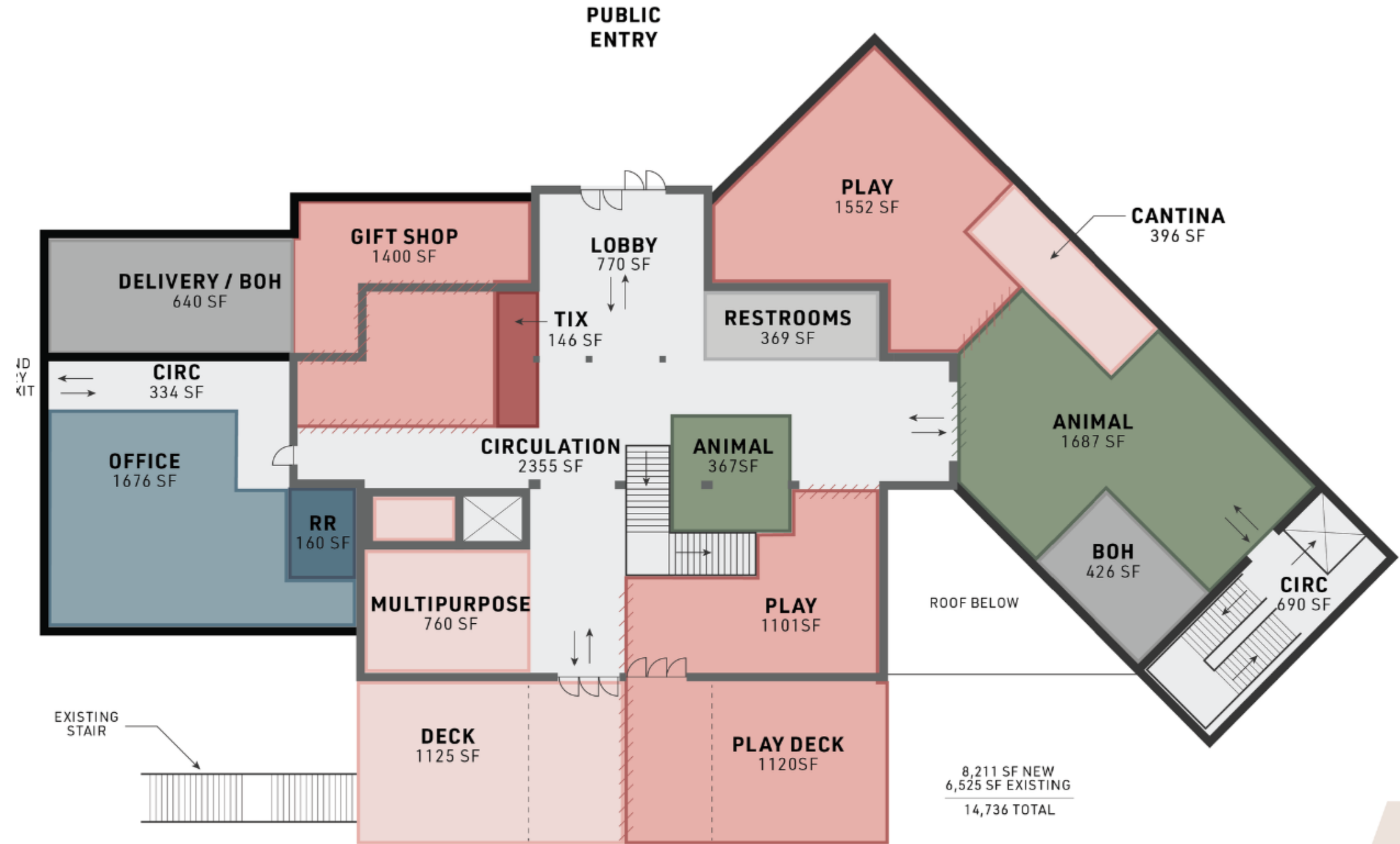






## AREA SCHEDULE

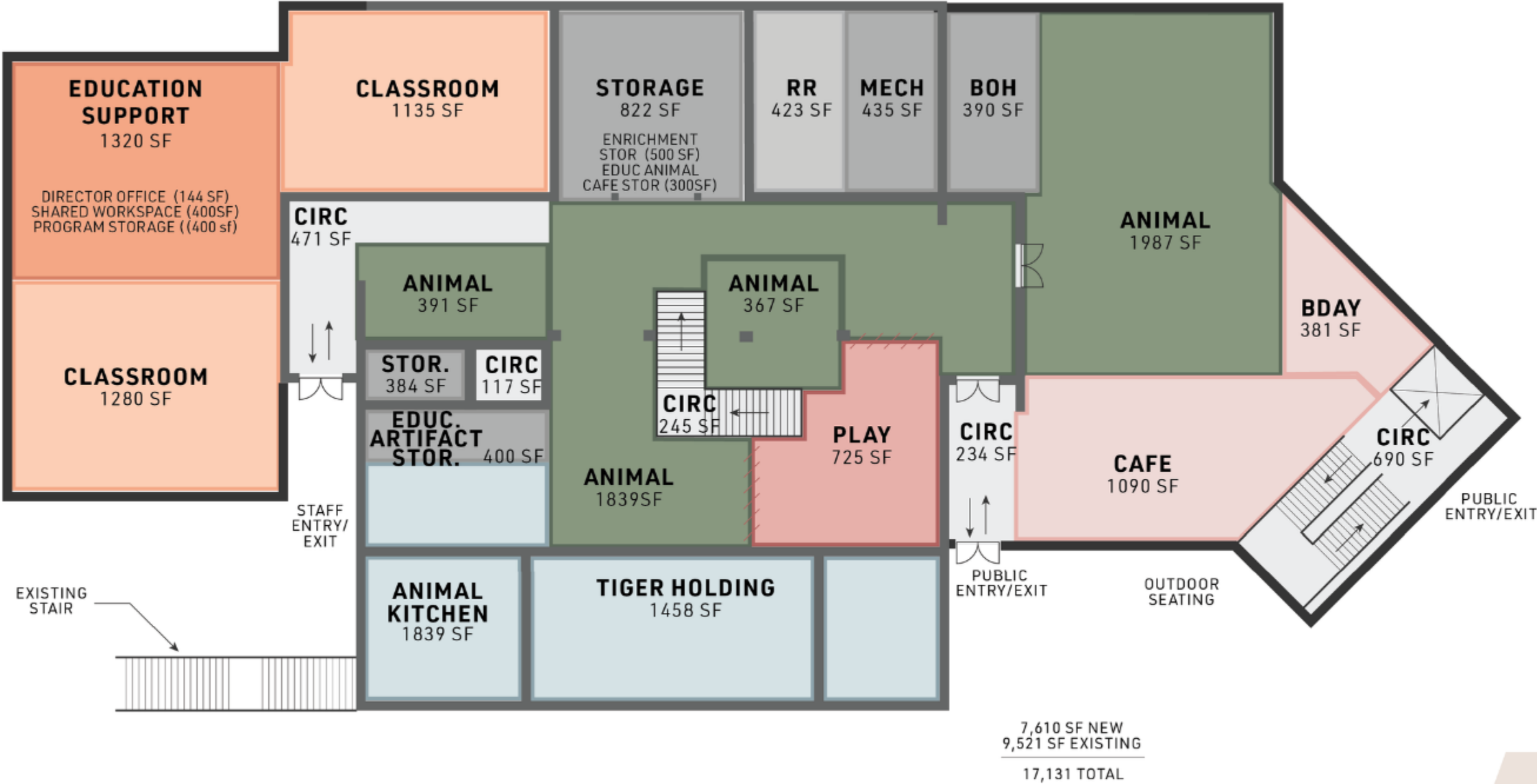
Name	Area
<b>LOWER LEVEL</b>	
ANIMAL	4,583 SF
ANIMAL KITCHEN	946 SF
BDAY	381 SF
BOH	390 SF
CAFE	1,090 SF
CIRCULATION	1,758 SF
CLASSROOM	2,415 SF
EDUCATION SUPPPORT	1,320 SF
MECH	435 SF
PLAY	725 SF
RESTROOMS	423 SF
STORAGE	1,206 SF
TIGER HOLDING	1,458 SF
<b>LOWER LEVEL</b>	<b>17,131 SF</b>
<b>MAIN LEVEL</b>	
ANIMAL	2,054 SF
BOH	426 SF
CANTINA	394 SF
CIRCULATION	3,379 SF
DELIVERY/BOH	640 SF
GIFT SHOP	1,400 SF
LOBBY	770 SF
MULTIPURPOSE	760 SF
OFFICE	1,676 SF
PLAY	2,562 SF
RESTROOMS	529 SF
TIX	146 SF
<b>MAIN LEVEL</b>	<b>14,736 SF</b>
<b>Grand total</b>	<b>31,867 SF</b>





# AREA SCHEDULE

Name	Area
LOWER LEVEL	
ANIMAL	4,583 SF
ANIMAL KITCHEN	946 SF
BDAY	381 SF
BOH	390 SF
CAFE	1,090 SF
CIRCULATION	1,758 SF
CLASSROOM	2,415 SF
EDUCATION SUPPPORT	1,320 SF
MECH	435 SF
PLAY	725 SF
RESTROOMS	423 SF
STORAGE	1,206 SF
TIGER HOLDING	1,458 SF
LOWER LEVEL	17,131 SF
MAIN LEVEL	
ANIMAL	2,054 SF
BOH	426 SF
CANTINA	394 SF
CIRCULATION	3,379 SF
DELIVERY/BOH	640 SF
GIFT SHOP	1,400 SF
LOBBY	770 SF
MULTIPURPOSE	760 SF
OFFICE	1,676 SF
PLAY	2,562 SF
RESTROOMS	529 SF
TIX	146 SF
MAIN LEVEL	14,736 SF
Grand total	31,867 SF







LAKE SUPERIOR ZOO







# CONCEPT DESIGN DEVELOPMENT

Predesign report and S3/SB 2030 Narrative

# CAPITAL CAMPAIGN PLANNING

Board & leadership session scheduled for July 2025





# DESIGN DEVELOPMENT & CONSTRUCTION DOCUMENTATION

Turning ideas into blueprints — balancing innovation and budget at every step

# PHASED CONSTRUCTION & BUILDING COMPLETION

Thoughtful staging will balance safety, guest experience, and budget





# COST ESTIMATE

**Total Cost : \$28,910,095**

- Building renovation phase - \$6,826,912
- Building addition phase - \$22,083,183

## **Funding Strategy**

- Capital campaign
- Public Funding
- Grants/Philanthropy



Adventure awaits, **NATURALLY.**





# Park Point Recreation Area

## Park Improvement Plan Process



June 11, 2025

Presented to Duluth Parks and Recreation Commission

by Katie Bennett, Senior Parks Planner

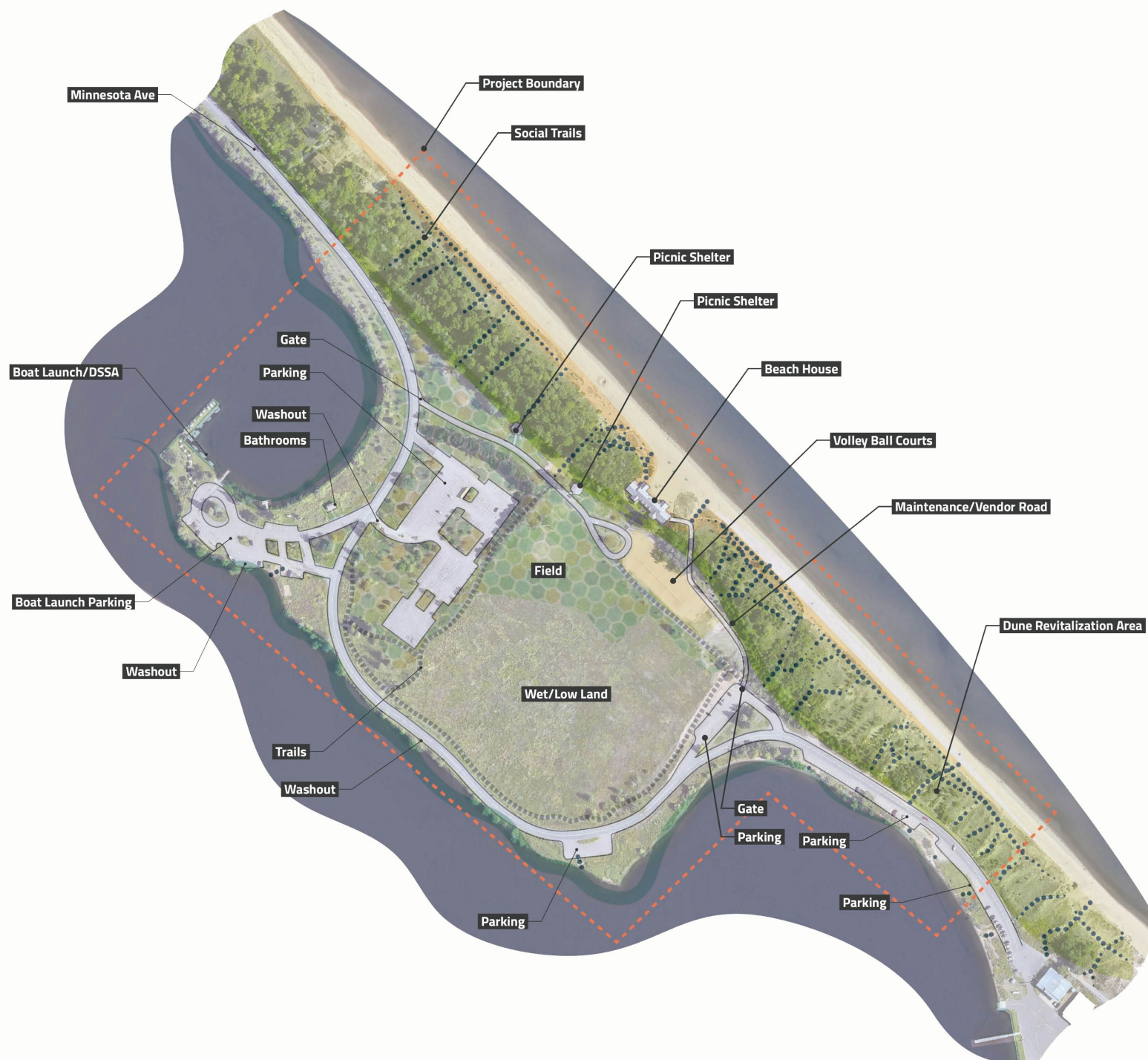


# Park Point Recreation Area















# Project Overview



# Project Purpose

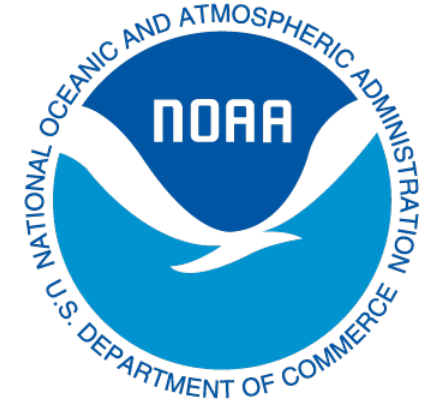
- Adopt a park plan for Park Point Recreation Area
  - Accessibility
  - Recreational opportunities
  - Cultural and natural resources
  - Resilient design for changing climate
- Develop a community-supported plan through a comprehensive public planning process
- Develop plan that will improve competitiveness when applying for grant funding





# Project Funding

- \$75,000 grant from Minnesota's Lake Superior Coastal Program
  - Minnesota Department of Natural Resources (DNR)
  - Office for Coastal Management, National Oceanic and Atmospheric Administration (NOAA)
- 1:1 Match Requirement
  - \$55,000 Parks Capital
  - \$20,000 in-kind City staff hours
- Funding to support professional services for plan development
  - Primary: LHB
  - Subconsultants: AMI and New History
- Grant expiration date: December 31, 2025
  - Contract services completed
  - Final plan adopted by City Council





# SCHEDULE

2025



## Key

Coordination

Assessment

Engagement

Visioning + Option Development

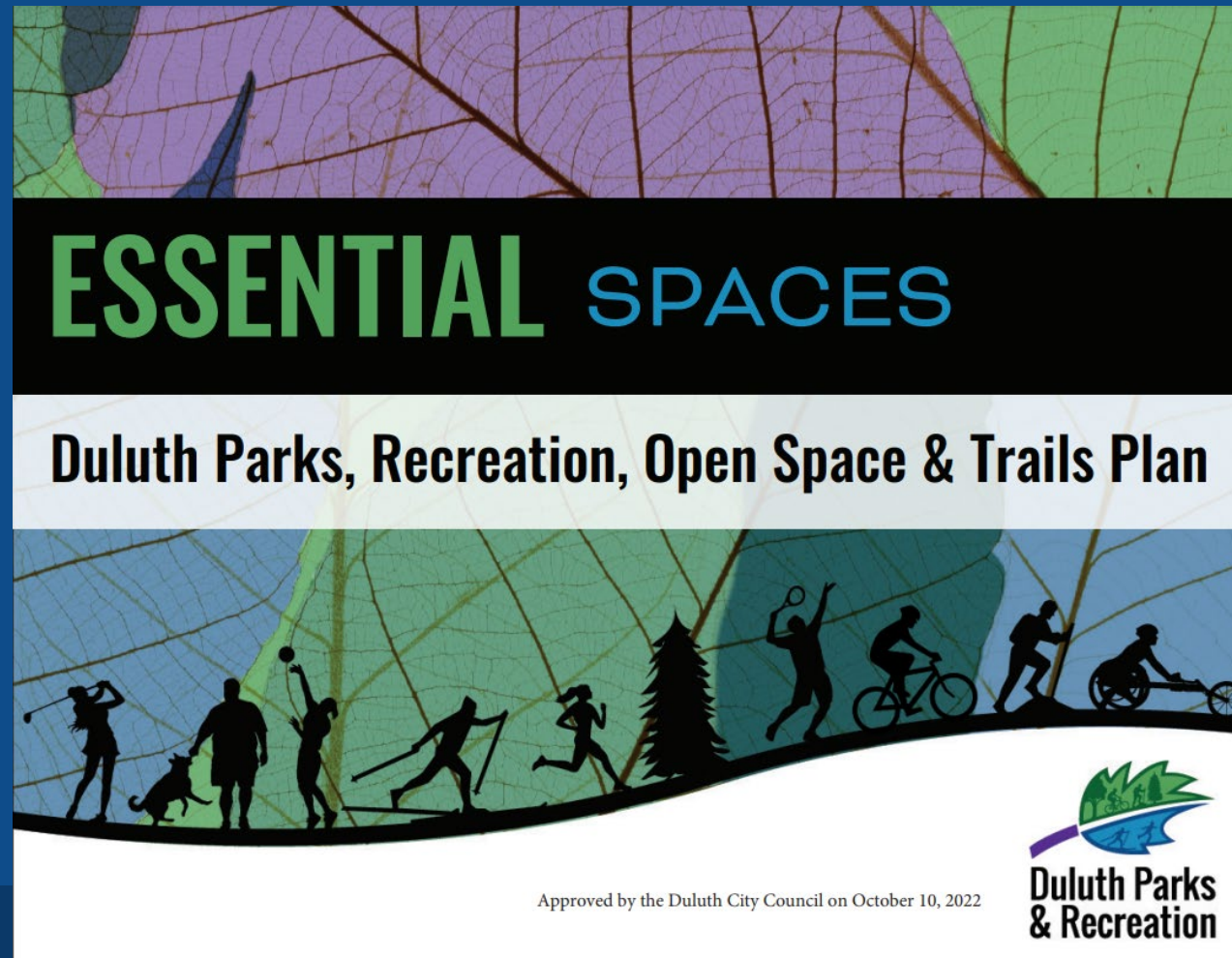
Funding + Implementation Strategies

Document Development

Key Meetings + Dates



# Essential Spaces Plan





# Essential Spaces Goals

- Goal B: Invest strategically to decrease routine and long-term maintenance requirements, leverage outside funding, and support community-based priorities
- **Goal E: Support opportunities for water-based recreation**
- Goal F: Support improvements that simultaneously fulfill documented community recreation needs, enhance tourist attraction, and delivery other public benefits such as economic development and resource protection
- **Goal G: Promote inclusion in our park spaces, facilities, and programs ensuring that all persons have equitable and appropriate access to our parks and recreation system**
- Goal H: Active park space to support local, social, cultural, and economic advancement
- **Goal I: Honor the culture, storytelling, art, and history of traditionally marginalized communities, including Indigenous peoples, racial and ethnic minorities, persons with disabilities, and the NQT2SLGBIA community among others**
- Goal J: Provide equitable, efficient, and effective opportunities for public participation in park planning processes to balance various perspectives and preferences
- **Goal K: Support visitor navigation and engagement through a user-friendly system of trailheads, signage, wayfinding, and interpretative elements**
- Goal M: Bolster relationships with partners who provide programming and recreation services, and support opportunities that fill gaps in existing local programming options
- **Goal P: Protect and enhance our open spaces to restore and maintain ecological health, build resilience to natural disasters, and preserve the area's natural beauty**
- **Goal Q: Increase climate-resiliency throughout our park and trail system through modern design and best management practices**



# Essential Spaces Action Items

- **System-Wide Action #8:** **Implement sustainable management plans** to improve water quality, increase habitat, and reduce maintenance. Strategies may include mow/ no-mow standards, transitioning parks and open spaces to more naturally functioning landscapes and stream bank restoration
- **System-Wide Action #18:** Continue to **implement the Gate, Wayfinding, and Signage Plan**, with greater emphasis on Indigenous language and cultural representation and a focus on ensuring that major, city-wide trail systems are well-signed to serve both locals and tourists in wayfinding efforts
- **Central Subarea Action #4:** Commence **planning effort for Park Point Recreation Area** to address aging infrastructure and climate impacts, to identify desired recreation options that are compatible and sustainable, to increase connectivity to recreation and water, and to strategize appropriate restroom and trash/recycling amenity locations
- **Central Subarea Action #5:** Continue to **implement “low mow” efforts at Park Point Recreation Area**. Enhance green spaces with natural plants and pollinator gardens to support climate resiliency efforts
- **Central Subarea Action #14:** In partnership with other agencies and other City departments, continue to work towards **beach preservation, natural resource management, and safe access points along the Minnesota Point Shoreline**
- **Central Subarea Action #17:** Evaluate long-term maintenance and site needs for **water-based recreation delivered by third-party non-profits** such as Duluth - Superior Sailing Association at the Park Point Recreation Area



# Community Engagement



# Phase 1: Focused Group Discussions

- Experts from natural resources management, city operations, and community/recreational programming were invited
- Over 40 people participated and provided input on existing conditions, park needs, and big ideas for the future

- MNDNR – Area of Concern Unit
- MNDNR Lake Superior Coastal Program
- MNDNR Parks & Trails
- MNDNR Fisheries
- MNDNR Nongame Wildlife Program
- MNDNR Minnesota Biological Survey
- Minnesota Pollution Control Agency
- UMD Environmental Science
- UMD Minnesota Sea Grant
- UMD Natural Resources Research Institute  
Avian Ecology Lab
- CISMA
- Lake Superior Headwaters Sustainability  
Partnership
- Minnesota Point 50
- Duluth Seaway Port Authority
- MN Scenic & Natural Areas
- Parks & Recreation
- Park Maintenance
- Property & Facilities Management
- Administration
- Planning & Economic Development
- Engineering – Stormwater
- Engineering – Transportation
- Life Safety
- Fire Department
- Police Department
- Park Point Community Club
- Izaak Walton League
- Duluth Foot Trails Alliance
- YMCA
- Duluth Boat Club
- Duluth Superior Sailing Association
- Northland Adaptive Recreation
- Norther MN Track Club
- Duluth Rowing Club
- St. Louis River Alliance
- Minnesota North Volleyball Club
- Surfrider Foundation
- Twin Ports Walleye Association



# Emerging Priorities...





# Phase 1 Community Engagement Continued

- **On-line community survey**
  - <https://publicinput.com/parkpointrecarea>
  - Open now through June 22
- **In-person community input session**
  - June 18 from 5 – 7pm at Lafayette Community Center
- **Consultation with Tribal representatives**

## What Do YOU Love About the Park Point Recreation Area?

### Participate in a Community Survey & Input Session

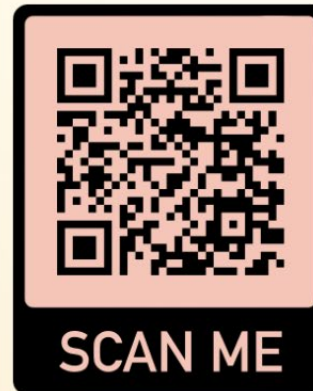
Parks & Recreation wants to hear from you! We're gathering community feedback to help guide improvements and future plans for the Park Point Recreation Area, and your voice matters.



Provide input on-line, in-person, or both!

**[publicinput.com/parkpointrecarea](https://publicinput.com/parkpointrecarea)**

Take the Survey



Join us for a **Community Input Session** on Wednesday, June 18 from 5 - 7 p.m.

Lafayette Community Center  
3016 Minnesota Ave





# Community Engagement Phases 2 & 3

## Phase 2: Feedback on Conceptual Plan Options

- Community-wide workshop #2 in August
- Pop-up events on Minnesota Point

## Phase 3: Feedback on Completed Plan Document

- Presentation to Parks & Recreation Commission on October 8<sup>th</sup>
  - Open 2-week public comment period on the plan document





# Thank you!

**Katie Bennett, Senior Parks Planner**

**[kbennett@duluthmn.gov](mailto:kbennett@duluthmn.gov)**

**(218) 730-4317**



**Duluth Parks  
& Recreation**