



City of Duluth Communications Office

Mayor Roger J. Reinert
411 West First Street • Duluth, Minnesota 55802 •
www.duluthmn.gov

For more information, please call 218-730-5309

DATE: 8/2/2024

SUBJECT: Temporary closure to portion of Skyline Parkway in Twin Ponds area

BY: Kelli Latuska, Public Information Officer

Temporary closure to portion of Skyline Parkway in the Twin Ponds area

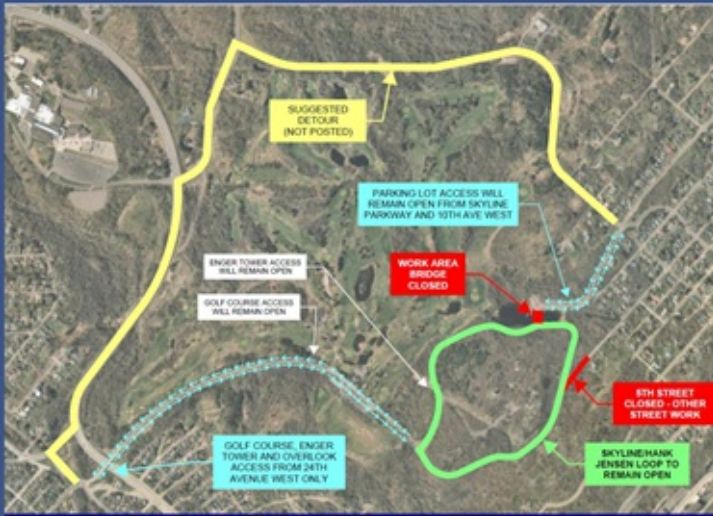
[DULUTH, MN] The City of Duluth will be temporarily closing Skyline Parkway at Twin Ponds for bridge repair work beginning August 12, 2024. The work is expected to take about two weeks, with the reopening of the bridge anticipated to take place after August 23, 2024.

Access to the Twin Ponds trailhead/parking area, Enger Park golf course, and Enger Tower will remain open, though minor delays and associated temporary traffic control should be expected to impact drivers in the area. To access the affected sites, please refer to the following:

- Enger Tower: Access will remain open from Hank Jensen Drive from 24th Avenue West only.
- Enger Park GC: Access will remain open on Skyline Parkway from 24th Ave West only.
- Enger Park Overlooks: Access will remain open on Skyline Parkway from 24th Ave West only.
- Twin Ponds/Trailhead: Access will remain open on Skyline Parkway from 10th Ave West only.

Drivers in this area may experience delays as contractors complete this important work and should remain alert and reduce speeds. Access is not available through Fifth Street due to other ongoing street work and drivers are advised not to move the barricades. No specific detour route will be posted, but a suggested detour using Observation Road and Highway 53 has been shown on the included map.

###



**SKYLINE PARKWAY CLOSURE - TWIN PONDS BRIDGE REPAIRS
AUGUST 12TH THRU AUGUST 23, 2024**



Skyline Parkway closure--Twin Ponds Bridge
Repairs
8/12 to 8/23

Skyline Pkwy closure map