



Purchasing Division
Finance Department
Room 120
411 West First Street
Duluth, Minnesota 55802

218-730-5340
purchasing@duluthmn.gov

Addendum #4
Solicitation 25-99328
Junction Avenue and St. Marie Street Reconditioning

NOTICE

This Addendum is issued to modify, explain, or correct the original drawings, specifications and/or previous addenda and is hereby made a part of the Contract Documents. **Please note receipt of this Addendum by checking the acknowledgement box within www.bidexpress.com solicitation.**

GENERAL

1. Updates to the Electrical Duct Bank Drawings and Tabulation.
2. Updates to storm sewer charts and SEQ.
3. The Project Bid Form is revised.
4. Descriptions of changes to drawings are for reference only and provide only a general overview of changes made. It is the Contractor's responsibility to fully assess and provide the specific requirements of the Work on all Plan sheets regardless of the description of sheet change(s) provided herein.

DRAWINGS

1. Drawing changes to the Electrical Duct Bank are as follows:
 - a. Duct Bank Sheets DB01- DB14; Delete sheets DB01-DB14 in their entirety and replace with revised Sheets DB01-DB14.
Revisions to sheets DB01-DB14 are as follows:
 - i. An Alignment shift along Junction Avenue that falls mostly in the street pavement.
2. Drawing changes to the STATEMENT OF ESTIMATED QUANTITIES are as follows:
 - a. Sheet 5; Delete sheet 5 in its entirety and replace with revised Sheet 5.
Revisions to sheet 5 are as follows:

- i. Pay item 2506.503 CONSTRUCT DRAINAGE STRUCTURE DES 48-4020 quantity changed:
 - 1. In the PARTICIPATING STORM column to 146.7 LIN FT.
- 3. Drawing changes to the CONSTRUCTION CHARTS are as follows:
 - a. Sheet 15; Delete Sheet 15 in its entirety and replace with revised sheet 15.
Revisions to sheet 15 are as follows:
 - i. Quantity updates are as follows for CONSTRUCT DRAINAGE STRUCTURE DESIGN 48-4020:
 - 1. Structure No. PMH-212 updated to be 7.31 LIN FT.
 - 2. Structure No. PMH-211 updated to be 9.64 LIN FT.
 - 3. Structure No. PMH-206 updated to be 8.83 LIN FT.
 - 4. Structure No. PMH-202 updated to be 8.94 LIN FT.
 - 5. Chart total updated to be 80.3 LIN FT.
 - b. Sheet 17; Delete Sheet 17 in its entirety and replace with revised sheet 17.
Revisions to sheet 8 are as follows:
 - i. Quantity updates are as follows for CONSTRUCT DRAINAGE STRUCTURE DESIGN 48-4020:
 - 1. Project total updated to be 146.7 LIN FT

END OF ADDENDUM

Posted: **April 4, 2025**

STATEMENT OF ESTIMATED QUANTITIES NOTES

1. ANY CASTINGS NOT REUSED OR SALVAGED TO THE CITY ON PROJECT SHALL BE DISPOSED OF BY THE CONTRACTOR.
2. INCLUDES SAWCUTTING OF BITUMINOUS AND CURB.
3. ALL MILLINGS SHALL BE PROPERLY DISPOSED OF BY THE CONTRACTOR AT AN APPROVED LOCATION OR CAN BECOME THE PROPERTY OF THE CONTRACTOR. THIS WORK SHALL BE INCLUDED FOR PAYMENT IN THE MILL BITUMINOUS SURFACE 2" PAY ITEM.
4. BITUMINOUS MATERIAL FOR TACK COAT (SPEC. 2357) SHALL BE PLACED AT A RATE OF 0.10 GAL/SQ. YD. BETWEEN ALL LIFTS FOR MILLED SURFACES AND AT A RATE OF 0.05 GAL/SQ. YD. FOR NEW CONSTRUCTION..
5. STRING LINE SHALL BE USED ON ALL LIFTS FOR A GUIDE OF PAVING OPERATIONS.
6. BITUMINOUS TONNAGE COMPUTED AT 115 LBS/SQ. YD./INCH OF THICKNESS.
7. DURING MILLING AND OVERLAY OPERATIONS THE CONTRACTOR SHALL PROVIDE A STREET SWEEPER WITH PICKUP BROOM TO REMOVE EXCESS MILLINGS AND CLEAN THE MILLED SURFACE TO THE APPROVAL OF THE ENGINEER PRIOR TO APPLICATION OF TACK COAT (INCIDENTAL).
8. INCLUDES PAYMENT FOR 6" CLASS 5 BASE UNDER WALK AND EXCAVATION - COMMON.
9. INCLUDES PAYMENT FOR 12" CLASS 5 BASE UNDER DRIVE AND EXCAVATION - COMMON.
10. INCLUDES STOCKPILE OF EXISTING TOPSOIL.
11. STORM WATER QUALITY STRUCTURE. AS NOTED IN THE STORM SEWER TABULATION.
12. MOUNTING HEIGHT IS 7 FEET UNLESS OTHERWISE SPECIFIED.
13. RESIDENTIAL CONCRETE DRIVEWAY
14. COMMERCIAL CONCRETE DRIVEWAY
15. BUS PAD PAID UNDER 6" CONCRETE WALK PAY ITEM. BUS PAD TO BE INSTALLED WITH CROSS SLOPE LESS THAN OR EQUAL TO 2% AND RUNNING SLOPE TO MATCH ROAD PROFILE.
16. INCLUDED PAYMENT FOR CURB REPLACEMENT WITH WIDER GUTTER PAN, SUCH AS THE CURB BETWEEN OAKLAND AVE AND BAYVIEW AVE.
17. INCLUDED VERTICAL HEIGHTS FROM 0" TO 12"
18. B624 CONCRETE CURB AND GUTTER WITH SILL CURB
19. USED FOR STREET RESTORATION PATCH PER CITY STANDARD SPECIFICATION.
20. ITEM SHALL BE USED FOR PERMANENT RESTORATION IF FINAL RESTORATION IS PERFORMED AFTER AUGUST 8TH, 2025.
21. ITEM SHALL BE USED FOR PERMANENT RESTORATION IF FINAL RESTORATION IS PERFORMED ON OR BEFORE AUGUST 8TH, 2025.
22. TOKEN QUANTITY.
23. AS DIRECTED BY THE ENGINEER.
24. NEW SIGN DESIGNS SHALL BE SUBMITTED TO THE ENGINEER FOR APPROVAL PRIOR TO INSTALLATION.

STATEMENT OF ESTIMATED QUANTITIES

NOTES	TAB	ITEM NO.	ITEM	UNIT	TOTAL	S.A.P. 118-156-013	S.A.P. 118-156-013	LOCAL
						PARTICIPATING ROADWAY	PARTICIPATING STORM	NON PARTICIPATING
19		2360.504	TYPE SP 12.5 NON WEARING COURSE MIXTURE (3,C) 8" THICK	SQ YD	7 120	7120		
5, 6		2360.509	TYPE SP 9.5 WEARING COURSE MIXTURE (3,C)	TON	2 250	2180		70
5, 6		2360.509	TYPE SP 12.5 NON WEARING COURSE MIXTURE (3,C)	TON	640	640		
		2451.507	GRANULAR BACKFILL (CV)	CU YD	2 310	2310		
		2451.507	COARSE AGGREGATE BEDDING (CV)	CU YD	390	390		
	X	2501.502	12" RC PIPE APRON	EACH	1		1	
	X	2501.502	24" RC PIPE APRON	EACH	1		1	
	X	2501.502	30" RC PIPE APRON	EACH	1		1	
	X	2502.503	4" PERFORATED TP PIPE DRAIN (MODIFIED)	LIN FT	948	948		
		2502.503	4" PERFORATED PVC PIPE DRAIN	LIN FT	2 487	2487		
	X	2503.503	12" RC PIPE SEWER DESIGN 3006 CLASS III	LIN FT	979		979	
	X	2503.503	15" RC PIPE SEWER DESIGN 3006 CLASS III	LIN FT	102		102	
	X	2503.503	18" RC PIPE SEWER DESIGN 3006 CLASS III	LIN FT	153		153	
	X	2503.503	24" RC PIPE SEWER DESIGN 3006 CLASS III	LIN FT	772		772	
	X	2503.503	30" RC PIPE SEWER DESIGN 3006 CLASS III	LIN FT	93		93	
	X	2503.602	CONNECT TO EXISTING STORM SEWER	EACH	25		25	
	X	2503.602	CONNECT INTO EXISTING DRAINAGE STRUCTURE	EACH	1		1	
		2503.603	LINING SEWER PIPE 12"	LIN FT	99	99		
		2503.603	LINING SEWER PIPE 15"	LIN FT	450	450		
22, 23		2504.602	VALVE BOX	EACH	2	2		
		2504.602	ADJUST VALVE BOX	EACH	14	14		
		2504.602	CONCRETE ENCASED VALVE BOX COLLAR	EACH	7	7		
		2505.602	ADJUST VALVE BOX-GAS	EACH	1	1		
	X	2506.502	CONSTRUCT DRAINAGE STRUCTURE DESIGN G OR H	EACH	32		32	
	X	2506.502	CASTING ASSEMBLY	EACH	27		27	
		2506.502	ADJUST FRAME AND RING CASTING	EACH	3	3		
11	X	2506.503	CONSTRUCT DRAINAGE STRUCTURE DESIGN SPECIAL	LIN FT	21.0		21.0	
	X	2506.503	CONSTRUCT DRAINAGE STRUCTURE DES 48-4020	LIN FT	146.7		146.7	
	X	2506.502	CONSTRUCT DRAINAGE STRUCTURE DES 60-4020	LIN FT	11.7		11.7	
	X, B	2506.602	CONCRETE ENCASED CASTING COLLAR	EACH	15		15	
	X	2511.504	GEOTEXTILE FILTER TYPE 4	SQ YD	67	67		
	X	2511.507	RANDOM RIPRAP CLASS III	CU YD	22	22		
8, 15	C	2521.518	6" CONCRETE WALK	SQ FT	45 248	35211		10037
	C	2521.602	DRILL AND GROUT REINF BAR (EPOXY COATED)	EACH	812	705		107
	C	2531.503	CONCRETE CURB AND GUTTER DESIGN SPECIAL	LIN FT	1 380	1380		
	C	2531.503	CONCRETE CURB AND GUTTER DESIGN B624	LIN FT	3 140	2950		190
16	C	2531.503	CONCRETE CURB AND GUTTER DESIGN B636	LIN FT	103	103		
	C	2531.503	CONCRETE CURB AND GUTTER DESIGN S524	LIN FT	567	567		
17	C	2531.503	CONCRETE CURB DESIGN V8 (MODIFIED)	LIN FT	150	150		
9, 13	C	2531.504	7" CONCRETE DRIVEWAY PAVEMENT	SQ YD	20	20		
9, 14	C	2531.504	8" CONCRETE DRIVEWAY PAVEMENT	SQ YD	415	382		33
	C	2531.618	TRUNCATED DOMES	SQ FT	808	808		

(P) PLANNED QUANTITY

PLOT DATE: 4/4/2025 8:21:37 AM FILE: G:\24Pro\240250\500 Drawings\Civil\240250_03.0_SFQ.dwg

LHB PROJECT NO. 240250

I HEREBY CERTIFY that this plan, specification or report was prepared by me or under my direct supervision and that I am a duly Licensed Professional Engineer under the laws of the State of Minnesota.

BRAD REIFSTECK
PRINTED NAME

SIGNATURE

02/07/2025
DATE
47930
LIC. NO.

S.A.P. 118-156-013

CITY PROJECT 1464

JUNCTION AVE/ST. MARIE ST. RECONDITIONING

2	04/04/2025	ADDENDUM 03
1	03/25/2025	ADDENDUM 01
STATEMENT OF ESTIMATED QUANTITIES		
SHEET NO. 5 OF 89 SHEETS		

STORM SEWERS – PIPES, MANHOLES, AND CATCH BASINS (1 OF 3)

X

STRUCTURE NUMBER	STATION	LOCATION	RIM ELEV	UP-STREAM INVERT ELEV	4" PERF TP PIPE (MOD)	GEOTEXTILE FILTER TYPE 4	RANDOM RIPRAP CLASS III	CONSTRUCT DRAINAGE STRUCTURE DESIGN					STORM CASTING TYPE	CASTING ASSEMBLY	RC PIPE SEWER DES 3006 CLASS III					RC PIPE APRON			CONCRETE ENCASED CASTING COLLAR	CONNECT TO EXISTING STORM SEWER	CONNECT INTO EXISTING DRAINAGE STRUCTURE	12" STORM SEWER LINING (CIPP)	15" STORM SEWER LINING (CIPP)	PIPE NUMBER	DRAINS TO	DOWN-STREAM INVERT ELEV	GRADE %	COMMENTS			
								H	G	48-4020	60-4020	SPECIAL			12"	15"	18"	24"	30"	12"	24"	30"											EACH	EACH	EACH
								2502	2511	2511	2506				2506	2503			2503			2506											2503	2503	2503
LIN FT	SQ YD	CU YD	EACH	EACH	LIN FT	LIN FT	LIN FT	LIN FT	LIN FT	EACH	LIN FT	LIN FT	LIN FT	LIN FT	LIN FT	EACH	EACH	EACH	EACH	EACH	LIN FT	LIN FT													
ALIGNMENT: JUNCTION AVE – ST MARIE ST																																			
PCB-101	101+22.42	17.24 RT	1131.48	1128.23				1				STRM-3	6													1		99		P-101	L-101	1128.12	1.87%	(3)(4)	
PCB-203	106+26.00	17.13 RT	1129.23	1125.23				1				STRM-3	19																P-203	PCB-205	1125.09	0.72%			
PCB-210	107+90.58	16.90 LT	1132.69	1129.66				1				STRM-3	77																P-210	PCB-208	1125.00	6.01%			
PCB-204	106+49.99	17.00 LT	1129.20	1125.43					1			STRM-2	31																P-204	PCB-205	1125.09	1.10%			
PCB-204A	106+34.99	17.00 LT	1129.21	1125.68								STRM-2	15																P-204A	PCB-204	1125.53	1.00%			
PCB-205	106+45.09	13.65 RT	1128.77	1124.99								STRM-3	1	14															P-205	PMH-202	1124.89	0.73%			
ST0750064	106+88.88	43.13 LT	1129.78	1122.72																									P-208A	PCB-208	1122.35	1.04%	(3)		
PCB-208	107+13.10	17.00 LT	1130.17	1122.25								STRM-3	1																P-208	PCB-207	1121.92	1.01%			
PCB-207	107+13.10	15.74 RT	1129.96	1121.82								STRM-3	1																P-207	PMH-206	1121.76	0.99%			
PCB-214	109+91.78	17.00 LT	1146.30	1142.86								STRM-3	27																P-214	PMH-212	1142.50	1.31%			
PCB-213	109+91.78	17.03 RT	1146.30	1142.76								STRM-3	8																P-213	PMH-212	1142.70	0.72%			
PMH-212	109+87.18	10.07 RT	1146.15	1138.80								STRM-3	1	15															P-212A	PMH-215	1138.70	0.68%			
PMH-215	109+72.50	10.00 RT	1145.08	1138.70								STRM-1	1	12															P-215	PMH-211	1138.47	1.87%			
PMH-212	109+87.18	10.07 RT	1146.15	1140.40								STRM-1	1																P-212	PMH-211	1139.79	4.02%	(3)(4)		
PMH-211	109+77.08	21.37 RT	1145.71	1136.10	264							STRM-1	1																P-211	PMH-206	1122.87	5.00%			
PMH-206	107+12.71	21.80 RT	1130.46	1121.66	57							STRM-1	1																P-206	PMH-202	1121.09	1.00%			
PMH-202	106+55.69	22.23 RT	1129.90	1120.99		35.2	12.3					STRM-1	1																P-202	APR-201	1120.51	1.01%			
PCB-301	112+83.24	35.33 LT	1167.38	1164.23								STRM-3	26																P-301	PCB-302	1164.10	0.50%			
PCB-302	113+09.06	35.35 LT	1169.04	1163.85								STRM-3	1	12	47														P-302	PMH-304	1163.49	0.77%	(3)(5)		
PMH-304	112+97.67	10.24 RT	1168.32	1163.05								STRM-1	1																E-304	EX-STORM			(3)(4)		
PCB-305	113+33.77	16.90 LT	1170.82	1166.66								STRM-3	27																P-305	PCB-306	1166.39	1.00%			
PCB-306	113+33.77	10.18 RT	1170.97	1164.72								STRM-3	1																P-306	PMH-304	1163.49	3.41%	(3)(4)		
PCB-402	115+98.55	16.87 LT	1188.67	1184.97								STRM-3	28																P-402	PMH-401	1184.83	0.50%			
PCB-403	115+98.21	17.00 RT	1188.59	1184.90								STRM-3	14																P-403	PMH-401	1184.83	0.52%			
PMH-401	115+87.10	8.94 RT	1188.34	1183.22								STRM-1	1																E-104				(3)(5)		
CHART TOTAL (THIS SHEET)					321	35	12	10	1	80.3		10.4		12	331.0	47.0	129.0	291.0	93.0	1		1	4	8	1	99.0									

KEY NOTES:

- ① CASTING ASSEMBLIES FOR STRUCTURE PAID FOR BY THE EACH ARE INCIDENTAL.
- ② PAY HEIGHT=(TOP OF CASTING-INVERT)-CASTING HEIGHT+0.70 FOR BASE BASE IS TO BE PAID AT 0.70' REGARDLESS OF ACTUAL THICKNESS.
- ③ FIELD VERIFY INVERT AND LOCATION OF EXISTING STORM SEWER.
- ④ 6 LF OF STORM SEWER WAS ADDED TO FACILITATE PIPE CONNECTION.
- ⑤ 12 LF OF STORM SEWER WAS ADDED TO FACILITATE PIPE CONNECTION.
- ⑥ PAID FOR UNDER ANOTHER ITEM.
- ⑦ INCLUDES 4 FOOT SUMP. INCLUDES SNOOT AND SAFL BAFFLE.
- ⑧ INCLUDES 4 FOOT SUMP. INCLUDES SNOOT.

PLOT DATE: 4/1/2025 8:22:29 AM FILE: G:\244Pro\240250\500 Drawings\Civil\240250_032 Charts.dwg

LHB PROJECT NO. 240250

I HEREBY CERTIFY that this plan, specification or report was prepared by me or under my direct supervision and that I am a duly Licensed Professional Engineer under the laws of the State of Minnesota.

BRAD REIFSTECK
PRINTED NAME

SIGNATURE

02/07/2025
DATE
47930
LIC. NO.

S.A.P. 118-156-013

CITY PROJECT 1464

JUNCTION AVE/ST. MARIE ST. RECONDITIONING

2	04/04/2025	ADDENDUM 03
1	03/25/2025	ADDENDUM 01
CONSTRUCTION CHARTS		
SHEET NO. 15 OF 89 SHEETS		

STORM SEWERS – PIPES, MANHOLES, AND CATCH BASINS (3 OF 3)

X

STRUCTURE NUMBER	STATION	LOCATION	RIM	UP-STREAM INVERT	4" PERF TP PIPE (MOD)	GEOTEXTILE FILTER TYPE 4	RANDOM RIPRAP CLASS III	CONSTRUCT DRAINAGE STRUCTURE DESIGN (2)					STORM CASTING TYPE (1)	CASTING ASSEMBLY	RC PIPE SEWER DES 3006 CLASS III					RC PIPE APRON			CONCRETE ENCASED CASTING COLLAR	CONNECT TO EXISTING STORM SEWER	CONNECT INTO EXISTING DRAINAGE STRUCTURE	12" STORM SEWER LINING (CIPP)	15" STORM SEWER LINING (CIPP)	PIPE NUMBER	DRAINS TO	DOWN-STREAM INVERT	GRADE	COMMENTS			
			ELEV	ELEV	2502	2511	2511	2506							2506	2503					2506	2503								2503	2503		2503	ELEV	%
			LIN FT	SQ YD	CU YD	EACH	EACH	LIN FT	LIN FT	LIN FT	EACH	LIN FT			LIN FT	LIN FT	LIN FT	LIN FT	EACH	EACH	EACH	EACH								EACH	EACH		LIN FT	LIN FT	
ALIGNMENT: JUNCTION AVE – ST MARIE ST																																			
PCB-1010	145+16.44	35.54 LT	1092.37	1089.04				1					STRM-3		24														P-1010	PCB-1011	1088.84	0.84%			
PCB-1011	144+92.69	35.58 LT	1093.64	1088.74					1				STRM-3		29														P-1011	PCB-1012	1088.56	0.62%			
PCB-1012	144+68.42	19.68 LT	1094.39	1088.46					1				STRM-3		31														P-1012	PMH-1013	1088.19	0.86%			
PMH-1013	144+84.68	7.14 RT	1094.05	1088.46	39								STRM-1															P-1013	PMH-1015	1086.84	1.34%				
PMH-1006	140+96.86	7.34 RT	1108.28	1102.70	275						5.61		STRM-1	1			6	275										P-1006	PMH-1009	1093.21	3.45%	(3) (4)			
PMH-1009	143+71.57	6.88 RT	1098.49	1093.11	113						5.41		STRM-1	1				113										P-1009	PMH-1013	1088.19	4.35%				
PMH-1013	144+84.68	7.14 RT	1094.05	1087.50	9						6.58		STRM-1	1	9													P-1013A	PMH-1016	1087.30	2.26%				
PMH-1016	144+84.62	15.86 RT	1093.88	1087.30	38						10.61 (7)		STRM-1	1	38													P-1016	PMH-1015	1086.84	1.21%				
PMH-1015	145+22.81	16.23 RT	1092.45	1086.74		33.4	9.2				5.74		STRM-1	1				54				1						P-1015	APR-1017	1086.02	1.23%				
PCB-1101	147+77.39	19.48 RT	1087.09	1084.04					1				STRM-3		46													P-1101	PMH-1102	1083.81	0.50%				
PMH-1102	148+23.42	19.75 RT	1086.55	1083.71							2.87		STRM-1	1	6													E-1102				(3) (4)			
CHART TOTAL (THIS SHEET)					474	33	9	2	2	20.6	5.6	10.6		6	183.0		6.0	481.0			1		5	2											
PROJECT TOTALS					948	67	22	27	5	146.7	11.7	21.0		27	979	102	153	772	93	2	1	1	15	25	1	1	450								



KEY NOTES:

- (1) CASTING ASSEMBLIES FOR STRUCTURE PAID FOR BY THE EACH ARE INCIDENTAL.
- (2) PAY HEIGHT=(TOP OF CASTING-INVERT)-CASTING HEIGHT+0.70 FOR BASE BASE IS TO BE PAID AT 0.70' REGARDLESS OF ACTUAL THICKNESS.
- (3) FIELD VERIFY INVERT AND LOCATION OF EXISTING STORM SEWER.
- (4) 6 LF OF STORM SEWER WAS ADDED TO FACILITATE PIPE CONNECTION.
- (5) 12 LF OF STORM SEWER WAS ADDED TO FACILITATE PIPE CONNECTION.
- (6) PAID FOR UNDER ANOTHER ITEM.
- (7) INCLUDES 4 FOOT SUMP. INCLUDES SNOUT AND SAFL BAFFLE.
- (8) INCLUDES 4 FOOT SUMP. INCLUDES SNOUT.

CASTING ASSEMBLIES										XX
CASTING	STRM-1		STRM-2			STRM-3				
TYPE OF ASSEMBLY	STORM MH		STORM CB			STORM CB				
CASTING DESCRIPTION	FRAME	LID	FRAME	GRATE	BOX	FRAME	GRATE			
DULUTH PLATE NUMBER	STRM-1		STRM-2			STRM-3				
MNDOT PLATE NUMBER										
HEIGHT IN FEET	0.67'	NA	0.74	NA	NA	0.74'	NA			
PROJECT TOTALS	20		2			38				

PLOT DATE: 4/4/2025 8:22:43 AM FILE: G:\244Pro\240250\500 Drawings\Civil\240250_03.2_Charts.dwg

LHB PROJECT NO. 240250

I HEREBY CERTIFY that this plan, specification or report was prepared by me or under my direct supervision and that I am a duly Licensed Professional Engineer under the laws of the State of Minnesota.

BRAD REIFSTECK
PRINTED NAME

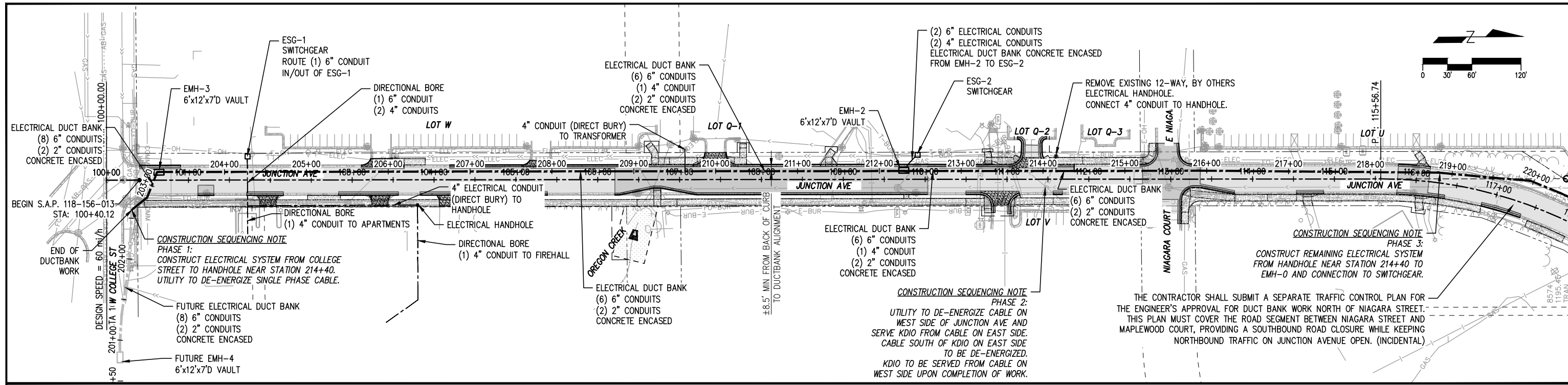
SIGNATURE

02/07/2025
DATE
47930
LIC. NO.

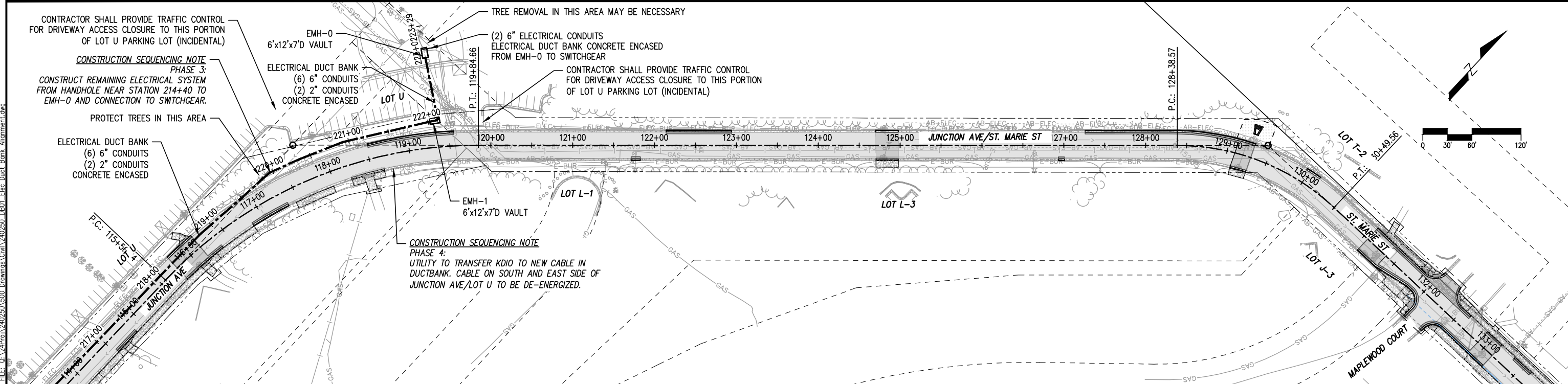
S.A.P. 118-156-013
CITY PROJECT 1464

JUNCTION AVE/ST. MARIE ST. RECONDITIONING

2	04/04/2025	ADDENDUM 03
1	03/25/2025	ADDENDUM 01
CONSTRUCTION CHARTS		
SHEET NO. 17 OF 89 SHEETS		



- NOTES:
- CONTRACTOR MUST COORDINATE WORK AROUND EXISTING UTILITIES TO COMPLETE THE WORK. COORDINATION IS INCIDENTAL TO PAY ITEM 2550.601 ELECTRICAL SERVICE.
 - CONTRACTOR IS RESPONSIBLE FOR FIELD LOCATING ALL EXISTING UTILITIES BEFORE COMMENCING WORK. LOCATING EXISTING UTILITIES IS INCIDENTAL TO PAY ITEM 2550.601 ELECTRICAL SERVICE.
 - THE FINAL DUCT BANK ALIGNMENT MAY CHANGE FROM THE PLAN ALIGNMENT BASED UPON FIELD CONDITIONS AND UTILITY CONFLICTS. NO RELOCATION OF PRIVATE UTILITIES IS ANTICIPATED. AFTER LOCATING EXISTING UTILITIES, IF THE CONTRACTOR DETERMINES THAT UTILITIES MUST BE RELOCATED OR DUCTBANK MUST BE REALIGNED, CONTRACTOR MAY SUBMIT IN WRITING A REQUEST TO ALTER THE DUCT BANK PLAN AND/OR PROFILE AS NEEDED TO AVOID EXISTING UTILITIES, OR SUBMIT IN WRITING A REQUEST TO RELOCATE SAID UTILITY AND COORDINATE RELOCATION WITH UTILITY OWNER. ADDITIONAL WORK DIRECTLY RELATED TO THE DUCTBANK REALIGNMENT OR UTILITY RELOCATION AND RESTORATION OF THE AREA WILL BE PROCESSED THROUGH A CHANGE ORDER WITH THE OWNER.
 - CONTRACTOR MUST OUTLINE ALL PAY ITEMS ASSOCIATED WITH SUBMITTED CHANGE ORDER REQUESTS. ANY ELIGIBLE ITEMS WILL BE PAID AT THE CONTRACT UNIT PRICE AS SPECIFIED ON THE BID FORM.
 - ALL STREET OR PARKING LOT PAVEMENTS, CURBS, DRIVEWAYS, AND SIDEWALKS THAT MUST BE REMOVED TO COMPLETE THE WORK SHALL BE REPLACED TO PRE-EXISTING THICKNESS OR TYPES USING THE BITUMINOUS MIX AND AGGREGATE BASE SHOWN FOR CURB REPLACEMENT OR PATCHING ON SHEET 20.
 - ALL ELECTRICAL DUCT BANK REMOVALS AND INSTALLATION AS SHOWN ON SHEETS DB01 TO DB14 AND/OR OUTLINED IN DIVISION SB SHALL BE PAID FOR UNDER LUMP SUM BID ITEM 2550.601 ELECTRICAL SERVICE AND ARE CONSIDERED NON-PARTICIPATING ITEMS.
 - ALL STREET WORK PAY ITEMS ARE TO BE INCIDENTAL TO LUMP SUM BID ITEM 2550.601 ELECTRICAL SERVICE AND ARE IDENTIFIED ON SHEET DB02. MATERIALS ARE TO BE SUPPLIED AND CONSTRUCTED AS DETAILED IN THE PLAN SHEETS AND SPECIFICATIONS.
 - ALL SIGNS AFFECTED BY THE WORK SHALL BE SALVAGED AND REINSTALLED BY THE CONTRACTOR. THIS WORK IS INCIDENTAL TO PAY ITEM 2550.601 ELECTRICAL SERVICE.
 - ALL RESTORATION AREAS DISTURBED BY THE ELECTRICAL WORK COVERED UNDER BID ITEM 2550.601 ELECTRICAL SERVICE SHALL BE RESTORED TO THE PRE-PROJECT CONDITIONS. THIS INCLUDES BUT IS NOT LIMITED TO FINISHED GRADING, REPLACING TOPSOIL, AND TURF ESTABLISHMENT.
 - CONTRACTOR SHALL COORDINATE WITH UMD AND BE RESPONSIBLE FOR TRAFFIC CONTROL WITHIN PARKING LOT U AND PUBLIC RIGHT OF WAY. TRAFFIC CONTROL SHALL CONFORM TO THE LATEST EDITION OF THE MNUCD. ALL TRAFFIC CONTROL RELATED TO THE WORK SHOWN ON SHEETS DB01 TO DB-14 IS INCIDENTAL TO PAY ITEM 2550.601 ELECTRICAL SERVICE.
 - CONTRACTOR SHALL ASSUME REMOVAL OF FIVE (5) TREES OF 12" DIAMETER OR LESS AT BREAST HEIGHT (12" DBH). REMOVAL INCLUDES CUTTING OF ROOTS AT LIMITS OF EXCAVATION AND REMOVAL OF STUMPS. REMOVAL INCLUDES OFF SITE DISPOSAL OF TREE AND STUMP. ASSUME FIVE (5) REPLACEMENT TREES. TREES SHALL BE REPLACED WITHIN THE PROJECT LIMITS. COORDINATE LOCATION OF EACH TREE WITH OWNER AND ENGINEER. APPROVED REPLACEMENT SPECIES ARE:
 - OHIO BUCKEYE (PRAIRIE TORCH, EARLY GLOW, OR AUTUMN SPLENDOR)
 - ALDER (PRAIRIE HORIZON)
 - DISCOVERY ELM
 - CRIMSON SPIRE OAK
 - HONEYLOCUST (NORTHERN ACCLAIM)
 ALL REPLACEMENT TREES SHALL BE 2.5" CALIPER. REMOVAL AND REPLACEMENT SHALL BE CONSIDERED INCIDENTAL TO PAY ITEM 2550.601 ELECTRICAL SERVICE.



LHB PROJECT NO. 240250/240771		NON-PARTICIPATING		04/04/2025	ADDENDUM 03
I HEREBY CERTIFY that this plan, specification or report was prepared by me or under my direct supervision and that I am a duly Licensed Professional Engineer under the laws of the State of Minnesota.		S.A.P. 118-156-013		DUCT BANK ALIGNMENT	
DAVID POLSON PRINTED NAME		CITY PROJECT 1464		SHEET NO. DB01 OF DB14 SHEETS	
	02/07/2025 DATE				
	57246 LIC. NO.				
JUNCTION AVE/ST. MARIE ST. RECONDITIONING					

PLOT DATE: 4/1/2025 9:24:31 AM FILE: G:\240771\240250\500 Drawings\Civil\240250_DB01_Elec Duct Bank Alignment.dwg

①② ELECTRICAL DUCT BANK															DB	
STATION	TO	STATION	ALIGNMENT	ELECTRICAL	ELECTRICAL	ELECTRICAL	ELECTRICAL	ELECTRICAL	ELECTRICAL	ELECTRICAL	ELECTRICAL	ELECTRICAL	(-) NON-	(-) NON-	REMARKS	
				VAULT	HANDHOLE	SWITCHGEAR	DUCT	DUCT	DUCT	DUCT	DUCT	DUCT	DUCT	METALLIC CONDUIT		METALLIC CONDUIT
				2550	2550	FOUNDATION	BANK	BANK	BANK	BANK	BANK	BANK	BANK	ELECTRICAL DUCT		ELECTRICAL DUCT
				EACH	EACH	EACH	LIN FT	LIN FT	LIN FT	LIN FT	LIN FT	LIN FT	LIN FT	LIN FT		
202+60.08	TO	203+26.22	DUCT BANK	1									66			
203+26.22	TO	208+58.44	DUCT BANK		1	1	532							287	208	
208+58.44	TO	209+69.14	DUCT BANK								111					
209+69.14	TO	212+23.50	DUCT BANK					254							26	
212+23.50	TO	214+15.74	DUCT BANK	1		1						180			17 (3)	
214+15.74	TO	215+34.23	DUCT BANK		1						118				14	
215+34.23	TO	215+95.67	DUCT BANK						61							
215+95.67	TO	222+00.29	DUCT BANK								605					
222+00.29	TO	222+89.32	DUCT BANK	1							84					
222+89.32	TO	223+29.00	DUCT BANK	1											9 (3)	
PROJECT TOTALS				4	2	2	532	254	61		918	180	66	287	274	PROJECT TOTALS

- ① ALL ITEMS LISTED SHALL NOT BE PAID SEPARATELY BUT SHALL BE INCLUDED FOR PAYMENT UNDER LUMP SUM BID ITEM 2550.601 ELECTRICAL SERVICE
- ② THE REMOVAL AND REPLACEMENT OF ALL PAVEMENTS, CURBS, AND SIDEWALKS FOR DUCT BANK WORK AND NOT ALREADY SHOWN ON SHEETS 52 TO 56 SHALL NOT BE MEASURED SEPARATELY BUT SHALL BE INCLUDED FOR PAYMENT UNDER LUMP SUM BID ITEM 2550.601 ELECTRICAL SERVICE.
- ③ THIS PORTION OF DIRECT BURY CONDUIT SHALL BE CONCRETE ENCASED.

①② ELECTRICAL DUCT BANK STREET WORK								DBS	
STATION	TO	STATION	ALIGNMENT	SAWCUT	REMOVE	REMOVE	TYPE SP 12.5	CONCRETE	REMARKS
				BITUMINOUS	CURB AND	BITUMINOUS	NON WEARING	CURB	
				PAVEMENT	GUTTER	PAVEMENT	COURSE	AND GUTTER	
				(FULL DEPTH)	2104	2104	(3C) 8" THICK	DESIGN B624	
				LIN FT	LIN FT	SQ YD	SQ YD	LIN FT	
202+60.08	TO	203+26.22	DUCT BANK	64	20	100	100	20	
203+26.22	TO	208+58.44	DUCT BANK	1 076		867	867		
208+58.44	TO	209+69.14	DUCT BANK	38		29	29		
209+69.14	TO	212+23.50	DUCT BANK						
212+23.50	TO	214+15.74	DUCT BANK	157		241	241		
214+15.74	TO	215+34.23	DUCT BANK	157		173	173		
215+34.23	TO	215+95.67	DUCT BANK	4		7	7		
215+95.67	TO	222+00.29	DUCT BANK	656	156	180	180	156	
222+00.29	TO	222+89.32	DUCT BANK	120	36	128	128	36	
222+89.32	TO	223+29.00	DUCT BANK						
PROJECT TOTALS				2 272	212	1 725	1 725	212	PROJECT TOTALS

PLOT DATE: 4/1/2025 9:24:45 AM FILE: G:\244Proj\240250\500 Drawings\Civil\240250_DB02_Duct Bank Charts.dwg

LHB PROJECT NO. 240250/240771

I HEREBY CERTIFY that this plan, specification or report was prepared by me or under my direct supervision and that I am a duly Licensed Professional Engineer under the laws of the State of Minnesota.

DAVID POLSON
PRINTED NAME

David Polson
SIGNATURE

02/07/2025
DATE
57246
LIC. NO.

NON-PARTICIPATING

S.A.P. 118-156-013

CITY PROJECT 1464





JUNCTION AVE/ST. MARIE ST. RECONDITIONING

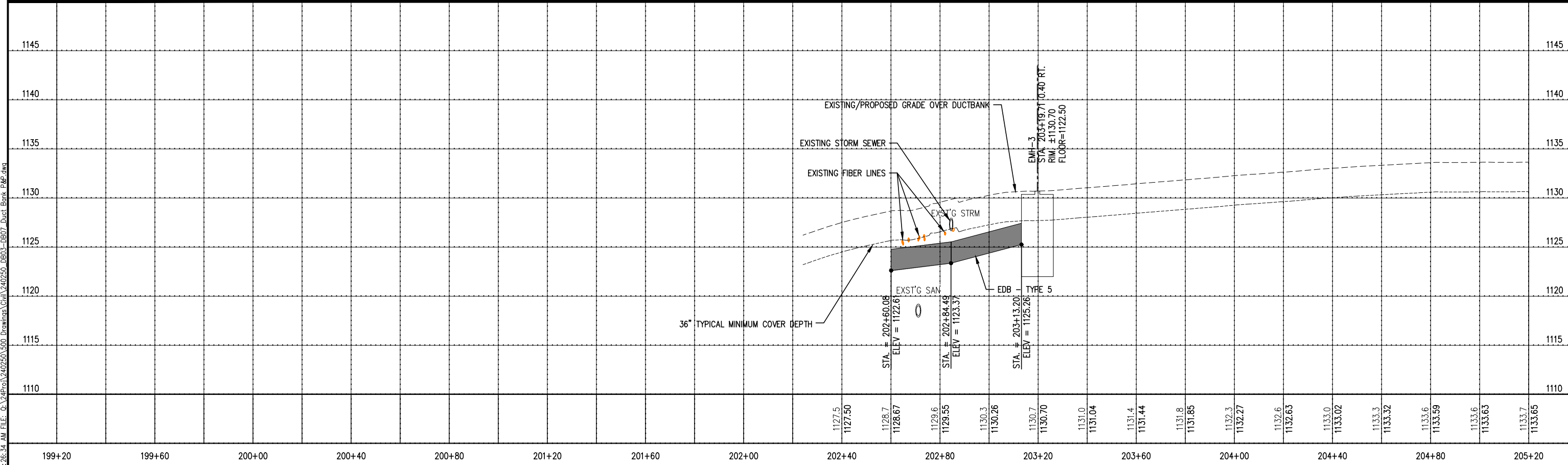
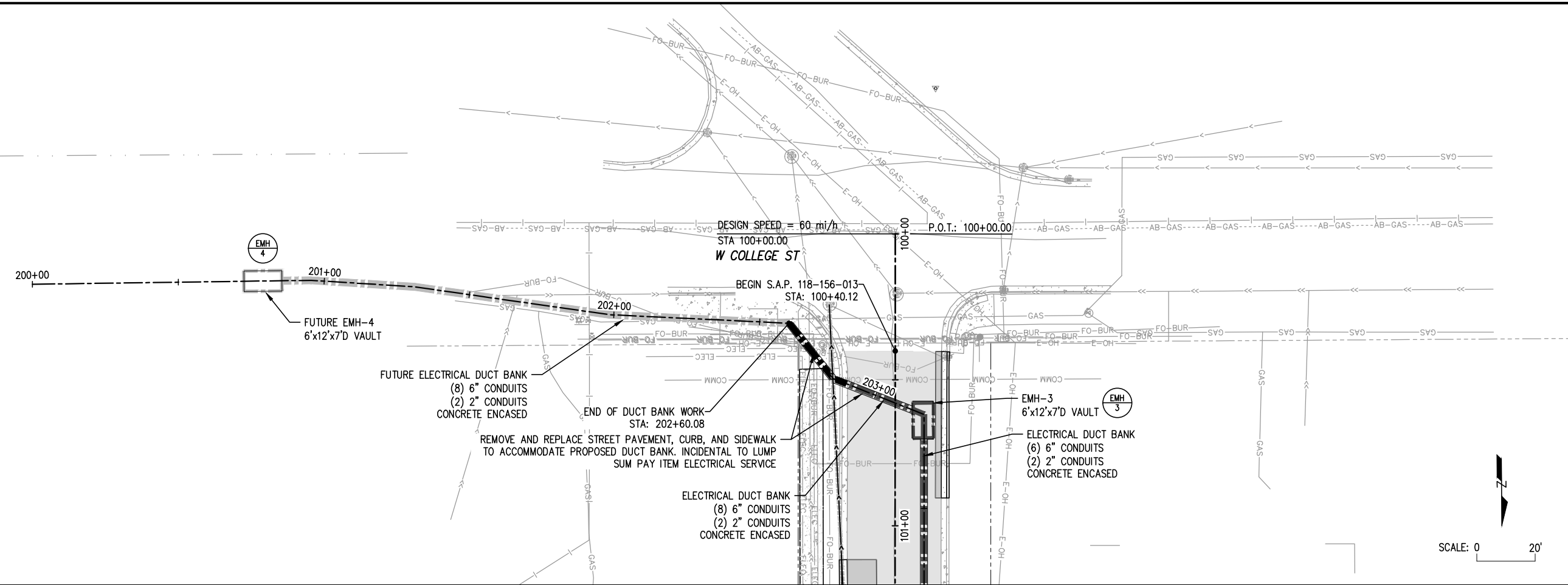
04/04/2025

ADDENDUM 03

CONSTRUCTION CHARTS

SHEET NO. DB02 OF DB14 SHEETS

- LEGEND**
-  FUTURE ELECTRICAL DUCT BANK
 -  ELECTRICAL DUCT BANK
 -  DIRECTIONAL BORE
 -  ELECTRICAL VAULT



LHB PROJECT NO. 240250/240771

I HEREBY CERTIFY that this plan, specification or report was prepared by me or under my direct supervision and that I am a duly Licensed Professional Engineer under the laws of the State of Minnesota.

DAVID POLSON
 PRINTED NAME

David Polson
 SIGNATURE

02/07/2025
 DATE

57246
 LIC. NO.

NON-PARTICIPATING

S.A.P. 118-156-013

CITY PROJECT 1464

JUNCTION AVE/ST. MARIE ST. RECONDITIONING

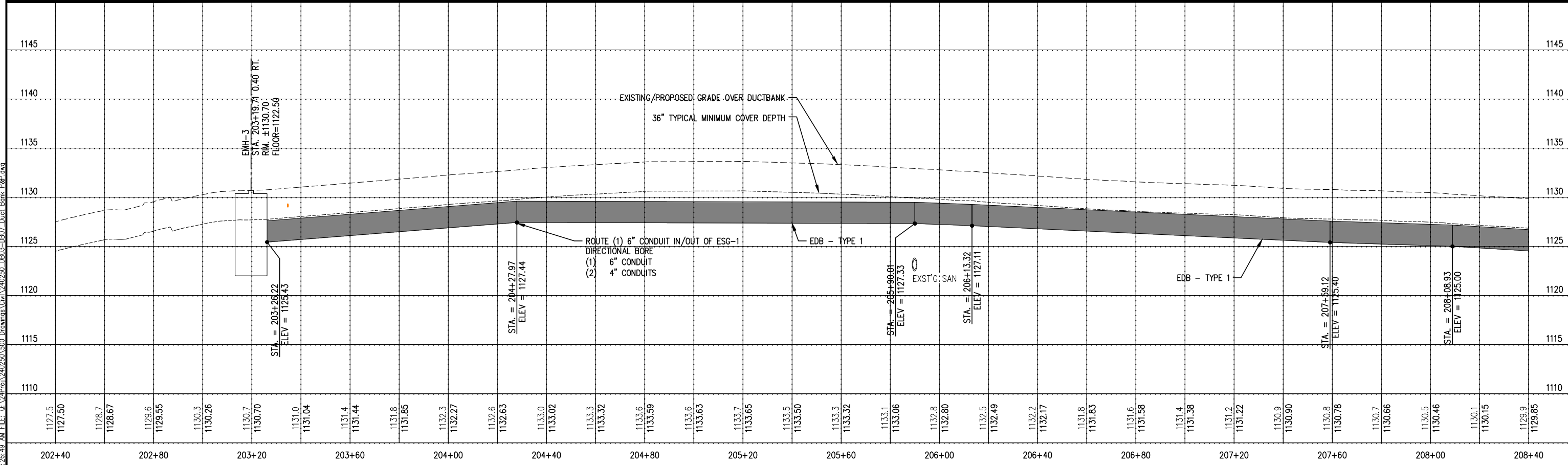
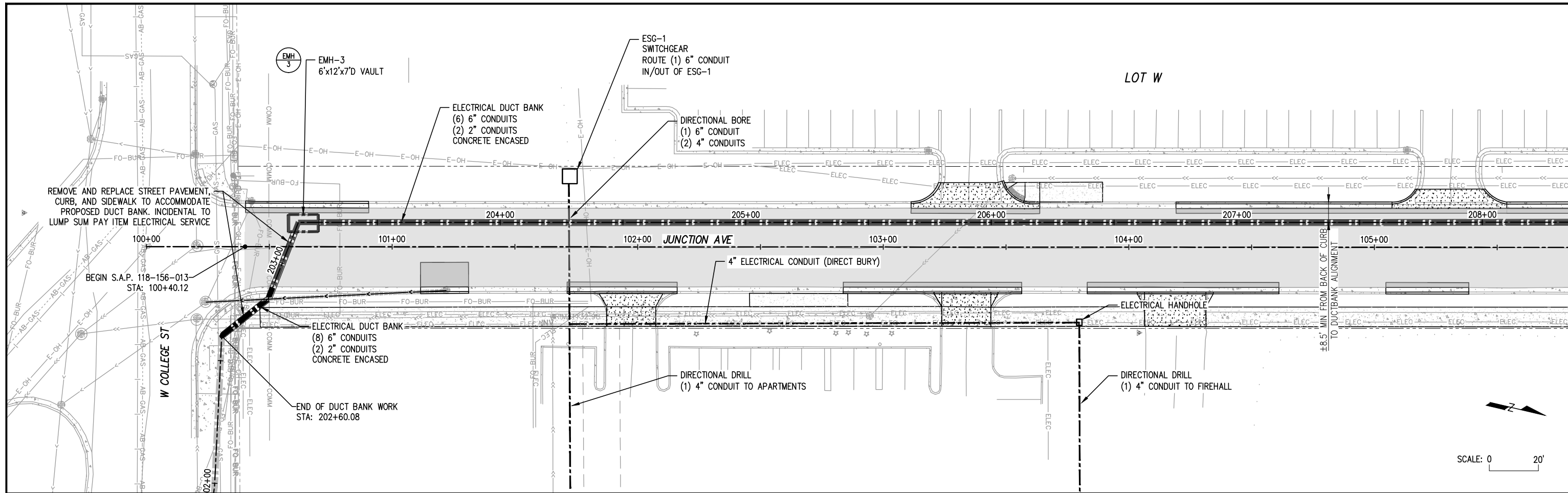
04/04/2025

ADDENDUM 03

PLAN & PROFILE

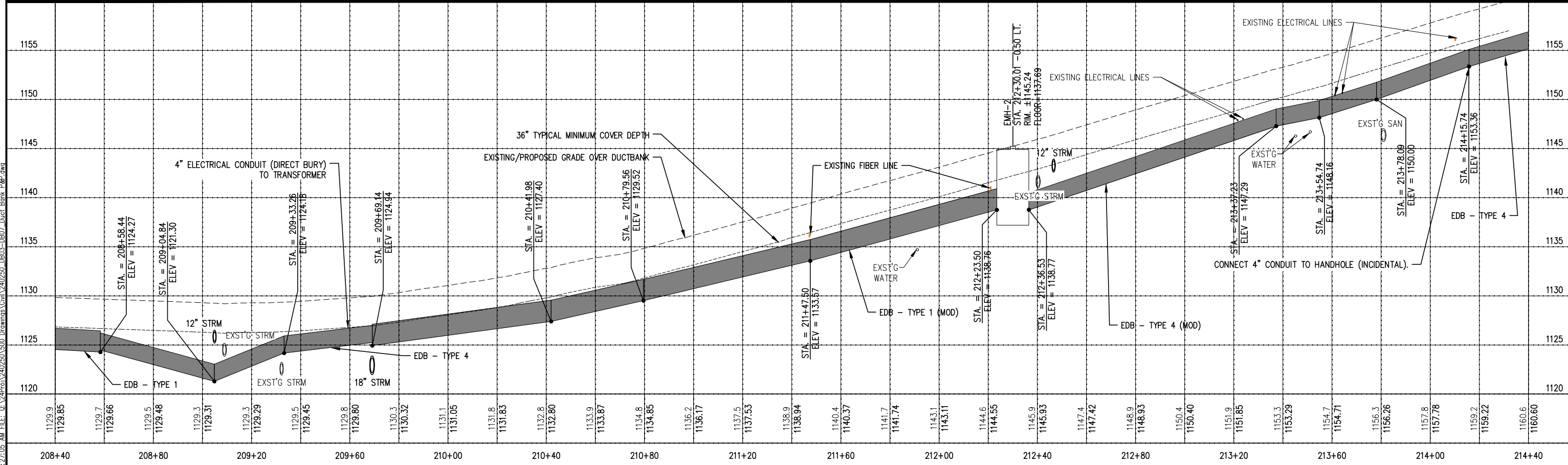
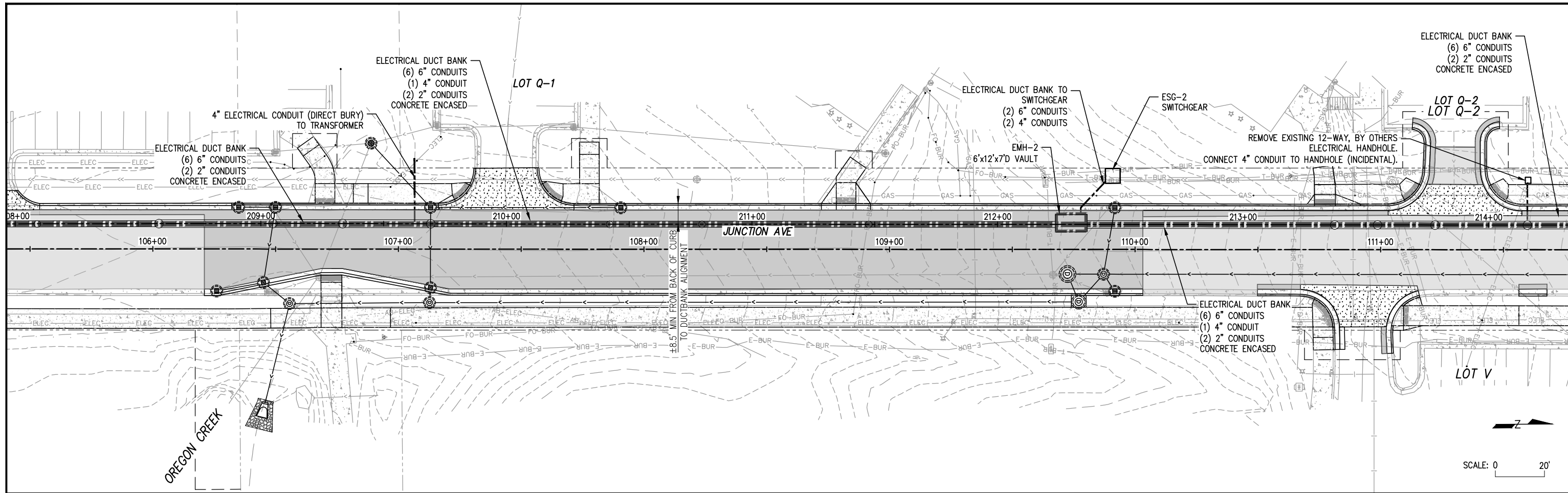
SHEET NO. DB03 OF DB14 SHEETS


PLOT DATE: 4/1/2025 9:26:34 AM FILE: G:\24\Proj\240250\500 Drawings\Civil\240250_DB03-DB07_Duct Bank_P&P.dwg



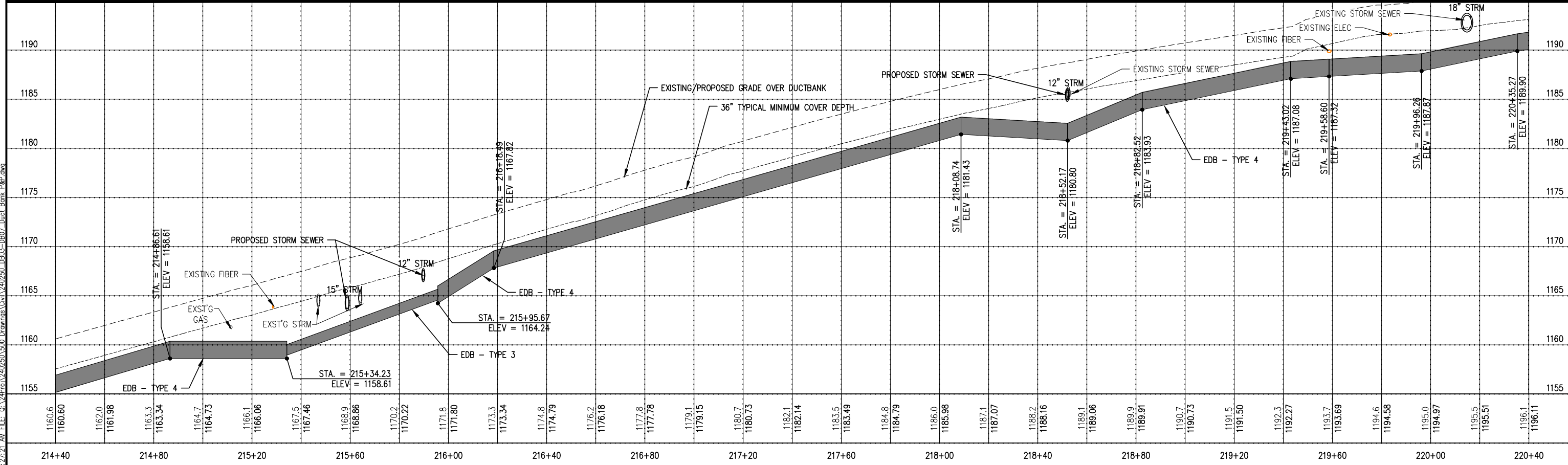
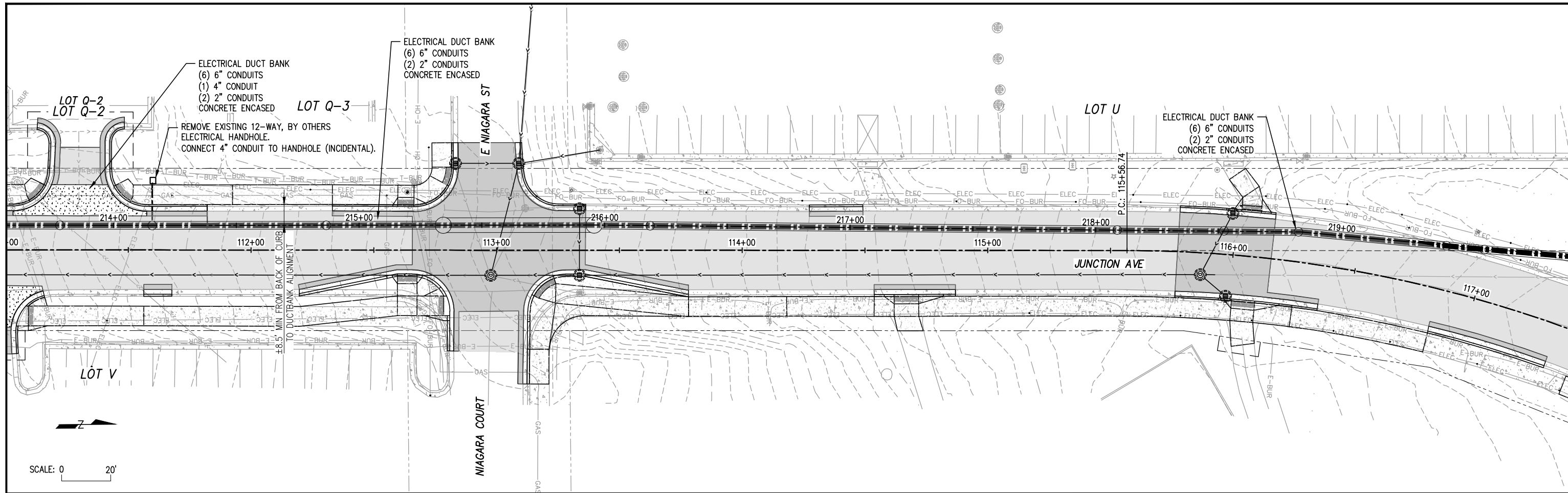
LHB PROJECT NO. 240250/240771		NON-PARTICIPATING		04/04/2025	ADDENDUM 03
I HEREBY CERTIFY that this plan, specification or report was prepared by me or under my direct supervision and that I am a duly Licensed Professional Engineer under the laws of the State of Minnesota.		S.A.P. 118-156-013		PLAN & PROFILE	
DAVID POLSON PRINTED NAME	<i>David Polson</i> SIGNATURE	CITY PROJECT 1464		SHEET NO. DB04 OF DB14 SHEETS	
	02/07/2025 DATE				
	57246 LIC. NO.				

PLOT DATE: 4/1/2025 9:26:49 AM FILE: G:\24\Proj\240250\500 Drawings\Civil\240250_DB03-DB07_Duct Bank_P&P.dwg



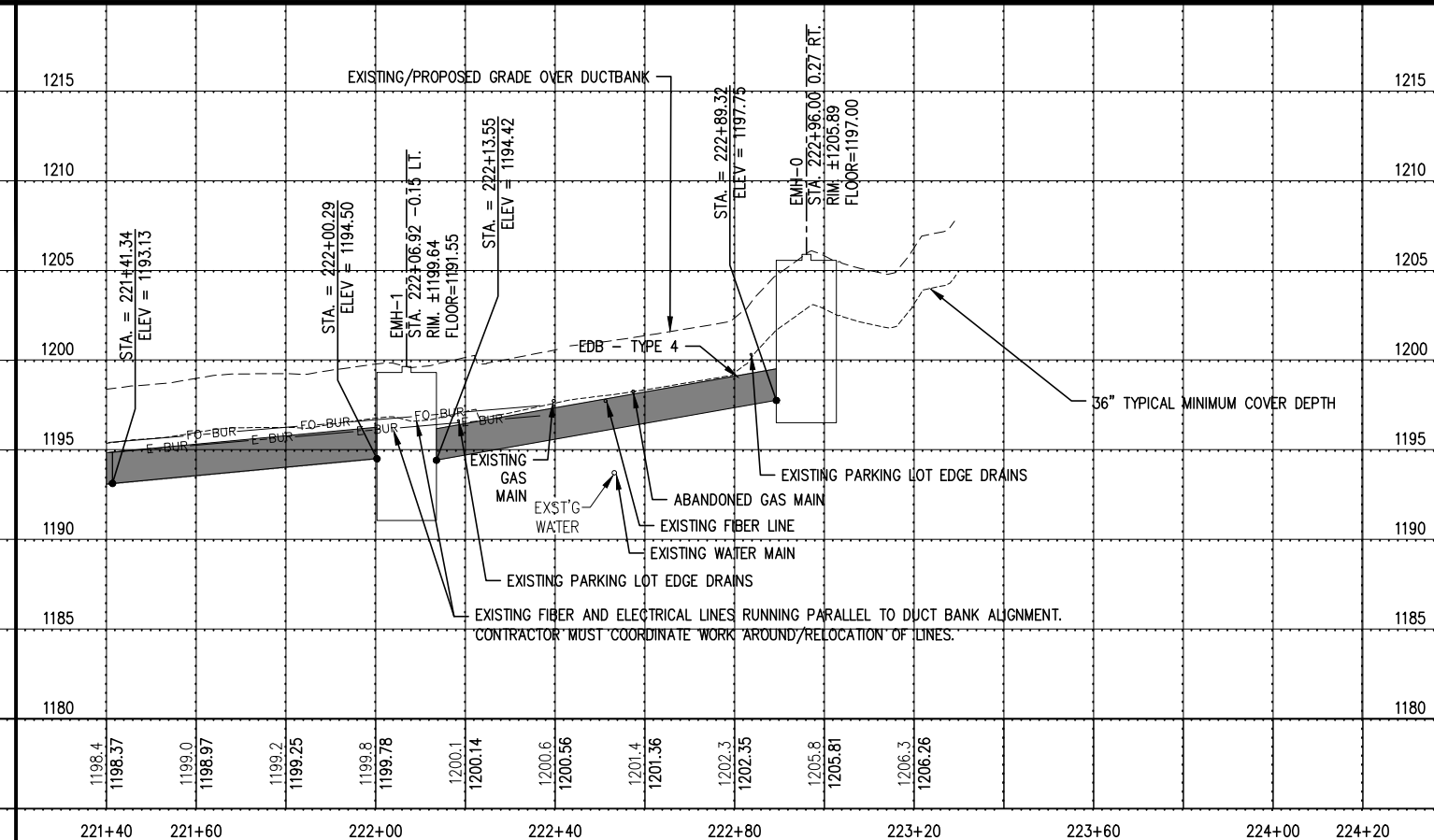
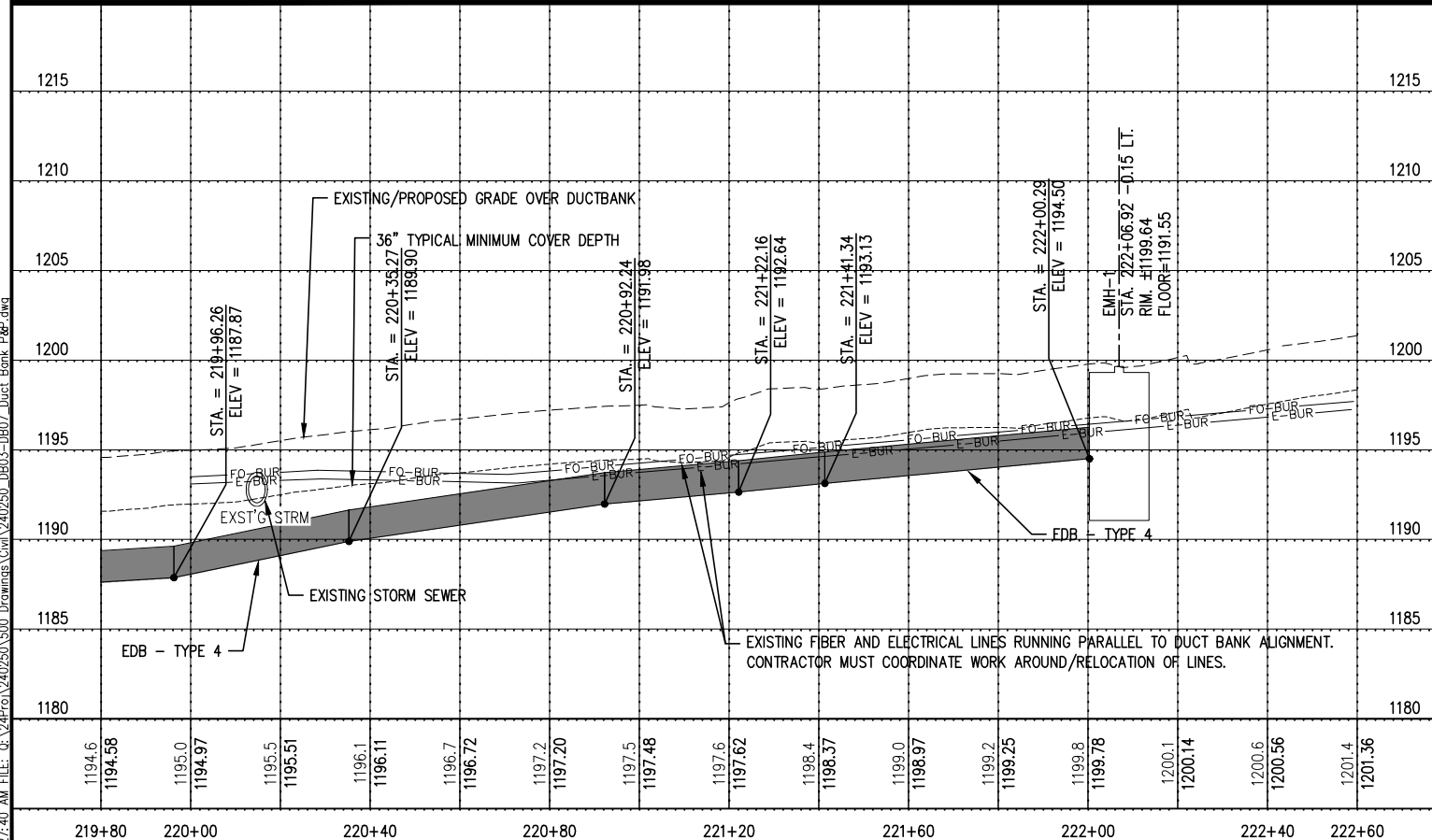
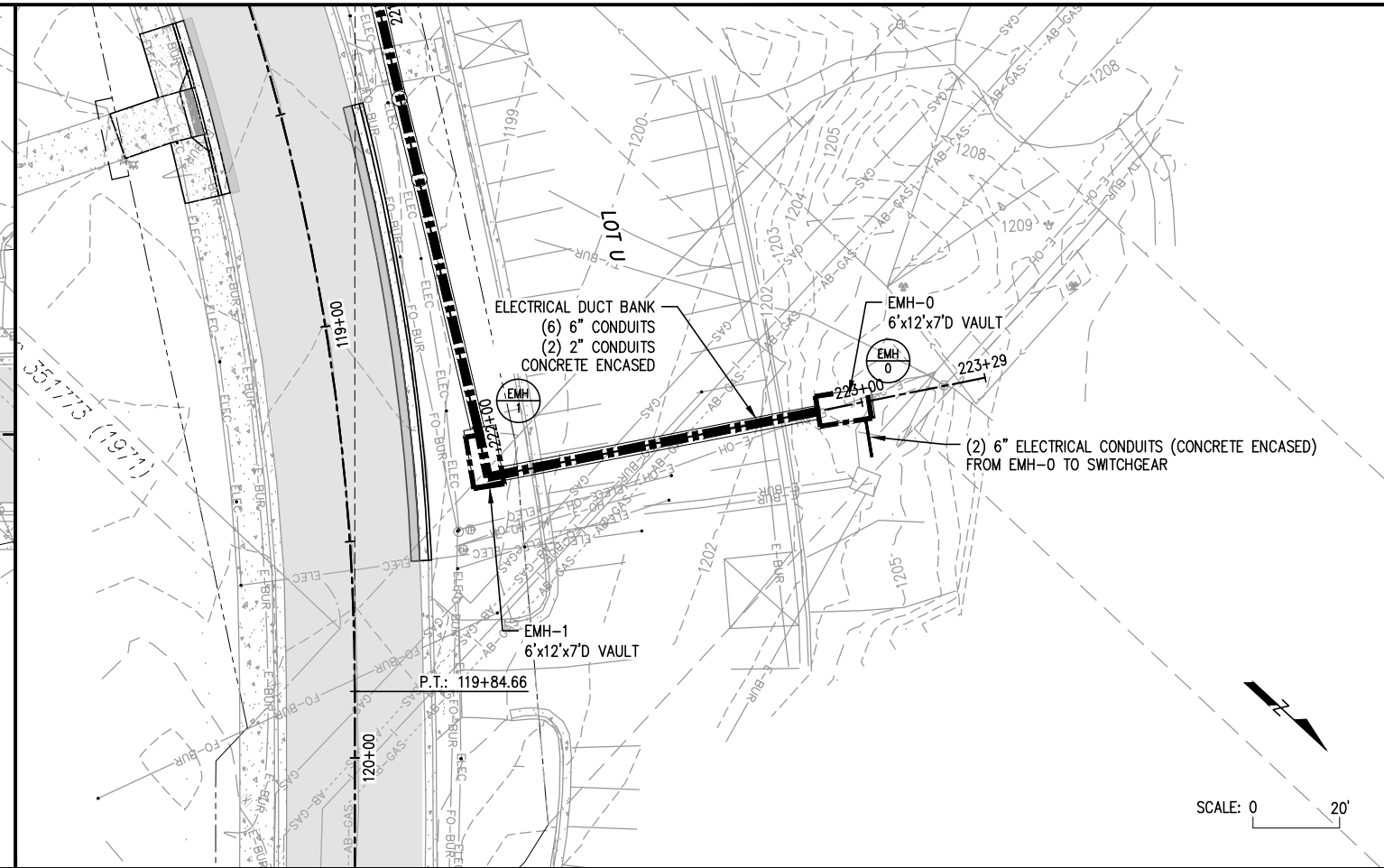
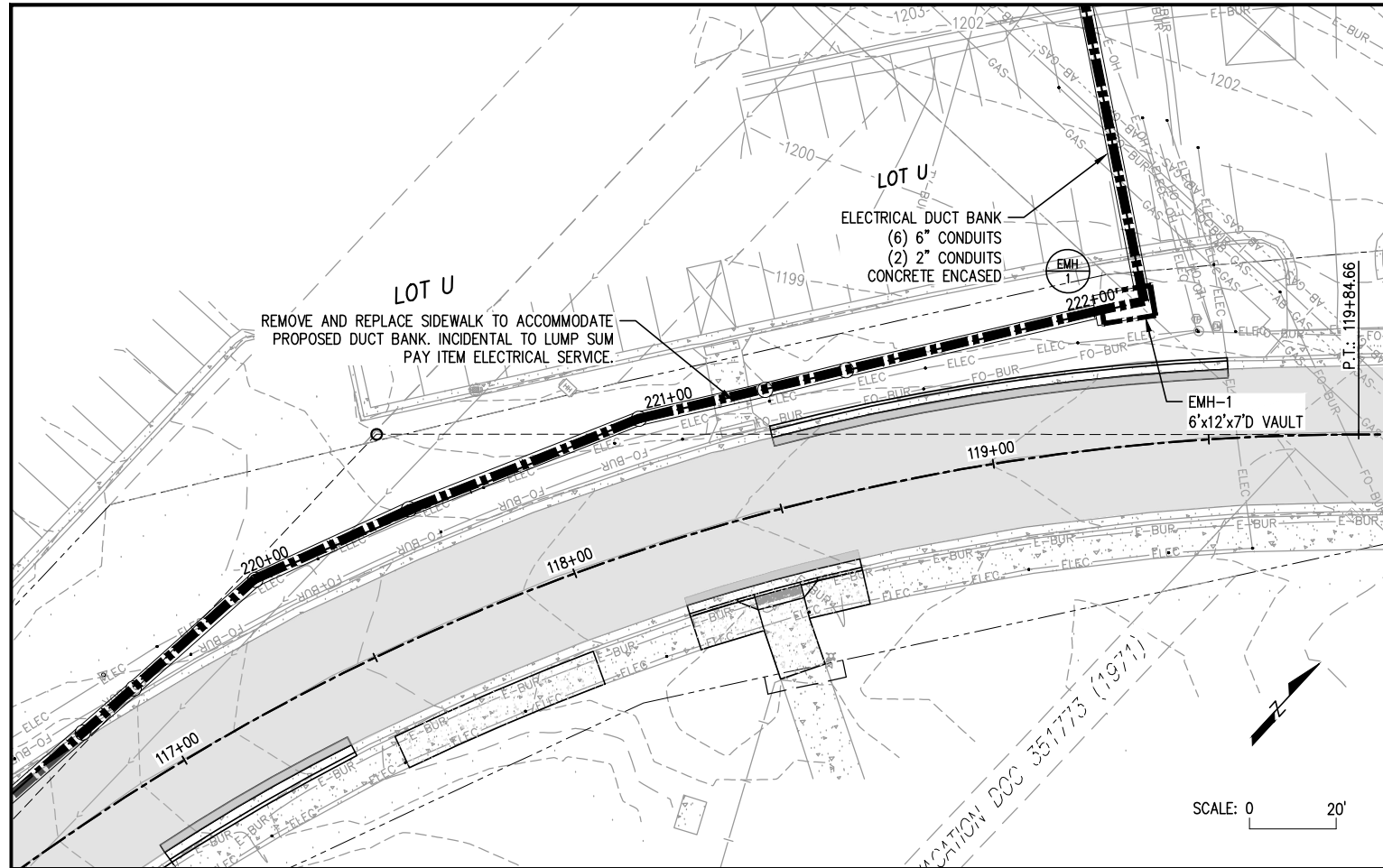
LHB PROJECT NO. 240250/240771 I HEREBY CERTIFY that this plan, specification or report was prepared by me or under my direct supervision and that I am a duly Licensed Professional Engineer under the laws of the State of Minnesota. DAVID POLSON PRINTED NAME	 SIGNATURE	02/07/2025 DATE 57246 LIC. NO.	NON-PARTICIPATING	04/04/2025	ADDENDUM 03
			S.A.P. 118-156-013	PLAN & PROFILE	
			CITY PROJECT 1464	SHEET NO. DB05 OF DB14 SHEETS	

PLOT DATE: 4/1/2025 9:27:05 AM FILE: G:\240250\240771\Drawings\Civil\240250_DB03-DB07-Duct Bank_P&P.dwg



LHB PROJECT NO. 240250/240771		NON-PARTICIPATING		04/04/2025	ADDENDUM 03
I HEREBY CERTIFY that this plan, specification or report was prepared by me or under my direct supervision and that I am a duly Licensed Professional Engineer under the laws of the State of Minnesota.		S.A.P. 118-156-013		PLAN & PROFILE	
DAVID POLSON PRINTED NAME	<i>David Polson</i> SIGNATURE	CITY PROJECT 1464		SHEET NO. DB06 OF DB14 SHEETS	
	02/07/2025 DATE				
	57246 LIC. NO.				
JUNCTION AVE/ST. MARIE ST. RECONDITIONING					

PLOT DATE: 4/4/2025 9:27:21 AM FILE: G:\240250\240250\500 Drawings\Civil\240250_DB03-DB07_Duct Bank_P&P.dwg



LHB PROJECT NO. 240250/240771		NON-PARTICIPATING		04/04/2025		ADDENDUM 03	
I HEREBY CERTIFY that this plan, specification or report was prepared by me or under my direct supervision and that I am a duly Licensed Professional Engineer under the laws of the State of Minnesota.		S.A.P. 118-156-013		JUNCTION AVE/ST. MARIE ST. RECONDITIONING		PLAN & PROFILE	
DAVID POLSON PRINTED NAME		CITY PROJECT 1464		SHEET NO. DB07 OF DB14 SHEETS			
<i>David Polson</i> SIGNATURE		DATE 02/07/2025 57246 LIC. NO.					

PLOT DATE: 4/4/2025 9:27:40 AM FILE: G:\24\Proj\240250\500 Drawings\Civil\240250_DB03-DB07_Duct Bank_P&P.dwg

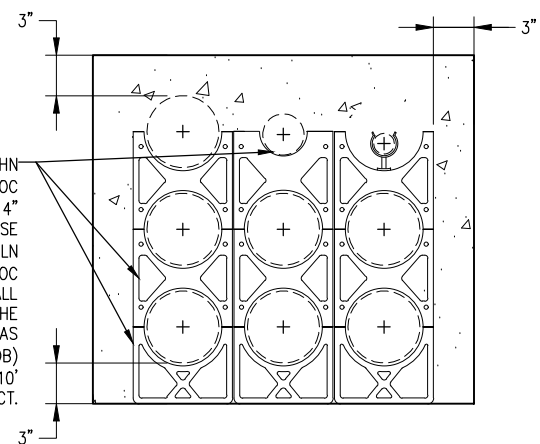
NOTES:

1. THE TYPICAL DUCT BANK CONSISTS OF CONCRETE ENCASED 2", 4", OR 6" CONDUITS IN A DESIGNATED ARRAY (ROW X COL.). RE-ARRANGEMENT OF THE DUCT BANK ARRAY MAY BE REQUIRED AT UTILITY CROSSINGS, CONNECTIONS TO ELECTRICAL VAULTS, OR IF OTHER OBSTRUCTIONS ARE ENCOUNTERED. NO CHANGE ORDERS OR MODIFICATIONS TO THE PRICE BID FOR LUMP SUM ITEM 2550.601 ELECTRICAL SERVICE SHALL BE PERMITTED REGARDLESS OF THE NUMBER OR TYPE OF SUCH RE-ARRANGEMENT(S) REQUIRED.
2. CONTRACTOR MAY PROPOSE OTHER DUCTBANK ARRANGEMENTS FOR APPROVAL BY ENGINEER. ARRANGEMENTS SHOWN DO NOT REFLECT ALL POSSIBLE COMBINATIONS THAT MAY BE REQUIRED.
3. EXCAVATION AND DISPOSAL OF TRENCH EXCAVATION MATERIAL OFF SITE SHALL NOT BE MEASURED SEPARATELY BUT SHALL BE CONSIDERED INCLUDED FOR PAYMENT UNDER ITEM 2550.601 ELECTRICAL SERVICE.

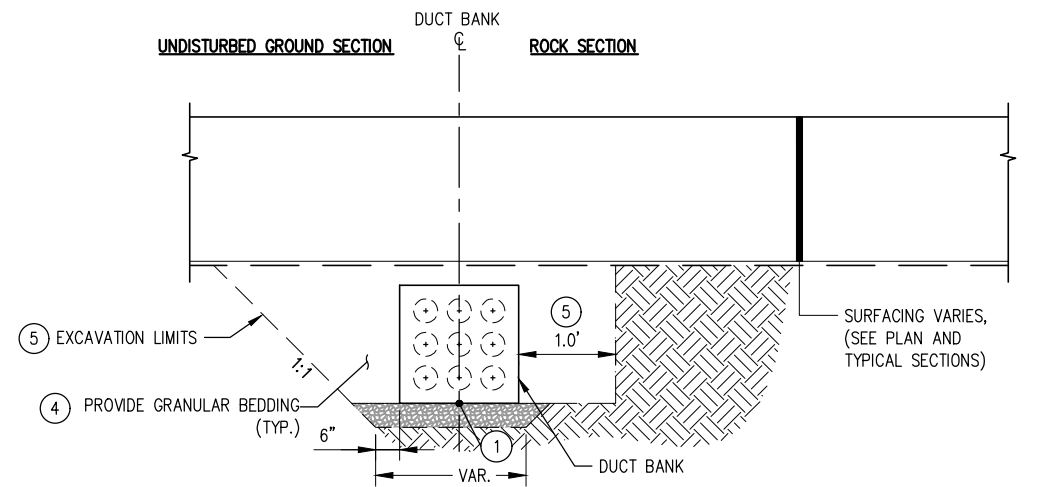
KEY NOTES:

1. PROFILE GRADE IN PLAN IS BOTTOM OF DUCT BANK.
2. CONCRETE ENCASEMENT SHALL CONSIST OF MIX HIGH EARLY CONCRETE COLORED WITH RED DYE. BACKFILL MAY COMMENCE ONLY AFTER CONCRETE STRENGTH IS 75% OF THE SPECIFIED CONCRETE STRENGTH. CONCRETE CYLINDER TESTS FOR EACH DAY'S POUR SHALL ESTABLISH TIMING. REFER TO SPECIAL PROVISIONS FOR ADDITIONAL REQUIREMENTS.
3. OWNER (MINNESOTA POWER) SHALL FURNISH CONDUIT, SPACERS, CHAIRS, ANCHORS, AND PULL TAPE. SPACERS SHALL SECURELY SUPPORT AND MAINTAIN UNIFORM SPACING OF THE PIPE ASSEMBLY AND CHAIRS SHALL PROVIDE 3 INCHES ABOVE THE BOTTOM OF THE TRENCH DURING THE CONCRETE POUR. SECURE SPACERS TO PIPES AND EARTH TO PREVENT FLOATING DURING CONCRETE POUR. PROVIDE NONFERROUS TIE WIRES TO PREVENT DISPLACEMENT OF THE PIPE DURING THE CONCRETE POUR. TIE WIRES SHALL NOT ACT AS SUBSTITUTE FOR SPACERS. PULL TAPE SHALL BE INSTALLED INSIDE OF EACH DUCT RUN.
4. SHALL NOT BE MEASURED SEPARATELY BUT SHALL BE INCLUDED FOR PAYMENT UNDER ITEM 2550.601 ELECTRICAL SERVICE.
5. NO ADJUSTMENTS (INCREASES) IN PAY QUANTITIES OR PRICES WILL BE MADE FOR TRENCH EXCAVATION BEYOND THE LIMITS SHOWN. ANY TRENCH EXCAVATION REQUIRED TO FACILITATE THE CONTRACTOR'S OPERATIONS FOR THE SEQUENCING OF THE WORK, OR TO MEET OSHA SAFETY REQUIREMENTS IS INCIDENTAL.

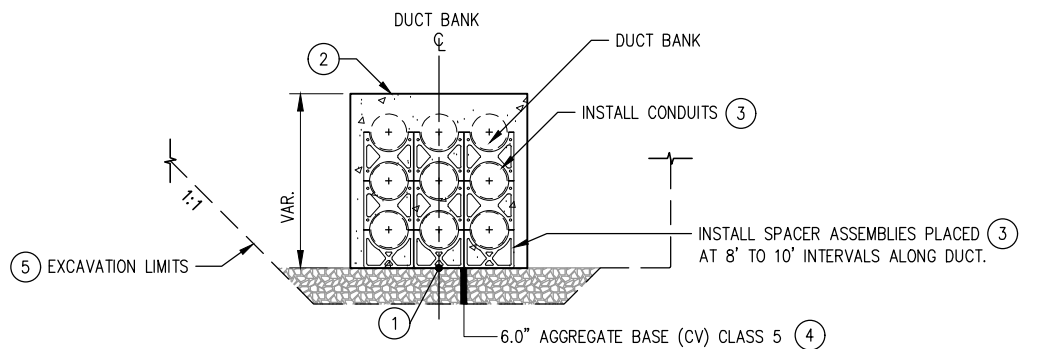
3. INSTALL 6" CARLON SNAP-LOC S288RHN BASE SPACERS, 6" CARLON SNAP-LOC S289RHN INTERMEDIATE SPACERS, 4" CARLON SNAP-LOC S288NLN BASE SPACERS, 4" CARLON SNAP-LOC S289NLN INTERMEDIATE SPACERS, AND 2" SNAP-LOC REDUCER S287J. SPACER ASSEMBLIES SHALL BE PERMANENTLY FIXED TOGETHER IN THE POSITION OF A GROUP OF SPACERS AS SHOWN ON ELECTRICAL DUCT BANK (EDB) TYPE DETAIL SHEET. PLACED AT 8' TO 10' INTERVALS ALONG DUCT.



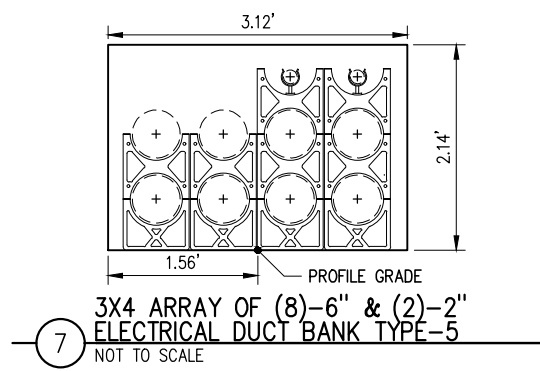
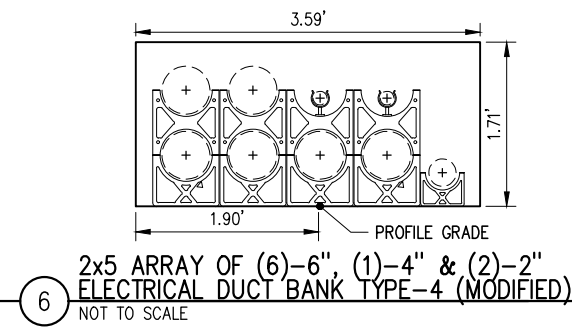
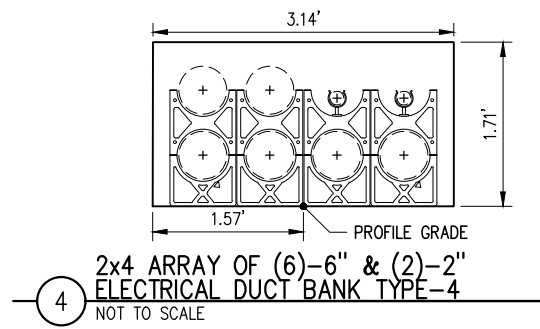
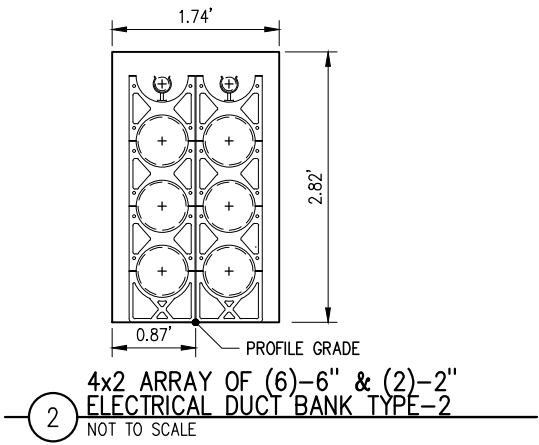
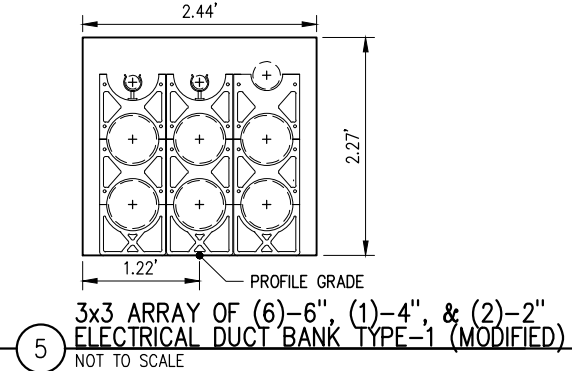
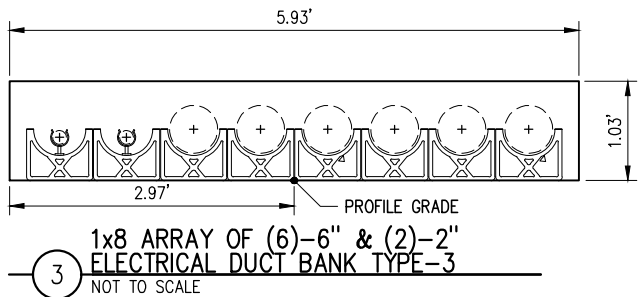
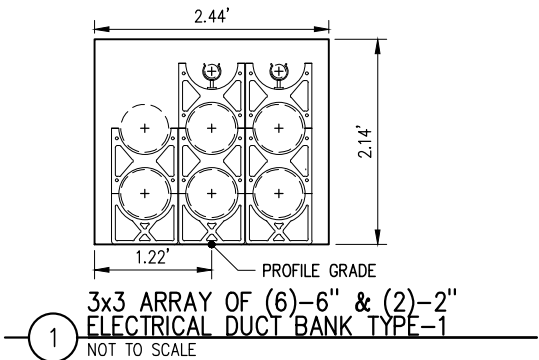
8. TYPICAL CONDUIT SPACER DETAIL
NOT TO SCALE



9. TYPICAL DUCT BANK TRENCH SECTION
NOT TO SCALE (EXAMPLE DUCTBANK SHOWN, SIMILAR FOR ALL ARRANGEMENTS)



10. TYPICAL DUCT BANK DETAIL
NOT TO SCALE (EXAMPLE DUCTBANK SHOWN, SIMILAR FOR ALL ARRANGEMENTS)



PLOT DATE: 4/1/2025 9:27:57 AM FILE: G:\244Pro\240250\500 Drawings\Civil\240250_DB08_DB_Details.dwg

LHB PROJECT NO. 240250/240771

I HEREBY CERTIFY that this plan, specification or report was prepared by me or under my direct supervision and that I am a duly Licensed Professional Engineer under the laws of the State of Minnesota.

DAVID POLSON
PRINTED NAME

David Polson
SIGNATURE

02/07/2025
DATE
57246
LIC. NO.

NON-PARTICIPATING

S.A.P. 118-156-013

CITY PROJECT 1464

JUNCTION AVE/ST. MARIE ST. RECONDITIONING

04/04/2025

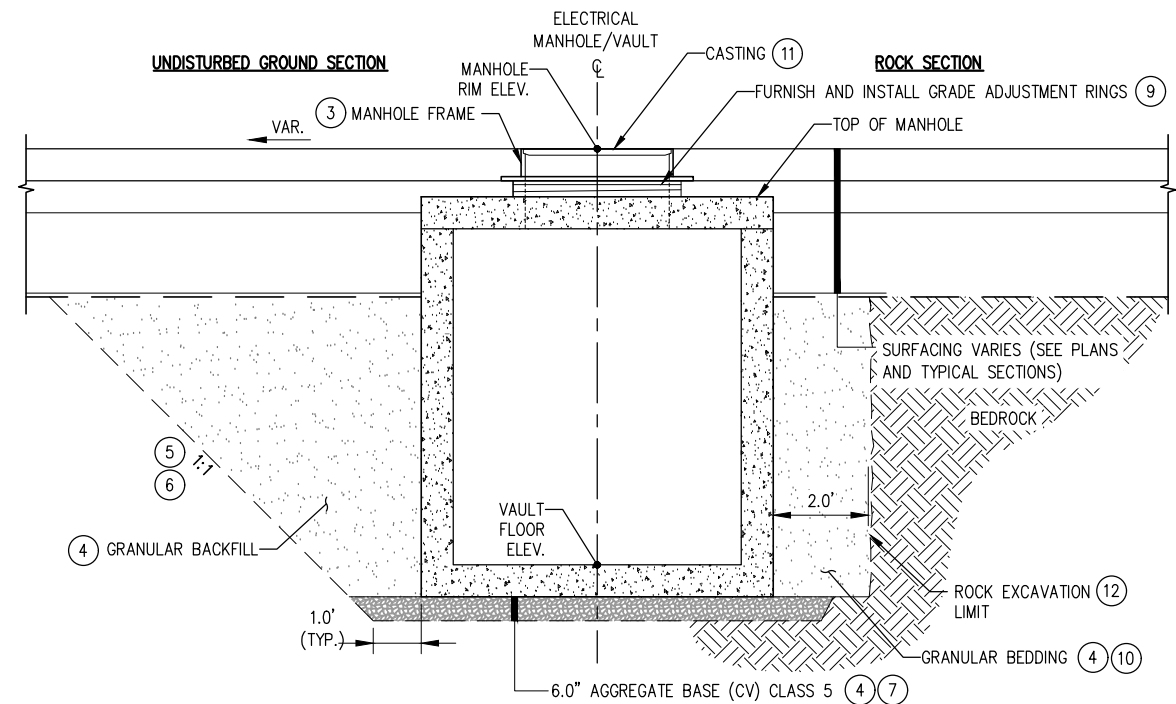
ADDENDUM 03

DUCT BANK DETAILS

SHEET NO. DB08 OF DB14 SHEETS

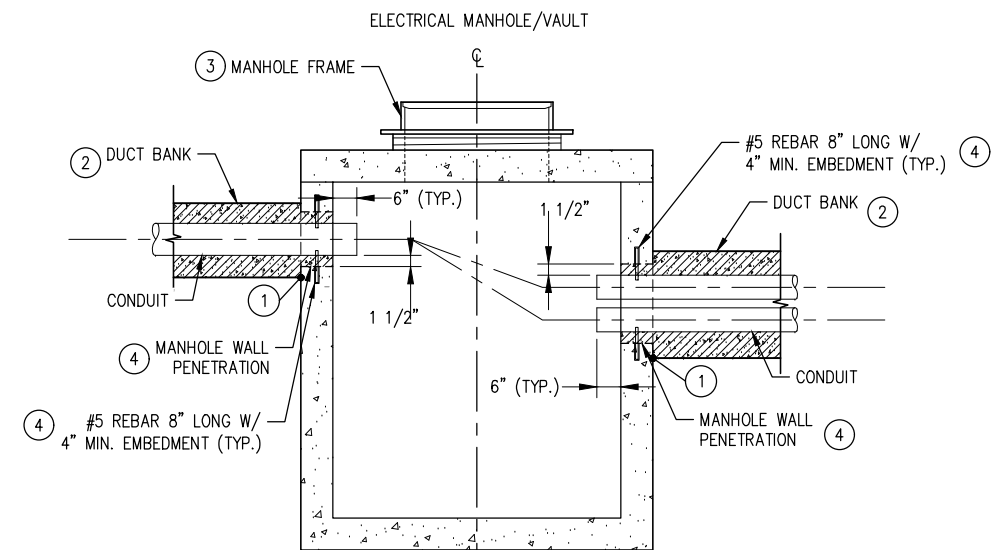
ELECTRICAL MANHOLE/VAULT KEY NOTES:

- ① PROFILE GRADE IN PLAN IS BOTTOM OF DUCT BANK.
- ② CONCRETE ENCASEMENT SHALL CONSIST OF MIX HIGH EARLY CONCRETE COLORED WITH RED DYE. BACKFILL MAY COMMENCE ONLY AFTER CONCRETE STRENGTH IS 75% OF THE SPECIFIED CONCRETE STRENGTH. CONCRETE CYLINDER TESTS FOR EACH DAY'S POUR SHALL ESTABLISH TIMING. REFER TO SPECIAL PROVISIONS FOR ADDITIONAL REQUIREMENTS.
- ③ PROVIDE FRAME AND RING CASTING (SPECIAL) PER DETAILS.
- ④ SHALL NOT BE MEASURED SEPARATELY BUT SHALL BE INCLUDED FOR PAYMENT UNDER ITEM 2550.601 ELECTRICAL SERVICE.
- ⑤ EXCAVATION AND DISPOSAL OF STRUCTURE EXCAVATION MATERIAL OFF SITE SHALL NOT BE MEASURED SEPARATELY BUT SHALL BE INCLUDED FOR PAYMENT UNDER ITEM 2550.601 ELECTRICAL SERVICE.
- ⑥ NO ADJUSTMENTS (INCREASES) IN PAY QUANTITIES OR PRICES WILL BE MADE FOR EXCAVATION BEYOND THE LIMITS SHOWN. ANY EXCAVATION REQUIRED TO FACILITATE THE CONTRACTOR'S OPERATIONS FOR THE SEQUENCING OF THE WORK, OR TO MEET OSHA SAFETY REQUIREMENTS IS INCIDENTAL.
- ⑦ 6" MINIMUM REMOVAL REQUIRED. MAXIMUM PAY LIMIT IN ROCK SHALL BE 12".
- ⑧ SEE ELECTRICAL MANHOLE DETAIL SHEETS FOR DUCT BANK PENETRATION AND ELEVATIONS.
- ⑨ FURNISH AND INSTALL GRADE ADJUSTMENT RINGS. GRADE ADJUSTMENT RINGS SHALL NOT BE MEASURED SEPARATELY FOR PAYMENT BUT SHALL BE INCLUDED FOR PAYMENT UNDER ITEM 2550.601 ELECTRICAL SERVICE.
- ⑩ ADDITIONAL GRANULAR BACKFILL 3149.2.D.1 REQUIRED TO BACKFILL ROCK EXCAVATION SHALL NOT BE MEASURED SEPARATELY BUT SHALL BE INCLUDED FOR PAYMENT UNDER ITEM 2550.601 ELECTRICAL SERVICE.
- ⑪ MINNESOTA POWER SHALL FURNISH FRAME AND CASTING COVER. CONTRACTOR SHALL INSTALL FRAME AND CASTING COVER. INSTALLATION OF FRAME AND CASTING SHALL NOT BE MEASURED SEPARATELY BUT SHALL BE INCLUDED FOR PAYMENT UNDER ITEM 2550.601 ELECTRICAL SERVICE.
- ⑫ MINIMUM PAY WIDTH IN ROCK SHALL BE 24 INCHES MEASURED FROM OUTSIDE OF STRUCTURE. MAXIMUM PAY WIDTH IN ROCK SHALL BE 36" MEASURED FROM OUTSIDE OF STRUCTURE. THIS WORK SHALL NOT BE MEASURED SEPARATELY BUT WILL BE INCLUDED FOR PAYMENT UNDER ITEM 2550.601 ELECTRICAL SERVICE.



TYPICAL ELECTRICAL MANHOLE/VAULT SECTION ⑧

NTS



TYPICAL DUCT BANK INTO MANHOLE/VAULT CONNECTION

NTS

PLOT DATE: 4/4/2025 9:28:11 AM FILE: G:\24Pro\240250\500 Drawings\Civil\240250 DB09 Vault Details.dwg

LHB PROJECT NO. 240250/240771

I HEREBY CERTIFY that this plan, specification or report was prepared by me or under my direct supervision and that I am a duly Licensed Professional Engineer under the laws of the State of Minnesota.

DAVID POLSON
PRINTED NAME

David Polson
SIGNATURE

02/07/2025
DATE
57246
LIC. NO.

NON-PARTICIPATING

S.A.P. 118-156-013

CITY PROJECT 1464

JUNCTION AVE/ST. MARIE ST. RECONDITIONING

04/04/2025

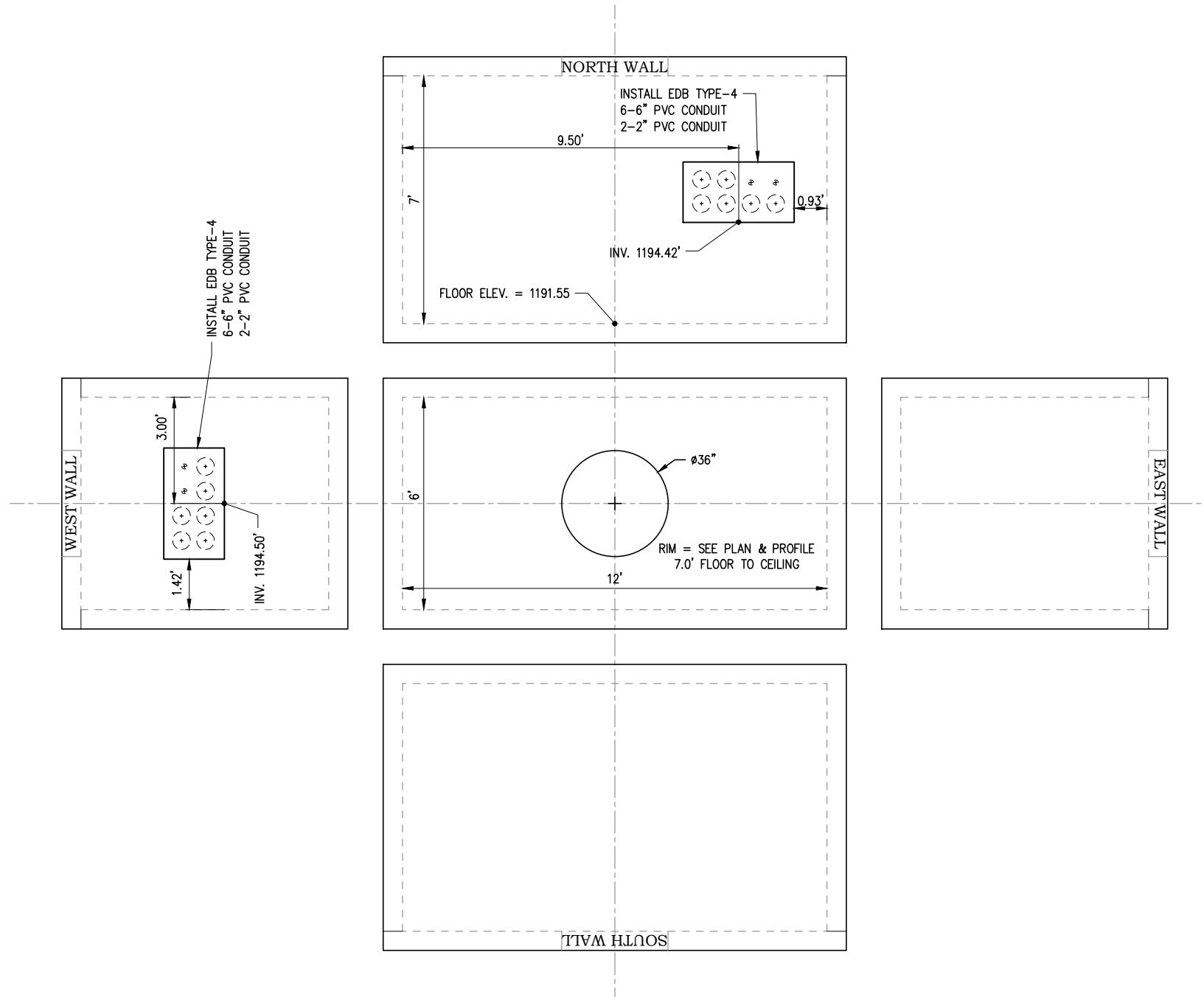
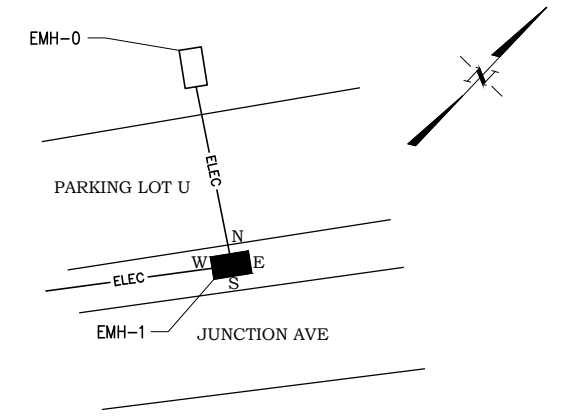
ADDENDUM 03

VAULT DETAILS


SHEET NO. DB09 OF DB14 SHEETS

NOTES:

1. DIMENSIONS TO EDGE OF DUCT BANK ARE TO THE OUTSIDE OF CONCRETE ENCASEMENT. MANHOLE MANUFACTURER SHALL DEDUCT 3" FROM THESE OUTSIDE DIMENSIONS FOR THE WALL PENETRATION.
2. PVC DUCTS SHALL EXTEND NO MORE THAN 6" INSIDE OF MANHOLE AS MEASURED FROM THE INSIDE WALL FACE.
3. SEE PLAN AND PROFILE SHEETS FOR DUCT BANK MANHOLE PENETRATIONS, RIM, AND BOTTOM OF STRUCTURE ELEVATIONS.
4. MAINTAIN 6" CLEAR DISTANCE FROM ROOF, SIDEWALLS, AND FLOOR OF STRUCTURE.
5. MAINTAIN 12" CLEAR DISTANCE FROM OTHER DUCT BANK RUNS.
6. LOCATION OF NEW DUCT BANK MANHOLE PENETRATIONS IS APPROXIMATE. NOTIFY ENGINEER IMMEDIATELY OF ANY CONFLICTS.
7. VAULT DIMENSIONS ARE TO INSIDE OF STRUCTURE.

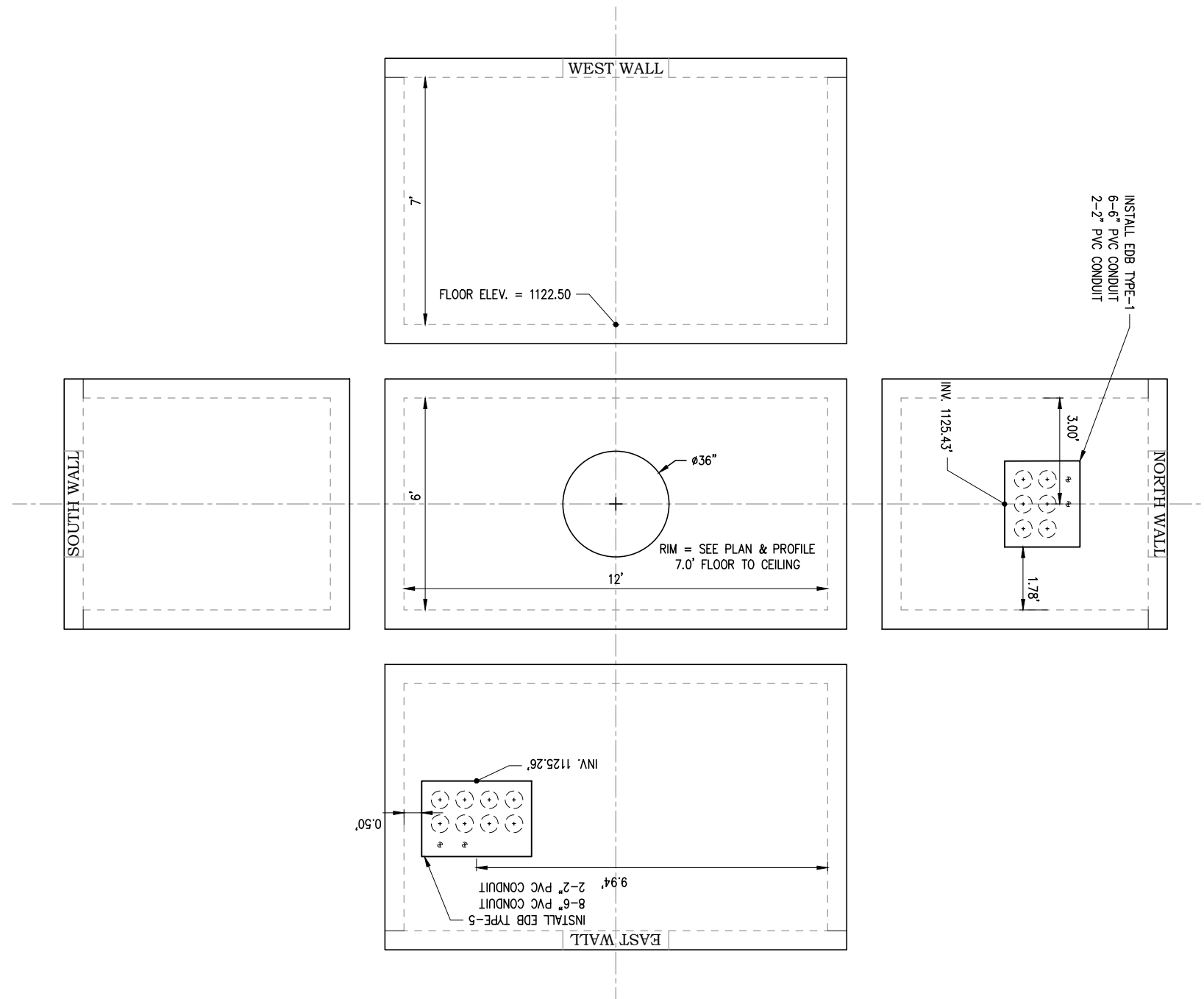
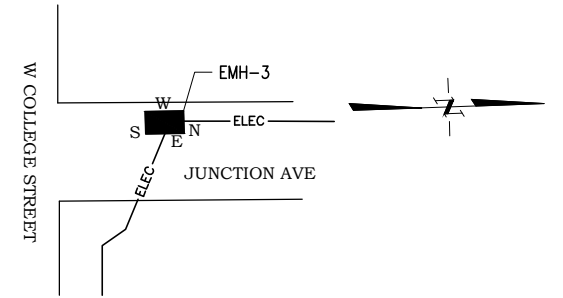


PLOT DATE: 4/4/2025 9:28:30 AM FILE: G:\244Proj\240250\500 Drawings\Civil\240250_DB09_Vault_Details.dwg

LHB PROJECT NO. 240250/240771		NON-PARTICIPATING	04/04/2025	ADDENDUM 03
I HEREBY CERTIFY that this plan, specification or report was prepared by me or under my direct supervision and that I am a duly Licensed Professional Engineer under the laws of the State of Minnesota.		S.A.P. 118-156-013	EMH-1 DETAILS	
DAVID POLSON PRINTED NAME	 SIGNATURE	02/07/2025 DATE 57246 LIC. NO.	JUNCTION AVE/ST. MARIE ST. RECONDITIONING	
			SHEET NO. DB11 OF DB14 SHEETS	

NOTES:

1. DIMENSIONS TO EDGE OF DUCT BANK ARE TO THE OUTSIDE OF CONCRETE ENCASEMENT. MANHOLE MANUFACTURER SHALL DEDUCT 3" FROM THESE OUTSIDE DIMENSIONS FOR THE WALL PENETRATION.
2. PVC DUCTS SHALL EXTEND NO MORE THAN 6" INSIDE OF MANHOLE AS MEASURED FROM THE INSIDE WALL FACE.
3. SEE PLAN AND PROFILE SHEETS FOR DUCT BANK MANHOLE PENETRATIONS, RIM, AND BOTTOM OF STRUCTURE ELEVATIONS.
4. MAINTAIN 6" CLEAR DISTANCE FROM ROOF, SIDEWALLS, AND FLOOR OF STRUCTURE.
5. MAINTAIN 12" CLEAR DISTANCE FROM OTHER DUCT BANK RUNS.
6. LOCATION OF NEW DUCT BANK MANHOLE PENETRATIONS IS APPROXIMATE. NOTIFY ENGINEER IMMEDIATELY OF ANY CONFLICTS.
7. VAULT DIMENSIONS ARE TO INSIDE OF STRUCTURE.



PLOT DATE: 4/4/2025 9:28:50 AM FILE: G:\244Pro\240250\500 Drawings\Civil\240250_DB09_Vault_Details.dwg

LHB PROJECT NO. 240250/240771

I HEREBY CERTIFY that this plan, specification or report was prepared by me or under my direct supervision and that I am a duly Licensed Professional Engineer under the laws of the State of Minnesota.

DAVID POLSON
PRINTED NAME

David Polson
SIGNATURE

02/07/2025
DATE
57246
LIC. NO.

NON-PARTICIPATING

S.A.P. 118-156-013

CITY PROJECT 1464

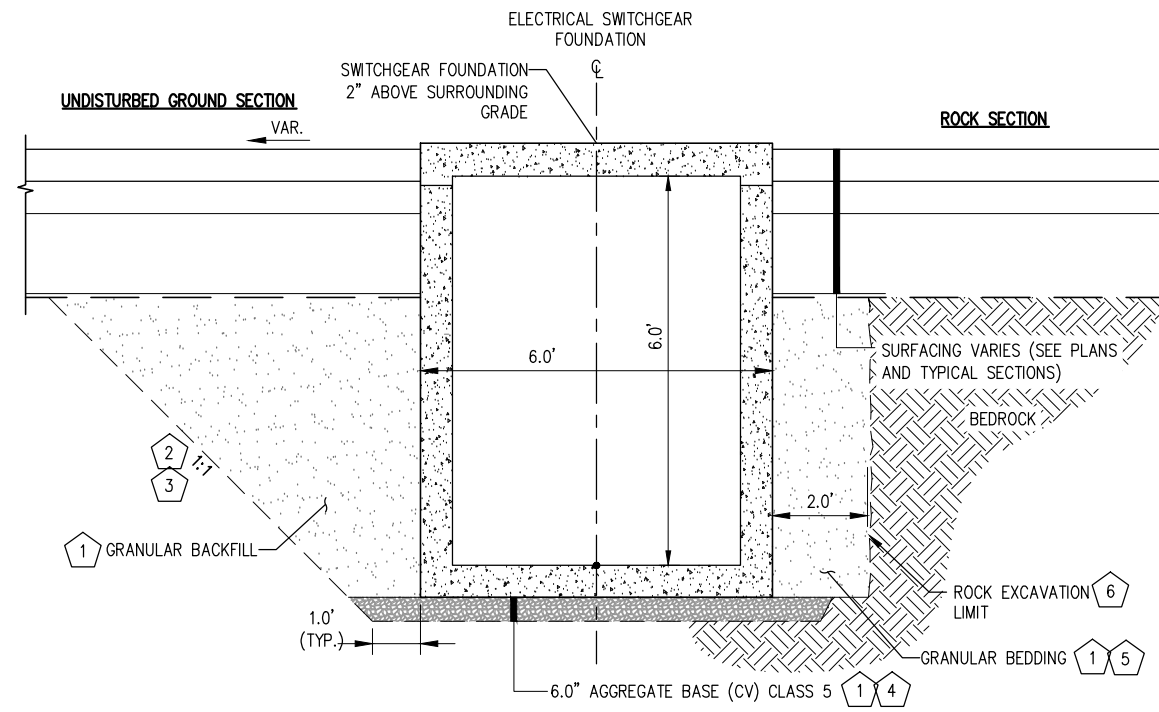
JUNCTION AVE/ST. MARIE ST. RECONDITIONING

04/04/2025

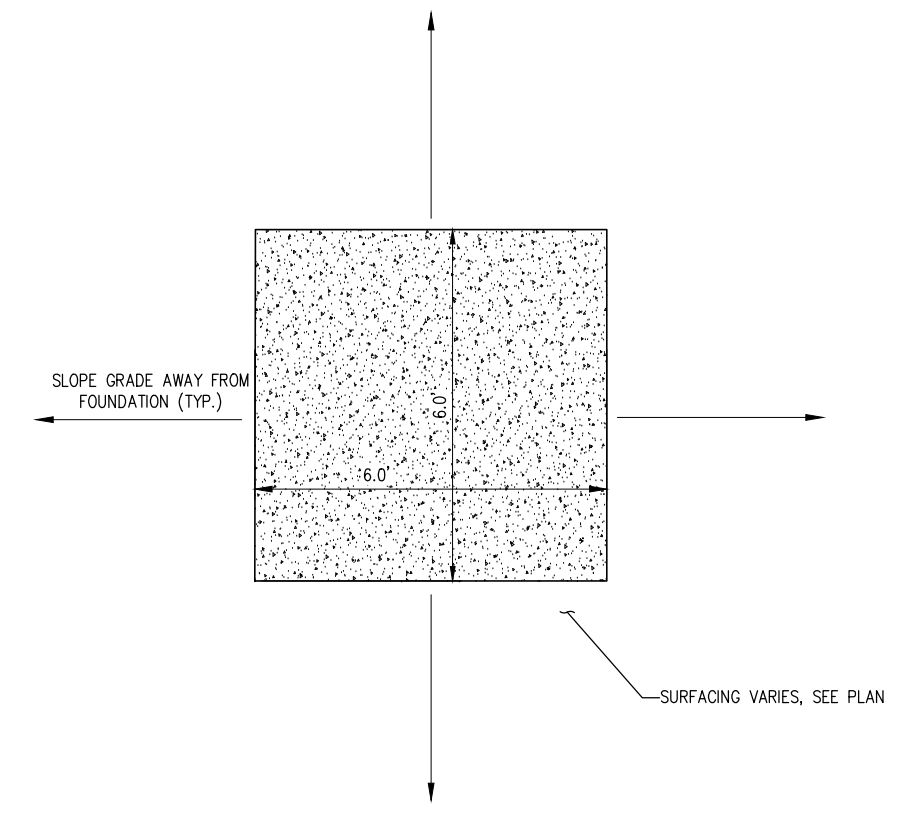
ADDENDUM 03

EMH-3 DETAILS

SHEET NO. DB13 OF DB14 SHEETS



TYPICAL ELECTRICAL SWITCHGEAR FOUNDATION SECTION
NTS



TYPICAL ELECTRICAL SWITCHGEAR FOUNDATION PLAN VIEW
NTS

ELECTIRCAL SWITCHGEAR FOUNDATION KEY NOTES:

- 1 SHALL NOT BE MEASURED SEPARATELY BUT SHALL BE INCLUDED FOR PAYMENT UNDER ITEM 2550.601 ELECTRICAL SERVICE.
- 2 EXCAVATION AND DISPOSAL OF STRUCTURE EXCAVATION MATERIAL OFF SITE SHALL NOT BE MEASURED SEPARATELY BUT SHALL BE INCLUDED FOR PAYMENT UNDER ITEM 2550.601 ELECTRICAL SERVICE.
- 3 NO ADJUSTMENTS (INCREASES) IN PAY QUANTITIES OR PRICES WILL BE MADE FOR EXCAVATION BEYOND THE LIMITS SHOWN. ANY EXCAVATION REQUIRED TO FACILITATE THE CONTRACTOR'S OPERATIONS FOR THE SEQUENCING OF THE WORK, OR TO MEET OSHA SAFETY REQUIREMENTS IS INCIDENTAL.
- 4 6" MINIMUM REMOVAL REQUIRED. MAXIMUM PAY LIMIT IN ROCK SHALL BE 12".
- 5 ADDITIONAL GRANULAR BACKFILL 3149.2.D.1 REQUIRED TO BACKFILL ROCK EXCAVATION SHALL NOT BE MEASURED SEPARATELY BUT SHALL BE INCLUDED FOR PAYMENT UNDER ITEM 2550.601 ELECTRICAL SERVICE.
- 6 MINIMUM PAY WIDTH IN ROCK SHALL BE 24 INCHES MEASURED FROM OUTSIDE OF STRUCTURE. MAXIMUM PAY WIDTH IN ROCK SHALL BE 36" MEASURED FROM OUTSIDE OF STRUCTURE. THIS WORK SHALL NOT BE MEASURED SEPARATELY, BUT WILL BE INCLUDED FOR PAYMENT UNDER ITME 2550.601 ELECTRICAL SERVICE.

PLOT DATE: 4/4/2025 9:29:00 AM FILE: G:\244Proj\240250\500 Drawings\Civil\240250_DB09 Vault_Details.dwg

LHB PROJECT NO. 240250/240771		NON-PARTICIPATING	04/04/2025	ADDENDUM 03
I HEREBY CERTIFY that this plan, specification or report was prepared by me or under my direct supervision and that I am a duly Licensed Professional Engineer under the laws of the State of Minnesota.		S.A.P. 118-156-013	SWITCHGEAR FOUNDATION DETAILS	
DAVID POLSON PRINTED NAME	 SIGNATURE	CITY PROJECT 1464	JUNCTION AVE/ST. MARIE ST. RECONDITIONING	
		02/07/2025 DATE 57246 LIC. NO.	SHEET NO. DB14 OF DB14 SHEETS	