





Purchasing Division
Finance Department
Room 120
411 West First Street
Duluth, Minnesota 55802

 218-730-5340
 purchasing@duluthmn.gov

Addendum 2
Solicitation 25-99836
Lift Station 27, 40 and 3 Rehabilitation

This addendum serves to notify all bidders of the following changes to the solicitation documents:

- Please see below for information on this addendum.

Please acknowledge receipt of this Addendum by checking the acknowledgement box within the www.bidexpress.com solicitation.

Posted: **December 11, 2025**



**ADDENDUM #2
LIFT STATION 3, 27, & 40 IMPROVEMENTS
CITY OF DULUTH
PROJECT #00616220
DECEMBER 11, 2025**

Page 1 of 1

CERTIFICATION

I hereby certify that this document was prepared by me or under my direct supervision and that I am a duly Licensed Professional Engineer under the laws of the State of Minnesota.

Print Name: Scott Chilson

Signature: *Scott R. Chilson*

Date: 12/11/2025 License #: 44287

NOTICE

This Addendum is issued to modify, explain or correct the original drawings, specifications and/or previous addendums and is hereby made a part of the Contract Documents. Please attach this Addendum to the specifications in your possession and note receipt of this Addendum in section 00 41 00 of the bid. The bid date remains unchanged.

PROJECT MANUAL

DIVISION 08 - OPENINGS

Section 08 34 59 – Access Hatches

REPLACE entire Section 08 34 59 with attached marked "Addendum #1"
(Revised accessory options on access doors)

PLANS

SHEET 00-G-1 TITLE SHEET

REPLACE entire sheet with 00-G-1

SHEET 27-C-1 LIFT STATION 27 EXISTING CONDITIONS

REPLACE entire sheet with 27-C-1R

SHEET 27-C-2 LIFT STATION 27 REMOVALS & EROSION CONTROL PLAN

REPLACE entire sheet with 27-C-2R

SHEET 27-C-3 LIFT STATION 27 SITE & UTILITY PLAN

REPLACE entire sheet with 27-C-3R

SHEET 27-C-4 LIFT STATION 27 GRADING PLAN

REPLACE entire sheet with 27-C-4R

END OF ADDENDUM

SECTION 08 34 59
ACCESS HATCHES

PART 1 GENERAL

1.01 APPLICABLE PROVISIONS

- A. Applicable provisions of Division 01 shall govern the work of this section.

1.02 APPLICABLE PUBLICATIONS

- A. The following publications of the issues listed below, but referred to thereafter by basic designation only, form a part of this specification to the extent indicated by the reference thereto.
1. American National Standard Institute (ANSI) Standard, Current Edition.
 2. American Society for Testing and Materials (ASTM), Annual Book of ASTM Standards, Current Edition.
 - a. ASTM B26 - Specification for Aluminum Alloy Sand Castings, Current Edition.
 - b. ASTM B209 - Specification for Aluminum Alloy Sheet and Plate, Current Edition.
 - c. ASTM B221 - Specification for Aluminum Alloy Extruded Bars, Rod, Wire, Shapes and Tubes, Current Edition.
 - d. ASTM B247 - Specification for Aluminum and Aluminum-Alloy Die, Hand and Rolled Ring Forgings, Current Edition.
 - e. ASTM B308 - Specification for Aluminum-Alloy 6061-T6 Standard Structural Shapes, Current Edition.

1.03 DESCRIPTION OF WORK

- A. The work under this section shall cover furnishing and installing vault doors at the openings as shown on the contract drawings and specified herein.

1.04 RELATED WORK ELSEWHERE

- A. Procurement and Contracting Requirements - Division 00 (All Sections)
- B. Metal Fabrications - Division 05
- C. Cast-in-Place Concrete - Division 03

1.05 SUBMITTALS

- A. Contractor shall submit such product literature and catalog cuts of materials to be supplied to relate these materials to the specifications. Information shall be in conformance with requirements of Submittals - Division 01 of these specifications.
- B. Submittals shall indicate the intended equipment arrangement, major support and attachment requirements, plot area and dimensioned data.

PART 2 PRODUCTS AND MATERIALS

2.01 TYPE 1 DOORS (H-20 Rated) - Shall be used at Lift Station No. 40

A. FRAMES

1. Frames shall be manufactured with a minimum of 1/4 inch thick, one piece aluminum extruded frame, with a continuous concrete anchor and sliding nut rail as part of the one piece extrusion. All aluminum in contact with concrete shall be coated to prevent corrosion.
2. Frame shall have a mill finish.
3. Frame shall have integral nutrail on all sides.

B. DOORS

1. Doors shall be 1/4 inch thick (minimum) aluminum diamond plate reinforced with aluminum stiffeners to withstand a liveload of H-20 designation. The inside of the frame shall have a door-support ledge on two (2) sides. Both frame and ledge must be supported by a full bed of concrete. The doors shall open to 90 degrees and lock automatically in that position with an aluminum positive locking arm and stainless steel lifting handle. The doors shall have lift assisting shocks. Doors shall close flush with the frame and rest on built-in EDPM cushion/gasket.
2. Doors shall be provided with stainless steel hinges with tamper-proof fasteners. Doors shall be provided with a stainless steel recessed locking hasp for a standard padlock. Locking hasp and padlock shall be located in a contained area of the frame or a box that will not allow a lock or key to be dropped through the hatch. The opening into the lock containment area shall be a minimum of 3" x 3". **Locking hasps that extend above the door shall not be acceptable.**
3. The door shall close flush with the top of the frame, resting on a 1/2" wide lip around the entire inside of the frame for added support.
4. When closed the door and all accessories shall provide a smooth surface which will not interfere with lawn mowing or snow plowing.
5. Doors shall be single or double leaf as shown on the contract drawings. Double leaf doors shall provide the clear opening specified without beams between the hatch sections.
6. **Unit shall lock with a T-316 stainless steel slam lock with removable keys and have a non-corrosive handle.**

C. FALL PROTECTION

1. Grating made from aluminum or fiberglass designed to support a live load of 300 PSF. Grate shall be hinged to frame with stainless steel hinges and a hold arm capable of holding grate in the fully open 90-degree position. Stainless steel lifting assists and padlock-able hasp required.
2. Grating shall allow for access of sewer cleaning equipment. This access shall consist of a 4" slot between fall protection grating and the hatch frame or provide a minimum of two 4-inch by 4-inch banded opening within the grating. Maximum allowable opening between hatch frame and grating is 6".

D. ACCEPTABLE MANUFACTURER

1. Door shall be Series H1R by Halliday Products, Orlando FL, or Equal.

2.02 TYPE 2 DOORS (H-20 Rated) – Shall be used at Lift Station No. 27

A. FRAMES

1. Frames shall be manufactured with a minimum of 1/4 inch thick, one piece aluminum extruded frame, with a continuous concrete anchor and sliding nut rail as part of the one piece extrusion. All aluminum in contact with concrete shall be coated to prevent corrosion.
2. Frame shall have a mill finish.

B. DOORS

1. Doors shall be 1/4 inch thick (minimum) aluminum diamond plate reinforced with aluminum stiffeners to withstand a liveload of H-20 designation. The inside of the frame shall have a door-support ledge on two (2) sides. Both frame and ledge must be supported by a full bed of concrete. The doors shall open to 90 degrees and lock automatically in that position with an aluminum positive locking arm and stainless steel lifting handle. The doors shall have lift assisting shocks. Doors shall close flush with the frame and rest on built-in EDPM cushion/gasket.
2. Doors shall be provided with stainless steel hinges with tamper-proof fasteners. Doors shall be provided with a stainless steel recessed locking hasp for a standard padlock. Locking hasp and padlock shall be located in a contained area of the frame or a box that will not allow a lock or key to be dropped through the hatch. The opening into the lock containment area shall be a minimum of 3" x 3". **Locking hasps that extend above the door shall not be acceptable.**
3. The door shall close flush with the top of the frame, resting on a 1/2" wide lip around the entire inside of the frame for added support.
4. Doors furnished with a frame drain shall have drain piping supplied by contractor to a suitable location as directed by the Engineer.

5. When closed the door and all accessories shall provide a smooth surface which will not interfere with lawn mowing or snow plowing.
6. Doors shall be single or double leaf, as shown on the contract drawings. Double leaf doors shall provide the clear opening specified without beams between the hatch sections.
7. **Unit shall lock with a T-316 stainless steel slam lock with removable keys and have a non-corrosive handle.**

C. FALL PROTECTION

1. Grating made from aluminum or fiberglass designed to support a live load of 300 PSF. Grate shall be hinged to frame with stainless steel hinges and a hold arm capable of holding grate in the fully open 90-degree position. Stainless steel lifting assists and padlock-able hasp required.
2. Grating shall allow for access of sewer cleaning equipment. This access shall consist of a 4" slot between fall protection grating and the hatch frame or provide a minimum of two 4-inch by 4-inch banded opening within the grating. Maximum allowable opening between hatch frame and grating is 6".

D. ACCEPTABLE MANUFACTURER

1. Door shall be Series H2W by Halliday Products, Orlando FL, or Equal.

2.03 TYPE 3 DOORS - Shall be used at Lift Station No. 3

A. FRAMES

1. Frames shall be manufactured with a minimum of 1/4 inch thick, one piece aluminum extruded frame, with a continuous concrete anchor and sliding nut rail as part of the one piece extrusion. All aluminum in contact with concrete shall be coated to prevent corrosion.
2. Frame shall have a mill finish.

B. DOORS

1. Doors shall be 1/4 inch thick (minimum) aluminum diamond plate reinforced with aluminum stiffeners. The inside of the frame shall have a door-support ledge on two (2) sides. Both frame and ledge must be supported by a full bed of concrete. The doors shall open to 90 degrees and lock automatically in that position with an aluminum positive locking arm and stainless steel lifting handle. The doors shall have lift assisting shocks. Doors shall close flush with the frame and rest on built-in **EDPM** cushion/gasket.
2. Doors shall be provided with stainless steel hinges with tamper-proof fasteners. Doors shall be provided with a stainless steel recessed locking hasp for a standard padlock. Locking hasp and padlock shall be located in a contained area of the frame or a box that will not allow a lock or key to be dropped through the hatch. The opening into the lock containment area shall be a minimum of 3" x 3".
~~a. Padlock bar on center leaf shall be acceptable.~~
3. The door shall close flush with the top of the frame, resting on a 1/2" wide lip around the entire inside of the frame for added support.
4. When closed the door and all accessories shall provide a smooth surface which will not interfere with lawn mowing or snow plowing.
5. Doors shall be single, double leaf, or triple leaf as shown on the contract drawings. Double and triple leaf doors shall provide the clear opening specified without beams between the hatch sections, unless noted otherwise.
6. **Unit shall lock with a T-316 stainless steel slam lock with removable keys and have a non-corrosive handle.**

C. FALL PROTECTION

1. Grating made from aluminum or fiberglass designed to support a live load of 300 PSF. Grate shall be hinged to frame with stainless steel hinges and a hold arm capable of holding grate in the fully open 90-degree position. Stainless steel lifting assists and padlock-able hasp required.
2. Grating shall allow for access of sewer cleaning equipment. This access shall consist of a 4" slot between fall protection grating and the hatch frame or provide a minimum of two 4-inch by 4-inch

banded opening within the grating. Maximum allowable opening between hatch frame and grating is 6".

- D. ACCEPTABLE MANUFACTURER
 - 1. Door shall be Series S3S by Halliday Products, Orlando FL, or Equal.

2.04 GUARANTEE

- A. Vault door units including fall protective grating if specified shall be guaranteed against defects in materials and workmanship for a period of 5 years.

PART 3 CONSTRUCTION METHODS

3.01 INSPECTION

- A. Verify openings conditions and that openings are ready to receive work under this section.

3.02 INSTALLATION

- A. Installation of equipment shall be in accordance with manufacturer's instructions and reviewed shop drawings.
- B. Orientation of door openings shall be in accordance with the contract drawings.
 - 1.

END OF SECTION

CITY OF DULUTH

DEPARTMENT OF PUBLIC WORKS AND UTILITIES - ENGINEERING DIVISION

LOCATION: DULUTH, MN
 CONSTRUCTION PLANS FOR: LIFT STATIONS NO. 3, 27 & 40 IMPROVEMENTS
 PROJECT NUMBER: 2271

GOVERNING SPECIFICATIONS

THE 2020 EDITION OF THE MINNESOTA DEPARTMENT OF TRANSPORTATION "STANDARD SPECIFICATIONS FOR CONSTRUCTION" SHALL GOVERN.
 AVAILABLE AT:
<http://www.dot.state.mn.us/pre-letting/spec/index.html>

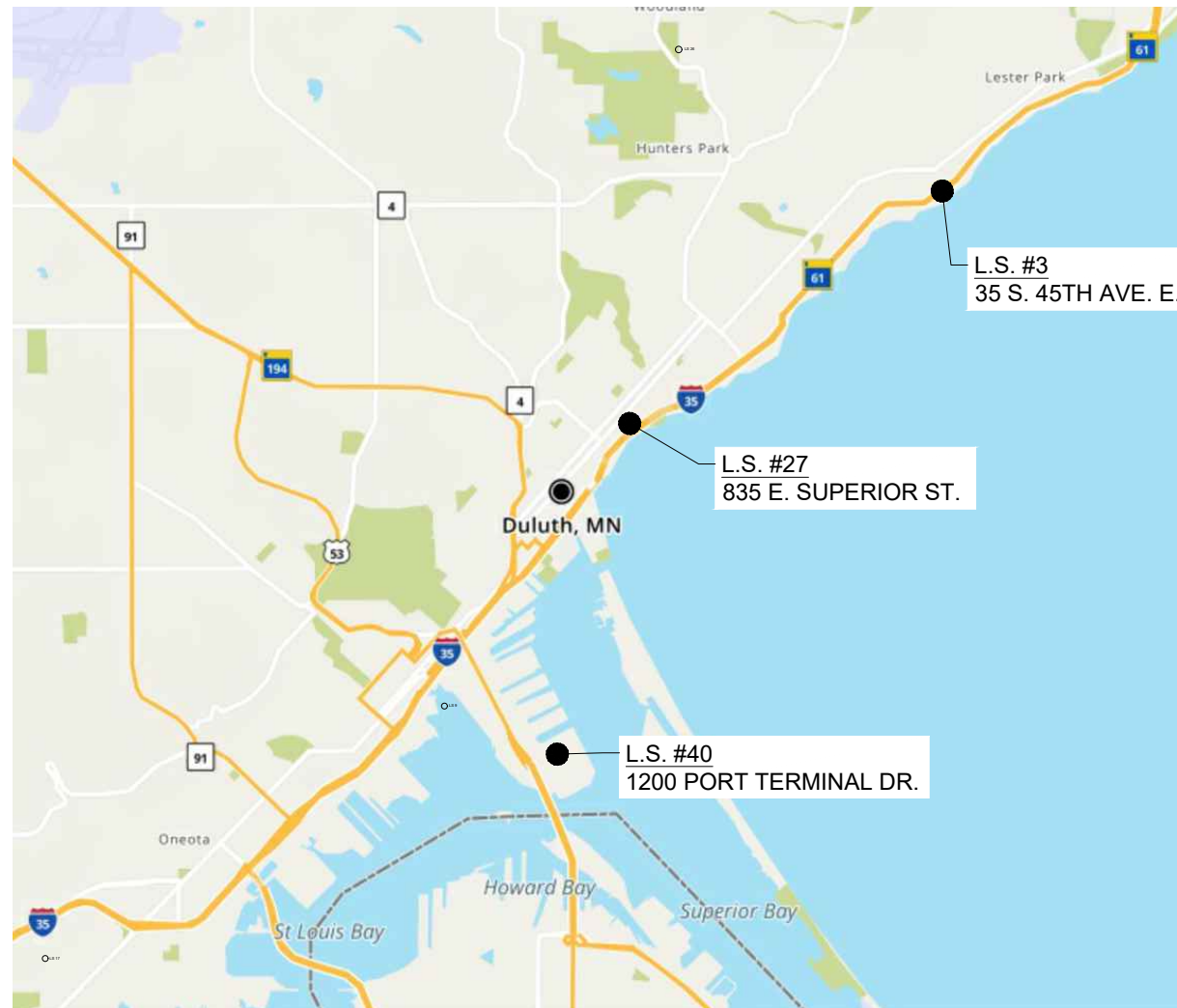
THE 2019 EDITION OF THE CITY OF DULUTH PUBLIC WORKS AND UTILITIES DEPARTMENT CONSTRUCTION STANDARDS AND SUPPLEMENTS OR ADDENDUMS SHALL APPLY.
 AVAILABLE AT:
<http://www.duluthmn.gov/engineering/standard-construction-specifications/>

THE SUBSURFACE UTILITY INFORMATION IN THIS PLAN IS UTILITY QUALITY LEVEL D. THIS QUALITY LEVEL WAS DETERMINED ACCORDING TO THE GUIDELINES OF C/ASCE 38-2, ENTITLED "STANDARD GUIDELINES FOR THE COLLECTION AND DEPICTION OF EXISTING SUBSURFACE UTILITY DATA."

WARNING:
 LOCATION OF UNDERGROUND UTILITIES TO BE VERIFIED BY CONTRACTOR. CALL BEFORE DIGGING. GOPHER STATE ONE CALL 1-800-252-1166 AS REQUIRED BY LAW.

LEGEND

W	EXISTING WATER MAIN
W-G	EXISTING GATE VALVE & HYDRANT
W-S	WATER SERVICE & CURB STOP
W-V	PROPOSED WATERMAIN, VALVE, & HYDRANT
W-S	PROPOSED WATER SERVICE & CURB STOP
SM	EXISTING SANITARY SEWER & MANHOLE
FM	EXISTING FORCEMAIN
SS	EXISTING STORM SEWER & INLET
SS	PROPOSED STORM SEWER & INLET
SS	PROPOSED MANHOLE & SEWER MAIN
E	BURIED ELECTRIC
G	BURIED GAS & VALVE
TV	BURIED CABLE TELEVISION
T	BURIED TELEPHONE
FO	BURIED FIBER OPTICS
OH	OVERHEAD UTILITY
RR	RAILROAD TRACKS
CG	EXISTING CURB & GUTTER
PCG	PROPOSED CURB & GUTTER
SW	EXISTING SIDEWALK
PSW	PROPOSED SIDEWALK
CP	EXISTING CULVERT PIPE
PCP	PROPOSED CULVERT PIPE
FL	FENCE LINE
DA	DRAINAGE ARROW
SF	SILT FENCE
ROW	RIGHT-OF-WAY
BL	BASELINE
PL	PROPERTY LINE
TL	TREE LINE
BM	BENCHMARK
IP	IRON PIPE
IR	IRON ROD
CP	CONTROL POINT
UPG	UTILITY POLE & GUY
SB	SOIL BORING
LP	LIGHT POLE
PE	PEDESTAL
SS	STREET SIGN
MB	MAILBOX
FP	FLAGPOLE
TD	TREE - DECIDUOUS
TC	TREE - CONIFEROUS
TR	TREE TO BE REMOVED



CITY OF DULUTH NORTH
SITE LOCATION MAP
 NOT TO SCALE

THE SUBSURFACE UTILITY INFORMATION IN THIS PLAN IS UTILITY QUALITY LEVEL D. THIS QUALITY LEVEL WAS DETERMINED ACCORDING TO THE GUIDELINES OF C/ASCE 38-2, ENTITLED "STANDARD GUIDELINES FOR THE COLLECTION AND DEPICTION OF EXISTING SUBSURFACE UTILITY DATA."

COLOR HAS BEEN USED IN THIS SET OF CONTRACT DOCUMENTS TO DEPICT DESIGN CONCEPTS. THIS SET OF CONTRACT DOCUMENTS IS INTENDED TO BE VIEWED IN ELECTRONIC OR PRINTED COLOR FORMAT. IF THIS SET OF CONTRACT DOCUMENTS IS BEING VIEWED ELECTRONICALLY OR IN A PRINTED FORMAT THAT IS NOT IN COLOR, IT IS THE RESPONSIBILITY OF THE CONTRACTOR TO REQUEST EITHER AN ELECTRONIC OR PRINTED COLOR VERSION BEFORE WORK IS EXECUTED. FAILURE TO REQUEST COLOR DOCUMENTS WILL NOT BE ALLOWED AS A VALID CAUSE FOR ADDITIONAL COMPENSATION.

SHEET INDEX

00 - GENERAL SHEETS

- 00-G-1 TITLE SHEET
- 00-G-2 SHEET IDENTIFIERS AND ABBREVIATIONS
- 00-G-3 GENERAL NOTES
- 00-E-1 ELECTRICAL SYMBOLS AND ABBREVIATIONS
- 00-E-2 ELECTRICAL SYMBOLS AND ABBREVIATIONS

03 - LIFT STATION NO.3

- 03-C-1 LIFT STATION 3 REMOVALS & SITE PLAN
- 03-PM-1 LIFT STATION 3 COVER REPLACEMENT PLAN
- 03-PM-2 LIFT STATION 3 ACCESS DOOR DETAIL
- 03-E-1 LIFT STATION 3 ELECTRICAL PLAN

27 - LIFT STATION NO.27

- 27-C-1R LIFT STATION 27 EXISTING CONDITIONS
- 27-C-2R LIFT STATION 27 REMOVALS & EROSION CONTROL PLAN
- 27-C-3R LIFT STATION 27 SITE & UTILITY PLAN
- 27-C-4R LIFT STATION 27 GRADING PLAN
- 27-C-5 LIFT STATION 27 TRAFFIC CONTROL PLAN
- 27-C-6 LIFT STATION 27 TRAFFIC CONTROL PLAN
- 27-C-7 LIFT STATION 27 TRAFFIC CONTROL PLAN
- 27-C-8 LIFT STATION 27 TRAFFIC CONTROL PLAN
- 27-C-9 LIFT STATION 27 TRAFFIC CONTROL PLAN
- 27-PM-1 EXISTING CONDITIONS & REMOVALS PLAN AND SECTION
- 27-PM-2 LIFT STATION 27 MECHANICAL PLAN
- 27-PM-3 LIFT STATION 27 MECHANICAL SECTION
- 27-E-1 LIFT STATION 27 ELECTRICAL SITE PLAN
- 27-E-2 LIFT STATION 27 ONE-LINE DIAGRAM
- 27-E-3 LIFT STATION 27 SCADA DIAGRAM
- 27-E-4 LIFT STATION 27 P&ID
- 27-E-5 LIFT STATION 27 PHOTOS

40 - LIFT STATION NO.40

- 40-C-1 LIFT STATION 40 EXISTING CONDITIONS
- 40-C-2 LIFT STATION 40 REMOVALS & EROSION CONTROL PLAN
- 40-C-3 LIFT STATION 40 SITE & UTILITY PLAN
- 40-C-4 LIFT STATION 40 GRADING PLAN
- 40-PM-1 LIFT STATION 40 EXISTING CONDITIONS & REMOVALS PLAN
- 40-PM-2 LIFT STATION 40 EXISTING CONDITIONS & REMOVALS SECTION
- 40-PM-3 LIFT STATION REMOVAL PHOTOS
- 40-PM-4 LIFT STATION 40 MECHANICAL PLANS
- 40-PM-5 LIFT STATION 40 MECHANICAL SECTION
- 40-E-1 LIFT STATION 40 ELECTRICAL SITE PLAN
- 40-E-2 LIFT STATION 40 ONE-LINE DIAGRAM
- 40-E-3 LIFT STATION 40 SCADA DIAGRAM
- 40-E-4 LIFT STATION 40 P&ID
- 40-E-5 LIFT STATION 40 PHOTOS
- 40-E-6 LIFT STATION 40 PHOTOS

99 - DETAILS & SCHEDULES

- 99-C-1 CIVIL DETAILS
- 99-C-2 CIVIL DETAILS
- 99-C-3 CIVIL DETAILS
- 99-C-4 CIVIL DETAILS
- 99-PM-1 PROCESS MECHANICAL DETAILS
- 99-PM-2 PROCESS MECHANICAL DETAILS
- 99-E-1 ELECTRICAL DETAILS
- 99-E-2 ELECTRICAL DETAILS & SCHEDULES

WARNING
 LOCATION OF UNDERGROUND UTILITIES TO BE VERIFIED BY CONTRACTOR
GOPHER STATE ONE CALL
 CALL BEFORE DIGGING,
 1-800-252-1166
 REQUIRED BY LAW



I HEREBY CERTIFY THAT THIS PLAN WAS PREPARED BY ME OR UNDER MY DIRECT SUPERVISION AND THAT I AM A DULY LICENSED PROFESSIONAL ENGINEER UNDER THE LAWS OF THE STATE OF MINNESOTA.

Scott R. Chilson 12/10/25 44287
 PROJECT ENGINEER: SCOTT R. CHILSON DATE REG NO.

CITY APPROVAL

APPROVED _____ CHIEF ENGINEER OF TRANSPORTATION DATE _____

APPROVED _____ CHIEF ENGINEER OF UTILITIES DATE _____

APPROVED _____ CITY ENGINEER DATE _____

PROJECT DATE: OCTOBER 2025	DRAWN BY: ARL	No. 1	DATE 12-10-2025
	DESIGNED BY: SRC		
	CHECKED BY: SRC		

REVISIONS
 ADDENDUM NO.2

BY ARL

I HEREBY CERTIFY THAT THIS PLAN, REPORT, OR SPECIFICATION WAS PREPARED BY ME OR UNDER MY DIRECT SUPERVISION AND THAT I AM A DULY LICENSED PROFESSIONAL ENGINEER UNDER THE LAWS OF THE STATE OF MINNESOTA. DATE: December 10, 2025

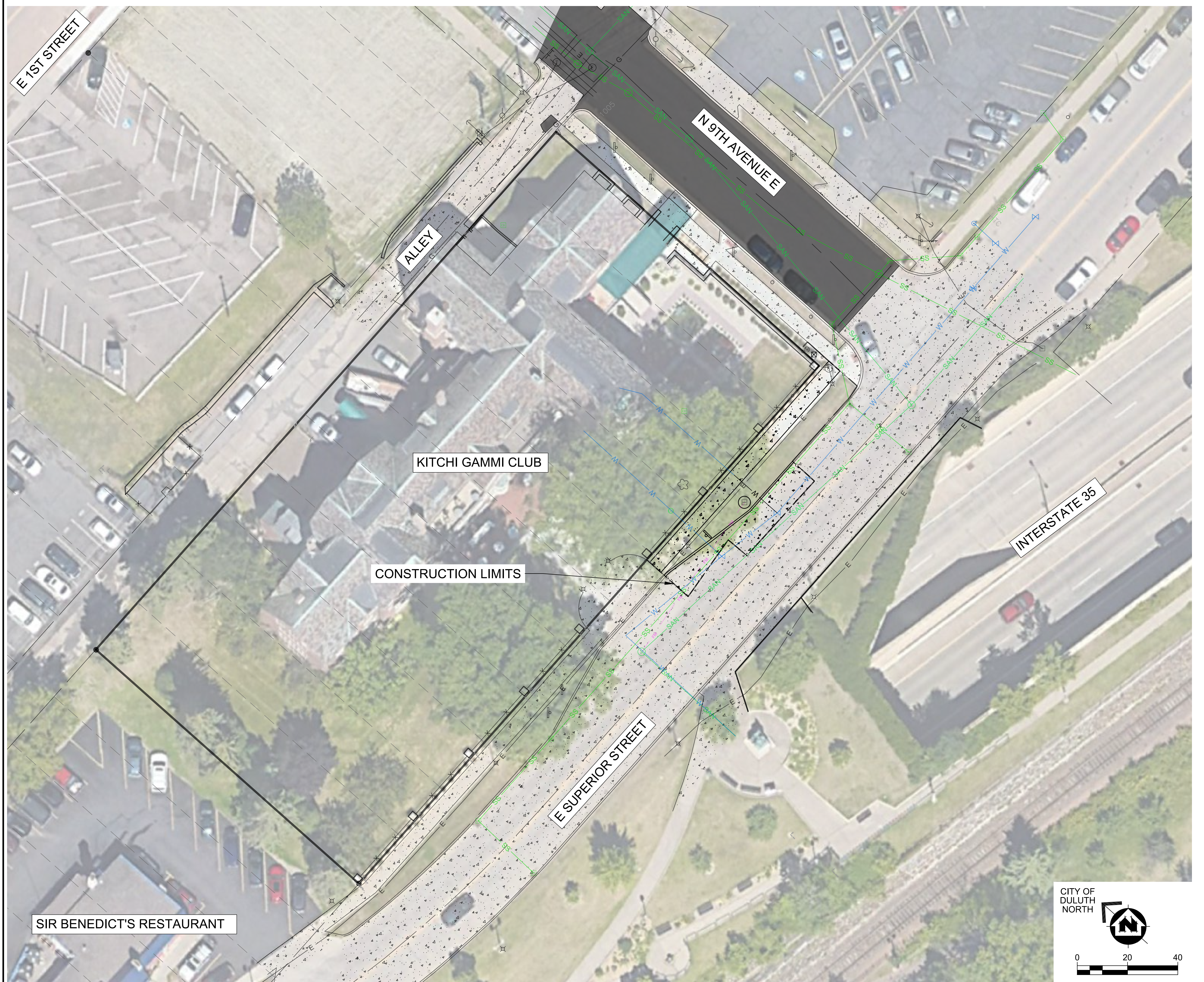
ENGINEER: SCOTT R. CHILSON LICENSE # 44287

MSA ENGINEERING | ARCHITECTURE | SURVEYING
 FUNDING | PLANNING | ENVIRONMENTAL
 332 W Superior Street, Duluth MN 55802
 (218) 722-3915 www.msa-ps.com
 © MSA Professional Services, Inc.

LIFT STATION IMPROVEMENTS
 CITY OF DULUTH, MINNESOTA
 CITY OF DULUTH, ST. LOUIS COUNTY, MN

TITLE SHEET

PROJECT NO. 00616220
 SHEET 00-G-1



LIFT STATION NO. 27 OVERVIEW LAYOUT

PROJECT DATE:	DRAWN BY:	No	DATE	REVISIONS	BY
OCTOBER 2025	ARL	1	12.05.2025	ADDENDUM	JD
	DESIGNED BY: SRC				
	CHECKED BY: SRC				

I HEREBY CERTIFY THAT THIS PLAN, REPORT, OR SPECIFICATION WAS PREPARED BY ME OR UNDER MY DIRECT SUPERVISION AND THAT I AM A DULY LICENSED PROFESSIONAL ENGINEER UNDER THE LAWS OF THE STATE OF MINNESOTA. DATE: December 5, 2025
 ENGINEER: SCOTT R. CHILSON LICENSE #: 44297



ENGINEERING | ARCHITECTURE | SURVEYING
 FUNDING | PLANNING | ENVIRONMENTAL
 332 W Superior Street, Duluth MN 55802
 (218) 722-3915 www.msa-ps.com
 © MSA Professional Services, Inc.

LIFT STATION IMPROVEMENTS
 CITY OF DULUTH, MINNESOTA
 CITY OF DULUTH, ST. LOUIS COUNTY, MN

LIFT STATION 27 EXISTING CONDITIONS

PROJECT NO.
 00616220
 SHEET
 27-C-1R

PLOT DATE: 12/05/2025 10:41 AM C:\00616220\2025\2025\Drawings\27-C-1R.dwg

EROSION CONTROL KEY NOTES

- 1 PROPOSED PERIMETER CONTROL DEVICE (BIOROLLS).
- 2 PROPOSED INLET PROTECTION DEVICE.
- 3 REMOVE AND REPLACE LANDSCAPING. PROTECT BUSHES AND SHRUBS.
- 4 INSTALL MINIMUM 4" TOPSOIL. DISTURBED GROUND SHALL BE SODDED.

REMOVAL KEY NOTES

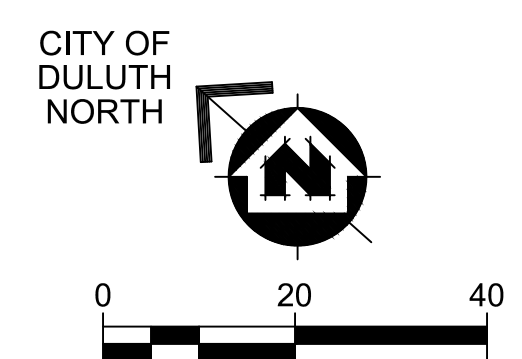
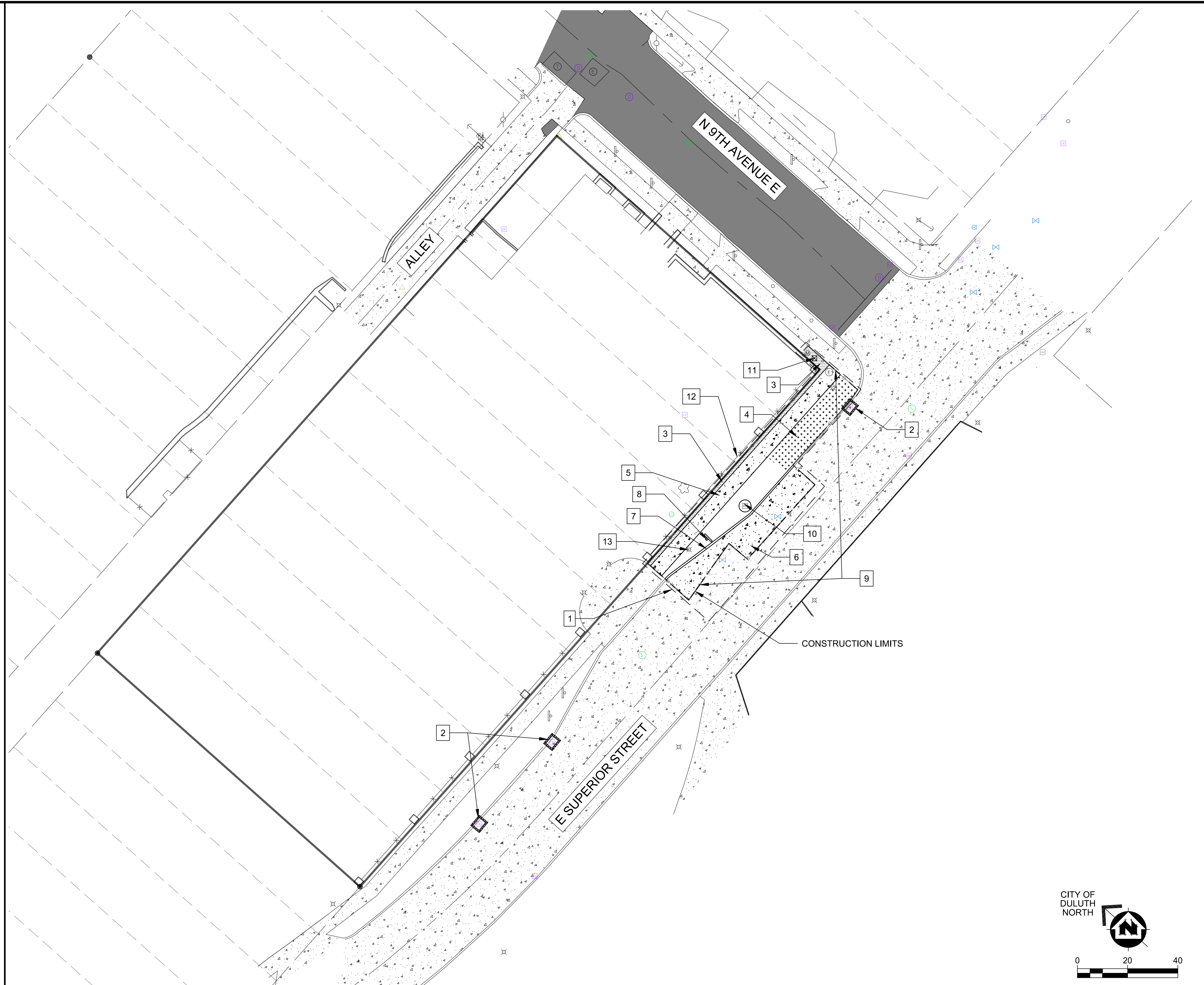
- 5 REMOVE CONCRETE SIDEWALK.
- 6 REMOVE CONCRETE PAVEMENT.
- 7 REMOVE CONCRETE CURB AND GUTTER.
- 8 SALVAGE SIGN.
- 9 SAWCUT PAVEMENT. SAWCUT AT NEAREST JOINT WHENEVER POSSIBLE. SAWCUTS AND FINAL CONSTRUCTION LIMITS SHALL BE APPROVED BY THE ENGINEER.
- 10 PROTECT EXISTING LIFT STATION STRUCTURE. REMOVE INTERNAL COMPONENTS OF LIFT STATION WET WELL PER MECHANICAL PLANS.
- 11 EXISTING ELECTRICAL PANEL. REFER TO DIVISION 26 OF SPECIFICATIONS.
- 12 PROTECT EXISTING FENCE.
- 13 PROTECT EXISTING LIGHT POLE.

ESTIMATED RESTORATION

AREA OF WORK: 2,445 S.F.
 SIDEWALK/PAVEMENT: 1,745 S.F.
 AREA TO BE RESTORED: 700 S.F.

GENERAL NOTES:

1. ALL DISTURBED AREAS, UNLESS OTHERWISE NOTED IN THE DRAWINGS OR SPECIFICATIONS, SHALL BE RESTORED WITH SEED PER MNDOT 3878.
2. CONTRACTOR MAY PROPOSE HYDRAULIC EROSION CONTROL PRODUCT AS AN ALTERNATE AT NO ADDITIONAL COST TO THE OWNER.
3. CONTRACTOR SHALL INSPECT THE WORK AREA AND ADJACENT STREETS FOR SEDIMENT TRACKING. SEDIMENT TRACKED ONTO PAVED SURFACES SHALL BE SWEEPED WITHIN 24 HOURS.
4. ANY AND ALL AREAS OUTSIDE OF THE CONSTRUCTION LIMITS THAT HAVE BEEN DISTURBED DUE TO CONSTRUCTION, SHALL BE RESTORED TO IT'S ORIGINAL CONDITION.
5. IF UTILITY RELOCATION IS NECESSARY, THE CONTRACTOR SHALL COORDINATE CONSTRUCTION ACTIVITIES WITH THE APPROPRIATE UTILITY COMPANIES.
6. CONTRACTOR SHALL VERIFY ALL EXISTING UTILITIES AND CALL GOPHER STATE ONE CALL 48 HOURS PRIOR TO CONSTRUCTION WORK. EXISTING UTILITIES SHOWN ON THESE PLANS ARE APPROXIMATE AND MAY NOT BE RELIED UPON AS EXACT OR COMPLETE.



LIFT STATION NO. 27 EROSION CONTROL PLAN

PROJECT DATE: OCTOBER 2025	DRAWN BY: ARL	No	DATE	REVISIONS	BY
	DESIGNED BY: SRC	1	12.05.2025	ADDENDUM	JD
	CHECKED BY: SRC				

I HEREBY CERTIFY THAT THIS PLAN, REPORT, OR SPECIFICATION WAS PREPARED BY ME OR UNDER MY DIRECT SUPERVISION AND THAT I AM A DULY LICENSED PROFESSIONAL ENGINEER UNDER THE LAWS OF THE STATE OF MINNESOTA. DATE: December 5, 2025
 ENGINEER: SCOTT R. CHILSON LICENSE #: 44297



ENGINEERING | ARCHITECTURE | SURVEYING
 FUNDING | PLANNING | ENVIRONMENTAL
 332 W Superior Street, Duluth MN 55802
 (218) 722-3915 www.msa-ps.com
 © MSA Professional Services, Inc.

LIFT STATION IMPROVEMENTS
 CITY OF DULUTH, MINNESOTA
 CITY OF DULUTH, ST. LOUIS COUNTY, MN

LIFT STATION 27 REMOVALS & EROSION CONTROL PLAN

PROJECT NO.
00616220
 SHEET
27-C-2R

