





**Purchasing Division**  
*Finance Department*  
Room 120  
411 West First Street  
Duluth, Minnesota 55802

 218-730-5340  
 [purchasing@duluthmn.gov](mailto:purchasing@duluthmn.gov)

**Addendum # 2**  
**Solicitation # 26-99126**  
**Project 2325**  
**Lead Service Line Replacement – East Hillside 1**

**NOTICE**

This Addendum is issued to modify, explain or correct the original drawings, specifications and/or previous addenda and is hereby made a part of the Contract Documents.

**CLARIFICATION**

- Some site plan pages (“S” series pages) along E 4<sup>th</sup> St reference pay item “REMOVE AND REPLACE STREET TYPE H” rather than the correct pay item name is “REMOVE AND REPLACE STREET TYPE SPECIAL 4<sup>TH</sup> ST”. Chart A is missing the individual site-specific quantities for this item. The SEQ and Schedule of Bid Prices have this item correctly named and represent the correct estimated quantity.
- For access to the SEQ Excel file and the KMZ file please reach out to Jon Maruska at [jmaruska@duluthmn.gov](mailto:jmaruska@duluthmn.gov).

**CHANGES TO CONTRACT DOCUMENTS**

Revised Plan sheets “S299” and “S410” are provided with this addendum.

**CHANGES TO SPECIAL PROVISIONS**

1. The following sentences in **SP-60.2.C.i (2504) (SIZE)” (MATERIAL) SERVICE PIPE (PRIVATE)** are hereby updated as follows:

In instances where this method is used, the SERVICE PIPE (PRIVATE) pay length shall be adjusted to be measured once as the distance from the house to the connection at the water main or to the connection at the sanitary main, whichever is greater. Excavation and removal of streets and walks to facilitate the connection to sanitary main shall be made per the contract pay items corresponding to the service trench pay limits per the standard plan details and the maximum pay length will be increased by the distance between the sanitary service connection point and the water service connection point (curb stop or corporation stop).

## RESPONSES TO BIDDER QUESTIONS

- Question:** If pipe bursting a sanitary service the sewer main and connecting to an existing corporation stop needs to be done and the removals need to be bigger than the pay limits to achieve both will they both be paid for?

**Response:** Yes. See Special Provision update #1 above.
- Question:** Is there a site sheet for site 299 and are the quantities for site 299 correct on sheet C16?

**Response:** The Plan contains two sheets labeled "S298". The later sheet was incorrectly labeled and should be S299. See the revised plan sheet "S299" provided with this addendum. The estimated quantities for Site 299 on sheet C16 are correct.
- Question:** Quantities on sheet C22 do not match with sheet S410. Which one is correct?

**Response:** See the revised plan sheet "S410" provided with this addendum.

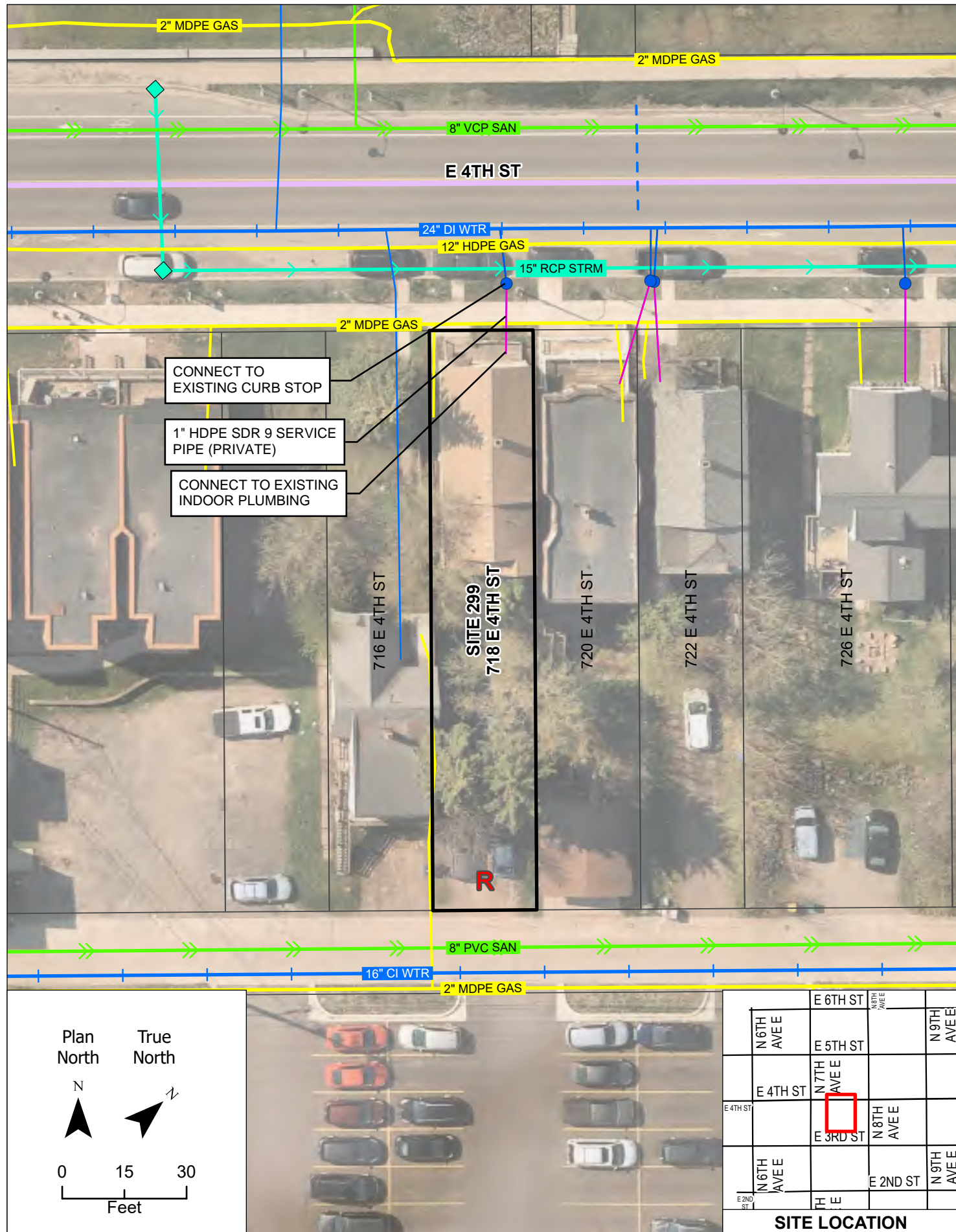
## SUPPLEMENTAL INFORMATION

None.

Please acknowledge receipt of this Addendum by including a copy of it with your proposal.

Posted: **2/3/2026**

**END OF ADDENDUM**



EXTERIOR WORK AREA



INTERIOR WORK AREA



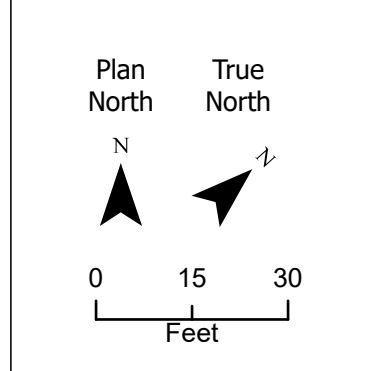
WATER SERVICE PIPE

SITE INFORMATION

TITLE HOLDER	BJERKLIE PROPERTIES LLC
CONSTRUCTION CONTACT	CHRIS DAVILA
RENTAL PROPERTY?	YES
NUMBER OF RESIDENTIAL UNITS	2
PRIVATE SERVICE MATERIAL - CERTAINTY	LEAD - CONFIRMED LEAD BY VISUAL
PUBLIC SERVICE MATERIAL - CERTAINTY	COPPER - CITY CONFIRMED NOT LEAD
WORK AGREEMENT SIGNED	YES
MATERIAL CONFIRMATION NEEDED	NO
WATER METER LOCATION	LOCATED 1.0 FT FROM THE N WALL AND 3.0 FT FROM THE E WALL.
BASEMENT NOTES	UNFINISHED
SANITARY NOTES	NO SANITARY OBSERVED IN CLOSE PROXIMITY TO WATER SERVICE.
GROUND ROD NOTES	GROUND ROD NOT LOCATED. CONTRACTOR TO VERIFY AND PLAN TO INSTALL NEW ELECTRICAL SERVICE GROUND.
GENERAL COMMENTS	

QUANTITIES

SPEC. NO.	DESCRIPTION	UNIT	QTY
2104.603	REMOVE & REPLACE CONCRETE CURB & GUTTER	LIN FT	8
2104.618	REMOVE & REPLACE 6" CONCRETE WALK	SQ FT	75
2504.602	CONNECT TO EXISTING CURB STOP	EACH	1
2504.602	CONNECT TO EXISTING INDOOR PLUMBING	EACH	1
2504.603	1" HDPE SDR 9 SERVICE PIPE (PRIVATE)	LIN FT	18
2545.602	ELECTRICAL SERVICE GROUND	EACH	1
2575.504	SODDING TYPE LAWN (PUBLIC)	SQ YD	6
2104.604	REMOVE & REPLACE STREET SECTION, TYPE H	SQ YD	2



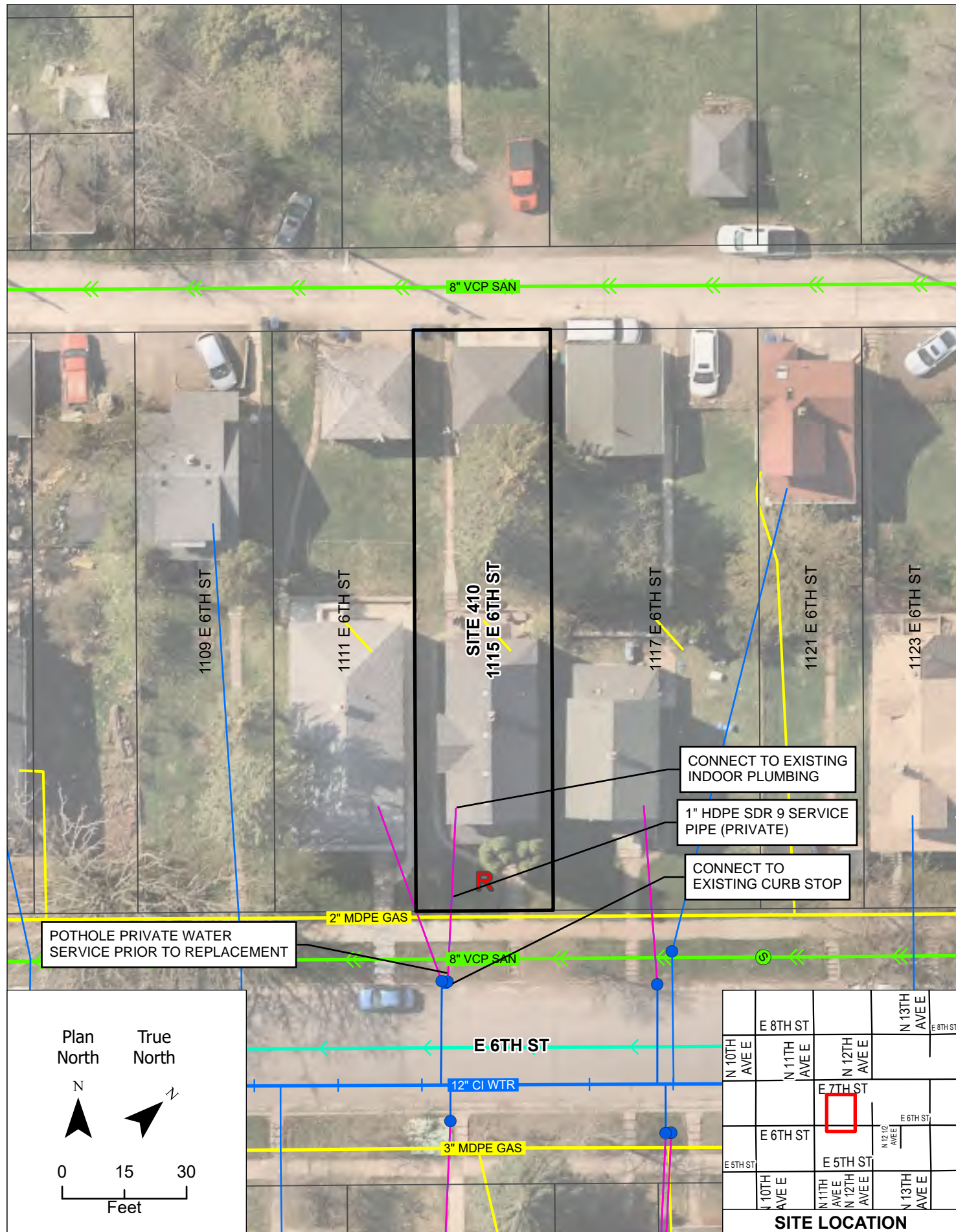
I HEREBY CERTIFY THAT THIS PLAN WAS PREPARED BY ME OR UNDER MY DIRECT SUPERVISION AND THAT I AM A DULY LICENSED PROFESSIONAL ENGINEER UNDER THE LAWS OF THE STATE OF MINNESOTA.  
 \_\_\_\_\_  
 DANIEL HINZMANN  
 TYPE NAME

DATE: 12/09/2025  
 LIC. NO.: 49874

**DULUTH** MINNESOTA  
 CITY OF DULUTH  
 ENGINEERING DIVISION  
 411 W. 1ST ST. STE. 240  
 DULUTH, MN 55802

LEAD SERVICE LINE REPLACEMENT - EAST HILLSIDE 1  
 CITY PROJECT NO.: 2325  
 MN PFA PROJECT NO.: 1690011-31

SITE NO:	299
LOCATION:	718 E 4TH ST
DRAWN BY:	SEH
LEAD REPLACEMENT PLAN	
SHEET NO.	S299 OF S498



EXTERIOR WORK AREA



INTERIOR WORK AREA



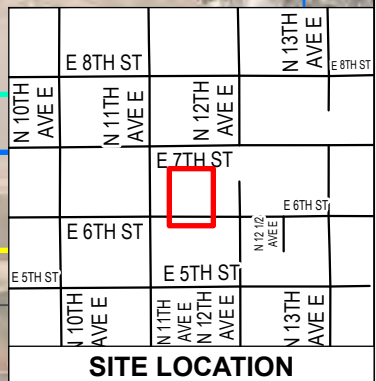
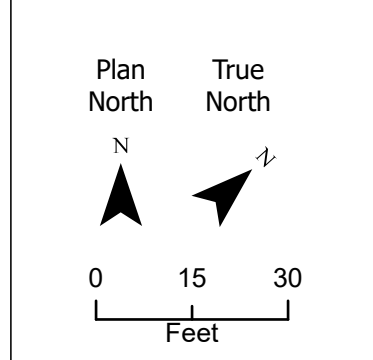
WATER SERVICE PIPE

SITE INFORMATION

TITLE HOLDER	ISAKSON RORY I
CONSTRUCTION CONTACT	
RENTAL PROPERTY?	YES
NUMBER OF RESIDENTIAL UNITS	2
PRIVATE SERVICE MATERIAL - CERTAINTY	COPPER - SUSPECT LEAD
PUBLIC SERVICE MATERIAL - CERTAINTY	COPPER - CITY CONFIRMED NOT LEAD
WORK AGREEMENT SIGNED	YES
MATERIAL CONFIRMATION NEEDED	YES
WATER METER LOCATION	LOCATED 2.0 FT FROM THE S WALL AND 0.0 FT FROM THE W WALL.
BASEMENT NOTES	UNFINISHED
SANITARY NOTES	SEWER LINE APPEARS TO EXIT NEAR WATER SERVICE. LOCATE SEWER LINE.
GROUND ROD NOTES	GROUND ROD NOT LOCATED. CONTRACTOR TO VERIFY AND PLAN TO INSTALL NEW ELECTRICAL SERVICE GROUND.
GENERAL COMMENTS	SAMPLE BOTTLE INDICATED NON-DETECT. POT HOLE SERVICE PIPE FOR MATERIAL IDENTIFICATION. RESTORATION QUANTITIES ARE ON 1111 E 6TH ST.

QUANTITIES

SPEC. NO.	DESCRIPTION	UNIT	QTY
2451.602	POTHOLE WATER SERVICE FOR MATERIAL IDENTIFICATION	EACH	1
2503.602	TELEVISION AND LOCATE SANITARY SERVICE	EACH	1
2504.602	CONNECT TO EXISTING CURB STOP	EACH	1
2504.602	CONNECT TO EXISTING INDOOR PLUMBING	EACH	1
2504.603	1\"/>		



I HEREBY CERTIFY THAT THIS PLAN WAS PREPARED BY ME OR UNDER MY DIRECT SUPERVISION AND THAT I AM A DULY LICENSED PROFESSIONAL ENGINEER UNDER THE LAWS OF THE STATE OF MINNESOTA.  
 DANIEL HINZMANN  
 TYPE NAME

DATE: 12/09/2025  
 LIC. NO.: 49874

CITY OF DULUTH  
 ENGINEERING DIVISION  
 411 W. 1ST ST. STE. 240  
 DULUTH, MN 55802

LEAD SERVICE LINE REPLACEMENT - EAST HILLSIDE 1  
 CITY PROJECT NO.: 2325  
 MN PFA PROJECT NO.: 1690011-31

SITE NO: 410  
 LOCATION: 1115 E 6TH ST  
 DRAWN BY: SEH  
 LEAD REPLACEMENT PLAN  
 SHEET NO. S410 OF S498