

FY2026 Community Development Program

Technical Assistance Session and Q&A for the
2025 Contracts and the 2026 Applications
August 20, 2025

Welcome!

- Introductions
- HUD basics
- 2026 grant application
- 2025 contract review
- Quarterly/monthly reports
- Payment requests
- Q & A – please save questions for breaks or ask them in the chat.



**Thank you for
your work and
providing
assistance to
people who
need it**



Executive Orders

Directions have been provided to the Secretary of
Housing and Urban Development



Community Development Programs



- ❖ Community Development Block Grant (CDBG)
- ❖ HOME Investment Partnership Program (HOME)
- ❖ Emergency Solutions Grant Program (ESG)

National Objectives

- The three national objectives are:
1. Benefit to low- and moderate-income (LMI) persons
 2. Aid in the prevention or elimination of slums or blight;
 3. Meet a need having a particular urgency

2025 City of Duluth HUD Income Guidelines

2025 CITY OF DULUTH HUD INCOME GUIDELINES

ANNUAL INCOME

FAMILY SIZE	EXTREMELY LOW- INCOME <i>(30% of the Median)</i>	VERY LOW-INCOME <i>(50% of the Median)</i>	LOW INCOME <i>(80% of the Median)</i>
1	\$21,150	\$35,250	\$56,350
2	\$24,200	\$40,250	\$64,400
3	\$27,200	\$45,300	\$72,450
4	\$30,200	\$50,300	\$80,500
5	\$32,650	\$54,350	\$86,950
6	\$35,050	\$58,350	\$93,400
7	\$37,450	\$62,400	\$99,850
8	\$39,900	\$66,400	\$106,300



Timeline and Process

Application Timing:

- **September 4th:**

Applications DUE (at 3pm)

Review Process:

- **Sept/Oct:**
- **November 10th :**
- **November 18th:**
- **December 16th:**

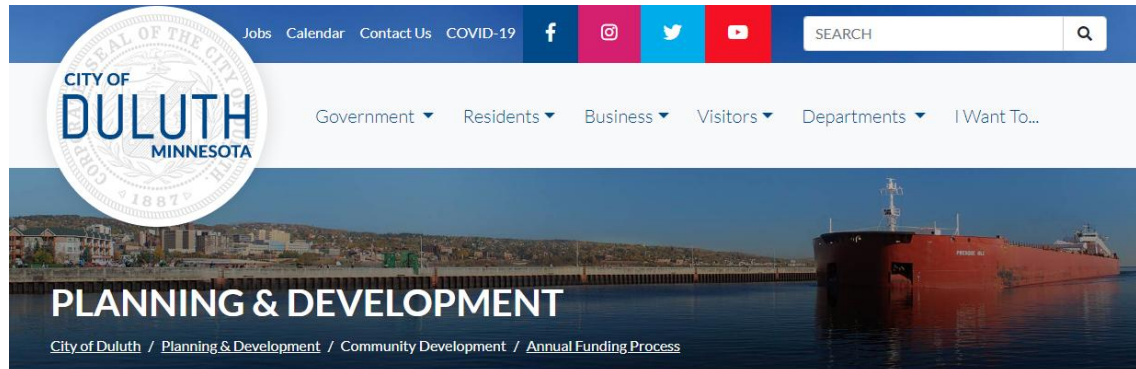
Staff and Community Development
Committee Review

Draft Funding Recommendations

Public Hearing on the Funding
Recommendations

Finalize Recommendations to City
Council

Application Form



Planning & Development
Planning & Development News
Land Use Zoning and Applications
Economic Development
Housing
Community Development
Program Overview

Annual Funding Process

Community Development Program FY25 Application Information

Applications for the 2025 CDBG, HOME and ESG are available on the website on August 7, 2024. Applications are due by 3pm on September 5, 2024. Application materials are available below.

QUESTIONS?

Applicants can contact City Staff at duluthcommdev@DuluthMN.gov or by phone 218-730-5580 between 8:00am and 4:30pm, Monday through Friday. All applicants are encouraged to seek guidance from city staff to review drafts, answer questions, or discuss new ideas. Please make appointments via phone or email prior to August 29, 2022 to ensure staff availability before the application deadline.

CONTACT

City Hall, Room 160
411 West First Street
Duluth, MN 55802
218-730-5580

EMAIL

Office Hours

M-F: 8:30am - 4:00pm

- Fillable PDF available online!
- <https://duluthmn.gov/planning-development/community-development/annual-funding-process/>

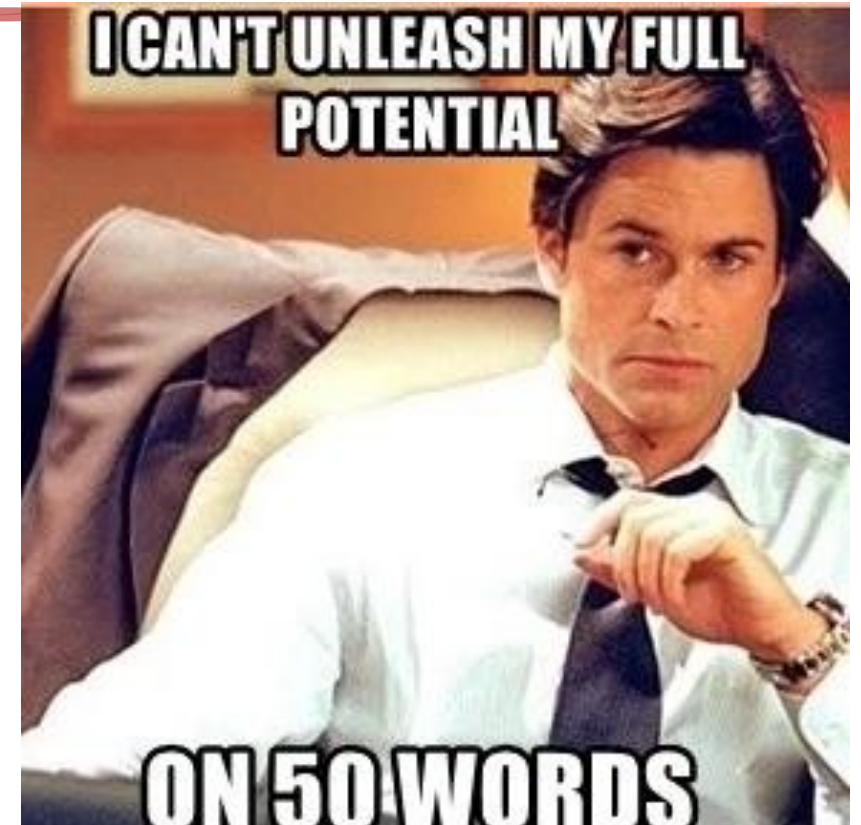


Application Details

1. Eligible Applicants
2. Eligible Activities
3. Funding Types
 - a. CDBG (Housing, Public Services, Public Facilities, Economic Development)
 - b. ESG
 - c. HOME
4. CD Committee Funding Targets

Application components

- Consolidated Plan Priority & Eligibility
 - Summary, Description, Eligible Activity, CD Committee Priorities, Consolidate Plan Goals, Anti-Poverty Strategies
- Project Readiness
- Project Impact & Delivery
 - Expected results, target clientele, outcome measurements
 - Use data and statistics to strengthen your argument
- Budget Narrative
 - Sources, Uses (How many FTE's?)
 - Housing- additional housing budget form
- Note Project Administration – up to 10% for facilities, housing



CD Committee Priorities (1/2)

Childcare and Children's Programming: Given the shortage of childcare facilities and children's programming in Duluth, the CD Committee is continuing to prioritize projects that increase access to these resources. An application in this category might propose solutions to help ensure quality childcare and children's programming is available in LMI neighborhoods that it is safe, affordable and convenient.

Downtown Innovation/Revitalization: Downtown Duluth is a priority area for the city because of the ample opportunities for innovative housing, economic development, transportation, infrastructure, and community building. An application in this category might contribute to the physical, economic or community revitalization in the Downtown area as defined in the map below.



CD Committee Priorities (2/2)

Prepare for the Medicaid work/volunteer requirement: Due to changing eligibility requirements for Medicaid and SNAP in 2026, many recipients of these benefits will be required to log work or volunteer hours every month. A proposal in this category might assist eligible Medicaid/SNAP beneficiaries in maintaining their coverage as the changes in eligibility requirements are rolled out in late 2026/early 2027

New collaborative partnerships and/or co-locating: The community needs assessment has identified transportation barriers for people receiving services, noting that they often need to travel to different locations to receive assistance. An application in this category may be coordinating with other service providers to bring different services to one location or sharing transportation resources where applicable.

2025-2029 Consolidated Plan Goals(1/2)

Affordable Housing: Increase the number and condition of affordable housing units for low-income people. Project locations should be available throughout the community with convenient access to jobs, amenities, and services.

Basic Needs: Provide services to LMI people that fulfill basic needs including food, health services, childcare, prevent evictions, and address other needs such as tax preparation.

Living Wage Jobs: Create jobs by providing assistance/incentives to businesses to grow and hire LMI people. Provide job training and skill development to assist people who are LMI in accessing living wage jobs. Job training should include collaboration with the CareerForce Center and ensure a focus on needed job sectors. Assist LMI people to grow/start their business and grow their income



2025-2029 Consolidated Plan Goals(2/2)

Homelessness: Provide shelter, services, outreach and rental assistance to people who are homeless or in danger of becoming homeless or would be homeless without supportive services utilizing CDBG and HOME funds. The City's HESG funds will be counted in HMIS, and in a separate report in the CAPER.

Community Development Facilities: Community Development Facilities are buildings or structure or items that meet a priority need, are open to the public and benefit low-income households, example of these facilities include Homeless Facilities, Transportation Facilities, or Recreation Facilities. Address vacant, condemned, blighted and/or deteriorated properties. Provide updated infrastructure, including pedestrian improvements and/or downtown improvements. Improve or provide essential services to LMI HH.



Anti-Poverty Strategies (1/2)

Training and Career Development: Provide occupational training programs coupled with career development and job placement in partnership with the City's Workforce Development Division to enable people to obtain employment.

Remove Issues Obtaining Employment: Assist families with removing issues to obtaining employment through long term or sustainable solutions that reduce the cost of essentials or burdens to household incomes, such as provide more childcare and school age child programming.

Reduce Housing and Utility Costs: Focus on efforts to reduce the costs on household's budgets through energy efficiency programs that lower utilities and/or through rehab programs that extend the livability of housing units.

Increase Affordable Housing Units: Increase the amount of affordable housing units within the City that have long-term affordability restrictions (greater than 30 years) to maintain housing for low-to-moderate-income residents within our community.

Anti-Poverty Strategies (2/2)

Increase Access to Affordable and Healthy Food and Living Options: Increase access to affordable and healthy food options as well as educational and social gathering programs that contribute to healthy living in order to address the long-term health and economic impacts on households experiencing poverty.

Increase Homeownership: Increase opportunities for LMI households to be able to purchase housing that will allow them to become financially sustainable.

Create Sustainable Independence: When possible, work with LMI people to help them develop skills such as through the Section 3 Program or other job training programs AND provide quality housing opportunities. This could be a multi-agency partnership.

Project Impact and Delivery

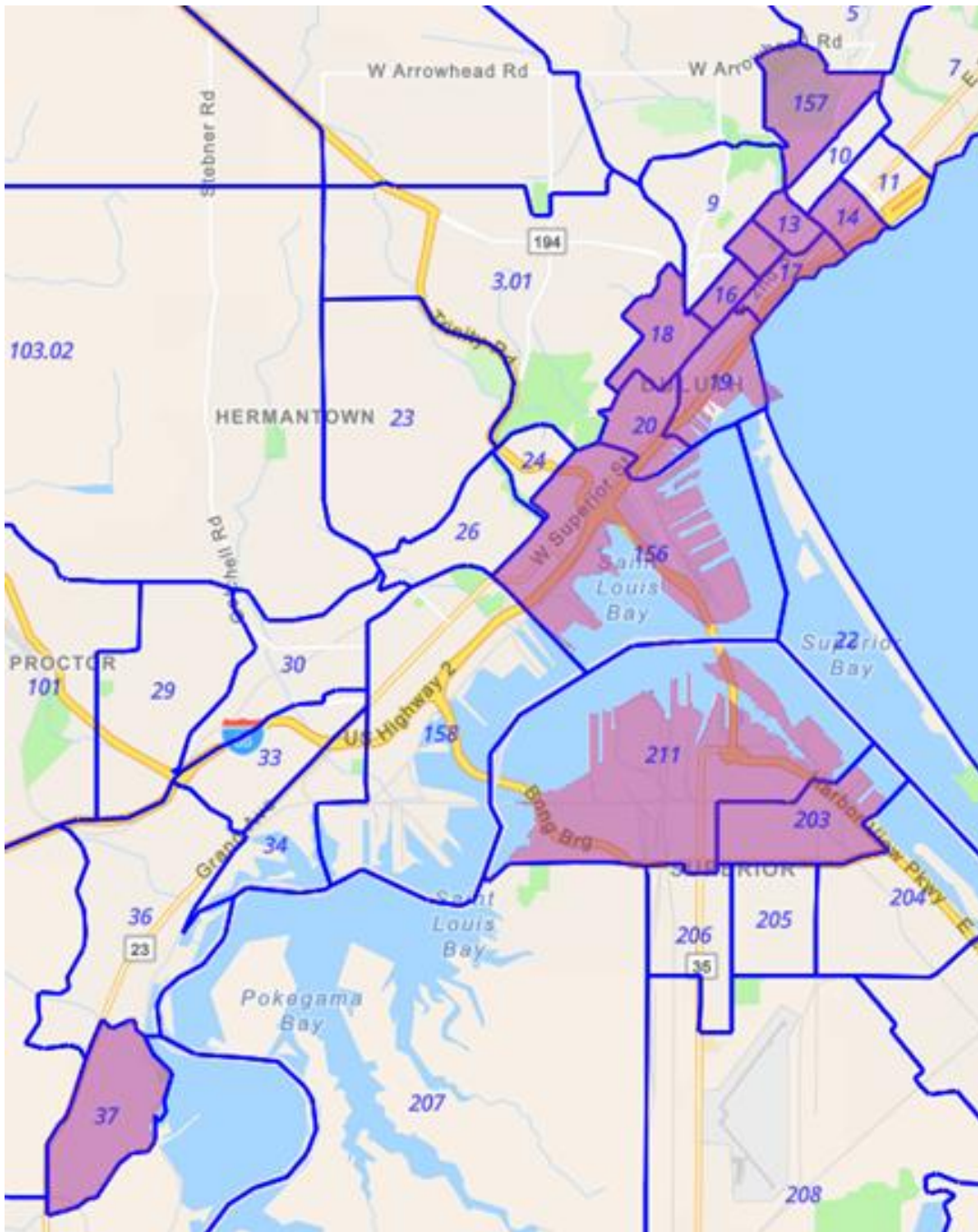
- **Be Specific and Clear**
 - What will the funds will be spent on? Provide a detailed budget with line items.
 - What is the goal? Provide measurable, verifiable outcomes.
 - What is the implementation plan and timeline? Provide details and evidence of how your organization will be able to implement the program.
 - How has your organization performed in the past? Provide measurable outcomes that were accomplished and lessons learned.

You after spending
hours writing a
grant proposal



Grant reviewer
only skims the
first page.





Qualified Census Tracts

Budget Narrative

[illegible]

Economic/Workforce Development Projects

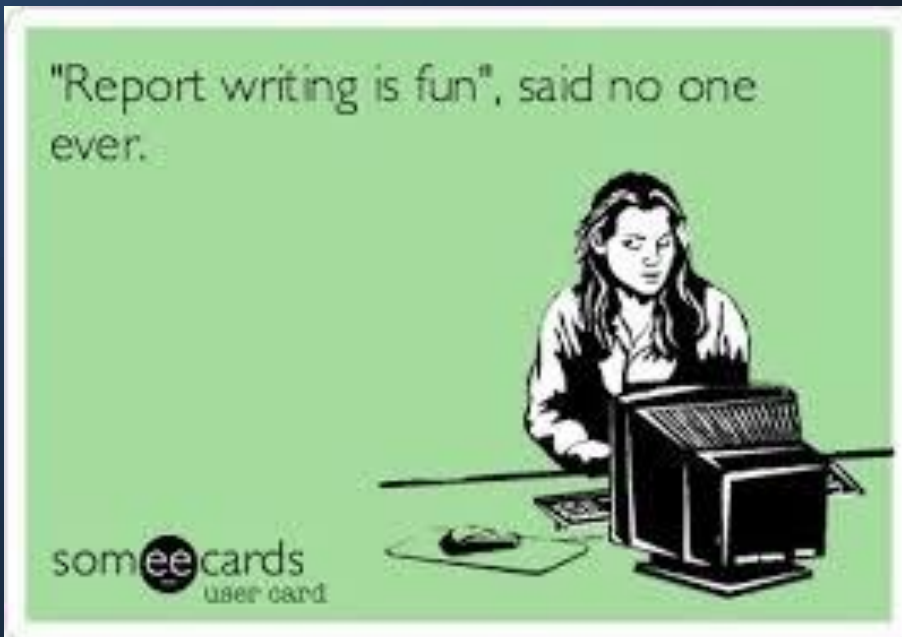
Purpose: Support LMI beneficiaries in earning higher incomes in jobs with opportunities for growth and advancement.

Duluth Workforce Development Board established two primary goals for all workforce development projects:

1. Increase incomes to a living wage
2. Create jobs with career pathways

- Participant focus: 100% LMI participants, outreach
- Participant tracking: 12 months engagement, assistance, and reporting
- Eligibility and cost reimbursement: CBDO certification, quarterly reimbursement

<https://duluthmn.gov/media/10362/fy-2021-cdbg-and-job-training-final.pdf>



COLLABORATIVE PARTNERSHIP AND CO-LOCATION OF SERVICES DULUTH WORKFORCE DEVELOPMENT/CareerForce

Duluth Workforce Development is increasing efforts to work with local agencies on collaborative partnership, co-location of services, or workforce pipeline development.

Elena Foshay (*she/her*)

Director of Workforce Development

City of Duluth

402 West First Street, Duluth, MN 55802

Desk: 218-730-5241 Cell: 218-590-8277

CareerForceMN.com | [Facebook](https://www.facebook.com/careerforcemn)

Workforce Central Inbox:

CommunityBenefits@duluthmn.gov



Section 3 Requirement

Of the Housing and Urban Development Act of 1968, as amended

Purpose:

“To the greatest extent feasible, employment and other economic opportunities generated by HUD funds be directed to low and very low income residents”.

- **For all projects that involve:**

- Housing rehabilitation,
- Housing construction, OR
- Public facility projects, AND
- The total amount of assistance exceeds \$200,000, provide a statement on how the project will utilize businesses and/or people who qualify as Section 3.

In your application: describe plans for how you will engage individuals who meet the Section 3 definition

<https://duluthmn.gov/planning-development/community-development/annual-funding-process/>



Construction Projects



Davis-Bacon Act and City Prevailing Wage

- Contractors are required to pay all laborers prevailing wages.
- Applicable to all construction and rehab projects that cost \$2,000 or greater.
<https://duluthmn.gov/engineering/resources/contractor-resources/prevailing-wage/>



Project Labor Agreements

- The “PLA”, has been shown to promote cost-efficient, professional and safe construction or development projects.
- Applicable to projects that are owned, funded, or financed by the City at a threshold of \$150,000.
- All relevant bid documents must include the requirement to follow the PLA.
- Purpose: a project-wide organizational plan, that all parties agree to.



Community Benefits Provision



- Must be included in your PLA
 - Contractors and Unions must make good faith efforts to involve socially disadvantaged persons, as defined in 13 CFR 124.103, in construction of the project.
 - Purpose: support the development of life-long careers and local workforce.
- ➡
- Connect early to discuss with Workforce Development - create Best Efforts Plan.

CommunityBenefits@DuluthMN.gov

Infrastructure Projects

construction, alteration,
maintenance, and repair



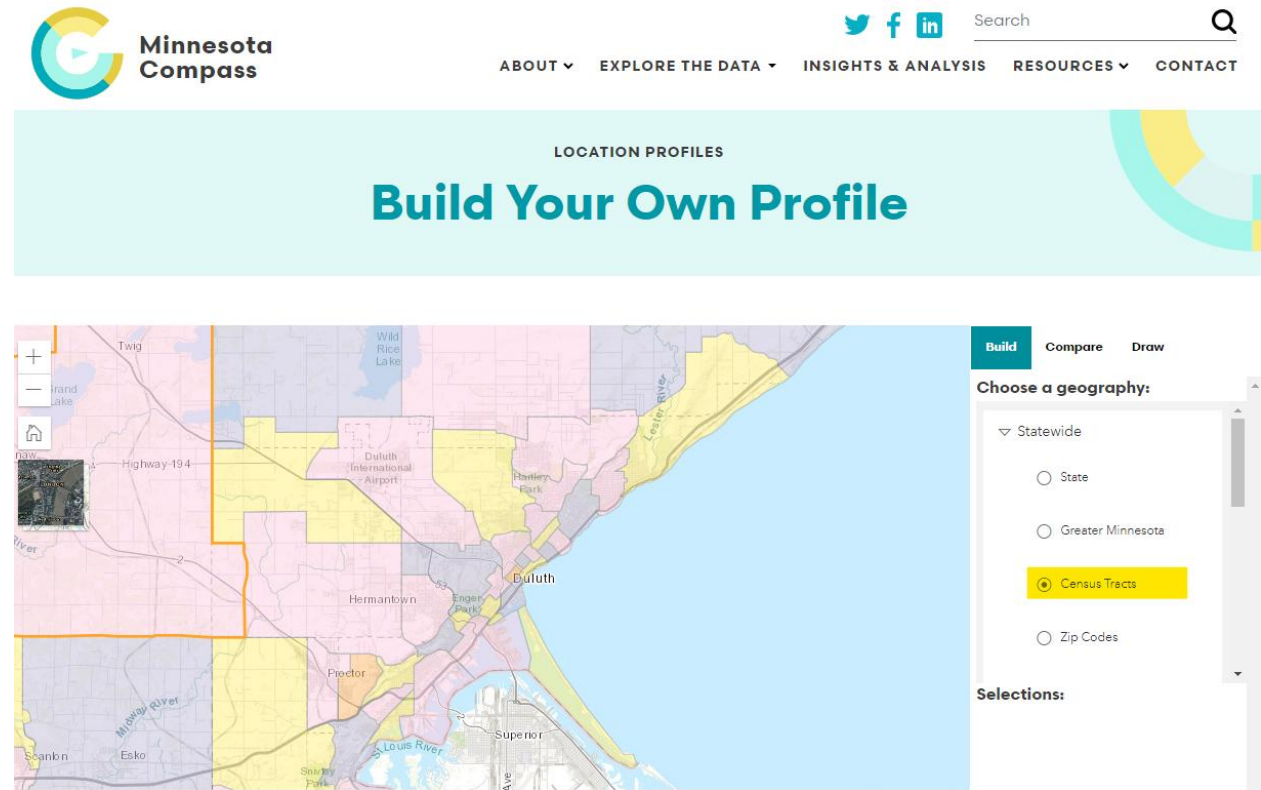
Build America, Buy America (BABA) → Buy America Preference (BAP)

- “All iron, steel, manufactured products, and construction materials” used in an infrastructure project must be produced in the US.
- Check if one of the five “General Waivers” may apply
- 2026 Application: describe how you will comply with the BABA
- 2025 = Phased implementation is complete, all projects going forward are subject to all materials categories of the BABA

<https://duluthmn.gov/planning-development/community-development/resources-for-subrecipients/>

Final Tips & Questions about the Application Process

- Be concise and direct
- Connect with us- email, phone, Teams, you name it
- Send a draft for review
- Use MN Compass or other reputable data sources
<https://www.mncompass.org/profiles/custom>
- QUESTIONS?



Where is my contract?



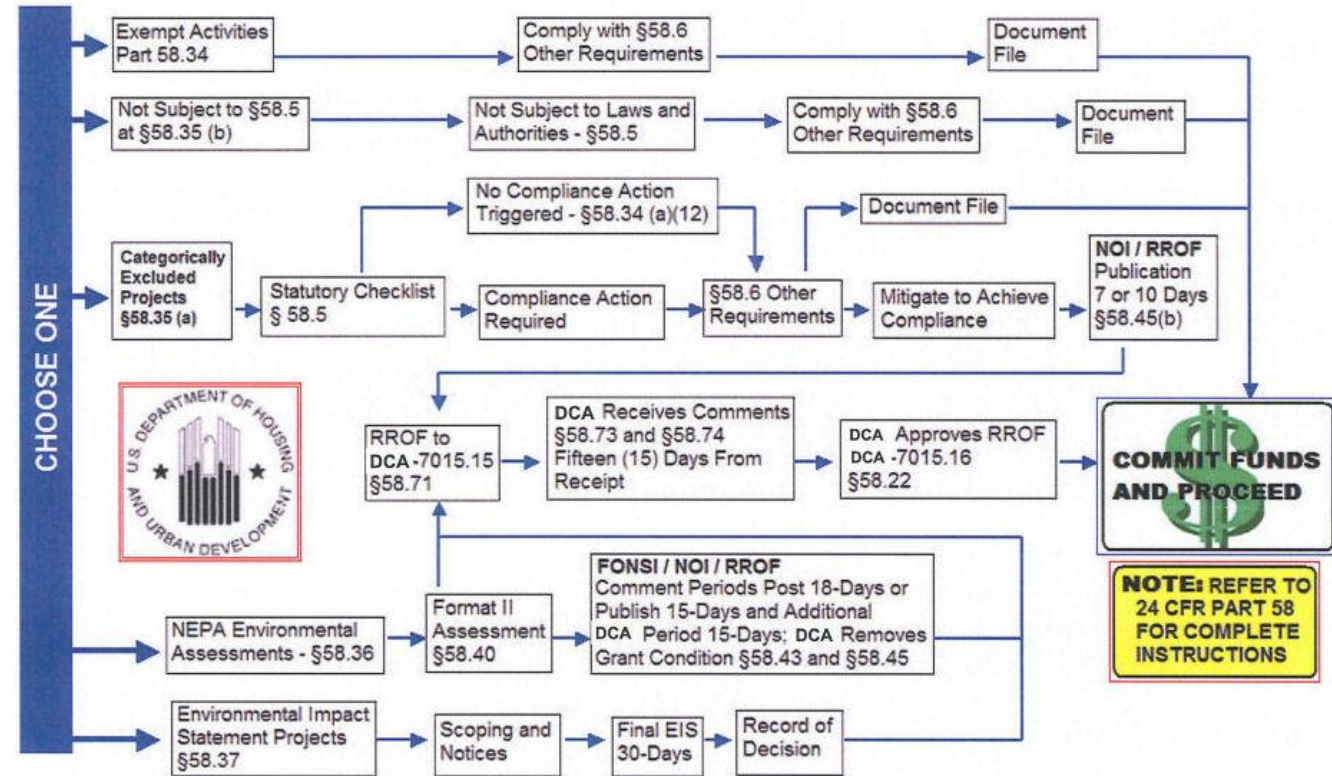
Contract Review

- Pre-award Documentation
- Read!
- Return
- Docu-sign



Environmental Clearance

- Services
- Housing Rehab
- Public Facilities
- New Construction
- **You can't do ANYTHING until you have environmental clearance!**



Templates Online

<https://duluthmn.gov/planning-development/community-development/funding/resources-for-subrecipients/>

Community Development Funding Menu

DOCUMENTATION:

- Payment Request forms
- Quarterly Reports

EVERYTHING NEEDS TO BE CLEARLY DOCUMENTED



Quarterly Reporting

- Dates: July 15, Oct 15, Jan 15, Apr 15
 - December Timeliness
- Submit To: Duluthcommdev@duluthmn.Gov

Quarterly Reporting

CDBG Demographic Quarterly Reporting Sheet				City of Duluth Community Planning Division						
Subrecipient Name:		Phone :		CDBG # :		Date Submitted:				
Contact Person:		Fax:		Contract # :		*If final report, check here:				
Contract Amount:		Goal:		IDIS #		*Submit expanded narrative with final report.				
Contract Year:	2018 (4/1/18 - 3/31/19)									
Persons Served (by Quarter)	APR - JUNE		JULY - SEPT		OCT - DEC		JAN - MAR		CONTRACT TOTAL	
	Persons Served	Hispanic Ethnicity*	Persons Served	Hispanic Ethnicity*	Persons Served	Hispanic Ethnicity*	Persons Served	Hispanic Ethnicity*	Persons Served	Hispanic Ethnicity
1. Number of New Persons Served during Quarter (persons not served in previous contract years)									0	
2. Number of Persons Receiving Continual Service (persons served in previous contract years)									0	
3. Total Unduplicated Persons Served in Quarter	0		0		0		0		0	
Persons Served by Race	0	0	0	0	0	0	0	0	0	0
4. White									0	0
5. Black/African American									0	0
6. Asian									0	0
7. American Indian/Alaska Native									0	0
8. Native Hawaiian/Pacific Islander									0	0
9. American Indian/Alaska Native & White									0	0
10. Asian & White									0	0
11. Black/African American & White									0	0
12. American Indian/Alaska Native & Black									0	0
13. Other Multi-Racial (not identified above)									0	0

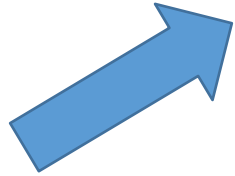
**Race must be identified for all Hispanic persons. Persons of Hispanic Ethnicity are a sub-set of Persons Served and should be counted in Persons Served column, as well.*

Racial
Demographic
Numbers



Quarterly Reporting

Persons Served
Numbers MUST
match **Racial
Demographic
Total**



Persons Served by Income	0		0		0		0		0	
14. Very Low Income (0% to 30%)									0	
15. Low Income (31% to 50%)									0	
16. Low-Moderate Income (51% to 80%)									0	
17. Non Low-Moderate Income (over 80%)									0	
Performance Measurements										
22. Number of reasonable accommodation reque										
2017 Leveraged Funds (Other Sources) <i>(Identify leverage funding sources below)</i>	April - June 2017	July - Sept. 2017	Oct. - Dec. 2017	Jan. - March 2018	Total Leverage					
Other Federal					\$0					
State/Local					\$0					
Private					\$0					
Other:					\$0					
Other:					\$0					
Total	\$0	\$0	\$0	\$0	\$0					
ACCOMPLISHMENTS NARRATIVE: Please submit a brief paragraph on project accomplishments during the quarter :										
<div> Template Narrative Reas Accom + </div>										

Quarterly Reporting

Persons Served by Income	0		0		0		0		0	
14. Very Low Income (0% to 30%)									0	
15. Low Income (31% to 50%)									0	
16. Low-Moderate Income (51% to 80%)									0	
17. Non Low-Moderate Income (over 80%)									0	
Performance Measurements										
22. Number of reasonable accommodation reque										
2017 Leveraged Funds (Other Sources) (Identify leverage funding sources below)	April - June 2017	July - Sept. 2017	Oct. - Dec. 2017	Jan. - March 2018	Total Leverage					
Other Federal					\$0					
State/Local					\$0					
Private					\$0					
Other:					\$0					
Other:					\$0					
Total	\$0	\$0	\$0	\$0	\$0					
ACCOMPLISHMENTS NARRATIVE: Please submit a brief paragraph on project accomplishments during the quarter :										
<div> Template Narrative Reas Accom + </div>										

Quarterly Reporting



CITY OF DULUTH
DEPARTMENT OF PLANNING & DEVELOPMENT
Community Development Division
332 City Hall • Duluth, Minnesota 55802-1197

Subrecipient Name:
Contact Person:
Contract Number:
Date Submitted:

DIRECTIONS:

Please keep a running log of all requests for reasonable accommodations.
This must be submitted quarterly.

FY 2018 SECTION 504 LOG and LIMITED ENGLISH PROFICIENCY LOG

Section 504 Log - Requests for Reasonable Accommodations

Date of Request	Action Being Requested	Type of Accommodation Requested (physical, sensory or programmatic)	Type of Disability (physical, sensory, mental)	Dates documentation Received	What Action Completed	Date Completed

Section 504 Tip Sheet

Section 504 of the Rehabilitation Act of 1973 prohibits discrimination against persons with disabilities to participate fully in your program.

The Americans with Disabilities Act of 1990 (ADA) governs access to public programs, government services, and telecommunications. Unlike Section 504, the ADA does not require Federal financial assistance is given.

Definitions:

Person with a Disability: an individual with a disability who:

1. has a physical or mental impairment that substantially limits one or more major life activities;
2. has a record of such an impairment; or
3. is regarded as having such an impairment.

A **physical impairment** is defined by the ADA as:

"Any physiological disorder or condition, cosmetic disfigurement, or anatomical loss affecting one or more of the following: the operation of a part or parts of the body, or the function of a part or parts of the body, or the function of the body as a whole, or the operation of a part or parts of the body, or the function of a part or parts of the body, or the function of the body as a whole."

A **mental impairment** is defined by the ADA as:

"[a]ny mental or psychological disorder, such as mental illness, personality disorder, or emotional disturbance, that substantially limits one or more major life activities. An **impairment** under the ADA is a physiological or psychological condition that is not within the normal range, are not impairments. A physical condition that substantially limits one or more major life activities is a physical impairment. Similarly, personality traits such as poor judgment, or disadvantages, such as lack of education or a prison record, are not impairments. Examples: http://www.adata.org/whatsada-defini

Limited English Proficiency Services

Date of Service	Service Needed	Accommodation Provided (speak card, interpreter, etc.)	Native Language	Services Needed	Plan for Continued Service	



Monitoring

During your contract period, there will be a monitoring. This could be an onsite visit. The purpose of this is to work with the agencies to see if their files are accurate to HUD requirements. It is not a scary thing, the city is here to help!

Photo Guidelines for Quarterlies



To accurately represent the impact of federally funded programs, the City of Duluth is asking agencies to submit photos along with quarterly reports. These photos will help document the progress and community benefit of activities funded under CDBG, HOME and ESG.

Payment Requests

Agency Letterhead

Date

Manager
Planning & Development Division
411 W 1st St
City Hall, Room 160
Duluth, MN 55802

Program: 2025 (CDBG/HOME/ESG)

Project Name: xxxxxxxx

Contract#: 00000
Contract Term: 4/1/25 – 3/31/26
CD Project#: 25-xx-00
Agency Invoice #: xxxxxx

This is a request for reimbursement of costs totaling \$00,000.00 for the period of Month Day, Year to Month Day, Year.

	Budget	Previous Request	Current Request	Requests to Date	Balance
Contract line item 1			\$		
Contract line item 2			\$		
Contract line item 3			\$		
Contract line item 4			\$		
TOTAL	\$	\$	\$	\$	\$

Total Requested: \$00,000.00

I certify that these costs have been incurred. Backup and documentation are enclosed.

Sincerely,

Name

Title



<https://duluthmn.gov/planning-development/community-development/resources-for-subrecipients/>



Payment Requests

Payment Request Summary (Page 2)

Project Name:

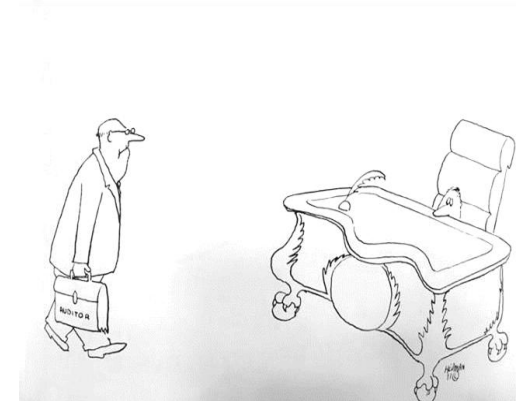
Contact:

Contract #:

				CDBG Amount	Other Amount	Total Amount	% CDBG	Timesheet Enclosed	Payroll Register Highlighted
Position		Date Incurred							
Salaries	Program Director	Employee Name 1	April 1-16, 2016	\$ -	\$ -	\$ -	%	yes	yes
		Employee Name 1	April 17-30, 2016	\$ -	\$ -	\$ -	%	yes	yes
Benefits		Employee Name 1	April 1-16, 2016	\$ -	\$ -	\$ -	%	yes	yes
		Employee Name 1	April 17-30, 2016	\$ -	\$ -	\$ -	%	yes	yes
SUBTOTAL				\$ -	\$ -	\$ -			
Salaries	Asst Coord	Employee Name 2	April 1-16, 2016	\$ -	\$ -	\$ -	%	yes	yes
		Employee Name 2	April 17-30, 2016	\$ -	\$ -	\$ -	%	yes	yes
Benefits		Employee Name 2	April 1-16, 2016	\$ -	\$ -	\$ -	%	yes	yes
		Employee Name 2	April 17-30, 2016	\$ -	\$ -	\$ -	%	yes	yes
SUBTOTAL				\$ -	\$ -	\$ -			
TOTAL				\$ -	\$ -	\$ -			

Payment Requests

- Required Documentation
 - Time Sheets/Payroll
 - Electronic Payroll — Two Signatures!!
 - Invoices



Electronic Payroll

All timesheets need to have the employee and supervisor signatures approving the time!

***For agencies that have submitted electronic payrolls for more than 2 years, Holly Anderson (our Financial Analyst) may allow acceptance of electronic timesheets without the signatures if she can review your system and it meets the requirements. (Contact her if interested)*

Holly Anderson

Financial Analyst, City of Duluth
120 City Hall, 411 West First Street
Duluth, MN 55802
Direct line: (218) 730-5043
Email haanderson@duluthmn.gov



Common Errors

- Previous balance is incorrect. The invoice will be sent back if the coversheet doesn't match our system.
- Watch dates for beginning of program year (i.e. power bills – can not bill for anything before April 1st. If billing includes some days in March – it needs to be adjusted.)
- Wrong program year on invoice.
- Insufficient back up information (i.e. doesn't show an item has been paid)
- Invoices or support material are not submitted in one package, (i.e. it is sent in pieces – this is no longer accepted)
- Deductions will be given to applicants that have had repeated issues with invoices



CAPER/Performance Report

Program Review for FY 2023							
	Agency	Contract Amount	Goal Type	Goal	Accomplished	% of Goal	Notes
Affordable Housing- On Site	Duluth Property Rehab - HRA	\$ 405,000.00	units	50	50	100%	due to number of units and length of rehab work, typically has a lag.
	CLT Acq Rehab - One Roof Community Housing	\$ 361,000.00	units	6	6	100%	
	One Roof Duluth Rehabilitation - One Roof Community Housing	\$ 67,925.00	units	15	4	27%	
Economic Development	Futures Program - Life House, Inc.	\$ 95,000.00	people	100	155	155%	in process
	High-Demand, Living-wage Job Training Project - SOAR	\$ 153,000.00	people	90	72	80%	in process
	Growing Neighborhood Businesses - Entrepreneur Fund	\$ 56,000.00	business	8	8	100%	
	Ujamaa-The Cultural District-Family Rise Together	\$ 43,200.00	people	23	11	48%	in process
Public Facilities	Equipment Upgrades to Improve Dental Care- LSCHC	\$ 40,500.00	Facility	2700	NA	0%	contract has not started
	Imaginarium Project- Life House, Inc	\$ 120,070.00	Facility	1	NA	0%	contract has not started
	Annie's House of Refuge and Restoration-Divine Konnections	\$ 104,136.00	Facility	1	1	100%	
Public Services	Free Tax Site - Community Action Duluth	\$ 18,000.00	People	1,200	513	43%	2022 goal 15,000 Accomplish 20,000
	Early Childhood Education - CHUM	\$ 19,000.00	People	70	86	123%	
	Duluth Hunger Project - CHUM	\$ 84,385.00	People	20,000	23,383	117%	
	Tenant Landlord Connection - One Roof	\$ 21,000.00	People	570	687	121%	
	Skilled Trades, Art, Robotics & Technology (START) Program-Family Freedom Center	\$ 47,000.00	People	850	1104	130%	
	Life House Basic Needs/Drop-in for Homeless Youth - Life House	\$ 32,000.00	People	625	655	105%	
	Young Mothers Program-YWCA	\$ 21,000.00	People	25	27	108%	
	Comprehensive Services for Homeless Veterans - MACV	\$ 10,000.00	People	120	107	89%	
	Safe Haven Shelter Program - Safe Haven Shelter for Battered Women	\$ 21,000.00	People	500	660	132%	
	Emergency Shelter - CHUM	\$ 32,000.00	People	1100	1172	107%	
	Family Supportive Housing - Center City Housing Corp	\$ 31,000.00	People	124	111	90%	
	Family Transitional Housing - The Salvation Army	\$ 9,500.00	People	100	54	54%	
	Coordinated Entry & Assessment - HRA	\$ 12,000.00	People	1000	1288	128%	
HOME Program	TBRA - HRA	\$ 55,000.00	People	16	16	100%	contract in process
	Wadena West-Center City	\$ 300,000.00	People	60	NA	NA	
	Community Land Trust: New Construction - One Roof	\$ 227,526.00	Units	5	5	100%	
ESG Program	Comprehensive Services for Homeless Vets - MACV	\$ 8,000.00	People	100	13	13%	
	Safe Haven Shelter Program - Safe Haven Shelter for Battered Women	\$ 18,000.00	People	500	660	132%	
	The Loft Emergency Shelter for Youth - Life House Inc.	\$ 38,426.00	People	20	15	75%	
	Emergency Shelter - CHUM	\$ 21,000.00	People	1100	1772	161%	
	CHUM Street Outreach - CHUM	\$ 15,000.00	People	200	200	100%	
	Family Supportive Housing - CCHC	\$ 24,000.00	People	91	77	85%	
	Family Transitional Housing - The Salvation Army	\$ 9,500.00	People	100	54	54%	
	Annie's House of Refuge & Restoration- Divine Konnections, Inc	\$ 20,000.00	People	18	19	106%	
	Rapid Rehousing & Homelessness Prevention - HRA	\$ 63,075.00	People	30	28	93%	



Duplication of Benefits

- A duplication of benefits occurs when a person, household, business, government, or other entity receives financial assistance from multiple sources for the same purpose, and the total assistance received for that purpose is more than the total need for assistance
- City of Duluth will terminate the contract if it is discovered that this is occurring.
- The City of Duluth will then explore whether funding needs to be returned to the city.

Radon Testing



Questions?

- Application information:

<https://duluthmn.gov/planning-development/community-development-funding/program-overview/>

- Thank you for attending!
- If you have additional questions after this session don't hesitate to reach out to us at duluthcommdev@DuluthMN.gov
 - Jenn Moses- Manager (jmoses@duluthmn.gov)
 - Suzanne Kelley-Senior Planner (skelley@duluthmn.gov)
 - Kathy Wilson – Planner II (kwilson@duluthmn.gov)
 - Phillis Webb- Grants Coordinator (pwebb@duluthmn.gov)
 - Hannah Figgins-Planner I (hfiggins@duluthmn.gov)
 - Samantha Smith-Admin Info Specialist (ssmith@duluthmn.gov)

