



COMMUNITY INPUT SESSION #2
08.18.2025

AGENDA

Today's purpose: Present three preliminary concept plans to revitalize the park space into a vibrant hub for recreation, community activities and enjoying nature, and receive feedback.

- 5:00pm: Welcome & Introductions
 - Project Overview
 - Concepts Overview
 - Looking Ahead and Wrap-up
- 5:30pm – 7:00pm: Open House
 - Opportunity to look closer at preliminary concepts and talk with project team



PROJECT SCHEDULE

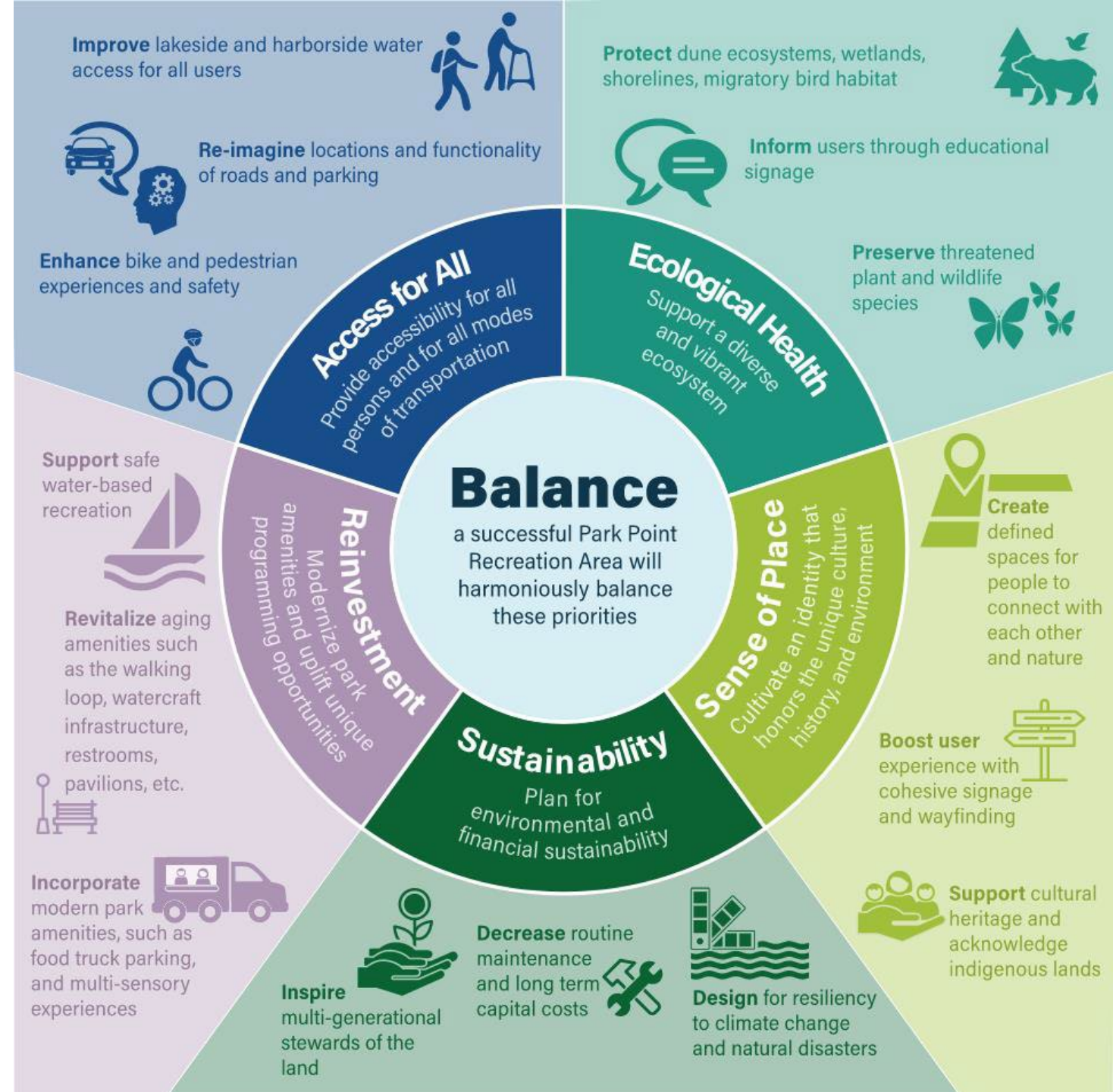
- Phase 1: April - July
 - Data Collection
 - Site Analysis
 - Engagements
- Phase 2: June - September
 - **Concept Designs & Refinements**
 - Engagements
- Phase 3: August – October
 - Final Plan Refinement
 - Planning Report Document
- Parks & Recreation Commission Approvals (October-December)



WHAT WE'VE HEARD SO FAR

Facilitated four focus group workshops, a public open house, online survey, and design charette

- Received input from over 500 people
- Developed and confirmed top five park priorities:
 - Provide Access for All
 - Support Ecological Health
 - Cultivate Sense of Place
 - Plan for Sustainability
 - Reinvest in Park Amenities





Concept 1 | Central Commons



Concept 2 | Harborside Connections



Concept 3 | Linear Flow



ADDRESSING PRIORITIES

Access for All

- More opportunities for harborside water access; trails and beach encouragement areas
- Improved trails through dunes
- Continuous bike lane along road, extending conditions currently on the Point

Ecological Health

- Provides viewing platform and trails through naturalized areas
- Creation of living shoreline
- Social trail management through dunes (reduced)

Sense of Place

- Provides delineated spaces for gatherings of different sizes
- Opportunities for wayfinding, education and interpretation

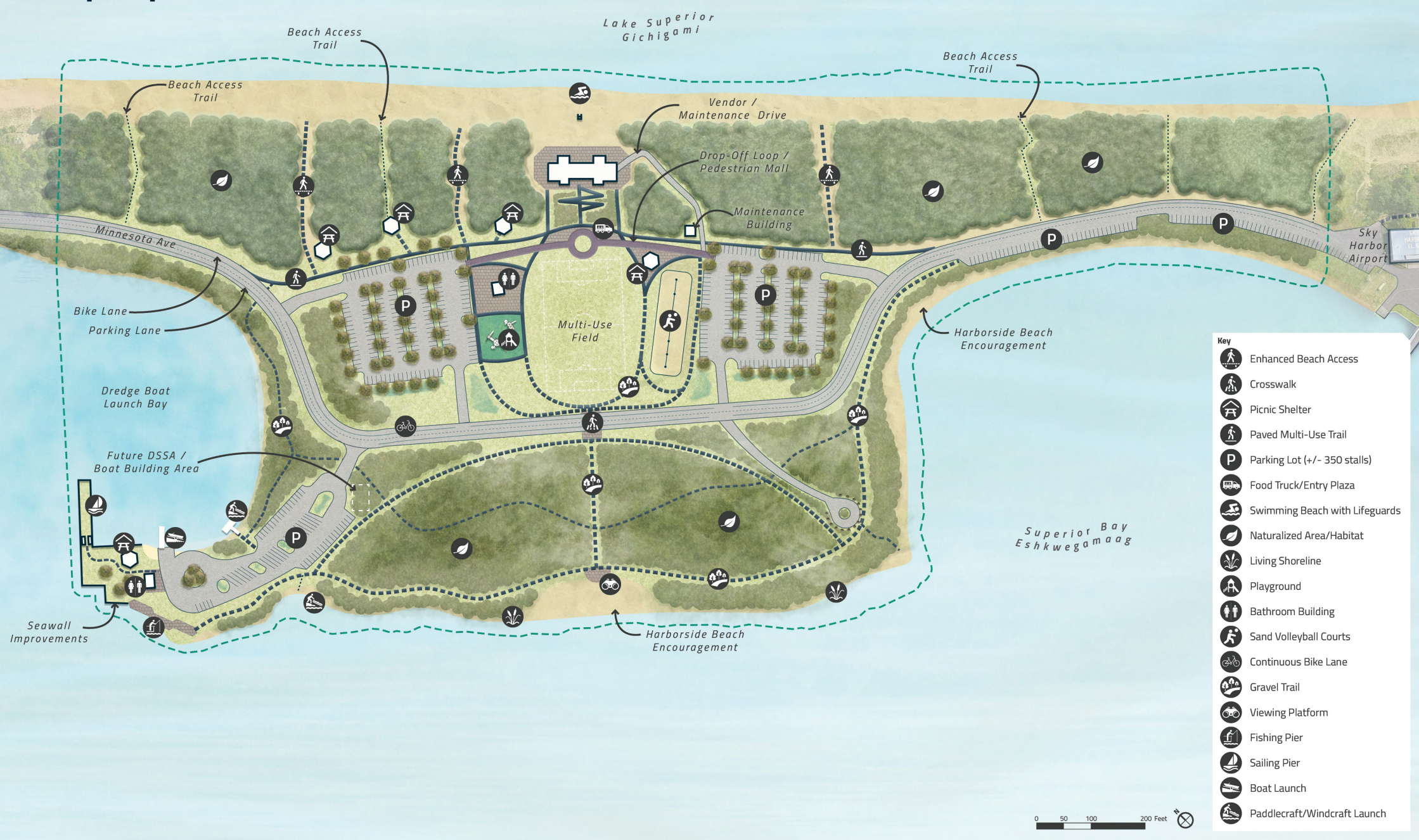
Sustainability

- Retreats road away from shoreline
- Strategic use of available dredged material
- Phased implementation

Reinvestment

- Upgraded parking lots and roadway network
- Trail loops to connect active recreation and naturalized spaces
- Return of playground
- Seawall and boat launch upgrades
- Multi-use field (sized to full soccer field)

Concept 1 | Central Commons



Concept 1 | Central Commons



BIG MOVES

- Utilizes central axis to organize park, framing views of and from the Beach house
- Roadway mimics current alignment while retreating inland approximately 400 feet, and divides active and passive uses
- Two main parking lots frame main active area, connected by a shared use drop-off loop and pedestrian mall. That can be closed for large events and open for daily use.
- Access drive with turnaround to South Point shoreline

Concept 2 | Harborside Connections



Concept 2 | Harborside Connections



BIG MOVES

- Parking lot and recreation space flip for better sense of place and entrance views
- Roadway mimics current alignment, retreating inland 300 feet, and divides active and passive uses
- One main parking lot, with a connected drop-off loop
- Addition of watercraft sports hub and expanded boat launch area

Concept 3 | Linear Flow



Concept 3 | Linear Flow



BIG MOVES

- Linear parkway configuration with three separate parking bays close to activities
- Roadway hugs active park space, is the furthest away from shoreline
- Largest area for naturalized habitat
- Creation of multiple open lawn spaces for events/programming; large field, small field, festival lawn

Let us know what you think!

Get up close & explore the concepts

Talk with the project team

Take the online survey

Leave us your comments



SCAN ME

THANK YOU!