



2025 Proposed Budget

Workforce Development and Senior Programs

Workforce Development and Senior Programs



Special Revenue Funds

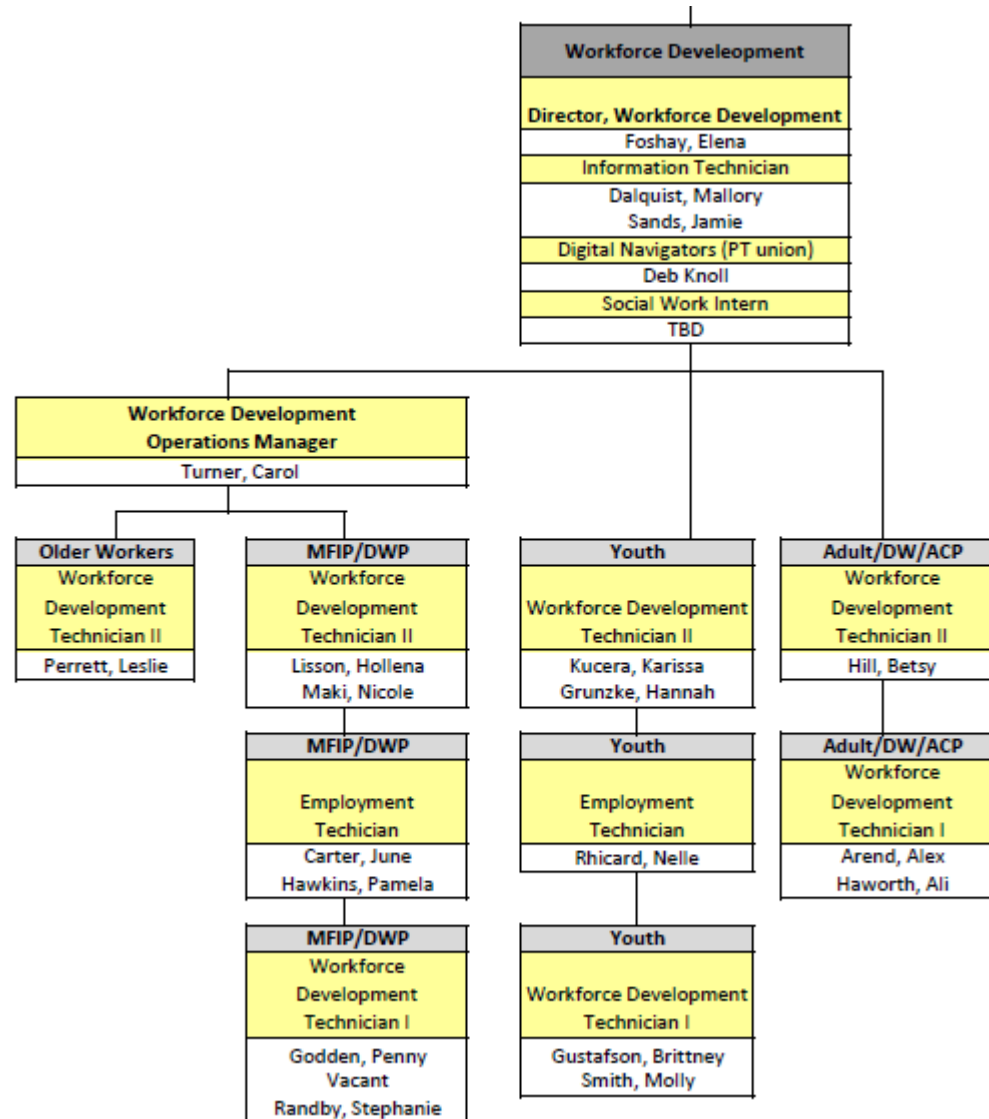
- \$ 3,778,627 - total expense 2025
 - 42% State formula and competitive grants
 - 25% County contracts
 - 25% Federal formula grants
 - 6% Other revenue
 - 1% General Fund

What does Duluth Workforce Development do?

- Operate the Duluth CareerForce Location (a.k.a. The Workforce Center)
- Convene and staff the Duluth Workforce Development Board and all board committees
- Deliver services to jobseekers and employers
- Partner with Duluth Public Schools to support high school graduation and career exploration
- Provide paid work experience to youth, college students, and older workers
- Host job fairs and career exploration events
- Offer drop-in services through a staffed computer lab
- Host Career Pathway Training classes tied to high-demand occupations



Org Chart/Personnel



2024 Budget vs 2025 Budget Revenues



Special Revenue Funds

- \$ 3,778,627 - total expense 2025
- 5.2% decrease from 2024

Workforce Development and Senior Programs by Category			
	2024 Budget	2025 Proposed	Difference
Cash Balance Forward	\$ 308,317	\$ 143,030	\$ (165,287)
Federal Workforce Development Grant	\$ 768,871	\$ 811,430	\$ 42,559
State Workforce Development Grant	\$ 1,785,564	\$ 1,636,387	\$ (149,177)
St Louis County	\$ 843,743	\$ 891,123	\$ 47,380
Miscellaneous Services	\$ 36,086	\$ 52,126	\$ 16,040
Rent of Buildings	\$ 193,198	\$ 194,531	\$ 1,333
Interfund Transfers In From General Fund	\$ 50,000	\$ 50,000	\$ -
Total	\$ 3,985,779	\$ 3,778,627	\$ (207,152)

- 9.2% decrease in federal funding for Adult, Dislocated Worker, and Youth programs in 2025
- 9% decrease in County funding in 2024, assume it will remain the same in 2025
- Anticipated decrease in state funding in 2025, though a lot depends on the legislature

2024 Budget vs 2025 Budget Expenditures



Special Revenue Funds

- \$3,778,627 - total expense 2025

Workforce Development and Senior Programs by Category			
	2024 Budget	2025 Proposed	Difference
Permanent Salaries/Benefits	\$ 2,190,930	\$ 2,257,860	\$ 66,930
Other Wages (participant wages)	\$ 481,497	\$ 439,252	\$ (42,245)
Building Rental	\$ 284,379	\$ 298,282	\$ 13,903
Other Services & Charges	\$ 483,794	\$ 392,234	\$ (91,560)
Tuition Reimbursement	\$ 479,451	\$ 346,830	\$ (132,621)
Grant Admin Charges	\$ 29,598	\$ 38,719	\$ 9,121
All Other Costs under \$10,000 each	\$ 23,670	\$ 5,450	\$ (18,220)
Total	\$ 3,973,319	\$ 3,778,627	\$ (194,692)

- 4.8% increase in rent, will continue increasing at least 3% each year
- Decrease in federal and state funding means less resources for training, work experience, and support services
- Reduction in sub-grants that support some of our partnerships in response to reductions in funding

FTE's 2024 vs 2025



Special Revenue Funds

- \$ 3,778,627 - total expense 2025

	2024	2025	Difference
Director, Workforce Development	1.00	1.00	-
Operations Manager Workforce Dev	1.00	1.00	-
Employment Technician	4.64	2.64	(2.00)
Information Technician	2.00	2.00	-
Digital Navigator	0.80	0.80	-
Workforce Dev Tech I	5.00	7.00	2.00
Workforce Dev Tech Assistant	0.35	-	(0.35)
Workforce Dev Tech II	5.00	6.00	1.00
Total	19.79	20.44	0.65

- 22 full and part time staff
- Added a new YES Duluth counselor this year
- Added another lead staff member to the youth team (promotion)
- Currently 84 paid work experience participants across all programs

2025 Workforce Development and Senior Programs



Special Revenue Funds

- \$ 3,778,627 - total expense 2025

Program	Alignment	Sum of Program Cost
Youth and Young Adult	More Aligned	30.81%
MFIP/DWP	More Aligned	27.34%
Dislocated Worker	More Aligned	15.99%
Career Pathway Training	Less Aligned	13.68%
Older Worker	Less Aligned	5.91%
Talent Attraction	Less Aligned	3.75%
Adult	More Aligned	2.52%

2025 Strategic Opportunities:

- Strategic collaboration with Economic Development team, as well as Planning and Community Development
- Focused Talent Attraction efforts using a task force model that aligns City resources with partners and key stakeholders

2025 Proposed Major Program Changes:

- Launching Homeless Youth Stipend Pilot Program in late 2024, ramping up YES Duluth
- Continuing Older Worker Program pilot, looking for ways to expand
- Expanding sector-focused career pathway programming to support business attraction and expansion

Questions?