





Purchasing Division
Finance Department
Room 120
411 West First Street
Duluth, Minnesota 55802

 218-730-5340
 purchasing@duluthmn.gov

Addendum No. 2
Solicitation 25-99328
Junction Avenue and St. Marie Street Reconditioning

NOTICE

This Addendum is issued to modify, explain, or correct the original drawings, specifications and/or previous addenda and is hereby made a part of the Contract Documents. **Please note receipt of this Addendum by checking the acknowledgement box within the www.bidexpress.com solicitation.**

GENERAL

1. Updates to the Electrical Duct Bank Drawings and Tabulation.
2. Electrical Duct Bank Special Provisions are modified.
3. The Project Bid Form is revised.
4. Descriptions of changes to drawings are for reference only and provide only a general overview of changes made. It is the Contractor's responsibility to fully assess and provide the specific requirements of the Work on all Plan sheets regardless of the description of sheet change(s) provided herein.

DRAWINGS

1. Drawing changes to the GENERAL LAYOUT are as follows:
 - a. Sheet 2; Delete sheet 2 in its entirety and replace with revised Sheet 2.
Revisions to sheet 2 are as follows:
 - i. Adjusted the non-participating limits.
2. Drawing changes to the STATEMENT OF ESTIMATED QUANTITIES are as follows:
 - a. Sheet 4; Delete sheet 4 in its entirety and replace with revised Sheet 4.
Revisions to sheet 4 are as follows:
 - i. Pay item 2104.518 REMOVE CONCRETE WALK quantity changed:
 1. In the NON-PARTICIPATING column to 9513 SQ FT.
 - ii. Pay item 2104.503 REMOVE CURB AND GUTTER quantity changed:
 1. In the PARTICIPATING column to 5060 LIN FT.
 2. In the TOTAL column to 5060 LIN FT.
 - b. Sheet 5; Delete sheet 5 in its entirety and replace with revised Sheet 5.
Revisions to sheet 5 are as follows:
 - i. Pay item 2506.503 CONSTRUCT DRAINAGE STRUCTURE DESIGN SPECIAL quantity changed:

1. In the PARTICIPATING column to 21 LF.
 2. In the TOTAL column to 21 LF.
 - ii. Pay item 2506.503 CONSTRUCT DRAINAGE STRUCTURE DES 48-4020 quantity changed:
 1. In the PARTICIPATING column to 162.7 LIN FT
 2. In the TOTAL column to 162.7 LIN FT.
 - iii. Pay item 2511.507 RANDOM RIPRAP CLASS III quantity changed:
 1. In the PARTICIPATING column to 22 CU YD.
 2. In the TOTAL column to 22 CU YD.
 - iv. Pay item 2521.518 6" CONCRETE WALK quantity changed:
 1. In the NON-PARTICIPATING COLUMN to 10037 SQ FT.
 - v. Pay item 2521.602 DRILL & GROUT REINF BAR (EPOXY COATED) quantity changed:
 1. In the NON-PARTICIPATING column to 107 EACH.
 - vi. Pay item 2531.503 CONCRETE CURB AND GUTTER DESIGN B624 quantity changed:
 1. In the PARTICIPATING COLUMN to 2950 LIN FT.
 2. In the TOTAL COLUMN to 3140 LIN FT
 - vii. Pay item 2531.504 8" CONCRETE DRIVEWAY PAVEMENT quantity changed:
 1. In the PARTICIPATING column to 382 SQ YD.
 2. In the TOTAL column to 415 SQ YD.
 - c. Sheet 6; Delete sheet 6 in its entirety and replace with revised Sheet 6.
Revisions to sheet 6 are as follows:
 - i. Pay item 2574.507 COMMON TOPSOIL BORROW quantity changed:
 - a. In the NON-PARTICIPATING column to 103 CU YD.
 - ii. Pay item 2575.504 SODDING TYPE SALT TOLERANT quantity changed:
 - a. In the NON-PARTICIPATING column to 773 SQ YD.
3. Drawing changes to the CONSTRUCTION CHARTS are as follows:
- a. Sheet 7; Delete Sheet 7 in its entirety and replace with revised sheet 7.
Revisions to sheet 7 are as follows:
 - i. Quantity updates are as follows for REMOVE CURB AND GUTTER:
 1. From STA 110+03.18 to STA 114+25.00 updated to be 850 LIN FT.
 2. Total updated to be 5060 LIN FT.
 - b. Sheet 8; Delete Sheet 8 in its entirety and replace with revised sheet 8.
Revisions to sheet 8 are as follows:
 - i. Quantity updates are as follows for CONCRETE CURB AND GUTTER DESIGN B624:
 1. From STA 110+03.18 to STA 114+25.00 updated to be 370 LIN FT.
 2. Project sub total updated to be 3140 LIN FT
 3. Project total updated to be 3140 LIN FT
 - ii. 7" CONCRETE DRIVEWAY PAVEMENT updated to be quantified by the SQ YD.
 - iii. 8" CONCRETE DRIVEWAY PAVEMENT updated to be quantified by the SQ YD.
 - iv. Quantity updates are as follows for 8" CONCRETE DRIVEWAY PAVEMENT:
 1. From STA 131+00 to STA 140+79.49 updated to be 25 SQ YD.
 2. Project sub total updated to be 415 SQ YD.
 3. Project total updated to be 415 SQ YD.

- c. Sheet 15; Delete Sheet 15 in its entirety and replace with revised sheet 15.
Revisions to sheet 15 are as follows:
 - i. Structure Number PCB-208:
 - 1. Rim elevation changed to 1130.17
 - 2. CONSTRUCT DRAINAGE STRUCTURE DESIGN 48-4020 updated to 7.88 LIN FT.
 - ii. Quantity updates are as follows for RANDOM RIPRAP CLASS III:
 - 1. For STRUCTURE NUMBER *PMH-202* updated to be 12.3 CU YD.
 - 2. For CHART TOTAL (THIS SHEET) updated to be 12.3 CU YD.
 - iii. For CONSTRUCT DRAINAGE STRUCTURE DESIGN 48-4020:
 - 1. CHART TOTAL (THIS SHEET) updated to 96.3 LIN FT
 - d. Sheet 17; Delete Sheet 17 in its entirety and replace with revised sheet 17.
Revisions to sheet 17 are as follows:
 - i. PROJECT TOTALS were updated for the following:
 - 1. RANDOM RIPRAP CLASS III updated to 22 CU YD.
 - 2. CONSTRUCT DRAINAGE STRUCTURE DESIGN SPECIAL updated to 21 LIN FT.
 - 3. CONSTRUCT DRAINAGE STRUCTURE DESIGN 48-4020 updated to 162.7 LIN FT.
4. Drawing changes to the CONSTRUCTION DETAILS are as follows:
 - a. Sheet 30; Delete Sheet 30 in its entirety and replace with revised Sheet 30
Revisions to sheet 30 are as follows:
 - i. Detail STR-3 Updated to provide 6" AGGREGATE BASE (CV) CL 5 (INCIDENTAL).
5. Drawing changes to the CONSTRUCTION PLAN are as follows:
 - a. Sheet 57; Delete sheet 57 in its entirety and replace with revised Sheet 57
Revisions to sheet 57 are as follows:
 - i. Included additional curb for replacement between STA 110+03 and STA 110+70 offset LT.
6. Drawing changes to the INTERSECTION DETAILS are as follows:
 - a. Sheet 68; Delete sheet 68 in its entirety and replace with revised Sheet 68.
Revisions to sheet 68 are as follows:
 - i. Updated elevations in the SW quadrant.
 - ii. Updated SB road cross slope information.
7. Drawing changes to the PROPOSED STORM PROFILES are as follows:
 - a. Sheet 77; Delete Sheet 77 in its entirety and replace with revised Sheet 77.
Revisions to Sheet 77 are as follows:
 - i. Updated structure number PCB-208 RIM elevation to 1130.17.
8. Drawing changes to the DUCT BANK are as follows:
 - a. Sheet DB01; Delete Sheet DB01 in its entirety and replace with revised Sheet DB01.
Revisions to Sheet DB01 are as follows:
 - i. Amended note "ESG-1 SWITCHGEAR" to include "ROUTE (1) 6" CONDUIT IN/OUT OF ESG-1

- ii. Amended note 3 “The final duct bank alignment is expected to change from the plan alignment based upon field conditions, utility conflicts and the need to minimize curb and gutter removals.”
 - iii. Added items:
 - 1. DIRECTIONAL BORE (1) 4” CONDUIT TO APARTMENTS
 - 2. DIRECTIONAL BORE (1) 4” CONDUIT TO FIREHALL
 - iv. Revised construction sequencing note
- b. Sheet DB02; Delete Sheet DB02 in its entirety and replace with revised Sheet DB02.
Revisions to Sheet DB02 are as follows:
 - i. Increased ()” NON-METALLIC CONDUIT ELECTRICAL DUCT (DIRECTIONAL BORE) 2550 to be 256 LF
- c. Sheet DB04; Delete Sheet DB04 in its entirety and replace with revised Sheet DB04.
Revisions to Sheet DB04 are as follows:
 - i. Amended note “ESG-1 SWITCHGEAR” to include “ROUTE (1) 6” CONDUIT IN/OUT OF ESG-1
 - ii. Added items:
 - 1. DIRECTIONAL DRILL (1) 4” CONDUIT TO APARTMENTS
 - 2. DIRECTIONAL DRILL (1) 4” CONDUIT TO FIREHALL
- d. Sheet DB07; Delete Sheet DB07 in its entirety and replace with revised Sheet DB07.
Revisions to sheet DB07 are as follows:
 - i. Changed note from “(2)6” ELECTRICAL CONDUITS (DIRECT BURY)” to “(2)6” ELECTRICAL CONDUITS (CONCRETE ENCASED)”.

SPECIFICATIONS


1. Specification changes to Division SB are as follows:
 - a. Section SP-2 (2550) “()” INCH, NON-METALLIC CONDUIT (DIRECTIONAL BORE) is hereby amended as follows:
 - i. SP-2.2.A.1 HDPE pipe shall be provided by Contractor.
 - b. Section SP-3.2 (2550) “()” INCH, NON-METALLIC CONDUIT (DIRECT BURY) is hereby amended as follows:
 - i. SP-3.2.A PVC conduit shall be provided by Owner.
 - c. SP-4.2 (2550) ELECTRICAL DUCT BANK TYPE “()” is hereby amended as follows:
 - i. SP-4.2.A PVC conduit shall be provided by Owner.
2. Specification changes to Division S are as follows:
 - a. Section SP-3 Work Sequence is hereby amended as follows:
 - i. SP-3.3 Duct Bank work shall be completed Between May 13th and August 18th in a continuous manner until complete.
 1. Duct bank work between College Street and E. Niagara Street shall be completed during road closure as described in Phase 1: Junction Avenue.
 2. Duct bank work north of E. Niagara may be completed in a continuous manner to its termination point near Lot U regardless of remaining phased roadway work.


Posted: March 24, 2025

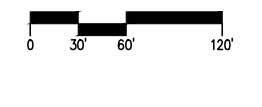
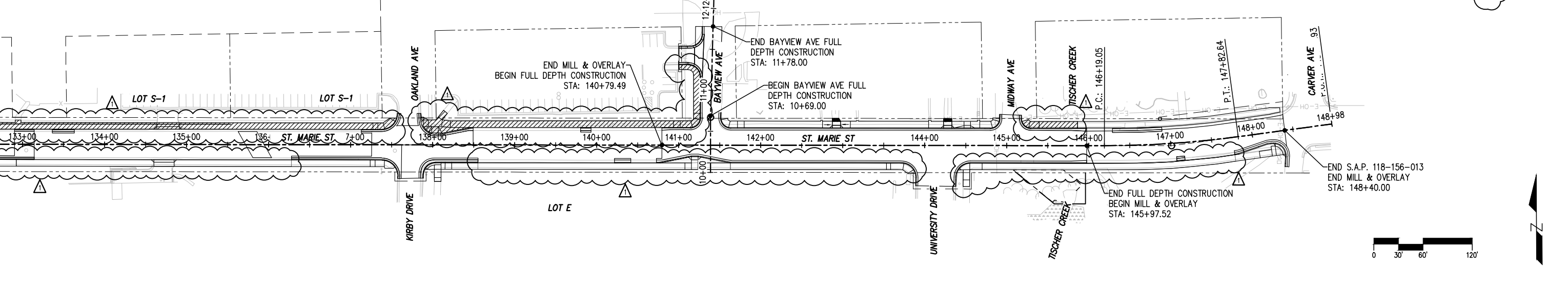
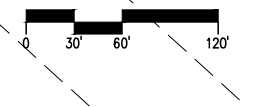
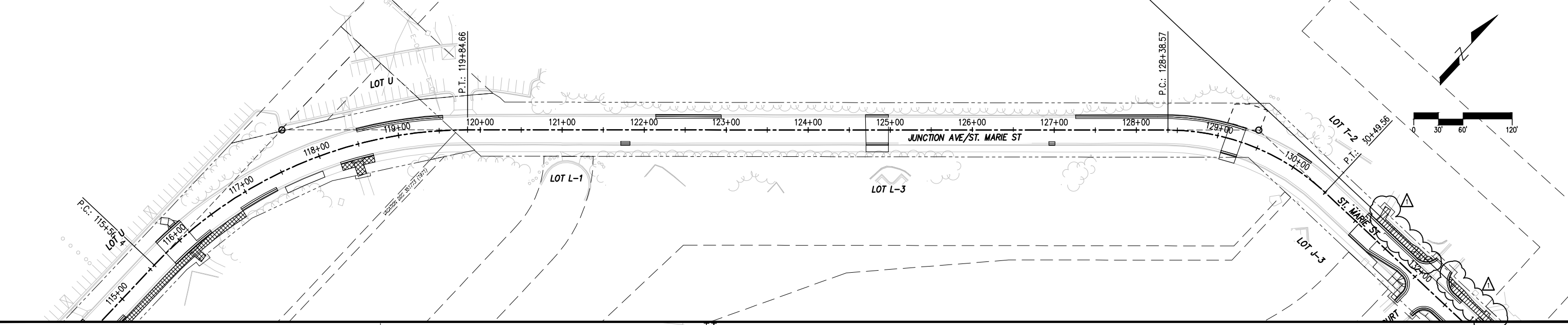
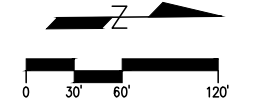
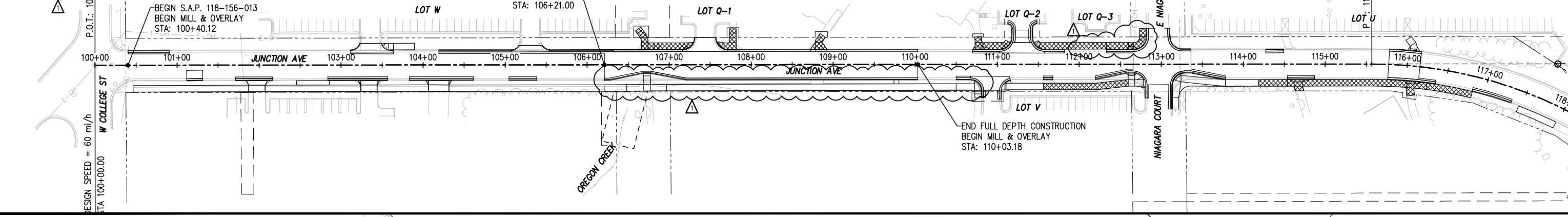
END OF ADDENDUM

NOTES:

ALL CONTINUOUS SIDEWALK REPLACEMENT SEGMENTS SHALL BE CONSIDERED PARTICIPATING ITEMS UNLESS NOTED OTHERWISE AS SHOWN BELOW:

 100% NON-PARTICIPATING

 37.5% NON-PARTICIPATING



PLOT DATE: 3/19/2025 12:44:27 PM FILE: G:\24250\240250\500 Drawings\Civil\240250_02.0_General Layout.dwg

LHB PROJECT NO. 240250

I HEREBY CERTIFY that this plan, specification or report was prepared by me or under my direct supervision and that I am a duly Licensed Professional Engineer under the laws of the State of Minnesota.

BRAD REIFSTECK
PRINTED NAME

SIGNATURE

02/07/2025
DATE
47930
LIC. NO.

S.A.P. 118-156-013
CITY PROJECT 1464

JUNCTION AVE/ST. MARIE ST. RECONDITIONING

1	03/25/2025	ADDENDUM 01
GENERAL LAYOUT		
SHEET NO. 2 OF 89 SHEETS		

STATEMENT OF ESTIMATED QUANTITIES NOTES

1. ANY CASTINGS NOT REUSED OR SALVAGED TO THE CITY ON PROJECT SHALL BE DISPOSED OF BY THE CONTRACTOR.
2. INCLUDES SAWCUTTING OF BITUMINOUS AND CURB.
3. ALL MILLINGS SHALL BE PROPERLY DISPOSED OF BY THE CONTRACTOR AT AN APPROVED LOCATION OR CAN BECOME THE PROPERTY OF THE CONTRACTOR. THIS WORK SHALL BE INCLUDED FOR PAYMENT IN THE MILL BITUMINOUS SURFACE 2" PAY ITEM.
4. BITUMINOUS MATERIAL FOR TACK COAT (SPEC. 2357) SHALL BE PLACED AT A RATE OF 0.10 GAL/SQ. YD. BETWEEN ALL LIFTS FOR MILLED SURFACES AND AT A RATE OF 0.05 GAL/SQ. YD. FOR NEW CONSTRUCTION..
5. STRING LINE SHALL BE USED ON ALL LIFTS FOR A GUIDE OF PAVING OPERATIONS.
6. BITUMINOUS TONNAGE COMPUTED AT 115 LBS/SQ. YD./INCH OF THICKNESS.
7. DURING MILLING AND OVERLAY OPERATIONS THE CONTRACTOR SHALL PROVIDE A STREET SWEEPER WITH PICKUP BROOM TO REMOVE EXCESS MILLINGS AND CLEAN THE MILLED SURFACE TO THE APPROVAL OF THE ENGINEER PRIOR TO APPLICATION OF TACK COAT (INCIDENTAL).
8. INCLUDES PAYMENT FOR 6" CLASS 5 BASE UNDER WALK AND EXCAVATION - COMMON.
9. INCLUDES PAYMENT FOR 12" CLASS 5 BASE UNDER DRIVE AND EXCAVATION - COMMON.
10. INCLUDES STOCKPILE OF EXISTING TOPSOIL.
11. STORM WATER QUALITY STRUCTURE. AS NOTED IN THE STORM SEWER TABULATION.
12. MOUNTING HEIGHT IS 7 FEET UNLESS OTHERWISE SPECIFIED.
13. RESIDENTIAL CONCRETE DRIVEWAY
14. COMMERCIAL CONCRETE DRIVEWAY
15. BUS PAD PAID UNDER 6" CONCRETE WALK PAY ITEM. BUS PAD TO BE INSTALLED WITH CROSS SLOPE LESS THAN OR EQUAL TO 2% AND RUNNING SLOPE TO MATCH ROAD PROFILE.
16. INCLUDED PAYMENT FOR CURB REPLACEMENT WITH WIDER GUTTER PAN, SUCH AS THE CURB BETWEEN OAKLAND AVE AND BAYVIEW AVE.
17. INCLUDED VERTICAL HEIGHTS FROM 0" TO 12"
18. B624 CONCRETE CURB AND GUTTER WITH SILL CURB
19. USED FOR STREET RESTORATION PATCH PER CITY STANDARD SPECIFICATION.
20. ITEM SHALL BE USED FOR PERMANENT RESTORATION IF FINAL RESTORATION IS PERFORMED AFTER AUGUST 8TH, 2025.
21. ITEM SHALL BE USED FOR PERMANENT RESTORATION IF FINAL RESTORATION IS PERFORMED ON OR BEFORE AUGUST 8TH, 2025.
22. TOKEN QUANTITY.
23. AS DIRECTED BY THE ENGINEER.
24. NEW SIGN DESIGNS SHALL BE SUBMITTED TO THE ENGINEER FOR APPROVAL PRIOR TO INSTALLATION.

STATEMENT OF ESTIMATED QUANTITIES

NOTES	TAB	ITEM NO.	ITEM	UNIT	TOTAL	S.A.P. 118-156-013	S.A.P. 118-156-013	LOCAL
						PARTICIPATING ROADWAY	PARTICIPATING STORM	NON PARTICIPATING
		2021.501	MOBILIZATION	LUMP SUM	1.00	0.72		0.28
		2101.505	CLEARING	ACRE	0.01	0.01		
		2101.505	GRUBBING	ACRE	0.01	0.01		
		2101.502	CLEARING	EACH	2	2		
		2101.502	GRUBBING	EACH	2	2		
		2104.502	REMOVE PIPE APRRON	EACH	3	3		
		2104.502	REMOVE MANHOLE OR CATCH BASIN	EACH	38	38		
1		2104.502	REMOVE CASTING	EACH	1	1		
	ST-A	2104.502	REMOVE SIGN	EACH	69	69		
	G, ST-A	2104.502	SALVAGE SIGN	EACH	17	17		
	G	2104.502	SALVAGE SIGN PANEL	EACH	13	13		
		2104.503	SAWING BITUMINOUS PAVEMENT (FULL DEPTH)	LIN FT	3 690	3660		30
	A	2104.503	SAWING CONCRETE PAVEMENT (FULL DEPTH)	LIN FT	580	570		10
		2104.503	REMOVE PIPE SEWERS	LIN FT	1 393	1393		
2		2104.503	REMOVE CURB AND GUTTER	LIN FT	5 060	5060		
		2104.504	REMOVE BITUMINOUS PAVEMENT	SQ YD	10 850	10520		330
		2104.518	REMOVE CONCRETE WALK	SQ FT	23 180	13667		9513
		2104.518	REMOVE CONCRETE DRIVEWAY PAVEMENT	SQ FT	2 010	2010		
	G	2104.602	REMOVE SIGN SPECIAL	EACH	11	11		
10		2106.507	EXCAVATION - COMMON (P)	CU YD	1 600	1480		120
		2106.507	EXCAVATION - SUBGRADE	CU YD	3 790	3640		150
		2106.507	SELECT GRANULAR EMBANKMENT MOD 7% (CV)	CU YD	2 250	2100		150
23		2106.507	COMMON EMBANKMENT (CV)	CU YD	1 540	1540		
		2106.607	EXCAVATION SPECIAL	CU YD	100	100		
		2106.607	HAUL & DISPOSE OF CONTAMINATED MATERIALS	CU YD	200	200		
		2108.504	GEOTEXTILE FABRIC TYPE 5	SQ YD	4 690	4200		490
		2118.507	AGGREGATE SURFACING (CV) CLASS 5	CU YD	20	20		
		2123.610	STREET SWEEPER (WITH PICKUP BROOM)	HOUR	20	20		
		2211.507	AGGREGATE BASE (CV) CLASS 5	CU YD	1 430	1330		100
3, 7		2232.504	MILL BITUMINOUS SURFACE (2.0")	SQ YD	14 430	14430		
		2331.603	JOINT ADHESIVE	LIN FT	10 740	10520		220
4		2357.506	BITUMINOUS MATERIAL FOR TACK COAT	GALLON	1 820	1790		30

(P) PLANNED QUANTITY

PLOT DATE: 3/20/2025 1:19:03 PM FILE: Q:\24Pro\240250\500 Drawings\Civil\240250_03.0_SEQ.dwg

LHB PROJECT NO. 240250

I HEREBY CERTIFY that this plan, specification or report was prepared by me or under my direct supervision and that I am a duly Licensed Professional Engineer under the laws of the State of Minnesota.

BRAD REIFSTECK
PRINTED NAME

SIGNATURE

02/07/2025
DATE
47930
LIC. NO.

S.A.P. 118-156-013

CITY PROJECT 1464

JUNCTION AVE/ST. MARIE ST. RECONDITIONING

1 | 03/25/2025 | ADDENDUM 01

STATEMENT OF ESTIMATED QUANTITIES

SHEET NO. 4 OF 89 SHEETS

STATEMENT OF ESTIMATED QUANTITIES NOTES

1. ANY CASTINGS NOT REUSED OR SALVAGED TO THE CITY ON PROJECT SHALL BE DISPOSED OF BY THE CONTRACTOR.
2. INCLUDES SAWCUTTING OF BITUMINOUS AND CURB.
3. ALL MILLINGS SHALL BE PROPERLY DISPOSED OF BY THE CONTRACTOR AT AN APPROVED LOCATION OR CAN BECOME THE PROPERTY OF THE CONTRACTOR. THIS WORK SHALL BE INCLUDED FOR PAYMENT IN THE MILL BITUMINOUS SURFACE 2" PAY ITEM.
4. BITUMINOUS MATERIAL FOR TACK COAT (SPEC. 2357) SHALL BE PLACED AT A RATE OF 0.10 GAL/SQ. YD. BETWEEN ALL LIFTS FOR MILLED SURFACES AND AT A RATE OF 0.05 GAL/SQ. YD. FOR NEW CONSTRUCTION..
5. STRING LINE SHALL BE USED ON ALL LIFTS FOR A GUIDE OF PAVING OPERATIONS.
6. BITUMINOUS TONNAGE COMPUTED AT 115 LBS/SQ. YD./INCH OF THICKNESS.
7. DURING MILLING AND OVERLAY OPERATIONS THE CONTRACTOR SHALL PROVIDE A STREET SWEEPER WITH PICKUP BROOM TO REMOVE EXCESS MILLINGS AND CLEAN THE MILLED SURFACE TO THE APPROVAL OF THE ENGINEER PRIOR TO APPLICATION OF TACK COAT (INCIDENTAL).
8. INCLUDES PAYMENT FOR 6" CLASS 5 BASE UNDER WALK AND EXCAVATION - COMMON.
9. INCLUDES PAYMENT FOR 12" CLASS 5 BASE UNDER DRIVE AND EXCAVATION - COMMON.
10. INCLUDES STOCKPILE OF EXISTING TOPSOIL.
11. STORM WATER QUALITY STRUCTURE. AS NOTED IN THE STORM SEWER TABULATION.
12. MOUNTING HEIGHT IS 7 FEET UNLESS OTHERWISE SPECIFIED.
13. RESIDENTIAL CONCRETE DRIVEWAY
14. COMMERCIAL CONCRETE DRIVEWAY
15. BUS PAD PAID UNDER 6" CONCRETE WALK PAY ITEM. BUS PAD TO BE INSTALLED WITH CROSS SLOPE LESS THAN OR EQUAL TO 2% AND RUNNING SLOPE TO MATCH ROAD PROFILE.
16. INCLUDED PAYMENT FOR CURB REPLACEMENT WITH WIDER GUTTER PAN, SUCH AS THE CURB BETWEEN OAKLAND AVE AND BAYVIEW AVE.
17. INCLUDED VERTICAL HEIGHTS FROM 0" TO 12"
18. B624 CONCRETE CURB AND GUTTER WITH SILL CURB
19. USED FOR STREET RESTORATION PATCH PER CITY STANDARD SPECIFICATION.
20. ITEM SHALL BE USED FOR PERMANENT RESTORATION IF FINAL RESTORATION IS PERFORMED AFTER AUGUST 8TH, 2025.
21. ITEM SHALL BE USED FOR PERMANENT RESTORATION IF FINAL RESTORATION IS PERFORMED ON OR BEFORE AUGUST 8TH, 2025.
22. TOKEN QUANTITY.
23. AS DIRECTED BY THE ENGINEER.
24. NEW SIGN DESIGNS SHALL BE SUBMITTED TO THE ENGINEER FOR APPROVAL PRIOR TO INSTALLATION.

STATEMENT OF ESTIMATED QUANTITIES

NOTES	TAB	ITEM NO.	ITEM	UNIT	TOTAL	S.A.P. 118-156-013	S.A.P. 118-156-013	LOCAL
						PARTICIPATING ROADWAY	PARTICIPATING STORM	NON PARTICIPATING
19		2360.504	TYPE SP 12.5 NON WEARING COURSE MIXTURE (3,C) 8" THICK	SQ YD	7 120	7120		
5, 6		2360.509	TYPE SP 9.5 WEARING COURSE MIXTURE (3,C)	TON	2 250	2180		70
5, 6		2360.509	TYPE SP 12.5 NON WEARING COURSE MIXTURE (3,C)	TON	640	640		
		2451.507	GRANULAR BACKFILL (CV)	CU YD	2 310	2310		
		2451.507	COARSE AGGREGATE BEDDING (CV)	CU YD	390	390		
	X	2501.502	12" RC PIPE APRON	EACH	1		1	
	X	2501.502	24" RC PIPE APRON	EACH	1		1	
	X	2501.502	30" RC PIPE APRON	EACH	1		1	
	X	2502.503	4" PERFORATED TP PIPE DRAIN (MODIFIED)	LIN FT	948	948		
		2502.503	4" PERFORATED PVC PIPE DRAIN	LIN FT	2 487	2487		
	X	2503.503	12" RC PIPE SEWER DESIGN 3006 CLASS III	LIN FT	979		979	
	X	2503.503	15" RC PIPE SEWER DESIGN 3006 CLASS III	LIN FT	102		102	
	X	2503.503	18" RC PIPE SEWER DESIGN 3006 CLASS III	LIN FT	153		153	
	X	2503.503	24" RC PIPE SEWER DESIGN 3006 CLASS III	LIN FT	772		772	
	X	2503.503	30" RC PIPE SEWER DESIGN 3006 CLASS III	LIN FT	93		93	
	X	2503.602	CONNECT TO EXISTING STORM SEWER	EACH	25		25	
	X	2503.602	CONNECT INTO EXISTING DRAINAGE STRUCTURE	EACH	1		1	
		2503.603	LINING SEWER PIPE 12"	LIN FT	99	99		
		2503.603	LINING SEWER PIPE 15"	LIN FT	450	450		
22, 23		2504.602	VALVE BOX	EACH	2	2		
		2504.602	ADJUST VALVE BOX	EACH	14	14		
		2504.602	CONCRETE ENCASED VALVE BOX COLLAR	EACH	7	7		
		2505.602	ADJUST VALVE BOX-GAS	EACH	1	1		
	X	2506.502	CONSTRUCT DRAINAGE STRUCTURE DESIGN G OR H	EACH	32		32	
	X	2506.502	CASTING ASSEMBLY	EACH	27		27	
		2506.502	ADJUST FRAME AND RING CASTING	EACH	3	3		
11	X	2506.503	CONSTRUCT DRAINAGE STRUCTURE DESIGN SPECIAL	LIN FT	21.0		21.0	
	X	2506.503	CONSTRUCT DRAINAGE STRUCTURE DES 48-4020	LIN FT	162.7		162.7	
	X	2506.502	CONSTRUCT DRAINAGE STRUCTURE DES 60-4020	LIN FT	11.7		11.7	
	X, B	2506.602	CONCRETE ENCASED CASTING COLLAR	EACH	15		15	
	X	2511.504	GEOTEXTILE FILTER TYPE 4	SQ YD	67	67		
	X	2511.507	RANDOM RIPRAP CLASS III	CU YD	22	22		
8, 15	C	2521.518	6" CONCRETE WALK	SQ FT	45 248	35211		10037
	C	2521.602	DRILL AND GROUT REINF BAR (EPOXY COATED)	EACH	812	705		107
	C	2531.503	CONCRETE CURB AND GUTTER DESIGN SPECIAL	LIN FT	1 380	1380		
	C	2531.503	CONCRETE CURB AND GUTTER DESIGN B624	LIN FT	3 140	2950		190
16	C	2531.503	CONCRETE CURB AND GUTTER DESIGN B636	LIN FT	103	103		
	C	2531.503	CONCRETE CURB AND GUTTER DESIGN S524	LIN FT	567	567		
17	C	2531.503	CONCRETE CURB DESIGN V8 (MODIFIED)	LIN FT	150	150		
9, 13	C	2531.504	7" CONCRETE DRIVEWAY PAVEMENT	SQ YD	20	20		
9, 14	C	2531.504	8" CONCRETE DRIVEWAY PAVEMENT	SQ YD	415	382		33
	C	2531.618	TRUNCATED DOMES	SQ FT	808	808		

(P) PLANNED QUANTITY

PLOT DATE: 3/20/2025 1:18:53 PM FILE: Q:\24Pro\240250\500 Drawings\Civil\240250_03.0_SEQ.dwg

LHB PROJECT NO. 240250

I HEREBY CERTIFY that this plan, specification or report was prepared by me or under my direct supervision and that I am a duly Licensed Professional Engineer under the laws of the State of Minnesota.

BRAD REIFSTECK
PRINTED NAME

SIGNATURE

02/07/2025
DATE
47930
LIC. NO.

S.A.P. 118-156-013

CITY PROJECT 1464

JUNCTION AVE/ST. MARIE ST. RECONDITIONING

1 03/25/2025 ADDENDUM 01

STATEMENT OF ESTIMATED QUANTITIES

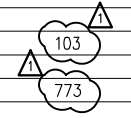
SHEET NO. 5 OF 89 SHEETS

STATEMENT OF ESTIMATED QUANTITIES NOTES

1. ANY CASTINGS NOT REUSED OR SALVAGED TO THE CITY ON PROJECT SHALL BE DISPOSED OF BY THE CONTRACTOR.
2. INCLUDES SAWCUTTING OF BITUMINOUS AND CURB.
3. ALL MILLINGS SHALL BE PROPERLY DISPOSED OF BY THE CONTRACTOR AT AN APPROVED LOCATION OR CAN BECOME THE PROPERTY OF THE CONTRACTOR. THIS WORK SHALL BE INCLUDED FOR PAYMENT IN THE MILL BITUMINOUS SURFACE 2" PAY ITEM.
4. BITUMINOUS MATERIAL FOR TACK COAT (SPEC. 2357) SHALL BE PLACED AT A RATE OF 0.10 GAL/SQ. YD. BETWEEN ALL LIFTS FOR MILLED SURFACES AND AT A RATE OF 0.05 GAL/SQ. YD. FOR NEW CONSTRUCTION..
5. STRING LINE SHALL BE USED ON ALL LIFTS FOR A GUIDE OF PAVING OPERATIONS.
6. BITUMINOUS TONNAGE COMPUTED AT 115 LBS/SQ. YD./INCH OF THICKNESS.
7. DURING MILLING AND OVERLAY OPERATIONS THE CONTRACTOR SHALL PROVIDE A STREET SWEEPER WITH PICKUP BROOM TO REMOVE EXCESS MILLINGS AND CLEAN THE MILLED SURFACE TO THE APPROVAL OF THE ENGINEER PRIOR TO APPLICATION OF TACK COAT (INCIDENTAL).
8. INCLUDES PAYMENT FOR 6" CLASS 5 BASE UNDER WALK AND EXCAVATION - COMMON.
9. INCLUDES PAYMENT FOR 12" CLASS 5 BASE UNDER DRIVE AND EXCAVATION - COMMON.
10. INCLUDES STOCKPILE OF EXISTING TOPSOIL.
11. STORM WATER QUALITY STRUCTURE. AS NOTED IN THE STORM SEWER TABULATION.
12. MOUNTING HEIGHT IS 7 FEET UNLESS OTHERWISE SPECIFIED.
13. RESIDENTIAL CONCRETE DRIVEWAY
14. COMMERCIAL CONCRETE DRIVEWAY
15. BUS PAD PAID UNDER 6" CONCRETE WALK PAY ITEM. BUS PAD TO BE INSTALLED WITH CROSS SLOPE LESS THAN OR EQUAL TO 2% AND RUNNING SLOPE TO MATCH ROAD PROFILE.
16. INCLUDED PAYMENT FOR CURB REPLACEMENT WITH WIDER GUTTER PAN, SUCH AS THE CURB BETWEEN OAKLAND AVE AND BAYVIEW AVE.
17. INCLUDED VERTICAL HEIGHTS FROM 0" TO 12"
18. B624 CONCRETE CURB AND GUTTER WITH SILL CURB
19. USED FOR STREET RESTORATION PATCH PER CITY STANDARD SPECIFICATION.
20. ITEM SHALL BE USED FOR PERMANENT RESTORATION IF FINAL RESTORATION IS PERFORMED AFTER AUGUST 8TH, 2025.
21. ITEM SHALL BE USED FOR PERMANENT RESTORATION IF FINAL RESTORATION IS PERFORMED ON OR BEFORE AUGUST 8TH, 2025.
22. TOKEN QUANTITY.
23. AS DIRECTED BY THE ENGINEER.
24. NEW SIGN DESIGNS SHALL BE SUBMITTED TO THE ENGINEER FOR APPROVAL PRIOR TO INSTALLATION.

STATEMENT OF ESTIMATED QUANTITIES

NOTES	TAB	ITEM NO.	ITEM	UNIT	TOTAL	S.A.P. 118-156-013	S.A.P. 118-156-013	LOCAL
						PARTICIPATING	PARTICIPATING	NON PARTICIPATING
						ROADWAY	STORM	
		2540.602	ADJUST MONUMENT BOX	EACH	4	4		
		2540.602	CONSTRUCT SURVEY MONUMENT	EACH	1	1		
		2545.503	4" NON-METALLIC CONDUIT	LIN FT	90	90		
	DB	2550.601	ELECTRICAL SERVICE	LUMP SUM	1.00			1.00
		2563.601	TRAFFIC CONTROL	LUMP SUM	1.00	0.72		0.28
	G	2564.502	INSTALL SIGN PANEL	EACH	13	13		
12	G, ST-A	2564.602	INSTALL SIGN	EACH	17	17		
24	ST-A	2564.618	SIGN	SQ FT	332.31	332.31		
24	G	2564.618	SIGN TYPE SPECIAL	SQ FT	20.50	1.25		19.25
	F	2573.503	SILT FENCE, TYPE MS	LIN FT	880	880		
	F	2573.503	SEDIMENT CONTROL LOG TYPE WOOD FIBER	LIN FT	120	120		
	F	2573.503	SEDIMENT CONTROL LOG TYPE ROCK	LIN FT	70	70		
	F	2573.502	STORM DRAIN INLET PROTECTION	EACH	50	50		
	F	2574.507	COMMON TOPSOIL BORROW	CU YD	630	528		
20	F	2575.504	SODDING TYPE SALT TOLERANT	SQ YD	5 590	4817		
21	F	2575.605	TURF ESTABLISHMENT	ACRE	0.13	0.13		
	PM	2582.503	4" SOLID LINE MULTI-COMPONENT GROUND IN (WR)	LIN FT	9 490	9490		
	PM	2582.503	6" SOLID LINE MULTI-COMPONENT GROUND IN (WR)	LIN FT	2 690	2690		
	PM	2582.503	24" SOLID LINE MULTI-COMPONENT GROUND IN (WR)	LIN FT	80	80		
	PM	2582.518	CROSSWALK PREFORM THERMOPLASTIC GROUND IN CONTRAST	SQ FT	1 820	1820		



(P) PLANNED QUANTITY

PLOT DATE: 3/19/2025 12:43:51 PM FILE: G:\24Proj\240250\500 Drawings\Civil\240250_03.0_SEQ.dwg

LHB PROJECT NO. 240250

I HEREBY CERTIFY that this plan, specification or report was prepared by me or under my direct supervision and that I am a duly Licensed Professional Engineer under the laws of the State of Minnesota.

BRAD REIFSTECK
PRINTED NAME

SIGNATURE

02/07/2025
DATE
47930
LIC. NO.

S.A.P. 118-156-013
CITY PROJECT 1464

JUNCTION AVE/ST. MARIE ST. RECONDITIONING

1	03/25/2025	ADDENDUM 01
STATEMENT OF ESTIMATED QUANTITIES		
SHEET NO. 6 OF 89 SHEETS		

REMOVALS															A		
STATION	TO	STATION	ALIGNMENT	SPEC. 2101		SPEC. 2104									REMARKS		
				CLEARING & GRUBBING	CLEARING & GRUBBING	REMOVE PIPE APRON	REMOVE MANHOLE OR CATCH BASIN	REMOVE CASTING	SAWING BITUMINOUS PAVEMENT (FULL DEPTH)	SAWING CONCRETE PAVEMENT (FULL DEPTH)	REMOVE PIPE SEWERS	REMOVE CURB AND GUTTER	REMOVE BITUMINOUS PAVEMENT	REMOVE CONCRETE WALK		REMOVE CONCRETE DRIVEWAY PAVEMENT	
				ACRE	TREE	EACH	EACH	EACH	LIN FT	LIN FT	LIN FT	LIN FT	SQ YD	SQ FT		SQ FT	
100+40.12	TO	106+21.00	JUNCTION AVE				1			490	70		390	960	3080	1550	
106+21.00	TO	110+03.18	JUNCTION AVE	0.01		1	7			120	50	559	730	1330	3700		
110+03.18	TO	114+25.00	JUNCTION AVE				3			520	60	80	850	1100	3120		
114+25.00	TO	123+00.00	JUNCTION AVE				2			540	160		470	1050	2150		
123+00.00	TO	131+00.00	JUNCTION AVE			1	5			420	30	42	290	850			
131+00.00	TO	140+79.49	ST MARIE ST				8	1		1360	150	74	1160	2740	6200	180	
10+69.00	TO	11+78.00	BAYVIEW AVE							30	10			330			(1)
140+79.49	TO	145+97.52	ST MARIE ST		2	1	11			160	10	638	1030	2340	3580	190	
145+97.52	TO	148+40.00	ST MARIE ST				1			50	40		140	150	1350	90	
PROJECT TOTALS				0.01	2	3	38	1		3690	580	1393	5060	10850	23180	2010	

(1) NON-PARTICIPATING

CONSTRUCTION ITEMS														B		
STATION	TO	STATION	ALIGNMENT	SPEC 2108	SPEC 2232	SPEC 2331	SPEC. 2357	SPEC. 2360			SPEC. 2504		SPEC. 2506		REMARKS	
				GEOTEXTILE FABRIC TYPE 5	MILL BITUMINOUS SURFACE (2.0")	JOINT ADHESIVE	BITUMINOUS MATERIAL FOR TACK COAT	TYPE SP 12.5 NON WEARING COURSE MIXTURE (3,C) 8" THICK	TYPE SP 9.5 WEARING COURSE MIXTURE (3,C)	TYPE SP 12.5 NON WEARING COURSE MIXTURE (3,C)	ADJUST VALVE BOX	CONCRETE ENCASED VALVE BOX COVER	ADJUST FRAME AND RING CASTING	CONCRETE ENCASED CASTING COLLAR		
				SQ YD	SQ YD	LIN FT	GALLON	SQ YD	TON	TON	EACH	EACH	EACH	EACH		
100+40.12	TO	106+21.00	JUNCTION AVE		2140	1300	210	1110	260					3		
106+21.00	TO	110+03.18	JUNCTION AVE	1880		820	130		160	240	2				2	
110+03.18	TO	114+25.00	JUNCTION AVE		1580	930	160	1100	190		3	2			2	
114+25.00	TO	123+00.00	JUNCTION AVE		3120	1930	310	1160	380		3	2			1	
123+00.00	TO	131+00.00	JUNCTION AVE		2920	1760	290	810	350		1	1			1	
131+00.00	TO	140+79.49	ST MARIE ST		3710	2160	370	2820	450		2				5	
10+69.00	TO	11+78.00	BAYVIEW AVE	490		220	30		70							(1)
140+79.49	TO	145+97.52	ST MARIE ST	2320		1140	220		270	400	2	2			4	
145+97.52	TO	148+40.00	ST MARIE ST		960	480	100	120	120		1					
PROJECT TOTALS				4690	14430	10740	1820	7120	2250	640	14	7	3	15		

(1) NON-PARTICIPATING

PLOT DATE: 3/20/2025 1:22:09 PM FILE: G:\24\Proj\240250\500 Drawings\Civil\240250_031_Charts.dwg

LHB PROJECT NO. 240250

I HEREBY CERTIFY that this plan, specification or report was prepared by me or under my direct supervision and that I am a duly Licensed Professional Engineer under the laws of the State of Minnesota.

BRAD REIFSTECK
PRINTED NAME

SIGNATURE

02/07/2025
DATE
47930
LIC. NO.

S.A.P. 118-156-013

CITY PROJECT 1464

JUNCTION AVE/ST. MARIE ST. RECONDITIONING

1 03/25/2025 ADDENDUM 01

CONSTRUCTION CHARTS

SHEET NO. 7 OF 89 SHEETS

ADA ITEMS

C

STATION TO STATION	ALIGNMENT	SPEC. 2521								SPEC. 2531										REMARKS	
		6" CONCRETE WALK	DRILL & GROUT REINF BAR (EPOXY COATED) (NO. 4 x 12" LONG REINFORCEMENT BARS)							CONCRETE CURB AND GUTTER DESIGN SPECIAL	CONCRETE CURB AND GUTTER DESIGN B624	CONCRETE CURB AND GUTTER DESIGN B636	CONCRETE CURB AND GUTTER DESIGN S524	CONCRETE CURB DESIGN V8 (MODIFIED)	7" CONCRETE DRIVEWAY PAVEMENT	8" CONCRETE DRIVEWAY PAVEMENT	TRUNCATED DOMES				
			SIDEWALK				QUADRANT										SQUARE				RADIAL
			LONGITUDINAL	TRANSVERSE	DRIVEWAY	END OF CURB TIE IN	BACK OF CURB	LANDING	MAINLINE								SIDE STREET	SQ FT	SQ FT		
SQ FT	EACH	EACH	EACH	EACH	EACH	EACH	LIN FT	LIN FT	LIN FT	LIN FT	LIN FT	SQ YD	SQ YD	SQ FT	SQ FT	SQ FT	RADIUS				
100+40.12 TO 106+21.00	JUNCTION AVE	4676	13		36	31	4			470					190			16	12.7		
106+21.00 TO 110+03.18	JUNCTION AVE	4400			10			20	35	140	660		94	150	56	48		40	15.0		
110+03.18 TO 114+25.00	JUNCTION AVE	5141			13	37	33	14			370		151		111	48	32	86	15.0	28 SF AT 14.0' R, 22 SF AT 15.3' R	
114+25.00 TO 123+00.00	JUNCTION AVE	3101		45		37	12	21			470					64					
123+00.00 TO 131+00.00	JUNCTION AVE	391		16		24					280										
131+00.00 TO 140+79.49	ST MARIE ST	14622		24	18	39	47	73			650		156		25	48	32	174	20.0	30 SF AT 19.3'R, 56 SF AT 15'R, 20SF AT 19'R, 20 SF AT 18'R	
10+69.00 TO 11+78.00	BAYVIEW AVE	524		4		4					190				33					(1)	
140+79.49 TO 145+97.52	ST MARIE ST	8363		3	12	53	37	65		1240		33	89		20		32		152	52 SF AT 13' R, 56 SF AT 18' R, 44 SF AT 12' R	
145+97.52 TO 148+40.00	ST MARIE ST	4030		8		12	8	4			50		70	77				36	15.3		
PROJECT SUB TOTALS		45248	13	100	89	237	161	212		1380	3140	103	567	150	20	415	240	64	504		
PROJECT TOTALS		45248			812					1380	3140	103	567	150	20	415	808				

(1) NON-PARTICIPATING

EARTHWORK, BASE, SUBBASE

D

STATION TO STATION	ALIGNMENT	SPEC 2106					SPEC 2211	SPEC 2451		REMARKS
		EXCAVATION - COMMON	EXCAVATION - SUBGRADE	SELECT GRANULAR EMBANKMENT MOD 7% (CV)	COMMON EMBANKMENT (CV)	HAUL & DISPOSE OF CONTAMINATED MATERIALS	AGGREGATE BASE (CV) CLASS 5	GRANULAR BACKFILL (CV)	COARSE AGGREGATE BEDDING (CV)	
		CU YD	CU YD	CU YD	CU YD	CU YD	CU YD	CU YD	CU YD	
100+40.12 TO 106+21.00	JUNCTION AVE	100						10		
106+21.00 TO 110+03.18	JUNCTION AVE	440	1640	880	760	200	560	790	130	
110+03.18 TO 114+25.00	JUNCTION AVE	60						170	30	
114+25.00 TO 123+00.00	JUNCTION AVE	50						50	10	
123+00.00 TO 131+00.00	JUNCTION AVE	30						110	20	
131+00.00 TO 140+79.49	ST MARIE ST	80						250	40	
10+69.00 TO 11+78.00	BAYVIEW AVE	120	150	150			100			(1)
140+79.49 TO 145+97.52	ST MARIE ST	690	2000	1220	780		770	880	150	
145+97.52 TO 148+40.00	ST MARIE ST	30						50	10	
PROJECT TOTALS		1600	3790	2250	1540	200	1430	2310	390	

(1) NON-PARTICIPATING

LHB PROJECT NO. 240250

I HEREBY CERTIFY that this plan, specification or report was prepared by me or under my direct supervision and that I am a duly Licensed Professional Engineer under the laws of the State of Minnesota.

BRAD REIFSTECK
PRINTED NAME

SIGNATURE

02/07/2025
DATE
47930
LIC. NO.

S.A.P. 118-156-013
CITY PROJECT 1464

JUNCTION AVE/ST. MARIE ST. RECONDITIONING

1	03/25/2025	ADDENDUM 01
CONSTRUCTION CHARTS		
SHEET NO. 8 OF 89 SHEETS		

PLOT DATE: 3/20/2025 1:23:00 PM FILE: G:\24Proj\240250\500 Drawings\Civil\240250_031_Charts.dwg

STORM SEWERS – PIPES, MANHOLES, AND CATCH BASINS (1 OF 3)

X

STRUCTURE NUMBER	STATION	LOCATION	RIM ELEV	UP-STREAM INVERT ELEV	4" PERF TP PIPE (MOD)	GEOTEXTILE FILTER TYPE 4	RANDOM RIPRAP CLASS III	CONSTRUCT DRAINAGE STRUCTURE DESIGN					STORM CASTING TYPE	CASTING ASSEMBLY	RC PIPE SEWER DES 3006 CLASS III					RC PIPE APRON			CONCRETE ENCASED CASTING COLLAR	CONNECT TO EXISTING STORM SEWER	CONNECT INTO EXISTING DRAINAGE STRUCTURE	12" STORM SEWER LINING (CIPP)	15" STORM SEWER LINING (CIPP)	PIPE NUMBER	DRAINS TO	DOWN-STREAM INVERT ELEV	GRADE %	COMMENTS		
								②							12"	15"	18"	24"	30"	12"	24"	30"												
								H	G	48-4020	60-4020	SPECIAL			2506	2506	2503	2503	2503	2506	2503	2503											2503	2503
LIN FT	SQ YD	CU YD	EACH	EACH	LIN FT	LIN FT	LIN FT	LIN FT	LIN FT	EACH	LIN FT	LIN FT	LIN FT	LIN FT	LIN FT	EACH	EACH	EACH	EACH	EACH	EACH	LIN FT	LIN FT											
ALIGNMENT: JUNCTION AVE – ST MARIE ST																																		
PCB-101	101+22.42	17.24 RT	1131.48	1128.23				1				STRM-3	6													1		99		P-101	L-101	1128.12	1.87%	(3)(4)
PCB-203	106+26.00	17.13 RT	1129.23	1125.23				1				STRM-3	19																P-203	PCB-205	1125.09	0.72%		
PCB-210	107+90.58	16.90 LT	1132.69	1129.66				1				STRM-3	77																P-210	PCB-208	1125.00	6.01%		
PCB-204	106+49.99	17.00 LT	1129.20	1125.43					1			STRM-2	31																P-204	PCB-205	1125.09	1.10%		
PCB-204A	106+34.99	17.00 LT	1129.21	1125.68				1				STRM-2	15																P-204A	PCB-204	1125.53	1.00%		
PCB-205	106+45.09	13.65 RT	1128.77	1124.99								STRM-3	1	14															P-205	PMH-202	1124.89	0.73%		
ST0750064	106+88.88	43.13 LT	1129.78	1122.72																														
PCB-208	107+13.10	17.00 LT	1130.17	1122.25								STRM-3	1																P-208A	PCB-208	1122.35	1.04%	(3)	
PCB-207	107+13.10	15.74 RT	1129.96	1121.82								STRM-3	1																P-208	PCB-207	1121.92	1.01%	(3)(4)	
PCB-214	109+91.78	17.00 LT	1146.30	1142.86								STRM-3	1																P-207	PMH-206	1121.76	0.99%		
PCB-213	109+91.78	17.03 RT	1146.30	1142.76								STRM-3	27																P-214	PMH-212	1142.50	1.31%		
PMH-212	109+87.18	10.07 RT	1146.15	1138.80								STRM-3	8																P-213	PMH-212	1142.70	0.72%		
PMH-215	109+72.50	10.00 RT	1145.08	1138.70								STRM-3	1	15															P-212A	PMH-215	1138.70	0.68%		
PMH-212	109+87.18	10.07 RT	1146.15	1140.40								STRM-1	1	12															P-215	PMH-211	1138.47	1.87%		
PMH-211	109+77.08	21.37 RT	1145.71	1136.10	264							STRM-1	1																P-212	PMH-211	1139.79	4.02%	(3)(4)	
PMH-206	107+12.71	21.80 RT	1130.46	1121.66	57							STRM-1	1																P-211	PMH-206	1122.87	5.00%		
PMH-202	106+55.69	22.23 RT	1129.90	1120.99		35.2						STRM-1	1																P-206	PMH-202	1121.09	1.00%		
PCB-301	112+83.24	35.33 LT	1167.38	1164.23								STRM-1	1																P-202	APR-201	1120.51	1.01%		
PCB-302	113+09.06	35.35 LT	1169.04	1163.85								STRM-3	26																	P-301	PCB-302	1164.10	0.50%	
PMH-304	112+97.67	10.24 RT	1168.32	1163.05								STRM-3	1	12	47														P-302	PMH-304	1163.49	0.77%	(3)(5)	
PCB-305	113+33.77	16.90 LT	1170.82	1166.66								STRM-1	1																E-304	EX-STORM			(3)(4)	
PCB-306	113+33.77	10.18 RT	1170.97	1164.72								STRM-3	1																P-304	PCB-306	1166.39	1.00%		
PCB-402	115+98.55	16.87 LT	1188.67	1184.97								STRM-3	1																P-305	PCB-306	1163.49	3.41%	(3)(4)	
PCB-403	115+98.21	17.00 RT	1188.59	1184.90								STRM-3	27																P-306	PMH-304	1163.49	3.41%	(3)(4)	
PMH-401	115+87.10	8.94 RT	1188.34	1183.22								STRM-3	1																P-306	PMH-304	1163.49	3.41%	(3)(4)	
PCB-402	115+98.55	16.87 LT	1188.67	1184.97								STRM-3	28																P-402	PMH-401	1184.83	0.50%		
PCB-403	115+98.21	17.00 RT	1188.59	1184.90								STRM-3	14																P-403	PMH-401	1184.83	0.52%		
PMH-401	115+87.10	8.94 RT	1188.34	1183.22								STRM-1	1																E-104				(3)(5)	
CHART TOTAL (THIS SHEET)					321	35	12	10	1	96.3	10.4		12	331.0	47.0	129.0	291.0	93.0	1		1	4	8	1	99.0									

KEY NOTES:

- ① CASTING ASSEMBLIES FOR STRUCTURE PAID FOR BY THE EACH ARE INCIDENTAL.
- ② PAY HEIGHT=(TOP OF CASTING-INVERT)-CASTING HEIGHT+0.70 FOR BASE BASE IS TO BE PAID AT 0.70' REGARDLESS OF ACTUAL THICKNESS.
- ③ FIELD VERIFY INVERT AND LOCATION OF EXISTING STORM SEWER.
- ④ 6 LF OF STORM SEWER WAS ADDED TO FACILITATE PIPE CONNECTION.
- ⑤ 12 LF OF STORM SEWER WAS ADDED TO FACILITATE PIPE CONNECTION.
- ⑥ PAID FOR UNDER ANOTHER ITEM.
- ⑦ INCLUDES 4 FOOT SUMP. INCLUDES SNOUT AND SAFL BAFFLE.
- ⑧ INCLUDES 4 FOOT SUMP. INCLUDES SNOUT.

LHB PROJECT NO. 240250

I HEREBY CERTIFY that this plan, specification or report was prepared by me or under my direct supervision and that I am a duly Licensed Professional Engineer under the laws of the State of Minnesota.

BRAD REIFSTECK
PRINTED NAME

SIGNATURE

02/07/2025
DATE
47930
LIC. NO.

S.A.P. 118-156-013

CITY PROJECT 1464

JUNCTION AVE/ST. MARIE ST. RECONDITIONING

1 03/25/2025 ADDENDUM 01

CONSTRUCTION CHARTS

SHEET NO. 15 OF 89 SHEETS

STORM SEWERS – PIPES, MANHOLES, AND CATCH BASINS (3 OF 3)

X

STRUCTURE NUMBER	STATION	LOCATION	RIM ELEV	UP-STREAM INVERT ELEV	4" PERF TP PIPE (MOD)	GEOTEXTILE FILTER TYPE 4	RANDOM RIPRAP CLASS III	CONSTRUCT DRAINAGE STRUCTURE DESIGN (2)					STORM CASTING TYPE (1)	CASTING ASSEMBLY	RC PIPE SEWER DES 3006 CLASS III					RC PIPE APRON			CONCRETE ENCASED CASTING COLLAR	CONNECT TO EXISTING STORM SEWER	CONNECT INTO EXISTING DRAINAGE STRUCTURE	12" STORM SEWER LINING (CIPP)	15" STORM SEWER LINING (CIPP)	PIPE NUMBER	DRAINS TO	DOWN-STREAM INVERT ELEV	GRADE %	COMMENTS			
								H	G	48-4020	60-4020	SPECIAL			12"	15"	18"	24"	30"	12"	24"	30"											EACH	EACH	EACH
								2502	2511	2511	2506				2506	2503			2503			2506											2503	2503	2503
					LIN FT	SQ YD	CU YD	EACH	EACH	LIN FT	LIN FT	LIN FT	LIN FT	LIN FT	EACH	EACH	EACH	EACH	EACH	EACH	LIN FT	LIN FT			ELEV	%									
ALIGNMENT: JUNCTION AVE – ST MARIE ST																																			
PCB-1010	145+16.44	35.54 LT	1092.37	1089.04				1				STRM-3	24															P-1010	PCB-1011	1088.84	0.84%				
PCB-1011	144+92.69	35.58 LT	1093.64	1088.74					1			STRM-3	29															P-1011	PCB-1012	1088.56	0.62%				
PCB-1012	144+68.42	19.68 LT	1094.39	1088.46					1			STRM-3	31															P-1012	PMH-1013	1088.19	0.86%				
PMH-1013	144+84.68	7.14 RT	1094.05	1088.46	39							STRM-1															P-1013	PMH-1015	1086.84	1.34%					
PMH-1006	140+96.86	7.34 RT	1108.28	1102.70	275						5.61	STRM-1	1			6	275										P-1006	PMH-1009	1093.21	3.45%	(3)(4)				
PMH-1009	143+71.57	6.88 RT	1098.49	1093.11	113						5.41	STRM-1	1				113										P-1009	PMH-1013	1088.19	4.35%					
PMH-1013	144+84.68	7.14 RT	1094.05	1087.50	9						6.58	STRM-1	1	9													P-1013A	PMH-1016	1087.30	2.26%					
PMH-1016	144+84.62	15.86 RT	1093.88	1087.30	38						10.61 (7)	STRM-1	1	38													P-1016	PMH-1015	1086.84	1.21%					
PMH-1015	145+22.81	16.23 RT	1092.45	1086.74		33.4	9.2				5.74	STRM-1	1				54										P-1015	APR-1017	1086.02	1.23%					
PCB-1101	147+77.39	19.48 RT	1087.09	1084.04					1			STRM-3	46														P-1101	PMH-1102	1083.81	0.50%					
PMH-1102	148+23.42	19.75 RT	1086.55	1083.71							2.87	STRM-1	1	6														E-1102			(3)(4)				
CHART TOTAL (THIS SHEET)					474	33	9	2	2	20.6	5.6	10.6	6	183.0	6.0	481.0	1	5	2	1	1	15	25	1	1	450									
PROJECT TOTALS					948	67	22	27	5	162.7	11.7	21.0	27	979	102	153	772	93	2	1	1	15	25	1	1	450									

KEY NOTES:

- (1) CASTING ASSEMBLIES FOR STRUCTURE PAID FOR BY THE EACH ARE INCIDENTAL.
- (2) PAY HEIGHT=(TOP OF CASTING-INVERT)-CASTING HEIGHT+0.70 FOR BASE IS TO BE PAID AT 0.70' REGARDLESS OF ACTUAL THICKNESS.
- (3) FIELD VERIFY INVERT AND LOCATION OF EXISTING STORM SEWER.
- (4) 6 LF OF STORM SEWER WAS ADDED TO FACILITATE PIPE CONNECTION.
- (5) 12 LF OF STORM SEWER WAS ADDED TO FACILITATE PIPE CONNECTION.
- (6) PAID FOR UNDER ANOTHER ITEM.
- (7) INCLUDES 4 FOOT SUMP. INCLUDES SNOUT AND SAFL BAFFLE.
- (8) INCLUDES 4 FOOT SUMP. INCLUDES SNOUT.

CASTING ASSEMBLIES										XX
CASTING	STRM-1		STRM-2			STRM-3				
TYPE OF ASSEMBLY	STORM MH		STORM CB			STORM CB				
CASTING DESCRIPTION	FRAME	LID	FRAME	GRATE	BOX	FRAME	GRATE			
DULUTH PLATE NUMBER	STRM-1		STRM-2			STRM-3				
MNDOT PLATE NUMBER										
HEIGHT IN FEET	0.67'	NA	0.74	NA	NA	0.74'	NA			
PROJECT TOTALS	20		2			38				

PLOT DATE: 3/20/2025 2:27:21 PM FILE: G:\44\Proj\1240250\500_Drainings\Civil\240250_03.2_Charts.dwg

LHB PROJECT NO. 240250

I HEREBY CERTIFY that this plan, specification or report was prepared by me or under my direct supervision and that I am a duly Licensed Professional Engineer under the laws of the State of Minnesota.

BRAD REIFSTECK
PRINTED NAME

SIGNATURE

02/07/2025
DATE
47930
LIC. NO.

S.A.P. 118-156-013

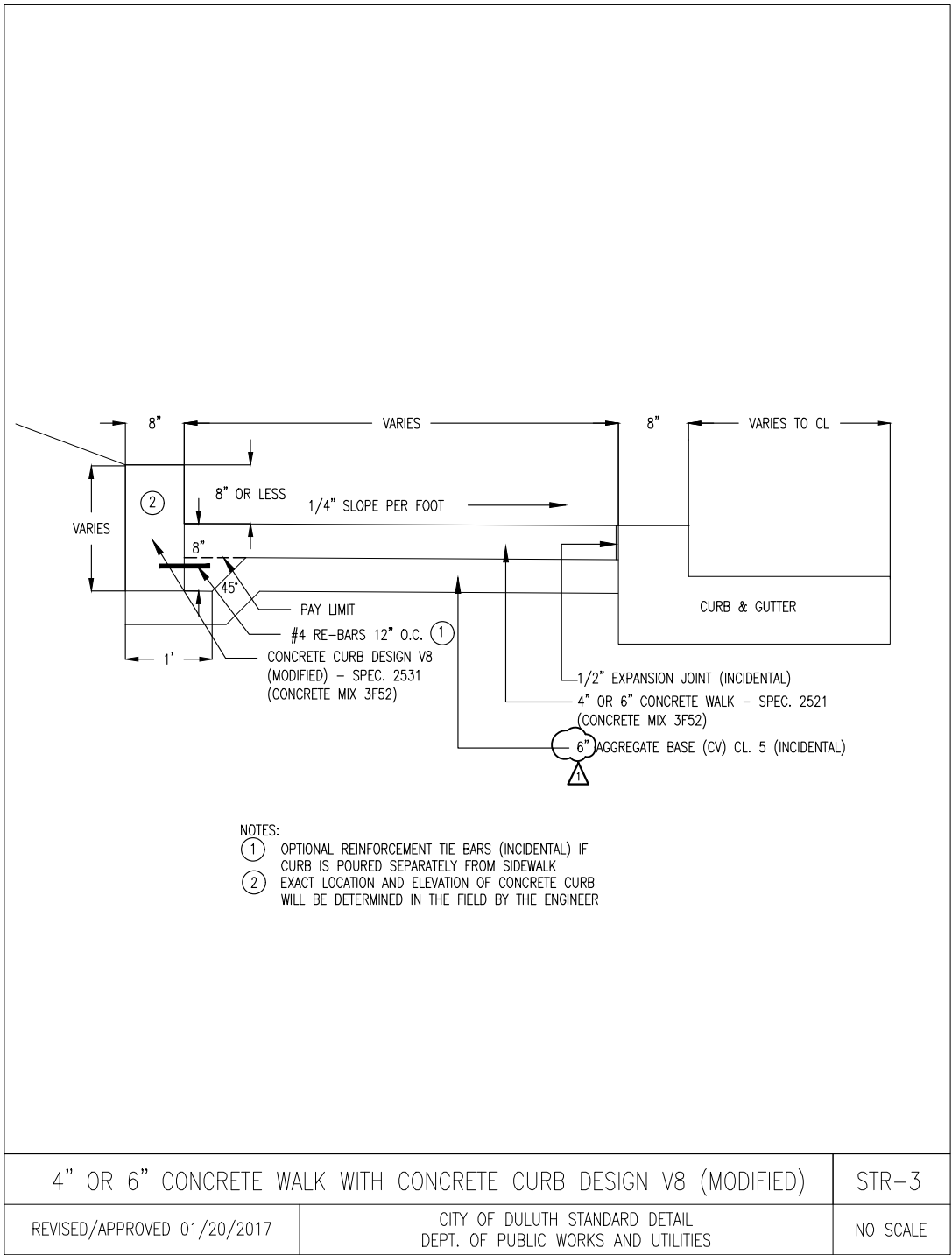
CITY PROJECT 1464

JUNCTION AVE/ST. MARIE ST. RECONDITIONING

1 | 03/25/2025 | ADDENDUM 01

CONSTRUCTION CHARTS

SHEET NO. 17 OF 89 SHEETS



- NOTES:
- ① OPTIONAL REINFORCEMENT TIE BARS (INCIDENTAL) IF CURB IS POURED SEPARATELY FROM SIDEWALK
 - ② EXACT LOCATION AND ELEVATION OF CONCRETE CURB WILL BE DETERMINED IN THE FIELD BY THE ENGINEER

PLOT DATE: 3/19/2025 12:41:13 PM FILE: G:\24Pra\240250\500 Drawings\Civil\240250_05.1 Construction Details.dwg

LHB PROJECT NO. 240250

I HEREBY CERTIFY that this plan, specification or report was prepared by me or under my direct supervision and that I am a duly Licensed Professional Engineer under the laws of the State of Minnesota.

BRAD REIFSTECK
PRINTED NAME

SIGNATURE

02/07/2025
DATE
47930
LIC. NO.

S.A.P. 118-156-013

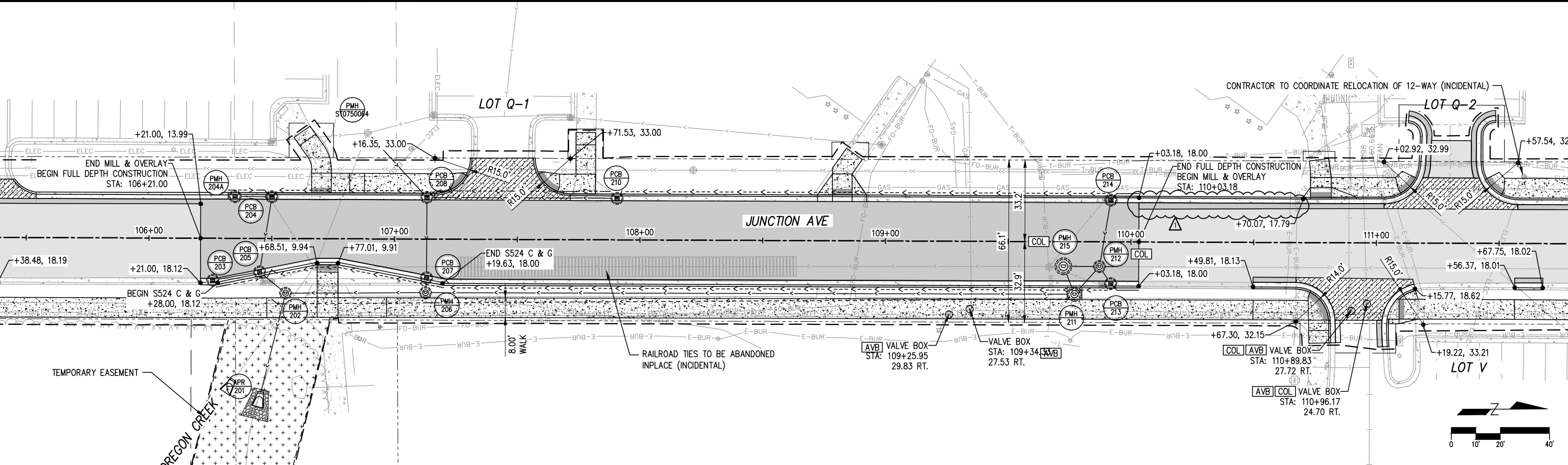
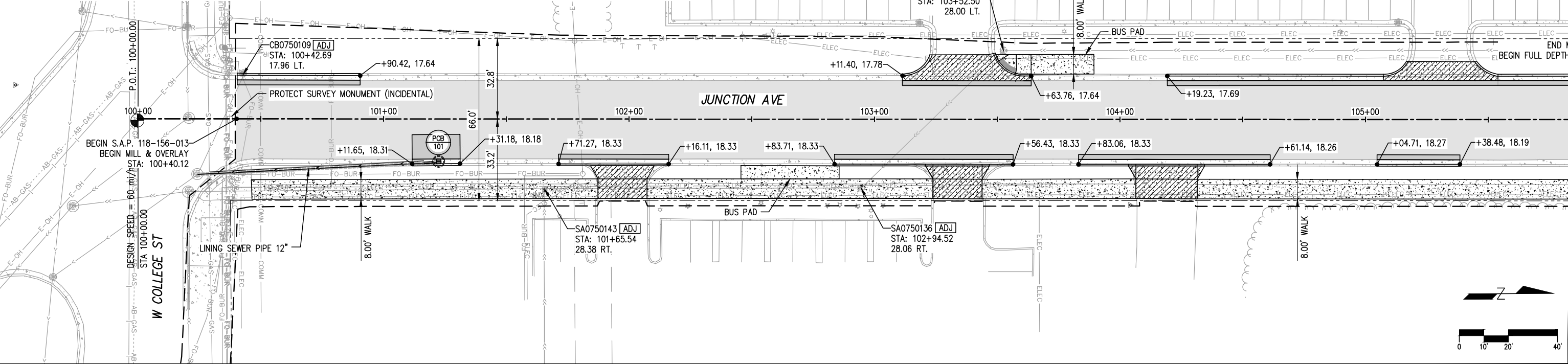
CITY PROJECT 1464

JUNCTION AVE/ST. MARIE ST. RECONDITIONING

1	03/25/2025	ADDENDUM 01
CONSTRUCTION DETAILS		
SHEET NO. 30 OF 89 SHEETS		

LEGEND

- CONSTRUCTION LIMITS
- - - EXISTING RIGHT OF WAY
- ▬ BITUMINOUS OVERLAY
- ▨ 6" CONCRETE WALK
- ▩ 8" CONCRETE DRIVEWAY PAVEMENT
- ▧ 7" CONCRETE DRIVEWAY PAVEMENT
- ▭ CONCRETE CURB & GUTTER
- ▨ TURF ESTABLISHMENT
- ▩ AGGREGATE SURFACING (CV) CLASS 5
- ▧ FULL DEPTH RECONSTRUCTION
- LINING SEWER PIPE
- TEMPORARY EASEMENT
- ⊙ DRAINAGE MANHOLE OR CATCH BASIN
- ADJ ADJUST FRAME & RING CASTING (SEE CHART B)
- AVB ADJUST VALVE BOX (SEE CHART B)
- COL CONCRETE ENCASED CASTING COLLAR
- 4" PERFORATED TP PIPE DRAIN (MODIFIED)
- 4" PERFORATED PVC PIPE DRAIN
- RC PIPE SEWER



LHB PROJECT NO. 240250

I HEREBY CERTIFY that this plan, specification or report was prepared by me or under my direct supervision and that I am a duly Licensed Professional Engineer under the laws of the State of Minnesota.

BRAD REIFSTECK
PRINTED NAME

SIGNATURE

02/07/2025
DATE

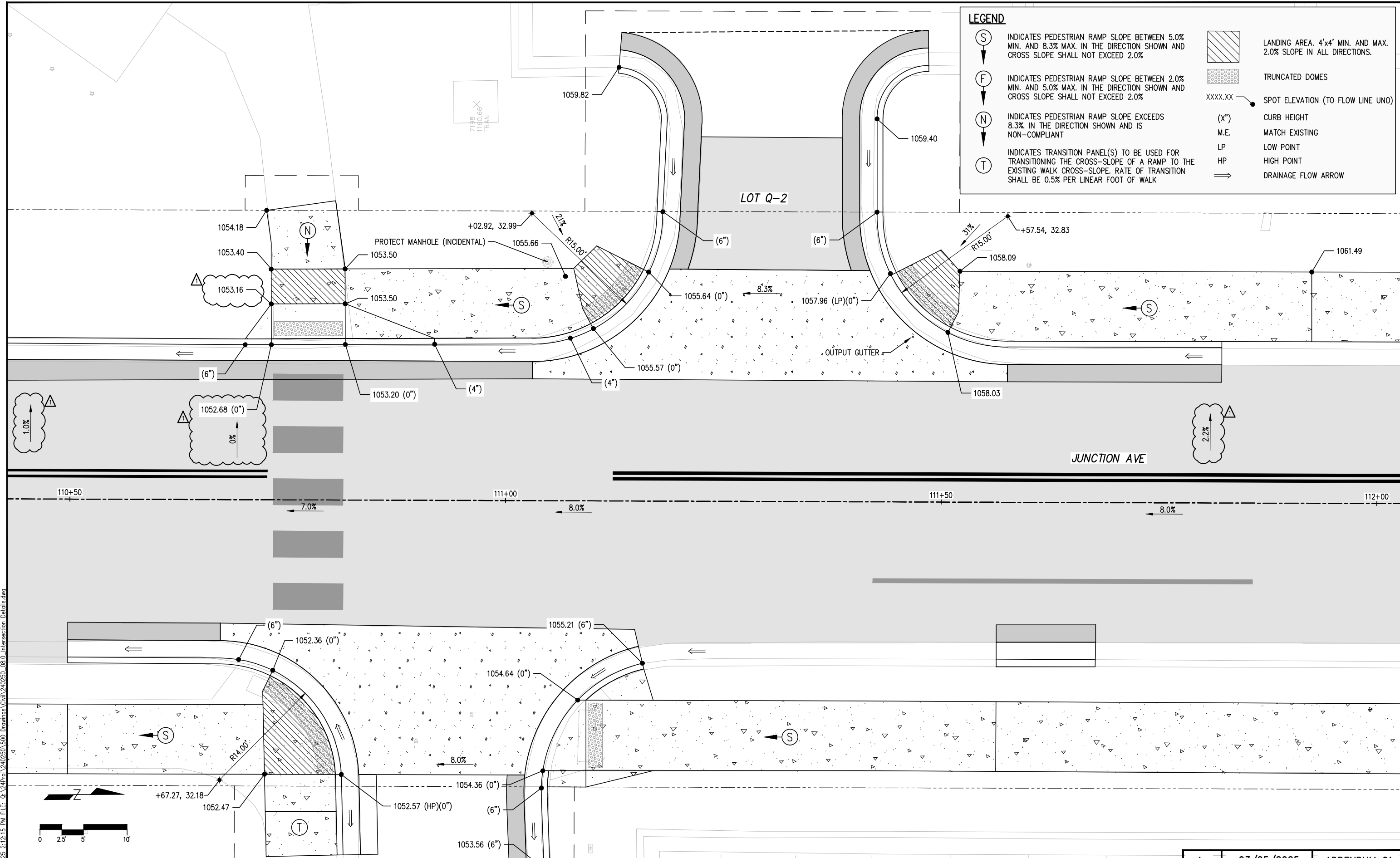
47930
LIC. NO.

S.A.P. 118-156-013

CITY PROJECT 1464

JUNCTION AVE/ST. MARIE ST. RECONDITIONING

1	03/25/2025	ADDENDUM 01
CONSTRUCTION PLAN		
SHEET NO. 57 OF 89 SHEETS		



PLOT DATE: 3/20/2025 2:12:15 PM FILE: Q:\24250\240250\500 Drawings\Civil\240250_08_0 Intersection Details.dwg

LHB PROJECT NO. 240250

I HEREBY CERTIFY that this plan, specification or report was prepared by me or under my direct supervision and that I am a duly Licensed Professional Engineer under the laws of the State of Minnesota.

BRAD REIFSTECK
 PRINTED NAME

 SIGNATURE

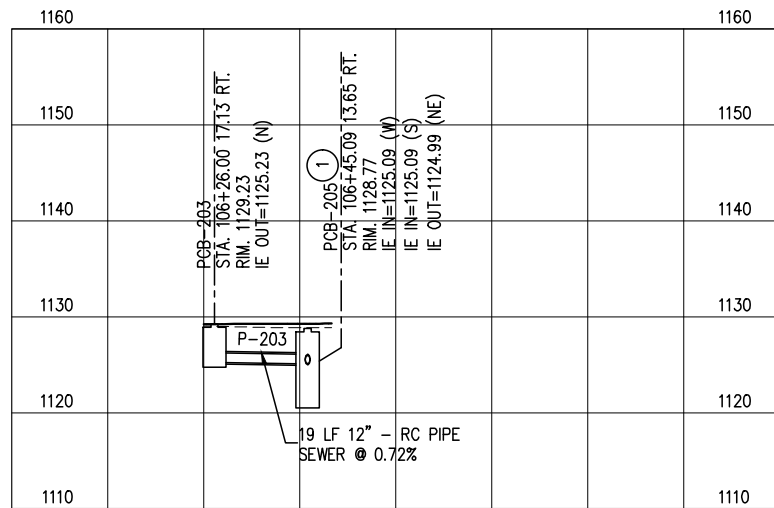
02/07/2025
 DATE
 47930
 LIC. NO.

S.A.P. 118-156-013
 CITY PROJECT 1464

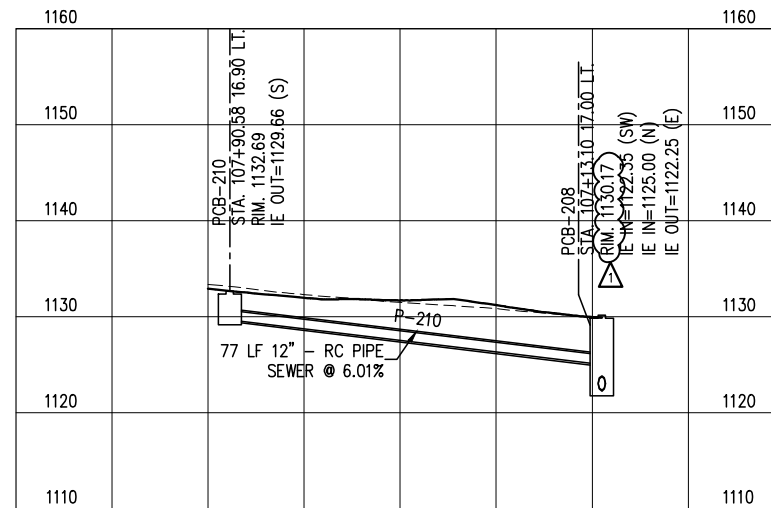
JUNCTION AVE/ST. MARIE ST. RECONDITIONING

1	03/25/2025	ADDENDUM 01
INTERSECTION DETAILS		
SHEET NO. 68 OF 89 SHEETS		

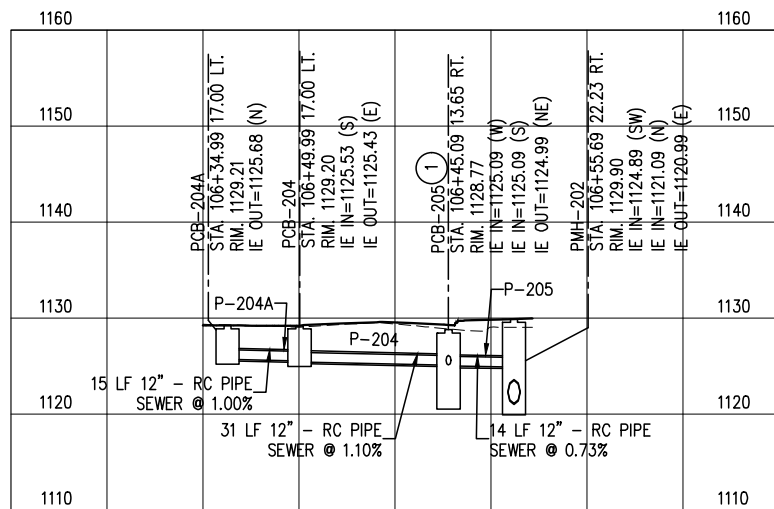
PLOT DATE: 3/20/2025 2:22:26 PM FILE: Q:\24\Proj\240250\Drawings\Civil\240250_09.0_Storm_Profiles.dwg



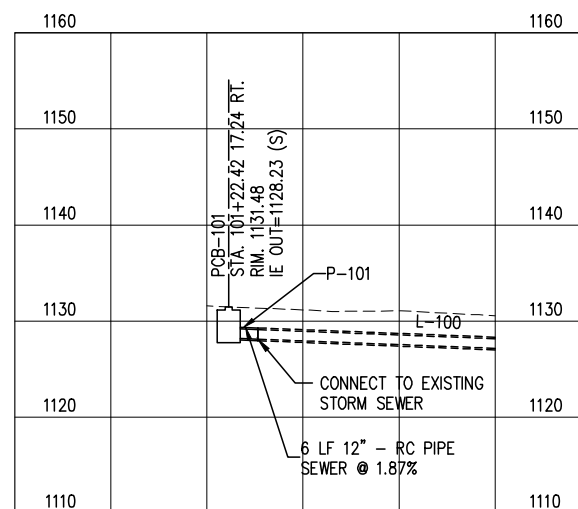
PCB-203 TO PCB-205



PCB-210 TO PCB-208



PCB-204A TO PMH-202



PCB-101 TO EX STORM

KEY NOTES:

- ① WATER QUALITY STRUCTURE. SEE DETAIL SHEET 22.

LHB PROJECT NO. 240250

I HEREBY CERTIFY that this plan, specification or report was prepared by me or under my direct supervision and that I am a duly Licensed Professional Engineer under the laws of the State of Minnesota.

BRAD REIFSTECK
PRINTED NAME

SIGNATURE

02/07/2025
DATE
47930
LIC. NO.

S.A.P. 118-156-013

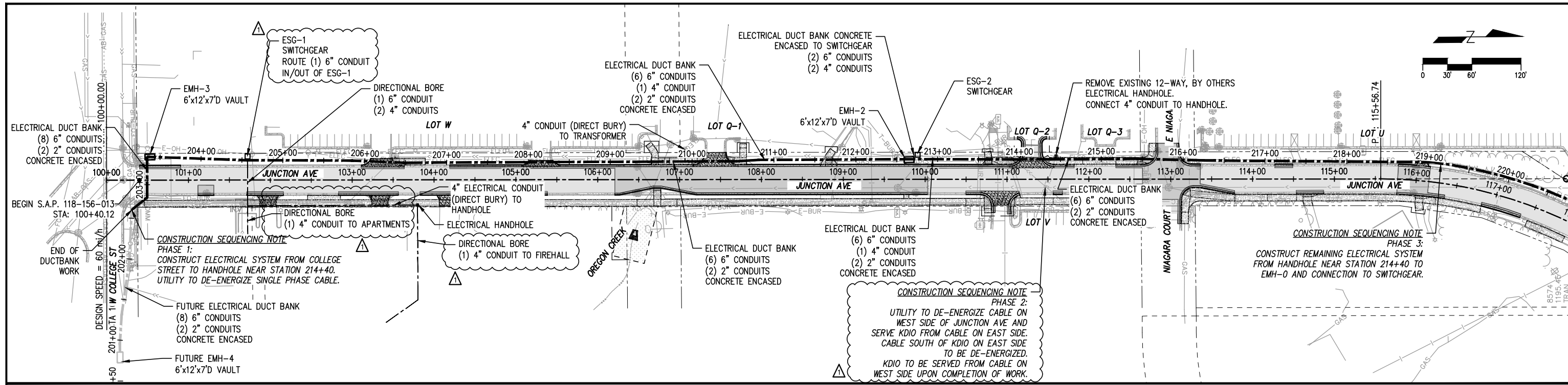
CITY PROJECT 1464

JUNCTION AVE/ST. MARIE ST. RECONDITIONING

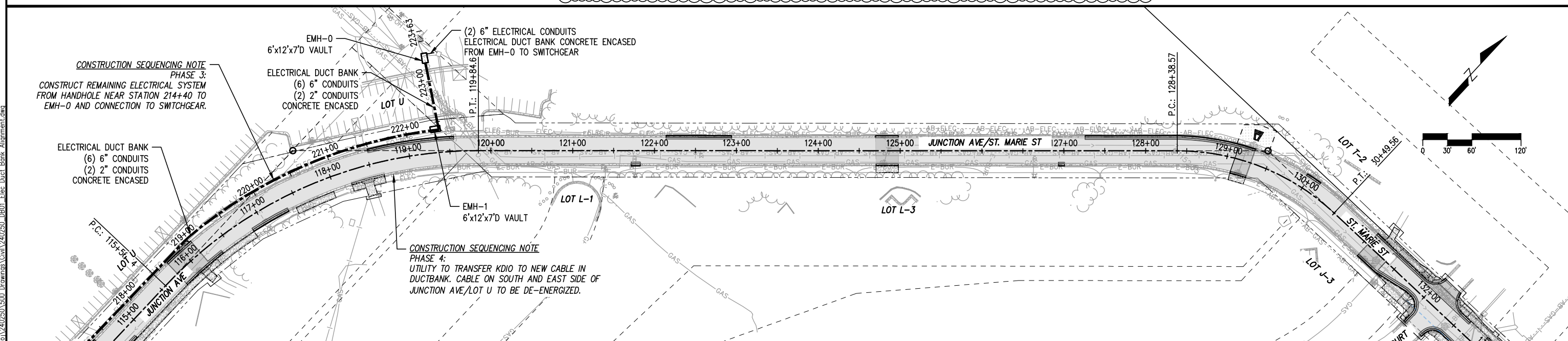
1	03/25/2025	ADDENDUM 01
---	------------	-------------

PROPOSED STORM PROFILES

SHEET NO. 77 OF 89 SHEETS



- NOTES:**
1. CONTRACTOR MUST COORDINATE WORK AROUND/RELOCATION OF EXISTING UTILITIES TO COMPLETE THE WORK. COORDINATION AND RELOCATION ARE INCIDENTAL TO PAY ITEM 2550.601 ELECTRICAL SERVICE.
 2. CONTRACTOR IS RESPONSIBLE FOR FIELD LOCATING ALL EXISTING UTILITIES BEFORE COMMENCING WORK. LOCATING EXISTING UTILITIES IS INCIDENTAL TO PAY ITEM 2550.601 ELECTRICAL SERVICE.
 3. THE FINAL DUCT BANK ALIGNMENT IS EXPECTED TO CHANGE FROM THE PLAN ALIGNMENT BASED UPON FIELD CONDITIONS, UTILITY CONFLICTS AND THE NEED TO MINIMIZE CURB AND GUTTER REMOVALS. CONTRACTOR MAY SUBMIT IN WRITING A REQUEST TO ALTER THE DUCT BANK PLAN AND/OR PROFILE AS NEEDED TO AVOID EXISTING UTILITIES. ANY ADDITIONAL ITEMS OR MATERIALS REQUIRED FOR THE REQUESTED CHANGE WILL BE PROCESSED THROUGH A CHANGE ORDER WITH THE OWNER.
 4. ALL STREET OR PARKING LOT PAVEMENTS, CURBS, AND SIDEWALKS SHALL BE REMOVED AND REPLACED TO PRE-EXISTING THICKNESS OR TYPES USING THE BITUMINOUS MIX AND AGGREGATE BASE SHOWN FOR CURB REPLACEMENT OR PATCHING ON SHEET 20.
 5. ALL WORK SHOWN ON SHEETS DB01 TO DB14 ARE PAID FOR UNDER LUMP SUM BID ITEM 2550.601 ELECTRICAL SERVICE AND ARE CONSIDERED NON-PARTICIPATING ITEMS.



LHB PROJECT NO. 240250/240771

I HEREBY CERTIFY that this plan, specification or report was prepared by me or under my direct supervision and that I am a duly Licensed Professional Engineer under the laws of the State of Minnesota.

DAVID POLSON
PRINTED NAME

David Polson
SIGNATURE

02/07/2025
DATE
57246
LIC. NO.

NON-PARTICIPATING
S.A.P. 118-156-013
CITY PROJECT 1464

JUNCTION AVE/ST. MARIE ST. RECONDITIONING

1	03/25/2025	ADDENDUM 01
DUCT BANK ALIGNMENT		
SHEET NO. DB01 OF DB14 SHEETS		

①② ELECTRICAL DUCT BANK															DB	
STATION	TO	STATION	ALIGNMENT	ELECTRICAL	ELECTRICAL	ELECTRICAL	ELECTRICAL	ELECTRICAL	ELECTRICAL	ELECTRICAL	ELECTRICAL	ELECTRICAL	(-) * NON-	(-) * NON-	REMARKS	
				MANHOLE	HANDHOLE	SWITCHGEAR	DUCT	DUCT	DUCT	DUCT	DUCT	DUCT	DUCT	DUCT		METALLIC CONDUIT
				2550	2550	2550	2550	2550	2550	2550	2550	2550	2550	2550		
				EACH	EACH	EACH	LIN FT	LIN FT	LIN FT	LIN FT	LIN FT	LIN FT	LIN FT	LIN FT		
200+79.00	TO	203+35.83	DUCT BANK	1									76			
203+35.83	TO	209+07.26	DUCT BANK		1	1	297						286	208		
209+07.26	TO	210+69.05	DUCT BANK					274						14		
210+69.05	TO	212+64.68	DUCT BANK	1		1	196									
212+64.68	TO	213+77.47	DUCT BANK									180		2		
213+77.47	TO	213+95.10	DUCT BANK					11								
213+95.10	TO	215+63.06	DUCT BANK		1						118					
215+63.06	TO	216+01.65	DUCT BANK						39							
216+01.65	TO	222+40.42	DUCT BANK	1							638					
222+40.42	TO	223+30.92	DUCT BANK	1							91			9		
PROJECT TOTALS				4	2	2	493	274	11	39	847	180	76	286	233	PROJECT TOTALS

- ① ALL ITEMS LISTED SHALL NOT BE PAID SEPARATELY BUT SHALL BE INCLUDED FOR PAYMENT UNDER LUMP SUM BID ITEM 2550.601 ELECTRICAL SERVICE
- ② THE REMOVAL AND REPLACEMENT OF ALL PAVEMENTS, CURBS, AND SIDEWALKS FOR DUCT BANK WORK AND NOT ALREADY SHOWN ON SHEETS 52 TO 56 SHALL NOT BE MEASURED SEPARATELY BUT SHALL BE INCLUDED FOR PAYMENT UNDER LUMP SUM BID ITEM 2550.601 ELECTRICAL SERVICE.

PLOT DATE: 3/19/2025 1:16:37 PM FILE: Q:\24Proj\240250\500 Drawings\Civil\240250_DB02_Duct Bank_Charts.dwg

LHB PROJECT NO. 240250/240771

I HEREBY CERTIFY that this plan, specification or report was prepared by me or under my direct supervision and that I am a duly Licensed Professional Engineer under the laws of the State of Minnesota.

DAVID POLSON
PRINTED NAME

David Polson
SIGNATURE

02/07/2025
DATE
57246
LIC. NO.

NON-PARTICIPATING

S.A.P. 118-156-013

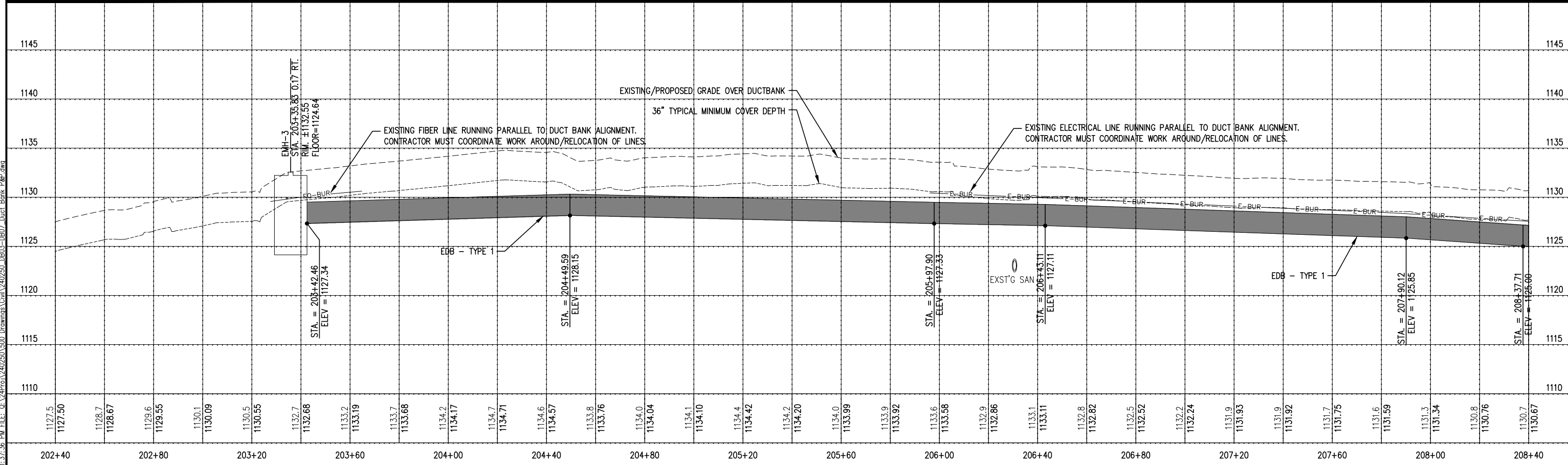
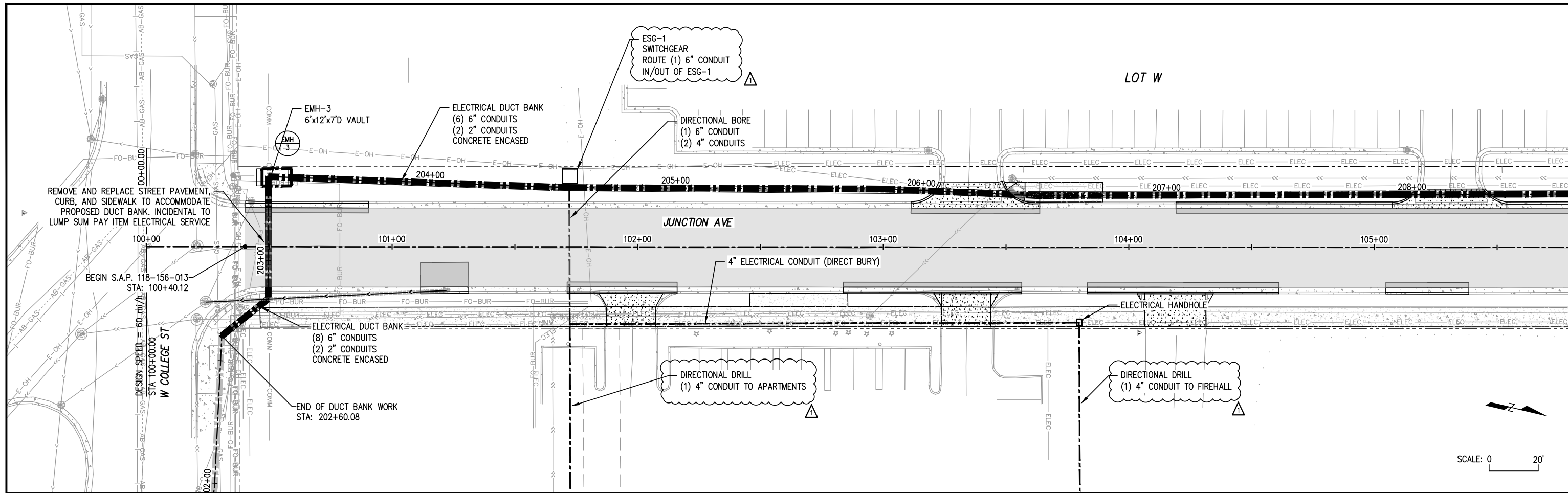
CITY PROJECT 1464

JUNCTION AVE/ST. MARIE ST. RECONDITIONING

1 03/25/2025 ADDENDUM 01

CONSTRUCTION CHARTS

SHEET NO. DB02 OF DB14 SHEETS



LHB PROJECT NO. 240250/240771

I HEREBY CERTIFY that this plan, specification or report was prepared by me or under my direct supervision and that I am a duly Licensed Professional Engineer under the laws of the State of Minnesota.

DAVID POLSON
PRINTED NAME

David Polson
SIGNATURE

02/07/2025
DATE
57246
LIC. NO.

NON-PARTICIPATING

S.A.P. 118-156-013

CITY PROJECT 1464

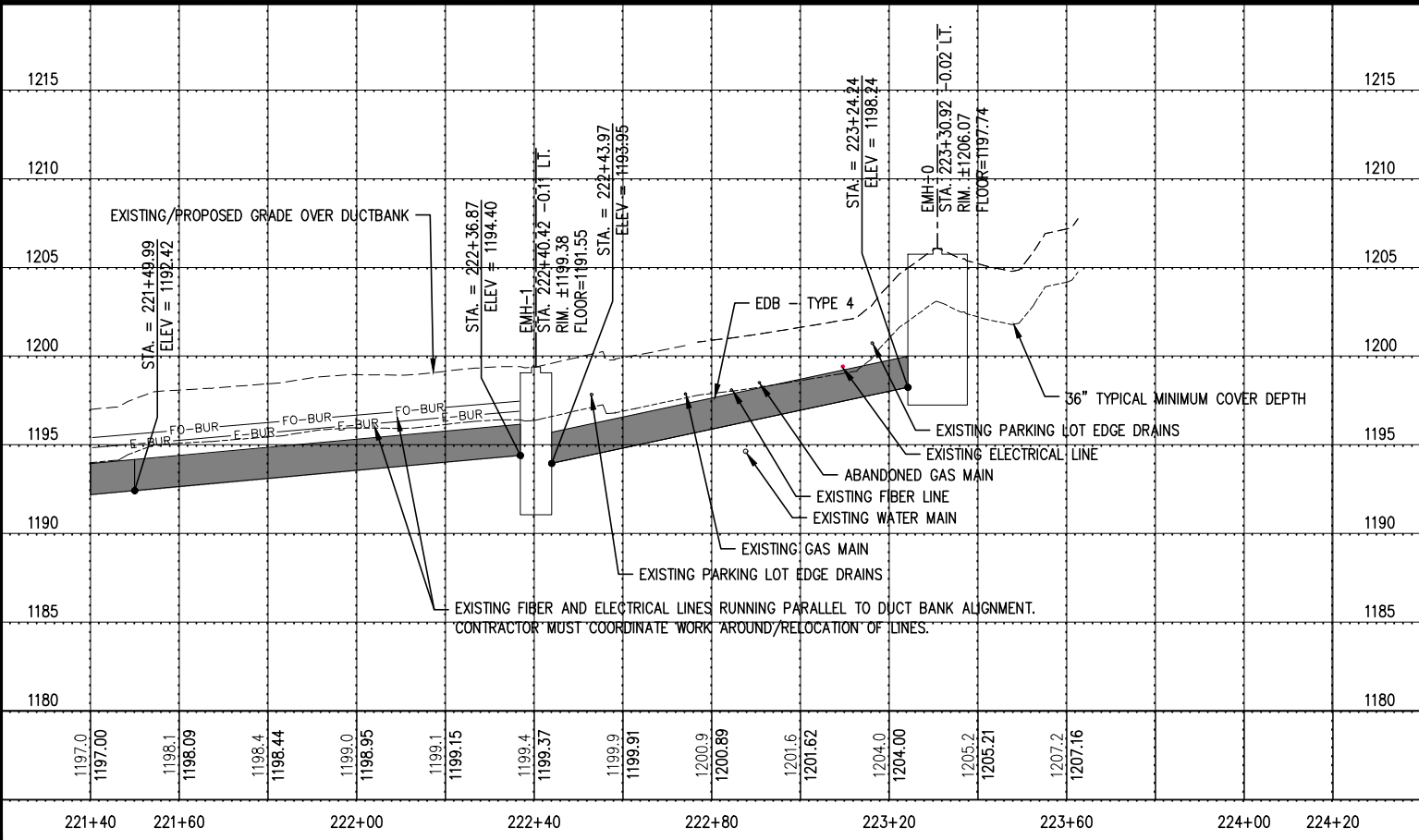
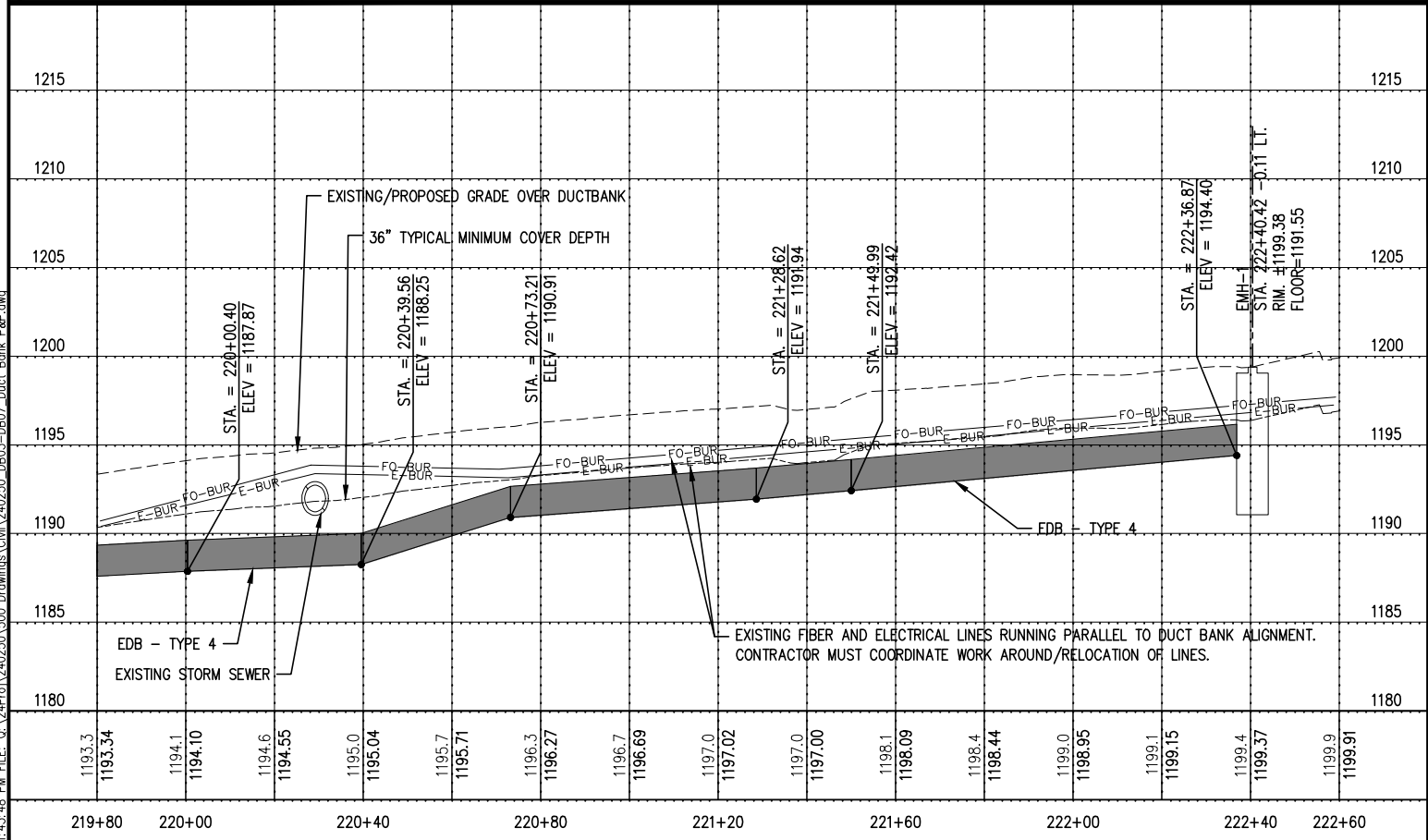
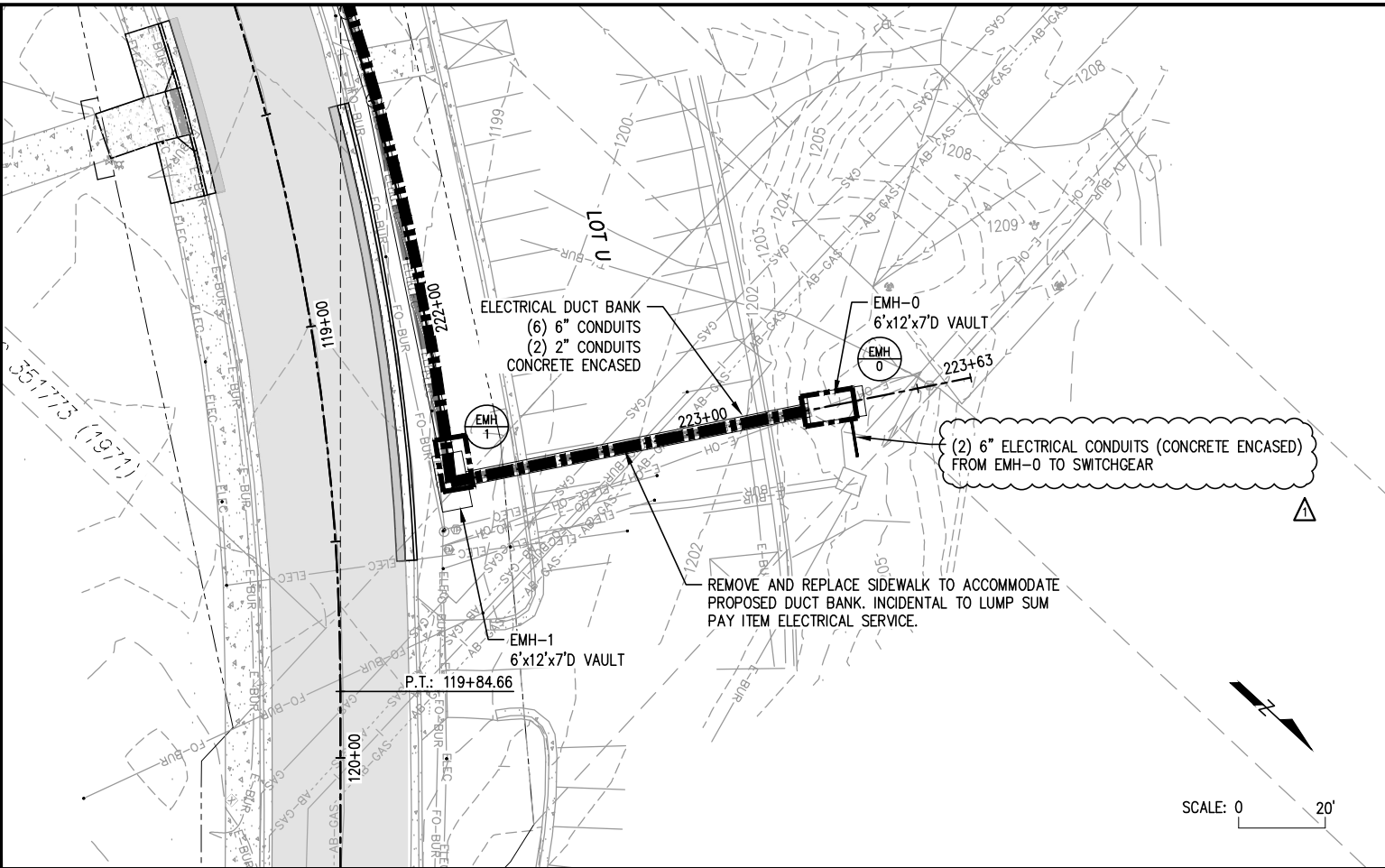
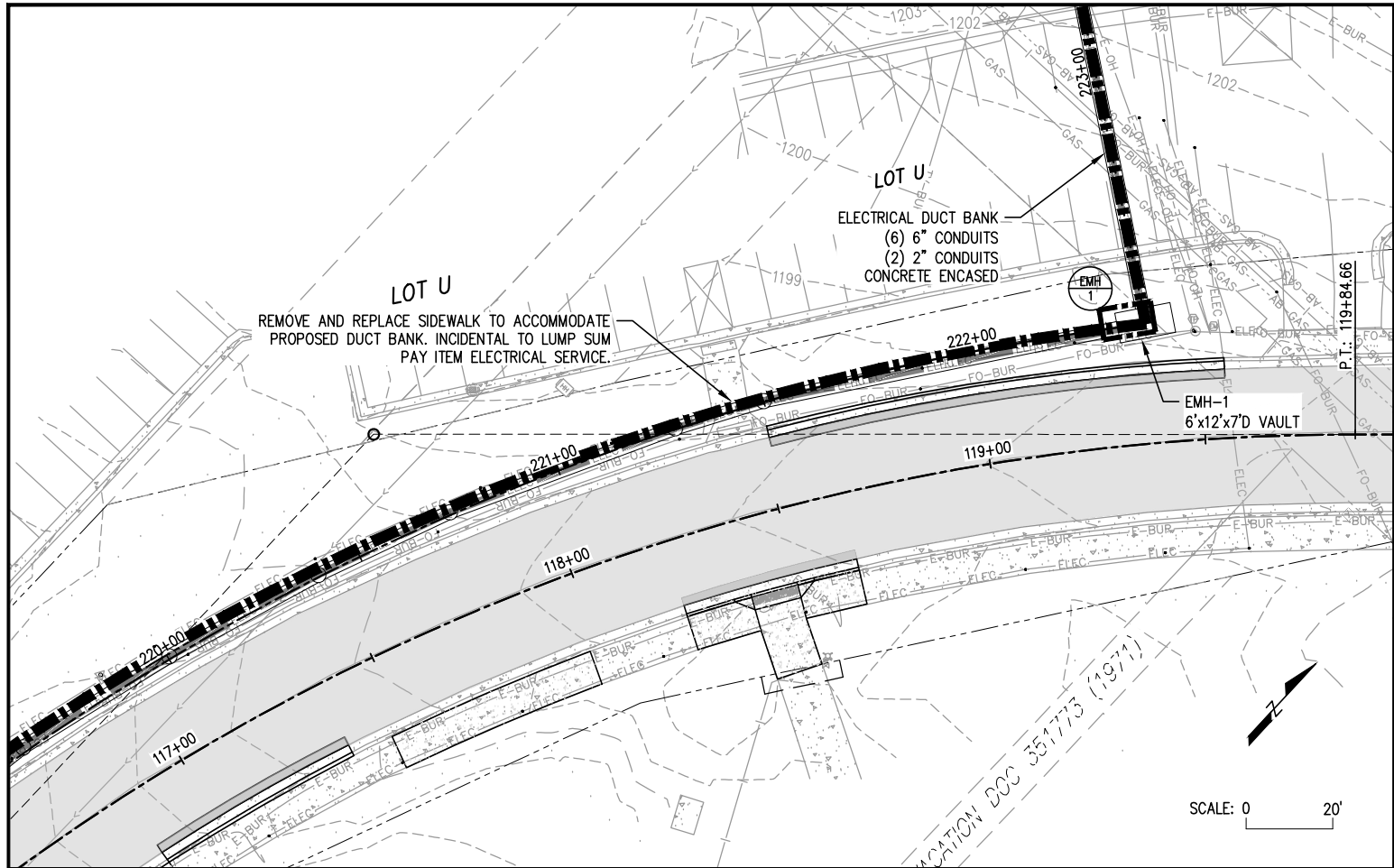
JUNCTION AVE/ST. MARIE ST. RECONDITIONING

1 03/25/2025 ADDENDUM 01

PLAN & PROFILE

SHEET NO. DB04 OF DB14 SHEETS

PLOT DATE: 3/19/2025 1:37:36 PM FILE: G:\240250\240771\Drawings\Civil\240250_DB03-DB07-Duct Bank_P&P.dwg



LHB PROJECT NO. 240250/240771		NON-PARTICIPATING		1	03/25/2025	ADDENDUM 01
I HEREBY CERTIFY that this plan, specification or report was prepared by me or under my direct supervision and that I am a duly Licensed Professional Engineer under the laws of the State of Minnesota.		S.A.P. 118-156-013		PLAN & PROFILE		
DAVID POLSON PRINTED NAME	<i>David Polson</i> SIGNATURE	CITY PROJECT 1464		SHEET NO. DB07 OF DB14 SHEETS		
02/07/2025 DATE	57246 LIC. NO.	JUNCTION AVE/ST. MARIE ST. RECONDITIONING				

PLOT DATE: 3/19/2025 1:43:48 PM FILE: G:\24Pro\240250\500 Drawings\Civil\240250_DB03-DB07-Duct Bank_P&P.dwg