

**ADDENDUM NO. 2**  
**February 10, 2025**

**DLH North Business Development Area Hangar**  
**City Project No. 25-4401**  
**Duluth International Airprt**  
**Duluth, Minnesota**

**SEH No. DULAI 180746**

From: Short Elliott Hendrickson Inc.  
3535 Vadnais Center Drive  
St. Paul, MN 55110-3507  
651.490.2000

To: Document Holders

DOCUMENT HOLDERS on the above-named project are hereby notified that this document shall be appended to, take precedence over and become part of the original bidding documents dated January 13, 2025, for this work. Bids submitted for the construction of this work shall conform to this document.

This addendum consists of 2 page(s) and attached Drawing No.A111, A201 and A301.

**Changes to Specifications:**

1. Section No. 09 67 00 Fluid Applied Flooring – Changes to specification were made to remove conflicts between the specification and potential manufacturer's recommendations.
  - a. References to urethane primer were removed and replaced with primer/intermediate coat.
  - b. Everthane Series 247 by Tnemec was removed and replaced with Everthane Series 248 by Tnemec.

**Changes to Drawings:**

2. Drawing No. G007 Summary of Estimated Quantities, Delete the estimated quantity **4980 SF** for Line Item 84, Liquid Applied Coating, and replace with the quantity **5220 SF**.
3. Drawing No. A111 PEMB Floor Plan – Level 1 & Door Schedule, DELETE in its entirety and REPLACE with attached new Drawing No. A111.
4. Drawing No. A201 Exterior Elevations, DELETE in its entirety and REPLACE with attached new Drawing No. A201.
5. Drawing No. A301 Building Sections, DELETE in its entirety and REPLACE with attached new Drawing No. A301.

**Contractor Questions:**

6. Q: I need clarification on the bi-fold door size. Is it 60x16 clear open when the door is open? According to the drawing the architect is showing the top of the door at 16' which would make the bi-fold 13' 6" when open. Please clarify.

*A: See updated attached Architectural sheets. This bi-fold door clearance will need to be 16'.*

7. Q: Common excavation item. There are no tables or basis of how this was figured/what it is comprised of. Does SEH have an earthwork summary to offer?

*A: There are earthwork summary notes on Sheet G006:*

## EARTHWORK SUMMARY & NOTES:

1. STRIPPING, ON SITE STOCKPILING AND PLACING OF STRIPPED AND SALVAGED TOPSOIL WILL BE PAID FOR UNDER COMMON EXCAVATION.
2. EXCAVATION OR FIELD GRADING QUANTITIES OUTSIDE OF THE GRADING LIMITS SHALL BE DETERMINED QUANTITIES FROM A TOPOGRAPHIC SURVEY FROM BEFORE & AFTER THE WORK. THE SURVEY DATA COMPLETED BY THE CONTRACTOR SHALL BE SUBMITTED TO THE ENGINEER.
3. UNCLASSIFIED EXCAVATION QUANTITIES ARE ESTIMATES ONLY. QUANTITIES FOR PAYMENT MUST BE JUSTIFIED FROM A TOPOGRAPHIC SURVEY FROM BEFORE & AFTER THE WORK. THE SURVEY DATA SHALL BE SUBMITTED TO THE ENGINEER.

*We don't have any additional earthwork summary beyond the notes but the common ex. number came from calculating the required cut in the green space, topsoil cut, and detention basin areas.*

8. Q: Building Foundation. Geotech indicates an aggregate pier system or excavate/replace with engineered fill. What method is the basis of bid for this?

*A: The contractor should determine which method they intend to construct. The excavation and structural fill or aggregate piers needed for the soil correction should be accounted for in the Foundation Construction item.*

9. Q: The drawings indicate that the second floor has a concrete slab over decking though I don't see any specific details. Can you provide structural details regarding this floor design?

*A: This information can be found on sheet A401, detail 11, Typical Floor System. The floor assembly is UL D502. We would estimate the concrete topping to be 2.5-3" but that could vary depending on the PEMB supplier's design so please coordinate with the PEMB supplier.*

10. Q: Who do we submit questions to for this project? Is there a preferred format or email okay?

*A: Please submit questions to [smcmahon@sehinc.com](mailto:smcmahon@sehinc.com). Email is the preferred format.*

11. Q: While the City of Duluth is mentioned in several places in the manual, there is no mention of Community Benefits – only mention in General Bid Specs doc is “Contractors will be required to provide all data required by the city, state or federal funding source(s) for reporting purposes; including, but not limited to job creation and retention data, itemized invoices, payroll records, certifications and licenses.” How is the City involved and are they funding this one?

*A: The City of Duluth is not funding this project, it is a mix of FAA, MnDOT, and Airport funds. We don't anticipate any specific reporting to the City of Duluth. Prevailing wage reporting, Buy American certifications, and DBE reporting will all be required for other requirements in the contract. Specific City of Duluth permits may require additional reporting or inspections, such as the NPDES stormwater permit.*

**NOTE:** Receipt of this Addendum No. 2, dated February 10, 2025 shall be acknowledged on [Bid Express](#). Failure to do so will not allow Bidder to submit Bid.

**END OF ADDENDUM**

## SECTION 09 67 00

### FLUID APPLIED FLOORING

#### PART 1 GENERAL

##### 1.01 SUMMARY

- A. Provide:
  - 1. Chemical resistant urethane coating.
  - 2. Chemical resistant primer/intermediate coat.
  - 3. Special flooring accessories including, but not limited to:
    - a. Coloring and UV Blockers
- B. Related Sections:
  - 1. Section 03 30 00 - Cast-in-Place Concrete
  - 2. Section 03 35 00 - Concrete Finishing
- C. Alternates: Refer to Section 01 23 00.

##### 1.02 REFERENCES

- A. ASTM:
  - 1. C884 - Thermal Compatibility Between Concrete and Epoxy Resin Overlays
  - 2. D412 - Tensile Strength for Vulcanized Rubber and Thermoplastic Elastomers
  - 3. D522 - Mandrel Bend Test of Organic Coatings
  - 4. D570 - Water Absorption of Plastics
  - 5. D2134 - Test for Hardness of Organic Coatings
  - 6. D2370 - Tensile Properties of Coatings
  - 7. D3450 - Washability Properties of Interior Architectural Coatings
  - 8. D3960 - Determining VOC Content of Paints and Coatings
  - 9. D4060 - Abrasion Resistance of Organic Coatings
- B. Green Seal GS 11 - Environmental Requirements for Paints
- C. International Concrete Repair Institute (ICRI) Guideline 03732 - Selecting and Specifying Concrete Surface Preparation for Sealers, Coatings, and Polymer Overlays
- D. SSPC-SP 13 - Surface Preparation of Concrete

##### 1.03 SUBMITTALS

- A. Refer to Section 01 33 00.
- B. Product Data: Submit manufacturer's current Product Data including:
  - 1. Preparation instructions and recommendations.
  - 2. Storage and handling requirements and recommendations.
  - 3. Installation methods.
  - 4. Provide a cut sheet or material safety data sheet for every sealant used within the building with VOC levels highlighted.
  - 5. Operation and maintenance data.
- C. Shop Drawings: Submit Shop Drawings showing system fabrication, installation drawings, including plans, details of components and configurations within system and between system and adjoining system.

- D. Samples:
  - 1. Initial Selection: Submit manufacturer's standard color samples for each type of finish with Product Data and Shop Drawings.
  - 2. Verification: Prior to shipping, submit each type of finish indicated; in sets for each color, texture, and pattern specified, showing a full range of variations expected in these characteristics.
  - 3. Include notification to Architect if selection is not within specified price range.
- E. Maintenance Manual: Provide to Owner maintenance and warranty data in "Maintenance Manual" at Maintenance Demonstration at Substantial Completion.

#### **1.04 QUALITY ASSURANCE**

- A. Provide special flooring, including primers, colorants, slip-retardant aggregates, resins, hardening agents, and finish coats from a single manufacturer.
- B. Qualifications:
  - 1. Manufacturer: 5 years experience in the manufacture of specified flooring.
  - 2. Contractor: 3 years experience in the installation of specified flooring.
  - 3. Personnel: For actual installation of special flooring, use personnel skilled in work required, completely familiar with manufacturer's recommended methods of installation, thoroughly familiar with requirements of work.
- C. Regulatory Requirements:
  - 1. Meet or outperform VOC limits for adhesives, sealants.
  - 2. Products shall comply with the United States Clean Air Act for maximum VOC content.
- D. Manufacturer Certifications:
  - 1. Provide to Architect, certification of the installer from the manufacturer of special flooring, that the installer is approved by the manufacturer.
  - 2. Manufacturer's certification that coatings comply with specified requirements and are suitable for intended application.
- E. Field-Erected Mockups:
  - 1. Before installing special flooring, erect mock-up for each form of construction and finish required to verify selections made under sample submittals and to demonstrate aesthetic effects as well as qualities of materials and execution.
  - 2. Build mock-up to comply with the following requirements, using materials indicated for final unit of work.
  - 3. Location: Locate mock-up on site in location and size indicated or, if not indicated, directed by Architect/GC.
  - 4. Scope: Demonstrate the proposed range of aesthetic effects and workmanship.
  - 5. Acceptance: Obtain Architect's/Owner's acceptance of mock-up before start of final unit of work.
  - 6. Maintenance: Retain and maintain mock-up during construction in undisturbed condition as a standard for judging completed unit of work.
  - 7. Accepted mock-up in undisturbed condition at time of Substantial Completion may become part of completed unit of work.
- F. Preinstallation Meetings: Installer and manufacturer's technical representative shall meet with General Contractor prior to the start of installation.

#### **1.05 DELIVERY, STORAGE, AND HANDLING**

- A. Delivery: Labels to clearly identify:
  - 1. Coating or material name.
  - 2. Manufacturer.
  - 3. Color name and number.
  - 4. Batch or lot number.
  - 5. Date of manufacture.

6. Mixing and thinning instructions.
- B. Storage:
1. Store in a dry, temperature-controlled environment (50 degrees F to 90 degrees F) and out of direct sunlight, as per manufacturer's recommendations.
  2. Keep resins, hardeners, and solvents separated from each other and away from sources of ignition.
  3. Follow manufacturer's instructions for further storage and handling requirements.
  4. Handle to prevent damage or contamination.
  5. Do not use materials beyond manufacturer's shelf life limits.
- C. Replace damaged, outdated, unacceptable material prior to acceptance at no additional cost to Owner.

## 1.06 PROJECT CONDITIONS

- A. Environmental Requirements: Refer to manufacturer's instructions; strictly follow.
- B. Existing Conditions: Drawings do not purport to show actual field dimensions, but are intended only to establish location and scope of Work. Field-verify dimensions and assume full responsibility for their accuracy.
- C. Lighting: Permanent lighting will be in place and working before installation of floor coating.
- D. Dust and Contaminants:
1. Schedule coating work to avoid excessive dust and airborne contaminants.
  2. Protect work areas from excessive dust and airborne contaminants during coating application and curing.

## 1.07 WARRANTY

- A. Manufacturer shall warranty the installation of the product.
1. Warranty shall include warranty against delamination, adhesion defects, or deterioration due to normal wear, not including Owner neglect.
  2. Warranty shall be in effect for a period of 5 years from date of Substantial Completion.

## PART 2 PRODUCTS

### 2.01 MANUFACTURER

- A. Urethane Coating with Coloring:
- a. Standard of Quality is based on products of Everthane Series 248 by Tnemec [www.tnemec.com](http://www.tnemec.com)
  2. Other acceptable manufacturers, subject to compliance with specified requirements, are:
    - a. Polymers [www.generalpolymers.com](http://www.generalpolymers.com)
    - b. Dur-A-Flex, East Hartford, CT [www.dur-a-flex.com](http://www.dur-a-flex.com)
    - c. Dex-o-Tex [www.dexotex.com](http://www.dexotex.com)
    - d. Euclid Chemical Co., Cleveland, OH [www.euclidchemical.com](http://www.euclidchemical.com)
    - e. Diamond Vogel [www.diamondvogel.com](http://www.diamondvogel.com)
    - f. Manufacturer of comparable products submitted in compliance with Section 01 25 13.

### 2.02 MATERIALS

- A. Chemical Resistant Urethane:
1. Primer and intermediate coat as per manufacturer for system.
  2. Resistant to Hydrochloric Acid, Phosphoric Acid, Sulfuric Acid, brake fluid, and Skydrol jet fuel.
  3. Two-component.

4. Non-yellowing.
  5. High gloss.
  6. Complying with VOC regulations per ASTM D3960.
  7. Thickness: 3.0 wet mils, 2.5 dry mils.
  8. Product: Everthane Series 248 by Tennant.
  9. Color: To be selected from manufacturers full line
  10. Optional additive for UV Blocker Series 44-600
- B. Special Flooring Accessories: Other materials not specifically described but required for complete, proper installation subject to acceptance of Architect.
- C. Coordination: Contractor shall coordinate all preparation with concrete placing contractor to ensure all necessary steps and additives required within the placing and curing processes are enabled. Coordinate and provide any information and products related to curing, densifiers/hardeners and burnishing procedures are followed for proper product application.

## **PART 3 EXECUTION**

### **3.01 EXAMINATION**

- A. Work of Other Trades: Prior to commencing work, carefully inspect and verify that work is complete to point where this installation may properly commence.
- B. Verification of Conditions: Verify that special flooring may be installed in accordance with original design, pertinent codes and regulations, and pertinent portions of referenced standards.
- C. Verify with concrete Contractor that neither curing compound nor sealer was used on slab. Ensure concrete substrate has cured a minimum of 30 days.
- D. Discrepancies:
1. Immediately notify Architect.
  2. Do not proceed with installation in areas of discrepancy until fully resolved.
  3. Commencement of installation signifies acceptance of surface conditions.

### **3.02 PREPARATION**

- A. Protection: Protect installed work and materials of other trades.
- B. Surface Preparation:
1. Prepare concrete and masonry surfaces in accordance with manufacturer's instructions, SSPC-SP 13 and ICRI 03732.
  2. Provide concrete testing required by coating manufacturer.
  3. Surface should be checked for soundness and any "hollow" area should be removed.
  4. Fill depressions and spalled areas and cracks with manufacturer's approved product.
  5. Grind or otherwise make smooth.
  6. Remove grease, oil, and other penetrating contaminants.
  7. Repair damaged and deteriorated concrete to acceptable condition, leaving surface free of dust, dirt, laitance, and efflorescence.
  8. All required preparation, including but not limited to abrasive blasting and detail grinding necessary for bonding, shall be provided.
  9. Substrate for special flooring shall be prepared using manufacturer's recommended methods.

### **3.03 APPLICATION**

- A. Comply with design and manufacturer's recommendations, as accepted by Architect.

- B. Primer/intermediate coat:
  - 1. Mix according to manufacturer's instructions, including colorant.
  - 2. Clean rollers to remove residual lint.
  - 3. Apply according to manufacturer's instructions.
  - 4. Allow to dry 4 hours at 75 degrees F and 50 percent relative humidity, or per manufacturer's instructions.
  
- C. Urethane Coating:
  - 1. Install according to manufacturer's instructions.
  - 2. Clean rollers to remove residual lint.
  - 3. Produce a uniform monolithic flooring surface.
  - 4. Protect from traffic for 24 hours after coating application.

### **3.04 REPAIR/RESTORATION**

- A. Damaged Coatings: Touch up or repair. Recoat entire surface where touch-up result is visibly different, either in sheen, texture, or color.
  
- B. Use materials, procedures recommended or furnished by manufacturer.
  
- C. Materials and surfaces not scheduled to be coated: Repair or replace.

### **3.05 CLEANING**

- A. Site:
  - 1. Do not allow accumulation of scraps, debris arising from work of this Section.
  - 2. Maintain premises in neat, orderly condition.
  - 3. Safe and proper disposal of excess materials shall be done in accordance with applicable federal, state, and local codes.
  
- B. System:
  - 1. Clean exposed surfaces of special flooring using materials and methods recommended by manufacturer.
  - 2. Remove temporary coverings and protection of surrounding areas and surfaces.

### **3.06 FIELD QUALITY CONTROL**

- A. Inspector's Services:
  - 1. Verify coatings are as specified.
  - 2. Verify surface preparation and application are as specified.
  - 3. Verify DFT of each coat and coating system are as specified using wet film and dry film gages.
  - 4. Check coatings for film characteristics or defects that would adversely affect performance or appearance of coating systems.
  - 5. Submit written reports to Architect and Contractor describing inspections made and actions taken to correct nonconforming work.
  
- B. Manufacturer's Services: Provide technical assistance and guidance for surface preparation and application of coating systems.

### **3.07 DEMONSTRATION**

- A. Maintenance Instructions: Manufacturer's representative to schedule and attend meeting with Owner's representatives to explain:
  - 1. Maintenance and Care Instructions.
  - 2. Recommended Maintenance Program.
  - 3. Warranty Requirements.

### **3.08 PROTECTION**

- A. Protect surfaces of coating systems from damage during construction until acceptance by Owner at Substantial Completion.

### **3.09 ONE-YEAR INSPECTION**

- A. Owner to set date for 1-year inspection of coating systems.
- B. Inspection to be attended by Owner, Contractor, Architect, and manufacturer's representative.
- C. Repair deficiencies in coating systems as determined by Architect in accordance with manufacturers instructions.

### **3.10 SCHEDULES**

- A. Hangar #100
- B. Mechanical Office #109

**END OF SECTION**



I HEREBY CERTIFY THAT THIS PLAN, SPECIFICATION OR REPORT WAS PREPARED BY ME OR UNDER MY DIRECT SUPERVISION AND THAT I AM A DULY LICENSED ARCHITECT UNDER THE LAWS OF THE STATE OF MINNESOTA

SCOTT A. BLANK, AIA

DATE 01/13/2025 LICENSE NO. 51092



DULUTH INTERNATIONAL AIRPORT (DLH)  
NORTH BUSINESS DEVELOPMENT AREA HANGAR  
DULUTH, MN

This drawing is an instrument of service and shall remain the property of Scott Ellet Hendrickson, Inc. (SEH). This drawing, concepts and ideas contained herein shall not be used, reproduced, revised, or retained without the express written approval of SEH.

Submission or distribution of this drawing to meet official or regulatory requirements or for purposes in connection with the project is not to be construed as publication in derogation of any of the rights of SEH.

SEH Project Checked By Drawn By  
DULAI 172594 CB RV

Project Status Issued for Bid  
01/13/2025

REV. #	DESCRIPTION	DATE
1	Addendum 2	02/04/25

PEMB FLOOR PLAN - LEVEL 1 & DOOR SCHEDULE

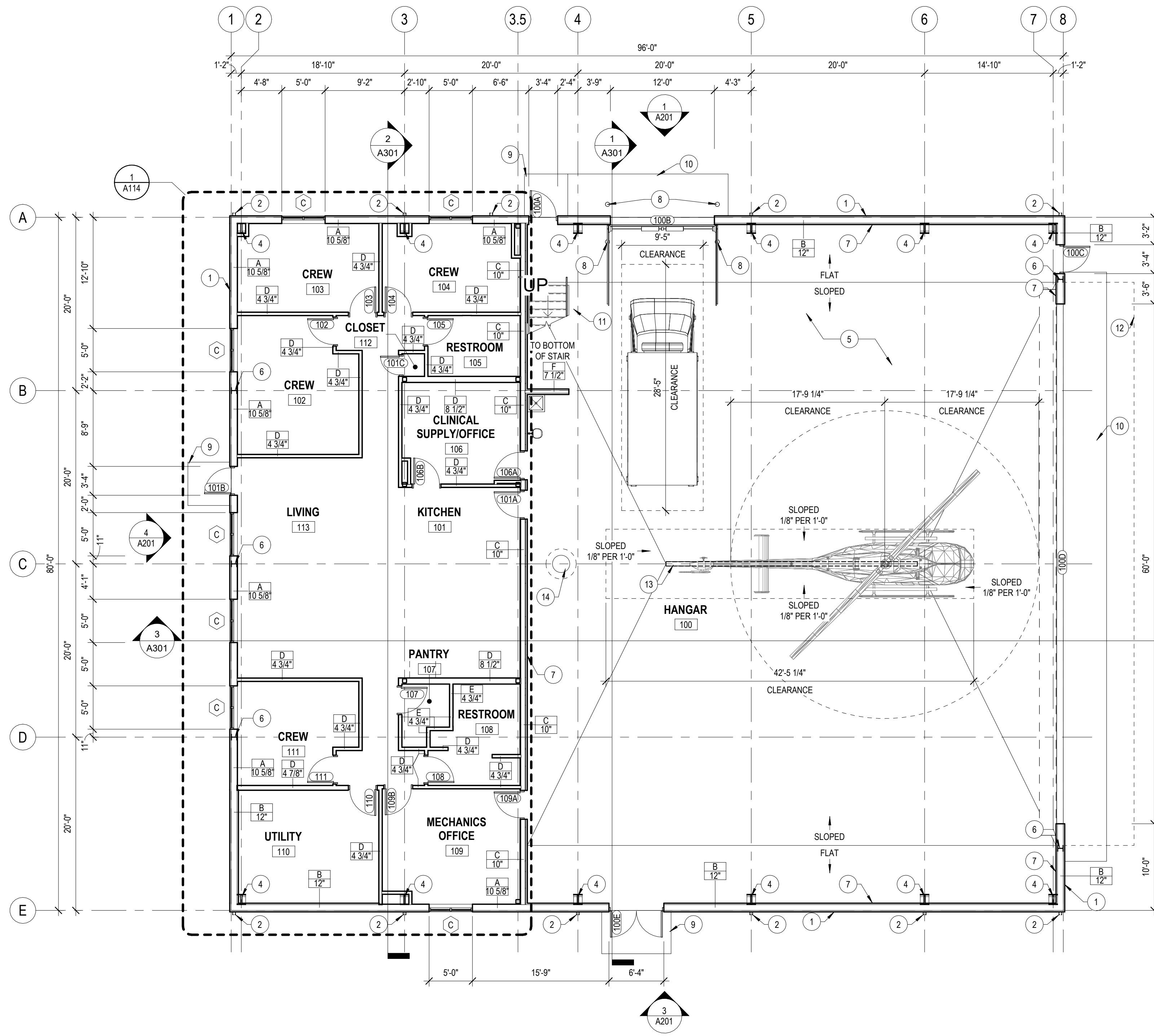
A111

**GENERAL NOTES**

- A. PRE-ENGINEERED METAL BUILDING MANUFACTURER SHALL PROVIDE FLASHING, TRIM, ROOF EDGE, DRIP EDGE AND OTHER MISCELLANEOUS MATERIALS TO ENSURE WEATHER TIGHT BUILDING ENVELOPE
- B. PROVIDE RIGID STEEL FRAMES (PORTAL FRAMES) IN PLACE OF X-BRACING IN LOCATIONS WHERE BRACING IS IN CONFLICT WITH OVERHEAD DOORS AND OTHER WALL OPENINGS
- C. SEE EXTERIOR ELEVATIONS FOR ADDITIONAL LOCATIONS AND SIZES OF LOUVERS, MECHANICAL AND EQUIPMENT OPENINGS
- D. FOR DOOR, FRAME AND WINDOW TYPES - SEE SHEET A003
- E. FOR ROOF PENETRATIONS - SEE 8/A400

**PEMB PLAN KEYNOTES**

- 1 PREFINISHED EXTERIOR METAL WALL PANEL BY PEMB MANUFACTURER
- 2 PREFINISHED METAL DOWNSPOUT BY PEMB MANUFACTURER (COLOR TO MATCH WALL PANEL)
- 3 PREFINISHED METAL LOUVER - MATCH WALL PANEL
- 4 STEEL COLUMN BY PEMB MANUFACTURER
- 5 CONCRETE SLAB ON GRADE - SEE STRUCTURAL FOR DETAILS (AND SLOPE AS OCCURS)
- 6 STEEL WIND COLUMN BY PEMB MANUFACTURER
- 7 PREFINISHED METAL INTERIOR LINER PANEL
- 8 CONCRETE FILLED STEEL BOLLAR - SEE CIVIL
- 9 CONCRETE STOOP - SEE STRUCTURAL
- 10 CONCRETE APRON - SEE STRUCTURAL
- 11 INDICATES GALVANIZED STEEL STAIR SYSTEM. PROVIDE 1 1/2" DIA. STEEL HANDRAIL AT WALLSIDE, 1 1/2" DIA. STEEL GUARDRAIL WITH HANDRAIL AT OPEN SIDE. REFER TO SECTION FOR MORE INFORMATION.
- 12 DASHED LINE INDICATES HANGAR DOOR IN OPEN POSITION
- 13 TRENCH DRAIN - SEE STRUCTURAL AND PLUMBING
- 14 DRAIN INTERCEPTOR - SEE STRUCTURAL AND PLUMBING



1 FLOOR PLAN - LEVEL 1  
1/8" = 1'-0"

DOOR NUMBER	DOOR							DETAILS			
	HEIGHT	WIDTH	DOOR MATERIAL	DOOR TYPE	GLASS TYPE	FRAME TYPE	FIRE RATING	HARDWARE GROUP	HEAD DETAIL	JAMB DETAIL	REMARKS
100A	7'-0"	3'-0"	MTL	HG	GL-1	F1	-	2	12/A401	12/A401 SIM	A,B,G
100B	12'-0"	12'-0"	MTL	OH	-	-	-	-	3/A401	6/A401	B,C
100C	7'-0"	3'-0"	MTL	HG	GL-1	F1	-	2	12/A401	12/A401 SIM	A,B,G
100D	20'-0"	60'-0"	MTL	BI-FOLD	-	-	-	-	-	-	C,D
100E	7'-0"	6'-0"	HM	F	-	F1	-	1	12/A401	12/A401 SIM	A,B,E,G
101A	7'-0"	3'-0"	HM	NL	GL-2	F1	90 MIN	6	14/A401	14/A401 SIM	A,B
101B	7'-0"	3'-0"	HM	HG	GL-1	F1	-	2	13/A401	13/A401 SIM	A,B,G
101C	7'-0"	2'-2"	WD	F	-	F1	-	7	9/A401	10/A401	A
102	7'-0"	3'-0"	WD	F	-	F1	-	5	9/A401	10/A401	A,B,F
103	7'-0"	3'-0"	WD	F	-	F1	-	5	9/A401	10/A401	A,B,F
104	7'-0"	3'-0"	WD	F	-	F1	-	5	9/A401	10/A401	A,B,F
105	7'-0"	3'-0"	WD	F	-	F1	-	5	9/A401	10/A401	A,F
106A	7'-0"	3'-0"	HM	NL	GL-2	F1	90 MIN	3	14/A401	14/A401 SIM	A,B
106B	7'-0"	3'-0"	HM	NL	GL-1	F1	-	3	9/A401	10/A401	A
107	7'-0"	3'-0"	WD	F	-	F1	-	6	9/A401	10/A401	A
108	7'-0"	3'-0"	WD	F	-	F1	-	5	9/A401	10/A401	A,F
109A	7'-0"	3'-0"	HM	NL	GL-2	F1	90 MIN	3	14/A401	14/A401 SIM	A,B
109B	7'-0"	3'-0"	WD	NL	GL-1	F1	-	4	9/A401	10/A401	A,F
110	7'-0"	3'-0"	WD	F	-	F1	-	6	9/A401	10/A401	A
111	7'-0"	3'-0"	WD	F	-	F1	-	5	9/A401	10/A401	A,F
200	7'-0"	3'-0"	HM	NL	GL-2	F1	90 MIN	7	14/A401	14/A401 SIM	A,B
201	7'-0"	3'-0"	WD	NL	GL-1	F1	-	3	9/A401	10/A401	A
202	7'-0"	3'-0"	WD	NL	GL-1	F1	-	3	9/A401	10/A401	A
203	7'-0"	6'-0"	HM	F	-	F1	-	8	9/A401	10/A401	A

ABBREVIATION:  
MTL METAL  
HM HOLLOW METAL  
OH OVERHEAD  
WD WOOD

FOR DOOR, FRAME AND GLASS TYPES - SEE SHEET A003

DOOR REMARKS  
A. PAINT DOOR AND FRAME  
B. INSULATE DOOR/FRAME  
C. POWERED OPERATION  
D. CLEAR OPENING TO BE 16"  
E. REMOVABLE CENTER MULLION  
F. NO CLOSER  
G. SEE THRESHOLD DETAIL 7/A400

THIS BAR IS INTENDED TO BE 1" PRINTED AT FULL SCALE

- GENERAL NOTES**
- A. PRE-ENGINEERED METAL BUILDING MANUFACTURER SHALL PROVIDE FLASHING, TRIM, ROOF EDGE, DRIP EDGE AND OTHER MISCELLANEOUS MATERIALS TO ENSURE WEATHER TIGHT BUILDING ENVELOPE
  - B. PROVIDE RIGID STEEL FRAMES (PORTAL FRAMES) IN PLACE OF X-BRACING IN LOCATIONS WHERE BRACING IS IN CONFLICT WITH OVERHEAD DOORS AND OTHER WALL OPENINGS
  - C. SEE EXTERIOR ELEVATIONS FOR ADDITIONAL LOCATIONS AND SIZES OF LOUVERS, MECHANICAL AND EQUIPMENT OPENINGS
  - D. FOR DOOR, FRAME AND WINDOW TYPES - SEE SHEET A003
  - E. FOR ROOF PENETRATIONS - SEE 8/A400

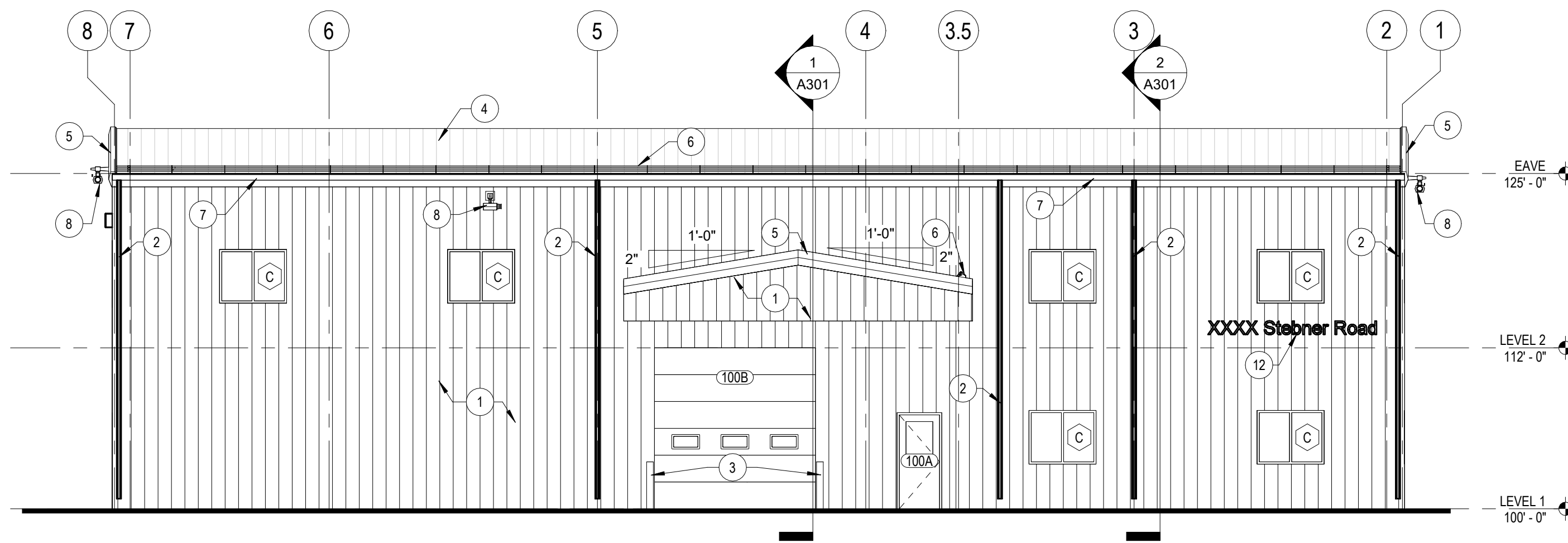


I HEREBY CERTIFY THAT THIS PLAN, SPECIFICATION OR REPORT WAS PREPARED BY ME OR UNDER MY DUTY SUPERVISION AND THAT I AM A DULY LICENSED ARCHITECT UNDER THE LAWS OF THE STATE OF MINNESOTA

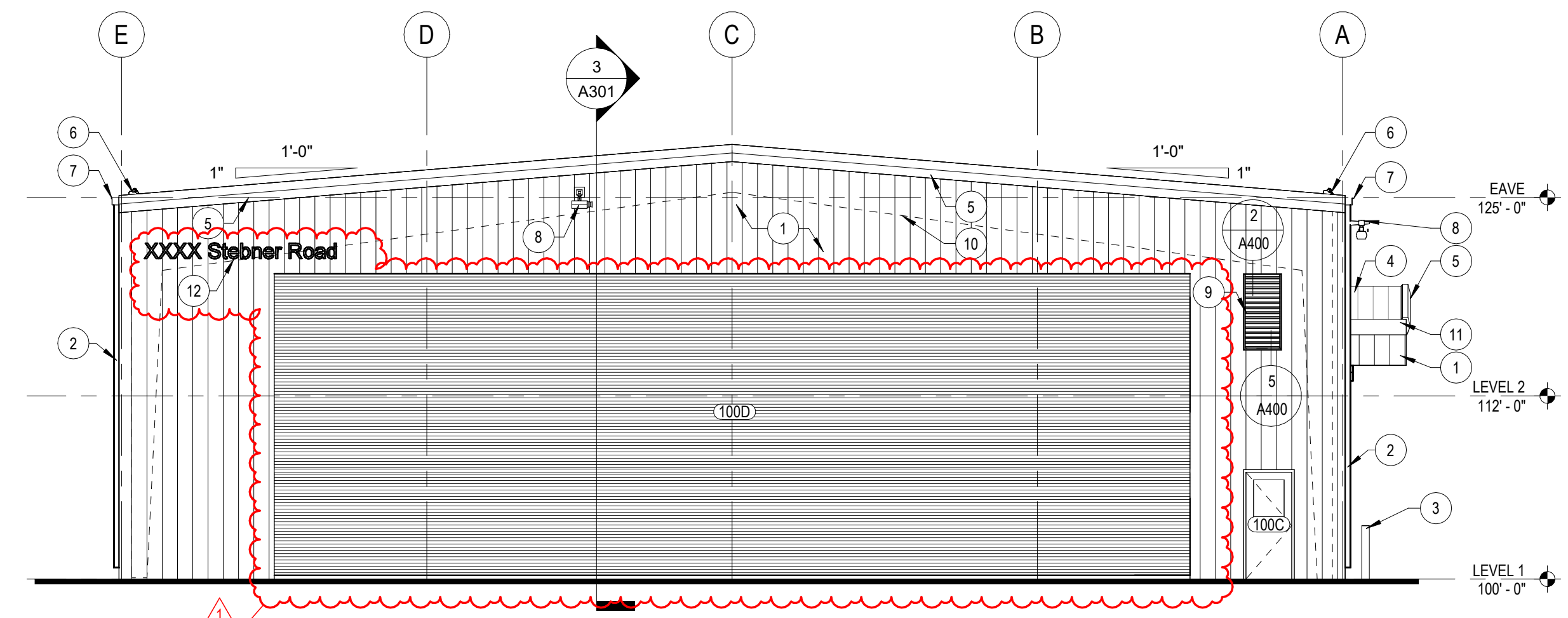
SCOTT A. BLANK, AIA  
DATE 01/13/2025 LICENSE NO. 51092



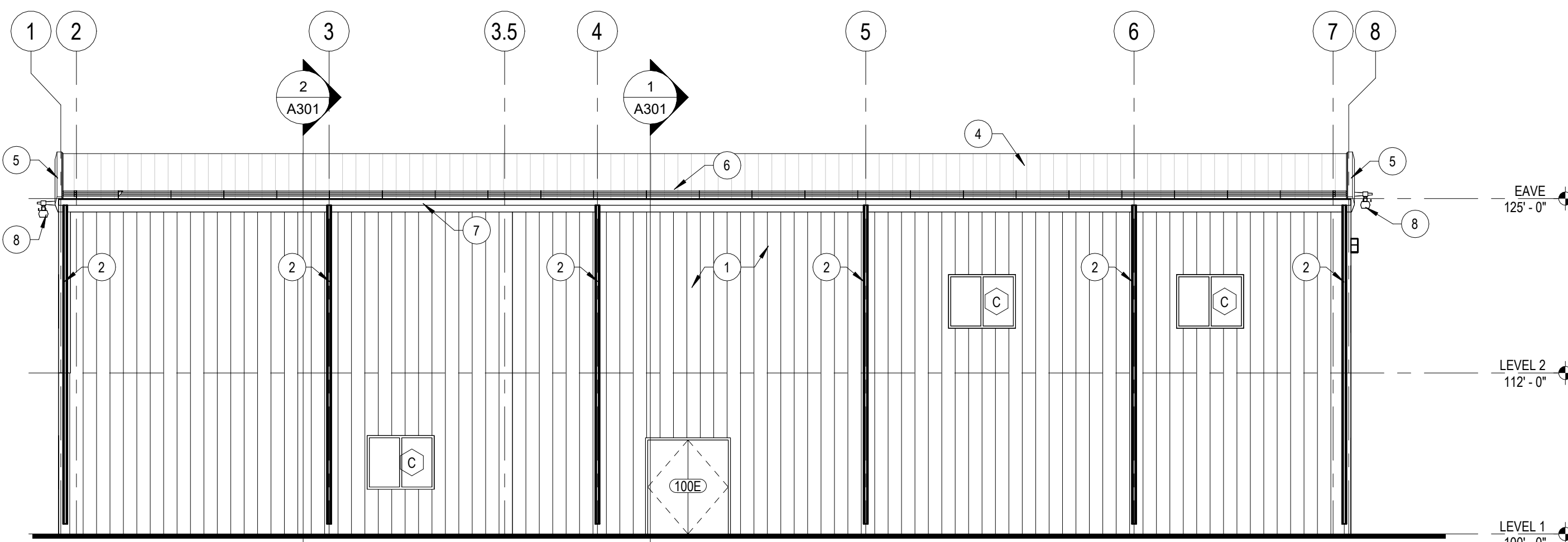
ELEVATION KEYNOTES	
1	PREFINISHED EXTERIOR METAL WALL PANEL BY PEMB MANUFACTURER
2	PREFINISHED METAL DOWNSPOUT BY PEMB MANUFACTURER (COLOR TO MATCH WALL PANEL)
3	CONCRETE FILLED STEEL BOLLAR - SEE CIVIL
4	PREFINISHED METAL ROOF PANEL BY PEMB MANUFACTURER - SEE ROOF PLAN
5	PREFINISHED METAL RAKE TRIM BY PEMB MANUFACTURER
6	ENGINEERED SNOW GUARD SYSTEM OVER DOOR BELOW
7	PREFINISHED METAL GUTTER BY PEMB MANUFACTURER
8	SECURITY CAMERA - SEE ELECTRICAL
9	PREFINISHED METAL LOUVER - MATCH WALL PANEL
10	PEMB FRAME BEYOND - SEE PEMB MANUFACTURER
11	PREFINISHED METAL EAVE TRIM BY PEMB MANUFACTURER
12	12" DIMENSION LETTER SIGNAG



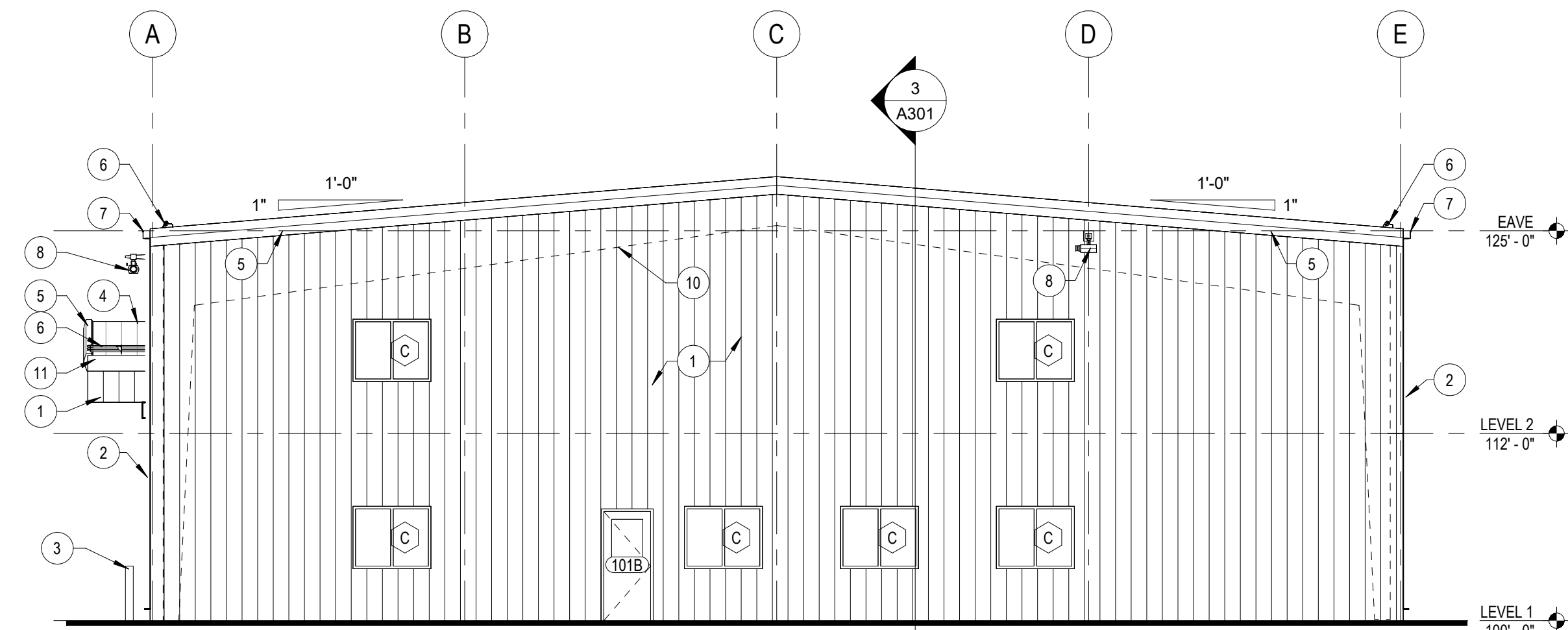
1  
A201  
EXTERIOR ELEVATION - WEST  
1/8" = 1'-0"



2  
A201  
EXTERIOR ELEVATION - NORTH  
1/8" = 1'-0"



3  
A201  
EXTERIOR ELEVATION - EAST  
1/8" = 1'-0"



4  
A201  
EXTERIOR ELEVATION - SOUTH  
1/8" = 1'-0"

THIS BAR IS INTENDED TO BE 1" PRINTED AT FULL SCALE

DULUTH INTERNATIONAL AIRPORT (DLH)  
NORTH BUSINESS DEVELOPMENT AREA HANGAR  
DULUTH, MN

This drawing is an instrument of service and shall remain the property of Scott Elicke Hendrickson, Inc. (SEH). This drawing, concepts and ideas contained herein shall not be used, reproduced, revised, or retained without the express written approval of SEH.

Submission or distribution of this drawing to meet official or regulatory requirements or for purposes in connection with the project is not to be construed as publication in derogation of any of the rights of SEH.

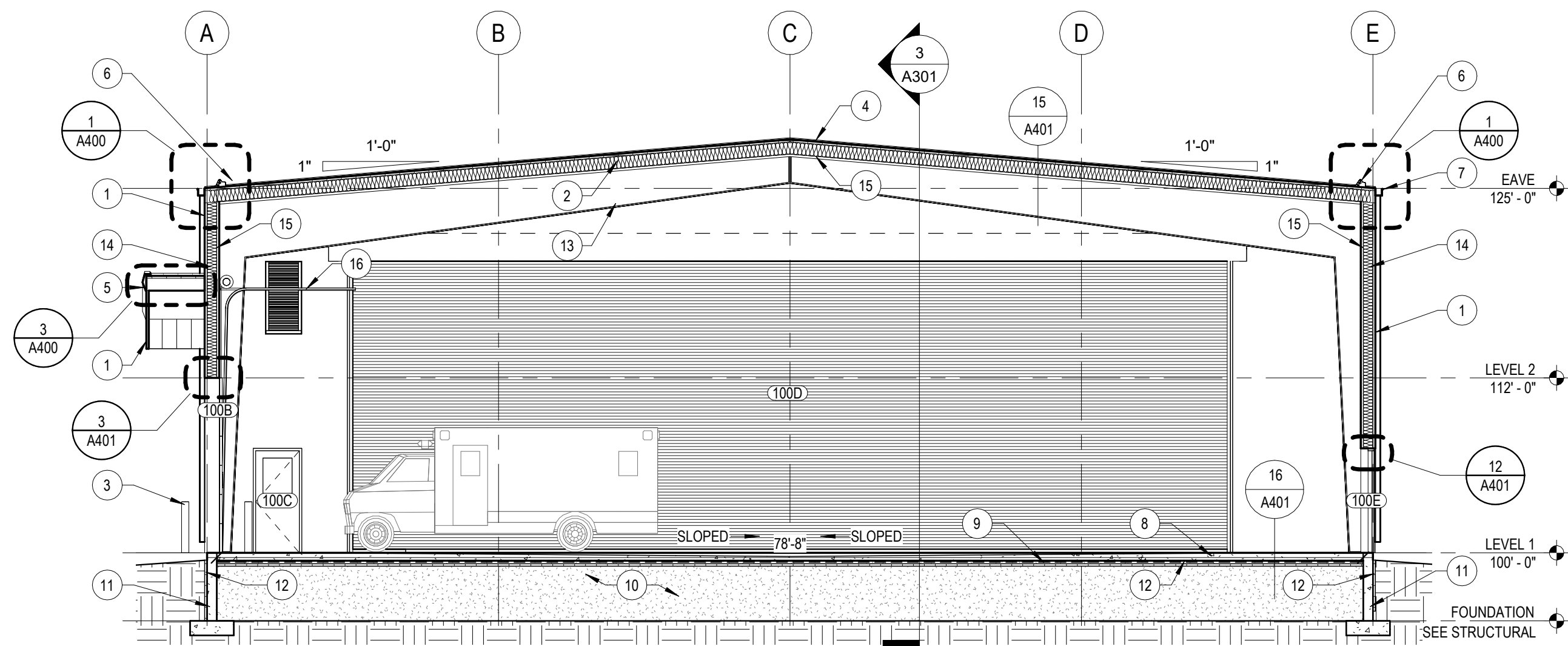
SEH Project: DULAI 172594  
Checked By: CB  
Drawn By: RV

Project Status: Issued for Bid  
Issue Date: 01/13/2025

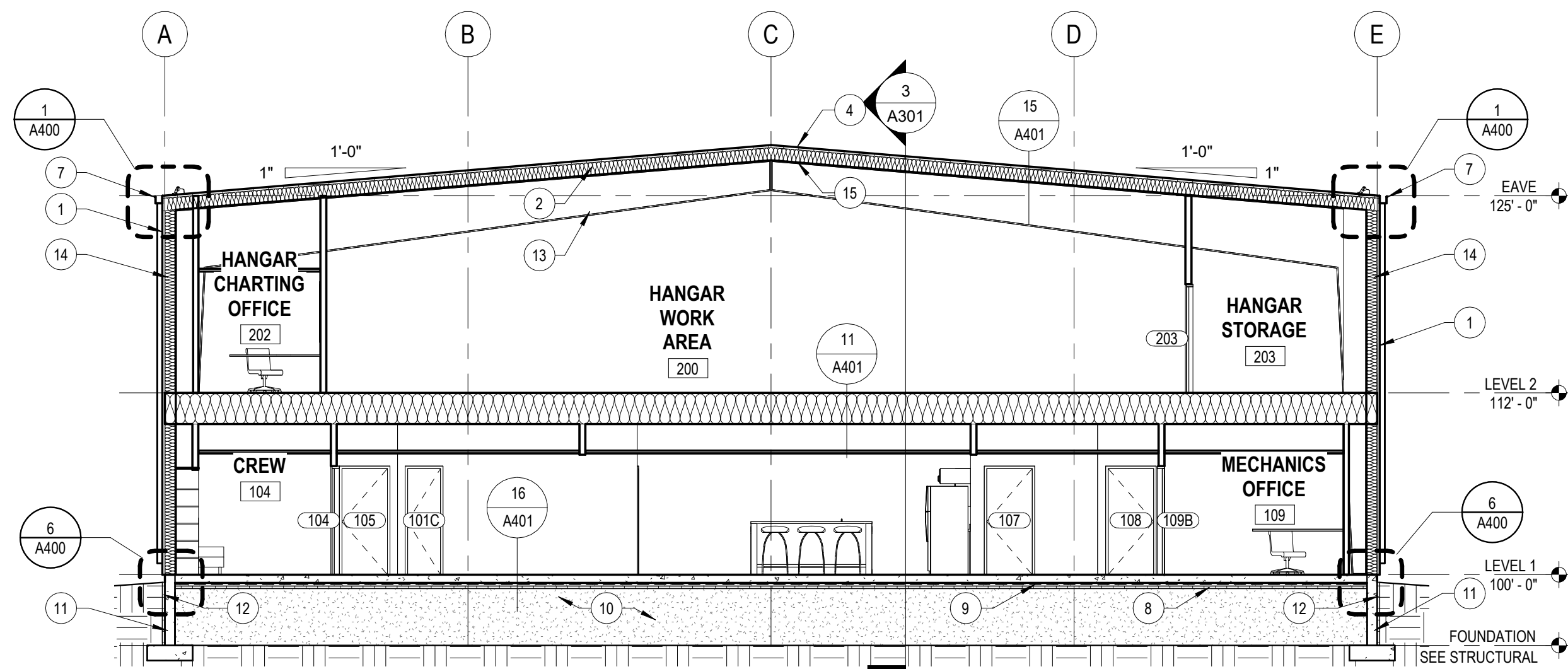
REVISION SCHEDULE		
REV. #	DESCRIPTION	DATE
1	Addendum 2	02/04/25

EXTERIOR ELEVATIONS

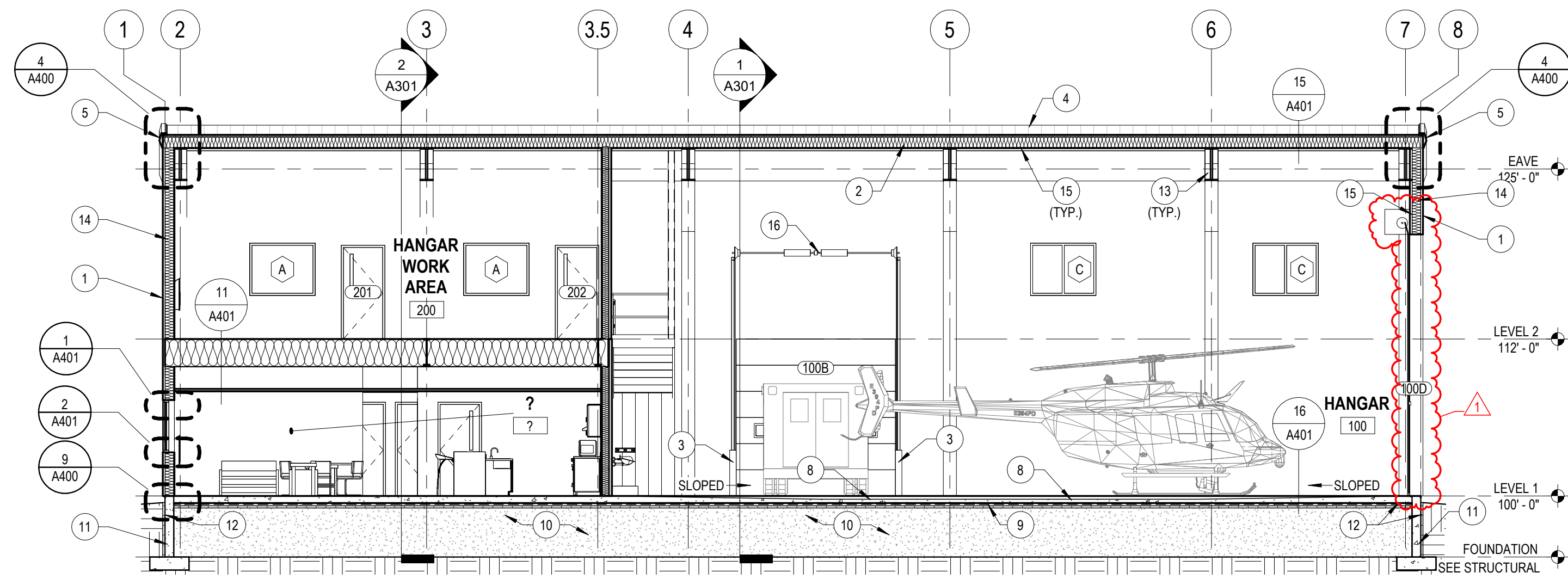
A201



1 BUILDING SECTION AT GRID 4 LOOKING NORTH AT GRID 4  
A301 1/8" = 1'-0"



2 BUILDING SECTION AT GRID 4 LOOKING NORTH AT GRID 3  
A301 1/8" = 1'-0"



3 BUILDING SECTION AT GRID C LOOKING WEST AT GRID C  
A301 1/8" = 1'-0"

**GENERAL NOTES**

- A. PRE-ENGINEERED METAL BUILDING MANUFACTURER SHALL PROVIDE FLASHING, TRIM, ROOF EDGE, DRIP EDGE AND OTHER MISCELLANEOUS MATERIALS TO ENSURE WEATHER TIGHT BUILDING ENVELOPE
- B. PROVIDE RIGID STEEL FRAMES (PORTAL FRAMES) IN PLACE OF X-BRACING IN LOCATIONS WHERE BRACING IS IN CONFLICT WITH OVERHEAD DOORS AND OTHER WALL OPENINGS
- C. SEE EXTERIOR ELEVATIONS FOR ADDITIONAL LOCATIONS AND SIZES OF LOUVERS, MECHANICAL AND EQUIPMENT OPENINGS
- D. FOR DOOR, FRAME AND WINDOW TYPES - SEE SHEET A003
- E. FOR ROOF PENETRATIONS - SEE 8/A400

**SECTION KEYNOTES**

1	PREFINISHED EXTERIOR METAL WALL PANEL BY PEMB MANUFACTURER
2	STEEL PURLIN BY PEMB MANUFACTURER - PROVIDE R-5 THERMAL BLOCKS AT TOP OF PURLINS
3	CONCRETE FILLED STEEL BOLLAR - SEE CIVIL
4	PREFINISHED METAL ROOF PANEL BY PEMB MANUFACTURER - SEE ROOF PLAN
5	PREFINISHED METAL RAKE TRIM BY PEMB MANUFACTURER
6	ENGINEERED SNOW GUARD SYSTEM OVER DOOR BELOW - SEE SPEC
7	PREFINISHED METAL GUTTER BY PEMB MANUFACTURER
8	CONCRETE SLAB ON GRADE - SEE STRUCTURAL FOR DETAILS (AND SLOPE AS OCCURS)
9	PROVIDE VAPOR RETARDER BENEATH FLOOR SLAB
10	NON-FROST SUSCEPTIBLE FILL - SEE STRUCTURAL
11	CONCRETE FOUNDATION WALL - SEE STRUCTURAL
12	2" RIGID FOUNDATION INSULATION
13	PAINTED STEEL BUILDING FRAME BY PEMB MANUFACTURER
14	STEEL GIRT BY PEMB MANUFACTURER
15	INSULATION / VAPOR BARRIER LINER SYSTEM - SEE SPEC
16	PROVIDE HIGH LIFT TRACK AT DOOR TO MAX EXTENT POSSIBLE. COORDINATE WITH MECHANICAL FOR ITEMS ABOVE.



I HEREBY CERTIFY THAT THIS PLAN, SPECIFICATION OR REPORT WAS PREPARED BY ME OR UNDER MY DUTY SUPERVISION AND THAT I AM A DULY LICENSED ARCHITECT UNDER THE LAWS OF THE STATE OF MINNESOTA

SCOTT A. BLANK, AIA  
DATE 01/13/2025 LICENSE NO. 51092



DULUTH INTERNATIONAL AIRPORT (DLH)  
NORTH BUSINESS DEVELOPMENT AREA HANGAR  
DULUTH, MN

This drawing is an instrument of service and shall remain the property of Scott Ellicott Hendrickson, Inc. (SEH). This drawing, concepts and ideas contained herein shall not be used, reproduced, revised, or retained without the express written approval of SEH. Submission or distribution of this drawing to meet official or regulatory requirements or for purposes in connection with the project is not to be construed as publication in derogation of any of the rights of SEH.

SEH Project: DULAI 172594  
Checked By: CB  
Drawn By: RV

Project Status: Issued for Bid  
Issue Date: 01/13/2025

REV. #	DESCRIPTION	DATE
1	Addendum 2	02/04/25

BUILDING SECTIONS

A301

THIS BAR IS INTENDED TO BE 1" PRINTED AT FULL SCALE