

Homelessness & Outreach Response

- Context & Local data
- St. Louis County Public Health & Human Services (PHHS) Overview & Housing & Homelessness Program Unit Roles
- St. Louis County Economic & Community Development Roles
- Current Strategies and Progress
- Feedback
- Sampling of Impacts



Context

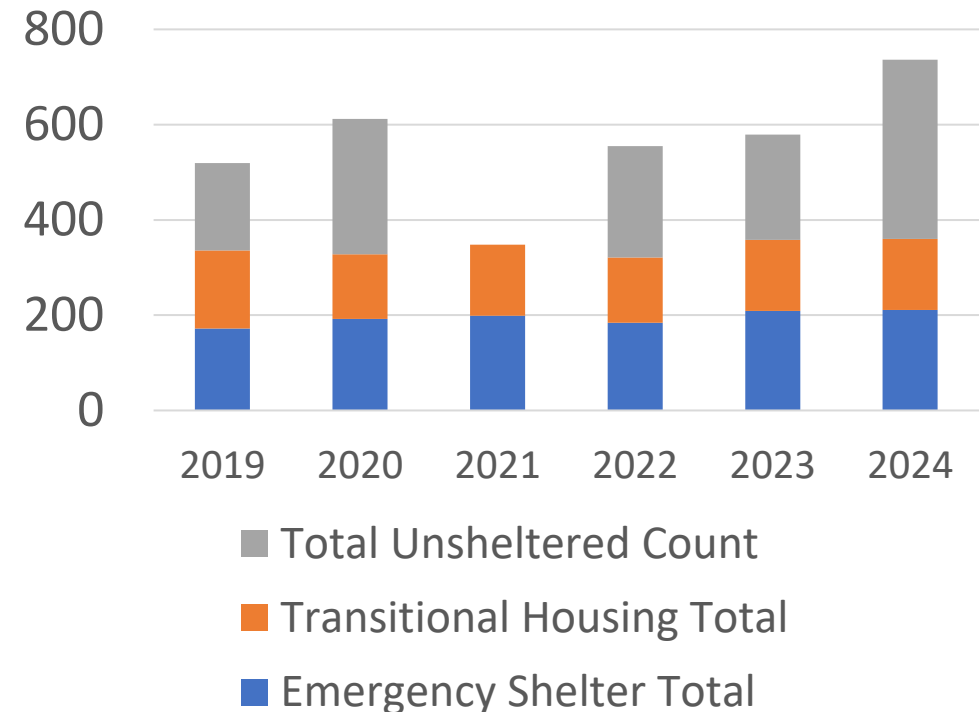
- Nationwide there are more people than ever – individuals and families – experiencing homelessness, and the same is happening in St. Louis County.
- Limited housing and rising costs, increased instances of substance use and mental health challenges are among the most common factors, but every situation is different.
- While encampments and changes in visibility tend to get the most attention and demand for action, we take seriously all situations involving a person experiencing homelessness.
- We work at a systems level, through partnership, towards short- and long-term goals.



Snapshot Data

- From 2013-2023, St. Louis County has seen a **41% increase in overall homelessness** and a **157% increase in chronic homelessness**.
- Copies provided of 2023 COC Annual Report with more data and rich context.
- From our 2021 Environmental Scan and System Analysis of the Homeless Response System in St. Louis County Continuum of Care (see system map, full report on www.stlouiscountymn.gov/HHP):
 - SLC Emergency shelters operate at full capacity
 - Average length of time homeless is increasing
 - 42% of people who exit shelter return to homelessness
 - Average time on Coordinated Entry wait list 14+ months; 73% high vulnerability

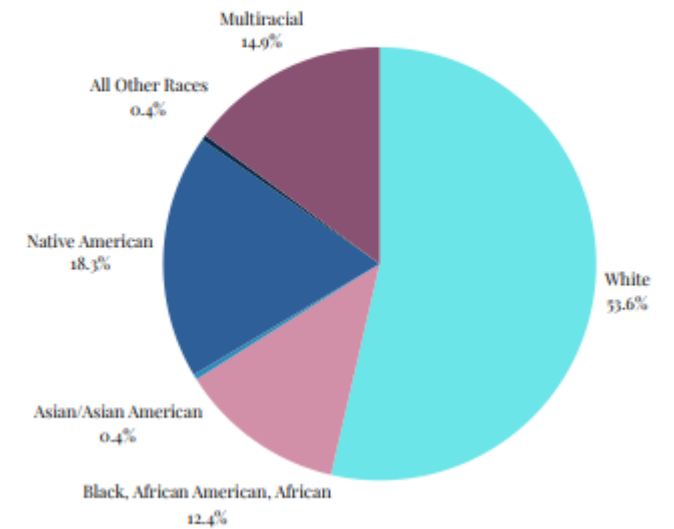
Point in Time Count



Environmental Scan – local background

- Adults without children have the highest rates of homelessness
- Homelessness disparately impacts people who are Black or Indigenous, or other People of Color (46% of people on the Coordinate Entry (CE) wait list)
- 73% of households on the CE priority list have some type of disability
- Multiple episodes of homelessness are common – 60% meet MN definition of “long-term homelessness”
- Financial, credit and background issues are the top challenges to securing housing
- Single youth 18-24 have a 31% return to homelessness rate
- Adults 25+ have an average of 42% returns to homelessness rate

Racial Breakdown of People on the CE Priority List



Context

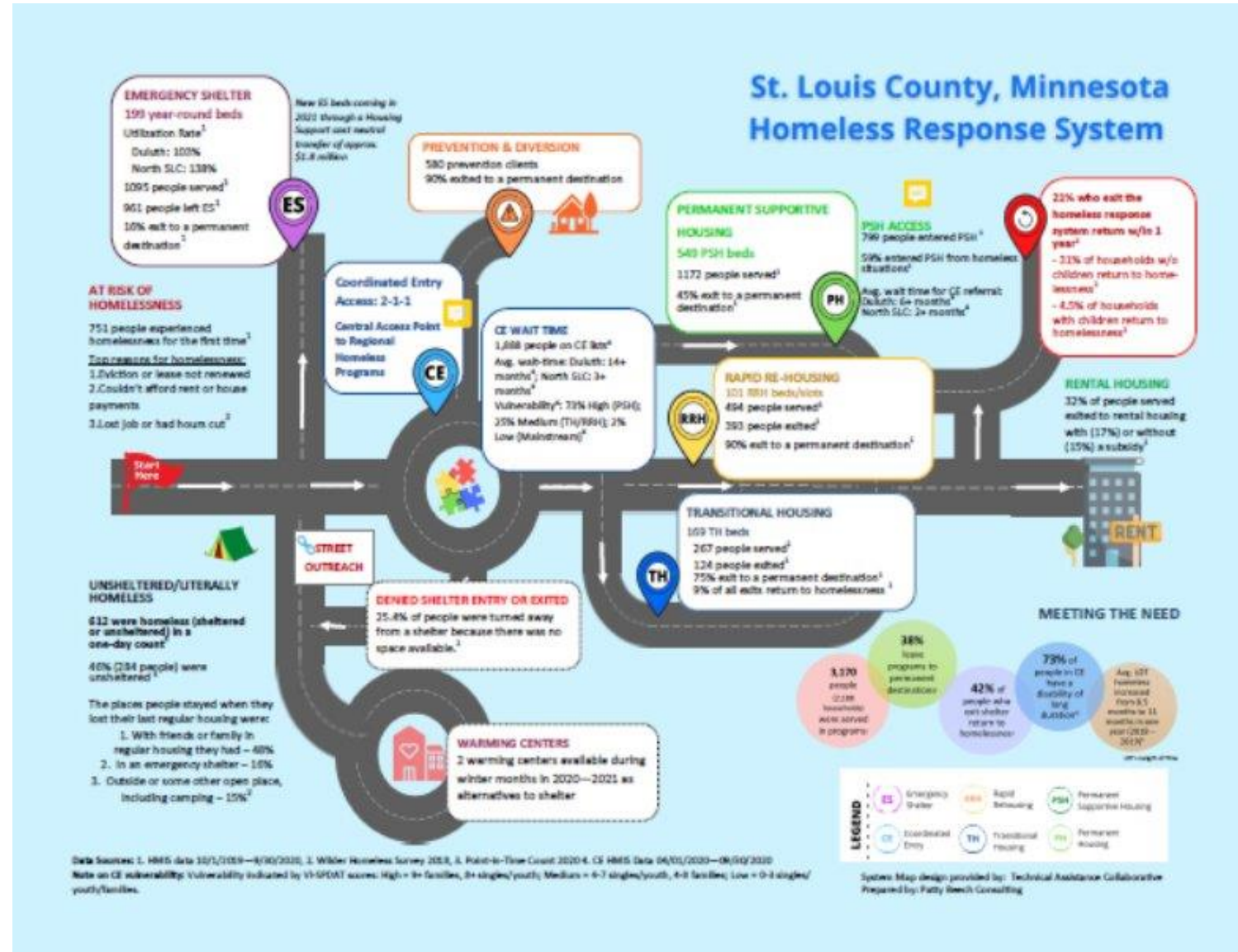
The issue of homelessness is complex and there is no simple solution.

Helping a person experiencing homelessness requires collaboration between many partners to ensure adequate housing exists with supportive services to address the unique needs of the individual that may have resulted in them experiencing homelessness.



Partnership Roles

- Operation of shelters, warming centers, street outreach workers, encampment clean up
- Staff to support residents at permanent supportive housing and other sites
- Building of housing units
- Treatment for substance use and mental health needs.



	Individual	Family	Designated Population Beds				Total	Total Beds
			Youth	Youth w/ Children	Veteran n	Veteran w/ Children		
Supply Inventory								
Emergency Shelter	0	0	7	0	3	0	10	56
Other Permanent Housing	0	0	5	10	0	0	15	138
Permanent Supportive Housing	136	29	35	4	26	0	230	239
Rapid Rehousing	0	0	3	4	2	0	9	1
Transitional Housing	0	0	20	6	13	0	39	42
North & South Totals	136	29	70	24	44	0	303	476

Demand (Unmet Need)

Emergency Shelter	129	80	14	2	5	3	233	
Other Permanent Housing								
Permenant Supportive Housing								
Rapid Rehousing								
Transitional Housing	52	88	26	16	9	7	198	
Total Housed	181	168	40	18	14	10	431	
Remaining Supply Beds Available	0	0	30	6	30	0	66	
Unsheltered	346	10	55	0	12	0	423	
Additional Needed	346	10	25	0	0	0	381	



St. Louis County Homeless Needs Assessment - South

	Designated Population Beds					Total	Total Beds
	Youth	Youth w/ Children	Veteran	Veteran w/ Children			
Supply Inventory							
Emergency Shelter	7	0	0	0	7	183	
Other Permanent Housing	5	10	0	0	15	461	
Permenant Supportive Housing	22	0	26	0	134	418	
Rapid Rehousing	3	4	2	0	9	68	
Transitional Housing	19	0	10	0	29	128	
South Totals	56	14	38	0	194	1258	



St. Louis County Public Health & Human Services

Improving Lives

Sometimes individuals and communities face challenges that affect their health and quality of life. St Louis County Public Health and Human Services works to prevent those challenges and offers a helping hand when life's obstacles seem insurmountable. We guide people through their challenges and direct them to appropriate resources.

Our goal is to help people achieve a better life. We do this by helping people we serve overcome - or make progress despite - the obstacles blocking their path to self-sufficiency and by working in partnership to improve the health of our entire community.

Vision

A community where all people are safe and healthy.

Mission

To protect, promote, and improve the health and quality of life in St Louis County.

We do this through a diverse set of programs, services, and initiatives that work at all levels and throughout our community.



St. Louis County Public Health & Human Services

- Oversight Authorities: MN Department of Health, Department of Human Services, Department of Children, Youth & Families, Department of Direct Care & Treatment (coming July 1); St. Louis County Board, Community Health Board, Arrowhead Health Alliance (JPA)
- Funding: \$125 million budget; 53% State & Federal Funded
 - \$71 million funds personnel
 - \$52 million funds Operating & Public Aid Expenditures
- Personnel: 710 FTEs
- Contracts: manage 1,000 annually



St. Louis County PHHS Roles

- St. Louis County's role is collaborator and convener; we provide technical assistance and quality assurance across program areas. We seek funding, receive funding, act as fiscal agent, and monitor to ensure money is being spent as intended. We do all this in support of the community partners who serve as the boots on the ground operating shelters and providing direct resources to people.
- Ongoing and one-time funding directly to community providers for capital costs for building and construction and operational costs including staffing, services and rental assistance.
- SLC HHP team coordinates over \$4 million in Federal funds and over \$5 million in State grants annually.
- We center the voices of people with lived experience and are working to advance equity knowing the serious racial disparities. Examples of what we fund: street outreach, staffing at shelters and supportive housing. More information available at: www.stlouiscountymn.gov/HHP
- For people needing assistance, we provide economic supports and other services regardless of their housing status
- Public Health and Human Services also provides child protection and child wellbeing, disability supports, mental health, chemical health and healthcare access, prevention and safety net services.



Our Housing and Homelessness Programs team supports this system through a variety of means including but not limited to:

- Staffing the St. Louis County Heading Home Advisory Committee (*formerly known as the Heading Home Governance Board*),
- Coordinating and facilitating partner meetings,
- Facilitating and supporting grant selection processes (NOFA, OEO, SAHA, LPHA, etc.),
- Review and influence housing tax credit project proposals and ultimately support if meeting priorities, and
- Applying for and coordinating/managing various grants that fill gaps and support the CES overall (e.g. CLI, FHPAP, HSASMI, SUD, UCare Foundation grant, Capacity Building grants, etc.) as well as encouraging and supporting partners to apply – whether that be collaborative or as sole applicants.



St. Louis County Continuum of Care – Heading Home Advisory Council

The CoC Program interim rule (578.5) says:

Representatives from relevant organizations within a geographic area shall establish a CoC for the geographic area to carry out the duties of this part.

What are Relevant Organizations?

...non-profit homeless providers, victim service providers, faith-based organizations, governments, businesses, advocates, public housing agencies, school districts, social service providers, mental health agencies, hospitals, universities, affordable housing developers, law enforcement, organizations that serve homeless and formerly homeless veterans, and homeless and formerly homeless persons.

The CoC is the convening and planning body for a set geographic area responsible for carrying out and implementing the requirements in the Interim Rule.



St. Louis County Continuum of Care – Heading Home Advisory Council

- Promote community-wide commitment to the goal of ending homelessness.
- Provide funding for efforts (via HUD NOFO grant dollars) to house people facing homelessness:
 - Permanent Supportive Housing, Transitional Housing, Rapid Rehousing.
- Promote access to and effective use of mainstream programs by homeless individuals and families.
- Optimize self-sufficiency among individuals and families experiencing homelessness.



SLC Economic and Community Development Department administers Federal HUD Entitlement allocations (outside City of Duluth) for CDBG, HOME, and ESG programs.

- Service providers apply for funding. Applications reviewed and recommended by the CDBG Advisory Committee, the Rural Housing Coalition (the Advisory Committee for the ESG) and the HOME Consortium Advisory Committee to County Board for approval. Once approved, submitted to HUD for approval.
- HUD regulations require Low/Moderate Income Households and areas, and exclusively outside of the City of Duluth (separate entitlement area).
- St. Louis County HRA has funded Supportive Housing projects including Bill's House, Birchwood Apartments, Garfield Square, Steve O'Neil apartments.
- HRA has deferred forgivable loans and grants as well.



Current PHHS Strategies

(from 2021 Environmental Scan/ Community Planning)

- Address the root causes of homelessness and prevent more episodes of homelessness among People of African Heritage, People who are Black or Indigenous, and other People of Color:
 - Example: Lead and support BIPOC communities and people with experience to lead through the Racial Equity and Accountability Project.
- Increase emergency shelter beds or prioritize shelter beds for unsheltered people. Our roles include funding, coordination, support, housing support dollars, technical assistance, cost-neutral transfer:
 - Summary of recent investments available later in presentation.
- Increase permanent supportive housing resources for homeless adults without children, especially those with long histories of homelessness, disabilities, and barriers to securing rental housing:
 - Summary of recent investments available later in presentation.



Feedback from Interviews

(from 2021 Environmental Scan/ Community Planning)

Working well

- Coordinated Entry System
- Landlord Incentive Program
- Innovative use of Existing Funding Resources to Meet Gaps
- Housing Support Cost Neutral Transfer

Areas of focus

- Support partnerships that are having a positive impact on preventing homelessness and increasing housing stability.
- Build a homeless response system that is focused on efficiency and convenience for people interacting with the homeless response system instead of providers.
- Incorporate culturally responsive and person-centered approaches.
- Expand resources for navigation to help people experiencing housing instability to move through the system. Create more permanent supportive housing for singles with high barriers: criminal records, substance abuse history, chronic homelessness, and mental illness.
- Increase mental health crisis management resources.
- Support staff working directly with people experiencing homelessness. Employ more street outreach workers.



SLC PHHS Impact Examples



Community Living Infrastructure (CLI) Grant

- MN DHS Competitive Funding for staff to support Housing Support Quality Assurance and Outreach to expand Housing Support resources
- In 2022, St. Louis County had 23 board and lodge sites and 13 long-term homelessness (LTH) supportive housing providers, providing housing for 911 households. The LTH program grew by 62% in its first year to 261 LTH units and by the end of 2022, was up to 302 units.
- Currently in St. Louis County there are 325 Community based beds and two new expansions in the works that could potentially equate to up to 468 community beds (most of which are LTH) within the next one to two years.
- **The impact of this program equated to 157 individuals moving into permanent housing.** Outreach through CLI **connected with 580 individuals**, with more than half agreeing to navigation services. Additionally, **244 households were assisted with direct assistance** (rent, security deposits, essential furnishing and /or utility set up fees).
- The CLI direct assistance funding equated to \$330,000 and utilized as a funding source of last resort. It was depleted within six months.
- St. Louis County currently has two staff dedicated to supporting these programs and managing the CLI grant, partially funded with this grant.



Cost Neutral Transfer

- In February of 2020, St. Louis County submitted a proposal to reallocate 108 banked supplemental service rate beds to support supplemental services to six emergency shelter providers throughout St. Louis County. The allocation continued over the course of Fiscal Year 2023.
- The full amount of the allocation for Financial Year 2022 for St. Louis County was \$1,889,294.08 The contract between the Department of Human Services and St. Louis County began July 1, 2022.
- St. Louis County proposes to remove an additional 57 beds from our rate 2 banked bed list in order to fund emergency shelter programming in the amount of \$1,001,168. Additions services to be funded include:
 - Churches United in Ministry (CHUM) is requesting \$263,577 to fund emergency shelter operations in Duluth. Funding will help the shelter expand its services to 15 individuals.
 - Lutheran Social Services (LSS) is requesting \$223,646 to help bridge the gap in funding for a new 12 bed emergency shelter in Duluth primarily serving youth.



Reaching Functional Zero for Veterans

- **The St. Louis County (SLC) Continuum of Care (CoC) (MN-509) effectively reached functional zero of their Veteran homeless response system, as of December 2021.** Following extensive community discussions, we believe there are the systems in place to address the needs of any Veteran that experiences homelessness within the community, quickly and effectively.
- Partners that have been integral to the success of this mission include CoC leadership and the CoC Governance Board, the Minneapolis VA Healthcare System (VA), the Minnesota Assistance Council for Veterans (MACV), the Minnesota Department of Veterans Affairs (MDVA), the local County Veterans Service Officers (CVSOs), Coordinated Entry, the St. Louis County Public Health and Human Services Department, and emergency shelters within the community.
- These partnering organizations have formed an Ad Hoc Committee which conducts regular case review and consultation; discusses systemic and individual challenges Veteran's face within the community, and how they can be addressed.
- Coordinated Entry System continues to meet bi-weekly with MACV to review veterans on the registry and work towards housing plans.



Reaching Housing Stability with & for Young People

- In Public Schools: 473 students experienced homelessness according to Minnesota Department of Education data.
- Working across sectors and PHHS services to address youth homelessness.
- Legislative appropriation (2023) for Hennepin & St. Louis County Direct Cash Transfer Pilot project designed by young people with lived experience; includes a research component that could provide a new pathway out of homelessness for youth.
- New State Funding – Local Homeless Prevention Aid – St. Louis County issues a Request for Proposal annually to fund community partners to prevent young people and families from experiencing homelessness and housing instability.



Warming Centers

- Partnership with City of Duluth, CHUM and AEOA north winter of 2019 when shelter capacity was exceeded.
- Initially funded with county dollars and hosted in City location.
- Currently funded by SLC administered Cost Neutral Transfer staffing and Mn DHS Office of Economic Opportunity (OEO) funding direct to providers (CHUM, AEOA).
- In Duluth last winter: Over 600 households sought emergency warming center shelter last year. This is in addition to 24/7 low-barrier, drop-in shelter (78 beds with the average number of guests being 98).
- Thank you to the City for hosting and to the Duluth DTA for transportation solutions.



Street Outreach

- Staffing increased as evidence-based strategy to support people experiencing homelessness.
- Similar to initial co-responder partnership with Duluth Police Department and embedded Social Worker.
- Downtown Business Council added FTE for outreach.
- CHUM doubled and now tripled program: most recent expansion funded with County Opioid Remediation proceeds and now State grant funds.



Housing Stabilization Services

- MN first State to add Housing Stabilization Services to billable Medicaid benefits through CMS Medicaid Plan
- Target population for Housing Stabilization Services are:
 - People with disabilities including mental illness and substance use disorder, who are homeless or at risk of becoming homeless living in institutions or other segregated settings (or at risk of living in those settings)
- Purpose:
 - Support an individual's transition to housing in the community
 - Increase long-term stability in housing in the community, and
 - Avoid future periods of homelessness or institutionalization.
- SLC PHHS keeps a list of HHS providers on our website who are currently taking referrals.
- SLC PHHS HHP team hosts a monthly HSS provider meeting where MCOs and DHS attend to address questions, support one another etc. DHS is currently working to hire more people as the number of plans, assessments and claims etc. are far surpassing what they had expected, creating significant delays in billing and services being able to be implemented.



St. Louis County ARPA Investments

- \$7.3 million investment in ARPA Housing, including \$3.1 million in shelter; over \$3.6 million of this invested in Duluth

Category	Address	Amount committed	Organization/Project
Housing for those experiencing homelessness	Duluth	\$1,774,000.00	Plover Place
Housing for those experiencing homelessness	Hibbing	\$135,000.00	Star of the North
Housing rehab	Duluth	\$85,000.00	Community Action Duluth Construction Program
Housing rehab	Duluth	\$108,534.00	YWCA - Spirit Valley Location Repairs
New Housing	Duluth	\$150,000.00	Skyridge Flats
New Housing (Temporary)	Virginia	\$1,400,000.00	Range Transitional Housing
Shelter	Duluth	\$125,000.00	Stepping On Up Peace Church Renovation
Shelter	Hibbing	\$1,869,000.00	AEOA Hibbing (Home on the Range - Homeless Shelter)
Shelter	Duluth	\$625,000.00	AICHO Shelter Renovation
Shelter	Duluth	\$250,000.00	Stepping on Up - Phase 1
Shelter Staffing	Duluth	\$247,200.00	CHUM Warming Center Staffing Needs
Housing Improvements for seniors	Northern SLC	\$300,000.00	AEOA Aging in Place
Shelter	Duluth	\$250,000.00	Damiano 3rd Floor Renovation

Note: Damiano 3rd floor funded at \$1.4 m level with other county funds



SLC Dashboard in Development



SLC Economic and Community Development Dashboard Development *Completed* (A)

1 COMPLETED					
	Name	Date	Units	Status	County Funds
A. Market & Workforce					
	Zenith Historic Old Central High School	2024	125	Completed	TIF
	Grindstone	2023	33	Completed	
	Open Arms Senior Living	2022	24	Completed	
	Lincoln Park Flats	2022	75	Completed	PACE
	First Street Lofts	2022	47	Completed	TAF
	Enger Lofts & Hotel	2021	44	Completed	PACE
	Morgan Park Estates	2021	96	Completed	
	Leijona	2021	33	Completed	County Sold
	Vue at Bluestone	2021	193	Completed	TIF
	Zvago Lake Superior	2020	51	Completed	
	Thunderbird Wren	2020	40	Completed	TF Land
	Ramsey Village Townhomes Phase V	2020	24	Completed	
	The Bluffs of Duluth	2020	35	Completed	
	Board of Trade	2019	84	Completed	TIF
	City View Flats	2019	106	Completed	TAF
	Kenwood Village	2018	83	Completed	
	District Flats	2018	72	Completed	TAF
	Grand Avenue Estates	2018	67	Completed	
	Capstone Apartments	2018	31	Completed	TAF
	Capstone Apartments	2018	50	Completed	TAF
			1,313		



SLC Economic and Community Development Dashboard Development *Completed* (B)

B. Supportive and Affordable Housing			
Plover Place	2024	24 Completed	ARPA
Brewery Creek	2024	52 Completed	TIF
Pillars of Hermantown	2023	105 Completed	
Fairmount Cottage Homes	2023	18 Completed	
St. Francis Apartments	2022	22 Completed	County
Decker Dwellings	2021	42 Completed	TF Land
Birchwood Apartments	2021	30 Completed	County HRA
Garfield Square	2020	50 Completed	County HRA
Greysolon Apartments	2020	150 Completed	
O'Neil Apartments	2017	50 Completd	
		543	



SLC Economic and Community Development Dashboard Development *In Development* (A)

Under Construction & 2Planned				
Name	Date	Units	Status	
A. Market & Workforce				
Lakeview 333	2025	210	Under Construction	
London East Townhomes	2025	26	Under Construction	
Lake Superior Student Housing	2026	100	Planned	
Arrowhead Acres	2025	275	Under Construction	
The Residence	2025	80	Planned	
Arris Duluth	2024	195	Under Construction	
Incline Village	2025	1,300	Planned	TIF
1221 CW Flats	2025	16	Under Construction	
Cottage Hill	2025	14	Under Construction	
RiverWest	2024	130	Under Construction	
Amity Bluffs	2025	14	Under Construction	
Western Woods	2025	15	Under Construction	
Ordean Building	2025	40	Planned	
		2,415		



SLC Economic and Community Development Dashboard Development *In Development* (B)

B. Supportive and Affordable Housing				
627 E 4th Street Redevelopment	2025	16	Under Construction	
Urbane Duluth	2025	40	Under Construction	
Skyridge Flats Senior Apartments	2024	70	Planned	
Wadena West	2025	60	Under Construction	SAHA & TIF
Welch Place	2026	30	Planned	TIF
Brae View	2026	72	Planned	TIF
Harbor Highlands-Phase VI Townhomes	2025	40	Under Construction	
Harbor Highland 2nd Addition	2026	29	Planned	
		357		



SLC Economic and Community Development Dashboard Development *Completed & Development*

Shelters & Transitional Housing			
Name	Date	Units	Status
A. Emergency Shelter			
American Indian Community Housing Org		10	Completed
Bob Tavani House		3	Completed
Churches United in Ministry (CHUM)		72	Completed
Churches United in Ministry (CHUM)		26	Completed
Life House		10	Completed
Loaves and Fishes		9	Completed
Loaves and Fishes		10	Completed
Lutheran Social Service of Minnesota (LSS)		4	Completed
Lutheran Social Service of Minnesota (LSS)		4	Completed
Safe Haven Shelter for Battered Women		39	Completed
		187	
B. Rapid Re-Housing			
CHUM Rapid Re-Housing		28	Completed
Life House		7	Completed
Minnesota Assistance Council for Vet (MACV)		2	Completed
The Salvation Army Northern Division		31	Completed
		68	
C. Transitional Housing			
Center City Transitional Housing		36	Completed
Guiding Star's Women's Center		4	Completed
Life House Northern Lights		8	Completed
Life House Sol House		10	Completed
Lincoln Park Resource Center The Hostel		7	Completed
Lutheran Social Services Renaissance Program		8	Completed
MACV Duluth Veterans Place		5	Completed
MACV Sill House		5	Completed
The Salvation Army Catherine Booth Residence		41	Completed
YWCA of Duluth		4	Completed
		128	

Developments in Progress:

- CHUM Shelter Expansion
- AICHO Expansion
- Another Door
- Mission Engagement Center (drop in/ warming center capacity)



	Individual	Family	Designated Population Beds				Total	Total Beds
			Youth	Youth w/ Children	Veteran n	Veteran w/ Children		
Supply Inventory								
Emergency Shelter	0	0	7	0	3	0	10	56
Other Permanent Housing	0	0	5	10	0	0	15	138
Permanent Supportive Housing	136	29	35	4	26	0	230	239
Rapid Rehousing	0	0	3	4	2	0	9	1
Transitional Housing	0	0	20	6	13	0	39	42
North & South Totals	136	29	70	24	44	0	303	476

Demand (Unmet Need)

Emergency Shelter	129	80	14	2	5	3	233	
Other Permanent Housing								
Permenant Supportive Housing								
Rapid Rehousing								
Transitional Housing	52	88	26	16	9	7	198	
Total Housed	181	168	40	18	14	10	431	
Remaining Supply Beds Available	0	0	30	6	30	0	66	
Unsheltered	346	10	55	0	12	0	423	
Additional Needed	346	10	25	0	0	0	381	



Our Work Continues

- Person-centered, trauma informed, harm reduction, housing-first principles
 - SLC PHHS does more than housing and homelessness services.
- Public-Private and City-County partnerships are required.
- Partners vary by housing and service type across the continuum.
- Housing gaps are really and inter-related across the continuum.
- Significant impact of one-time Federal Funds (CARES, ARPA).

Contact information:

Linnea Mirsch, Director, Community & Human Services

mirschl@stlouiscountymn.gov

