

# Keene Creek Resiliency

-----

## Irving Park Stormwater Basin

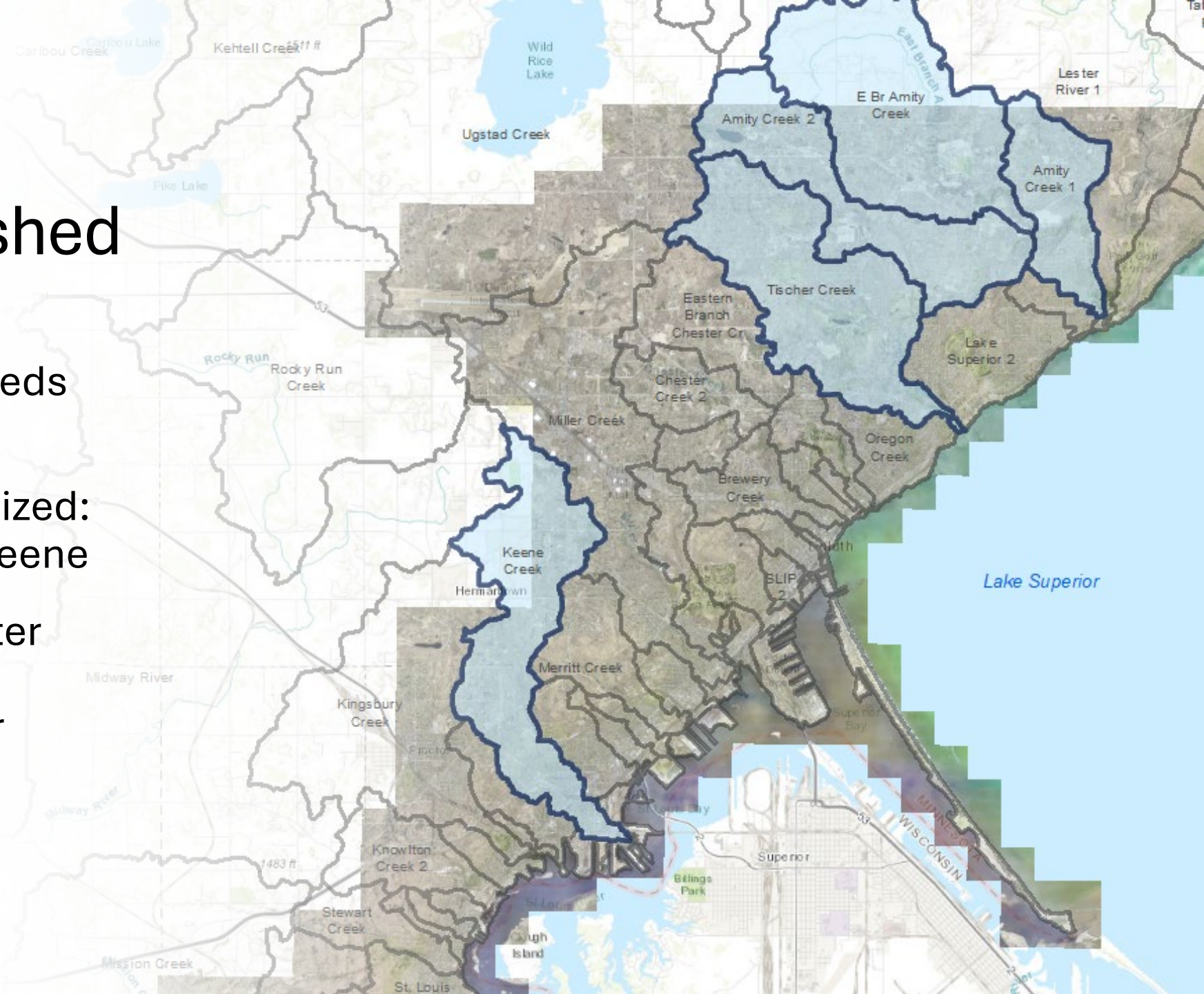
Ryan Granlund & Allison Brooks  
City of Duluth

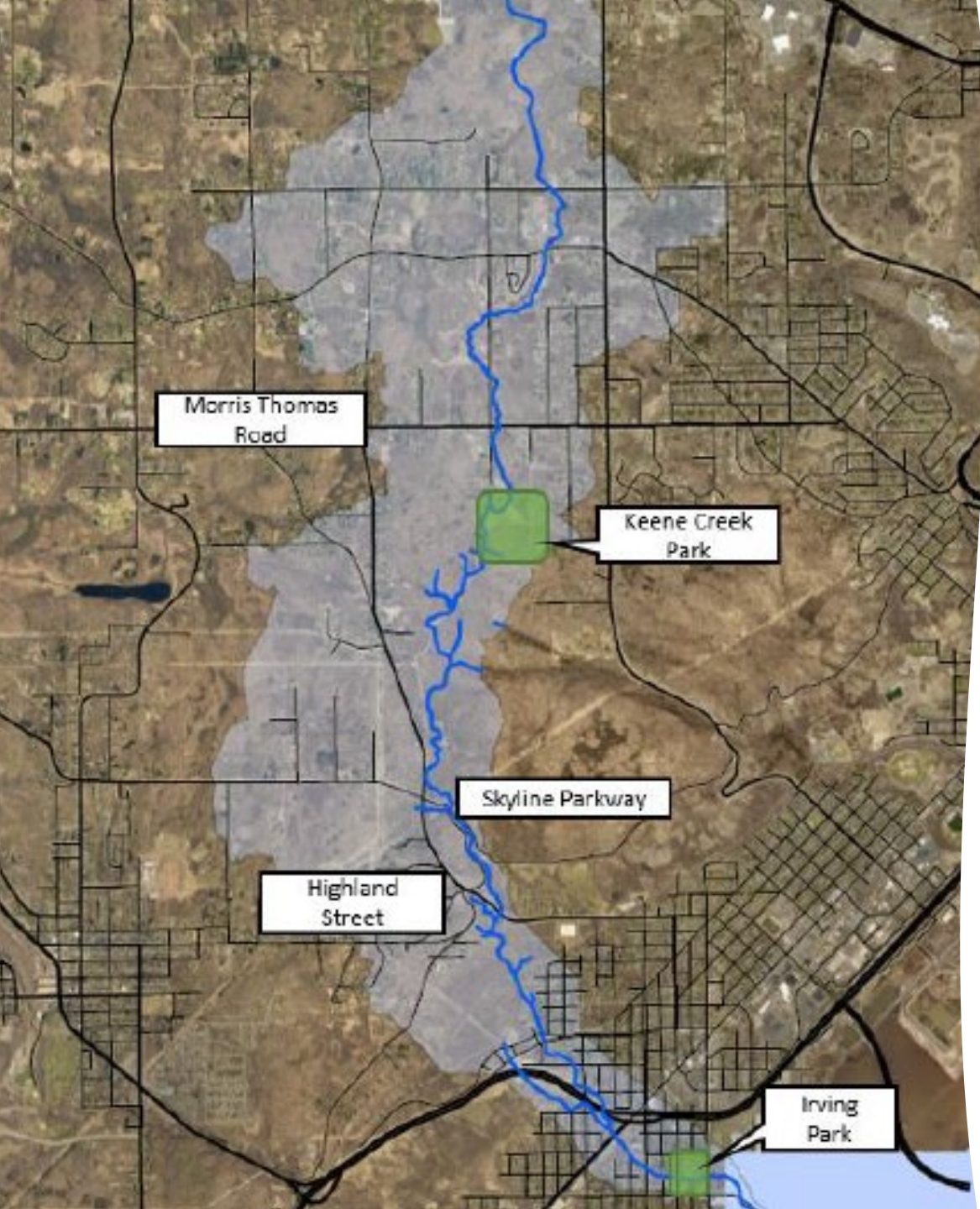
Irving Park Community Club  
August 26, 2025



# Keene Creek: A Priority Watershed

- There are 42 watersheds in Duluth!
- 3 are currently prioritized: Amity, Tischer, and Keene
- Prioritized due to water quality, funding availability, & partner priorities.





# Improving Keene Creek

- Keene Creek stretches from Hermantown to Grassy Point, cold water and habitat – Trout Stream
- The creek is impaired for E. Coli & chloride
  - City and other area MS4's must implement actions that reduce pollutant loads
- 2020 E. Coli Source Assessment Study
- Trout Unlimited and South St. Louis Soil & Water Conservation District restored ~1,500 feet of creek to improve trout habitat
- MN DNR is developing a “Roadmap to Resilience” in 2025
- Future Stormwater Basin at 59<sup>th</sup> Ave W
- Irving Stormwater Basin!

# Stormwater: Where It Flows, Everything Goes

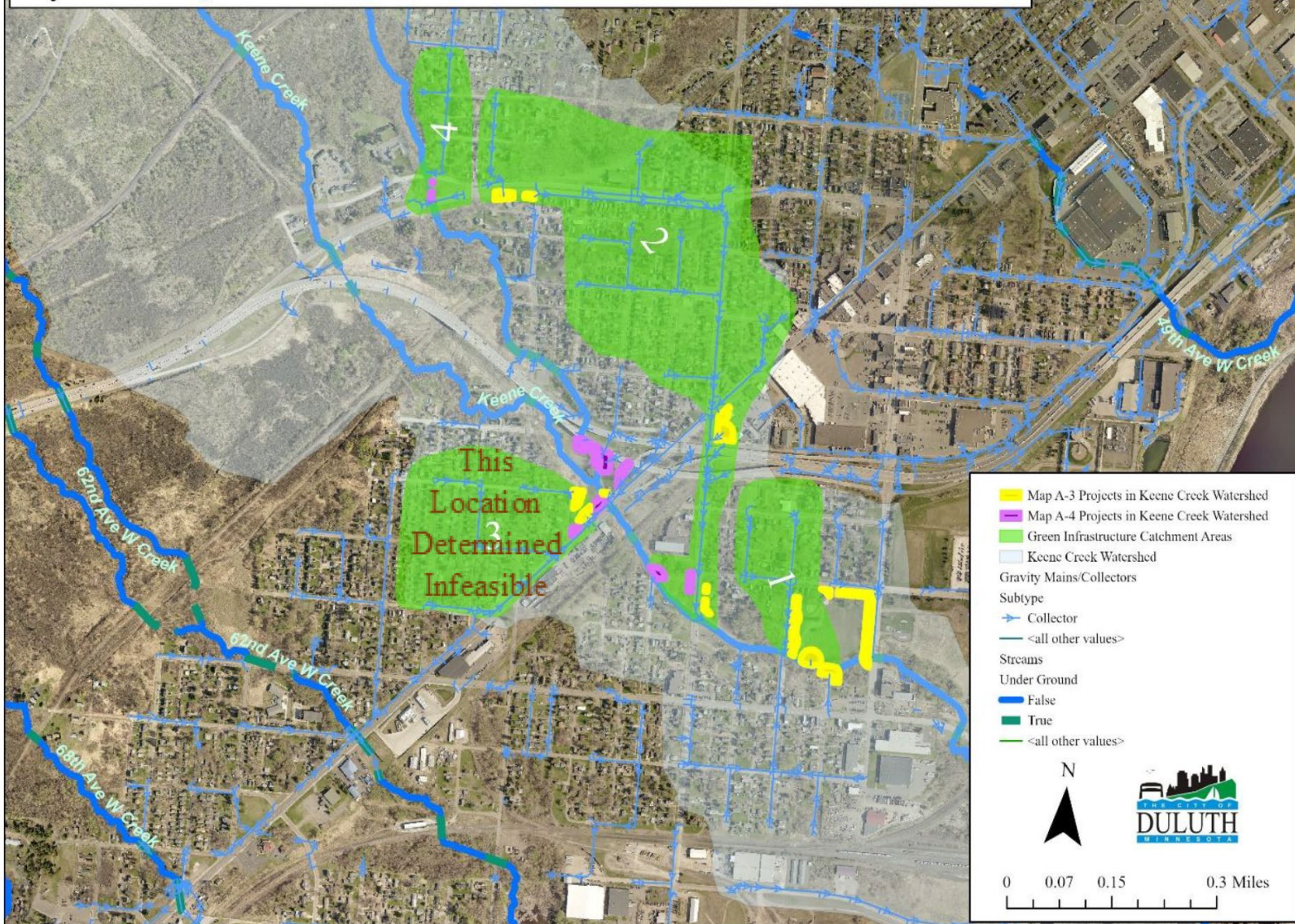
When it rains, snows, or sleet, water hits hard surfaces and takes anything on that surface with it, through drains, pipes, and ditches to local rivers, lakes, and streams.



## Where Stormwater Flows, Everything Goes



Depiction of Green Infrastructure Projects With Associated Catchment Areas  
Keene Creek Resiliency Report  
City of Duluth, Minnesota



# Stormwater Management

- Stormwater – rain and snowmelt runoff is carried to nearby discharge points via catch basins, pipes and culverts/ditches.
- Stormwater management helps reduce runoff and improve water quality before discharge to receiving waters.
- Irving Park Basin will manage approx. 17.5 acres of stormwater (see left)

# Irving Park Stormwater Basin

- Capture stormwater and filter it through plants, rock, and soil.
- Filtration will remove pollutants and cool down the water, improving water quality!
- Filter amended with Bio-Char and Iron-Enhanced Sand to remove additional pollutants.
- Underground pre-treatment to minimize amount of maintenance needed in vegetation area

 Approximate Construction Zone

# Project Details

- Will be mostly completed September 2025
  - Final vegetation install will happen in Spring of 2026
  - Contractor to maintain vegetation until 2028 to provide best chance for establishment

## Funding Sources

- Great Lakes Sediment & Nutrient Reduction Program
- Great Lakes Restoration Initiative



**US Army Corps  
of Engineers**



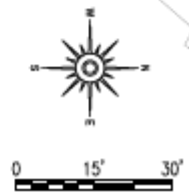


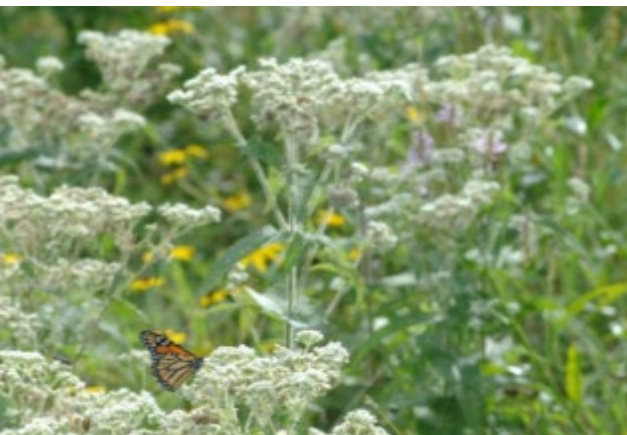
PERENNIAL PLANTS	DECIDUOUS PLANTS	QTY
BLUE LOBELIA	LOBELIA SIPHILITICA	381
PURPLE-STEMMED ASTER	SYMPHYOTRICHUM PUNICEUM	381
BLUE VERVAIN	VERBENA HASTATA	381

DECIDUOUS TREE 1.25" CAL CONT		
	SPECIES	QUANTITY
1	PRAIRIE EXPEDITION ELM	2
2	RIVER BIRCH	3
3	RED OAK	2
4	JEFFERSON ELM	1

S 57<sup>th</sup> Ave W

Keene Creek





# Getting Established

- Basin will be planted with a variety of native species
  - NE MN seed mix in basin footprint, planted with over 2,000 wildflower plugs
- Contractor maintenance planned through 2028 to remove invasives – will help nurture it
- It will take some time to get established



# ENGINEERING

[City of Duluth](#) / [Engineering](#) / [Sales Tax Street Projects](#) / [2025 Sales Tax Projects](#)

## Other Work in the Area: Street Preservation

### S 57<sup>th</sup> Ave W

- Sinkholes due to undersized & failing structures below ground
- Funded through the Street Preservation Program – Street Sales Tax

## What's planned?

- New storm sewer & utility work
- Repaving the street

## What's happening?

- Sawcutting is complete
- Removals & utility work waiting for Irving Basin completion
- **Work scheduled for the week of September 22, 2025**

# Thank you!

## Irving Park Stormwater Basin

Ryan Granlund – [rgranlund@DuluthMN.gov](mailto:rgranlund@DuluthMN.gov)

Allison Brooks – [abrooks@DuluthMN.gov](mailto:abrooks@DuluthMN.gov)

Project Updates at  
[duluthmn.gov/parks/parks-planning/progress-in-the-parks/irving-park-stormwater/](https://duluthmn.gov/parks/parks-planning/progress-in-the-parks/irving-park-stormwater/)

