





Purchasing Division
Finance Department

Room 120
411 West First Street
Duluth, Minnesota 55802

 218-730-5340

 purchasing@duluthmn.gov

Addendum No. 3
Solicitation 26-99071
Palm Street Smart Pond

NOTICE

This addendum services to notify all bidders of the following changes to the solicitation documents:

GENERAL

1. Descriptions of changes to drawings are for reference only and provide only a general overview of changes made. It is the Contractor's responsibility to fully assess and provide the specific requirements of the Work on all Plan sheets regardless of the description of sheet change(s) provided herein.

BID FORM

Quantities of the following items changed in the bid form:

COMMON TOPSOIL BORROW
FERTILIZER TYPE 3
ROLLER EROSION PREVENTION CATEGORY 20
RESTORATION PLANTING ZONE 1 – AQUATIC/TRANSITIONAL LEDGE
RESTORATION PLANTING ZONE 2 –UPLAND
RESTORATION PLANTING ZONE 3 –WILLOW STAKE/BUNDLES
RESTORATION PLANTING ZONE 4 –TURF SOD
SEEDING
SEED NORTHEAST ROADSIDE

PERENNIAL 4" CONT bid item was removed from bid form.

DRAWINGS

1. Drawing changes to the STATEMENT OF ESTIMATED QUANTITIES are as follows:
 - a. Sheet 4; Delete Sheet 4 in its entirety and replace with the attached revised Sheet 4.
2. Drawing changes to the CONSTRUCTION CHARTS are as follows:
 - a. Sheet 7; Delete Sheet 7 in its entirety and replace with the attached revised Sheet 7.
3. Drawing changes to the LANDSCAPE PLANS are as follows:
 - a. Sheet LA01; Delete Sheet LA01 in its entirety and replace with the attached revised Sheet LA01.

ADDENDUM #3, February 3, 2026
Palm Street Smart Pond
City Project # 2208

4. Drawing changes to the LANDSCAPE PLANS are as follows:
 - a. Sheet LA02; Delete Sheet LA02 in its entirety and replace with the attached revised Sheet LA02.

5. Drawing changes to the RETAINING WALL PLANS are as follows:
 - a. Add sheets RW09A, do not delete RW09

SPECIFICATIONS

1. SP-51, (2575) RESTORATION PLANTING ZONE 2 – UPLAND/SEED AND PLUGS is hereby amended as follows:

S-51.2 MATERIALS

- A. Seed: Provide MnDOT Seed Mixture 2575.608 SEED NORTHEAST ROADSIDE for permanent turf establishment. Seed at a rate of 26 lbs per acre.

S-51.4 CONSTRUCTION REQUIREMENTS

- E. Seeding: Apply seed at a rate of 26 lbs per acre.

S-51.5 METHOD OF MEASUREMENT

All subsoiling, soil bed preparation, topsoil and other soil amendments, seeding, plugs, fertilizer, watering, erosion control materials, mulch, and protections shall be included in the price for RESTORATION PLANTING ZONE 2 – UPLAND/SEED AND PLUGS. Measure seeding by the area seeded and compute area directly to pounds using set application rate of 26 lbs/acre, regardless of the seed mixture or quantity of seed used. Measure planting area for plugs to be placed at 18” on center within entire restoration zone square footage. Areas reseeded by order of the Engineer, after the original seeding of the area was accepted, will be measured and added to the area originally seeded.

CONTRACTOR QUESTIONS

1. **Question:** With a project (Bidding) start date of March 1, we were trying to investigate to determine if Seasonal Road Restrictions would have limitations on the project. We couldn't find any City Map with a reference.

E. Palm Street
S. Blackman

Answer: The City goes by MNDOT's Seasonal Road Restrictions. They usually send out a message when restrictions are put in place or lifted. Refer to MNDOT's website.

2. **Question:** Does the steel pipe need to be coated?

Answer: Yes, the pipe needs to be coated with fusion bonded Epoxy.

3. **Question:** Can you provide more clarification on the Haul and Dispose of Contaminated Material bid item? Is excavation included in this item, or is the excavation of this material part of

ADDENDUM #3, February 3, 2026
Palm Street Smart Pond
City Project # 2208

“Excavation-Muck”? Have you considered measuring this item by the ton with scale tickets at landfill as an easier way to track than surveying?

Answer: The Haul and Dispose of Contaminated Material bid item includes loading, hauling and disposing of contaminated materials. Excavation is not included in the Haul and Dispose of Contaminated Material bid item. Excavation is paid for in the applicable excavation bid item. Material testing of excavated material will be performed by others. The Haul and Dispose of Contaminated Material bid item will be measured in CU YD per the plan and spec.

4. **Question:** Can you clarify the sheet pile and cap material properties for the project? Special Provisions call out the sheet pile to be A572 – Gr. 50. Plans call out on sheet RW01 (notes) (Weathering Steel). Please note Sheet Pile Cap is called out as Spec 3306 on sheet RW09.

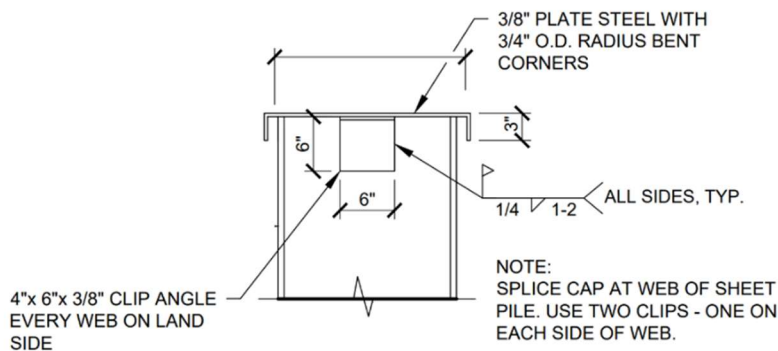
Answer: Sheetpile shall be weathering steel, pile cap to meet Spec. 3306.

5. **Question:** Sheet Pile Cap Sizing: Drawing RW09, Sheet Pile Cap Detail
Would a wider sheet pile cap be allowed? In our experience the sheet pile cap should be oversized 6". Sheets installed with templates still tend to move after the template is removed. The additional cap size will allow for a better structurally and visually installed cap.

Answer: Oversized cap may be used.

6. **Question:** Sheet Pile Cap Welding: Drawing RW09, Section B-B

Would an alternate pile cap connection be allowed? Installing cap directly to the sheet pile can be difficult as voids between the cap and sheet will be present. We've had much better results connecting the sheet pile to the cap with a piece of angle iron (see below for example).



Answer: Alternate pile cap connection may be allowed with prior approval from Engineer. Ideally, there isn't a significant gap from sheet to sheet. The sheets may be left high and cut to height.

7. **Question:** Can alternative fence details be used?

Answer: See sheet RW09A for an alternate fence design from that on sheet RW09, either system will be accepted.

8. **Question:** The specs say "Restoration Planting Zone 2 - Upland" is to be seeded with "Northern Boulevard" seed mix. Can you clarify if this is to be seeded with "Northeast Roadside" instead?

ADDENDUM #3, February 3, 2026
Palm Street Smart Pond
City Project # 2208

Answer: Seed Northeast Roadside shall be used in Restoration Planting Zone 2-Upland and applied at a rate of 26 lbs/acre.

9. **Question:** It seems like the items contained within Restoration planting Zones 1, 2, and 3 are listed within items "perennial 4" cont", "Rolled erosion prevention cat 20", "Seeding", "Seed northeast roadside" and "Seed wet ditch". Are these redundant bid items or can you clarify what is to be bid on within the planting zones? Besides the willow wattles and live stakes.

Answer: Restoration Planting Zones 1, 2 and 3 include the following: Subsoiling, soil bed prep, planting soil and other soil amendments (beyond 4" topsoil borrow), seeding, perennial plugs, plug planting, willow stakes & bundles, fertilizer, watering, and hardwood mulch. The required 4" of topsoil borrow and rolled erosion prevention in planting zones are paid as separate bid items. Perennial 4" cont. bid item was removed and perennial plugs are included in the planting zones. There are areas outside the planting zones that will be seeded with NE Roadside and Wet Ditch seed. The seed, seeding and fertilizer for these areas are paid as separate bid items. See revised plan sheets.

10. **Question:** Can you verify full inspection, maintenance and warranty requirements for landscaping? On LA02 it says to refer to specs for them, but the specs do not outline any maintenance, warranty requirements.

Answer: Follow MnDOT standard specification 2571 for plant maintenance and establishment period, replacement requirements, and acceptance of the work.

Please acknowledge receipt of this Addendum by checking the acknowledgement box within the www.bidexpress.com solicitation.

Posted: **February 5, 2026**

STATEMENT OF ESTIMATED QUANTITIES

NOTES	CHART	SHEET NO.	ITEM NO.	ITEM DESCRIPTION	UNIT	BASE BID QUANTITY
			2021.501	MOBILIZATION	LUMP SUM	1
1			2101.501	CLEARING AND GRUBBING	LUMP SUM	1
	B	5	2104.502	REMOVE DRAINAGE STRUCTURE	EACH	8
	A	5	2104.502	SALVAGE SIGN	EACH	2
	A	5	2104.503	SAWING BITUMINOUS PAVEMENT (FULL DEPTH)	LIN FT	140
3	B	5	2104.503	REMOVE PIPE CULVERTS	LIN FT	160
3	B	5	2104.503	REMOVE PIPE SEWERS	LIN FT	332
17	A	5	2104.503	REMOVE CURB AND GUTTER	LIN FT	1 127
17	A	5	2104.504	REMOVE CONCRETE WALK	SQ YD	21
	A	5	2104.504	REMOVE BITUMINOUS PAVEMENT	SQ YD	2 639
	A	5	2104.504	REMOVE BITUMINOUS WALK	SQ YD	937
	I	7	2106.507	EXCAVATION - COMMON (P)	CU YD	526
	I	7	2106.507	EXCAVATION - MUCK	CU YD	17 536
	I	7	2106.507	GRANULAR EMBANKMENT (CV) (P)	CU YD	88
	I	7	2106.507	SELECT GRANULAR EMBANKMENT MOD 7% (CV) (P)	CU YD	224
	I	7	2106.507	COMMON EMBANKMENT (CV)	CU YD	71
	I	7	2106.607	HAUL & DISPOSE OF CONTAMINATED MATERIAL	CU YD	4 384
	C	5	2108.504	GEOTEXTILE FABRIC TYPE 10	SQ YD	529
	I	7	2118.507	AGGREGATE SURFACING CLASS 5 (CV)	CU YD	43
	I	7	2211.507	AGGREGATE BASE (CV) CLASS 5 (P)	CU YD	341
2	C	5	2360.509	TYPE SP 9.5 WEARING COURSE MIXTURE (3,C)	TON	643
2	C	5	2360.509	TYPE SP 12.5 NON WEARING COURSE MIXTURE (3,C)	TON	475
	RW	RW01	2402.508	STRUCTURAL STEEL (3306)	POUND	61 944
	RW	RW01	2411.602	CONSTRUCT PIPE PENETRATION A	EACH	2
	RW	RW01	2411.602	CONSTRUCT PIPE PENETRATION B	EACH	4
18			2451.507	GRANULAR BACKFILL (CV)	CU YD	200
	RW	RW01	2452.618	STEEL SHEET PILING (PERMANENT)	SQ FT	64 591
	E	6	2501.502	15" RC PIPE APRON	EACH	1
	E	6	2501.502	24" RC PIPE APRON	EACH	2
	E	6	2501.502	48" RC PIPE APRON	EACH	2
	E	6	2501.502	51" SPAN RC PIPE-ARCH APRON	EACH	4
11	E	6	2501.503	51" SPAN RC PIPE-ARCH CULVERT CLASS IIIA	LIN FT	164
	E	6	2501.602	TRASH GUARD FOR 15" RC PIPE APRON	EACH	1
	E	6	2501.602	TRASH GUARD FOR 30" RC PIPE APRON	EACH	1
	C	5	2502.503	4" PERFORATED TP PIPE DRAIN	LIN FT	262
11	F	6	2503.503	15" RC PIPE SEWER CLASS III	LIN FT	614
11	F	6	2503.503	18" RC PIPE SEWER CLASS III	LIN FT	370
11	F	6	2503.503	24" RC PIPE SEWER CLASS III	LIN FT	308
11	F	6	2503.503	30" RC PIPE SEWER CLASS III	LIN FT	31
11	F	6	2503.503	48" RC PIPE SEWER CLASS III	LIN FT	115
	F	6	2503.602	CONNECT TO EXISTING STORM SEWER	EACH	3
	F	6	2503.603	24" HDPE PIPE SEWER-DIRECTIONAL DRILLED	LIN FT	699
14		32	2504.604	3" POLYSTYRENE INSULATION	SQ YD	35
	F	6	2506.502	CASTING ASSEMBLY	EACH	17
		22, 23	2506.502	ADJUST FRAME & RING CASTING	EACH	2

(P) DENOTES PLAN QUANTITY

STATEMENT OF ESTIMATED QUANTITIES

NOTES	CHART	SHEET NO.	ITEM NO.	ITEM DESCRIPTION	UNIT	BASE BID QUANTITY
12	F	6	2506.503	CONSTRUCT DRAINAGE STRUCTURE DESIGN F	LIN FT	70.9
12	F	6	2506.503	CONSTRUCT DRAINAGE STRUCTURE DESIGN H	LIN FT	6.7
12	F	6	2506.503	CONSTRUCT DRAINAGE STRUCTURE DESIGN 72-4020	LIN FT	21.3
12	F	6	2506.503	CONSTRUCT DRAINAGE STRUCTURE DESIGN 48-4020	LIN FT	67.1
12	F	6	2506.602	CONSTRUCT DRAINAGE STRUCTURE DESIGN SPECIAL 1	EACH	1
12	F	6	2506.602	CONSTRUCT DRAINAGE STRUCTURE DESIGN SPECIAL 2	EACH	1
12	F	6	2506.602	CONSTRUCT DRAINAGE STRUCTURE DESIGN SPECIAL 3	EACH	1
		SC01-SC04	2506.601	SMART POND CONTROL SYSTEM	LUMP SUM	1
15	F	6	2506.602	CONNECT INTO EXISTING MH OR CB	EACH	2
	F	6	2506.602	CONCRETE ENCASED CASTING COLLAR	EACH	3
9	E, RW	6, RW01	2511.507	RANDOM RIPRAP CLASS II	CU YD	1 881
9	E	6	2511.507	RANDOM RIPRAP CLASS III	CU YD	52.2
	E, G, RW	6, 7, RW01	2511.504	GEOTEXTILE FILTER TYPE 7	SQ YD	6 890
20	G	7	2515.504	ARTICULATED BLOCK MAT OPEN CELL TYPE A	SQ YD	1 173
	C	5	2521.518	4" CONCRETE WALK	SQ FT	68
	C	5	2521.518	6" CONCRETE WALK	SQ FT	225
	C	5	2531.503	CONCRETE CURB AND GUTTER DESIGN B624	LIN FT	1 126
	C	5	2531.504	8" CONCRETE DRIVEWAY PAVEMENT	SQ YD	27
	C	5	2531.618	TRUNCATED DOMES	SQ FT	12
	D	5	2540.602	INFORMATION SIGN	EACH	1
	H	7	2540.603	LANDSCAPE EDGER	LIN FT	910
			2550.601	ELECTRICAL SERVICE	LUMP SUM	1
16	RW	RW01	2557.502	VEHICULAR GATE DESIGN SPECIAL-SINGLE	EACH	1
	RW	RW01	2557.503	WIRE FENCE DESIGN SPECIAL VINYL COATED	LIN FT	1 802
7			2563.601	TRAFFIC CONTROL	LUMP SUM	1
	D	5	2564.502	INSTALL SIGN	EACH	2
	H	7	2571.502	DECIDUOUS TREE 2" CAL CONT	EACH	41
	H	7	2571.502	DECIDUOUS TREE 1.5" CAL CONT	EACH	21
	H	7	2571.502	DECIDUOUS SHRUB 2" HT CONT	EACH	263
5, 10			2573.501	STABILIZED CONSTRUCTION EXIT	LUMP SUM	1
4, 10, 13	G	7	2573.502	STORM DRAIN INLET PROTECTION	EACH	14
	G	7	2573.502	CULVERT END CONTROLS	EACH	4
10, 13	G	7	2573.503	SILT FENCE, TYPE HI	LIN FT	432
			2573.601	TEMPORARY STREAM DIVERSION SYSTEM	LUMP SUM	1
	G	7	2573.602	ROCK DITCH CHECK	EACH	2
6	H	7	2574.507	COMMON TOPSOIL BORROW	CU YD	425
6	H	7	2574.508	FERTILIZER TYPE 3	POUND	71
8	H	7	2575.504	ROLLED EROSION PREVENTION CATEGORY 20	SQ YD	3 672
	H	7	2575.523	RAPID STABILIZATION METHOD 3	MGAL	4.62
6	H	7	2575.618	RESTORATION PLANTING ZONE 1 - AQUATIC/TRANSITIONAL LEDGE	SQ FT	9 966
6	H	7	2575.618	RESTORATION PLANTING ZONE 2 - UPLAND	SQ FT	13 876
6	H	7	2575.618	RESTORATION PLANTING ZONE 3 - WILLOW STAKE/BUNDLES	SQ FT	425
6	H	7	2575.618	RESTORATION PLANTING ZONE 4 - TURF SOD	SQ FT	5 353
6, 19	H	7	2575.505	SEEDING	ACRE	0.20
6	H	7	2575.608	SEED NORTHEAST ROADSIDE	POUND	0.73
6	H	7	2575.608	SEED WET DITCH	POUND	3.44
	D	5	2582.503	4" DOUBLE SOLID LINE MULTI-COMPONENT GROUND IN (WR)	LIN FT	865

PLOT DATE: 2/2/2026 5:01:54 PM FILE: G:\244901\240078\500 Drawings\Civil\240078 03.0 SEQ & Notes.dwg

I HEREBY CERTIFY that this plan, specification or report was prepared by me or under my direct supervision and that I am a duly Licensed Professional Engineer under the laws of the State of Minnesota.

MEGAN GOPLIN
PRINTED NAME

Megan Goplin
SIGNATURE

01/12/2026
DATE
53018
LIC. NO.

CITY PROJECT NO. 2208

PALM STREET PERMANENT STORMWATER MANAGEMENT
SYSTEM IMPROVEMENTS

REVISION
01/23/26
02/03/26

STATEMENT OF ESTIMATED QUANTITIES
SHEET NO. 4 OF 47 SHEETS

EROSION CONTROL								G
STATION	LT / RT	GEOTEXTILE FILTER TYPE 7 ^①	ARTICULATED BLOCK MAT OPEN CELL TYPE A	STORM DRAIN INLET PROTECTION	CULVERT END CONTROLS	SILT FENCE, TYPE HI	ROCK DITCH CHECK	REMARKS
		2511 SQ YD	2515 SQ YD	2573 EACH	2573 EACH	2573 LIN FT	2573 EACH	
DRAINAGE ALIGNMENT								
11+00.00 TO 28+85.93	LT / RT	941	1173	2	3	254		
PALM ST ALIGNMENT								
100+41.59 TO 109+35.55	LT / RT			9	1	62	2	
BLACKMAN AVE ALIGNMENT								
200+00.00 TO 201+67.00	LT / RT			3		116		
PROJECT TOTALS		941	1 173	14	4	432	2	

KEYNOTES:

- ① SEE OTHER CHARTS FOR ADDITIONAL QUANTITIES.
- ② ASSUMES 4" TOPSOIL IN ALL SEEDING AND PLANTING ZONES. VOLUME ACCOUNTS FOR VOID RATIO IN ARTICULATED BLOCK MAT AREAS.
- ③ FOR SEEDING AREAS ONLY. SEED, SEEDING AND FERTILIZER IN RESTORATION ZONES IS INCIDENTAL.
- ④ FOR ALL SEEDING AND RESTORATION AREAS WITH SLOPES 1:4 OR STEEPER. NOT REQUIRED IN AREAS WITH RIP RAP, ARTICULATED BLOCK OR SOD.

TURF ESTABLISHMENT AND PLANTINGS																H	
STATION	LT / RT	LANDSCAPE EDGER	DECIDUOUS TREE 2" CAL. CONT	DECIDUOUS TREE 1.5" CAL. CONT	DECIDUOUS SHRUB 2' HT CONT	COMMON TOPSOIL BORROW ^②	FERTILIZER TYPE ^③	ROLLED EROSION PREVENTION CATEGORY 20 ^④	RAPID STABILIZATION METHOD 3	RESTORATION PLANTING ZONE 1 - AQUATIC/TRANSITIONAL LEDGE	RESTORATION PLANTING ZONE 2 - UPLAND	RESTORATION PLANTING ZONE 3 - WILLOW STAKE/BUNDLES	RESTORATION PLANTING ZONE 4 - TURF SOD	SEEDING ^③	SEED NORTHEAST ROADSIDE ^③	SEED WET DITCH ^③	REMARKS
		2540 LIN FT	2571 EACH	2571 EACH	2571 EACH	2574 CU YD	2574 POUND	2575 SQ YD	2575 MGAL	2575 SQ FT	2575 SQ FT	2575 SQ FT	2575 SQ FT	2575 ACRE	2575 POUND	2575 POUND	
DRAINAGE ALIGNMENT																	
20+50.00 TO 28+98.00	LT / RT					31	11	617	0.60				1 313	0.03	0.73		CLEARWOOD DR
PALM ST ALIGNMENT																	
100+42.38 TO 109+37.69	LT / RT	910	41	21	263	378	60	2 916	3.78	9 474	13 114	425	4 040	0.17		3.44	
BLACKMAN AVE ALIGNMENT																	
200+00.00 TO 201+41.61	RT					15		139	0.24	492	762						
PROJECT TOTALS		910	41	21	263	425	71	3 672	4.62	9 966	13 876	425	5 353	0.20	0.73	3.44	

EARTHWORK										I
STATION	LT / RT	EXCAVATION - COMMON	EXCAVATION - MUCK	GRANULAR EMBANKMENT (CV)	SELECT GRANULAR EMBANKMENT MOD 7% (CV)	COMMON EMBANKMENT (CV)	HAUL & DISPOSE OF CONTAMINATED MATERIAL	AGGREGATE SURFACING CLASS 5 (CV)	AGGREGATE BASE (CV) CLASS 5	REMARKS
		(P) 2106 CU YD	2106 CU YD	(P) 2106 CU YD	(P) 2106 CU YD	2106 CU YD	2106 CU YD	2118 CU YD	(P) 2211 CU YD	
DRAINAGE ALIGNMENT										
10+42.54 TO 20+00.00	LT / RT	20	17 536	88		71	4 384			
26+72.83 TO 28+34.66	LT / RT							43		
PALM ST ALIGNMENT										
101+70.00 TO 102+70.00	LT / RT	146			67				48	OVER PIPE TRENCHES A AND I
100+46.35 TO 109+10.45	LT								1	
100+46.35 TO 109+10.45	RT								187	
BLACKMAN AVE ALIGNMENT										
200+00.00 TO 201+67.00	LT / RT	360			157				105	
PROJECT TOTALS		526	17 536	88	224	71	4 384	43	341	

PLOT DATE: 2/2/2026 4:58:49 PM FILE: G:\244\Proj\240078\500 Drawings\Civil\240078 04.0 Charts.dwg

I HEREBY CERTIFY that this plan, specification or report was prepared by me or under my direct supervision and that I am a duly Licensed Professional Engineer under the laws of the State of Minnesota.

MEGAN GOPLIN
PRINTED NAME

Megan Goplin
SIGNATURE

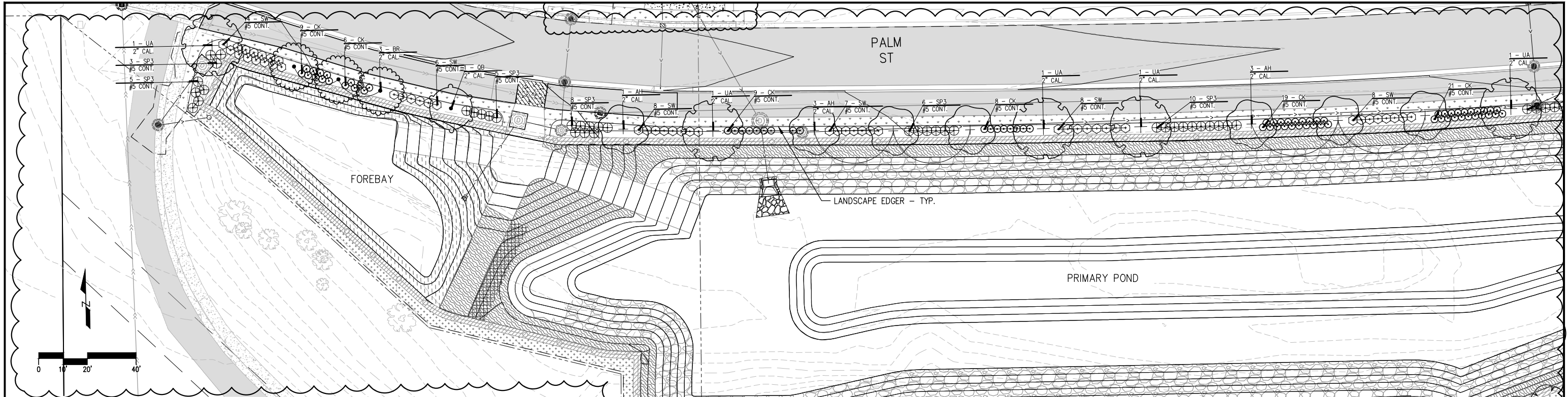
01/12/2026
DATE
53018
LIC. NO.

CITY PROJECT NO. 2208

PALM STREET PERMANENT STORMWATER MANAGEMENT SYSTEM IMPROVEMENTS

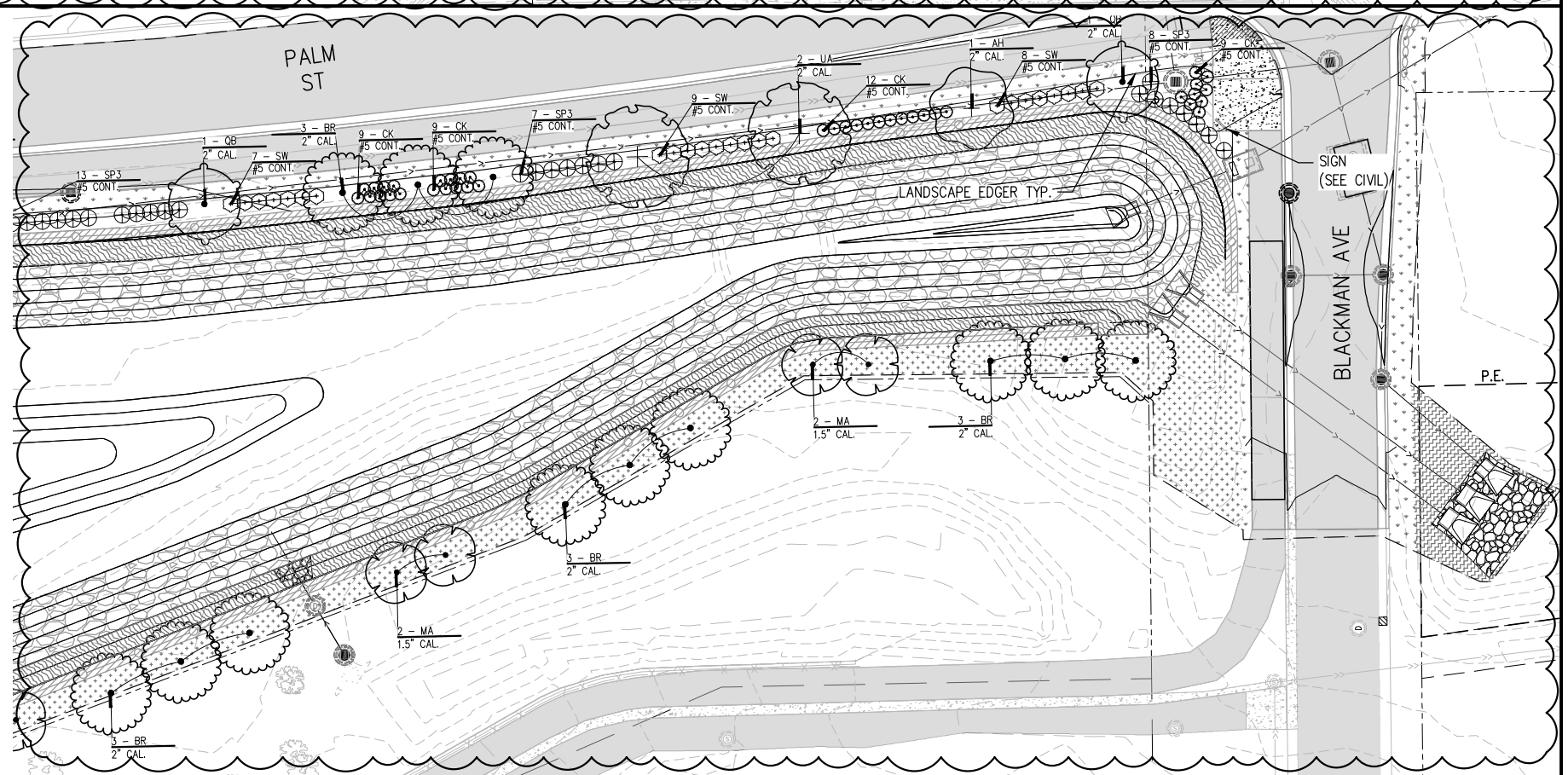
REVISION
△ 02/03/26

CONSTRUCTION CHARTS
SHEET NO. 7 OF 47 SHEETS



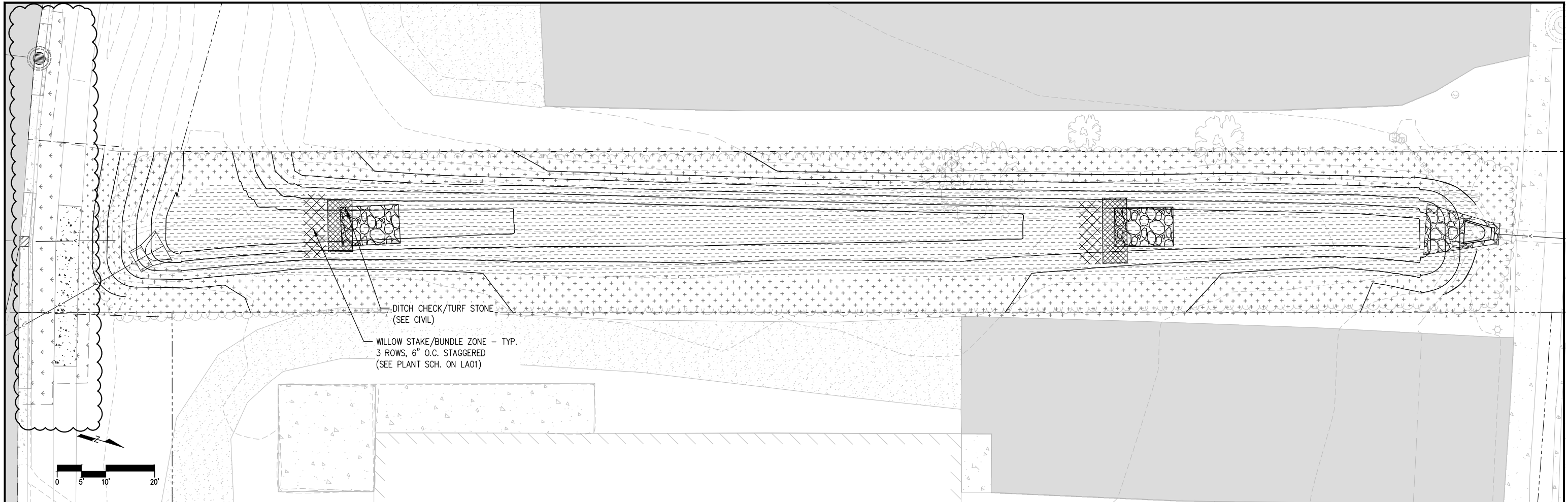
PLANT SCHEDULE

SYMBOL	CODE	QTY	DETAIL	BOTANICAL / COMMON NAME	CONT	
TREES						
	AX	3		Aesculus x 'Bergeson' / Prairie Torch@Buckeye	2" CAL.	
	AH	8		Alnus hirsuta 'Harbin' / Prairie Horizon@Manchurian Alder	2" CAL.	
	AG	7		Amelanchier x grandiflora 'Autumn Brilliance' / Autumn Brilliance Apple Serviceberry	1.5" CAL.	
	BR	15		Betula nigra / River Birch	2" CAL.	
	CM	8		Crataegus x mordenensis 'Toba' / Toba Hawthorn	1.5" CAL.	
	MA	6		Malus x 'DurLawrence' / First Editions@Courageous™ Crabapple	1.5" CAL.	
	OB	7		Quercus bicolor / Swamp White Oak	2" CAL.	
	UA	7		Ulmus x 'Accolade' / Accolade Elm	2" CAL.	
SYMBOL	CODE	QTY	DETAIL	BOTANICAL / COMMON NAME	SIZE	SPACING
SHRUBS						
	CK	111		Cornus sericea 'Kelsey' / Kelsey's Dwarf Red Twig Dogwood	#5 CONT.	36" o.c.
	SP3	65		Salix purpurea 'Nana' / Dwarf Purple Osier Willow	#5 CONT.	48" o.c.
	SW	75		Symphoricarpos x doorenbosii 'White Hedge' / White Hedge Snowberry	#5 CONT.	48" o.c.
SYMBOL	CODE	QTY	DETAIL	BOTANICAL / COMMON NAME	CONT	
GROUND COVERS						
	AT	9,966 sf		Aquatic/Transitional Ledge / Seed and Plugs	See Details	
	TS	5,353 sf		Turf Sod (ADDITIONAL AREAS SHOWN ON EROSION CONTROL PLANS)	See Specifications	
	SS2	13,876 sf		Upland / Seed and Plugs	See Details	
	SS	7,482 sf		Wet Ditch Seed Mix / 2575.608 Seed Wet Ditch	See Specifications	
	WS	425 sf		Willow Stake/Bundle Zone	See Details	



PLOT DATE: 2/2/2026 2:52:50 PM FILE: G:\24\Proj\240078\500 Drawings\LA\240078 12.0 Landscape Plans.dwg

I HEREBY CERTIFY that this plan, specification or report was prepared by me or under my direct supervision and that I am a duly Licensed Professional Engineer under the laws of the State of Minnesota. HEIDI BRINGMAN PRINTED NAME	 SIGNATURE	01/12/2026 DATE	CITY PROJECT NO. 2208	PALM STREET PERMANENT STORMWATER MANAGEMENT SYSTEM IMPROVEMENTS	REVISION 02/03/26	LANDSCAPE PLANS SHEET NO. LA01 OF LA03 SHEETS
		46914 LIC. NO.				



LANDSCAPE NOTES

GENERAL LANDSCAPE NOTES:

1. THIS DRAWING DOES NOT CONSTITUTE AN OFFICIAL SURVEY OF THE SITE. CONFIRM ALL LOCATIONS OF SURFACE AND SUB-SURFACE FEATURES BEFORE BEGINNING INSTALLATION. ADVISE LANDSCAPE ARCHITECT OF ANY DISCREPANCIES.
2. CONFIRM ALL QUANTITIES, SHAPES, AND LOCATIONS OF LANDSCAPE AREAS, AND ADJUST TO CONFORM TO THE SITE CONDITIONS. CONFIRM ANY ADJUSTMENTS WITH THE LANDSCAPE ARCHITECT.
3. VERIFY LOCATIONS OF ALL UNDERGROUND UTILITIES PRIOR TO DIGGING. NOTIFY THE LANDSCAPE ARCHITECT OF ANY CONFLICTS WITH PLANT INSTALLATION.
4. THE CONTRACTOR IS RESPONSIBLE FOR ALL MULCHES AND SOIL QUANTITIES TO COMPLETE THE WORK SHOWN IN THE DRAWINGS. VERIFY ALL QUANTITIES SHOWN ON THE PLANT SCHEDULE.
5. REFER TO SECTION 31 2323 FILL FOR SOIL REQUIREMENTS. DO NOT BEGIN PLANTING OPERATIONS IF SOIL CONDITIONS ARE NOT AS SPECIFIED.
6. REMOVE FROM THE SITE ALL TURF WHICH HAS BEEN REMOVED FOR NEW PLANT BEDS. LONG-TERM STORAGE OF MATERIALS OR SUPPLIES ON-SITE IS NOT ALLOWED. THE PLAN TAKES PRECEDENCE OVER THE PLANT SCHEDULE IF DISCREPANCIES EXIST. ADVISE LANDSCAPE ARCHITECT OF ANY DISCREPANCIES.
7. STAKE TREE AND PLANTING BED LAYOUT IN-FIELD FOR LANDSCAPE ARCHITECT APPROVAL PRIOR TO PLANTING OPERATIONS.

PROTECTIONS

8. AVOID DAMAGING EXISTING TREES. DO NOT STORE OR DRIVE HEAVY MATERIALS OVER TREE ROOTS. DO NOT DAMAGE TREE BARK OR BRANCHES.
9. KEEP PAVEMENTS, FIXTURES AND BUILDINGS CLEAN AND UNSTAINED. ANY DAMAGE TO EXISTING FACILITIES WILL BE REPAIRED AT THE CONTRACTOR'S EXPENSE. KEEP THE PROJECT SITE CLEAR OF CONSTRUCTION WASTES AND DEBRIS.
10. PROVIDE AND MAINTAIN INLET AND PERIMETER EROSION CONTROL BMPs AS SPECIFIED ON CIVIL SHEETS.
11. ALL AREAS OF THE SITE DISTURBED BY CONSTRUCTION WILL BE RESTORED WITH SEED OR SOD UNLESS OTHERWISE NOTED. SEE SPECIFICATIONS FOR TURF RESTORATION REQUIREMENTS.

PLANT MATERIAL

12. PLANT TREE ROOT BALLS FLUSH WITH FINAL GRADE AND THE TOP OF ROOT FLARE EXPOSED, PER PLANTING DETAILS.
13. NO SUBSTITUTIONS OF PLANT MATERIAL WILL BE ACCEPTED UNLESS APPROVED IN WRITING BY THE LANDSCAPE ARCHITECT.
14. THE LANDSCAPE ARCHITECT RESERVES THE RIGHT TO REJECT ANY PLANTS WHICH ARE DEEMED UNSATISFACTORY.
15. ALL PLANTING STOCK SHALL CONFORM TO THE "AMERICAN STANDARD FOR NURSERY STOCK", ANSI-Z60, LATEST EDITION, OF THE AMERICAN ASSOCIATION OF NURSERYMEN, INC.
16. HEEL IN AND WATER ANY PLANT STOCK NOT PLANTED WITHIN 24 HOURS OF DELIVERY UNTIL INSTALLATION. PLANTS NOT MAINTAINED IN THIS MANNER WILL BE REJECTED.
17. REFER TO SPECIFICATIONS FOR WARRANTY REQUIREMENTS AND OTHER PLANTING ACCESSORIES.

MAINTENANCE AND CARE

18. BEGIN PLANT MAINTENANCE IMMEDIATELY AFTER EACH PORTION OF THE WORK IS IN PLACE.
19. MAINTENANCE INCLUDES WATERING, WEEDING, MULCHING, REMOVAL OF DEAD MATERIAL PRIOR TO GROWING SEASON, RE-SETTING PLANTS AND PROPER GRADE, AND KEEPING PLANTS IN A PLUMB POSITION.
20. REFER TO SPECIFICATIONS FOR FULL INSPECTION, MAINTENANCE, AND WARRANTY REQUIREMENTS.

PLOT DATE: 2/2/2026 2:53:54 PM FILE: G:\244Pro\240078\500 Drawings\LA\240078 12.0 Landscape Plans.dwg

I HEREBY CERTIFY that this plan, specification or report was prepared by me or under my direct supervision and that I am a duly Licensed Professional Engineer under the laws of the State of Minnesota.

HEIDI BRINGMAN
PRINTED NAME

Heidi Bringman
SIGNATURE

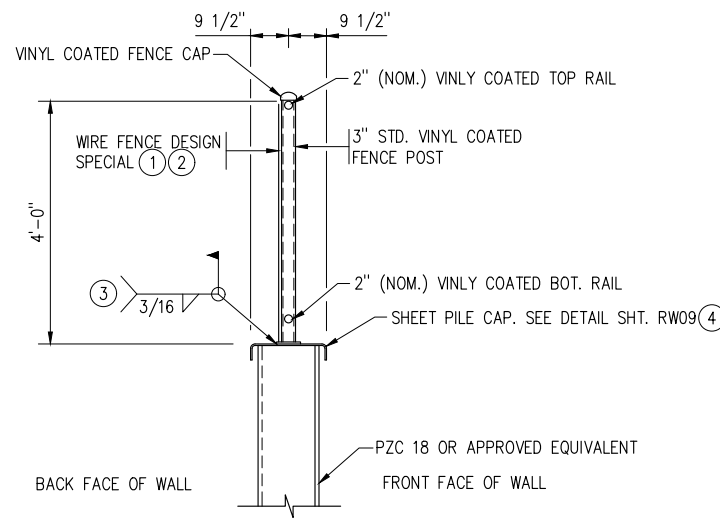
01/12/2026
DATE
46914
LIC. NO.

CITY PROJECT NO. 2208

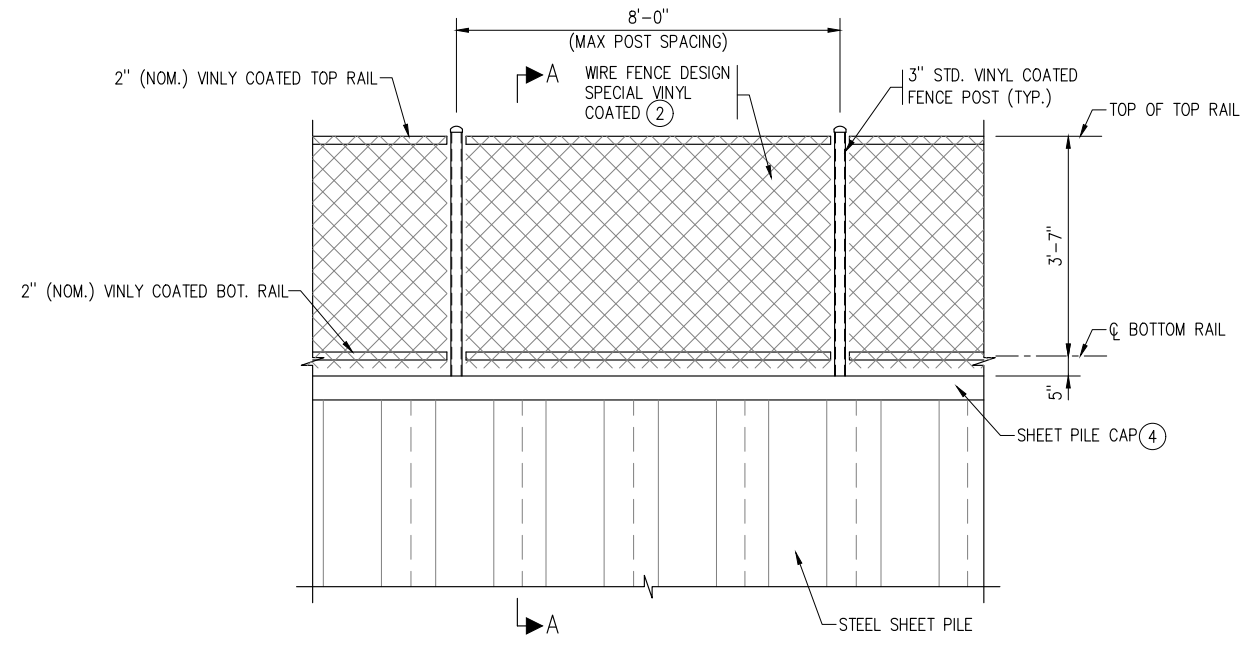
**PALM STREET PERMANENT STORMWATER MANAGEMENT
SYSTEM IMPROVEMENTS**

REVISION
02/03/26

LANDSCAPE PLANS
SHEET NO. LA02 OF LA03 SHEETS

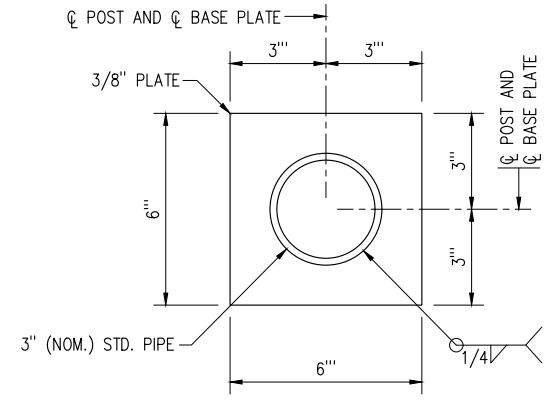


SECTION A-A ①



SHEET PILE ELEVATION ①

ATTACH FENCE RAILS TO FENCE POSTS WITH VINYL COATED RAIL CLAMPS



BASE PLATE DETAIL

CHAIN LINK FENCE NOTES:

- STRUCTURAL PIPE PER MNDOT SPEC. 3362
- GALVANIZE THE FENCE POST AND FENCE POST BASE AFTER FABRICATION PER MNDOT SPEC. 3394.
- ALL HARDWARE TO BE GALVANIZED PER MNDOT SPEC 3392

CHAIN LINK FENCE DETAILS:

- FENCE SHALL BE PROVIDED AND INSTALLED ACCORDING TO DETAILS (THIS SHEET) AND THE FOLLOWING:
1. A TOP AND BOTTOM RAIL SHALL BE PROVIDED THE ENTIRE LENGTH OF EACH FENCE
 2. STRETCHER BARS SHALL BE PROVIDED AT EACH END POST AND ALONG THE TOP AND BOTTOM OF RAILS.
 3. ALL END POSTS AND INTERMEDIATE (LINE) POSTS SHALL BE 3" NOM. DIAMETER AS DETAILED AND NOTED ABOVE.
 4. ALL FENCE COMPONENTS SHALL BE GALVANIZED INCLUDING BASE PLATES.

NOTES:

- ① ALL MATERIAL AND LABOR REQUIRED TO FURNISH AND INSTALL FENCE AS SHOWN, INCLUDING BUT NOT LIMITED TO FENCE POST, TOP AND BOTTOM RAIL, CHAIN LINK FABRIC, POST BASE AND WELDING TO STEEL CAP, SHALL BE INCLUDED IN PRICE BID FOR ITEM "WIRE FENCE DESIGN SPECIAL VINYL COATED"
- ② CHAIN LINK FENCE SHALL BE ATTACHED ON THE BACK SIDE WALL FACE OF THE POSTS.
- ③ REPAIR GALVANIZING ON FENCE POST BASE AFTER FIELD WELD (INCIDENTAL).
- ④ SEE SHT. RW09 FOR ALL PILE CAP DETAILS AND DETAILS NOT SHOWN.

PLOT DATE: 2/3/2026 2:35:41 PM FILE: G:\24Pro\240078\500 Drawings\Structural\240078RW09A.dwg

I HEREBY CERTIFY that this plan, specification or report was prepared by me or under my direct supervision and that I am a duly Licensed Professional Engineer under the laws of the State of Minnesota.

CHRIS MILLER
PRINTED NAME

Christopher J. Miller
SIGNATURE

02/03/2026
DATE
49840
LIC. NO.

CITY PROJECT NO. 2208

PALM STREET PERMANENT STORMWATER
MANAGEMENT SYSTEM IMPROVEMENTS

REVISION
02/03/2026

FENCE DETAILS – ALTERNATIVE DESIGN
SHEET NO. RW09A OF RW09 SHEETS