

**DOCUMENT 00 00 12**

**ADDENDUM NO. 2**

**June 3, 2025**

**Taxiway A Reconstruction – Phase 6 and Midfield Ramp Repair – Phase 3**

**Duluth International Airport  
Duluth Airport Authority  
AIP No. 3-27-0024-080-2024  
SP No. A6901-220, A6901-222  
City of Duluth No. 25-4406  
SEH No. DULAI 179719 & 180793**

From: Short Elliott Hendrickson Inc.  
3535 Vadnais Center Drive  
St. Paul, MN 55110-3507  
651.490.2000

To: Document Holders

DOCUMENT HOLDERS on the above-named project are hereby notified that this document shall be appended to, take precedence over and become part of the original bidding documents dated May 13, 2025 and Addendum No. 1 dated June 2, 2025 for this work. Bids submitted for the construction of this work shall conform to this document.

This addendum consists of revisions to drawings.

**Changes to Bidding Requirements:**

1. None

**Changes to Specifications:**

2. None

**Changes to Drawings:**

3. Plan Set A – Drawing E-104 Electrical New Work Plan – Area 4: Updated detail callout for a taxiway edge light. DELETE in its entirety and REPLACE with the attached revised drawing.
4. Plan Set A – Drawing E-105 Electrical New Work Plan – Area 5: Updated panel designations and orientations for three airfield electrical signs (sign S13, S14, S15). DELETE in its entirety and REPLACE with the attached revised drawing.
5. Plan Set A – Drawing E-111 Electrical Signage Legend: Updated table to reflect panel designation changes for three airfield electrical signs (sign S13, S14, S15). DELETE in its entirety and REPLACE with the attached revised drawing.
6. Plan Set A – Drawing E-503 Electrical Details 3: Remove Detail 5. DELETE in its entirety and REPLACE with the attached revised drawing.
7. Plan Set A – Drawing E-505 Electrical Details 5: Additional Sheet added to Plan Set A. INSERT in its entirety.

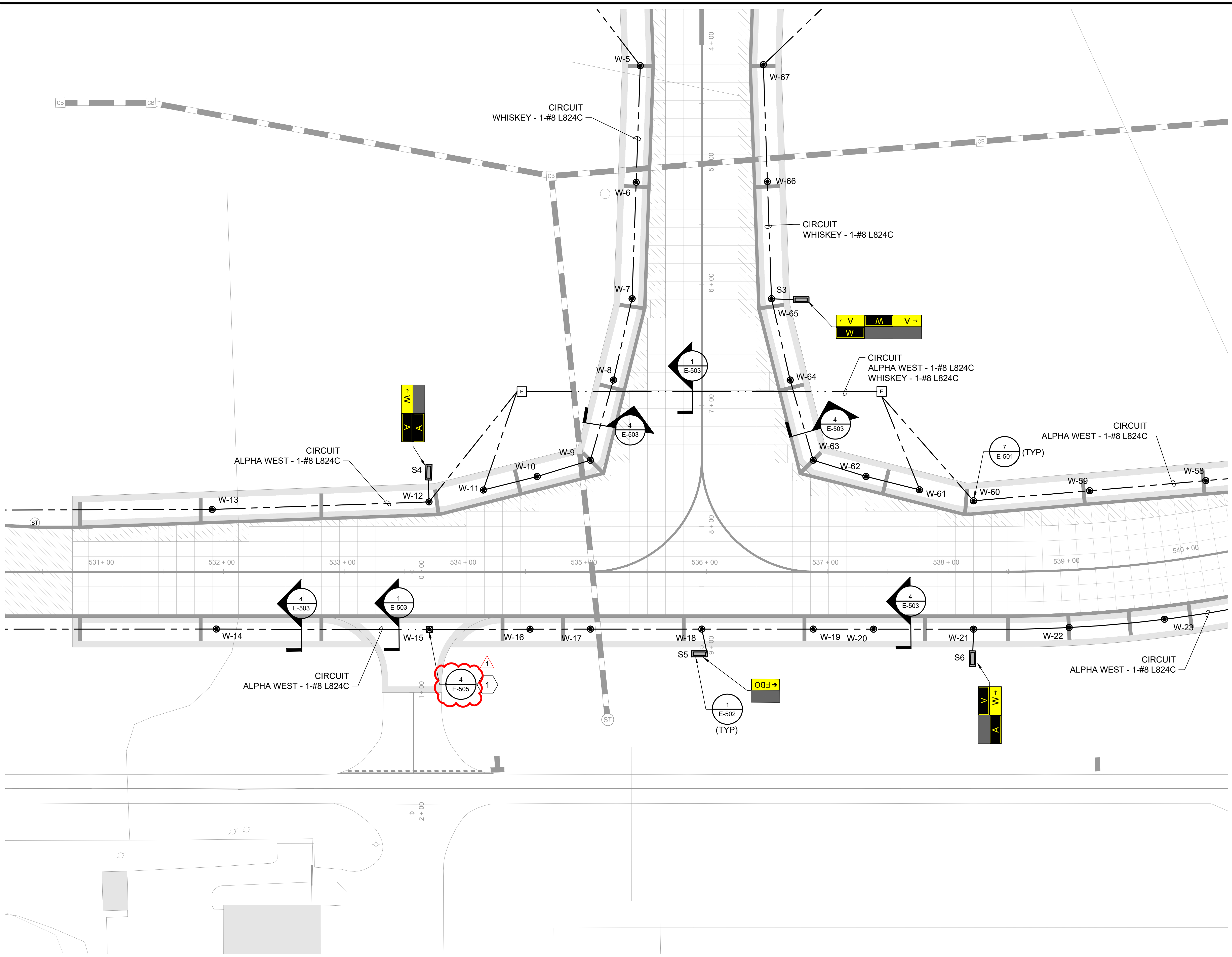
**Attachments:**

Updated Drawings

Note: Receipt of this Addendum No.2, dated June 3, 2025 shall be acknowledged on [BidExpress](#). Failure to do so will not allow Bidder to submit Bid.

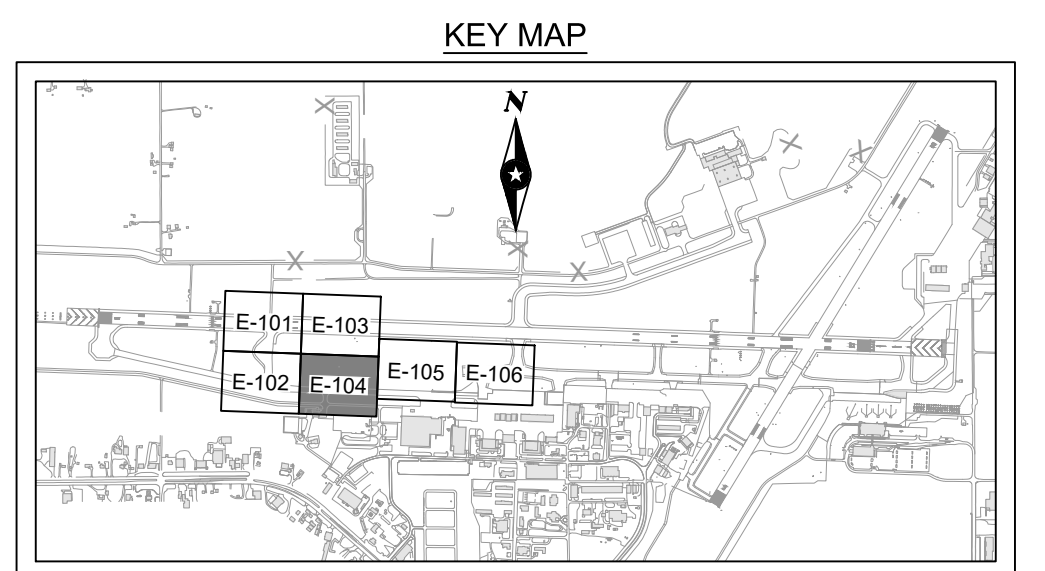
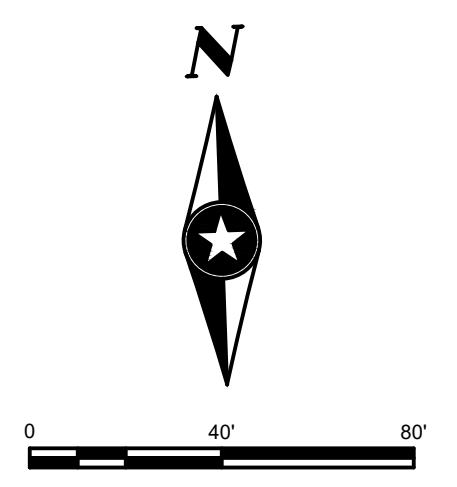
**END OF ADDENDUM**

Save: 5/29/2025 1:24 PM atungseth Plot: 5/30/2025 11:19 AM Z:\Clients\ANF\OuluthMNDL\176387\_TWA-Phase6\Design\Elect\Sheets\176387E-101.dwg



- NOTES:**
- SEE SHEETS E-001 AND E-002 FOR LEGEND, ABBREVIATIONS, INFORMATION ON CIRCUITS, AND GENERAL NOTES.
  - SEE SIGN SCHEDULE ON SHEET E-111 FOR SIGN CONFIGURATION.
  - ALL EXISTING UTILITIES ARE NOT SHOWN ON THE PLANS. CONTRACTOR SHALL VERIFY LOCATIONS AND DEPTH OF ALL UTILITIES PRIOR TO CONSTRUCTION.
  - COVER OR DISCONNECT ALL TAXIWAY LIGHTS AND GUIDANCE SIGNS WITHIN THE CLOSURE AREA.
  - NEW BASE CAN AND SIGN LOCATIONS SHALL BE STAKED OUT BY A REGISTERED SURVEYOR.
  - CONTRACTOR SHALL REPLACE, AT NO ADDITIONAL COST, ANY LIGHT FIXTURE, BASE CAN, ISOLATION TRANSFORMER, OR CABLE DAMAGED BY THE CONTRACTOR.
  - ALL CONDUITS SHALL BE INSTALLED TO ENSURE THAT WATER MAY DRAIN FROM ANY GIVEN BASE CAN. CONTRACTOR SHALL COORDINATE IN THE FIELD AND DOCUMENT ON AS-BUILT REDLINE DRAWINGS WHICH WAY CONDUITS DRAIN.
  - ALL NEW LIGHTING FIXTURE DRAIN CONDUITS SHALL BE INCIDENTAL TO FIXTURE INSTALLATION. STRUCTURE DRAINS INDICATED SHALL BE COORDINATED WITH CIVIL DRAWINGS. WHERE SHOULDERS ARE NOT BEING REPAIRED, CONTRACTOR SHALL SAW CUT EXISTING PAVEMENT AND PATCH, WHICH SHALL BE INCIDENTAL TO DRAIN INSTALLATION.
  - CONTRACTOR MUST COORDINATE PHASING OF ALL WORK WITH PHASING PLANS (G2.00 THROUGH G2.01). COORDINATION MUST INCLUDE DAA, ATCT AND FAA REPRESENTATIVES AND MUST TAKE INTO ACCOUNT SYSTEM OUTAGES. ALL CUT-OVERS MUST BE COMPLETED WITHIN A WORK DAY AND LIGHTING CIRCUITS OPERATIONAL PRIOR TO DUSK AS COORDINATED WITH DAA. DUCTBANK CONSTRUCTION MUST BE PERFORMED EARLY IN A GIVEN PHASE WORK AREA SO THAT LIGHTING CIRCUITS CAN BE CUT-OVER PRIOR TO DEMOLITION OF EXISTING DUCTBANKS AND STRUCTURES. PROVIDE TEMPORARY JUMPERING BETWEEN STRUCTURES AS REQUIRED DURING DIFFERENT PROJECT PHASING STAGES.

- KEYED NOTES:**
- 1 PROVIDE NEW L-852T(L) SEMIFLUSH TAXIWAY EDGLIGHT ON L868B BASECAN.



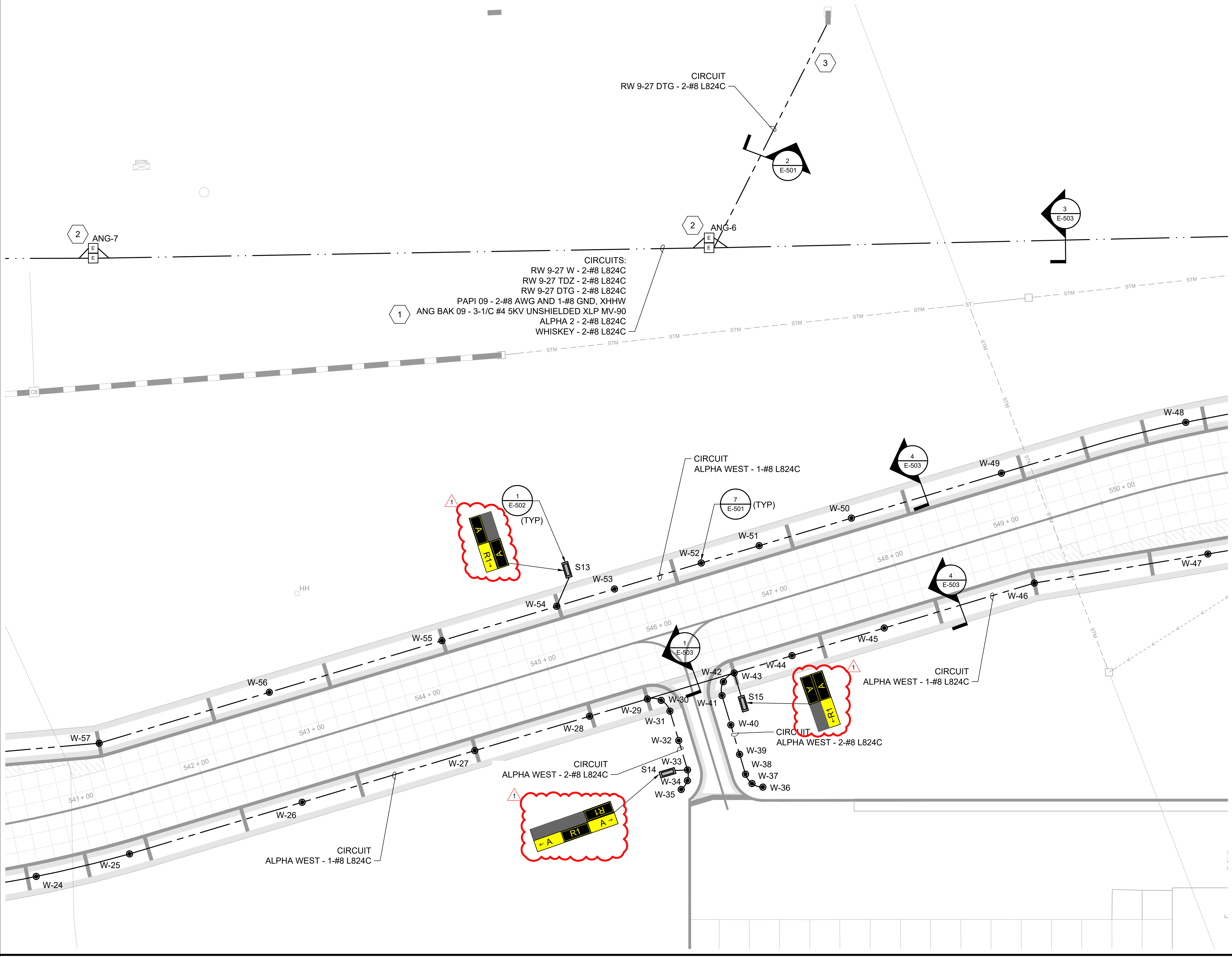
SEH Project	DLH 179719	Rev.#	Plan Revision Issue Description	Date	Rev.#	Plan Revision Issue Description	Date
Drawn By	APT	0	ISSUED FOR BID	05/13/2025			
Designed By	SAY	1	ADDENDUM NO. 2	06/03/2025			
Checked By	SMW						

I HEREBY CERTIFY THAT THIS PLAN WAS PREPARED BY ME OR UNDER MY DIRECT SUPERVISION AND THAT I AM A DULY LICENSED PROFESSIONAL ENGINEER UNDER THE LAWS OF THE STATE OF MN.

SHAWN M. WHALEN, PE  
DATE: 06-03-25 LICENSE NO. 23994

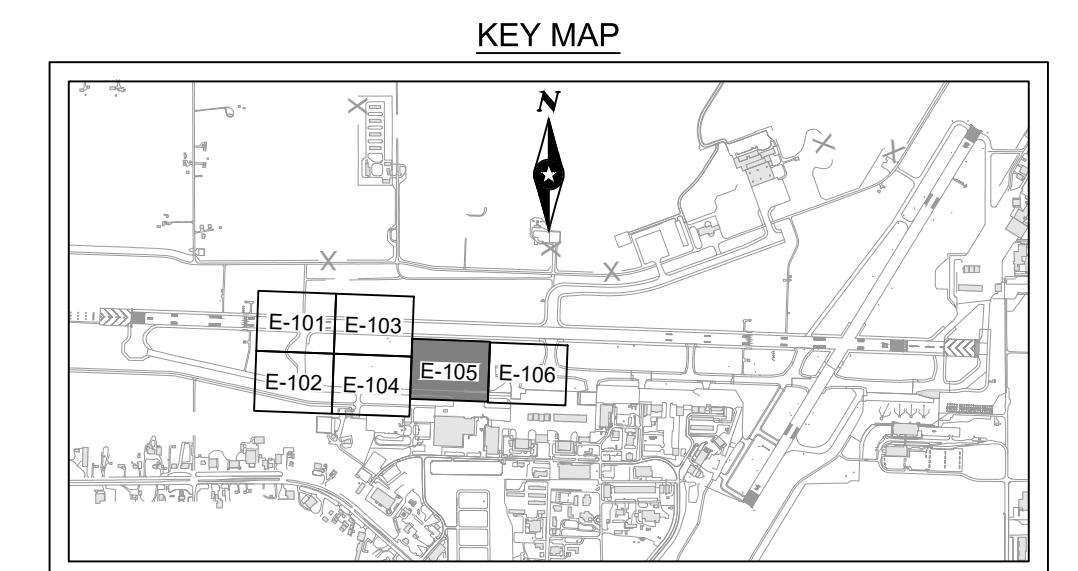
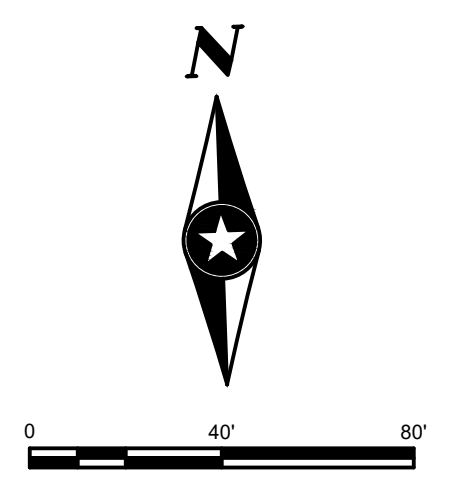
**TAXIWAY A RECONSTRUCTION - PHASE 6**  
DULUTH, MINNESOTA

Save: 5/29/2025 1:24 PM atungseth Plot: 5/30/2025 11:19 AM Z:\Clients\ANF\Ouluth\MNDLH176387\_TWA-Phase6\Design\Sheets\176387E-101.dwg



- NOTES:**
- SEE SHEETS E-001 AND E-002 FOR LEGEND, ABBREVIATIONS, INFORMATION ON CIRCUITS, AND GENERAL NOTES.
  - SEE SIGN SCHEDULE ON SHEET E-111 FOR SIGN CONFIGURATION.
  - ALL EXISTING UTILITIES ARE NOT SHOWN ON THE PLANS. CONTRACTOR SHALL VERIFY LOCATIONS AND DEPTH OF ALL UTILITIES PRIOR TO CONSTRUCTION.
  - COVER OR DISCONNECT ALL TAXIWAY LIGHTS AND GUIDANCE SIGNS WITHIN THE CLOSURE AREA.
  - NEW BASE CAN AND SIGN LOCATIONS SHALL BE STAKED OUT BY A REGISTERED SURVEYOR.
  - CONTRACTOR SHALL REPLACE, AT NO ADDITIONAL COST, ANY LIGHT FIXTURE, BASE CAN, ISOLATION TRANSFORMER, OR CABLE DAMAGED BY THE CONTRACTOR.
  - ALL CONDUITS SHALL BE INSTALLED TO ENSURE THAT WATER MAY DRAIN FROM ANY GIVEN BASE CAN. CONTRACTOR SHALL COORDINATE IN THE FIELD AND DOCUMENT ON AS-BUILT REDLINE DRAWINGS WHICH WAY CONDUITS DRAIN.
  - ALL NEW LIGHTING FIXTURE DRAIN CONDUITS SHALL BE INCIDENTAL TO FIXTURE INSTALLATION. STRUCTURE DRAINS INDICATED SHALL BE COORDINATED WITH CIVIL DRAWINGS. WHERE SHOULDERS ARE NOT BEING REPAIRED, CONTRACTOR SHALL SAW CUT EXISTING PAVEMENT AND PATCH, WHICH SHALL BE INCIDENTAL TO DRAIN INSTALLATION.
  - CONTRACTOR MUST COORDINATE PHASING OF ALL WORK WITH PHASING PLANS (G2.00 THROUGH G2.01). COORDINATION MUST INCLUDE DAA, ATCT AND FAA REPRESENTATIVES AND MUST TAKE INTO ACCOUNT SYSTEM OUTAGES. ALL CUT-OVERS MUST BE COMPLETED WITHIN A WORK DAY AND LIGHTING CIRCUITS OPERATIONAL PRIOR TO DUSK AS COORDINATED WITH DAA. DUCTBANK CONSTRUCTION MUST BE PERFORMED EARLY IN A GIVEN PHASE WORK AREA SO THAT LIGHTING CIRCUITS CAN BE CUT-OVER PRIOR TO DEMOLITION OF EXISTING DUCTBANKS AND STRUCTURES. PROVIDE TEMPORARY JUMPERING BETWEEN STRUCTURES AS REQUIRED DURING DIFFERENT PROJECT PHASING STAGES.

- KEYED NOTES:**
- 600V-RATED LOW-VOLTAGE CIRCUITRY MUST BE ROUTED IN SEPARATE CONDUIT AS 5KV CABLING AND ROUTED ALONG SEPARATE RACKS WITHIN ELECTRICAL STRUCTURES.
  - ROUTE ANG CIRCUITRY THROUGH ANG HANDHOLES "ANG-6" AND "ANG-7", SEPARATE FROM THE DAA HANDHOLES.
  - PROVIDE NEW CONDUIT AND CIRCUIT TO EXISTING RDR SIGN.

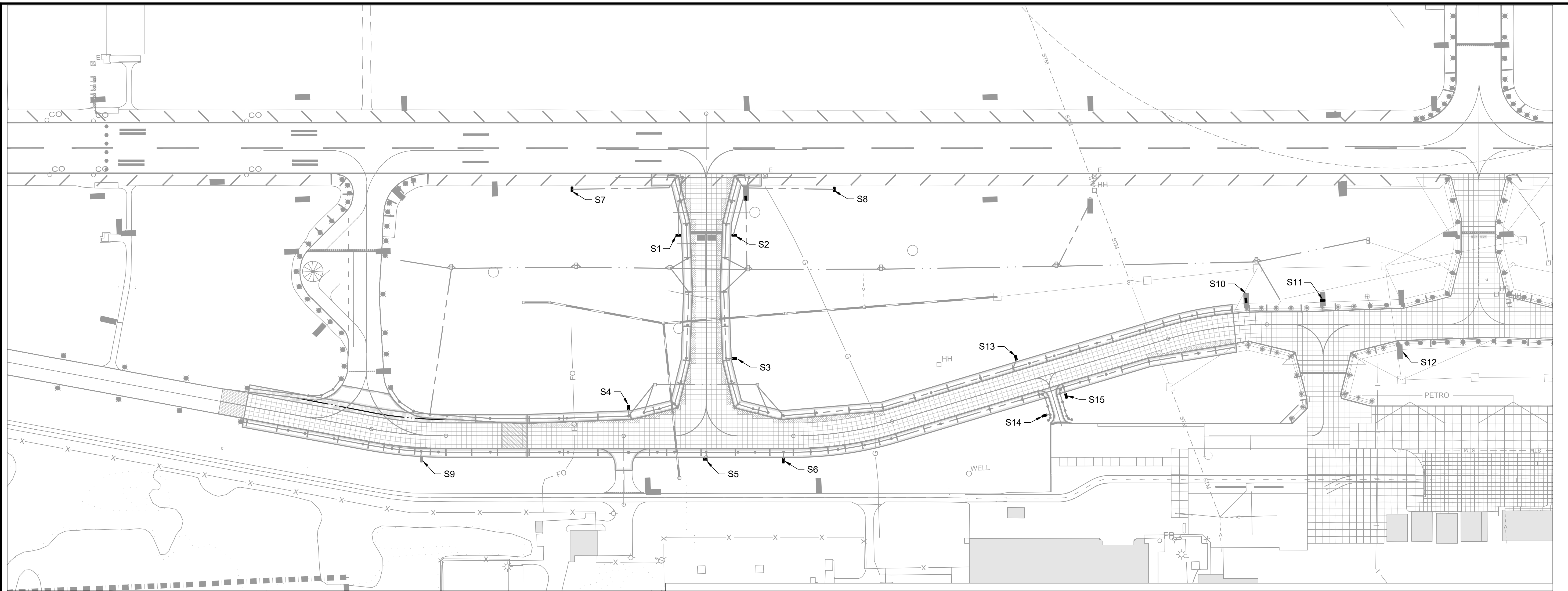


SEH Project	DLH 179719	Rev.#	0	Plan Revision Issue Description	ISSUED FOR BID	Date	05/13/2025
Drawn By	APT	Rev.#	1	Plan Revision Issue Description	ADDENDUM NO. 2	Date	06/03/2025
Designed By	SAY						
Checked By	SMW						

I HEREBY CERTIFY THAT THIS PLAN WAS PREPARED BY ME OR UNDER MY DIRECT SUPERVISION AND THAT I AM A DULY LICENSED PROFESSIONAL ENGINEER UNDER THE LAWS OF THE STATE OF MN.

SHAWN M. WHALEN, PE  
DATE: 06-03-25 LICENSE NO. 23994

**TAXIWAY A RECONSTRUCTION - PHASE 6**  
DULUTH, MINNESOTA

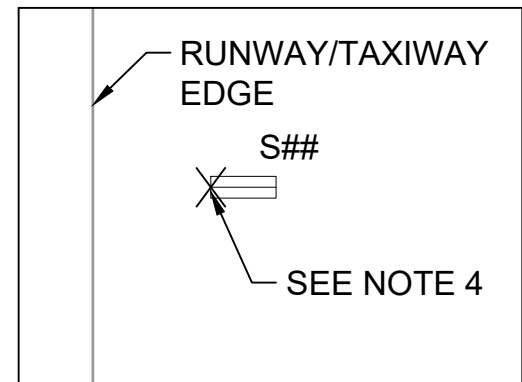


**NOTES:**  
**1. SIGN PANEL TYPES:**

TYPE	ABBRV.	PURPOSE	LEGEND COLOR	BACKGROUND COLOR	i.e.
L-858Y	Y	DIRECTION, DESTINATION & BOUNDARY	BLACK	YELLOW	A
L-858R	R	MANDATORY	WHITE w/ BLACK OUTLINE	RED	9 - 27
L-858L	L	RUNWAY / TAXIWAY LOCATION	YELLOW	BLACK w/ YELLOW BORDER	Y

1. THE NUMBER OF MODULES INDICATED IS AN ESTIMATE ONLY FOR BID PURPOSES. ACTUAL NUMBER OF MODULES/WIDTH TO BE USED FOR EACH SIGN MUST BE DETERMINED BY THE SIGN MANUFACTURER.

SIGN LENGTHS	
NUMBER OF MODULES	APPROXIMATE LENGTH (FEET)
1	8'
2	12'
3	15'
4	18'



**SIGN LENGTH NOTES:**

- SIGN LENGTHS MAY VARY BASED ON MANUFACTURER.
- CONFIRM LENGTH WITH MANUFACTURER PRIOR TO BID AND ADJUST FOUNDATION ACCORDINGLY.
- SIGNAGE CONCRETE BASE TO BE APPROPRIATELY SIZED. SEE DETAIL 1 ON DRAWING EA502.

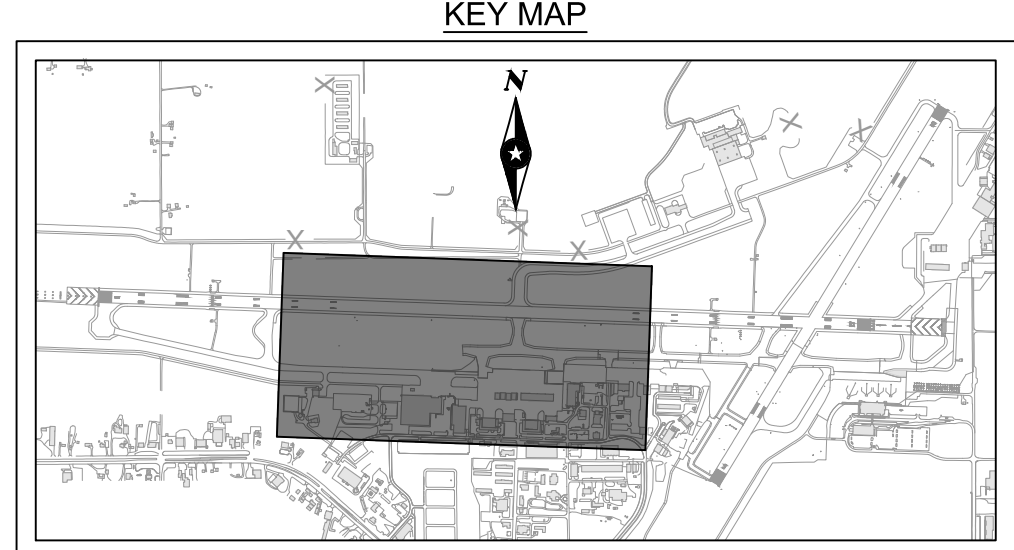
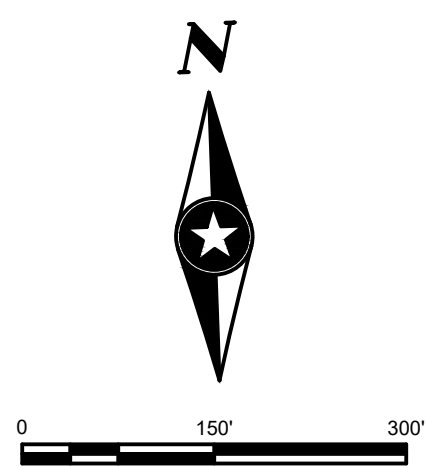
- PROVIDE APPROPRIATELY SIZED ISOLATION TRANSFORMER AS RECOMMENDED BY SIGN MANUFACTURER.
- RSA/OFZ BOUNDARY PER FIGURE 9(a) OF AC 150/53040-18.
- SIGN COORDINATES ARE FROM MIDPOINT OF EDGE OF SIGN WHICH IS CLOSEST TO THE ADJACENT PAVEMENT EDGE. SEE NEW WORK SHEETS FOR SIGN LOCATION COORDINATES. NEW BASE CAN AND SIGN LOCATIONS MUST BE STAKED OUT BY A REGISTERED SURVEYOR.
- THE SIGN LEGEND TABLE ON THIS DRAWING IS FOR NEW SIGNS OR REVISIONS TO EXISTING SIGNS ONLY.
- COVER OR DISCONNECT ALL TAXIWAY LIGHTS AND GUIDANCE SIGNS WITHIN THE CLOSURE AREA.
- SEE SHEET E-001 FOR LEGEND, ABBREVIATIONS, INFORMATION ON CIRCUITS, AND NOTES.
- THIS SIGN LEGEND IS INTENDED TO BE PRINTED IN COLOR.
- SEE PLAN SHEETS FOR ORIENTATION OF SIGNS. "FRONT" OF A SIGN FIXTURE REFERS TO THE SIGN FACE AS PILOT APPROACHES SIGN AND FACE IS ON PILOT'S LEFT-HAND SIDE. "BACK" OF SIGN REFERS TO THE OPPOSITE SIDE.

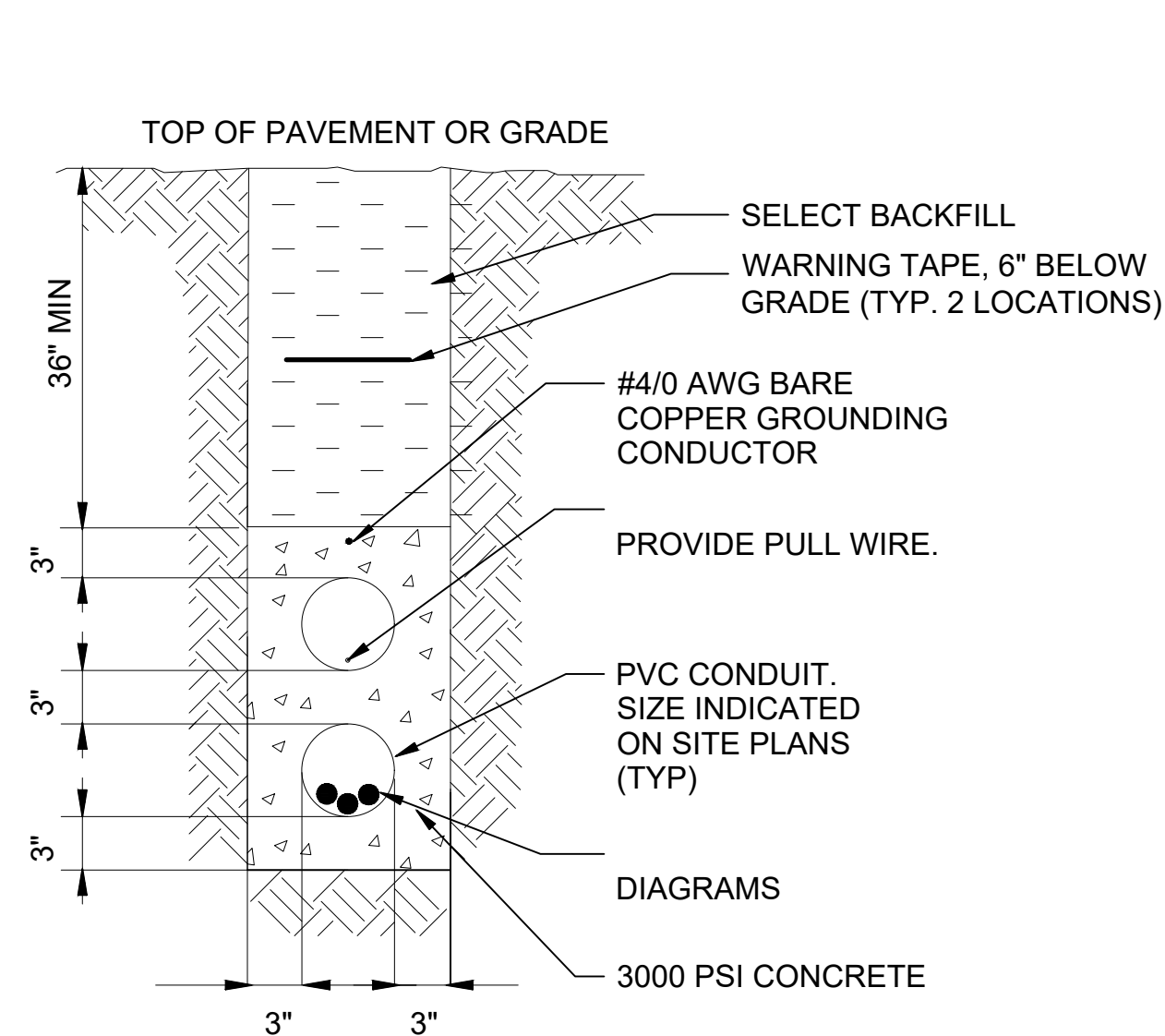
**AIRFIELD SIGN SCHEDULE**

SIGN ID	SIGN LEGEND (NOTE 15)								TYPE (NOTE 1)		SIZE	STYLE	MODULES SEE (NOTE 2)	ISOLATION TRANSFORMER SIZE (NOTE 3)	WORK DESCRIPTION	CIRCUIT INFORMATION	
	FRONT (LEFT TO RIGHT)				BACK (LEFT TO RIGHT)				FRONT	BACK						STEPS	DESCRIPTION
	1	2	3	4	1	2	3	4									
S1	W	9-27			W				L/R	Y/L	2	2	2	100W	NEW SIGN ON NEW FOUNDATION	3	RW 9-27 C
S2	W				9-27	W			L/Y	R/L	2	2	2	100W	NEW SIGN ON NEW FOUNDATION	3	RW 9-27 C
S3	← A	W	A →		W				L/R	L	2	2	3	100W	NEW SIGN ON NEW FOUNDATION	3	WHISKEY
S4	← W	A			A				Y/L	L	2	2	2	100W	NEW SIGN ON NEW FOUNDATION	3	ALPHA WEST
S5	← F	BO							Y	BLANK	2	2	2	100W	NEW SIGN ON NEW FOUNDATION	3	ALPHA WEST
S6	A	W →			A				L/Y	L	2	2	2	100W	NEW SIGN ON NEW FOUNDATION	3	ALPHA WEST
S7					W →				BLANK	Y	2	2	1	100W	NEW SIGN ON NEW FOUNDATION	3	WHISKEY
S8	← W								Y	BLANK	2	2	1	100W	NEW SIGN ON NEW FOUNDATION	3	WHISKEY
S9	A	A2 →			A				L/Y	L	2	2	2	100W	NEW SIGN ON NEW FOUNDATION (ALT-BID ONLY)	3	ALPHA WEST
S10	A	R2 →			A				L/Y	BLANK	2	2	2	100W	NEW SIGN ON EXISTING FOUNDATION	3	ALPHA WEST
S11	← 9	27 →							L/Y	BLANK	2	2	2	100W	NEW SIGN ON EXISTING FOUNDATION	3	ALPHA WEST
S12	← R2	A			← A3	A			L/Y	BLANK	2	2	2	100W	NEW MESSAGE PANEL ON EXISTING SIGN/FOUNDATION	3	ALPHA WEST
S13	A	R1 →			A				L/Y	L	2	2	2	100W	NEW SIGN ON NEW FOUNDATION	3	ALPHA WEST
S14	← A	R1	A →		R1				Y/L/Y	L	2	2	3	100W	NEW SIGN ON NEW FOUNDATION	3	ALPHA WEST
S15	← R1	A			A				L/Y	L	2	2	2	100W	NEW SIGN ON NEW FOUNDATION	3	ALPHA WEST

**KEYED NOTES:**

- FOR EXISTING SIGN S12, REPLACE ONLY MODULE 1 ON THE FRONT AND MODULE 1 AND 2 ON THE BACK OF SIGN.



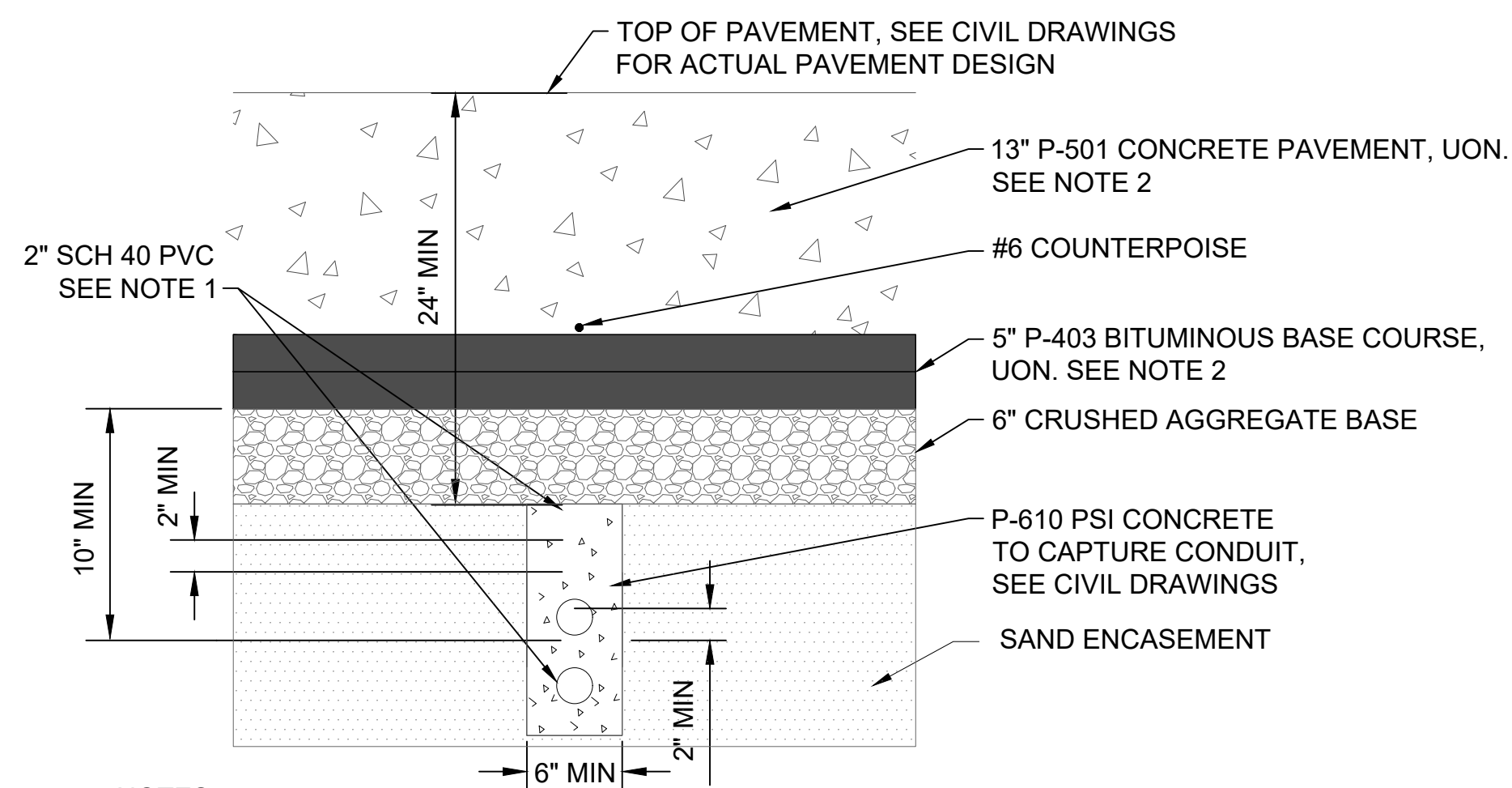


**NOTES:**

1. USE PLASTIC CONDUIT SPACERS AT 5'-0" OC.

TYPICAL 2-WAY CONCRETE ENCASED DUCTBANK

DETAIL NOT TO SCALE 1

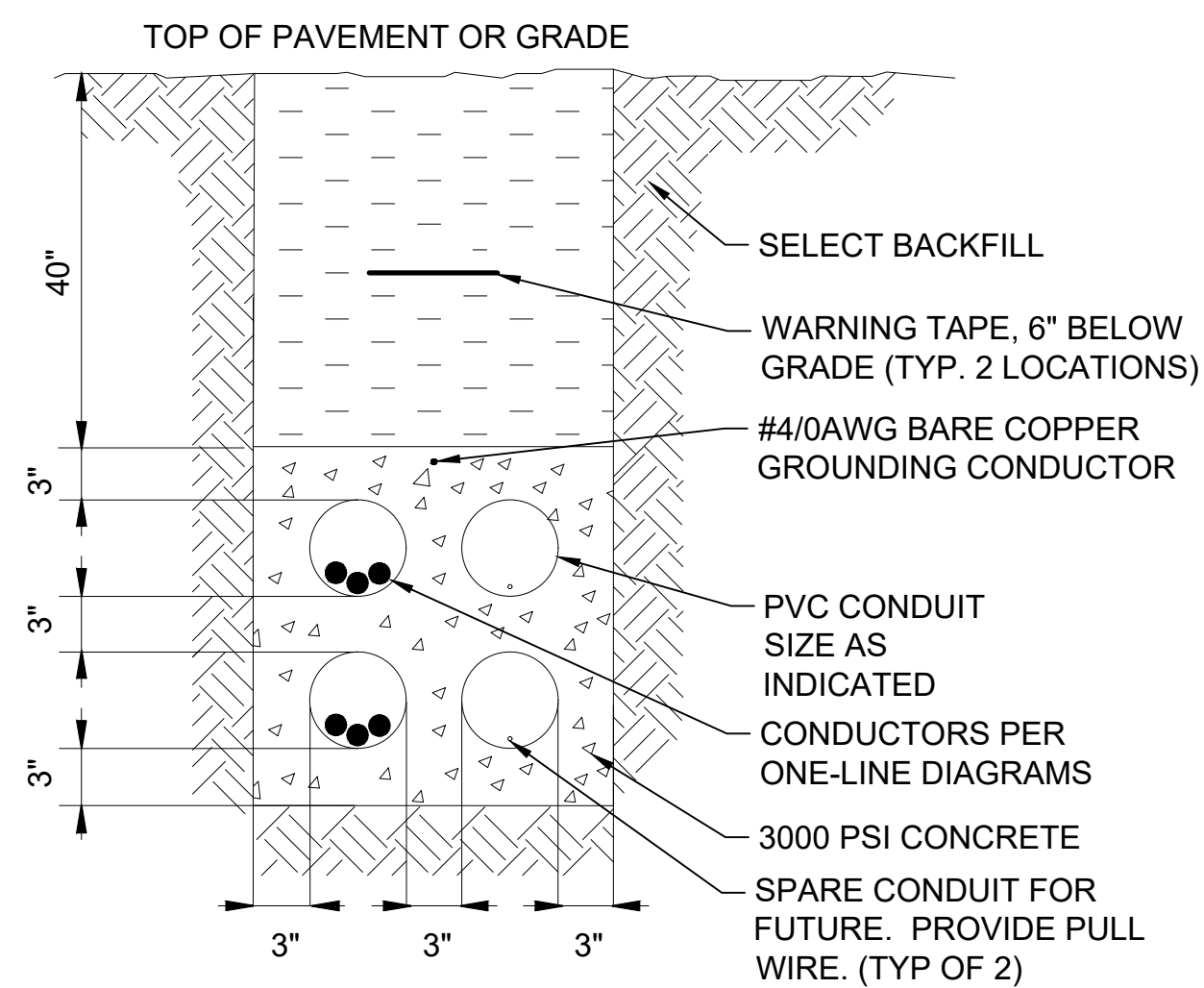


**NOTES:**

1. PROVIDE CONDUIT CHAIRS TO PROPERLY SUPPORT CONDUITS.
2. SEE TYPICAL SECTIONS ON CIVIL PLANS FOR ACTUAL PAVEMENT DESIGN.

CONDUIT SECTION, 2-WAY, UNDER TAXIWAY PAVEMENT

DETAIL NOT TO SCALE 2

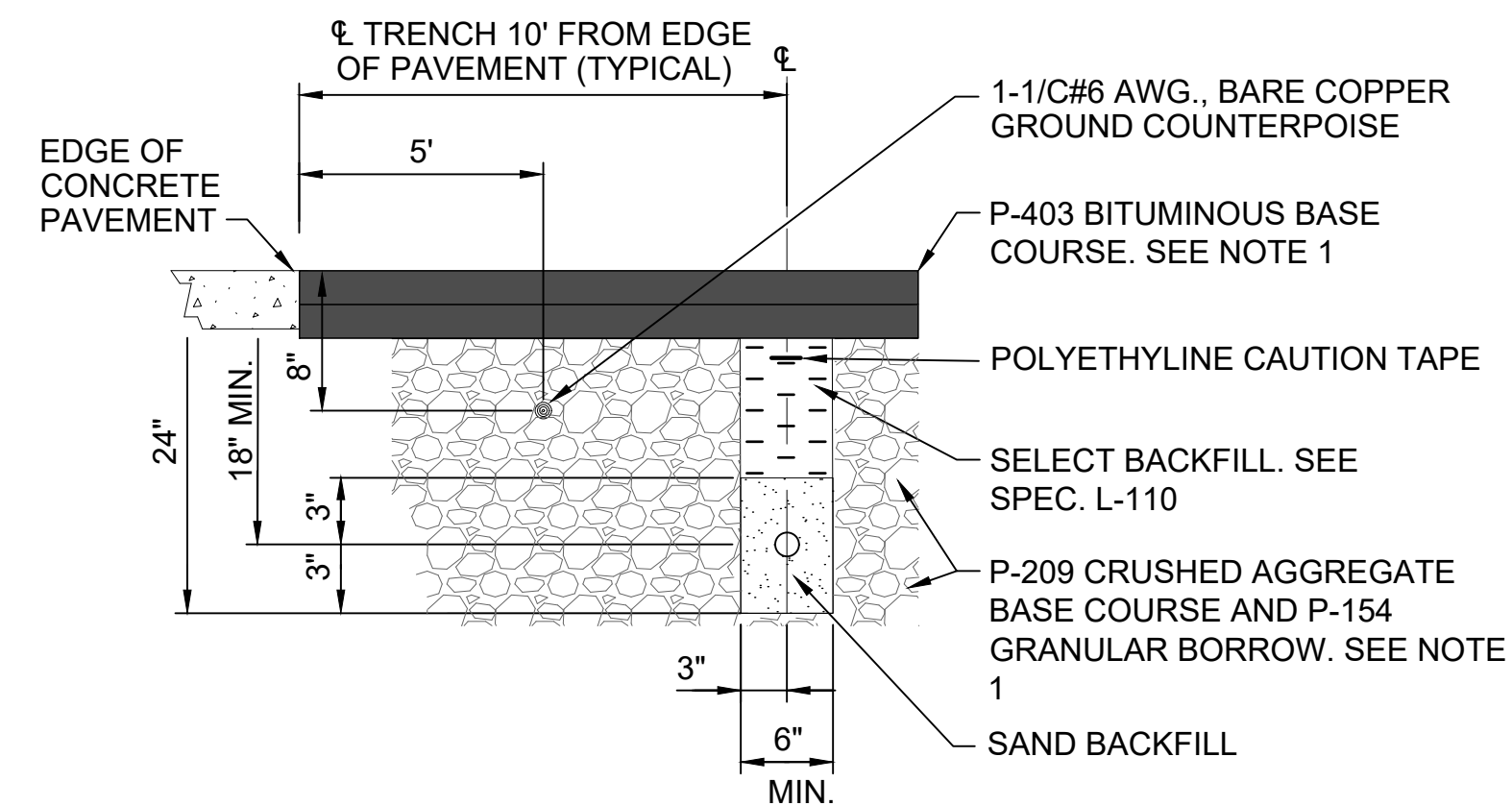


**NOTES:**

1. USE PLASTIC CONDUIT SPACERS AT 5'-0" OC.

TYPICAL 4-WAY CONCRETE ENCASED DUCTBANK

DETAIL NOT TO SCALE 3



**NOTES:**

1. SEE TYPICAL SECTIONS ON CIVIL PLANS FOR ACTUAL PAVEMENT DESIGN.

DIRECT-BURIED ONE-WAY 2" CONDUIT BELOW ASPHALT SHOULDER

DETAIL NOT TO SCALE 4



SEH Project	DLH 179719	Rev.#	0	Plan Revision Issue Description	Date	05/13/2025
Drawn By	APT	Rev.#	1	ISSUED FOR BID ADDENDUM NO. 2	Date	06/03/2025
Designed By	SAY					
Checked By	SMW					

SEH Project	DLH 179719	Rev.#	0	Plan Revision Issue Description	Date	05/13/2025
Drawn By	APT	Rev.#	1	ISSUED FOR BID ADDENDUM NO. 2	Date	06/03/2025
Designed By	SAY					
Checked By	SMW					

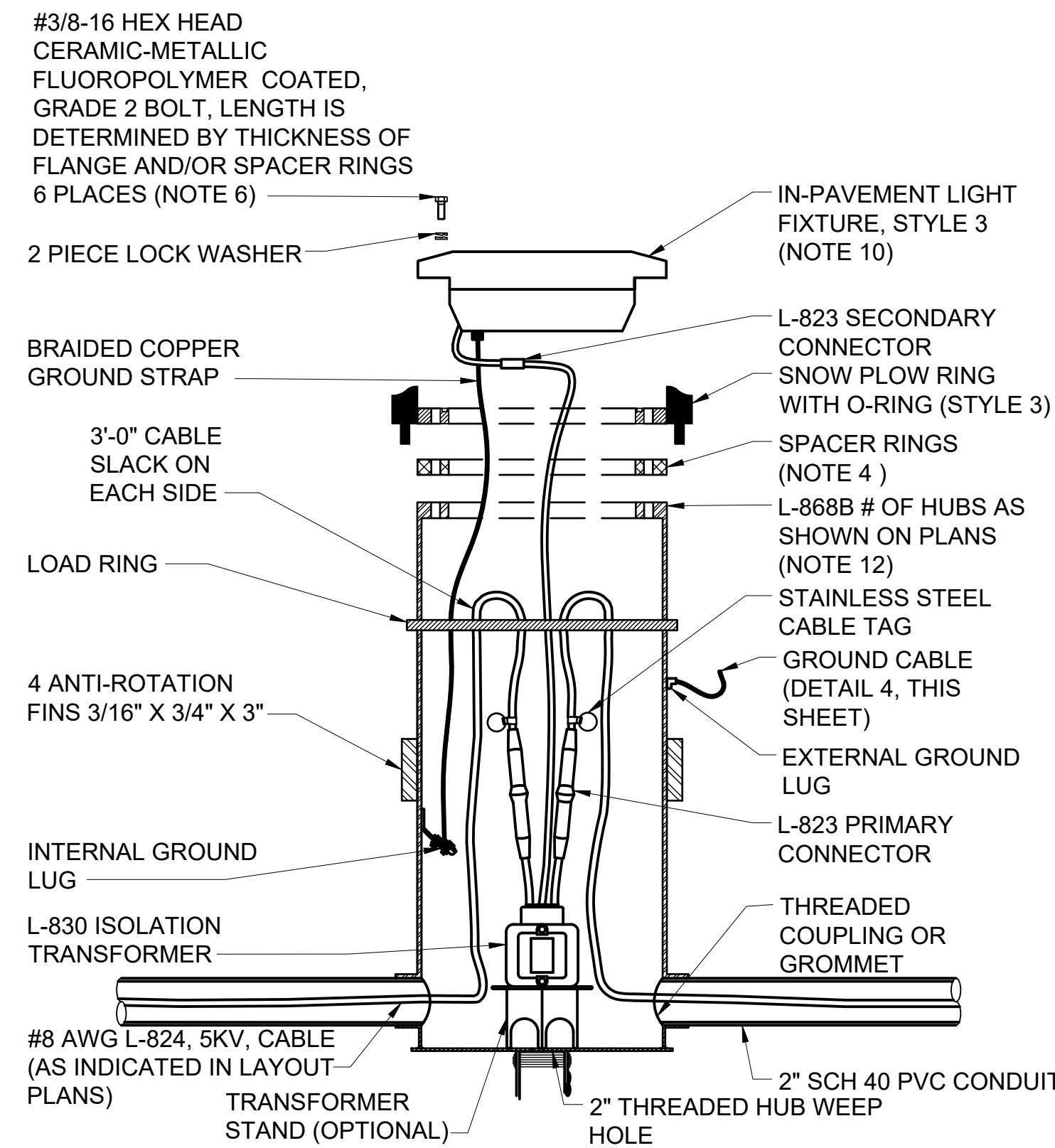
I HEREBY CERTIFY THAT THIS PLAN WAS PREPARED BY ME OR UNDER MY DIRECT SUPERVISION AND THAT I AM A DULY LICENSED PROFESSIONAL ENGINEER UNDER THE LAWS OF THE STATE OF MN.

SHAWN M. WHALEN, PE  
DATE 06-03-25 LICENSE NO. 23994

TAXIWAY A RECONSTRUCTION -  
PHASE 6  
DULUTH, MINNESOTA

ELECTRICAL DETAILS 3

E-503

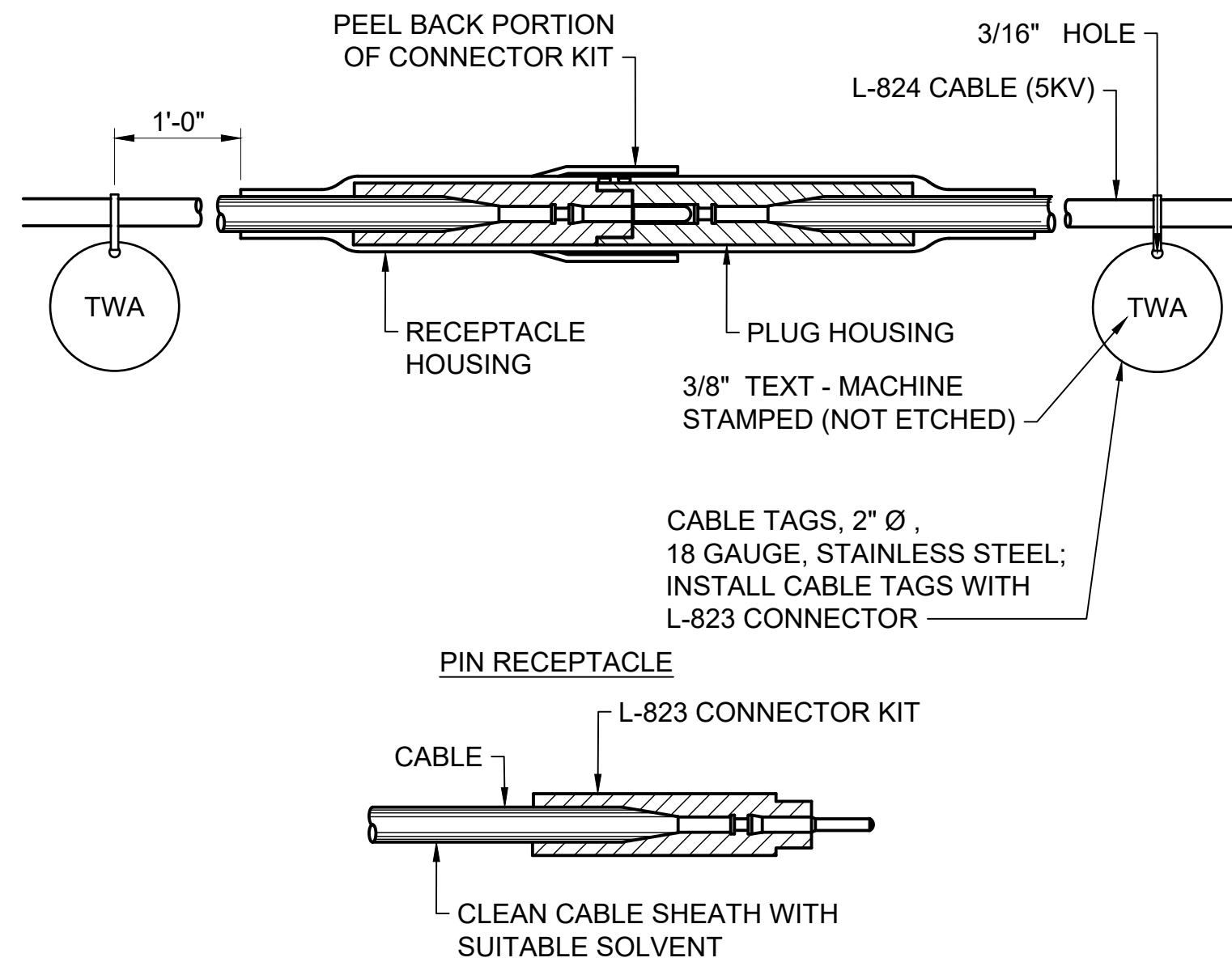


**NOTES:**

- INSTALL CORNER EDGE OF SNOW PLOW RING FLUSH WITH PAVEMENT SURFACE WITH A TOLERANCE OF +0", -1/16".
- SUBMIT ALL BASE CAN INSTALLATION TECHNIQUES, METHODS, MATERIALS, ETC., TO THE GOVERNMENT FOR REVIEW AND APPROVAL PRIOR TO THE START OF WORK.
- BEFORE PAVING MAY PROCEED, THE CONTRACTOR MUST DEMONSTRATE TO THE GOVERNMENT THAT THE BASE CANS ARE AT THE CORRECT LOCATION, ELEVATION, AZIMUTH AND ROTATION AND THAT THE PROPER CLEARANCE EXISTS BETWEEN THE BASE CAN AND THE PAVER.
- THE SPACER RING IS DESIGNED AS A NOMINAL 3/4" THICKNESS. THE SPACER RING MAY BE REQUIRED TO BE THINNER OR THICKER DEPENDING ON BASE CAN INSTALLATION AND PAVING TECHNIQUES / TOLERANCES. THIS CONTRACTOR MUST MEASURE AND DETERMINE THE REQUIRED THICKNESS OF EACH INDIVIDUAL SPACER RING REQUIRED TO PUT THE AIRFIELD LIGHTING FIXTURE AT THE CORRECT ELEVATION, AZIMUTH AND ROTATION. THE CONTRACTOR MAY USE MULTIPLE SPACER RINGS OF VARYING HEIGHTS. IN ADDITION TO THE SNOW PLOW RING, NO MORE THAN 2 SPACER RINGS MAY BE USED ON ANY ONE LIGHT INSTALLATION THE MAXIMUM HEIGHT DISPLACEMENT FOR ONE OR MORE SPACER RINGS WILL BE 2" OR LESS.
- THE FINISHED PAVEMENT SURFACE MUST BE PROTECTED FROM FOREIGN SUBSTANCES WHICH COULD CAUSE STAINING, I.E. CONCRETE, OIL, ETC. THE CONTRACTOR MUST IMMEDIATELY CLEAN ALL SPILLS AND CORRECT/CLEAN ANY STAINED SURFACES AT THE CONTRACTOR'S EXPENSE.
- THE BASE CAN COVER MOUNTING BOLTS MUST EXTEND THRU THE BASE CAN MOUNTING FLANGE INTO THE BASE CAN A MINIMUM OF 1/2". THE BOLTS MUST BE THREADED THE FULL LENGTH OF THE BOLT.
- CONNECT GROUND ROD TO BASE CANS.
- INSTALL TOP OF EDGE OF SNOW PLOW RING FLUSH WITH PAVEMENT SURFACE WITH A TOLERANCE OF +0", -1/16".
- IF THE DISTANCE BETWEEN THE EDGE OF THE SNOW RING AND CONCRETE IS 1/8" OR LESS, SEAL TOP OF OPENING WITH P-605 SILICONE SEALANT AND DELETE THE P-606 COMPOUND.
- THE TOP OF FIXTURE MUST NOT EXCEED THE TOP OF THE SNOW PLOW RING (+0", -1/8").
- THE CONTRACTOR MUST PRE-ASSEMBLE IN-PAVEMENT LIGHT FIXTURE WITH SNOW PLOW RINGS TO ASSURE EACH INDIVIDUAL UNIT ASSEMBLY IS WITHIN TOLERANCE. USE A STRAIGHT EDGE TO VERIFY THE FIXTURE IS LEVEL (TO 1/8"). ANY UNITS NOT WITHIN THIS TOLERANCE WILL BE REJECTED. ASSURE SNOW PLOW RINGS ARE CONFIGURED WITH CORRECT NUMBER AND WIDTH OF OPENINGS.
- THE CONTRACTOR MUST INSTALL A 25" DEEP BASE CAN WHERE THE PCC PAVEMENT THICKNESS IS 15" AND MUST INSTALL A 30" DEEP BASE CAN WHERE THE PAVEMENT THICKNESS IS 20".
- CONTRACTOR MUST ENSURE SEALANT INSTALLATION IS IN ACCORDANCE WITH ELEVATION TOLERANCES OF LIGHT FIXTURE INSTALLATION.
- CONTRACTOR MUST ENSURE SNOW PLOW RINGS ARE COMPATIBLE AND APPROPRIATE FOR USE WITH BASE CANS AND FIXTURES.

IN-PAVEMENT LIGHT MATERIALS

DETAIL NOT TO SCALE 1

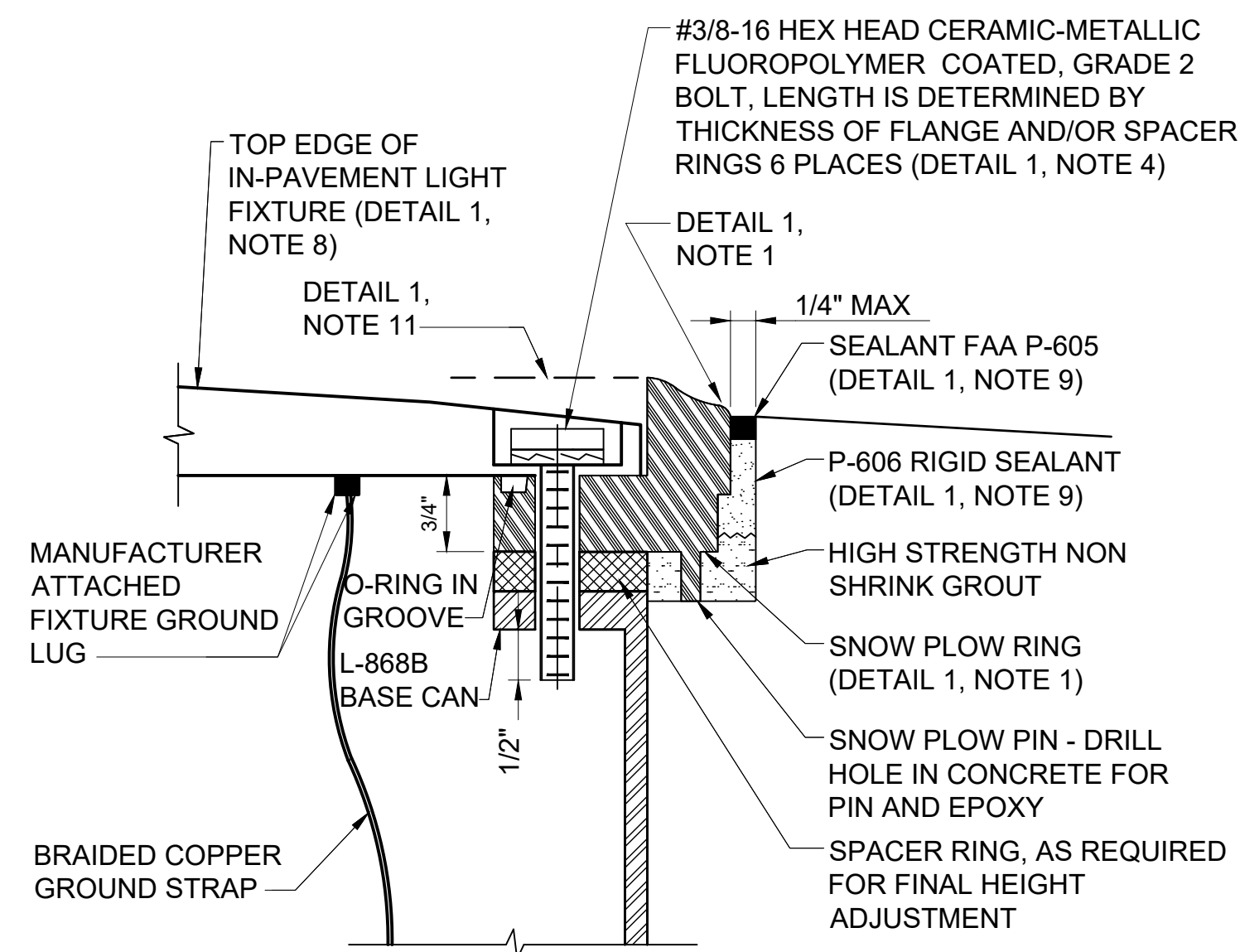


**NOTES:**

- CONTRACTOR MUST PROVIDE CABLE CIRCUIT IDENTIFICATION MARKERS ATTACHED TO BOTH SIDES OF EACH CABLE CONNECTION.
- ATTACH CABLE IDENTIFICATION MARKERS WITH CORROSION RESISTANT MATERIAL.
- THOROUGHLY CLEAN THE CABLE PRIOR TO THE INSTALLATION OF THE L-823 CONNECTOR KIT.
- COMPLETE INSTALLATION OF THE PIN/RECEPTACLE WITH "CRIMPING" TOOL SUPPLIED OR RECOMMENDED BY THE MANUFACTURER AND DESIGNED FOR THIS SPECIFIC PURPOSE. TWO CRIMPING TOOLS MUST BE TURNED OVER TO THE GOVERNMENT UPON COMPLETION OF THE PROJECT.
- ATTACH EACH CABLE TIE ENOUGH TO HOLD IN PLACE WITHOUT COMPRESSING HOUSING. TRIM OFF EXCESS CABLE TIE.
- INSTALLATION OF COMPLETE KIT CONNECTOR MUST BE IN STRICT CONFORMANCE WITH MANUFACTURER'S REQUIREMENTS.

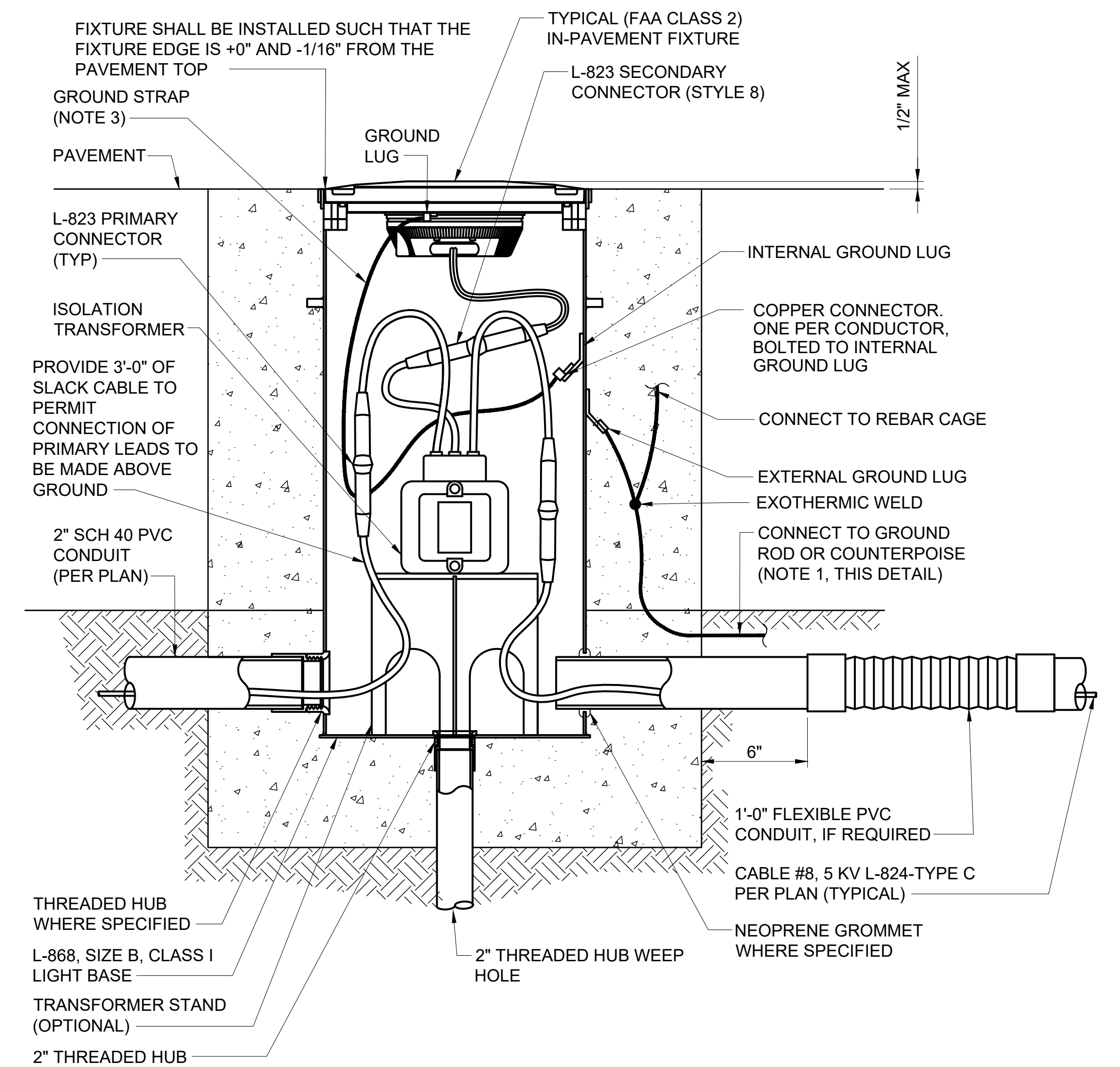
TYPICAL L-823 CONNECTOR DETAIL WITHOUT HEAT SHRINK

DETAIL NOT TO SCALE 2



IN-PAVEMENT LIGHT DETAIL

DETAIL NOT TO SCALE 3

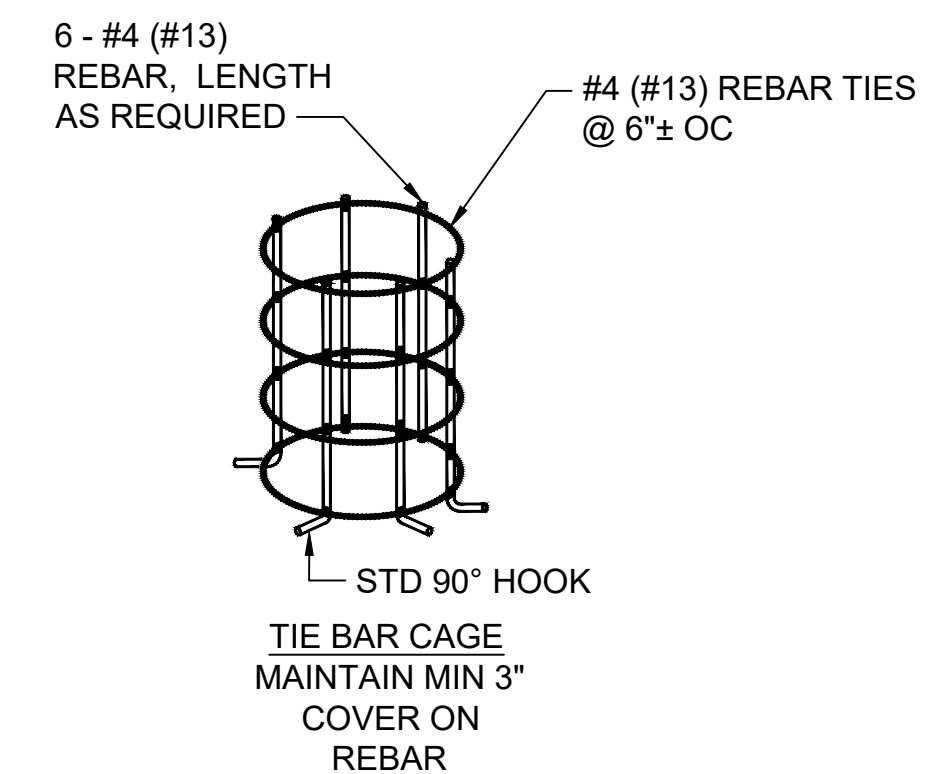


**NOTES:**

- GROUND ROD LOCATION IS OUTSIDE THE BASE CAN ON THE SIDE ADJACENT TO THE COUNTERPOISE AND CONNECTED TO THE EXTERNAL GROUND LUG AND REINFORCEMENT CAGE. PROVIDE 12" SEPARATION FROM COUNTERPOISE.
- PROVIDE 48" BRAIDED COPPER GROUNDING STRAP EQUIVALENT TO #6 WIRE.

IN-PAVEMENT FIXTURE INSTALLATION

DETAIL NOT TO SCALE 4



TYPICAL REBAR TIE BAR CAGE

DETAIL NOT TO SCALE 5

SEH Project	DLH 179719	Rev.#	Plan Revision Issue Description	Date	Rev.#	Plan Revision Issue Description	Date
Drawn By	APT	1	ADDENDUM NO. 2	06/03/2025			
Designed By	SAY						
Checked By	SMW						

I HEREBY CERTIFY THAT THIS PLAN WAS PREPARED BY ME OR UNDER MY DIRECT SUPERVISION AND THAT I AM A DULY LICENSED PROFESSIONAL ENGINEER UNDER THE LAWS OF THE STATE OF MN.

SHAWN M. WHALEN, PE  
DATE: 06-03-25 LICENSE NO. 23994

TAXIWAY A RECONSTRUCTION -  
PHASE 6  
DULUTH, MINNESOTA

ELECTRICAL DETAILS 5

E-505