



Purchasing Division
Finance Department
Room 120
411 West First Street
Duluth, Minnesota 55802

218-730-5340
purchasing@duluthmn.gov

Addendum 1
Solicitation 20-99324
East Superior Street Reconditioning

This addendum serves to notify all bidders of the following changes to the solicitation documents:

1. The quantities in the bid item list have been corrected to include decimal places. A corrected Schedule of Prices is also attached.
2. The DBE goal for this project is 2.8%. The goal was incorrectly identified in the original bid advertisement. A corrected bid advertisement is attached and has replaced the bid advertisement in the BidExpress solicitation.
3. SP-4 Community Benefits Policy is removed from the special provisions.
4. Language in SP-10.1 of the special provisions is revised as follows (language removed is stricken, language underlined is added):
The **third paragraph** shall be deleted and replaced with the following:
~~The Bidder shall submit the Proposal Guaranty electronically or file a hard copy of the Proposal Guaranty with the City Purchasing Division by the bid opening date specified in the Invitation for Bids.~~ Due to the City Hall closure as a result of the COVID-19 pandemic, if Proposal Guaranty is in the form of a bid bond, the bidder must submit it electronically, either through Surety 2000 or SurePath within the BidExpress solicitation, or email it to purchasing@duluthmn.gov. If submitting a certified bank draft or money order, bidder must contact Purchasing seven days prior to bid deadline to make arrangements for delivery. No in-person drop-offs are allowed. Regardless of which method is used, the Proposal Guaranty must be received by the bid opening date and time specified in the Invitation for Bids.
5. SP-57 (2564) Traffic Signs and Devices, attached, is incorporated into the special provisions.
6. Drawing MN2018-1E "90MPH Windspeed – 2" x 12 Ga. Perforated Square Sign Post Systems- MNDOT", attached, is incorporated into the bid documents.

Please acknowledge receipt of this Addendum by checking the acknowledgment box within the www.bidexpress.com solicitation.

Posted: **May 7, 2020**

SCHEDULE OF PRICES**S.P. 118-164-003****MN Project No. STPF 6920(230)****City Job Number 1820****East Superior Street Reconditioning - Lester River Road to TH 61 Expressway****4/24/2020 - Amended 5/6/2020**

LINE NO.	ITEM NO.	DESCRIPTION	UNITS	ESTIMATED QUANTITY	UNIT PRICE	TOTAL PRICE
1	2021.501	MOBILIZATION	LUMP SUM	1	\$	\$
2	2101.501	CLEARING & GRUBBING	LUMP SUM	1	\$	\$
3	2104.502	REMOVE PIPE APRON	EACH	6	\$	\$
4	2104.502	REMOVE MANHOLE OR CATCH BASIN	EACH	10	\$	\$
5	2104.502	REMOVE SIGN TYPE C	EACH	10	\$	\$
6	2104.503	SAWING CONCRETE PAVEMENT (FULL DEPTH)	LIN FT	2,749	\$	\$
7	2104.503	SAWING BITUMINOUS PAVEMENT (FULL DEPTH)	LIN FT	365	\$	\$
8	2104.503	REMOVE SEWER PIPE (STORM) (P)	LIN FT	264	\$	\$
9	2104.504	REMOVE CONCRETE DRIVEWAY PAVEMENT	SQ YD	275	\$	\$
10	2104.504	REMOVE CONCRETE PAVEMENT	SQ YD	2,428	\$	\$
11	2104.504	REMOVE BITUMINOUS DRIVEWAY PAVEMENT	SQ YD	120	\$	\$
12	2104.504	REMOVE BITUMINOUS PAVEMENT	SQ YD	69	\$	\$
13	2104.518	REMOVE CONCRETE WALK	SQ FT	801	\$	\$
14	2105.504	GEOTEXTILE FABRIC TYPE 5	SQ YD	206	\$	\$
15	2105.602	GRAVEL ENTRANCE RESTORATION	EACH	1	\$	\$
16	2106.507	EXCAVATION-COMMON (CV) (P)	CU YD	839	\$	\$
17	2106.507	COMMON EMBANKMENT (CV) (P)	CU YD	172	\$	\$
18	2118.507	AGGREGATE SURFACING (CV) CLASS SPECIAL	CU YD	30	\$	\$
19	2123.510	COMMON LABORERS	hour	20	\$	\$
20	2123.510	10 CU YD TRUCK	hour	10	\$	\$
21	2123.610	TRACTOR MOUNTED BACKHOE-LOADER	hour	10	\$	\$
22	2211.507	AGGREGATE BASE (CV) CLASS 5 (P)	CU YD	53	\$	\$
23	2215.504	FULL DEPTH RECLAMATION (P)	SQ YD	1,984	\$	\$
24	2231.509	BITUMINOUS PATCHING MIXTURE	TON	20	\$	\$
25	2301.502	DOWEL BAR	EACH	764	\$	\$
26	2301.503	INTEGRANT CURB DESIGN B6	LIN FT	305	\$	\$
27	2301.504	CONCRETE PAVEMENT 9.0"	SQ YD	1,813	\$	\$
28	2301.602	DRILL AND GROUT DOWEL BAR (EPOXY COATED)	EACH	790	\$	\$
29	2301.602	DRILL AND GROUT REINFORCEMENT BAR (EPOXY COATED)	EACH	831	\$	\$
30	2302.603	FULL DEPTH REPAIR TYPE (CD-LV)	LIN FT	552	\$	\$
31	2302.618	PARTIAL DEPTH REPAIR (TYPE BA)	SQ FT	221	\$	\$
32	2356.504	BITUMINOUS SEAL COAT	SQ YD	9,716	\$	\$
33	2356.506	BITUMINOUS MATERIAL FOR SEAL COAT	GAL	3,206	\$	\$
34	2360.509	TYPE SP 9.5 WEARING COURSE MIXTURE (3,B)	TON	1,637	\$	\$
35	2360.509	TYPE SP 12.5 NON WEARING COURSE MIXTURE (3,B)	TON	363	\$	\$
36	2501.502	12" RC SAFETY APRON AND GRATE DESIGN 3128	EACH	3	\$	\$
37	2501.502	18" RC SAFETY APRON AND GRATE DESIGN 3128	EACH	2	\$	\$
38	2501.502	21" RC SAFETY APRON AND GRATE DESIGN 3128	EACH	2	\$	\$
39	2502.503	4" PERF PVC PIPE DRAIN	LIN FT	125	\$	\$
40	2503.503	12" RC PIPE SEWER DES 3006 CL III	LIN FT	298	\$	\$
41	2503.503	15" RC PIPE SEWER DES 3006 CL III	LIN FT	8	\$	\$
42	2503.503	18" RC PIPE SEWER DES 3006 CL III	LIN FT	73	\$	\$
43	2503.503	21" RC PIPE SEWER DES 3006 CL III	LIN FT	60	\$	\$
44	2503.602	CONNECT TO EXISTING STORM SEWER	EACH	4	\$	\$

LINE NO.	ITEM NO.	DESCRIPTION	UNITS	ESTIMATED QUANTITY	UNIT PRICE	TOTAL PRICE
45	2504.602	ADJUST VALVE BOX	EACH	9	\$	\$
46	2506.502	CONSTRUCT DRAINAGE STRUCTURE DESIGN G	EACH	6	\$	\$
47	2506.502	CASTING ASSEMBLY	EACH	5	\$	\$
48	2506.502	ADJUST FRAME AND RING CASTING	EACH	9	\$	\$
49	2506.503	CONSTRUCT DRAINAGE STRUCTURE DESIGN F	LIN FT	27	\$	\$
50	2506.602	CONNECT TO EXISTING STRUCTURE	EACH	1	\$	\$
51	2521.518	4" CONCRETE WALK	SQ FT	3,673	\$	\$
52	2521.618	CONCRETE WALK	SQ FT	360	\$	\$
53	2531.503	CONCRETE CURB AND GUTTER B624	LIN FT	580	\$	\$
54	2531.503	CONCRETE CURB AND GUTTER B624 (MODIFIED)	LIN FT	977	\$	\$
55	2531.504	7" CONCRETE DRIVEWAY PAVEMENT	SQ YD	275	\$	\$
56	2531.504	8" CONCRETE DRIVEWAY PAVEMENT	SQ YD	33	\$	\$
57	2531.618	TRUNCATED DOMES	SQ FT	92	\$	\$
58	2535.503	BITUMINOUS CURB	LIN FT	12	\$	\$
59	2563.601	TRAFFIC CONTROL	LUMP SUM	1	\$	\$
60	2564.518	SIGN PANELS TYPE C	SQ FT	42	\$	\$
61	2564.602	SIGN SUPPORT	EACH	1	\$	\$
62	2564.602	REMOVE AND REINSTALL SIGN	EACH	1	\$	\$
63	2565.616	TEMPORARY SIGNAL SYSTEM	SYSTEM	1	\$	\$
64	2573.502	STORM DRAIN INLET PROTECTION	EACH	22	\$	\$
65	2573.502	CULVERT END CONTROLS	EACH	7	\$	\$
66	2573.503	SILT FENCE, TYPE HI	LIN FT	1,848	\$	\$
67	2574.505	SUBSOILING	ACRE	0.3	\$	\$
68	2574.505	SOIL BED PREPARATION	ACRE	0.3	\$	\$
69	2574.507	COMMON TOPSOIL BORROW	CU YD	70	\$	\$
70	2574.508	FERTILIZER TYPE 3	POUND	77	\$	\$
71	2575.504	SODDING TYPE LAWN	SQ YD	448	\$	\$
72	2575.505	SEEDING	ACRE	0.2	\$	\$
73	2575.508	SEED MIXTURE 36-311	POUND	6	\$	\$
74	2575.604	ROLLED EROSION PREVENTION CATEGORY 35	SQ YD	811	\$	\$
75	2582.503	4" SOLID LINE MULTI-COMPONENT GROUND IN (WR)	LIN FT	1,274	\$	\$
76	2582.503	4" DOUBLE SOLID LINE MULTI-COMPONENT GROUND IN (WR)	LIN FT	2,971	\$	\$

TOTAL: \$ _____



Purchasing Division
Finance Department
Room 120
411 West First Street
Duluth, Minnesota 55802

218-730-5340
purchasing@duluthmn.gov

*******ADVERTISEMENT FOR BIDS (with corrected DBE goal)*******
BIDS DUE FRIDAY, MAY 15, 2020 AT 10:00 AM

BID NUMBER: 20-99324

PROJECT NAME: East Superior Street Reconditioning

PROJECT NUMBER: S.P. 118-164-003, MN Project No. STPF 6920(230), City Project 1820

START DATE: June 8, 2020

The City of Duluth, Minnesota requests sealed bids for the above named project. **Due to the closure of City Hall as a result of the COVID-19 pandemic, all bids must be submitted electronically through Bid Express® at www.bidexpress.com. Bid bonds must also be submitted electronically – either thru Surety2000 or SurePath in the BidExpress solicitation, or emailed to purchasing@duluthmn.gov prior to the bid opening. If submitting a certified check or bank draft, bidder must contact Purchasing seven days prior to bid opening to make arrangements.**

The City Purchasing Agent or her designee will live stream a public bid opening immediately after the deadline for receiving bids. Please visit <https://www.duluthmn.gov/purchasing/bids-request-for-proposals/> and select the appropriate link for this project.

PROJECT DESCRIPTION & MAJOR WORK ITEMS: This work provides for the rehabilitation of East Superior Street between Lester River Road and Trunk Highway 61, including concrete pavement rehabilitation, concrete pavement replacement, bituminous overlay, bituminous full depth reclamation, storm sewer, concrete walk, concrete curb and gutter, ADA improvements and temporary signal.

PREBID MEETING: A pre-bid meeting will not be held for this project.

Questions pertaining to this project should be directed to: Patrick Loomis, ploomis@duluthmn.gov, 218-269-5201.

Plans and specifications may be viewed and downloaded at no cost at www.bidexpress.com. Bidders must create a free account with Bid Express®; and login to search for city projects (search by "City of Duluth" or bid number). Bid Express® does charge a nominal fee for bid submission. More information can be found at https://www.bidexpress.com/vendor_resources

Plans and specifications are on file for inspection at the City Engineering office, Minnesota Builder's Exchange, Builder's Exchange of Wisconsin and Blue Book Building and Construction Network.

Bidders must review the 2019 edition of the City of Duluth Public Works/Utilities Department – Engineering Division Standard Construction Specifications (available at <https://www.duluthmn.gov/engineering/standard-construction-specifications/>) as these Specifications are incorporated by reference.

Bid surety in an amount equal to five per cent (5%) of the total bid shall be submitted with each bid and be received by Purchasing by the bid due date and time. Bid bonds must be submitted electronically using Surety 2000 or SurePath or emailed to purchasing@duluthmn.gov. **NO IN-PERSON DROPOFFS ARE ALLOWED.** If submitting a certified check or bank draft, bidder must contact Purchasing seven days prior to bid opening to make arrangements.

The contractor must take affirmative action to ensure that the employees and applicants for employment are not discriminated against because of their race, color, creed, sex or national origin, and must meet the affirmative action goals. Contractors are encouraged to subcontract with Disadvantaged Business Enterprises when possible.

No alternatives to the specification will be considered unless specifically requested. Erasures or other changes to the bid must be initialed and dated, however no special conditions shall be made or included in the bid form by the bidder.

The City of Duluth reserves the right to split the award where there is a substantial savings to the City, to waive informalities and to reject any and all bids. Price may not be the only consideration for bid award. Bids must be firm for a minimum of 90 days.



Purchasing Division
Finance Department
Room 120
411 West First Street
Duluth, Minnesota 55802

218-730-5340
purchasing@duluthmn.gov

Please note that the following requirements also apply to this project, and any additional required documents must be submitted prior to award/contract execution.

1. **Insurance** – Contractor must provide proof of Public Liability and Automobile Liability Insurance with limits not less than \$1,500,000 Single Limit prior to the commencement of work. The City of Duluth must be named as an additional insured. Please refer to the draft Contract, Section 7, which can be found in the contract documents at the bottom of the Bid Express solicitation.
2. **Performance & Payment Bonds** – The awarded contractor will be required to submit performance and payments bonds in the full amount of the project cost prior to award.
3. **Out of State Contractor** - Unless a State of Minnesota Certificate of Exemption is provided, any out-of-state bidder receiving a bid award will have 8% retained from invoice payments on any contracts over \$50,000. Submit a signed copy of the signed exemption form when submitting Payment and Performance Bonds. This form may be found at: http://www.revenue.state.mn.us/Forms_and_Instructions/sde.pdf
4. **Prevailing Wage** - Not less than the minimum salaries and prevailing wages as set forth in the contract documents must be paid on this project.

The City of Duluth is an Equal Opportunity Employer. Contractor shall comply with all applicable Equal Employment Opportunity laws and regulations.

Minimum wage rates to be paid by the Contractors have been predetermined and are subject to the Work Hours Act of 1962, P.L. 87-581 and implementing regulations.

**READ CAREFULLY THE WAGE SCALES AND DIVISION A OF THE SPECIAL
PROVISIONS AS THEY AFFECT THIS/THESE PROJECT/PROJECTS**

The Minnesota Department of Transportation hereby notifies all bidders:

in accordance with Title VI of the Civil Rights Act of 1964 (Act), as amended and Title 49, Code of Federal Regulations, Subtitle A Part 21, Non-discrimination in Federally-assisted programs of the Department of Transportation, it will affirmatively assure that in any contract entered into pursuant to this advertisement, disadvantaged business enterprises will be afforded maximum opportunity to participate and/or to submit bids in response to this invitation, and will not be discriminated against on the grounds of race, color, disability, age, religion, sex or national origin in consideration for an award;

in accordance with Title VI of the Civil Rights Act of 1964 as amended, and Title 23, Code of Federal Regulations, Part 230 Subpart A-Equal Employment Opportunity on Federal and Federal-Aid Construction Contracts (including supportive services), it will affirmatively assure increased participation of minority groups and disadvantaged persons and women in all phases of the highway construction industry, and that on any project constructed pursuant to this advertisement equal employment opportunity will be provided to all persons without regard to their race, color, disability, age, religion, sex or national origin;

in accordance with the Minnesota Human Rights Act, Minnesota Statute 363A.08 Unfair discriminatory Practices, it will affirmatively assure that on any project constructed pursuant to this advertisement equal employment opportunity will be offered to all persons without regard to race, color, creed, religion, national origin, sex, marital status, status with regard to public assistance, membership or activity in a local commission, disability, sexual orientation, or age; in accordance with the Minnesota Human Rights Act, Minnesota Statute 363A.36 Certificates of Compliance for Public Contracts, and 363A.37 Rules for Certificates of Compliance, it will assure that appropriate parties to any contract entered into pursuant to this advertisement possess valid Certificates of Compliance.



Purchasing Division
Finance Department
Room 120
411 West First Street
Duluth, Minnesota 55802

218-730-5340
purchasing@duluthmn.gov

If you are not a current holder of a compliance certificate issued by the Minnesota Department of Human Rights and intend to bid on any job in this advertisement you must contact the Department of Human Rights immediately for assistance in obtaining a certificate.

The following notice from the Minnesota Department of Human Rights applies to all contractors:

"It is hereby agreed between the parties that Minnesota Statute, section 363A.36 and Minnesota Rules, parts 5000.3400 to 5000.3600 are incorporated into any contract between these parties based on this specification or any modification of it. A copy of Minnesota Statute 363A.36 and Minnesota Rules, parts 5000.3400 to 5000.3600 is available upon request from the contracting agency."

"It is hereby agreed between the parties that this agency will require affirmative action requirements be met by contractors in relation to Minnesota Statute 363A.36 and Minnesota Rules 5000.3600. Failure by a contractor to implement an affirmative action plan or make a good faith effort shall result in revocation of its certificate or revocation of the contract (Minnesota Statute 363A.36, Subd. 2 and 3)."

A minimum goal of 2.8 % Good Faith Effort to be subcontracted to Disadvantaged Business Enterprises.

The City of Duluth reserves the right to waive informalities and to reject any or all bids.

Amanda Ashbach, City Purchasing Agent

SPECIAL PROVISIONS
S.P. 118-164-003
MN Project No. STPF 6920(230)
City Job Number: 1820
East Superior Street Reconditioning – Lester River Road to TH 61 Expressway
Issued – Addendum No. 01 - May 7, 2020

SP-57 (2564) TRAFFIC SIGNS AND DEVICES The provisions of MnDOT 2564 and the City of Duluth Standard Specification are hereby modified as follows:

SP-57.1 MATERIALS

A. The provisions of 2564.2 are supplemented as follows:

1. All sign faces shall consist of 3-M brand, Diamond Grade DG³ reflective sheeting or approved equal, unless authorized by the City of Duluth.
2. All traffic signs shall be fastened to sign posts with 316 stainless steel bolts, washers, and Nyloc nuts. The washer shall be separated from sign sheeting by a nylon washer.
3. Flanged or u-channel posts are not acceptable. Only tubular posts are allowed as shown on the plans and in the details.
4. 'No Parking' signs shall be 12" x 18" standard signs meeting the requirements of the MN MUTCD.

SP-57.2 CONSTRUCTION REQUIREMENTS

A. The 2019 Edition of the City of Duluth Public Works and Utilities Department Construction Standards are incorporated by reference on the plan cover sheet. These are modified as follows:

1. Delete Standard detail T-2. Replace with DWG# MN2018-1E dated 3/27/2020 and attached to this addendum. The internal sleeve is required (not optional) for the concrete surface mounts as per plan sheet 3 of 6, general notes.

B. The provisions of 2564.3A, "Traffic Signs and Devices: Construction Requirements: General" are modified and supplemented as follows:

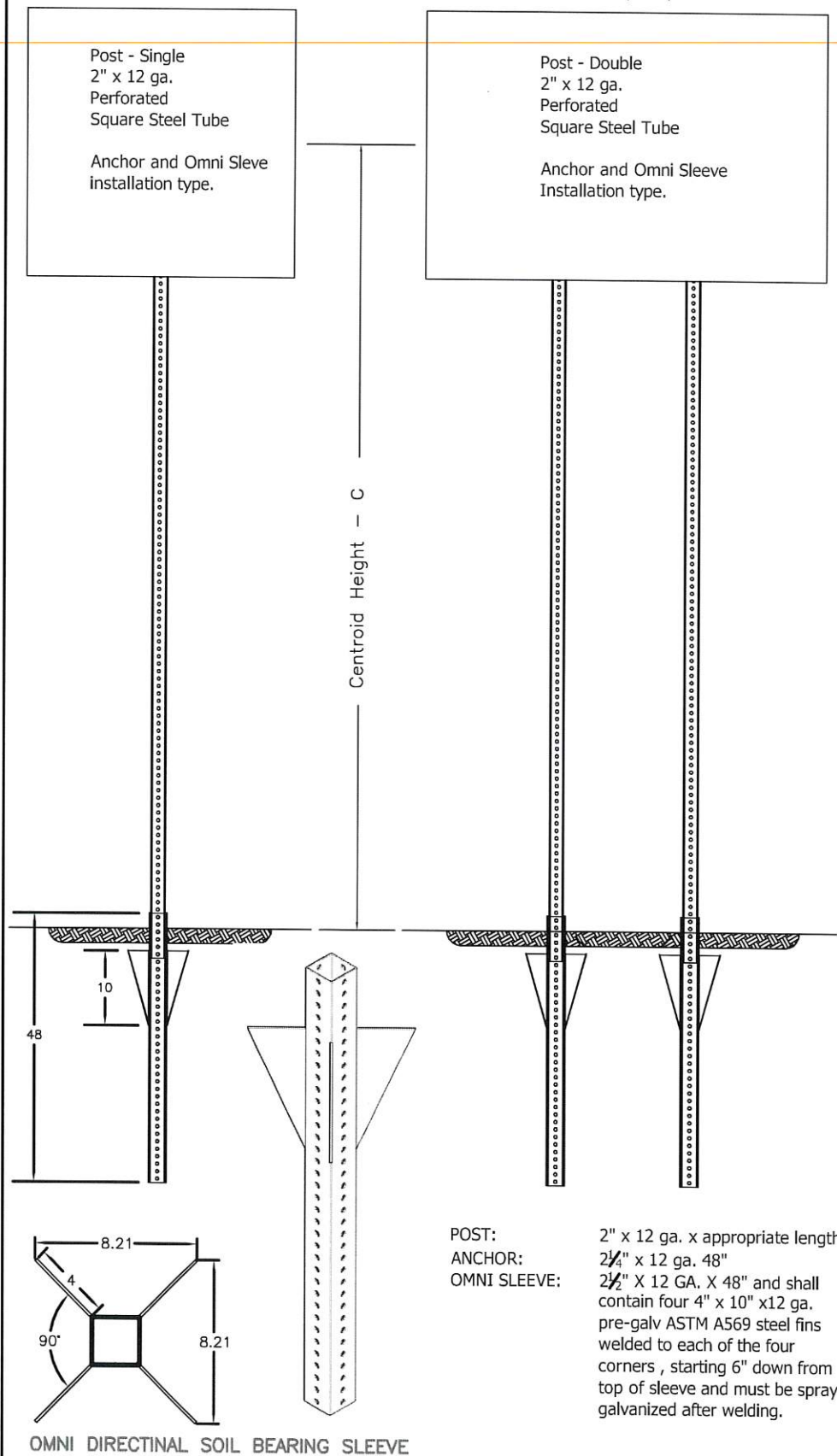
1. All traffic signs shall be installed to a minimum height of seven feet to the bottom of the sign, per the MN MUTCD.
2. All traffic posts installed shall conform to DWG# MN2018-1E dated 3/27/2020, with use of MnDOT approved/qualified products. All bases shall be located in an area clear of utilities to a distance of two feet in all directions, and a minimum of two feet behind the face of curb.

SP-57.3 METHOD OF MEASUREMENT & BASIS OF PAYMENT

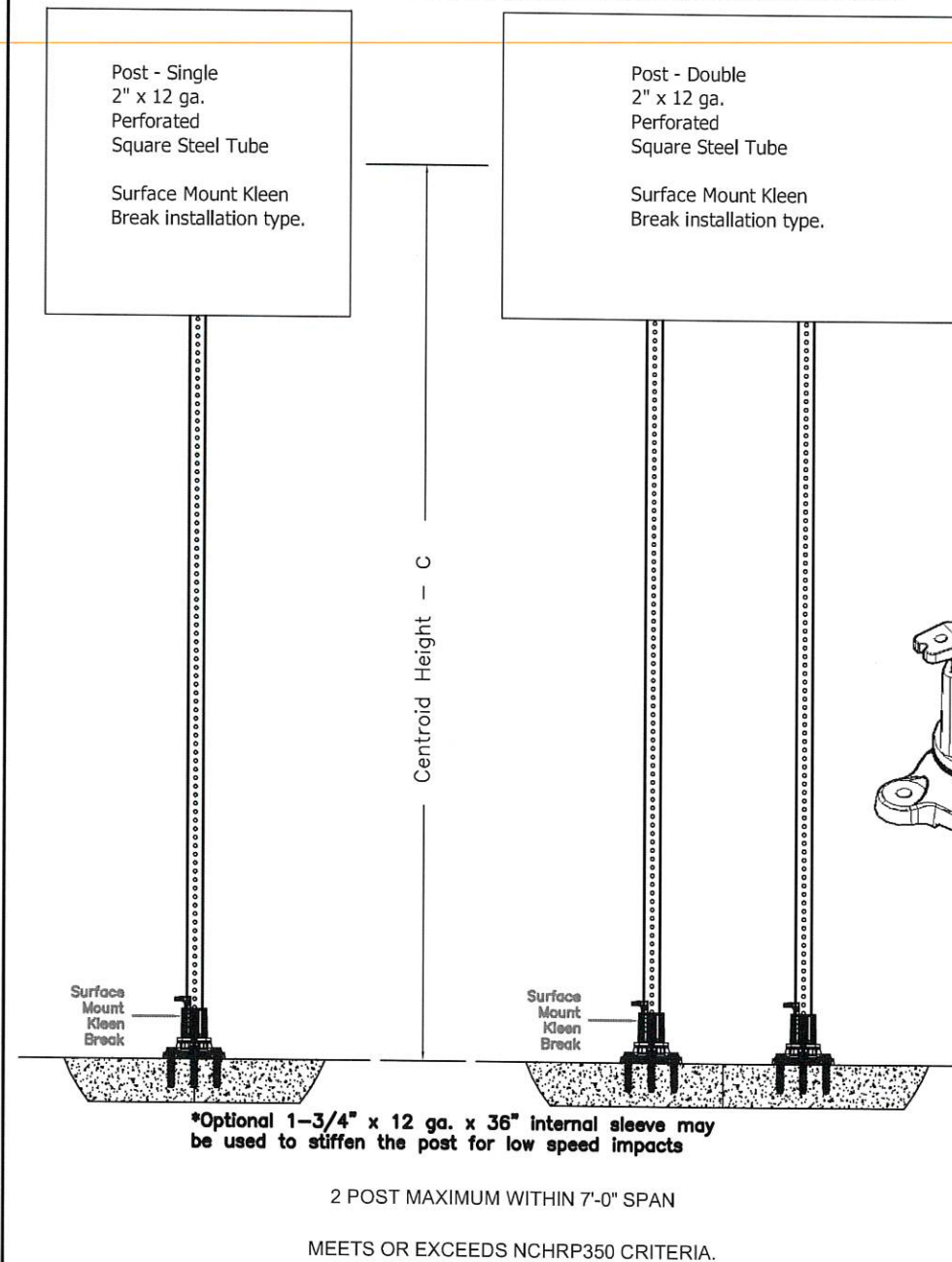
A. Item SIGN PANELS TYPE C shall be measured and paid for in accordance with MnDOT 2564.4 and 2564.5.

B. Item SIGN SUPPORT shall be measured by the EACH, satisfactorily furnished and installed, and shall be compensation in full for all work, post and mounting hardware to mount sign.

PERFORATED SQUARE STEEL TUBE POST, ANCHOR, & OMNI SLEEVE (PSST) SYSTEM:



PERFORATED SQUARE STEEL TUBE POST (PSST), SURFACE MOUNT KLEEN BREAK SYSTEM.

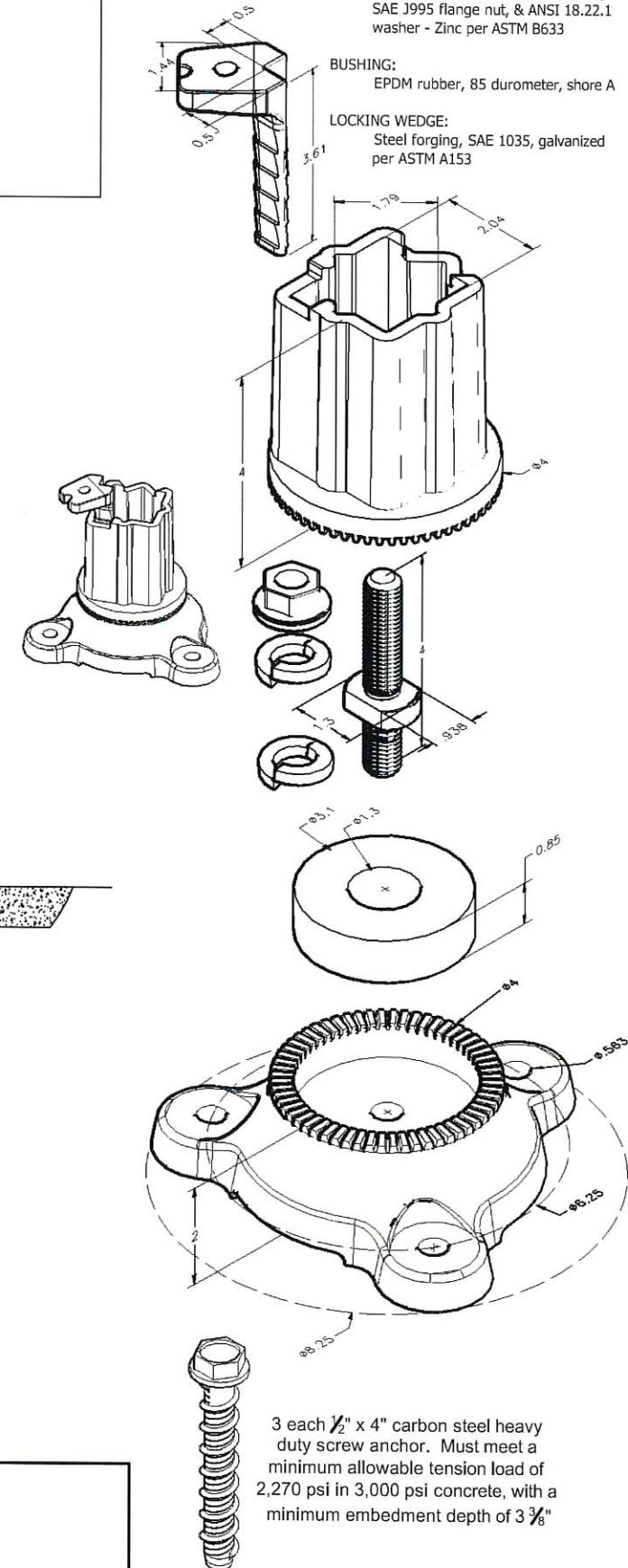


SURFACE MOUNT BASE AND POST RECEIVER:
Ductile Class ASTM A536, Grade
65-45-12, galvanized per ASTM A153

SHEAR BOLT HARDWARE SET:
3/8"-11 unc SAE J429 shear bolt set,
SAE J995 flange nut, & ANSI 18.22.1
washer - Zinc per ASTM B633

BUSHING:
EPDM rubber, 85 durometer, shore A

LOCKING WEDGE:
Steel forging, SAE 1035, galvanized
per ASTM A153



Perforated Square Steel Tube shall be ASTM A1011, Grade 50 steel (ASTM A653, G90) with an average minimum of 60,000 psi yield strength, after cold-forming. It must be corner welded, scarfed after welding, and zinc coated after scarfing. A chromate conversion coating and a clear organic polymer topcoat shall be applied. Interior and exterior shall be galvanized. Tube shall be perforated with 7/16" holes, spaced 1" apart, along the centerline the entire length on all four sides.