



**Purchasing Division**  
*Finance Department*  
Room 120  
411 West First Street  
Duluth, Minnesota 55802

218-730-5340  
purchasing@duluthmn.gov

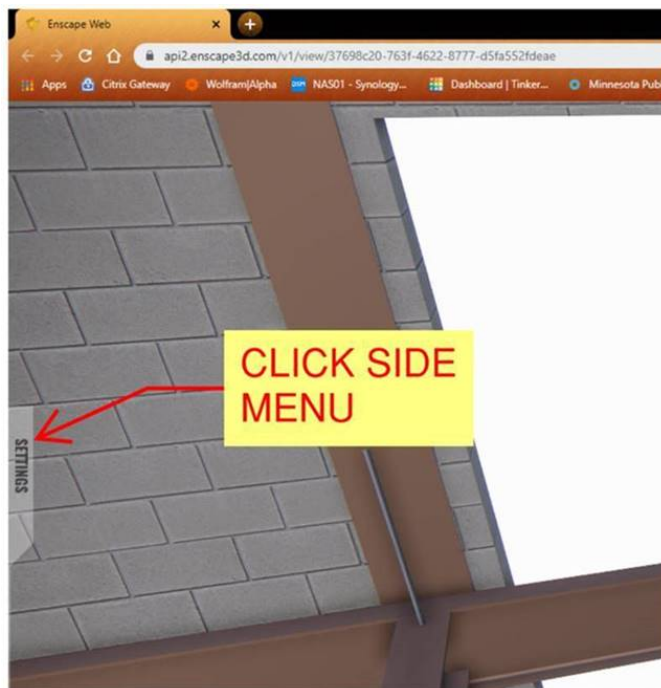
**Addendum 1**  
**Bid 20-10AA**  
**Duluth Energy Systems HW Distribution System Balance of Plant**

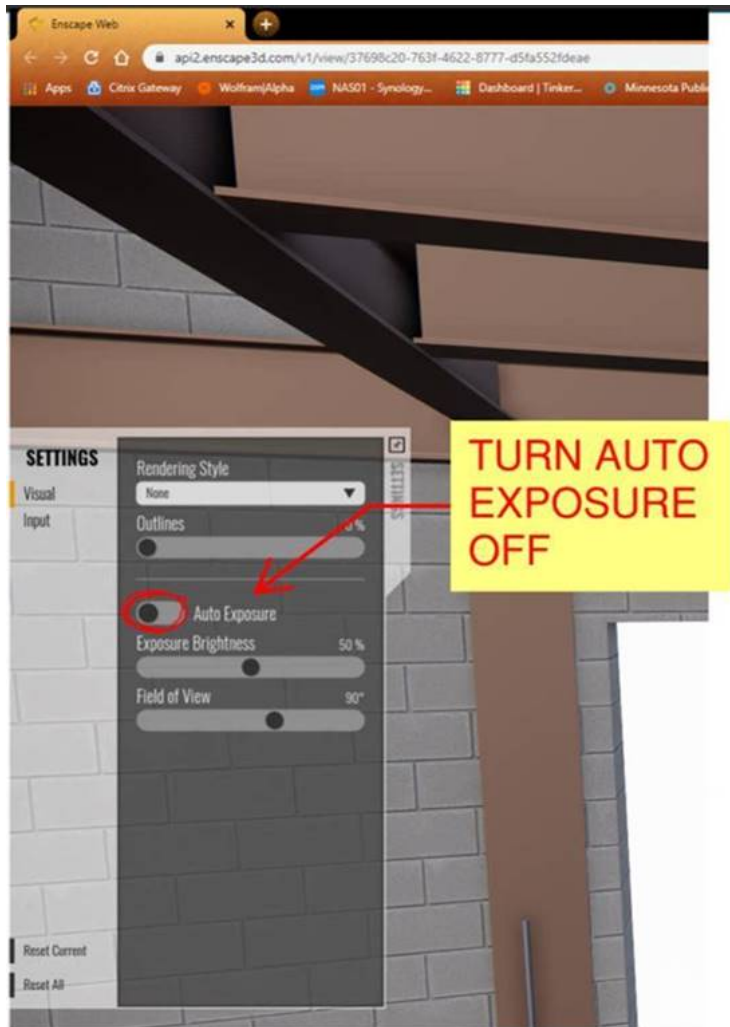
This addendum serves to notify all bidders of the following changes to the solicitation documents:

A 3D Model of the system is available for viewing:

- The link below will open a model of the system and is generally representative of what is depicted in the Construction Drawings. Please note this rendering isn't completely accurate in the depictions of the trim; as actual OEM models may vary in appearance and dimensions.
- The online model is best viewed in a Chrome browser. The navigation menu will be shown along the bottom-middle of the browser window. If you do not see it then has been inadvertently hidden. Press 'H' to bring the menu back.
- If the model appears dark open the side settings bar (illustrated below) to disable 'Auto Exposure'

<https://api2.enscape3d.com/v1/view/37698c20-763f-4622-8777-d5fa552fdeae>





Please acknowledge receipt of this Addendum by checking the acknowledgment box within the Bid Express solicitation.

Posted: 4/16/2020