

# SUPERIOR STREET RECONSTRUCTION

## Public Open House

**NOVEMBER 16, 2017**

DOORS OPEN AT 4:30 PM | PRESENTATION AT 5:00 PM

**Radisson Hotel | Great Hall**  
505 West Superior Street, Downtown Duluth



**Superior Street Reconstruction** CITY OF DULUTH, MINNESOTA



# Welcome!



## SUPERIOR STREET RECONSTRUCTION Public Open House

**NOVEMBER 16, 2017**

DOORS OPEN AT 4:30 PM | PRESENTATION AT 5:00 PM

Radisson Hotel | Great Hall  
505 West Superior Street, Downtown Duluth

**Superior Street Reconstruction** CITY OF DULUTH, MINNESOTA

LHB | SRF Consulting Group, Inc.



# Agenda

- *Opening Remarks*
- *Project Sequencing*
- *Phasing Strategy & Traffic Control*
- *Access During Construction*
- *Cost Participation*
- *Q&A*



# *Opening Remarks*



Emily Larson  
Mayor  
City of Duluth

# *Opening Remarks*



Keith Hamre

Director, Planning & Construction Services  
City of Duluth



# Project Overview



Typical Construction Season:  
Apr/May thru October



0 800' 1600'

# Project Sequencing

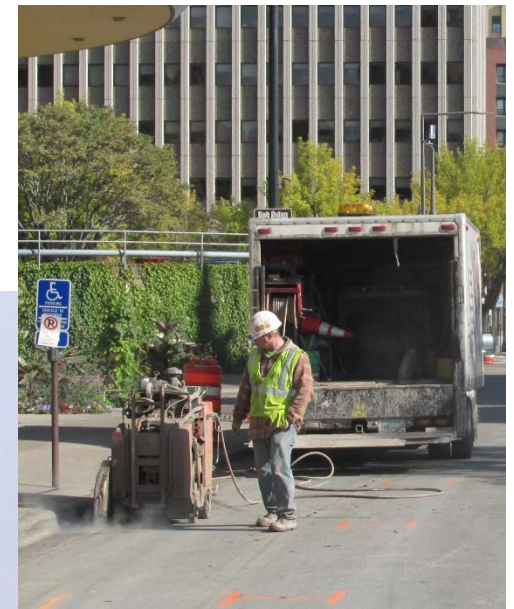
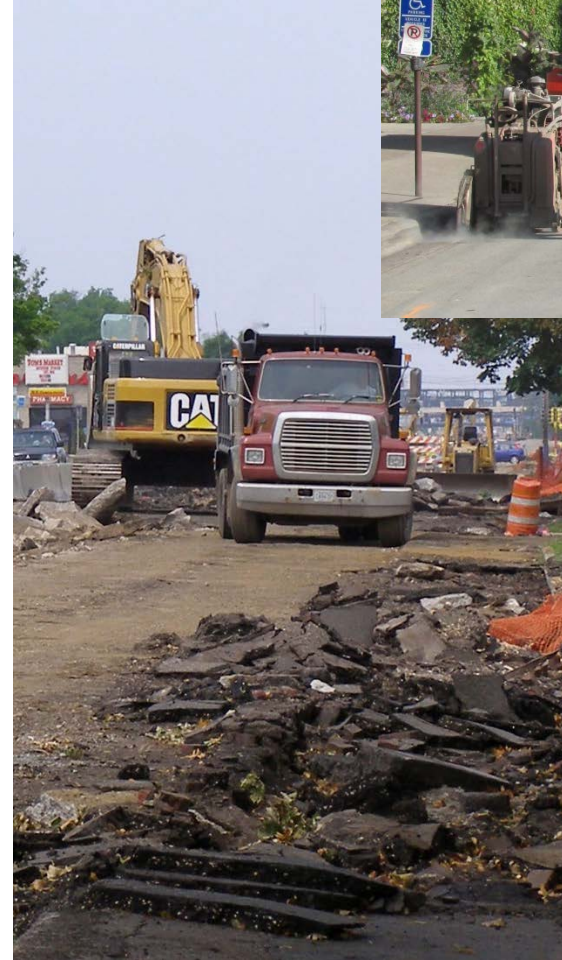
- *Traffic Control Installation & Site Perimeter Controls*
- *Contractor Mobilization*





# Project Sequencing

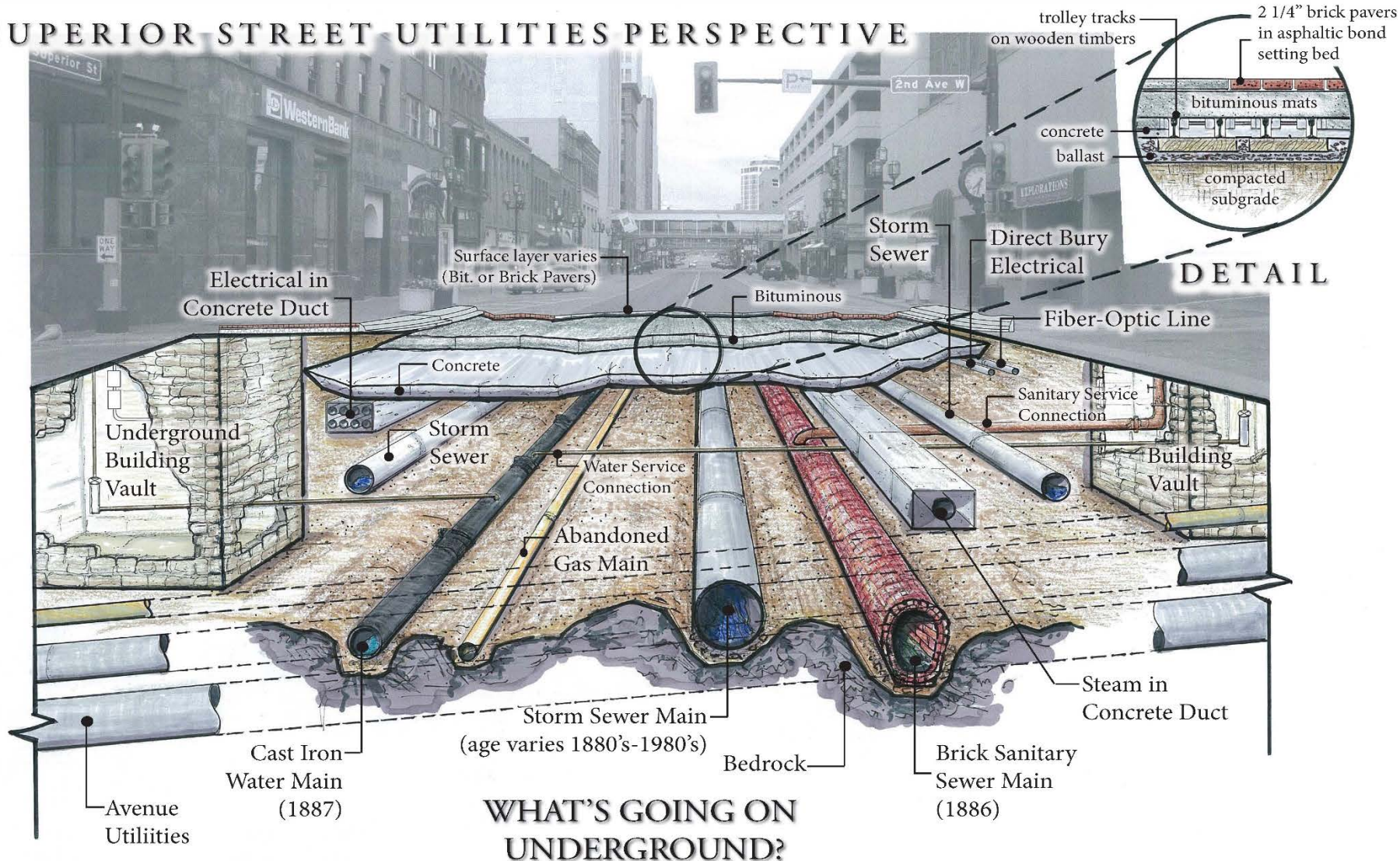
- *Demolition & Removals*
  - *Removals of all surface features: lighting, kiosks, bollards, etc...*
  - *Removal of existing brick walks and roadway paving.*
  - *Removals of historical trolley track system beneath surface.*



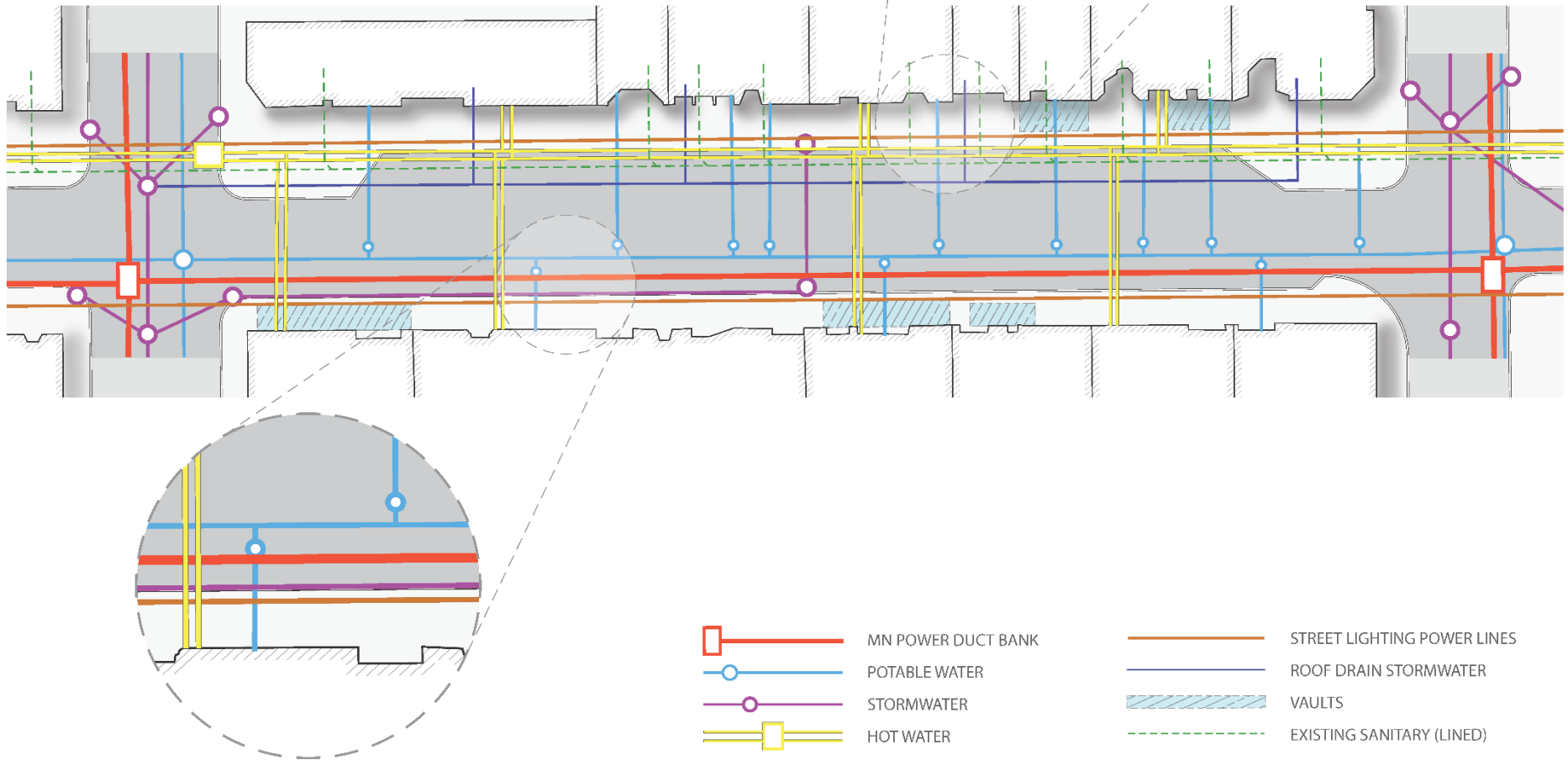


# Project Sequencing - Utilities

## SUPERIOR STREET UTILITIES PERSPECTIVE



# Representative Utility Layout





# Utilities - Water

- *Water*

- *Removal & Replacement of existing 1880s vintage 16-inch Cast Iron water main with new 20-inch HDPE water main.*
- *Removal & replacement of existing water services. Requires temporary water main service system at street level.*
- *Typically on south side of Superior Street at a depth of 7-ft to 10-ft and at Avenues (crossing Superior St).*
- *Pipe is butt fused generally outside of trench then pulled into the excavated water main trench.*

# Utilities – Water

*Services & Service Interruptions (Req'd 2X):*

- *Office / Non-Retail—After 5 pm*
- *Retail—After close of business*
- *Bars—After 2 am and probably no later than 10 AM*
- *Restaurants/Bars—Late Night / Morning TBD*
- *Hotels—between Midnight and 5 AM. Includes Sheraton, Holiday, Voyageur Inn and Radisson.*
- ***Service Interruptions will be coordinated during construction to provide notice and input from building owners / businesses.***





# Utilities – Water

## *Service Modifications*

- *Owners who have elected to do so will be given 2 weeks notice prior to Contractor exposing existing service.*
- *Building Owners will be given a time window to upsize existing service using Owner work forces.*
- *Failure to provide new service connection in the time frame specified will result in connection of new service to existing service as-is.*
- *Further information to be provided by City prior to construction.*



# Utilities – Storm Sewer

## Storm Sewer

- *Removal and Replacement of storm sewer within project limits.*
- *Connection of building roof drains to new storm sewer.*
- *Installation of stormwater treatment structures at 2<sup>nd</sup>, 3<sup>rd</sup> & 4<sup>th</sup> Avenues East.*
- *Typically 2<sup>nd</sup> deepest utility 5-ft depth +/-.*





# Utilities – Hot Water

- *Up to 28" outside diameter pre-insulated hot water pipe with up to 20" inside diameter steel carrying pipe.*
- *PVC jacket fusion welded and insulated at seams to prevent water intrusion.*
- *One supply pipe, one return pipe. Typically 3-ft deep +.*
- *Typically on north side of street.*
- *Service connections to buildings.*



# Utilities- Electrical Duct Bank

- *Installation of concrete encased duct bank consisting typically of (6) 6-inch PVC conduits encased in concrete.*
- *Typically 3-ft + deep near centerline of Superior Street.*





# Street Construction

- Concrete roadway, curbs and walks with varying colors and textures constructed on about 2.5-ft of granular and aggregate roadway base.
- Work will require multiple separate pours and time for curing prior to opening to traffic.



# Street Furnishings & Amenities

- *Street furniture: benches, bike racks, waste receptacles*
- *Trees, tree grates and planters*
- *Lighting*





# CONSTRUCTION TIMELINE

## MAJOR CONSTRUCTION ELEMENTS

START OF CONSTRUCTION

TRAFFIC CONTROL

SITE SAFETY/PERIMETER CONTROLS

DEMOLITION & REMOVALS

UTILITIES

TEMPORARY WATER SYSTEM

WATER MAIN CONSTRUCTION AND LATERALS

STORM SEWER

HOT WATER SYSTEM

ELECTRICAL DUCT BANK

CITY ELECTRICAL POWER SYSTEM

VAULTS/AREAWAYS

ROADWAY

ROADWAY SUBCUT

ROADWAY BASE

CURB & GUTTER

STREET PAVING

SIDEWALKS

STRIPING & SIGNAGE

SIGNALS

STREET LIGHTING

STREET AMENITIES/  
FURNITURE

LANDSCAPING

END OF CONSTRUCTION



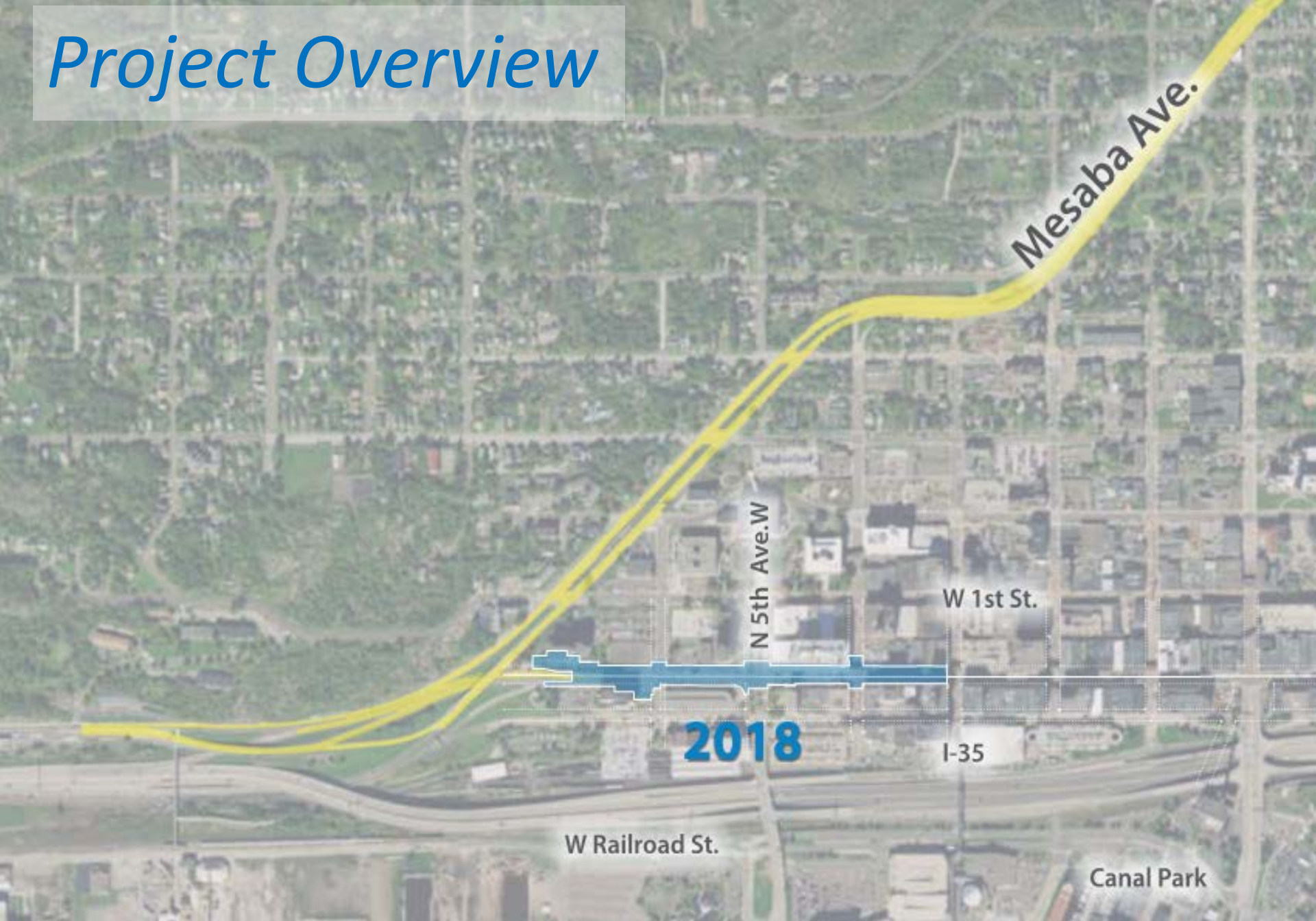


# Project Overview

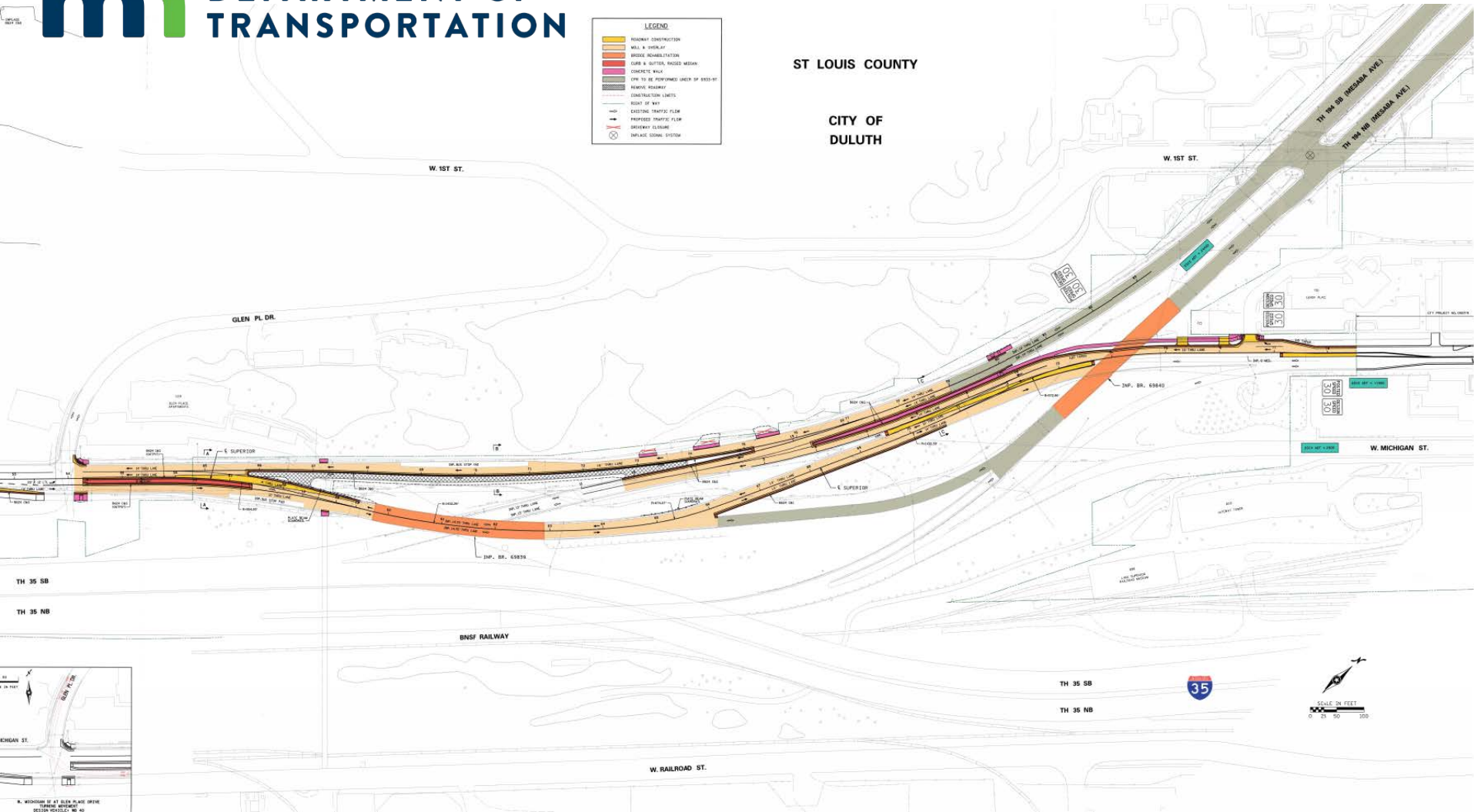




# Project Overview



# Mesaba Avenue Project



<http://www.dot.state.mn.us/d1/projects/hwy194-mesaba-duluth/index.html>

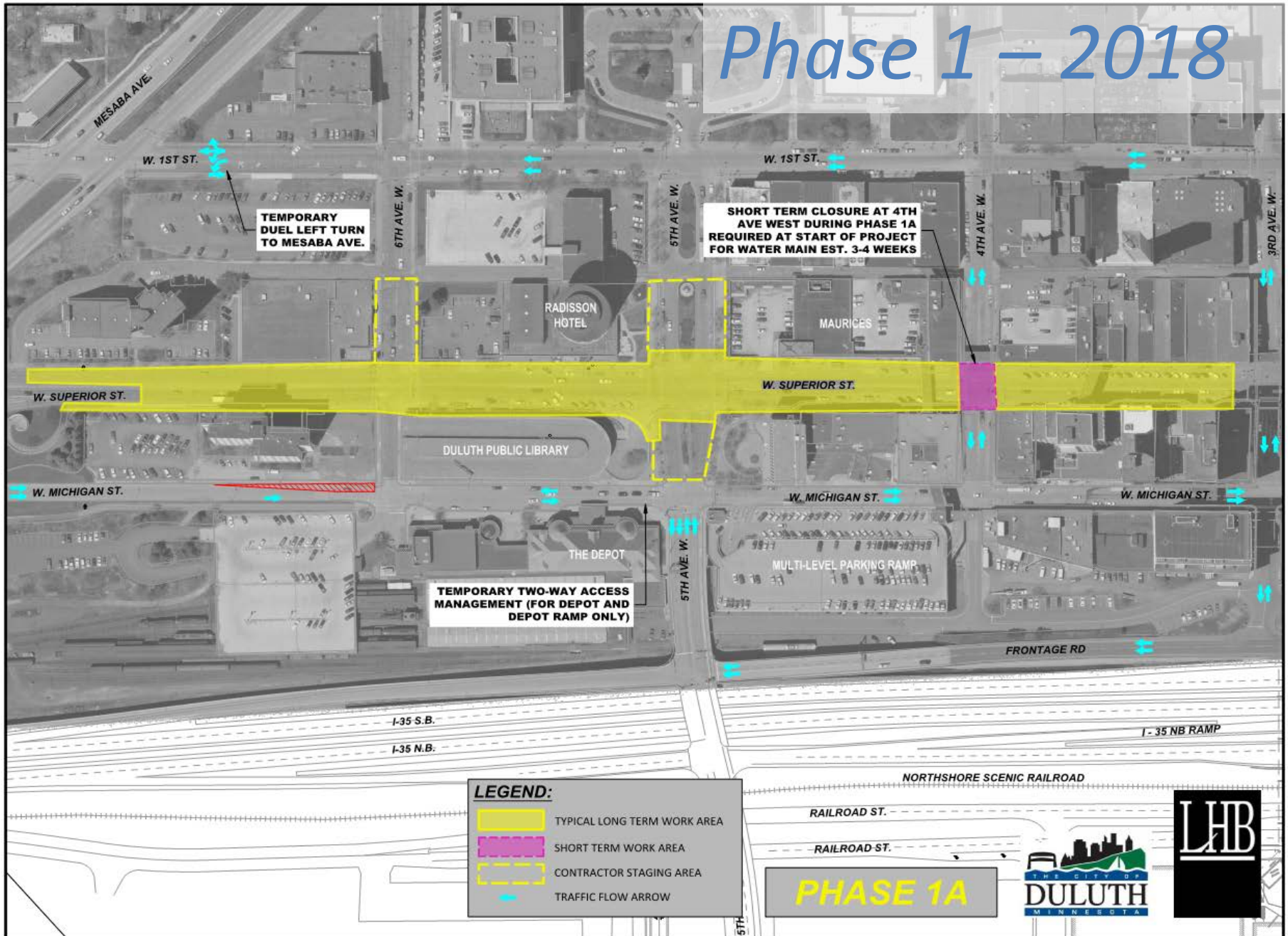


# Phase 1 – 2018

- *Major Elements*
  - *MnDOT Mesaba Avenue Project*
  - *1<sup>st</sup> Year of Project*

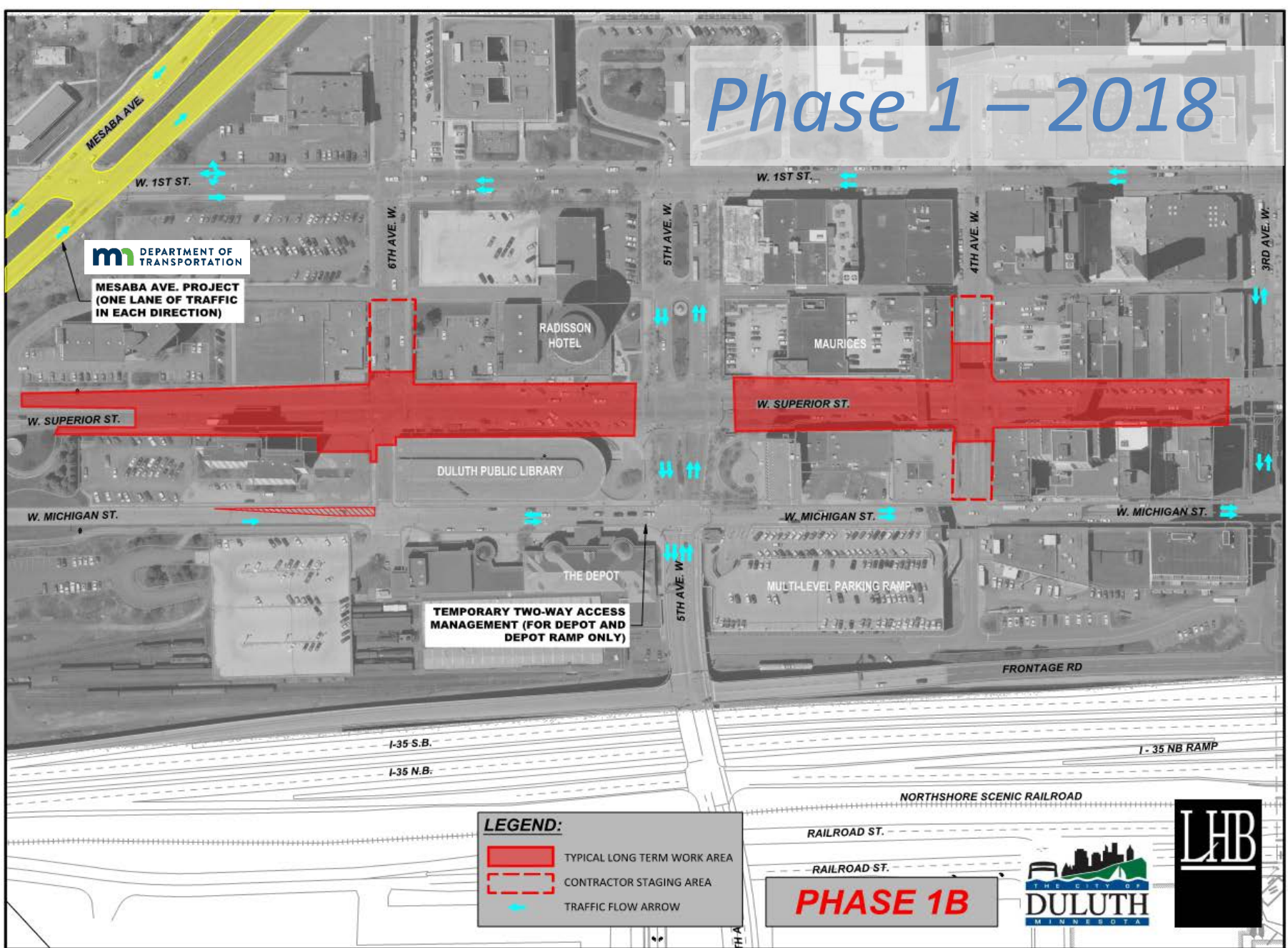


# Phase 1 – 2018





# Phase 1 – 2018



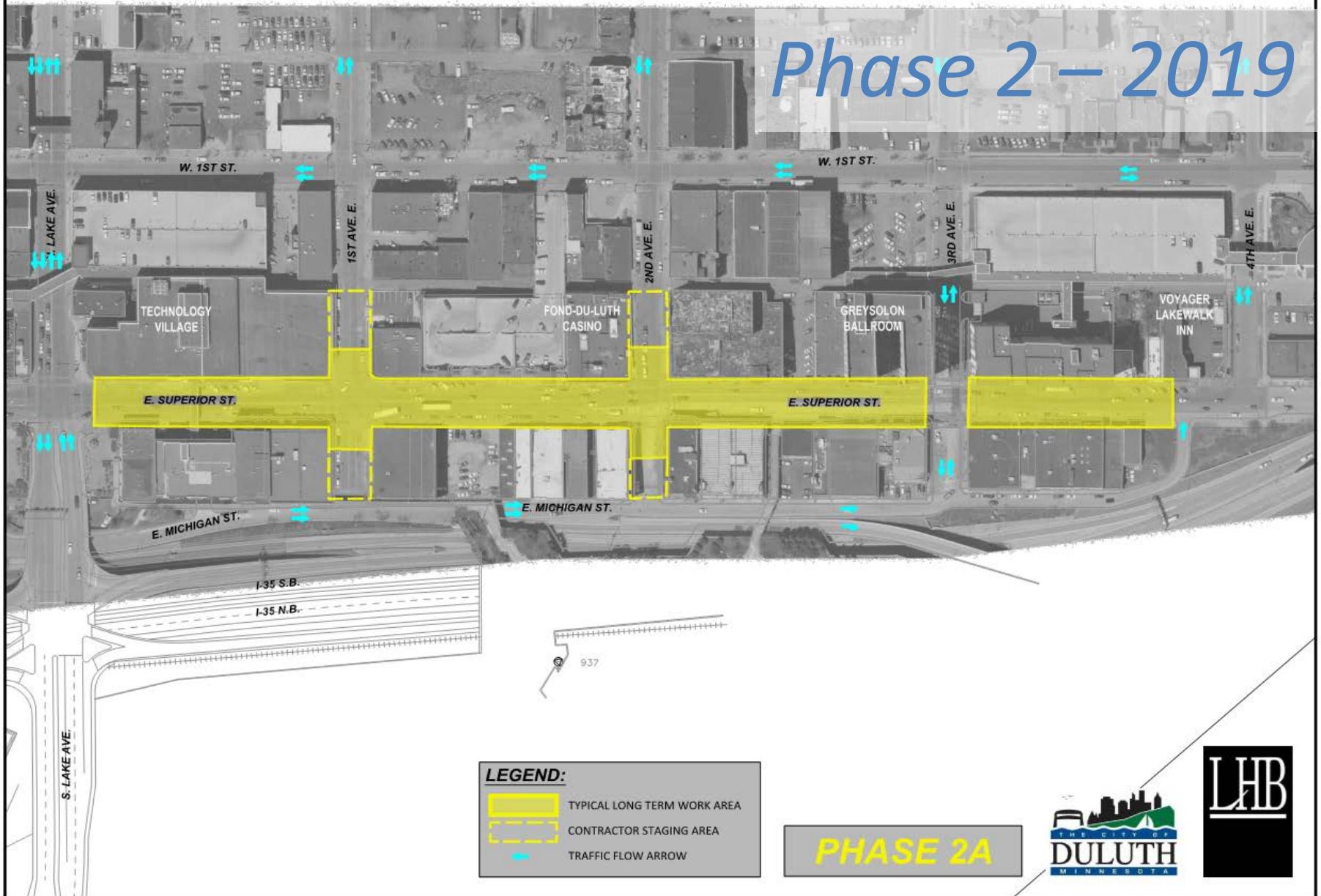
# Phase 2 - 2019

- *Major Elements*
  - *Canal Park Water Connection*
  - *Grandma's Marathon*
  - *Utility Work (Phase Includes Steam)*

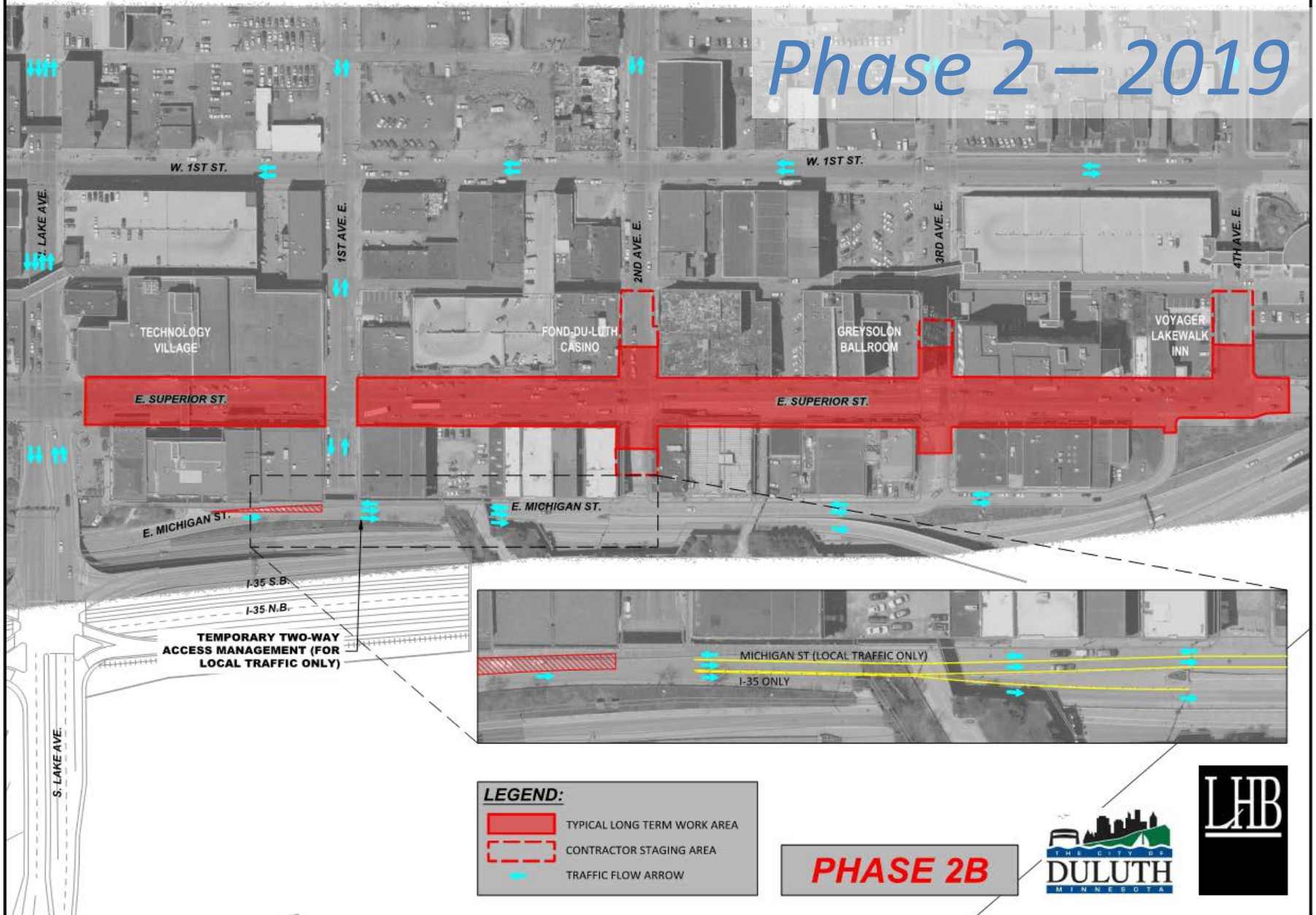




# Phase 2 – 2019



# Phase 2 – 2019



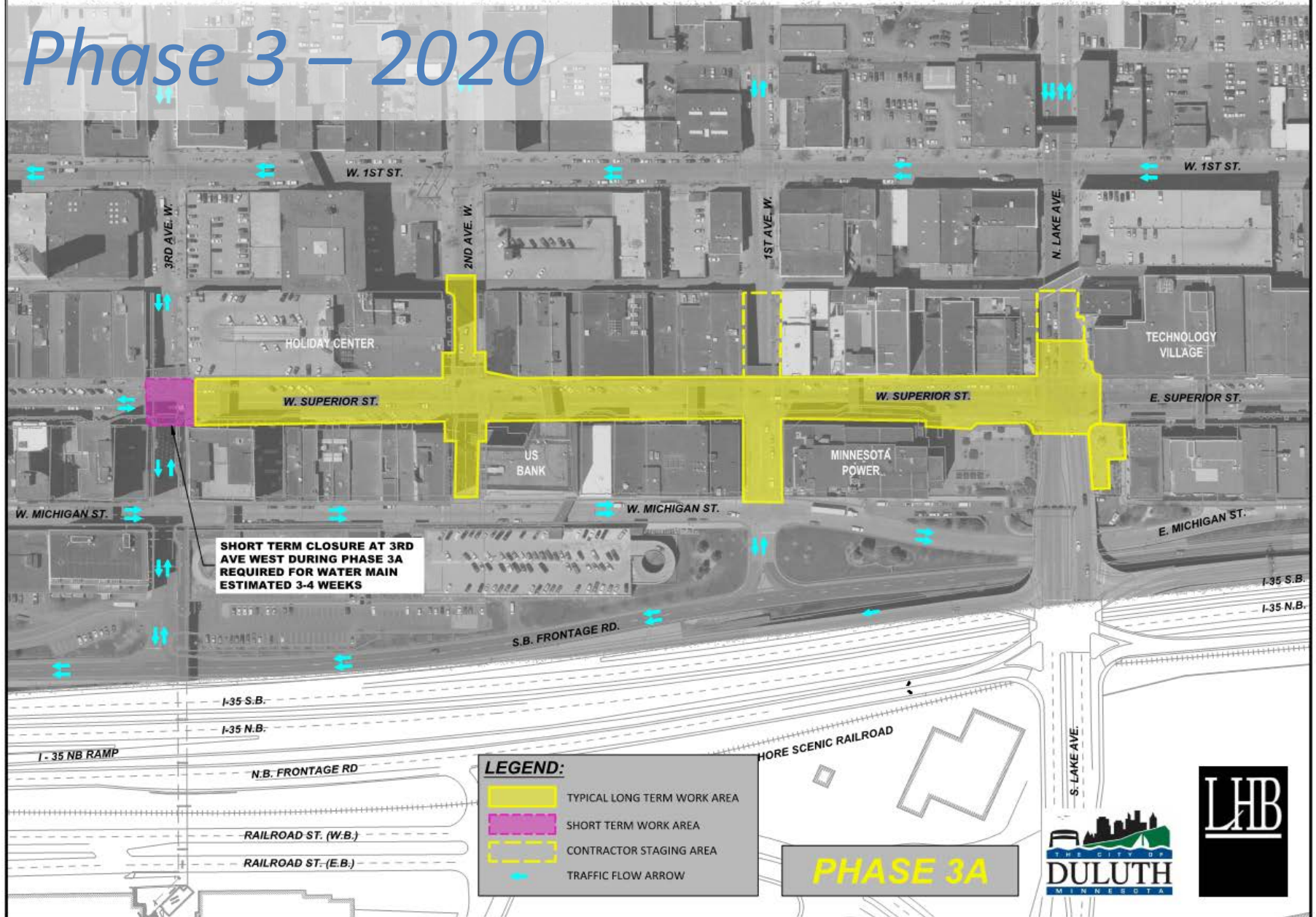


# Phase 3 – 2020

- Major Elements
  - Lake Avenue Bridge & Plaza
  - Work on Avenues
    - 1<sup>st</sup> Ave West (South) – Hot Water
    - 2<sup>nd</sup> Ave West (North) – Power
    - 2<sup>nd</sup> Ave West (South) - Water

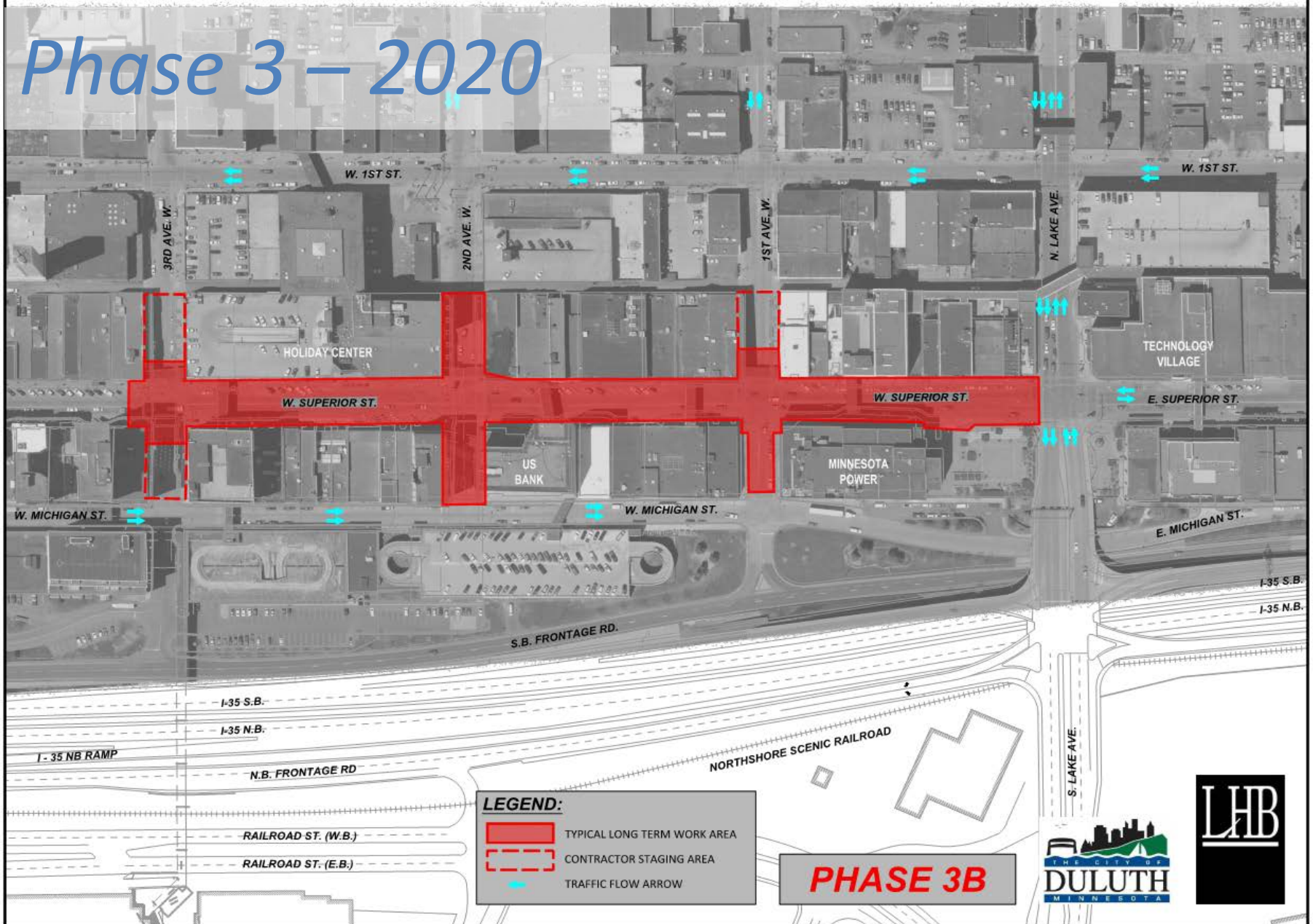


# Phase 3 – 2020





# Phase 3 – 2020



# Access During Construction

- *Pedestrian traffic maintained to Superior Street entries during normal business hours, except for short, coordinated periods.*
- *Pedestrian access route along Superior Street between Avenues maintained on at least one block face at all times. Use of skyways encouraged.*
- *Building deliveries will need to be facilitated by building owners / businesses from locations off Superior Street such as Michigan Street or 1<sup>st</sup> alley. Avenue access may be limited at any given time.*
- *Avenue vehicle traffic will be maintained where practicable for each phase as shown in phasing plans.*



# *Access During Construction*

- *Parking at ramps (1 hour free) with signage at ramps identifying routes*
- *Alley access and signage*
- *Skywalk wayfinding and signage*

# WORD ON THE STREET

Superior Street Reconstruction





THE LATEST  
WORD



PROJECT  
BACKGROUND



PROJECT  
DESIGN



PARKING &  
SKYWALK

## STAY UP-TO-DATE!

Subscribe to the Superior Street Reconstruction press releases & weekly newsletters for information on road closures, parking and other project related updates!

[Sign-Up](#)

## 📢 PRESS RELEASES

11/3/2017

Superior Street Reconstruction Public Open House is November 16



# Communication During Construction

## *City*

- *Pre, during and post construction communications*
- *Press releases, weekly newsletter, Social media tools*
- *Print, TV and Radio*
- *Construction vendor will have a designated Communications staff*
- *Street level signage – skywalk signage*
- *Weekly construction meetings*

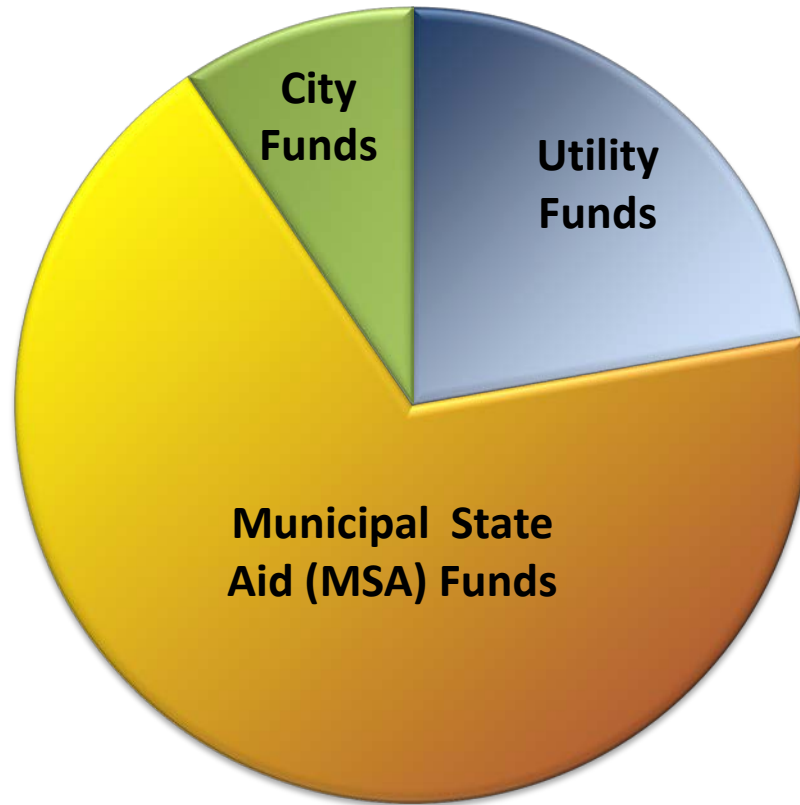
## *Greater Downtown Council*

- *Businesses*
- *“Get Downtown”*
- *Navigators*



# Property Owner Contribution

- *Street Assessment*



# Next Steps

- *Bidding: Jan/Feb*
- *Award: March*
- *Construction Start: Spring 2018 (April, Weather Permitting)*
- *Ongoing Coordination*



*Questions/Comments*

*Thank You!*