



CITY OF DULUTH
PURCHASING DIVISION
Room 120 City Hall
411 West First Street
Duluth, Minnesota 55802-1199
218/730-5340
purchasing@duluthmn.gov

Addendum 1
Bid 20-03AA
Pre-Insulated Pipe, Valves, Fittings & Accessories

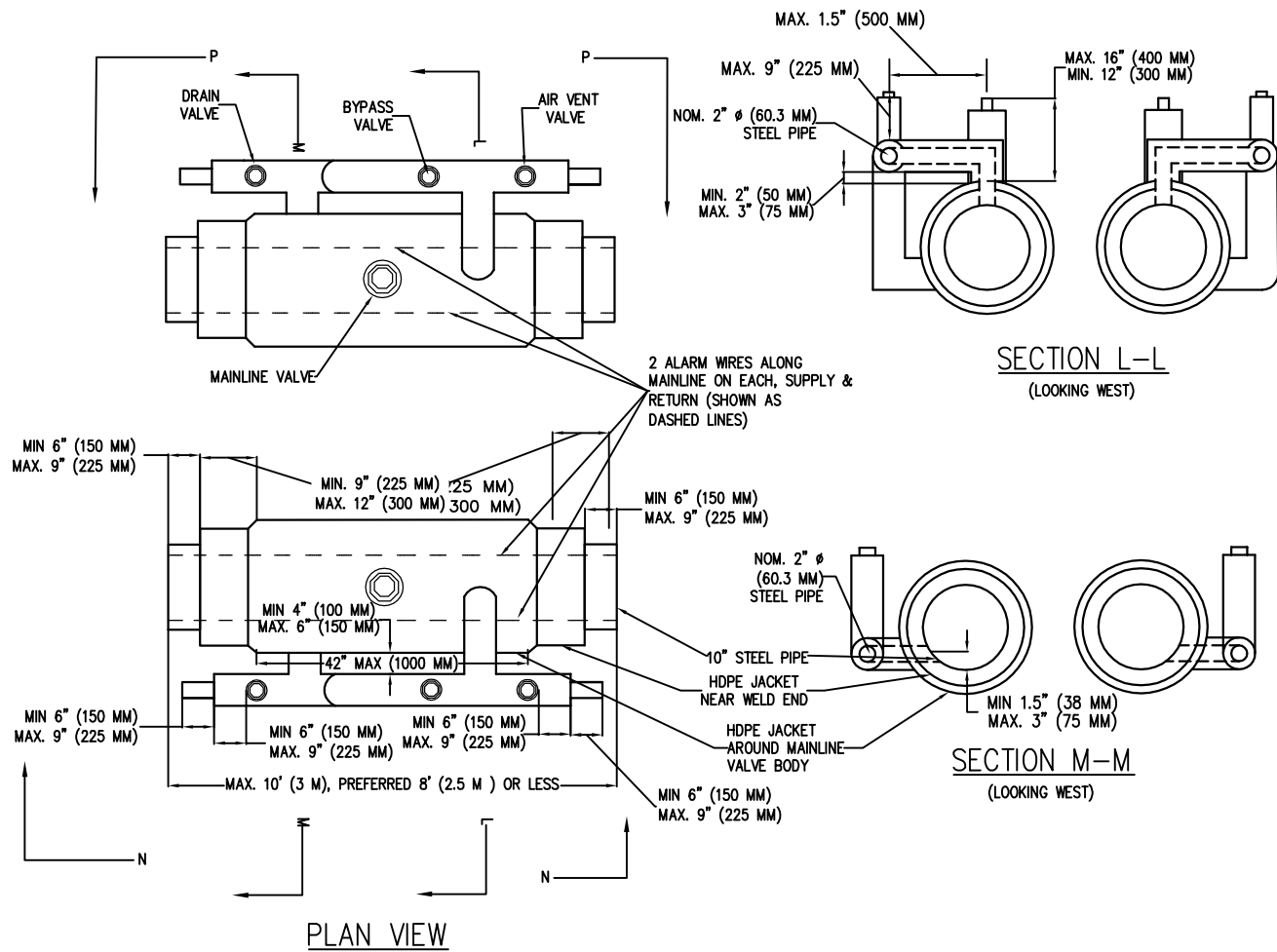
This addendum serves to notify all bidders of the following changes to the solicitation documents:

Drawings for the valve assemblies are attached.

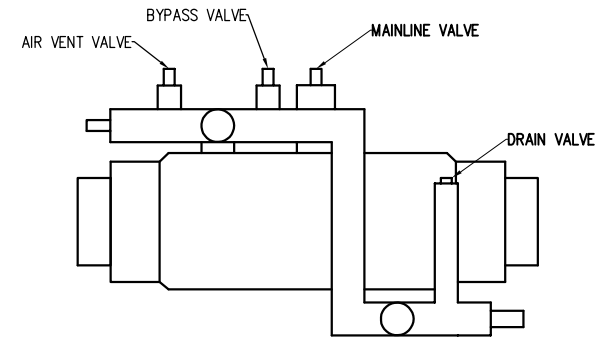
Please acknowledge receipt of this Addendum by checking the box in Bid Express.

Posted: **1/6/2020**

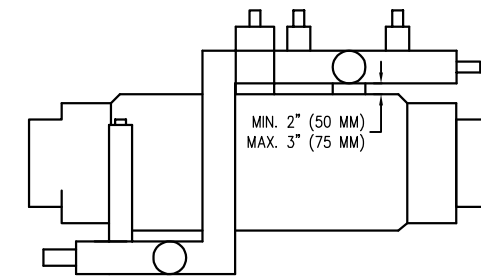
PLOT DATE: 12/18/2017 7:04:27 AM FILE: \\dcsen\001\Projects\001\Hwy Distribution\Superior Street\2 Design and Engineering\5 CAD Details.dwg



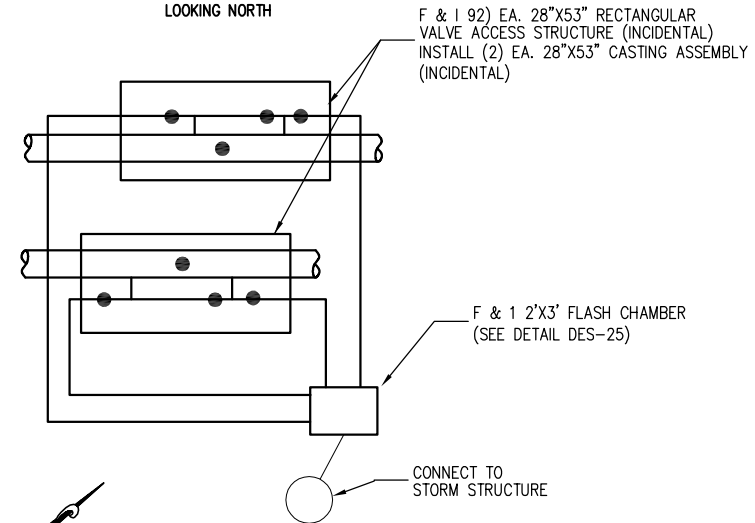
TYPE 1 VALVE ASSEMBLY
(MAINLINE VALVES 10", DN 250 W/ DRAIN,
BYPASS & AIR VENT VALVES 2", DN 50)
STA. 30+50



LONGITUDINAL
SECTION P-P
LOOKING SOUTH



LONGITUDINAL
SECTION N-N
LOOKING NORTH



PLAN VIEW

TYPE 1 VALVE ASSEMBLY
(MAINLINE VALVES 10", DN 250 W/ DRAIN
BYPASS & AIR VENT VALVES 2", DN 50)
STA. 30+50

VALVE ASSEMBLY DIMENSION TABLE			
MAINLINE VALVES WITH DRAIN, BYPASS & AIR VENT VALVES			
DESCRIPTION	NOMINAL SIZE	O.D. (mm)	THICKNESS (mm)
STEEL PIPE & VALVES (DRAIN, BYPASS & AIR VENT)	2" (DY 50)	60.3	3.2
HDPE JACKET NEAR WELD END	5.5" (DY 160)	160	3.0, EN-253 STD.
HDPE JACKET AROUND MAINLINE VALVE BODY	MANUF.	MANUF.	EN-253 STD.
STEEL PIPE & VALVES (MAINLINE)	10" (DY 250)	323.9	5.0
HDPE JACKET NEAR WELD END	18" (DY 450)	450	5.2, EN-253 STD.
HDPE JACKET AROUND MAINLINE VALVE BODY	MANUF.	MANUF.	EN-253 STD.

DES-14

LHB PROJECT NO. 150714 EGE PROJECT NO. EGE-0058

I HEREBY CERTIFY that this plan, specification or report was prepared by me or under my direct supervision and that I am a duly Licensed Professional Engineer under the laws of the State of Minnesota.

SEAN MCFARLING
PRINTED NAME

Sean McFarling
SIGNATURE

12/11/17
DATE
47062
LIC. NO.

SUPERIOR STREET
CITY PROJECT NO. 0923TR

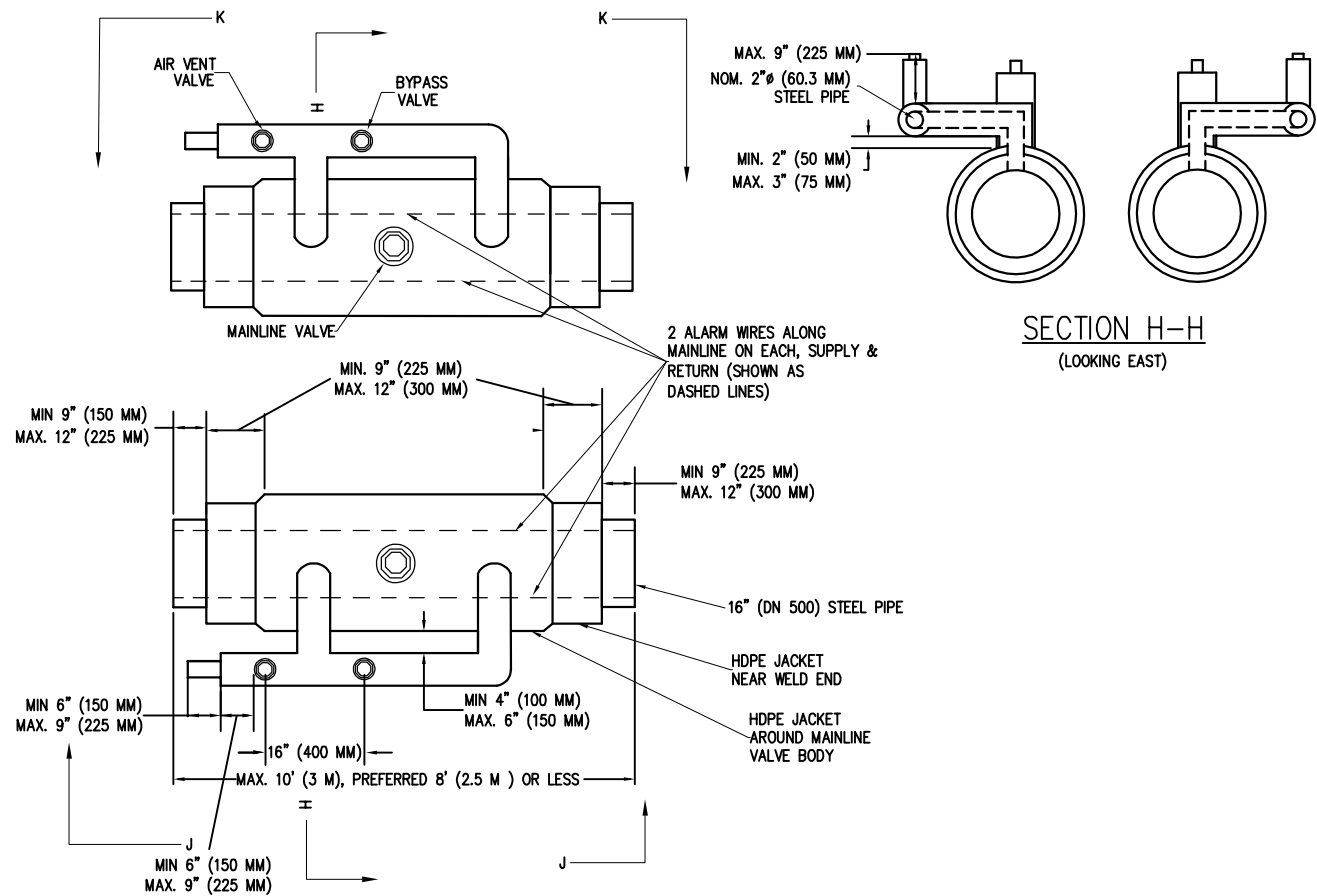
S.A.P. NO. 118-171-006

HOT WATER

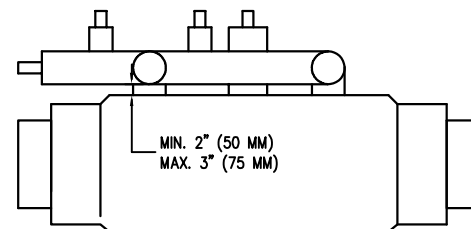
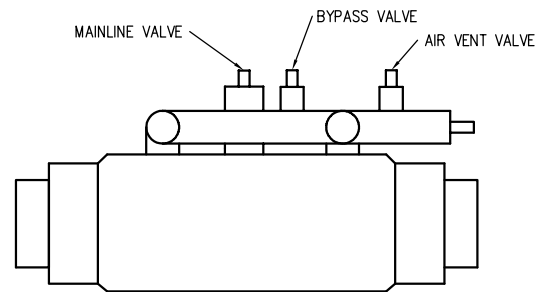
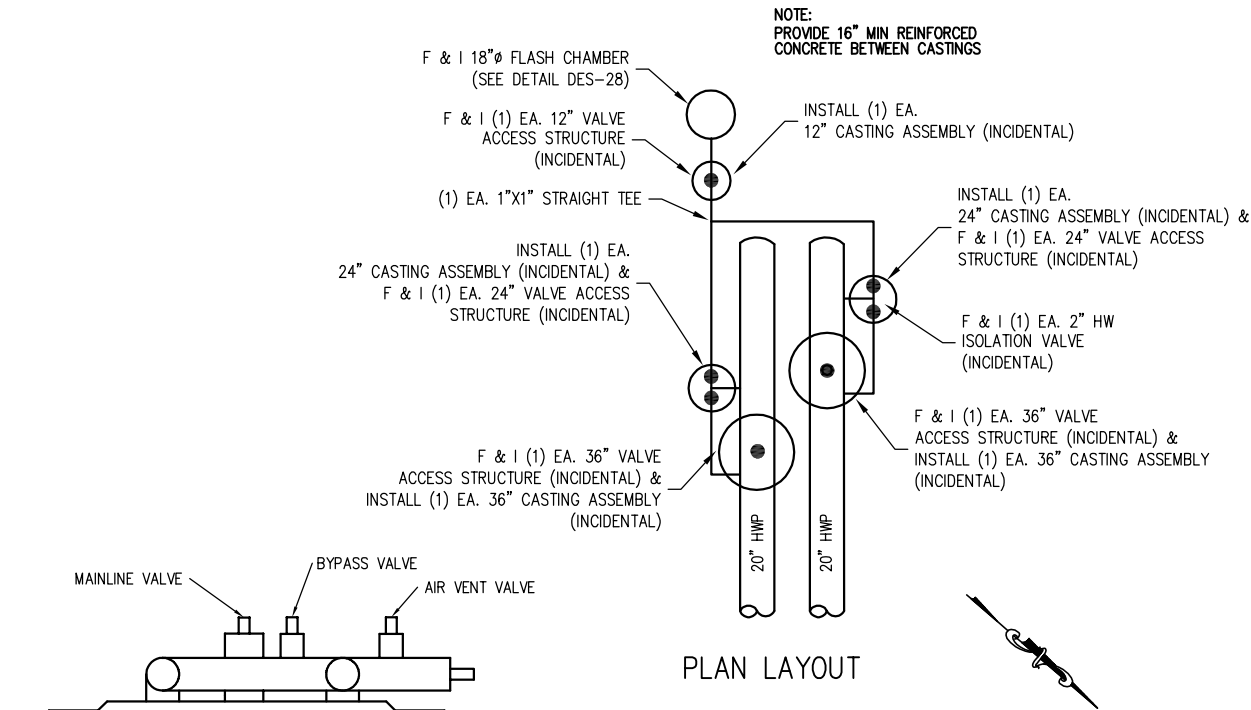
CONSTRUCTION DETAILS

SHEET NO. 515 OF 632 SHEETS

PLOT DATE: 12/18/2017 7:04:05 AM FILE: \\dcsen\001\Projects\001\H Distribution\Superior Street\2 Design and Engineering\5 CAD Details.dwg



TYPE 2 VALVE ASSEMBLY
(MAINLINE VALVES 20", DN 500 W/
BYPASS & AIR VENT VALVES 2", DN 50)
1ST AVE WEST STA. 2+35



TYPE 2 VALVE ASSEMBLY
(MAINLINE VALVES 20", DN 500 W/
BYPASS & AIR VENT VALVES 2", DN 50)
1ST AVE WEST STA. 2+35

VALVE ASSEMBLY DIMENSION TABLE			
MAINLINE VALVES WITH BYPASS & AIR VENT VALVES			
DESCRIPTION	NOMINAL SIZE	O.D. (mm)	THICKNESS (mm)
STEEL PIPE & VALVES (BYPASS & AIR VENT)	2" (DN 50)	60.3	3.2
HDPE JACKET NEAR WELD END	6" (DY 160)		3.0, EN-253 STD.
HDPE JACKET AROUND MAINLINE VALVE BODY	MANUF.	MANUF.	EN-253 STD.
STEEL PIPE & VALVES (MAINLINE)	20" (DN 400)	500	6.3
HDPE JACKET NEAR WELD END	28" (DY 710)	710	6.0, EN-253 STD.
HDPE JACKET AROUND MAINLINE VALVE BODY	MANUF.	MANUF.	EN-253 STD.

DES-15

LHB PROJECT NO. 150714 EGE PROJECT NO. EGE-0058

I HEREBY CERTIFY that this plan, specification or report was prepared by me or under my direct supervision and that I am a duly Licensed Professional Engineer under the laws of the State of Minnesota.

SEAN MCFARLING
PRINTED NAME

SIGNATURE

12/11/17
DATE
47062
LIC. NO.

SUPERIOR STREET

CITY PROJECT NO. 0923TR

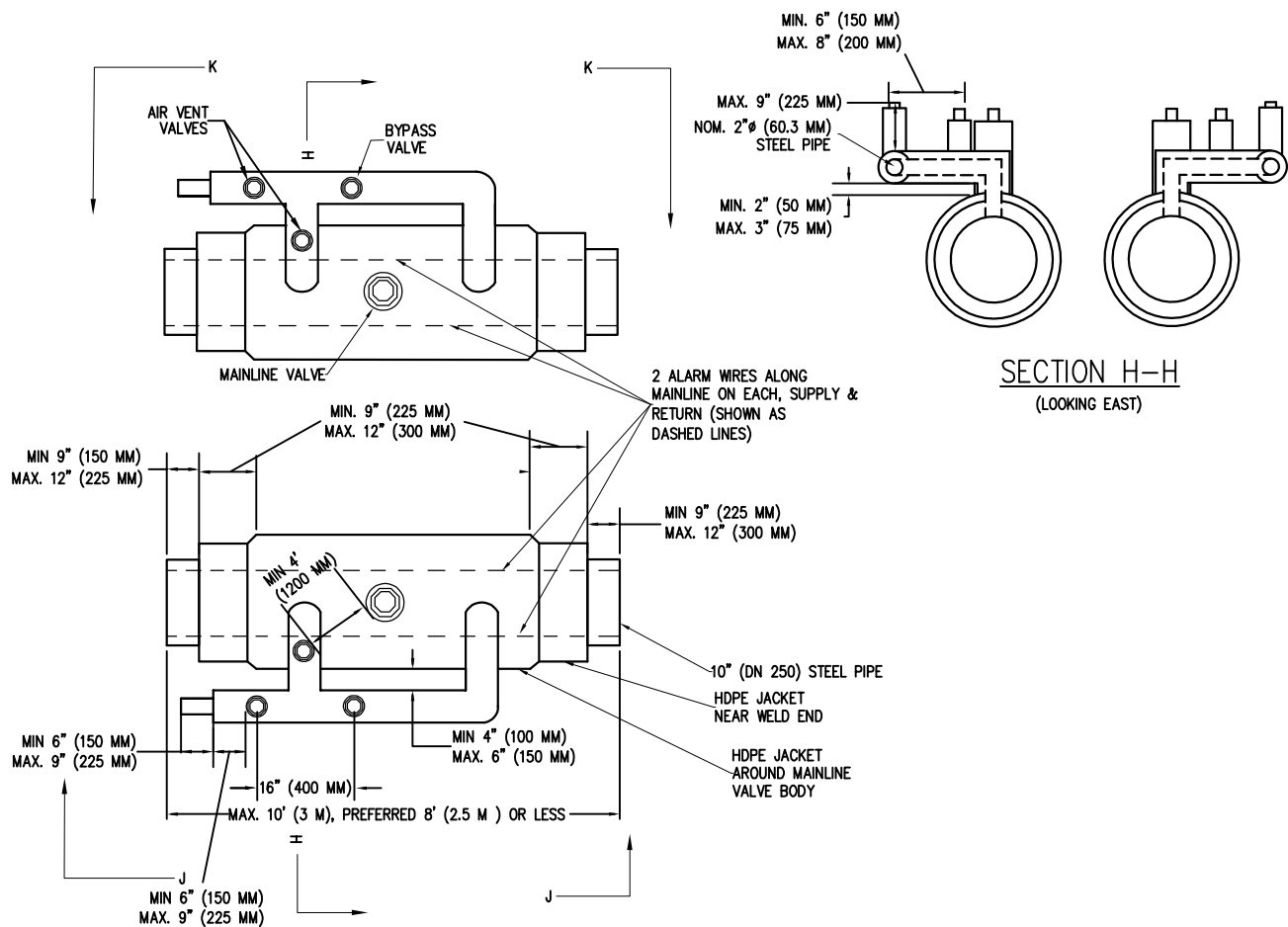
S.A.P. NO. 118-171-006

HOT WATER

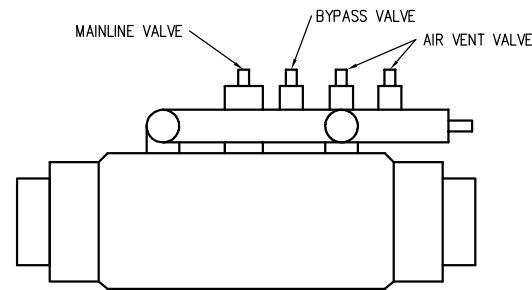
CONSTRUCTION DETAILS

SHEET NO. 516 OF 632 SHEETS

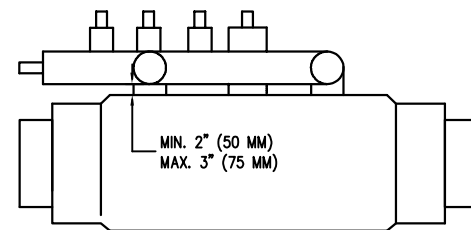
PLOT DATE: 12/18/2017 7:03:44 AM FILE: \\dcsen\01\Projects\01\Sub Distribution\Superior Street\2 Design and Engineering\5 CAD Details.dwg



TYPE 3 VALVE ASSEMBLY
(MAINLINE VALVES 10", DN 250 W/
BYPASS & AIR VENT VALVES 2", DN 50)
STA. 32+55

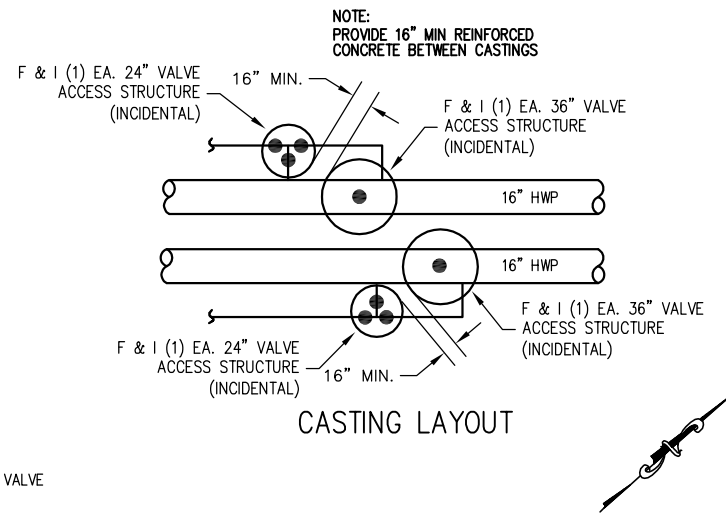


LONGITUDINAL
SECTION K-K
(LOOKING SOUTH)



LONGITUDINAL
SECTION J-J
(LOOKING NORTH)

TYPE 3 VALVE ASSEMBLY
(MAINLINE VALVES 10", DN 250 W/
BYPASS & AIR VENT VALVES 2", DN 50)
STA. 32+55



VALVE ASSEMBLY DIMENSION TABLE			
MAINLINE VALVES WITH BYPASS & AIR VENT VALVES			
DESCRIPTION	NOMINAL SIZE	O.D. (mm)	THICKNESS (mm)
STEEL PIPE & VALVES (BYPASS & AIR VENT)	2" (DN 50)	60.3	3.2
HDPE JACKET NEAR WELD END	6" (DY 160)	160	3.0, EN-253 STD.
HDPE JACKET AROUND MAINLINE VALVE BODY	MANUF.	MANUF.	EN-253 STD.
STEEL PIPE & VALVES (MAINLINE)	10" (DN 250)	273	50
HDPE JACKET NEAR WELD END	18" (DY 450)	450	5.2, EN-253 STD.
HDPE JACKET AROUND MAINLINE VALVE BODY	MANUF.	MANUF.	EN-253 STD.

DES-16

LHB PROJECT NO. 150714 EGE PROJECT NO. EGE-0058

I HEREBY CERTIFY that this plan, specification or report was prepared by me or under my direct supervision and that I am a duly Licensed Professional Engineer under the laws of the State of Minnesota.

SEAN MCFARLING
PRINTED NAME


SIGNATURE

12/11/17
DATE
47062
LIC. NO.

SUPERIOR STREET
CITY PROJECT NO. 0923TR

S.A.P. NO. 118-171-006

HOT WATER

CONSTRUCTION DETAILS

SHEET NO. 517 OF 632 SHEETS