

Transportation Expense Plan

7 Facts to Get You Rolling



A Transportation Expense Plan allows you to set aside pre-tax payroll contributions to two separate accounts to pay for qualified work-related parking or transit and vanpool expenses.

LIMITS

The 2019 monthly maximum tax-free limits for transportation expenses are \$265 for the Parking Expense Account (PKEA) and \$265 for the Bus pass/Vanpool Expense Account (BVEA). The IRS has not yet released limits for 2020 transportation expenses.

NO TRANSFERS

Balances in the Parking Account and the Transit Expense Account/Vanpool accounts cannot be transferred to the other.

ROLL-OVER

Excess balances at the end of a Plan year will be carried over to the following Plan year as long as you re-enroll with a minimum amount of \$50 prior to the start of the new year.

CHANGING YOUR ELECTION

You may change your election each month or elect to stop contributing to the Plan during the Plan year.

INELIGIBLE EXPENSES

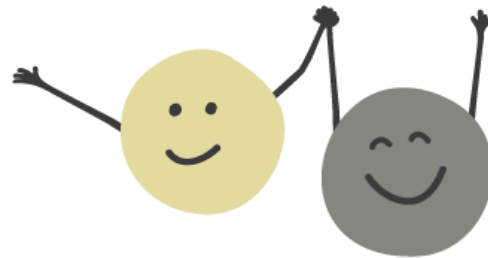
The following are ineligible expenses: commuter passes, commuting mileage, taxicab fares, fuel, your spouse's or dependent's expenses, your business or personal travel expenses.

CLAIMS REIMBURSEMENTS

Submit claims to 121 Benefits online, from our mobile app, by mail or fax within 180 days of when the expense was incurred or paid or the Plan year reimbursement filing deadline, whichever comes first.

VANPOOL QUALIFICATIONS

Vanpools are any vehicle that can seat 6 adults, excluding the driver. At least 80% of the van's mileage is expected to transport employees to and from work, and at least half of the vehicle is occupied for that purpose.



CONTACT US

Visit our website www.121benefits.com

Download the 121 Benefits Mobile App!

800.300.1672

730 2nd Ave South Suite 400
Minneapolis, MN 55402

