



CITY OF DULUTH
PURCHASING DIVISION
Room 100 City Hall
411 West First Street
Duluth, Minnesota 55802-1199
218/730-5340
purchasing@duluthmn.gov

Addendum 3
File # 18-0024

**Project: Pre-Insulated Pipe, Fittings, Valves and Accessories for Superior Street
Project – Phase 1 and 2**

This addendum serves to notify all bidders of the following changes to the solicitation documents:

1. The spec says that electro-fusion equipment is considered incidental, does that mean the cost of the equipment should be included in the unit price? How long will each phase of construction be?

Yes, electro-fusion equipment should be included in the unit cost of the joints. The phases will be approximately 6-8 months long, with Phase 1 occurring in 2019 and Phase 2 occurring in 2019.

2. Would electro-fusion joints be acceptable for all of the joint kit installation locations?

Yes, with the following caveats included in Spec Section 2.1.A.6.e
“Welded joint kits replacing split sleeve joint kits shall be adjustable in length to fit the tight space constraints of the project.”

3. Will the decision of the city be based on lowest cost solely?

Yes, as long as the vendor with the lowest price bid is from an approved manufacturer, or the lowest price bid is determined and has demonstrated adherence to the criteria of the specification.

4. Due to the addendums/changes to the item lists as well as clarifications still required, we are requesting a 1 week bid extension to the due date.

The City Council meeting schedule is such that an extension of the bid would require a delay in the award of the contract by at least a month. Due to the material lead times and necessary delivery dates, an extension is not feasible.

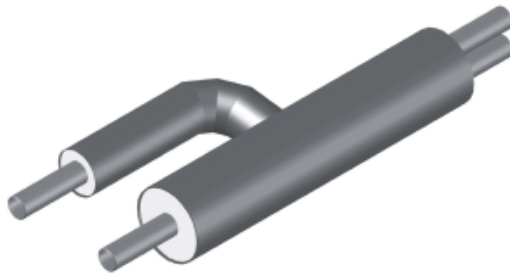
5. The pipe dimensions given for some sizes do not match exactly in mm to the EN253 pipe being offered. Example 1 1/4" pipe, the mm conversion is 101.6mm OD, but the

available OD's are either 90mm, 110mm, or 125mm (insulation thickness 1, 2 or 3). Most of the sizes fall within the insulation thickness 2 dimensions so should that be quoted across the board for all sizes?

The EN insulation series should match as closely as possible the designated imperial dimensions. The design was based on Series 2 materials except for the very large size materials not included in Phase 1 or 2 of the project.

6. Please clarify what exactly is required for items 225719 and 225720. We are not clear on this. Is this a Y-type transition piece from 2 single pipes to the twin pipe similar to what is pictured here?

Yes



7. Can we submit the 5% bid bond in a certified cheque from the manufacturer (If we are submitting the bid on their behalf?)

Yes.

Please acknowledge receipt of this Addendum by checking the appropriate box in the Bid Solicitation at www.bidexpress.com

Posted: November 28, 2017