



CITY OF DULUTH
PURCHASING DIVISION
Room 100 City Hall
411 West First Street
Duluth, Minnesota 55802-1199
218/730-5340
purchasing@duluthmn.gov

Addendum 2
File # 18-0024

Project: Pre-Insulated Pipe, Fittings, Valves and Accessories for Superior Street Project – Phase 1 and 2

This addendum serves to notify all bidders of the following changes to the solicitation documents:

1. The bid form in Bid Express Solicitation 18-0024 has been revised to remove the Service and Shunt Valves, and Castings items in Phase 2.
2. Pictures of the Termination and End Seal have been provided.

End fitting

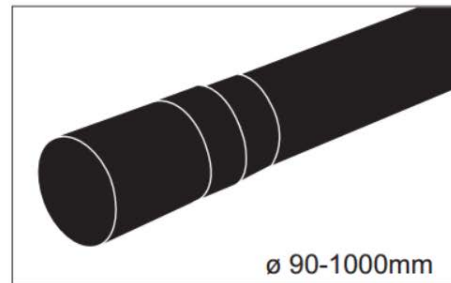
End fitting ø 90-1000 mm.

Component No. 5700.

The end fitting is used for protection of the pipe end in connection with termination in the ground.

Dimensions ø 90-630 mm are delivered with insulation shells.

Dimensions ø 710-1000 mm are delivered for foaming.



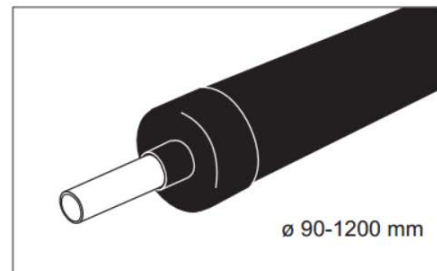
End-cap

End-cap ø 90-1200 mm outer casing.

Component No. 5600.

Split end-cap: component No. 5601

The end-cap is used for protection of insulation against water ingress



Please acknowledge receipt of this Addendum by checking the appropriate box in the Bid Solicitation at www.bidexpress.com

Posted: November 27, 2017

An Equal Opportunity Employer