



CITY OF DULUTH
PURCHASING DIVISION
Room 100 City Hall
411 West First Street
Duluth, Minnesota 55802-1199
218/730-5340 218/730-5922 FAX
purchasing@duluthmn.gov

Addendum # 1

File # 17-0405

FURNISH & INSTALL FENCING FOR BAYFRONT FESTIVAL PARK

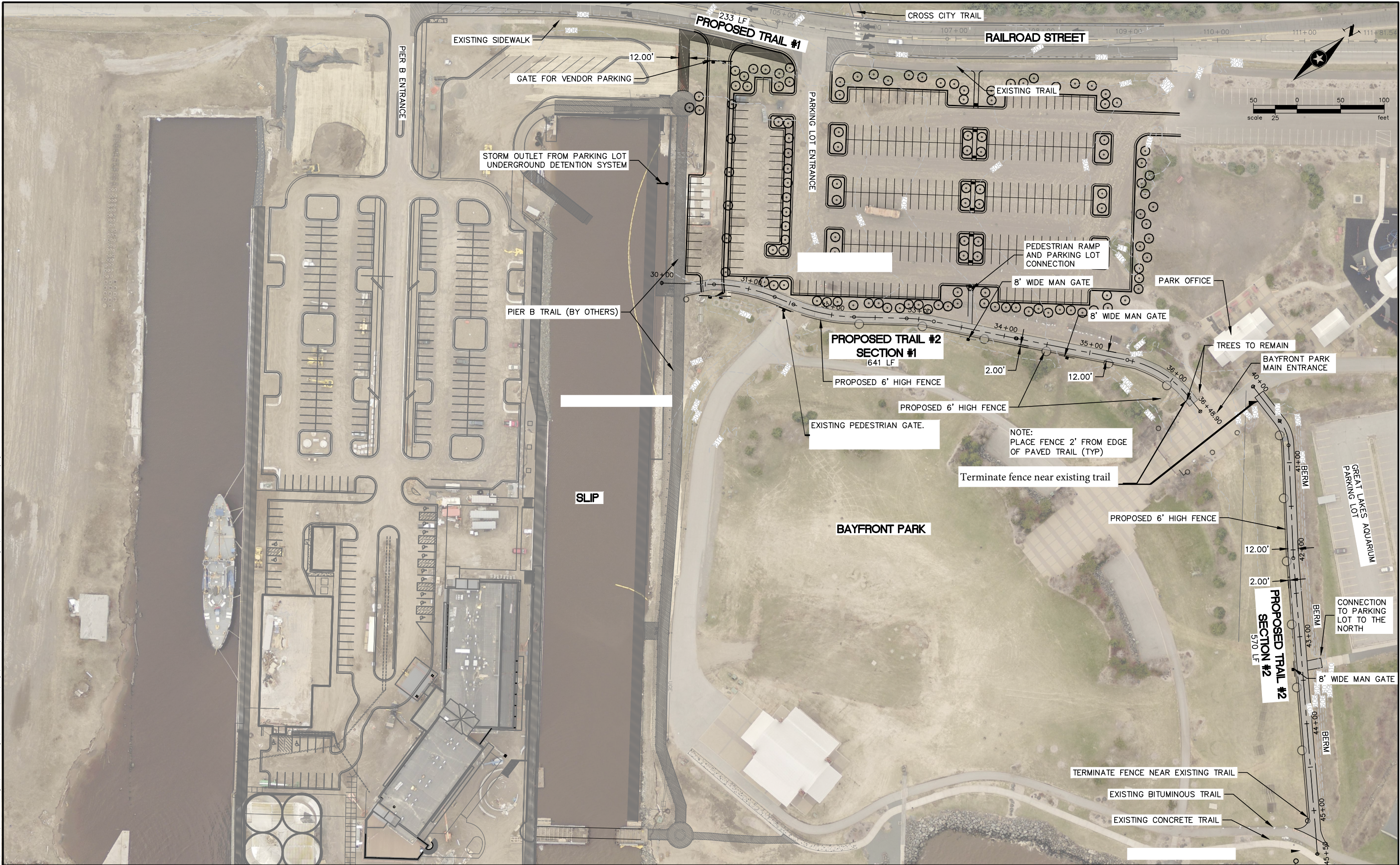
The following changes have been made to the plans and specifications for this project.

1. The portable fence has been removed from this project. Any portable fencing required will be procured under a separate purchase order.
2. Please remove the matching fence panels on the vehicle access gate in the western corner of the park from the project.
3. An updated plan is attached. Please note that an extra gate shown in the original plan has been removed.
4. There should be a 4" gap between the fence railings rather than 3".
5. The equipment should have rubber tire or track, not metal.
6. The contractor will be responsible for hauling away the spoils from the footings.
7. The total lineal footage of the fence will be about 1100 feet, with approximate distances of 112 feet from the Baywalk at the western corner to the 30-foot vehicle access gate, 96 feet from there to the first 8-foot gate to be added, 80 feet from the first 8-foot gate to the second 8-foot gate, 275 feet from there to the main entrance, 312 feet from the other side of the main entrance to the gate opposite the stairs to the aquarium (the exact distance isn't particularly important – what matters is that it's opposite the stairs), and 187 feet from there to where the path meets the Baywalk again in the eastern corner.

Please acknowledge receipt of this Addendum by initialing and dating Addendum #1 below the bid form on the invitation for bids.

Posted: June 8, 2017

S:\AE\DULUTH\134172\5-final-dsgn\51-drawings\10-Civil\cod\dwg\exhibits\DU131873_Trail Exhibit.dwg 4/14/2017 12:00 PM tyngsdol



BAYFRONT IMPROVEMENTS



PHONE: 218.279.3000
418 W SUPERIOR ST STE 200
DULUTH, MN 55802-1512
www.sehinc.com

DULUTH,
MINNESOTA

TRAILS EXHIBIT

FILE NO.
DULUT 134172

3
3