



CITY OF DULUTH
PURCHASING DIVISION
Room 100 City Hall
411 West First Street
Duluth, Minnesota 55802-1199
218/730-5340 218/730-5922 FAX
purchasing@duluthmn.gov

Addendum # 1
Gas Main Installation for Cirrus Expansion
Bid No: 2016-0475
Project No: 1551

This addendum serves to notify all bidders of the following changes to the solicitation documents:

Please acknowledge receipt of this Addendum by initialing and dating Addendum # below the bid form on the invitation for bids.

Posted Date: July 26, 2016

NOTICE TO BIDDERS

PROPOSAL PACKAGE

- 1) **REPLACE** United States / Department of Labor, General Decision MN 160105 Prevailing Wage Rate for **Heavy** Construction date [06/17/2016] with [07/22/2016]. New rates effective [07/22/2016] (see attached) supersede the rates [06/17/2016] that are listed in the original proposal package.
- 2) **ADD** Due to funding requirements of the Innovative Business Development Public Infrastructure Program. The Minnesota Department of Labor and Industry Prevailing Wages for State Funded Construction Projects Dated [04/25/2016] (see attached) apply to this project.

DRAWINGS

- 1) **REPLACE** "Sheet 8 of 26" of the plan set with the revised "Sheet 8 of 26" traffic control detour plan (see attached).

SPECIAL PROVISIONS

- 1) **ADD** the following provision to SP-19 (2505) PE GAS MAIN.

“H. 6-Inch Coiled MDPE Pipe

The Contractor may use 6-Inch coiled pipe for the installation of the gas main. If/when 6-Inch coiled pipe is used, the Contractor must use a pipe straightener that straightens and rounds 6-Inch IPS pipe.”

- 2) **ADD** the following sentence to the end of SP-20 MATERIALS AND WORK TO BE FURNISHED BY THE PUBLIC WORKS & UTILITIES DEPARTMENT

“C. The Department shall furnish and install all line markers called out in the plan set. The Contractor shall leave a minimum of 16 feet of excess tracer wire looped above ground at these locations to allow the department to install line markers.”

- 3) **REMOVE** the following sentence from SP-22 MEASUREMENT AND PAYMENT
“F. The installation of the line markers shall be considered incidental to the pipe.”

>

General Decision Number: MN160105 07/22/2016 MN105

Superseded General Decision Number: MN20150105

State: Minnesota

Construction Type: Heavy

County: St Louis County in Minnesota.

HEAVY CONSTRUCTION PROJECTS

Note: Under Executive Order (EO) 13658, an hourly minimum wage of \$10.15 for calendar year 2016 applies to all contracts subject to the Davis-Bacon Act for which the solicitation was issued on or after January 1, 2015. If this contract is covered by the EO, the contractor must pay all workers in any classification listed on this wage determination at least \$10.15 (or the applicable wage rate listed on this wage determination, if it is higher) for all hours spent performing on the contract in calendar year 2016. The EO minimum wage rate will be adjusted annually. Additional information on contractor requirements and worker protections under the EO is available at www.dol.gov/whd/govcontracts.

Modification Number	Publication Date
0	01/08/2016
1	03/04/2016
2	04/15/2016
3	06/17/2016
4	07/22/2016

BOIL0647-004 01/01/2013

	Rates	Fringes
BOILERMAKER.....	\$ 32.40	25.37

CARP0361-020 05/01/2015

ST LOUIS COUNTY (Southern 1/3 including Cotton, Floodwood, Fond Du Lac, and Proctor)

	Rates	Fringes
CARPENTER (Including Form Work).....	\$ 34.11	17.08

CARP0361-021 05/01/2015

ST LOUIS (Duluth)

	Rates	Fringes
CARPENTER (Including Form		

Work).....\$ 34.11 17.08

CARP0606-010 05/01/2015

ST LOUIS COUNTY (Northeast 2/3 including Cook, Cusson, Ely; and
Western part including Chisholm, Greaney, and Orr)

	Rates	Fringes
--	-------	---------

CARPENTER (Including Form Work).....	\$ 34.11	17.08
---	----------	-------

ELEC0242-012 05/31/2015

ST. LOUIS (South part bounded on the north by the north line of
Kelsey Township extended east & west)

	Rates	Fringes
--	-------	---------

ELECTRICIAN.....	\$ 33.90	24.47
------------------	----------	-------

ELEC0294-006 05/29/2016

ST. LOUIS (North part bounded on the south by the south line of
Ellsburg Township, extended east & west)

	Rates	Fringes
--	-------	---------

ELECTRICIAN.....	\$ 35.60	71.72%
------------------	----------	--------

ENGI0049-064 05/01/2016

	Rates	Fringes
--	-------	---------

OPERATOR: Power Equipment

Group 2.....	\$ 34.39	18.90
Group 3.....	\$ 33.84	18.90
Group 4.....	\$ 33.54	18.90
Group 5.....	\$ 30.50	18.90
Group 6.....	\$ 29.29	18.90

POWER EQUIPMENT OPERATOR CLASSIFICATIONS

GROUP 2: Crane with over 135' Boom, excluding jib; Dragline
& Hydraulic Backhoe with shovel-type controls, 3 cubic
yards and over; Grader/Blade finishing earthwork and
bituminous.

GROUP 3: Dragline & Hydraulic Backhoe with shovel-type
controls up to 3 cubic yards; Loader 5 cu yd and over;
Mechanic; Tandem Scraper; Truck Crane; Crawler Crane

GROUP 4: Bituminous Roller 8 tons & over; Crusher/Crushing
Plant; Drill Rig; Elevating Grader; Loader over 1 cu yd;
Grader; Pump; Scraper up; to 32 cu yd; Farm Tractor with
Backhoe attachment; Skid Steer Loader over 1 cu yd with
Backhoe attachment; Bulldozer over 50 hp.

GROUP 5: Bituminous Roller under 8 tons; Bituminous Rubber Tire Roller; Loader up to 1 cu yd; Bulldozer 50 hp or less.

GROUP 6: Oiler; Self-Propelled Vibrating Packer 35 hp and over.

CRANE OVER 135' BOOM, EXCLUDING JIB - \$.25 PREMIUM;
CRANE OVER 200' BOOM, EXCLUDING JIB - \$.50 PREMIUM

UNDERGROUND WORK:
UNNELS, SHAFTS, ETC. - \$.25 PREMIUM
UNDER AIR PRESSURE - \$.50 PREMIUM

HAZARDOUS WASTE PROJECTS (PPE Required):
LEVEL A - \$1.25 PREMIUM
LEVEL B - \$.90 PREMIUM
LEVEL C - \$.60 PREMIUM

IRON0512-028 05/01/2015

	Rates	Fringes
IRONWORKER, STRUCTURAL AND REINFORCING.....	\$ 31.04	23.45

LABO1091-006 05/01/2016

ST LOUIS (South of T. 55 N)

	Rates	Fringes
LABORERS		
(1) Common or General.....	\$ 29.13	17.12
(2) Mason Tender		
Cement/Concrete.....	\$ 29.33	17.12
(6) Pipe Layer.....	\$ 31.63	17.12

LABO1091-007 05/01/2016

SOUTHERN ST. LOUIS COUNTY

	Rates	Fringes
LABORER		
Common or General (Natural Gas Pipeline only).....	\$ 29.13	17.12

LABO1097-002 05/01/2014

NORTHERN ST. LOUIS COUNTY

	Rates	Fringes
LABORER		
Common or General (Natural Gas Pipeline only).....	\$ 25.02	18.16

LABO1097-005 05/01/2014

ST LOUIS (North of T. 55 N)

	Rates	Fringes
LABORERS		
(1) Common or General.....	\$ 25.02	18.16
(2) Mason Tender		
Cement/Concrete.....	\$ 25.22	18.16
(6) Pipe Layer.....	\$ 27.52	18.16

* PLAS0633-036 05/01/2016

ST. LOUIS COUNTY (North of T 55N)

	Rates	Fringes
CEMENT MASON/CONCRETE FINISHER...	\$ 33.95	17.63

* PLAS0633-039 05/01/2016

ST. LOUIS COUNTY (South of T 55N)

	Rates	Fringes
CEMENT MASON/CONCRETE FINISHER...	\$ 33.95	17.63

TEAM0160-018 05/01/2015

	Rates	Fringes
TRUCK DRIVER (DUMP)		
(1) Articulated Dump Truck..	\$ 28.70	15.20
(2) 3 Axles/4 Axles; 5		
Axles receive \$0.30		
additional per hour.....	\$ 28.15	15.20
(3) Tandem Axles; & Single		
Axles.....	\$ 28.05	15.20

SUMN2009-072 09/28/2009

	Rates	Fringes
LABORER: Landscape.....	\$ 12.88	4.61

WELDERS - Receive rate prescribed for craft performing operation to which welding is incidental.

=====

Unlisted classifications needed for work not included within the scope of the classifications listed may be added after award only as provided in the labor standards contract clauses (29CFR 5.5 (a) (1) (ii)).

The body of each wage determination lists the classification and wage rates that have been found to be prevailing for the cited type(s) of construction in the area covered by the wage determination. The classifications are listed in alphabetical order of "identifiers" that indicate whether the particular rate is a union rate (current union negotiated rate for local), a survey rate (weighted average rate) or a union average rate (weighted union average rate).

Union Rate Identifiers

A four letter classification abbreviation identifier enclosed in dotted lines beginning with characters other than "SU" or "UAVG" denotes that the union classification and rate were prevailing for that classification in the survey. Example: PLUM0198-005 07/01/2014. PLUM is an abbreviation identifier of the union which prevailed in the survey for this classification, which in this example would be Plumbers. 0198 indicates the local union number or district council number where applicable, i.e., Plumbers Local 0198. The next number, 005 in the example, is an internal number used in processing the wage determination. 07/01/2014 is the effective date of the most current negotiated rate, which in this example is July 1, 2014.

Union prevailing wage rates are updated to reflect all rate changes in the collective bargaining agreement (CBA) governing this classification and rate.

Survey Rate Identifiers

Classifications listed under the "SU" identifier indicate that no one rate prevailed for this classification in the survey and the published rate is derived by computing a weighted average rate based on all the rates reported in the survey for that classification. As this weighted average rate includes all rates reported in the survey, it may include both union and non-union rates. Example: SULA2012-007 5/13/2014. SU indicates the rates are survey rates based on a weighted average calculation of rates and are not majority rates. LA indicates the State of Louisiana. 2012 is the year of survey on which these classifications and rates are based. The next number, 007 in the example, is an internal number used in producing the wage determination. 5/13/2014 indicates the survey completion date for the classifications and rates under that identifier.

Survey wage rates are not updated and remain in effect until a new survey is conducted.

Union Average Rate Identifiers

Classification(s) listed under the UAVG identifier indicate that no single majority rate prevailed for those classifications; however, 100% of the data reported for the classifications was union data. EXAMPLE: UAVG-OH-0010 08/29/2014. UAVG indicates that the rate is a weighted union average rate. OH indicates the state. The next number, 0010 in the example, is an internal number used in producing the wage determination. 08/29/2014 indicates the survey completion date

for the classifications and rates under that identifier.

A UAVG rate will be updated once a year, usually in January of each year, to reflect a weighted average of the current negotiated/CBA rate of the union locals from which the rate is based.

WAGE DETERMINATION APPEALS PROCESS

1.) Has there been an initial decision in the matter? This can be:

- * an existing published wage determination
- * a survey underlying a wage determination
- * a Wage and Hour Division letter setting forth a position on a wage determination matter
- * a conformance (additional classification and rate) ruling

On survey related matters, initial contact, including requests for summaries of surveys, should be with the Wage and Hour Regional Office for the area in which the survey was conducted because those Regional Offices have responsibility for the Davis-Bacon survey program. If the response from this initial contact is not satisfactory, then the process described in 2.) and 3.) should be followed.

With regard to any other matter not yet ripe for the formal process described here, initial contact should be with the Branch of Construction Wage Determinations. Write to:

Branch of Construction Wage Determinations
Wage and Hour Division
U.S. Department of Labor
200 Constitution Avenue, N.W.
Washington, DC 20210

2.) If the answer to the question in 1.) is yes, then an interested party (those affected by the action) can request review and reconsideration from the Wage and Hour Administrator (See 29 CFR Part 1.8 and 29 CFR Part 7). Write to:

Wage and Hour Administrator
U.S. Department of Labor
200 Constitution Avenue, N.W.
Washington, DC 20210

The request should be accompanied by a full statement of the interested party's position and by any information (wage payment data, project description, area practice material, etc.) that the requestor considers relevant to the issue.

3.) If the decision of the Administrator is not favorable, an interested party may appeal directly to the Administrative Review Board (formerly the Wage Appeals Board). Write to:

Administrative Review Board

U.S. Department of Labor
200 Constitution Avenue, N.W.
Washington, DC 20210

4.) All decisions by the Administrative Review Board are final.

=====

END OF GENERAL DECISION

**MINNESOTA DEPARTMENT OF LABOR AND INDUSTRY PREVAILING WAGES FOR STATE
FUNDED CONSTRUCTION PROJECTS**



THIS NOTICE MUST BE POSTED ON THE JOBSITE IN A CONSPICUOUS PLACE

Construction Type: Highway and Heavy

Region Number: 01

Counties within region:

- CARLTON-09
- COOK-16
- ITASCA-31
- KOOCHICHING-36
- LAKE-38
- PINE-58
- ST. LOUIS-69

Effective: 2015-10-12 Revised: 2016-04-25

This project is covered by Minnesota prevailing wage statutes. Wage rates listed below are the minimum hourly rates to be paid on this project.

All hours worked in excess of eight (8) hours per day or forty (40) hours per week shall be paid at a rate of one and one half (1 1/2) times the basic hourly rate.

Violations should be reported to:

Department of Transportation
Office of Construction
Transportation Building MS650
John Ireland Blvd
St. Paul, MN 55155
(651) 366-4209

Refer questions concerning the prevailing wage rates to:

Department of Labor and Industry
Prevailing Wage Section
443 Lafayette Road N
St Paul, MN 55155
(651) 284-5091
DLI.PrevWage@state.mn.us

LABOR CODE AND CLASS

		EFFECT DATE	BASIC RATE	FRINGE RATE	TOTAL RATE
LABORERS (101 - 112) (SPECIAL CRAFTS 701 - 730)					
101	LABORER, COMMON (GENERAL LABOR WORK)	2015-10-12	28.11	16.57	44.68
		2016-05-01	29.23	17.02	46.25
102	LABORER, SKILLED (ASSISTING SKILLED CRAFT JOURNEYMAN)	2015-10-12	28.11	16.57	44.68
		2016-05-01	29.23	17.02	46.25
103	LABORER, LANDSCAPING (GARDENER, SOD LAYER AND NURSERY OPERATOR)	2015-10-12	27.64	12.64	40.28
104	FLAG PERSON	2015-10-12	28.11	16.57	44.68
		2016-05-01	29.23	17.02	46.25
105	WATCH PERSON	2015-10-12	24.56	16.32	40.88
		2016-05-01	25.68	16.77	42.45
106	BLASTER	2015-10-12	28.89	15.33	44.22
107	PIPELAYER (WATER, SEWER AND GAS)	2015-10-12	30.61	16.57	47.18
		2016-05-01	31.73	17.02	48.75
108	TUNNEL MINER	2015-10-12	28.81	16.57	45.38
		2016-05-01	29.93	17.02	46.95
109	UNDERGROUND AND OPEN DITCH LABORER (EIGHT FEET BELOW STARTING GRADE LEVEL)	2015-10-12	28.81	16.57	45.38
		2016-05-01	29.93	17.02	46.95
110	SURVEY FIELD TECHNICIAN (OPERATE TOTAL STATION, GPS RECEIVER, LEVEL, ROD OR RANGE POLES, STEEL TAPE MEASUREMENT; MARK AND DRIVE STAKES; HAND OR POWER DIGGING FOR AND IDENTIFICATION OF MARKERS OR MONUMENTS;	2015-10-12	28.11	16.57	44.68

PERFORM AND CHECK CALCULATIONS; REVIEW AND UNDERSTAND CONSTRUCTION PLANS AND LAND SURVEY MATERIALS). THIS CLASSIFICATION DOES NOT APPLY TO THE WORK PERFORMED ON A PREVAILING WAGE PROJECT BY A LAND SURVEYOR WHO IS LICENSED PURSUANT TO MINNESOTA STATUTES, SECTIONS 326.02 TO 326.15.

	2016-05-01	29.23	17.02	46.25
111 TRAFFIC CONTROL PERSON (TEMPORARY SIGNAGE)	2015-10-12	28.11	16.57	44.68
	2016-05-01	29.23	17.02	46.25
112 QUALITY CONTROL TESTER (FIELD AND COVERED OFF-SITE FACILITIES; TESTING OF AGGREGATE, ASPHALT, AND CONCRETE MATERIALS); LIMITED TO MN DOT HIGHWAY AND HEAVY CONSTRUCTION PROJECTS WHERE THE MN DOT HAS RETAINED QUALITY ASSURANCE PROFESSIONALS TO REVIEW AND INTERPRET THE RESULTS OF QUALITY CONTROL TESTERS. SERVICES PROVIDED BY THE CONTRACTOR.	2015-10-12	21.40	13.51	34.91

SPECIAL EQUIPMENT (201 - 204)

201 ARTICULATED HAULER	2015-10-12	32.93	17.90	50.83
	2016-05-01	33.54	18.90	52.44
202 BOOM TRUCK	2015-10-12	32.93	17.90	50.83
	2016-05-01	33.54	18.90	52.44
203 LANDSCAPING EQUIPMENT, INCLUDES HYDRO SEEDER OR MULCHER, SOD ROLLER, FARM TRACTOR WITH ATTACHMENT SPECIFICALLY SEEDING, SODDING, OR PLANT, AND TWO-FRAMED FORKLIFT (EXCLUDING FRONT, POSIT-TRACK, AND SKID STEER LOADERS), NO EARTHWORK OR GRADING FOR ELEVATIONS	2015-10-12	20.01	13.54	33.55
	2016-05-01	21.17	13.99	35.16
204 OFF-ROAD TRUCK	2015-10-12	31.37	16.70	48.07
205	2015-10-12	28.36	16.36	44.72

PAVEMENT MARKING OR MARKING REMOVAL
EQUIPMENT (ONE OR TWO PERSON OPERATORS);
SELF-PROPELLED TRUCK OR TRAILER MOUNTED
UNITS.

HIGHWAY/HEAVY POWER EQUIPMENT OPERATOR

GROUP 2	2015-10-12	33.78	17.90	51.68
	2016-05-01	34.39	18.90	53.29
302	HELICOPTER PILOT (HIGHWAY AND HEAVY ONLY)			
303	CONCRETE PUMP (HIGHWAY AND HEAVY ONLY)			
304	ALL CRANES WITH OVER 135-FOOT BOOM, EXCLUDING JIB (HIGHWAY AND HEAVY ONLY)			
305	DRAGLINE, CRAWLER, HYDRAULIC BACKHOE (TRACK OR WHEEL MOUNTED) AND/OR OTHER SIMILAR EQUIPMENT WITH SHOVEL-TYPE CONTROLS THREE CUBIC YARDS AND OVER MANUFACTURER.S RATED CAPACITY INCLUDING ALL ATTACHMENTS. (HIGHWAY AND HEAVY ONLY)			
306	GRADER OR MOTOR PATROL			
307	PILE DRIVING (HIGHWAY AND HEAVY ONLY)			
308	TUGBOAT 100 H.P. AND OVER WHEN LICENSE REQUIRED (HIGHWAY AND HEAVY ONLY)			
GROUP 3	2015-10-12	33.23	17.90	51.13
	2016-05-01	33.84	18.90	52.74
309	ASPHALT BITUMINOUS STABILIZER PLANT			
310	CABLEWAY			
311	CONCRETE MIXER, STATIONARY PLANT (HIGHWAY AND HEAVY ONLY)			
312	DERRICK (GUY OR STIFFLEG)(POWER)(SKIDS OR STATIONARY) (HIGHWAY AND HEAVY ONLY)			
313	DRAGLINE, CRAWLER, HYDRAULIC BACKHOE (TRACK OR WHEEL MOUNTED) AND/OR SIMILAR EQUIPMENT WITH SHOVEL-TYPE CONTROLS, UP TO THREE CUBIC YARDS MANUFACTURER.S RATED CAPACITY INCLUDING ALL ATTACHMENTS (HIGHWAY AND HEAVY ONLY)			
314	DREDGE OR ENGINEERS, DREDGE (POWER) AND ENGINEER			
315	FRONT END LOADER, FIVE CUBIC YARDS AND OVER INCLUDING ATTACHMENTS. (HIGHWAY AND HEAVY ONLY)			
316	LOCOMOTIVE CRANE OPERATOR			
317	MIXER (PAVING) CONCRETE PAVING, ROAD MOLE, INCLUDING MUCKING OPERATIONS, CONWAY OR SIMILAR TYPE			
318	MECHANIC . WELDER ON POWER EQUIPMENT (HIGHWAY AND HEAVY ONLY)			

- 319 TRACTOR . BOOM TYPE (HIGHWAY AND HEAVY ONLY)
- 320 TANDEM SCRAPER
- 321 TRUCK CRANE . CRAWLER CRANE (HIGHWAY AND HEAVY ONLY)
- 322 TUGBOAT 100 H.P AND OVER (HIGHWAY AND HEAVY ONLY)

GROUP 4	2015-10-12	32.93	17.90	50.83
	2016-05-01	33.54	18.90	52.44

- 323 AIR TRACK ROCK DRILL
- 324 AUTOMATIC ROAD MACHINE (CMI OR SIMILAR) (HIGHWAY AND HEAVY ONLY)
- 325 BACKFILLER OPERATOR
- 326 CONCRETE BATCH PLANT OPERATOR (HIGHWAY AND HEAVY ONLY)
- 327 BITUMINOUS ROLLERS, RUBBER TIRED OR STEEL DRUMMED (EIGHT TONS AND OVER)
- 328 BITUMINOUS SPREADER AND FINISHING MACHINES (POWER), INCLUDING PAVERS, MACRO SURFACING AND MICRO SURFACING, OR SIMILAR TYPES (OPERATOR AND SCREED PERSON)
- 329 BROKK OR R.T.C. REMOTE CONTROL OR SIMILAR TYPE WITH ALL ATTACHMENTS
- 330 CAT CHALLENGER TRACTORS OR SIMILAR TYPES PULLING ROCK WAGONS, BULLDOZERS AND SCRAPERS
- 331 CHIP HARVESTER AND TREE CUTTER
- 332 CONCRETE DISTRIBUTOR AND SPREADER FINISHING MACHINE, LONGITUDINAL FLOAT, JOINT MACHINE, AND SPRAY MACHINE
- 333 CONCRETE MIXER ON JOBSITE (HIGHWAY AND HEAVY ONLY)
- 334 CONCRETE MOBIL (HIGHWAY AND HEAVY ONLY)
- 335 CRUSHING PLANT (GRAVEL AND STONE) OR GRAVEL WASHING, CRUSHING AND SCREENING PLANT
- 336 CURB MACHINE
- 337 DIRECTIONAL BORING MACHINE
- 338 DOPE MACHINE (PIPELINE)
- 339 DRILL RIGS, HEAVY ROTARY OR CHURN OR CABLE DRILL (HIGHWAY AND HEAVY ONLY)
- 340 DUAL TRACTOR
- 341 ELEVATING GRADER
- 342 FORK LIFT OR STRADDLE CARRIER (HIGHWAY AND HEAVY ONLY)
- 343 FORK LIFT OR LUMBER STACKER (HIGHWAY AND HEAVY ONLY)
- 344 FRONT END, SKID STEER OVER 1 TO 5 C YD
- 345 GPS REMOTE OPERATING OF EQUIPMENT
- 346 HOIST ENGINEER (POWER) (HIGHWAY AND HEAVY ONLY)
- 347 HYDRAULIC TREE PLANTER
- 348 LAUNCHER PERSON (TANKER PERSON OR PILOT LICENSE)

- 349 LOCOMOTIVE (HIGHWAY AND HEAVY ONLY)
- 350 MILLING, GRINDING, PLANING, FINE GRADE, OR TRIMMER MACHINE
- 351 MULTIPLE MACHINES, SUCH AS AIR COMPRESSORS, WELDING MACHINES, GENERATORS, PUMPS (HIGHWAY AND HEAVY ONLY)
- 352 PAVEMENT BREAKER OR TAMPING MACHINE (POWER DRIVEN) MIGHTY MITE OR SIMILAR TYPE
- 353 PICKUP SWEEPER, ONE CUBIC YARD AND OVER HOPPER CAPACITY(HIGHWAY AND HEAVY ONLY)
- 354 PIPELINE WRAPPING, CLEANING OR BENDING MACHINE
- 355 POWER PLANT ENGINEER, 100 KWH AND OVER (HIGHWAY AND HEAVY ONLY)
- 356 POWER ACTUATED HORIZONTAL BORING MACHINE, OVER SIX INCHES
- 357 PUGMILL
- 358 PUMPCRETE (HIGHWAY AND HEAVY ONLY)
- 359 RUBBER-TIRED FARM TRACTOR WITH BACKHOE INCLUDING ATTACHMENTS (HIGHWAY AND HEAVY ONLY)
- 360 SCRAPER
- 361 SELF-PROPELLED SOIL STABILIZER
- 362 SLIP FORM (POWER DRIVEN) (PAVING)
- 363 TIE TAMPER AND BALLAST MACHINE
- 364 TRACTOR, BULLDOZER (HIGHWAY AND HEAVY ONLY)
- 365 TRACTOR, WHEEL TYPE, OVER 50 H.P. WITH PTO UNRELATED TO LANDSCAPING (HIGHWAY AND HEAVY ONLY)
- 366 TRENCHING MACHINE (SEWER, WATER, GAS) EXCLUDES WALK BEHIND TRENCHER (HIGHWAY AND HEAVY ONLY)
- 367 TUB GRINDER, MORBARK, OR SIMILAR TYPE
- 368 WELL POINT DISMANTLING OR INSTALLATION (HIGHWAY AND HEAVY ONLY)

GROUP 5	2015-10-12	29.89	17.90	47.79
	2016-05-01	30.50	18.90	49.40

- 369 AIR COMPRESSOR, 600 CFM OR OVER (HIGHWAY AND HEAVY ONLY)
- 370 BITUMINOUS ROLLER (UNDER EIGHT TONS)
- 371 CONCRETE SAW (MULTIPLE BLADE) (POWER OPERATED)
- 372 FORM TRENCH DIGGER (POWER)
- 373 FRONT END, SKID STEER UP TO 1C YD
- 374 GUNITE GUNALL (HIGHWAY AND HEAVY ONLY)
- 375 HYDRAULIC LOG SPLITTER
- 376 LOADER (BARBER GREENE OR SIMILAR TYPE)
- 377 POST HOLE DRIVING MACHINE/POST HOLE AUGER

378 POWER ACTUATED AUGER AND BORING MACHINE

379 POWER ACTUATED JACK

380 PUMP (HIGHWAY AND HEAVY ONLY)

381 SELF-PROPELLED CHIP SPREADER (FLAHERTY OR SIMILAR)

382 SHEEP FOOT COMPACTOR WITH BLADE . 200 H.P. AND OVER

383 SHOULDERING MACHINE (POWER) APSCO OR SIMILAR TYPE INCLUDING SELF-PROPELLED
SAND AND CHIP SPREADER

384 STUMP CHIPPER AND TREE CHIPPER

385 TREE FARMER (MACHINE)

GROUP 6	2015-10-12	28.68	17.90	46.58
	2016-05-01	29.29	18.90	48.19

387 CAT, CHALLENGER, OR SIMILAR TYPE OF TRACTORS, WHEN PULLING DISK OR ROLLER

388 CONVEYOR (HIGHWAY AND HEAVY ONLY)

389 DREDGE DECK HAND

390 FIRE PERSON OR TANK CAR HEATER (HIGHWAY AND HEAVY ONLY)

391 GRAVEL SCREENING PLANT (PORTABLE NOT CRUSHING OR WASHING)

392 GREASER (TRACTOR) (HIGHWAY AND HEAVY ONLY)

393 LEVER PERSON

394 OILER (POWER SHOVEL, CRANE, TRUCK CRANE, DRAGLINE, CRUSHERS, AND MILLING
MACHINES, OR OTHER SIMILAR HEAVY EQUIPMENT) (HIGHWAY AND HEAVY ONLY)

395 POWER SWEEPER

396 SHEEP FOOT ROLLER AND ROLLERS ON GRAVEL COMPACTION, INCLUDING VIBRATING
ROLLERS

397 TRACTOR, WHEEL TYPE, OVER 50 H.P., UNRELATED TO LANDSCAPING

TRUCK DRIVERS

GROUP 1	2015-10-12	28.70	15.20	43.90
	2016-05-01	30.15	15.20	45.35

601 MECHANIC . WELDER

602 TRACTOR TRAILER DRIVER

603 TRUCK DRIVER (HAULING MACHINERY INCLUDING OPERATION OF HAND AND POWER
OPERATED WINCHES)

GROUP 2	2015-10-12	26.30	14.40	40.70
----------------	------------	-------	-------	-------

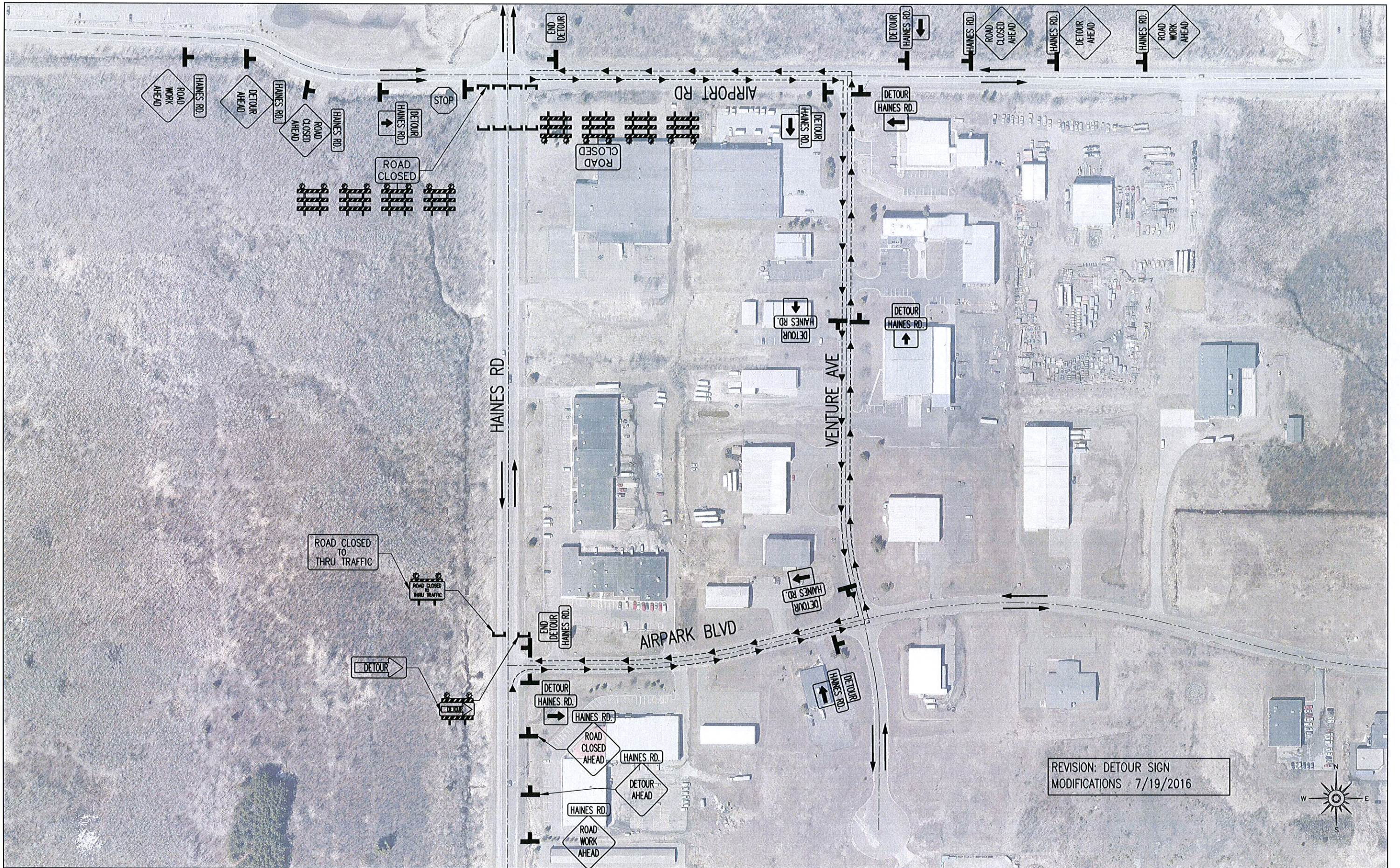
604 FOUR OR MORE AXLE UNIT, STRAIGHT BODY TRUCK

GROUP 3	2015-10-12	26.20	14.40	40.60
605 BITUMINOUS DISTRIBUTOR DRIVER				
606 BITUMINOUS DISTRIBUTOR (ONE PERSON OPERATION)				
607 THREE AXLE UNITS				
GROUP 4	2015-10-12	27.82	17.20	45.02
608 BITUMINOUS DISTRIBUTOR SPRAY OPERATOR (REAR AND OILER)				
609 DUMP PERSON				
610 GREASER				
611 PILOT CAR DRIVER				
612 RUBBER-TIRED, SELF-PROPELLED PACKER UNDER 8 TONS				
613 TWO AXLE UNIT				
614 SLURRY OPERATOR				
615 TANK TRUCK HELPER (GAS, OIL, ROAD OIL, AND WATER)				
616 TRACTOR OPERATOR, UNDER 50 H.P.				
SPECIAL CRAFTS				
701 HEATING AND FROST INSULATORS	2015-10-12	39.31	16.20	55.51
	2016-06-06	41.26	15.80	57.06
702 BOILERMAKERS	2015-10-12	34.15	26.37	60.52
	2016-01-01	35.55	26.52	62.07
703 BRICKLAYERS	2015-10-12	32.87	20.96	53.83
704 CARPENTERS	2015-10-12	34.11	17.08	51.19
	2016-05-01	35.65	17.08	52.73
705 CARPET LAYERS (LINOLEUM)	2015-10-12	32.13	12.85	44.98
706 CEMENT MASONS	2015-10-12	33.70	17.38	51.08
	2016-05-01	34.20	17.38	51.58
707 ELECTRICIANS	2015-10-12	33.90	24.13	58.03

	2016-05-29	35.01	24.62	59.63
711 GROUND PERSON	2015-10-12	27.44	13.28	40.72
	2016-04-04	28.26	13.92	42.18
712 IRONWORKERS	2015-10-12	31.04	23.45	54.49
713 LINEMAN	2015-10-12	32.27	14.11	46.38
714 MILLWRIGHT	2015-10-12	36.28	15.33	51.61
	2016-05-01	37.83	15.33	53.16
715 PAINTERS (INCLUDING HAND BRUSHED, HAND SPRAYED, AND THE TAPING OF PAVEMENT MARKINGS)	2015-10-12	26.66	18.77	45.43
	2016-05-02	28.01	18.77	46.78
716 PILEDRIVER (INCLUDING VIBRATORY DRIVER OR EXTRACTOR FOR PILING AND SHEETING OPERATIONS)	2015-10-12	34.11	17.08	51.19
	2016-05-01	35.65	17.08	52.73
717 PIPEFITTERS . STEAMFITTERS	2015-10-12	40.95	17.01	57.96
719 PLUMBERS	2015-10-12	40.25	17.71	57.96
	2016-05-01	41.80	17.71	59.51
721 SHEET METAL WORKERS	2015-10-12	30.52	25.36	55.88
723 TERRAZZO WORKERS	FOR RATE CALL 651-284-5091 OR EMAIL DLI.PRE VWAGE@STATE.MN.US			
724 TILE SETTERS	FOR RATE CALL 651-284-5091 OR EMAIL DLI.PRE VWAGE@STATE.MN.US			
725 TILE FINISHERS	FOR RATE CALL 651-284-5091 OR EMAIL			

DLI.PRE VWAGE@STATE.MN.US

727 WIRING SYSTEM TECHNICIAN	2015-10-12	36.00	14.43	50.43
	2016-07-01	36.90	14.43	51.33
728 WIRING SYSTEMS INSTALLER	2015-10-12	25.21	12.02	37.23
	2016-07-01	25.84	12.02	37.86
729 ASBESTOS ABATEMENT WORKER	2015-10-12	28.50	16.88	45.38
	2016-01-01	29.30	17.33	46.63
730 SIGN ERECTOR	FOR RATE CALL 651-284-5091 OR EMAIL <u>DLI.PRE VWAGE@STATE.MN.US</u>			



REVISION: DETOUR SIGN
MODIFICATIONS 7/19/2016

I HEREBY CERTIFY THAT THIS PLAN WAS PREPARED BY ME OR UNDER MY DIRECT SUPERVISION AND THAT I AM A DULY LICENSED PROFESSIONAL ENGINEER UNDER THE LAWS OF THE STATE OF MINNESOTA.
SIGNATURE: Tim A. Sanders
TIM A. SANDERS, P.E.
TYPE NAME

DATE: JULY 8, 2016
LIC. NO.: 50401



CITY OF DULUTH
ENGINEERING DIVISION
411 W. 1ST ST. STE. 211
DULUTH, MN 55802

GAS MAIN INSTALLATION FOR CIRRUS EXPANSION
CITY PROJECT NO.: 1551
STATE AID PROJECT NO.: N/A

DRAWN BY: KLM
TRAFFIC CONTROL PLAN
SHEET NO. 8 OF 26

END OF ADDENDUM