

SUMMER PROGRAMS

JUNE-AUGUST 2026



duluthmn.gov/parks

ABOUT US.....	4
INFORMATION	5
REGISTRATION INFORMATION.....	6
COMMUNITY EVENTS.....	8
GENERAL PROGRAMS.....	10
ADULT LEAGUES	20
YOUTH PROGRAMS	21
SENIOR PROGRAMS.....	25
FACILITY RESERVATIONS	28
PARKS PLANNING	31



2025 Impact: Programs, Activities, and Events

Duluth Parks & Recreation provides the community with a wide range of opportunities to spend time together, build relationships and skills, and live healthy, active lifestyles. If you've participated with us so far, THANK YOU! If you haven't yet, we'd love to see you at a program, activity, or event in the future!



3,800+ hours of recreational, educational, and social activities



2,000+ activity sessions across 165 activity topics



51,000+ experiences for community members in Duluth Parks & Recreation programs

Stay Connected: Follow us on Social Media!

Learn about programs, events, alerts, trail closures, cancellations, and projects across the Duluth park and trail system.

@DuluthParksMN

Facebook

Instagram



Mission Statement

To promote the health and well-being of our community, environment and economy by facilitating recreational opportunities and coordinating the enhancement of our parks, facilities and natural resources now and into the future.

Vision Statement

To be the central driving force in strengthening the heritage of a healthy, active community for future generations by continuing on the path of improving and enhancing our parks and facilities, protecting our natural resources, and developing partnerships to deliver recreation programs and services.

Financial Assistance Policy

The goal of the fee assistance policy is to lower financial barriers to participation in park programs for Duluth residents in financial need. Eligibility for the program is determined by completing an application and verifying City of Duluth residency. Qualified household members will be eligible to receive a discounted price on Parks and Recreation program fees. The discount is valid for the calendar year in which citizens applied and applicants must reapply for fee assistance each year. To qualify for assistance, applicants must affirm, one, that they are Duluth residents, and, two, that they are receiving, or are eligible for, one of the following benefits:

- School Free and Reduced lunch program
- Housing Authority (HUD) Section 8 Rent Subsidy
- Medicare or Medicaid
- County financial assistance (SNAP, Emergency or Medical Assistance, Unemployment)
- Social Security Disability

The amount of fee assistance provided to each participant is limited per calendar year to \$300 per participant for qualifying programs. Programs that qualify for fee assistance are denoted in the description of individual programs.

Registration: Online or by Phone

To register for Parks & Recreation programs, please visit our website: duluthmn.gov/parks/register or call the office at 218-730-4300. Log in with your username and password, or create an account if you are new.

Create Account

- Go to duluthmn.gov/parks/register
- Select “Create an Account”
- Enter all required information (all family members, contact information and birthdates must be entered - including correct year)

Payment must be made at the time of registration by cash, check, or credit card.

Cancellations and Refunds

- Participants wishing to withdraw from a program must do so at least three days prior to the start of the program or by the stated registration deadline to guarantee a full refund.
- Partial refunds after the start of the program are only considered if injury or serious illness occurs and must be approved.
- Refunds can take up to three weeks to process.
- Cancellations for registration-based programs are communicated via email. If program is cancelled by Parks & Recreation, full refunds will be issued. Cancellations for drop-in programs and events will be posted on social media and Parks & Recreation website: duluthmn.gov/parks/cancellations

Photo Policy

Photographs and video are occasionally taken of participants while they are in programs, special events, city facilities, or while enjoying park spaces. Please note that these photos may be published by the City of Duluth.

Contact US

Phone: 218-730-4300

Email: parks@duluthmn.gov

Facebook and Instagram: DuluthParksMN

Address: City Hall (Ground Floor)

411 W First Street, Duluth, MN 55802

Looking for a way to give back?

Volunteer

in Duluth's parks, trails, fields, and green spaces.

Visit our website to:

- Adopt a tree with *reLEAF Duluth*
- Organize your own cleanup and request supplies with a form
- Support the removal of invasive plant species with Duluth Invaders
- Learn about volunteering with our partners

duluthmn.gov/parks/volunteer/volunteer-information



HEADING TO THE BEACH? KNOW BEFORE YOU GO!

Learn about conditions at Park Point by visiting ParkPointBeach.org

Find current information about:

- Swim hazard risk
- Water and wave information
- Bacteria warnings
- Summer lifeguard schedule

VISIT: PARKPOINTBEACH.ORG

Forget to check the website? You can also learn about hazard risk from the electronic road sign at the S curve on Minnesota Ave by Franklin Park and the 12th Street Beach.

Dangerous Currents

Avoid Dangerous Areas:

- Stay in designated swim areas
- Avoid swimming near piers and breakwalls. Many fatalities have occurred.



If trapped in a dangerous current:

- Swim to the side, out of the current, and then to shore.
- If in danger, call for someone to throw a life ring or anything that floats.

The Great Lakes Water Safety Consortium is a community of 100+ people working together to reduce fatalities in the Great Lakes. Learn more at www.greatlakeswater.org



To see current conditions at this and other beaches, scan the QR code with your mobile device.



MUSIC IN THE PARK 2026

Lincoln Park (2501 W. 3rd St.) • Tuesday Nights
6:30-8 p.m. • Free admission

JUNE

- 16 Palisade Classic Rock and Pop
- 23 The Shane Nelson Band..... Variety Covers and Originals
- 30 The Windjammers Big Band

JULY

- 7 Tab & Nicole Acoustic Covers and Originals (6:30-7:10 pm)
- 7 The Mahon Brothers Folk/Country (7:20-8:00 pm)
- 14 Rory Van James Folk/Alternative Country/Rock
- 21 The Gemstones Funk/Soul/Rock
- 28 Peat Boggs Groove Psychedelia

AUGUST

- 4 Lydia Boyum & Ryan Lane Folk (6:30-7:10 pm)
- 4 Four Mile Portage Americana (7:20-8:00 pm)
- 11 Indecent Proposal Rock/Pop/Americana
- 18 Rain Date

Please check our website, social media, or call our weather hotline after 4 p.m. for cancellations
duluthmn.gov/parks • @DuluthParksMN • 218-730-4321x2

Twin Ports Express food truck on site • Bring a lawn chair!



May 16 is Neighborhood Clean Up Day

On Saturday, May 16, we encourage residents to simply bring your own trash bag to any local park, trail, or green space and help clear away debris.



Win a \$10 off coupon!

Ten participants will be randomly selected to receive a **\$10 discount coupon** for a future Duluth Parks & Recreation program.

After you finish, visit the link below to help us track our collective efforts.

bit.ly/may16cleanupday



POP-UP SPLASH PAD



Cool off at a neighborhood park with Duluth Parks & Rec and the Duluth Fire Department! Run through sprinklers, participate in water games, and enjoy other fun challenges.

Thursday, July 9 from 3 - 5 p.m. at Grant Park: 901 E 11th St.

Thursday, July 23 from 3 - 5 p.m. at Keene Creek Park: Bristol St. & 63rd Ave. W.

Thursday, August 6 from 3 - 5 p.m. at Morgan Park: 1242 88th Ave. W.

In the event of severe weather, cancellations or updates will be posted to social media and our website: duluthmn.gov/parks/cancellations

Learn to Disc Golf

Learn the basics of disc golf while spending time on our local courses. Topics will include how to play, different types of discs, throwing techniques, and course etiquette. Groups will practice their skills as we play and learn our way around the course! *Eligible for fee assistance.*

Ages: 12+

Quarry Park, 1242 88th Ave W

Th | May 28 | 5-6 p.m. | \$5 | Course #4503

Themed Skating Nights

Join us this summer for two free skating events. Get ready to glide, groove, and sparkle to your favorite K-Pop hits in June, and enjoy a beach-themed ice skating party in July!

Ages: All

Essentia Duluth Heritage Center,
120 S 30th Ave W

Free

Day	Date	Time	Theme
W	June 17	6:30-8 p.m.	K-Pop Night
Su	July 19	3-5 p.m.	Beach Party

Open Skate

Keep skating through the summer! Glide around at an indoor ice rink (no sticks or pucks allowed for a comfortably paced environment). Pre-register online or pay at the door – cash and cards accepted. Entry fee includes skates and a helmet if needed, or bring your own. *Eligible for fee assistance.*

Ages: All

Essentia Duluth Heritage Center,
120 S 30th Ave W

June 3-Sept. 2* | Su 3-5 p.m. | W 6:30-8 p.m.
\$5

*No Open Skate July 5

Voyager Canoeing

Spend the day experiencing the St. Louis River estuary from a 15-person Voyageur-style canoe! Amnicon Adventures will lead this paddling day trip on our beautiful river. Youth must attend with an adult; both need to register online. Lunch is provided. Upon registration, you will receive communication from Parks & Recreation on additional information needed by Amnicon Adventures. *Funding for these programs provided by the Great Lakes Restoration Initiative in cooperation with the National Park Service.*

Ages: 11+

Munger Landing, Clyde Ave

9 a.m.-3 p.m. | Free

Day	Date	Course #
Sa	June 6	4448
Su	Aug. 16	4449



Morning Yoga

Welcome the weekend with morning yoga at Enger Park led by Full Circle Yoga of Duluth. Yoga will begin at 8 a.m. at the pavilion overlooking our great city and great lake. Please bring a yoga mat, comfy clothes, and water. *There will be no yoga on July 4. Register for cancelations.

Ages: All

Enger Park, 1601 Enger Tower Dr

Sa | June 6-Aug. 29* | 8-9 a.m. | Free
Course #4407

Fishing Club

We will provide all tackle and bait, but feel free to bring your own as well. Children fish for free. All adults must have a valid MN fishing license. Come for the fun, an education, and community! *Funding for these programs provided by the Great Lakes Restoration Initiative in cooperation with the National Park Service.*

Ages: All

W | 9-11 a.m. | Free | Course #4505

June 10-Aug. 19

Chambers Grove, 13404 MN-23

Gone Fishin'

We'll teach you how to fish and share fishing stories of the past. We will provide rods and reels, tackle and live bait to share; participants are also welcome to bring their own equipment. Prior fishing experience welcome, this program is for anyone looking to learn something new, refresh their skills, or just go fishing. *Funding for these programs provided by the Great Lakes Restoration Initiative in cooperation with the National Park Service.*

Ages: All

3-5 p.m. | Free

Day	Date	Location	Course #
M	June 15	Chambers Grove, 13404 MN-23	4533
M	June 29	Chambers Grove, 13404 MN-23	4534
M	July 13	Park Point Rec Area, 5041 Minnesota Ave	4536
M	Aug. 10	Twin Ponds, W Skyline Dr & 14 Ave W	4537

Painting in the Park

Join Duluth Parks and Recreation and Northern Exposure Art for a fun, beginner-friendly outdoor painting class where you'll create your own river themed canvas. All supplies included. Registration required. *Funding for these programs provided by the Great Lakes Restoration Initiative in cooperation with the National Park Service. Program free for zip codes: 55807 & 55808, verified during registration.*

T | 6-8 p.m. | \$20 | Chambers Grove, 13404 MN-23

Date	Course #
July 7	4553
Aug. 4	4544

Flycasting Clinics

The local Gitche Gumee chapter of Trout Unlimited is once again providing their expertise to lead free flycasting clinics in different Duluth parks this summer. This is a great opportunity for community members to learn about the basic equipment and casting skills involved in fly fishing. Trout Unlimited’s instructors will teach the basics of casting a flyrod and introduce some basic flyfishing concepts. All equipment is provided! If either session is cancelled due to weather, a make-up date will be held on Monday, July 6, and registered participants will be notified.

Ages: 12+

6-8 p.m. | Free

Date	Day	Location	Course #
June 16	Tu	Lester Park, 61st Avenue East and Superior Street	4423
June 29	M	Chambers Grove Park, 13404 MN Highway 23	4424

Pop-Up Play

Join our programming team at a new park every week for Pop-Up Play! We will have extra games and activities each Thursday at a city park.

Ages: All

Th | 4-6 p.m. | Free

Date	Location
June 4	Lincoln Park, 25th Ave W & 5th St
June 11	Piedmont Park, 2302 W 23rd St
June 18	Riverside Park, 55 Cato St
June 25	Portland Square, 1016 E 5th St
July 9	Grant Park, 901 E 11th St <i>Pop-Up Splash Pad from 3-5 p.m.</i>
July 16	Merritt Park, 4017 W 7th St
July 23	Keene Creek Park, Bristol St & 63rd Ave W <i>Pop-Up Splash Pad from 3-5 p.m.</i>
July 30	Washington Square, 4215 E Superior St
Aug. 6	Morgan Park, 1242 88th Ave W <i>Pop-Up Splash Pad from 3-5 p.m.</i>
Aug. 13	Blackmer Park, 8301 Beverly St
Aug. 20	Observation Park, 914 W 3rd St
Aug. 27	Duluth Heights Park, 33 Mulberry St



Adventure Book Club

Join Duluth Public Library for a book club in the great outdoors! Held at a different City park each month, we'll discuss a book with an outdoor theme, followed by a low-impact, optional hike led by Parks & Recreation.

Ages: 18+

F | 10 a.m.-Noon | Free

Date	Location	Book	Course #
June 12	Fairmont Park, <i>72nd Ave W & Grand Ave</i>	Tree Trek by Stephanie Mirocha	4402
July 10	Enger Park, <i>1601 Enger Tower Dr</i>	Nature and the Mind by Marc Berman	4403
Aug. 14	Brighton Beach, <i>Brighton Beach Rd</i>	Wild Dark Shore by Charlotte McConaghy	4404
Sept. 11	Congdon Park, <i>33rd Ave E & Superior St</i>	Walkable City by Jeff Speck	4405
Oct. 9	Y-Ker Acres – Field Trip Meet at Wheeler, <i>3501 Grand Ave</i>	Dodge County Inc. by Sonja Trom Eayrs	4406

Music Together – Mixed Age Classes

Discover the joy of making Music Together! Sing, laugh, move and learn along with your baby, toddler or preschooler for pure fun each week in these award-winning classes. We bring families together in a warm, supportive environment with the goal of having everyone feel comfortable singing, dancing and jamming. Because young children learn best from the powerful role models in their lives, our engaging classes show parents and caregivers how to help their children become confident, lifelong music-makers just by having fun making music themselves. Classes are mixed-age so the siblings can be together. Infants under eight months on the first day of the session attend free with a paid sibling. Receive a CD, a code to download the music, an illustrated songbook and parent education materials.

Note: additional sibling rate is \$86; use “Additional Sibling – Summer Music Together” Discount during check-out for this rate. Infants under 8 months (born after October 20, 2025) can attend for free with a registered sibling.

Ages: 0-5 with adult caregiver

M | \$160; additional sibling \$86

Day	Time	Cost	Course #:
June 15 - Free Demo	9:15-10 a.m.	Free	4426
June 15 - Free Demo	10:15-11 a.m.	Free	4427
June 15 - Free Demo	4:15-5 p.m.	Free	4428
June 15 - Free Demo	5:15-6 p.m.	Free	4429
June 22-Aug. 10	9:15-10 a.m.	\$160	4430
June 22-Aug. 10	10:15-11 a.m.	\$160	4431
June 22-Aug. 10	4:15-5 p.m.	\$160	4432
June 22-Aug. 10	5:15-6 p.m.	\$160	4433

Intro to Paddling

Join UMD’s Recreation Sports and Outdoor Program (RSOP) for an opportunity to paddle the St. Louis River from a kayak or canoe. RSOP will provide paddle instruction including stroke techniques and safety instruction. After an instruction portion, RSOP will lead a guided paddle to experience the river. All gear will be provided including life jackets, canoes, and paddles. No prior paddle experience necessary. Registration required. Sessions will either be all kayaks or all canoes. *Funding for these programs provided by the Great Lakes Restoration Initiative in cooperation with the National Park Service.*

Ages: 8+

Munger Landing, *Clyde Ave*

Free

Day	Date	Time	Paddle Craft Focus	Course #
Th	June 18	4-8 p.m.	Kayak	4450
Sa	July 11	10 a.m.-2:30 p.m.	Canoe	4451
W	July 15	10 a.m.-2:30 p.m.	Canoe	4452
Th	July 16	4-8 p.m.	Canoe	4453
Tu	July 21	4-8 p.m.	Kayak	4454
M	Aug. 10	4-8 p.m.	Canoe	4455

Community SUP Paddle Nights

Join North Shore SUP and their Paddle It Forward initiative for a fun, educational Stand-Up Paddleboarding experience at the river’s edge. Enjoy a demo-style event featuring a brief on-land lesson before heading out on the water. North Shore SUP provides all equipment and instructors to teach SUP basics and water safety while introducing this lifelong sport. No pre-registration required. Last SUPs leave shore at 7:50 p.m. *Funding for these programs provided by the Great Lakes Restoration Initiative in cooperation with the National Park Service.*

Ages: All

6-8 p.m. | Free

Day	Date	Location	Course #
M	June 22	Chambers Grove, <i>13404 MN-23</i>	4457
Tu	June 23	Chambers Grove, <i>13404 MN-23</i>	4458
M	July 20	Chambers Grove, <i>13404 MN-23</i>	4459
F	July 31	Chambers Grove, <i>13404 MN-23</i>	4460
M	Aug. 3	Chambers Grove, <i>13404 MN-23</i>	4461

Intro to Archery

Learn a new skill and practice your accuracy at Intro to Archery! Participants will learn the basic safety, technique, and process for shooting archery and practice their skills on the range. This is an introductory class for families and community members to learn the basics of archery in an outdoor setting. The bows that will be used are not suitable for children under the age of 8. All equipment provided; no personal archery equipment allowed. Closed-toe shoes required for archery. Funding for these programs provided by the *Great Lakes Restoration Initiative in cooperation with the National Park Service.*

Ages: 8+

Morgan Park, 1242 88th Ave W

6:30-8 p.m. | Free

Day	Date	Course #
Tu	June 9	4486
M	June 22	4487
Th	July 16	4488
M	July 27	4489



Minnesota Twins Bus Trip

Board the bus and head south for the Twins vs. Royals in an intra-league showdown! Bus will depart from the Wade Stadium parking lot at 8:30 a.m. with first pitch 12:40 p.m. at Target Field. Arrival time back in Duluth will be shortly after 6 p.m. Ticket and transportation are covered in your registration fee. Deadline to register is Wednesday, July 8. Youth must be accompanied by an adult.

Ages: All

Wade Stadium, 35th Ave W & 1st St

Th | July 30 | 8:30 a.m.-6 p.m. | \$85

Course #4541

SUP Full Moon Paddle

Join Parks & Recreation and North Shore SUP on an evening guided paddle along the St. Louis River! You will learn the basics of Stand-Up Paddleboarding, provided with appropriate equipment including PFDs, properly-sized paddleboards, and paddles, and get to safely spectate the setting sun and rising of August's Sturgeon Full Moon from a unique perspective out on the water! The program has limited space and registration is required. *Funding for these programs provided by the Great Lakes Restoration Initiative in cooperation with the National Park Service.*

Ages: 14+

Chambers Grove, 13404 MN-23

F | Aug. 28 | 7-9 p.m. | Free | Course #4087

Max Registration: 10

River Rides

These all-ages bike rides are flexible and inclusive, with the option to join one or both segments. Staff will accompany riders during supported portions and return to the starting point at the end. Adults must ride with and supervise youth participants. Rides move at a relaxed, social pace for all ability levels. Limited helmets and pedal bikes are available to borrow – please note your needs during registration.

Fairmont Park: DWP & Waabizheshikana Ride – The first hour features a warm-up ride on the paved DWP trail. After the warm-up, participants who are interested may continue for a second hour by crossing Grand Avenue and riding the Waabizheshikana along the St. Louis River.

Morgan Park: Skills & Spirit Lake Delta Cap Ride – The first hour focuses on basic bike skills practice to help youth and adults build confidence, balance, and control. After the skills session, participants who are interested can continue for a second hour with a group ride along the new trails on the Spirit Lake Delta Cap. *Funding for these programs provided by the Great Lakes Restoration Initiative in cooperation with the National Park Service.*

Ages: All

10 a.m.-noon | Free

Day	Date	Location	Course #
Su	July 12	Fairmont Park, <i>End of Fremont St</i>	4527
Su	Aug. 23	Morgan Park, <i>1242 88th Ave W</i>	4528

Sailing with Duluth Superior Sailing Association

Learn the basics of sailing with the Duluth Superior Sailing Association (DSSA). Participants will spend time both onshore and out sailing. Participants will start with learning basic sailing knowledge like wind direction, simply sailing knots, and parts of a sailboat. The second half of the lesson will be rigging a sailboat and working on more basic sailing skills while under sail. New sailors will learn to sail up wind, downwind, how to approach the dock, and on water safety skills. This is a great way to get into sailing and then explore more instruction and opportunities with DSSA! This course is two evenings.

Ages: 16+

Park Point, *45th St & Minnesota Ave*

\$150-\$170

Day	Dates	Time	Course #
M	Aug. 17 & 24	5-8 p.m.	4129
Tu	Sept. 1 & 8	5-7:30 p.m.	4130
Th/F	Sept. 3 & 11	5-7:30 p.m.	4131

Waabizheshikana Walk

Join Parks & Recreation as we walk sections of Waabizheshikana, The Marten Trail. Enjoy views of the St. Louis River as we chat about new trail projects and look for life along the river. We'll meet at the trailhead and walk the trail together. This trail is wide, hard packed, and certain sections are gentle sloping. *Funding for these programs provided by the Great Lakes Restoration Initiative in cooperation with the National Park Service.*

Ages: All

Su | Noon-2 p.m. | Free

Date	Location	Course #
June 28	Waabizheshikana Trailhead, 7011 Pulaski St	4529
July 19	Morgan Park, 1242 88th Ave W	4530
Aug. 2	Boy Scout Landing, 11 Commonwealth Ave	4531
Aug. 16	Chambers Grove, 13404 MN-23	4532

Full Moon Hike

On the evening of the full moon, join us for a hike to watch the full moon rise over our city. Headlamps will be provided if desired. *Eligible for fee assistance.*

Ages: All

\$5

Day	Date	Time	Location	Distance/Difficulty	Course #
F	May 1	8:30-9:30 p.m.	Park Point, 4599 Minnesota Ave	Up to 2mi/more difficult	4319
Su	May 31	8:30-9:30 p.m.	Hartley Park, 3001 Woodland Ave	Up to 2mi/more difficult	4520
M	June 29	8:30-9:30 p.m.	Quarry Park, 1325 59th Ave W	Up to 2mi/easiest	4521
W	July 29	8:30-9:30 p.m.	Piedmont Trailhead, Hutchinson Rd	Up to 3mi/easy	4522
F	Aug. 28	8-9 p.m.	Fairmont Park, End of Fremont St	Up to 2mi/easy	4523

Dragonfly Discovery

Join Parks & Recreation and local dragonfly researcher/photographer Nicole Birch (Bellskimmer Studio) as we stroll Waabizheshikana along the St. Louis River, watching for these dazzling fliers as they zip, hover, and glide along the shoreline. Along the way, learn what makes dragonflies unique, how to identify different species, and the important role they play in our ecosystem. *Funding for these programs provided by the Great Lakes Restoration Initiative in cooperation with the National Park Service.*

Ages: All

Day	Date	Time	Location	Course #
Sa	June 27	11 a.m.-1 p.m.	Morgan Park, 1242 88th Ave W	4524
Sa	July 11	11:30 a.m.-1:30 p.m.	Morgan Park, 1242 88th Ave W	4525

Warbler Walks

The St. Louis River is a hot spot for birds in the Twin Ports area. Join us each week where we discover different birding locations along the river in search of warblers, raptors, and other feathered finds! Whether you're brand new to birding or looking to add to your life list, this guided gathering is a fun and easy way to sharpen your skills and discover local wildlife. Bring your own binoculars or borrow a pair of ours. *Funding for these programs provided by the Great Lakes Restoration Initiative in cooperation with the National Park Service.*

Ages: All

Th | 10 a.m.-Noon | Free

Date	Location	Course #
June 4	Indian Point, 7000 Pulaski St	4473
June 11	Blackmer Park, 8301 Beverly St	4474
June 18	Spirit Lake, 1242 88th Ave W	4475
June 25	Chambers Grove, 13404 MN-23	4476
July 9	Indian Point, 7000 Pulaski St	4477
July 16	Spirit Lake, 1242 88th Ave W	4478
July 23	Boy Scout Landing, 11 Commonwealth Ave	4479
July 30	Chambers Grove, 13404 MN-23	4480
Aug. 6	Indian Point, 7000 Pulaski St	4481
Aug. 13	Spirit Lake, 1242 88th Ave W	4482
Aug. 20	Boy Scout Landing, 11 Commonwealth Ave	4483
Aug 27	Chambers Grove, 13404 MN-23	4484

Women Hike Duluth

We have partnered with Hike Duluth to provide guided hikes at various parks to encourage women to be active and meet others who also enjoy the outdoors. Wear sturdy shoes and dress for the weather. Each month will be a new location.

Ages: All

Free

Day	Date	Time	Location	Course #
M	June 15	6-7 p.m.	Enger Park, 1601 Enger Tower Dr	4499
M	July 20	6-7 p.m.	Kingsbury Creek, End of Fremont St	4500
M	Aug. 17	6-7 p.m.	Tischer Creek, E Superior St & Congdon Park Dr	4501

Hiking the Superior Hiking Trail: The Duluth Edition

Hike the Duluth section of the Superior Hiking Trail with Duluth Parks & Recreation! Throughout our weekly guided hike series, we will be completing the Duluth section of the Superior Hiking Trail.

Hikers must sign up for shuttle in advance to guarantee a spot on the shuttle. The Parks & Rec shuttle will meet at the end location and transport you to the start location. Hikers are welcome to hike ahead at their own pace or stay with the group, ending at the shuttle pick-up location. Hikes will be on Tuesday evenings and Sunday afternoons. Please bring water, adequate footwear, and a camera. *Eligible for fee assistance.*

All hikes are on Tuesday and the shuttle pick-up times are at 5:15.

Ages: All | \$5

Day	Course #	Shuttle Pick-Up Location	Hiking Route	Miles	Approximate Hike Time
June 23	4542	Beck's Rd/Munger Trailhead <i>11804 123rd Ave W</i>	Fond du Lac Trailhead to Beck's Rd/Munger Trailhead	2.7	1.5 hrs
June 30	4551	Magney Snively Trailhead <i>Trailhead near 10005 W Skyline Pkwy</i>	Beck's Rd/Munger Trailhead to Magney Snively Trailhead	4.3	2.5 hrs
July 7	4543	Spirit Mountain, Parking Lot B <i>9500 Spirit Mountain Pl</i>	Magney Snively Trailhead to Spirit Mountain Trailhead	3.2	1.5 hrs
July 14	4544	Kingsbury Creek Trailhead <i>7215 Waseca St</i>	Spirit Mountain Trailhead to Kingsbury Creek Trailhead	2.0	1 hr
July 21	4545	Skyline/Highland Trailhead <i>7051 W Skyline Pkwy</i>	Kingsbury Creek Trailhead to Skyline/Highland Trailhead	3.2	1.5 hrs
July 28	4546	Haines Rd Trailhead <i>3210 Haines Rd</i>	Skyline/Highland Trailhead to Haines Rd Trailhead	2.6	1.5 hrs
Aug. 4	4547	Enger Park Trailhead <i>1461 W Skyline Pkwy</i>	Haines Rd Trailhead to Enger Park Trailhead	4.5	2.5 hrs
Aug. 11	4548	Rose Garden <i>15 S 13th Ave E</i>	Enger Park Trailhead to Rose Garden Trailhead	3.8	2.25 hrs
Aug. 18	4549	Hartley Trailhead <i>3001 Woodland Ave</i>	Rose Garden to Hartley Park Trailhead	4.5	2.5 hrs

Pickleball League

Pickleball is a fun, rapidly growing sport enjoyed by all ages and skill levels. Each week people will split up and play singles and/or doubles. No weekly schedule or results recorded. Limited paddles and pickleballs available to sue. Program dependent on weather, no refunds for weather cancellations.

Eligible for fee assistance.

Ages: 18+

Wheeler Athletic Complex, 3501 Grand Ave

M | 6-7:30 p.m. | \$15 per session

	Date	Course #
Session 1	June 8-July 13	4538
Session 2	July 20-Aug. 24	4539

Ultimate Frisbee League

Throw, catch, and score your way to a great time by participating in this ultimate frisbee league. Sign up as an individual and then be placed on a team. Deadline to sign up is Tuesday, May 26.

Ages: 18+

Arlington Athletic Complex, 601 S Arlington Ave

Tu | June 2-July 28 | 6-9 p.m. | \$40 | Course #4540



Jazz/Ballet Dance with 218 Dance Project

Professional instructors from 218 Dance Project will be leading youth dance classes this summer! All classes run for five weeks; the last session of each class is a final performance.

The 45-minute class for youth ages 3-5 incorporates all five of the child’s senses. Here, children will learn about musicality and movement skills by skipping, hopping, and clapping to the beat of the music and by learning basic jazz and ballet movement in a fun and creative way.

Dancers ages 6-9 will have a blast in this fun, upbeat, and high energy 1-hour class. This class, for beginner-intermediate dancers, specifically focuses on developing rhythm and coordination while encouraging individual style.

Portman Community Center, 4601 McCulloch St

Day	Date	Ages	Cost	Time	Course #
W	June 3-24	3-5	\$45	5-5:45 p.m.	4467
W	June 3-24	6-9	\$55	6-7 p.m.	4468
W	July 15-Aug. 5	3-5	\$45	5-5:45 p.m.	4471
W	July 15-Aug. 5	6-9	\$55	6-7 p.m.	4472

NFL FLAG FOOTBALL

Sept. 8 - Oct. 13 | Wheeler Athletic Complex
Every Tuesday and Thursday evenings

- For boys and girls in grades K-8th
- Includes NFL jersey and flag belt
- Learn fundamentals of flag football

Interested In Becoming A Referee?

We are currently looking for individuals to ref during our fall season. Pay rate based on experience. For more information please email parks@duluthmn.gov or call 218-730-4314.



REGISTRATION OPENS MONDAY, JUNE 15

Story & Play

Join us in a different neighborhood park each week for storytime in the park at 9:30 a.m. with the Duluth Public Library, followed by fun, youth-focused recreation activities with Duluth Parks & Recreation! Storytimes introduces young children to books, rhymes, music, and other fun activities that promote early literacy skills! Geared to children 0-5; any age is welcome to enjoy the story or play with recreation equipment.

9:30-11:30 a.m. | Free

Day	Date	Location
M	June 8	Merritt Park, 4017 W 7th St
M	June 15	Lincoln Park, Lincoln Park Dr & W 3rd St
M	June 22	Blackmer Park, 8301 Beverly St
Sa	June 27	Keene Creek Park, N 63rd Ave W & Bristol St
M	June 29	Wheeler Athletic Complex, 3501 Grand Ave
M	July 6	Irving Park, 20 S 57th Ave W
Sa	July 11	Portland Square, 1016 E 5th St
M	July 13	Lester Park, 61st Ave E & Superior St
M	July 20	Riverside Park, 55 Cato Ave
M	July 27	Enger Park, 1601 Enger Tower Dr
Sa	Aug. 1	Portman Park, 4601 McCulloch St
M	Aug. 3	Observation Park, 914 W 3rd St
M	Aug. 10	Fairmont Park, End of Fremont St

Basic Mountain Biking Skills

Learn and practice basic mountain biking skills, including practicing on mobile skills elements. Skills covered will include braking, body position, cornering, and more. Youth should know how to ride a pedal bike, and all equipment is provided (including bikes and helmets). *Eligible for fee assistance.*

Ages: 9-12

Observation Park, 914 W 3rd St

\$18

Day	Date	Time	Course #
W	June 10	1-4 p.m.	4434
Tu	June 30	1-4 p.m.	4435
W	July 15	9 a.m.-12 p.m.	4436

Friday Fun

Youth will spend their day learning about and participating in specialized activities. Please read the descriptions, as these topics will be the focus for our day. The day runs from 8 a.m.-4 p.m. Drop off time is between 8-8:30 a.m.; pick up time is between 3-4 p.m.

Fishing: Learn the basics of fishing including skills like tying an angler’s knot, baiting a hook, casting, and more! We’ll spend most of the day at local shore fishing spots.

Wizards & Warlocks: Spend these dates visiting a different realm. Delve into the world of fantasy, folklore, and storytelling. Activities will include costume and prop creation, an introduction to tabletop role-playing games, and more! For those unfamiliar with this concept, this activity is a great fit for youth interested in things like Wings of Fire, Lord of the Rings, Harry Potter, Dungeons & Dragons, and similar fantasy-themed worlds.

Mountain Biking: Learn about the world of mountain biking! Activities will include instruction on basic mountain biking skills from certified instructors and practicing biking skills in different activities, drills, and challenges. Youth should know how to ride a pedal bike, and all equipment is provided (including bikes and helmets!). We’ll spend most of the day on a mountain biking field trip.

Archery: Spend the day learning and practicing the basics of archery! Topics covered will include range and equipment safety, basic technique, and include lots of practice in games, challenges, and an archery tournament. *Eligible for fee assistance.*

Ages: 9-12

Observation Park, 914 W 3rd St

F | 8 a.m.-4 p.m. | \$60

Date	Activity	Course #
June 12	Fishing	4438
June 26	Fishing	4439
July 10	Mountain Biking	4440
July 17	Mountain Biking	4441
July 24	Mountain Biking	4442
July 31	Wizards & Warlocks	4443
Aug. 7	Wizards & Warlocks	4444
Aug. 14	Archery	4445
Aug. 21	Archery	4446



Youth on Trails

Youth on Trails invites youth ages 10–14 to discover the outdoors, try new activities, and explore Duluth’s natural spaces in a safe and welcoming environment. What began in 2023 as a youth mountain biking program now continues as a year-round adventure program where participants can experience a new activity or destination each month. *Eligible for fee assistance.*

All equipment is provided.

June - Hike and Fish: spend the afternoon hiking and fishing along one of Duluth’s 16 designated trout streams in search of rainbow trout, brook trout, and any other stream-dwelling fish! This date will meet at Observation Park and drive to the activity location in a Parks vehicle.

July - Basic Mountain Bike Skills and Ride: learn and practice basic mountain biking skills, then take a group ride on beginner-level mountain bike trails.

August – Hike and Navigate: Hike trails around Enger Park, Twin Ponds, and Observation Hill while learning the basics of using maps and compasses to navigate. Youth will then practice their skills in an orienteering challenge.

Tu | \$24 | Noon-4 p.m.

Ages 10-14

Activity	Date	Location	Course #
Hike and Fish	June 16	Observation Park, 914 West Third Street	4420
Mountain Biking	July 21	Fairmont Park, 7291 Waseca Street	4421
Hike and Navigate	Aug. 25	Enger Park, 1601 Enger Tower Drive	4422



Develop Skills to Skate

This instructional ice skating program is for youngsters just starting out on skates. Class consists of developing basic skating skills. Skates and/or helmets are provided. Please arrive early to allow time to get skates on before lesson begins.

Ages: 5-10

Essentia Duluth Heritage Center,
120 S 30th Ave W

W | July 8-29 | 6:30-7:15 p.m. | \$40
Course #4555

55+ Activity Clubs

Activity Clubs are volunteer-organized groups that meet in park spaces and community centers throughout the city. Everybody aged 55+ is welcome to join an existing or create a new Activity Club. For more information on creating or participating in an Activity Club, please visit: duluthmn.gov/parks/seniors or contact the Senior Phone Line at 218-730-4310. Schedules are subject to change.

Activity	Location	Day	Time	Course #
500 Cards	Evergreen Senior Center, 5830 Grand Ave	Tu, F	12:15-3 p.m.	1968
BINGO	Evergreen Senior Center, 5830 Grand Ave	Th	12:15-3 p.m.	2226
Bone Builders	Evergreen Senior Center, 5830 Grand Ave	Tu, Th	9-10 a.m.	1969
Bridge	Portman Park, 4601 McCulloch St	M	Noon-3 p.m.	1965
Cribbage	Evergreen Senior Center, 5830 Grand Ave	M	6:30-8:30 p.m.	3143
Cribbage	Evergreen Senior Center, 5830 Grand Ave	W, Sa	1-4 p.m.	2809
Dominoes	Evergreen Senior Center, 5830 Grand Ave	M	10 a.m.-noon	1967
Hand and Foot	Evergreen Senior Center, 5830 Grand Ave	M	Noon-3 p.m.	1966
Men's Coffee and Chat	Portman Park, 4601 McCulloch St	W	9-11 a.m.	2031
Play/Learn to Play Mahjong	Evergreen Senior Center, 5830 Grand Ave	W	Noon-3 p.m.	1960



Gentle Yoga

Yoga offers many benefits to the mind and body! It can relieve stress and tension, calm the nervous system, improve balance, and help maintain mobility. Our yoga instructor will guide you through a relaxing flow to leave you feeling refreshed. No previous experience is necessary; all levels welcome! Adaptations can be made where possible. Registration required, no drop-ins are allowed.

Please arrive 15 minutes early and wear comfortable clothing. You may bring your own yoga mat, or the instructor will have some available. Optional items to bring include a water bottle, beach towel, and a throw pillow for comfort in lying positions.

Ages: 55+

Portman Community Center, 4601 McCulloch St

Session	Day	Dates	Time	Cost	Course #
Session 1	Tu	June 2-30	5:30-6:30 p.m.	\$25	4417
Session 2	Tu	July 14 - Aug. 18	5:30-6:30 p.m.	\$30	4418

Lafayette Community Center, 3016 Minnesota Ave

Session	Day	Dates	Time	Cost	Course #
Session 1	F	July 10, 17, 24, 31	9:30-10:30 a.m.	\$20	4416



2nd Halfers Afternoon Break

Looking for a social group? This is an informal get together to grow connections and friendships. Enjoy discussions on many topics. Coffee and tea are available. You do not need to register, you can just drop in at the Evergreen Senior Center's Conference Room.

Ages: 55+

Evergreen Community Center, 5830 Grand Ave
W | 2nd and 4th Wednesdays of the month |
3-4:30 p.m. | Free | Course #3583

Hospice 101

Medicare offers a hospice benefit. Learn how hospice can benefit patients and families and how to have the hospice conversation with those who may be eligible. There will be time for Q&A and discussion of myths surrounding hospice. Program is offered by St. Croix Hospice. Registration required.

Ages: 55+

Evergreen Community Center, 5830 Grand Ave
M | July 13 | 10-11 a.m. | Free | Course #4398

Seniors Get Savvy

Do you have questions about your new device? Want to learn how to best utilize your settings? How to access Facebook on your phone? Bring your questions and drop in for an informational Q&A session to help build your confidence in technology! Be sure to bring your devices and know your passwords. Please note, this is NOT a repair or virus removal service. This program can help with basic technology questions, but may not be able to answer all individual inquiries.

Ages: 55+

Evergreen Community Center, 5830 Grand Ave
Th | July 16 and Aug. 20 | 10 a.m.-noon | Free |
Course #3209

55+ Drivers Discount

Get 10% off eligible car insurance for 3 years! A certified instructor covers tips for driver and passenger safety, new laws, new vehicle technology, things that can influence our driving, and updates on traffic designs. Space is limited, registration required. To register, call Precision Driving Center at (320) 308-1400.

Ages: 55+

Evergreen Community Center, 5830 Grand Ave
F | Aug. 7 | 9 a.m. | \$24 | Course #4526

FACILITIES & PARKS

Facility	Address	Capacity	Handicap Accessible	Wi-Fi Available	Projection Screen	Microwave	Sink	Fridge	Stove	Ample Off-Street Parking	Limited Off-Street Parking	On-Site Event Host
City Center West/Evergreen Center	3501 Grand Ave.	50	Yes	Yes	Yes	Yes	Yes	Yes	Yes	No	Yes	No
Morgan Park Community Center	1242 88th Ave. W.	100	Yes	No	Yes	Yes	Yes	Yes	Yes	Yes	No	No
Harrison Community Center	3002 W. 3rd St.	50	Yes	No	Yes	Yes	Yes	Yes	Yes	No	Yes	No
Portman Community Center	4601 McCulloch St.	50	Yes	No	Yes	Yes	Yes	Yes	Yes	Yes	No	No
Lafayette Community Center	3026 Minnesota Ave.	50	Yes	No	No	Yes	Yes	Yes	Yes	No	Yes	No
Wade Stadium	101 N. 35th Ave. W.	400	Yes	No	No	No	No	No	No	Yes	No	Yes
Washington Center Gym	310 1st Ave. W.	100	Yes	No	No	No	No	No	No	No	Yes	No

Park	Address	Capacity	Private Events	Wedding Events	Pavilion	Gazebo	Stage	Stadium	Electricity	Grill(s)	Permanent Restroom (May - Oct)	Portable Toilet	Playground	Ample Off-Street Parking	Limited Off-Street Parking
Bayfront Playfront Park	350 Harbor Dr.	20	Yes	Yes	Yes	No	No	No	No	No	Yes	Yes	Yes	Yes	No
Brighton Beach Park	6202 Congdon Blvd.	50	Yes	Yes	Yes	No	No	No	No	Yes	No	Yes	Yes	Yes	No
Chambers Grove Park	13419 W. 3rd St.	100	Yes	Yes	Yes	No	No	No	Yes	Yes	Yes	No	Yes	Yes	No
Chester Park	1801 E. Skyline Pkwy.	200	Yes	Yes	No	No	Yes	No	Yes	Yes	No	Yes	Yes	Yes	No
Enger Park	1601 Enger Tower Dr.	100	Yes	Yes	No	Yes	No	No	Yes	Yes	Yes	No	No	No	Yes
Gichi-ode' Akiing Park	218 Canal Park Dr.	50	No	Yes	No	No	No	No	Yes	No	Yes	No	No	Yes	No
Lakewalk Plaza	504 Canal Park Dr.	50	No	Yes	No	No	No	No	No	No	No	Yes	No	Yes	No
Leif Erikson Park	1301 London Rd.	250	Yes	Yes	No	No	Yes	No	Yes	No	No	Yes	No	No	Yes
Lester Park	61 Lester River Rd.	250	Yes	Yes	Yes	No	No	No	Yes	Yes	No	Yes	Yes	No	Yes
Lincoln Park	2505 W. 3rd St.	100	Yes	Yes	Yes	No	Yes	No	Yes	Yes	Yes	Yes	Yes	No	Yes
Memorial Park	5315 Grand Ave.	50	Yes	Yes	Yes	No	No	No	No	Yes	No	Yes	Yes	No	Yes
Park Point Pavillion 1	4750 Minnesota Ave.	50	Yes	Yes	Yes	No	No	No	Yes	Yes	No	Yes	No	Yes	No
Park Point Pavillion 2	4750 Minnesota Ave.	50	Yes	Yes	Yes	No	No	No	Yes	Yes	No	Yes	No	Yes	No
Rose Garden	15 S. 13th Ave. E.	150	No	Yes	No	Yes	No	No	Yes	No	Yes	No	No	Yes	No
Sister Cities Park	218 Canal Park Dr.	50	No	Yes	No	No	No	No	No	No	Yes	No	No	Yes	No
Wade Stadium - Special Event	101 N 35th Ave W.	400	Yes	Yes	No	No	No	Yes	Yes	No	No	Yes	No	Yes	No

ATHLETIC FACILITIES

Athletic Facility	Address	Multi-Use Field	Youth Baseball	HS/College Baseball	HS Baseball Field	Softball Field	Pickleball	Tennis	Bocce Ball	Horseshoes	Basketball Court	Sand Volleyball	Lights	Scoreboard
Blackmer Park	8301 Beverly St.	Yes	Yes	No	No	No	No	No	No	No	No	No	No	No
Chester Park	1800 E. Skyline Pkwy.	Yes	No	No	No	No	No	No	No	No	No	No	No	No
Duluth Heights	33 W. Mulberry St.	Yes	No	No	No	No	No	No	No	No	No	No	No	No
Helmer Carlson (Basswood Field)	900 N. Basswood Ave.	No	Yes	No	No	Yes	No	No	No	No	No	No	No	No
Lincoln Park	25 Ave. W. & W. 5th St.	Yes	No	No	No	No	Yes	No	No	No	Yes	No	No	No
Irving Park	20 S. 57th Ave W.	Yes	No	No	No	No	No	No	No	No	No	No	No	No
Merritt Park	4017 W. 7th St.	Yes	Yes	No	No	Yes	Yes	No	No	No	Yes	No	No	No
Wheeler Complex	35th Ave. W. & Grand Ave.	No	No	No	No	No	Yes	Yes	Yes	Yes	Yes	Yes	No	No
Wheeler Ball Field 1	35th Ave W. & Grand Ave.	No	Yes	No	No	Yes	No	No	No	No	No	No	Yes	Yes
Wheeler Ball Field 2	35th Ave W. & Grand Ave.	No	Yes	No	No	Yes	No	No	No	No	No	No	Yes	Yes
Wheeler Ball Field 3	35th Ave W. & Grand Ave.	No	Yes	No	No	Yes	No	No	No	No	No	No	Yes	Yes
Wheeler Ball Field 4	35th Ave W. & Grand Ave.	No	Yes	No	No	Yes	No	No	No	No	No	No	Yes	Yes
Wheeler Ball Field 5	35th Ave W. & Grand Ave.	No	No	No	Yes	No	No	No	No	No	No	No	Yes	Yes
Wade Ball Field 6	35th Ave W. & 1st St.	No	Yes	No	No	Yes	No	No	No	No	No	No	Yes	Yes
Wade Ball Field 7	35th Ave W. & 1st St.	No	Yes	No	No	Yes	No	No	No	No	No	No	Yes	Yes
Wade Stadium	35th Ave W. & 1st St.	No	No	Yes	No	No	No	No	No	No	No	No	Yes	Yes
Woodland Park	3211 Allendale Ave.	Yes	Yes	No	No	Yes	Yes	Yes	No	No	No	No	No	No

The following buildings are managed by third parties on behalf of Parks & Recreation.

Please contact them directly for assistance.

- [Bayfront Family Center](#) • 218.727.4344 • bayfrontfestivalpark.com
- [Chester Bowl Chalet](#) • 218.724.9832 • chesterbowl.org
- [Central Hillside Community Center](#) • 218.727.5372 • [jimonette@1roofhousing.org](mailto:jimmonette@1roofhousing.org)
- [Hartley Nature Center](#) • 218.724.6735 • hartleynature.org
- [Gary New Duluth Recreation Center](#) • 218.464.1930 • gnd.community
- [Lester-Amity Chalet](#) • 218.721.8241 • duluthxc.com
- [Park Point Beach House](#) • parkpointbeachhouse.com
- [Woodland Community Center](#) • 218.722.4745 • lakesuperiorymca.org



Evergreen Center



Harrison Community Center



Lafayette Community Center



Morgan Park Community Center



Portman Community Center



Wade Stadium



Washington Center Gym



Bayfront Playfront Park



Brighton Beach



Chambers Grove Park



Chester Park



Enger Park



Duluth Parks & Recreation



Gichi-Ode' Akiing (Lake Place Park)



Lakewalk Plaza



Leif Erikson Park



Lester Park



Lincoln Park



Memorial Park



Park Point Pavilion



Rose Garden



Sister Cities Park

Parks Planning

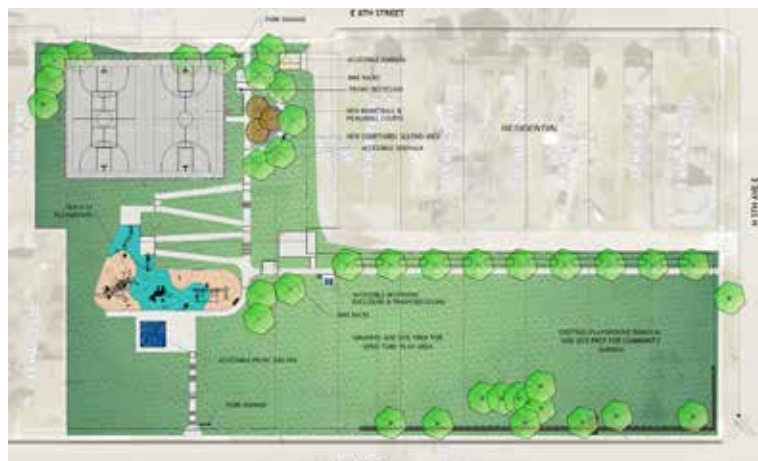
Parks & Recreation planning, design, construction, and public engagement efforts related to parks, park facilities, trails, and natural resources is led by our Stewardship Team. Stewardship projects aim to improve park access and recreational experiences for our citizens, reduce conflicts, enhance resiliency, and protect our natural resources. To learn more about active parks planning, design, and construction projects, please visit our Progress in the Parks page at: duluthmn.gov/parks/parks-planning/progress-in-the-park

Guiding Documents

Parks & Recreation decisions and services are guided and informed by a series of reference documents, such as mini-master plans, natural resource management plans, and ordinances as approved by the Parks and Recreation Commission and/or City Council. To learn more about the background, public engagement processes, design approach, and recommendations related to specific parks and natural areas, please visit our Parks Planning Library and Duluth Natural Areas Programs pages at duluthmn.gov/parks/parks-planning/parks-planning-library/ and duluthmn.gov/parks/natural-resources/dnap

Project Highlight - Hillside Sport Court Park

Major improvements will be coming to Hillside Sport Court Park this summer! The City of Duluth and Rachel Contracting will implement a series of park improvements including enhancing site connectivity and accessibility, constructing a pavilion and picnic area, renewing the sport court, replacing the playground, improving the open green space, providing space for a future community garden, and repairing or replacing other park assets such as fencing, bike racks, signage, gates, and vegetation. In advance of the larger park improvement project, the City's Public Works and Utilities team will be repairing and replacing sanitary lines within the park. This will include significant earthwork and is expected to take place during the months of April and May, with the park improvement project to follow in June. This project will transform Hillside Sport Court Park into a modern, community-oriented space for all to enjoy!





duluthmn.gov/parks