



# DULUTH INTERNATIONAL AIRPORT

Director of Airports: Brian Ryks  
4701 GRINDEN DRIVE - DULUTH INTERNATIONAL AIRPORT  
DULUTH, MINNESOTA 55811

FAA AIP No. - 3-27-0024-48-10  
RS&H PROJ. No. - 213.1882.091  
CITY OF DULUTH BID No. - 12-4403

## DULUTH AIRPORT AUTHORITY BOARD OF DIRECTORS

- President: Robert C. Pearson
- Vice President: Michael Lunstrom
- Secretary: Roger Wedin
- John Eagleton
- Sue Ross
- Kenneth Stromquist



## NEW PASSENGER TERMINAL BID PACKAGE 2C - BID DOCUMENTS WAYFINDING SIGNAGE AND HAZARDOUS MATERIAL ABATEMENT

SEPTEMBER 17, 2012



Construction Managers:  
**KRAUS-ANDERSON.**  
3716 Oneota Street  
Duluth MN 55807  
TEL: (218) 722-3775 / FAX: (218) 722-3778



Architects and Civil Engineers:  
**REYNOLDS, SMITH & HILLS, INC.**  
4525 Airport Approach Road,  
Duluth MN 55811  
TEL: (218) 722-1227 / FAX: (218) 722-1052

Interior Architects:  
**SJA ARCHITECTS**  
11 E Superior Street Suite 340,  
Duluth MN 55802  
TEL: (218) 724-8578 / FAX: (218) 724-8717

Structural Engineers:  
**MBJ CONSULTING ENG.**  
501 Lake Avenue South, Suite 300,  
Duluth MN 55802  
TEL: (218) 722-1056 / FAX: (218) 722-9306

M/E/P/FP Engineers:  
**COSENTINI ASSOCIATES INC.**  
1 South Wacker Drive, 37th Floor,  
Chicago IL 60606  
TEL: (312) 201-7408 / FAX: (312) 201-0031

Baggage Handling Systems Consultants:  
**BNP ASSOCIATES INC.**  
101 East Ridge Office Park, Suite 103,  
Danbury CT 06810  
TEL: (203) 792-3000 / FAX: (203) 792-4900

Public Address Consultants:  
**SHEN, MILSOM & WILKE, LLC**  
2 N. Riverside Plaza #1460  
Chicago IL 60606  
TEL: (312) 559-4585 / FAX (312) 559-5393



SIGNAGE SCHEDULE									
EXTERIOR WAYFINDING									
Sign No.	Sign Type	Face	Arrow	Symbol	Text	Plan Sht.	Ref.	Sign Type Ref.	Remarks
E/01	E.1.2	A	-	-	(Welcome to) Duluth International Airport	G100		G200	
E/02	E.4	A left	-	-	LEFT LANE Parking	G100		G201	
"	"	A right	-	-	RIGHT LANE Cell Phone Lot / Terminal / Rental Return				
E/03	E.5.1	A	↘	-	Cell Phone Waiting Lot	G100		G201	
E/04	E.2L	A	↙		Parking	G100		G201	
E/05	E.1.2	A left	↙		Commercial Lane/Taxis/Buses/Limos/Shuttles	G100		G201	
"	E.1.1	A right	↘	-	To Terminal / Rental Return				
E/06	E.3	A	→	-	Cargo / Receiving	G100		G202	Affix R5.1A to back
E/07	E.5.2	A	↙		Commercial Lane/Taxis/Buses/Limos/Shuttles	G100		G201	
E/08	E.1.1	A left	↙		Economy Parking	G100		G201	Provide Removable Tempory "Long Term" Panel made of like materials to cover "Economy"
"	"	A right	↘		Premium Parking				Provide Removable Tempory "Short Term" Panel made of like materials to cover "Premium"
E/09	E.6	A	-		Premuim Parking /First 20 Minutes Free/Each 1/2 Hour \$1.00/Daily Max \$15.00/Weekly Max \$54.00				Verify Current Parking Rates. Provide Removable Tempory "Short Term" Panel made of like materials to cover "Premium"
E/10	E.3	A	→	-	Rental Return	G100		G202	Affix R5.1A to back
E/11	E.6	A	-		Economy Parking/First 20 Minutes Free/Each Hour \$2.00/Daily Max \$9.00/Weekly Max \$45.00				Verify Current Parking Rates. Provide Removable Tempory "Long Term" Panel made of like materials to cover "Economy"
E/12	E.6	A	-		Economy Parking/First 20 Minutes Free/Each Hour \$2.00/Daily Max \$9.00/Weekly Max \$45.00				Verify Current Parking Rates. Provide Removable Tempory "Long Term" Panel made of like materials to cover "Economy"
E/13	E.2L	A	↙		Economy Parking	G100		G201	Provide Removable Tempory "Long Term" Panel made of like materials to cover "Economy"
E/14	E.4	A left	↓	-	LEFT LANE Return to Terminal	G100		G201	
"	"	A right	-	-	RIGHT LANE Exit Airport				
E/15	E.5.1	A	-	-	Return to Terminal	G100		G202	Affix R5.1A to back
E/16	E.3	A	-	-	Thank you for visiting Duluth International Airport	G100		G203	Affix R5.1A to back
LED 1	Programmable LED Sign- Daktronics Model AF-3200-32X96-8-A					A724	To be installed on revenue control canopy		
LED 2	Programmable LED Sign- Daktronics Model AF-3200-32X96-8-A					A724	To be installed on revenue control canopy		
LED 3	Programmable LED Sign- Daktronics Model AF-3200-32X96-8-A					A724	To be installed on revenue control canopy		

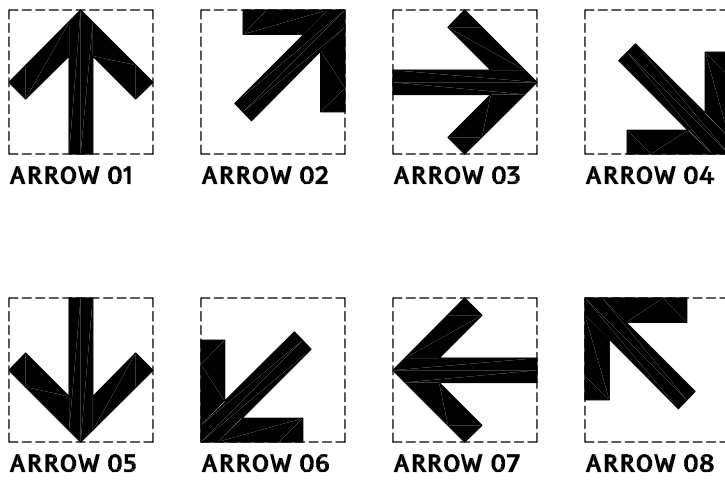
1 EXTERIOR WAYFINDING SIGNAGE SCHEDULE

AaBbCcDdEeFfGgHhIijj  
KkLlMmNnOoPpQqRrSs  
TtUu VvWw XxYyZz  
&1234567890

NOTE: TYPE FACE ON  
WAYFINDING SIGNAGE  
SHALL BE TIRESIAS  
SIGNFONT AND BE WHITE  
UNLESS NOTED OTHERWISE

2 TYPE FACE LEGEND

6" = 1'-0"



NOTE: DASHED BOX SHOWN  
AROUND ARROW SYMBOLS  
IS FOR ALIGNMENT  
PURPOSES ONLY

4 ARROW SYMBOLS

6" = 1'-0"



3 SYMBOL LEGEND

6" = 1'-0"



Reynolds, Smith and Hills, Inc.  
4525 Airport Approach Rd, Ste A  
Duluth, Minnesota 55811  
218-722-1227 Fax: 218-722-1052  
www.rsandh.com



DULUTH  
INTERNATIONAL  
AIRPORT  
DULUTH, MN

NEW PASSENGER  
TERMINAL

CONSULTANTS

Interior Architects:  
**SJA ARCHITECTS**  
11 E Superior Street Suite 340, Duluth MN 55802  
TEL: (218) 724-8578 / FAX: (218) 724-8717

Structural Engineers:  
**MBJ CONSULTING ENG.**  
501 Lake Avenue South, Suite 300, Duluth MN 55802  
TEL: (218) 722-1056 / FAX: (218) 722-8306

M/E/P/F Engineers:  
**COSENTINI ASSOCIATES INC.**  
1 South Wacker Drive, 37th Floor, Chicago IL 60606  
TEL: (312) 201-7408 / FAX: (312) 201-0031

Baggage Handling Systems Consultants:  
**BNP ASSOCIATES INC.**  
101 East Ridge Office Park, Suite 103, Danbury CT 06810  
TEL: (203) 792-3000 / FAX: (203) 792-4900

Landscaping Consultants:  
**APPOLD DESIGN**  
2432 East First Street, Duluth MN 55812  
TEL: (218) 591-5079

ARCHITECTURAL CERTIFICATION  
I hereby certify that the architectural plans,  
specifications or report was prepared by me  
or under my direct supervision and that I am  
a duly licensed Professional Architect under  
the laws of the State of Minnesota.

Print Name: Mark Ip

Signature:

Date: 06-03-10 Reg. No.: 46001

REVISIONS

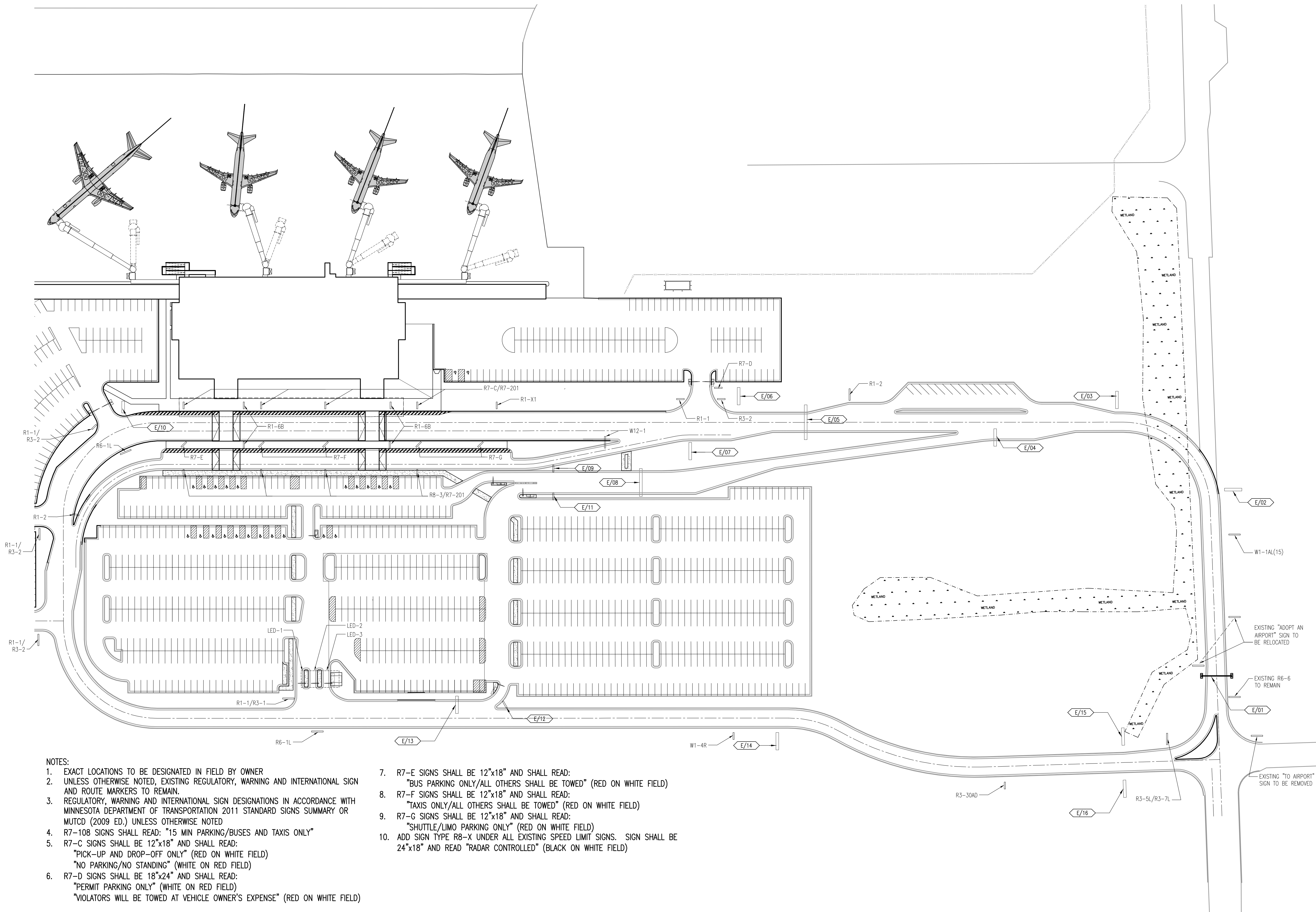
NO.	DESCRIPTION	DATE
	BID PACKAGE 2B	8.23.11
	BP2B CONFORMANCE	10.21.11
1	CLARIFICATION 170	11.3.11
	BID PACKAGE 2C	2.10.12
2	BP2C ADDENDUM 2	3.2.12
	BP2C CONFORMANCE	3.20.12
	BP2C ISSUE FOR REBID	8.1.12

DATE ISSUED: 08-01-12  
REVIEWED BY: TC  
DRAWN BY: MKG/MI  
DESIGNED BY: TC

AEP PROJECT NUMBER  
213-1882-091  
© 2010 REYNOLDS, SMITH AND HILLS INC.  
SHEET TITLE  
TYPOGRAPHIC  
STANDARDS &  
SYMBOL SCHEDULE

SHEET NUMBER  
G001

BID PACKAGE 2C  
ISSUED FOR REBID



NOTES:

- EXACT LOCATIONS TO BE DESIGNATED IN FIELD BY OWNER
- UNLESS OTHERWISE NOTED, EXISTING REGULATORY, WARNING AND INTERNATIONAL SIGN AND ROUTE MARKERS TO REMAIN.
- REGULATORY, WARNING AND INTERNATIONAL SIGN DESIGNATIONS IN ACCORDANCE WITH MINNESOTA DEPARTMENT OF TRANSPORTATION 2011 STANDARD SIGNS SUMMARY OR MUTCD (2009 ED.) UNLESS OTHERWISE NOTED
- R7-108 SIGNS SHALL READ: "15 MIN PARKING/BUSES AND TAXIS ONLY"
- R7-C SIGNS SHALL BE 12"x18" AND SHALL READ:  
"PICK-UP AND DROP-OFF ONLY" (RED ON WHITE FIELD)  
"NO PARKING/NO STANDING" (WHITE ON RED FIELD)
- R7-D SIGNS SHALL BE 18"x24" AND SHALL READ:  
"PERMIT PARKING ONLY" (WHITE ON RED FIELD)  
"VIOLATORS WILL BE TOWED AT VEHICLE OWNER'S EXPENSE" (RED ON WHITE FIELD)
- R7-E SIGNS SHALL BE 12"x18" AND SHALL READ:  
"BUS PARKING ONLY/ALL OTHERS SHALL BE TOWED" (RED ON WHITE FIELD)
- R7-F SIGNS SHALL BE 12"x18" AND SHALL READ:  
"TAXIS ONLY/ALL OTHERS SHALL BE TOWED" (RED ON WHITE FIELD)
- R7-G SIGNS SHALL BE 12"x18" AND SHALL READ:  
"SHUTTLE/LIMO PARKING ONLY" (RED ON WHITE FIELD)
- ADD SIGN TYPE R8-X UNDER ALL EXISTING SPEED LIMIT SIGNS. SIGN SHALL BE 24"x18" AND READ "RADAR CONTROLLED" (BLACK ON WHITE FIELD)

REVISIONS

NO.	DESCRIPTION	DATE
	BID PACKAGE 2B	8.23.11
	BID PACKAGE 2C	2.10.12
1	BP2C ADDENDUM 2	3.2.12
2	BP2C ADDENDUM 3	3.9.12
	BP2C CONFORMANCE	3.20.12
	BP2C ISSUE FOR REBID	8.1.12

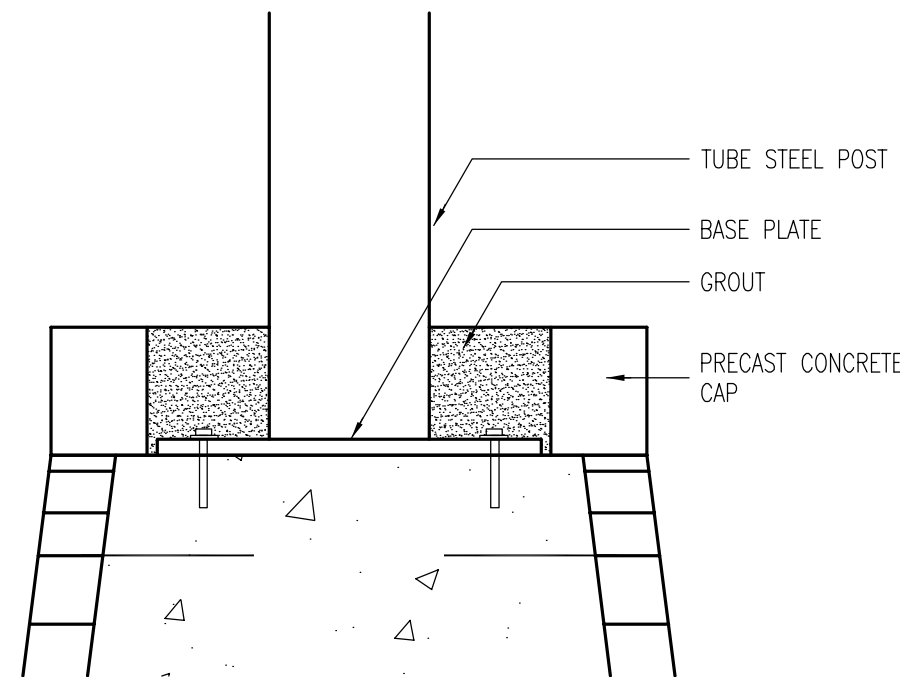
DATE ISSUED: 08-01-12  
REVIEWED BY: TC  
DRAWN BY: MKG/MI  
DESIGNED BY: TC

AEP PROJECT NUMBER  
**213-1882-091**  
© 2010 REYNOLDS, SMITH AND HILLS INC.

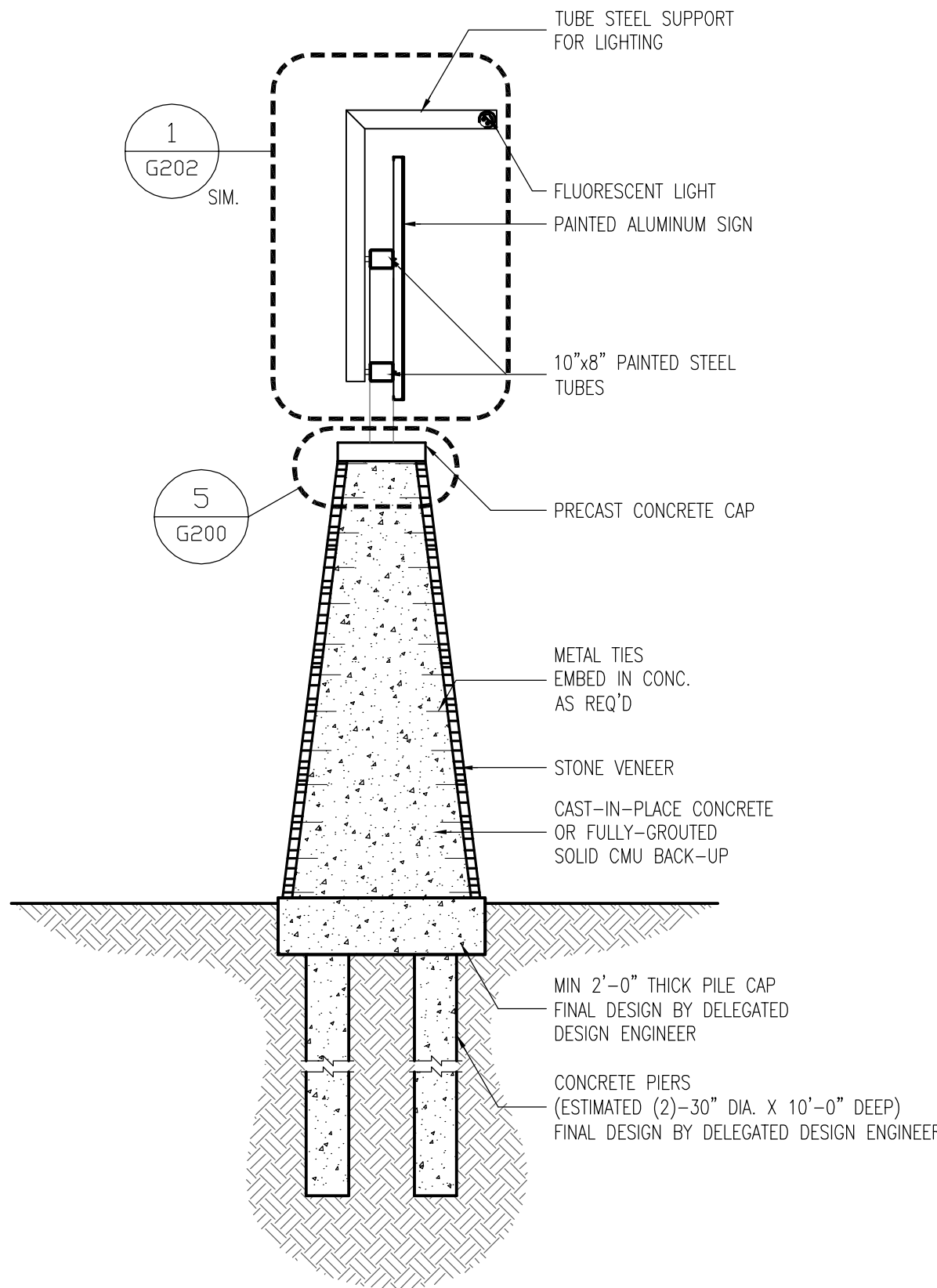
**SHEET TITLE**  
**SITE SIGNAGE  
PLAN**

**SHEET NUMBER**  
**G100**

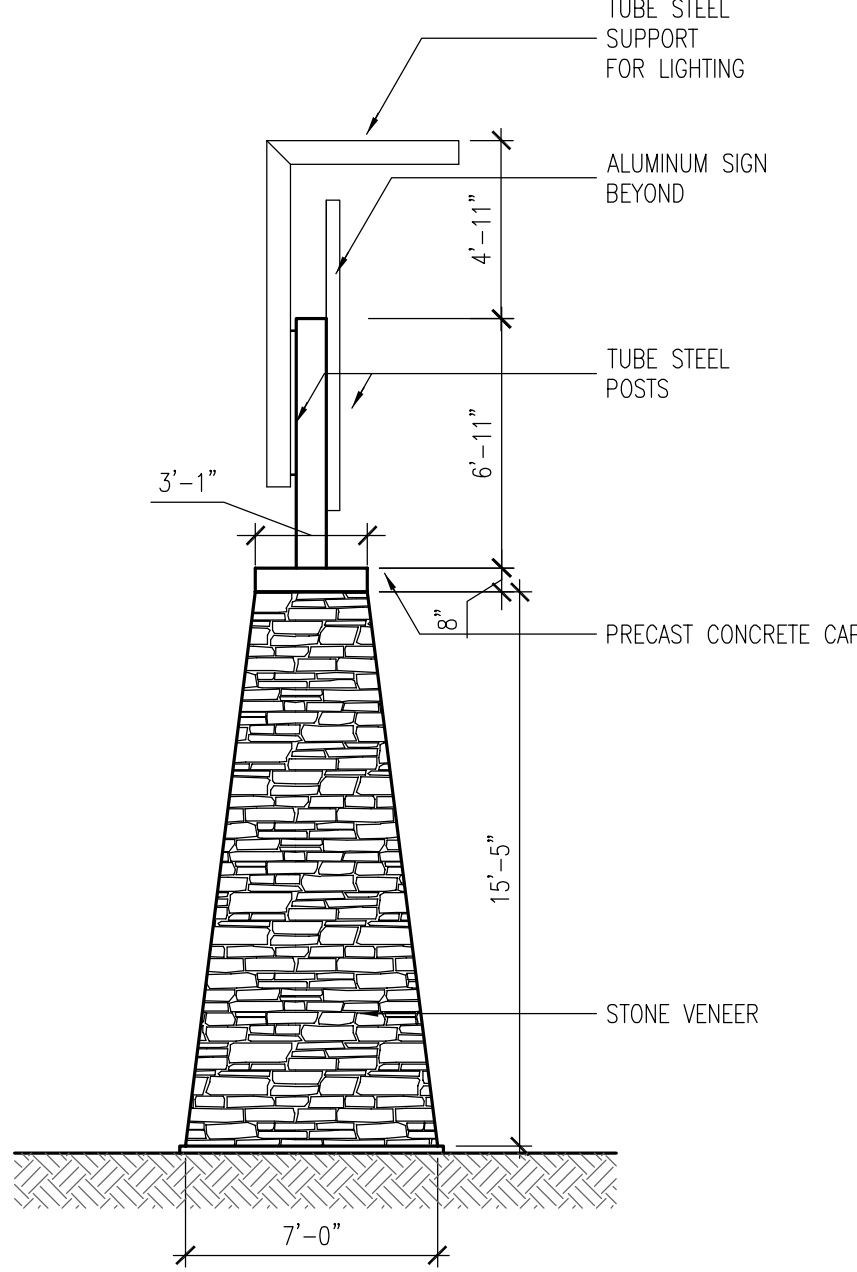
**BID PACKAGE 2C  
ISSUED FOR REBID**



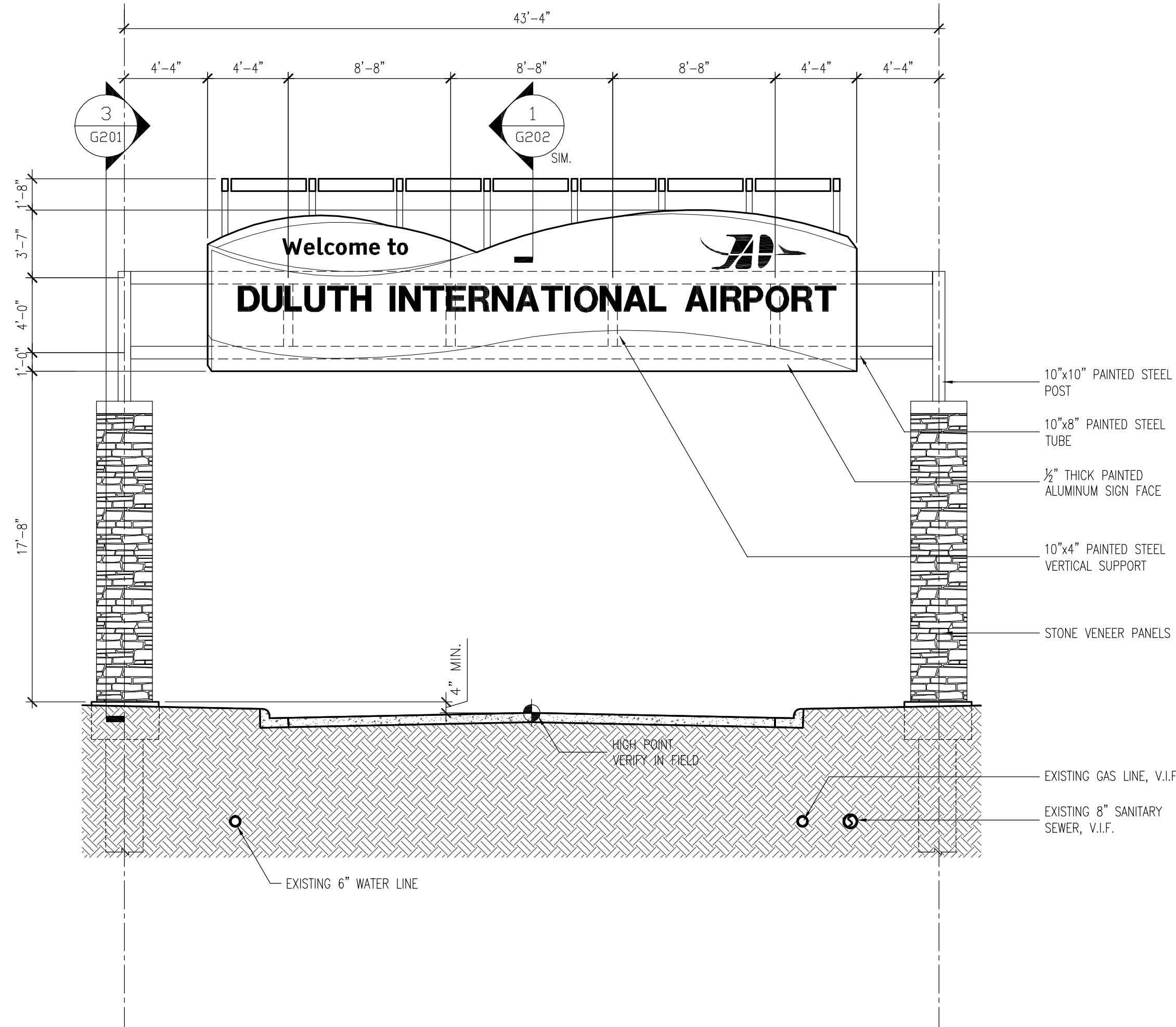
5 SECTION DETAIL AT CAP  
1" = 1'-0"



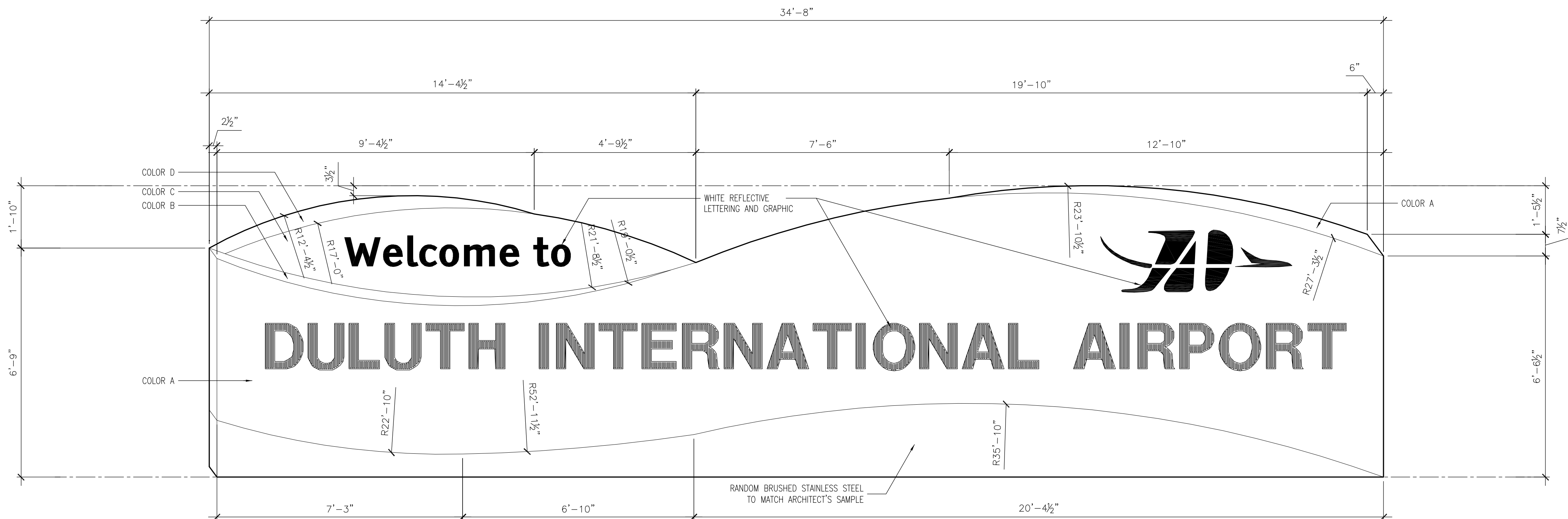
3 SIGN TYPE E.1 SECTION  
3/16" = 1'-0"



2 SIGN TYPE E.1 ELEVATION  
3/16" = 1'-0"



- NOTES:
1. MINIMUM 1/4" WALL THICKNESS ON ALL HSS MEMBERS.
  2. DESIGN OF ALL HSS CONNECTIONS BY DELEGATED DESIGN ENGINEER.
  3. DESIGN OF CONNECTION BETWEEN ALUMINUM SIGN TO STEEL HSS(DISSIMILAR METALS) BY DELEGATED DESIGN ENGINEER.



COLOR SCHEDULE:  
COLOR NO. A - PANTONE 7462C  
COLOR NO. B - PANTONE 7468C  
COLOR NO. C - PANTONE 5493C  
COLOR NO. D - PANTONE 551C

4 SIGN TYPE E.1 FACE  
1/2" = 1'-0"

**RS&H**  
IMPROVING YOUR WORLD

Reynolds, Smith and Hills, Inc.  
4525 Airport Approach Rd, Ste A  
Duluth, Minnesota 55811  
218-722-1227 Fax: 218-722-1052  
www.rsandh.com

**DULUTH AIRPORT  
AUTHORITY**

**DULUTH  
INTERNATIONAL  
AIRPORT  
DULUTH, MN**

**NEW PASSENGER  
TERMINAL**

**CONSULTANTS**  
Interior Architects:  
**SJA ARCHITECTS**  
11 E Superior Street Suite 340, Duluth MN 55802  
TEL: (218) 724-8578 / FAX: (218) 724-8717  
Structural Engineers:  
**MBJ CONSULTING ENG.**  
501 Lake Avenue South, Suite 300, Duluth MN 55802  
TEL: (218) 722-1056 / FAX: (218) 722-8306  
ME/P/FP Engineers:  
**COSENTINI ASSOCIATES INC.**  
1 South Wacker Drive, 37th Floor, Chicago IL 60606  
TEL: (312) 201-7408 / FAX: (312) 201-0031  
Baggage Handling Systems Consultants:  
**BNP ASSOCIATES INC.**  
101 East Ridge Office Park, Suite 103, Danbury CT 06810  
TEL: (203) 792-3000 / FAX: (203) 792-4900  
Landscaping Consultants:  
**APPOLO DESIGN**  
2432 East First Street, Duluth MN 55812  
TEL: (218) 591-5079

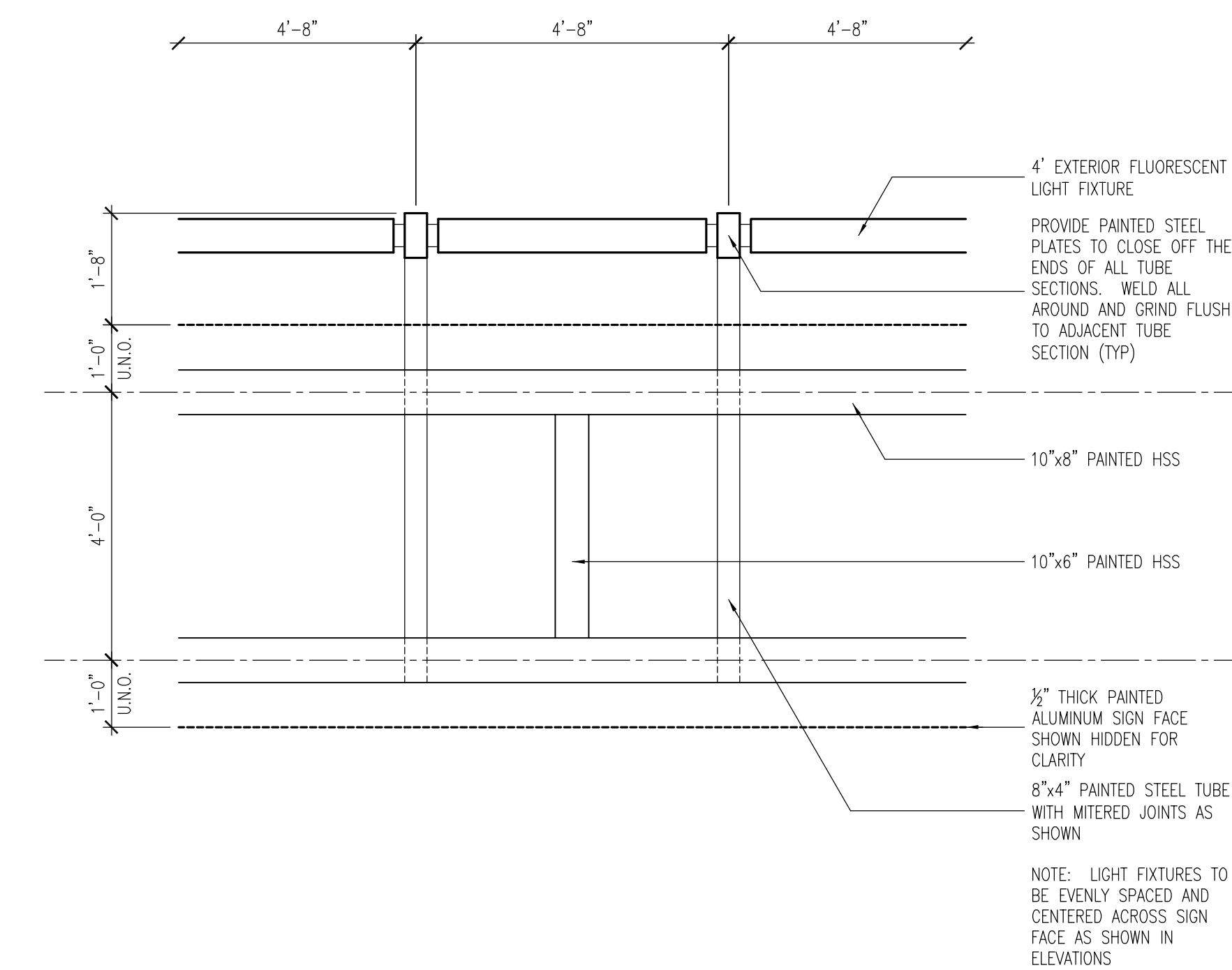
REVISIONS		
NO.	DESCRIPTION	DATE
BID PACKAGE 2B		8.23.11
BID PACKAGE 2C		8.10.12
BP2C CONFORMANCE		3.20.12
BP2C ISSUE FOR REBID		8.1.12

DATE ISSUED: 08-01-12  
REVIEWED BY: TC  
DRAWN BY: MKG/MI  
DESIGNED BY: TC  
AEP PROJECT NUMBER  
213-1882-091  
© 2010 REYNOLDS, SMITH AND HILLS INC.

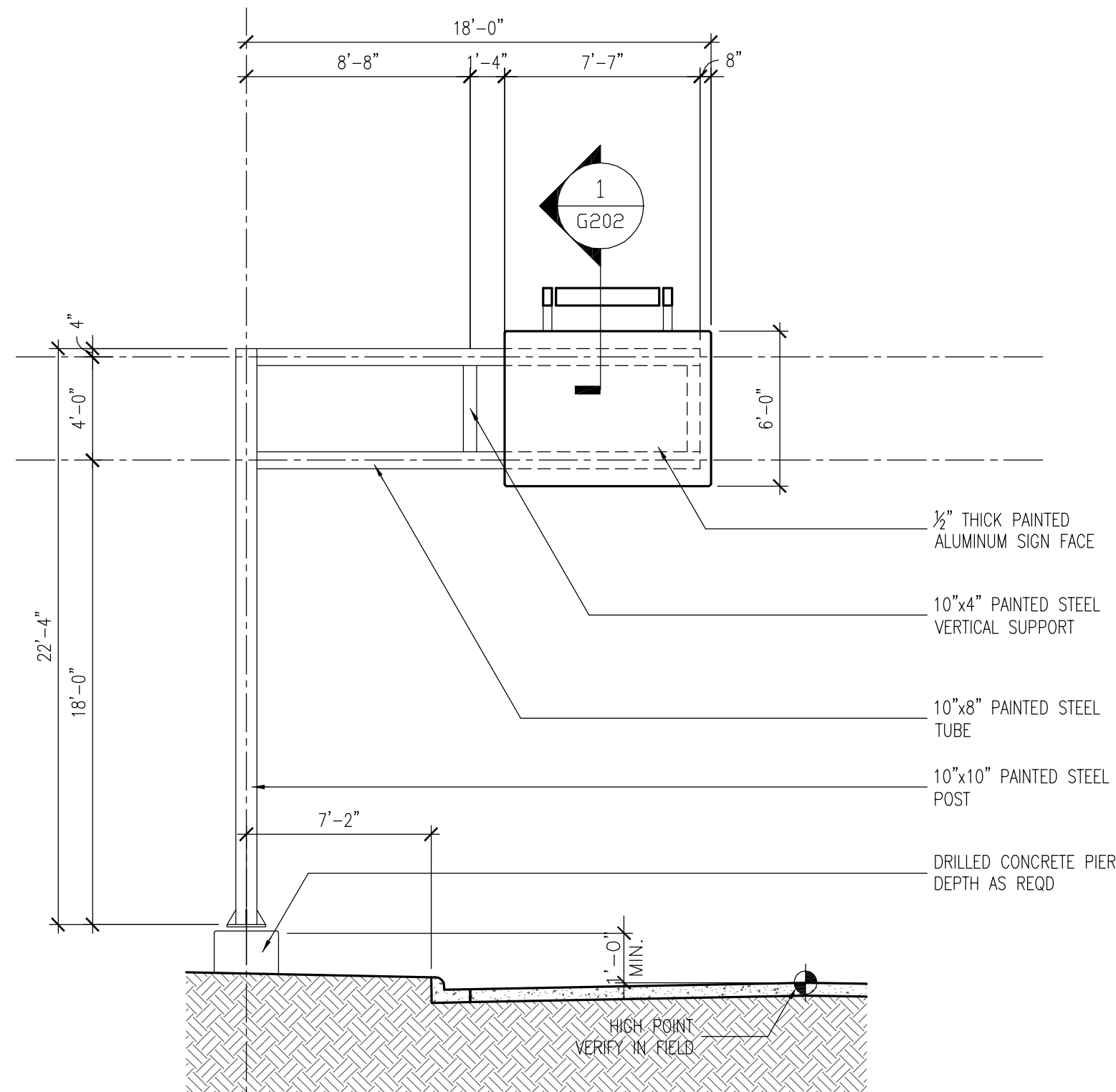
SHEET TITLE  
**SIGNAGE  
TYPES &  
DETAILS**

SHEET NUMBER  
**G200**

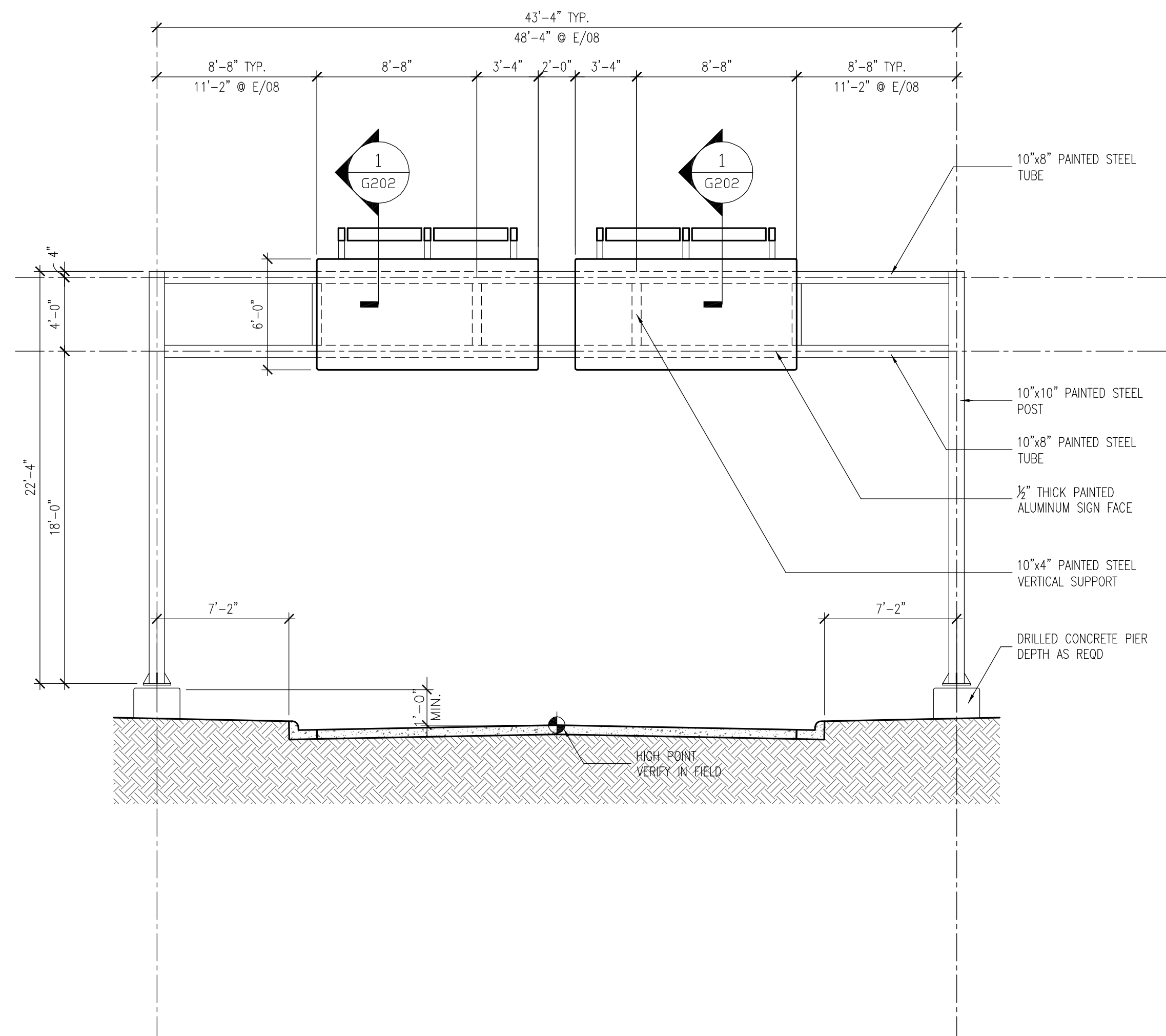
**BID PACKAGE 2C  
ISSUED FOR REBID**



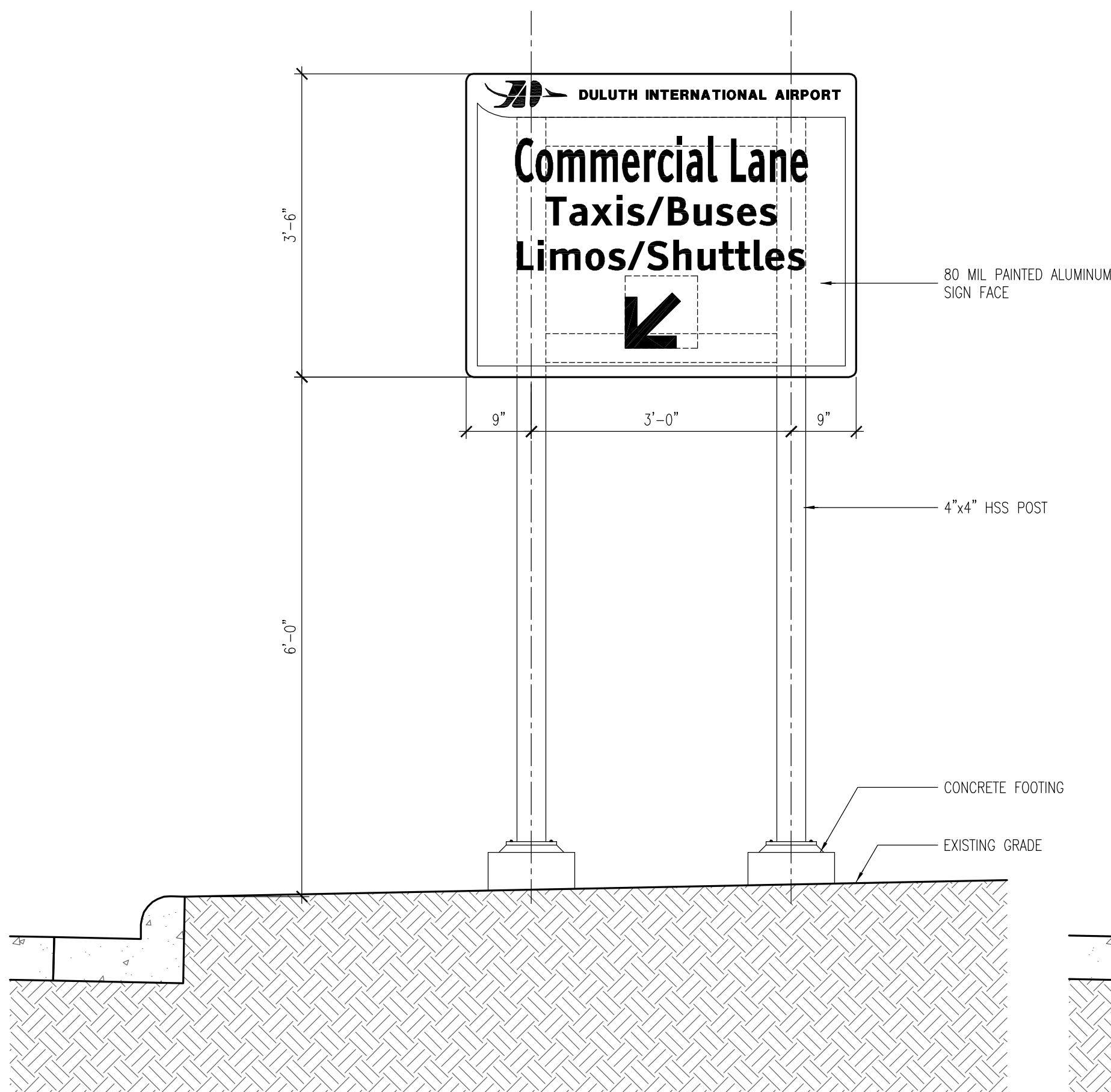
**5** ROADWAY SIGN LIGHT FIXTURE DETAIL  
1/2" = 1'-0"



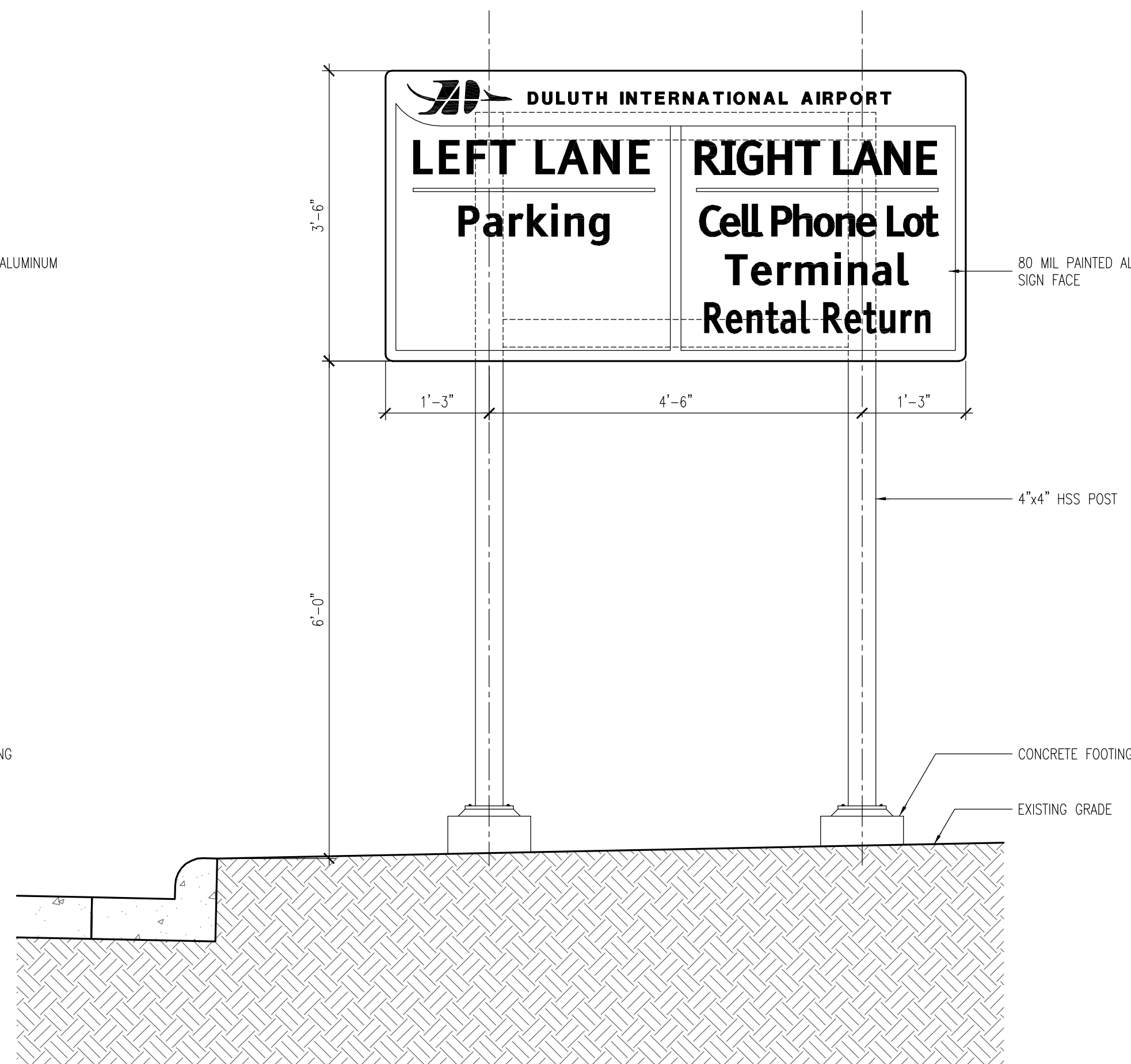
**3** SIGN TYPE E.2(L) ELEVATION  
3/16" = 1'-0"



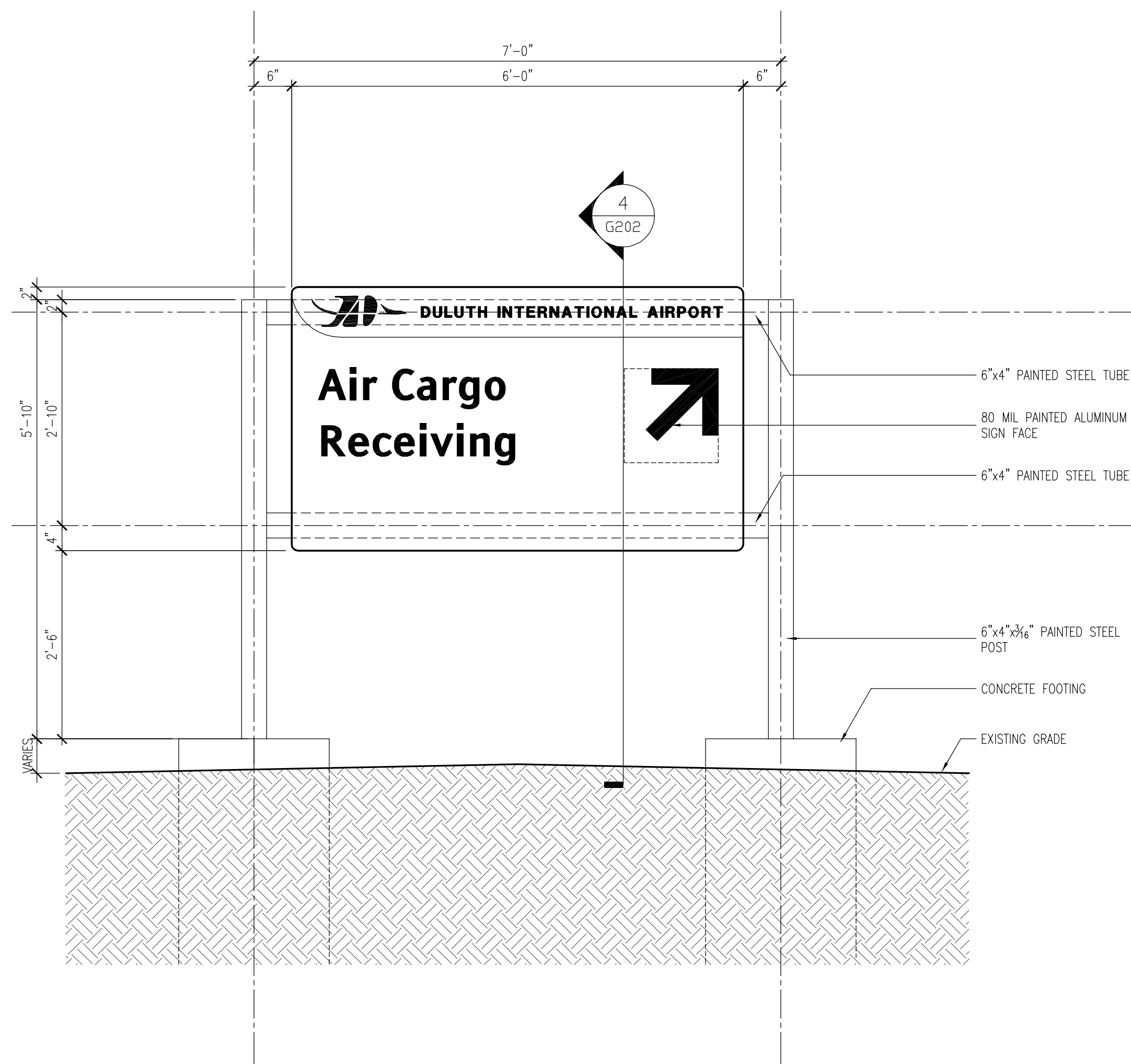
**1** SIGN TYPE E.1.1 & E.1.2 ELEVATION  
3/16" = 1'-0"



**6** SIGN TYPE E.5.1, E.5.2 & E.6 ELEVATION  
3/4" = 1'-0"



**4** SIGN TYPE E.4 ELEVATION  
3/4" = 1'-0"



**2** SIGN TYPE E.3 ELEVATION  
3/4" = 1'-0"

**RS&H**  
IMPROVING YOUR WORLD

Reynolds, Smith and Hills, Inc.  
4525 Airport Approach Rd, Ste A  
Duluth, Minnesota 55811  
218-722-1227 Fax: 218-722-1052  
www.rsandh.com

**DULUTH AIRPORT  
AUTHORITY**

**DULUTH  
INTERNATIONAL  
AIRPORT  
DULUTH, MN**

**NEW PASSENGER  
TERMINAL**

**CONSULTANTS**

Interior Architects:  
**SJA ARCHITECTS**  
11 E Superior Street Suite 340, Duluth MN 55802  
TEL: (218) 724-8578 / FAX: (218) 724-8717

Structural Engineers:  
**MBJ CONSULTING ENG.**  
501 Lake Avenue South, Suite 300, Duluth MN 55802  
TEL: (218) 722-1056 / FAX: (218) 722-8306

M/E/P/FP Engineers:  
**COSENTINI ASSOCIATES INC.**  
1 South Wacker Drive, 37th Floor, Chicago IL 60606  
TEL: (312) 201-7408 / FAX: (312) 201-0031

Baggage Handling Systems Consultants:  
**BNP ASSOCIATES INC.**  
101 East Ridge Office Park, Suite 103, Danbury CT 06810  
TEL: (203) 792-3000 / FAX: (203) 792-4900

Landscaping Consultants:  
**APPOLO DESIGN**  
2432 East First Street, Duluth MN 55812  
TEL: (218) 591-5079

**REVISIONS**

NO.	DESCRIPTION	DATE
BID PACKAGE 2B		8.23.11
BID PACKAGE 2C		8.10.12
1	BP2C ADDENDUM 2	3.2.12
	BP2C CONFORMANCE	3.20.12
	BP2C ISSUE FOR REBID	8.1.12

DATE ISSUED: 08-01-12  
REVIEWED BY: TC  
DRAWN BY: MKG/MI  
DESIGNED BY: TC

AEP PROJECT NUMBER  
**213-1882-091**

© 2010 REYNOLDS, SMITH AND HILLS INC.

**SHEET TITLE**

**SIGNAGE  
TYPES &  
DETAILS**

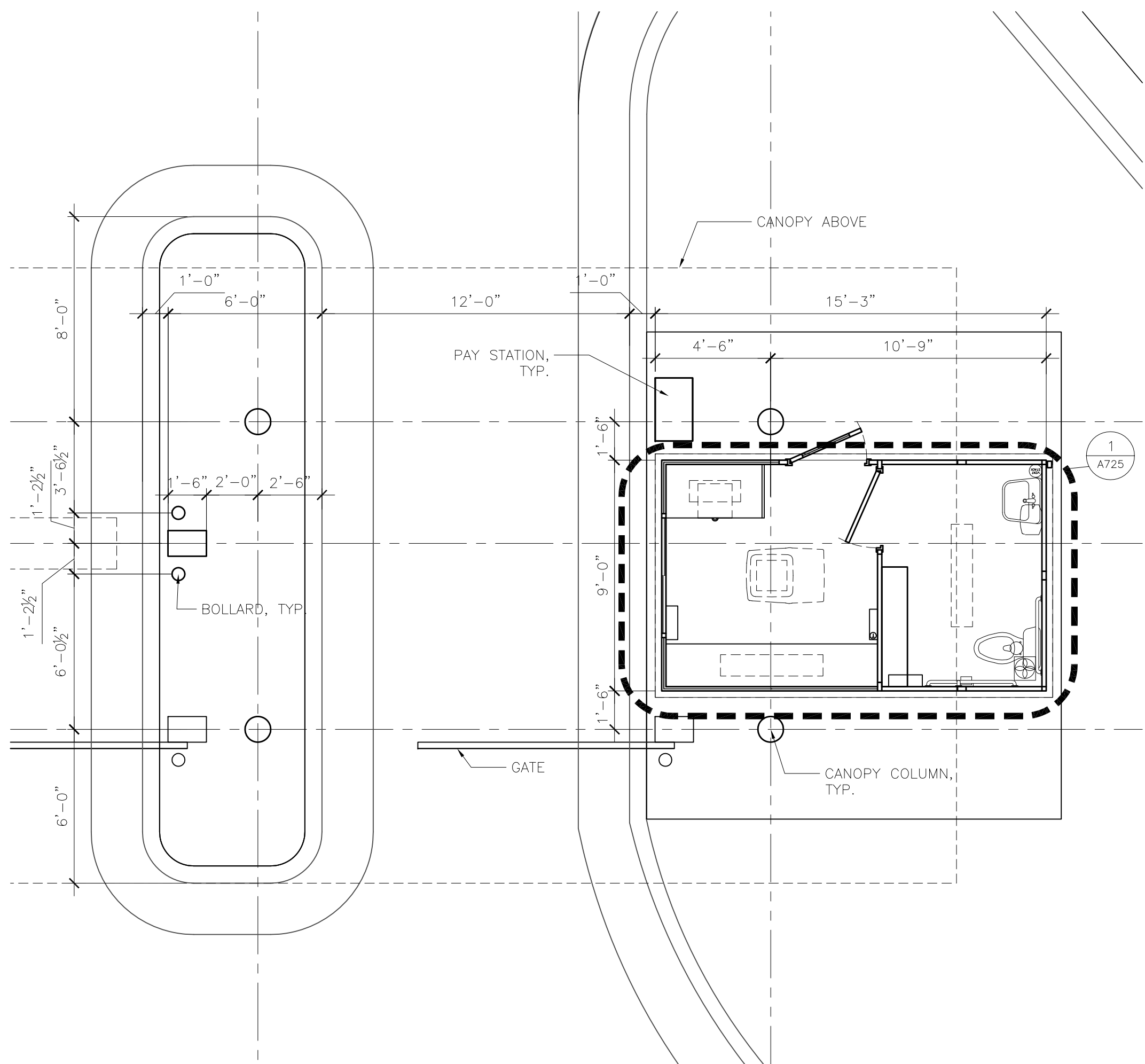
**SHEET NUMBER**

**G201**

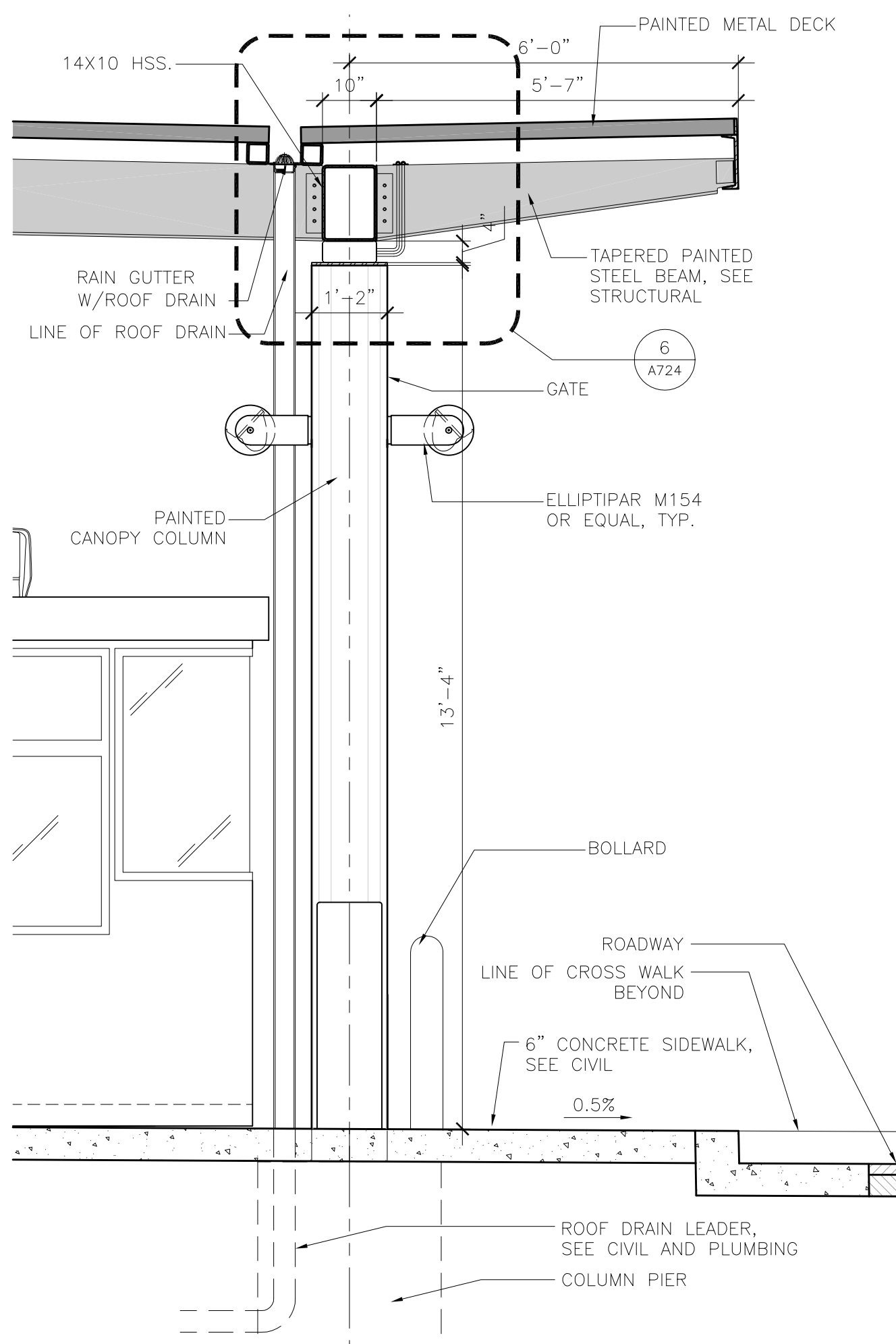
**BID PACKAGE 2C  
ISSUED FOR REBID**



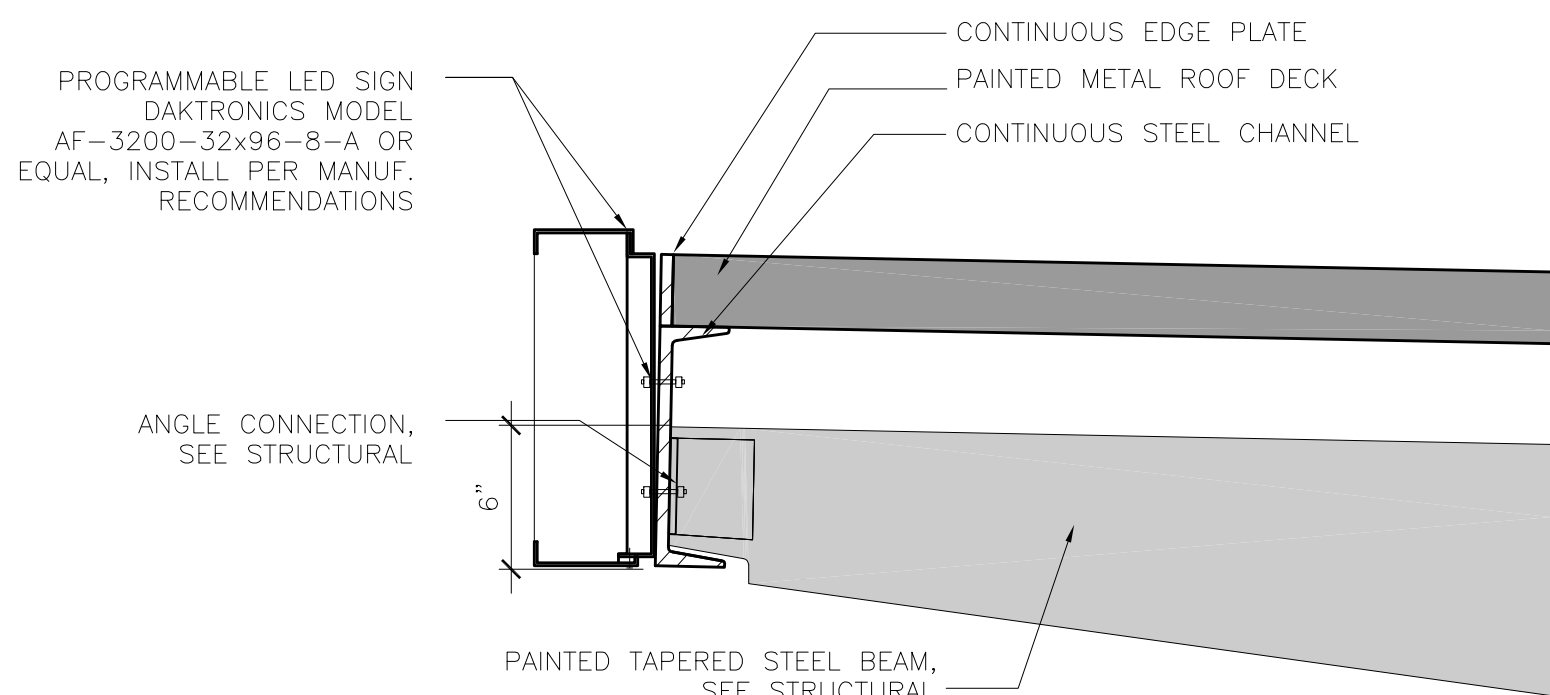




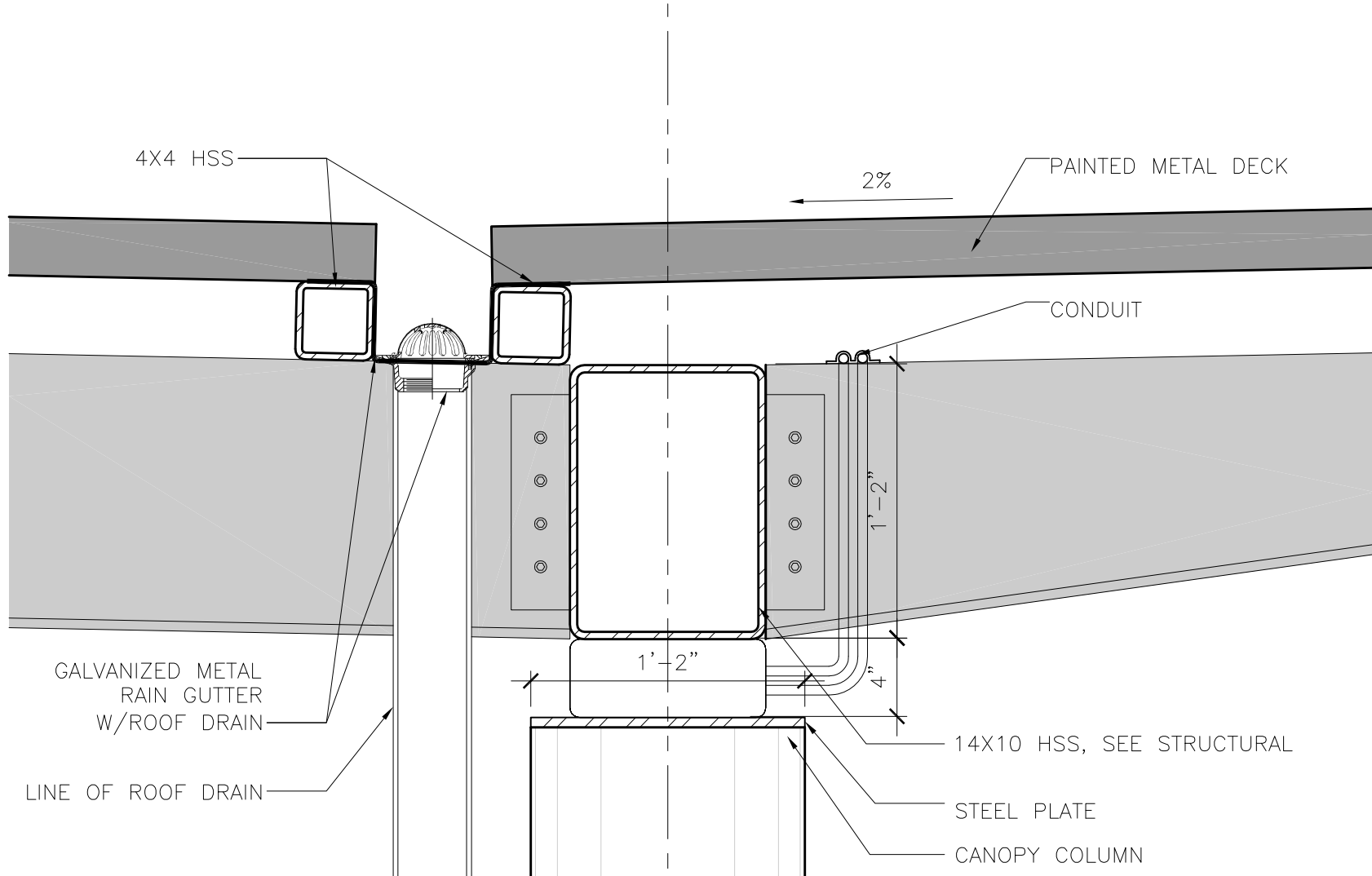
8 ENLARGED PLAN @ REVENUE CONTROL  
1/4"=1'-0"



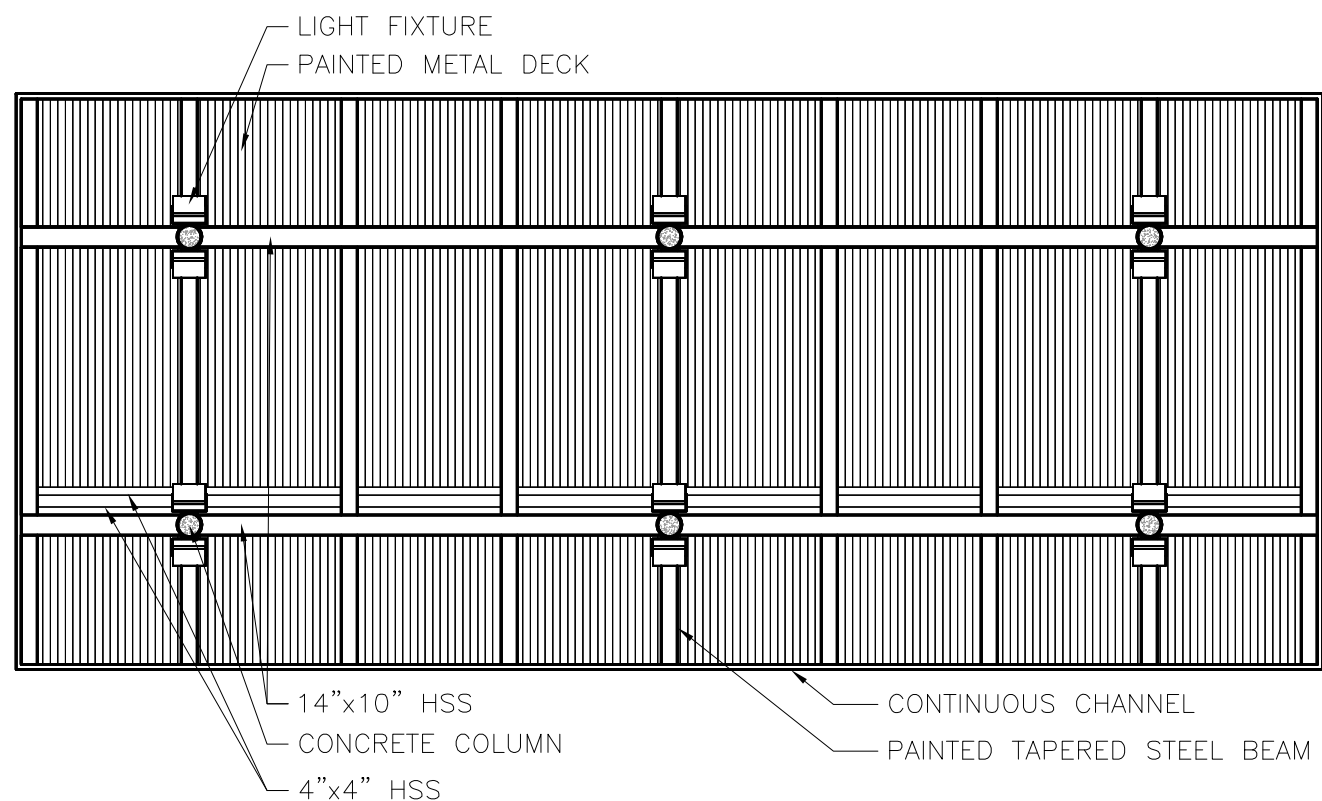
5 CANOPY PARTIAL SECTION @ REVENUE CONTROL  
1/2"=1'-0"



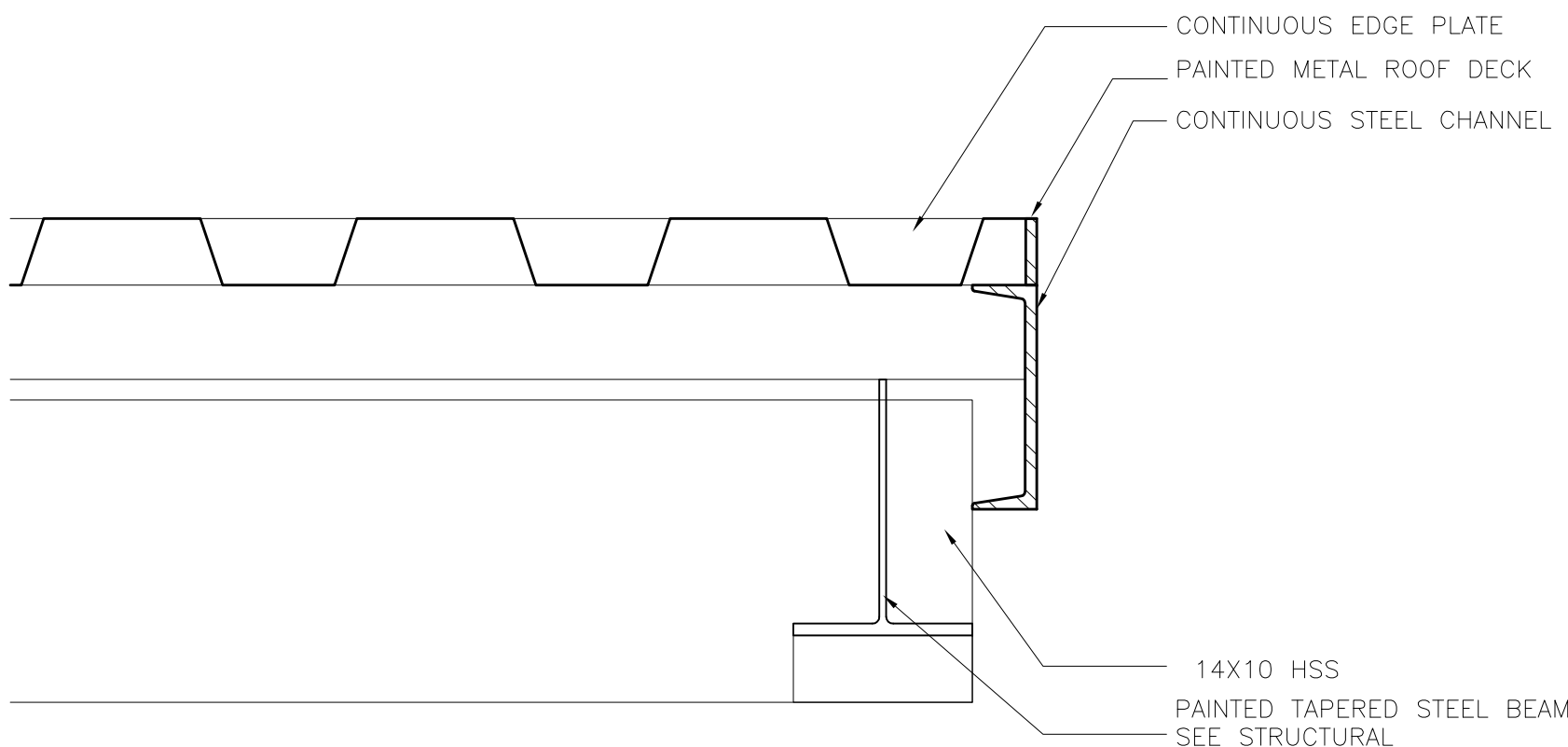
9 CANOPY SECTION DETAIL  
1 1/2"=1'-0"



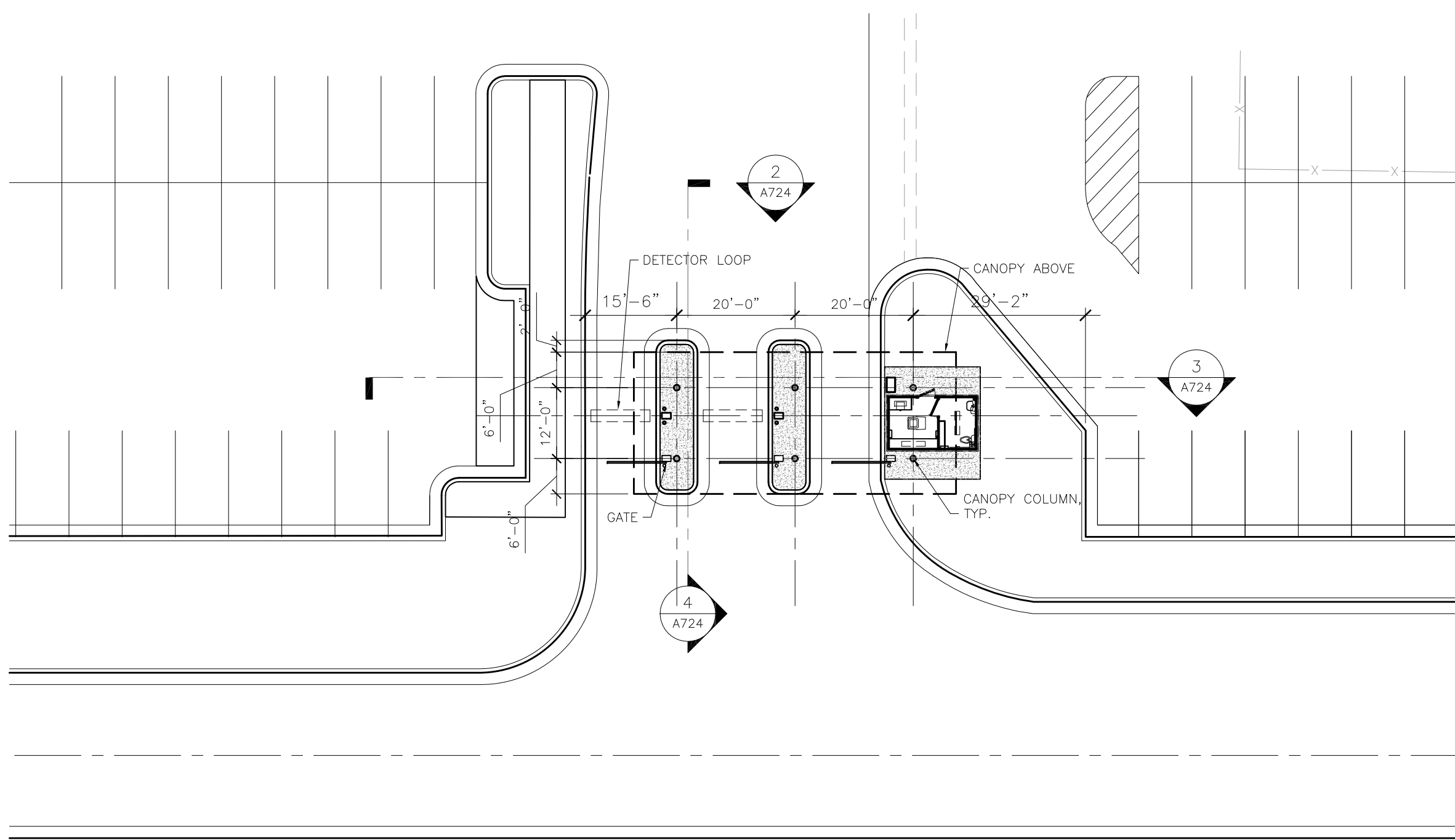
6 CANOPY SECTION DETAIL  
1 1/2"=1'-0"



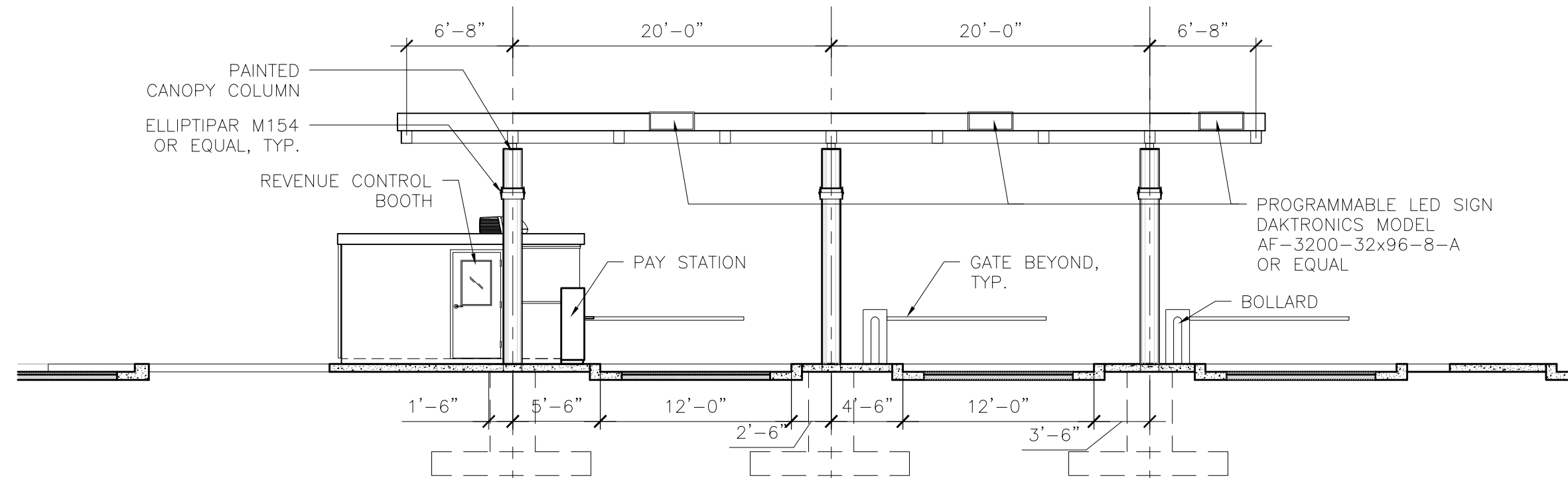
10 CANOPY REFLECTED CEILING PLAN  
1/8"=1'-0"



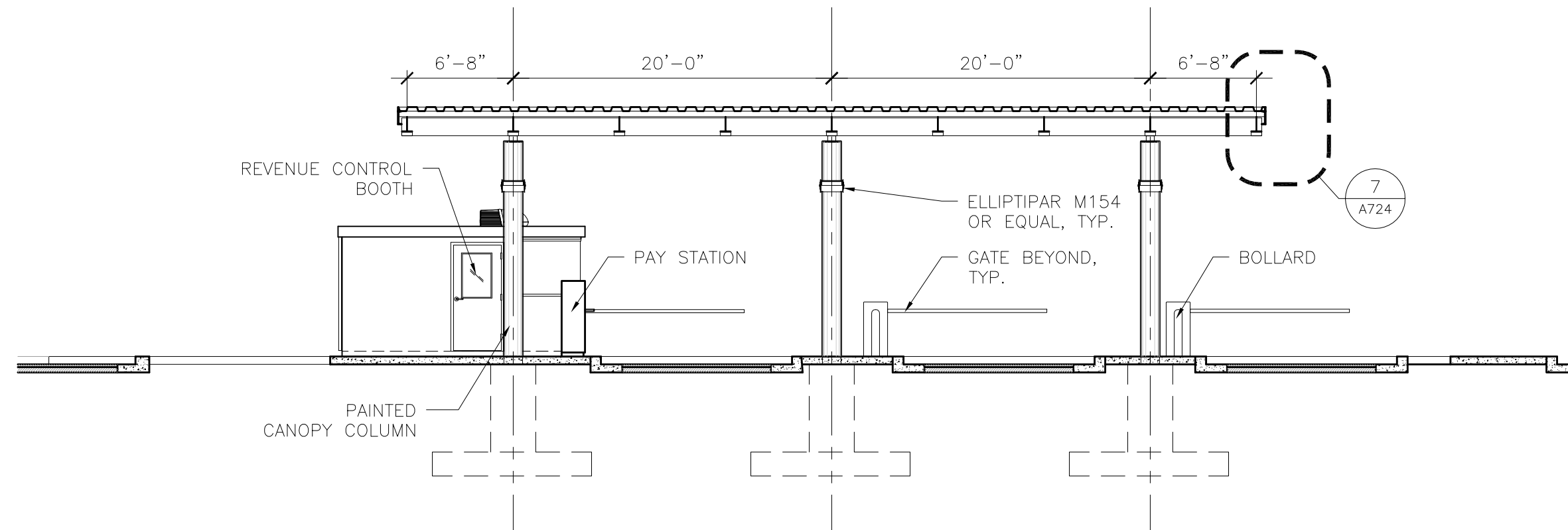
7 CANOPY SECTION DETAIL  
1 1/2"=1'-0"



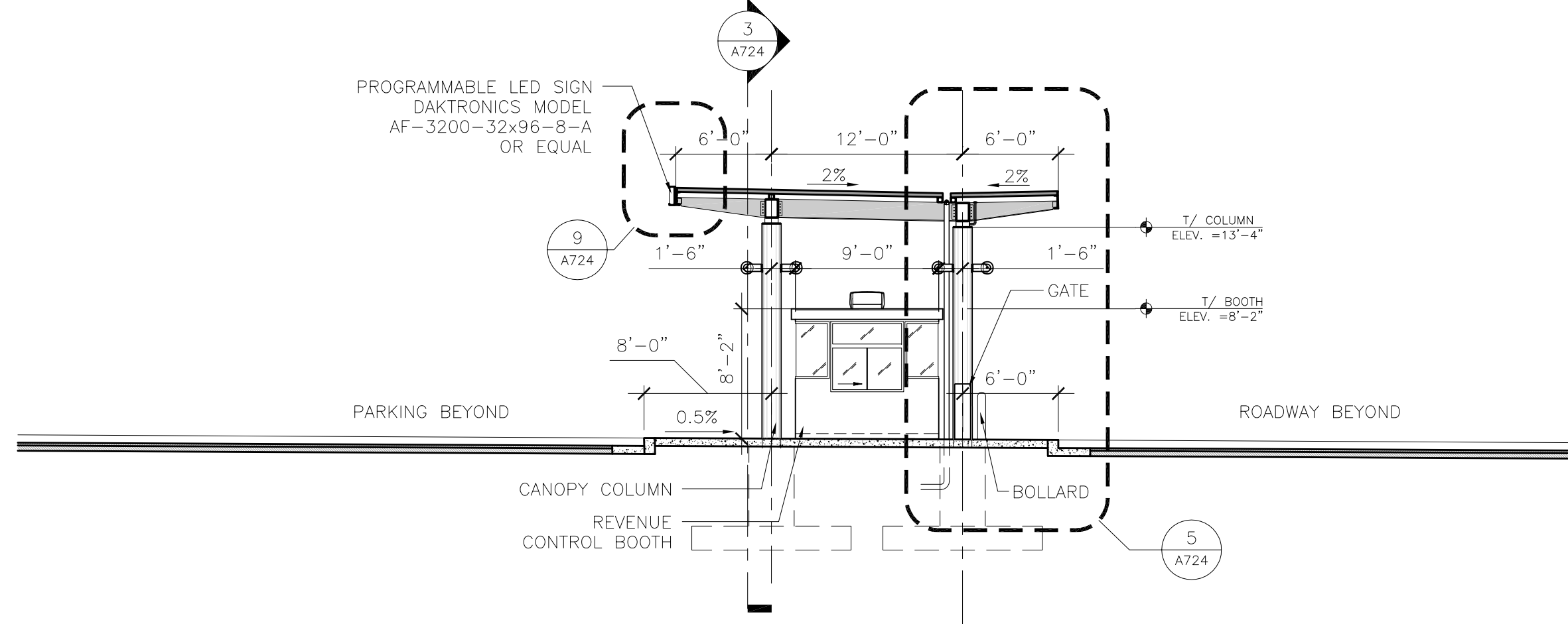
1 ARCHITECTURAL SITE PLAN @ REVENUE CONTROL  
1"=20'-0"



2 OVERALL ELEVATION @ REVENUE CONTROL  
1/8"=1'-0"



3 OVERALL LONGITUDINAL SECTION @ REVENUE CONTROL  
1/8"=1'-0"



4 OVERALL CROSS SECTION @ REVENUE CONTROL  
1/8"=1'-0"

**RS&H**  
IMPROVING YOUR WORLD

Reynolds, Smith and Hills, Inc.  
4525 Airport Approach Rd, Ste A  
Duluth, Minnesota 55811  
218-722-1227 Fax: 218-722-1052  
www.rsandh.com

**DULUTH AIRPORT  
AUTHORITY**

**DULUTH  
INTERNATIONAL  
AIRPORT  
DULUTH, MN**

**NEW PASSENGER  
TERMINAL**

**CONSULTANTS**  
Interior Architects:  
**SJA ARCHITECTS**  
11 E Superior Street Suite 340, Duluth MN 55802  
TEL: (218) 724-6576 / FAX: (218) 724-8717  
Structural Engineers:  
**MBJ CONSULTING ENG.**  
501 Lake Avenue South, Suite 300, Duluth MN 55802  
TEL: (218) 722-1056 / FAX: (218) 722-9306  
ME/P/FP Engineers:  
**COSENTINI ASSOCIATES INC.**  
1 South Wacker Drive, 37th Floor, Chicago IL 60606  
TEL: (312) 201-7408 / FAX: (312) 201-0031  
Baggage Handling Systems Consultants:  
**BNP ASSOCIATES INC.**  
101 East Ridge Office Park, Suite 103, Danbury CT 06810  
TEL: (203) 792-3000 / FAX: (203) 792-4900  
Landscape Consultants:  
**APPOLO DESIGN**  
2432 East First Street, Duluth MN 55812  
TEL: (218) 591-5079

**ARCHITECTURAL CERTIFICATION**  
I hereby certify that the architectural plans, specifications or report was prepared by me or under my direct supervision and that I am a duly licensed Professional Architect under the laws of the State of Minnesota.

Print Name: Mark Ip

Signature:

Date: 06-03-10 Reg. No.: 46001

REVISIONS		
NO.	DESCRIPTION	DATE
BID PACKAGE 2C		2.10.12
1	BP2C ADDENDUM 2	3.2.12
2	BP2C ADDENDUM 3	3.9.12
	BP2C CONFORMANCE	3.20.12

DATE ISSUED: 03-20-12  
REVIEWED BY: TC  
DRAWN BY: MK  
DESIGNED BY: TC

AEP PROJECT NUMBER  
213-1882-091  
© 2010 REYNOLDS, SMITH AND HILLS INC.

SHEET TITLE  
**EXTERIOR SYSTEM  
SHEET- REVENUE  
CONTROL**

SHEET NUMBER  
**A724**

**BID PACKAGE 2C  
CONFORMANCE**