



**Purchasing Division**  
*Finance Department*  
Room 120  
411 West First Street  
Duluth, Minnesota 55802

 218-730-5340  
 purchasing@duluthmn.gov

**Addendum 4**  
**Solicitation 24-99199**  
**Lower Spirit Nordic Center Lighting & Snowmaking**

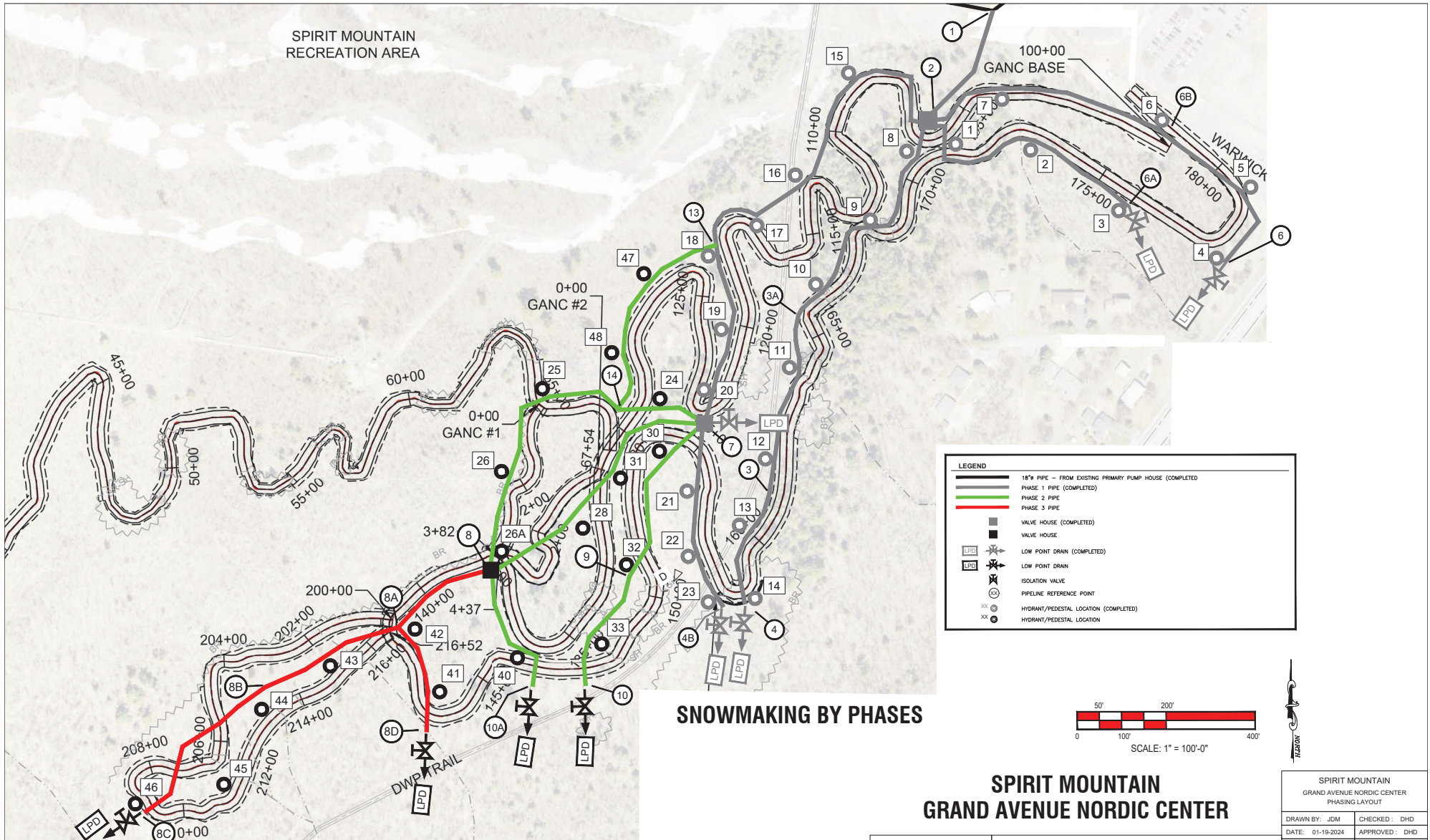
This addendum serves to notify all bidders of the following changes to the solicitation documents:

- Drawing for plan set 852615-M1 have been updated and are attached to this addendum.

Please acknowledge receipt of this Addendum by checking the acknowledgement box within the [www.bidexpress.com](http://www.bidexpress.com) solicitation.

Posted: **February 9, 2024**

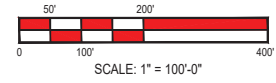
SPIRIT MOUNTAIN  
RECREATION AREA



**SNOWMAKING BY PHASES**

**LEGEND**

- 18" PIPE - FROM EXISTING PRIMARY PUMP HOUSE (COMPLETED)
- PHASE 1 PIPE (COMPLETED)
- PHASE 2 PIPE
- PHASE 3 PIPE
- VALVE HOUSE (COMPLETED)
- VALVE HOUSE
- LOW POINT DRAIN (COMPLETED)
- LOW POINT DRAIN
- ISOLATION VALVE
- PIPELINE REFERENCE POINT
- HYDRANT/PEDESTAL LOCATION (COMPLETED)
- HYDRANT/PEDESTAL LOCATION



**SPIRIT MOUNTAIN  
GRAND AVENUE NORDIC CENTER**

NO.	DATE	REVISION	BY
6	02-06-18	REVISED PER COMMENTS	JDM
7	12-21-23	PHASE 1 COMPLETE / UPDATED PHASE 2-3	JDM
8	01-19-24	REVISED PER COMMENTS	JDM

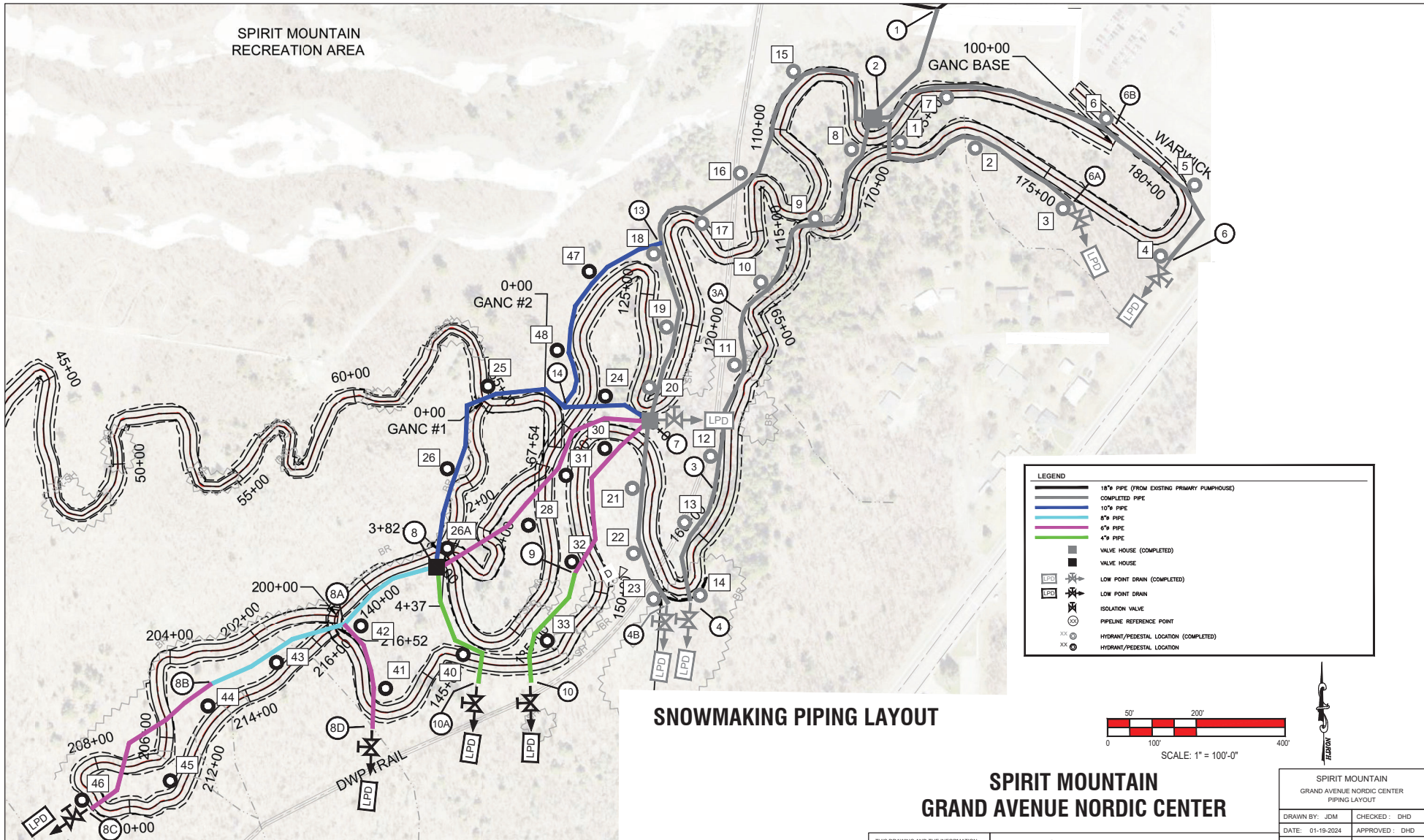
ALL TORRENT DRAWINGS ARE PROVIDED FOR PROCESS EQUIPMENT DESIGN AND INSTALLATION. SITE PLAN AND BUILDING DETAILS ARE REPRESENTATIVE AND SHOWN FOR CLARITY ONLY. SEE CIVIL SITE PLAN OR BUILDING DESIGN DRAWINGS FOR ALL SITE AND BUILDING CONSTRUCTION INFORMATION AND DIMENSIONS

THIS DRAWING AND THE INFORMATION SHOWN HEREON IS THE EXCLUSIVE PROPERTY OF TORRENT ENGINEERING AND EQUIPMENT, LLC, AND SHALL NOT BE REPRODUCED OR DISCLOSED TO ANY THIRD PARTY WITHOUT PRIOR WRITTEN CONSENT FROM THE COMPANY.

**TORRENT** Engineering and Equipment  
 406 E. BELL DR. WARSAW, IN 46582 USA  
 Phone: (574)-372-3200 Fax: (574)-372-3229 www.torrentee.com

SPIRIT MOUNTAIN GRAND AVENUE NORDIC CENTER PHASING LAYOUT	
DRAWN BY: JDM	CHECKED: DHD
DATE: 01-19-2024	APPROVED: DHD
SCALE: AS NOTED	D - SIZE DRAWING
DRAWING NUMBER: <b>852615-M1</b>	
REV: 8	SHEET: 1 OF 8





SPIRIT MOUNTAIN RECREATION AREA

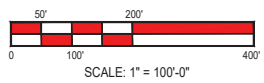
100+00 GANC BASE  
WARWICK  
180+00  
175+00

0+00 GANC #2  
0+00 GANC #1

**SNOWMAKING PIPING LAYOUT**

**LEGEND**

- 18" PIPE (FROM EXISTING PRIMARY PUMPHOUSE)
- COMPLETED PIPE
- 10" PIPE
- 8" PIPE
- 6" PIPE
- 4" PIPE
- VALVE HOUSE (COMPLETED)
- VALVE HOUSE
- LOW POINT DRAIN (COMPLETED)
- LOW POINT DRAIN
- ISOLATION VALVE
- PIPELINE REFERENCE POINT
- HYDRANT/PEDESTAL LOCATION (COMPLETED)
- HYDRANT/PEDESTAL LOCATION



**SPIRIT MOUNTAIN  
GRAND AVENUE NORDIC CENTER**

SPIRIT MOUNTAIN GRAND AVENUE NORDIC CENTER PIPING LAYOUT	
DRAWN BY: JDM	CHECKED: DHD
DATE: 01-19-2024	APPROVED: DHD
SCALE: AS NOTED	D - SIZE DRAWING
DRAWING NUMBER: <b>852615-M1</b>	
REV: 8	SHEET: 2 OF 8

NO.	DATE	REVISION	BY
6	02-06-18	REVISED PER COMMENTS	JDM
7	12-21-23	PHASE 1 COMPLETE / UPDATED PHASE 2-3	JDM
8	01-19-24	REVISED PER COMMENTS	JDM

ALL TORRENT DRAWINGS ARE PROVIDED FOR PROCESS EQUIPMENT DESIGN AND INSTALLATION. SITE PLAN AND BUILDING DETAILS ARE REPRESENTATIVE AND SHOWN FOR CLARITY ONLY. SEE CIVIL SITE PLAN OR BUILDING DESIGN DRAWINGS FOR ALL SITE AND BUILDING CONSTRUCTION INFORMATION AND DIMENSIONS.

THIS DRAWING AND THE INFORMATION SHOWN HEREON IS THE EXCLUSIVE PROPERTY OF TORRENT ENGINEERING AND EQUIPMENT, LLC, AND SHALL NOT BE REPRODUCED OR DISCLOSED TO ANY THIRD PARTY WITHOUT PRIOR WRITTEN CONSENT FROM THE COMPANY.

**TORRENT** Engineering and Equipment  
 406 E. BELL DR. WARSAW, IN 46582 USA  
 Phone: (574)-372-3200 Fax: (574)-372-3229 www.torrentee.com

**NORDIC SNOWMAKING PIPING - ABOVE GROUND CONFIGURATION**

Location on Map	Distance on Map (FT)	Pipeline Length (see note 1) (FT)	Water Piping Grade B or Equal (OD x Min. Wall)	Number of Hydrants and Pedestals (see note 3)	Hydrant Numbers
<b>PHASE 2</b>					
13-14	480	530	10-3/4" x 0.365"	2	47, 48
14-7	180	200	10-3/4" x 0.365"	1	24
14-8	590	650	10-3/4" x 0.365"	3	25, 26, 26A
7-8	620	680	6-5/8" x 0.280"	2	31, 28
7-9	390	430	6-5/8" x 0.280"	2	30, 32
9-10	280	310	4-1/2" x 0.237"	1	33
8-10A	290	320	4-1/2" x 0.237"	1	40
<b>PHASE 2</b>		3120		12	
<b>PHASE 3</b>					
8-8A	240	260	8-5/8" x 0.322"	0	
8A-8B	330	360	8-5/8" x 0.322"	1	43
8B-8C	400	440	6-5/8" x 0.280"	3	44, 45, 46
8A-8D	250	280	6-5/8" x 0.280"	2	41, 42
<b>PHASE 3</b>		1340		6	
<b>TOTALS</b>	4050 Ft	4460 Ft		18	
Notes:					
1.) A 10% variation allowance has been added to measured map distances to obtain estimated pipe lengths. Measure and verify all pipe lengths before ordering.					
2.) All pipe to be new prime steel pipe, specification API-5L, Grade B or better.					
3.) One (1) electrical pedestal for each pair of the following hydrants; 5/5A, 20/20A, and 30/30A					

**NORDIC SNOWMAKING PIPING - PIPELINE FITTINGS**

**NOTE: TRIM 45 AND 90 ELBOWS TO FIT NEEDED PIPELINE ROUTING ANGLES**

All fittings ASTM A234, Grade B Carbon Steel

PRELIM LOCATION	DESCRIPTION	MANUFACTURER/ MODEL/ENGINEERING DATA	QTY
<b>PHASE 2</b>			
13-14	Reducer, Weld, Eccentric: 10x8	Standard wall, bevel end, A234	1
	Elbow - 90 Deg: 10" Long radius weld	10" 90 Standard wall, bevel end, long radius A234 weld	1
	Elbow - 45 Deg: 10" weld	10" 45 Standard wall, bevel end, A234 weld	2
	Tee: 10" weld	10" Tee Standard wall, bevel end, A234	1
14-7	Elbow - 45 Deg: 10" weld	10" 45 Standard wall, bevel end, A234 weld	1
14-8	Elbow - 45 Deg: 10" weld	10" 45 Standard wall, bevel end, A234 weld	2
	Elbow - 90 Deg: 10" Long radius weld	10" 90 Standard wall, bevel end, long radius A234 weld	1
7-8	Elbow - 90 Deg: 6" Long radius weld	6" 90 Standard wall, bevel end, long radius A234 weld	1
	Elbow - 45 Deg: 6" weld	6" 45 Standard wall, bevel end, A234 weld	3
7-9	Elbow - 45 Deg: 6" weld	6" 45 Standard wall, bevel end, A234 weld	2
9-10	Reducer, Weld, Eccentric: 6x4	Standard wall, bevel end, A234	1
	Elbow - 45 Deg: 4" weld	4" 45 Standard wall, bevel end, A234 weld	2
8-10A	Elbow - 45 Deg: 4" weld	4" 45 Standard wall, bevel end, A234 weld	2
	Elbow - 90 Deg: 4" Long radius weld	4" 90 Standard wall, bevel end, long radius A234 weld	1
<b>PHASE 3</b>			
8-8A	Elbow - 45 Deg: 6" weld	6" 45 Standard wall, bevel end, A234 weld	3
	Reducer, Weld, Eccentric: 6x8	Standard wall, bevel end, A234	2
8A-8D	Elbow - 45 Deg: 6" weld	6" 45 Standard wall, bevel end, A234 weld	2
8A-8B	Reducer, Weld, Eccentric: 8x6	Standard wall, bevel end, A234	1
8B-8C	Elbow - 45 Deg: 6" weld	6" 45 Standard wall, bevel end, A234 weld	2

NOTE: ALL MATERIALS (FITTINGS AND VALVES) FOR END POINT & LOW POINT DRAINS AND VALVE STATIONS ARE LISTED WITH THE INDIVIDUAL DETAILS.

**SPIRIT MOUNTAIN GRAND AVENUE NORDIC CENTER**

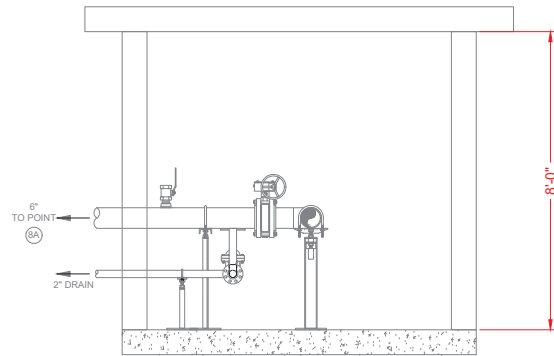
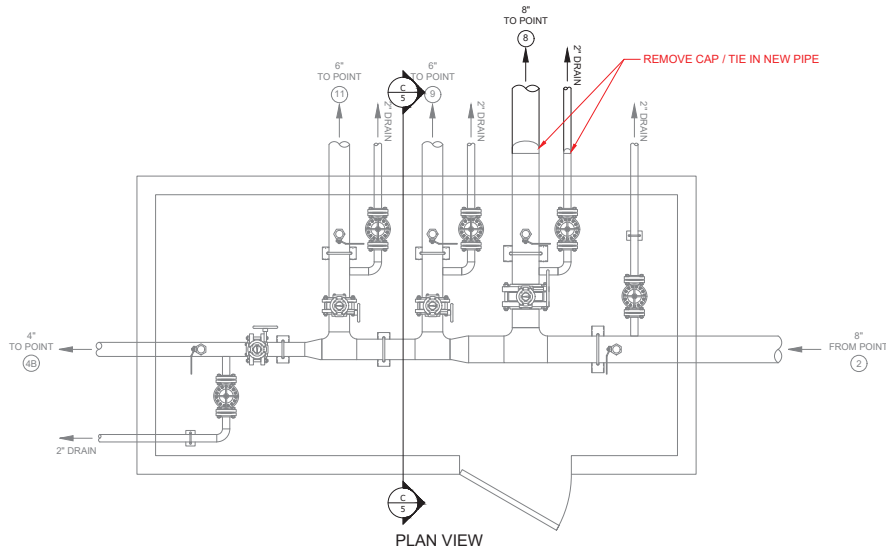
SPIRIT MOUNTAIN GRAND AVENUE NORDIC CENTER PIPELINE FITTINGS LIST	
DRAWN BY: JDM	CHECKED: DHD
DATE: 01-19-2024	APPROVED: DHD
SCALE: AS NOTED	D - SIZE DRAWING
DRAWING NUMBER: 852615-M1	
REV: 8	SHEET: 3 OF 8

NO.	DATE	REVISION	BY
6	02-06-18	REVISED PER COMMENTS	JDM
7	12-21-23	PHASE 1 COMPLETE / UPDATED PHASE 2-3	JDM
8	01-19-24	REVISED PER COMMENTS	JDM

ALL TORRENT DRAWINGS ARE PROVIDED FOR PROCESS EQUIPMENT DESIGN AND INSTALLATION. SITE PLAN AND BUILDING DETAILS ARE REPRESENTATIVE AND SHOWN FOR CLARITY ONLY. SEE CIVIL SITE PLAN OR BUILDING DESIGN DRAWINGS FOR ALL SITE AND BUILDING CONSTRUCTION INFORMATION AND DIMENSIONS

THIS DRAWING AND THE INFORMATION SHOWN HEREON IS THE EXCLUSIVE PROPERTY OF TORRENT ENGINEERING AND EQUIPMENT, LLC AND SHALL NOT BE REPRODUCED OR DISCLOSED TO ANY THIRD PARTY WITHOUT PRIOR WRITTEN CONSENT FROM THE COMPANY.

**TORRENT Engineering and Equipment**  
 406 E. BELL DR. WARSAW, IN 46582 USA  
 Phone: (574)-372-3200 Fax: (574)-372-3229 www.torrentee.com



**VALVE STATION 2 - REF PT 7**

**SPIRIT MOUNTAIN  
GRAND AVENUE NORDIC CENTER**

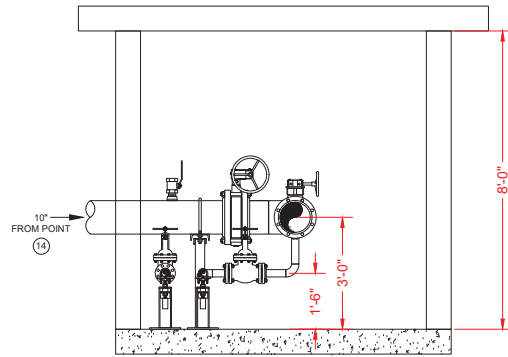
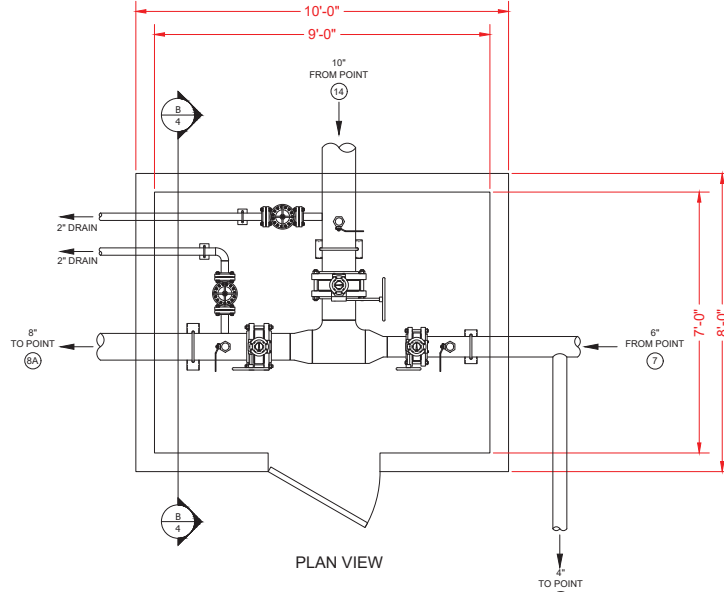
NO.	DATE	REVISION	BY
6	02-06-18	REVISED PER COMMENTS	JDM
7	12-21-23	PHASE 1 COMPLETE / UPDATED PHASE 2-3	JDM
8	01-19-24	REVISED PER COMMENTS	JDM

ALL TORRENT DRAWINGS ARE PROVIDED FOR PROCESS EQUIPMENT DESIGN AND INSTALLATION. SITE PLAN AND BUILDING DETAILS ARE REPRESENTATIVE AND SHOWN FOR CLARITY ONLY. SEE CIVIL SITE PLAN OR BUILDING DESIGN DRAWINGS FOR ALL SITE AND BUILDING CONSTRUCTION INFORMATION AND DIMENSIONS

THIS DRAWING AND THE INFORMATION SHOWN HEREON IS THE EXCLUSIVE PROPERTY OF TORRENT ENGINEERING AND EQUIPMENT, LLC, AND SHALL NOT BE REPRODUCED OR DISCLOSED TO ANY THIRD PARTY WITHOUT PRIOR WRITTEN CONSENT FROM THE COMPANY.

**TORRENT** Engineering and Equipment  
 406 E. BELL DR. WARSAW, IN 46582 USA  
 Phone: (574)-372-3200 Fax: (574)-372-3229 www.torrentee.com

SPIRIT MOUNTAIN GRAND AVENUE NORDIC CENTER DETAILS	
DRAWN BY: JDM	CHECKED: DHD
DATE: 01-19-2024	APPROVED: DHD
SCALE: AS NOTED	D - SIZE DRAWING
DRAWING NUMBER: <b>852615-M1</b>	
REV: 8	SHEET: 4 OF 8



SECTION B-B  
REFERENCE PT (8)  
VALVE STATION 3 (VS3)

NORDIC SNOWMAKING PIPING - VALVE STATION #3 (VS3) - REF PT 8

QUANTITIES LISTED ARE FOR EACH VALVE STATION

ITEM	DESCRIPTION	MANUFACTURER MODEL/ENGINEERING DATA	QTY
Pipe:	10"	10"-BLK CS ERW PIPE (10-3/4" OD) ASTM A-53 / API 5L GRADE B, 0.365" wall (MN)	As Required +/- 5'-0"
Tee:	10"	10" Tee Standard wall, bevel end, A234	1
Reducer, Weld, Concentric:	10x6	Standard wall, bevel end, A234	1
Reducer, Weld, Concentric:	10x6	Standard wall, bevel end, A234	1
Pipe:	8"	8"-BLK CS ERW PIPE (8-5/8" OD) ASTM A-53 / API 5L GRADE B, 0.322" wall (MN)	As Required +/- 5'-0"
Pipe:	6"	6"-BLK CS ERW PIPE (6-5/8" OD) ASTM A-53 / API 5L GRADE B, 0.280" wall (MN)	As Required +/- 5'-0"
Isolation Valve:	10"-300# wafer butterfly valve with gear operator	Bray Series 42-466 10" 300# CS body, 316ss disc, 17-4 shaft, RTFE seat, TFE packing, Glass backed TFE bearing, Gear Operator	1
Stud And Nut Set	1"x10"	2474-0877 B7, Zinc Plated Stud with 2 Nuts 1"x10"	16
Spiral Wound Gasket	10" 300# RFSO	2511-0156 10" 300# Steel / Chlorite / Graphite	2
Flange:	10" 300# RFSO	1700-3186 slip on flange, raised face standard bore A105 10" 300#	2
Isolation Valve:	8"-300# wafer butterfly valve with gear operator	Bray Series 42-466 8" 300# CS body, 316ss disc, 17-4 shaft, RTFE seat, TFE packing, Glass backed TFE bearing, Gear Operator	1
Stud And Nut Set	7/8"x9"	2474-0877 B7, Zinc Plated Stud with 2 Nuts 7/8"x9"	12
Spiral Wound Gasket	8" 300# RFSO	2511-0153 8" 300# Steel / Chlorite / Graphite	2
Flange:	8" 300# RFSO	1700-3178 slip on flange, raised face standard bore A105 8" 300#	2
Isolation Valve:	6"-300# wafer butterfly valve with gear operator	Bray Series 42-466 6" 300# CS body, 316ss disc, 17-4 shaft, RTFE seat, TFE packing, Glass backed TFE bearing, Gear Operator	1
Stud And Nut Set	3/4"x7-1/2"	2474-0469 B7, Zinc Plated Stud with 2 Nuts 3/4"x7-1/2"	12
Spiral Wound Gasket	6" 300# RFSO	2511-0149 6" 300# Steel / Chlorite / Graphite	2
Flange:	6" 300# RFSO	1702-3195 6" 300# weldneck flange, raised face standard bore A105	2
Pipe:	2"	2" (2-3/8" OD) CS SEAMLESS PIPE, Black, beveled ASTM A-120 GRADE A 0.218" (SCH80) wall	As Required +/- 30'-0"
Elbow:	2" Long radius	2" 90 Standard wall, bevel end, long radius A234 weld	1
Gate Valve:	2" 300# Gate valve	2" 300# Bonney gate valve 3-11-RF, CS body, OS&Y Gate Valve	1
300# Flange Stud Set	2" Flange	FE T&P GRF HW B7, Zinc Plated Stud with 2 Nuts 5/8"x1-1/4"	2
Spiral Wound Gasket	2" 300# RFSO	2" 300# Steel / Chlorite / Graphite	4
Flange:	2" 300# RFSO	2" 300# slip-on flange, raised face standard bore A105	4
Thread-O-Let:	2"	36-62, A105 TOL	3
Nipple:	2" x 3"	2" X 3" NPT, HJ, Forged Steel, SA106 Black	3
Ball Valve:	2"	Apollo 70 108-01 600 WDG bronze 2 piece threaded 2"	3
Pipe Stand	10"	10" saddle pipe support with U-bolt and bolt to floor, fabricated and painted	1
Pipe Stand	8"	8" saddle pipe support with U-bolt and bolt to floor, fabricated and painted	1
Pipe Stand	6"	6" saddle pipe support with U-bolt and bolt to floor, fabricated and painted	1
Pipe Stand	2"	2" saddle pipe support with U-bolt and bolt to floor, fabricated and painted	3

NO.	DATE	REVISION	BY
6	02-06-18	REVISED PER COMMENTS	JDM
7	12-21-23	PHASE 1 COMPLETE / UPDATED PHASE 2-3	JDM
8	01-19-24	REVISED PER COMMENTS	JDM

ALL TORRENT DRAWINGS ARE PROVIDED FOR PROCESS EQUIPMENT DESIGN AND INSTALLATION. SITE PLAN AND BUILDING DETAILS ARE REPRESENTATIVE AND SHOWN FOR CLARITY ONLY. SEE CIVIL SITE PLAN OR BUILDING DESIGN DRAWINGS FOR ALL SITE AND BUILDING CONSTRUCTION INFORMATION AND DIMENSIONS

THIS DRAWING AND THE INFORMATION SHOWN HEREON IS THE EXCLUSIVE PROPERTY OF TORRENT ENGINEERING AND EQUIPMENT, LLC AND SHALL NOT BE REPRODUCED OR DISCLOSED TO ANY THIRD PARTY WITHOUT PRIOR WRITTEN CONSENT FROM THE COMPANY.

**TORRENT Engineering and Equipment**  
 406 E. BELL DR. WARSAW, IN 46582 USA  
 Phone: (574)-372-3200 Fax: (574)-372-3229 www.torrentee.com

**SPIRIT MOUNTAIN  
GRAND AVENUE NORDIC CENTER**

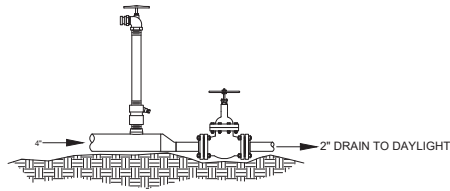
SPIRIT MOUNTAIN GRAND AVENUE NORDIC CENTER DETAILS	
DRAWN BY: JDM	CHECKED: DHD
DATE: 01-19-2024	APPROVED: DHD
SCALE: AS NOTED	D - SIZE DRAWING
DRAWING NUMBER: <b>852615-M1</b>	
REV: 8	SHEET: 5 OF 8

REFERENCE PT'S

10 10A 8C 8D



TOP VIEW



END OF LINE DRAIN

NORDIC SNOWMAKING PIPING - END OF LINE DRAINS - REF PT 10, 10A, 8C, 8D

QUANTITIES LISTED ARE FOR EACH EAN OF LINE LOCATION

ITEM	DESCRIPTION	MANUFACTURER/ MODEL/ENGINEERING DATA	QTY
Reducer, Weld, Eccentric: 4x2		Standard wall, bevel end, A234	1
Pipe: 2"		2" (2-3/8" OD) CS SEAMLESS PIPE, Black, beveled ASTM A-120 GRADE A, 0.218" (SCH80) wall	As Required +/- 4'-0"
Gate Valve: 2" 300# Gate valve		0907-1001 2" 300# Bonney gate valve 3-11-RF, CS body, OS&Y Gate Valve FE T & P GRF HW	1
300# Flange Stud Set 2" Flange		2474-0223 B7, Zinc Plated Stud with 2 Nuts 5/8"x4-1/4"	8
Spiral Wound Gasket Flange:		2511-0133 2" 300# Steel / Chlorite / Graphite	2
2" 300# RFSO.		2" 300# slip-on flange, raised face standard bore A105	2

NO.	DATE	REVISION	BY
6	02-06-18	REVISED PER COMMENTS	JDM
7	12-21-23	PHASE 1 COMPLETE / UPDATED PHASE 2-3	JDM
8	01-19-24	REVISED PER COMMENTS	JDM

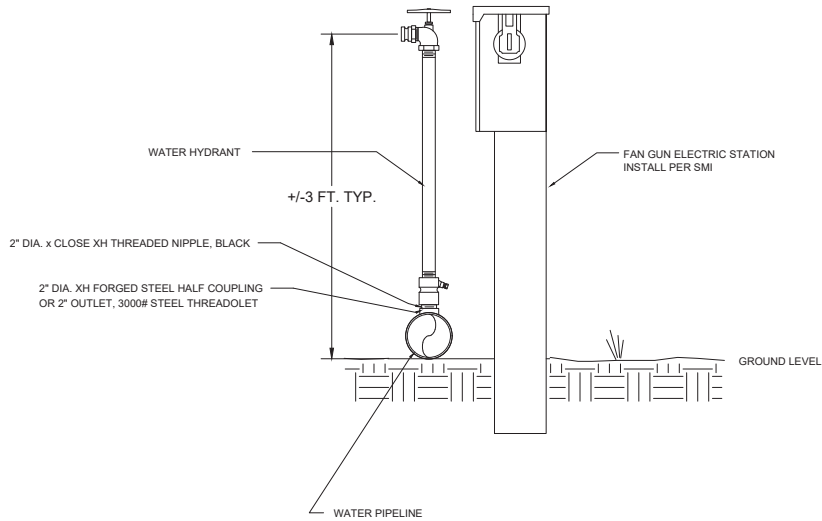
ALL TORRENT DRAWINGS ARE PROVIDED FOR PROCESS EQUIPMENT DESIGN AND INSTALLATION. SITE PLAN AND BUILDING DETAILS ARE REPRESENTATIVE AND SHOWN FOR CLARITY ONLY. SEE CIVIL SITE PLAN OR BUILDING DESIGN DRAWINGS FOR ALL SITE AND BUILDING CONSTRUCTION INFORMATION AND DIMENSIONS

**SPIRIT MOUNTAIN  
GRAND AVENUE NORDIC CENTER**



406 E. BELL DR. WARSAW, IN 46582 USA  
Phone: (574)-372-3200 Fax: (574)-372-3229 www.torrentee.com

SPIRIT MOUNTAIN GRAND AVENUE NORDIC CENTER DETAILS	
DRAWN BY: JDM	CHECKED: DHD
DATE: 01-19-2024	APPROVED: DHD
SCALE: AS NOTED	D - SIZE DRAWING
DRAWING NUMBER: <b>852615-M1</b>	
REV: 8	SHEET: 6 OF 8



ABOVE GROUND HYDRANT AND FAN GUN STATION DETAIL - TYP.

NO.	DATE	REVISION	BY
6	02-06-18	REVISED PER COMMENTS	JDM
7	12-21-23	PHASE 1 COMPLETE / UPDATED PHASE 2-3	JDM
8	01-19-24	REVISED PER COMMENTS	JDM

ALL TORRENT DRAWINGS ARE PROVIDED FOR PROCESS EQUIPMENT DESIGN AND INSTALLATION. SITE PLAN AND BUILDING DETAILS ARE REPRESENTATIVE AND SHOWN FOR CLARITY ONLY. SEE CIVIL SITE PLAN OR BUILDING DESIGN DRAWINGS FOR ALL SITE AND BUILDING CONSTRUCTION INFORMATION AND DIMENSIONS

## SPIRIT MOUNTAIN GRAND AVENUE NORDIC CENTER

SPIRIT MOUNTAIN  
GRAND AVENUE NORDIC CENTER  
DETAILS

DRAWN BY: JDM CHECKED: DHD

DATE: 01-19-2024 APPROVED: DHD

SCALE: AS NOTED D - SIZE DRAWING

DRAWING NUMBER:

852615-M1

REV: 8 SHEET: 7 OF 8

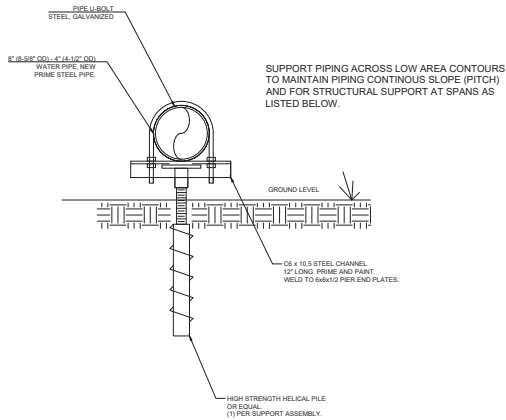
THIS DRAWING AND THE INFORMATION SHOWN HEREON IS THE EXCLUSIVE PROPERTY OF TORRENT ENGINEERING AND EQUIPMENT, LLC, AND SHALL NOT BE REPRODUCED OR DISCLOSED TO ANY THIRD PARTY WITHOUT PRIOR WRITTEN CONSENT FROM THE COMPANY.



**TORRENT** Engineering and Equipment

406 E. BELL DR. WARSAW, IN 46582 USA  
Phone: (574)-372-3200 Fax: (574)-372-3229 www.torrentee.com

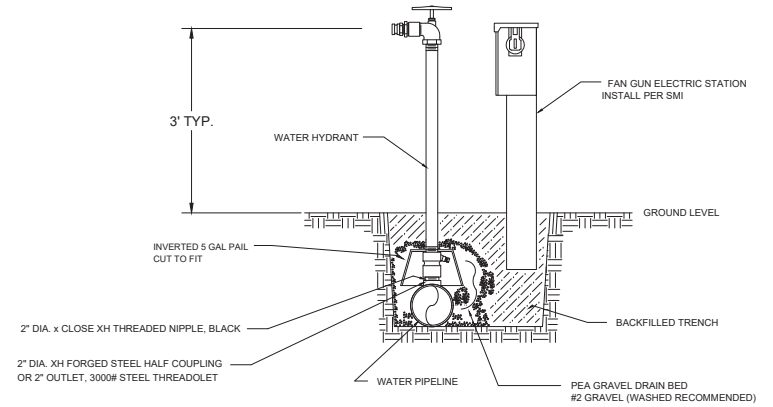




**ABOVE GROUND ELEVATED PIPE SUPPORT ASSEMBLY**

MAXIMUM UNSUPPORTED PIPE SPAN; 12' FOR 8" PIPING, 8' FOR 4" AND 6" PIPING

ALTERNATE IN LEDGE ROCK AREAS - PIN SUPPORT(S) TO ROCK



**SHALLOW BURY HYDRANT AND FAN GUN STATION DETAIL - TYP.**

NO.	DATE	REVISION	BY
6	02-06-18	REVISED PER COMMENTS	JDM
7	12-21-23	PHASE 1 COMPLETE / UPDATED PHASE 2-3	JDM
8	01-19-24	REVISED PER COMMENTS	JDM

ALL TORRENT DRAWINGS ARE PROVIDED FOR PROCESS EQUIPMENT DESIGN AND INSTALLATION. SITE PLAN AND BUILDING DETAILS ARE REPRESENTATIVE AND SHOWN FOR CLARITY ONLY. SEE CIVIL SITE PLAN OR BUILDING DESIGN DRAWINGS FOR ALL SITE AND BUILDING CONSTRUCTION INFORMATION AND DIMENSIONS

**SPIRIT MOUNTAIN  
GRAND AVENUE NORDIC CENTER**

SPIRIT MOUNTAIN  
GRAND AVENUE NORDIC CENTER  
DETAILS

DRAWN BY: JDM	CHECKED: DHD
DATE: 01-19-2024	APPROVED: DHD
SCALE: AS NOTED	D - SIZE DRAWING
DRAWING NUMBER: <b>852615-M1</b>	
REV: 8	SHEET: 8 OF 8

THIS DRAWING AND THE INFORMATION SHOWN HEREON IS THE EXCLUSIVE PROPERTY OF TORRENT ENGINEERING AND EQUIPMENT, LLC AND SHALL NOT BE REPRODUCED OR DISCLOSED TO ANY THIRD PARTY WITHOUT PRIOR WRITTEN CONSENT FROM THE COMPANY.



**TORRENT** Engineering and Equipment

406 E. BELL DR. WARSAW, IN 46582 USA  
Phone: (574)-372-3200 Fax: (574)-372-3229 www.torrentee.com