



**Purchasing Division**  
*Finance Department*  
Room 120  
411 West First Street  
Duluth, Minnesota 55802

218-730-5340  
purchasing@duluthmn.gov

**Addendum 5**  
**Solicitation 23-AA07**  
**Duluth Coastal Infrastructure Rehabilitation Project**

This addendum serves to notify all bidders of the following changes to the solicitation documents:

1. Bidders are reminded that even though a pdf of the bid form is included in the bid documents, all bids **MUST** be submitted electronically via [www.bidexpress.com](http://www.bidexpress.com).
2. Please see the attached documents from AMI for changes to the plans and specs and answers to questions.
3. Federal Heavy Wage Decision IL20230018 affecting dredging and marine construction has been updated. A revised labor cost bidding data form and the new wage decision are attached.

Please acknowledge receipt of this Addendum by checking the acknowledgment box within the [www.bidexpress.com](http://www.bidexpress.com) solicitation.

Posted: **August 18, 2023**



Consulting Engineers P.A.

---

August 18, 2023

**Re: Duluth Coastal Infrastructure Rehabilitation – Addendum #5**

AMI Project # 211016

**1. Question:**

*The bid form is stating that there is only one (1) pergola, but the plans clearly show two (2) pergolas. Could you please revise the bid form to accurately show a quantity of two (2) pergolas?*

**Answer:**

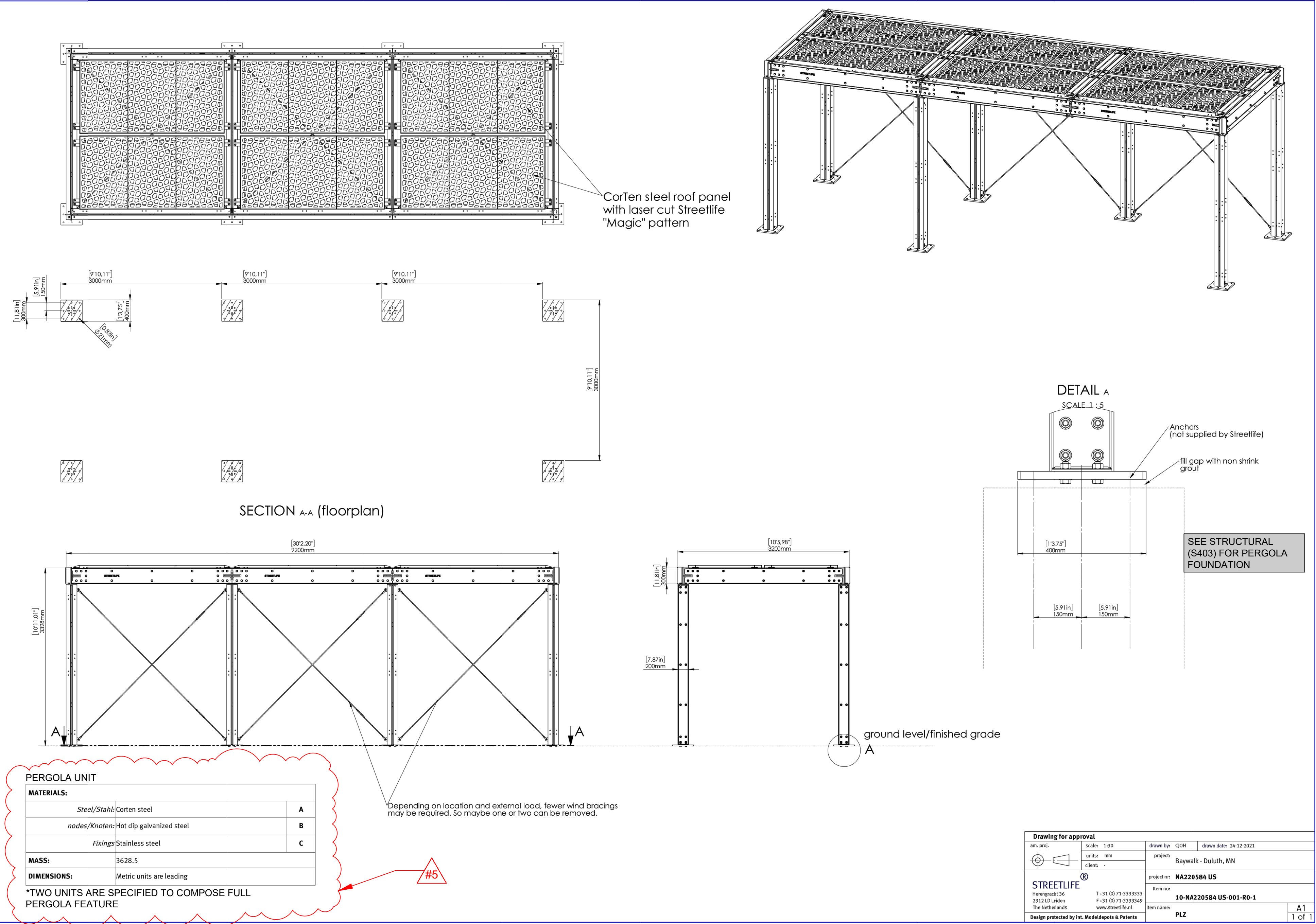
The pergola bid item is presented as a lump sum cost on the bid form. There are two separate pergola structures that should be accounted for under this lump sum bid item. The updated bid form is attached to this addendum. The updated plan sheet L505 is attached to this addendum.



8/16/2023 10:22 AM  
N:\2021\21058 Baywalk\21058 WORKING\AECAD\DWG\21058 Site Details.dwg  
© COPYRIGHT - AMI CONSULTING ENGINEERS P.A., 2006



DESIGN INTENT



SHOP DRAWINGS REQUIRED

DESIGN INTENT

STREETLIFE DESIGNS

DRIFTER STRUCTURE  
PRODUCT REF. NO.  
PLZ-SHA-900-600,  
PLZ-SHA-ROOF-CT  
CONTACT: Somo Wijes  
swijes@streetlife.com

- NOTE:
1. MATERIALS
  - 1.1. CORTEN STEEL
  2. COUNT: TWO UNITS
  3. STRETCH STEEL ROOF INFILL IN WEATHERING STEEL (CORTEN)
  4. DELIVERED UNWEATHERED
  5. MOUNTED PER MANUFACTURER'S SPECIFICATIONS
  6. INCLUDE LED COLUMN SURFACE MOUNTED SPOTLIGHTS. LIGHT MOUNTING SHOULD BE COORDINATED WITH PERGOLA MANUFACTURER PRIOR TO FABRICATION BASED LIGHTING MANUFACTURER'S SURFACE MOUNTING SPECIFICATIONS. SEE ELECTRICAL FOR LIGHT SELECTION.
  7. ALL BRACING LOCATIONS SHOULD BE COORDINATED WITH LANDSCAPE ARCHITECT AND MANUFACTURER PRIOR TO FABRICATION.

OR APPROVED EQUAL

Drawing for approval			
am. proj.	scale: 1:30	drawn by: CQH	drawn date: 24-12-2021
units: mm	project: Baywalk - Duluth, MN		
client: -	item no: 10-NA220584 US-001-R0-1		
project no: NA220584 US	item name: PLZ		
STREETLIFE®			
Herengracht 36 2112 GD Londen The Netherlands			
T +31 (0) 71 3333333 F +31 (0) 71 3333349 www.streetlife.nl			
Design protected by Int. Modeldesigns & Patents			
		A1	1 of 1

I HEREBY CERTIFY THAT THIS PLAN, SPECIFICATION, OR REPORT WAS PREPARED BY ME OR UNDER MY DIRECT SUPERVISION AND THAT I AM A DULUTH RESIDENT UNDER THE LAWS OF THE STATE OF MINNESOTA.

NAME: TERRY MINARIK  
SIGNATURE:   
DATE: 6/22/2023  
LIC. No.: 4292

REV. BY:	DESCRIPTION	REV.	DATE
TM	ISSUED FOR BID		6/22/2023
TM	ADDENDUM #4		8/16/2023
TM	ADDENDUM #5		8/18/2023

SITE DETAILS: PERGOLA

JOB No: 21058  
DATE: 6/22/2023  
DRAWN BY: M.Convery  
DESIGNED BY: T.Minarik

SHEET:



BID PROPOSAL FORM

The purpose of this BID PROPOSAL FORM is to present Unit Costs for installation of each system and materials not purchased by Owner. Miscellaneous materials required by the Contractor not on the bid form shall remain the responsibility of the contractor and are to be included in the Unit Costs for this project. Contractor is responsible for providing final quantities of materials based on their bid.

NOTE: All costs are to be considered final installed or final installed & removal costs. Include cost for all materials not purchased by owner, hardware, shipping, fabrication, labor, equipment, insurance, permits state and local taxes, overhead and profit to properly install items listed under each system. Contractor shall determine earthwork quantities necessary to construct the project per the Construction Documents and as indicated in the Geotechnical Report.

LINE ITEM NO.	SPEC ITEM NO.	ITEM DESCRIPTION		UNIT	TOTAL ESTIMATED QUANTITIES	COST
MOBILIZATION & MATERIAL HANDLING						
1	2021.501	EDA FUNDED MOBILZATION		LUMP SUM	1	
2	2021.501	NON-EDA FUNDED EDA MOBILIZATION		LUMP SUM	1	
3	na	MATERIAL HANDLING		LUMP SUM	1	
MOBILIZATION & MATERIAL HANDLING SUBTOTAL						
CIVIL						
C1	2101.502	GRUBBING		TREE	44	
C2	2104.502	REMOVE PLANTER		EACH	3	
C3	2104.502	REMOVE CONCRETE PLANTER		EACH	5	
C4	2104.502	SALVAGE BENCH		EACH	3	
C5	2104.502	SALVAGE BOUY		EACH	1	
C6	2104.502	SALVAGE SIGN		EACH	8	
C7	2104.502	REMOVE MANHOLE		EACH	2	
C8	2104.502	REMOVE CATCH BASIN		EACH	7	
C9	2104.502	REMOVE HYDRANT		EACH	2	
C10	2104.502	REMOVE GATE VALVE AND BOX		EACH	1	
C11	2104.502	SALVAGE LIGHTING UNIT		EACH	12	
C12	2104.502	REMOVE LIGHT FOUNDATION		EACH	12	
C13	2104.503	REMOVE CURB AND GUTTER		LIN FT	140	
C14	2104.503	SAWING BITUMINOUS PAVEMENT (FULL DEPTH)		LIN FT	389	
C15	2104.503	SAWING CONCRETE PAVEMENT (FULL DEPTH)		LIN FT	1285	
C16	2104.503	REMOVE WATER MAIN		LIN FT	244	
C17	2104.503	REMOVE SEWER PIPE (STORM)		LIN FT	618	
C18	2104.503	REMOVE RETAINING WALL		LIN FT	141	
C19	2104.503	REMOVE FENCE		LIN FT	353	
C20	2104.507	REMOVE RIPRAP		CU YD	249	
C21	2104.518	REMOVE CONCRETE RUBBLE		SQ FT	5400	
C22	2104.518	REMOVE CONCRETE PAVEMENT		SQ FT	25848	
C23	2104.518	REMOVE BITUMINOUS PAVEMENT	(P)	SQ FT	840	
C24	2104.518	REMOVE PAVEMENT		SQ FT	2093	
C25	2104.518	REMOVE BITUMINOUS WALK		SQ FT	2134	
C26	2104.518	REMOVE CONCRETE SIDEWALK		SQ FT	29514	
C27	2104.518	REMOVE CONCRETE DRIVEWAY PAVEMENT	(P)	SQ FT	159	
C28	2104.618	SALVAGE BOARDWALK		SQ FT	5793	
C29	2104.602	SALVAGE STATUE AND BASE		EACH	1	
C30	2104.602	REMOVE STATUE FOUNDATION		EACH	1	
C31	2104.602	REMOVE STEEL PILES		EACH	72	
C32	2104.602	REMOVE CONCRETE POSTS		EACH	62	
C33	2106.507	COMMON EMBANKMENT (CV)		CU YD	2296	
C34	2106.507	EXCAVATION - COMMON	(P)	CU YD	8557	
C35	2108.504	GEOTEXTILE FABRIC TYPE 4		SQ YD	4590	
C36	2108.504	GEOTEXTILE FABRIC TYPE 7		SQ YD	7538	
C37	2211.507	AGGREGATE BASE (CV) CLASS 5	(P)	CU YD	1914	
C38	2212.507	DRAINABLE AGGREGATE BASE, TYPE OGAB	(P)	CU YD	4619	
C39	2301.502	DOWEL BAR		EACH	969	
C40	2301.503	INTEGRANT CURB DESIGN B6		LIN FT	505	
C41	2301.503	INTEGRANT CURB DESIGN D4		LIN FT	91	
C42	2301.504	CONCRETE PAVEMENT 8"		SQ YD	1465	
C43	2301.508	SUPPLEMENTAL PAVEMENT REINFORCEMENT		POUND	1320	
C44	2301.602	DRILL & GROUT REINF BAR (EPOXY COATED)		EACH	389	
C45	2302.503	JOINT & CRACK REPAIR (TYPE B3)		LIN FT	200	
C46	2302.503	FULL DEPTH REPAIR (TYPE CD-LV)		LIN FT	200	
C47	2302.504	PARTIAL DEPTH REPAIR (TYPE BA)		SQ YD	65	
C48	2360.509	TYPE SP 9.5 WEARING COURSE MIXTURE (3,C)		TON	80	
C49	2411.607	CONCRETE STEPS		CU YD	141	
C50	2451.607	MEDIUM FILTER AGGREGATE (CV)		CU YD	707	
C51	2503.503	12" RC PIPE SEWER DESIGN 3006 CLASS V		LIN FT	204	
C52	2503.503	15" RC PIPE SEWER DESIGN 3006 CLASS V		LIN FT	38	
C53	2503.503	30" RC PIPE SEWER DESIGN 3006 CLASS V		LIN FT	101	
C54	2503.503	48" RC PIPE SEWER DESIGN 3006 CLASS V		LIN FT	231	
C55	2503.602	CONNECT TO EXISTING STORM SEWER		EACH	8	
C56	2504.602	HYDRANT ASSEMBLY		EACH	2	
C57	2504.602	CONNECT TO EXISTING WATER MAIN		EACH	3	
C58	2504.602	2" CORPORATION STOP		EACH	2	
C59	2504.602	1" CURB STOP AND BOX		EACH	2	
C60	2504.602	1" BLOW-OFF		EACH	2	
C61	2504.602	ABOVE GROUND METER AND BACKFLOW PREVENTER		LUMP SUM	1	
C62	2504.603	2" TYPE PE PIPE		LIN FT	166	
C63	2504.603	8" WATERMAIN DUCTILE IRON CL 52		LIN FT	98	
C64	2504.604	3" POLYSTYRENE INSULATION		SQ YD	90	
C65	2506.502	CASTING ASSEMBLY		EACH	12	

C66	2506.502	ADJUST FRAME AND RING CASTING		EACH	2	
C67	2506.503	CONSTRUCT DRAINAGE STRUCTURE DESIGN 48-4020		LIN FT	34	
C68	2506.503	CONSTRUCT DRAINAGE STRUCTURE DESIGN 60-4020		LIN FT	13	
C69	2506.503	CONSTRUCT DRAINAGE STRUCTURE DESIGN 72-4020		LIN FT	6	
C70	2506.503	CONSTRUCT DRAINAGE STRUCTURE DESIGN 84-4020		LIN FT	24	
C71	2520.507	LEAN MIX BACKFILL		CU YD	27	
C72	2521.518	4" CONCRETE WALK		SQ FT	14713	
C73	2521.518	6" CONCRETE WALK		SQ FT	19988	
C74	2531.503	CONCRETE CURB AND GUTTER DESIGN B624		LIN FT	56	
C75	2531.503	CONCRETE CURB AND GUTTER DESIGN D424		LIN FT	951	
C76	2531.503	CONCRETE CURB DESIGN V6		LIN FT	13	
C77	2531.504	6" CONCRETE DRIVEWAY PAVEMENT		SQ YD	17	
C78	2531.618	TRUNCATED DOMES		SQ FT	82	
C79	2540.601	PREFABRICATED LOADING DOCK		LUMP SUM	1	
C80	2540.603	BOARDWALK - CONCRETE BEAM		LIN FT	5271	
C81	2540.603	BOARDWALK - OUTER CONCRETE BEAM		LIN FT	1601	
C82	2540.603	TIMBER NAILER		LIN FT	6872	
C83	2540.618	INSTALL BOARDWALK		SQ FT	14041	
C84	2540.618	FLAGSTONE WITH DECOMPOSED GRANITE		SQ FT	2757	
C85	2545.511	LIGHTING UNIT TYPE SPECIAL		EACH	1	
C86	2545.515	LIGHT FOUNDATION TYPE SPECIAL		EACH	1	
C87	2545.523	2" NON-METALLIC CONDUIT		LIN FT	192	
C88	2545.531	UNDERGROUND WIRE 1 COND NO 8		LIN FT	808	
C89	2545.531	UNDERGROUND WIRE 1 COND NO 12		LIN FT	110	
C90	2564.518	SIGN PANELS TYPE C		SQ FT	64	
C91	2564.602	INSTALL SIGN		EACH	1	
C92	2573.501	STABILIZED CONSTRUCTION EXIT		LUMP SUM	2	
C93	2573.502	CULVERT END CONTROLS		EACH	1	
C94	2573.502	STORM DRAIN INLET PROTECTION		EACH	16	
C95	2573.503	SEDIMENT CONTROL LOG TYPE STRAW		LIN FT	629	
C96	2573.503	FLOTATION SILT CURTAIN TYPE STILL WATER		LIN FT	148	
C97	2574.507	COMMON TOPSOIL BORROW		CU YD	252	
C98	2582.503	4" SOLID LINE PAINT (WR)		LIN FT	217	
C99	2582.503	4" DOUBLE SOLID LINE PAINT (WR)		LIN FT	1104	
C100	2582.518	CROSSWALK PAINT GROUND IN (WR)		SQ FT	178	
CIVIL SUBTOTAL						
CIVIL TRANSPORTATION						
CT1	SCT-09	Steel Sheet Pile Installation (Installation)		SF	63250	
CT2	SCT-02	Double Channel Wale (Installation)		LF	1210	
CT3	SCT-07	Steel Pipe Piles (Installation)		LF	5198	
CT4	SCT-06	Tie Rods and Hardware		LF	3700	
CT5	SCT-08	Helical Anchors		EACH	162	
CT6	SCT-02	Bent Plate Steel Pile Cap (Installation)		LF	1210	
CT7	na	Chain Guardrail Along Dock Wall		EACH	110	
CT8	na	Solid Guardrail Along Dock Wall		LF	276	
CT9	SCT-01	Concrete Storm Retaining Wall		CY	620	
CT10	SCT-04	Storm Doors @ Retaining Wall Opening Locations (8 total)		LS	1	
CT11	SCT-11	New Bollards and New Foundations		EACH	17	
CT12	SCT-07	Steel H Pile for Bollards HP 12 x 63 @ Bollard Locations		LF	1938	
CT13	na	Steel H Pile A Frame HP 14 x 89 @ Bollard Locations		LF	3927	
CT14	na	New Dock Cleats		EACH	26	
CT15	na	Open Graded Aggregate Base		CY	3350	
CT16	SCT-03	Single Row Timber (Rub Rail Fender)		LF	1030	
CT17	na	Safety Ladder		EACH	10	
CT18	SCT-10	Fenders		EACH	4	
CT19	na	Fender Panel Mounting		EACH	4	
CT20	SCT-02	Transfer Beam over H-Piles (Materials & Installation)		LF	215	
CT21	SCT-07	Steel H Piles HP 12 x 53 for Transfer Beam		LF	1260	
CT22	SCT-02	Corner Brace W12x45		LF	25	
CT23	na	Existing Dock Demolition - Cut and Remove Existing SSP		LF	962	
CT24	na	Existing Dock Demolition - Remove Existing Structures in Conflict		LF	204	
CT25	na	Existing Dock Demolition - Remove existing failed sheet pile		LS	1	
CT26	SCH-01	Bedding Stone		TN	100	
CT27	SCH-01	Filter Stone		TN	375	
CT28	SCH-01	Armor Stone		TN	510	
CT29	2108.504	Geotextile		SY	500	
CT31	2574.507	Topsoil Borrow		CY	50	
CT32	na	Outfall Alcove		LS	1	
CT33	na	Seawall Openings for Storm Pipes & Cooling Pipe		EACH	4	
CT34	na	Flowable Fill Sheet Pile Outpans		CY	14	
CT35		6" Corrugated Steel Pipe		LF	16	
CT36		Excavation - Rock		LS	1	
CT37		Salvage - Rock		LS	1	
CT38	SCT-01	H-Pile frame pile cap for bollard tiebacks		EA	17	
CIVIL TRANSPORTATION SUBTOTAL						
LANDSCAPE						
L1	SA-8	Pergola (2 units)		LS	1	
L2	na	Weathered Steel Wall Edge		LF	90	
L3	SA-6	Artificial Turf		SF	800	
L4	SA-9	Turf Sod		SQ	20418	
L5	na	Planting Bed - Native Perrenials		0	0	
L6	SA-10	Hardwood Mulch - 3"		CY	80	
L7	SA-10	Topsoil - 4"		CY	350	

L8	SA-10	#1 Perennial		EA	2435	
L9	SA-10	#2 Perennial		EA	165	
L10	na	Structural Soils		CY	450	
L11	SA-10	Planting Soils		CY	1000	
L12	SA-10	Coniferous Tree		EA	3	
L13	SA-10	Deciduous Trees		EA	25	
L14	SA-10	Steel Planting Bed Edging		LF	150	
L15	na	Water Meter Enclosure		EA	1	
L16	SA-8	Trash/Recycling Receptable		EA	16	
L17	SA-8	Backless Bench 2		EA	6	
L18	SA-8	Bike Racks		EA	8	
L19	SA-8	Drinking Fountains		EA	1	
L20	SA-8	Backless Bench		EA	2	
L21	SA-8	Backed Bench		EA	8	
L22	SA-8	Wave Seating		EA	10	
L23	SA-8	Stacked Bench Seating		EA	1	
L24	SA-8	Picnic Table		EA	4	
L25	SA-8	Lounge Seating		EA	17	
L26	SA-8	Seat topper		EA	25	
L27	SA-8	LOLL Adirondack Chairs		EA	14	
L28	na	Seat Wall (2'x2') with decorative finish		LF	134	
L29	na	Seat Wall (3'x2') with decorative finish		LF	70	
L30	na	Seat Wall (20"x2')		LF	295	
L31	SA-2	Wall Mounted Monument Sign		EA	1	
L32	SA-2	Freestanding Monument Sign		EA	1	
L33	na	Inset Topographic Metal Wall Markings		EA	3	
L34	SA-7	Solid Wall Mounted Security Gate		EA	2	
L35	SA-7	Foldable Wall Mounted Security Gate		EA	2	
L36	na	Seat Wall (4'x2')		LF	282.5	
L37	SA-1	Railings		EA	4	
L38	SA-8	Removable Traffic Bollard		EA	5	
L39	SA-1	Surface Mounted Bar Railing		LF	30	
L40		Cobblestone Paver		SF	950	
L41		Skate Stoppers		EA	350	
LANDSCAPE SUBTOTAL						
STRUCTURAL						
S1	2104.501	Remove Great Lakes Aquarium Loading Dock Retaining Wall		LS	1	
S2	na	Remove & Replace GLA Loading Dock Concrete Pavement		LS	1	
S3	SCT-01	New Retaining Wall at Cul-de-sac		CY	165	
S4	SCT-08	New Retaining Wall at Cul-de-sac Helical Piles		Each	25	
S5	SCT-01	Boardwalk Retaining Wall Section		CY	56	
S6	SCT-01	Pergola Foundations		CY	24	
STRUCTURAL SUBTOTAL						
ELECTRICAL						
E1	265600	DECORATIVE POLE LIGHTING		EACH	11	
E2	260500	RELOCATE EXISTING POST TOP LIGHTING		EACH	2	
E3	260533	VENDOR POWER & COMMUNICATIONS CABINETS		EACH	2	
E4	na	UTILITY WORK (4" CONDUIT PROVISIONS ONLY)		LIN FT	0	
E5	262416	200A CIRCUIT BREAKERS		EACH	2	
E6	260519	SITE LIGHTING WIRE #8		LIN FT	1500	
E7	260533	SITE LIGHTING CONDUIT 2"		LIN FT	1500	
E8	260519	VENDOR CABINET FEEDER #4/0		LIN FT	500	
E9	260533	VENDOR FEEDER CONDUIT 3"		LIN FT	500	
E10	262726	20A POLE MTD RECEPT		EACH	6	
E11	262726	50A POLE MTD RECEPT		EACH	6	
E12	260519	20A POLE MTD RECEPT WIRE #6		LIN FT	1000	
E13	260533	20A POLE MTD RECEPT CONDUIT 2"		LIN FT	1000	
E14	260519	50A POLE MTD RECEPT WIRE #6		LIN FT	1000	
E15	260533	50A POLE MTD RECEPT CONDUIT 2"		LIN FT	1000	
E16	271500	SECURITY CAMERA FIBER		LIN FT	500	
E17	271500	SECURITY CAMERA CAT 5E		LIN FT	1500	
E18	271500	VENDOR FIBER		LIN FT	500	
E19	270500	VENDOR RUGGED SWITCH		EACH	2	
E20	270500	VENDOR CABINET PUNCH DOWN		EACH	4	
E21	260533	HAND HOLES		EACH	6	
E22	265600	PERGOLA LIGHTING FEATURE		EACH	1	
E23	265600	STEP LIGHTING		EACH	2	
E24	260500	MARINE PEDESTALS - RE-INSTALL VISTA		EACH	2	
E25	260500	DEMOLITION		EACH	1	
E26	265600	RETAINING WALL LIGHTING		EACH	9	
E27	265600	WAVE WALL LIGHTING		EACH	21	
E28	260943	LIGHTING CONTROL SYSTEM		EACH	1	
ELECTRICAL SUBTOTAL						
TOTAL PROJECT COST						
ADD ALTERNATES - Order of Add Alternatives will be determined by the City based on bid price						
AACT35	SCT-10	Fenders		EACH	2	
AACT36		Fender Panel Mounting Frame		EACH	2	
AAL01		Stacked Granite wall (60 feet)		LUMP SUM	1	
AAL02		Seat Wall (2'x2')		LF	132	
ABL01		Custom Hammock Poles		EA	6	

ACL01		Backless Bench		EA	2	
ACL02		Backed Bench		EA	4	
ACL03		Stacked Bench Seating		EA	1	
ADL01		Perforated Metal Panel		EA	2	
AAE01		IRVIN POWER & COMMUNICATIONS CABINET		EACH	1	
AAE02		POWER PEDESTAL		EACH	1	
ADD ALTERNATE TOTAL						



**Purchasing Division**  
Finance Department  
Room 120  
411 West First Street  
Duluth, Minnesota 55802

218-730-5340  
purchasing@duluthmn.gov

## LABOR COST BIDDING DATA

Solicitation No.: 23-AA07  
Project Title: Duluth Coastal Infrastructure Rehabilitation Project

Funding sources for City of Duluth projects determine what wages and work hours are required. The project identified above includes the funding sources checked below.

- ☒ Federal funds (EDA)
- ☒ State funds (Bonds)
- ☒ City funds
- ☐ Other:

Per the Duluth City Code and the Davis Bacon and Related Acts, prevailing wages must be paid on projects of \$2,000 or more. The prevailing wage decisions included in this project are listed below. If multiple wage decisions cover the work, bidders are required to pay the higher wage:

1. Federal Heavy MN20230040, effective 6/30/2023
2. Federal Heavy IL20230018 (Dredging & Marine), effective ~~1/6/2023~~ 7/14/2023
3. Federal Highway MN20230056, effective 1/6/2023
4. MN State Highway-Heavy Region 01, effective 11/14/2022
5. MN State Truck Rental Rates, effective 12/19/2022

This project will also include a project labor agreement (PLA) if \$150,000 or more. Please note that union scale wage may or may not be higher than the minimum prevailing wages required. If a PLA is included, bidders are required to pay the higher of either the union labor rates or the wage decisions included, and pay fringe benefits as identified in the PLA.

Overtime rate to be paid at no less than 1 ½ times the rate of pay, plus fringe, as established in the project's wage decision OR 1 ½ times the base rate the employee is being paid, plus fringe; whichever is higher. Overtime must be paid on:

- ☒ hours worked in excess of 8 hours per day (even if less than 40 hours worked in a week) and hours worked in excess of 40 hours per week
- ☐ hours worked in excess of 40 hours per week
- ☐ hours worked in excess of 8 hours per day and 40 hours per week, unless the bidder has an existing union labor agreement allowing different hours as prescribed in section 2-26 of the City Code.



Superseded General Decision Number: IL20220018

State: Illinois

Construction Types: Heavy (Dredging and Marine)

Counties: Illinois Statewide.

MECHANICAL DREDGING (CLAMSHELL, DRAGLINE, AND BACKHOE) AND MARINE CONSTRUCTION):

ILLINOIS, INDIANA, MICHIGAN, MINNESOTA, NEW YORK, OHIO, PENNSYLVANIA AND WISCONSIN DREDGING AND MARINE CONSTRUCTION Dredging and Marine Construction Projects: floating/land equipment engaged in clamshell, backhoe and dragline dredging, marine construction, bridges, salvage operations and cranes, loaders, dozers, or other equipment used for disposal of dredge spoils or marine construction materials on land at the slip or dock, at the project site, where the above material/spoils is being handled, and all equipment utilized on breakwall/breakwater structures on the Great Lakes, Islands therein, their connecting and tributary waters, including the Illinois Waterway to the Lock at Lockport, Illinois, the New York State Barge Canal System between Tonawanda, New York and Waterford, New York and Oswego, New York, the Duluth-Superior area to the Fond du Lac Bridge Crossing (Minnesota State Highway 23) on the St. Louis River and on the St. Lawrence River eastward to the International Boundary near St. Regis, New York.

Note: Contracts subject to the Davis-Bacon Act are generally required to pay at least the applicable minimum wage rate required under Executive Order 14026 or Executive Order 13658. Please note that these Executive Orders apply to covered contracts entered into by the federal government that are subject to the Davis-Bacon Act itself, but do not apply to contracts subject only to the Davis-Bacon Related Acts, including those set forth at 29 CFR 5.1(a)(2)-(60).

If the contract is entered into on or after January 30, 2022, or the contract is renewed or extended (e.g., an option is exercised) on or after January 30, 2022:	<ul style="list-style-type: none"><li>. Executive Order 14026 generally applies to the contract.</li><li>. The contractor must pay all covered workers at least \$16.20 per hour (or the applicable wage rate listed on this wage determination, if it is higher) for all hours spent performing on the contract in 2023.</li></ul>
If the contract was awarded on or between January 1, 2015 and January 29, 2022, and the contract is not renewed or extended on or after January 30, 2022:	<ul style="list-style-type: none"><li>. Executive Order 13658 generally applies to the contract.</li><li>. The contractor must pay all covered workers at least \$12.15 per hour (or the applicable wage rate listed on this wage determination, if it is higher) for all hours spent performing on that contract in 2023.</li></ul>

The applicable Executive Order minimum wage rate will be adjusted annually. If this contract is covered by one of the Executive Orders and a classification considered necessary for performance of work on the contract does not appear on this wage determination, the contractor must still submit a conformance request.

Additional information on contractor requirements and worker protections under the Executive Orders is available at <http://www.dol.gov/whd/govcontracts>.

Modification Number	Publication Date
0	01/06/2023
1	07/14/2023

\* SUIL2003-001 06/01/2023

MECHANICAL DREDGING (CLAMSHELL, DRAGLINE, AND BACKHOE) AND MARINE CONSTRUCTION):

	Rates	Fringes
Dredging:		
Fireman, Oiler, Deckhand, & Scowman (with dipper, hydraulic or other floating equipment engaged in hydraulic and dipper dredging operations)		
Pipeline men (both afloat & ashore including loading, unloading, maintaining, and handling pipelines for hydraulic dredges and sandboats		
Rangeman, Tankerman, Sweepman and service Truck Driver.....	\$ 22.51	7.61+a+b
Lead Deckhand.....	\$ 29.68	7.61+a+b
Hydraulic Dredging		
LAUNCH OPERATOR - Vessel		
800 Horse- Power Or Less....	\$ 25.15	7.61+a+b
TUG ENGINEER.....	\$ 26.49	7.61+a+b
TUG OPERATOR - Vessel Over		
800 Horse-Power.....	\$ 26.49	7.61+a+b
TUG WORKERS: Fireman, Lineman, Oiler, Deckhand, Tankerman. Scowman, (on/or with tugboats, launches, or other self-propelled boats).....	\$ 22.51	7.61+a+b
MECHANIC (Undefined)		
FLOATING EQUIPMENT:		
Illinois		
Class I.....	\$ 59.35	43.00+b&c
Class II-A.....	\$ 57.85	43.00+b&c
Class II-B.....	\$ 60.85	43.00+b&c
Class III.....	\$ 51.50	43.00+b&c
Class IV.....	\$ 42.80	43.00+b&c
FLOATING EQUIPMENT: Indiana		
Class I.....	\$ 49.30	36.50+b&c
Class II-A.....	\$ 47.80	36.50+b&c
Class II-B.....	\$ 49.80	36.50+b&c
Class III.....	\$ 42.55	36.50+b&c
Class IV.....	\$ 35.40	36.50+b&c
FLOATING EQUIPMENT:		
Michigan		
Class I.....	\$ 47.00	31.72+b&c
Class II-A.....	\$ 45.50	31.72+b&c
Class II-B.....	\$ 47.00	31.72+b&c
Class III.....	\$ 40.95	31.72+b&c
Class IV.....	\$ 34.75	31.72+b&c
FLOATING EQUIPMENT:		
Minnesota		
Class I.....	\$ 48.95	21.55+b&c
Class II-A.....	\$ 47.45	21.55+b&c
Class II-B.....	\$ 47.95	21.55+b&c
Class III.....	\$ 42.23	21.55+b&c
Class IV.....	\$ 35.11	21.55+b&c
FLOATING EQUIPMENT:		
New York:(Albany, Herkimer, Montgomery, Saratoga and Schenectady Counties)		

Class I.....	\$ 54.75	28.40+b&c
Class II-A.....	\$ 53.25	28.40+b&c
Class II-B.....	\$ 56.25	28.40+b&c
Class III.....	\$ 47.40	28.40+b&c
Class IV.....	\$ 39.40	28.40+b&c
FLOATING EQUIPMENT:		
New York:(Cattaraugus, Chautauga, Erie, Niagara and Orleans Counties)		
Class I.....	\$ 48.80	32.14+b&c
Class II-A.....	\$ 47.30	32.14+b&c
Class II-B.....	\$ 50.30	32.14+b&c
Class III.....	\$ 42.10	32.14+b&c
Class IV.....	\$ 35.00	32.14+b&c
FLOATING EQUIPMENT:		
New York:(Cayuga, Jefferson, Madison, Oneida, Oswego and St. Lawrence Counties)		
Class I.....	\$ 51.60	27.15+b&c
Class II-A.....	\$ 50.10	27.15+b&c
Class II-B.....	\$ 53.10	27.15+b&c
Class III.....	\$ 44.60	27.15+b+c
Class IV.....	\$ 37.10	27.15+b&c
FLOATING EQUIPMENT:		
New York:(Monroe, Ontario and Wayne Counties and the City of Rochester)		
Class I.....	\$ 52.45	30.73+b&c
Class II-A.....	\$ 50.95	30.73+b&c
Class II-B.....	\$ 53.95	30.73+b&c
Class III.....	\$ 45.35	30.73+b&c
Class IV.....	\$ 37.70	30.73+b&c
FLOATING EQUIPMENT:		
Ohio:(Ashtabula, Cuyahoga, Erie,Lake, and Lorain Counties)		
Class I.....	\$ 48.39	15.55+b&c
Class II-A.....	\$ 46.89	15.55+b&c
Class II-B.....	\$ 46.89	15.55+b&c
Class III.....	\$ 41.97	15.55+b&c
Class IV.....	\$ 34.74	15.55+b&c
FLOATING EQUIPMENT:		
Ohio:(Lucas, Henry, Ottawa, Wood and Sandusky Counties)		
Class I.....	\$ 47.00	15.55+b&c
Class II-A.....	\$ 45.50	15.55+b&c
Class II-B.....	\$ 45.50	15.55+b&c
Class III.....	\$ 40.95	15.55+b&c
Class IV.....	\$ 34.75	15.55+b&c
FLOATING EQUIPMENT:		
Pennsylvania:(Erie County):		
Class I.....	\$ 47.00	22.73+b&c
Class II-A.....	\$ 45.50	22.73+b&c
Class II-B.....	\$ 48.50	22.73+a&b
Class III.....	\$ 40.95	22.73+b&c
Class IV.....	\$ 34.75	22.73+b&c
FLOATING EQUIPMENT:		
Wisconsin:Includes all marine/floating type work on projects in the Superior/Duluth Harbor, Lake Superior.		
Class I.....	\$ 51.85	27.48+b+c
Class II-A.....	\$ 50.35	27.48+b&c
Class II-B.....	\$ 53.35	27.48+b&c
Class III.....	\$ 45.85	27.48+b&c
Class IV.....	\$ 41.35	27.48+b&c

PAID HOLIDAYS (WHERE APPLICABLE):

- A- NEW YEAR'S DAY
- B- MEMORIAL DAY
- C- INDEPENDENCE DAY
- D- LABOR DAY
- E- THANKSGIVING DAY
- F- CHRISTMAS DAY
- G- PRESIDENT'S DAY

H- VETERANS DAY.

FOOTNOTES:

- a. \$30.10 per day per employee for medical
- b. Eight paid holidays: A thru H
- c. Hazardous/Toxic Waste Material:
  - \*Level A \$2.50 per hour
  - \*Level B 2.00 per hour
  - \*Level C 1.00 per hour
  - \*Level D 0.50 per hour

Such wages shall be above the classifications of work listed under mechanical dredging and Marine construction of this general wage decision. \*Working with Hazardous Waste at this level as defined by the U. S. Enviromental Protection Agency.

CLASSIFICATION DESCRIPTIONS

- Class I - Master Mechanic - assist and direct
- Class II, Class III, and Class IV, diver/wet tender, engineer (hydraulic dredge)
- Class II-A Crane/Backhoe Operator, 70 Ton or over Tug Operator, Mechanic/Welder, assistant engineer(hydraulic dredge), leverman (hydraulic dredge), diver tender
- Class II-B Friction, Lattice Boom, or any Crane Certifications
- Class III - Deck Equipment Operator (Machineryman) Maintenance of Crane (over 50 ton capacity) or Backhoe (115,000 pounds or more), Tug/launch operator, Loader/dozer and like equipment on Barge, breakwater wall, slip/dock, Scow, Deck Machinery, etc.
- Class IV - Deck Equipment Operator(Machineryman/Fireman) (Four equipment units or more) Off Road Trucks, Deck Hand, Tug Engineer and Crane Maintenance 50 ton capacity and under or Backhoe weighing 115,000 pounds or less, assistant tug operator.

-----  
WELDERS - Receive rate prescribed for craft performing operation to which welding is incidental.

=====

Note: Executive Order (EO) 13706, Establishing Paid Sick Leave for Federal Contractors applies to all contracts subject to the Davis-Bacon Act for which the contract is awarded (and any solicitation was issued) on or after January 1, 2017. If this contract is covered by the EO, the contractor must provide employees with 1 hour of paid sick leave for every 30 hours they work, up to 56 hours of paid sick leave each year. Employees must be permitted to use paid sick leave for their own illness, injury or other health-related needs, including preventive care; to assist a family member (or person who is like family to the employee) who is ill, injured, or has other health-related needs, including preventive care; or for reasons resulting from, or to assist a family member (or person who is like family to the employee) who is a victim of, domestic violence, sexual assault, or stalking. Additional information on contractor requirements and worker protections under the EO is available at <https://www.dol.gov/agencies/whd/government-contracts>.

Unlisted classifications needed for work not included within the scope of the classifications listed may be added after award only as provided in the labor standards contract clauses (29CFR 5.5 (a) (1) (ii)).

-----

The body of each wage determination lists the classification and wage rates that have been found to be prevailing for the cited type(s) of construction in the area covered by the wage determination. The classifications are listed in alphabetical order of ""identifiers"" that indicate whether the particular rate is a union rate (current union negotiated rate for local),

a survey rate (weighted average rate) or a union average rate (weighted union average rate).

Union Rate Identifiers

A four letter classification abbreviation identifier enclosed in dotted lines beginning with characters other than ""SU"" or ""UAVG"" denotes that the union classification and rate were prevailing for that classification in the survey. Example: PLUM0198-005 07/01/2014. PLUM is an abbreviation identifier of the union which prevailed in the survey for this classification, which in this example would be Plumbers. 0198 indicates the local union number or district council number where applicable, i.e., Plumbers Local 0198. The next number, 005 in the example, is an internal number used in processing the wage determination. 07/01/2014 is the effective date of the most current negotiated rate, which in this example is July 1, 2014.

Union prevailing wage rates are updated to reflect all rate changes in the collective bargaining agreement (CBA) governing this classification and rate.

Survey Rate Identifiers

Classifications listed under the ""SU"" identifier indicate that no one rate prevailed for this classification in the survey and the published rate is derived by computing a weighted average rate based on all the rates reported in the survey for that classification. As this weighted average rate includes all rates reported in the survey, it may include both union and non-union rates. Example: SULA2012-007 5/13/2014. SU indicates the rates are survey rates based on a weighted average calculation of rates and are not majority rates. LA indicates the State of Louisiana. 2012 is the year of survey on which these classifications and rates are based. The next number, 007 in the example, is an internal number used in producing the wage determination. 5/13/2014 indicates the survey completion date for the classifications and rates under that identifier.

Survey wage rates are not updated and remain in effect until a new survey is conducted.

Union Average Rate Identifiers

Classification(s) listed under the UAVG identifier indicate that no single majority rate prevailed for those classifications; however, 100% of the data reported for the classifications was union data. EXAMPLE: UAVG-OH-0010 08/29/2014. UAVG indicates that the rate is a weighted union average rate. OH indicates the state. The next number, 0010 in the example, is an internal number used in producing the wage determination. 08/29/2014 indicates the survey completion date for the classifications and rates under that identifier.

A UAVG rate will be updated once a year, usually in January of each year, to reflect a weighted average of the current negotiated/CBA rate of the union locals from which the rate is based.

-----

WAGE DETERMINATION APPEALS PROCESS

1.) Has there been an initial decision in the matter? This can be:

- \* an existing published wage determination
- \* a survey underlying a wage determination
- \* a Wage and Hour Division letter setting forth a position on a wage determination matter
- \* a conformance (additional classification and rate) ruling

On survey related matters, initial contact, including requests for summaries of surveys, should be with the Wage and Hour National Office because National Office has responsibility for



the Davis-Bacon survey program. If the response from this initial contact is not satisfactory, then the process described in 2.) and 3.) should be followed.

With regard to any other matter not yet ripe for the formal process described here, initial contact should be with the Branch of Construction Wage Determinations. Write to:

Branch of Construction Wage Determinations  
Wage and Hour Division  
U.S. Department of Labor  
200 Constitution Avenue, N.W.  
Washington, DC 20210

2.) If the answer to the question in 1.) is yes, then an interested party (those affected by the action) can request review and reconsideration from the Wage and Hour Administrator (See 29 CFR Part 1.8 and 29 CFR Part 7). Write to:

Wage and Hour Administrator  
U.S. Department of Labor  
200 Constitution Avenue, N.W.  
Washington, DC 20210

The request should be accompanied by a full statement of the interested party's position and by any information (wage payment data, project description, area practice material, etc.) that the requestor considers relevant to the issue.

3.) If the decision of the Administrator is not favorable, an interested party may appeal directly to the Administrative Review Board (formerly the Wage Appeals Board). Write to:

Administrative Review Board  
U.S. Department of Labor  
200 Constitution Avenue, N.W.  
Washington, DC 20210

4.) All decisions by the Administrative Review Board are final.

=====  
END OF GENERAL DECISIO"