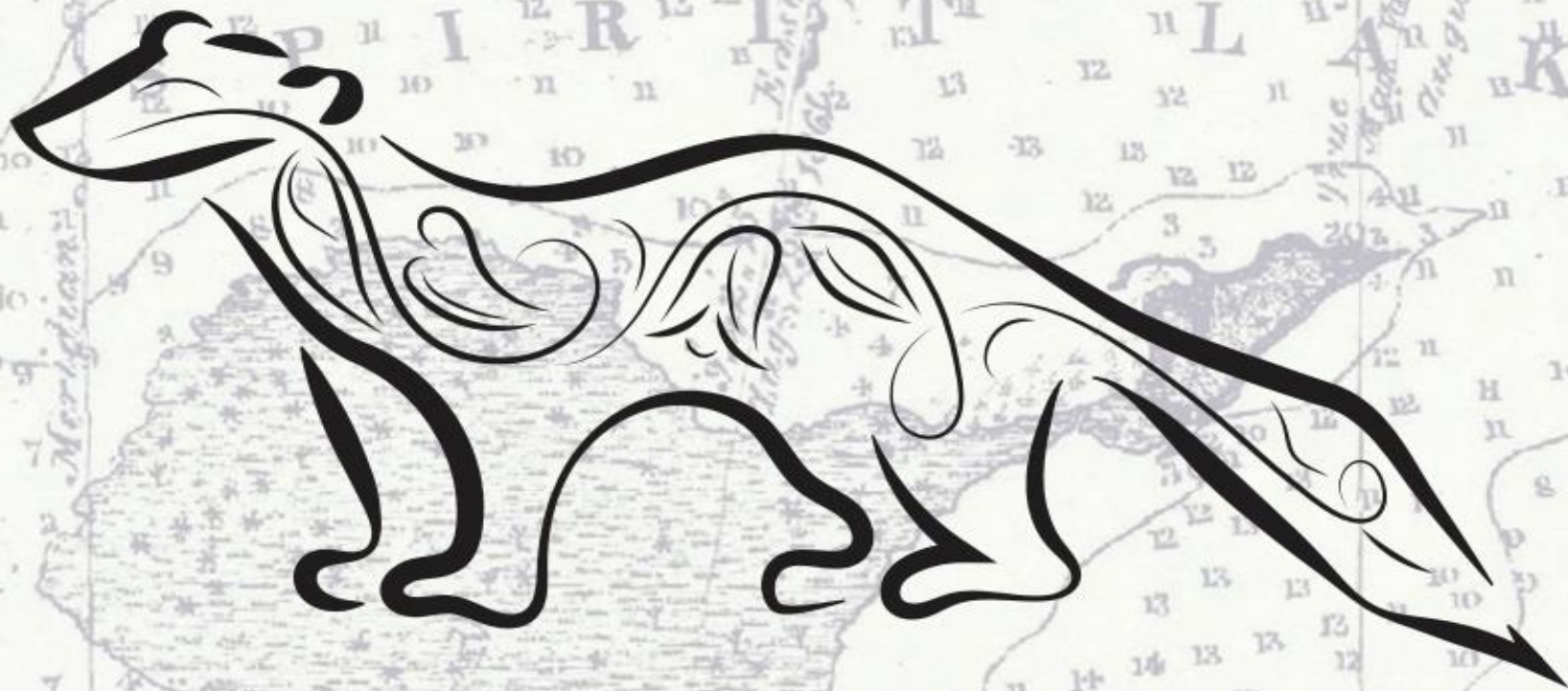




Duluth Parks
& Recreation

WAABIZHESHIKANA



MARTEN TRAIL



A public planning process began in August 2016 to determine the future recreational uses of a mostly City-owned, 10-to-12-mile corridor along the St. Louis River between the Irving neighborhood and Jay Cooke State Park, in West Duluth. The study area includes an existing 3.3 mile long pedestrian trail, an historic rail bed, and five existing or planned river access points. A portion of the historic rail bed has been leased by the City of Duluth to the nonprofit Lake Superior and Mississippi Railroad for seasonal fee-based rail excursions.

Overall Project Goals

The Master Plan's overall project goals include, but are not limited to:

- Increasing connectivity from adjacent neighborhoods to the St. Louis River and Estuary.
- Increasing recreational and development opportunities within and along the St. Louis River Corridor.
- Facilitating a stakeholder community engagement process to gain significant input on the future use of the area.
- Enhancing neighborhood quality of life.
- Restoring and protecting natural habitat along the trail corridor.
- Determine whether to retain and potentially improve the remaining riverfront rail line and renew the Lake Superior and Mississippi railroad's lease for excursion rail trips.

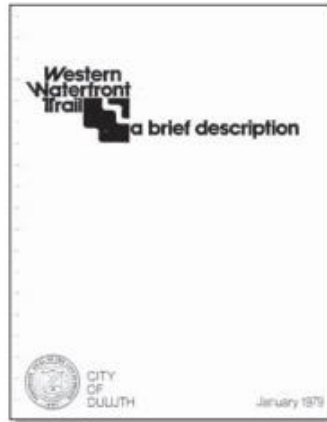
Master Planning Process

With these project goals in mind, the master planning process will explore options to:

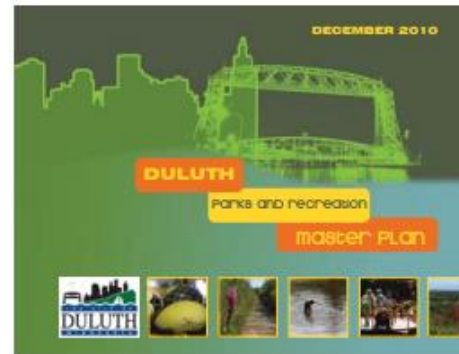
- Extend and improve the Western Waterfront Trail as cited in the 1979 WWFT Master Plan.
- Re-brand the Western Waterfront Trail as a heritage trail that celebrates and interprets the rich culture and natural heritage of the corridor.
- Develop potential new river access nodes opposite Tallas Island and at the area known as Slag Point.
- Develop potential new canoe/kayak water trail entry points at Munger Landing, Boy Scout Landing, and Perch Lake.
- Decide the future use of the City-owned riverfront.
- Create synergy between the Water Trail, the Western Waterfront Trail, and the excursion rail (if the City determines to extend the excursion rail lease).



Prior Vision + Overlapping Initiatives



1979 Plan



2010 Parks and Recreation Plan



2011 Bikes and Trailway Plan



2012 Morgan Park
Neighborhood
Revitalization Plan



2015 Riverside Small Area
Plan & 2013 Gary New-
Duluth Small Area Plan



2015-2020 St. Louis River
Corridor Projects



River Restoration Remediation Sites
in the St. Louis River AOC



Summary

- Five workshop meetings occurred from September —January (3 hrs duration)

• Topics included:

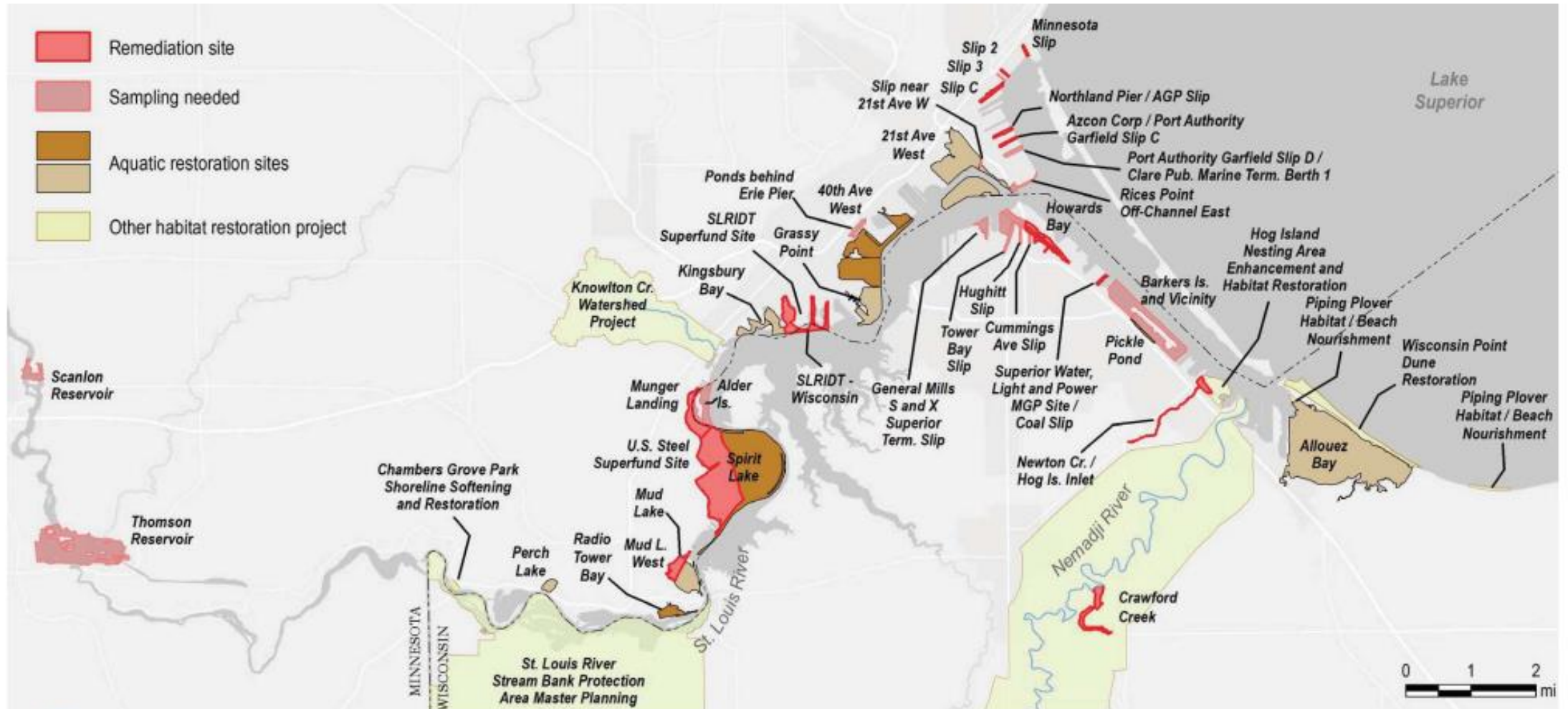
1. Planning for interpretation and branding implementation
2. Riverfront green space
3. St. Louis River access and put-in sites
4. Trail extension and rail options
5. Planning for trail extension possibilities

Stakeholder Attendees (39)

- Carole Newkumet, *Riverside Community Club*
- Andy Webb, *Lake Superior and Mississippi Railroad*
- Dwight Morrison, *Wheels on Trails*
- Dave Moore, *Railway Solutions/LS&M*
- Joel Manns, *Lake Superior and Mississippi Railroad*
- Dean Votgman, *Parks and Rec Commission, District 5*
- Mike Casey, *Friends of West Duluth Parks and Trails*
- Wayne Dupuis, *Fond-du-Lac Band of Lake Superior Chippewa*
- Jill Hoppe, *Fond-du-Lac Band of Lake Superior Chippewa*
- Jack Ezell, *Western Lake Superior Sanitary District*
- Daryl Peterson, *Minnesota Land Trust*
- Hansi Johnson, *Minnesota Land Trust*
- Rick Staffon, *Izaak Walton League*
- Denette Lynch, *Friends of West Duluth Parks and Trails*
- Charlie Staudahar, *Spirit Lake Development*
- Bill Majewski, *Morgan Park Community Club - SLRA*
- Amanda Crosby, *Parks and Rec Commission - Disability Rep*
- Alison J. Clarke, *Friends of West Duluth Parks and Trails*
- Harry Hanson, *Friends of West Duluth Parks and Trails*
- Virginia Olson, *Friends of West Duluth Parks and Trails*
- Joel Manus, *Lake Superior and Mississippi Railroad*
- Brad Massengill, *Lake Superior and Mississippi Railroad*
- Debbie Isabell-Nelson, *Morgan Park Community Club*
- Lisa Angelos, *MnDNR - Jay Cooke State Park*
- John Lindgren, *MnDNR*
- Erin Endsley, *MN Pollution Control Agency*
- Glenn Merrick, *Izaak Walton League*
- David Bolgrien, *Environmental Pollution Control Agency*
- Deb DeLuca, *Duluth Seaway Port Authority*
- Will Munger, *Izaak Walton League*
- Mike Bares, *MN Pollution Control Agency*
- Scott Cieniawski, *Environmental Protection Agency*
- Keith Okeson, *Lake Superior Muskies*
- Pat Okeson, *Lake Superior Muskies*
- Craig Sterle, *Izaak Walton League*
- Kevin Johnson, *MnDNR - Parks and Trails - Two Harbors*
- Charlie Nelson, *Twin Ports Walleye Association*
- Dave Nelson, *Twin Ports Walleye Association*
- Russ Francisco, *Marine General*



River Restoration & Conservation Activities Map





Munger Landing Remedial Action Project

St. Louis River
Area of Concern Project

Funded by EPA-Great Lakes
National Program Office,
Minnesota PCA, Wisconsin
DNR, and industrial partners
in collaboration with U. S.
Army Corps of Engineers

Presented by: Casey Evenson
Project Superintendent for J.F.
Brennan Company, Inc.





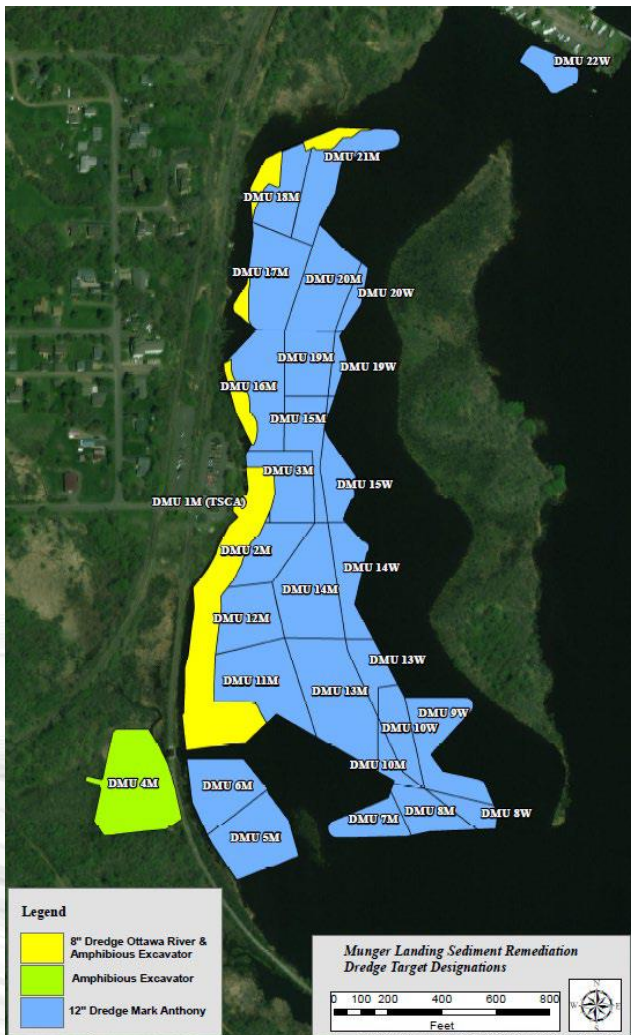
Munger Landing Remedial Action Project

Summer and Fall 2022 Progress

- Removed approximately 900 CY of material from the upland area at Munger Landing.
- Cleared debris from the work areas and utilized three dredges to remove approximately 53,000 CY of material from the St. Louis River.

Winter 2023 Progress

- Removed approximately 7,000 CY of material from DMU 4.





Munger Landing Remedial Action Project

Summer/Fall 2023 Operations

- Wisconsin Dredging – Late June to late July
 - Will utilize an 8 IN and a 12 IN hydraulic swinging ladder dredges with a common transport slurry line.
 - Two dredges will pump through three common booster pumps utilizing the common weighted pipeline to Hallett Dock #7.
- Minnesota Dredging – Early August to early September
 - Will use the same two-dredge system as utilized in Wisconsin.
 - The areas remaining to be dredged are from Munger Landing north to Spirit Lake Marina.
- Cover Placement – Early August to early October
 - Operations will begin in DMU 4 and then transition to the river portion of the project working downstream to upstream.
 - Cover material will be pumped hydraulically utilizing a separate weighted pipeline from Hallett Dock #7 to the patented Brennan Broadcast Capping System.





Munger Landing Remedial Action Project

Fall/Winter 2023 Operations

Dewatering and Water Treatment

- The dredges will convey sediment slurry to geotextile tubes located at the Hallett Dock #7 dewatering pad; the tubes may be stacked in three layers.
- A pump will pull water from the collection reservoir to be treated through filters and treatment vessels before returning to the St. Louis River.
- Water treatment and water quality monitoring will continue through the loadout of the 2023 dredge material to ensure the discharge meets water quality standards.





Munger Landing Remedial Action Project



Fall/Winter 2023

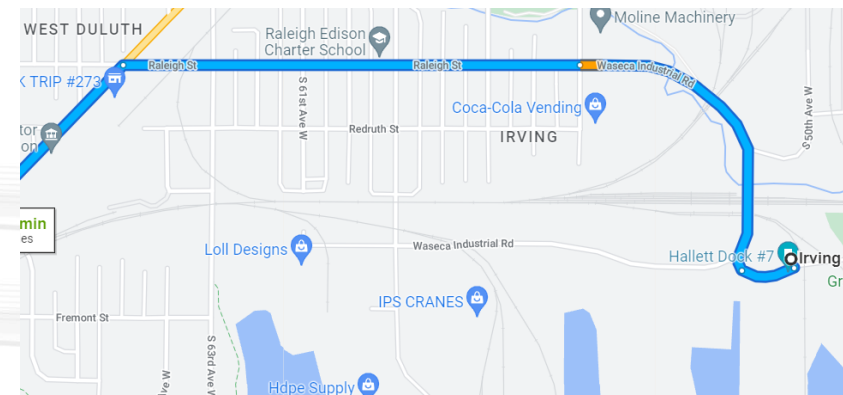
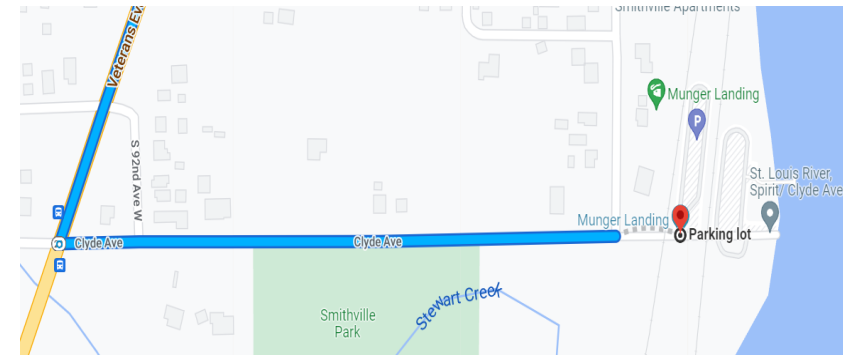
- Demobilization
 - All dredging and cover placement equipment will be demobilized from the project.
- Material Loadout
 - Expected to be conducted from October to December.
 - Final demobilization will be conducted at the conclusion of loadout activities.
- Restoration
 - Hallett Dock #7 will be restored back to their pre-existing conditions.
 - Plantings and seeding are to take place in the Fall of 2023 and spring of 2024 at Munger Landing.



Munger Landing Remedial Action Project

Truck Routes

- Munger Landing
 - Truck traffic to/from Munger Landing will use Grand Avenue to Clyde Avenue.
 - No permanent road closures are expected.
 - Public access to Munger Landing will be suspended until Spring 2024.
- Hallett Dock #7
 - Truck traffic to/from Hallett Dock will utilize Grand Avenue to Raleigh Street/Waseca Industrial Road (North Central Avenue once construction begins on Raleigh Street).
 - No road closures are expected.
- Speed limits will be strictly followed by all vehicles, and it will be emphasized to all drivers that there are residential areas near both sites and to be vigilant of all residents.





Munger Landing Remedial Action Project



Safety Reminders

- Munger Landing
 - Munger Landing along with the upper and lower parking lots are closed throughout the project; please do not block access to this area.
 - Please stay clear of our floating equipment and work areas on the St. Louis River. Floating signage will be posted outside of the work areas.
- Hallett Dock #7
 - This is private property; no public access is allowed.



Munger Landing Remedial Action Project

J.F. Brennan Contacts

For any operational questions, please contact:

Casey Evenson – Project Superintendent

cevenson@jfbrennan.com

For any safety-related questions, please contact:

Michael Slater – Site Safety and Health Officer

[mslater@jfbrennan.com](mailto:m Slater@jfbrennan.com)



An aerial photograph of Spirit Lake, showing a large area of exposed sediment and a dam structure. The lake is surrounded by green trees and a road. The sediment area is a mix of brown and yellow colors, indicating different layers of earth and sand. The dam is a long, low structure that spans across the lake, with a road on top. The water is a deep blue color, and the sky is a light blue. The overall scene is a mix of natural and man-made elements.

Spirit Lake GLLA Project Update

Waabizheshikana Public Outreach Event

Courtney Winter - U.S. EPA Great Lakes National

June 21, 2023




Agenda

- Project Progress Update
- Upcoming Work
 - Pedestrian Trail Updates

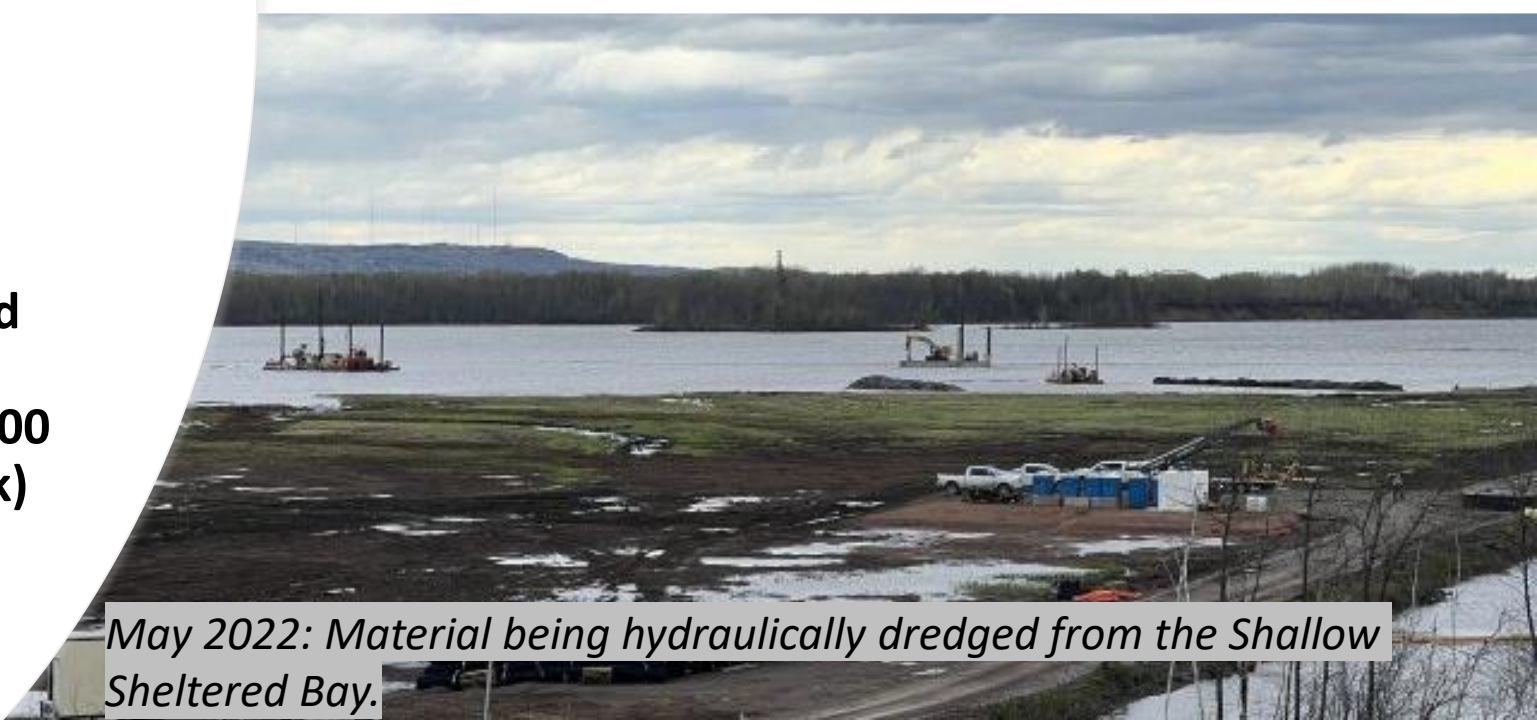
Spirit Lake GLLA Project Progress Update

Completed work

- Dredging:
 - **1.3 million cubic yards** remediated.
 - Approximately **460,000 CY** of impacted sediment and soils were removed from the project area & stored in onsite CDFs
 - **425,000 CY** of this, was dredged from within the river and Unnamed Creek (or over 100,000 loads in a full-size pick-up truck)

An aerial photograph showing a large-scale dredging operation in a bay. A long, dark, curved strip of material, likely sediment, is being processed by a yellow excavator. The surrounding area is covered in snow and ice, indicating a winter or early spring setting. The water is dark and turbulent.

January 2022: Mechanical dredging of the Shallow Sheltered Bay.

A wide-angle photograph of a bay or river mouth. In the foreground, there's a muddy, dark area with some snow patches. In the middle ground, several barges and dredging equipment are visible in the water. The background shows a line of trees and hills under a cloudy sky.

May 2022: Material being hydraulically dredged from the Shallow Sheltered Bay.

Spirit Lake GLLA Project Progress Update

Completed work

- **Capping:**
 - **850,000 cubic yards** within the estuary and Unnamed Creek.
 - **~100 acres** (or 76 football fields) capping within the estuary and Unnamed Creek.
- **Enhanced Natural Recovery (ENR):**
 - **12 acres** of in-water work areas have been covered with a thin layer of clean sand to accelerate natural recovery processes in the sediment.



September 2022: A capping barge places material in the Shallow Sheltered Bay near the spit of land.



October 2022: Capping operations in the Shallow Sheltered Bay.

Spirit Lake GLLA Project Progress Update

Completed work

Shoreline Protection:

- ✓ **6,400 linear feet** of shoreline was protected by rock, timber logs, or vegetation.



January 2023: A trench is made adjacent to the Delta Upland Cap to place logs for shoreline protection.



September 2022: Erosion control straw matting is placed on the shoreline of the Shallow Sheltered Bay to protect the soil and seeded areas.

Ongoing Work Spring through Fall 2023

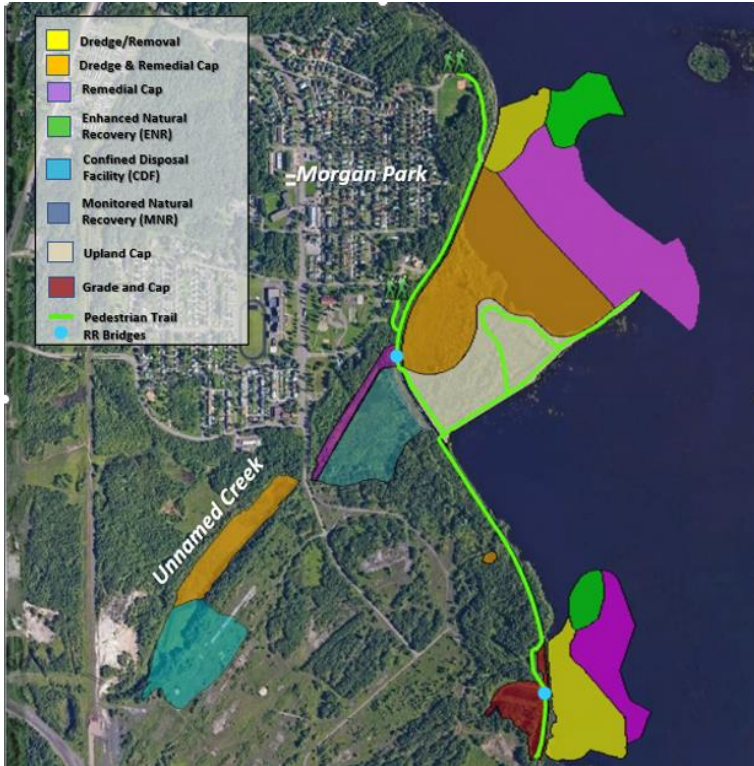
- ❑ Railroad and pedestrian bridges are being constructed where Unnamed Creek meets the Shallow Sheltered Bay and where Wire Mill Pond meets the St. Louis River.
- ❑ Habitat restoration plantings will occur spring through fall of 2023.
 - ❑ 138 acres of aquatic restoration
- ❑ Topsoil and clay will be placed on the Confined Disposal Facilities (CDFs) and they will be planted with native upland species in 2023.



June 2023: Plants are grown at the onsite greenhouse prior to planting in Wire Mill Pond and the Shallow Sheltered Bay.



May 2023: Overview of Unnamed Creek railroad and pedestrian bridges.



May 2023: Segment of the pedestrian trail in construction in the northern portion of the project area near the Morgan Park neighborhood.



May 2023: Segment of the pedestrian trail in construction in the northern portion of the project area near the Morgan Park neighborhood.

Pedestrian Trail Updates

Ongoing work:

- Pedestrian trail, recreational features, new railroad bridge crossings
- The pedestrian trail will be completed in fall 2023

For safety, the trail will not be open to the public until all work is complete.

Thank you!
Questions?




Duluth Parks & Recreation



About Us

Our Mission

The National Park Service preserves unimpaired the natural and cultural resources and values of the National Park System for the enjoyment, education, and inspiration of this and future generations. **The Park Service cooperates with partners to extend the benefits of natural and cultural resource conservation and outdoor recreation throughout this country and the world.**





What is Rivers, Trails, & Conservation Assistance?

- RTCA is a regional community partnership program that provides technical assistance to communities, public land managers, and nonprofit organizations that are planning outdoor recreation or natural resource conservation projects.
- RTCA provides professional planning, design, and technical expertise to help achieve the project's conservation and outdoor recreation vision.

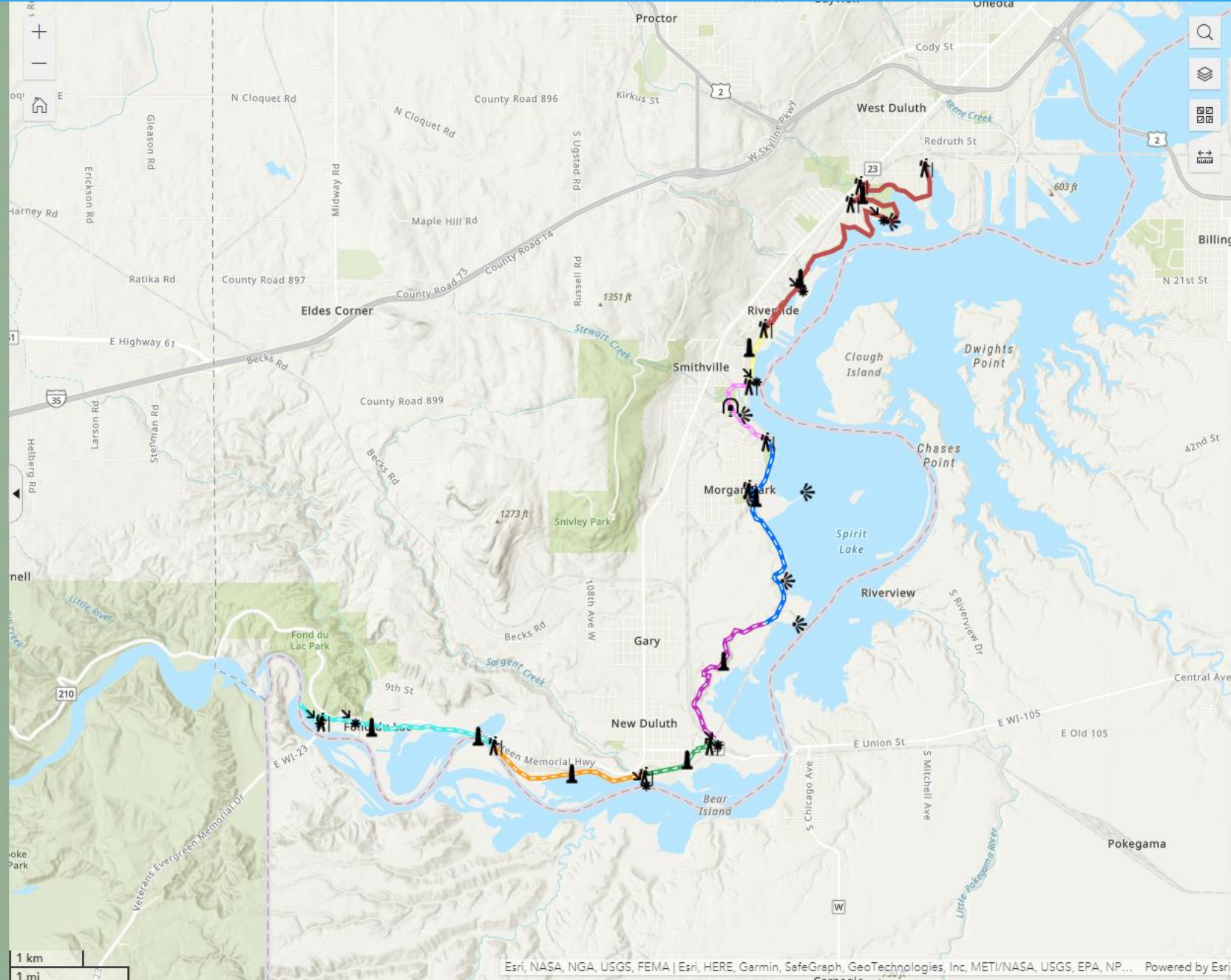
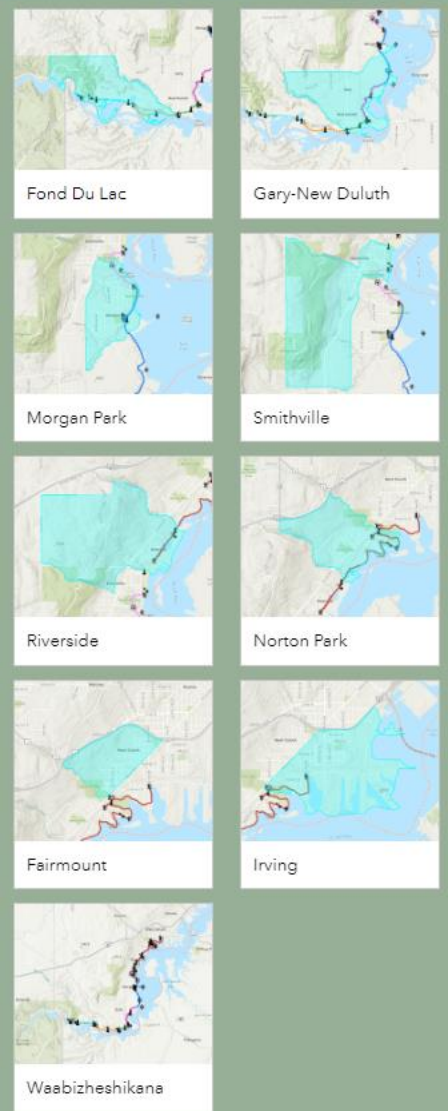












Services offered

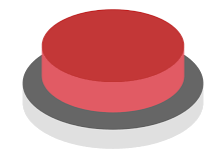
- Project Guidance
- Strategic Planning
- Partnership Development
- Trail, Greenway, and Water Trail Planning
- Park Planning
- Sustainable Tourism Planning
- Conceptual Plans & Design Renderings
- Funding Strategies
- Community Outreach and Engagement
- Open Space and Landscape Conservation



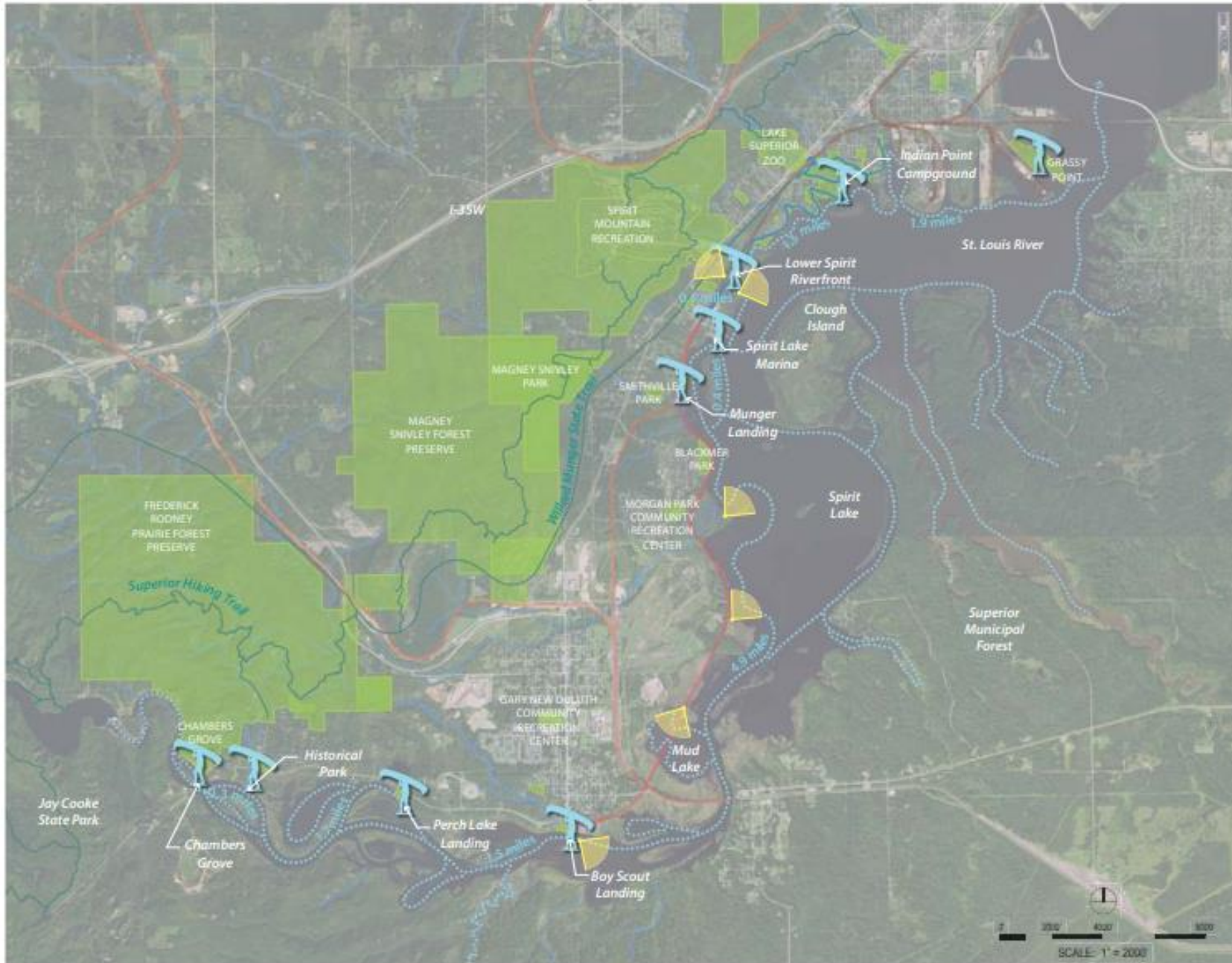


- Trailheads & Landings**
- 
- Pause Areas**
- 
- Overlooks**
- 
- Story Poles**
- 
- Miscellaneous**
- 

- Waabizheshikana**
-  Segment 0
 -  Segment 0 - Reroute
 -  Segment 1
 -  Segment 2
 -  Segment 3
 -  Segment 4
 -  Segment 5
 -  Segment 6
 -  Segment 7



1 km
 1 mi



Existing mileage between access points:

| ACCESS POINT | DISTANCE |
|--|------------------|
| Grassy Point to Indian Point Campground | 1.9 miles |
| Indian Point Campground to Lower Spirit Riverfront | 1.3 miles |
| Lower Spirit Riverfront to Spirit Lake Marina | .5 miles |
| Spirit Lake Marina to Munger Landing | .4 miles |
| Munger Landing to Boy Scout Landing | 4.9 miles |
| Boy Scout Landing to Perch Lake Landing | 1.5 miles |
| Perch Lake Landing to Historical Park | 1.7 miles |
| Historical Park to Chambers Grove | .3 miles |

LEGEND

- PARKLAND
- WATER TRAIL ACCESS POINT
- WATER TRAIL
- STREAMS
- BNSF LINE
- LSMR LINE
- DMIR LINE
- EXISTING TRAIL
- EXISTING WESTERN WATERFRONT TRAIL
- VIEWS TO POINTS OF INTEREST (SPIRIT LAKE, CLOUGH ISLAND, SPIRIT MOUNTAIN, US STEEL ESTUARY BAYS)

Plan Components

STORY THREADS

The big stories that shaped this place.

INTERPRETIVE APPROACH

Visitor experience goals and storytelling methods

INTERPRETIVE ELEMENTS

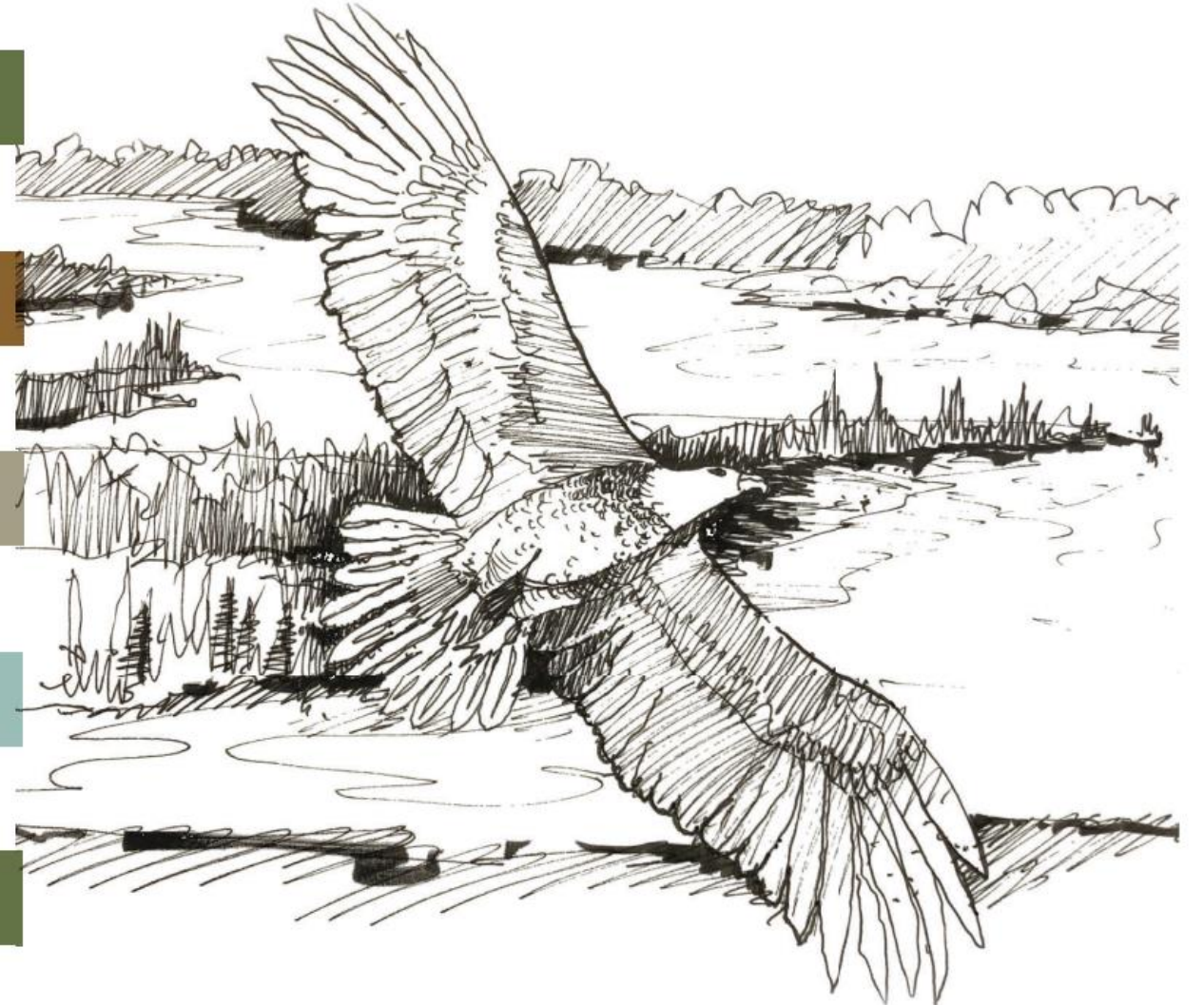
Creations that tell stories

RIVER PLACES

Profiling the places along the Waterfront

IMPLEMENTATION

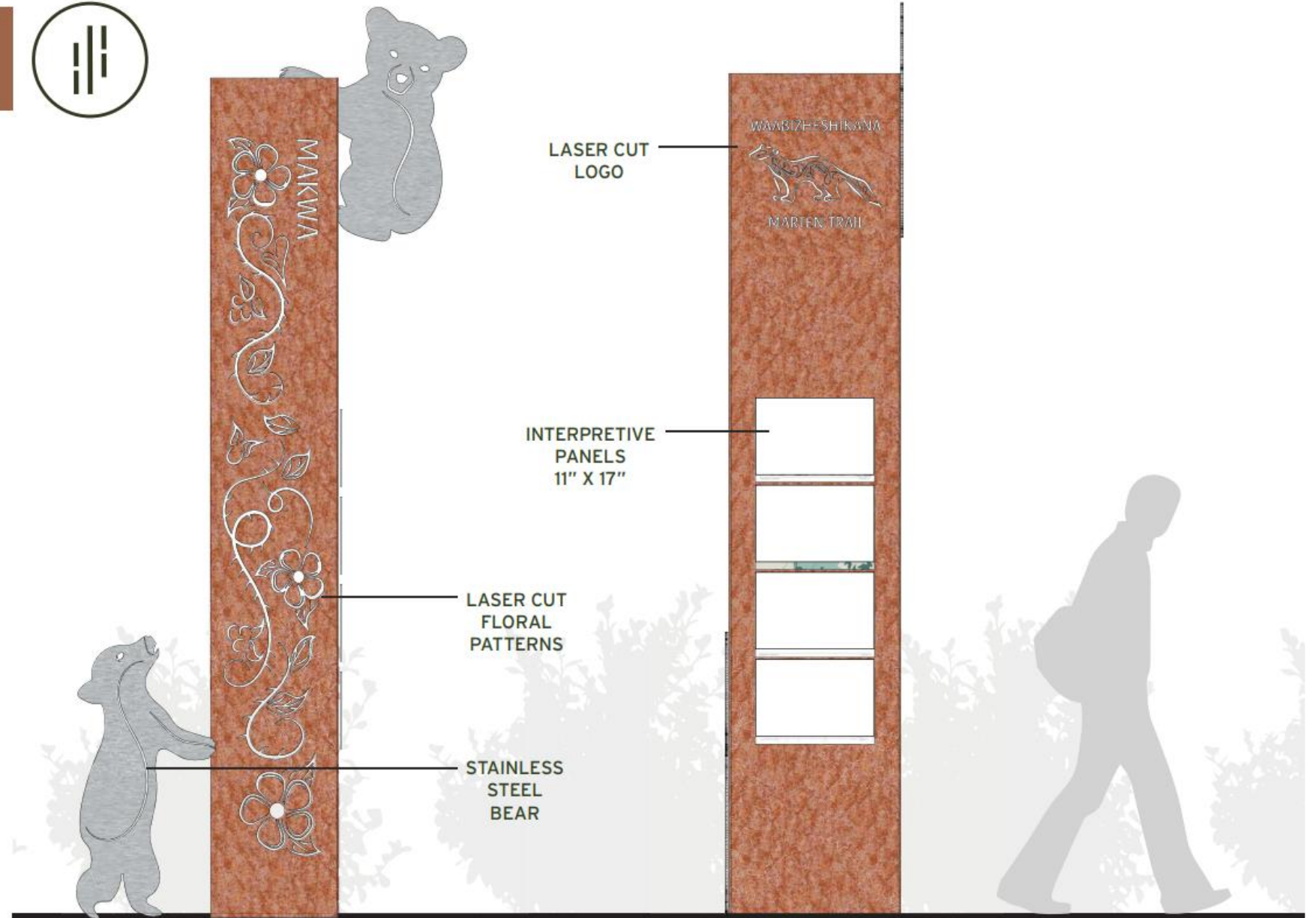
Implementation Strategies and Estimated Costs



Story Poles



- **Durability**
Steel honors the ore and steel making legacy of the area
- **Worldview**
Ojibwe language and respect for the plants and animals of the Estuary
- **River Places**
Panels tell stories of the people, places, and lifeways of the river
- **Landmark**
Tells the story of a place through time.



Plant & Animal Guides



Story Poles

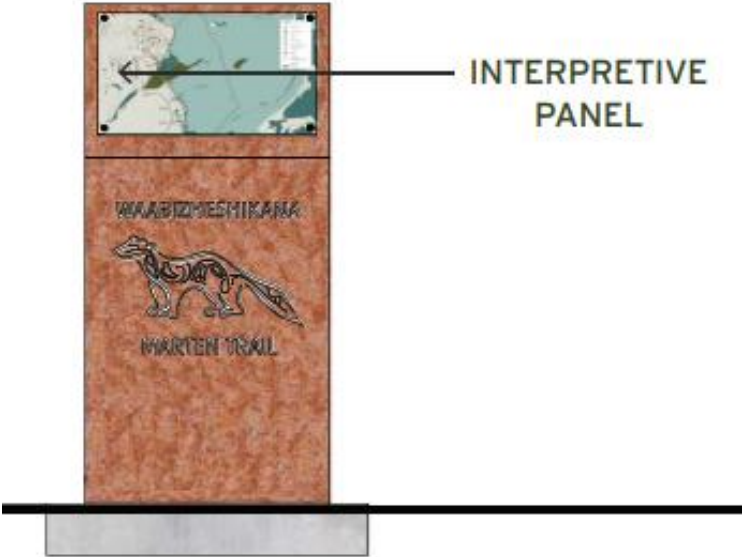
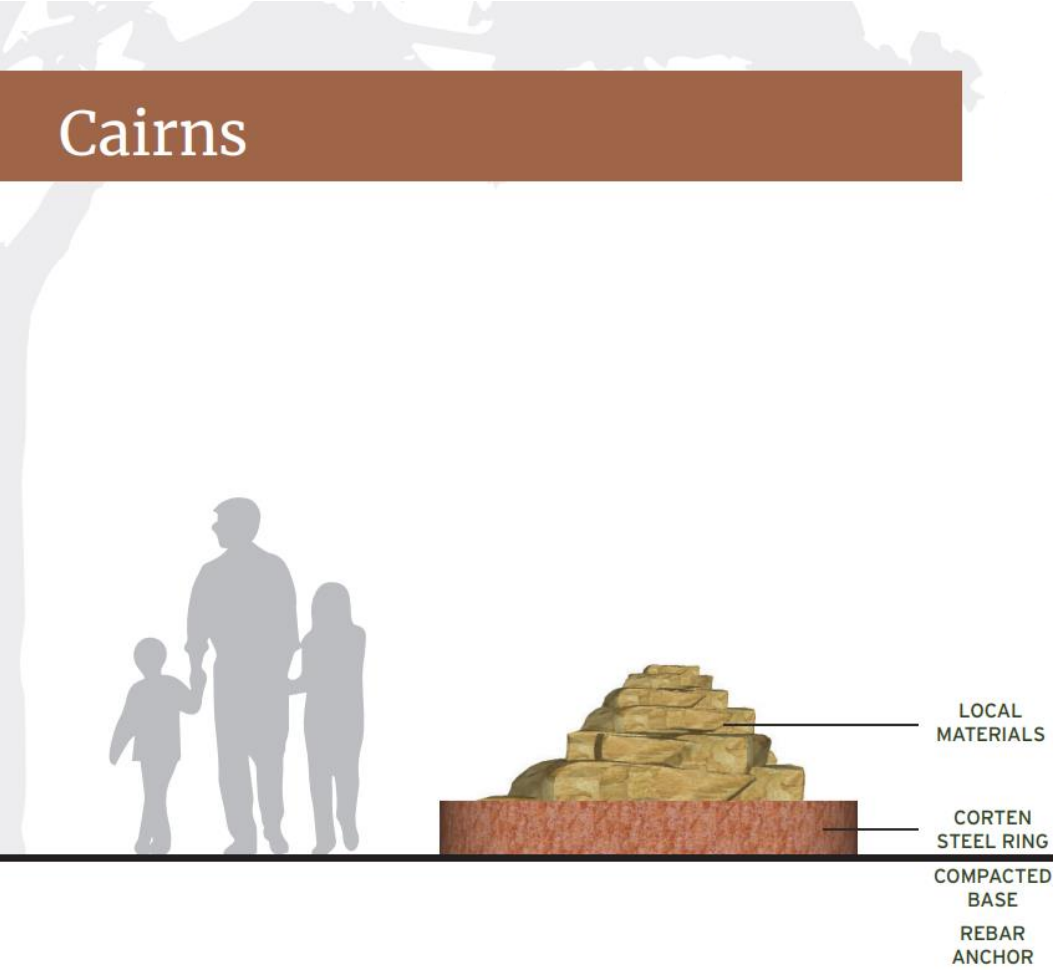




Freestanding Signs



Cairns



Story Poles



Miskwaadesi
Story Pole

Amik
Story Pole

Segment 1

Namekaa
Story Pole

Segment 2

Migizi
Story Pole

Segment 3

Zhagashi
Story Pole

Segment 4

Makwa
Story Pole

Segment 5

Segment 6

Segment 7

Nigig
Story Pole

Manoomin
Story Pole

Wiigwaas
Story Pole

Miskwaadesi
PAINTED TURTLE

Amik
BEAVER

Namekaa
STURGEON

Migizi
BALD EAGLE

Zhagashi
GREAT BLUE HERON

Makwa
BLACK BEAR

Wiigwaas
PAPER BIRCH

Manoomin
WILD RICE

Nigig
RIVER OTTER



River Place Maps



- Overlook
- Pause Point
- Trailhead
- Cairn
- Story Pole
- Freestanding Sign

- Trail
- Passage
- Restoration Area
- Railroad
- Open Water
- Wetland



**Duluth Parks
& Recreation**

Phase 1: Segment 0

- Accessibility and grade improvements
- Culvert/drainage repair
- Tate and Lyle (Spring Street) re-route
- Interpretation
- Indian Point Seven Fires Prophecy Pause Area
- Accessible trail to new DNR fishing pier

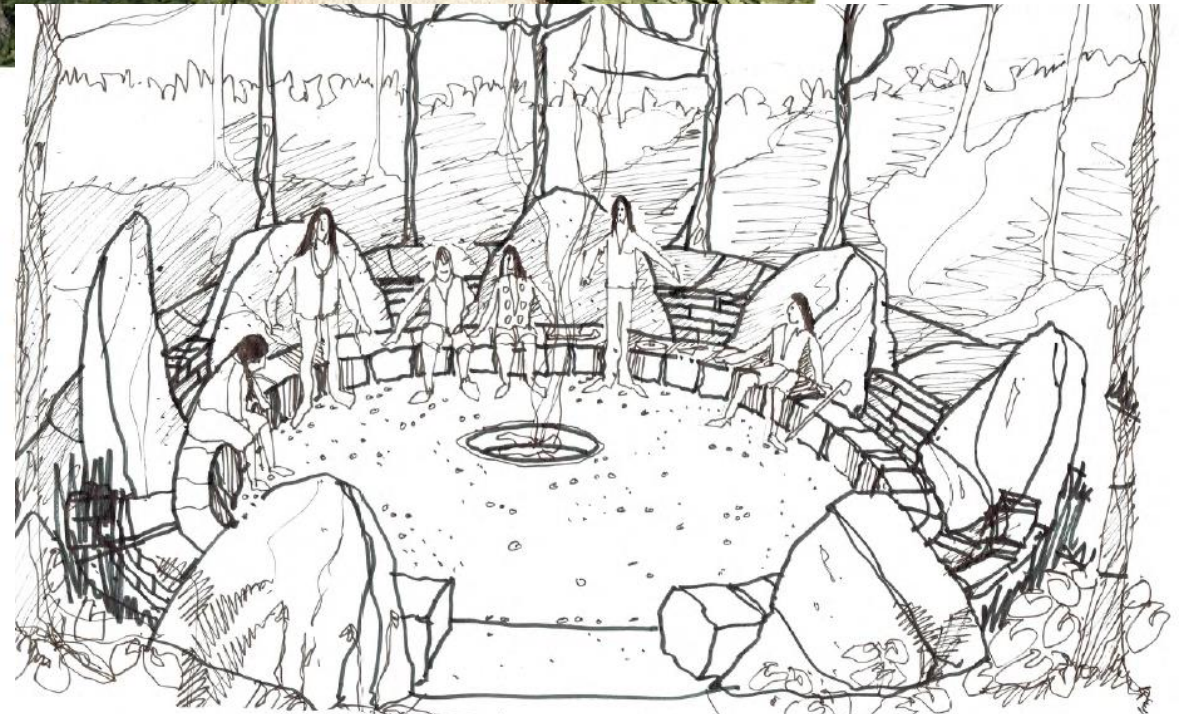


SEVEN FIRES STORYTELLING SPACE

Indian Point Campground
7000 Pulaski Street



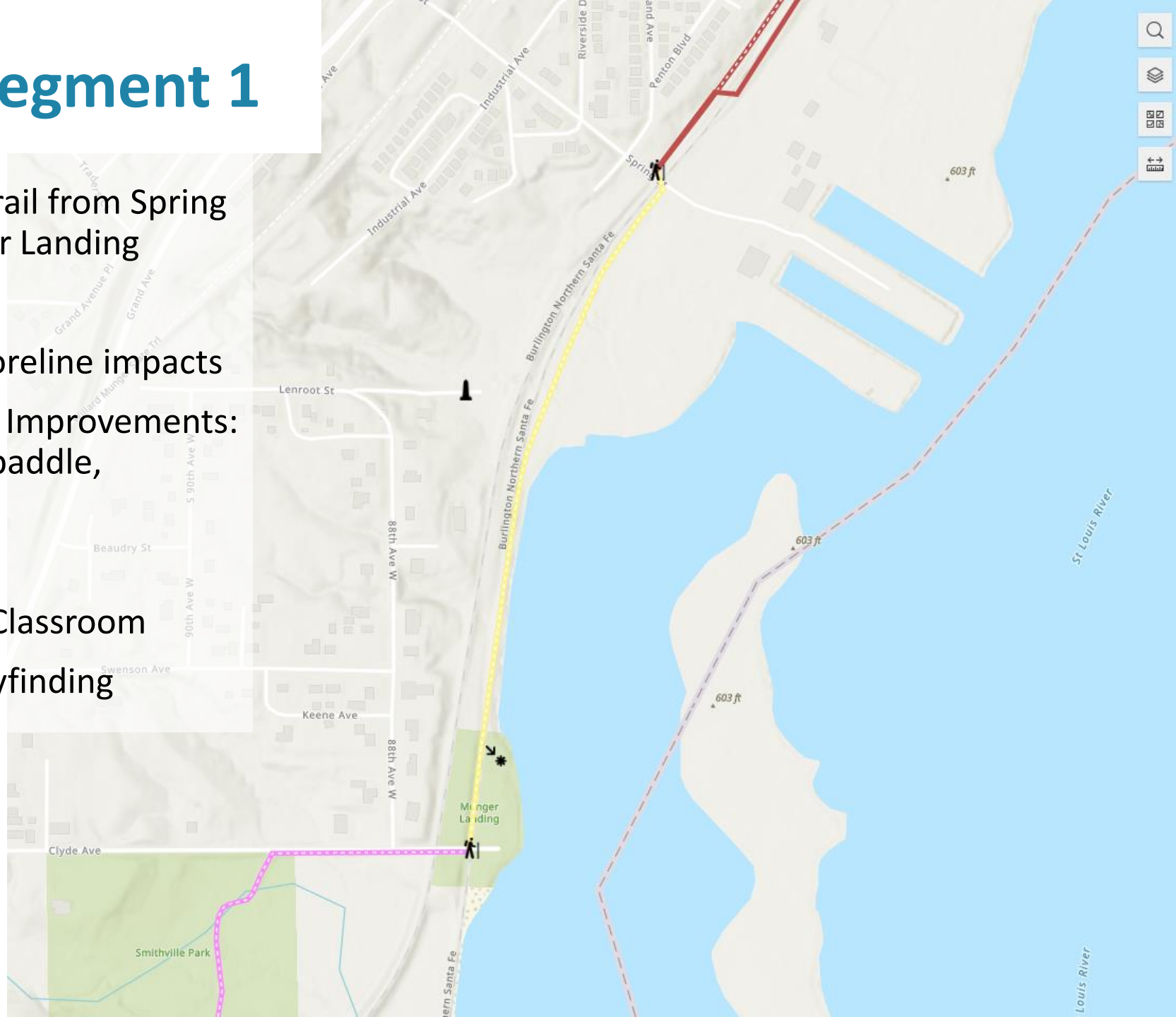
Duluth Parks
& Recreation



SEVEN FIRES SPACE

Phase 1: Segment 1

- Construct new trail from Spring Street to Munger Landing
- Rail relocation
- Wetland and shoreline impacts
- Munger Landing Improvements: parking, picnic, paddle, restrooms
- Interpretation
- IWWS Outdoor Classroom
- Signage and Wayfinding



Trailheads & Landings

Pause Areas

Overlooks

Story Poles

Miscellaneous

Waabizheshikana

- Segment 0
- Segment 0 - Reconstruct
- Segment 1
- Segment 2
- Segment 3
- Segment 4
- Segment 5
- Segment 6
- Segment 7

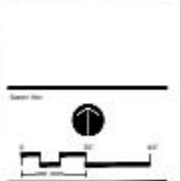


SAS
LANDSCAPE ARCHITECTURE
+ ASSOCIATES
WWW.SASLANDARCH.COM
200 WEST FIRST STREET, SUITE 200
DULUTH, MN 55802
91.218.206.1335
MIA@SASLANDARCH.COM

DATE REVISION
Name Date

| Name | Date |
|------|------|
| | |
| | |
| | |
| | |
| | |
| | |
| | |
| | |
| | |
| | |

**MARTEN TRAIL
MUNGER LANDING
IMPROVEMENTS**
CITY OF DULUTH, MINNESOTA

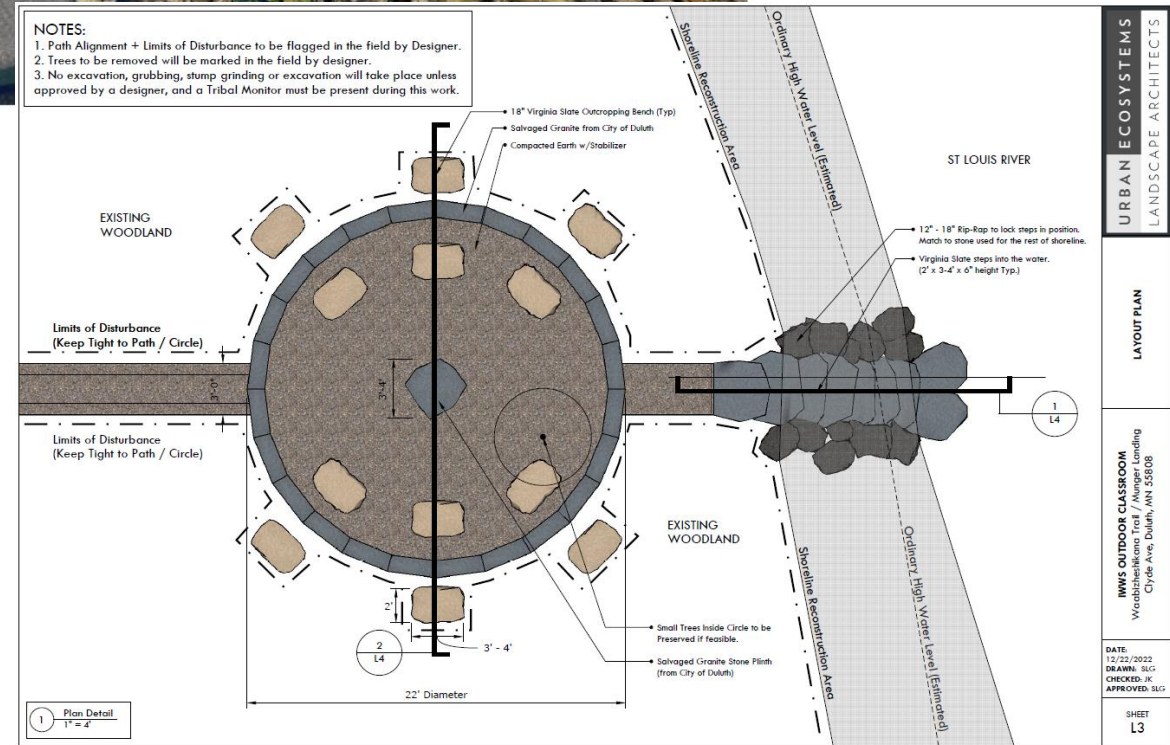


DATE: 1/6/2022
DRAWN BY: LWS
CHECKED BY: LWS
PROJECT NUMBER: 22200
SHEET NUMBER: L-3

IWWS OUTDOOR CLASSROOM

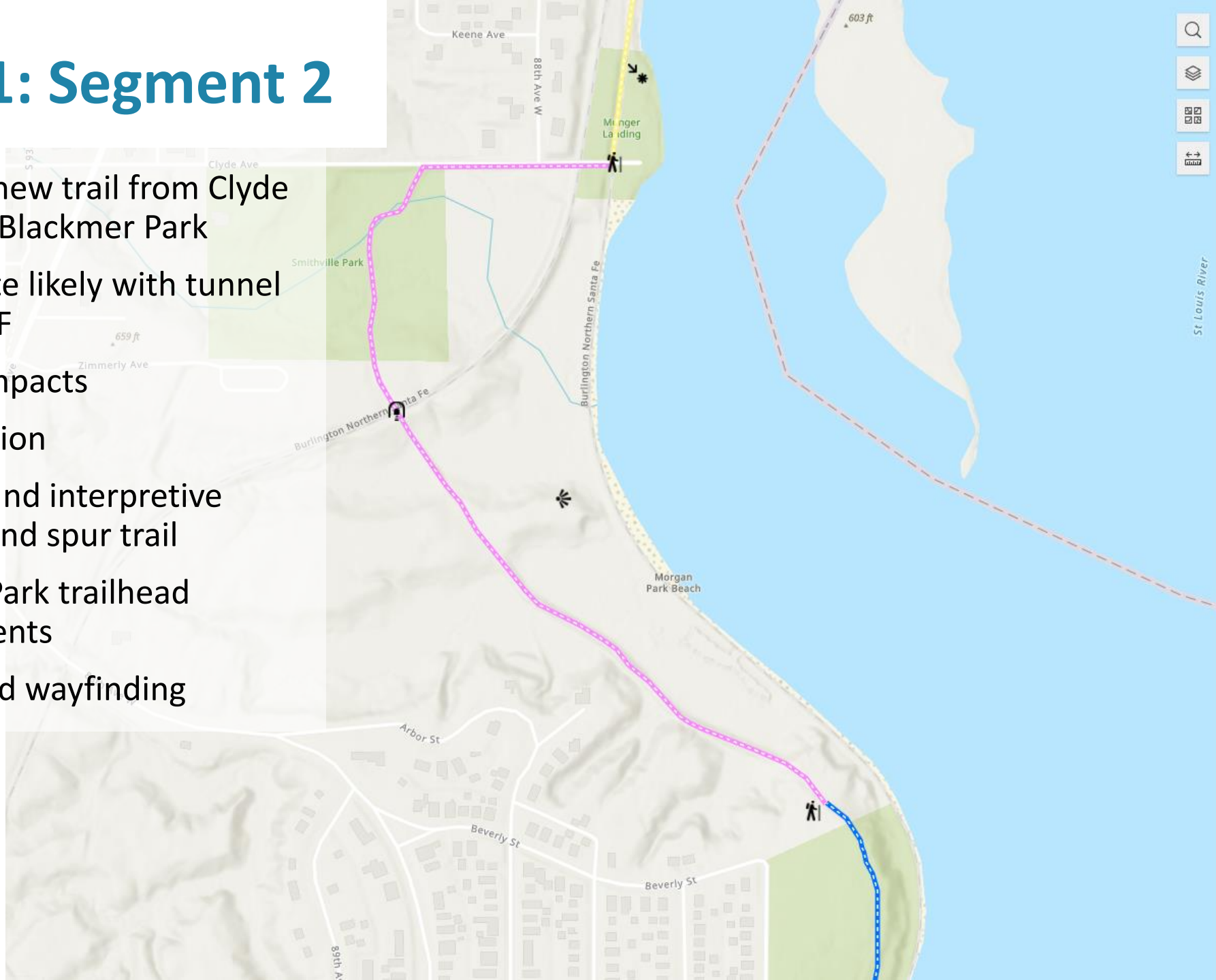
Waabizheshikana Trail / Munger Landing

Clyde Ave, Duluth, MN 55808



Phase 1: Segment 2

- Construct new trail from Clyde Avenue to Blackmer Park
- Inland route likely with tunnel under BNSF
- Wetland impacts
- Interpretation
- Turtle Mound interpretive landform and spur trail
- Blackmer Park trailhead improvements
- Signage and wayfinding



Trailheads & Landings

Pause Areas

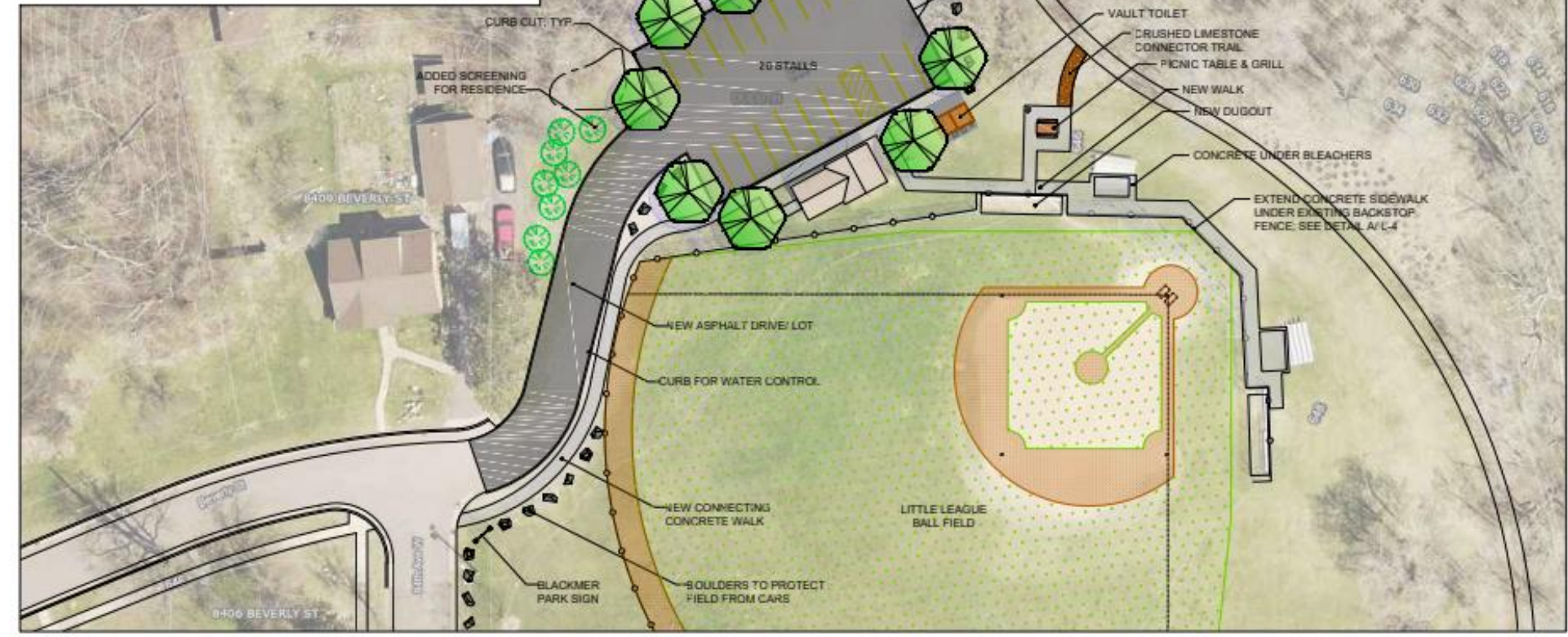
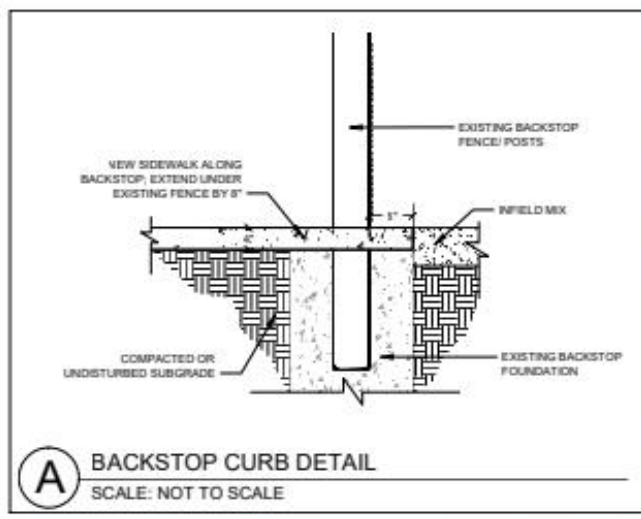
Overlooks

Story Poles

Miscellaneous

Waabizheshikana

- Segment 0
- Segment 0 - Reconstruct
- Segment 1
- Segment 2
- Segment 3
- Segment 4
- Segment 5
- Segment 6
- Segment 7



ISSUE RECORD/REVISION

| Number | Date |
|--------|------|
| | |
| | |
| | |
| | |
| | |
| | |
| | |
| | |
| | |
| | |

**MARTEN TRAIL
BLACKMER PARK
IMPROVEMENTS**
CITY OF DULUTH, MINNESOTA

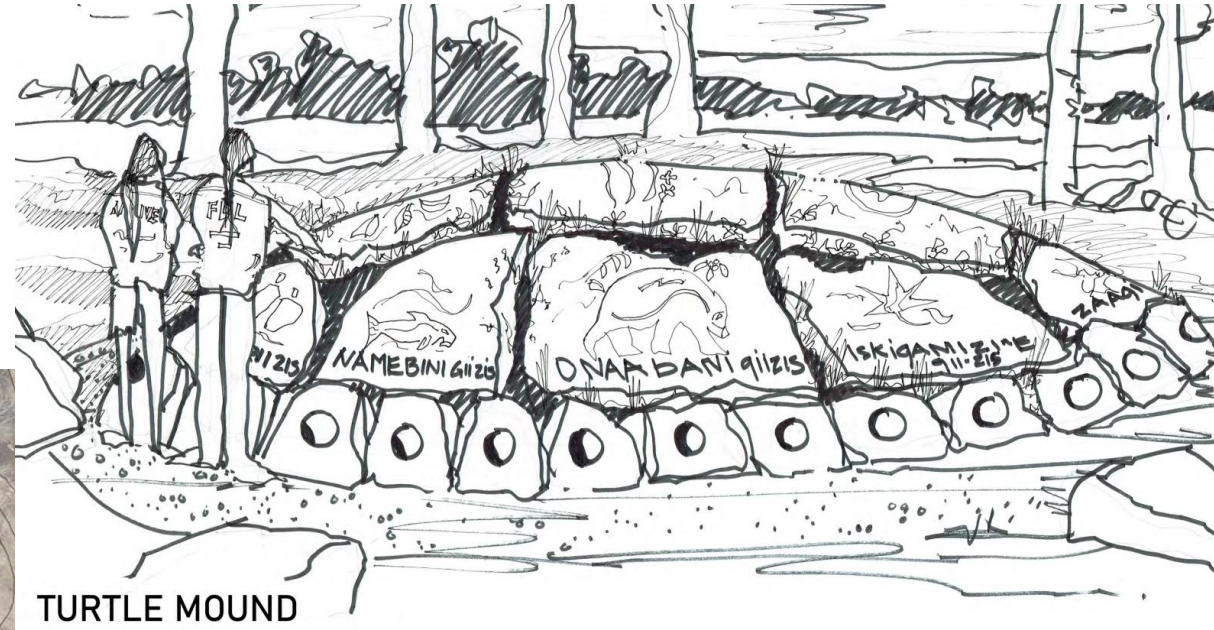


Scale: 1" = 40'

DATE: 5/9/2022
DESIGNER: LWS
CHECKER: LWS
PROJECT NUMBER: 22200
SHEET NUMBER: L-4

MIKINAAK - TURTLE MOUND

Waabizheshikana Trail

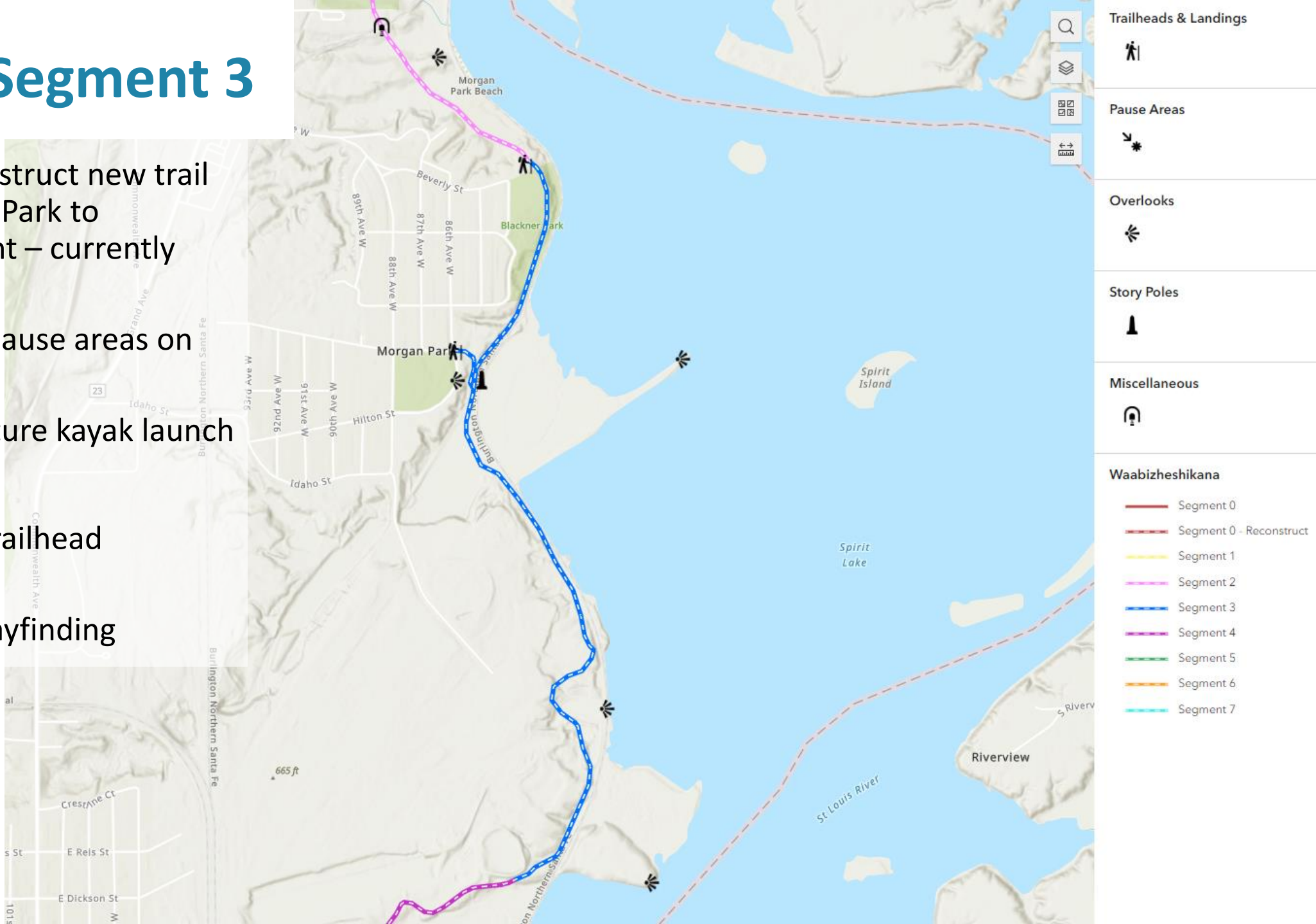


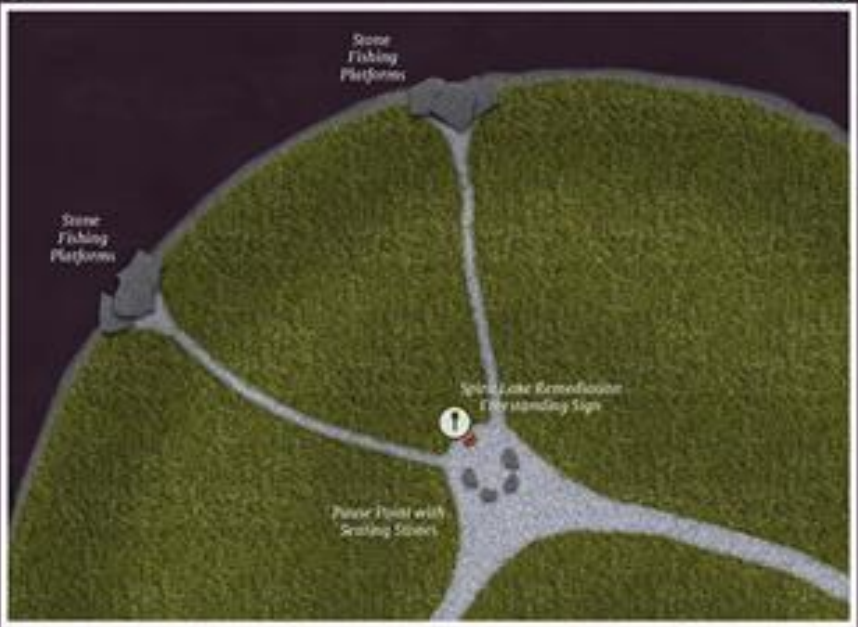
TURTLE MOUND

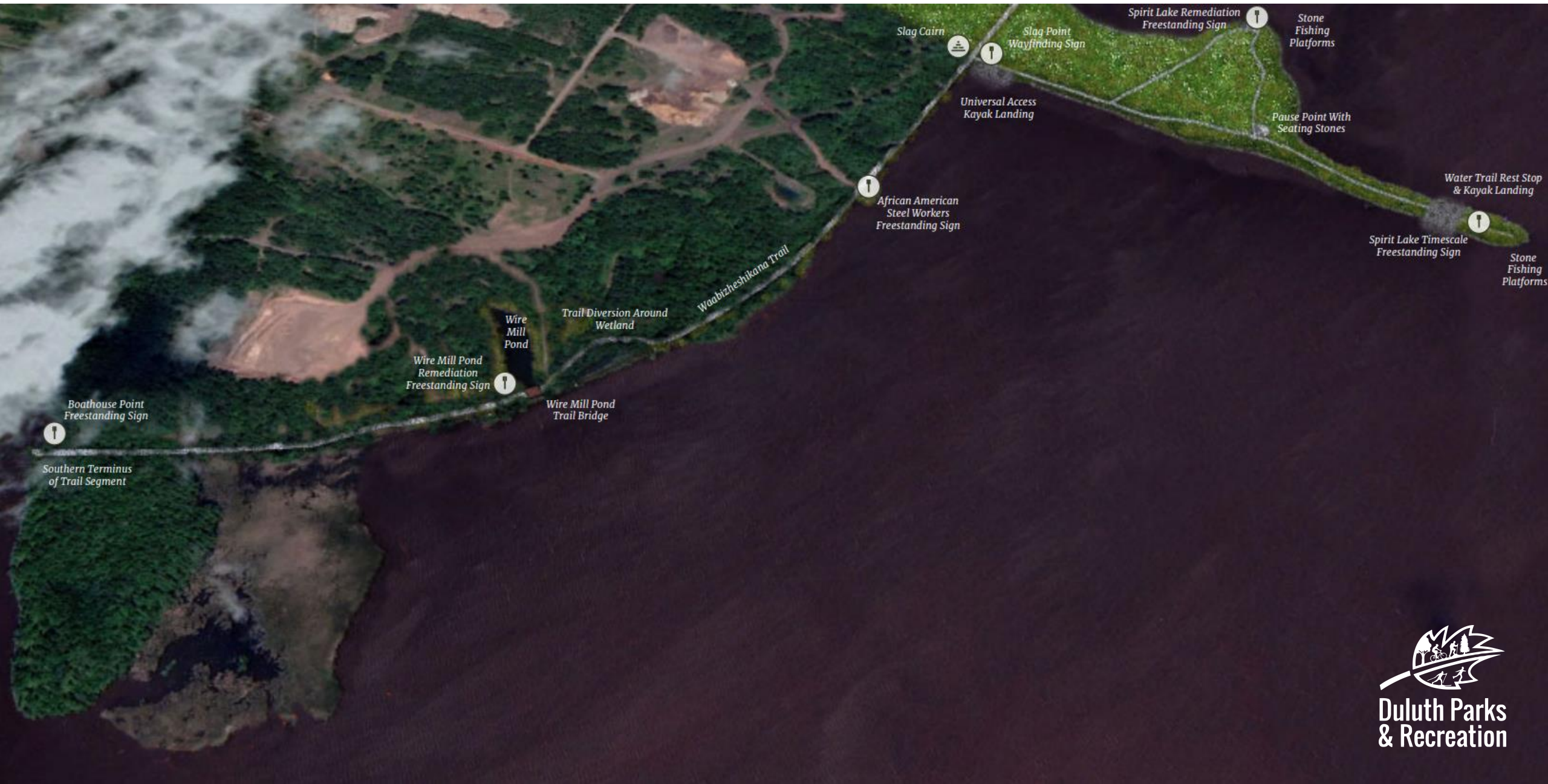


Phase 1: Segment 3

- US Steel to construct new trail from Blackmer Park to Boathouse Point – currently underway
- Spur trail and pause areas on Slag Point
- Prepped for future kayak launch
- Interpretation
- Falcon Street trailhead improvements
- Signage and wayfinding







Phase 1: Funding Sources

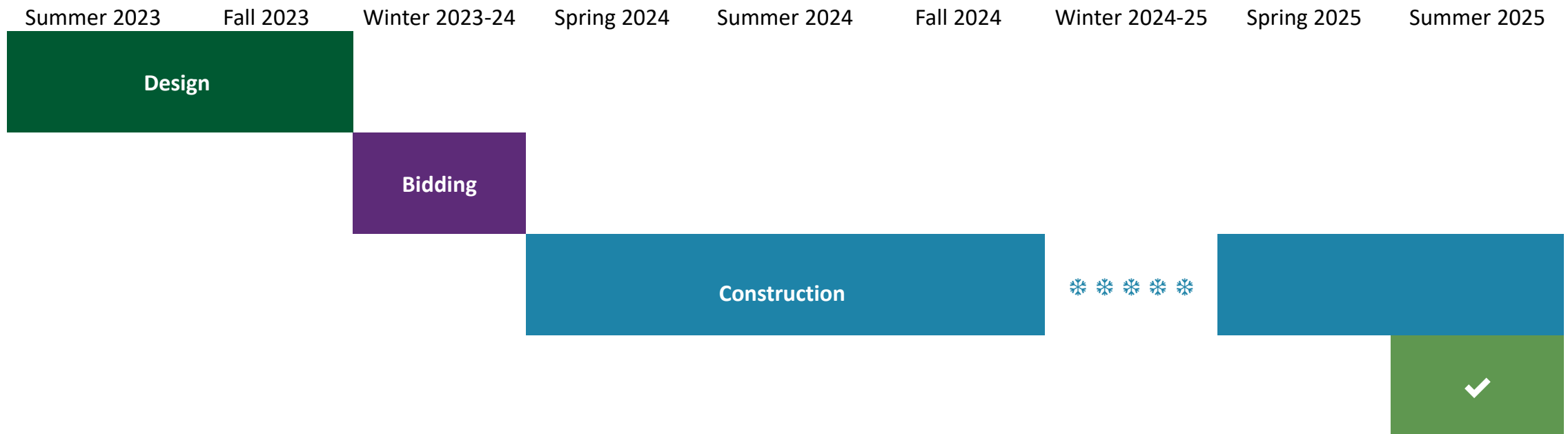
| Amount | Partner/Organization | Funding Source |
|-------------|---|---|
| \$1,493,434 | Greater Minnesota Regional Parks and Trails Commission (GMRPTC) | Minnesota Parks and Trails Legacy Fund |
| \$1,875,000 | Legislative-Citizen Commission on MN Resources (LCCMR) | MN Environment and Natural Resources Trust Fund |
| \$175,000* | National Park Service | U.S. Environmental Protection Agency - Great Lakes Restoration Initiative |
| \$131,000 | Minnesota Historical Society | Minnesota Arts and Cultural Heritage Fund |
| \$400,000 | City of Duluth | Parks Fund – ½ and ½ tax |
| TBD | Fond du Lac Band of Lake Superior Chippewa | |
| \$10,000 | Indigenous Women’s Water Sisterhood | |



*Currently awarded, with additional support anticipated for implementation and programming

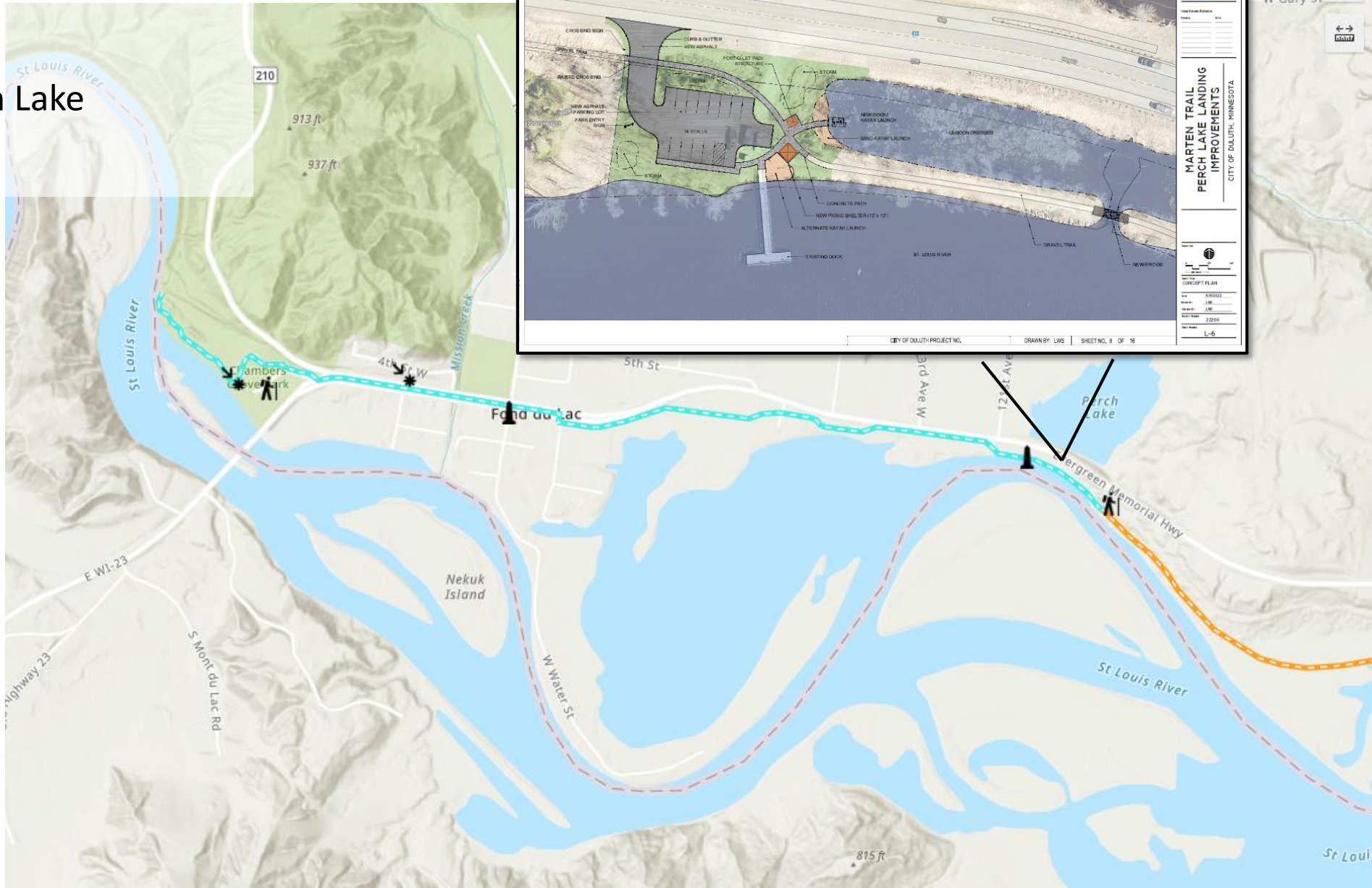
Phase 1: Timeline

- Summer 2023: Final design segments 0-2, pause areas, and Munger Landing and Blackmer Park
- Winter 2023: Bidding
- Spring 2024: Construction begins
- Summer 2025: Project completion



Phase 2: Segment 7

- Perch Lake



Trailheads & Landings



Pause Areas



Overlooks



Story Poles



Miscellaneous

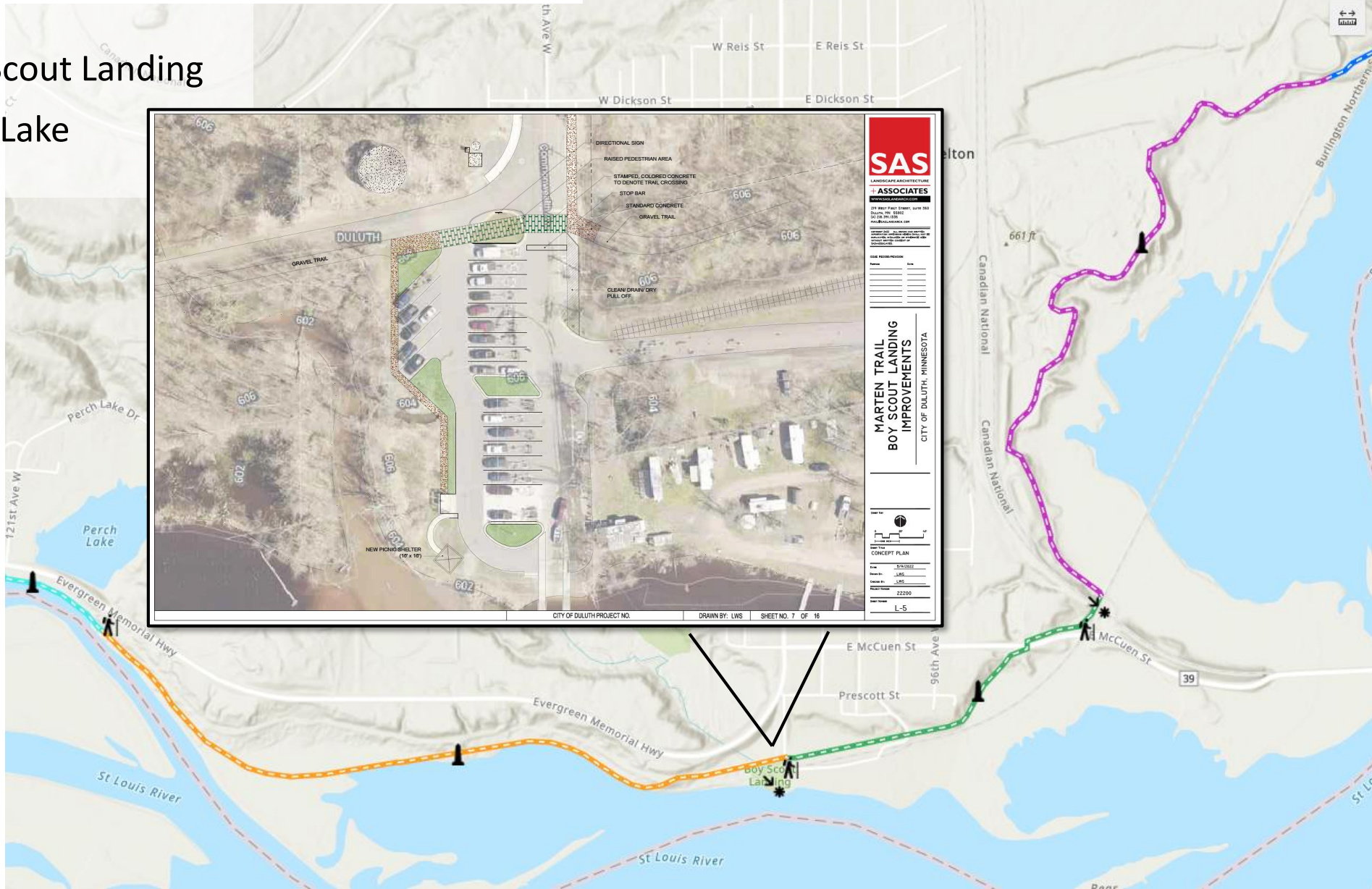


Waabizheshikana

- Segment 0
- Segment 0 - Reconstruct
- Segment 1
- Segment 2
- Segment 3
- Segment 4
- Segment 5
- Segment 6
- Segment 7

Phase 2: Segments 4-6

- Boy Scout Landing
- Mud Lake



- Trailheads & Landings
- Pause Areas
- Overlooks
- Story Poles
- Miscellaneous

- Waabizheshikana**
- Segment 0
 - Segment 0 - Reconstruct
 - Segment 1
 - Segment 2
 - Segment 3
 - Segment 4
 - Segment 5
 - Segment 6
 - Segment 7



Programming Opportunities

- Year-round activities offered by Parks & Recreation
- All ages
- Free
- Transportation to/from some activities
- Examples: canoeing, fishing, biking, hiking, snowshoeing, and more!



Programming Timeline



2023

- Canoeing opportunity for youth and/or families in the works
 - Details coming soon!
- Fall (September-December)
 - Hiring process/search begins for part-time Recreation Specialist to coordinate and oversee new programming
 - Part-time, year-round position created by this funding
 - Community engagement to inform future programming ideas, activities, and events
 - New hire to plan and prepare for 2024 programming

2024

- Variety of program offerings begins May/June 2024

Questions, comments, or ideas
on future programming?
Let's talk!

Sam Werle
swerle@duluthmn.gov
218-730-4306



**St. Louis River Estuary
National Water Trail Updates
LCCMR Grant Funding Initiatives**

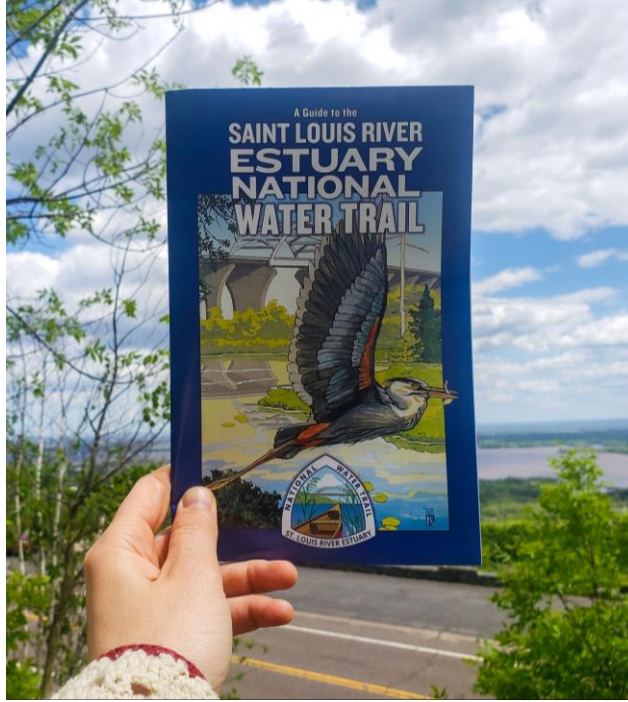




About the St. Louis River Alliance

The St. Louis River Alliance is a voice for the river, working to protect, restore and enhance the St. Louis River as well as connect people to this incredible resource.





About the St. Louis River Estuary National Water Trail

- Nation's largest freshwater estuary
- National Water Trail is a multi-use waterway
- Designated in 2020
- 11 looped routes for paddlers of all skill levels and abilities



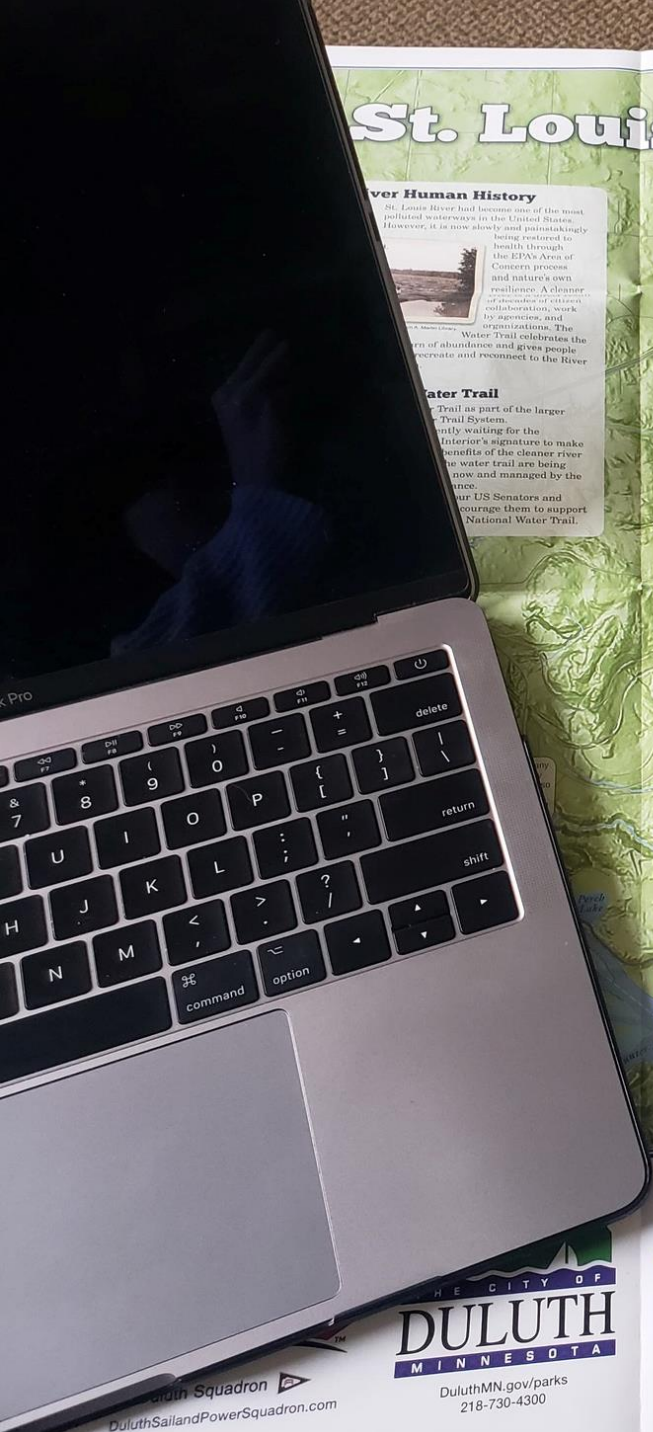
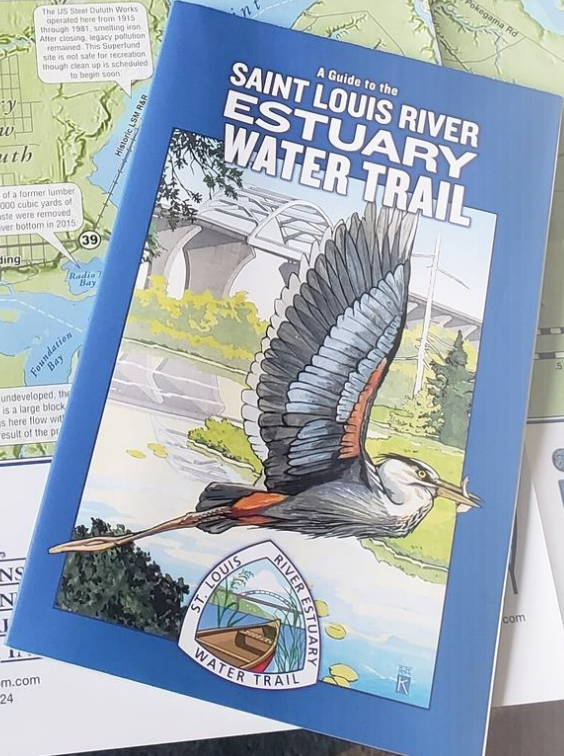
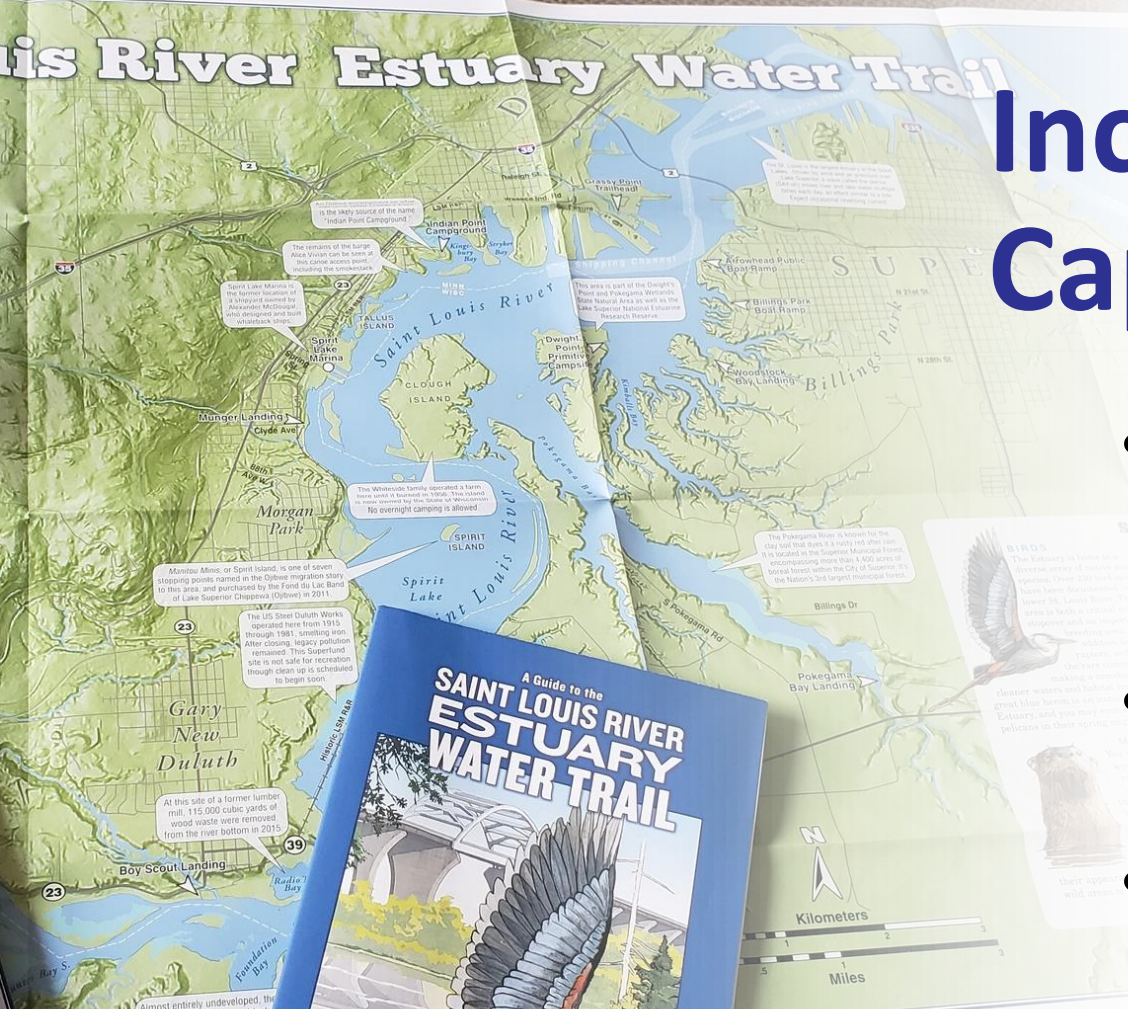
Increase Staff Capacity

- Hire a full-time National Water Trail Coordinator
- Hire two part-time Community Leaders
- Preference will be given to those living in the river neighborhoods

St. Louis River Estuary Water Trail

Over Human History
The St. Louis River has become one of the most polluted waterways in the United States. However, it is now slowly and painstakingly being restored to health through the EPA's Act of Concern process and nature's own resiliency. A chamber of commerce and citizens collaboration, work by agencies, and organizations. The Water Trail celebrates the return of abundance and gives people a way to recreate and reconnect to the River.

Water Trail
The Water Trail is part of the larger Trail System. It is currently waiting for the Interior's signature to make the water trail are being now and managed by the State. Encourage them to support National Water Trail.





National Water Trail Coordinator

- Help implement the Master Plan using tools SLRA has already created
- Facilitate National Water Trail Advisory Council
- Continue to build on community partnerships
- Printing NWT maps
- Carry out four events per year to connect people to the river



Community Leaders

Hire two part-time Community Leaders

- Build neighborhood access and awareness to the National Water Trail
- Provide/collect valuable feedback on programming preferences of those living in river corridor neighborhoods





An Ojibwe encampment on what was once called Crosier's Point is the likely source of the name "Indian Point Campground."

The remains of the barge Alice Vivian can be seen at this canoe access point, including the smokestack.

Spirit Lake Marina is the former location of a shipyard owned by Alexander McDougal, who designed and built whaleback ships.

This area is part of the Dwight's Point and Pokegama Wetlands State Natural Area as well as the Lake Superior National Estuarine Research Reserve.

2023 Plans & Updates

- Create LCCMR timeline and begin hiring staff
- Distribute updated maps
- New signage
- Host events



Get Involved

- Attend an event
- Sign-up for our emails
- Follow @stlouisriveralliance on Facebook and Instagram
- Grab a map and tag #SLRENWT

www.StLouisRiver.org



Contact Information

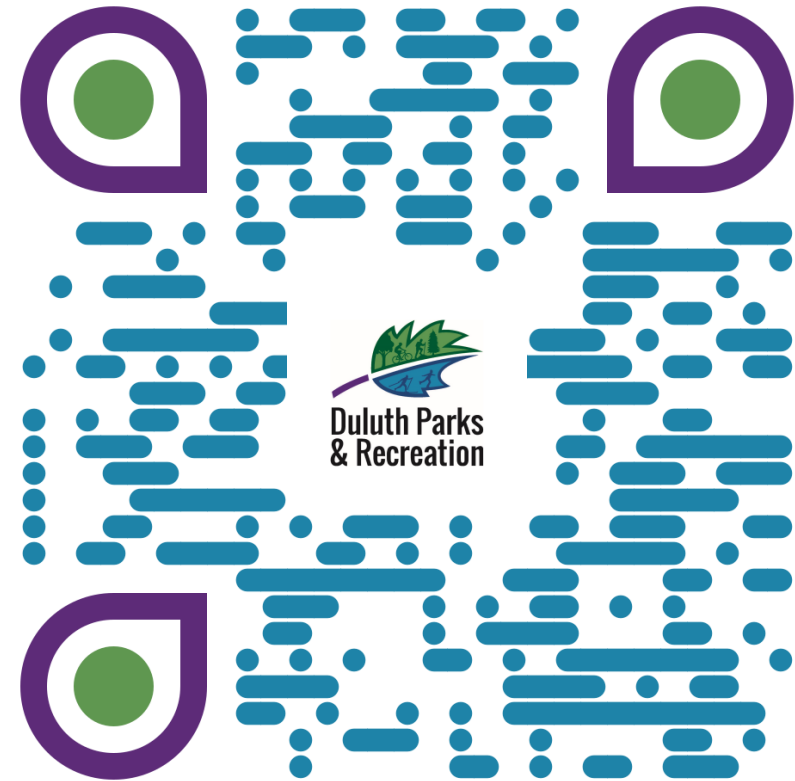


Cliff Knettel
Senior Park Planner
City of Duluth - Parks & Recreation
(218) 730-4312

cknettel@duluthmn.gov

Link for the project webpage:

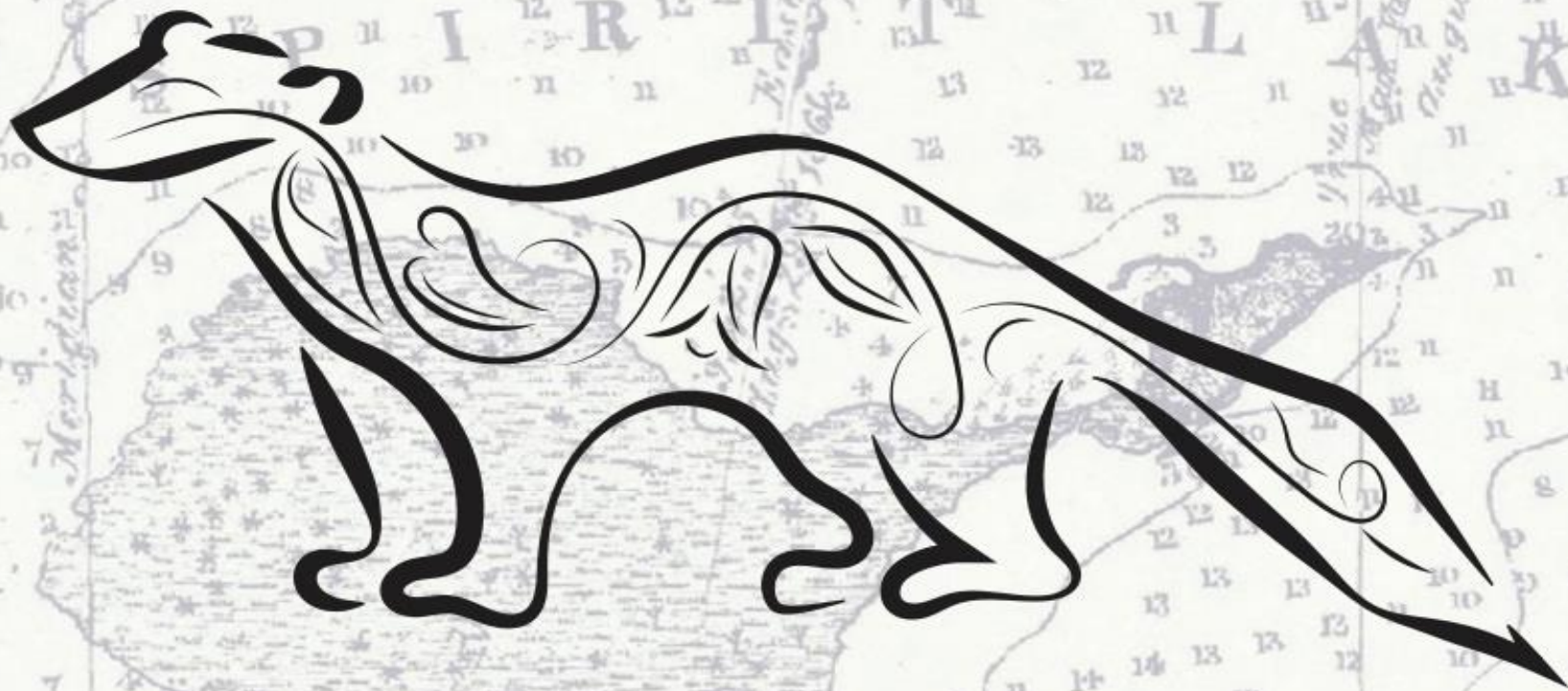
duluthmn.gov/parks/parks-planning/progress-in-the-park/waabizheshikana-the-marten-trail-segments-0-3/





Duluth Parks
& Recreation

WAABIZHESHIKANA



MARTEN TRAIL