





**Purchasing Division**  
*Finance Department*  
Room 120  
411 West First Street  
Duluth, Minnesota 55802

 218-730-5340  
 purchasing@duluthmn.gov

**Addendum 1**  
**Solicitation 23-AA06**  
**Steel Materials for Seawall Reconstruction**

This addendum serves to notify all bidders of the following changes to the solicitation documents:

1. Please see the changes identified in the attached document.

Please acknowledge receipt of this Addendum by checking the acknowledgment box within the [www.bidexpress.com](http://www.bidexpress.com) solicitation.

Posted: **April 27, 2023**



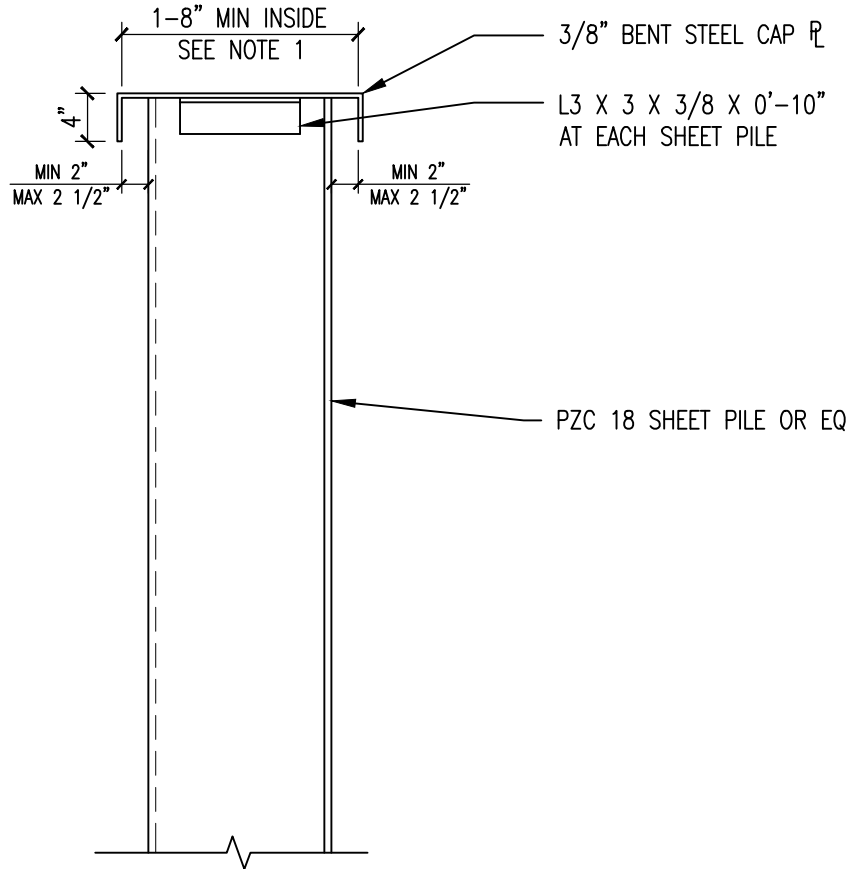
Consulting Engineers P.A.

---

April 26, 2023

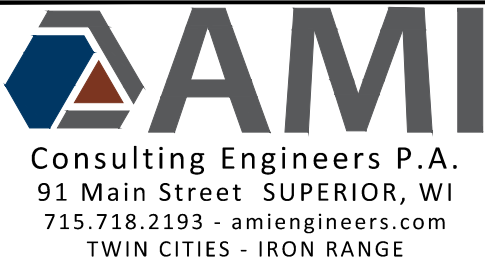
**Re: Steel Materials for Seawall Reconstruction (Solicitation No. 23-AA06) – Addendum #1**  
AMI Project # 211016

1. The following sheet pile sections have been approved as equal to the specified PZC-18 Sheet pile.
  - a. Cold Formed Sheet Pile DZ-95
  - b. Hot Rolled Sheet Pile NZ-19
  - c. Cold Formed Sheet Pile SKZ-24
  
2. The EDA does not have a goal or requirement for American-made equipment and products. However, the EDA Contracting Provisions for Construction Projects states, *“To the greatest extent practicable, contractors are encouraged to purchase American made equipment and products with funding provided under EDA financial assistance awards.”*
  
3. The Steel fabricator/supplier is responsible for any alterations to the steel dock cap which may be the result of utilizing a different sheet pile section than what was specified in the bid package (PZC-18). The steel dock cap was designed to allow for a minimum sheet pile installation tolerance of 2” and a maximum sheet pile installation tolerance of 2.5” on either side of the centerline of the dock cap. See attached revised detail 5/CT3.0 for additional information.
  
4. The wale, pipe pile, and dock cap do not require any coating or galvanization. The only steel item to be coated is the steel sheet pile as specified in the bid documents.



**5** TYPICAL BENT PLATE CAP DETAIL  
 CT3.0 1" = 1'-0"

1. CONTRACTOR IS RESPONSIBLE FOR ALTERING THE DOCK CAP WIDTH TO ALLOW FOR A SSP INSTALLATION OF A MINIMUM OF 2" BUT A MAXIMUM OF 2 1/2" FROM EITHER SIDE OF THE CENTERLINE OF THE DOCK CAP, IF A SSP OTHER THAN THE SPECIFIED PZC18 IS SELECTED.



DULUTH COASTAL INFRASTRUCTURE  
 REHABILITATION PROJECT  
 DULUTH, MINNESOTA

JOB No: 211016  
 DATE: 04/26/23  
 DRAWN BY: SAJ  
 SHEET:

TYPICAL BENT PLATE CAP DETAIL

**CT3.0**