



Purchasing Division
Finance Department
Room 120
411 West First Street
Duluth, Minnesota 55802

218-730-5340
purchasing@duluthmn.gov

Addendum #2
Solicitation 22-99784
City Hall Grounds Improvements

This addendum serves to notify all bidders of the following changes to the solicitation documents:

1. The pre-bid meeting sign-in sheet is attached.
2. Tree Removal: see attached Sheet L4.1 for clarification on tree removals.
3. The following questions asked are answered below in red italics:
 - 1) Bid Item #5: Class V aggregate: What Item(s) is this intended to be used for? *To be used under walks/drives if adequate Class V is not present or excavated.*
 - 2) Bid Item #6: Geo-Textile Fabric: What Items does this include? *To be used at base of stairs in stair repairs.*
 - 3) Bid Item #9: Concrete Drive Paving-Two different sizes are specified: 6" per L1-4 (Detail 3) or 8" per L1.2 (Detail 5) *Concrete sidewalks/driveways around parking lot and in service drive area are to be 8", interior sidewalks are to be 6". See attached revised detail 3/L1.4 for clarification.*
 - 4) Bid Item #17: Reset Wall Caps (Replace flashing if needed) How many wall caps are intended to be reset? *As shown on sheet L2.0, there are 5 caps identified to be reset. (Wall caps to be reset are shaded on the plan sheet)*
 - 5) L1.0 Note: Coordinate new slab w/electrical contractor for future transformer. What is this referring to? The arrow points to upper sidewalk by the trench drain. *A potential new transformer conduit may be placed under the upper sidewalk that is to be replaced; Contractor will need to coordinate with Electrical Contractor for clarification on conduit placement and timing of work so that paving is not done prior to placement of conduit.*
 - 6) 48" x 24" Barricades: Any detail/specifications of what is desired? *Contractor to submit proposed barricade for approval; must meet all size and concrete specifications. See attached sample image for acceptable style of barricade.*

ATTACHMENTS:

Pre-bid meeting sign-in sheet.

Sheet L4.1-Landscape Existing Conditions & Removals; See clarification on which trees Contractor will be responsible for removing (attachment identifies trees that will be removed by the City Prior to project commencement).

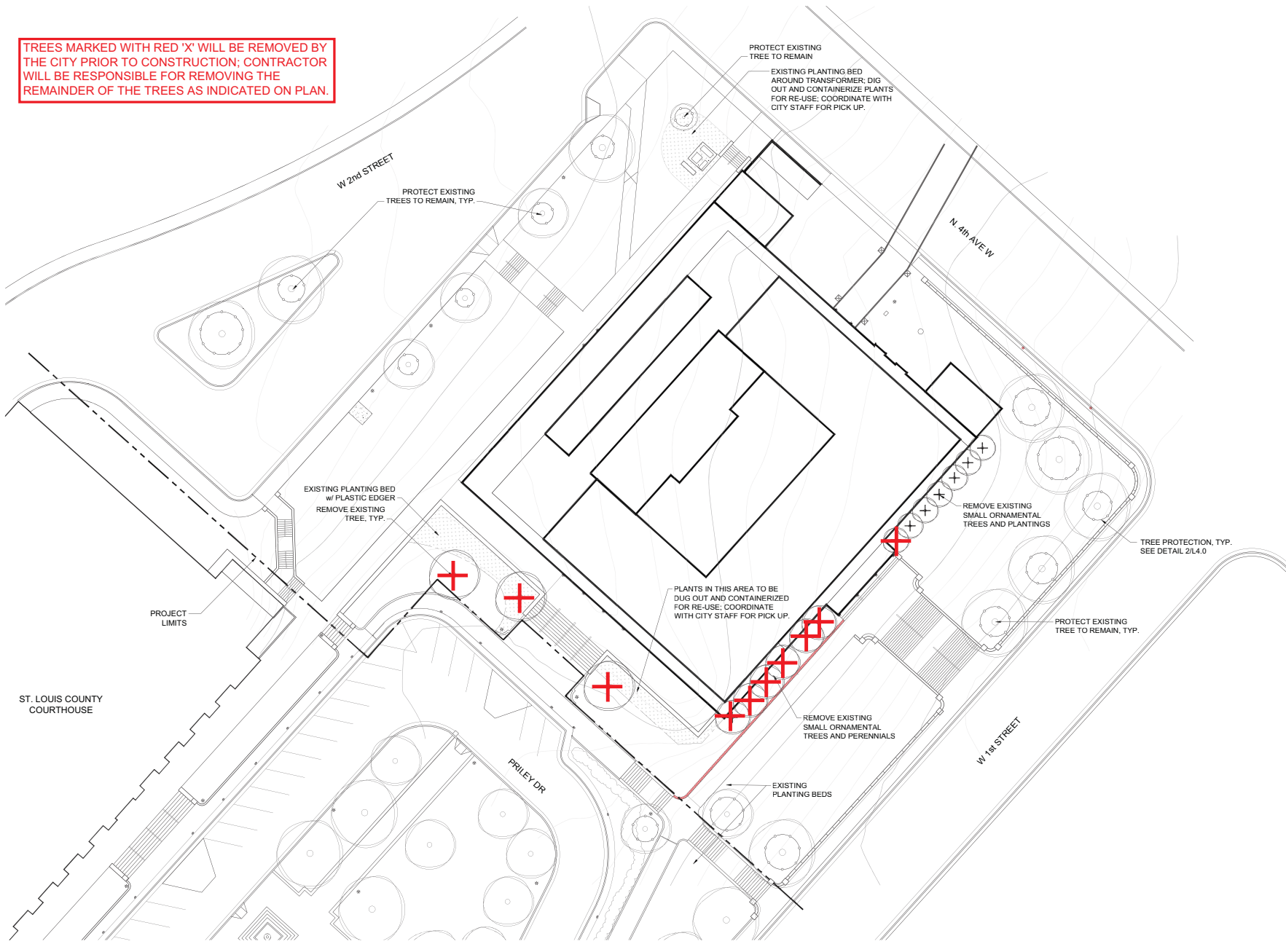
Sheet L1.4-Ste Details; See revised Detail 3.

Sample Barricade Image.

Please acknowledge receipt of this Addendum by checking the acknowledgment box within the www.bidexpress.com solicitation.

Posted: **February 27, 2023**

TREES MARKED WITH RED 'X' WILL BE REMOVED BY THE CITY PRIOR TO CONSTRUCTION; CONTRACTOR WILL BE RESPONSIBLE FOR REMOVING THE REMAINDER OF THE TREES AS INDICATED ON PLAN.

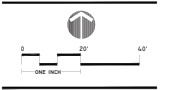


LANDSCAPE ARCHITECTURE
+ ASSOCIATES
 WWW.SASLANDARCH.COM
 219 WEST FIRST STREET, SUITE 350
 DULUTH, MN 55802
 (P) 218.391.1335

COPYRIGHT 2023 ALL DRAWN AND WRITTEN INFORMATION APPEARING HEREIN SHALL NOT BE REPLICATED, DISCLOSED OR OTHERWISE USED WITHOUT WRITTEN CONSENT OF SAS+ASSOCIATES.

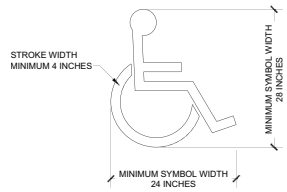
ISSUE RECORD/REVISION
 NUMBER DATE
 ADDENDUM #1 2-27-2023

**DULUTH CITY HALL
 LANDSCAPE IMPROVEMENTS**
 CITY OF DULUTH, MINNESOTA



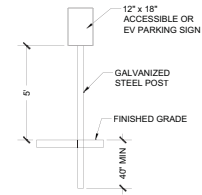
SHEET TITLE
**LANDSCAPE EXISTING
 CONDITIONS & REMOVALS**
 DATE: FEB. 2023
 DRAWN BY: LWS
 CHECKED BY: LWS
 PROJECT NUMBER
 21120
 SHEET NUMBER
 L4.1

2/27/2023 10:47 AM
 P:\2023\21120 Duluth City Hall Landscape Improvements\21120-L4.1 Landscaping Existing Conditions.dwg



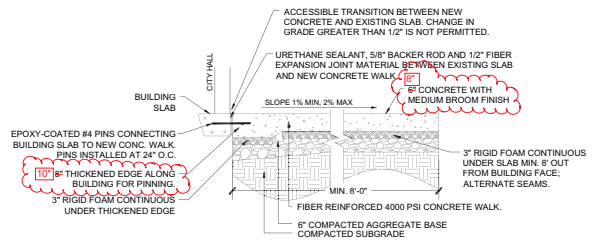
NOTES:
1. PAINT COLOR TO BE "WHITE" FOR SYMBOL.

1 INTERNATIONAL SYMBOL OF ACCESSIBILITY PARKING SPACE MARKING
SCALE: NOT TO SCALE



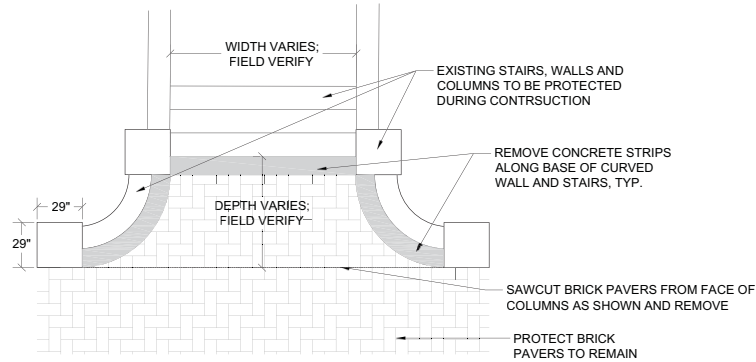
12" x 18" CODE-COMPLIANT ACCESSIBLE OR EV PARKING SIGN.

2 ACCESSIBLE & EV PARKING SIGN
SCALE: NOT TO SCALE

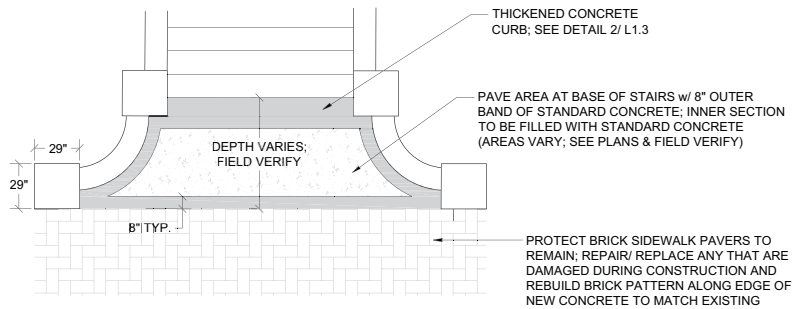


3 CONCRETE DRIVE AT BUILDING SLAB
SCALE: NOT TO SCALE

EXISTING- 1st STREET

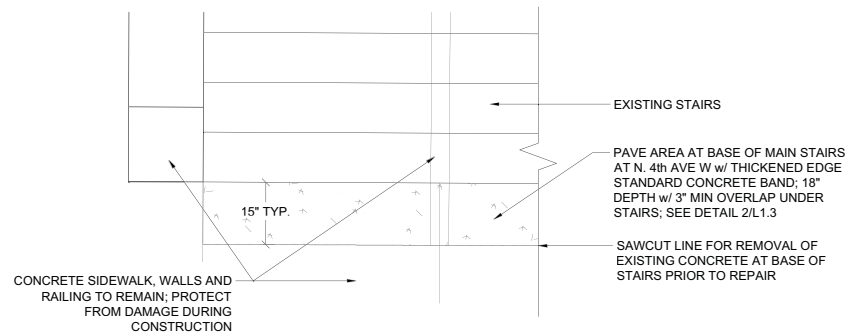


PROPOSED- 1st STREET

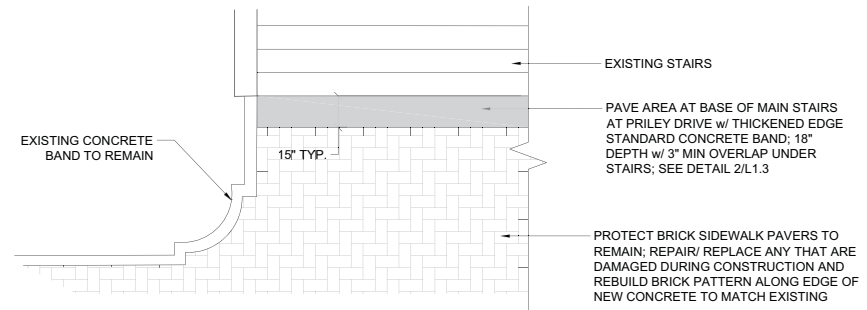


4 NEW CONCRETE AT BASE OF STAIRS
SCALE: NOT TO SCALE

PROPOSED- N. 4th AVE W



PROPOSED- PRILEY DR



LANDSCAPE ARCHITECTURE

ASSOCIATES

WWW.SAS-LANDARCH.COM

219 WEST FIRST STREET, SUITE 350
DULUTH, MN 55802
(P) 218.391.1335

COPYRIGHT 2023 ALL DRAWN AND WRITTEN INFORMATION APPEARING HEREIN SHALL NOT BE REPLICATED, DISCLOSED OR OTHERWISE USED WITHOUT WRITTEN CONSENT OF SAS/ASSOCIATES.

ISSUE RECORD/REVISION	DATE
ADDENDUM #1	2-27-2023

**DULUTH CITY HALL
GROUNDS IMPROVEMENTS**
CITY OF DULUTH, MINNESOTA

SITE DETAILS

DATE:	FEB. 2023
DRAWN BY:	LWS
CHECKED BY:	LWS
PROJECT NUMBER:	21120
SHEET NUMBER:	L1.4

P:\12301\12301.dwg 1/28/2023 10:54:00 AM

Standard 48" Concrete Security/Traffic Barrier



Product Summary

Dimensions: 48"L x 24"W x 35"H

Weight: 1,225 lbs.

Product Description

These concrete security/traffic barriers are ideal for road construction, parking lots, airports, stadiums, road closures, military bases, stadiums, parks and more.

This security barrier is constructed from pre-cast concrete for an incredibly sturdy and durable barrier option. It combines maximum protection with a decorative geometric styling to bring a unique look to your location's security.

Concrete barriers such as these are used across the country for security and control purposes to protect and manage important areas.

Product Features: - Sturdy concrete construction - Virtually maintenance free - Forklift knockouts for simple relocation -

Comes standard in grey concrete finish

Can be finished with Sherwin-Williams concrete stain (via color code)

Sherwin-Williams concrete stain is available for additional charge.

Product Attributes

- Dimensions: N/A

- Weight: 1225 lbs