

# Lakewalk Interpretive Plan

Cliff Knettel, Senior Parks Planner

---

PARKS & RECREATION COMMISSION

FEBRUARY 8, 2023



# Purpose of the Plan

---

Define specific elements and common themes for interpretation along the existing trail and the segments soon to be reconstructed during the Lakewalk resiliency and Harbor Plaza improvements.

Interpretive elements will include historical, cultural, and artistic representations of people and place.

Themes will invite visitors to gain a richer understanding of the area and create meaningful spaces for visitors to engage.

# Engagement Thus Far

---

Consultant Selected: Urban Ecosystems

- Conduct field observations, research and data collection
- Plan review of existing plans and designs for Lakewalk and Harbor Plaza
- Stakeholder engagement: Friends of the Lakewalk, Fitger's Complex, Downtown and Canal Park business groups
- Other City departments and key staff: Human Rights, Planning & Economic Development, Tourism, Administration, Property and Facilities Management
- Future engagement with these same stakeholder groups, the general public, certain City commissions

# Project Funding

---

## Harbor Plaza Improvements and Lakewalk Reconstruction

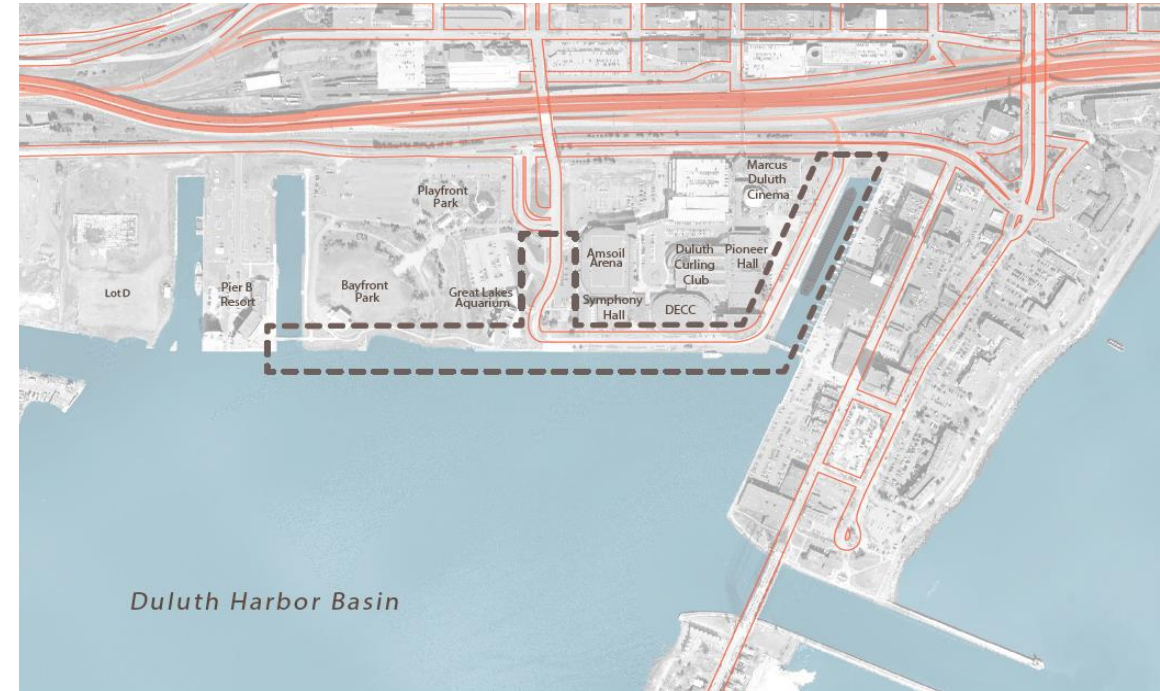
- State Bonding Award: \$13.5 million for Baywalk/Seawall, Lakewalk, and Brighton Beach
- Federal Economic Development Administration (EDA): \$5 million for harbor infrastructure/seawall to accommodate cruise ships. Additional funding needed for dredging
- City Matching Funds: \$4.9 Million

Lakewalk Interpretive Plan funding: Initial implementation phase to be incorporated into Harbor Plaza and Lakewalk final design and construction. This will primarily consist of interpretive signage, wayfinding, and two “pause areas”.

# Harbor Plaza and Lakewalk Resiliency Implementation

Harbor Plaza: Now in final design, bidding in spring 2023, construction starting summer 2023.

Lakewalk Reconstruction: Corner of the Lake (Endion Station) to 21<sup>st</sup> Avenue East in final design stage, bidding in late spring/summer, construction likely in 2024.



Some Interpretive Plan recommendations/concepts to be further developed in future planning and design initiatives and/or as funding is available.

# Interpretive Approach - Themes

---

These five themes will guide the development of interpretive elements.

- Make the waterfront a welcoming place for all peoples
- Create places for people to activate
- Uplift and empower marginalized people and cultures
- Make space for nature in the City
- Orient visitors and improve wayfinding



# Proposed Experience Districts



THE NORTH SHORE

CITY GARDENS

URBAN WILDS

FITIGERS STATION

CHIEF BUFFALO'S QUARTER

CANAL PARK

BAYWALK & DECC PLAZA

BAYFRONT PARK & THE PIERS

PARK POINT

**LEGEND**

- Lakewalk Trail & Access
- Improved Access
- Experience District Boundary
- Trail Access Point

0 500 1,000 2,000 Feet

# The Piers & Bayfront Park



Minnesota Point & Rice Point

Beer Garden

Estuary Garden

The Historic Estuary

Wall of Fame

Pier B Marina & Boat Slip

Bayfront Festival Park

Pier C Redevelopment Opportunity Area

## LEGEND

- |  |                      |  |                         |
|--|----------------------|--|-------------------------|
|  | Landmark             |  | Lakewalk Trail & Access |
|  | Overlook             |  | Improved Access         |
|  | Pause Point          |  | Pedestrian Boardwalk    |
|  | Artwork              |  | Railroad                |
|  | Freestanding Sign    |  | Beach                   |
|  | Trail Access Point   |  | Coastal Revetment       |
|  | Interpretive Element |  | Rocky Outcropping       |
|  | Concessions          |  |                         |





# Opportunities for Future Improvements

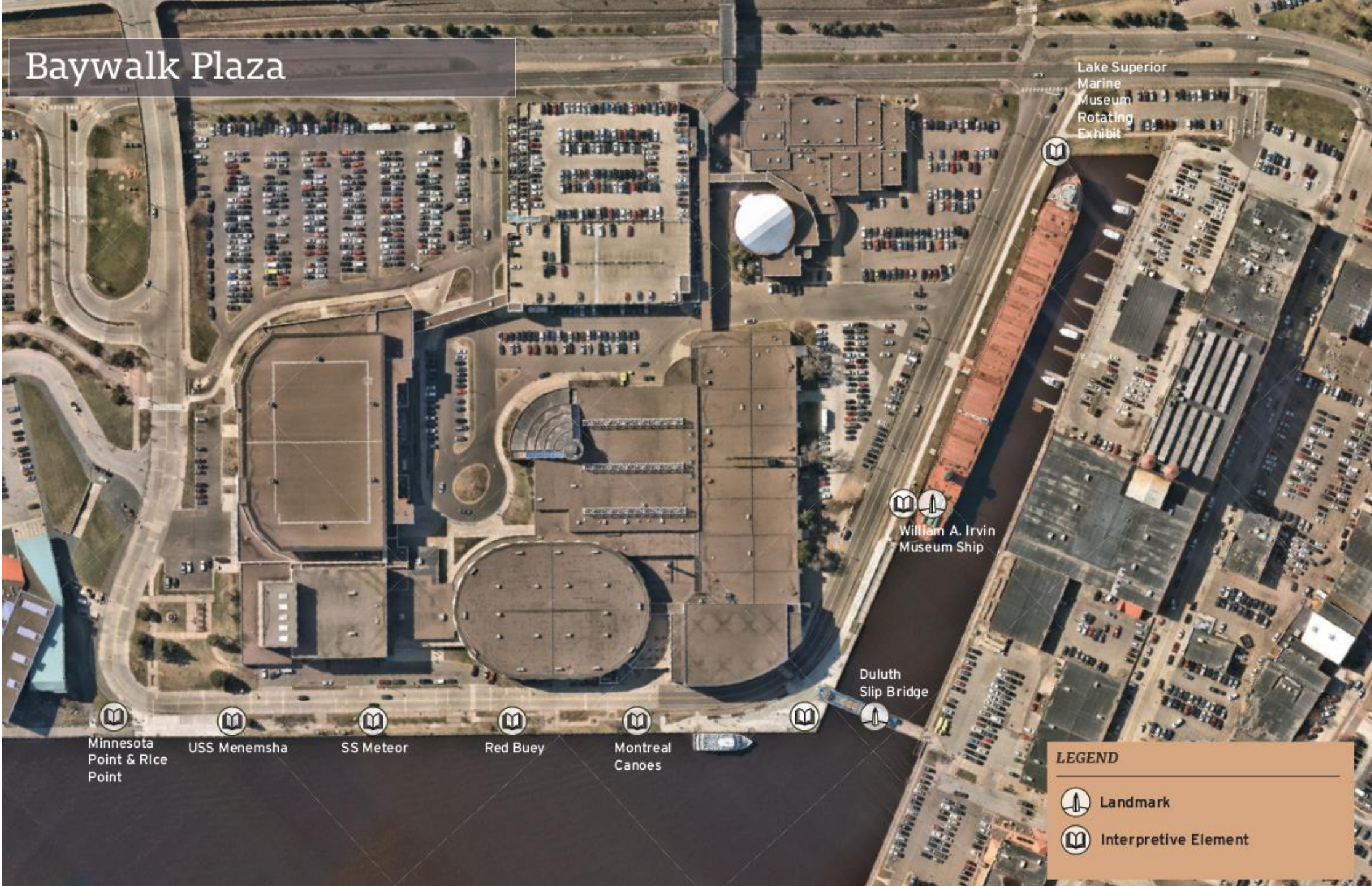
---

Some recommendations/concepts identified in the plan are to be implemented at a later time, either incorporated into future plans or designs or as funding is available.

Example below: Naturalizing shoreline stabilization while providing access to the river.



# Baywalk Plaza



Lake Superior  
Marine  
Museum  
Rotating  
Exhibit

William A. Irvin  
Museum Ship

Duluth  
Slip Bridge

Minnesota  
Point & Rice  
Point

USS Menemsha

SS Meteor

Red Buey

Montreal  
Canoes

**LEGEND**

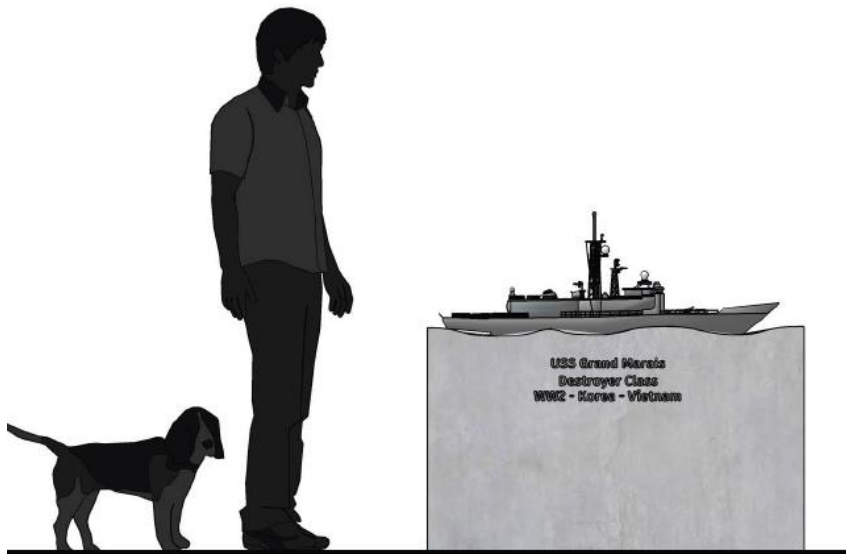
-  Landmark
-  Interpretive Element

# Interpretive Elements

## Signage

- Neishi – Minnesota Point
- Birchbark & Montreal Canoes
- Duluth's Shipyards

## Model Ships

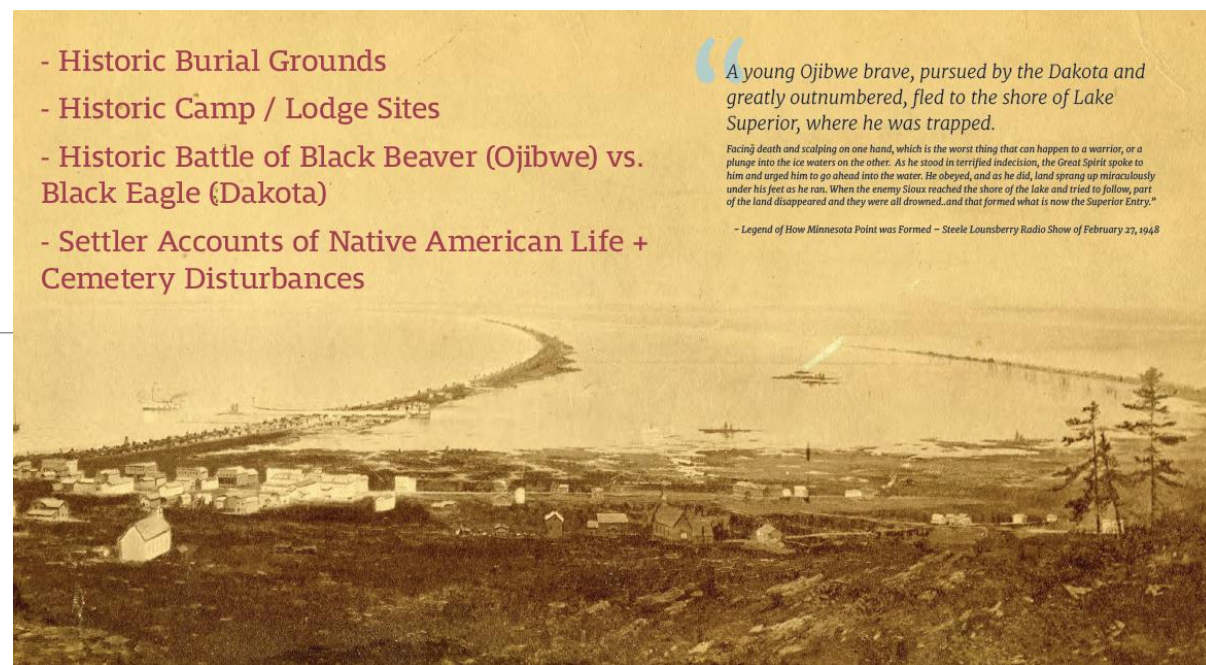


- Historic Burial Grounds
- Historic Camp / Lodge Sites
- Historic Battle of Black Beaver (Ojibwe) vs. Black Eagle (Dakota)
- Settler Accounts of Native American Life + Cemetery Disturbances

“A young Ojibwe brave, pursued by the Dakota and greatly outnumbered, fled to the shore of Lake Superior, where he was trapped.

*Facing death and scalping on one hand, which is the worst thing that can happen to a warrior, or a plunge into the ice waters on the other. As he stood in terrified indecision, the Great Spirit spoke to him and urged him to go ahead into the water. He obeyed, and as he did, land sprang up miraculously under his feet as he ran. When the enemy Sioux reached the shore of the lake and tried to follow, part of the land disappeared and they were all drowned...and that formed what is now the Superior Entry.”*

- Legend of How Minnesota Point was Formed - Steele Lounsberry Radio Show of February 27, 1948





# Wayfinding & Improving Connections

Identify opportunities to make intuitive connections

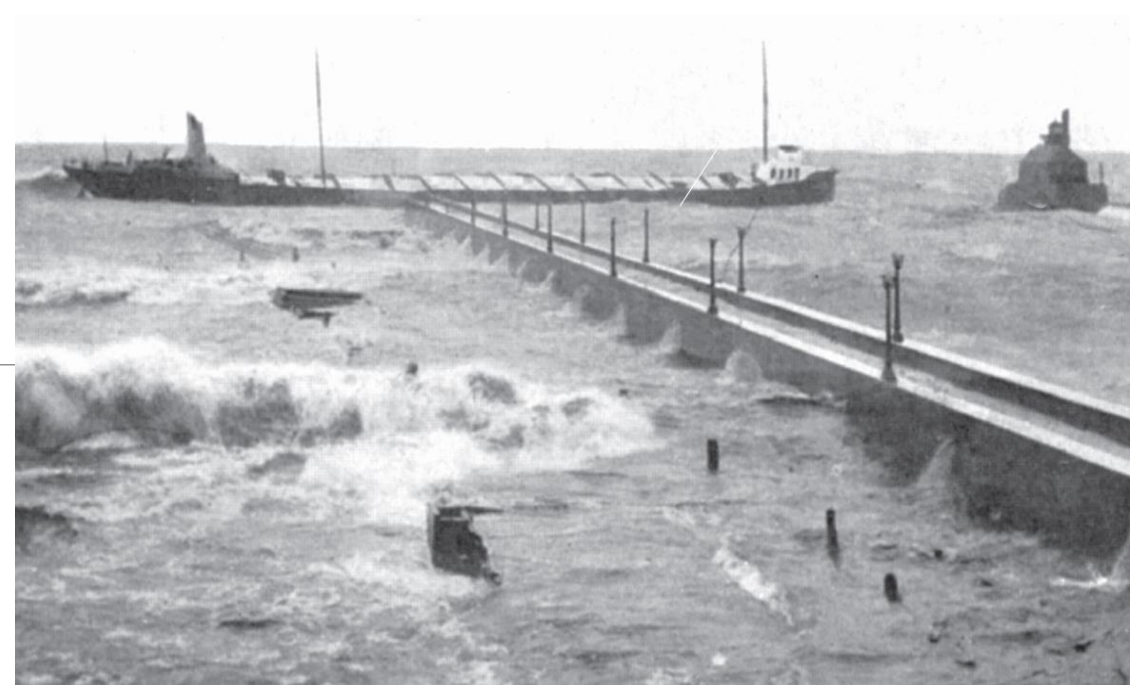
Wayfinding consistent with, or complementary to, City signage



# Interpretive Elements

## History of the Canal

- Creation of the Canal
- Wreck of the Mataafa



# Chief Buffalo's Quarter



Essentia Art Walk & Pollinator Garden

Northland Vietnam Veterans Memorial

Duluth's Lost Outer Harbor

The Crossroads

Clayton, Jackson, McGhee Memorial

Gitchi Ode Akiing Park

Duluth Mosaic Art Wall & Freestanding Sign

2nd Ave Art Wall

Chief Buffalo (Kechewaishke) Murals

Equal Justice Initiative Memorial & Park Renovation

## LEGEND

- |  |                      |  |                         |
|--|----------------------|--|-------------------------|
|  | Landmark             |  | Lakewalk Trail & Access |
|  | Overlook             |  | Improved Access         |
|  | Pause Point          |  | Pedestrian Boardwalk    |
|  | Artwork              |  | Railroad                |
|  | Freestanding Sign    |  | Beach                   |
|  | Trail Access Point   |  | Coastal Revetment       |
|  | Interpretive Element |  | Rocky Outcropping       |
|  | Concessions          |  |                         |

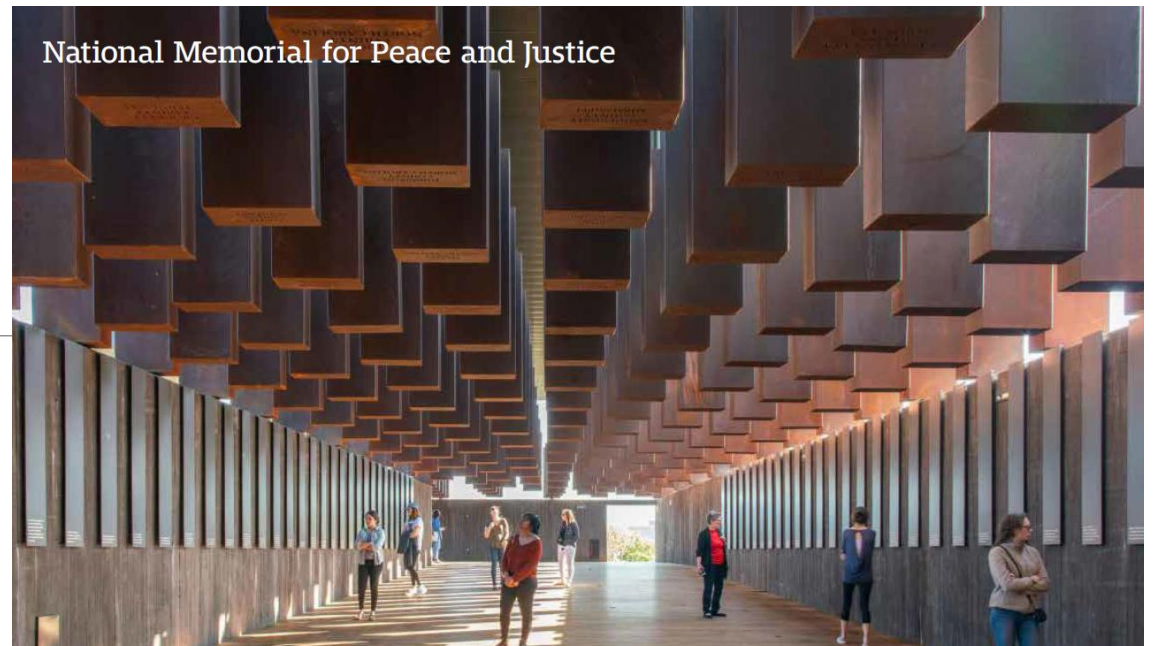


# Equal Justice Initiative

City of Duluth is slated to receive a County Monument when certain community engagement milestones are met

Location of monument has been determined to be Corner of the Lake Park near Endion Station

This “Pause Area” design will include appropriate infrastructure to display and observe the monument





# Fitgers Station



Brewing & Railroad History Walk

**LEGEND**

- Landmark
- Overlook
- Pause Point
- Artwork
- Freestanding Sign
- Trail Access Point
- Interpretive Element
- Concessions
- Informal Trail
- Bituminous Trail
- Pedestrian Boardwalk
- Improved Access
- Railroad
- Beach
- Coastal Revetment
- Rocky Outcropping

North Shore Re-Nature  
 New Plaza & Wayfinding  
 Essentia Artwalk  
 Northlands Vietnam Veterans Memorial  
 USS Duluth Memorial  
 Korean War Veterans Memorial  
 Duluth's Lost Outer Harbor  
 The Crossroads

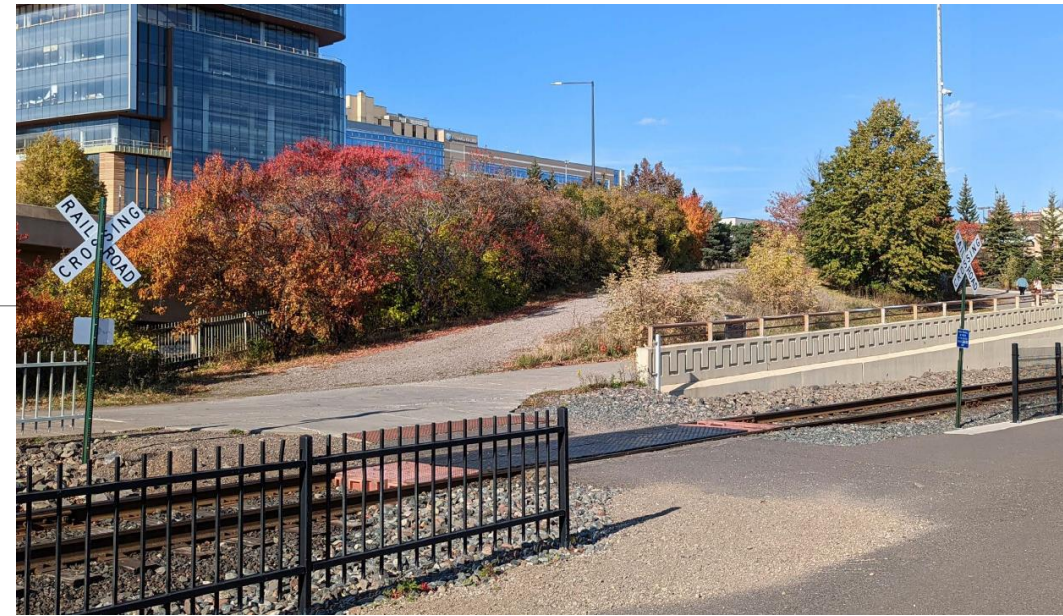
# Improving Connections

---

Orient visitors to the Lakewalk

Crossing E Superior Street

Improve access for pedestrians, bicyclists, and maintenance vehicles

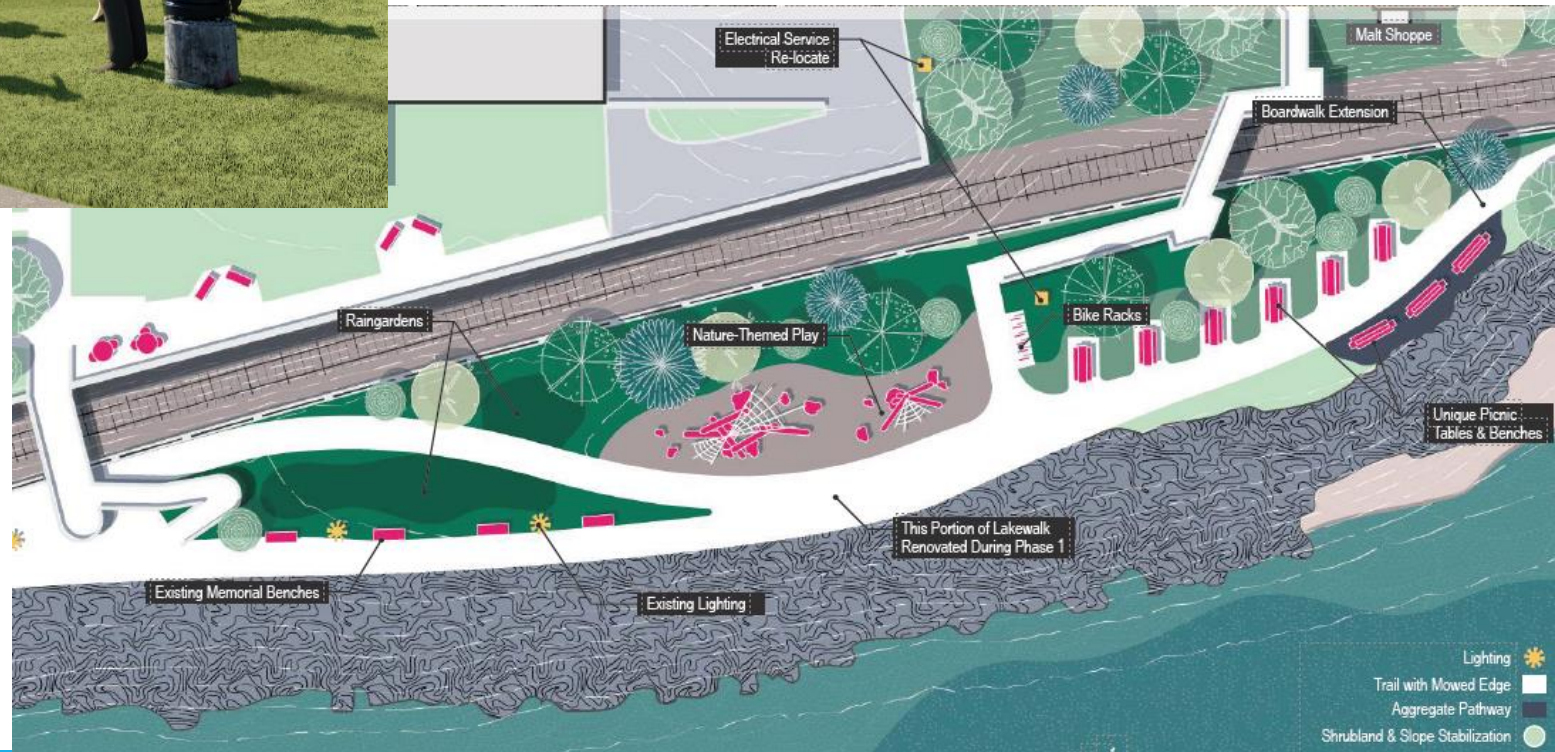


# Exploring Pause Area Opportunities

Lakewalk Resiliency Design had this area identified as a nature playscape (below)



Interpretive Plan input identified opportunity for an event lawn space (above)



# Urban Wilds



Pollinator Meadow and Bluff Walk  
 North Shore Nu-Nature  
 Coastal Resiliency Interpretive Sign  
 Grassy Knoll Overlook

Jay Cooke Statue  
 Brewery Creek Outlet  
 North Shore Nu-Nature

## LEGEND

- |  |                      |  |                         |
|--|----------------------|--|-------------------------|
|  | Landmark             |  | Lakewalk Trail & Access |
|  | Overlook             |  | Improved Access         |
|  | Pause Point          |  | Pedestrian Boardwalk    |
|  | Artwork              |  | Railroad                |
|  | Freestanding Sign    |  | Beach                   |
|  | Trail Access Point   |  | Coastal Revetment       |
|  | Interpretive Element |  | Rocky Outcropping       |
|  | Concessions          |  |                         |

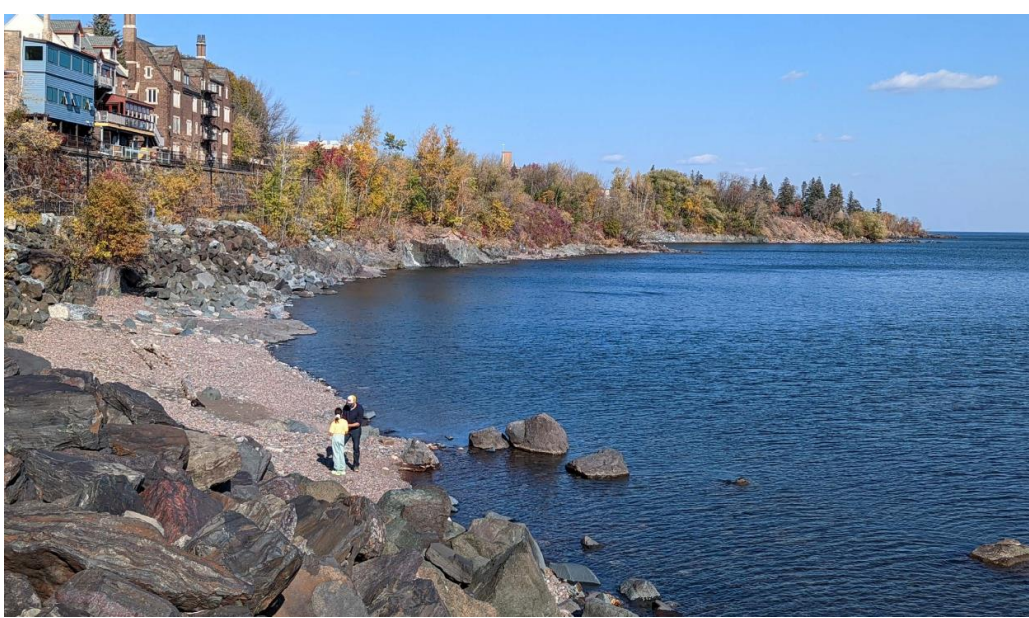


# Connections to the Lake

---

Reduce shoreline erosion and implement efforts to restore stability for long-term viability of Lakewalk, utility corridor, I35

Formalize and consolidate trails to provide better access to the water



# Interpretive Elements

---

Freestanding signage

Remnant infrastructure

Creek outfalls



# City Gardens



Glensheen Rotating Exhibit  
 Leif Erikson Statue & Entry  
 12th Avenue Overlook

Chester Creek Outlet  
 Chester Creek Picnic Area

The Viking Stair  
 Statuary & Memorial Garden  
 Leif Erikson Park Bandshell  
 Pollinator Meadow and Bluff Walk

## LEGEND

- |  |                      |  |                         |
|--|----------------------|--|-------------------------|
|  | Landmark             |  | Lakewalk Trail & Access |
|  | Overlook             |  | Improved Access         |
|  | Pause Point          |  | Pedestrian Boardwalk    |
|  | Artwork              |  | Railroad                |
|  | Freestanding Sign    |  | Beach                   |
|  | Trail Access Point   |  | Coastal Revetment       |
|  | Interpretive Element |  | Rocky Outcropping       |
|  | Concessions          |  |                         |



# Improving Connections

---

Connections through, between, and around park spaces

Leif Erikson bypass (future phase)





# Interpretive Elements

---



# The North Shore



**LEGEND**

	Landmark		Lakewalk Trail & Access
	Overlook		Improved Access
	Pause Point		Pedestrian Boardwalk
	Artwork		Railroad
	Freestanding Sign		Beach
	Trail Access Point		Coastal Revetment
	Interpretive Element		Rocky Outcropping
	Concessions		

0 90 180 360 Feet

# Improving Connections

## I35 Overpasses

- S 16<sup>th</sup> AVE E
- Near Edgewater Hotel

Improve connection to neighborhoods and other bike/pedestrian routes



FEBRUARY 2023						
Su	Mo	Tu	We	Th	Fr	Sa
29	30	31	1	2	3	4
5	6	7	8	9	10	11
12	13	14	15	16	17	18
19	20	21	22	23	24	25
26	27	28	1	2	3	4
5	6	7	8	9	10	11

# Next Steps

MARCH 2023						
Su	Mo	Tu	We	Th	Fr	Sa
26	27	28	1	2	3	4
5	6	7	8	9	10	11
12	13	14	15	16	17	18
19	20	21	22	23	24	25
26	27	28	29	30	31	1
2	3	4	5	6	7	8

## Public Meetings

- Wednesday, February 15 at 6 PM  
Duluth City Hall, Conference Room 330
- Thursday, February 16 at 6 PM  
Virtual via Webex

APRIL 2023						
Su	Mo	Tu	We	Th	Fr	Sa
26	27	28	29	30	31	1
2	3	4	5	6	7	8
9	10	11	12	13	14	15
16	17	18	19	20	21	22
23	24	25	26	27	28	29
30	1	2	3	4	5	6

Draft Plan presentation to Parks and Recreation Commission on April 19

MAY 2023						
Su	Mo	Tu	We	Th	Fr	Sa
30	1	2	3	4	5	6
7	8	9	10	11	12	13
14	15	16	17	18	19	20
21	22	23	24	25	26	27
28	29	30	31	1	2	3
4	5	6	7	8	9	10

Final Plan presentation for Parks and Recreation Commission approval on May 10

# For More Information

---

Lakewalk Interpretive Plan: <https://duluthmn.gov/parks/parks-planning/progress-in-the-park/lakewalk-interpretive-plan/>

Lakewalk Resiliency Design: <https://duluthmn.gov/parks/parks-planning/progress-in-the-park/lakewalk-resiliency-project/>

Harbor Plaza Design: <https://duluthmn.gov/parks/parks-planning/progress-in-the-park/harbor-plazabaywalkseawall/>

**Cliff Knettel, Senior Parks Planner**

218-730-4312

cknettel@duluthmn.gov