

- CONCRETE NOTES**
1. All designs and calculations shall be based on a minimum bearing capacity of 80,000 psi. Footings shall be placed on clean, undisturbed soil having a minimum bearing capacity of 4000 psf. This soil bearing capacity shall be verified after excavation but prior to placement of any foundations. The architect shall be notified immediately if adverse soil conditions are encountered during excavation.
  2. Concrete shall have the following minimum compressive ultimate strength at 28 days:
    - a. Footings and walls..... 3000 psi.
    - b. Columns, beams, slabs and stairs..... 5000 psi.
  3. Reinforcing for concrete shall conform to ASTM A615, Grade 60, shall be fabricated, delivered and erected according to ACI-301, 115 and 118, latest editions, and have a yield strength of 60,000 psi. welded wire fabric shall conform to ASTM A-185.
  4. Structural steel shall conform to ASTM A-36 and shall be detailed, fabricated and erected according to the "Specification for Design, Fabrication and Erection of Structural Steel for Buildings" by the American Institute of Steel Construction, 7th Edition.
  5. All bolts shall conform to ASTM A-325-U.
  6. All welds shall conform to current AISC Specifications.

**FOOTING SCHEDULE**

MARK	SIZE	THICKNESS	REINFORCEMENT	REMARKS
(A)	36" DIAMETER	18"	#10 VERTICAL	CAISSON PILE ON ROCK
(B)	48" DIAMETER	18"	#11 VERTICAL	CAISSON PILE ON ROCK
(C)	48" x 18"	18"	#10 BENCH WAY	
(D)	54" CONTINUOUS	18"	#10 BENCH WAY	
(E)	48" x 18"	18"	#10 BENCH WAY	
(F)	36" x 18"	18"	#10 BENCH WAY	
(G)	36" CONTINUOUS	18"	#10 BENCH WAY	

**Gunnar Birkerts and Associates Architects**  
 509 Hayes Street, Birmingham, Michigan  
 Tel: 844-0804

**Robert M. Darvas & Associates**  
 STRUCTURAL ENGINEERS  
 ANN ARBOR, MICHIGAN

**Hoyem-Basso Associates Incorporated**  
 MECHANICAL & ELECTRICAL ENGINEERS  
 BLOOMFIELD HILLS, MICHIGAN

**Duluth Public Library**  
 DULUTH, MINNESOTA

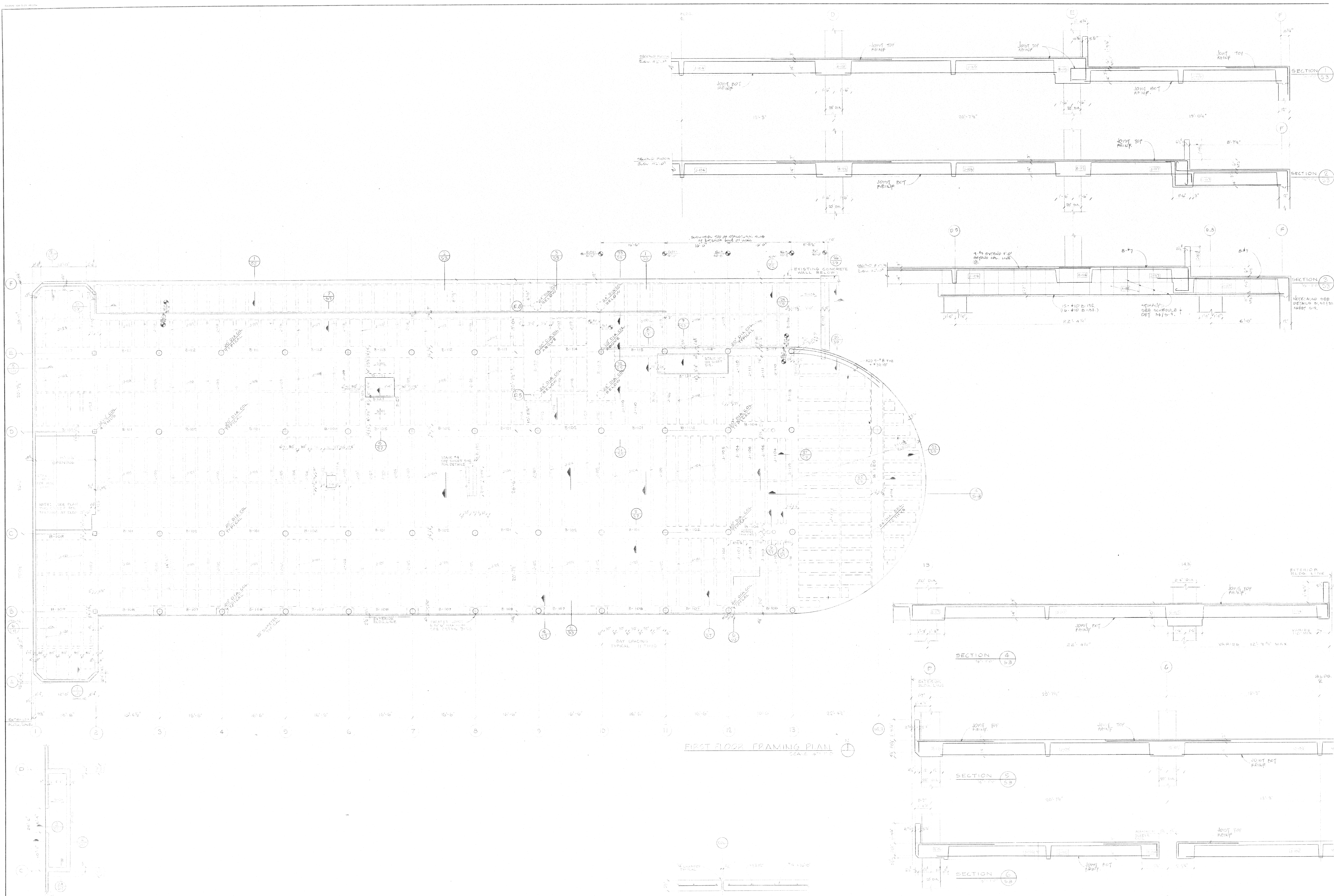
DESIGN AND CONSTRUCTION  
 10/18/12

ED: P/W 6/11-12/12

REVISIONS		
ITEM	DATE	BY

DRAWN: SLS/12/12  
 CHECKED: SLS  
 APPROVED: [Signature]  
 DATE: 10/18/12  
 SCALE: AS SHOWN  
 PROJECT: 7612 S-1

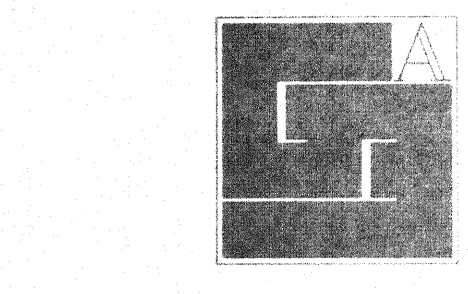




FIRST FLOOR FRAMING PLAN  
SCALE 1/8" = 1'-0"

PARTIAL PLAN  
AT ELEVATION 57.0'

TYPICAL PARAPET  
PLAN @ EARLY LEVEL



**Gunnar Birkerts  
and  
Associates  
Architects**

tel 644.0094  
908 Haynes street Birmingham Michigan

**Robert M. Darvas  
&  
Associates**  
STRUCTURAL ENGINEERS  
ANN ARBOR, MICHIGAN

**Hoyem-Basso  
Associates  
Incorporated**  
MECHANICAL & ELECTRICAL ENGINEERS  
BLOOMFIELD HILLS, MICHIGAN

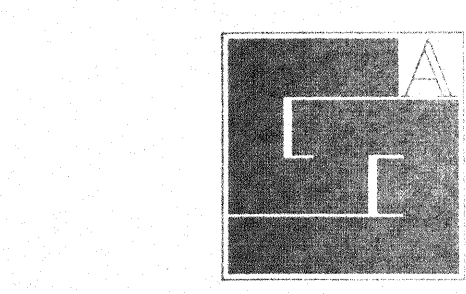
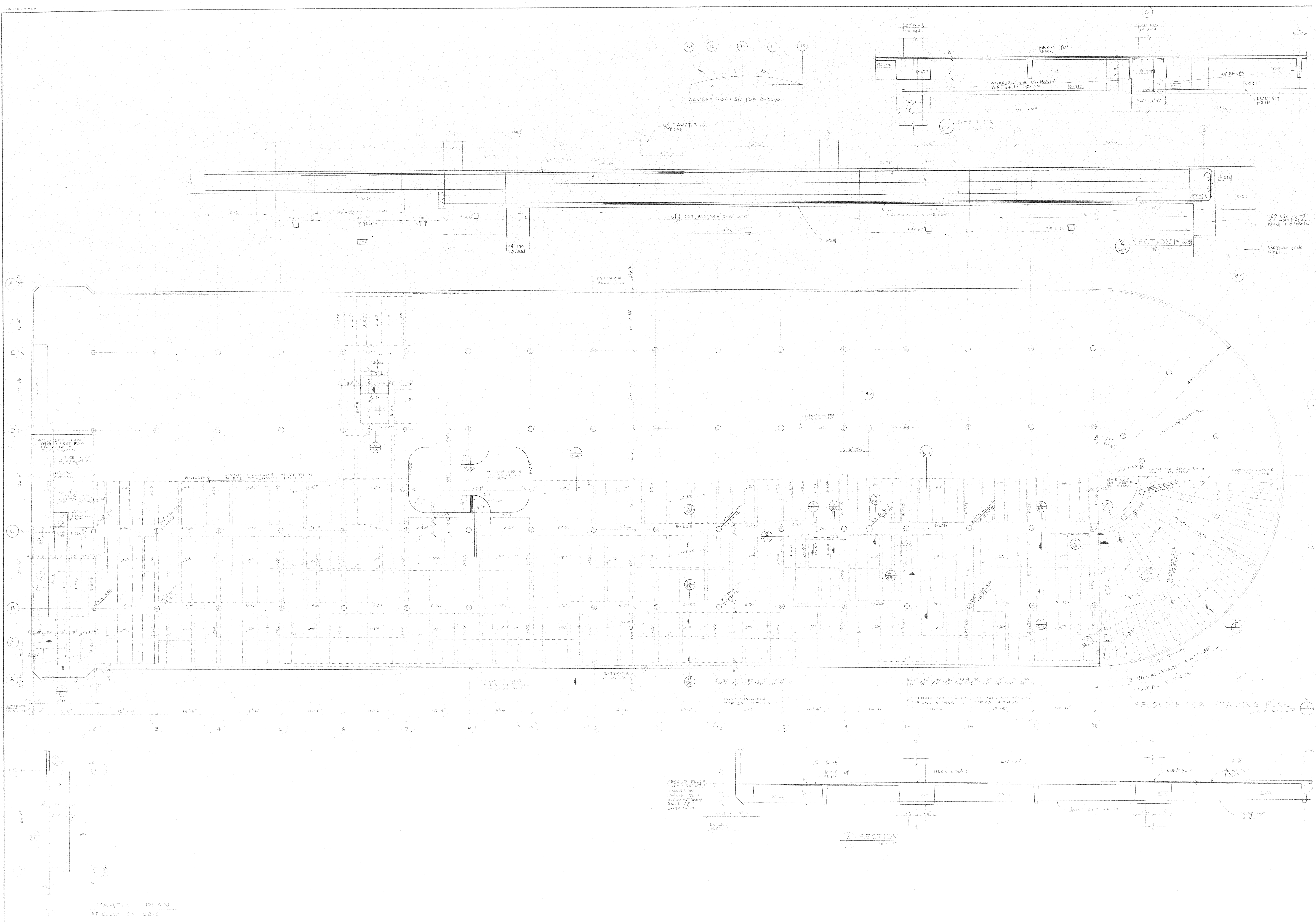
**Duluth Public  
Library**  
DULUTH, MINNESOTA

FIRST FLOOR  
FRAMING PLAN  
10/15/2004  
EDA (PW 06-01-0276)

REVISIONS		
ITEM	DATE	BY

DRAWN: S.K. DDT  
CHECKED: A.H.J.  
APPROVED: R.M.D.  
DATE: 10/15/04  
SCALE: 1/8" = 1'-0"

PROJECT: 7612 **S-3**



**Gunnar Birkerts  
and  
Associates  
Architects**

tel 444 6804  
309 Haynes street Birmingham Michigan

**Robert M. Darvas  
&  
Associates**  
STRUCTURAL ENGINEERS  
ANN ARBOR, MICHIGAN

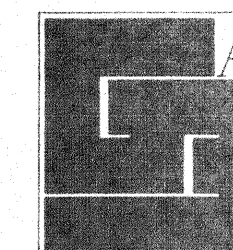
**Hoyem-Basso  
Associates  
Incorporated**  
MECHANICAL & ELECTRICAL  
ENGINEERS  
BLOOMFIELD HILLS, MICHIGAN

**Duluth  
Public  
Library**  
DULUTH, MINNESOTA

SECOND FLOOR  
FRAMING PLAN  
AND SECTION  
CDA 17W 66-51-02786

REVISIONS		
ITEM	DATE	BY

DRAWN: SSK, PHK  
CHECKED: PLW  
APPROVED: PLW  
APPROVED FOR CONSTRUCTION  
DATE: APRIL 7, 1972  
SCALE: AS SHOWN  
PROJECT:



Gunnar Birkerts  
and  
Associates  
Architects

tel 644 0604  
909 Hayes street Birmingham Michigan

Robert M. Darvas  
&  
Associates  
STRUCTURAL ENGINEERS  
ANN ARBOR, MICHIGAN

Hoyem-Basso  
Associates  
Incorporated  
MECHANICAL & ELECTRICAL  
ENGINEERS  
BLOOMFIELD HILLS, MICHIGAN

Duluth  
Public  
Library  
DULUTH, MINNESOTA

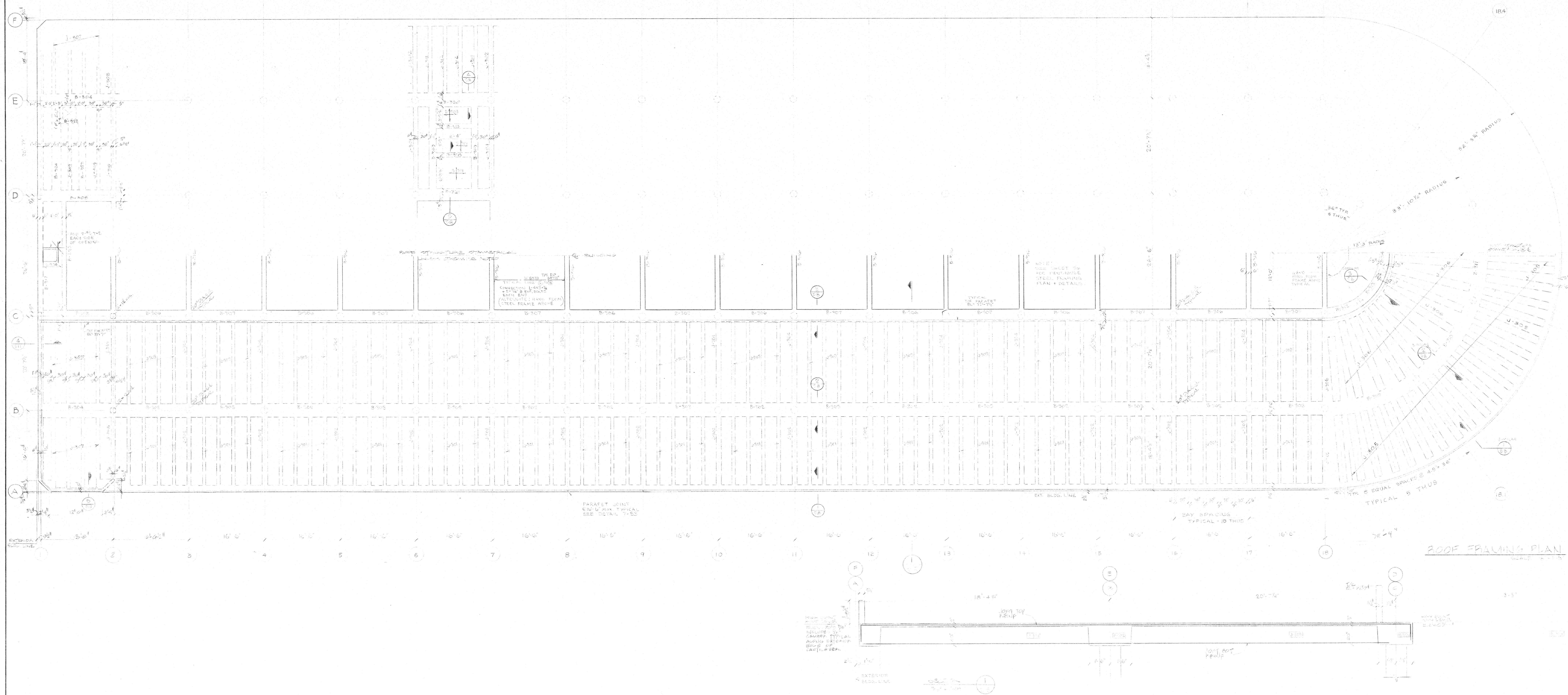
THIS  
FRAMING PLAN  
AND SECTIONS

EDA / FW 04-51-0276F

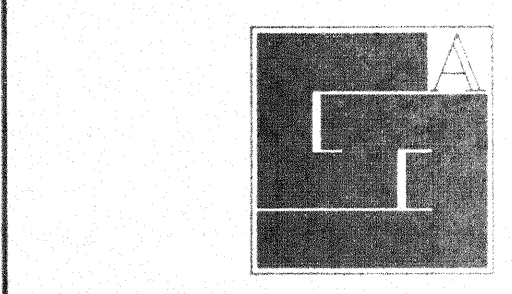
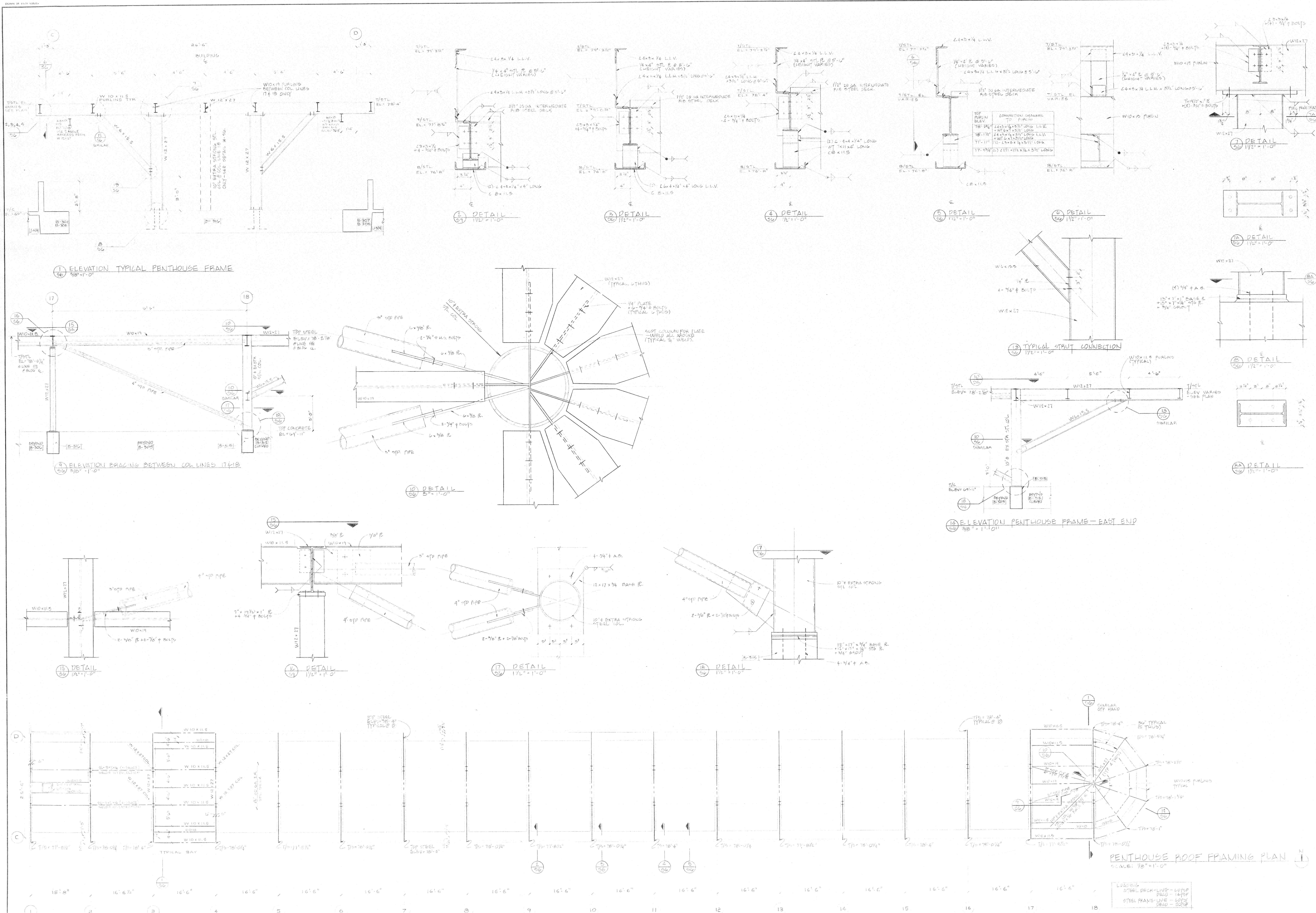
REVISIONS		
ITEM	DATE	BY

DRAWN E.S.D. DPK  
CHECKED K.J.W.  
APPROVED R.M.D.  
DATE APR 2, 1971  
SCALE AS SHOWN

PROJECT  
7612 S-5



200F FRAMING PLAN



**Gunnar Birkerts and Associates Architects**

1st 444 0000  
222 Harmon Street Birmingham Michigan

**Robert M. Darvas & Associates**  
STRUCTURAL ENGINEERS  
ANN ARBOR, MICHIGAN

**Hoeym-Basso Associates Incorporated**  
MECHANICAL & ELECTRICAL ENGINEERS  
BLOOMFIELD HILLS, MICHIGAN

**Duluth Public Library**  
DULUTH, MINNESOTA

PENTHOUSE ROOF FRAMING PLAN AND DETAILS

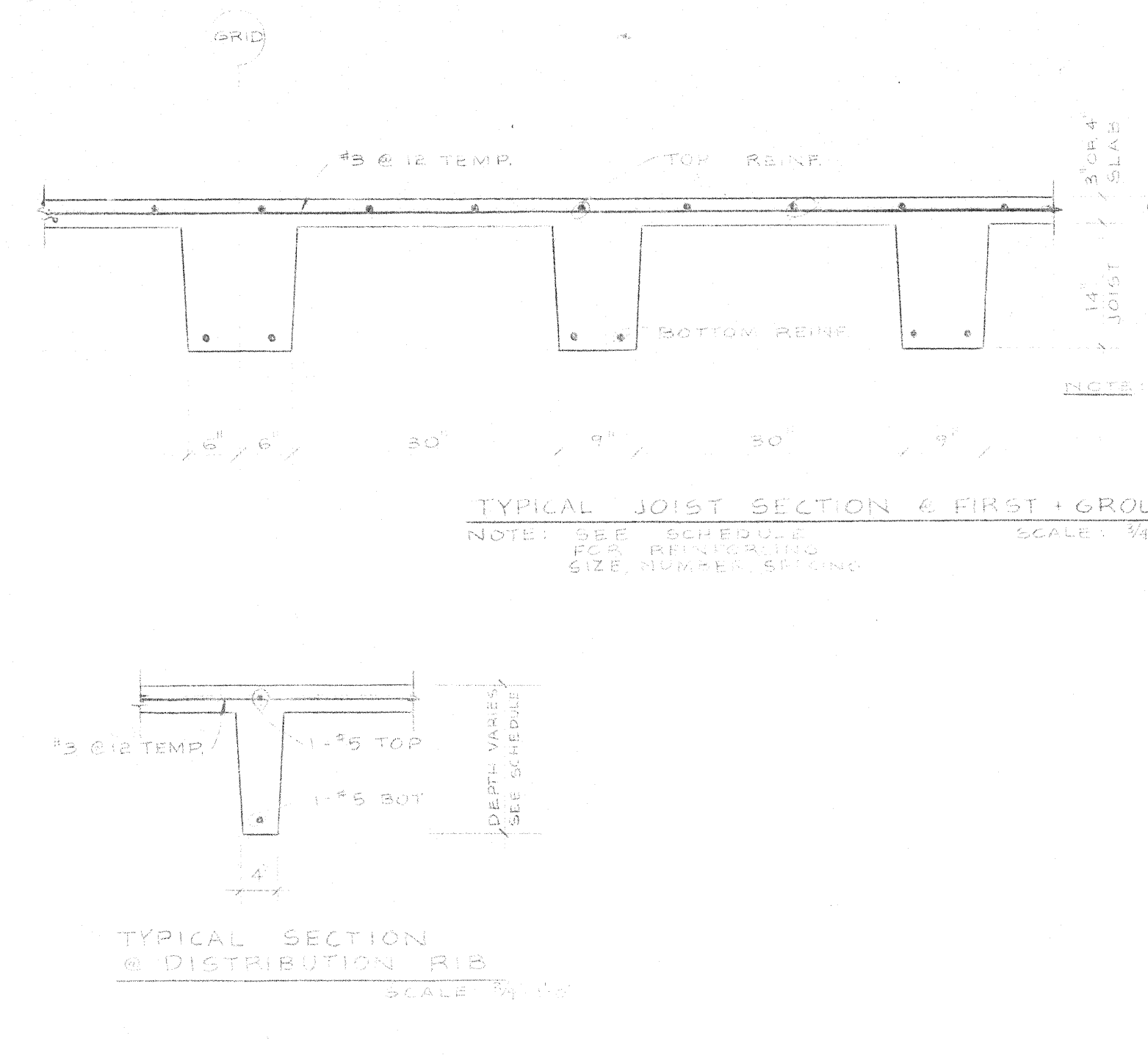
EDA: PW 06-01-02186

REVISIONS	ITEM	DATE	BY

DRAWN: SGA, DMV  
CHECKED: KJW  
APPROVED: RME  
DATE: 2001.7.19.97  
SCALE: AS SHOWN

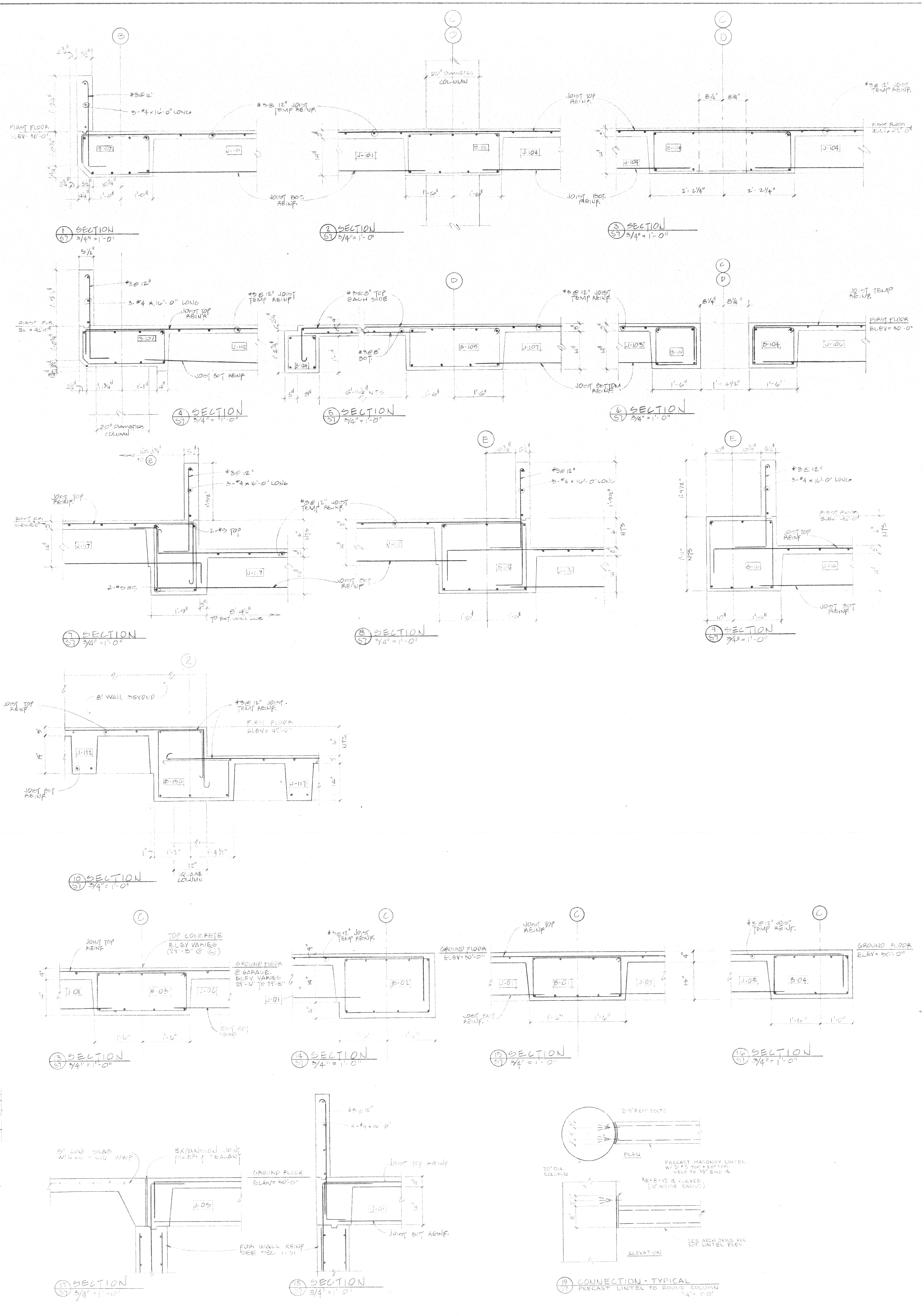
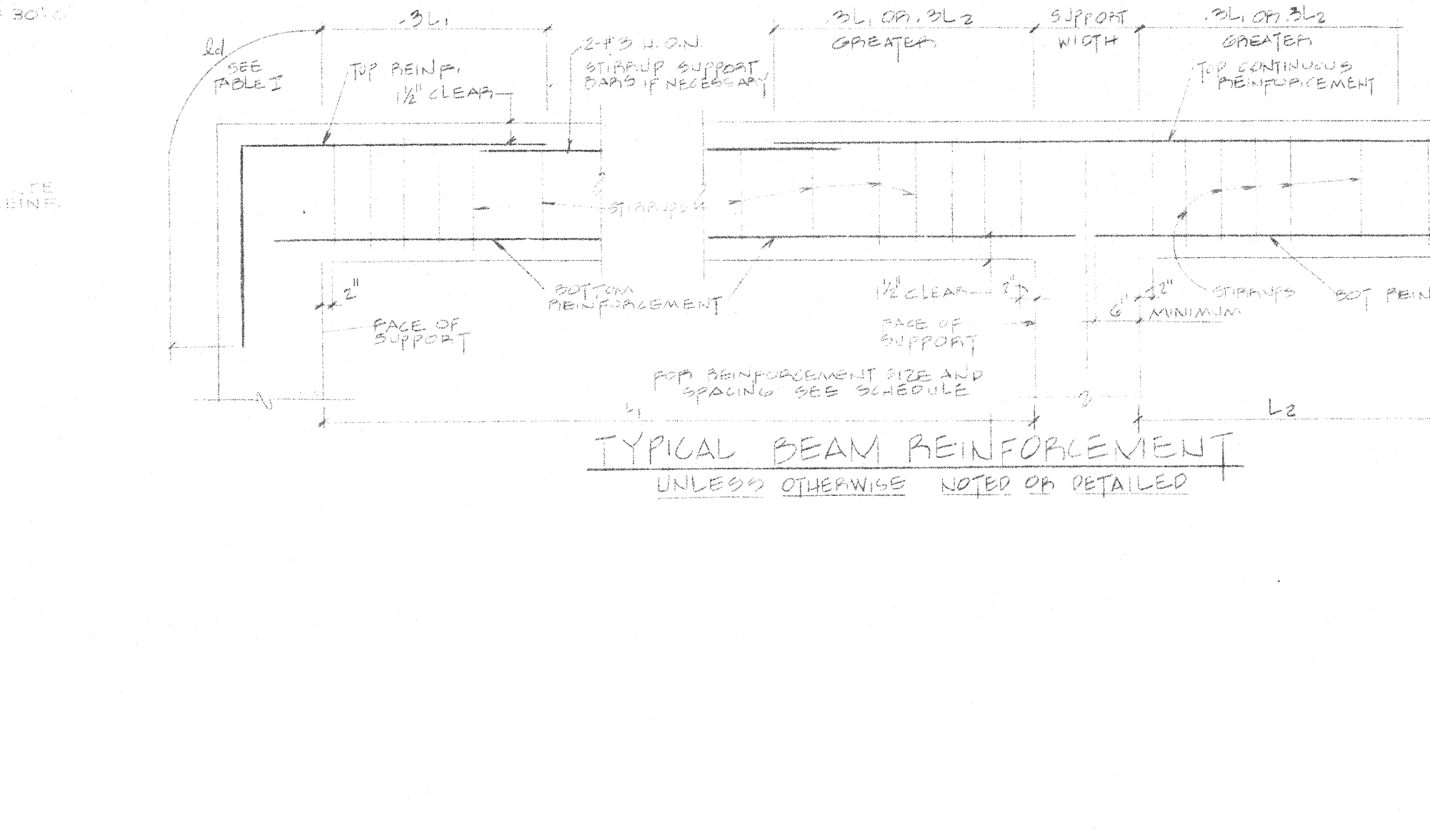
**JOIST SCHEDULE**

MARK	SIZE		REINFORCEMENT		REMARKS
	WIDTH	DEPTH	BOTTOM	TOP	
J-01	9	14.4	2-#5		SEE J-03 FOR TOP REIN.
J-02	12	14.4	1-#5		SEE J-04 FOR TOP REIN.
J-03	9	14.4	2-#6	4#12	INTO WALL (NORTH)
J-04	32 1/2	14.4	5-#6	4#12	CONTINUOUS OVER J-01 (SOUTH)
J-05	9	14.4	2-#5	4#12	INTO WALL (NORTH)
J-06	9	14.4	2-#6	4#12	CONTINUOUS OVER J-01 (SOUTH)
J-07	9	14.4	2-#6	4#12	INTO WALL (NORTH)
J-08	12	14.4	1-#7	4#12	CONTINUOUS OVER J-02 (SOUTH)
J-09	7 1/2	14.4	2-#6	4#12	INTO WALL (NORTH)
J-10	11 1/2	14.4	1-#6	4#12	INTO B-02 (NORTH)
J-11	9	14.4	2-#5	4#12	INTO WALL (SOUTH)
J-101	9	14.3	2-#6	4#12	OVER INTERIOR BEAM (NORTH)
J-102	12	14.3	2-#6	4#12	OVER INTERIOR BEAM (SOUTH)
J-103	9	14.3	2-#7	4#12	INTO EXTERIOR BEAM (NORTH)
J-104	9	14.3	2-#6	4#12	INTO EXTERIOR BEAM (SOUTH)
J-105	12	14.3	1-#6	4#12	INTO B-104 (NORTH + SOUTH)
J-106	9	14.3	1-#6	4#12	OVER B-105 (NORTH)
J-107	9	14.3	1-#7	4#12	OVER B-105 (SOUTH)
J-108	9	14.3	2-#5	4#12	OVER BEAM (NORTH)
J-109	12	14.3	1-#6	4#12	OVER BEAM (SOUTH)
J-110	7	14.3	2-#5	4#12	INTO BEAM (NORTH)
J-111	9	14.3	1-#7	4#12	INTO BEAM (SOUTH)
J-112	9	14.3	2-#5	4#12	INTO BEAM (NORTH)
J-113	9	14.3	1-#6	4#12	OVER BEAM (SOUTH)
J-114	9	14.3	1-#6	4#12	EXPAND 1/2" OVER J-114
J-115	9	14.3	1-#6	4#12	EXPAND 1/2" OVER J-115
J-116	9	14.3	2-#6	4#12	INTO WALL (NORTH)
J-117	9	14.3	1-#6	4#12	INTO WALL (SOUTH)
J-118	12	14.3	1-#6	4#12	INTO WALL (NORTH)
J-119	14	14.3	2-#6	4#12	INTO BEAM (SOUTH)
J-120	7	14.3	1-#6	4#12	OVER BEAM (NORTH)
J-121	9	14.3	1-#6	4#12	INTO BEAM (SOUTH)
J-122	9	14.3	1-#6	4#12	INTO BEAM (SOUTH)
J-123	9	14.3	1-#6	4#12	OVER BEAM (SOUTH)
J-124	9	14.3	2-#5	4#12	SEE DETAIL B-124
J-125	12	14.3	2-#5	4#12	INTO BEAM (SOUTH)
J-126	12	14.3	2-#5	4#12	INTO BEAM (SOUTH)
J-127	11 1/2	14.3	2-#6	4#12	OVER BEAM (SOUTH)



**BEAM SCHEDULE**

MARK	SIZE		REINFORCEMENT		STIRRUPS	REMARKS
	WIDTH	DEPTH	BOTTOM	TOP		
B-01	36	18	5-#7	4-#7	#3	TOP BARS EACH END
B-02	36	20	4-#7	5-#8	#3	TOP BARS EACH END
B-03	36	24	4-#7	5-#8	#3	TOP BARS EACH END
B-04	30	18	3-#7	5-#8	#3	TOP BARS EACH END
B-05	18 1/2	18	2-#7	2-#7	#3	TOP BARS EACH END
B-06	8	18	2-#7	2-#7	#3	TOP BARS EACH END
B-07	8	18	2-#5	2-#5	#3	TOP BARS EACH END
B-08	8	18	2-#5	2-#5	#3	TOP BARS EACH END
B-101	36	17	4-#8	5-#8	#3	TOP BARS EACH END
B-102	36	17	4-#8	5-#8	#3	TOP BARS EACH END
B-103	30	17	6-#8	7-#8	#3	SEE DETAIL B-103 FOR ADDITIONAL REINFORCEMENT
B-104	32 1/2	17	4-#8	5-#8	#3	TOP BARS EACH END
B-105	36	17	4-#8	5-#8	#3	TOP BARS EACH END
B-106	20 1/4	17	4-#6	4-#7	#3	TOP BARS EACH END
B-107	18 1/4	17	5-#6	4-#7	#3	TOP BARS EACH END
B-108	20 1/4	17	4-#6	4-#7	#3	TOP BARS EACH END
B-109	36	17	4-#8	5-#8	#3	TOP BARS EACH END
B-110	36	17	4-#8	5-#8	#3	TOP BARS EACH END
B-111	30	17	4-#7	5-#8	#3	TOP BARS EACH END
B-112	36	17	4-#7	4-#8	#3	TOP BARS EACH END
B-113	36	17	4-#7	4-#8	#3	TOP BARS EACH END
B-114	36	17	4-#7	4-#8	#3	TOP BARS EACH END
B-115	36 1/4	23	4-#8	5-#8	#3	TOP BARS EACH END
B-116	20 1/4	23	4-#8	5-#8	#3	TOP BARS EACH END
B-117	34 1/4	23	4-#8	5-#8	#3	TOP BARS EACH END
B-118	36	17	4-#7	5-#8	#3	TOP BARS EACH END
B-119	36	17	4-#8	6-#8	#3	TOP BARS EACH END
B-120	36	24	9-#9	7-#9	#3	TOP BARS EACH END
B-121	12	11	2-#8	2-#8	#3	TOP BARS EACH END
B-122	10	17	4-#8	5-#8	#3	TOP BARS EACH END
B-123	19	17	5-#8	3-#6	#3	TOP BARS EACH END
B-124	8	17	2-#5	2-#5	#3	TOP BARS EACH END
B-125	17	17	4-#6	4-#7	#3	TOP BARS EACH END
B-126	10	17	2-#5	2-#5	#3	TOP BARS EACH END
B-127	10	17	2-#7	4-#7	#3	TOP BARS EACH END
B-128	12	42	3-#7	3-#7	#3	TOP BARS EACH END
B-129	15 1/2	17	2-#8	2-#7	#3	TOP BARS EACH END
B-130	30 1/2	17	2-#6	2-#6	#3	TOP BARS EACH END
B-131	12	17	2-#5	2-#5	#3	TOP BARS EACH END
B-132	8 1/2	25	15-#10	9-#9	#3	SEE DETAIL B-132
B-133	8 1/2	25	16-#10	9-#9	#3	SEE DETAIL B-133
B-134	11	17	2-#7	2-#6	#3	TOP BARS EACH END
B-135	32	17	4-#6	4-#8	#3	TOP BARS EACH END
B-136	20 1/2	17	3-#7	3-#7	#3	TOP BARS EACH END
B-137	12	VARIES	2-#5	3-#6	#3	TOP BARS SOUTH END ONLY
B-137A	12	VARIES	3-#7	3-#7	#3	TOP BARS CONTINUOUS



**Gunnar Birkerts and Associates Architects**  
 Tel: 644.0604  
 909 Hayes Street, Birmingham, Michigan

**Robert M. Darvas & Associates**  
 STRUCTURAL ENGINEERS  
 ANN ARBOR, MICHIGAN

**Hoyem-Basso Associates Incorporated**  
 MECHANICAL & ELECTRICAL ENGINEERS  
 BLOOMFIELD HILLS, MICHIGAN

**Duluth Public Library**  
 DULUTH, MINNESOTA

REVISIONS

ITEM	DATE	BY

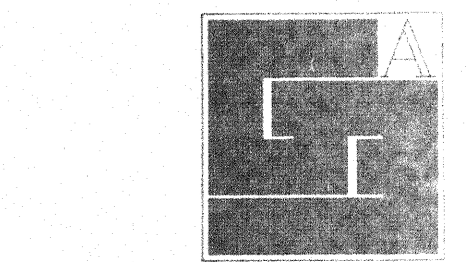
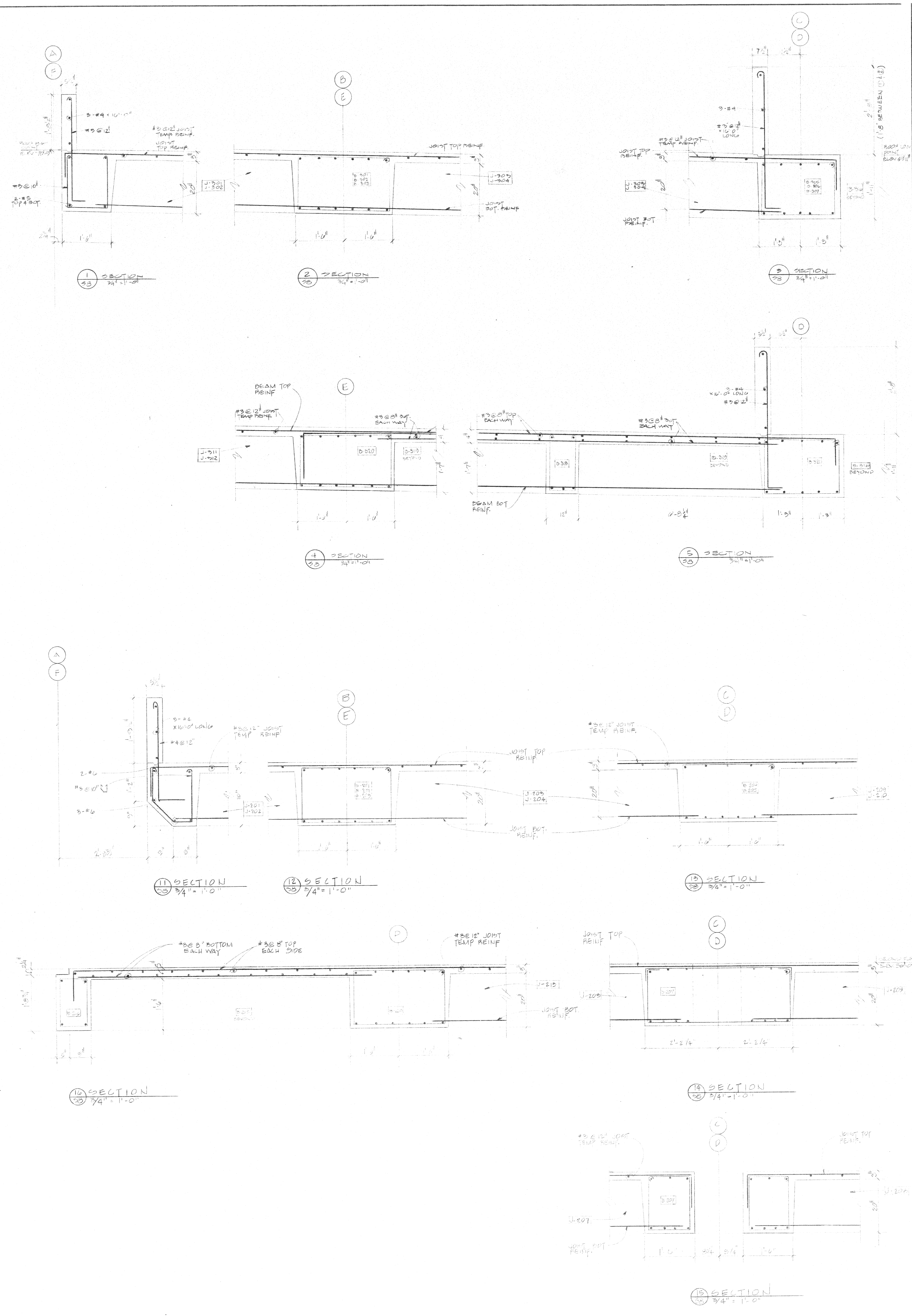
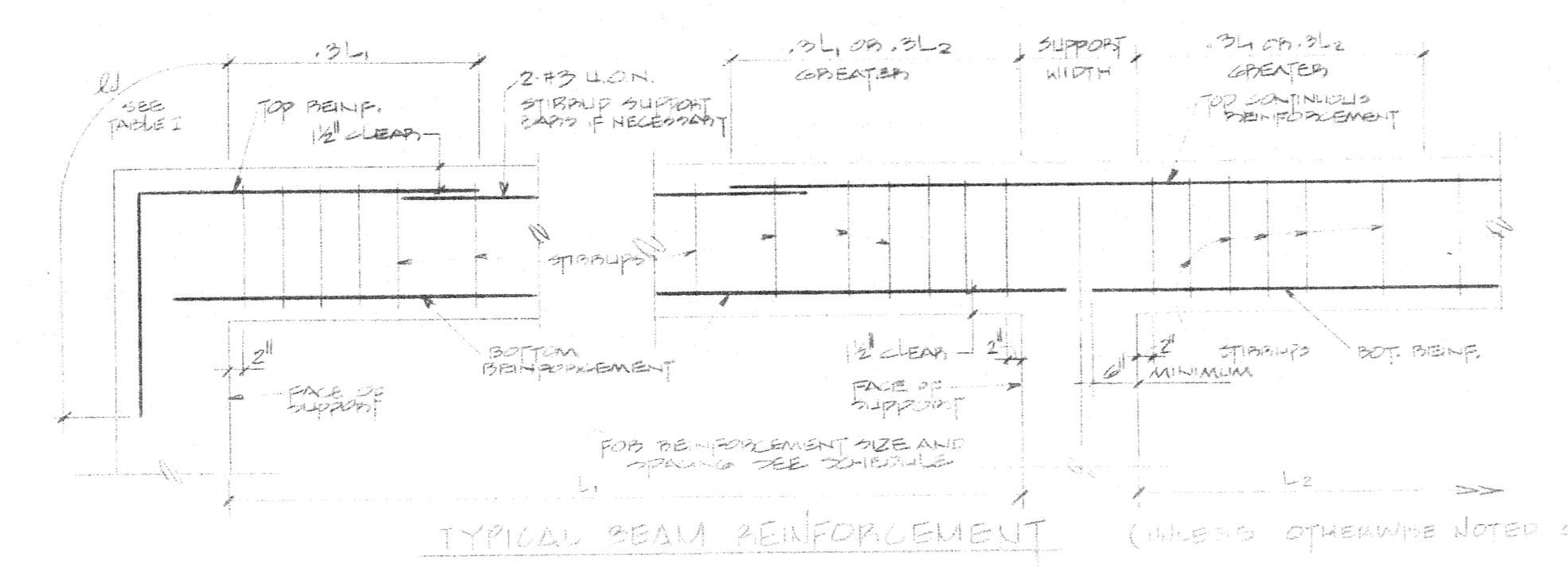
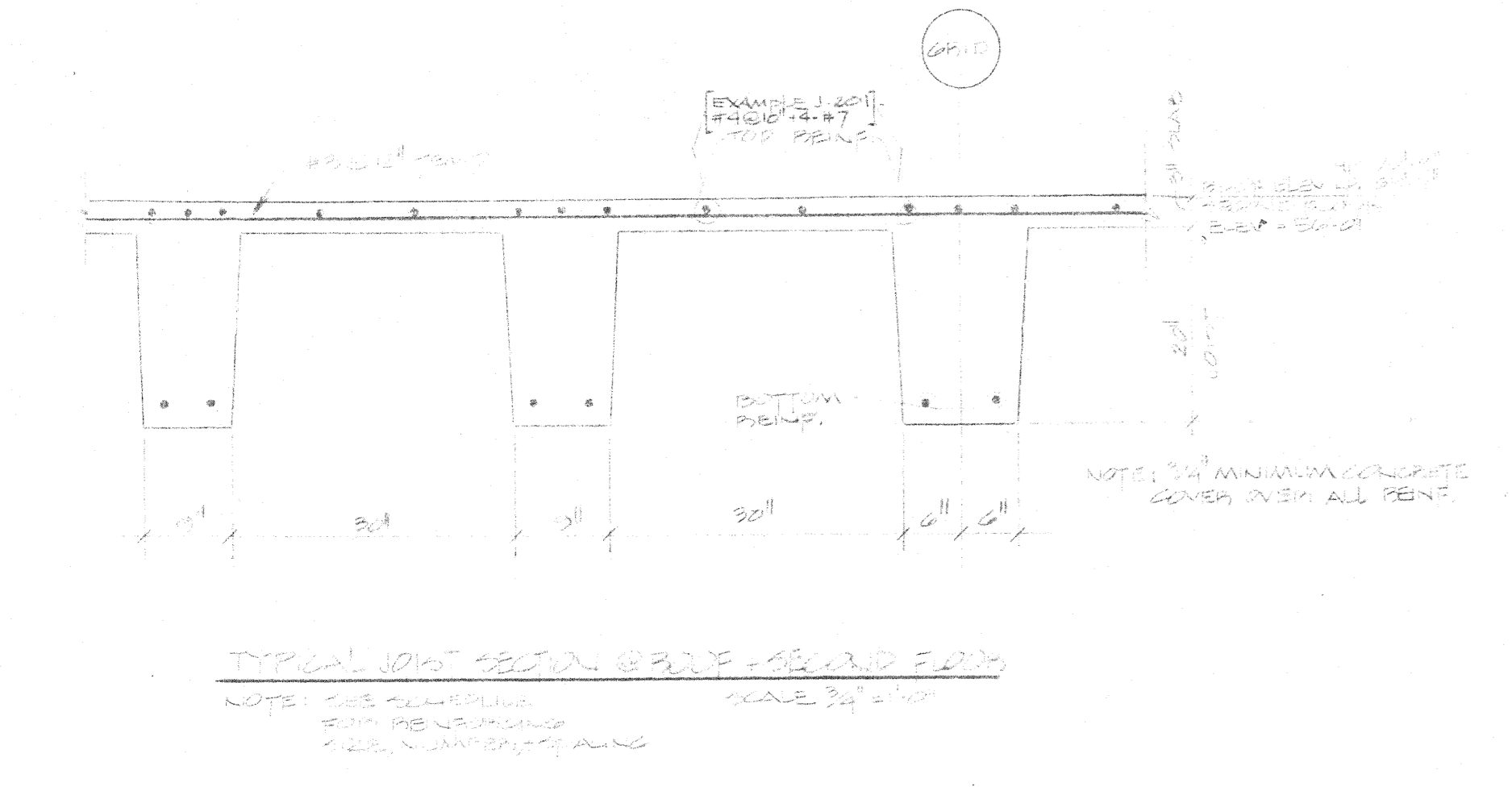
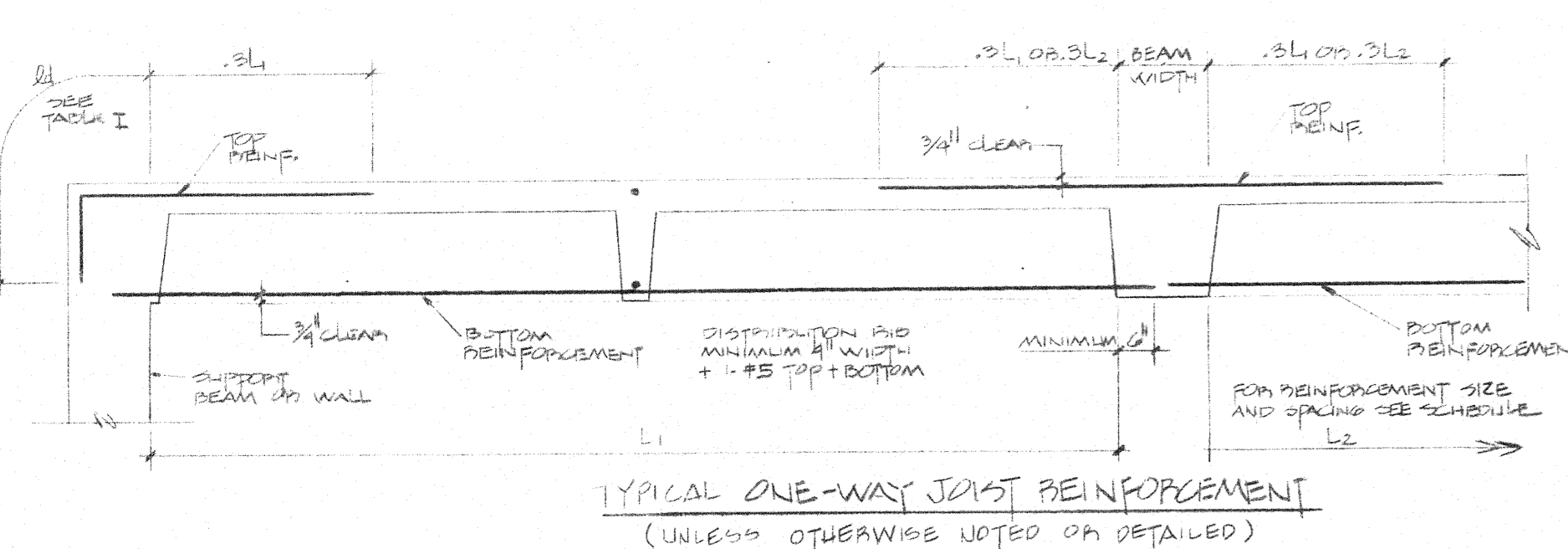
DRAWN: GSK, DPK  
 CHECKED: RFW  
 APPROVED: RFW  
 DATE: APRIL 1, 1991  
 SCALE: 3/4" = 1'-0"  
 PROJECT: 7612 S-7

### JOIST SCHEDULE

MARK	SIZE		REINFORCEMENT		REMARKS
	WIDTH	DEPTH	BOTTOM	TOP	
J-201	9	20-3	4-#7	4-#7	CONTINUOUS OVER ENTIRE LENGTH
J-202	12	20-3	4-#7	4-#7	CONTINUOUS OVER ENTIRE LENGTH
J-203	9	20-3	4-#7	4-#7	CONTINUOUS OVER ENTIRE LENGTH
J-204	12	20-3	4-#7	4-#7	CONTINUOUS OVER ENTIRE LENGTH
J-205	12	20-3	4-#7	4-#7	CONTINUOUS OVER ENTIRE LENGTH
J-206	9	20-3	4-#7	4-#7	CONTINUOUS OVER ENTIRE LENGTH
J-207	9	20-3	4-#7	4-#7	CONTINUOUS OVER ENTIRE LENGTH
J-208	9	20-3	4-#7	4-#7	CONTINUOUS OVER ENTIRE LENGTH
J-209	9	20-3	4-#7	4-#7	CONTINUOUS OVER ENTIRE LENGTH
J-210	12	20-3	4-#7	4-#7	CONTINUOUS OVER ENTIRE LENGTH
J-211	VARIES	20-3	4-#7	4-#7	CONTINUOUS OVER ENTIRE LENGTH
J-212	VARIES	20-3	4-#7	4-#7	CONTINUOUS OVER ENTIRE LENGTH
J-213	9	20-3	4-#7	4-#7	CONTINUOUS OVER ENTIRE LENGTH
J-214	9	20-3	4-#7	4-#7	CONTINUOUS OVER ENTIRE LENGTH
J-215	9	20-3	4-#7	4-#7	CONTINUOUS OVER ENTIRE LENGTH
J-216	5	20-3	4-#7	4-#7	CONTINUOUS OVER ENTIRE LENGTH
J-217	5	20-3	4-#7	4-#7	CONTINUOUS OVER ENTIRE LENGTH
J-218	15 1/2	20-3	4-#7	4-#7	CONTINUOUS OVER ENTIRE LENGTH

### BEAM SCHEDULE

MARK	SIZE		REINFORCEMENT		STIRRUPS		REMARKS
	WIDTH	DEPTH	TOP	BOTTOM	TYPE	SPACING	
B-201	30	23	4-#6	4-#6	#3	16" @ 10" EACH END	TOP BARS EACH END
B-202	30	23	4-#6	4-#6	#3	-00-	TOP BARS EACH END
B-203	30	23	4-#6	4-#6	#3	-00-	TOP BARS EACH END
B-204	30	23	4-#6	4-#6	#3	-00-	TOP BARS EACH END
B-205	30	23	4-#6	4-#6	#3	-00-	TOP BARS EACH END
B-206	40	40	5-#8	4-#8	#3	16" @ 10" EACH END	TOP BARS OVER ENTIRE LENGTH EXTEND TO A MINIMUM OF 12" FROM EACH END OF BEAM
B-207	30	23	4-#6	4-#6	#3	-00-	TOP BARS EACH END
B-208	30	40	5-#8	4-#8	#3	16" @ 10" EACH END	TOP BARS OVER ENTIRE LENGTH EXTEND TO A MINIMUM OF 12" FROM EACH END OF BEAM
B-209	30	40	5-#8	4-#8	#3	16" @ 10" EACH END	TOP BARS OVER ENTIRE LENGTH EXTEND TO A MINIMUM OF 12" FROM EACH END OF BEAM
B-210	30	40	5-#8	4-#8	#3	16" @ 10" EACH END	TOP BARS OVER ENTIRE LENGTH EXTEND TO A MINIMUM OF 12" FROM EACH END OF BEAM
B-211	30	40	5-#8	4-#8	#3	16" @ 10" EACH END	TOP BARS OVER ENTIRE LENGTH EXTEND TO A MINIMUM OF 12" FROM EACH END OF BEAM
B-212	30	23	4-#6	4-#6	#3	-00-	TOP BARS EACH END
B-213	30	23	4-#6	4-#6	#3	-00-	TOP BARS EACH END
B-214	30	23	4-#6	4-#6	#3	-00-	TOP BARS EACH END
B-215	30	45	5-#8	4-#8	#3	16" @ 10" EACH END	TOP BARS OVER ENTIRE LENGTH EXTEND TO A MINIMUM OF 12" FROM EACH END OF BEAM
B-216	8	15	2-#6	2-#6	#3	-00-	TOP BARS EACH END
B-217	12	23	2-#6	2-#6	#3	-00-	TOP BARS EACH END
B-218	17	23	3-#7	4-#8	#3	-00-	TOP BARS EACH END
B-219	30	23	4-#6	4-#6	#3	-00-	TOP BARS EACH END
B-220	30	23	4-#6	4-#6	#3	-00-	TOP BARS EACH END
B-221	29	23	4-#7	3-#7	#3	-00-	TOP BARS EACH END
B-222	24	23	4-#8	3-#8	#3	-00-	TOP BARS EACH END
B-223	27	23	4-#8	5-#8	#3	-00-	TOP BARS EACH END
B-224	21 1/2	23	3-#7	3-#7	#3	-00-	TOP BARS EACH END
B-225	21 1/2	23	3-#8	3-#8	#3	-00-	TOP BARS EACH END
B-226	30	23	4-#6	4-#6	#3	-00-	TOP BARS EACH END
B-227	30	23	4-#6	7-#8	#3	-00-	TOP BARS EACH END
B-228	30	23	4-#8	3-#8	#3	-00-	TOP BARS EACH END
B-229	VARIES	23	2-#7	2-#7	#3	-00-	TOP BARS EACH END
B-230	11 1/2	23	3-#8	3-#7	#3	-00-	TOP BARS EACH END
B-231	10	45	3-#8	3-#8	#3	-00-	TOP BARS EACH END
B-232	30	23	4-#6	3-#7	#3	-00-	TOP BARS EACH END
B-233	30	23	4-#6	4-#6	#3	-00-	TOP BARS EACH END
B-234	30	23	4-#6	4-#6	#3	-00-	TOP BARS EACH END
B-235	30	23	4-#6	4-#6	#3	-00-	TOP BARS EACH END
B-236	30	23	4-#6	4-#6	#3	-00-	TOP BARS EACH END
B-237	30	23	4-#6	4-#6	#3	-00-	TOP BARS EACH END
B-238	30	23	4-#6	4-#6	#3	-00-	TOP BARS EACH END
B-239	30	23	4-#6	4-#6	#3	-00-	TOP BARS EACH END
B-240	30	23	4-#6	4-#6	#3	-00-	TOP BARS EACH END
B-241	30	23	4-#6	4-#6	#3	-00-	TOP BARS EACH END
B-242	42	23	5-#7	5-#7	#3	-00-	TOP BARS EACH END
B-243	42	23	5-#7	5-#7	#3	-00-	TOP BARS EACH END
B-244	42	23	5-#7	5-#7	#3	-00-	TOP BARS EACH END
B-245	12	23	2-#6	2-#7	#3	-00-	TOP BARS EACH END
B-246	12	23	4-#8	2-#7	#3	-00-	TOP BARS EACH END
B-247	12	23	4-#8	2-#7	#3	-00-	TOP BARS EACH END
B-248	12	23	4-#8	2-#7	#3	-00-	TOP BARS EACH END
B-249	12	23	4-#8	2-#7	#3	-00-	TOP BARS EACH END
B-250	12	23	4-#8	2-#7	#3	-00-	TOP BARS EACH END
B-251	12	23	4-#8	2-#7	#3	-00-	TOP BARS EACH END
B-252	12	23	4-#8	2-#7	#3	-00-	TOP BARS EACH END
B-253	12	23	4-#8	2-#7	#3	-00-	TOP BARS EACH END
B-254	12	23	4-#8	2-#7	#3	-00-	TOP BARS EACH END
B-255	12	23	4-#8	2-#7	#3	-00-	TOP BARS EACH END



Gunnar Birkerts and Associates Architects

200 Hayes Street, Birmingham, Michigan

Robert M. Darvas & Associates  
STRUCTURAL ENGINEERS  
ANN ARBOR, MICHIGAN

Hoyem-Basso Associates Incorporated  
MECHANICAL & ELECTRICAL ENGINEERS  
BLOOMFIELD HILLS, MICHIGAN

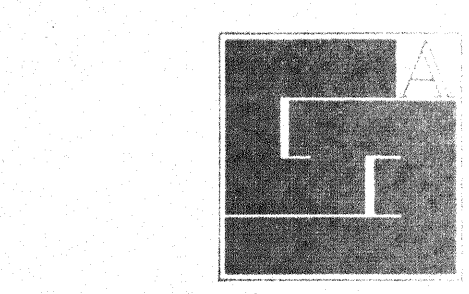
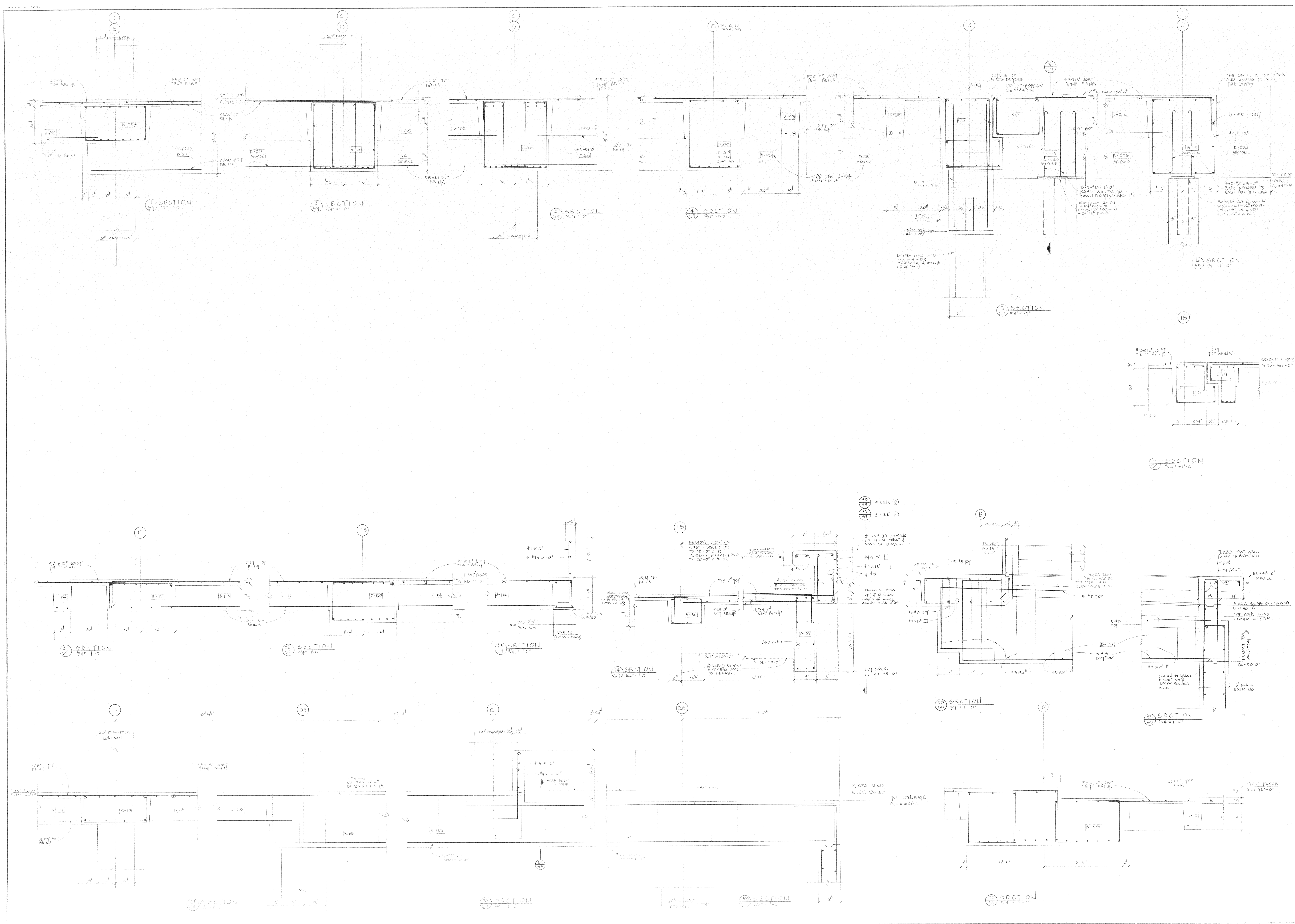
Duluth Public Library  
DULUTH, MINNESOTA

SECOND FLOOR AND ROOF LEVEL SCHEDULES AND DETAILS

REVISIONS		
ITEM	DATE	BY

DRAWN: E.A. BPP  
CHECKED: R.M. DARVAS  
APPROVED: R.M. DARVAS  
DATE: APRIL 3, 1970  
SCALE: AS SHOWN  
PROJECT: 7612 S-8





**Gunnar Birkerts and Associates Architects**

232 Harmon Street Birmingham Michigan

**Robert M. Darvas & Associates**  
STRUCTURAL ENGINEERS  
ANN ARBOR, MICHIGAN

**Hoyem-Basso Associates Incorporated**  
MECHANICAL & ELECTRICAL ENGINEERS  
BLOOMFIELD HILLS, MICHIGAN

**Duluth Public Library**  
DULUTH, MINNESOTA

FIRST AND SECOND FLOOR VERTICAL CURTAIN WALLS

EDA LPW 01-21-02760

REVISIONS		
ITEM	DATE	BY

DRAWN: DPK, SJA  
CHECKED: KJW  
APPROVED: RMD  
APPROVED FOR CONSTRUCTION

DATE: APRIL 1, 1971  
SCALE: 3/4" = 1'-0"

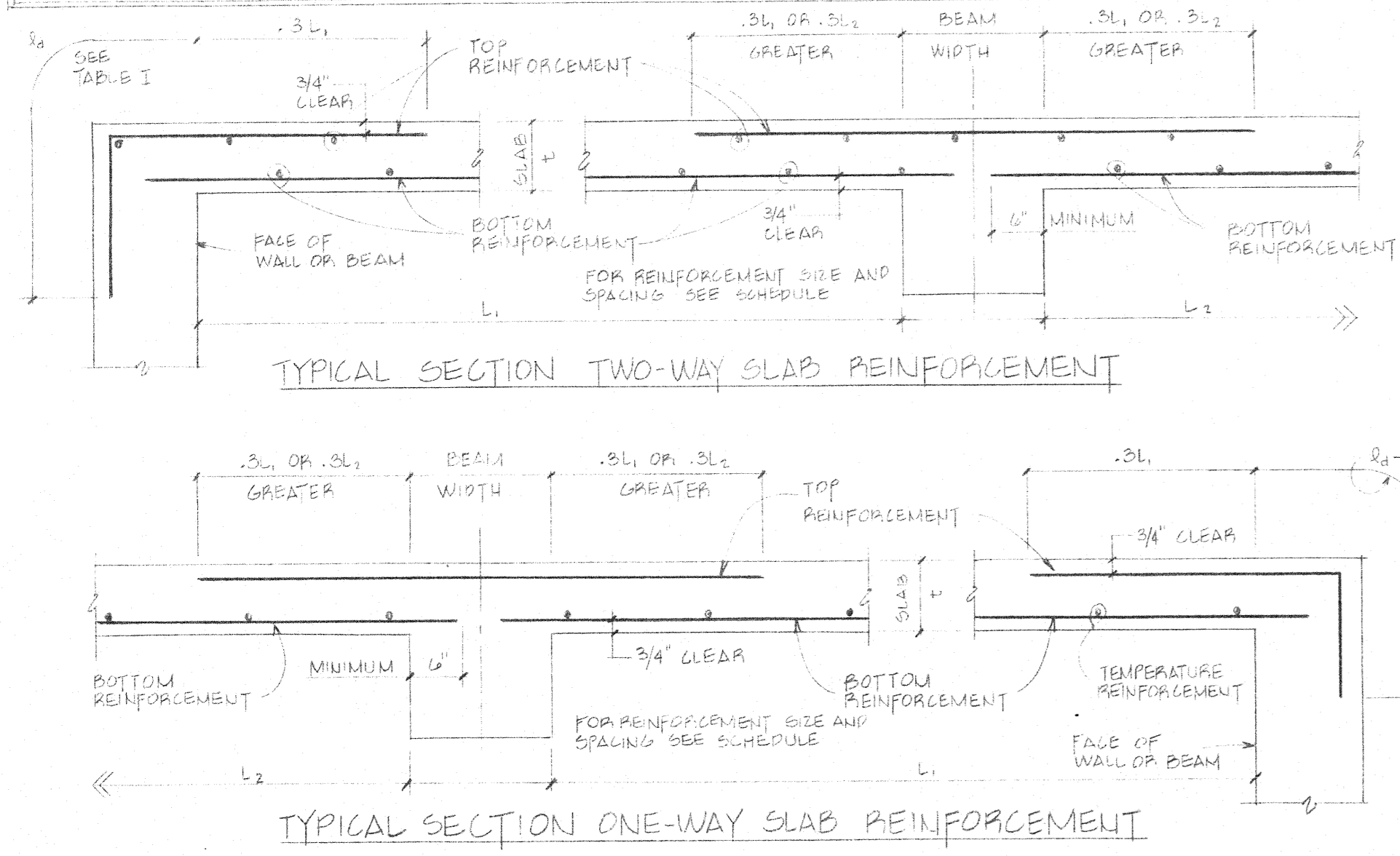
PROJECT: 7612 S-9

### SLAB SCHEDULE

MARK	THICKNESS	REINFORCEMENT						REMARKS
		BOTTOM		TOP				
		N-S	E-W	N	S	E	W	
S-301	4"	#3@8"	#3@8"	#3@8"	#3@8"	#3@8"	#3@8"	TOP BARS NORTH END EXTEND INTO S-302.
S-302	4"	#3@8"	#3@8"	---	---	#3@8"	#3@8"	
S-303	4"	#3@8"	#3@8"	#3@8"	#3@8"	#3@8"	#3@8"	TOP BARS SOUTH END EXTEND INTO S-302.
S-304	4"	#3@8"	#3@8"	---	---	#3@8"	#3@8"	
S-201	5"	#3@8"	#3@8"	#3@8"	#3@8"	#3@8"	#3@8"	
S-202	5"	#3@8"	#3@8"	#3@8"	#3@8"	#3@8"	#3@8"	
S-203	6"	#4@10"	#4@10"	#4@10"	#4@10"	#4@10"	#4@10"	
S-101	5"	#3@8"	#3@8"	#3@8"	#3@8"	#3@8"	#3@8"	
S-102	5"	#3@8"	#3@8"	#3@8"	#3@8"	#3@8"	#3@8"	
S-103	6"	#4@10"	#4@10"	#4@10"	#4@10"	#4@10"	#4@10"	
S-104	6"	#4@10"	#4@10"	---	---	#4@10"	#4@10"	
S-01	5"	#3@8"	#3@8"	#3@8"	#3@8"	#3@8"	#3@8"	

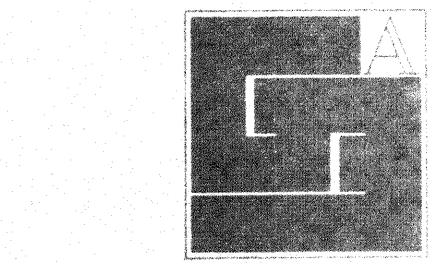
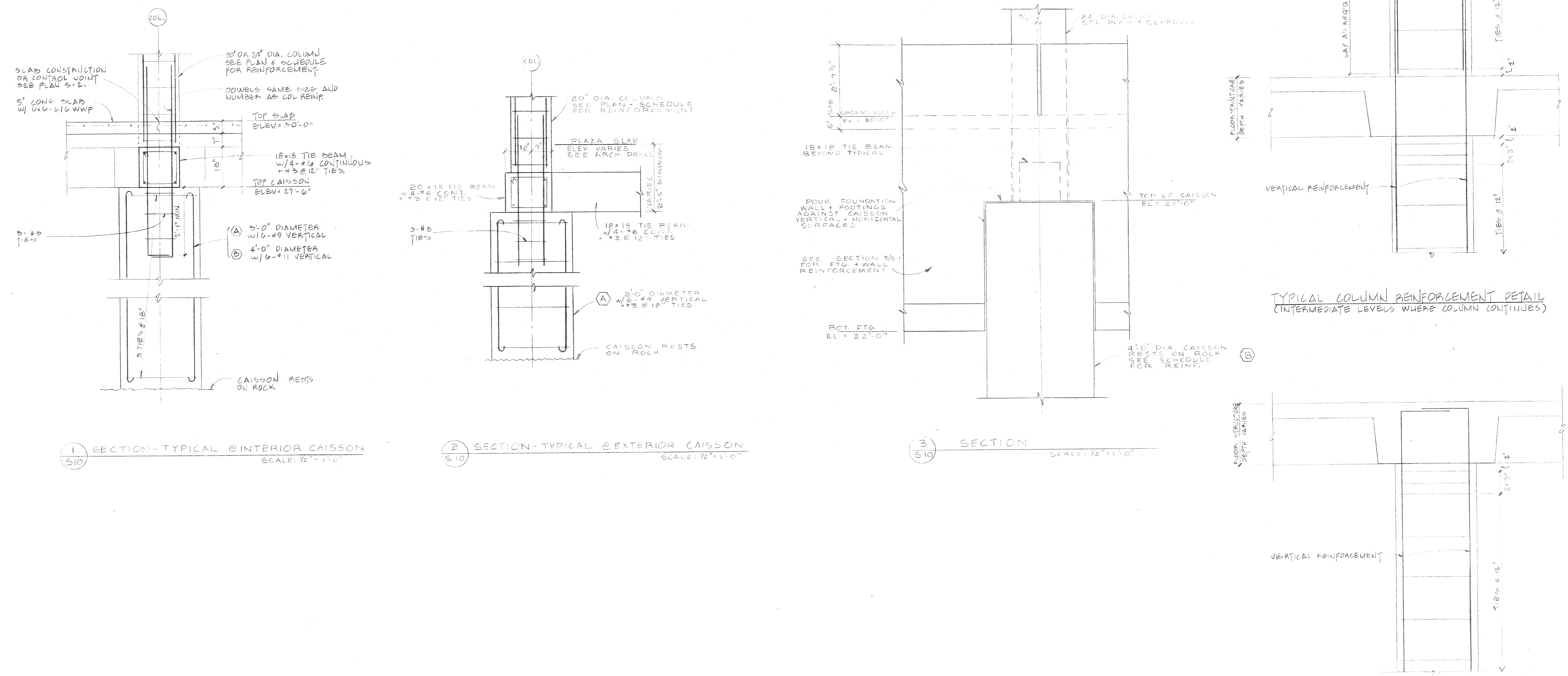
### COLUMN SCHEDULE

	S-2	B-3 thru B-7	B-8 thru B-11	B-12 thru B-15	C-1	C-2 thru C-6	C-7	C-8 thru C-10	C-11 thru C-13	C-14	D-1	D-2	D-3 thru D-7	D-8, D-10	D-9, D-11	D-12, D-13	E-1	E-2	
ROOF LEVEL ELEV. 11'-0"																			
SECOND FLOOR ELEV. 5'-0"	12" x 12" 4" x 5" VERTICAL #3@12" TIES	20" DIAMETER 6" x 9" VERTICAL #3@12" TIES	20" DIAMETER 6" x 9" VERTICAL #3@12" TIES	20" DIAMETER 6" x 9" VERTICAL #3@12" TIES	12" x 12" 4" x 5" VERTICAL #3@12" TIES	20" DIAMETER 6" x 7" VERTICAL #3@12" TIES	20" DIAMETER 6" x 7" VERTICAL #3@12" TIES	20" DIAMETER 6" x 7" VERTICAL #3@12" TIES	20" DIAMETER 6" x 7" VERTICAL #3@12" TIES	20" DIAMETER 6" x 7" VERTICAL #3@12" TIES	24" DIAMETER 6" x 11" VERTICAL #3@12" TIES	12" x 12" 4" x 5" VERTICAL #3@12" TIES	20" DIAMETER 6" x 7" VERTICAL #3@12" TIES	20" DIAMETER 6" x 7" VERTICAL #3@12" TIES	20" DIAMETER 6" x 7" VERTICAL #3@12" TIES	20" DIAMETER 6" x 7" VERTICAL #3@12" TIES	12" x 12" 4" x 5" VERTICAL #3@12" TIES		
FIRST FLOOR ELEV. 42'-0"	12" x 12" 4" x 5" VERTICAL #3@12" TIES	20" DIAMETER 6" x 9" VERTICAL #3@12" TIES	20" DIAMETER 6" x 9" VERTICAL #3@12" TIES	20" DIAMETER 6" x 9" VERTICAL #3@12" TIES	12" x 12" 4" x 5" VERTICAL #3@12" TIES	20" DIAMETER 6" x 7" VERTICAL #3@12" TIES	20" DIAMETER 6" x 7" VERTICAL #3@12" TIES	20" DIAMETER 6" x 7" VERTICAL #3@12" TIES	20" DIAMETER 6" x 7" VERTICAL #3@12" TIES	20" DIAMETER 6" x 7" VERTICAL #3@12" TIES	24" DIAMETER 6" x 11" VERTICAL #3@12" TIES	12" x 12" 4" x 5" VERTICAL #3@12" TIES	20" DIAMETER 6" x 7" VERTICAL #3@12" TIES	20" DIAMETER 6" x 7" VERTICAL #3@12" TIES	20" DIAMETER 6" x 7" VERTICAL #3@12" TIES	20" DIAMETER 6" x 7" VERTICAL #3@12" TIES	12" x 12" 4" x 5" VERTICAL #3@12" TIES		
GROUND FLOOR ELEV. 30'-0"	12" WALL 4" x 5" VERTICAL #3@12" TIES	20" DIAMETER 6" x 9" VERTICAL #3@12" TIES	CAISSON (A)	CAISSON (A)	12" x 12" 4" x 5" VERTICAL #3@12" TIES	20" DIAMETER 6" x 7" VERTICAL #3@12" TIES	20" x 20" 4" x 5" VERTICAL #3@12" TIES	CAISSON (A)		CAISSON (E)	24" x 24" 4" x 11" VERTICAL #3@12" TIES	CAISSON (A)		CAISSON (E)	CAISSON (A)	CAISSON (E)	CAISSON (A)	12" x 12" 4" x 5" VERTICAL #3@12" TIES	
BASEMENT ELEV. 10'-0"																			
FOUNDATION (SEE SCHEDULE)	FOOTING (D)	FOOTING (C)			FOOTING (C)	FOOTING (C)	FOOTING (C)			FOOTING (C)									FOOTING (E)



REIN. NUMBER	REIN. TYPE	TOP REIN. (SEE NOTE)
3	10"	12"
4	12"	12"
5	14"	14"
6	16"	16"
7	18"	18"
8	20"	20"
9	22"	22"
10	24"	24"
11	28"	28"

NOTE: TOP REIN. IS W/2 REIN. IN SLAB & BARS WITH DEPTH GREATER THAN 12" USE 5/8" REIN. & FOR ALL OTHER CASES.



**Gunnar Birkerts and Associates Architects**

252 Harmon Street Birmingham Michigan

**Robert M. Darvas & Associates**  
STRUCTURAL ENGINEERS  
ANN ARBOR, MICHIGAN

**Hoyem-Basso Associates Incorporated**  
MECHANICAL & ELECTRICAL ENGINEERS  
BLOOMFIELD HILLS, MICHIGAN

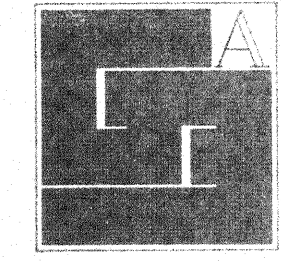
**Duluth Public Library**  
DULUTH, MINNESOTA

COLUMN AND SLAB SCHEDULES AND DETAILS

EDA: PW 92-51-32788

ITEM	DATE	BY

DRAWN: PAK, 9/04  
CHECKED: KJW  
APPROVED: RMD  
APPROVER FOR OWNER:  
DATE: APRIL 7, 1971  
SCALE: AS SHOWN  
PROJECT:



Gunnar Birkerts  
and  
Associates  
Architects

161 644 0014  
232 Harmon Street Birmingham Michigan

Robert M. Darvas  
&  
Associates  
STRUCTURAL ENGINEERS  
ANN ARBOR, MICHIGAN  
Hoyem-Basso  
Associates  
Incorporated  
MECHANICAL & ELECTRICAL  
ENGINEERS  
BLOOMFIELD HILLS, MICHIGAN

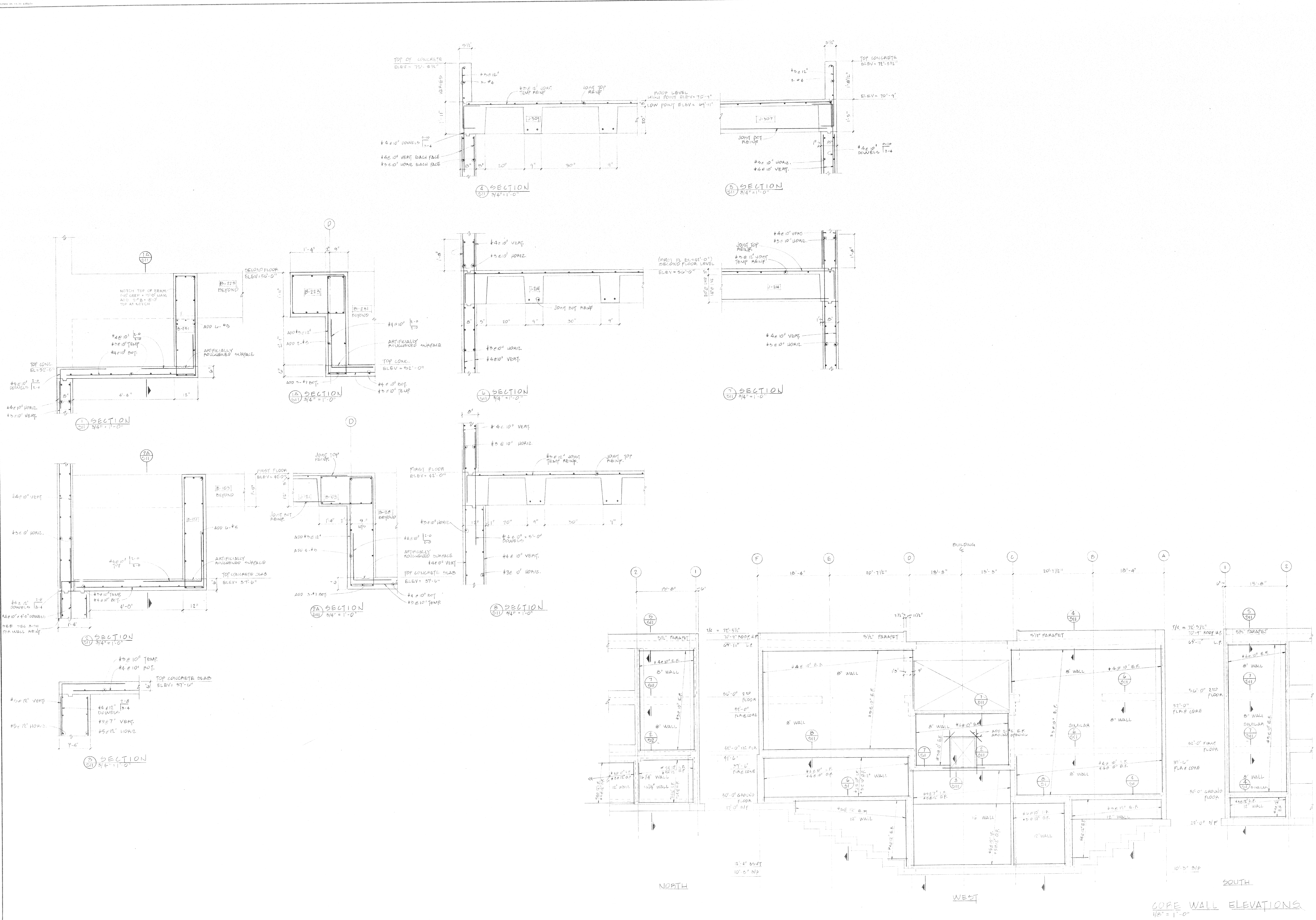
Duluth  
Public  
Library  
DULUTH, MINNESOTA

COPE DETAILS

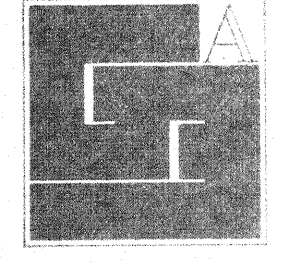
DDA 17W 76-51-02786

REVISION	DATE	BY

DRAWN: DRK  
CHECKED: MDM  
APPROVED: GMB  
APPROVED FOR CONSTRUCTION: [Signature]  
DATE: APR 1 1977  
SCALE: AS SHOWN  
PROJECT:



COPE WALL ELEVATIONS  
1/8" = 1'-0"



Gunnar Birkerts  
and  
Associates  
Architects

Tel: 616-969-1100  
202 Harmon Street, Birmingham, Michigan

Robert M. Darvas  
&  
Associates  
STRUCTURAL ENGINEERS  
ANN ARBOR, MICHIGAN

Hoyem-Basso  
Associates  
Incorporated  
MECHANICAL & ELECTRICAL  
ENGINEERS  
BLOOMFIELD HILLS, MICHIGAN

Duluth  
Public  
Library  
DULUTH, MINNESOTA

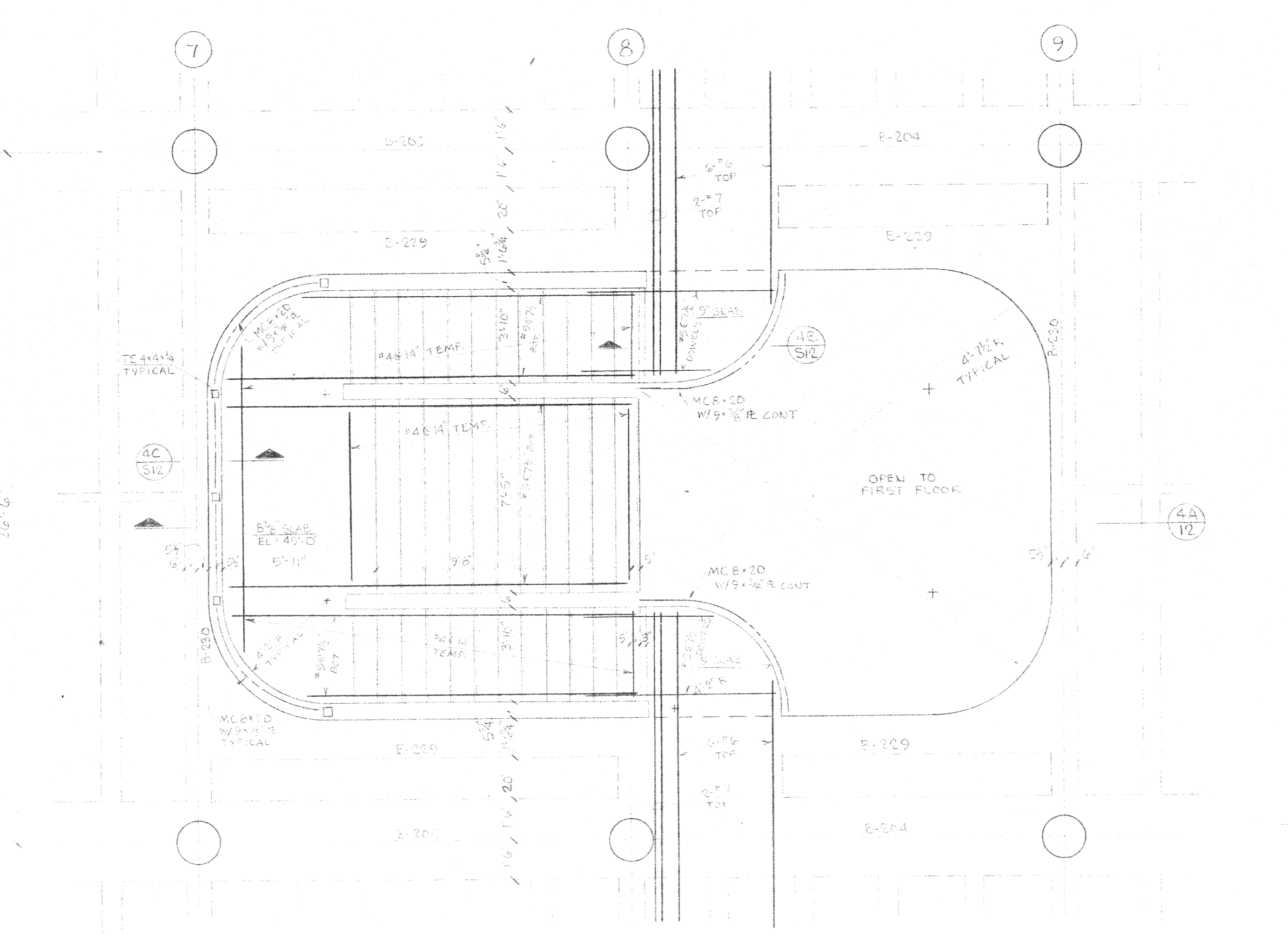
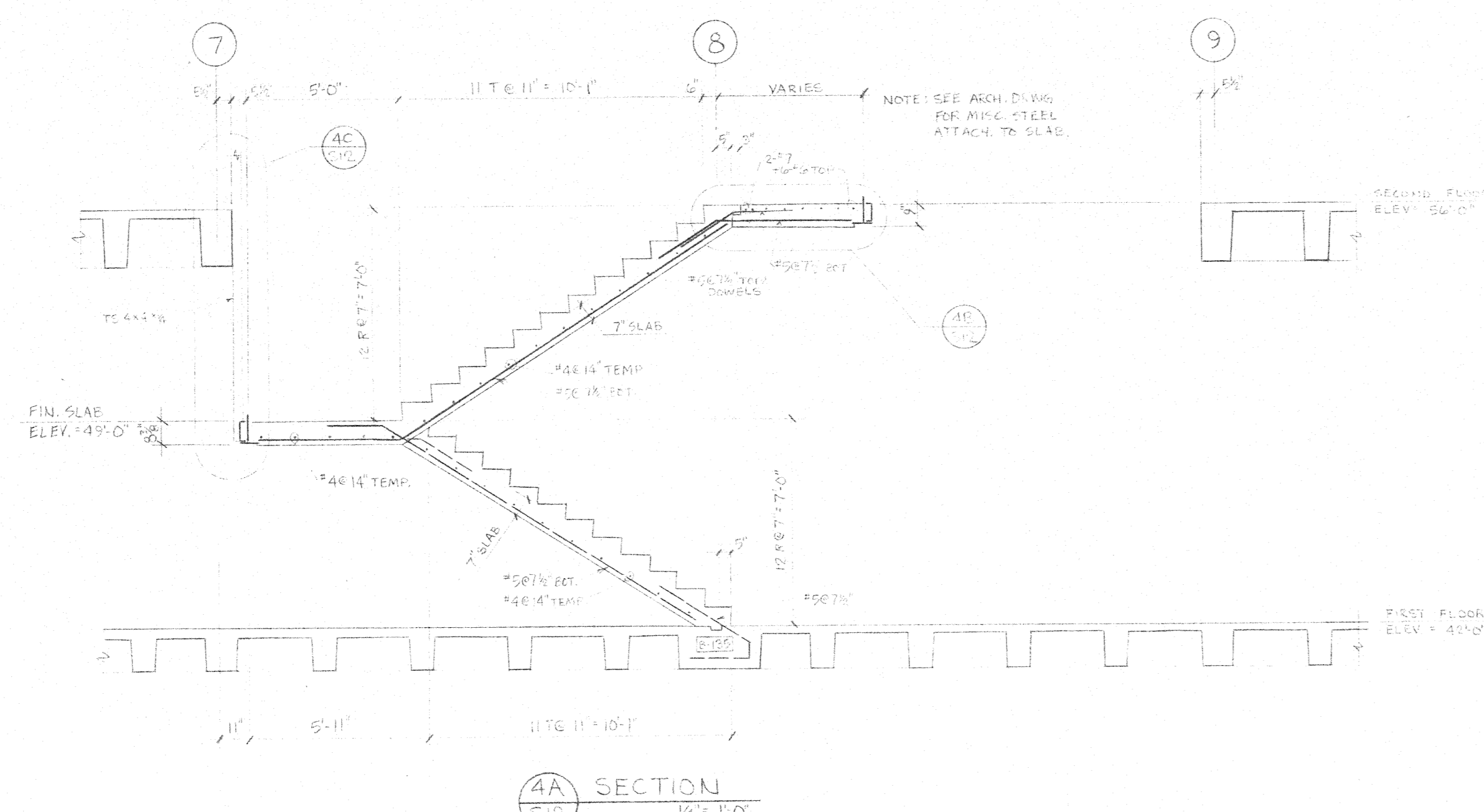
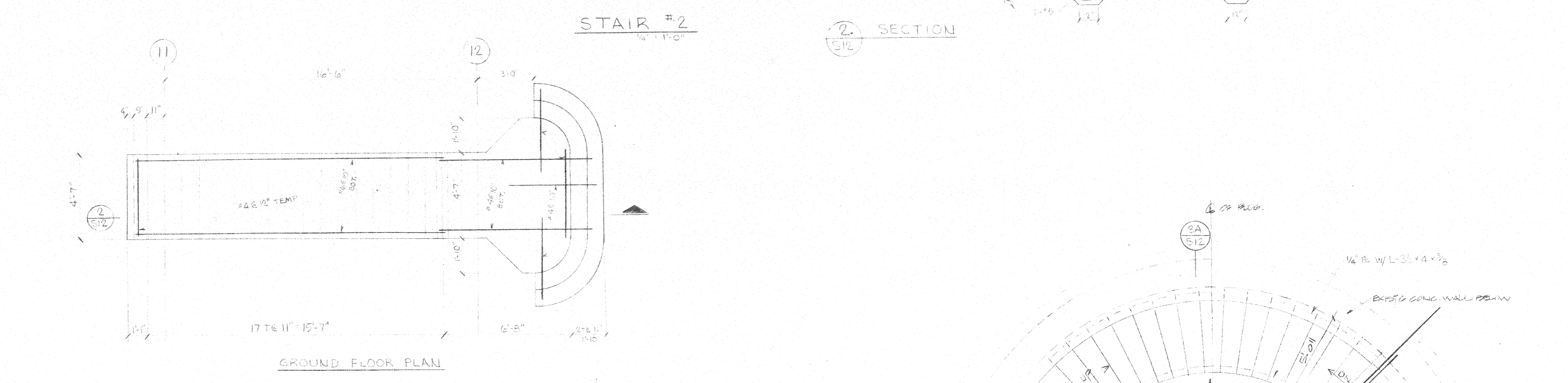
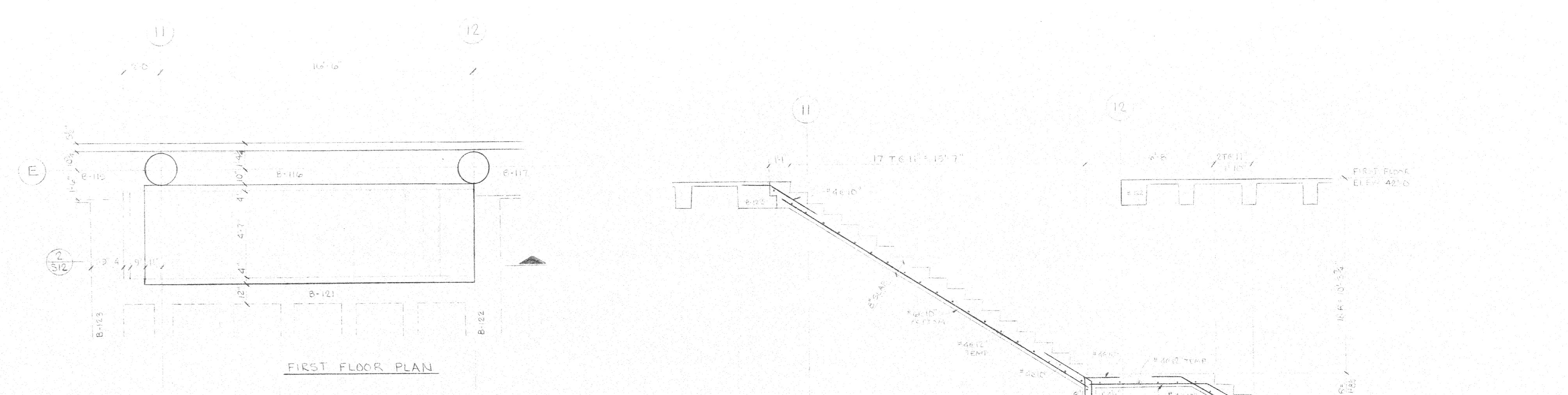
STAIR #2  
PLAN & DETAILS

FDN 17W 00-01-02780

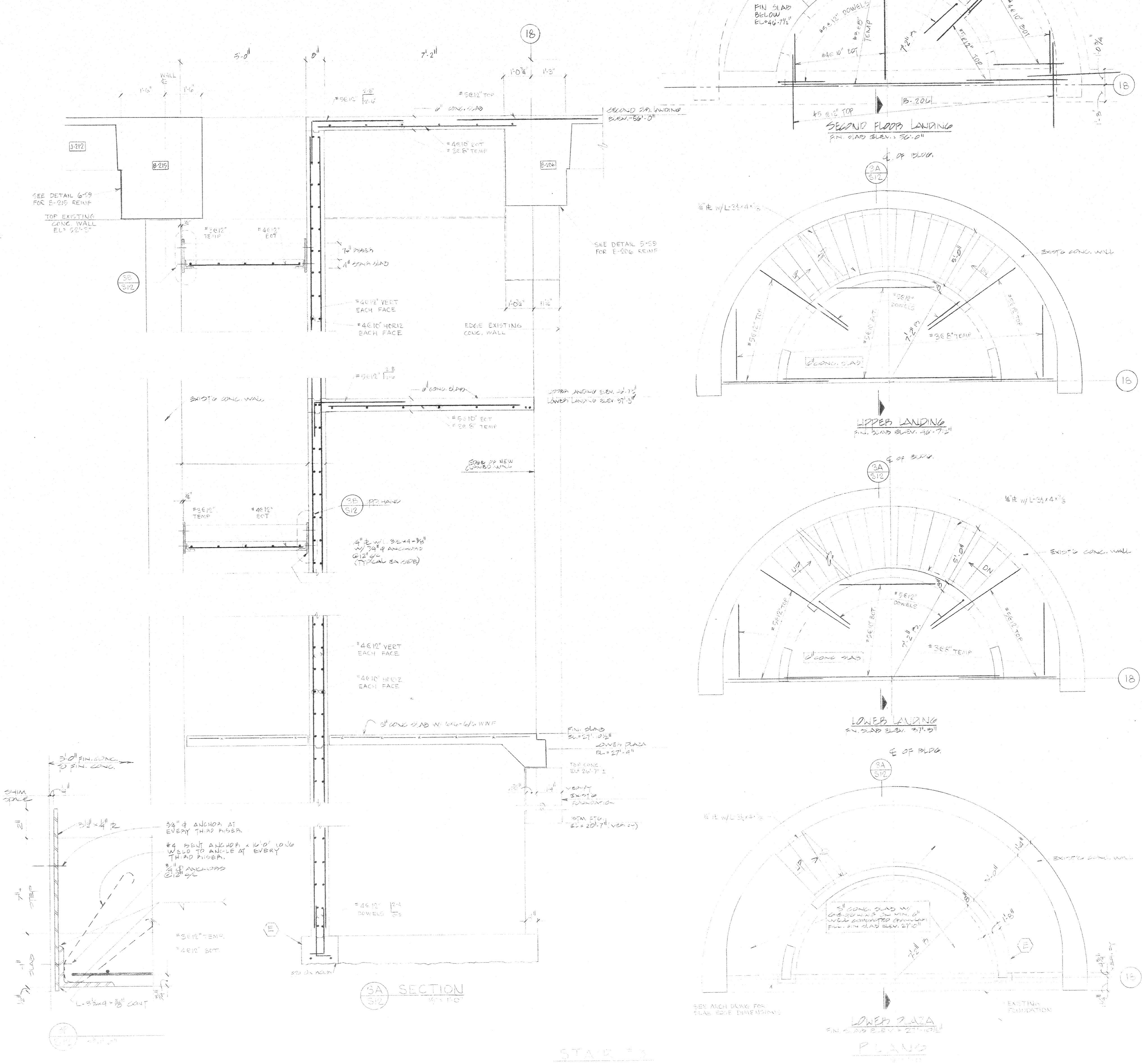
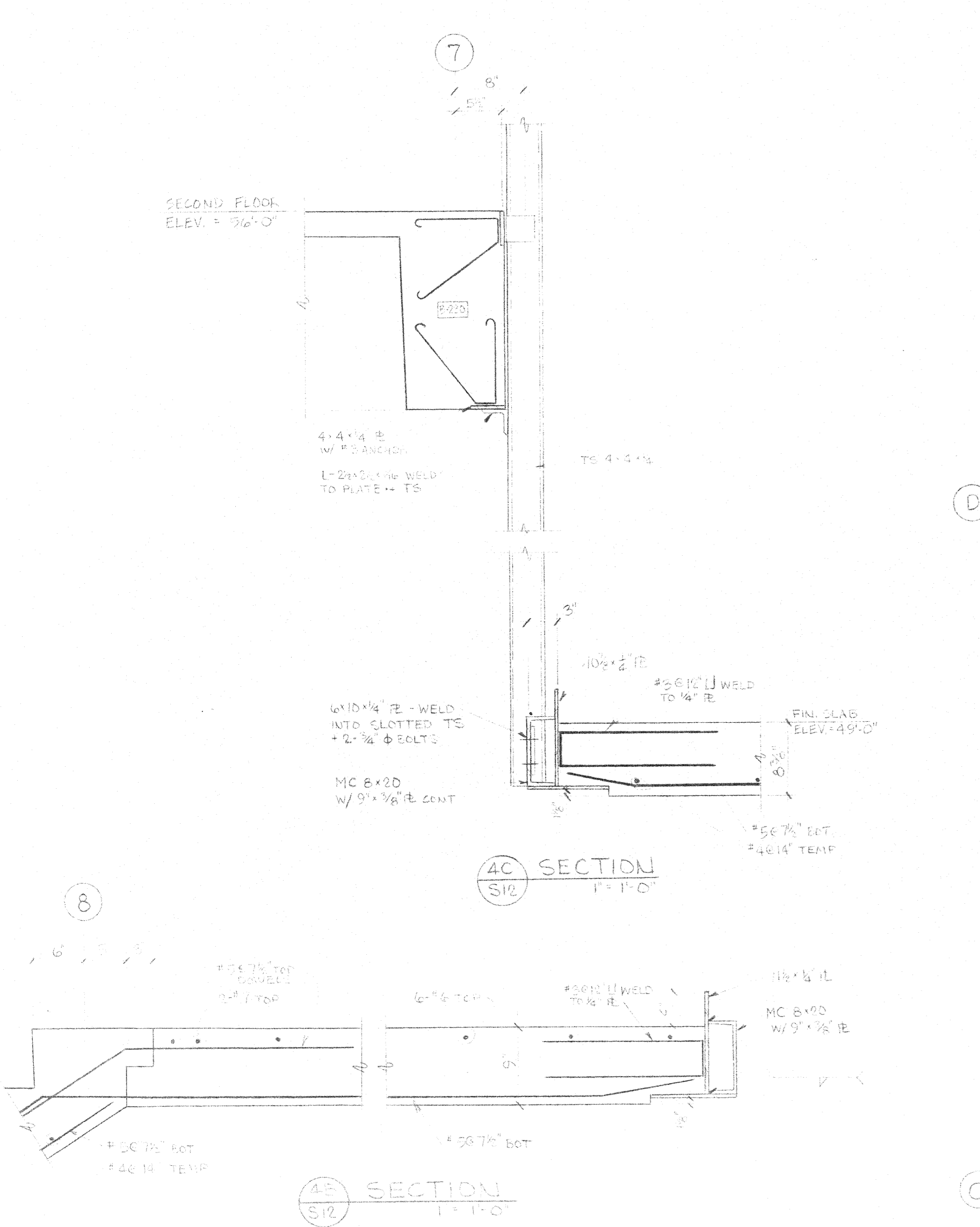
REVISIONS		
ITEM	DATE	BY

DRAWN: EJA, DRA  
CHECKED: KJM  
APPROVED: [Signature]  
DATE: APRIL 7, 1971  
SCALE: AS SHOWN  
PROJECT:

7612 S-12



STAIR #4



STAIR #1

