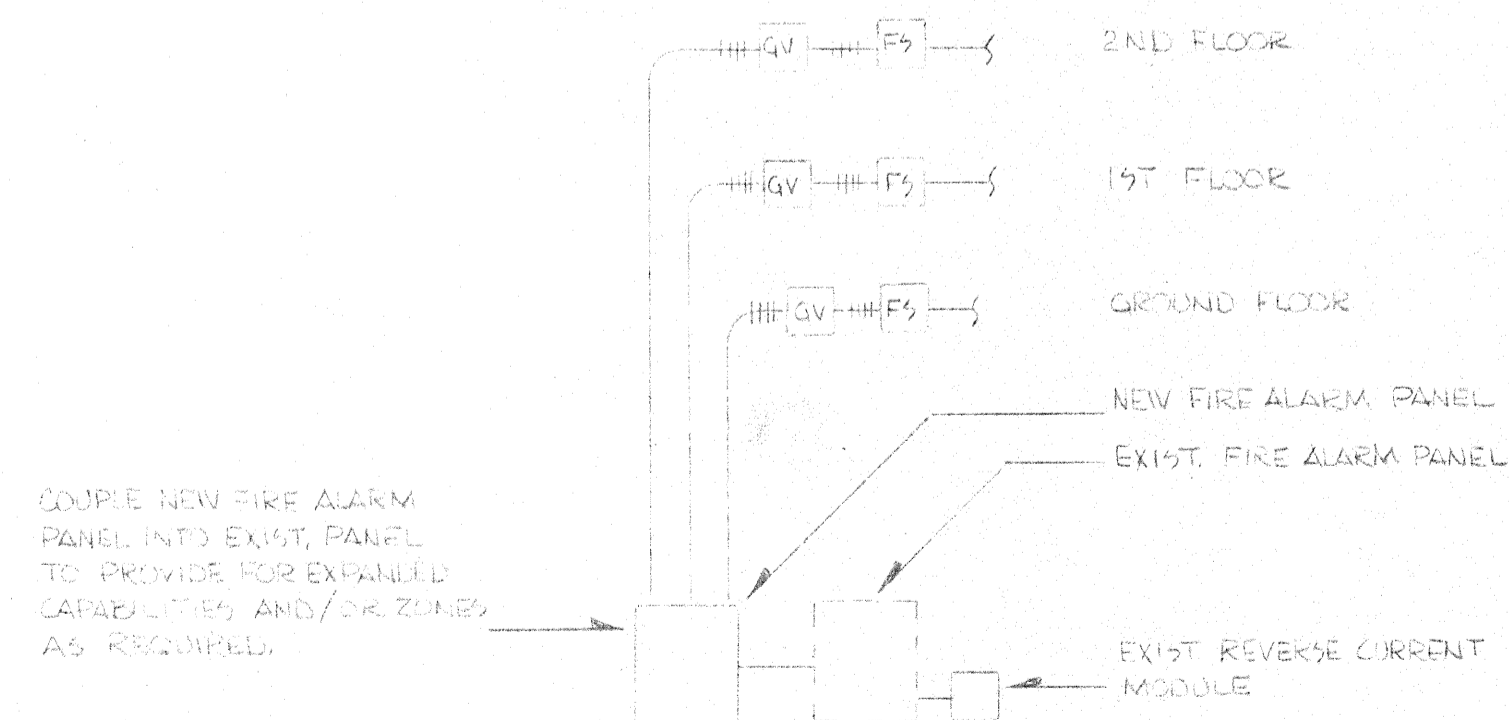
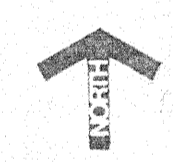


GROUND FLOOR PLAN
SCALE: 1/8" = 1'-0"



FIRE ALARM RISER
NO SCALE

These drawings do not include necessary components for construction safety.

I hereby certify that this plan, specification, or report was prepared by me or under my direct supervision and that I am a duly Registered _____ under the laws of the State of _____
Date _____ Reg. No. _____

DULUTH PUBLIC LIBRARY

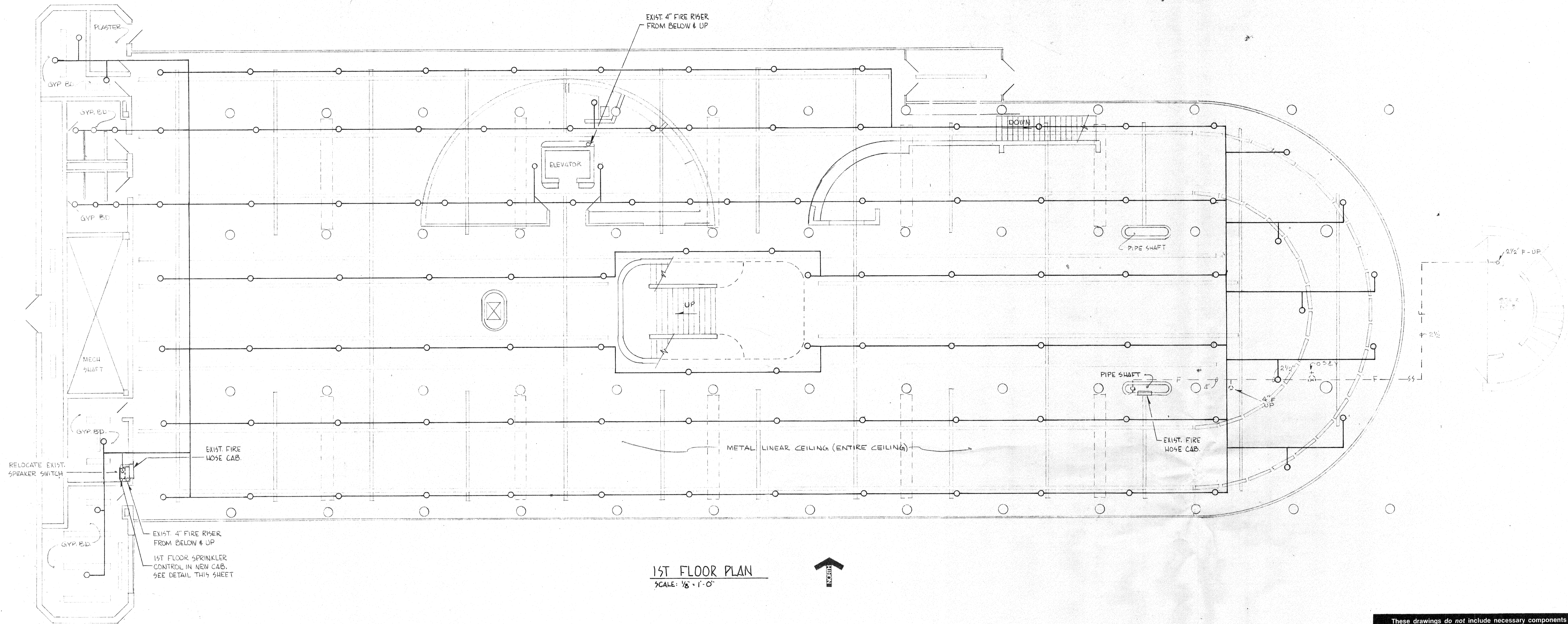
SPRINKLER SYSTEM

TSP Duluth

TSP One, Inc.
310 Board of Trade Building
Duluth, MN 55802
(218) 722-8892

Project No. 50686
Drawn By MFJ
Checked By ERW
Date 4-1-86
Copyright ©

M-1
SHEET 1 OF 4



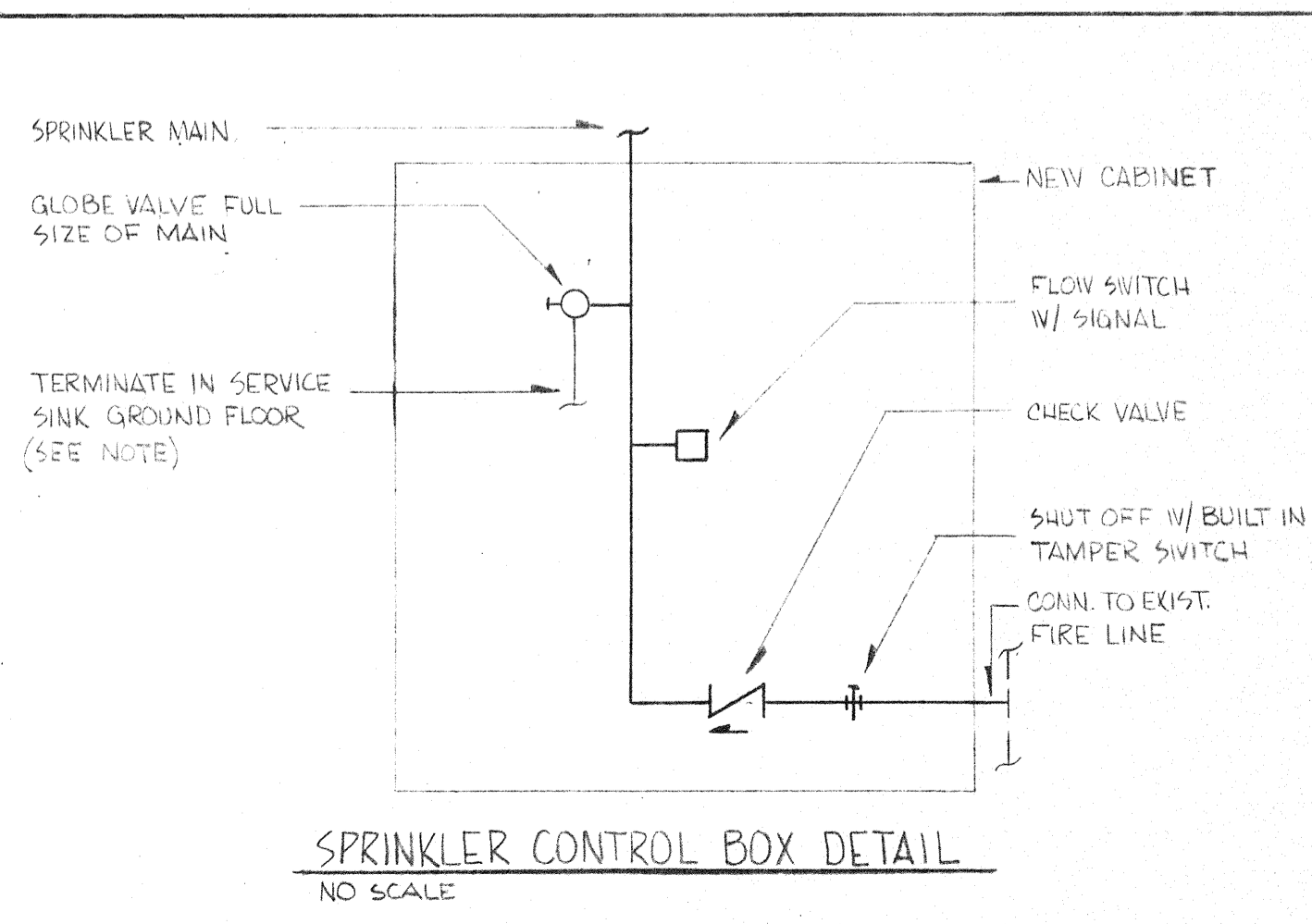
1ST FLOOR PLAN
SCALE: 1/8" = 1'-0"



NOTE
GROUND FLOOR - DRAIN TO GO OVERHEAD TO SERVICE SINK. PROVIDE CAPPED NIPPLE AT LOW POINT.

GENERAL NOTES

- 1) All areas designed for light hazard, unless otherwise noted.
- 2) Provide all spare sprinkler heads, wrenches, etc., in plainly marked cabinet as required by NFPA 13.
- 3) Wire all flow alarm shut off valve tamper switches to fire alarm system panel verifying they are open.
- 4) Contractor shall verify, before installation, location of risers, sprinkler mains, and sprinkler branches for space conformance.
- 5) Sprinkler head location may vary slightly if they maintain proper coverage set forth by NFPA 13. Major routing changes must be approved by Engineer.
- 6) Contractor shall provide auxiliary drains as required by NFPA 13 at locations where water will be trapped in sections of pipe. Quantity and location of drains will depend on final installation.
- 7) Contractor shall verify if any conflicts occur between sprinker head location and light fixtures, speakers, grilles, etc. Adjustments shall maintain symmetry within the space affected.
- 8) Coordinate shut down with fire department.
- 9) When going through walls, chases, etc., drill minimum size holes. If more cutting is required, contractor to be responsible for all patching and painting.
- 10) Sprinkler contractor to do all patching and painting of walls and ceilings, if necessary, to be partially removed for sprinker installation.



These drawings do not include necessary components for construction safety.
I hereby certify that this plan, specification, or report was prepared by me or under my direct supervision and that I am a duly Registered _____ under the laws of the State of _____
Date _____ Reg. No. _____

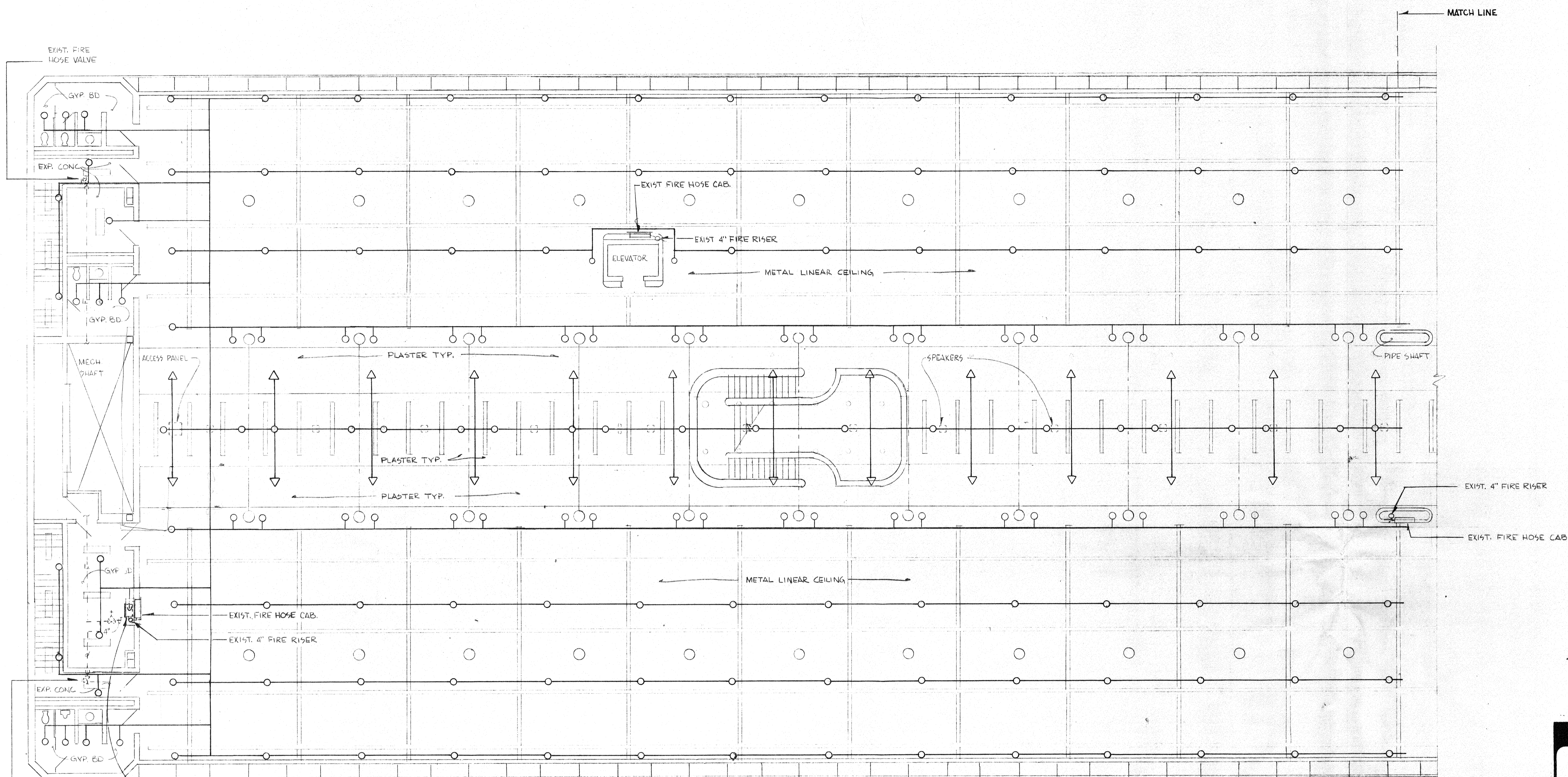
DULUTH PUBLIC LIBRARY

SPRINKLER SYSTEM

TSP Duluth
TSP One, Inc.
310 Board of Trade Building
Duluth, MN 55802
(218) 722-6892

Project No. 50686
Drawn By MEZ
Checked By ERW
Date 4-1-86
Copyright © _____

M-2
SHEET 2 OF 4



2ND FLOOR PLAN
SCALE: 1/8" = 1'-0"



These drawings do not include necessary components for construction safety.

I hereby certify that this plan, specification, or report was prepared by me or under my direct supervision and that I am a duly Registered Professional Engineer under the laws of the State of Minnesota.
Date: _____ Reg. No.: _____

DULUTH PUBLIC LIBRARY

SPRINKLER SYSTEM

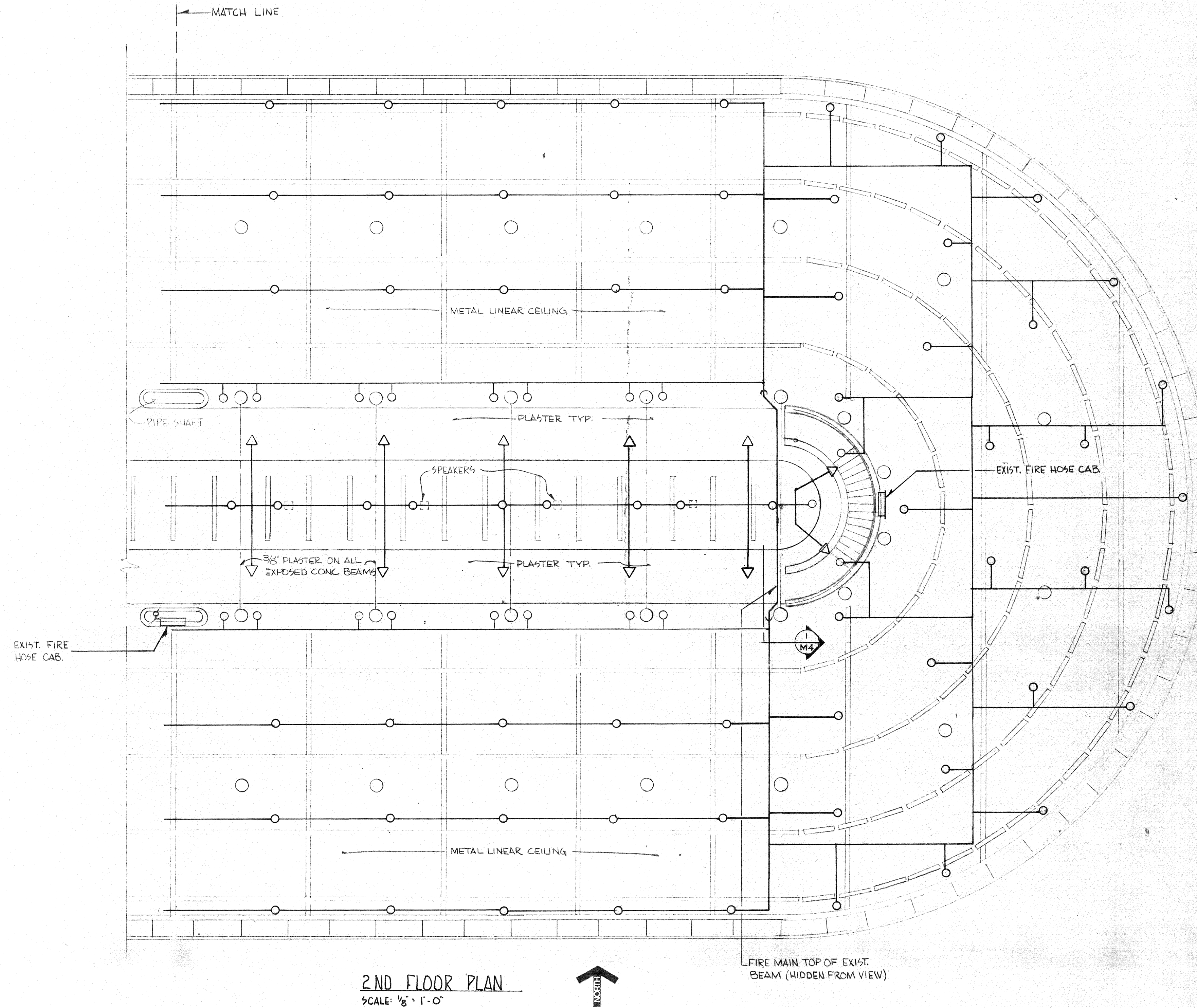
TSP Duluth

TSP One, Inc.
310 Board of Trade Building
Duluth, MN 55802
(218) 722-6892

Project No. 50686
Drawn By MEJ
Checked By ERW
Date 4-1-86

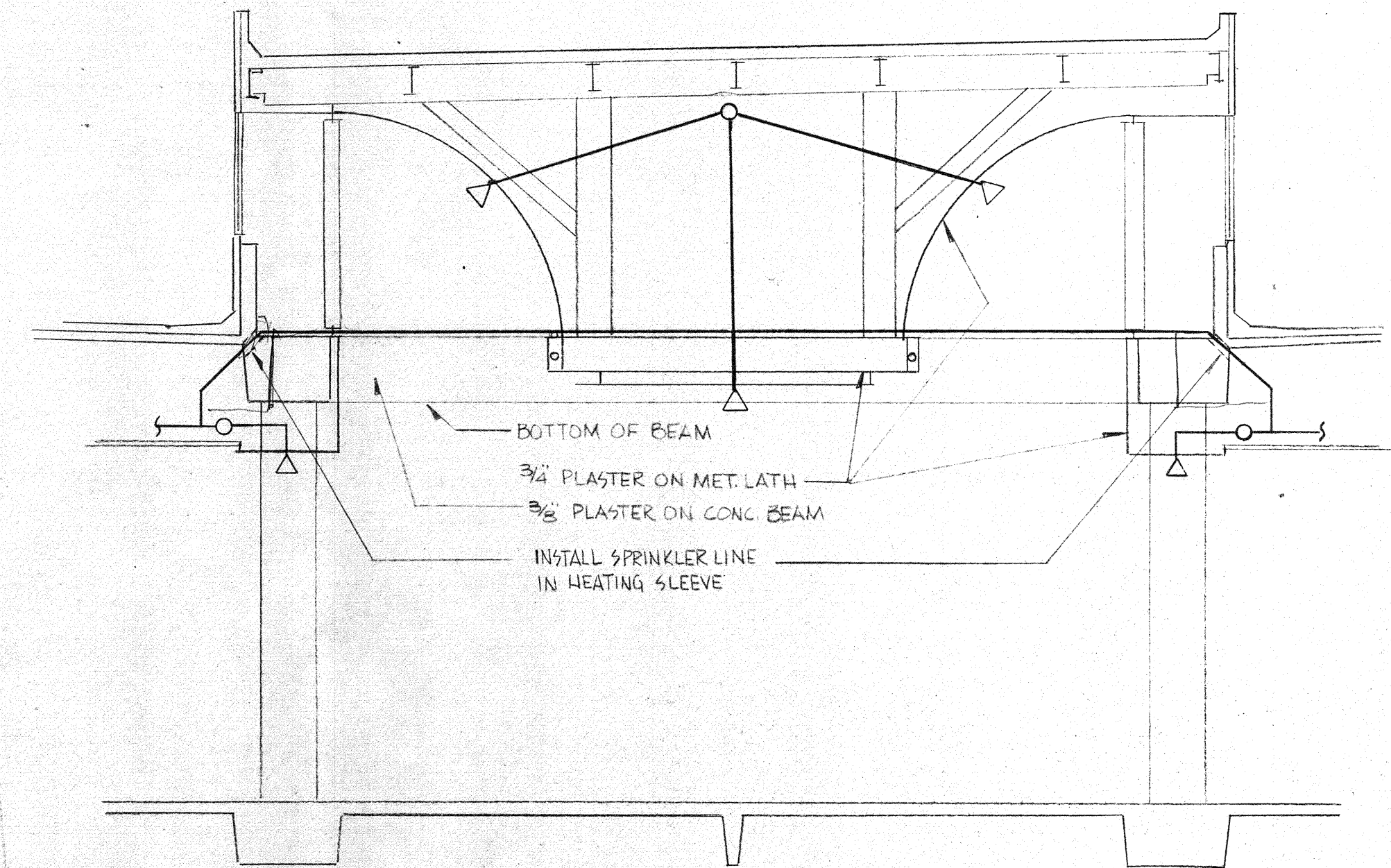
M-3
SHEET 3 OF 4

Copyright © _____



2ND FLOOR PLAN
SCALE: 1/8" = 1'-0"

↑ NORTH
L FIRE MAIN TOP OF EXIST. BEAM (HIDDEN FROM VIEW)



SECTION I-M4
NOT TO SCALE

These drawings do not include necessary components for construction safety.

I hereby certify that this plan, specification, or report was prepared by me or under my direct supervision and that I am a duly Registered Professional Engineer under the laws of the State of _____
Date _____ Reg. No. _____

DULUTH PUBLIC LIBRARY

SPRINKLER SYSTEM

TSP Duluth

TSP One, Inc.
310 Board of Trade Building
Duluth, MN 55802
(218) 722-6892

Project No. 50686
Drawn By MFS
Checked By ERV
Date 4-1-86
Copyright ©

M-4
SHEET 4 OF 4