

2022 Street Preservation Projects

City of Duluth

Virtual Public Informational Sessions



Patrick Loomis, PE
Project Engineer
218-730-5094
ploomis@duluthmn.gov

James Gittemeier
Senior Transportation Planner
218-730-5338
jgittemeier@duluthmn.gov



Meeting Agenda

- Background of Sales Tax Street Program
- Project Priority Setting – Why these streets?
- Project List and Maps – West, Central, & East
- Overview – Project Descriptions
- Project Schedule
- Traffic Control & Access During Construction
- Questions/Comments

Background of Sales Tax Streets Program

- 55% of the City of Duluth's 450 miles of local streets are in "poor" condition
- The 1/2 Percent Sales Tax Program was passed in 2017 by Duluth's voters
- It generates approximately \$7 million/year for street preservation; this project uses about half
- 2019 – sales tax funding collection began
- 2020 - first year of sales tax projects

City of Duluth Sales Tax Street Project



Project Priority Setting

- What do we consider in picking projects?
 - Pavement conditions
 - Coordination with Utility Needs (esp. Water)
 - Safe Routes to Schools (Plans)
 - Core Investment Areas (Imagine Duluth 2045 Plan)
 - Multi-Modal Needs (Pedestrian & Bike circulation)
 - Geographic Equity (City-wide project distribution)
- Deferred projects move to the top in the next year

2022 Street Preservation Projects - WEST

2022 Street Segments--West	Mileage	Construction Type
91st Avenue West, Idaho Street--Grace Street	0.18	Mill & overlay
Hilton Street, 88th Avenue W--Falcon	0.23	Mill & overlay
Hilton Street, 91st Avenue W--Idaho	0.12	Mill & overlay
Zimmerly Avenue, Commonwealth--Grand Avenue	0.23	Mill & overlay
94th Avenue West, Zimmerly--Boyd Avenue	0.07	Reclaim
Boyd Avenue, 93rd to dead end near 96th Avenue W	0.21	Reclaim
95th Avenue West, Zimmerly--Clyde Avenue	0.14	Reclaim

2022 Street Preservation Projects - CENTRAL

2022 Street Segments--Central	Mileage	Construction Type
West 1st Street , Mesaba Avenue-N 6th Ave West	0.07	Mill & overlay
11th Avenue West , W 1st Street-W 6th Street	0.31	Mill & overlay
1st Avenue East , Mesaba Ave-E 4th Street	0.34	Reclaim
E 7th Street , Mesaba Ave--6th Avenue East	0.60	Mill & overlay
4th Avenue East , 4th Street--Central Entrance	0.37	Mill & overlay
E 8th Street , 4th Avenue E--5th Avenue East	0.07	Mill & overlay
E 10th Street , 4th Avenue E--5th Avenue East	0.07	Mill & overlay
5th Avenue East , 7th Street--10th Street	0.20	Mill & overlay
Clay Street , Vinland Avenue--Skyline Parkway/end	0.41	Reclaim
Skyline Parkway , 24th Avenue W--Haines Road	1.61	Reclaim
Alley , East Skyline Parkway--6th Avenue East	0.07	Reclaim
26th Street South – W of Minnesota Ave	0.01	Overlay



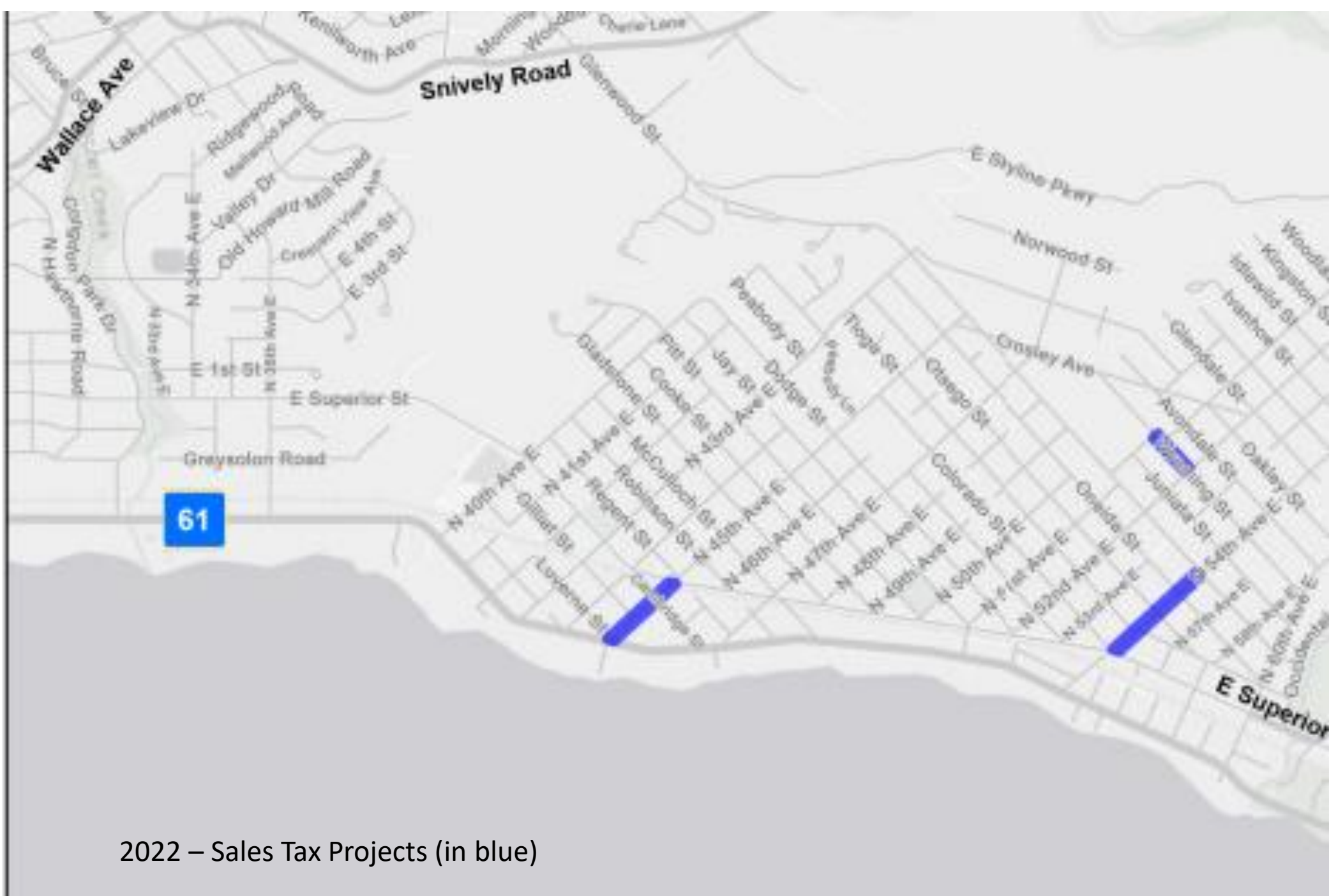


2022 – Sales Tax Projects (in blue)

2022 Street Preservation Projects - EAST

2022 Street Segments--East	Mileage	Construction Type
N 45th Avenue East, E Superior Street--London Rd	0.19	Mill & overlay
Wyoming Street, 51st Avenue E--52nd Avenue E	0.11	Overlay
N 54th Svenue East, Glenwood St--East Superior Street	0.27	Overlay



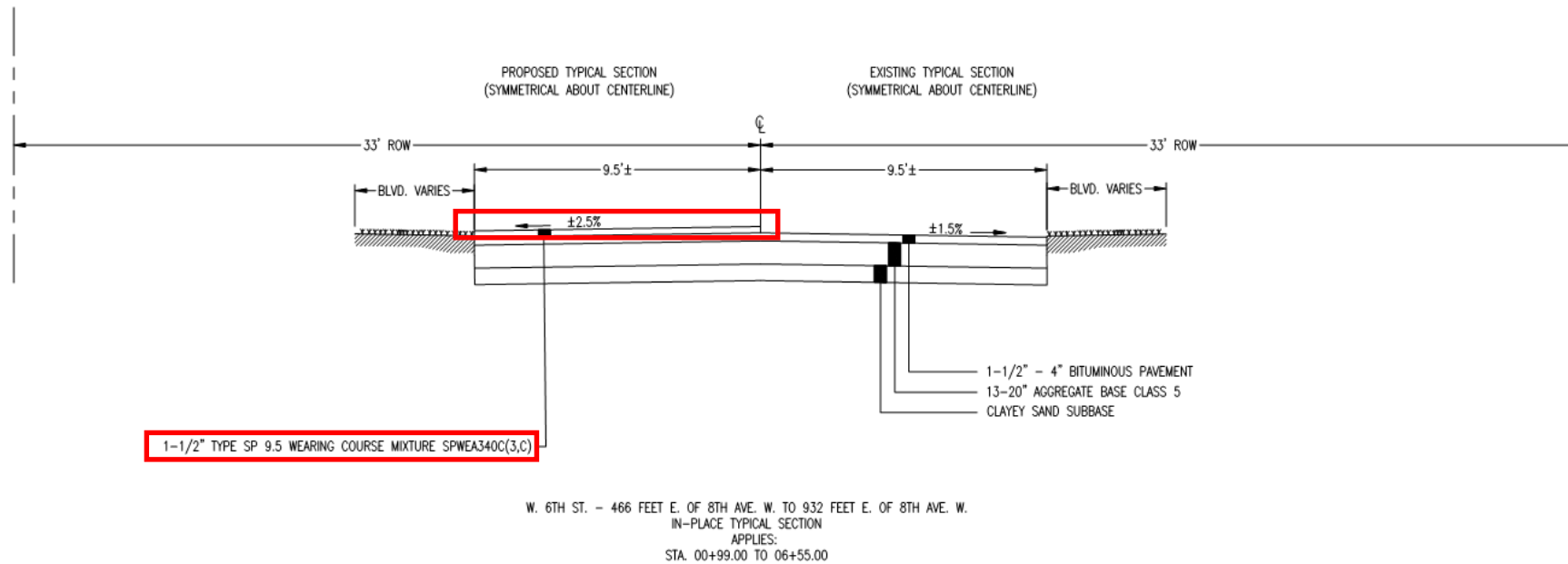


2022 – Sales Tax Projects (in blue)

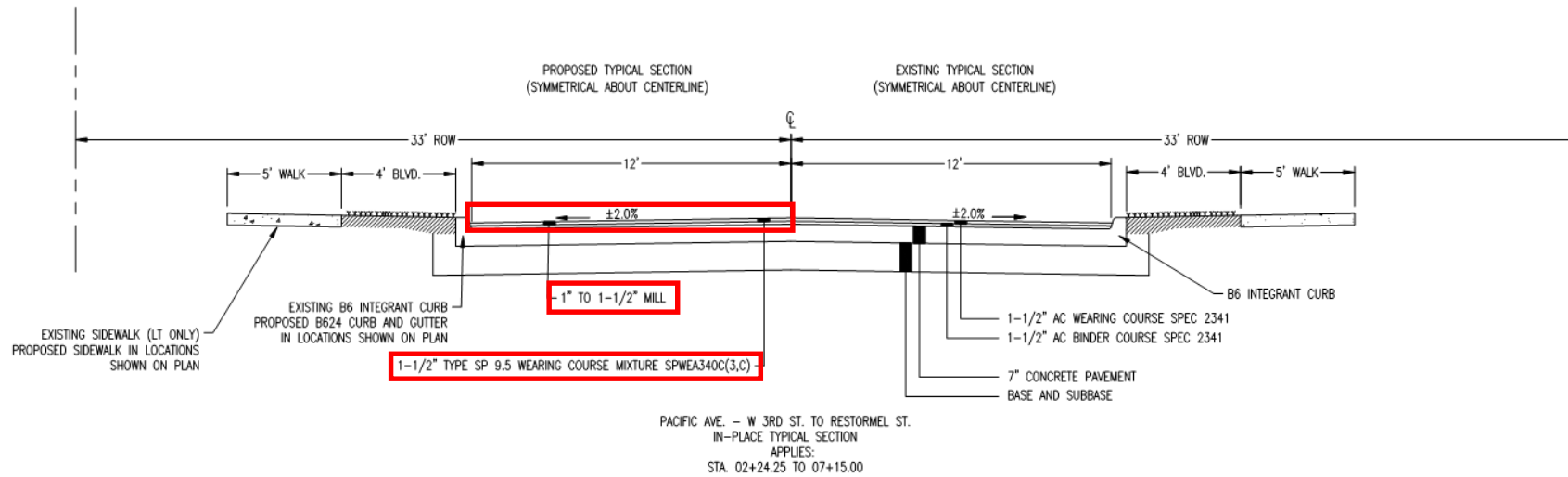
Overview: Project Descriptions

- Overlay
- Mill and Overlay
- Reclaim
- ADA Improvements – Curb ramps

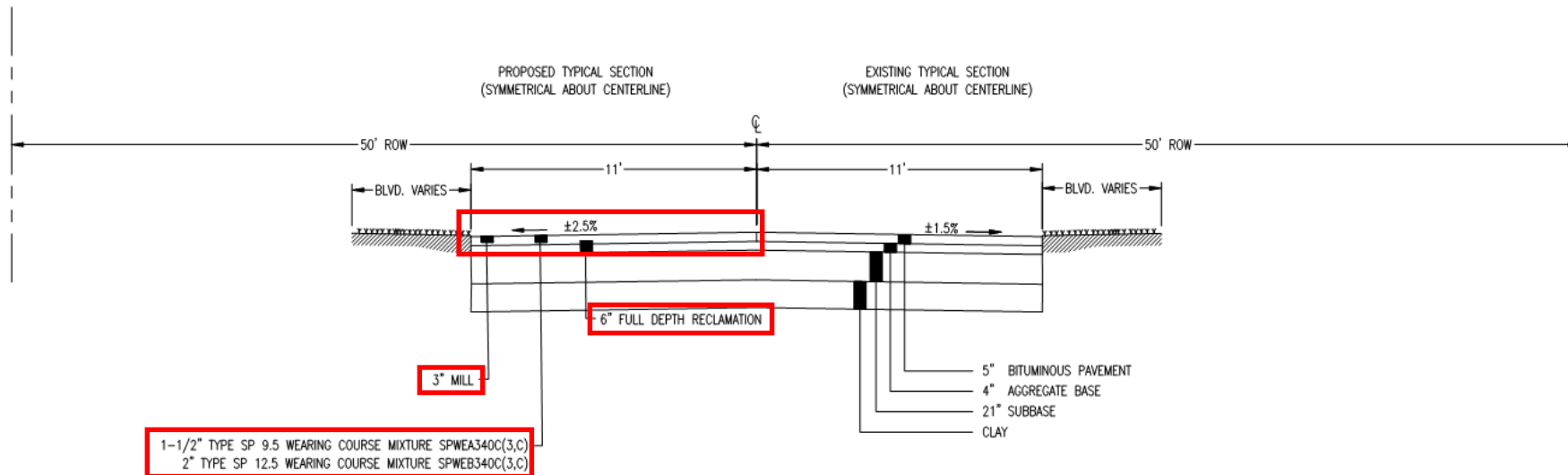
Overview: Overlays



Overview: Mill & Overlays

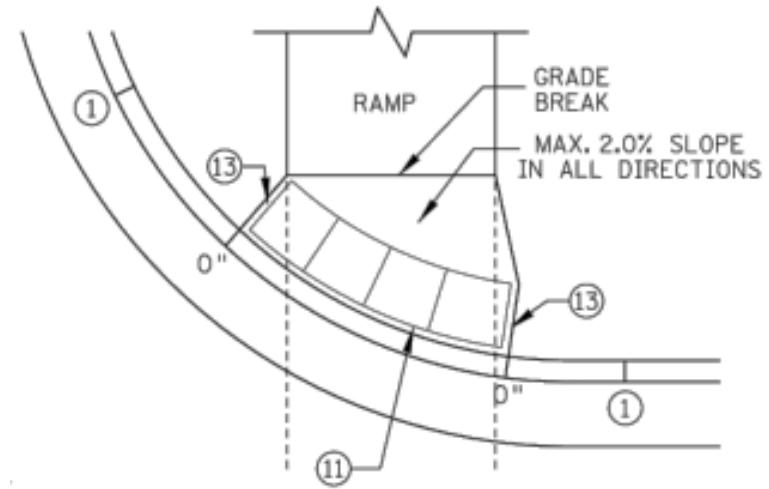
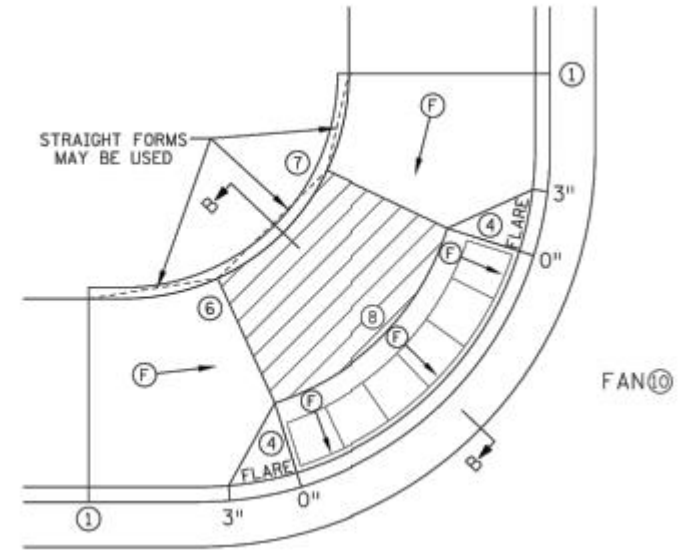


Overview: Reclaims



MEDINA ST. - N. 57TH AVE W. TO N. CENTRAL AVE
IN-PLACE TYPICAL SECTION
APPLIES:
STA. 01+20.50 TO 07+83.00

Overview: ADA Improvements



Program Schedule

- 90% Design March 2022
- Final Design April 2022
- Bidding April 2022
- Construction June-September 2022



Questions?

Project Contacts:

2022 Street Projects

Patrick Loomis, PE

Project Engineer

218-730-5094

ploomis@duluthmn.gov

Future Street Projects

James Gittemeier

Senior Transportation Planner

218-730-5338

jgittemeier@duluthmn.gov

