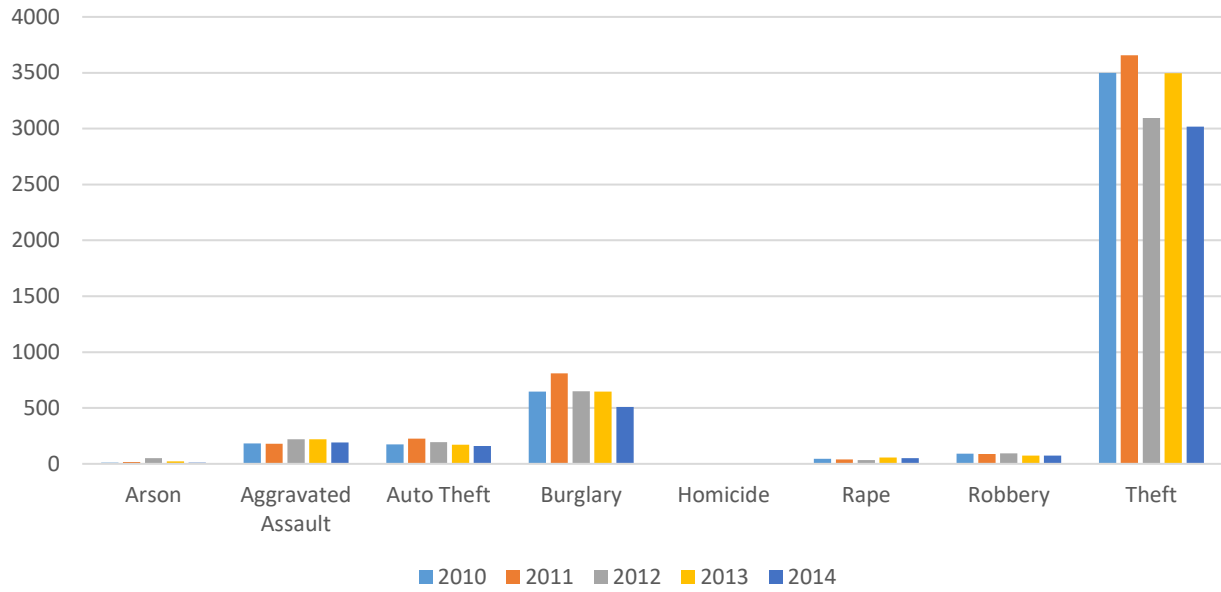


Part 1	2010	2011	2012	2013	2014
Arson	11	17	50	22	10
Aggravated Assault	184	180	219	219	192
Auto Theft	174	225	193	170	161
Burglary	646	809	649	646	508
Homicide	1	0	2	3	3
Rape	46	40	35	56	51
Robbery	92	89	93	73	75
Theft	3499	3656	3095	3497	3017
Total Part 1	4653	5016	4336	4686	4017

Part 2	2010	2011	2012	2013	2014
Disorderly Conduct/ Disturbing the Peace	497	456	426	583	602
DUI	427	357	268	267	286
Embezzlement	1	0	0	0	1
Family/Children	42	263	380	441	419
Forgery & Counterfeiting	115	72	120	62	107
Fraud	302	467	346	384	410
Gambling	2	0	0	0	0
Liquor Laws	600	509	418	514	431
Narcotics	553	506	627	758	615
Other Assaults	1021	1125	935	893	784
Other Sex Offenses	207	196	182	167	142
Prostitution	10	37	10	33	12
Stolen Property	31	43	53	49	43
Vagrancy	42	43	32	0	0
Vandalism	1311	1476	1160	1064	870
Weapons	43	43	32	50	42
Other	679	665	603	878	703
Total Part 2	5883	6258	5593	6143	5467

Grand Total	10,536	11,274	9,929	10,829	9,484
--------------------	--------	--------	-------	--------	-------

Part 1 Crimes 2010-2014



Part 2 Crimes 2010-2014

