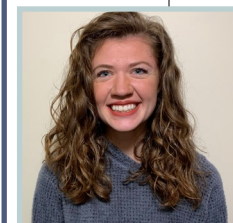


SUNDAY	MONDAY	TUESDAY	WEDNESDAY	THURSDAY	FRIDAY	SATURDAY
1	2	3 12:30-2:30pm Cribbage	4	5	6 12-3pm Bridge	7
8	9 No activities, closed for elections	10 No activities, closed for elections	11 No activities, closed for elections	12	13 12-3pm Bridge	14
15	16	17 12:30-2:30pm Cribbage	18	19	20 12-3pm Bridge	21
22	23	24 12:30-2:30pm Cribbage	25 ALL CITY SENIOR PICNIC	26	27 12-3pm Bridge	28
29	30	31 12:30-2:30pm Cribbage				

The City of Duluth Parks and Recreation is excited to bring back Senior Programs! Calendars will be updated as groups return to the centers. Information on returning programs can also be found on our website. If you are a group who would like to return, please contact Abby Proulx, Recreation Specialist to coordinate schedule and reopening process.



Abby Proulx
Recreation Specialist

Phone:
218-730-4310

Email:
aproulx@duluthmn.gov

To view up to date information on 55+ programs, please visit:
www.duluthmn.gov/parks/seniors

