

FOR IMMEDIATE RELEASE



City of Duluth - Parks and Recreation

411 West First Street • Duluth, Minnesota 55802
218-730-4309 • www.duluthmn.gov

*For more information contact Kate Van Daele,
Public Information Officer at 218-730-5309*

DATE: 4/8/2020

SUBJECT: City of Duluth Dedicates Additional Section of West Skyline Parkway to Bike/Pedestrian Use

BY: Kate Van Daele, Public Information Officer

City of Duluth Dedicates Additional Section of West Skyline Parkway to Bike/Pedestrian Use

[Duluth, MN] With natural surface trail closures, the City of Duluth continues to identify road segments that can be made available to citizens to encourage healthy outdoor activity while respecting social distancing guidelines.

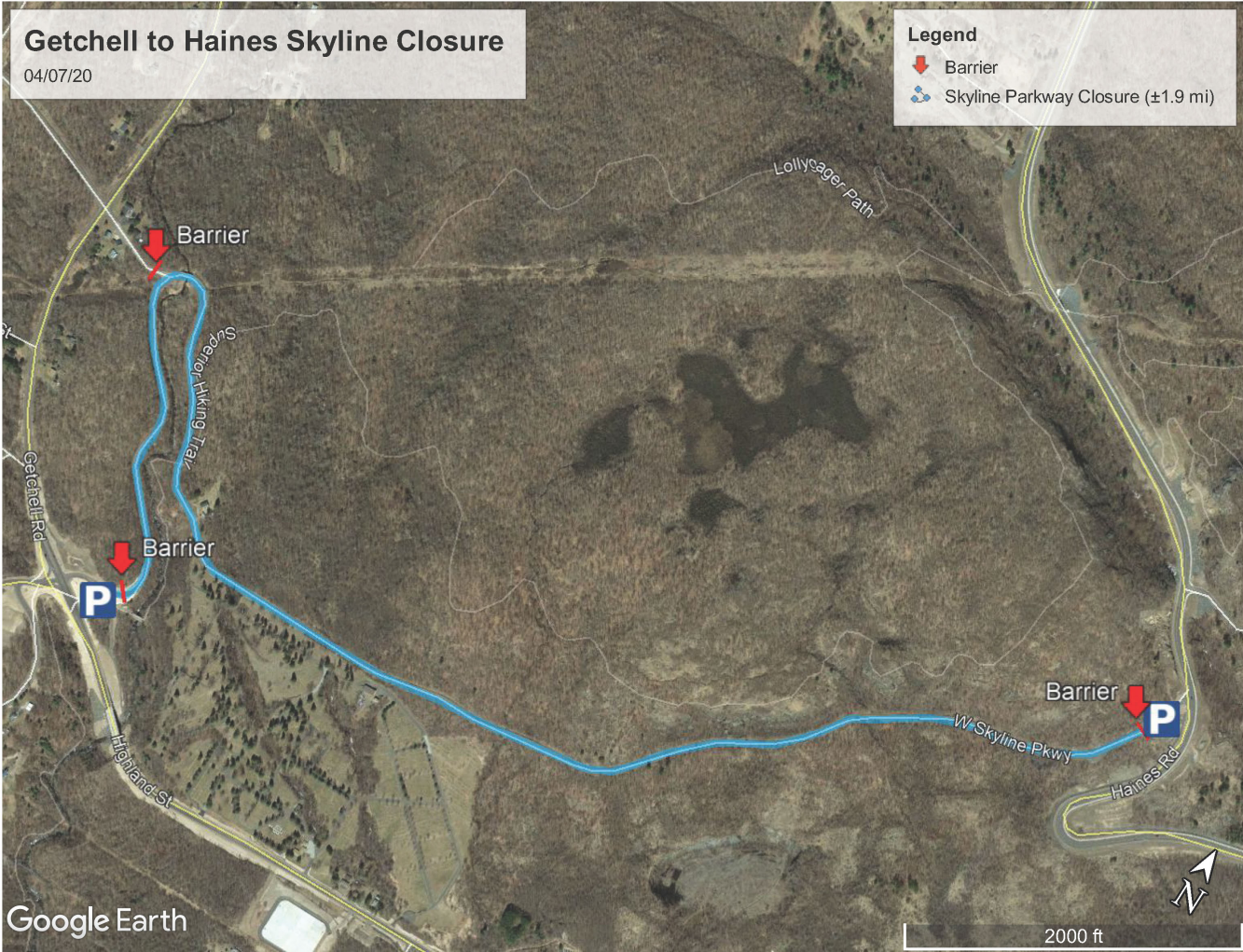
This new closure will be effective on Thursday, April 9, and stretches nearly two miles along West Skyline Parkway from Haines Road to Getchell Road, with parking available at either end of the road closure.

“As we continue to identify these areas for citizens to enjoy a walk or bike ride outdoors, we want to remind all users to respect social distancing guidelines,” said Parks and Recreation Manager Jessica Peterson. “If you notice a parking lot is quite full, that could be a good signal to consider a different location or a different, less busy time of day.”

In addition to the various road closures and paved trails for bike and ped use, the City also encourages residents to utilize their neighborhood parks and open space and enjoy a walk through their neighborhoods.

More information on parks, open space, and paved trails can be found on the City of Duluth’s Parks and Recreation web page: www.duluthmn.gov/parks.

###



Closure Map