



**FOR IMMEDIATE RELEASE**  
**City of Duluth - Parks and Recreation Division**

---

411 West First Street, Duluth, Minnesota 55802  
218-730-4309 | [www.duluthmn.gov](http://www.duluthmn.gov) | Lindsay Dean, Parks and Recreation Division Mgr.

For more information contact Pakou Ly, Public Information Coordinator 218-730-5309

**DATE: 3/9/2016**

**SUBJECT: Hartley Park Mini Master Plan Phase I Implementation Underway with Removal of Invasive Plants**

**BY: Pakou Ly, Public Information Coordinator**

---

## **Hartley Park Mini Master Plan Phase I Implementation Underway with Removal of Invasive Plants**

[Duluth, MN] - The City of Duluth Parks and Recreation division undertook a lengthy and intensive public process to develop the Hartley Park Mini-Master Plan. The Plan identifies specific areas for park improvements and enhancements that will provide an enjoyable experience for all users.

The initial phase of the Plan focuses on natural resource management through removal of invasive plant species that threaten the natural occurrence and survival of native plants. The City of Duluth has contracted with Prairie Restoration for this first phase of the Mini-master Plan and held an informational meeting last week to inform the public about the buckthorn removal process and timeline.

Workers started tackling the south end of Old Hartley Road this week, covering a 100 foot corridor into the forest. Workers are cutting the east side of the road first to the boardwalk area, returning on the west side. They will follow a similar process from the main Hartley Park parking lot to the meadow. Following the cutting, workers spot treat the stumps with herbicide. Treated areas are marked so the City recommends park users avoid the treated areas. Once Hartley Road is complete, work will move to the Pine plantations where stems will be basally treated and left standing. The Plan also identified the highest buckthorn density on the attached map to guide the removal work.

The contractor has 5-6 workers on site daily between the hours of 8:30 AM until dark. The project entails cutting buckthorn, chipping on site and reducing the densest buckthorn colonies. The contractor will establish a couple of burn piles (see map) as wet soil makes it too difficult to haul in heavy equipment to chip and throw buckthorn back onto the forest floor in some areas of the park. Burn piles will be closely monitored and contained and are not located near residences though area residents will see and smell smoke. The project should be completed by the end of March as this is the time of year when buckthorn propagates.

Anyone interested in updates on this and upcoming work can visit the Hartley Park Mini-Master Plan webpage at

<http://www.duluthmn.gov/parks/parks-planning/hartley-park-mini-master-plan/>

Other questions can be directed to the Project Coordinator, Jim Shoberg at [jshoberg@duluthmn.gov](mailto:jshoberg@duluthmn.gov) or Judy Gibbs at [jgibbs@duluthmn.gov](mailto:jgibbs@duluthmn.gov)

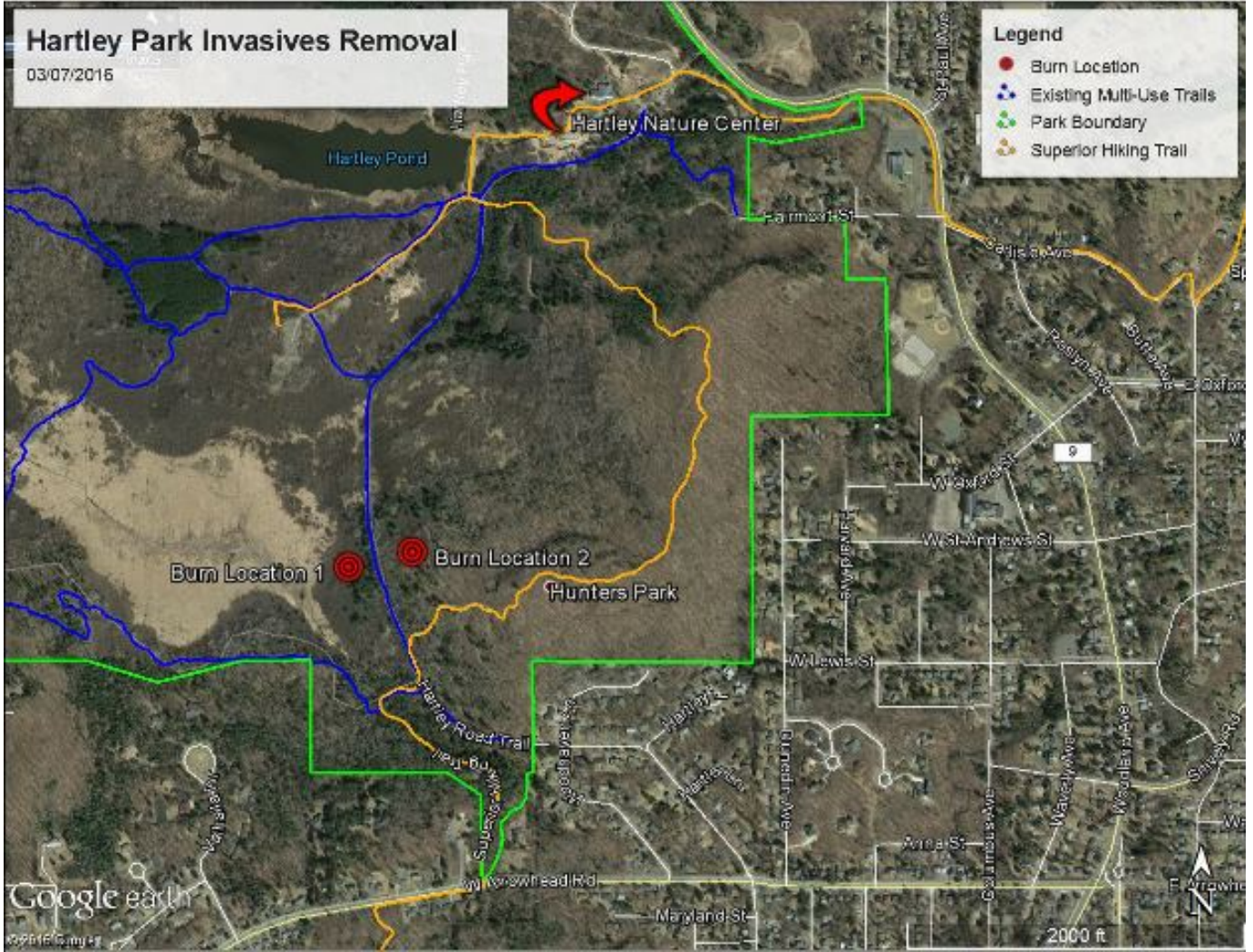
###

# Hartley Park Invasives Removal

03/07/2016

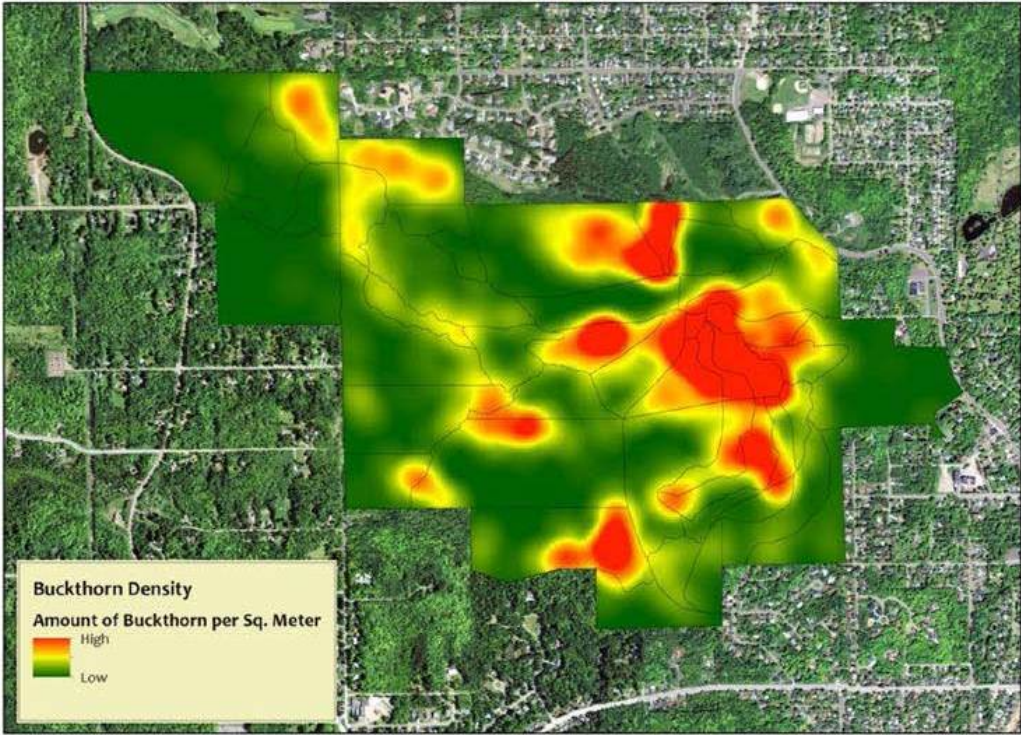
**Legend**

- Burn Location
- Existing Multi-Use Trails
- Park Boundary
- Superior Hiking Trail



Google earth  
© 2016 Google

# Heat Map of Buckthorn Density in Hartley Park



Author: Stephanie Gibeau  
Source: Ethan Perry, Dave Schimpf, COGCS, UMD GAC, NHD, MN DNR

*Buckthorn density analysis*