

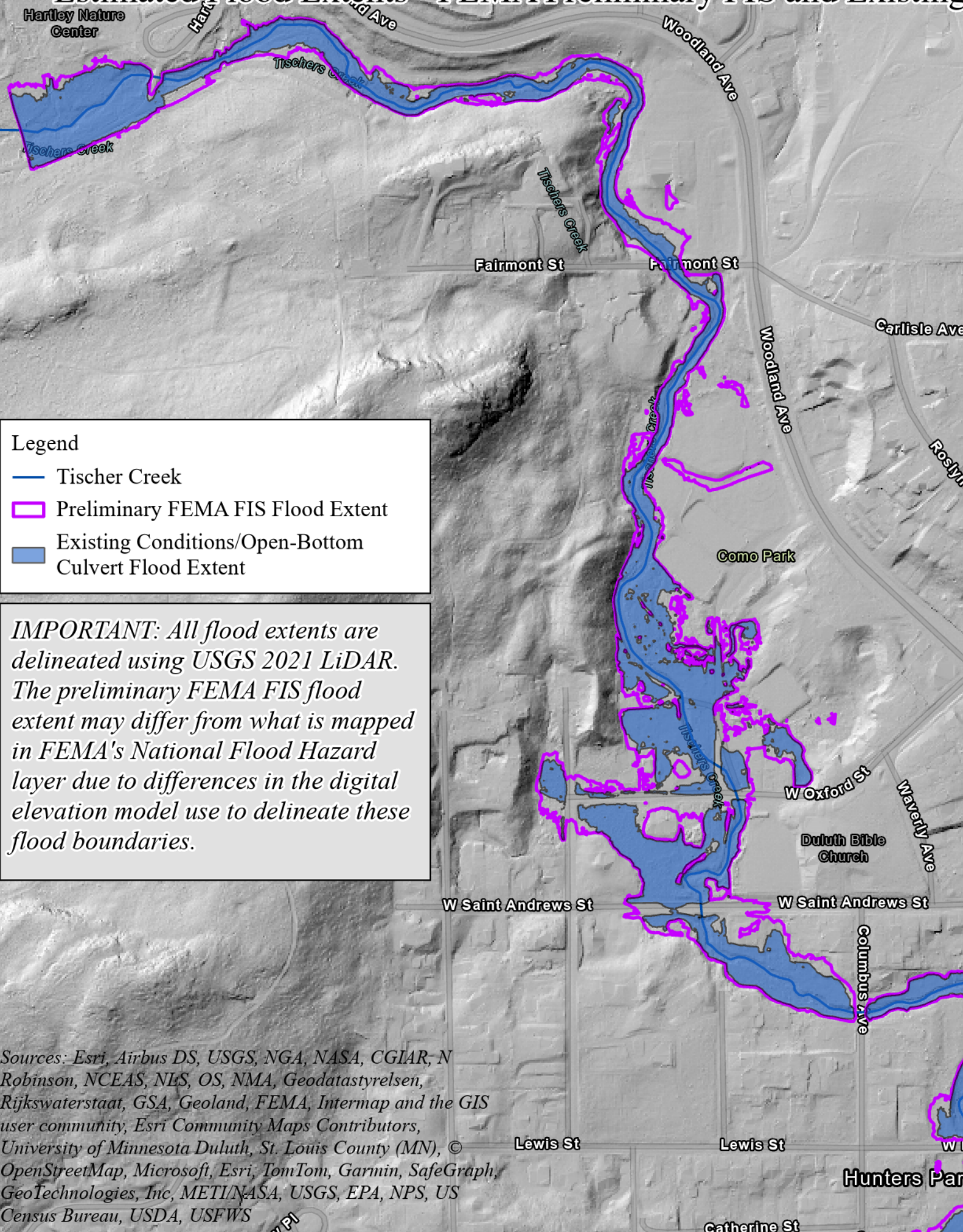
# Appendix E

---

## Draft Alternative Floodplains

The delineated flood extents that are presented in **Appendix E** were created using the USGS 2021 ½ meter resolution LiDAR, which is currently the highest resolution publicly available data. The preliminary FIS floodplain delineations use a variety of elevation data sources, all of which have less than ½ foot resolution. GEI reviewed these surfaces and determined that they are well aligned for this preliminary level of analysis, and the minimal differences will not affect the outcomes of the feasibility study. However, it is important to note that the preliminary FIS floodplain boundaries displayed below may show slight differences than the FIRM panels due to the difference in elevation source data. These floodplain figures are approximate and should only be relied upon in relative terms to each other and nothing more.

# Estimated Flood Extents - FEMA Preliminary FIS and Existing Conditions/Open-Bottom Culvert Model Results (100 yr flows)

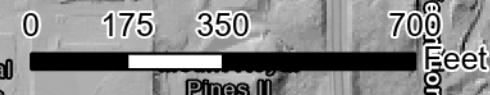
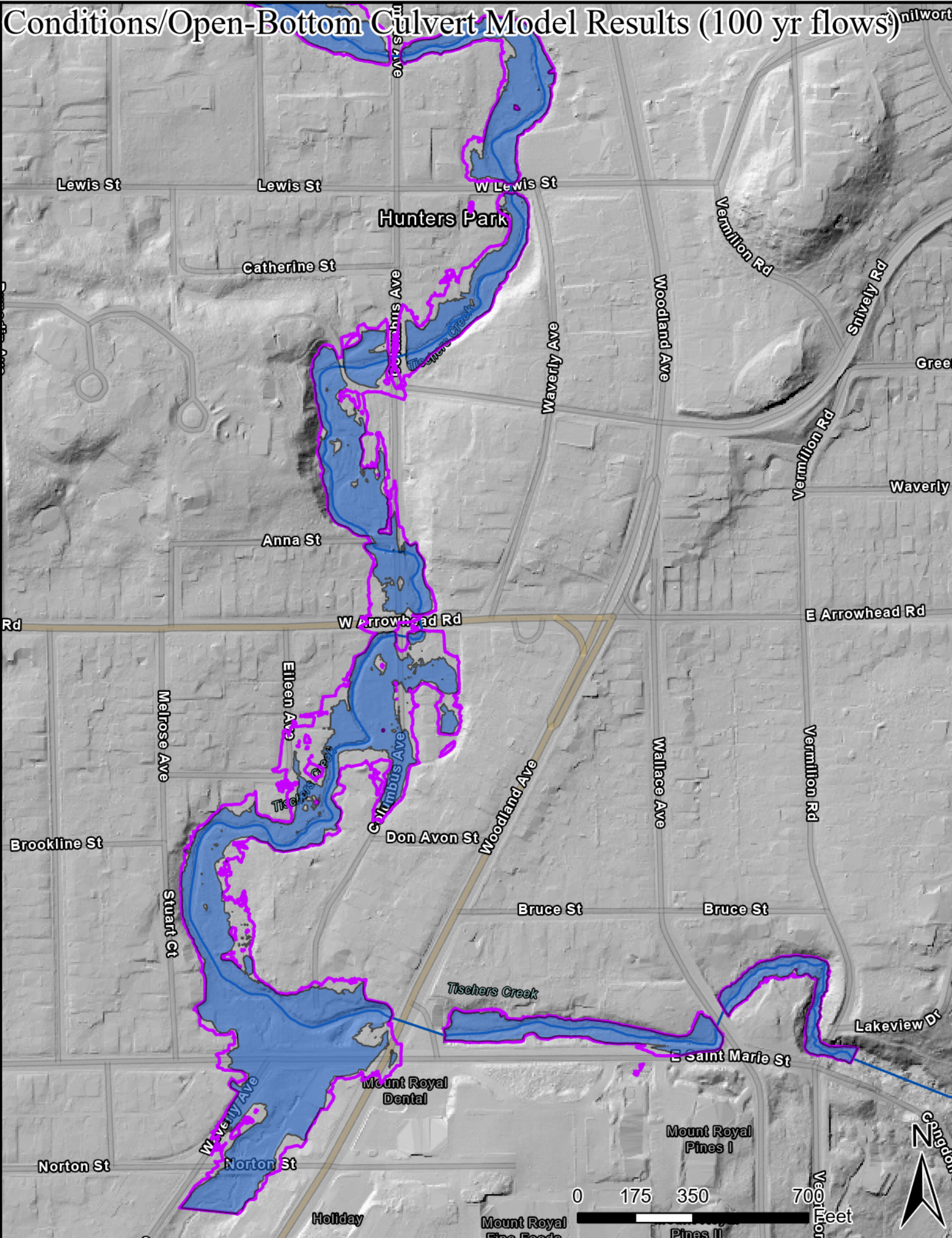


**Legend**

- Tischer Creek
- Preliminary FEMA FIS Flood Extent
- Existing Conditions/Open-Bottom Culvert Flood Extent




***IMPORTANT:** All flood extents are delineated using USGS 2021 LiDAR. The preliminary FEMA FIS flood extent may differ from what is mapped in FEMA's National Flood Hazard layer due to differences in the digital elevation model use to delineate these flood boundaries.*

*Sources: Esri, Airbus DS, USGS, NGA, NASA, CGIAR, N Robinson, NCEAS, NLS, OS, NMA, Geodatastyrelsen, Rijkswaterstaat, GSA, Geoland, FEMA, Intermap and the GIS user community, Esri Community Maps Contributors, University of Minnesota Duluth, St. Louis County (MN), © OpenStreetMap, Microsoft, Esri, TomTom, Garmin, SafeGraph, GeoTechnologies, Inc, METI/NASA, USGS, EPA, NPS, US Census Bureau, USDA, USFWS*



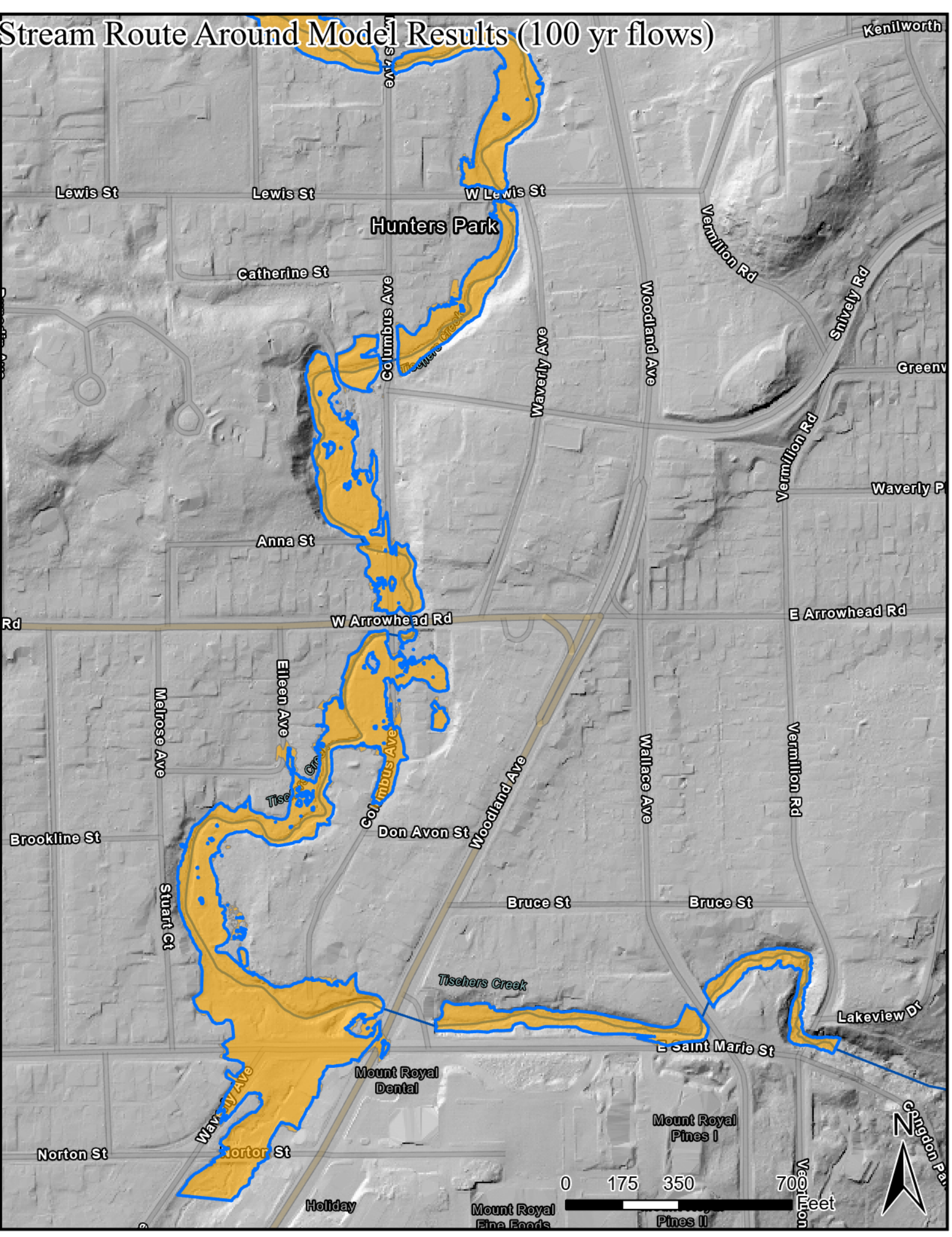
# Estimated Flood Extents - Existing Conditions and Stream Route Around Model Results (100 yr flows)

**Legend**

-  Tischer Creek
-  Stream Route Around Flood Extent
-  Existing Conditions Flood Extent




*IMPORTANT: All flood extents are delineated using USGS 2021 LiDAR.*

Sources: Esri, Airbus DS, USGS, NGA, NASA, CGIAR, N Robinson, NCEAS, NLS, OS, NMA, Geodatastyrelsen, Rijkswaterstaat, GSA, Geoland, FEMA, Intermap and the GIS user community, Esri Community Maps Contributors, University of Minnesota Duluth, St. Louis County (MN), © OpenStreetMap, Microsoft, Esri, TomTom, Garmin, SafeGraph, GeoTechnologies, Inc, METI/NASA, USGS, EPA, NPS, US Census Bureau, USDA, USFWS



# Estimated Flood Extents - Existing Conditions and Dam Removal Model Results (100 yr flows)

**Legend**

-  Tischer Creek
-  Dam Removal Flood Extent
-  Existing Conditions Flood Extent

*IMPORTANT: All flood extents are delineated using USGS 2021 LiDAR.*

Sources: Esri, Airbus DS, USGS, NGA, NASA, CGIAR, N Robinson, NCEAS, NLS, OS, NMA, Geodatastyrelsen, Rijkswaterstaat, GSA, Geoland, FEMA, Intermap and the GIS user community, Esri Community Maps Contributors, University of Minnesota Duluth, St. Louis County (MN), © OpenStreetMap, Microsoft, Esri, TomTom, Garmin, SafeGraph, GeoTechnologies, Inc, METI/NASA, USGS, EPA, NPS, US Census Bureau, USDA, USFWS

