



FOR IMMEDIATE RELEASE
City of Duluth - Parks and Recreation Division

411 West First Street, Duluth, Minnesota 55802
218-730-4309 | www.duluthmn.gov | William Roche, Parks and Recreation Division Mgr.

For more information contact Pakou Ly, Public Information Coordinator 218-730-5309

DATE: 10/16/2018

SUBJECT: Celebration of Completed Stewart Creek Railroad Bridge and the Clyde Connector Trail Planned for October 19th

BY: Pakou Ly, Communications Office

**Celebration of Completed Stewart Creek Railroad Bridge and the Clyde Connector Trail
Planned for October 19th**

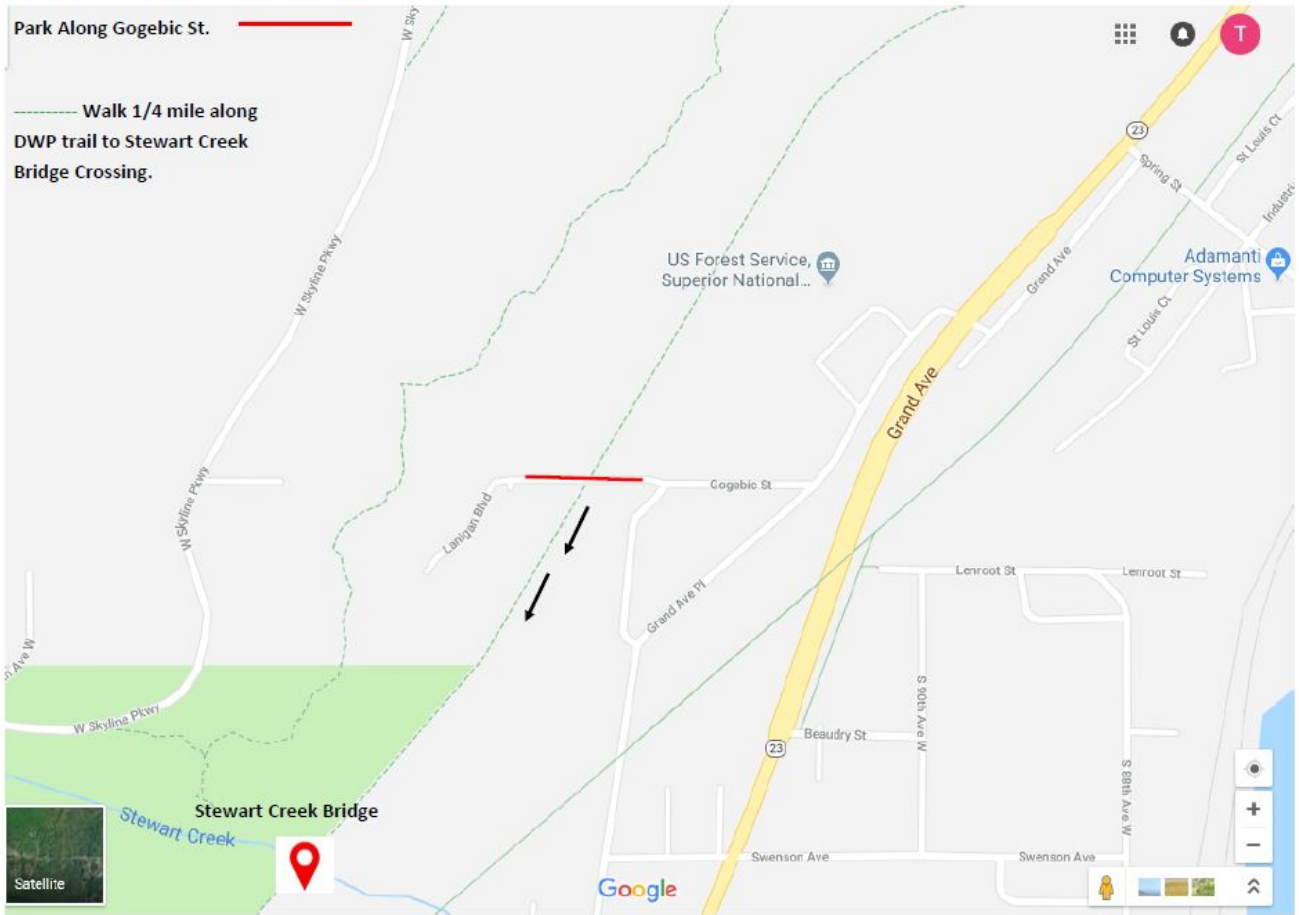
[Duluth, MN] – The City of Duluth Parks and Recreation Division will celebrate completion of two critical infrastructure repairs along the former DWP Trail Corridor: a railroad bridge that now provides safe passage over Stewart Creek on the Duluth Winnipeg and Pacific (DWP) Trail Corridor and the Clyde Connector Trail that provides restored neighborhood access to the DWP and Skyline Parkway. This celebration event will take place on Friday, **October 19th at 12 PM**. Completion of the Stewart Creek Railroad Bridge and the Clyde Connector Trail mark the beginning of the City's desire to restore and repair nearly 10 miles of the trail corridor, including trestles, rail beds and a tunnel under Ely's Peak.

The railroad bridge project included replacement of deteriorated decking with modern wood decking, restoring flood damaged concrete abutments, and installing cable railings for fall protection. The project was funded in part by a \$200,000 Regional Trail Program grant from the Minnesota Department of Natural Resources and \$330,000 of half and half tourism tax funds. The Clyde Connector Trail reestablishes multi-use access to the State's Munger Trail, Skyline Parkway, Western Waterfront Trail, Superior Hiking Trail, and the Duluth Traverse, while contributing to a 9-mile equestrian trail system. This project was funded in part by a \$150,000 Federal Regional Trail Grant and \$150,000 of half and half tourism tax funds.

Attendees, including media, are asked to park on Gogebic St. (accessible from Grand Ave then to Grand Place) and walk 1/4 mile to the Stewart Creek Railroad Bridge.

###

Stewart Creek Bridge and Clyde Connector Trail Press Event



Map of Event Location