

DULUTH PARKS AND RECREATION



needs assessment

Background

DECEMBER 2010

PHYSICAL
EVALUATION

COMMUNITY
INPUT

COMMUNITY
COMPARISONS

TABLE OF CONTENTS

This document is a summary of the community and stakeholder input collected in 2010 for use in guiding the content and direction of the Duluth Parks and Recreation Master Plan. Over 1000 Duluth residents participated in the community input process.

PHYSICAL EVALUATION

PARKS AND RECREATION SYSTEM MAPS	- 2
FIELD EVALUATION	- 4
DISTRIBUTION ANALYSIS	- 20
PARK & AMENITY INVENTORY	- 24

COMMUNITY INPUT

PARKS AND RECREATION COMMISSION INPUT	- 28
FOCUS GROUPS	- 34
COMMUNITY OPEN HOUSES	- 46
COMMUNITY SURVEY	- 70
ON-LINE SURVEY	- 94

COMMUNITY COMPARISONS

COMMUNITY BENCHMARKS	- 108
-----------------------------	--------------

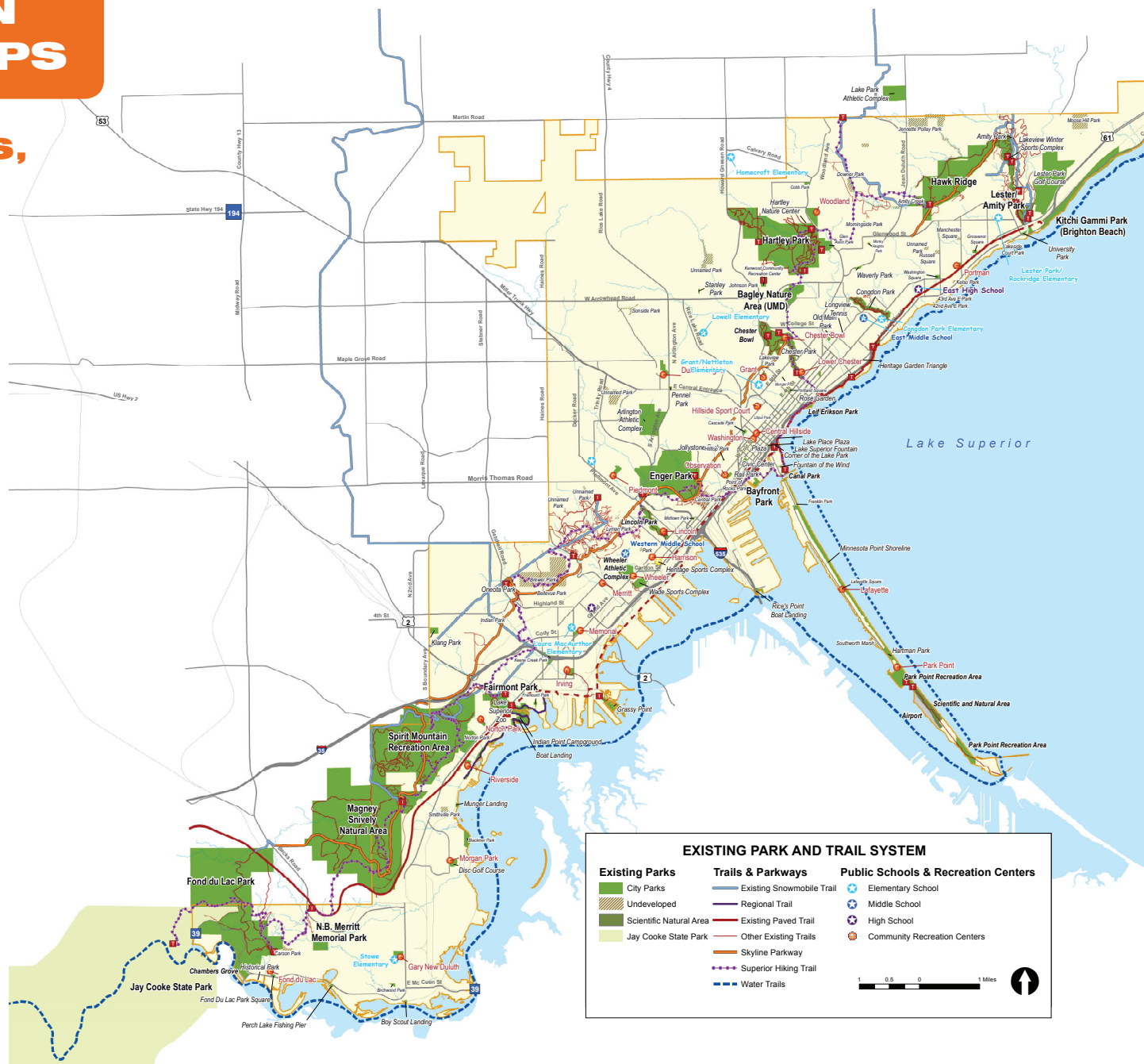
(1)

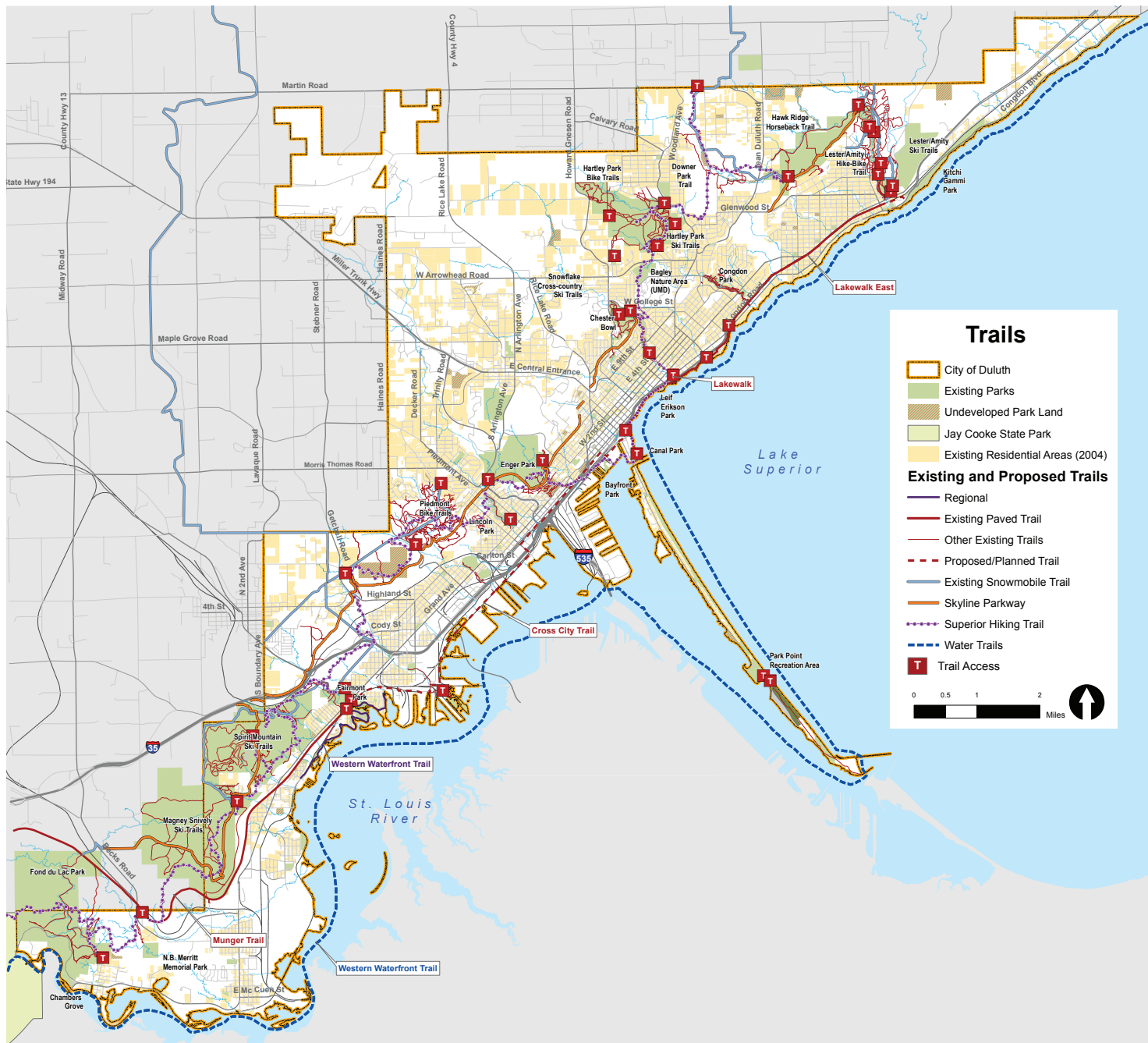
PARK AND RECREATION SYSTEM MAPS

EXISTING PARKS, TRAILS, AND RECREATION CENTERS

PHYSICAL EVALUATION

(2)





EXISTING TRAIL SYSTEM

FIELD EVALUATION

The Field Evaluation was based on the consultant team's initial observation of the Duluth park system. It is not inclusive of the entire park system, but rather was meant to give an overview of the varying degree of quality and service provided by parks to Duluth residents.

Bayfront Park

- Premier festival and outdoor event park
- Signature destination children's play area
- New park shelter building
- Winter outdoor skating



Brighton Beach - Kitchi Gammi Park

- Popular passive park, picnicking and beach
- Located on Lake Superior
- WPA stone work structure
- Parking and lake connection for travelers up to the north shore



Boyscout Landing

- Sergeants Creek a trout stream enters St Louis River here
- DNR landing that is City maintained
- Fantastic fishing spot
- Parking Lot is heavily used
- Boat landing
- Future construction plans

Blackmer Park

- Nice neighborhood park on the river in in Morgan Park
- Multi-use site

Chambers Grove

- Numerous shore fishing opportunities on St. Louis River
- Great picnic park
- Handicap accessible
- Great space (including picnic shelter, bathrooms, swing set, and gazebo) that can be rented for birthdays, reunions, weddings, and other special events.
- Boardwalk in good shape



Chester Bowl

- Rich skiing history
- 700-800 ski rentals a year
- 2 miles of cross country ski trails
- Chalet, creek, picnicking, ski jumps
- 2 small soccer fields, girls fast pitch softball field
- Popular park
- Summer concerts
- A Linear park with Chester Creek runs through
- Play ground and pond
- YMCA summer programming
- Beautiful rock outcroppings
- Important water connection to lake Superior in spring thaw



Lower Chester/ Chester Commons City Center West

- In-line skate
- Future community gardens
- Newer mixed use building – senior center, library, police and fire

Como Park – Glen Avon

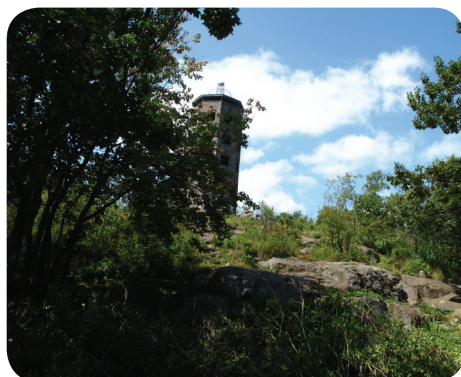
- Nice little league baseball facility

Enger Park

- Tower is deteriorating and in need of repair
- Park used for weddings
- Peace bell
- Perennial gardens and look out tower
- Picnic shelter, mature trees

Enger Park Golf Course

- 27 hole course
- City owned and privately managed



Fond Du Lac

- Used for snowmobile riding and hiking
- Future desired use for mountain biking
- Trailhead for Superior Hiking Trail and Mission Creek
- Community center- poor condition
- Tennis court
- Remote location



Fairmont Park

- Located next to the Lake Superior Zoo
- Bathrooms available Condition of restrooms good
- Picnic and play area in good shape
- Park users allowed to use Zoo's Pavilion



Gary New Duluth

- Recreation/community center in poor shape
- School intends to take over community center
- Skate Park



Gary – Stowe School

- Poor quality recreation building



Grassy Point

- Trail, floating boardwalk and platforms
- Bird watching and nice views
- Wetland park
- Located on St. Louis river



Hartley Nature Center

- City owned and run by a non-profit organization
- Great environmental education building and programs
- Highly used
- Parking lot, nature trails
- Trout stream
- Trails (hike, mountain bike and cross-country ski)



Hawk Ridge

- City owned co-managed with birding group
- Birding and raptor observation watching
- Horse, cc ski, snowmobile and hiking trails
- Superior Hiking Trail is the “thread” that connects parks
- Located on Skyline Boulevard
- Street parking

Harrison Park

- Newly renovated park
- New building and playground
- Future handicap accessible baseball field planned

Heritage Sports Complex

- New indoor hockey rinks
- Field turf surface during the summer
- Indoor court and field sports need space in the winter
- Ample parking
- Highly used by organized teams



Indian Peak Campground

- City owned and privately managed
- Very well used
- Located just off of Munger Trail and near the start of the Excursion Train
- Could use a reforestation plan



Irving Community Center

- Active community group use
- Active hockey use (2 rinks)
- Trail along Keane Creek at the edge of park connects to the Grassy Point Trail
- If renovated, the park could serve more regional park needs
- Soccer field
- Building recently painted and updated



Keene Creek Dog Park

- Over-used; no grass left in many areas
- Need bathrooms
- Park needs to be expanded or other dog parks need to be added in order to keep park sustainable
- Parking is available



Lake Place Park

- Sculpture garden
- Pedestrian connection between downtown and the lakewalk
- Located over I-35 tunnel

Leif Ericson Park

- Stone performance stage
- Large open play space
- Located on Lake walk
- Native plant garden
- Lake connection to rose garden
- Ramp connection from Lake walk to London Road
- Viking ship

Lester

- Seven Bridges Road
- 2 hockey rinks
- 3 miles of lighted cross country ski trails
- Mountain bike, hike and snowmobile trails
- Parking
- Linear park with Lester and Amity Creek running through it
- Children's play ground
- Picnic structure
- Stone rustic pedestrian bridge



Lincoln Park

- Historic character
- Beautiful, serene park space that is sunken and slightly separated from the neighborhood
- Tranquil falls and stream through park
- WPA pavilion, play equipment and baseball field
- Important stream for spring runoff to Lake Superior
- Could benefit from some attention
- One of Duluth's key parks



Longview Tennis Center

- City owned, privately operated
- Provide summer programming for children and adults
- Well attended outdoor tennis courts
- Outdoor stadium seating
- Club house in great condition

Magney Snively

- Old growth forest managed by City and Spirit Mountain
- Used for snowmobile riding, horseback riding, and rock-climbing (Ely Peak)
- Park is under-utilized and access is somewhat hidden



Memorial Park

- Removal of recreation center, new school adjacent with planned recreation center
- Pavilion with bathrooms
- Memorial Park/McArthur Park renovation
- Play ground equipment
- High visablity to community
- Baseball field
- Parking lot
- Located near West Duluth Business District



Merrit Park

- Small neighborhood park
- Recreation center in poor shape “pickled”
- Hockey rink maintained by DAHA

Morgan Park

- Good quality recreation building
- Active community group
- Active hockey and disc golf organization (Good Fellowship Club)
- DAHA maintains outdoor rinks (2)
- Parking lot
- Bocce courts and active Bocce ball league



Munger Boat Landing

- Popular boat land and fishing pier on the St. Louis River



Morley Heights Park

- Community Park in historically planned community
- Open green space in boulevard setting



Norton Park Community Club

- Building is in poor quality "Quanset hut" structure
- Strong neighborhood support
- The field space gets used for T-ball and occasional softball
- Playground is in decent shape
- Abandoned hockey rink in lower park area
- No on site parking



Park Point

- Beach house has been newly remodeled “pickled” this should be looked at
- Beach, large parking area, boat landing and soccer fields
- Picnicking
- Children’s play area
- Volleyball, Lacrosse, and Ultimate Frisbee are played here
- Largely used for Beach access to tourist and locals
- Bathrooms
- Dunes and boardwalks
- Unique dunes vegetation



Piedmont/Duluth Heights

- Informal sledding area
- Has Community Rec Center
- Base ball field
- Hockey rink
- Some informal on-site parking



Portman Square

- Unique, beautiful building; but it is in need of work
- Building not ADA Accessible
- Multi-use park
- Some recent site work- off street parking
- Senior dinning program
- Baseball field
- Active Hockey association
- Play equipment
- Neighbor hood park
- Heavily used



Riverside Park Community Center

- Building in poor quality
- Playground is in nice condition



Rose Garden

- Beautiful well tended rose garden
- Duluth most visited outdoor space
- Lots of wedding take place here a year
- Located over I-35
- Beautiful views out to lake Superior
- Stone gazebo and fountains
- Brick cobble walkways
- Decorative and sculpture benches
- Newer bathrooms
- Nice off street parking
- Family park, a connection to the Lakewalk and Leif Erickson park
- No Dogs allowed in park



Twin Ponds

- Sandy beach area at Swimming pond
- Fish pond with dock
- Located on skyline Boulevard
- Ample off street parking
- Nice views to Lake Superior



Wade Stadium

- WPA era brick stadium (historic structure) used for baseball
- Softball and soccer fields
- Historic Field
- Stadium Parking
- One Brick enclosed semi professional field Four other ball fields

Wheeler Sports Complex

- Park maintenance operations facility
- Playground
- Field house building
- 5 ball fields
- Tennis courts
- bocce ball courts
- Concession building
- Ample Parking

Waterfront/Lake Walk

- Favorite place to visit for both locals and tourists
- Located along the shores of Lake Superior
- Boardwalk and paver surfaces
- Access to beaches and other parks along the lake walk
- Highly used by tourist and Duluthians - Duluth's most used park
- Recently extended into the Lake Side neighborhood
- Exceptional views



Woodland Park

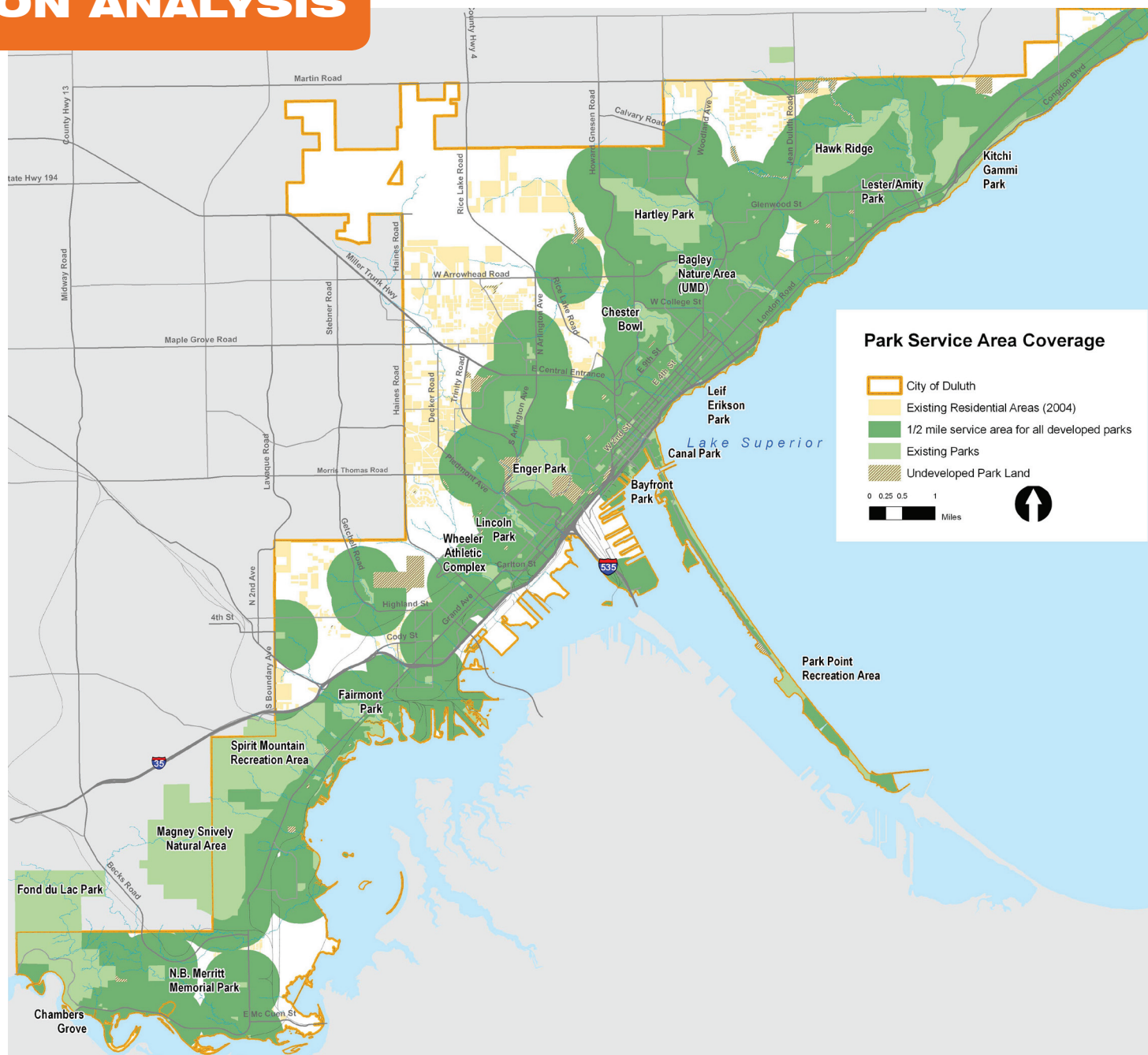
- Community center building programmed by the YMCA for gymnastics
- Softball, baseball and soccer field, 2 tennis courts and basketball court
- 2 outdoor rinks (run by DAHA)
- Popular park

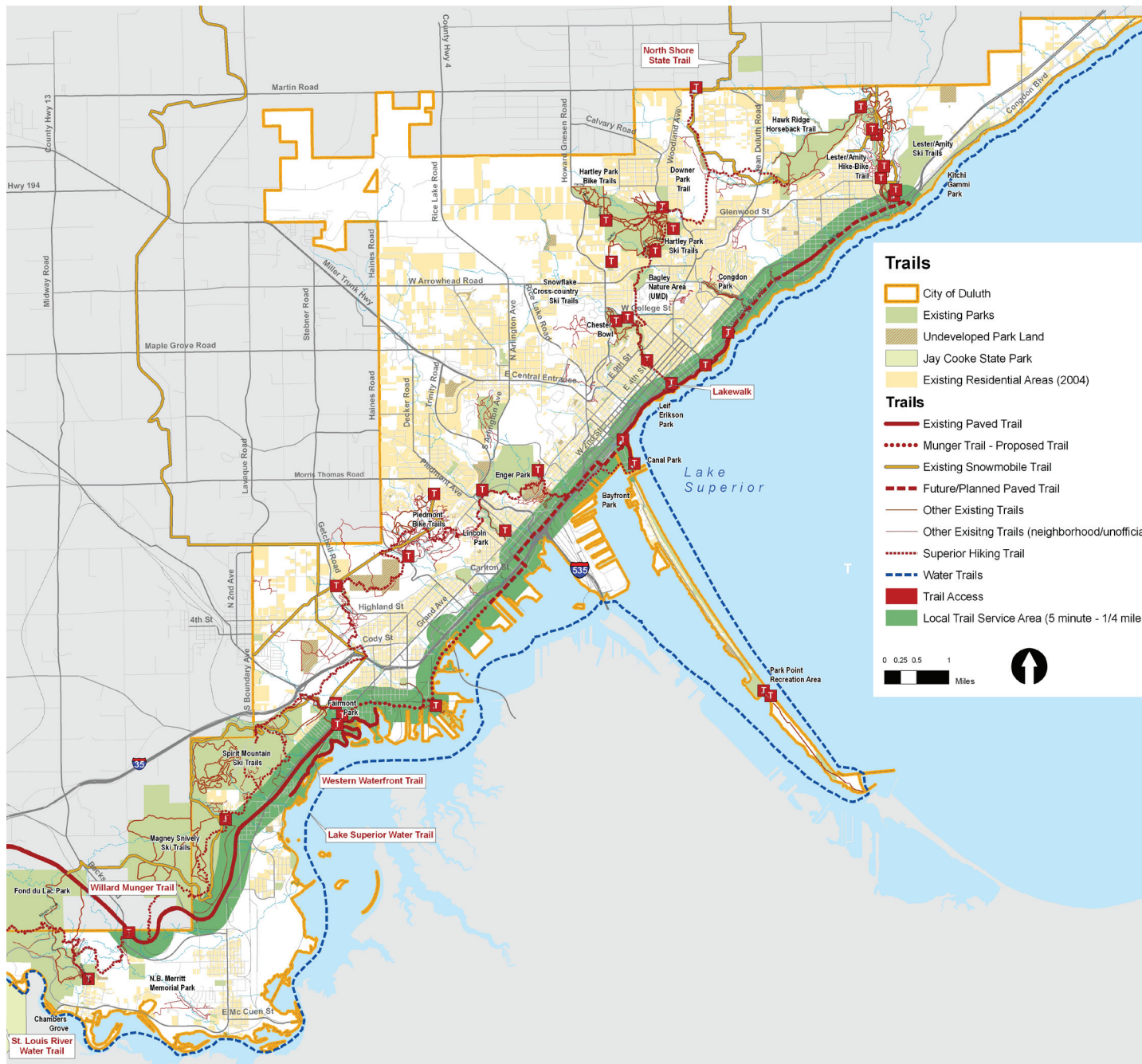
DISTRIBUTION ANALYSIS

ALL PARKS

The map to the right, Park Service Area Coverage, illustrates the residential areas that are not within a half mile distance to a City park - these areas can be seen in beige.

This map shows that most Duluth residents are within 1/2 mile of a City park. There are service coverage gaps in the residential areas in the northwest part of the City. Also some physical barriers such as busy roads, railroads, and creeks inhibit easy access to parks for some residents.





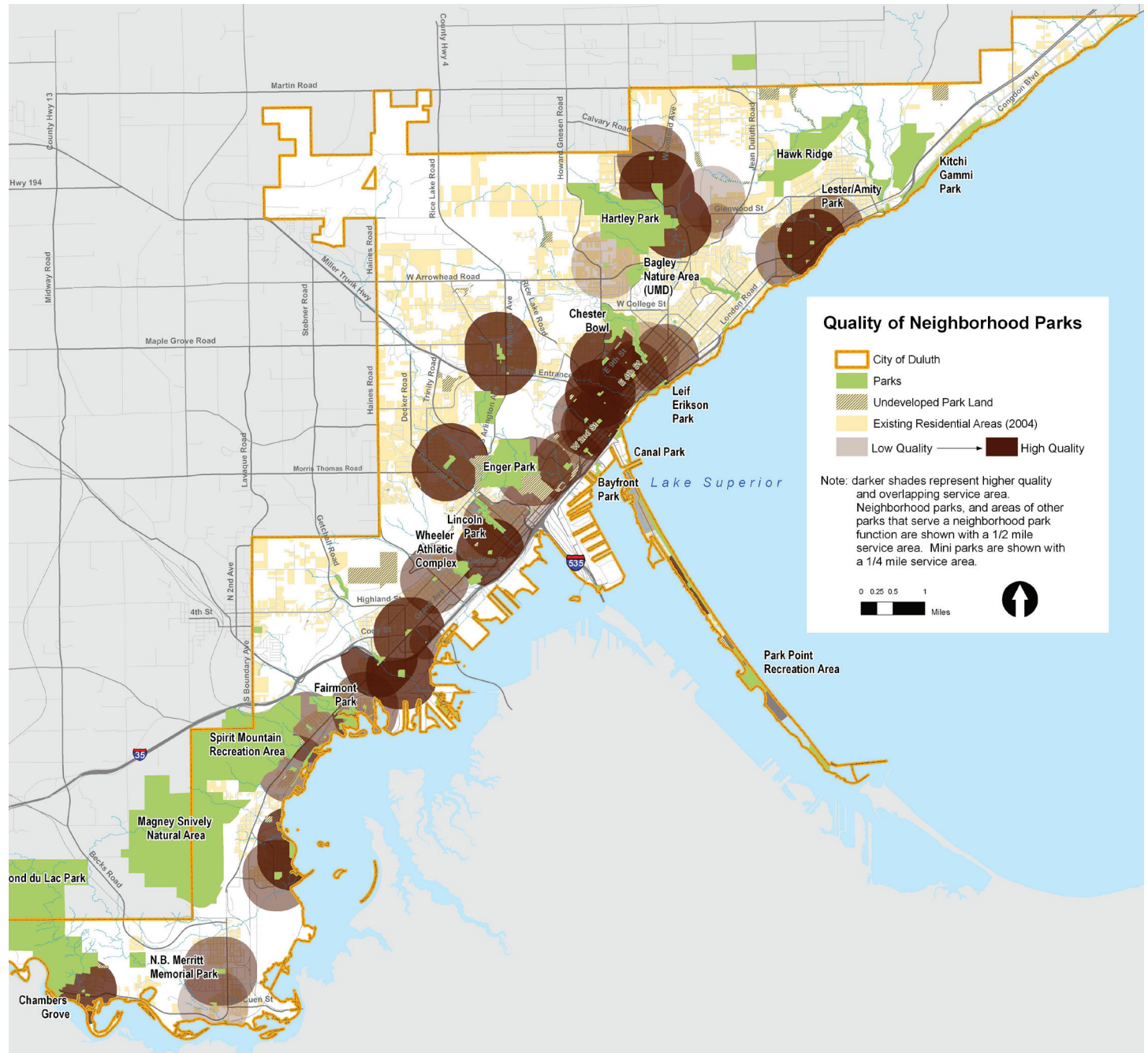
TRAILS

The map to the left, illustrates the existing trails and parkways in Duluth and their relationship to existing residential areas.

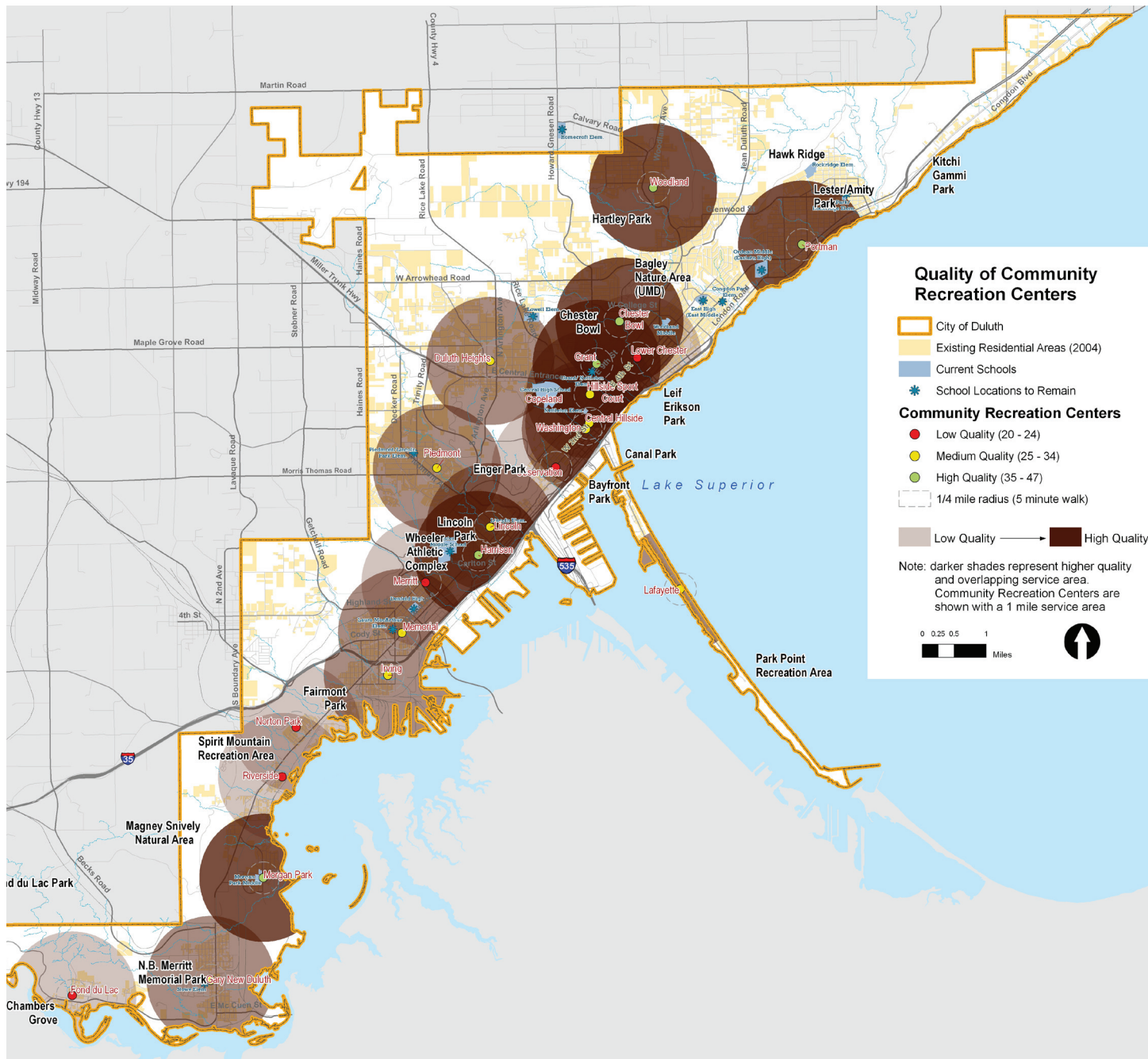
NEIGHBORHOOD PARKS

Level of service analysis for parks and recreation typically involves assessment based on quantity and distribution of facilities, but often ignores the quality of facilities. This distribution works well for growing communities, where facilities are new and, typically, high quality. But it only tells part of the story for a community like Duluth, with a wide variation in the quality of facilities. Therefore, to paint a more accurate picture of the level of neighborhood park service being provided to Duluth residents, a quality component has been added to the level of service analysis.

In the map at the right neighborhood parks were assessed based on five factors: park size, number of amenities, quality of amenities, and diversity of amenities.



COMMUNITY RECREATION CENTER BUILDINGS



Quality is depicted as gradient color: light brown indicates areas with lower quality service and darker brown depicts the highest level of service. Where service areas overlap, a darker shade is displayed, indicating that residents in these areas have a higher level of service because they have a choice of nearby community center buildings and therefore a higher level of service. The peach color indicates residential areas with gaps in recreation center building service.

In the map to the left the colored dots depict the distribution and quality of recreation centers city-wide. Recreation centers were assessed in 2008 based on seven indicators: condition, location, proximity to other facilities, usage, operating cost, programming and site factors.

PARK AMENITY INVENTORY

City of Duluth Park Amenity Inventory - updated 8/27/09

Site	Acreage	Pavilion	Picnic Tables	BBQ Grills	Playground	Bathrooms	Ballfields	Courts	Rinks	Trails	Gardens	Parking	Other Features
Central Hillside Community Recreation Center	2.75		5	2	T	F		BB			Y	25	Parks Office
Duluth Heights Community Recreation Center	5.02		2		K	F	S, So		H		Y	10	
Endion Community Recreation Center	2.00		2		K	F		T, BB			Y	20	
Fond du Lac Park Community Recreation Center	1.25		2		K		So	T, BB		H,B,Sn,Sk			
Gary-New Duluth Community Recreation Center	2.80				K	F	S	BB			Y	40	Skate Ramps
Grant Community Recreation Center	3.11		4		K	F	So, L	BB			Y		
Harrison Community Recreation Center	2.65		2		K	F	S	T, BB	H		Y		
Hillside Sport Court Community Recreation Center	2.50		4		K	F		BB			Y	3	
Irving Community Recreation Center	8.42		2		K	F	So, F	T, BB	P, H	H,B	Y	20	
Lafayette Community Recreation Center	1.83		2		K	F	S	T, BB		H	Y	10	
Lincoln Park Community Recreation Center	37.41	Y	12	7		F				H,B	Y	10	
Lower Chester Community Recreation Center	1.25					F			H				
Memorial Community Recreation Center	2.75		10	4		F	S, So	BB			Y	30	
Merritt Community Recreation Center	2.56		2		K	F	S	BB			Y	4	
Morgan Park Community Recreation Center	8.95		4			F		BB, B	H		Y	40	
Norton Park Community Recreation Center	2.99		2		K	F	S	BB			Y		
Observation Community Recreation Center	5.52		1		K	F	S	BB			Y		
Portman Community Recreation Center	2.75		8		K	F	S, So	BB	P, H		Y		
Washington Community Recreation Center	~~					F	indoor BB						Gym
Woodland Community Recreation Center	10.00		2		K	F	BB,S, So	T, BB	P, H	H	Y	200	
Birchwood Park	2.99		1								Y		
Blackmer Park	12.30		4		K	P	So				Y		
Cobb Park	5.00						So						
Como Field (Glen Avon)	5.00				K	P	BB					30	
Franklin Park (Beach and Playground)	196.00		2		T	P						20	
Lincoln Park	37.41	Y	12	7	K	F				H,B	Y	10	
Munger Landing	6.75					P						20	
Piedmont Ski Trail										H,B,Sk,Sn		15	

Site	Acreage	Pavilion	Picnic Tables	BBQ Grills	Playground	Bathrooms	Ballfields	Courts	Rinks	Trails	Gardens	Parking	Other Features
Portland Square	2.75		8	2	T, K						Y		Water
Stanley Park	1.11									H,B			
Wheeler Athletic Complex	29.11		40		K	F	So, B	T, B			Y	200	Skate Park
Baywalk	2.00												
Grosvenor Square	2.75		1		K								
Jollystone Park	0.80												
Keene Creek Park	10.60		4		K			BB		H,B		20	
Kenwood School Park	5.00												
Liliput Park	0.49		2	1	K						Y		
Cascade Park	2.75	Y	5	2	K						Y		
Michael Colalillo Medal of Honor Park													
Midtown Park	1.20												Skate Ramps
Morley Heights Park	1.17		4		Swings						Y		
Morningside Park	1.60		2								Y		
Munger Park	0.50		1		K								
Park Point	342.09	Y (2)	35	8	K	F				H,B	Y	385	
Rail Park (by library)	0.50											10	
Rice's Point Boat Landing	3.00											20	
Twin Ponds Park	10.00									H		20	Fishing Pier, Swimming
Wash,Burn Park													
Piedmont Community Recreation Center	12.25		2		K	F	B, S		H			10	
Amity Park	1256.61												
Arlington Athletic Complex	20.00					P	So					100	Soccer (3)
Bayview Forest Park	353.00				K								
Brighton Beach (Kitchi Gammi Park)	153.24	Y	28	12		P				H	Y	50	
Canal Park	2.00										Y	300	
Chambers Grove	13.00	Y	30	6	Swings	F				H	Y	25	
Chester Bowl	109.15		27	9	K	F	S, So			H,B,Sk	Y	80	Downhill Skiing
Civic Center/5th Ave W Mall/ Ordean Court	5.10					F					Y	40	
Enger Park	129.88	Y	13	4		F					Y	60	

Site	Acreage	Pavilion	Picnic Tables	BBQ Grills	Playground	Bathrooms	Ballfields	Courts	Rinks	Trails	Gardens	Parking	Other Features
Enger Park Golf Course	200.00					F						100	
Fairmont Park	56.21	Y	26	4	K	F				H	Y	200	
Fryberger Arena	5.00								H			200	
Grassy Point	71.00											4	Boardwalk
Hartley Park	975.00									H,B,Sk	Y	30	
Hawk Ridge	70.00					P				H,B	Y	60	
Indian Point Campground	26.99	Y	30	10		F				H,B		20	
Jean Duluth Soccer Complex							So (5)						
Lake Park Fields	20.00					P	BB					50	
Lake Place Park	2.50		2			F				H	Y		
Lake Superior Zoo	13.00					F					Y	200	
Lakewalk	3.14		6			F				H,B	Y	200	
Leif Erikson Park	19.19	N	4			F				H,B	Y		
Lester Park	306.81	Y	20	3	K	F				H,B,Sn,Sk	Y	60	
Lester Park Golf Course	152.65					F					Y	100	
Longview Tennis Courts	0.64		2			F					Y		
Magney/Snively Park	2775.50									H,B,Ho,So,Sk		30	
Oneota Forest Park	966.00									H,B,Sk			
Pennel Park	2.00		4	1							Y		
Pleasant View Park													
Rose Garden	4.40					F					Y	100	
Vermillion Park	2.50												
Waverly Park	2.21												
Western Waterfront Trail	40.00					P				H,B		40	
Chester Bowl Community Recreation Center													
Riverside Community Recreation Center	3.00		1		K	F	S	BB					
40th Ave E & Jay St	5.00											3	
42nd Ave E Lake Access	1.00												
43rd Ave E Lake Access	5.00												
Bayfront Festival Park	4.80	Y	16		K-Playfront	F			P		Y	DECC, DEDA, Playfront]	

Site	Acreage	Pavilion	Picnic Tables	BBQ Grills	Playground	Bathrooms	Ballfields	Courts	Rinks	Trails	Gardens	Parking	Other Features
Boy Scout Landing	0.93					P							
Brewer Park	41.31												
Buffalo Park	3.00												
Central Park	31.50			6						H	Y		
Downer Park	13.87												
Indian Park	0.76												
Johnson Park	0.52												
Kelso Park	1.25												
KelsoForest Park	10.00												
Lakeside Court Park	0.42												
Lakeview Park	5.16												
Lyman Park	2.72										Y		
Manchester Square	2.75												
Memorial Forest Park	163.00									H,B			
Moose Hill Park	80.00												
Old Main Park	5.00		1								Y		
Russell Square	2.75		1										
Smithville Park	6.09												
University Park	2.75												
Wade Sports Complex	22.50		10			F	So, B					300	
Wallbanks Park	0.85												
Washington Square	2.75		4		K						Y		
* picnic parks are in bold													
Key: Classifications													

PARKS AND RECREATION COMMISSION INPUT

The Duluth City Parks and Recreation Commission provided input at their September 23, 2009 meeting. The Parks and Recreation Commission was also asked to fill out a needs assessment survey.

Parks Commission Needs Assessment Questionnaire 9/23/09

Composite Summary of Responses

1. What parks, recreation facilities or open spaces do you or your family use in Duluth?

- Enger Park – Leif Erickson Park – Lakewalk
- Mission Creek Parkway, Skyline Parkway / Magney Snively, Ely's peak and Bardon peak areas, fishing areas along the St. Louis River, Spirit Mountain, the old DWP rr line, Western Waterfront trail, PSS, Memorial Park, Wade Stadium, Wheeler fields (mostly field #5) all of Park Point, Liliput Park, Arlington fields, Jean Duluth fields, Amity area, Lake Walk, Leif Erickson park, Lester Park, Piedmont MTB trails, Enger Park & Tower, various school fields, Chester Bowl and park, Bagley Nature Area, Hartley Park and Gitchee Gami park
- Jay Cooke State Park, Munger Trail, Western Waterfront Trail, Magney Snively, Spirit Mountain, Piedmont,

The Power-Line between Piedmont and Spirit Mountain, Lakewalk, Park Point, Chester, Hartley, Lester Park, The Informal Trails Between Lester and Hartley, Hawks Ridge, Brighton Beach, Scenic Highway, The Superior Hiking Trail, All the Cross-Country Ski Trails and The Formal and Informal Mountain Bike Trails that run across this great city.

- Local neighborhood parks, the Rose Garden, Enger Park Chester Bowl and open spaces to play sports.
- All – Lakewalk, Superior Hiking Trail, Munger Trail, Spirit Mountain, Chester Bowl, X-c ski trails, Park Point Beach, Brighton Beach

2. What is your favorite park or recreation place in Duluth and why?

- Lakewalk – fresh air, beautiful scenery, people watching
- Park Point because it's so distinctive
- Spirit Mountain - great total package as a recreational area
- Rose Garden – Beauty and setting
- They are all wonderfu



3. When you recreate outside of Duluth, where are your favorite places to go and why do you visit these places?

- Gooseberry Falls – same reasons as Lakewalk
- Forests for hunting and camping and mountain biking
- Lutsen for downhill skiing, Giant's Ridge for Downhill and Cross-Country Skiing, the North Shore for backpacking on the Superior Hiking Trail, and Ely for Canoeing and Wilderness Camping. Hayward/Cable and Woodruff/Minocqua for Mountain biking and Cross-Country Skiing. Keewanee Peninsula for Downhill, cross-country skiing, snowshoeing and Mountain biking
- Anyplace with a view and history behind it.
- State Park campgrounds, the North Shore and the family farm

4. What are the strengths of the Duluth Parks and Recreation system?

- We have a lot of open green spaces. The system is working well when its funded. The cooperative efforts between staff & the public.
- Amazing variety of activities and the amount of parks. I'm also impressed by the shape of the parks and their incorporation of unusual geography. Duluth parks have such a variety of options, shapes, geographies, and plants
- Beautiful topography and natural beauty.
- Wonderful views overlooking Lake Superior, They City, and the Bay. Great recreational opportunities for Hiking, Biking, and Skiing.
- Greenspace running virtually from one side of the city to the other
- The settings of the neighborhood parks, programs that are allowed in the parks, dedicated staff and accessibility to staff.
- Variety, ease of access and multi-use.

5. What are the top challenges facing the Duluth Parks and Recreation system?

- a. Funding
 - b. Maintenance
 - c. Staffing
- a. Budget and subsequent neglect of facilities
- b. Not enough staff
- c. Difficult for groups to get things done; bureaucracy and budget.
- a. Converting County tax forfeit land to parkland and for recreational purposes.
- b. Getting funding for facilities repair or replacement. Also, not much money available for new projects
- c. Developing a plan and sticking to it.
- d. Duluth's geography topography and combines to give Duluth additional expenses, complexities, and challenges while making it an attractive vacation sport for regional travelers.
- a. Funds to manage programs in parks and funds to maintain the parks.

- b. Maintenance and trash removal needs to be high on the priority list.
 - c. Summer and after school programs need to be reinstated and funded.
 - d. Adequate funding to sustain and maintain city parks for residents first and tourists second.
-
- a. Funding.
 - b. Staffing.
 - c. Maintenance, upkeep, and improvement of parks and facilities.



6. What recreation facilities or activities are lacking or need improvement in Duluth?

- Enger tower is crumbling
- After school activities that were cut due to budget
- Restroom facilities in parks
- An appropriately sized concrete skate park is our most glaring lack of park facility.
- Wade Stadium is the most pressing facility in need of improvement. Thousands of out of town fans visit Wade every year; they can't leave with a good impression based on that run down facility.
- Munger Trail needs to be connected through to the Lakewalk and the
- Lakewalk finished out to Brighton Beach and the Scenic Highway.
- Western Waterfront trail should be completed out to the entrance to Jay Cooke State Park.
- Multi-use single track trail that connects from Lester park all the way out to Jay Cooke State Park. Spur trails and additional loops could be added as appropriate.
- Superior Hiking Trail needs to be completed to Two Harbors.
- Bike Lanes or Bike Shareows should be added to some major 4-lane roads,
- Outdoor (and possibly some indoor) hockey facilities be made for summer use.
- Snowmaking for cross country skiing in the Spirit Mountain Campground loop and around the perimeter of the Chester Bowl fields.
- Improved low cost lighting added to the Spirit Mountain campground loop.
- Funding for after school programs and summer youth programs for all ages. Collaboration between city and school on buildings, sites and staffing .
- Youth programming! Summer and after school programs
- Meet unmet maintenance and repair needs in parks.

7. What should the top priorities be for the future parks and recreation system?

- » 1. Develop a sustainable funding strategy
- » 2. Enhance volunteer coordination and volunteer programs
- » 3. Expand recreation programs and activities
- » 4. Increase partnerships
- » 5. Enhance communication, promotion and marketing
- » 6. Other (please list)
- » Evaluate current Parks & Rec department from director on down, including us on the commission, and our role in the City. I do not mean this as expression of dissatisfaction with Kathy Bergen! The City govt. environment's changed drastically in a short time. It's time for a comprehensive examination of who we are, what we should (and shouldn't) do, and how to do it.
- » 1. Develop a sustainable funding strategy

- » 2. Greater park maintenance (address Parks Maintenance being a separate department from Parks & Recreation).
- » 3. Add new indoor athletic facilities
- » 4. Add new outdoor athletic facilities
- »
- » 1. Add trail connections
- » 2. Add new outdoor athletic facilities
- » 3. Enhance volunteer coordination and volunteer programs
- » 4. Increase partnerships
- » 5. Develop a sustainable funding strategy



- » 1. Develop a sustainable funding strategy
- » 2. Increase partnerships
- » 3. Enhance volunteer coordination and volunteer programs
- » 4. Expand recreation programs and activities
- » 5. Add trail connections

8. A challenge facing Duluth’s park system is balancing current and future maintenance and facility replacement with available staff and financial resources. Given the importance of parks and recreation for community livability and tourism, what suggestions do you have to address this issue?

- Marketing & Education to public of what’s available & what’s needed. Dedicating any park land and/or facilities sales to the Park & Recreation Budget. Create larger more active facilities in 3 or 4 areas of city & close others
- We should consider letting some parks go. Unless we can realistically maintain them, we should allow some wild or near-wild parkland to revert to nature. Lesser-used parks should be sold. The significant amount of green space and parks Duluth boasts is an asset. That asset becomes a detriment if allowed to crumble
- Add more primitive trails and that tie the city together with recreational ribbons of greenway.

Keep the trails multi-use for hiking, biking, snowshoeing ect... and design them for sustainability. Build the trails using volunteer labor provided by citizens and user groups such as Superior Hiking Trail Association (SHTA), Cyclists of the Gitchee Gumme Shores (COGGS), Duluth XC Ski Club (DXC), Duluth Area Trail Alliance (DATA), ect... Keep things simple and only move to more expensive trails when user volume requires and justifies it (i.e. Lakewalk). When new facilities are built design them to minimize maintenance costs and for sustainability. Employ adopt a park/trails program to give responsibility for periodic minor maintenance (brushing trails, garbage pickup, ect.) to park/trail users that regularly use the area. Remove unused, dilapidated (non-historic) structures and facilities so they are a constant eyesore and reminder of the plight of the parks.

- Neighborhood parks should be safe and have adequate facilities plus be maintained year round not just in tourist season.
- There will be a need for more reliance on volunteer effort to

provide programs and assist with maintenance.

9. Any other suggestions or comments regarding Duluth Parks and Recreation?

- Its is an extremely important part of life in Duluth and the Staff has done and is doing a remarkable job holding it together under current budget conditions.
- Though politically unpopular, a Parks Authority may be the way to go. Allow Parks to tax or impose fees adequate to maintain them. Duluth culture poses a difficult contradiction for City leaders. We want lots of parks, we want them maintained and we want new activities and facilities...but we don’t want to pay the taxes to do that. The City can’t afford to maintain basic infrastructure and core services. A parks authority may be a way around that.
- I think youth programs especially in the summer are very important to keep kids engaged and out of trouble. I don’t know at this point whether I think these programs are best provided by the Parks and Recreation Department or some other organizations such as the

YMCA, YWCA, School District, ect... If they are provided by the Park and Recreation Department I think they should largely be self supporting. Regardless of who provides them, I think they should be open to kids from low income households regardless of their parent's ability to pay because they probably need the programs more than anyone and a ounce of prevention is worth more than a pound of cure. I believe that it is cheaper and more effective to hire activity counselors rather than police officers and the end result will be far better.

September 23 Park and Rec Commission meeting notes

- The parks and Rec commission wants to be involved with this process as it evolves.
- St Louis River alliance should be contacted
- Wants to have trail head clearly marked on the plan/ with locations for parking
- Wants a 20 year vision
- This plan should be balanced throughout the city

- Wants to know what the costs to implement are going to be
- If a center is going to be closed they want to know the reason clear and concisely and want a cost report on what it would be to keep it running
- Be able to explain the whys of the decisions made on the plan
- This master plan will give the parks and Rec commission a tool for making decisions
- A tool for the public to work with the community leaders, create a standard program/
- Suitability should be included in the verbiage of the master plan
- The parks and Rec commission wants the information that has been complied form the survey
- They would like to review the survey before it goes out if possible.



FOCUS GROUPS

Four focus group meetings were held as part of the information gathering process. A focus group representing partner agencies was held September 23, 2009 and focus groups representing youth recreation program providers, trails groups, and Parks and Recreation staff were held on October 28, 2009.

PARTNER AGENCIES FOCUS GROUP

1. What trends (park, recreation, demographic or other) do you see affecting your organization/ jurisdiction that might influence Duluth's Park and Recreation system?

- Duluth trail alliance and the linkage to the trails
- Growth in adventure sports- kite boarding, rock climbing.
- Closer to home recreation opportunities.
- Use of time- people want to recreate and get to work.
- The question is how do we serve these different needs of park users.
- Minnesota trends- shorter trips to destinations, people want sports with less equipment
- Concerns that there is a drying up of resources and a lack of respect for public places.
- Place to walk dogs and use trails to get around

2. Identify planned park, trail and open space connections in Duluth and the surrounding area and opportunities for new connections and destinations.

- Duluth trail alliance has looked into connections. Their goal is to have 10-15 min from every house
- The high speed rail is coming to Duluth and connection should be addressed in master plan- through trail connections.
- Superior hiking trail.
- Connections east /west- along ridge and along lake but how do we create connection north/south
- Our top is a challenge
- Safe access walking and biking to work
- Complete streets approach
- Connections planed and needed for Hinckley to Grand Marias- Munger trail needs to be complete.

3. Identify any plans for new major recreation facilities that may affect the regional recreation market.

- Long range plan for the schools should be included with park master plan and should address connections for children. Maximize school and city properties/ programming and maintenance shared costs.
- Address the aging population and their needs/ transportation and routes important.
- Munger trail 2007 plan
- St Louis County did study in 2001
- City of Proctor did a connection study
- Herman town wants to connect to trails
- The new western school has a plan
- Superior has a plan for a 200' pier into Lake Superior 2010
- UMD- pool facility competitive as well as recreational
- New middle schools have plans for pools/ schools are considered public rec centers

- Spirit mountain is planning a zig-zag alpine coaster- open summer 2010-year round attraction.

4. What partnership opportunities would mutually benefit your organization/jurisdiction and the City of Duluth (maintenance, programming, shared facilities, etc)?

- Group users
 - » Duluth trails alliance
 - » Youth sport associations
 - » Adult sports associations
 - » City buildings rented- /example Hartley nature center
 - » YMCA expansion
 - » Chester park improvement club
 - » Exchanges between Superior and Duluth could save money/ share best practices.
 - » Duluthstreams.org
 - » Trailalliance@gmail.com
- Specialized sports- the more organized the better- example Douglas county fish and wildlife has an arrow course.

- Nurture relationships.- the more organized the group the better
- Exchanges between Superior and Duluth could save money/ share best practices.
- Share specialized use opportunities with other municipalities
- Local churches and their resources- i.e trail head parking
- College students as resources
- Marshall Students need volunteer hours to graduate
- AEOA- arrowhead economic opportunities in Hermantown- coordination



5. Do you have any other suggestions or ideas to better the City of Duluth's Parks and Recreation Master Plan?

- Quality vs. Quantity
- Has recreation opportunities close to home- walking creates greater ownership
- Create a tiered level system
- Student density and population- population has shifted neighborhoods are being redefined.
- Have a GIS component of the plan
- Information awareness- people of Duluth are not aware of all that they have
- As a system we are not good at capturing revenue from out public lands- take advantage of revenue opportunities.
- A volunteer coordinator is a needed resource to the parks.
- Using parks and public land for storm water detention
- Create a park dedication fund for any development
- Superior is now reduced their services and garden upkeep because of reality of budget cuts.
- Look for possible donations programs create a tree donation program.
- Analyze spend to see opportunities for funding.
- Analyze and look at project on a life cycle bases.
- Indicate a memorandum of understanding for any organize group that creates a specialized project i.e. a dog park of disk Frisbee course
- Shore fishing
- There is strength in image
- Look at what Seattle and San Francisco is doing about there topo challenges



YOUTH RECREATION FOCUS GROUP

1. What trends (park, recreation, demographic, fiscal or other) do you see affecting youth recreation in Duluth?

- Facilities (closure of facilities, lack of physical space/facilities, lack of maintenance, subletting to non-profit or other organizations)
- Staffing (reduced staff)
- Budget (reduced budget per capita, cost increase, scholarship reductions/drops)
- Closing of summer programs run by the City
- Parents enter their children in programs at younger and younger ages
- Influx of AmeriCorps (a type of Domestic Peace Corps) staffing/funding
- Balance of school and community partnerships (sharing school use time)
- Increased dependence on volunteers
- Physical space decline
- Transportation concerns (how to get to the sites, difficulties)

- Changing population trends (fewer youth in area)
- Decline in physical activities in today's youth (digital media, gaming systems)
- Dependence on organized functions to get kids involved in physical activities
- Imbalance of funds (Some sports may receive more money than others)
- Change in sport interests of youth (what may have been popular at one time, may not be in today's youth, same for future generations)
- Shift of funding from Parks & Recreation/City budget to individual organizations

2. What are the current roles of the City, school district, non-profits and others in youth recreation?

- Adult/Parental volunteers play a major role in thriving youth recreation groups/activities
- Parks & Recreation should have more of a role, but vastly under budgeted. Has moved to focus more

on the "Parks" side. Recreation has turned to more non-profit.

- City's role has dropped considerably, forcing more responsibility to non-profits and other organizations. Most youth programs are organized/run by non-profits (Is this unique to Duluth?) Also, they are to provide spaces & places for activities/meetings. City owns much of the property, schools and non-profits pick and choose who uses them. In charge of the spaces where activities can be held.
- School Districts – works well, offer spaces to community during certain times and manage facilities and fields, but may need to provide broader access to facilities
- Non-profit organizations are the basis for most youth recreation in Duluth. They are heavily based on volunteers which is an increasing need since funding has been reduced in many of them.
- AmeriCorps offers many (approximately 96 in region) youth services, mobilizes volunteers and staff persons. How long will this occur?

- Increase intergenerational programming (youth-seniors)
- 3. Are there gaps in current youth recreation program offerings? If so, how can those gaps best be filled?**
- Community/Neighborhood Centers (many are closed and not open for informal rec.)
 - Staff in general (from budget cuts, etc.) Could rec. centers be staffed by AmeriCorps and/or parents?
 - Neighborhood territorial issues (Example: some parts of city have more facilities than others)
 - Access to existing buildings
 - Communication (especially between management, maintenance, the public and the organizations using the facility)
 - Maintenance in existing parks and facilities (from budget cuts, neglect, etc.)
 - Transportation/mobility issues (many individuals do not own vehicles, hard to access site, etc.)
 - Programs available to middle school age youth (afterschool/weekends/easily accessible)
- Volunteer management/organization (many want to help but don't know what/where/how)
 - Facility gaps (either new or existing)
 - Budgeting (where the money is being spent)
 - Clarification of what City is involved in with youth recreation programs
 - Weekend programs/activities/groups available (especially free and accessible)
 - Broad community groups that would look at the "big picture" developments, ideas, needs for the Duluth area
 - Focus groups that involve youth (asking what it is that they need/would like to see)
 - Priority of use in facilities (adult/youth time use balance)
 - Open line of communication (city facilities with users/organizations/City)
- 4. Are there facility needs in the provision of youth recreation?**
- Public/Community pools (especially indoor facilities)
 - Baseball fields that can accommodate older youth dimension requirements
 - Indoor field house(s) (multi-use, can be used for soccer, baseball, track, etc.)
 - Soccer fields (especially in West Duluth)
 - Improvements of existing neighborhood fields
 - Outdoor multi-use facility (especially in West Duluth)
 - School facilities (especially gyms) are being maximized in use. Priority of youth versus adult recreation. Older youth often have priority over space, leaving younger youth/adults lacking facility use
 - Field/Facility use scheduling and coordination is needed
 - Incorrect/inappropriate field/facility sizes
 - Fixing up/restoring dangerous facilities that may be in disrepair
 - Broaden definition of recreation. Non-sporting event facilities such

- as theater, stage, speech should not be overlooked
 - Transportation to and from the existing/future facilities
 - Changing recreation trends (flexibility in the future)
 - Issues with multi-use facilities/fields
 - Communication to increase awareness of disrepairs, equipment needs/location, etc.
 - Have focus groups with youth to see what their needs/desires are
- 5. What additional partnership or volunteer opportunities would benefit youth recreation in Duluth?**
- Parks & Recreation could act as facilitator between all various non-profit organizations/groups, City and the public. Various individuals/groups/organizations would have a contact for questions, comments, or concerns. Help organizations do their role efficiently with more information and less competition. Get them in the same room so all are on the same page.
 - Web-based and/or Mail Community Calendars to view schedules and to reserve buildings/facilities, etc.
 - Increase communication within all parts of the community
 - Increase partnership of Park & Recreation, Facilities Management and Park Maintenance departments
 - Volunteer coordinator is needed. Organization of how to disperse volunteers who are eager to help out (i.e. Eagle Scouts)
 - Hands-On Greater Duluth (volunteer placement)
 - Duluth Youth Agency Coalition
 - United Way
 - Friends of the Parks
 - Adopt – a – Park (maintenance, programming etc. run by volunteers)
 - Duluth Transit Authority (DTA) create package that would tell youth where certain facilities are, how to get to them, what's available, etc. (similar to Yellow Book opportunities for Youth). Offer scholarships for DTA passes for youth
 - Schools could share space with rec. organizations. After-hour use or transportation opportunities (youth are brought to the facilities and just need to be picked up when through) Example: Brainerd and Cloquet YMCA Swimming Programs
 - Fit City Duluth
 - P&R/Advertisement possibilities. Show what's going on for youth and what the needs are
 - Increase partnerships with schools (sharing costs, after-hours use)
- 6. Do you have any other suggestions or ideas to better the City of Duluth's Parks and Recreation Master Plan?**
- How can the money be attained for new facilities/existing maintenance/staffing?
 - Duluth Winnipeg and Pacific (DWP) Railway land in West Duluth (tax incentives)
 - Brownfield land (tax credits)
 - Partnerships between outside funding (such as Minnesota Twins, Minnesota Vikings), City groups, organizations, etc.

- Limited tax base since approximately 1 in 6 households have children in the school district
- Volunteer hours are free but they must attractive opportunities with goals in mind
- Bond referendum (not hugely popular, but if advertised in the right way and more specific on where money would go, it may be a viable option)
- Increase cost to use facilities (but many cannot afford this, but would be willing to volunteer time, help, etc.)
- Use percentage of sales/property tax towards Parks & Recreation/Non-profit activities
- Partnership with SMDC, targeting youth (preventative health care through physical activities) Example: Just Do it Campaign
- License/Pass fees (may lead to decline of usage for certain facilities/spaces)
- Preventative approach (more money into youth activities, less money needed for juvenile patrolling, crime etc.)
- More organizations/activities offered the more people are willing to volunteer/donate funds
- Balance the amount of maintenance money being spent on “tourist” places with local community parks/facilities
- Trace where tourist money is going (much of it is going into City of Duluth’s “general fund”)
- Add youth participation fees (but asking for fee waivers is an issue for some)
- Group that leads the Master Plan needs to be diverse; containing many different organizations/groups allow with City members
- Position City to Partnership between Parks & Recreation Department (let them know that there is inadequate funding and what we can do to help)
- Increase awareness of the Master Plan and Parks & Recreation Department with City and the public.
- Youth organizations have picked up budget deficit slack for the City but reduced funding if predicted in the near future.
- Community Centers are vital for organizing where volunteers can be placed.
- When there is a lack of funding in a community and active members leave to other communities, it causes a “domino effect” which leads to a decline in volunteering, community pride etc.
- Educate the public on what it actually costs to run some programs (such as insurance, liability, transportation, facility utilities) so they understand how much it costs to maintain an organization/facility.
- Focus on prevention rather than reaction. (Youth are the future!)

TRAILS FOCUS GROUP

1. What are the strengths and weaknesses of Duluth's current trail and bikeway system?

STRENGTHS
Lots of natural surface trails for hiking, skiing and mtn. biking.
Superior Hiking Trail and City trails that tie to it
Lakewalk
Lighted trails for cross country skiing
Lots of trail advocacy groups
Lots of volunteer trail maintenance for rustic and natural surface trails
City is largely pedestrian friendly with trails and sidewalks.
Terrain and views
Outdoor oriented population and lots of avid trail users
The Munger Trail

WEAKNESSES
Lack of connections between trails within Duluth and from Duluth to adjacent communities
Lack of trail system maps, way-finding signs or kiosks. The few existing signs are not uniform.
City is not bike-friendly. Few paved trails, no bike lanes, no sharrows (marked shared bike and vehicle lanes) and only a few signed bike routes
Use and future status of existing trails on County tax forfeited land
Lots of informal and unauthorized trails
Need to streamline the trail construction process i.e. with the County
The Mall area is not bike or pedestrian friendly.
Storm water runoff is causing erosion damage to some trails
Some use conflicts with unleashed dogs on trails.
Skyline Parkway gets lots of use by walkers, runners and bikers, but it can be unsafe.
Need to complete the Munger Trail into and across the City
Many people are unaware of the trail opportunities and locations in the City.

(41)

COMMUNITY
INPUT

2. Where are trail or bikeway connections needed or trail improvements needed?

- Add sharrows (shared bike/vehicle lanes) on Kenwood, Woodlands and Arrowhead.
- Chester Park - Kenwood to the College.
- Continue to extend the Lakewalk.
- Morgan Park to Bardens Peak on County land.
- Follow the Comp Plan trail map and priorities.
- From the Piedmont area - more connectivity needed.
- Owatonna Street to Lester – double track road.
- Brewer Park – Keane Creek to Hermantown.
- Spirit Mtn. west to Jay Cooke.
- Old Quarry to Brewery Park.
- Abandoned DWP line needs help.
- Mission Creek Parkway needs improvement.
- Mow the snowmobile trails in the summer.

- Finish the Western Waterfront Trail to Fond du Lac.
- Skyline Parkway – Create and “activity lane (wide marked should for ped and bike use) Make it plowable.
- Plan for a future trail through the antenna/Tower Hill area.
- Harden the trail in Magney Snively – protect from erosion.
- Create beginner mtn. bike trails. Few places now to take young kids or beginners as existing trails are more difficult.
- Build the trails to handle the volume.→
- Create a water trail up the St. Louis River.
- Need better road maintenance to improve bicycle safety.
- Add campsites along the Superior Hiking Trail w/4H or Boy Scouts help.
- Repair the trail in Lincoln Park damaged by the W 9th Street sanitary line.

3. How can new trails and bikeways be funded?

- The City should have a Trail Coordinator/Volunteer Coordinator to effectively use the energy and resources from the advocacy groups and interested citizens and businesses. Organize the diverse groups efforts.
- Utilize volunteers even more for building and maintaining natural surface trails.
- Hold trail fund raising events.
- Involve kids in trail building and maintenance.
- Adopt a trail program.
- National horse trail group has funds for horse back trails.
- DNR Grant Program.
- State Legacy Funds.
- Coastal Commission.
- Have a trail dedication fee from new developments.
- City should budget more money for new trail construction.

STAFF FOCUS GROUP

1. What are the strengths and weaknesses of the Duluth Parks and Recreation system?

STRENGTHS
Lots of parks and green space
Variety of outdoor recreation amenities
Multi-season activities
Water - lakes, river and creeks
Collaborative relationships with other organizations
Outdoor recreation and nature orientation City residents
Volunteer commitment
Strong role park sand trail play in tourism

WEAKNESSES
Lack of staff and funding
Lack of a clear direction
Change and cutbacks over the last few years have disrupted partnerships
Lots of change in the school system and across Duluth
Decaying park and infrastructure
Lack of funding to keep up
Internal communication could be improved
“Silo” mentality (slowly changing)
Being re-active instead of pro-active
Park and recreation benefits not understood/appreciated within the City government. Not viewed as core service



(43)

COMMUNITY
INPUT

2. What are the top challenges facing the Duluth Parks and Recreation system?

 - Vision, funding, staffing.
 - Park and building renovation and upgrades.
 - Recreation buildings are not very usable.
 - Achieving ADA compliance in buildings and facilities.
 - Getting buy-in from other City Divisions.
 - Balancing the tourism vs. resident focus in maintenance and provision of services.
 - Getting bathrooms and drinking water in parks.
 - Recreation center building removal/renewal.
 - Renovating Washington Center.
 - Providing service to those who cannot afford fee activities.
 - Balancing Quality vs. Quantity and the need for access to facilities and programs.
 - Create schools as shared public recreation and social spaces.
3. What recreation programs or activities are lacking or need improvement in Duluth?

 - Need for free events and recreation program coordinator to work with non-profits, write grants, do scheduling and oversee programs.
 - Improving communications and awareness.
 - Less structured summer programs for kids.
 - Activities/programs for active seniors.
 - Senior programs are dwindling while senior population is increasing.
 - Programs and access for people with disabilities.



(45)

COMMUNITY
INPUT

COMMUNITY OPEN HOUSES

INPUT RESULTS - DECEMBER 2009

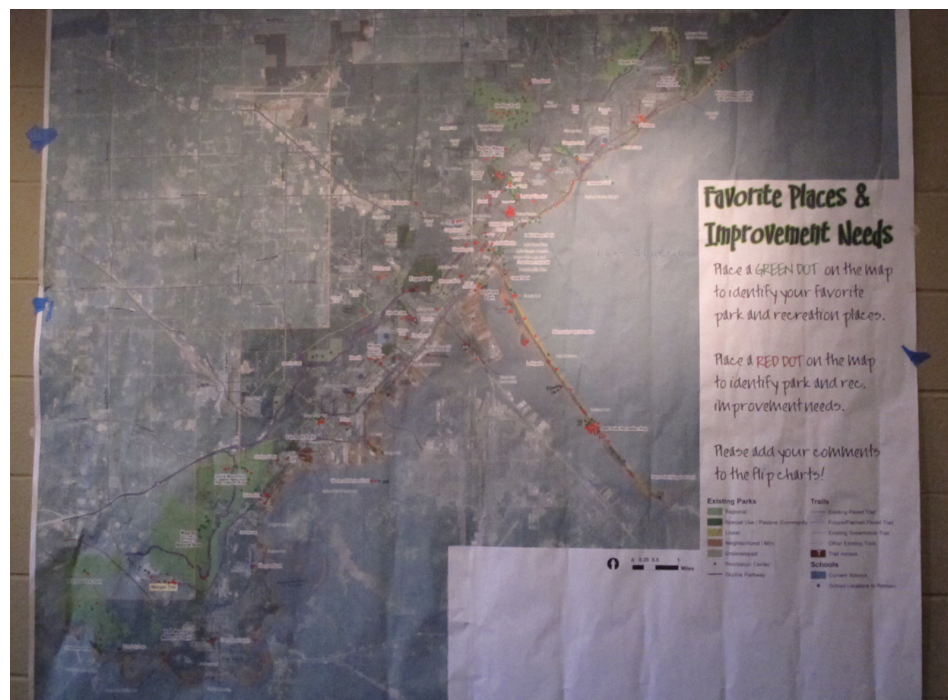
Community input meetings were held:

- Wednesday, December 2
 - » 6:30 - 8:30 PM Central Hillside Community Center
- Thursday, December 3
 - » 11:00 AM – 1:00 PM Duluth Union Depot
 - » 6:30 - 8:30 PM Portman Community Center
- Tuesday, December 8
 - » 6:30 - 8:30 PM City Center West

Approximately 130 people attended four community open house meetings held December 3rd, 4th and 8th 2009 to gather input on parks and recreation needs and ideas for the future. Attendees were given three ways to provide input:

- Participation in Favorite Places Exercise where they were asked to identify their favorite parks and parks where improvements are needed.
- A board where they could post ideas and suggestions.
- A written questionnaire.

The following is a summary of the Open House input.



Favorite Places and Improvement Needs

Favorite places and improvement needs identified on a park system map were scattered throughout the park system but the following favorites emerged.

- Top favorite places identified included Chester Bowl and Lester/Amty Park.
- Other popular places are Hartley Park, Hawk Ridge Park, Congdon Park, Hartley Park, Magney/Snively and Fond du Lac.
- Park Point Recreation Area and Kitchi Gammi Park were areas identified both as favorite places and as needing improvement.
- For smaller, neighborhood focused parks Keen Creek Park and Lincoln Parks were identified as favorite places and as needing improvements.
- Portman and Portland Square were identified as needing improvements.
- Favorite Places specifically mentioned include: Amity Creek Watershed, Congdon Creek Park, Enger Tower, Hartley Nature Center,

Hawk's Ridge, Kitchi Gammi Park (2), Lower Chester, Magney-Snively Forest, Park Point, Park Point Pine Forest, Piedmont bike and hike trails, Portland Square, Rose Garden, Russel Square, Seven Bridges Road, Washington Square, neighborhood parks, all Parks with trails for cross-country skiing, biking, running, and mountain biking, bike lane to Lakeside.

A list of improvement needs noted by participants on flip charts follows.

Park Upkeep and Renovation

- More bathrooms (2).
- Maintain/improve soccer fields for intramural league use (2).
- Better trash collection / more garbage cans. Recycling in parks is needed.
- Better upkeep for community centers and neighborhood playgrounds.
- Ski trail grooming – is appreciated and noticed when it doesn't happen.
- Preventative maintenance is needed.

- Chester Bowl- needs to be staffed by the City.
- Expand dog Park in west Duluth.
- Hartley Park – cross country ski trail signage needed; make an ADA accessible trail through the park.
- Norton Park – better field and ice rink upkeep.
- Park Point Recreation Area – preserve public access to beach; more bathrooms/bathroom access.
- Portman Square - grills need to be replaced.

Funding and Staff

- Jobs program.
- Funding for staff and maintenance.

Partnerships

- Coordinate with schools more.
- Reinstate volunteer park trail "rangers".
- Utilize/better follow-through with volunteers (3).
- More information of the City's website with a link to Visit Duluth.

Equitable Access

- Staff for after school and summer programs. Current programs are too expensive.
- Youth programming at neighborhood centers.
- Connect kids with parks via transit, bike and walk in low mobility neighborhoods.
- Universal design needed across the system.

Connectivity / Trails

- Continue to make bike commuting easier with more trails and bike lanes (3).
- Bike lane/traffic calming on 1st, 2nd and 3rd Streets.
- Connectivity of the parks and trails systems especially to the hillside (3).
- Skyline Parkway needs to be safer for pedestrians and cyclists (2).
- Link to superior hiking trail needed from Enger Park to Chester Bowl.
- Trails need improvements.

Park Land and System Management

- Improve the process for making improvements (skate park).
- Concern about over-development of parks.
- Preserve Amity Creek Watershed.
- More parks & more land preserved. Be sure preservation for parks is a clear city priority.
- Invasive plant control (2).
- Preserve Tallus Island as a conservation and recreation area with access to the river/interpretation.
- Preserve Baywatch Park for Birding with parking and trees. Do not give it to the Boat Club.

Facility Needs

- Transient boat slips.
- Add Dog Park in East Duluth.
- Lighted tennis courts in west Duluth (2).
- Lighted Nordic ski trail in west Duluth or Piedmont.



Ideas and Suggestions

Park Upkeep and Renovation

- Consolidating rec centers (one for sports complex, one for senior social, one for youth recreation, etc.)
- More trash containers in parks.
- Maintain parks, playgrounds, open restrooms (year-round).
- Smoking and trash pick up.
- Benches along trails.
- Bathrooms/port-a-potties at Dog Park, Park Point.
- Dog poop bags at Grant Park.
- Voyager Trail, West side running trail.

- Memorial bldg—when it is torn down, will there be a concession stand and bathrooms by the softball field?
- Woodland Softball—if the little league field is expanded, it will wipe out the softball field
- Lighting on Piedmont trails
- Continue to groom Lester for skijoring maybe twice a week.
- Turn Chester Park Nordic trails into a dog trail and put more into Piedmont.
- What is future of Rockridge site? It is now a very important soccer field and practice area, also good open space.
- No littering sign—Piedmont Trail. Add trash can in parking lot.
- Bring back the bowling green at Observation Park (Scottish lawn bowling).
- Observation Hill needs an open restroom, better playground, and summer staffed programs
- Restore Franklin Park back to a full beach without dunes.
- Chester Bowl—don't close—200 skiers plus families
- Finish the design of Central Hillside Community Park according to its original plan
- Find the creek in Cascade Park that was covered and uncover it—move Mesaba Ave out of Cascade Park
- Bring back Cascade Park closer to its original plans.
- Mission Creek/Fond du Lac Forest needs management plan—too much erosion along trails; remaining historic bridges should be preserved. Good area for hiking.
- View preservation—Skyline Drive
- Make Skyline Parkway safer for bikes and peds
- A vegetation plan for Skyline Pkwy
- Develop standards for Skyline pkwy buildings and protect existing open space
- Reduce speed limit on Skyline Pkwy to 25 mph. Restrict some vehicles.
- Mission Creek—old Skyline Parkway Bridges
- Model original vision (from 1890s) with Skyline Pkwy as key element in a linear stream of parks.

Funding/Staff

- Can money from Minnesota Ski Pass program be diverted or returned to Duluth Parks?
- Funding: grants, events (marathon), volunteers (Judy Gibbs was awesome).
- User fees for Park and Rec are not good.

Partnerships

- Make all programs volunteer operated—give people ownership. (2)
- Improvements to / Communication / Collaboration between city and volunteers.
- Post notices when parks are not city maintained and connect volunteers to efficiently enable volunteers.
- Overall volunteer coordinator.
- Prisoner maintenance.
- Students maintain parks (give credit).
- Senior gardening/clean-up programs.
- Cooperate with area colleges for buildings and facilities.

- Tap into baby boom generation for volunteers.
- Use volunteers—ie. Duluth Area Trails Alliance—to build trails.
- Organize a volunteer department to maintain parks.
- Provide incentives to volunteers (tax breaks).
- Partnerships with health insurance—breaks for volunteers.
- Clean up our creeks in the parks and get volunteers to keep it that way.
- Name tags for trees and plants in parks—coordinate with schools and nature centers.
- Encourage community involvement (Wild Ones?) in planting wildflowers and native shrubs, trees.
- Partnerships for programs (UMD, Boat Club, etc.).
- Have Americorps positions for parks staff more often (ie. Hartley Nature Center).
- Invite U.S. forest service personnel to help with design, plants, usage.
- Post maps/signage/info about all parks that are in Duluth, in Canal

- Park.(ie. For tourists to learn about trails and parks around the city)
- Put link to web survey in newspaper.
 - PACT TV—monthly show. Partnerships for promotion—televise activities on active living
 - Make connections between park system and tourism industry. (ie. Mountain biking)

Equitable Access

- Youth programming! (2)
- Regional parks with Hermantown, Proctor in Mall area.
- Recreation opportunities for low income families ie. Mobile art trailer, Team sports that last a weekend, Nature hikes.
- Specialized activities/build relationships/bridges across income/ability (ie. Chester Bowl).
- Plan activities for neighborhoods in the parks.
- “Go to Source”—Hartley Nature Center needs help giving programs away for peanuts; ski and snowshoe rentals for cheap.

- “Mobile Recreation”—urban wilderness camps & naturalist-in-residence program.
- The most critical facilities to improve are in low-income neighborhoods.
- Washington Center and the Hillside Parks need to be staffed, redeveloped and maintained (for low income kids).
- Universal design / ADA accessible in all parks. (2)

Trails/Connectivity

- Connectivity! Green corridors and ped transit corridors (2).
- Safe ped/bike transport from all neighborhoods to parks and trails.
- Trail connectivity.
- Harbor Walk—access for pedestrians to get to Superior and back (Blatnik Bridge?).
- Don’t pave the parks/trails—keep working with COGGS.
- Access to river in west side—Irving Park, Riverside, Morgan Park, Fond du Lac (see Mindy on this one).
- Connect parks via public walkways—work with Fit City Duluth.

- Improve safety on ped connection from downtown to canal park (via Lake Ave bridge).
- Improve trail heads and trail access; signs, interpretation, parking, bike racks.
- Etiquette on trails.
- Reclaim access alleys and avenues along Minnesota Ave that used to provide public access to our beach.
- Make the mall area more walkable and bikeable.
- COGGS Trails with distances on maps.
- Camping along Superior hiking trails—Hartley Park.
- Put some focus on Superior hiking trail.
- Make intentional connection between Heritage Sports Center and Wade, Wheeler, Harrison and schools.
- Congdon Park trails can continue to lake on university land.
- When ATV riders are caught riding off-road on natural areas that can be damaged, it should be public record; harsher penalties to repair damage to trails.

- Promote kayaking and create waterway along the North Shore—all the way to Apostle Islands—campsites and lockers for kayakers.

Park Land and System Management

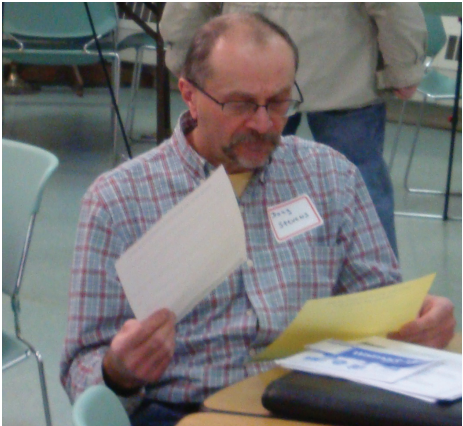
- Get county to release land for Piedmont Recreation area (2)
- Stop the loss of the 19th Street Baywatch Park (2)
- Let Natural Areas be Natural Areas.
- Preserve open space should be #1, Facilities should be #2.
- Citizen science opportunities for local residents to get involved in monitoring and stewardship of parks.
- Preserve Tallus Island as a natural area.
- Preserve informal open space, especially Amity Creek watershed.
- Maximize re-planting native species to address wildlife, maintain biodiversity, benefit the birding experience.
- Need to aggressively control invasive vegetation.

- Better control of problem dogs at dog parks.
- Post poison ivy on park point trail.
- Require new developments to include parks—conservation subdivisions.
- Take some park space and make it available for townhomes—dense, high-quality housing adjacent to parks.
- Do not sell waterfront to private developers—it should be public.
- New development in Duluth should come with one percent for parks.
- Purchase the auto parts store on East 4th St. on Chester Creek—make it a park facility.
- Increase park lands—tax forfeited lands provide opportunity—and add passive parks.
- Parks need to be designated (ie. Protected).
- Preserve stonework in retaining walls and buildings in Duluth Parks.
- Ideas from other cities—Portland, Oregon—Duluth needs more ideas!
- Plant trees in parks, replace wildflowers.

- St. Louis River corridor plan should be part of the overall parks vision.
- Importance of trees for water protection, as well as their aesthetic importance.
- Constantly monitor water quality in the creeks in the parks.
- Develop a place for transient boats—mixed use development.
- Kayak/Canoe racks for rent near water.
- Dedicated central facility for all water activities (ie. At Park Point).
- Fairly well—needs a facelift. (8)
- Moderately well—I mostly use trails and the lakefront. (9)
- Good assortment (7)
- Very well, Great parks scattered across the city (20)

Facilities

- Buy central tennis courts and light them. Put a bubble on it.
- Light tennis courts in West Duluth.
- More dog parks/Better enforcement of leash and poop regulations/designated dog runs in every large park area
- Usable decent tennis courts not near a skate park.
- Skijoring lit trail.
- Youth athletic facilities in West Duluth. (ie. Soccer fields)
- Add ski runs, bike trails, snowmobile run, 10-mile track for racing cars.....
- Demolish poor quality rec centers and replace with open-sided shelters.



Questionnaire Responses

- 1. How well does Duluth’s park and recreation system (parks, trails, recreation facilities, park maintenance, recreation programs, etc.) meet your needs?**
- Very little (3)
 - Fine—just let public know what we have.

2. What are the most important current and future park and recreation needs? (i.e. park or recreation improvements, maintenance, programs, communications, actions, etc.)

Park Upkeep and Renovation

- Better maintenance and upkeep/use of facilities.(14)
- Restrooms for the whole season in more utilized areas. (Park Point) (8)
- Cleanliness and Safety. (2)
- Improved playground equipment. (2)
- West side needs lit ski trails and skate trails.
- Recycling.

- Prioritize facilities that should remain open and be repaired and those that should be closed.
- Lincoln Park Rec Center needs to be reopened with activities for children & adults—skating, softball. Etc
- Enhance the outdoor parts of parks.

Funding and Staff

- Staff! There is no substitute for people. (3)
- Steady funding.
- Keep Chester Park operational—over 200 skiers with family support
- Create a Trails division within Park & Rec.

Partnerships

- Professionally coordinated volunteers (4)
- Better signage. Trail maps clear and easy to find. (3)
- Communication: make clear the approved uses for each trail. People need to know what each trail or park can be used for. (3)

- Need to better mark Skyline Parkway and market it to tourists.

Equitable Access

- Youth programming. (9)
- Recreation opportunities for youth in West Duluth. (2)
- Programs that serve diverse populations. (2)
- Senior programs.
- Create a park system that is affordable and useful for the majority.
- Idea: Survey actual park usage—real #s to plan current and future needs.

Trails/Connectivity

- Connect parks by trails. Run trail along waterfront length of Duluth. (7)
- Wild trails are needed for hiking and walking (not snowmobile & skis) (5)
- Ensure access to foot trails for recreation and commuting. (2)
- Connect schools with parks.

- Accessibility (to playgrounds) by foot.
- An inter-linked/sustainable and purpose built mountain bike trail that could be promoted for both tourism and local riding would make Duluth a much better place.
- Mandatory sidewalks on all new built roads, (ie. Menards).

Park Land and System Management

- Environmental protection—less emphasis on flowers and turf grass. (3)
- Invasive species control.(2)
- Retain informal park spaces like Amity Creek that families depend upon. (2)
- Developed park land in mall area. (2)
- Keep development away from natural areas. (ie. Airport) (2)
- More protected land—passive parks.
- Retain all land even if not currently used, especially any lakeshore or other vistas (no more condos like those on Water Street).

- Mixed use waterfront—look to other Great Lakes cities ie. Racine, Sheboygan, Niagara, Ontario

Facilities

- A facility for the Duluth Boat Club—for all to come and learn about and try water sports. (3)
- Tennis courts.
- Rock climbing.
- Better access to water sports for all, especially our youth, capitalize on our beaches. (6)

3. What should Duluth Parks and Recreation be like in the future? (vision for the park and rec. system)

Upkeep and Renovation

- Maintain what we have—use offered volunteers for maintenance. (7)

Funding and Staff

- Operate from a dedicated fund used only for park purposes—look at a Park Authority. (2)

Partnerships

- Collaboration with other programs, such as UMD-Outdoor, CSS-Outdoor Pursuits, Duluth Boat Club. (5)
- An organization that is a hub for promoting active healthy lifestyle choices for all ages and abilities. (3)
- Advertise park systems. (2)
- Duluth is a tourist destination for its amazing parks and recreation opportunities. (2)
- Have a vision and follow through ie. Frederick Law Olmstead in Mpl. (2)
- Active citizen participation and financial support.
- Ensure that systems approach to recreation provision is active and accountable.
- Forward thinking organization—looks at new and up and coming sports and the needs they require.
- More willing to work with all user groups, if they agree with the use or not.

Equitable Access

- More opportunities for youth programming. (5)
- Program opportunities for all ages: youth, college, and senior. (4)
- Have educational and community building activities. (2)
- Access to safe, usable outdoor space for all families and residents of Duluth, ensure equity. (5)
- Equalize West Duluth with central and east Duluth.
- Neighborhood after-school programming.
- Please do not forget the suburbs—this is where the majority of taxpayers are.
- All neighborhoods would have access (by foot) to recreation facility/ greenspace.
- Signature park idea—BAD. Smaller neighborhood parks—GOOD. Shift \$ from smaller parks to focus improvements on bigger parks—BAD.

Connectivity/Trails

- Connected system of parks & trails. Be able to bike from one end to other off busy streets. Commuting & Transit options.(8)
- Bike lanes on our streets, bike trails. (2)
- Close down city streets on Sundays to bikes and pedestrians.

Park Land and System Management

- Maintain high quantity of natural areas and consolidate traditional parks. (4)
- Protect environment.
- Parks should be spun off from Recreation.
- Keep green space available for future use.
- General walking-hiking-picnicking should remain free.

Facilities

- More lit trails, security. (2)
- Promote urban gardening on public land. (2)
- Build new facilities.

- Consolidate facilities.
- Water-based Recreation.

4. What should be done to achieve the desired future for parks and recreation? (suggested short-term and long-term actions/priorities)

Upkeep and Renovation

- Focus on quality over quantity. (3)
- Remember that Duluth's park system has made it a great city—maintain this. (2) Improve athletic fields.
- Any construction should be green and sustainable-minimal maintenance.
- Fix Skyline Drive.

Funding and Staff

- Create Park District with taxing authority—a persuasive campaign to convince local business that parks are good for bringing in quality work force (ex. Heritage Center in the west end). (4)
- Grants. (3)
- Institute a municipal income tax dedicated to pay for parks and youth programming. (3)

- No additional parks/buildings since city can't maintain what we have. Exception—if funds are raised for specific park use. Need better method to allow fundraising—problem raising funds for dog park due to private/city complication.
- Create a design plan for each park, then get financial support from community residents and businesses.
- Revenue streams must be from user fees—not everything P&R can be assumed to be free.
- Find a sustainable funding source other than the city.
- Stimulus money?
- Temporary worker program.

Partnerships

- Partner with nonprofits and groups for maximum involvement, use and care. (8)
- Use volunteers—do not refuse their help as is now the case. Take ownership of parks with volunteer maintenance (SHTA & COGGS) (6)

- Connect the dots that exist in the community. We need solid leadership from the P&R dept. (4)
- Community efforts/events. (2)
- Multi-use buildings with schools/libraries/non-profit partners. (2)
- Education, trails, and natural surface trails (can be built by volunteers). (2)
- Fundraising programs involving community members.
- Train teachers and public organization representatives in how to make use of their nearby parks and encourage them to get kids out year round.
- Include students of all ages in park planning decisions and maintenance.
- Set aside funding and get user groups to adopt sections (ie. Duluth Hiking Trail & Snowmobile Clubs).
- Private companies sponsoring parks/activities (my business sponsors a non-profit that teaches kids kayaking, rock climbing, dog sledding, etc.).
- Complete this plan with broad community support.
- The meetings are a good start—it's great you're asking for public input. (4)
- Give more opportunities for people to 'buy into' their parks—provide info to new residents showing parks in their area & programs available and info on trails and Skyline Pkwy. Too many long-term residents don't know what is available.
- Publicize them, categorize by use.
- Provide us with a clear, logical master plan, with specific steps to achieve, pay for and maintain.

Equitable Access

- Increase programming. (2)

Connectivity/Trails

- Skyline Pkwy should be like Minnehaha Pkwy in Mpls, linking parks and creating a corridor.(2)
- Bayfront development that ties the community.
- Connect Hartley-Bagley (UMD)-Chester.

Park Land & System Management

- All St. Louis county tax forfeit lands and undeveloped city lots should be evaluated for park expansion or corridors for connection. (4)
- Public education/public responsibility. (2)
- Protect viewshed along Skyline Parkway. (2)
- Master plan should coincide with Comprehensive Plan.
- Don't sell land/resources.
- Protect informal park and trail system through zoning.
- Use conservation easements.

Recreation Facilities

- Provide athletic activity facilities for youth leagues, year-round.

Other Suggestions/Comments

Park Upkeep and Renovation

- Do not waste money on unnecessary expensive kiosks as was put in Keen Creek Dog Park—that money could

- have been better spent on gravel for better drainage.
- Create activity centers throughout the park system—each park would have a dedicated activity center.
- Please do not destroy existing park buildings that have historical and architectural value—these buildings can't be replaced.

Funding and Staff

- Funding: small source—if City used less chemicals in winter, especially on flat streets like Minnesota Ave. Result: less spent, less pollution.
- Grants, etc. for special programs.
- Create a “Duluth Corps” that cares for and creates programming in parks (similar to MCC or Student Conservation).
- Rehire Judy Gibbs.

Partnerships

- Get local groups together and have work priorities and work days. Develop interaction between user groups.

- Have a website that citizens can become informed and provide ideas.
- Can enclosed buildings be rented more for reunions, weddings other special events?
- Duluth has great tourism/visitor potential—should be more of a hiking and outdoor adventure travel destination.
- Work with Minnesota Land Trust and Nature Conservancy to protect more land.
- Help our Skyline Preservation Alliance restore Mayor Snively's Memorial on Magney Skyline.

Connectivity/trails

- Create ‘City Parks by Bus’ brochure that shows how to reach major parks like Hartley or Chester Creek using the bus system.
- Insist that all road improvement projects are pedestrian/bike friendly.
- Sharrows on major roads that can't support dedicated bike lanes (especially going uphill)
- Bike pathway on Skyline Pkwy

- Interconnectivity—both paved trails and natural surface—throughout the city. Make schools and routes to them pedestrian/bike friendly.
- Consider backpacker camping in some City parks along Superior Hiking Trail

Park Land and System Management

- Preserve open space
- It took 3-4 months to paint the Irving Community Center—it should have only taken 1-2 weeks. Accountability in the system?
- Coordinate with other planning efforts, like ‘At Home in Duluth’ neighborhood plans
- Pay special attention to dense urban areas to provide playgrounds, open space, walking & bike connections
- City needs clear process for dedicating parks.
- Look at the Thunder Bay development—What do we do to attract young professionals?

Facilities

- Establish a wild area dog park. (2)
- Support youth soccer field expansion.

INPUT RESULTS - AUGUST 2010

A community input meeting on the Draft Park and Recreation Master Plan was held:

- Monday, August 23
 - » 6:30 - 8:30 PM Central Hillside Community Center

Approximately 40 people attended the Open House. Numerous other comments were received via the web.

The following is a summary of the Open House input.



ISSUE TOPIC	COMMENTS
Access	Provide more opportunities for teaching youth to ski.
Connectivity	Connect the parks
	Skyline Parkway - make it a true parkway (signage, clean-up, landscaping, re-surface, advertise) with National funding
	Bikes should be allowed in Chester Park
	Signs on Lakewalk: Pavement for wheels; wood paths for shoes
	Waterfront areas need to be connected to waterfront uses (marinas, not hotels)
	More paved trails (pave our 100 miles of unpaved trails)
	Reference Vegetation plan for skyline parkway
	Merge Magney-Snively and Spirit Mountain xc-ski trails so that both are in the city ski trail system
	Obj.#4: Reference Vegetation Management Plan for opening up views
Facilities	Connect the Pine Forest Trail to other City Trails - used by 1000's each year and is the largest old growth forest on a fresh water lake
	Restrooms need to be open for use
	Work towards energy efficiency in all buildings (lighting, heating/cooling, access, utilities)
Funding	Trailheads need toilets in summer and winter - no water needed
	Look to Minnesota's alternative energy (wind and solar) companies for donations
	Funding Partnerships (Corporate sponsors, Increment taxes - levy just for parks and rec)
	Design more places for hosting weddings
	Obj#2: No more authorities
	Conduct a feasibility and cost benefit study re MN Ski Pass System (Duluth skiers pay-in a lot more than DNR gives back to Duluth)
	Consider using volunteers to augment ski-grooming in order to increase frequency
	Utilize "Historic Skyline Parkway" Vegetation Management Plan
	Assist communities and volunteers to find funding for projects
GENERAL	Make sure that the plan is Visionary - don't focus too much on current economic limitations
	Privatize parks within community
	Don't sell city land that could become parks or trails
Maintenance	Look at other cities for how they are maintaining their park systems
	Need better recycling options in parks and around town
	Masonry needs remedial maintenance
	Sidewalk gaps need to be filled
	Add in need for recycling in parks

(59)

COMMUNITY
INPUT

ISSUE TOPIC	COMMENTS
Marketing/Communication	Develop better online source for information (trail and park status and locations)
	Advocate to Community members - they are the best ally and worst foe
	Have trails maps available online in a printable format - even better if you can choose which types of trails to include.
Nature	Advocate (to City Council) that Duluth has unique resources.
	Preserve unique natural areas
	There needs to be a tree replacement plan implemented
	More natural functioning landscapes in small parks space should be implemented (butterfly gardens, etc.)
	Avoid monoculture lawns - plant mixed perennials
	More rain gardens
	Need to control Poison Ivy
	Obj#3: Mention vegetation management plan
	Minnesota Point needs its own designation as a Regional Recreation Park
	Obj#2: Refer to Veg. Mgmt Plan
Partnerships	Plant productive timber on city owned land until built on. Poplars and boxelder trees on Brownfields - partner with UMD for students to monitor and test; Sell for pulp - split revenue.
	Utilize all schools more during evenings and weekends - including colleges
	Volunteer <u>Cooperation</u> and <u>Recognition</u>
	Get and keep community members involved
	Coordinate better cooperative use of facilities
	Utilize trail users for maintenance - they are willing!
	Obj#3: Work with SPPA and Duluth Tree Commission using the vegetation management plan
	Need volunteer inventory
	Collaborate more with St. Louis County and Arrowhead Regional Development Commission (ARDC) on funding and planning



ISSUE TOPIC	COMMENTS
Recreation	More neighborhood ice rinks - volunteer operated?
	Re-open Washington Center Pool (small fee)
	Our number one priority should be youth recreation - outside and indoors
	Make winter recreation options more available (free of charge and equipment needs)
	Develop a marina
	More skate parks for kids to play and let off steam
	Add more half-court basketball to small parks near playgrounds
	Not all parks needs recreation centers and extensive facilites - open space is good
	Keep historical recreation buidlings viable and usable
	Bayfront Park needs better ways to make ice and needs to be bigger
	Obj.#4: Lower Chester Rink should be allowed for skating, no torn down, if this is the case.



(61)

COMMUNITY
INPUT

INPUT RESULTS - NOVEMBER 2010

A community input meeting on the Draft Park and Recreation Master Plan was held:

- Wednesday, November 10th
 - » 6:30 - 8:30 PM Washington Community Center

Approximately 60 people participated in the November 10th community review meeting and provided written and verbal comments and suggestions. An additional 25 comments were received via email using the City website response feature.

The following is a summary of the Open House comments summarized by topic.



ISSUE TOPIC	COMMENTS	REPEATS
Parks	Universal access now!	
	Neighbors of Lower Chester Park are seeing a recent increase in youth and hop to see this park serve all needs, including gardening. We are currently working on establishing official status for purpose of purchasing necessary insurance. Please consider inclusion of this in the plan.	
	Have pet owners clean up after them	
	Parks are for children. Structure fun for children - art, physical activities, and learning	
	Keep informal green space for informal pick-up games	
	Regional Park - connect Lower Chester and Chester Bowl with trail and natural ravine. Keep Superior Hiking trail in/through Chester Creek Ravine - major for connecting/creating this Regional Park.	
	Needs assessment is critical. System of Play exercise for adults is key.	
	Enhance soccer, hockey, football, and baseball play areas and fields.	
	Merritt	
	All Parks actions are great. Action #2 is most important due to the new school plan - now is the time to coordinate with school planners.	
	We have plenty of parks, but need a means to keep them maintained with programs in place and funding.	
	Action #1C - great idea	
	Actions #3 and #4 are good	
	Action # 5 is bad - trading land is OK, selling land is bad. Don't sell the land - keep the green - it will never come back.	5
	Action #13 - great idea to vacate Lake Avenue	
	More room for off-leash dogs in city parks and on trails.	
	I like the idea of quality versus quantity. Condensing parks is a great way to draw more people per park.	
	Preserve as much "un-improved" land as possible for imaginative uses, especially for children. These are "small places" that contribute immensely to our quality of life. Go through the process to protect these parks.	2
	Keep Lower Chester Area from E.4th Street to Walking Bridge at E 5 1/2 Street a "Open Area" with possible picnic area and some children appropriate equipment - swings and slides.	
	More covered shelters - have one at Chester Bowl	
	Desire recreational skating at Lower Chester	
	Wade Stadium-Wheeler-Western Middle School is a great idea - do it!	2
	Look at Regional Park Concept to get state funds	

(63)

COMMUNITY
INPUT

ISSUE TOPIC	COMMENTS	REPEATS
Recreation Buildings	Memorial and Merritt - Do not remove Merritt and Memorial. They are needed for the West side residents. Especially skating. Memorial and Merritt were scaled back - rinks reduced, etc. - now we are told they were not used enough. How could we - they were cut back - get them back to 100%. These buildings have historical value - built by WPA. It is the City's fault that they are not used. Looks like most development is planned east of Lake Avenue. Don't fuel the East-West conflict. Merritt and Memorial do need to be updated, but not torn down.	6
	Washington Center Pool should be re-instated (petition signed by over 300 community members). It is needed for inner city kids recreation and learning how to swim.	2
	Add Duluth Heritage Sports Center and Clyde Campus Park to the Wade-Wheeler-Western Middle School Complex	2
	If Grant Recreation Center is returned to school ownership - make sure it is available for community use	
	Fancy buildings, plants, sidewalks, and trails mean nothing where the kids have no programs. Keep each neighborhood park open so kids have availability	
	Why is Europe and the East Coast full of beautiful old buildings and we tear down ours to put up new plastic buildings?	
	Keep buildings at Chester Bowl and Lower Chester - skiing at Bowl, skating Lower Chester. Provide opportunities for picnics.	
	Replace buildings with smaller facilities that are handicapped accessible.	
	New Wade Stadium	
	Portman - I appreciate the Portman is a primary center, but am concerned about the future plan to close it. Driving out to the Lake Park Athletic complex is not near the population. It is simply too soon to consider long-term closure of Portman. There are many advantages to a recreation center in the well-established neighborhoods in and Lakeside and Lester park. The future will most certainly require facilities closer together - energy costs and transportation costs will rise. Significant neighborhood investment needs to happen before negative actions are pursued. Portman has active hockey, senior programs, and softball programs. Lester Park Hockey is planned to merge with Portman - making an even greater demand for skating. In the winter skating gets used 7 days a week.	5
	Making more efficient use of buildings and recreating centers and closing surplus buildings makes good sense.	
	Washington/Central Hillside buildings and grounds are a disappointment. Where is incentive/commitment to these spaces?	
	Observation - If there is salable property in Duluth, it is most probable that this location could be sold for commercial or residential development. There is no need for more City facilities that will compete with private businesses for such activities as weddings, conferences, etc. The City of Duluth does not need to be in the business purposes identified for this site.	
	Ski jumps are a safety concern	
	Before buildings are closed down or demolished, neighborhoods need to be notified and meetings need to be scheduled. Neighbors want to have input.	3
	Center buildings need to be minimal and maintained.	
	Upgrade and maintain the Lincoln Park building - including the basketball court. This is vital to the neighborhood.	
	Piedmont - the building is in need of demolition, but it is not urgent. It currently sits on a piece of land that is not suitable for building. Parking needs to be improved. Move existing new playground to front of property. Building should house concessions, player-skate area rooms (2 at least), water connections (flood hose), bathrooms, and storage. Locate it in the center of 2 hockey rinks - after relocating them up top of property, to include 2 youth or 1 full size softball/t-ball fields (like a complex). Currently the Piedmont youth hockey and softball use a garage for storage. See Drawings.	
	Programs, then buildings. Programs come first.	
	Lincoln Park - This facility is used heavily and extremely important for the West side residents. It is located in a signature park that has been strongly maintained by volunteers. Pleasure Ice Skating, the Mountain Bike Challenge, and other community events (including the Fire and Ice Winter Festival) are held here. Volunteers Caring and Patrolling (VCAP) has been managing day to day operations in the building and park for about a year and just entered into a 2 1/2 year lease of the buildings and grounds last fall. All labor for maintaining the rink and building are volunteer. Over 300 different individual kids skated at Lincoln late year. VCAP is actively involved in supporting community involvement, active recreation, and help provide for the changing needs of the residents (i.e. the new dog park proposal). Please remove Lincoln Park from the removal list and plan for energy improvements. Add Lincoln Park School access reuse with connection to B & G club and Lincoln Park.	

ISSUE TOPIC	COMMENTS	REPEATS
Trails/Connectivity	Trail Plan funding is our highest priority in the future	2
	Keep trails and connect trail system throughout the City - bike/hike - utilize existing parks with these trails.	
	Trail right of way and connectivity is critical. Keep all development engage with building trails and route to plan.	
	Great plan.	
	Action #21 may be coming soon with City Council help. These areas are in demand - #18 is a must!	
	Need improved signage to direct users to the trails off the main thoroughfares. No signage for Mission Creek Trail in Fond du Lac. Many signs not visible.	
	Trails are great. Monger to Carlton and south - keep it up.	
	We appreciate the Monger Trail and use it a great deal.	
	There's enough trails and it would cost more to maintain more.	
	Information about trails is needed	
	Action #22 is very important	
	Recognize that some of the unauthorized trails are good ideas and need incorporation into trail system. Some unofficial trails serve to connect to official trails from neighborhoods, and places of community interest, such as schools and businesses. They are also wildlife connections	3
	Action # 17A and #17J - Yes!	
	Consider extending DIP trail idea all the way West and North to its Western Terminus on I-35.	
	Action #18 & #19 are needed, as is #21.	
	Do include the snowmobile trails, both east and west. We have had our trails on the ground since the early 70's. Trails are maintained by the clubs and are self-supporting under grant-in-aid program. Major trail projects are a coop effort of City and Clubs and often funded by the grant in aid program. We want to be included in the Master Plan Development	
	Maintain the Superior Hiking Trail	
	Develop Munger/Baywalk/Lakewalk trails as backbones of walking/hiking trail system through the length of the City. Other trails connected to these can reach other nodes of population and natural features (many through the parks).	
	Duluth is a huge biking community. We need ways of making bikes more popular on the streets. The last couple bike to work days have been quite sad as it is held where few bikes can safely get to.	
	Create a "connector" for bicycles above the tennis court area at Chester Park on existing trails to St. Scholastica, and connectors from Grand Avenue and to Magney-Snively Area.	
	Connect all trail groups	
	Good maintenance is more important than connecting the trails, with an exception for safe bike paths for communities.	
	Connect Western Middle School to the Superior Hiking Trail	
	Extend Western Waterfront Trail along old Northern Pacific Rail Grade to Fond du Lac.	
	Formalize use of old DWP rail grade as gravel multi-use trail.	
	Hire Judy Gibbs as trail planner.	
	Keep the creeks wild. Put any paths away from these wild corridors. No paved paths.	
	Ski trails should also connect across the City	
	Coordinate with neighboring cities and townships	
	Concentrate on the Cross city Trail - making it accessible to residents, businesses, and schools	2
	Enhance educational efforts to protect Lake Superior Watershed signing all Creek Crossings of the Superior Hiking Trail and waterside trails.	

(6 5)

COMMUNITY
INPUT

ISSUE TOPIC	COMMENTS	REPEATS
Funding	We have no money - so focus on what little we have on the children.	
	Minneapolis Model - create the Parks and Recreation Department as a District - with taxing ability. .5% or 1% to fund this on property tax	
	Action #28 should be moved up in the priorities	
	Good ideas for funding, except Action # 26 (selling park land)	3
	I will pay more taxes (and I am low income) to have more places for the children.	
	No new taxes to support maintenance/growth of park lands	
	If there is no money, change is a must. Changes are subject to change of \$\$.	
	This is a major concern. Duluth is broke. We're saving money with renovations, but where does the upfront cost come from?	
	Work with the Medical Community to help fund parks as preventive mental health assets.	
	Work with "no child left inside" initiatives and groups.	
	Re-evaluate the cost versus revenue received from Golf.	
	Fund Parks and Trails with advertising	
	Sell Park T-shirts and other merchandise.	
	City bonding	
	Hospital tax	
	Local income tax ordinance	
	Foundations	
	Look at special purpose funds that do not go into the general fund.	
	Hope you immediately implement Action #23, 24, 25, 29	
Maintenance/Stewardship	We are responsible for letting the parks become run-down. Once the buildings are knocked down, they will never come back.	
	Kids don't care about the buildings - give them some fun.	
	Acts #34, 45, and 47 are being done and should be on-going. Action # 44 should be a priority.	
	There has not been enough maintenance in the parks at Merritt and Memorial in West Duluth.	
	Good ideas suggested for maintaining and improving our parks	
	We need to foster pride in ownership of our parks and trails so leadership in this area needs to be in place.	
	Return a "summer youth" working group for job training and to get minor maintenance jobs accomplished.	
Marketing/Communications	Every park should have a regular community stewardship day, which people can come to and volunteer	
	Get a column in the Sunday paper promoting all the park and letting folks know what is offered to them	
	Make sure we coordinate marketing with ISD 709, local youth agencies, and neighborhood groups	

ISSUE TOPIC	COMMENTS	REPEATS
Partners/Volunteers	Western Middle School should offer outdoor education (West side students are lacking the opportunity) to be staffed by ISD teachers and students serving the school and community with interpretive programming	2
	Why are community clubs and sports volunteers who contribute their time required to acquire liability insurance through or payable to the City to use these facilities?	
	I do not believe the School District will come through in West Duluth with space at Laura MacArthur	
	Proceed with Volunteer Coordinator ASAP	
	Try to find volunteers to give to kids	
	Make people more aware of community clubs. Make up ideas plans and excitement for people to want to participate. Ideas on how to start community clubs.	
	Action #37 is already being done - could be expanded. Yes, #43 could be done now.	
	Try to get the word out to all the different communities on how to form partnerships to maintain and use recreation buildings and keep them viable.	
	What happens if the partnership with ISD doesn't work?	
	Superior Hiking Trail Association provides construction and maintenance throughout the City	
	Work with Hockey Associations to pick up part of costs to keep buildings open	
	It's easy to volunteer and hard to get follow through in too many cases. Strong volunteer program are needed.	2
	Need sustainable funding for parks maintenance.	
	Do more with Fit City Duluth	
	Find better ways for residents to volunteer and get involved in stewardship without being an "organized group". We were turned down when we wanted to care for part of Congdan Creek because of this.	
	Let non-profits take on some of the facilities.	
Recreation Programs	Keep the Sailing Program.	
	Hockey - horseshoes - softball - neighborhood watch club meetings - north woods kids utilize the center - they are involved (?referring to Merritt?)	
	We definitely need to bring back recreation programs - through the schools works	
	We offer poor park programs for children - we will loose potential families that might consider living here.	
	Please remember access to recreational activities for children, within walking distance of neighborhoods, especially for summer programs.	
	Use community ed to put programs into community centers	
	Provide more intergenerational programming for recreation	
	Encourage/support more outdoor fitness programs in the parks - yoga, tai chi, zumba, etc.	
	There needs to be a focus on programs for children in the inner city and western parts of the city (specifically Observation, Fond du Lac, Lincoln Park, Lower Chester, etc.) Hire more recreation specialists if you need to.	2

(67)

COMMUNITY
INPUT

ISSUE TOPIC	COMMENTS	REPEATS
General	Do same targeted outreach/focus groups with sports associations/user groups.	
	Quit tearing down buildings. We don't care about fancy buildings. This community tears down buildings like I have never seen before. Most cities I have been in cherish their architecture.	
	This is a good step. As plans move ahead during implementation, stage changes can occur.	
	Keep an open mind and please connect with each neighborhood at the beginning - bring the citizens in and have them help you determine what their neighborhood facility or greenspace or trail can become.	
	Engagement of ALL stakeholders - including the Duluth Area Indian Commission, School District, NAACP, Sponsoring Churches, Community Clubs, and surveys within the area of targeted parks.	
	Don't go with trends - go with providing programs at neighborhood centers for kids that need them.	
	We can only blame ourselves for why the parks have deteriorated to the point of some wanting to tear buildings down. Let's work on trying to save them all and work on building these community clubs up by getting neighbors involved. We sell these neighborhood parks and we lose them forever. Some of these parks have kids hanging out and playing but are unsupervised and need supervision. Let's not just give it up so easy. We need neighborhood centers.	
	I agree with all, but sustainability should be promoted to a higher priority.	
	Wonderful, well developed long range plan for the City's Parks. All topics here have been addressed. The City should adopt this plan immediately and get to work improving our green spaces. Thank you.	
	Master Plan looks good on paper. Implementation - when and how funded? The multitude of parks and trails in Duluth is a major reason as to why we built our retirement home here and why so many nonresidents say they would love to live here if only the jobs were still here.	
	A generally well thought out plan - improved from the Draft.	
	Our City government should get behind this plan and support this plan with action. Next to the Lake, Duluth's Parks, trails, and open space are its greatest asset.	
	Flexibility and openness to change does not come easy to most humans, even when times are hard. Any decisions made today can change tomorrow. Necessity today dictates sustainability and self sufficiency.	
	Topography in Duluth doesn't lend well to comparisons with other cities and I think is pretty useless. Duluth is Duluth. We are pretty fortunate to still have so many green spaces (sacred spaces) to preserve. Trails are an asset that demand participation.	
	Will these changes be economically and fundamentally sound?	
	Please care for the Lincoln Park community and seek their input before making any more park changes.	
	Hurray! Great Work. We have needed this for some time. Duluth is an example of a place that can really do do youth-nature connection right.	
	Need to include Duluth Heritage Sports Complex - it is missing and a key wonderful asset	
	Great focus on equity, hubs, and quality - encourage more outreach to ensure buy-in and ownership before finalized.	
	Be sure to include key non-profit places (the zoo, spirit mountain, heritage sports center, etc.) - these are your partners who will help advocate.	

ISSUE TOPIC	COMMENTS	REPEATS
Priorities		
	Children's Programs. Athletics, scrimmage games, ice skating, summer programs, play, art, structure, positive reinforcement.	
	Keep the buildings - wait for the economy to bounce back.	
	Skyline Parkway should be a priority. It isn't user friendly. It could be a huge asset to residents and visitors.	2
	Western skyline overlay roadways open vista view and cut back brush and trees to return views to what they were. Long term goal to rebuild the bridge and open roadway from Becks Road to Fond du Lac.	
	Sell off some land/buildings - maintain what you have before anything new	

COMMUNITY INPUT

The City of Duluth conducted a survey of residents in November 2009 to gather opinions about parks and recreation issues and priorities for the future. Survey questionnaires were mailed to 3,500 randomly selected Duluth households. 439 completed surveys were returned for a response rate of 13%. The survey has a margin of error is + 5% at a confidence level of 95%. Evaluation of the results follows each question in *italics*.

[illegible]

- *Duluth parks are well used. 97% of respondents are park users and 69% visit parks at least every month.*

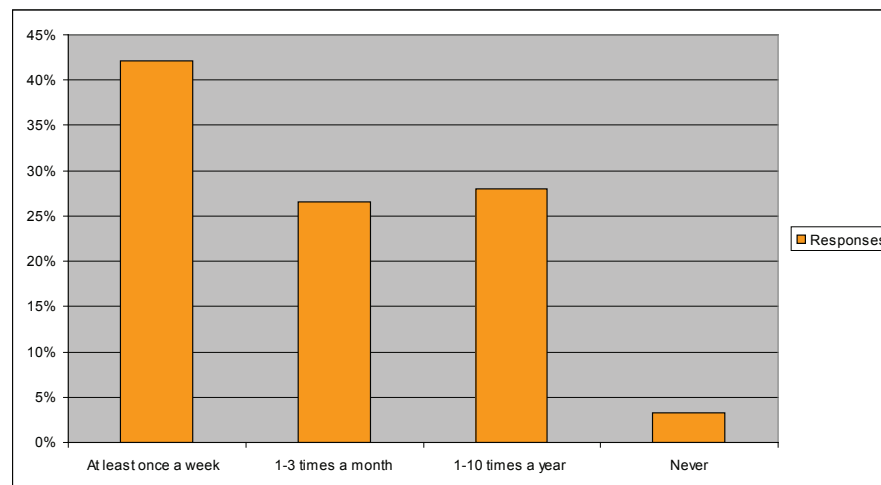


Table 1: Results from Question 1

Question Two - Which parks, trails, recreation facilities and activities do you or members of your household use?

- *The lakewalk is the most popular park facility.*
- *Trails are the most frequently used recreation amenity.*
- *Community center buildings, smaller green spaces, indoor facilities and programs have a lower use.*

Question Two Results

- **351 - Lakewalk:** The linear park and trails running along Lake Superior from Canal Park to the east.
- **326 - Community Parks:** Larger parks designed to serve the community such as Canal Park, Chambers Grove, Chester Bowl, Leif Erickson, Lincoln, Park Point and Wheeler Athletic Complex.
- **326 - Regional Parks:** Large parks and natural areas such as Bayfront, Brighton Beach, Enger, Fairmont, Fond du Lac, Hartley, Hawk Ridge, Lester/Amity, Magney/Snively and Spirit Mountain.
- **273 - Neighborhood Parks:** Parks closest to your home.
- **265 - Other trails:** Chester Creek, Hartley, Hawk Ridge, Keene Creek, Kingsbury Creek, Lester/Amity, Lincoln, Magney/Snively, Mission Creek, Park Point, Tischer Creek, Western Waterfront, etc.
- **238 - Special Use Areas:** Unique parks and recreation facilities such as Arlington Soccer Complex, Rose Garden, Indian Point Campground, Boy Scout and Munger Landings, Lake Superior Zoo, Grassy Pointe,

Enger Golf Course, Lester Golf Course, skateboard and basketball parks.

- **177 - Community and special events** such as summer concerts at Chester, summer outdoor movies at Leif Erikson, sandmodeling contest, Holiday Banquet and City of Lights Tour, 4th Fest, etc.
- **87 - Community center buildings** located in city parks such as Portman, Woodland, Morgan Park, etc.
- **61 - Passive Parks:** Smaller less developed open spaces such as Corner of the Lake, Fond du Lac Park Square, Heritage Garden, Lake Place Plaza, Lake Superior Plaza, Old Main, Pennel, Stanley, University, etc.
- **59 - Indoor recreation facilities** such as Washington Center and Heritage Sports Center.
- **57 - Organized recreation programs** offered by the City, schools, non-profits or others.

Question Three - Budget constraints in many organizations have triggered changes in priorities and services. We are interested in your opinions about recent changes in recreation facilities and services.

a.) Organized recreation programs and activities offered by the City, schools, non-profits and others were reduced. Are there gaps in recreation programs or activities needs that are not currently being met?

- 21% of respondents feel that there are gaps in recreation program opportunities.

b.) Park maintenance services and recreation facility replacement have been reduced. Have these changes affected you or your household?

- 28% of respondents feel that cuts to park maintenance have affected park use and community quality.
- 50% did not see a negative affect from maintenance cuts.

Question Four - How often do you bicycle in Duluth?

- Half of the survey respondents are bicycle riders.

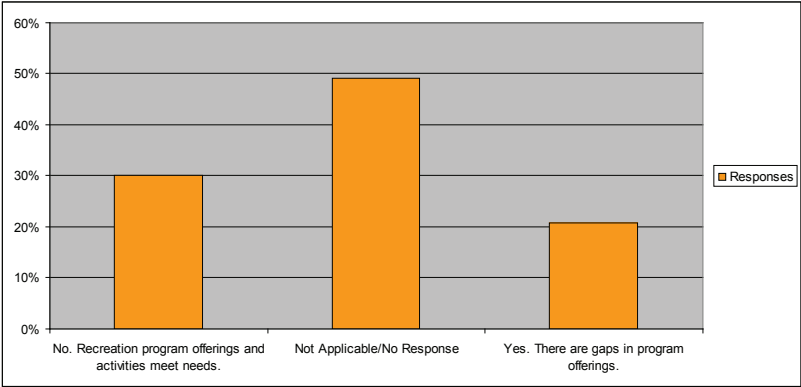


Table 2: Results from Question 3 (a)

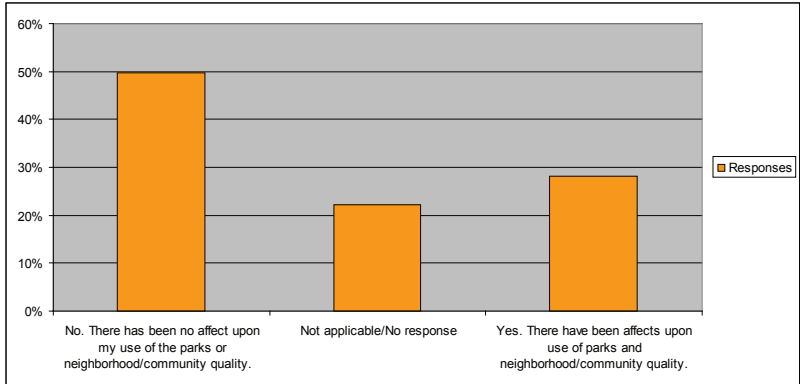


Table 3: Results from Question 3 (b)

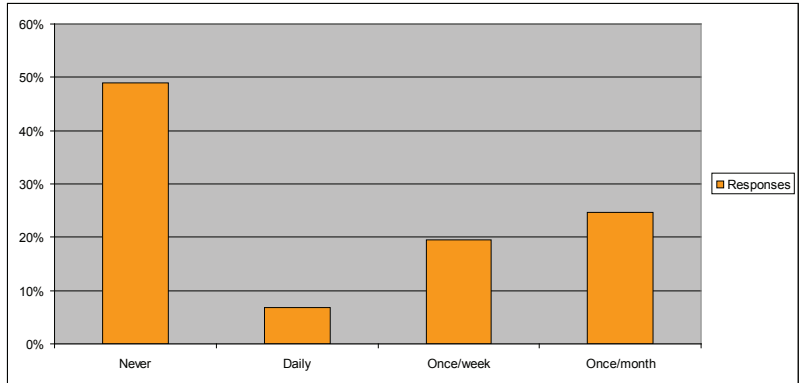


Table 4: Results from Question 4

Question Five - Do you bicycle in the winter?

- *Duluthians are hardy. 8% said they bike in the winter.*
- *This has implications for removing snow on paved trails and clearing shoulders on bike routes.*

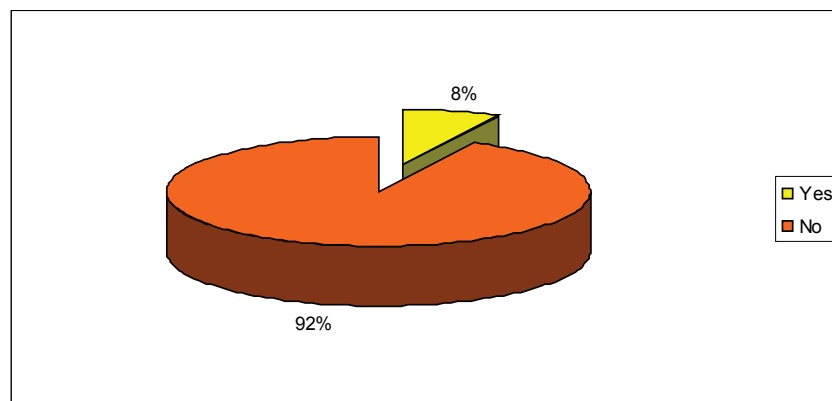


Table 5: Results from Question 5

Question Six - Do you ever bicycle to work?

- *21% of people have ridden their bikes to work.*
- *This is a high proportion compared to other cities.*

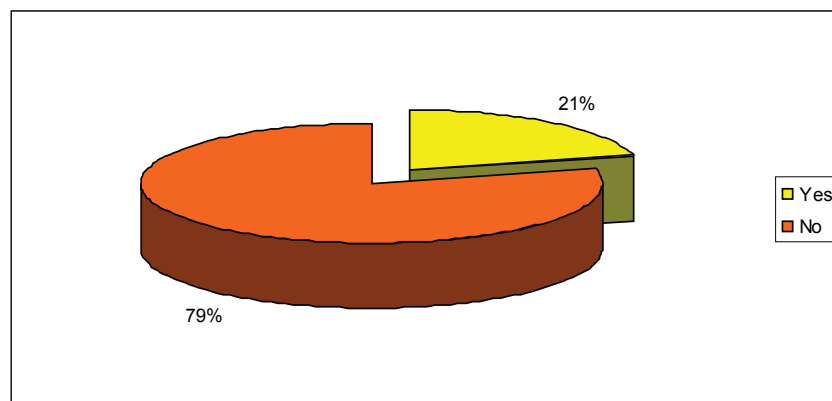


Table 6: Results from Question 6

Question Seven - Do you mountain bike on unpaved trails?

- *24% of respondents ride on unpaved trails.*
- *This is a high proportion that reflects both levels of bike use and the presence of off-road*

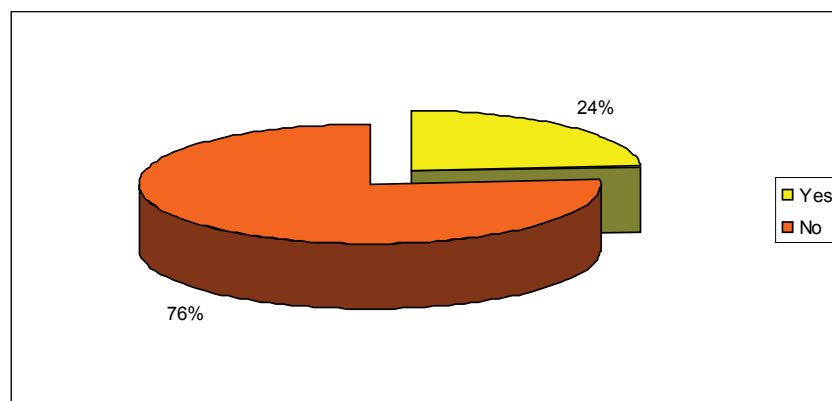


Table 7: Results from Question 7

Question Eight - How satisfied are you with the following elements of the Duluth parks and recreation system and what priority does the element hold for your household in the future?

The satisfaction and priority ratings of survey respondents can be compared to indicate potential policy direction. The chart plots survey responses for the park and recreation facilities, programs and activities into four policy quadrants. The two axis intersect at the average satisfaction rating and the average priority ranking (in percentages) to create the four policy quadrants (See Table 8).

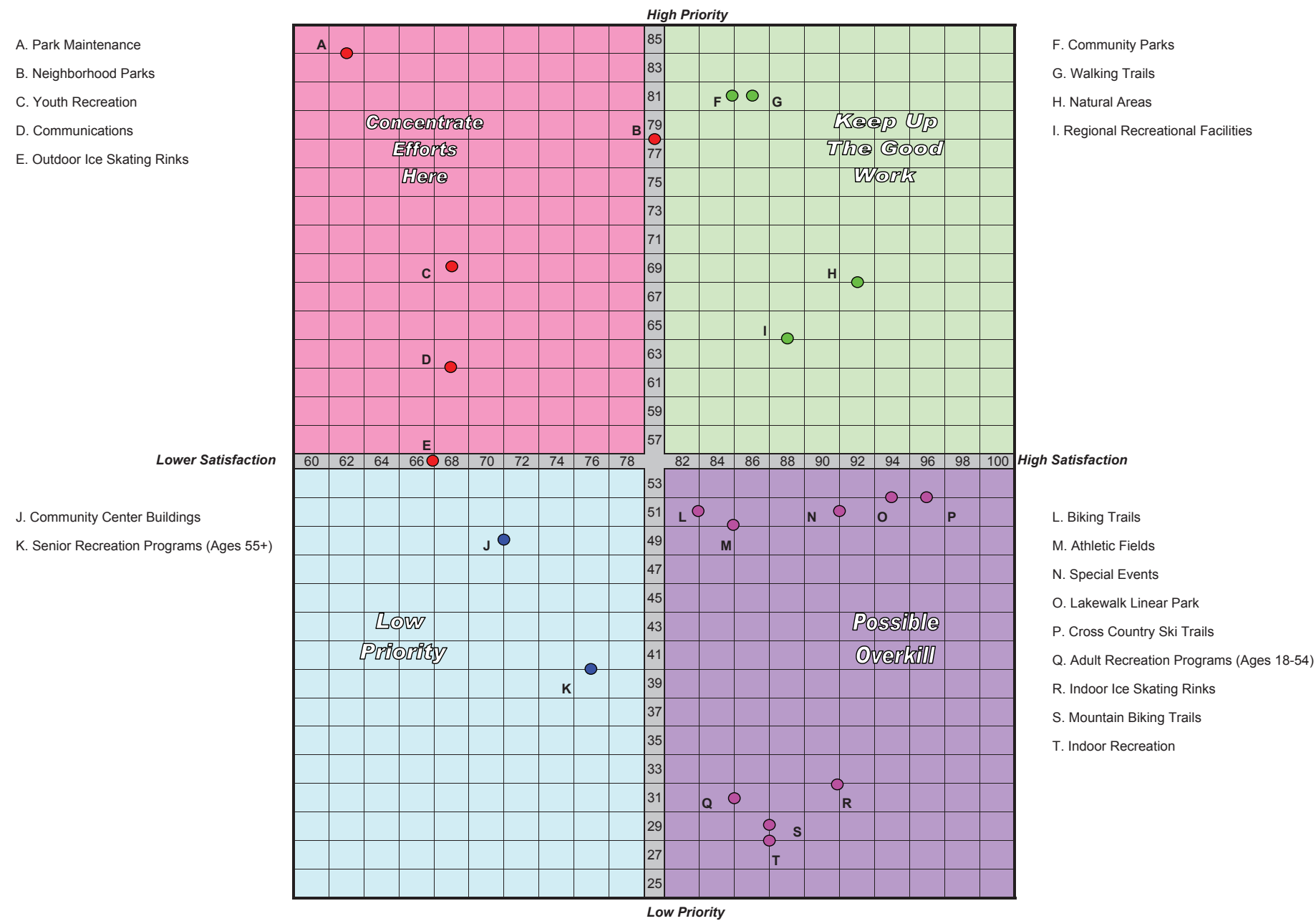
Concentrate Efforts Here - *People ranked Park Maintenance, Neighborhood Parks, Youth Recreation, Communications as high priorities for the future, but rated then lower in satisfaction. This indicates that more resources are warranted in these areas. Outdoor Ice Rinks were rated lower in satisfaction and average in term of priority for the future.*

Keep up the Good Work - *Community Parks, Walking Trails, Natural Areas and Regional Recreation Facilities were identified as high priorities for that future and they had higher than average satisfaction ratings. This indicates that current level of effort in these areas should continue.*

Low Priority - *Community Center Buildings and Senior Recreation Programs were ranked as lower than average priorities for the future and lower than average in satisfaction. Evaluate and potentially revise resources devoted to these items.*

Possible Overkill - *Adult Recreation Programs, Indoor Ice Skating, Mountain Bike Trails and Indoor Recreation were rated as lower than average priorities for the future and ranked higher than average in satisfaction. This indicates that efforts in these areas could possibly be cut back with little loss in satisfaction. All four of these are specialized activities not used by the broader population. However, all these recreation uses have significant, but passionate users so further investigation is warranted before changing resource efforts.*

Table 8: Results from Question 8 - Priority for the Future and Current Satisfaction



Question Nine - We would like your opinion on key issues facing parks and recreation in Duluth.

a.) Duluth's parks, trails, recreation opportunities, and public open spaces are key elements in quality of life and the quality of the community.

- *Duluthians highly value parks , trails, open space and recreation.*

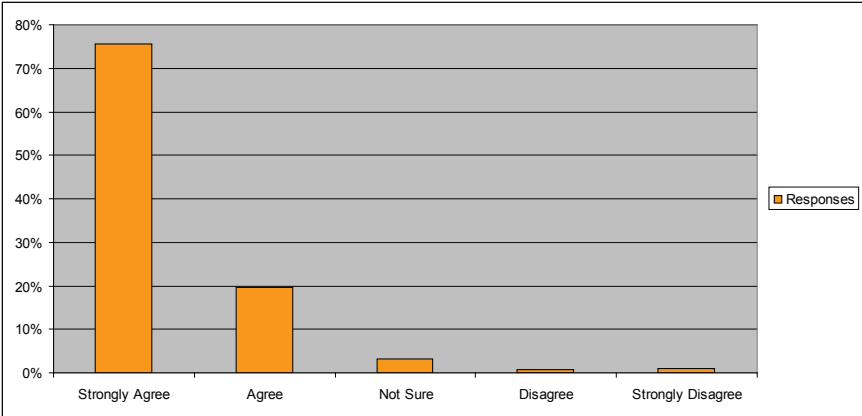


Table 9: Results from Question 9a

b.) Duluth should assure that neighborhood scale parks and recreation facilities are within easy walking distance of most people's home.

- *72% felt that parks and recreation facilities should be within walking distance of one's home.*

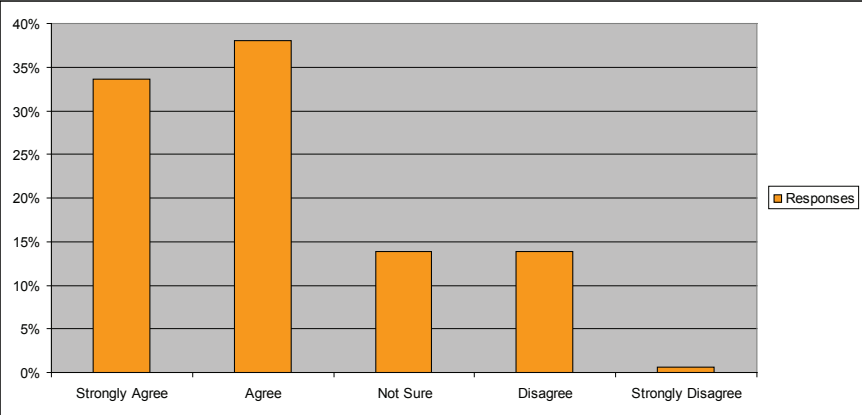


Table 10: Results from Question 9b

c.) Duluth should assure that high quality parks and recreation facilities are within an easy drive of most people's homes.

- *88% of people feel that high quality parks should be within and easy drive of one's home.*
- *More people valued the presence of high quality parks within easy driving distance than having neighborhood parks within walking distance.*

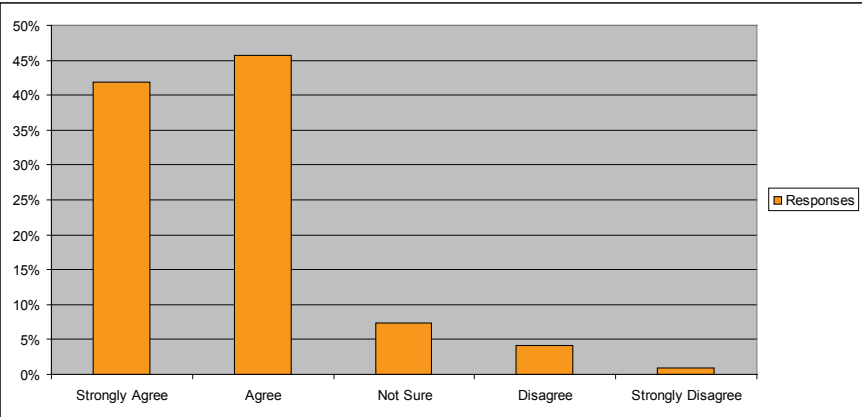


Table 11: Results from Question 9c

d.) Duluth should focus on connecting parks and neighborhoods with trails and bikeways.

- 64% of respondents feel that trail connections are important.

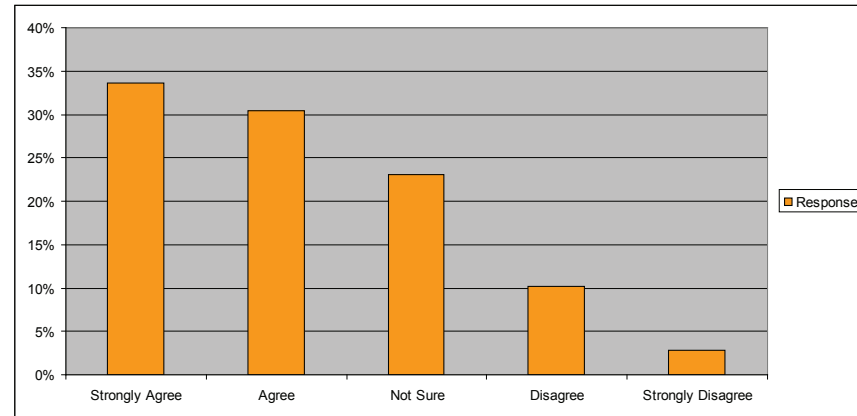


Table 12: Results from Question 9d

e.) Several community center buildings in parks are currently closed due to budget constraints and the deteriorated condition of the buildings. What option for dealing with these buildings do you prefer?

- 74% of survey respondents favor a policy of reducing the number of community center buildings and renovating older remaining buildings

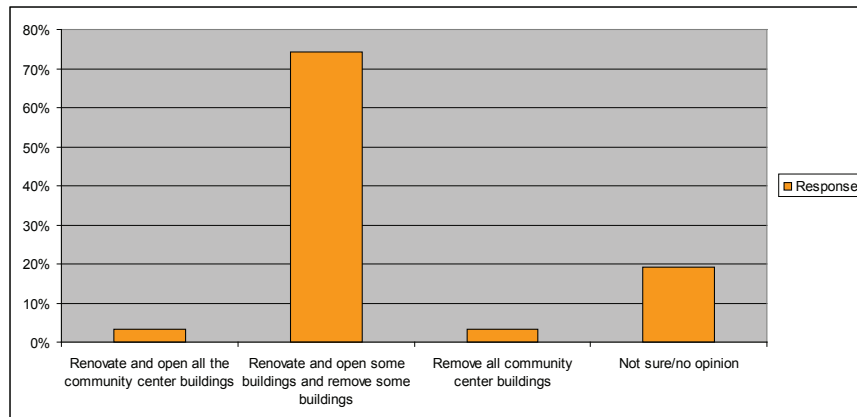


Table 13: Results from Question 9e

Question Ten - According to the above map, in which area of Duluth do you reside?

- 32% *East*
- 43% *Central*
- 17% *West*

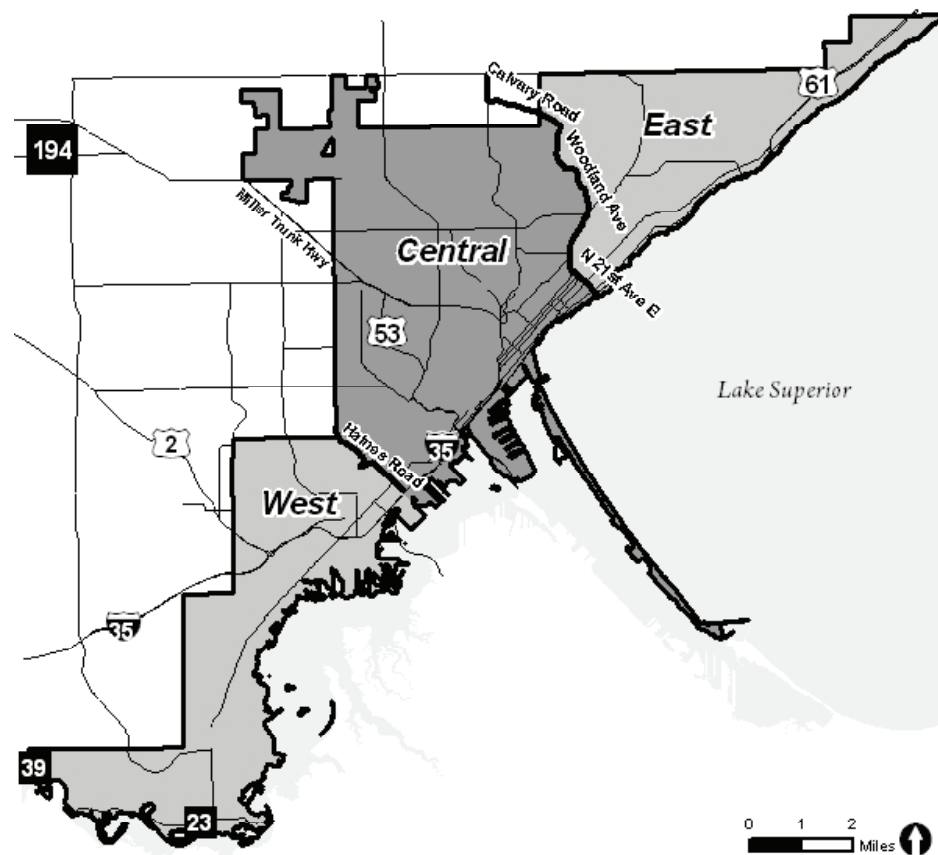


Table 14: Map for Question 10

Question Eleven - Which of the following improvements/additions to the Duluth parks and recreation system would you be willing to support? i.e. through a temporary or permanent tax increase.

- *Survey respondents support improvements and additions to park and recreation systems.*
- *Duluthians would support tax increases for bike/walk trail additions, expanded park maintenance and neighborhood park renovation.*
- *There is less support for athletic field improvements.*

Great and Marginal Support	Great support	Marginal support	No support	Category
82%	212	136	74	Additions to and extension of bike/walk trails
85%	182	168	61	Renovation of existing neighborhood parks
79%	113	214	87	Renovation of existing community center buildings
78%	138	186	89	Improvements to existing passive, nature parks
69%	82	203	127	Improvements to existing athletic fields
77%	122	194	93	City sponsored recreation programs and activities
86%	188	170	59	Expanded park maintenance

Table 15: Results from Question 11

Question Twelve- How many people in the following age categories live in your household?

- *The age distribution of survey respondent households is fairly close to the actual age distribution.*
- *People within the 20-29 age group were under represented in the survey responses and people within the 50-64 age group were over represented in the survey results.*

Age Group	2008 Census	Park & Rec. Survey
Under 19	26%	25%
20 - 64	61%	63%
65+	13%	12%

Table 16: Results from Question 12

1. **Organized recreation programs and activities offered by the City, schools, non-profits and others were reduced. Are there gaps in recreation programs or activities needs that are not currently being met?**

Facilities

- Not accessible
- No parks within walking distance, nothing, zero, zip.
- Gaps in community centers
- Skating
- No score boards for girls fast pitch softball - fields could be in better shape
- No Grant rec and no skating at Grant Rec
- Ice skating rinks!
- Area ice skating rinks are missed
- More available indoor facilities - especially during the winter months!
- Rinks
- Completion of the boardwalk to Brighton Beach

- Additional children playground parks
- More dog parks
- Continue to extend/expand Lakewalk
- Public swimming pool
- Community centers have been closed - breaks down the foundation of community
- Lease out Enger and Lester Golf course
- Library
- My soccer league can't play in as many parks
- Management at Lester Bowl
- We skate (free skate) at the Portman rink, and it seems the warming house hours have been reduced
- Non-hockey ice skating indoors
- Neighborhood public swimming
- Pool- Swimming facilities in Hillside area - greatly reduced
- We need parks, not programs
- Winter ice skating and hockey (outdoors)
- Washington Square Park

- On-water activities: sailing, canoeing, kayaking, rowing.
- Notice skate broad park on Hamond Ave in Superior, Hope Duluth has one.

Maintenance

- trash cans
- Maintain currant facilities
- Provide trash pickup where discoun
- "Maintain" current facilities
- Provide trash pick up where discontinued
- Mowing of park fields
- Garbage pick up
- Upkeep bad
- General upkeep

Programs

- Dog play group
- More hours at neighborhood rinks for rec. skating - NOT HOCKEY
- Sports program for high school age
- Senior center need to be kept open

- I believe you could get many volunteers to help out so places could be open more
- Even operating phone - its frustrating to call and not get an answer
- More youth programs
- If you cut athletic & activities programs it will cost more in the long run, kids will find other activities
- Our family no longer used rec programs (kids grown) but there are huge gaps in rec programs - for xx lakeside/Lester park neighborhood and for poor kid
- Use of building during practices (sp??)
- After school programing
- Libraries
- No summer program at Lafayette
- Provide little or no service to Fond Du Lac area
- After school/summer activities at Portman
- Most of the programs we use are youth sports or lessons through YMCA
- Summer park-rec programs for neighborhood children
- Some events, that transportation is needed ex. people with cars, disabled, elderly
- Students I work with love the rec programs
- Low income after school programs - research links this to increased juvenile delinquency
- Lunches
- Summer programs for children
- The woodland community center program was closed. Tons of kids came there every day and it was a good program
- Not as many close places for kids to go for youth programs
- We don't have children who use after school programing but it is needed and there are gaps
- We cut all the extra activities for the kids
- Senior games
- More activities for preschoolers
- For children and seniors
- No supervision after school
- Youth and senior food programs in Morgan Park are desperately needed to maintain / sustain the community
- Every neighborhood needs youth recreation programs
- Not to much for ages 4-7
- Summer and after school program at community center
- Reduction of after school and summer youth programs
- More programing for kids 6-16
- Programs for our youth
- Programs need to be kept for seniors and child - the most needy groups
- Not enough outside programs
- Summer kids programs
- We used the toddler time at Woodland Community Center
- I feel you should continue to provide low-cost programming for children
- There are rec programs sponsored by non-city - ie YMCA
- We utilized the summer program at Portman and miss it extremely - my two oldest children are too old for daycare but still need something to do over the long summer months

- I am hopeful “we” can provide as many programs possible for our youth
- Utilize more volunteers
- Seems kids lost programing this summer which is unfortunate
- Programs for seniors
- Parents are stepping in to help/ fill in programs for kids - Great!
- Neighborhood community club activities for families (children)
- More for kids, especially central and west
- Summer recreation
- Cutting programs for seniors,
- Summer youth programs
- Youth sports
- Keep activities and programs for youth.
- Programs for youth are needed, many have been cut.
- Not sure what you are asking - But we need more programs after school!
- Rarely if every use organized rec, no children in our household.

Other

- Use \$ wasted on these study groups get paid
- Too many unused / rarely used parks, waste of money
- as these economic realities dictate
- We need to cut the number of city employees

2. Park maintenance services and recreation facility replacement have been reduced. Have these changes affected you or your household?

Bathrooms

- Adequate restroom is port a-pot-facilities at beaches and parks needed
- Rest room availability
- Except possible bathroom needs
- Outdoor bathroom facilities

Facility Needs

- Playground equipment has been removed from parks and not replaced
- Replacement of old play equipment
- Duluth libraries
- Woodland Community Center
- More in the woodland area, a play ground
- Need a pool - Rec facility for teaching purposed

Garbage

- Beer bottles broken trash in parks
- Adequate garbage cans needed
- No garbage can at 43rd and superior now
- Just need to clean up after ourselves and others better
- More garbage cans outside at downtown, fewer garbage cans in Hillside
- No garbage cans on some trails seem to increase litter on trails
- Less trash cans for waste / picked up litter disposal

- Often there are lots of garbage at the parks we visit, the swimming hole at Lester, - Maybe if there were a trash can there
- More garbage at parks
- We need more people cleaning the parks - like prisoners!
- Garbage at Brighton Beach
- Garbage - Cans are frequently filled
- Main concern is that garbage container be there and picked up
- Lack of garbage cans
- Parks need trash cans and trash pick up
- More litter
- Trash removal
- Pick up trash
- More litter visible but citizens stepping in to clean up
- Garbage has increased
- Trash cans being emptied / hauled away
- Garbage
- Garbage, garbage, garbage.
-

Hours - Extended

- Hours of operation not long enough at neighborhood parks
- Skating Rink not open or supervised
- Rink hours are reduced
- No ice skating warm up buildings open or such limited hours that I can't utilize the facility
- Would like to see community centers remain open
- Time community centers are open
- Reduced Portman rink warming house hours, otherwise our park has not been affected
- My daughters like to ice skate - warming houses
- Community Park Buildings are not open for ice skating

Maintenance

- Who want to use a park that's run down
- Upkeep of retaining walls
- Lafayette tennis courts need re-surfacing
- Erosion of trails only Amity Creek

- Possible that those employees trim alley trees as west Toledo up to Cleveland not done for some time
- Grass cutting around signs and play equipment
- Less mowing
- Fix our streets that we use daily
- Sometimes play equipment goes un-repaired
- Upkeep
- The Piedmont ballfield was terrible this year - Garbage needed to be emptied etc.
- Mowing on trails hasn't been as frequent as it used to be
- Not yet but if it keeps up the parks will decline
- Western water front trail and Brighton Beach are great - sometimes fall behind in maintenance
- Lower Chester: buildings need painting, closed, took out BB hoops - Never replaced, talk of new play xx? Never materialized
- Chester park trails in need of maintenance and repairs
- Things that might have been xxx? In past - not being kept up

- Neighbors have taken over mowing the grass at Grant Park
- Upkeep and Clean up - Could be volunteers
- Unmowed lawns
- Lack of dog litter bags
- Maintenance - porta poties on park point
- There is a clear reduction in maintenance and investment, we either need to reduce our assets or allocate more resources to maintaining them, too many areas fell un-cared for or unkept
- Parking areas at/near Riverside and near Munger Motel are not taken care of
- Cleanliness of trails, garbage pick-up, porta-pottie locations/ time
- Cutting of grass
- The city needs to do a better job of maintaining the gardens, trees, shrubs in all public areas - we want to be proud of our once beautiful city
- If we who use the parks would clean up it would not be a problem
- Maintenance lacking
- Basic equipment upkeep
- Parks need to have grass cut more often - this reflects poorly on community
- Mowing
- Upkeep has kept us (senior citizens) from going as often
- Lakewalk need maintenance work all over it
- Conditions and core facilities at Morgan Park has degraded much to the detriment of community
- It's a liability to live next to a Duluth Park - not an asset
- Keen Creek Park used to be for the kids and families, now it is un-maintained and has the dog park as the main thing
- Poor and reduced maintenance of rinks
- Lester Bowl caretaker
- Golf courses are slipping
- Reinstitute garbage can at Munger Trail / Waterfront Trail Parking lot
- Buildings are shameful
- Hiking trails are not maintained
- It hasn't changed but Munger Trail could use a seal coat for rollerblading
- Problem - Dog poop on Lakewalk - bad!
- Local skating rinks not maintained
- Tennis courts not maintained
- Enger and Lester Golf Courses should be either improved or sold -they are embarrassing. Nemadja has a far better course because they take care of it
- Chester Park not kept up, not maintained, mowed, need garbage cans
- Park Point beach house - limited access and cleanliness
- No community center
- Gaps in community centers
- Don't go to Memorial as much as we used to with no skating!
- Chester Bowl hadn't been groomed as well as when groomer was at hill
- Quality programs for young families
- My soccer league can't play in as many parks

- Community centers for scheduled activities
- When I grew up we always had summer baseball, winter skating and hockey at Layfayette
- My children are grown, but lack of youth programs affect people/parents I know.

Safety

- Park Point beach rules seldom enforced (fires, parties, parking)
- need more supervision of community parks for safety and appropriate use
- The lakewalk between 21 and 28 aves east need more lights
- Doesn't feel as safe as in the past

Other

- I do not use them
- To fund these services why not tax those that make the most from our summer/winter events
- I am a dog walker - I use the mutt mitt boxes when they are stocked
- Chester Bowl - 200 plus skiers - a shame to cut the program

- No Grant rec and no skating at Grant Rec
- More volunteer use, Heritage Trails, etc.
- Memorial park has few trees now - it is hardly park-like
- The parks are still kept up well, thanks to proper use and organizations volunteers
- I will continue to use what's available
- Chester Bowl Program
- Grooming of ski trails is not as frequent
- Waste dog bags
- Less poop mitts for dog poop
- We expected cut to services this past summer, but upkeep of parks and comm center was better than expected
- Many trail needs better signage
- Use of community groups and individuals should be encouraged to do park maintenance
- Road repair front of Portman
- Dog waste bag receptacles empty

- my needs are met but am concerned about others
- We have over developed some of our park areas, especially Hartley
- Many volunteers have helped with trails, the Rose Garden, etc.
- Better with the "Y" at Woodland
- ski trail grooming has been first rate
- We need affordable programs to help our youth
- senior programs
- I don't know about this year, but what about next year?

3. Please list any other parks and recreation improvements you would like to see in Duluth or any other comments you would like to make.

Dogs

- Add a dog park in the east side of town
- Additional dog parks like Keene Park

- Areas designated for mountain biking that allow dogs off leash
- Dog areas in more parks
- Dog parks
- Eliminate dog parks -
- Enforcement of dog leash laws and poop pick up. - Parks and trails we use have become in effect open dog parks.
- Get dogs off Lakewalk, also bikes and rollerblades and skateboard
- I appreciate city destination of parks available for dogs off leash - they need to run
- Keep dogs away from playgrounds meant for small children & Leif Erickson Park
- More dog parks
- more trail for dogs to be off-leash
- My biggest issue is loose dogs on trails - Hartley is the worst. I am approached by an unleashed dog almost every time I'm there - it keeps me away
- Provide doggie bags too

Disability

- Accessibility for persons w/ disabilities
- Get Arc Northland and Courage Center to plan facilities/programs with disabled in mind
- I would like to see more disability accessible areas in parks, some parks are very accessible, but improvements area always desired.
- In City parks, wheel chair access for the disabled
- These are 4 developmentally disabled adults who enjoy the out-of-doors. Primarily they love walk or enjoying flat, well maintained parks to sit in, especially Brighton Park and new east end lakewalk

Funding

- Although I support additional xxx rec opportunities, I can't afford any additional property taxes. I feel the transfer of money from other expenditures to be the way to fund these activities.
- Close and/or sell public Golf Course - use funds to implement parks and trails

- Community volunteers should be able to help their own community centers and building maintenance
- Duluth has some of the best outdoor parks and recreation in the state - City funds better used on streets/ sewers.
- Duluth park and recreation system needs ongoing budget and survey to prioritize the needs at each location
- Having people volunteer their time
- How about volunteer and or fund raising, we need more community involvement
- I believe city government employees should have paid health care only while on the job. In these tough times we must cancel "retired" benefits of health which they voted in themselves - shameful!
- I don't like my taxes to pay for something I can't use, that's why I say fix my street first.
- I feel the parks and recreation are important, but our city is facing such financial problems that some things must be put off until our finances are fixed

- I think it is essential that Duluth keep its parks and rec facilities maintained and operational. Duluth is know for its beautiful green spaces and it is one “free” resource that people of all social economical levels should be able to enjoy
- Keep neighborhood fire stations open
- Lease public owned recreation facilities
- Living in a town with another high (8%) property tax increase and a high fuel and beverage tax/retail tax is too much. If you don’t stop punishing citizens for poor management I am moving to the cities in two years
- My children and I love spending time in parks, willing to pay extra taxes, but not to the extent that it hurts my family and me (single/one income mom)
- No more taxes! Charge a fee for those who use the facilities
- no new taxes at this time - increase coordination with grass roots efforts by users and areas
- No new taxes or fees - we pay enough already
- Park & Rec is overall a lower priority need Focus on tax cuts, core services and economic development. Get rid of that foolish gay couples and domestic partner registry to save money
- Park and trail adoption programs sponsored by cit of Duluth
- Please stop frivolous spending money where its not needed. If its not broken don’t fix it.
- Police / Fire / Public safety priority
- Put up a sign in each park letting people know of improvements and where they can donate money
- Sell a voluntary “Dultuth Park Pass” to raise money
- Sell fish tank!
- Sell Spirit Mountain - use funds to implement parks and trails
- Sell the golf courses
- Seriously, Duluth is screwed up enough with high taxes and no business, wasting more monay on feel-good programs will only deepen the hole of economic and social despair
- The city has to put more resources into public areas including parks, it is one of most important assets, we are not doing a good job at it, look at other cities and states- OK city for instance
- The park point rec center should allow people to rent spaces during the Park Point Rummage Sale.They did that years ago. Superior does that for their sales, I go there.
- There is a very small group of people that make a large percentage of the money form our large events. Find a way to tax these people, I am broke
- To fund community center buildings make them multi-users friendly - encourage mommy groups to use and pay
- Volunteer opportunity
- We can’t support any significant increase in these programs because of the economy and the excessive tax load and other public fee costs
- We can save a ton of money by not catering to sports - just make some green space available - l let people use their imagination - street repair is more essential
- WE currently pay \$4500 in propo taz and have “no” street lights

- We have supported hockey excessively - we need to increase out support to other youth activities (eg. baseball, nordic skiing) and life sports (eg. Running, biking, xc skiing) to overcome ridiculous imbalance to hockey
- We need to cut city employees and not add any more
- We strongly believe and will support financially an extensive, well-maintained park and recreation system for all ages and interests
- You need to improve Indian Point campgrounds - a money maker
- Mowing and garbage pick up
- My friends and I routinely pick up litter (for miles) including Enger Park, Lake Walk, areas in the “old down town” - I wish we didn’t have to do it!!!
- My wife and I used to pick up trash at park every Sunday (but now old age prevents us) at 1/2 block from Fennel Park
- People littering, more volunteers?
- Provide garbage cans
- The city should provide trash containers in the parking area of the water front trail
- I can’t find any information online for an indoor playground for my 2 year old
- More communications - updated maps and lists of parks mailed to each household once every year

Garbage

- Add 4 more garbage cans - sometimes there is garbage all over
- At least pick up trash in the parks
- Garbage cans and trash pick up in all parks/trails
- Garbage cans at all parks, playgrounds and city public areas
- Get some of our prisoners out cleaning the parks!
- More garbage containers on trails and courses
- We visit Blackmer Park daily - frequent garbage but its picked up quickly - I appreciate that
- Would like to see trash cans for throwing doggy poop bags in all parks and trail heads

Information

- Accurate trail maps available on internet.
- Bring back the staff for the ice rinks on the weekends!!
- Communications

Kids

- I believe strongly in neighborhood Community Centers, need more centers for our young people.
- I think parks and rec programs for kids should be high priority, give the kids exposure to the outdoors in a safe, supervised setting and keep them out of trouble elsewhere.
- I think that programs and activities are key for children, to keep them active, out of trouble, and be a positive learning experience
- I would like to see more activities for the kids at the neighborhood parks inside and outside the buildings.
- In order to have healthy and educated children we must keep our parks etc. and libraries open to the max. time allowed by city codes
- Keep our community centers open for kids

- More toddler friendly equipment at all community parks
- Need a stronger push for Girl Scouts, Brownie, Boy Scout and Cub Scouts.
- Our youth have the biggest stake in the future
- Restore funding for after school and summer healthy safe activities - Staff: it takes a community to raise a child
- The emphasis should be more on youth, rather than adults recreation
- They community needs effective and well staffed after school programs to help prevent delinquency
- We need to keep programs for kids
- Continue work on expanding Lake Walk
- Enjoyed the lakewalk when I was able to
- Extending Lakewalk
- Full Lakewalk access to al persons
- I really appreciate the the lakewalk goes to 47th ave e now, I run section 3x week, wish it was lighted - don't feel safe when it is dark
- Lake walk needs to be finished in front of Beacon Pt
- Lakewalk extension into Lakeside was a great project.
- Please get that lake walk extension in between Beacon Point condos and the lake
- the lakewalk is a jewel
- Clean up around parks ie Skyline Blvd., Twin Ponds area, and west Skyline
- Clear trees from Skyline for view
- Draining, excavation at Chester Bowl both ponds
- Duluth parks are old and need to be maintained better
- Enger Tower needs repair
- Erosion at Skyline w of retaining wall
- Fix seven bridges as well as you can given the budget restraints
- Future renovation and improvements should be done on a volunteer basis - property tax already to high
- how about businesses or individuals sponsoring upkeep of buildings or parks

Lakewalk

- Biggest plus: development and continuing development of Lakewalk
- Complete the Lake walk trail to Brighton Beach
- Connect the lakewalk to scenic drive / hwybl.

Maintenance

- Ask neighborhoods to adopt parks, facilitate their 1st 2 meetings
- Better maintenance of Canal Park trail - needs trimming back
- Civic or special interest groups maintaining a park fo facility
- I think Irving needs renovation
- I think that you should be able to do some maintenance with the taxes we already pay
- Just keep them mowed and clean and maintain structures like stairs, railings, benches
- Lets take care of what we have - thanks

- Memorial park and community center need renovation, grounds need significant repair
- Merrit Park needs more play equipment, trees, picnic tables and pavilion for eating and shade
- Most parks seem pretty good and buildings have been functional
- Mow the grass!
- Neighborhood can “keep up” neighborhood park / rec areas
- Please clean up Skyline Drive and keep it clean for the beautiful sights
- Repair at dams, fix erosion along Chester Creek below skyline and near “Devils hole”
- Repair steps from E Superior st down to Tischer Creek/Congdon Park walking path
- Skyline parkway improvements needed
- Start maintaining what we have before adding new features to the mix! Or else get rid of old to start something new!
- Use volunteers more ie boysocuts, master gardeners, schools, garden clubs

- WE see many parks in Duluth needing much repair and upkeep - Enger tower for one
- Wheeler gardens around clubhouse is overgrown mess
- Why have a flower garden without any flowers? Our taxes should pay for something

Needs

- A community outdoor swimming pool
- A high priority should be given to Chester Bowl Ski Program - not just unique in Mn but the US.
- Add disc golf courses
- Chester Bowl needs a permanent position year round
- Community centers to offer family/ child activities
- Disc golf
- Get the baseball fields in west Duluth to the standard they have at Lake Park - Work with the west Duluth coaches to get this going
- Groom the cross-county ski trails as often as practical
- I live in the upper woodland area, I feel we don’t have a good park

with playground (only small play at community center, run down cobb school park), I feel unsafe at Hillside and would never take my kids there or the downtown area.

- I want Enger Tower and the Viking Ship to receive enough attention so that they are in good shape
- Improve pool facilities for community use
- People should be able to have hot dog and marshmallow fires in Park fire pits and on the beach
- Restrooms at neighborhood parks
- Skate (park?) at Wheeler is too small
- The city needs to cut to ensure that parks are available and advertised to all.
- The zoo needs help

Safety

- Concerned about safety on Lakewalk below Ericson Park on the hill where all the walks, bikers, and rollerbalders merge.(excessive speeds) Suggest separating trails.
- Ensure safe lighting
- I would really like to see safe walking areas in my immediate area - Sunchy

- | | | |
|----------------------------------------------------------------------------------------------------------------------------------------------------------------------------------------------------------------------------------------------------------------------------------------------------------------------------------------------------------------------------------------------------------------------------------------------------------------------------------------------------------------------------------------------------------------------------------------------------------------------------------------------------------------------------------------------------------------------------------------------------------------------------------------------------------------------------------------------------------------------------------------------------------------------------------------------------------------------|------------------------------------------------------------------------------------------------------------------------------------------------------------------------------------------------------------------------------------------------------------------------------------------------------------------------------------------------------------------------------------------------------------------------------------------------------------------------------------------------------------------------------------------------------------------------------------------------------------------------------------------------------------------------------------------------------------------------------------------------------------------------------------------------------------------------------------------------------------------------------------------------------------------------------------------------------------------------------------------------------------------------------------------|-----------------------------------------------------------------------------------------------------------------------------------------------------------------------------------------------------------------------------------------------------------------------------------------------------------------------------------------------------------------------------------------------------------------------------------------------------------------------------------------------------------------------------------------------------------------------------------------------------------------------------------------------------------------------------------------------------------------------------------------------------------------------------------------------------------------------------------------------------------------------------------------------------------------------------------------------------|
| <p>Road, Miller Mall area, Haines Road area</p> <ul style="list-style-type: none"> • More community police officers - specifically assigned to neighborhoods (less territory to cover) • Perhaps more lights along some of the walking trails • Police should patrol the waterfront area - much broken glass in parking lot • Problems with noise in community parks, midnight use, adults using children's facilities, scaring kids away • Speed bumps into streets in parks and walking path on side of street • Street lighting for night walking • We don't use the park close to our home because of gangs using Portland square. We used to its das to see we have lived here 25 years <p><i>Trails and Sidewalks</i></p> <ul style="list-style-type: none"> • Add designated bike lanes to major streets • Better design in neighborhoods so you can walk safely | <ul style="list-style-type: none"> • Continued expansion of bike/ walking trails to connect all parts of the city • Connect all major parks by a designated bike rout • Continue to develop bike/pedestrian corridors and safe routes to schools • I greatly appreciate the beauty of the Chester Creek trails / area • I see nothing here for ATV or snowmobiling, both groups pay state fee but are not mentioned and could provide much needed \$\$ for trail maintenance. • I walk the gravel extension between the ledges and the lakes and strongly recommend it to others • Improvements to trails to prevent erosion and negative environmental impacts. • Keep the trails always - Amazing resource • LSHT wilderness corridors in Duluth (shouldn't be on streets) • More bike paths and routes on the roadway for easier and safer bike commuting • More trails cut and maintained at Piedmont and Hartley Ski parks | <ul style="list-style-type: none"> • Need to add sidewalks for bike/ pedestrians along newly paved Rice Lk Rd • Paved trails in Harthy and other parks out east • scenic by-way/multi-modal / peds/ bikes/ cars/ tour groups / over-looks a priority keep all open • Sidewalk safe for children in busy areas • Sidewalks on Haines, Highland and Skyline • Snowmobile and ATV trails • The mall area (extended) need to be made walkable, walking and biking is very bad and dangerous, 1 to 2 miles in every direction • The RR walk is a jewel • Trail along east bank of the Lester River from picnic grounds up stream • Walking / bike trails are great now • Would like to have extension / connection to Munger Trail at 27th Ave w / Heritage Center Area or the downtown • Would like to see better bike paths / lanes. |
|----------------------------------------------------------------------------------------------------------------------------------------------------------------------------------------------------------------------------------------------------------------------------------------------------------------------------------------------------------------------------------------------------------------------------------------------------------------------------------------------------------------------------------------------------------------------------------------------------------------------------------------------------------------------------------------------------------------------------------------------------------------------------------------------------------------------------------------------------------------------------------------------------------------------------------------------------------------------|------------------------------------------------------------------------------------------------------------------------------------------------------------------------------------------------------------------------------------------------------------------------------------------------------------------------------------------------------------------------------------------------------------------------------------------------------------------------------------------------------------------------------------------------------------------------------------------------------------------------------------------------------------------------------------------------------------------------------------------------------------------------------------------------------------------------------------------------------------------------------------------------------------------------------------------------------------------------------------------------------------------------------------------|-----------------------------------------------------------------------------------------------------------------------------------------------------------------------------------------------------------------------------------------------------------------------------------------------------------------------------------------------------------------------------------------------------------------------------------------------------------------------------------------------------------------------------------------------------------------------------------------------------------------------------------------------------------------------------------------------------------------------------------------------------------------------------------------------------------------------------------------------------------------------------------------------------------------------------------------------------|

General Support

- Duluth is a mecca for parks - an outdoor gold mine
- Duluth parks are fantastic
- Harrison is wonderful
- I am most pleased with park and rec facilities I use - thank you
- I love Brighton Beach, Magney Snikely Western Water front trail
- I love Duluth for its green spaces and my work is related to recreating - thank you for doing this!
- I think Duluth city does a pretty good job - I've enjoyed several of the areas mentioned and am always impressed. Course I just moved up here 4yrs ago from Texas
- I think your doing a great job! Love my trails!
- Job well done in tough financial times
- Parks and recreation is very important to the City and is part of what makes Duluth unique
- Thanks for sending out this survey, I hope it helps you out
- The park system is a critical piece of Duluth's quality of life, it is the

reason I chose to buy a home here, I use the parks everyday - NO MORE CUTS!!!

- The parks and Natural areas are what makes Duluth great, I am happy to pay higher taxes to help improve them
- This is a very large - sq miles - city for just 80-90000 people, I think you are doing a great job
- We love Duluth's parks and want them to be a priority, we want to support them - they are worth it
- Xc Ski trails and maintenance is excellent - keep it up!

Miscellaneous

- Get zoo reaccredited and upgraded
- Improve Skyline blvd - viewing spots, accessibility, etc.
- Upgrade Chester Bowl and memorial parks
- 13th ave east and 12th st needs to be paved - muddy now.
- Adding the Miller Creek Disc Golf Course to the list of managed facilities - its condition, the amount of litter, and erosion are terrible

- Biggest minus: allowing the private sector to continue to increasingly block view of Lake (our biggest asset!)
- Continue senior citizen centers and all the youth centers we can afford
- DAHA with the travel teams has destroyed our hockey recreation program
- Do park expansion
- Don't rent park point shelters - leave them open to public - open bathrooms on park point
- Due to advanced age and disabilities we seldom use the xxxx facilities, but future generations should have the same opportunities we and our children enjoyed through the years
- Due to age - I cannot use most of these programs
- Duluth has too many parks
- Duluth is cutting the wrong programs - focus on core facilities and programs, get rid of crap like Sister Cities Program
- Eliminate under-used rec centers (ie. Norton Park, Riverside, Piedmont, etc.) and improve used facilities (ie Irving, Chcc, Portman)

- Employ youth and seniors to work in parks, trails, etc. as in blds
- Families/ kids shouldn't need the city to entertain them
- Here at Miller Creek Condo's on Sunbee and Hainer, many of us wonder when Sunbee Road will be free of pot holes, etc. let alone a sidewalk to walk on
- I like walking the north west paddage over to the auditorium but now am concerned about the harm from teenagers, etc.
- I would like to see all areas of our city treated equally - not just the east end
- I would like to see more partnerships between the city of Duluth and community groups in addressing recreation issues. I don't think that continue property tax increases should be relied on for revenue.
- Judy Gibbs and her volunteers have done a massive job repairing city trails - thank you
- Keep Park Point natural and restore pt (?)
- let nature parks remain "nature"
- More porta potties
- More things to do for seniors 65 and older - like donations to get around to these places.
- Need to put efforts into job creation, If that come from jobs related to this survey - great, No jobs, no people, no need for parks.
- On call regarding a hazard fence, too many lights left on all night - these reports where handled quickly at Merritt Park - Thanks
- Park Point Beach and Beach house
- Portland Square Park has only one portable restroom in summer - add
- Senior activities
- Shame on the City of Duluth! Please do not sell any more park land, ie park point lots - If it looks like a duck and quacks like a duck - it's a duck, the park point lots are in the park!
- Shore up our community parks, those that serve Duluth residents
- Stop the in the city deer hunt, we l like nature on trail we enjoy Hartley nature and Lakewalk and ball parks.
- The Irving comm center is a vital part of the community. It has so many different uses and it would be a great disservice to close the facility
- The one existing lakewalk ports potty was out of TP on a Sat last weekend - ugh!
- The two softball fields af Wade should be made into 3 fast pitch fields!!!
- There is a need fo a playground, picnic tables and grills along the lakd and London Rd./Superior Street
- Use volunteers, groups for upkeep / supervision, ie Friends of tennis, Chester Bowl, etc.
- We already have many fine facilities and programs - we don't need more
- We moved here 9 years ago, treasure beautiful trails and nature, just short walk from door, let not take it for granted or let it go
- We need a park director with vision

ON-LINE SURVEY

An on-line survey was available on the City of Duluth's web site during December, 2009. 80 people filled out the on-line questionnaire. Unlike the mailed survey the results are not statistically valid as the on-line survey is not of a randomly selected proportion of the residential population and there is not control on the number of times a person completes the survey. However, the results are still beneficial as they represent people who took the time to complete the questionnaire and therefore can be assumed to be interested in parks and recreation and/or Duluth civic issues. Also, respondents to the on-line survey were generally a younger population than the respondents to the mailed survey.

1. How often do you and members of your household visit Duluth parks, recreation facilities or trails?

		Response Percent	Response Count
At least once a week	<input type="text" value="84.2%"/>	84.2%	64
1-3 times a month	<input type="text" value="7.9%"/>	7.9%	6
1-10 times a year	<input type="text" value="7.9%"/>	7.9%	6
Never (Please skip to question 3)		0.0%	0
answered question			76
skipped question			1

2. Which parks, trails, recreation facilities and activities do you or members of your household use? Please check all that apply.

		Response Percent	Response Count
Neighborhood Parks - Parks closest to your home.	<input type="checkbox"/>	71.1%	54
Community Parks– Larger parks designed to serve the community such as Canal Park, Chambers Grove, Chester Bowl, Leif Erickson, Lincoln, Park Point and Wheeler Athletic Complex.	<input type="checkbox"/>	86.8%	66
Regional Parks - Large parks and natural areas such as Bayfront, Brighton Beach, Enger, Fairmont, Fond du Lac, Hartley, Hawk Ridge, Lester/Amity, Magney/Snively and Spirit Mountain.	<input type="checkbox"/>	90.8%	69
Special Use Areas - Unique parks and recreation facilities such as Arlington Soccer Complex, Rose Garden, Indian Point Campground,	<input type="checkbox"/>	56.6%	43
Passive Parks - Smaller less developed open spaces such as Corner of the Lake, Fond du Lac Park Square, Heritage Garden, Lake Place Plaza, Lake Superior Plaza, Old Main, Pennel, Stanley, University, etc.	<input type="checkbox"/>	23.7%	18
Lakewalk - The linear park and trails running along Lake Superior from Canal Park to the east.	<input type="checkbox"/>	84.2%	64

(95)

COMMUNITY
INPUT

Other trails - Chester Creek, Hartley, Hawk Ridge, Keene Creek, Kingsbury Creek, Lester/Amity, Lincoln, Magney/Snively, Mission Creek, Park Point, Tischer Creek, Western Waterfront, etc.	<div></div>	81.6%	62
Community center buildings located in city parks such as Portman, Woodland, Morgan Park, etc.	<div></div>	31.6%	24
Indoor recreation facilities such as Washington Center and Heritage Sports Center.	<div></div>	14.5%	11
Organized recreation programs offered by the City, schools, non-profits or others.	<div></div>	25.0%	19
Other (please List)	<div></div>	9.2%	7
Indoor recreation facilities such as Washington Center and Heritage Sports Center.	<div></div>	14.5%	11
Organized recreation programs offered by the City, schools, non-profits or others.	<div></div>	25.0%	19
Other (please List)	<div></div>	9.2%	7
answered question			76
skipped question			1

3. Organized recreation programs and activities offered by the City, schools, non-profits and others were reduced. Are there gaps in recreation programs or activities needs that are not currently being met?

		Response Percent	Response Count
No. Recreation program offerings and activities meet my needs. Add any comment below.	<input type="text"/>	21.9%	16
Not applicable/No response	<input type="text"/>	52.1%	38
Yes. There are gaps in program offerings. Please indicate program or activity needs below.	<input type="text"/>	26.0%	19
Comments/Program or Activity Needs			23
answered question			73
skipped question			4

(97)

COMMUNITY
INPUT

4. Park maintenance services and recreation facility replacement have been reduced. Have these changes affected you or your household?		
	Response Percent	Response Count
No. There has been no affect upon my use of the parks or neighborhood/community quality. Add any comments below.	35.6%	26
Not applicable/No response	13.7%	10
Yes. There have been affects upon use of parks and neighborhood/ community quality. Please indicate maintenance or replacement needs below.	50.7%	37
Comments/Maintenance or Replacement Needs		33
<i>answered question</i>		73
<i>skipped question</i>		4

5. How often do you bicycle in Duluth?		
	Response Percent	Response Count
Never	19.2%	14
Daily	24.7%	18
Once/week	37.0%	27
Once/month	19.2%	14
<i>answered question</i>		73
<i>skipped question</i>		4

6. Do you bicycle in the winter?

	Response Percent	Response Count
Yes <input type="text"/>	28.8%	21
No <input type="text"/>	71.2%	52
<i>answered question</i>		73
<i>skipped question</i>		4

7. Do you ever bicycle to work?

	Response Percent	Response Count
Yes <input type="text"/>	52.8%	38
No <input type="text"/>	47.2%	34
<i>answered question</i>		72
<i>skipped question</i>		5

8. Do you mountain bike on unpaved trails?

	Response Percent	Response Count
Yes <input type="text"/>	52.8%	38
No <input type="text"/>	47.2%	34
<i>answered question</i>		72
<i>skipped question</i>		5

(99)

COMMUNITY
INPUT

(100)

COMMUNITY
INPUT

9. How satisfied are you with the following elements of the Duluth parks and recreation system and what priority does the element hold for your household in the future?

Current Rating

	Satisfied	Unsatisfied	Response Count
Neighborhood parks	87.9% (51)	12.1% (7)	58
Community parks	87.3% (48)	12.7% (7)	55
Athletic fields	88.9% (40)	11.1% (5)	45
Regional recreation facilities	88.0% (44)	12.0% (6)	50
Natural areas/nature parks	90.2% (55)	9.8% (6)	61
Biking trails	45.8% (27)	54.2% (32)	59
Mountain biking trails	71.2% (37)	28.8% (15)	52
Walking trails	86.2% (50)	13.8% (8)	58
Cross Country ski trails	81.0% (47)	19.0% (11)	58
Lakewalk linear park	90.9% (50)	9.1% (5)	55
Community center buildings	69.8% (30)	30.2% (13)	43
Park maintenance and upkeep	56.4% (31)	43.6% (24)	55
Indoor recreation	80.0% (32)	20.0% (8)	40
Indoor ice skating rinks	94.7% (36)	5.3% (2)	38
Outdoor ice skating rinks	67.4% (29)	32.6% (14)	43
Youth recreation programs	61.0% (25)	39.0% (16)	41
Adult recreation programs-Ages 18-54	86.8% (33)	13.2% (5)	38

Senior recreation programs-Ages 55+	82.9% (29)	17.1% (6)	35
Special events	97.1% (34)	2.9% (1)	35
Communications	60.5% (23)	39.5% (15)	38
Priority for Future			
	High Priority	Low Priority	Response Count
Neighborhood parks	82.5% (47)	17.5% (10)	57
Community parks	87.5% (49)	12.5% (7)	56
Athletic fields	39.6% (19)	60.4% (29)	48
Regional recreation facilities	64.0% (32)	36.0% (18)	50
Natural areas/nature parks	89.5% (51)	10.5% (6)	57
Biking trails	75.4% (43)	24.6% (14)	57
Mountain biking trails	52.8% (28)	47.2% (25)	53
Walking trails	76.8% (43)	23.2% (13)	56
Cross Country ski trails	84.2% (48)	15.8% (9)	57
Lakewalk linear park	75.0% (39)	25.0% (13)	52
Community center buildings	38.3% (18)	61.7% (29)	47
Park maintenance and upkeep	74.1% (40)	25.9% (14)	54
Indoor recreation	21.4% (9)	78.6% (33)	42
Indoor ice skating rinks	7.3% (3)	92.7% (38)	41
Outdoor ice skating rinks	53.2% (25)	46.8% (22)	47
Youth recreation programs	69.6% (32)	30.4% (14)	46

(101)

COMMUNITY
INPUT

Adult recreation programs-Ages 18-54	25.6% (11)	74.4% (32)	43
Senior recreation programs-Ages 55+	31.7% (13)	68.3% (28)	41
Special events	24.3% (9)	75.7% (28)	37
Communications	56.8% (21)	43.2% (16)	37
		<i>answered question</i>	65
		<i>skipped question</i>	12

(102)

COMMUNITY
INPUT

10. We would like your opinion on key issues facing parks and recreation in Duluth.

	Strongly Agree	Agree	Not Sure	Disagree	Strongly Disagree	Response Count
Duluth's parks, trails, recreation opportunities, and public open spaces are key elements in quality of life and the quality of the community.	94.0% (63)	4.5% (3)	1.5% (1)	0.0% (0)	0.0% (0)	67
Duluth should assure that neighborhood scale parks and recreation facilities are within easy walking distance of most people's home.	62.7% (42)	26.9% (18)	6.0% (4)	4.5% (3)	0.0% (0)	67
Duluth should assure that high quality parks and recreation facilities are within an easy drive of most people's homes.	52.2% (35)	40.3% (27)	7.5% (5)	0.0% (0)	0.0% (0)	67
					answered question	67
					skipped question	10
Duluth should focus on connecting parks and neighborhoods with trails and bikeways.	67.2% (45)	19.4% (13)	7.5% (5)	4.5% (3)	1.5% (1)	67
					answered question	67
					skipped question	10

(103)

COMMUNITY INPUT

11. We would like your opinion on community center buildings.					
	Renovate and open all the community center buildings.	Renovate and open some buildings and remove some buildings.	Remove all community center buildings.	Not sure/no opinion	Response Count
Several community center buildings in parks are currently closed due to budget constraints and the deteriorated condition of the buildings. What option for dealing with these buildings do you prefer?	13.4% (9)	62.7% (42)	3.0% (2)	20.9% (14)	67
				<i>answered question</i>	67
				<i>skipped question</i>	10

12. Which of the following improvements/additions to the Duluth parks and recreation system would you be willing to support?

	Great support	Marginal support	No support	Response Count
Additions to and extension of bike/walk trails	82.1% (55)	16.4% (11)	1.5% (1)	67
Renovation of existing neighborhood parks	65.2% (43)	31.8% (21)	3.0% (2)	66
Renovation of existing community center buildings	30.3% (20)	50.0% (33)	19.7% (13)	66
Improvements to existing passive, nature parks	59.1% (39)	40.9% (27)	0.0% (0)	66
Improvements to existing athletic fields	24.2% (16)	59.1% (39)	16.7% (11)	66
City sponsored recreation programs and activities	37.3% (25)	47.8% (32)	14.9% (10)	67
Expanded park maintenance	59.1% (39)	40.9% (27)	0.0% (0)	66
			<i>answered question</i>	67
			<i>skipped question</i>	10

(105)

COMMUNITY
INPUT

13. How many people in the following age categories live in your household?

	Response Average	Response Total	Response Count
0-5 years	1.35	27	20
6-11 years	1.31	21	16
12-19 years	0.93	14	15
20-29 years	1.94	35	16
30-39 years	1.52	38	25
40-49 years	1.38	40	29
50-64 years	1.50	33	22
65+ years	0.78	7	9
		<i>answered question</i>	67
		<i>skipped question</i>	10

14. Please list any other parks and recreation improvements you would like to see in Duluth or any other comments you would like to make.

Response
Count

37

answered question

37

skipped question

40

(107)

COMMUNITY
INPUT

COMMUNITY BENCHMARKS

TABLE 3.1

HOW DOES DULUTH'S PARK SYSTEM MEASURE UP?

Benchmarking Duluth's Park System against 11 other similar sized cities in Minnesota helps assess how well the city serves its residents compared to other cities. The comparison is useful in identifying significant deficiencies or excesses, but results must be considered in light of other local factors. Every city is unique, resulting in unique park systems established by historic development patterns, climate, local recreation trends, natural resources, and a host of other factors. How communities measure and define park system elements also affects the comparison. For example, one city may include all bike lanes when measuring miles of

CITY NAME	Duluth	Woodbury	Blaine	Bloomington
City area in square miles	68	36	34	38
Total City population	84,167	57,000	55,540	84,347
Acreage of City parks & open space per 1000 population	131	37	22	46
City Parks/parkland acreage	7,400	1,672*	1,222	3,884
Number of parks	105	48	61	71+18 ponds
Number of parks per 10,000 people	12.5	8.42	11	8
Number of community parks	20	5	9	11
Number of community playfield parks	9	2**	6	3
Number of neighborhood parks	28	36	23	23
Number of tot lot or mini-parks	5	3***	23	18
School athletic field acreage (under agreement with City)	5	27 baseball/softball fields, 27 soccer/football fields	N/A	341
Special use facilities acreage (golf courses, ice arenas, community centers, etc.)	400	220	0	188
Active City parks space acreage	1,300	363	396-32%	725-18%
Passive City park & open space acreage	6,100	1,743	826	3,159
Total City parks & open space acreage (Owned or maintained by City & with public access)	7,400	2,107	1,222	4,225
Total non-City parks & open space acreage (State, Regional, Private with public access)	3,200	N/A	140	4,707
Total City and non-City Parks & open space acreage	11,600	2,107	1,362	8,932
Acreage of all parks and open space as a percent of the City	25%	9%	6%	37%
* Includes Special Use Parks, Excludes open space **Woodbury's athletic fields are contained in two community parks, Ojibway and Bielenberg ***Includes French Regional Park Number of recreation facilities does not include non-city facilities, such as school district fields, tennis courts, etc.				

(108)

trails while another may only count off-street pathways. The table below is a sampling of the comparison.

Key findings of the Community Benchmarking conclude that Duluth has significantly more park land per capita, less public access to school fields, significantly less paved trails and bikeways, and more unpaved trails, fewer large soccer/football fields, and fewer indoor community recreation facilities.

Burnsville	Eagan	Eden Prairie	Maple Grove	Plymouth	St. Cloud	Rochester
28	34	36	36		41	56
61,355	65,000	64,846	60,867	72,000	66,855	100,500
29	22	16	20	14	22	24
1,800	1,350	2,500	1,238	868	1,483	2,440
78	54	44	57	51	95	104
13	8	7	10	7.1		
27	4	6	1	5	15	12
N/A	4	1	15	9	2	6
27	43	21	16	28	80	68
15	N/A	9	11	6	N/A	5
22 Infields	100	20	440	N/A	N/A	N/A
27	20	1,400	20	14	50	650
645-18%	500-37%	1,000-40%	750-60%	370	515	1510
1,155	850	1,500	488	481***	969	930
N/A	1,450	2,520	1,678	868		
1,460	3000	1,780	1,747	447	N/A	312
3,260	4,450	4,300	3,425	1,345	1483	2,752
18%	20%	19%	15%	19%	7%	8%

CITY NAME	Duluth	Woodbury	Blaine	Bloomington
Miles of paved trails (off road)	5	120	54	13.18
Miles of striped bike lanes	0	0	2.78	1
Miles of sidewalk	380	N/A	70	233
Miles of unpaved trails	100	N/A	0	33
Miles of bike routes (signed)	0		2.78	
Number of tennis courts	16	35	11	53 City / 24 School District
Number of tennis courts per 10,000 residents	2	6	2	9
Number of outdoor basketball courts	20	4 Half-Court 16 Full Court	32	14 Full Court 15 Half Court
Number of outdoor basketball courts per 10,000 residents		3.5	5.8	3.4
Number of outdoor ice rinks	15	7 hockey / 7 general skate	6 hockey / 4 general skating	16 Lighted hockey/ 15 general
Number of indoor ice rinks per 10,000 residents		2.4	N/A	.36
Number of large soccer/lacrosse/football fields	11	26	14	38
Number of adult baseball fields	1	47 Combined	3	8
Number of youth baseball fields	15		3	9 (baseball/softball)
Number of adult softball fields	4		7	4
Number of youth softball fields	10		14	above
<i>* Includes Special Use Parks, Excludes open space</i> <i>**Woodbury's athletic fields are contained in two community parks, Ojibway and Bielenberg</i> <i>***Includes French Regional Park</i> <i>Number of recreation facilities does not include non-city facilities, such as school district fields, tennis courts, etc.</i>				

Burnsville	Eagan	Eden Prairie	Maple Grove	Plymouth	St. Cloud	Rochester
100 miles of trails & sidewalks	98 (parks and blvd)	102	City Park Trail – 44 City ROW Trail – 50 3 Rivers Trail - 16	N/A	20	92
	N/A	0	N/A	N/A	N/A	3
above	31	84		N/A	13	500
6.35	6	10	City – 1 3 Rivers - 6	40	N/A	14
2 miles by Dakota County	2	0	N/A	100	N/A	3
31	32	52	45 including school/ parks	50	19	40
5	5	48	7.5	7	3	4
35	8 +18 multi-purpose	25 courts	31 including school/ parks	7	32	15
6	4	4	5	1		
16 Lighted hockey/ 15 general	15 hockey / 14 general skate	9 hockey / 9 free skate	12 hockey / 17 general	11 hockey	16	7
6.4	.3	.4	.32	.2	.3	.6
53	12 (potential for others as needed)	15 large and 36 small	19 Regularion (1 lighted)	32	35	27
1	2	5 - 90ft. fields	58 Multi-use (4 lighted)	42 Adult combined baseball/softball	26	4
7	2	32	12 Baseball (1 lighted)	10 youth combined baseball/softball	N/A	32
12	17	6		42 Adult combined baseball/softball	N/A	11
36 SB/BB	40 (also used for youth baseball)	20		10 youth combined baseball/softball	N/A	10

(111)

CITY NAME	Duluth	Woodbury	Blaine	Bloomington
Key regional and community park and recreation facilities (list):	Wade/Wheeler Baseball/Softball Complex, Lakewalk, Chester Bowl Ski Hill, Enger Tower Park, Enger Park & Lester Park Golf Courses, Lake Superior Zoo, Park Point Recreation Area, Rose Garden, Arlington Soccer Complex, Jean Duluth Soccer Complex.	Central Park, Bielenberg Sports Center, Ojibwe Park, Tamarack Nature Center	National Sports Center, TPC-Twin Cities	Valleyview and Kelly Playfields, Hyland Bush Anderson Lakes Regional Parks, Bloomington Center for the Arts, Bloomington Family Aquatic Center, Bloomington Ice Garden, Bush Lake Beach, Dred Scott Playfields, Dwan Golf Course, Hyland Greens Golf course, Pond-Dakota Mission House
Indoor Recreation Facilities (list):	Washington Center, Fryberger Arena	Central Park, Bielenberg Ice Arena, Bielenberg Field House, 4 Park Buildings	6 Park Buildings	Bloomington Center for the Arts, Bloomington Ice Garden, Pond-Dakota Mission House, Old Town Hall, Creekview Senior Center, Armory
<i>* Includes Special Use Parks, Excludes open space</i> <i>**Woodbury's athletic fields are contained in two community parks, Ojibway and Bielenberg</i> <i>***Includes French Regional Park</i> <i>Number of recreation facilities does not include non-city facilities, such as school district fields, tennis courts, etc.</i>				

Burnsville	Eagan	Eden Prairie	Maple Grove	Plymouth	St. Cloud	Rochester
Murphy Hanranhan Regional Park 160 Acres, Black Dog U.S. Fish & Wildlife Preserve 1300 acres	Fort Snelling State Park, Lebanon Hills Regional Park (Dakota Co), Historic Holz Farm Park, Caponi Art park, Lexington Diffley Athletic Fields, Northview Park Athletic Fields, Central Park (associated with Comm Ctr), Patrick Eagan Park natural area, Cascade Bay Aquatic Park	Round Lake, Staring Lake, Riley Lake and Miller Community Parks. Bryant Lake and Anderson Lake Regional Parks. MN Valley National Wildlife Refuge.	Maple Grove Community Center, Weaver Lake Community Beach, Elm Creek Arboretum, Elm Creek Park Reserve (3 Rivers), Fish Lake Regional Park (3 Rivers), Eagle Lake Regional Park (3 Rivers), Medicine Lake Regional Trail (3Rivers)	French Regional Park, Plymouth Ice Center, Hilde Performance Center, Millennium Garden, Plymouth Creek Center, Nature Canyon, Plymouth Skate Park, Egan Dog Park; Luce Line Trail	Municipal Athletic Complex, Whitney Recreation Center, Riverside Regional Park, Wilson Regional Park, Lake George Municipal Complex.	Soldier's Field Park; Rochester Baseball Complex; Faud Mansour Soccer Complex; McQuillian Softball Complex; Watson Youth Sport Complex
Ice Arena, Lake Alimagnet Art Center	Eagan Community Center, Eagan Civic Arena, Eagan Art House	Eden Prairie Community Center (City facility), Lifetime Fitness Clubs (Private - 2 facilities)	Pool, Play Apparatus, Gymnasium, Ice Arena, Teen Center		Municipal Athletic Complex; Whitney Senior Center, Whitney Recreation Center,; Lake George Municipal Complex	Graham Ice Arena (4 rinks); Rochester Recreation Center (2 rinks, pool and gym) National Volleyball Center (8 courts); Regional Sports Center (2 gyms, indoor track)