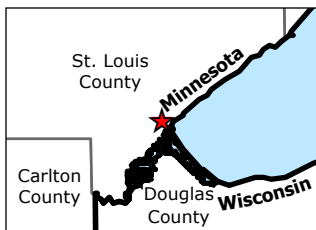
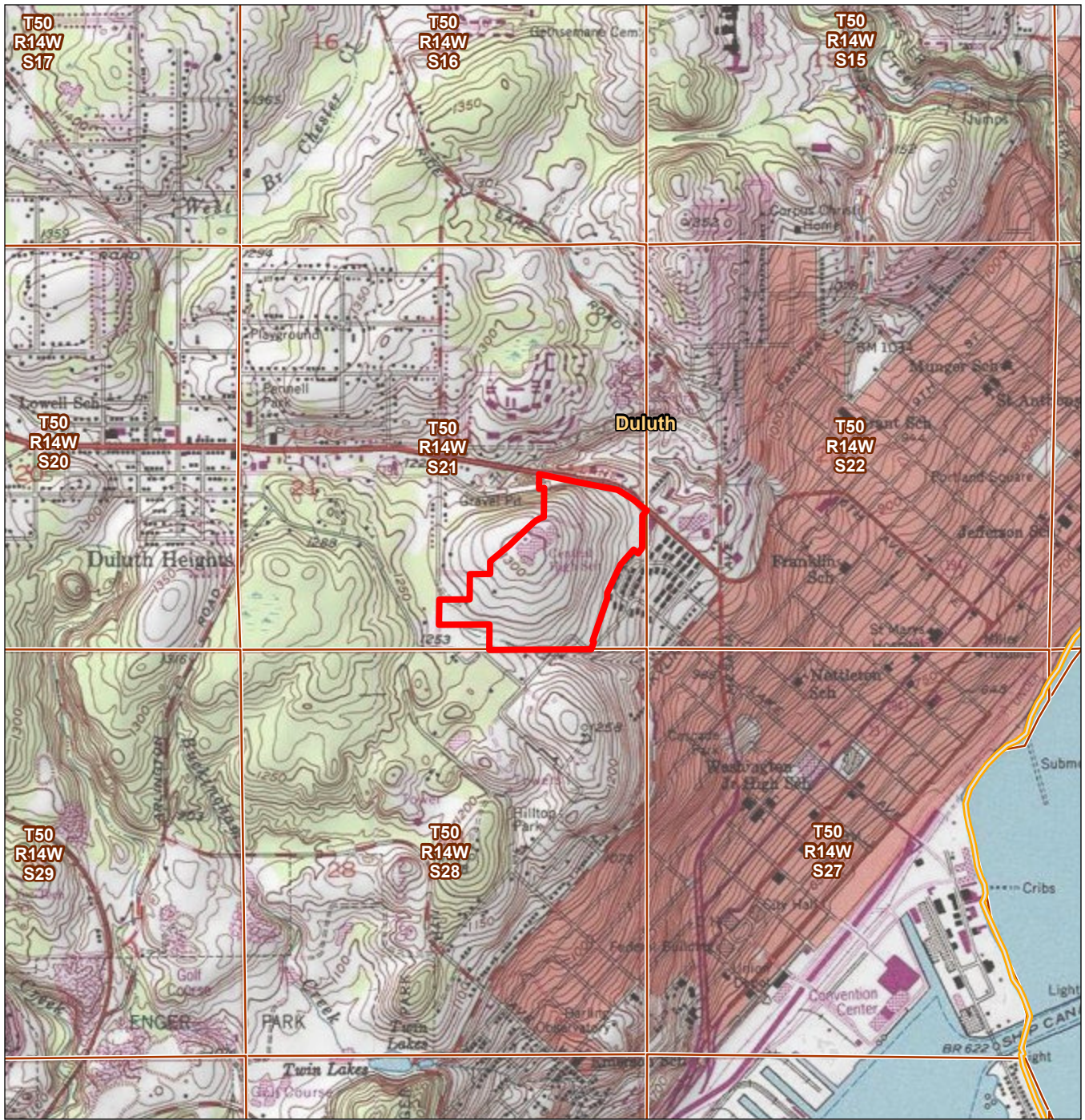


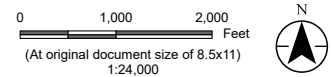
# **Appendix A**

## **Figures**

V:\2277\active\227706270\03\_data\gis\_cad\gis\proj\leaw\leaw.aprx Revised: 2023-11-14 By: kjmueller



- Legend**
- AUAR Area
  - Municipal Boundary
  - Township, Range & Section Boundary



*Project Location* Prepared by KJM on 2023-11-14  
 T69N, R50W, S21  
 Duluth, St. Louis Co., MN

*Client/Project* 227706270  
 City of Duluth

Duluth Central High School Redevelopment Site  
 Scoping EAW

*Figure No.*

1

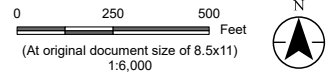
*Title*

**Project Location USGS Topo Map**





**Legend**  
 AUAR Area  
 Parcel Boundary



*Project Location* T69N, R50W, S21 Duluth, St. Louis Co., MN  
 Prepared by KJM on 2023-11-14

*Client/Project* City of Duluth  
 Duluth Central High School Redevelopment Site  
 Scoping EAW  
 227706270

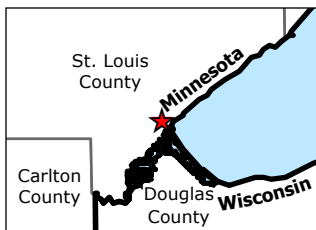
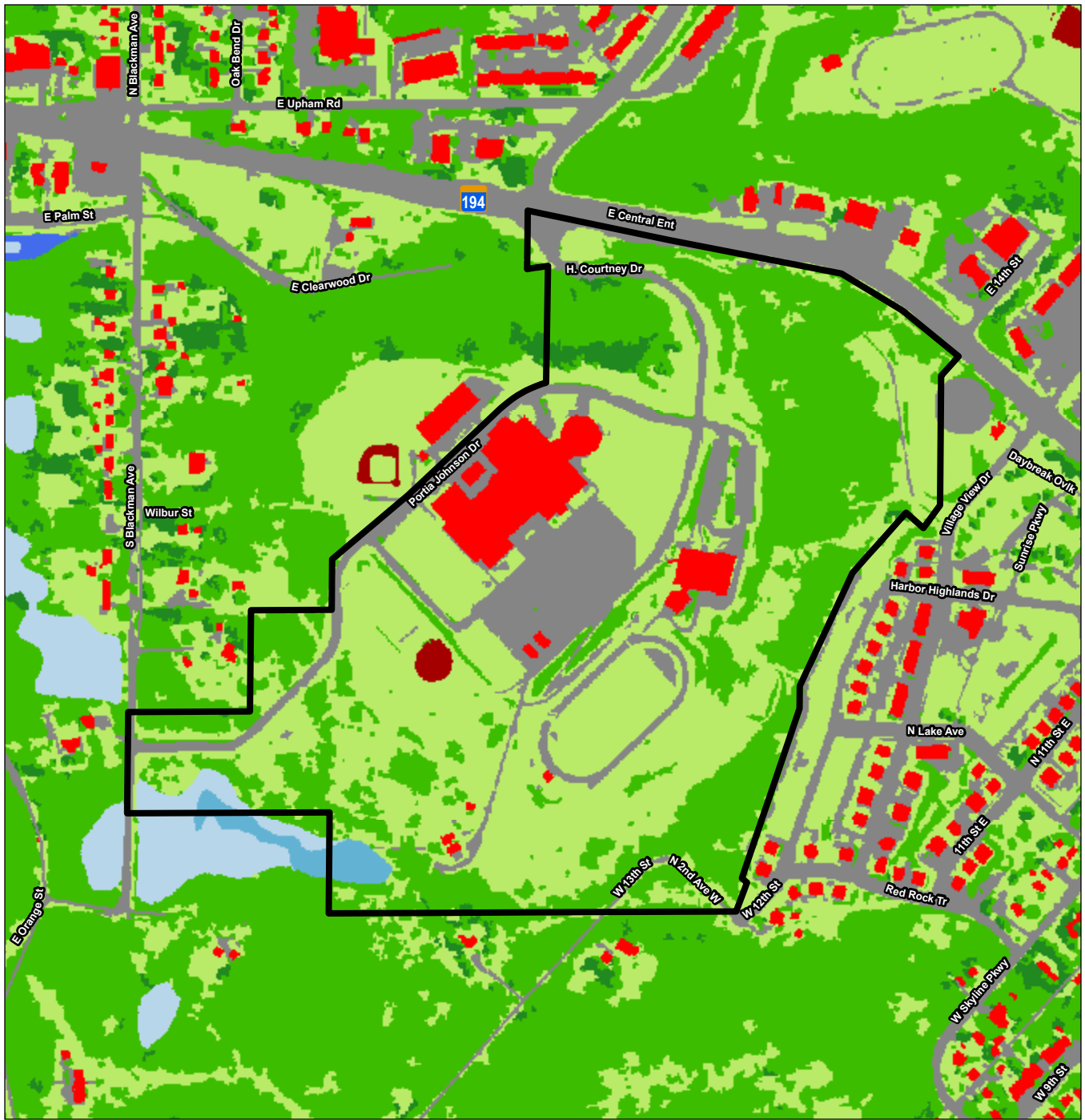
*Figure No.* 2

*Title* Project Location Aerial Map

**Notes**  
 1. Coordinate System: NAD 1983 HARN Adj MN St Louis CS96 Feet  
 2. Data Sources: Stantec, City of Duluth, St. Louis Co., MnDOT  
 3. Background: 2023 St. Louis Co.

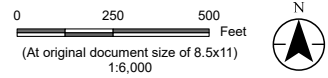
V:\2277\active\227706270\03\_data\gis\_cad\gis\pro\leaw\leaw.aprx Revised: 2023-11-14 By: kjmueller

V:\2277\active\227706270\03\_data\gis\_cad\gis\proj\leaw\leaw.aprx Revised: 2023-11-14 By: kjmueller



**Notes**  
 1. Coordinate System: NAD 1983 HARN Adj MN St Louis CS96 Feet  
 2. Data Sources: Stantec, MnGeo  
 3. Background: UMN Duluth 1-meter Land Cover 2016

- Legend**
- AUAR Area
  - Duluth Land Cover 2016**
  - Grass/Shrub
  - Bare Soil
  - Buildings
  - Roads/Paved Surfaces
  - Lakes/Ponds
  - Deciduous Tree Canopy
  - Coniferous Tree Canopy
  - Emergent Wetland
  - Forested/Shrub Wetland

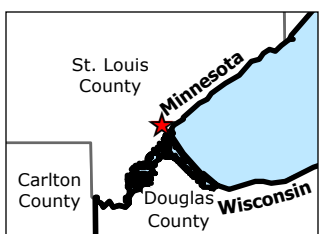
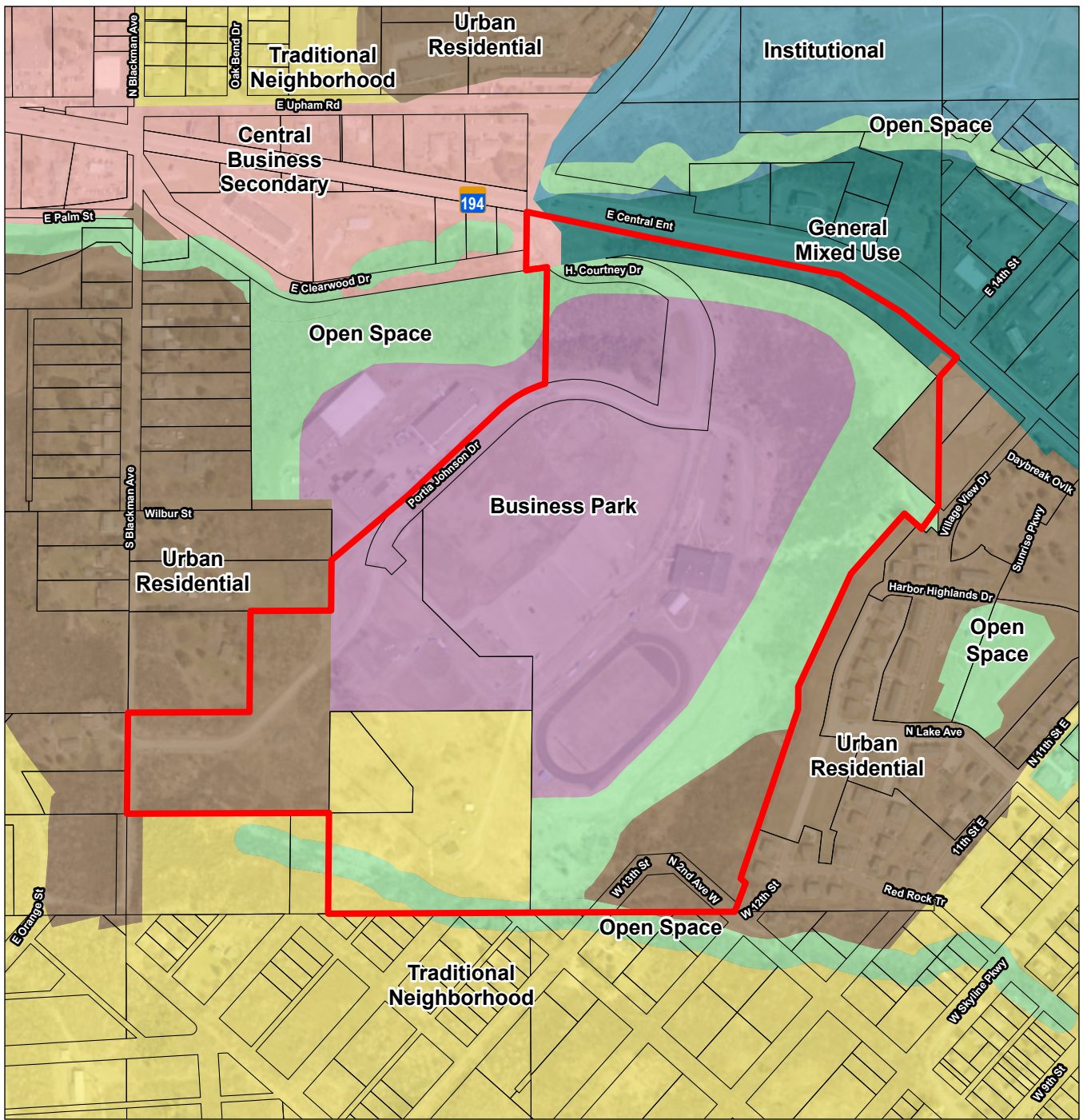


*Project Location* T69N, R50W, S21 Duluth, St. Louis Co., MN  
 Prepared by KJM on 2023-11-14

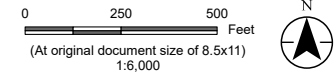
*Client/Project* City of Duluth 227706270  
 Duluth Central High School Redevelopment Site  
 Scoping EAW

*Figure No.* 3  
*Title* Land Cover





- Legend**
- AUAR Area
  - Parcels
- Future Land Use**
- Business Park
  - Central Business Secondary
  - General Mixed Use
  - Institutional
  - Open Space
  - Traditional Neighborhood
  - Urban Residential



*Project Location*  
T69N, R50W, S21  
Duluth, St. Louis Co., MN

*Client/Project*  
City of Duluth  
Duluth Central High School Redevelopment Site  
Scoping EAW

*Figure No.*  
**4**

*Title*  
**Future Land Use**

*Prepared by* KJM on 2023-11-14

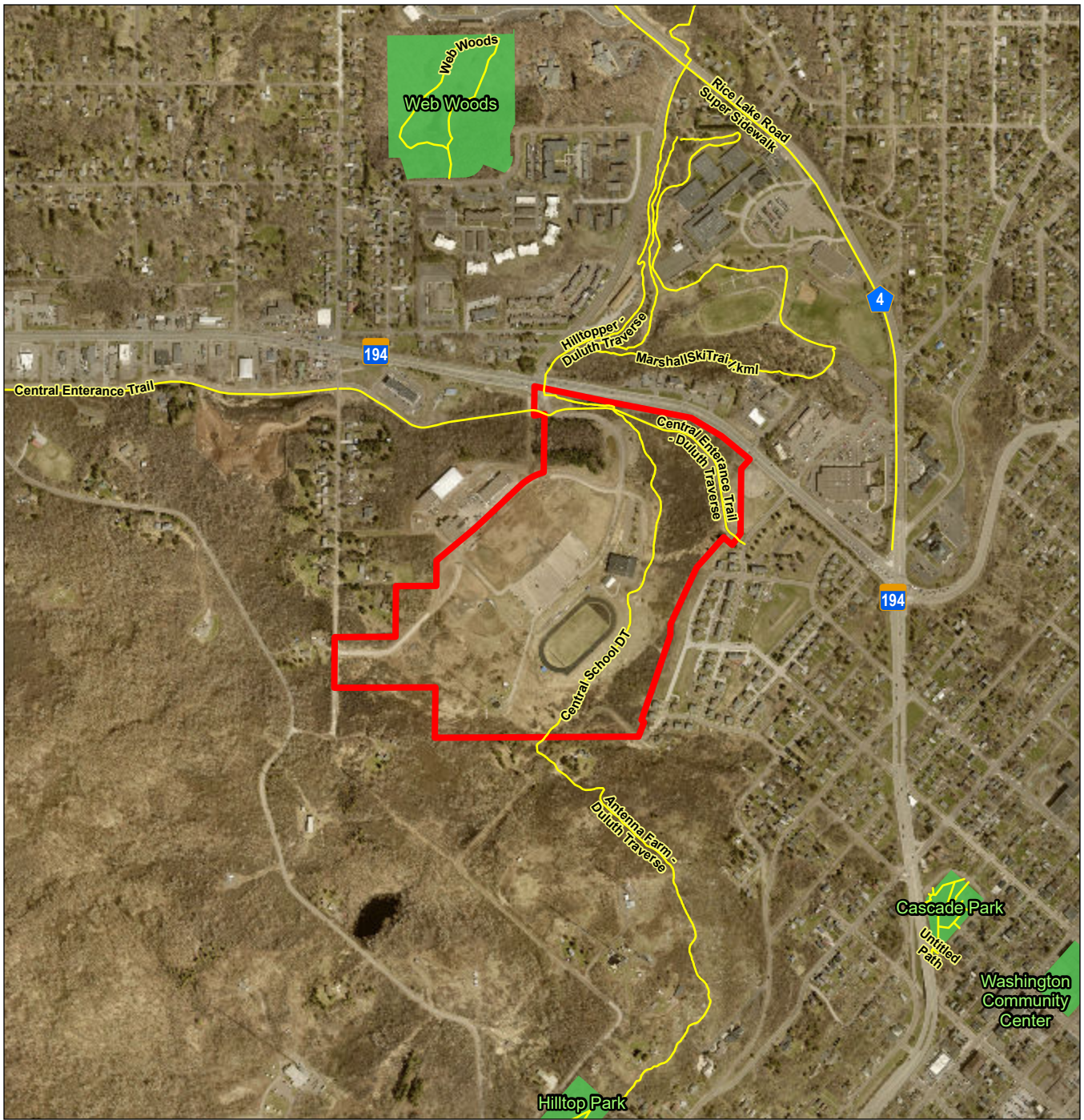
*227706270*

**Notes**

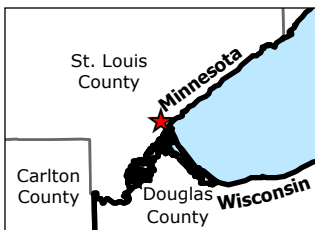
1. Coordinate System: NAD 1983 HARN Adj MN St Louis CS96 Feet
2. Data Sources: Stantec, City of Duluth, St. Louis Co., MnGeo, MnDOT
3. Background: 2023 St. Louis Co.

V:\2277\active\227706270\03\_data\gis\_cad\gis\pro\leaw\leaw.aprx Revised: 2023-11-14 By: kjmueller

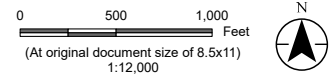




V:\2277\active\227706270\03\_data\gis\_cad\gis\proj\leaw\leaw.aprx Revised: 2023-11-14 By: kjmueller



- Legend**
- Existing Trail
  - AUAR Area
  - Park Boundary



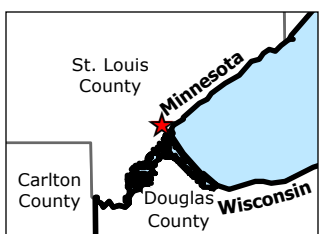
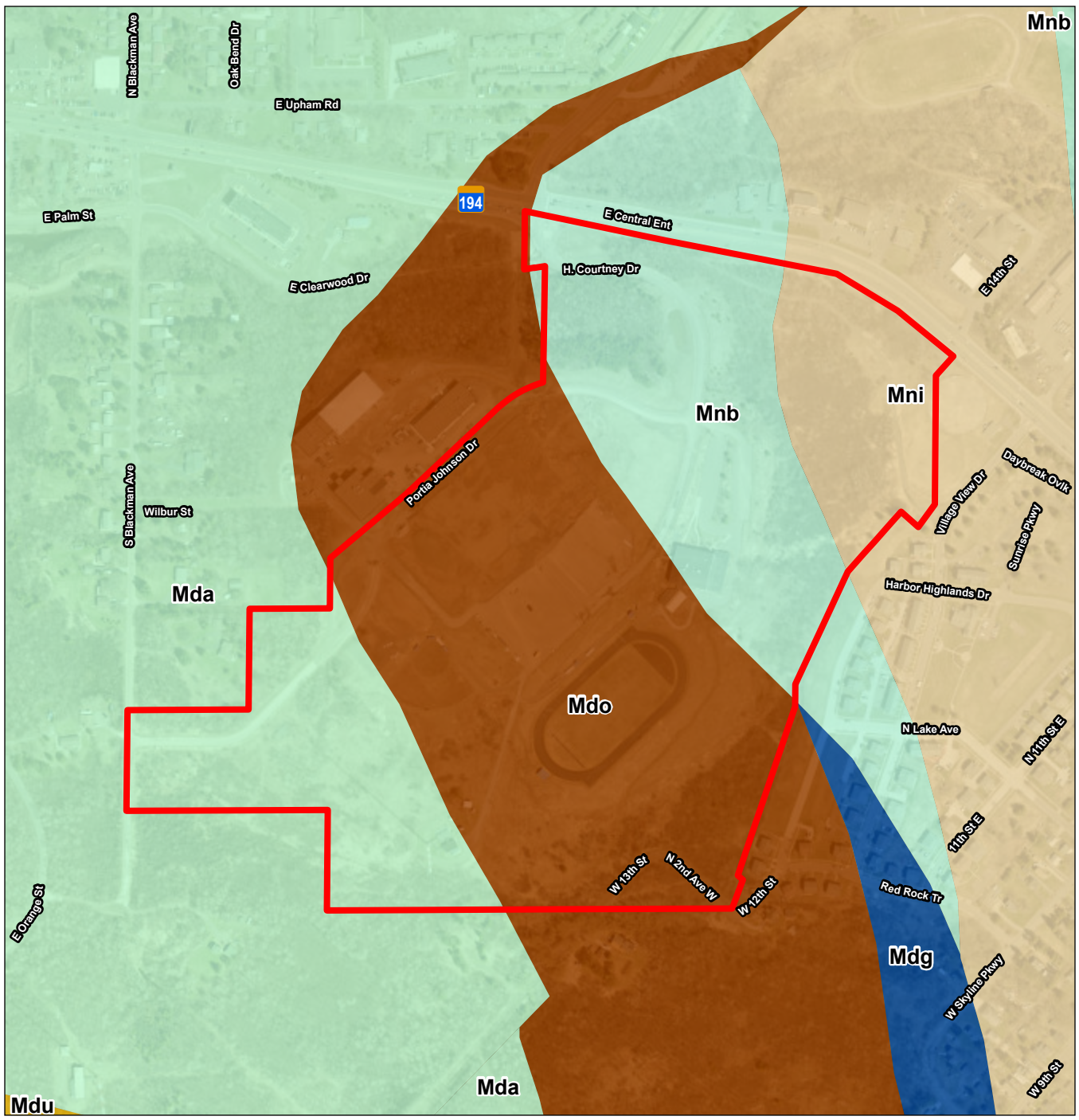
*Project Location* T69N, R50W, S21 Duluth, St. Louis Co., MN  
*Prepared by* KJM on 2023-11-14

*Client/Project* City of Duluth  
 Duluth Central High School Redevelopment Site  
 Scoping EAW  
 Figure No. 227706270  
**5**

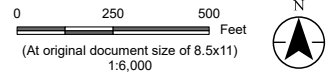
*Title*  
**Parks Trails and Other Recreational Areas**

- Notes**
1. Coordinate System: NAD 1983 HARN Adj MN St Louis CS96 Feet
  2. Data Sources: Stantec, City of Duluth, St. Louis Co., MnDOT
  3. Background: 2023 St. Louis Co.





- Legend**
- ▭ AUAR Area
  - Bedrock Geology**
  - ▭ Mdo, Porphyritic ophitic olivine leucogabbro
  - ▭ Mdu, Upper contact zone - ferrodiorite, ferromonzodiorite, ferrogabbro
  - ▭ Mda, Anorthosite, troctolitic anorthosite, olivine gabbroic anorthosite, anorthositic gabbro
  - ▭ Mdg, Ferromonzodiorite to granophyre
  - ▭ Mnb, Undifferentiated basalt to basaltic andesite flows
  - ▭ Mni, Icelandite



Project Location: T69N, R50W, S21 Duluth, St. Louis Co., MN Prepared by KJM on 2023-11-14

Client/Project: City of Duluth 227706270  
 Duluth Central High School Redevelopment Site  
 Scoping EAW

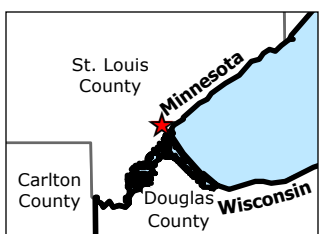
Figure No. 6

**Bedrock Geology Map**

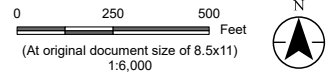
V:\227706270\227706270\_03\_data\gis\proj\leaw\leaw.aprx Revised: 2023-11-14 By: kjmueller

Disclaimer: This document has been prepared based on information provided by others as cited in the Notes section. Stantec has not verified the accuracy and/or completeness of this information and shall not be responsible for any errors or omissions which may be incorporated herein as a result. Stantec assumes no responsibility for data supplied in electronic format, and the recipient accepts full responsibility for verifying the accuracy and completeness of the data.





**Legend**  
■ AUAR Area  
 Soil Map Unit



*Project Location* T69N, R50W, S21 Duluth, St. Louis Co., MN  
*Prepared by* KJM on 2023-11-14

*Client/Project* City of Duluth  
 Duluth Central High School Redevelopment Site  
 Scoping EAW  
 227706270

*Figure No.* 7

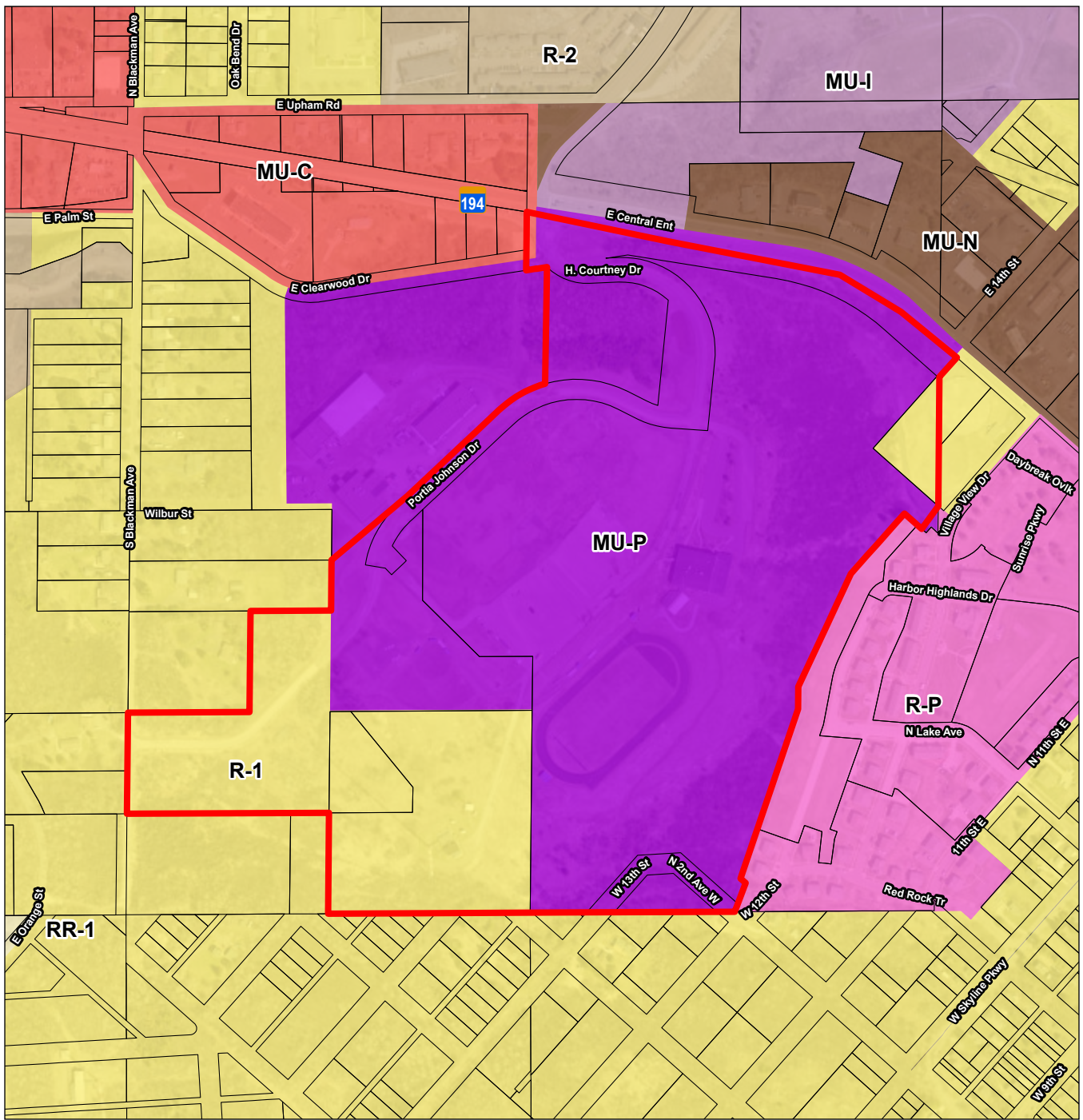
*Title* Soils Classification Map

**Notes**  
 1. Coordinate System: NAD 1983 HARN Adj MN St Louis CS96 Feet  
 2. Data Sources: Stantec, MnGeo, MnDOT, NRCS  
 3. Background: 2023 St. Louis Co.

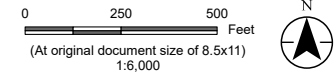
V:\2277\active\227706270\03\_data\gis\_cad\gis\proj\leaw\leaw.aprx Revised: 2023-11-14 By: kjmueller

Disclaimer: This document has been prepared based on information provided by others as cited in the Notes section. Stantec has not verified the accuracy and/or completeness of this information and shall not be responsible for any errors or omissions which may be incorporated herein as a result. Stantec assumes no responsibility for data supplied in electronic format, and the recipient accepts full responsibility for verifying the accuracy and completeness of the data.





- Legend**
- AUAR Area
  - Parcels
- City of Duluth Zoning**
- MU-C (Mixed Use Commercial)
  - MU-I (Mixed Use Institutional)
  - MU-N (Mixed Use Neighborhood)
  - MU-P (Mixed Use Planned)
  - R-1 (Residential Traditional)
  - R-2 (Residential Urban)
  - R-P (Residential Planned)
  - RR-1 (Rural Residential 1)



Project Location: T69N, R50W, S21 Duluth, St. Louis Co., MN Prepared by KJM on 2023-11-14

Client/Project: City of Duluth 227706270  
 Duluth Central High School Redevelopment Site  
 Scoping EAW

Figure No. **8**  
 Title **Zoning**

**Notes**

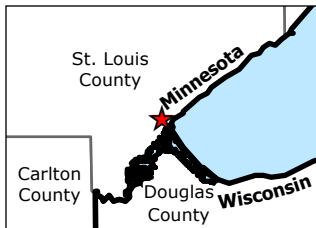
1. Coordinate System: NAD 1983 HARN Adj MN St Louis CS96 Feet
2. Data Sources: Stantec, City of Duluth, St. Louis Co., MnGeo, MnDOT
3. Background: 2023 St. Louis Co.

V:\2277\active\227706270\3\_data\gis\_cad\gis\proj\leaw\leaw.aprx Revised: 2023-11-14 By: kjmueller

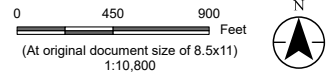




V:\2277\active\227706270\3\_data\gis\_cad\gis\proj\leaw\leaw.aprx Revised: 2023-11-14 By: kjmueller



- Legend**
- ▭ AUAR Area
  - 1/4 Mile Radius
  - Field Verified Wells**
  - Domestic
  - Monitoring Well
  - Environmental Bore Hole



*Project Location* Prepared by KJM on 2023-11-14  
 T69N, R50W, S21  
 Duluth, St. Louis Co., MN

*Client/Project* 227706270  
 City of Duluth  
 Duluth Central High School Redevelopment Site  
 Scoping EAW

*Figure No.*  
**9**

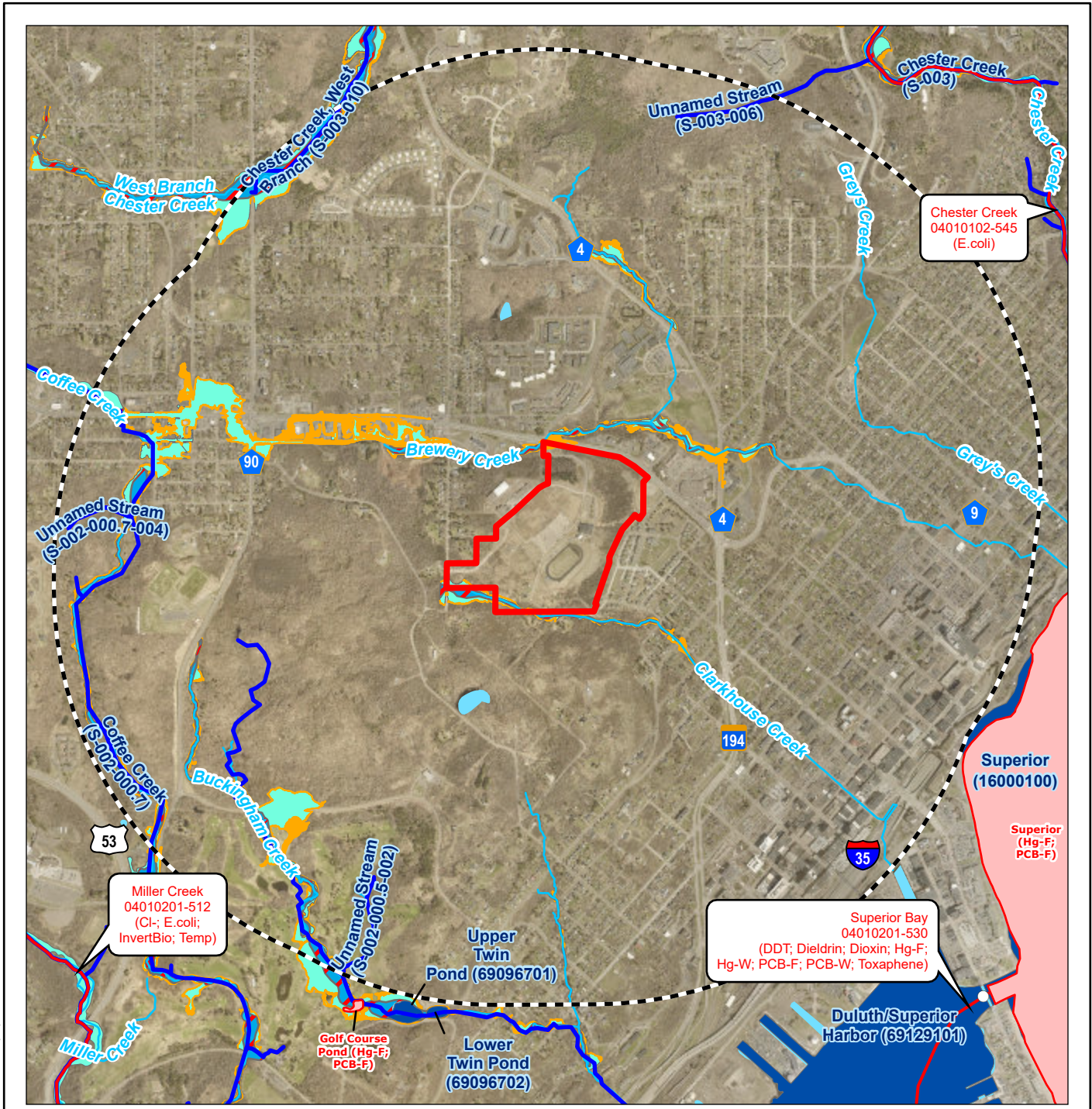
*Title*  
**Minnesota Well Index Map**

**Notes**

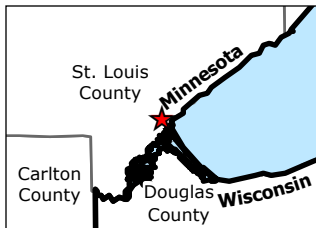
1. Coordinate System: NAD 1983 HARN Adj MN St Louis CS96 Feet
2. Data Sources: Stantec, City of Duluth, MnGeo, MnDOT, MDA, MGS
3. Background: 2023 St. Louis Co.

Disclaimer: This document has been prepared based on information provided by others as cited in the Notes section. Stantec has not verified the accuracy and/or completeness of this information and shall not be responsible for any errors or omissions which may be incorporated herein as a result. Stantec assumes no responsibility for data supplied in electronic format, and the recipient accepts full responsibility for verifying the accuracy and completeness of the data.



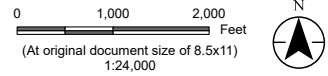


V:\2277\active\22770627003\_data\gis\_cad\gis\proj\leaw\leaw.aprx Revised: 2023-11-14 By: kjmueller



**Notes**  
 1. Coordinate System: NAD 1983 HARN Adj MN St Louis CS96 Feet  
 2. Data Sources: Stantec, City of Duluth, MnDNR, MnDOT, MPCA, USGS, FEMA  
 3. Background: 2023 St. Louis Co.

- Legend**
- AUAR Area
  - 1 Mile Radius
  - ~ 2022 MPCA Impaired Streams (Draft)
  - 2022 MPCA Impaired Lakes (Draft)
  - Minnesota Public Waters Delineations**
  - Public Water Watercourse
  - Public Waters Basins
  - ~ City of Duluth Streams
  - ~ Waterbody
  - FEMA Flood Hazard (Preliminary)**
  - 1% Annual Chance Flood Hazard
  - Floodway
  - 0.2% Annual Chance Flood Hazard



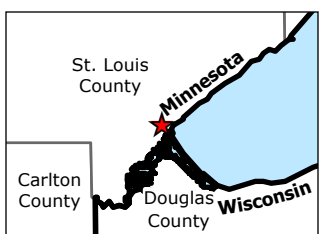
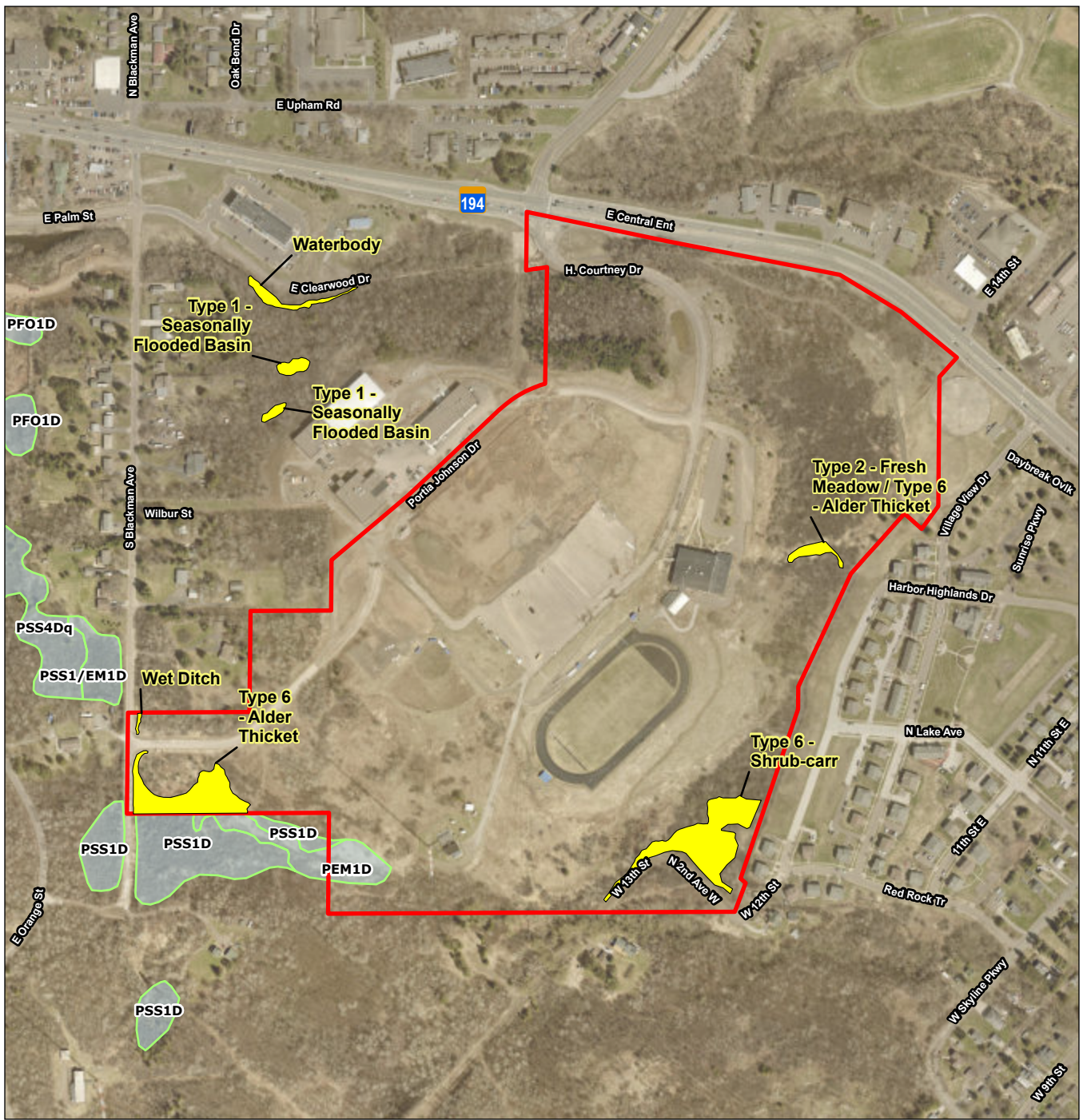
*Project Location* T69N, R50W, S21 Duluth, St. Louis Co., MN  
*Prepared by* KJM on 2023-11-14

*Client/Project* City of Duluth Duluth Central High School Redevelopment Site  
 227706270  
*Figure No.* 10

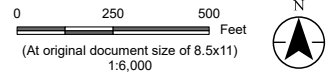
**Water Resources Map**

Disclaimer: This document has been prepared based on information provided by others as cited in the Notes section. Stantec has not verified the accuracy and/or completeness of this information and shall not be responsible for any errors or omissions which may be incorporated herein as a result. Stantec assumes no responsibility for data supplied in electronic format, and the recipient accepts full responsibility for verifying the accuracy and completeness of the data.





- Legend**
- Field Delineated Wetland
  - National Wetlands Inventory Feature
  - AUAR Area



Project Location: T69N, R50W, S21  
 Duluth, St. Louis Co., MN  
 Prepared by KJM on 2023-11-14

Client/Project: City of Duluth  
 Duluth Central High School Redevelopment Site  
 Scoping EAW  
 227706270

Figure No. 11

**Wetlands Map**

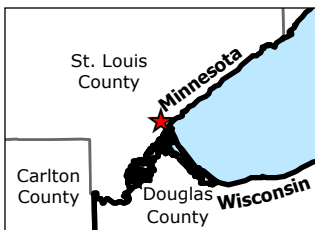
**Notes**  
 1. Coordinate System: NAD 1983 HARN Adj MN St Louis CS96 Feet  
 2. Data Sources: Stantec, City of Duluth, St. Louis Co., MnDOT, MnDNR, WSB  
 3. Background: 2023 St. Louis Co.

V:\2277\active\227706270\03\_data\gis\_cad\gis\proj\leaw\leaw.aprx Revised: 2023-11-14 By: kjmueller

Disclaimer: This document has been prepared based on information provided by others as cited in the Notes section. Stantec has not verified the accuracy and/or completeness of this information and shall not be responsible for any errors or omissions which may be incorporated herein as a result. Stantec assumes no responsibility for data supplied in electronic format, and the recipient accepts full responsibility for verifying the accuracy and completeness of the data.



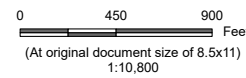
V:\2277\active\227706270\3\_data\gis\_cad\gis\proj\leaw\leaw.aprx Revised: 2023-11-14 By: kjmueller



**Notes**  
 1. Coordinate System: NAD 1983 HARN Adj MN St Louis CS96 Feet  
 2. Data Sources: Stantec, MnGeo, MnDOT, MPCA  
 3. Background: 2023 St. Louis Co.

**Legend**

- ▭ AUAR Area
- 1/4 Mile Radius
- MPCA Sites**
- Program Name**
- Multiple Programs
- Hazardous Waste
- Investigation and Cleanup
- ▲ Tanks

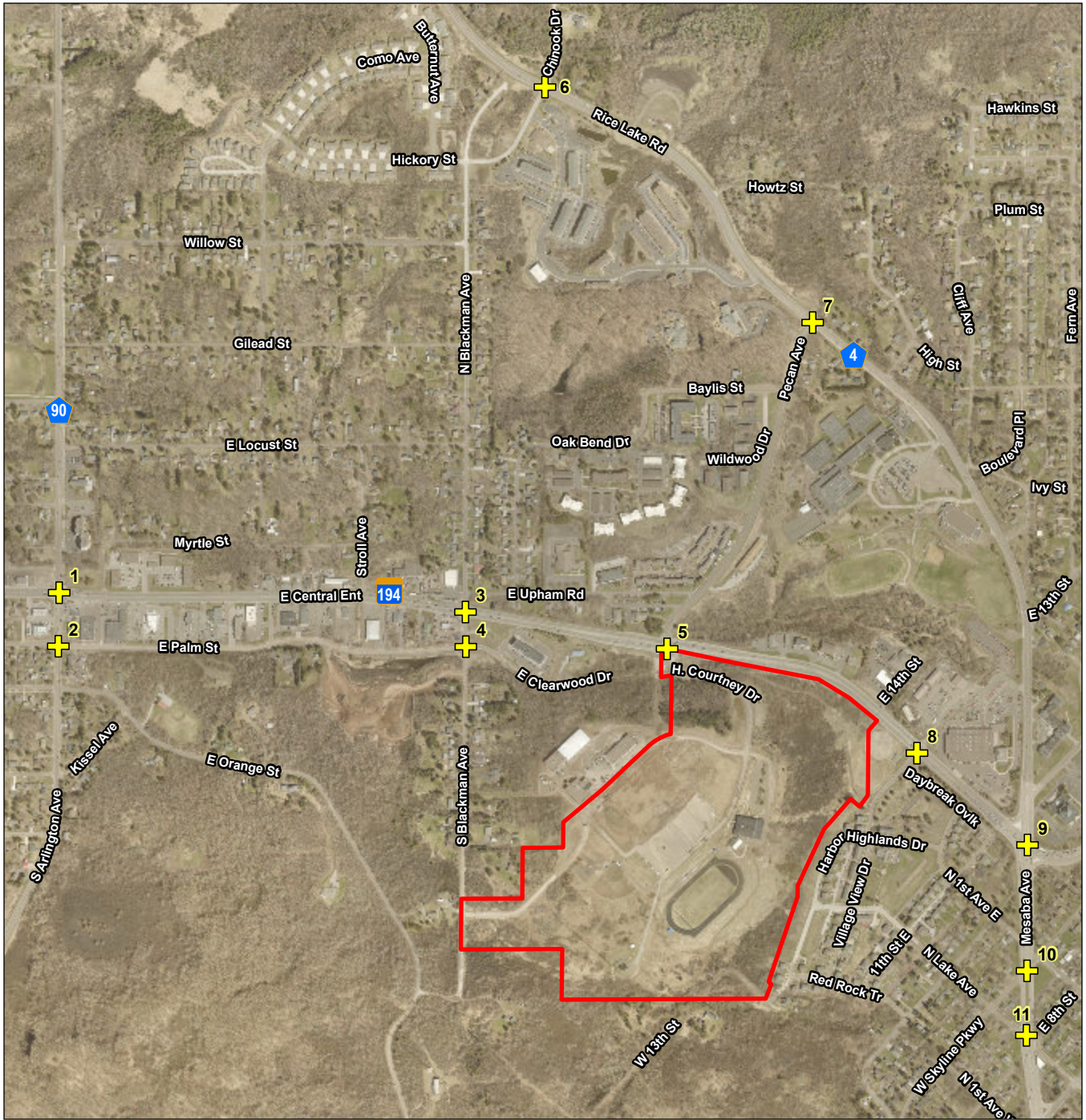


*Project Location* Prepared by KJM on 2023-11-14  
 T69N, R50W, S21  
 Duluth, St. Louis Co., MN

*Client/Project* 227706270  
 City of Duluth  
 Duluth Central High School Redevelopment Site  
 Scoping EAW

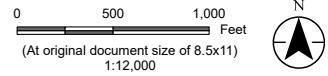
*Figure No.*  
**12**  
*Title*  
**MPCA WIMN Potentially Contaminated Sites**





**Legend**  
 + Transportation Study Intersections  
 [Red Outline] AUAR Area

Map ID	Intersection
01	Central Entrance (TH 194)/Arlington Avenue
02	Arlington Avenue/Palm Street
03	Central Entrance/Blackman Avenue
04	Blackman Avenue/Palm Street/ Clearwood Drive
05	Central Entrance/Courtney Dr
06	Rice Lake Road/Hickory Street/ Chinook Drive
07	Rice Lake Road/Pecan Avenue
08	Central Entrance/13th Street
09	Central Entrance/Rice Lake Road
11	Mesaba Avenue/Skyline Parkway
10	Mesaba Avenue/Lake Avenue



Project Location: T69N, R50W, S21 Duluth, St. Louis Co., MN  
 Prepared by KJM on 2023-11-14

Client/Project: City of Duluth  
 Duluth Central High School Redevelopment Site  
 Scoping EAW  
 227706270

Figure No. 13  
 Title  
**Transportation Study Intersections**

V:\2277\active\227706270\03\_data\gis\_cad\gis\proj\leaw\leaw.aprx Revised: 2023-11-14 By: kjmueller

Disclaimer: This document has been prepared based on information provided by others as cited in the Notes section. Stantec has not verified the accuracy and/or completeness of this information and shall not be responsible for any errors or omissions which may be incorporated herein as a result. Stantec assumes no responsibility for data supplied in electronic format, and the recipient accepts full responsibility for verifying the accuracy and completeness of the data.