

Tree Farm- East Toolhouse

The Tree Farm is located near the northeast boundary of Duluth. There is a large garage space with a single user toilet room and an employee kitchen/break room. The toilet room is currently accessible. The kitchen currently provides no features of accessibility.

Tree Farm- East Toolhouse

Accessibility Review

Location JQP # / Item #	Solution / Comments	Qty	Unit Cost	Total Cost	Priority	Estimated Compl. Date	Person Responsible	Actual Compl. Date	Actual Cost
Patio									
12H 15665	Bevel / replace / reset threshold so there is no abrupt rise greater than 1/2" or slope greater than 1:2. ICC / ANSI 404.2.4 Currently 2" rise.	1	\$200	\$200	3				
Toilet Room									
22B 15661	Install signage with appropriate raised and Braille lettering. MN 1341 1110.2	1	\$40	\$40	3				
22G (MN) 15663	Modify to provide a minimum clearance of 48" in front of the water closet. MN 1341 604.3.1 <i>Remove the wall hung cabinet opposite the toilet. Photo 3.</i>	1	\$1,000	\$1,000	3				
22Q 15662	Insulate or otherwise protect exposed pipes at lavatory. ICC / ANSI 606.6	1	\$50	\$50	3				
22T 15660	Lower the towel dispenser/dryer so the highest operable part is no higher than 48" (44" maximum if located above lavatory or counter). ANSI 308 Currently at 52".	1	\$50	\$50	3				
				<i>Location Subtotal:</i>					\$1,140
									Priority # 3 Total \$1,340

Location JQP # / Item #	Solution / Comments	Qty	Unit Cost	Total Cost	Priority	Estimated Compl. Date	Person Responsible	Actual Compl. Date	Actual Cost
Break Room									
20B3 15666	Relocate object to achieve needed maneuvering clearance on the pull side of the door. ICC / ANSI 404.2.3, Table 404.2.3.1 <i>The range reduces the clearance on the pull side of the door to 13".</i>	1	\$50	\$50	4				
25J9 15664	Create an accessible kitchen, including: roll under work surface, roll under sink, range with front or side controls, and compliant clearances. ANSI 804 <i>The full kitchen currently provides no features of accessibility. Photo 1.</i>	1	\$7,000	\$7,000	4				
				<i>Location Subtotal:</i>					\$7,050
Parking									
05A 15667	Stripe an appropriate number of accessible parking stalls and provide appropriate permanent signage. IBC 1106.1 <i>There are currently no defined/identified parking spaces in the gravel lot/driveway.</i>	1	\$400	\$400	4				
				Priority # 4 Total					\$7,450

Transition Plan - (location/priority)



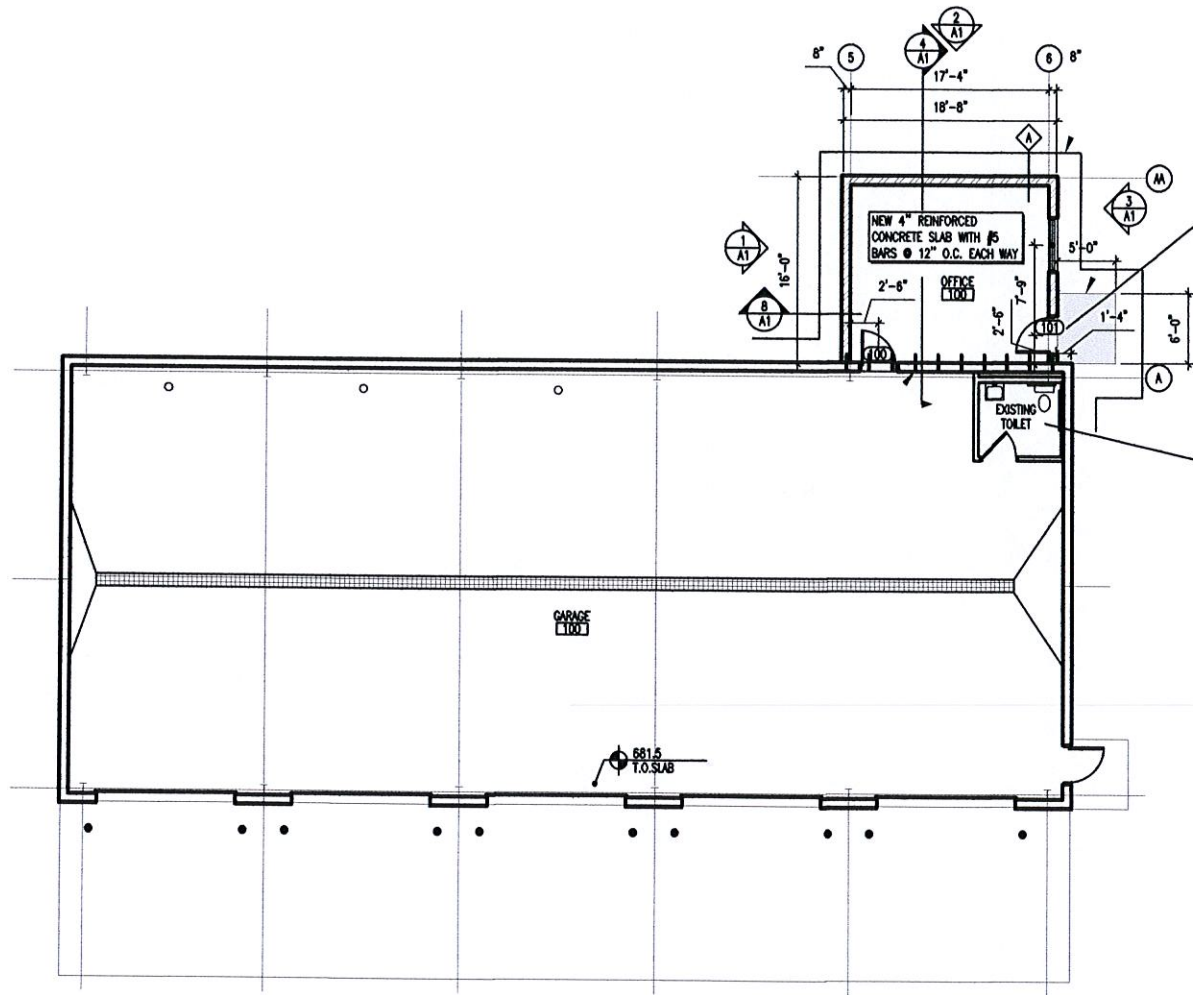
Photo 1: View of break room. The kitchen does not currently provide any features of accessibility.



Photo 2: View of toilet room. Features of accessibility are provided. *This is a good example of accessibility.*



Photo 3: Remove the wall mounted storage cabinet from the toilet room that is currently within the clearance for the toilet.



Key

- Priority 1
- Priority 2
- Priority 3

[L] Install door lever hardware



julee quarve-peterson, inc.
 6345 vincent ave s
 minneapolis, mn 55423
 jqp_inc@yahoo.com

Tree Farm - East Toolhouse

City of Duluth, MN

2013