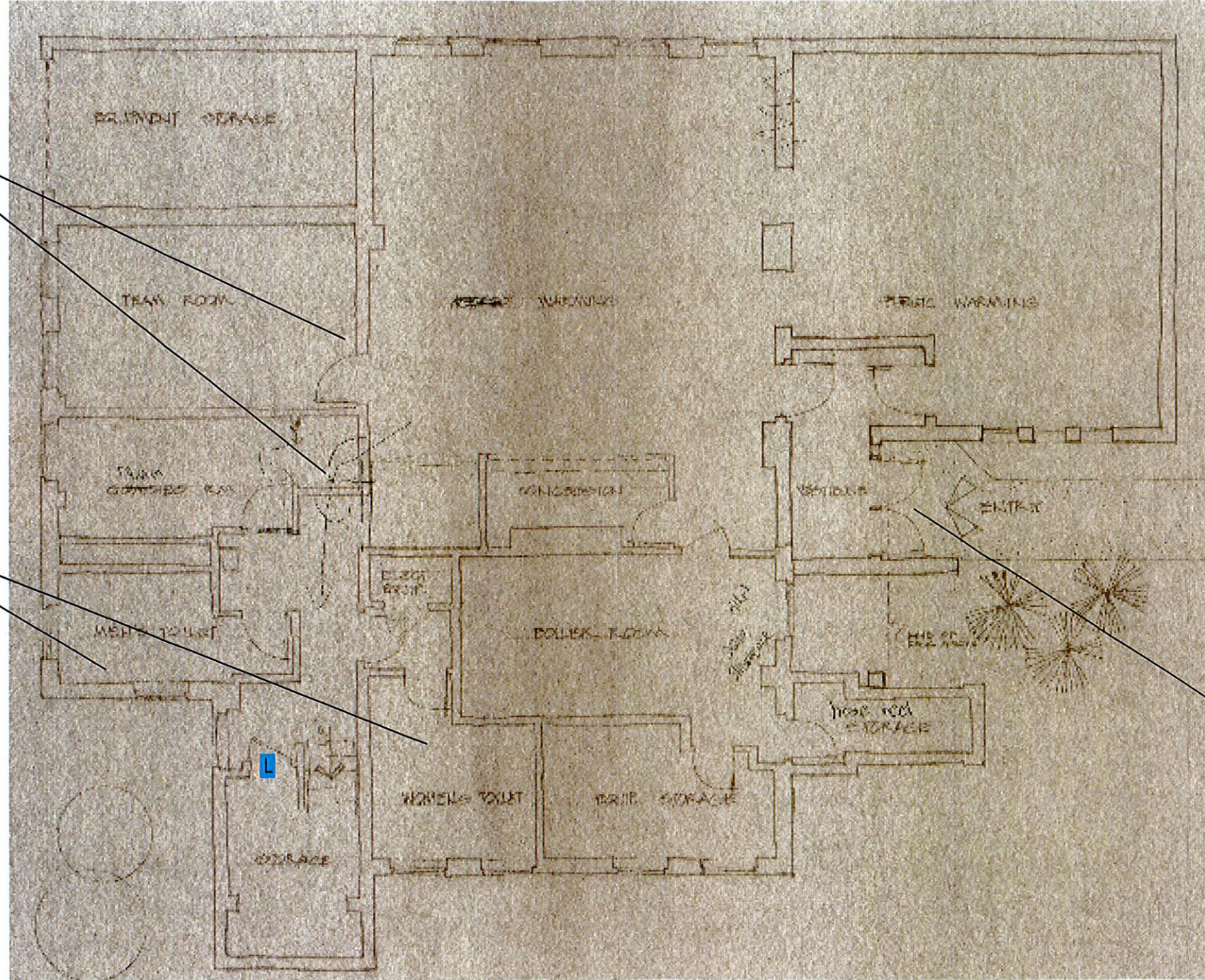


Portman Community Club  
Lower Level  
City of Duluth, MN

julee quarve-peterson, inc.  
6345 vincent ave s  
minneapolis, mn 55423  
jqp\_inc@yahoo.com



Install raised and braille sign

Install raised and braille sign  
Insulate pipes at lavatory  
Replace faucet  
Add full height mirror  
Lower towel dispenser

Bevel threshold at entry

Key

- Priority 1
- Priority 2
- Priority 3

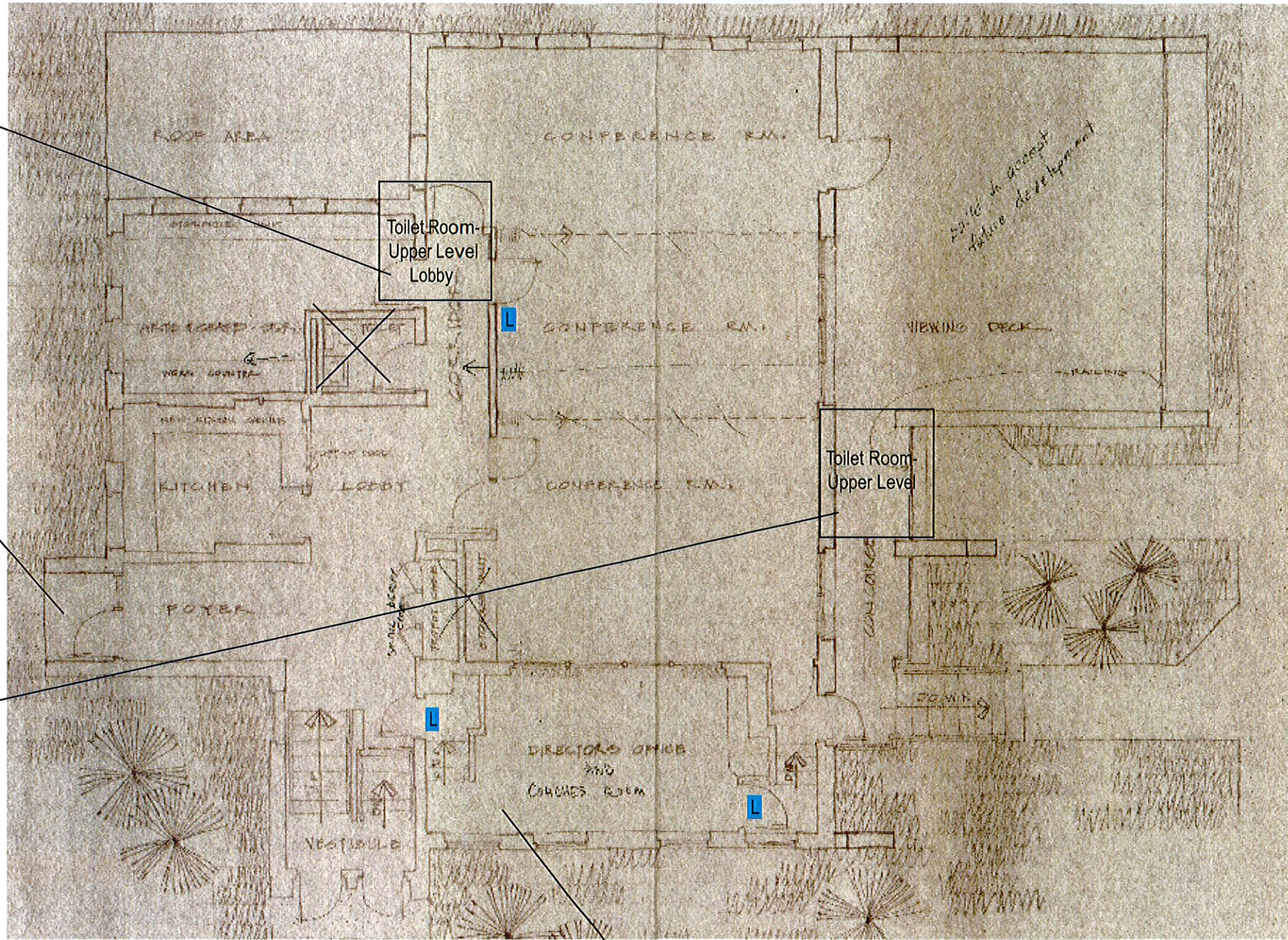
Install door lever hardware



Add raised and braille sign  
 Replace knob style hardware  
 Insulate pipes at lavatory  
 Replace faucet  
 Add full height mirror  
 Replace grab bar  
 Relocate toilet paper dispenser  
 Swing door 'out' of room

Modify wood threshold at entry  
 Modify to provide level  
 maneuvering clearance at entry

Insulate pipes at lavatory  
 Add a full height mirror  
 Remove privacy partition  
 Replace grab bars  
 Replace toilet paper dispenser  
 Add a low coat hook  
 Add raised and braille sign



Relocate programs as necessary (no accessible route to stage/office)  
 Add a raised and braille sign

Key

- Priority 1
- Priority 2
- Priority 3

[L] Install door lever hardware

2013

Portman Community Club  
 Upper Level  
 City of Duluth, MN

julee quarve-peterson, inc.  
 6345 vincent ave s  
 minneapolis, mn 55423  
 jqp\_inc@yahoo.com

