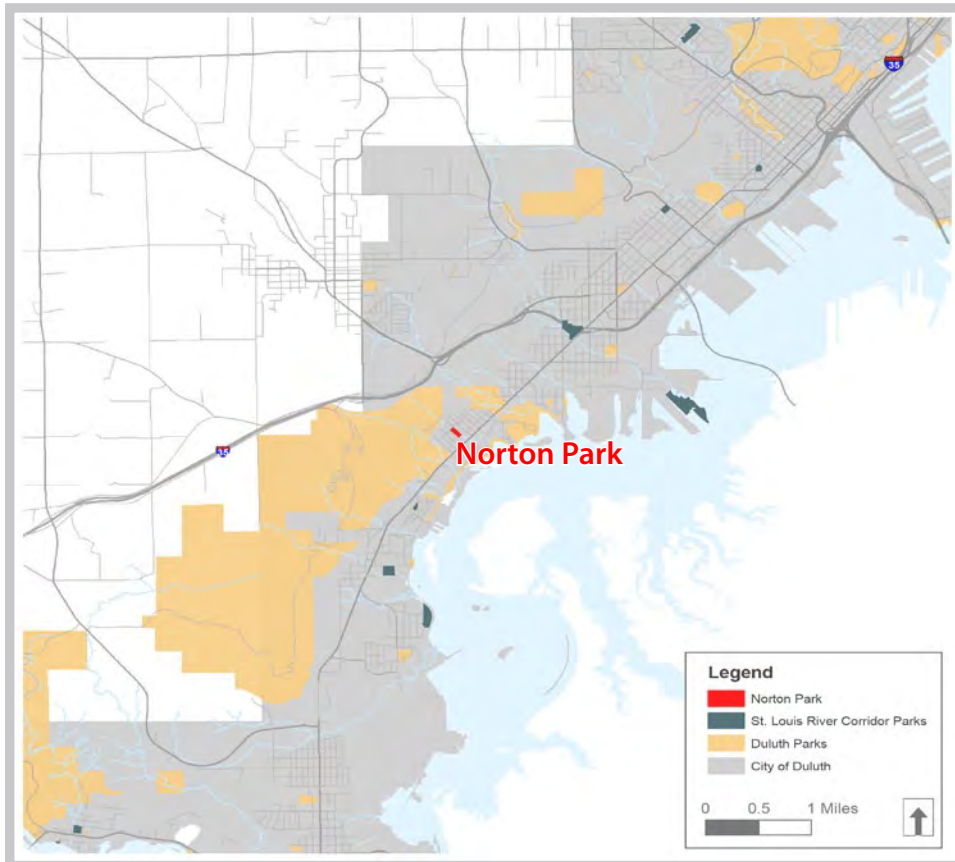




NORTON PARK

Summary and Overview

Norton Park is a three acre neighborhood park in the Norton Park Neighborhood northwest of Grand Avenue. The park is a valuable asset that is centrally located in the generally isolated neighborhood, which is surrounded by Grand Avenue, the Lake Superior Zoo, Spirit Mountain and forested land. The park is characterized by significant topography which forms three separate levels or areas of the park, including a playground, basketball court, park building, softball field, and a wooded creek corridor.



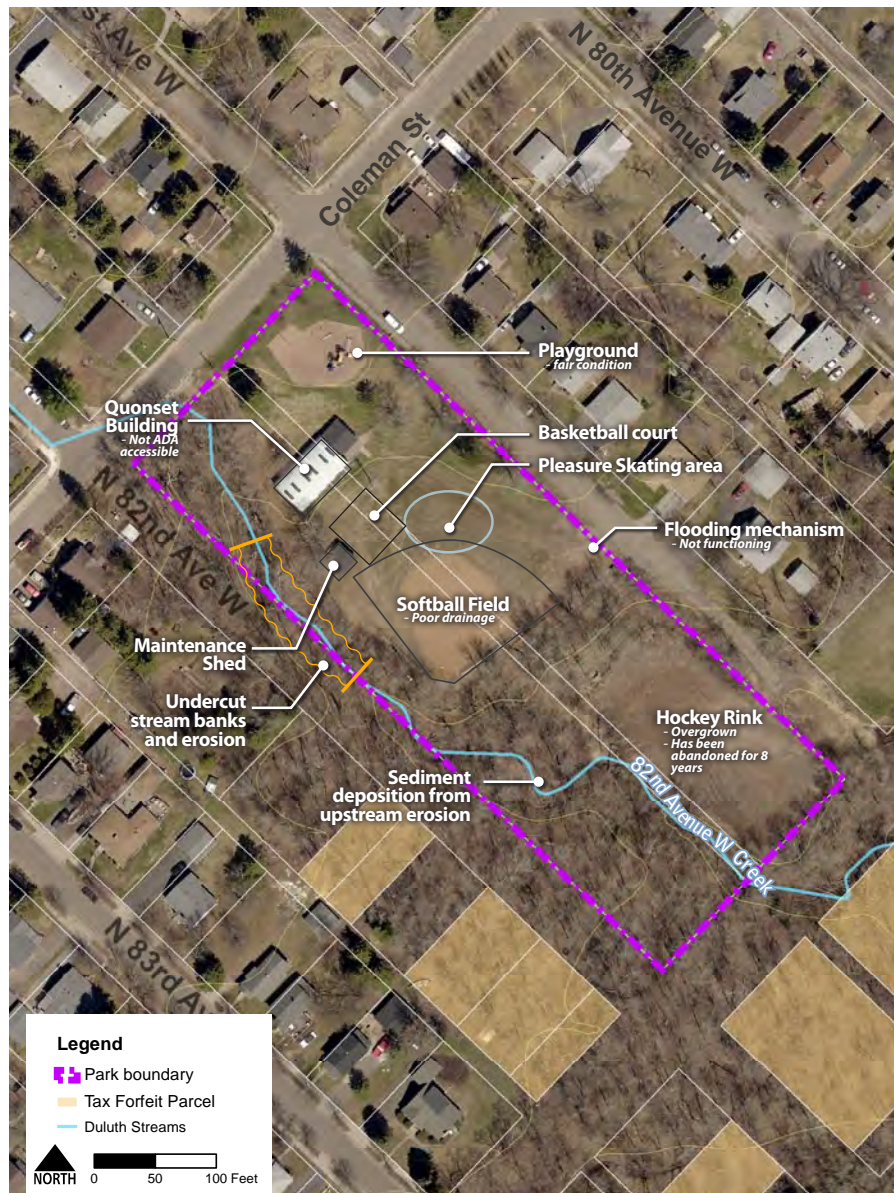
NORTON PARK LOCATION MAP

STRENGTHS/ OPPORTUNITIES:

- » Park is well used and loved by neighborhood residents
- » The 82nd Ave Creek and topography provide the park with a unique, natural setting
- » Park location is ideal for potential trail connections to Munger State Trail, Cross City Trail, and Zoo
- » Potential for new use at abandoned hockey rink site – restored wetland, open space

ISSUES:

- » 82nd Ave Creek has severe erosion and undercutting of stream banks
- » Overgrown hockey rink is unusable space
- » The Quonset Hut is not ADA accessible
- » Flooding mechanism for the pleasure rink on the softball field frequently malfunctions
- » The softball field has poor drainage



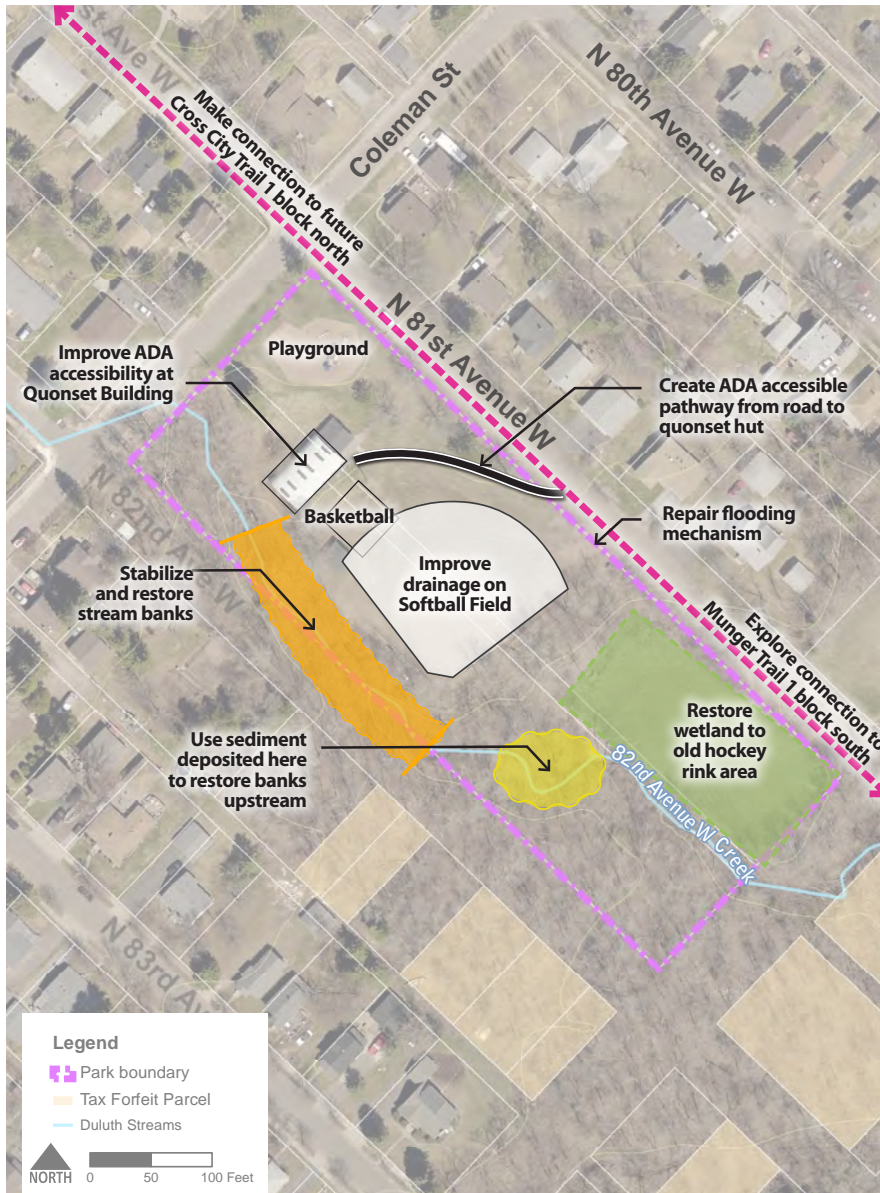
NORTON PARK SITE INVENTORY

Existing Conditions

The edges of Norton Park are Coleman Street, N 181st Ave W, the 82nd Avenue W Creek, and residential back yards. The creek passes through the southwestern and southeastern edges of the park. The three levels of Norton Park form three distinct recreational areas within the park. The upper level is adjacent to Coleman Street and N 181st Ave W and contains a playground and the closest access to neighborhood residents. The middle level contains the Quonset Hut park building, a maintenance shed, a basketball court and a softball field. The softball field backs up to the wooded creek corridor and faces homes across N 181st Ave W. On the lower level of the park, the remnants of an overgrown and abandoned hockey rink exist.

Needs Assessment/Input Summary

At the stakeholder and community meetings, a desire was expressed for every park in the corridor to have basic amenities, including a bench, a picnic table, and



The existing playground is in fair condition



A quonset hut serves as the neighborhood community center



Erosion issues along 82nd Ave W Creek in the park



The existing ballfield has poor drainage

NORTON PARK SITE ANALYSIS

a grill. One or two picnic tables do exist in Norton Park, but upgraded furnishings and a formalized picnic area is desired. Wayfinding and directional signage to each park, within each park, and to nearby trails are also desired as a way to promote the parks. Signage to direct park users to the Munger Trail and the future Cross City Trail is desired.

The Norton Park Community Club is currently active in the park by providing programming and access to the building. Updated playground equipment is desired as well as better picnic tables and benches near the playground. There is a strong desire to update the building with an ADA accessible trail from 181st Ave W. The sidewalk along 181st Ave W is also in need of repair and extension for proper ADA access to and in the park. Overall upkeep and maintenance is desired throughout the park.

Natural resources improvements that are needed include stream bank restoration to repair erosion and undercutting along the creek; steep slope and drainage swale vegetation on the north side of the park; tree thinning on the



FIGURE 2.16 NORTON PARK MINI-MASTER PLAN CONCEPT

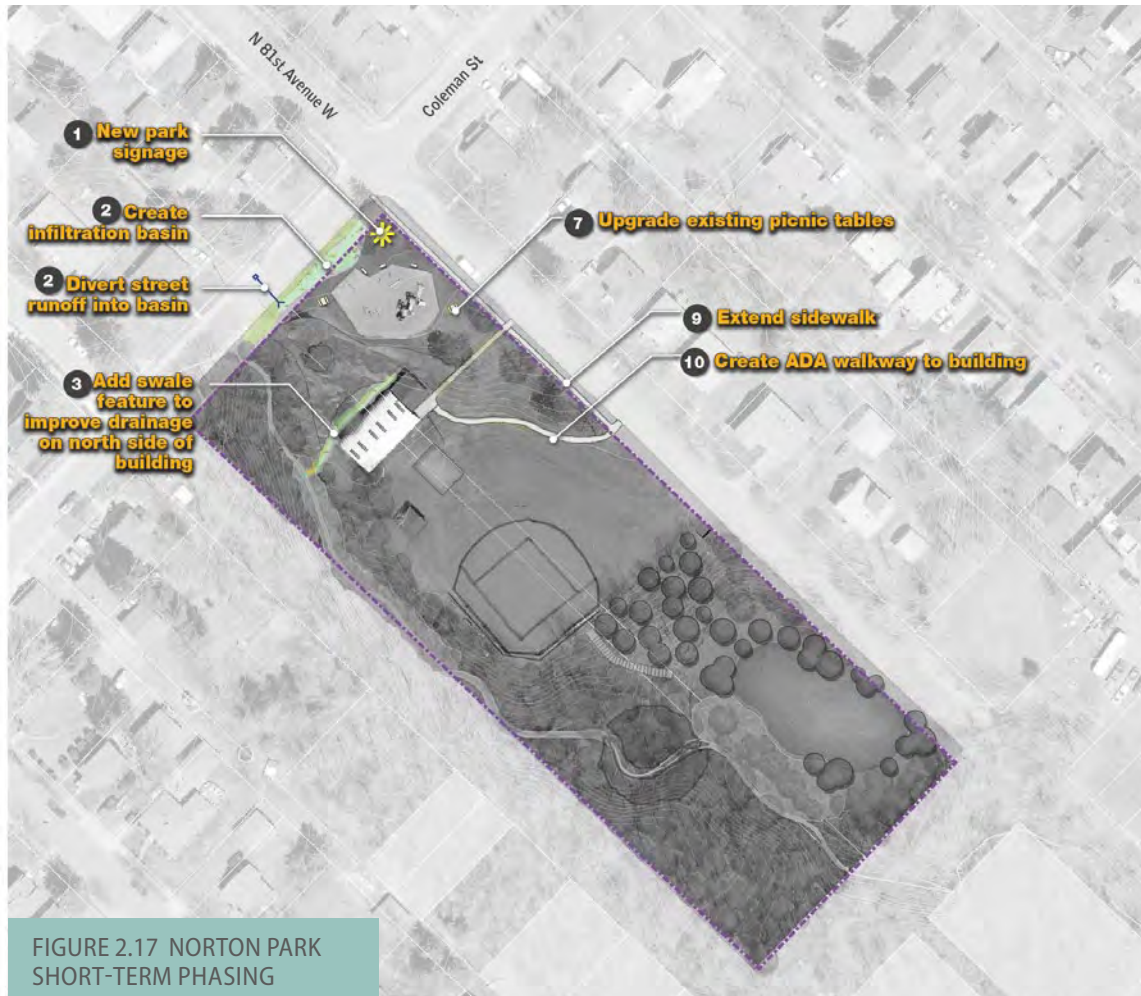
lower slope to improve views in the park and remove invasive species; and improving the abandoned hockey rink surface by removing the remaining bituminous material and invasive herbaceous species.

Concept Plan & Recommendations

The concept plan for Norton Park prioritizes accessibility issues to the building, general maintenance and upgrades, and natural resources improvements to the creek, steep slopes, and lower area of the park.

Phasing & Cost Estimates

PHASE 1: SHORT-TERM



ACTION			COST
#	CATEGORY	DESCRIPTION	
1	Circulation	New Park Signage	\$5,000
2	Stormwater	Create infiltration Basin, and Divert Street Runoff into Basin	\$18,000
3	Stormwater	Add Swale Feature to Improve Drainage	\$5,250
7	Furnishings	Upgrade Picnic Tables (2)	\$4,000
9	Circulation	Extend Sidewalk	\$8,400
10	Circulation	Create ADA Walkway to Building	\$9,600
Total Short-Term Improvement Costs			\$50,250

PHASE 2: LONG-TERM



FIGURE 2.18 NORTON PARK LONG-TERM PHASING

ACTION			COST
#	CATEGORY	DESCRIPTION	
4	Natural Resources	Stream Restoration Work at Norton	\$55,000
5	Circulation	Repair Existing Steps	\$10,000
6	Circulation	Replace and Extend Existing Sidewalk - 6' concrete trail	\$12,450
8	Vegetation	Convert Turf on Steep Slope to Native Plantings	\$50,400
11	Recreation	Improve Drainage	\$50,000
12	Vegetation	Remove Invasive Species and Thin Woodland	\$800
13	Vegetation	Create Informal Lawn Area	\$22,000
14	Circulation	New Park Signage	\$1,000
14	Lighting	New Street Lighting	\$6,000
15	Recreation	Upgrade play equipment	\$75,000
Total Long-Term Improvement Costs			\$282,650
Total Short-Term Improvement Costs			\$ 50,250
Total Improvement Costs			\$332,900