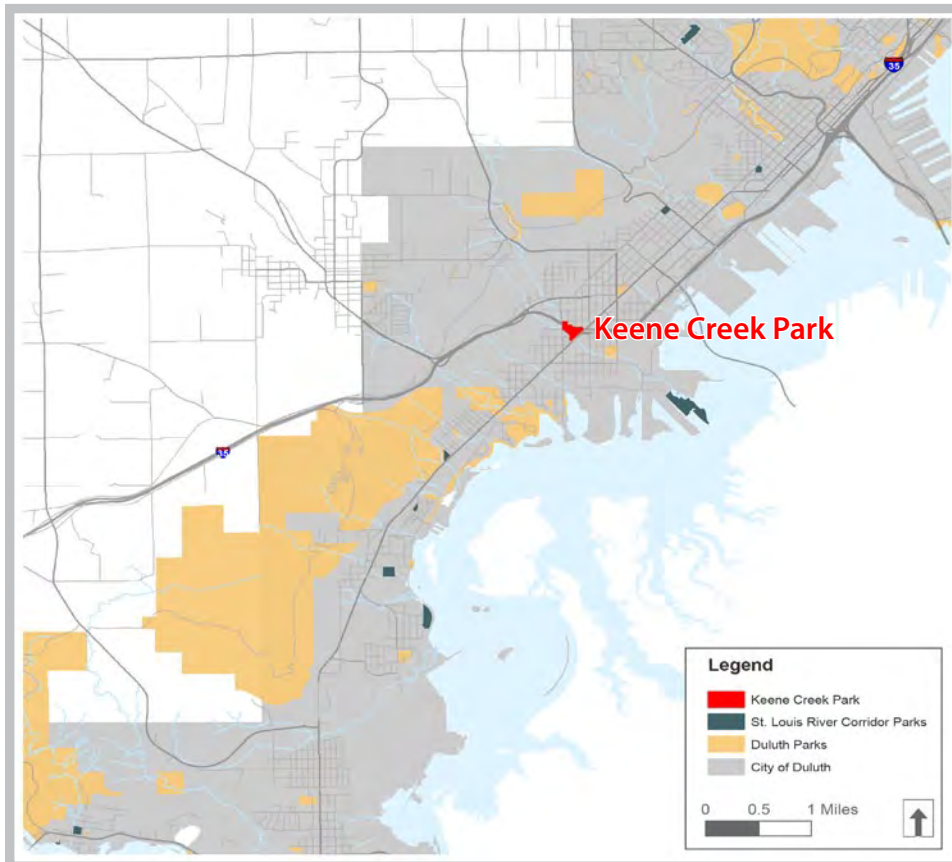




KEENE CREEK PARK

Summary and Overview

Keene Creek Park is a 13 acre urban park in the Fairmount Neighborhood. It is in a unique location under Interstate 35 bridge decks and adjacent to Grand Avenue, surrounded on all other sides by local streets and single-family homes. Two branches of Keene Creek run through the park and join together at the southeastern edge of the park to travel through a culvert under Grand Avenue. Keene Creek Park contains many recreational features, including a dog park, basketball court, tennis courts, playground, skate park, and several paved trails.



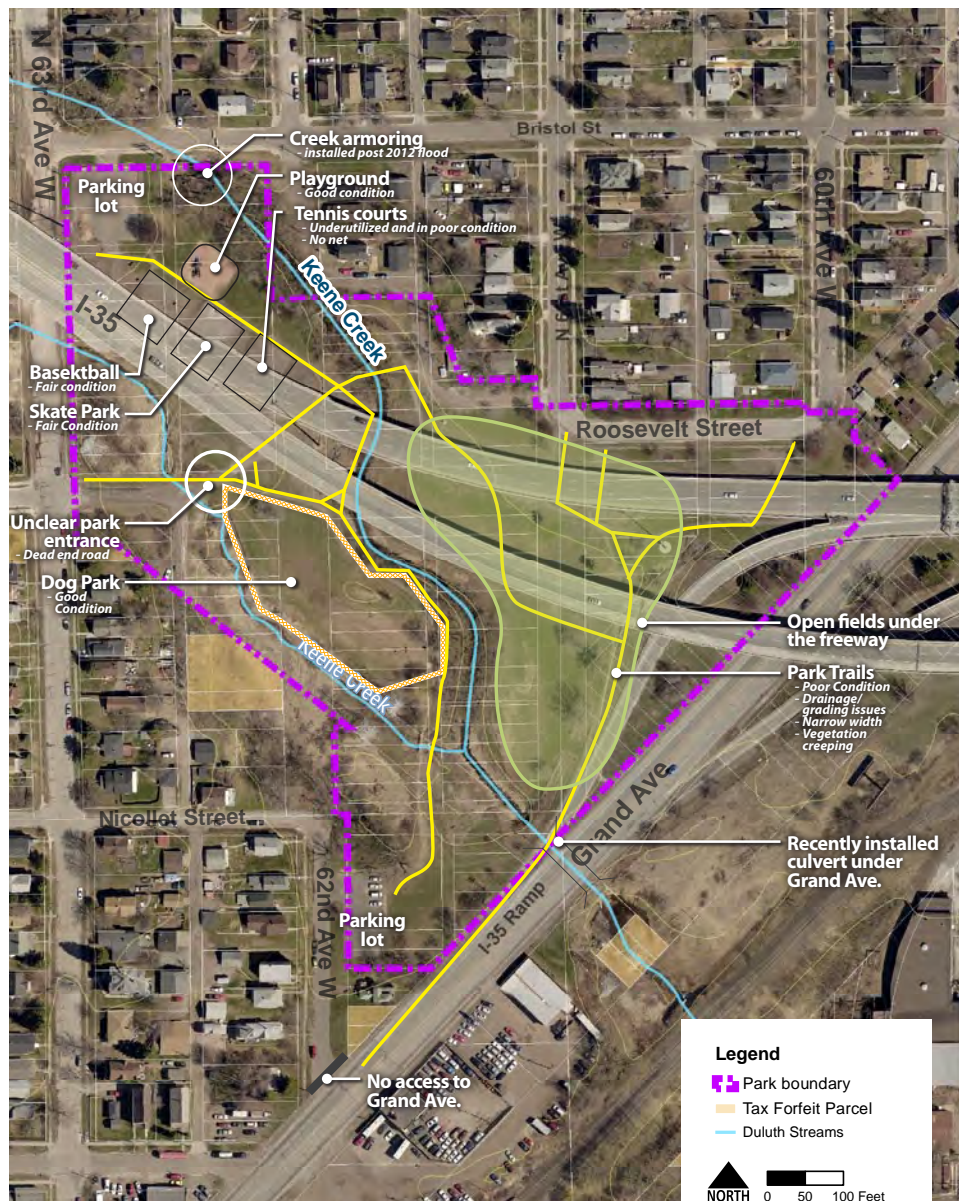
KEENE CREEK PARK LOCATION MAP

STRENGTHS/OPPORTUNITIES:

- » Popular dog park could benefit from minor improvements and possible expansion
- » Skate park is popular, and could be expanded
- » Playground is popular and edging was recently updated, equipment could be expanded
- » The Cross City Trail may pass through the park, providing opportunity for a trailhead at the northwestern parking lot
- » The I-35 bridge provides a unique environment and opportunity for art interpretation
- » Keene Creek is a nice natural feature in the park, there is the opportunity to improve vegetation by removing invasives along the streambanks

ISSUES:

- » Basketball court surface is uneven
- » Tennis courts are underutilized and in disrepair
- » Paved trails are in poor condition, sagging and eroding from stormwater issues
- » Lack of access from Grand Avenue
- » Lack of drinking water and restrooms
- » 2012 flood damage is still visible in the park – more cleanup is needed
- » Lack of shelter/pavilion for picnic tables and gathering
- » Lack of lighting for night time safety
- » Lack of ADA accessibility throughout the park
- » Garbage and park furnishings are sometimes found in the creek
- » Weedy/unkempt areas of the park are unsightly



KEENE CREEK SITE INVENTORY

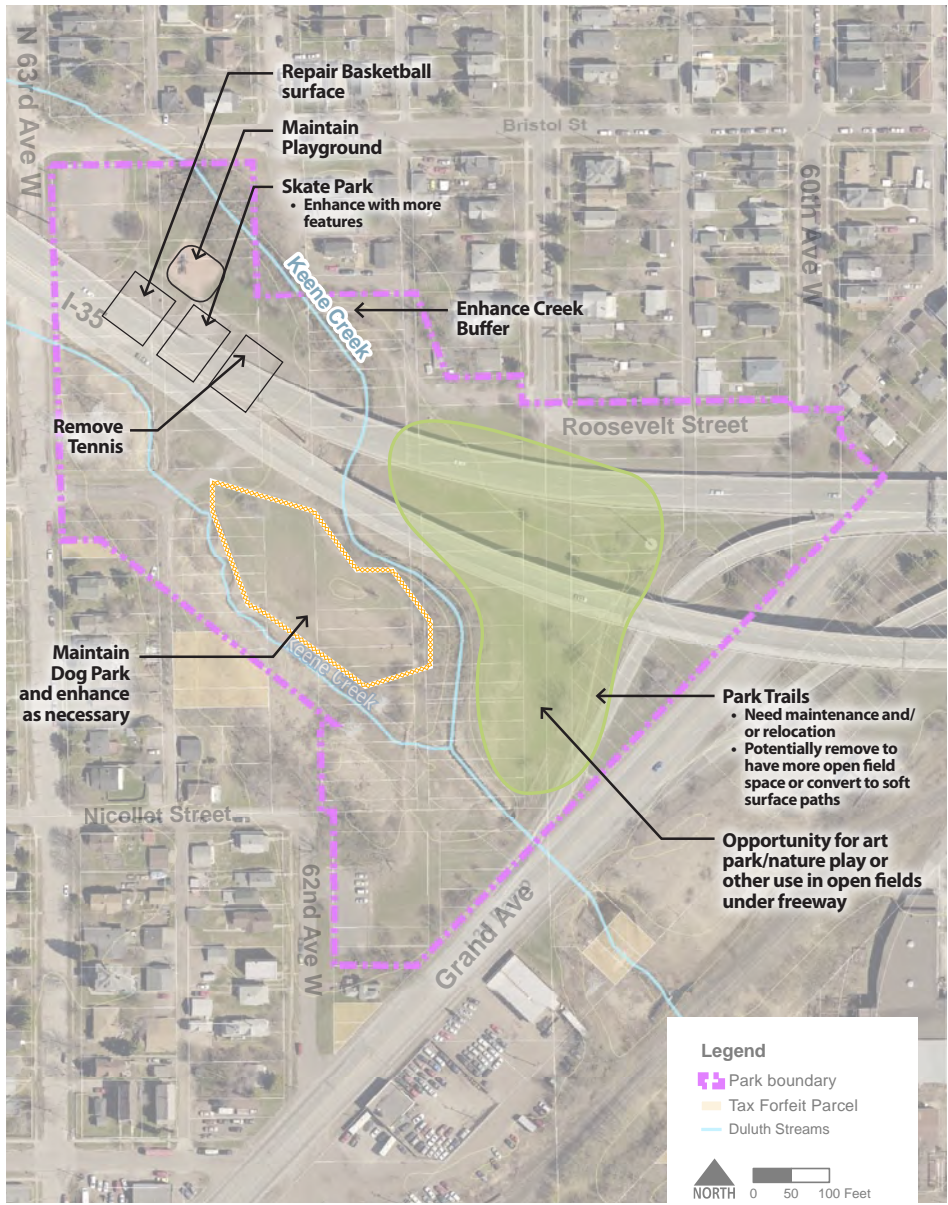
Existing Conditions

Keene Creek Park is a popular, multi-use park. Several recreational features are located in the northwestern corner of the park, which include an updated playground popular with neighborhood residents, a well-used basketball court, two tennis courts in poor condition, and a skate park.

Keene Creek is a designated trout stream and its wooded banks line the northern edge and run through the center of the park.

I-35 bridge decks and pillars run through the center of the park from west to east, which provide shade, but also make portions of the park feel dark and cold at times.

Parking lots exist in the northwestern and southern corners of the park. Vehicle access to the park is not provided from Grand Ave., but from local streets in the neighborhood.



KEENE CREEK PARK SITE ANALYSIS

Needs Assessment/Input Summary

Keene Creek Park contains basic amenities, including benches, picnic tables, and grills, but a desire for a picnic shelter or pavilion was expressed. Wayfinding and directional signage to each park, within each park, and to nearby trails are also desired as a way to promote the parks. Keene Creek has many trails that could benefit from wayfinding signage. With the potential addition of the Cross City Trail, a kiosk sign and directional signage to area businesses and community locations should be added in the park.

An overall interest in basic upkeep, flood cleanup, and the addition of basic park amenities, such as drinking water and restrooms, was expressed at stakeholder and community meetings. There is a desire for improved maintenance of the grassy areas—weed removal, increased mowing, and better stormwater management to reduce standing water in the park and on the trails. The deteriorating bituminous trails are in need of repaving, grading, and potential realignment in order to avoid further degradation from stormwater drainage issues. There is a need throughout the park for improved safety features—lighting, sight lines, and better circulation.

Dog park improvements are desired, including new drinking water for dogs, lighting, a rear entrance, and better parking/wayfinding signage to the entrance of the dog park.



The existing surface of the basketball court is in poor condition



Recent improvements to the Keene Creek Dog Park include signage and a bag dispenser



Many existing trail surfaces are in poor condition



Keene Creek is a major feature of the park

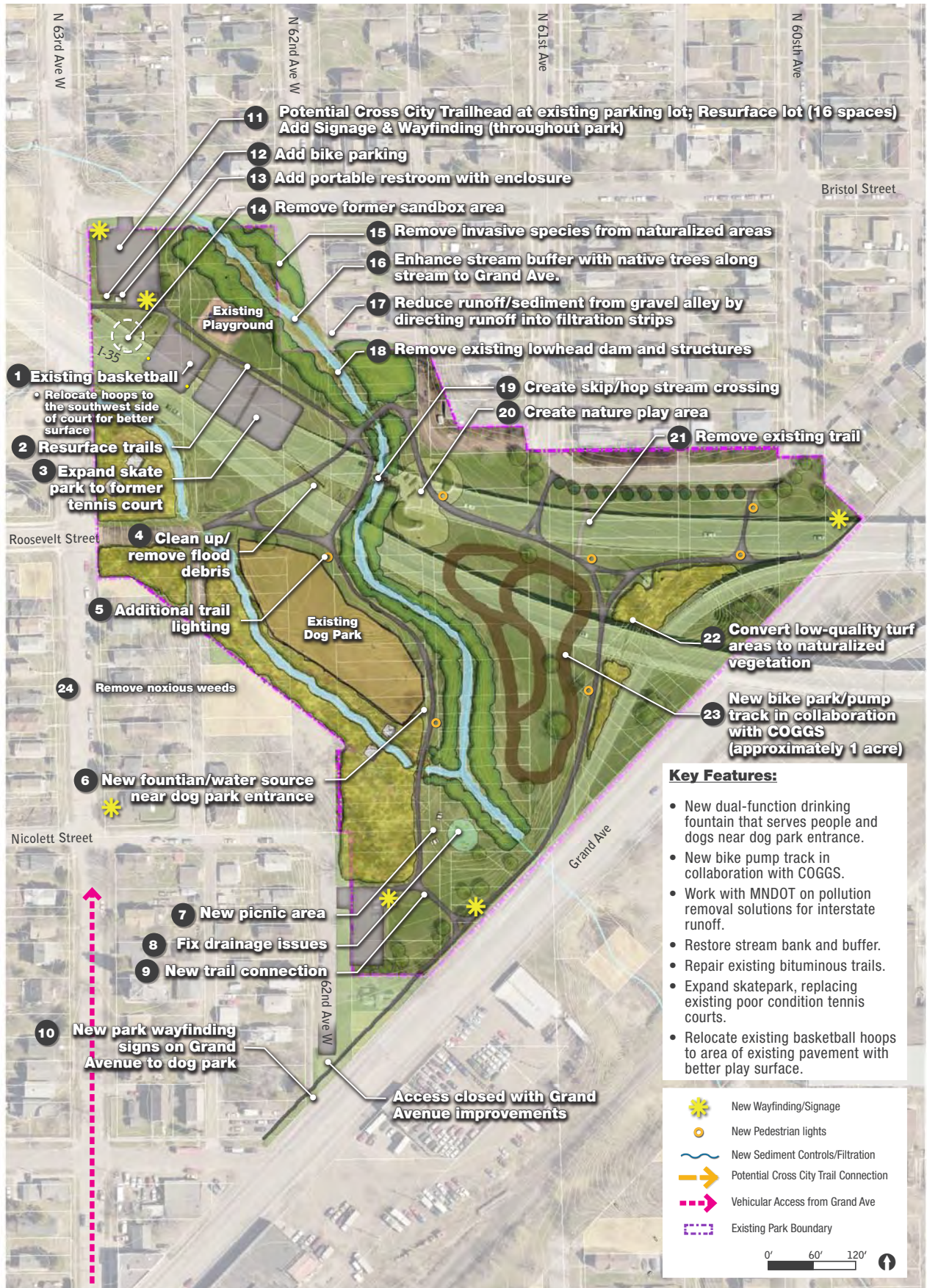


FIGURE 2.22 KEENE CREEK PARK MINI-MASTER PLAN CONCEPT

Concept Plan & Recommendations

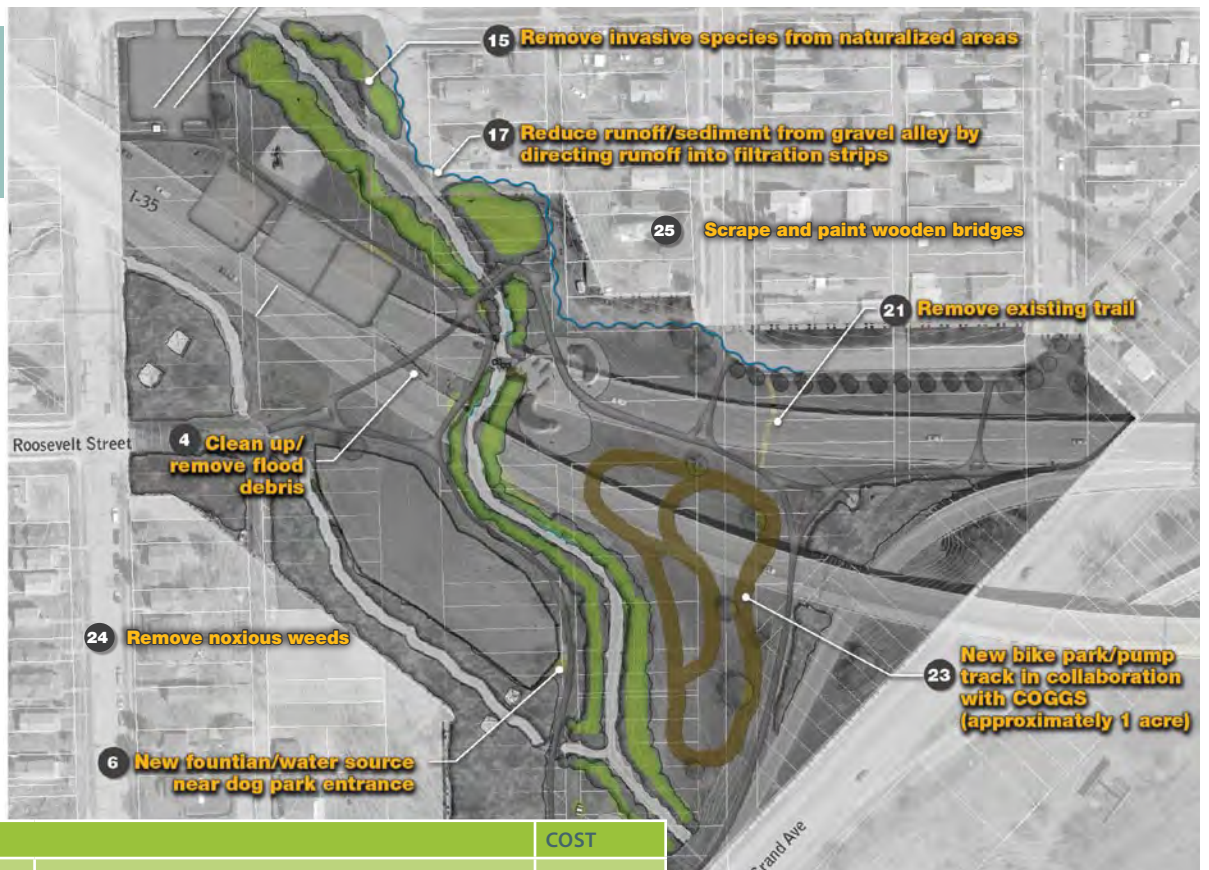
The concept plan for Keene Creek Park identifies several deferred maintenance items that need to be completed to make the park function better: improved stormwater management and drainage, creek vegetation management and cleanup, trail grading and repaving, and signage and circulation improvements. Priorities include the addition of restrooms, drinking water, basic park furnishings and amenities (trash cans, lighting, and shade), and an enhanced picnic area.

Coordination and partnership with the DNR to make natural resource improvements along Keene Creek will be important to the future functionality of Keene Creek and the surrounding vegetation. Items 15-19 are key partnership improvements:

- » Increase streamside shading just above the Highway 23 culvert. This is a very open area which is likely increasing water temperatures. Adding trees to the stream riparian corridor would be very desirable for trout survival in this area as well as downstream.
- » The full tree canopy should be left over the creek to keep stream temperatures cool enough for trout. Despite the fact that there is not a lot of undergrowth at this site, there is also no evidence of any significant erosion, as the tree root densities seem to be very high through this reach, and are doing a good job of protecting the banks.
- » Remove the existing lowhead dam and structures. This project would require some significant design and channel work downstream and should be coordinated closely with the DNR. The skip-hop stream crossing might be achievable within the dam removal design.

Phasing & Estimates PHASE 1: SHORT-TERM

FIGURE 2.23 KEENE CREEK PARK SHORT-TERM PHASING



ACTION			COST
#	CATEGORY	DESCRIPTION	
4	Demolition	Clean Up/Remove Flood Debris	\$1,500
6	Furnishings	New Fountain Near Dog Park Entrance	\$6,000
6	Infrastructure	New Water Line for Source Near Dog Park	\$40,000
15+24	Vegetation	Remove invasive species & noxious weeds	\$7,000
17	Stormwater	Reduce Runoff/Sediment From Alley	TBD
21	Demolition	Remove Existing 6' Bituminous Trail	\$900
25	Furnishings	Scrape and paint wooden bridges	\$ 2,500
Total Costs of Short-Term Improvements			\$57,900

PHASE 2: LONG-TERM

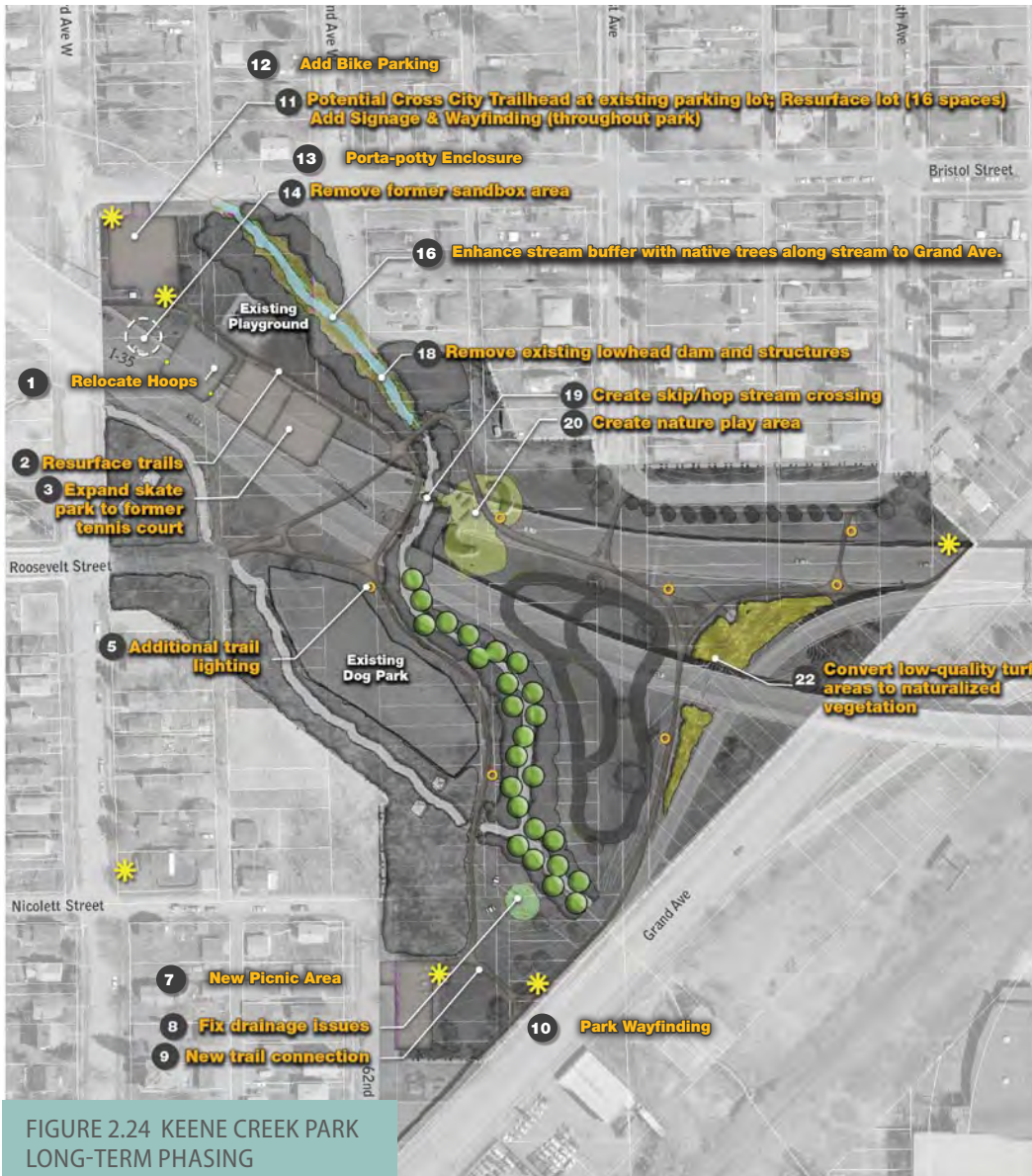


FIGURE 2.24 KEENE CREEK PARK LONG-TERM PHASING

ACTION			COST
#	CATEGORY	DESCRIPTION	
1	Recreation	Relocate Hoops	\$5,000
2	Circulation	Resurface Existing 6' Bituminous Trail	\$85,000
3	Recreation	Expand Skate Park	\$45,000
5	Lighting	Additional Trail Lighting	\$28,000
7	Furnishings	New Picnic Area - Picnic Tables (2)	\$4,000
7	Furnishings	New Picnic Area - Grill	\$1,000
8	Stormwater	Fix Drainage Issues - New Raingarden	\$30,000
9	Circulation	New Trail Connection - 6' Bituminous Trail	\$4,400
10	Circulation	Install New Park Wayfinding Sign	\$2,000
11	Circulation	Install New Park Sign & Kiosk at Trailhead	\$12,500
11	Circulation	Resurface Existing Parking Lot	\$24,000
12	Furnishings	Add Bike Parking	\$3,000

ACTION			COST
#	CATEGORY	DESCRIPTION	
13	Buildings	Build New Port-a-Potty Enclosure	\$2,000
14	Demolition	Remove Former Sandbox Area	\$5,000
16	Vegetation	Enhance Stream Buffer	\$15,000
18	Natural Resources	Remove Existing Lowhead Dam	TBD
19	Circulation	Create Skip Hop Stream Crossing	\$1,500
20	Recreation	Create Natural Play Area	\$50,000
22	Vegetation	Convert Low-Quality Turf Areas to Naturalized Vegetation	\$2,750
Total Costs of Long-Term			\$320,150
Total Costs of Short-Term			\$57,900
Total Costs of All Improvements			\$378,050