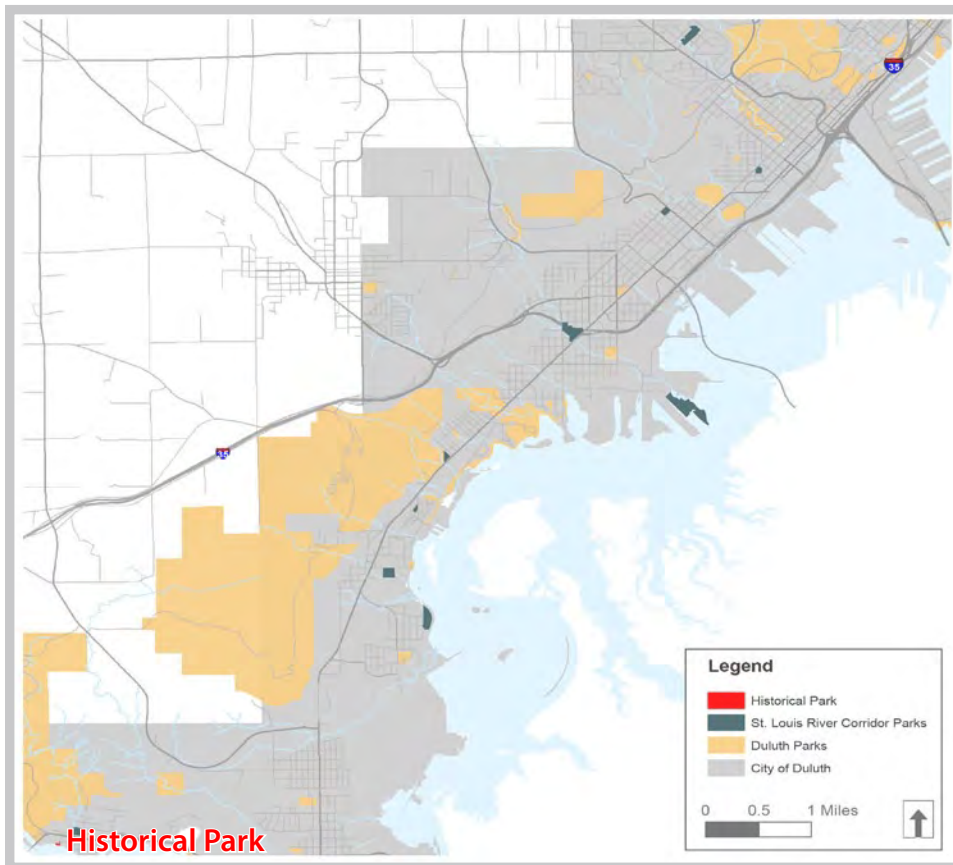


# 02. PARK MINI-MASTER PLANS

## HISTORICAL PARK

### Summary and Overview

Historical Park is a relatively unknown park in the Fond du Lac neighborhood of west Duluth. It is a half-acre park, surrounded by a residential neighborhood, on the banks of the St. Louis River. It is located south of Hwy 23, less than ¼ mile from Fond du Lac Park. The park was formerly called Jacob Astor Park, and it was gifted to the City of Duluth from the Daughters of the American Revolution.



HISTORICAL PARK LOCATION MAP

Historical Park is a site that represents a larger surrounding area of cultural and historical significance. The following historical sites and features are located within or near the park:

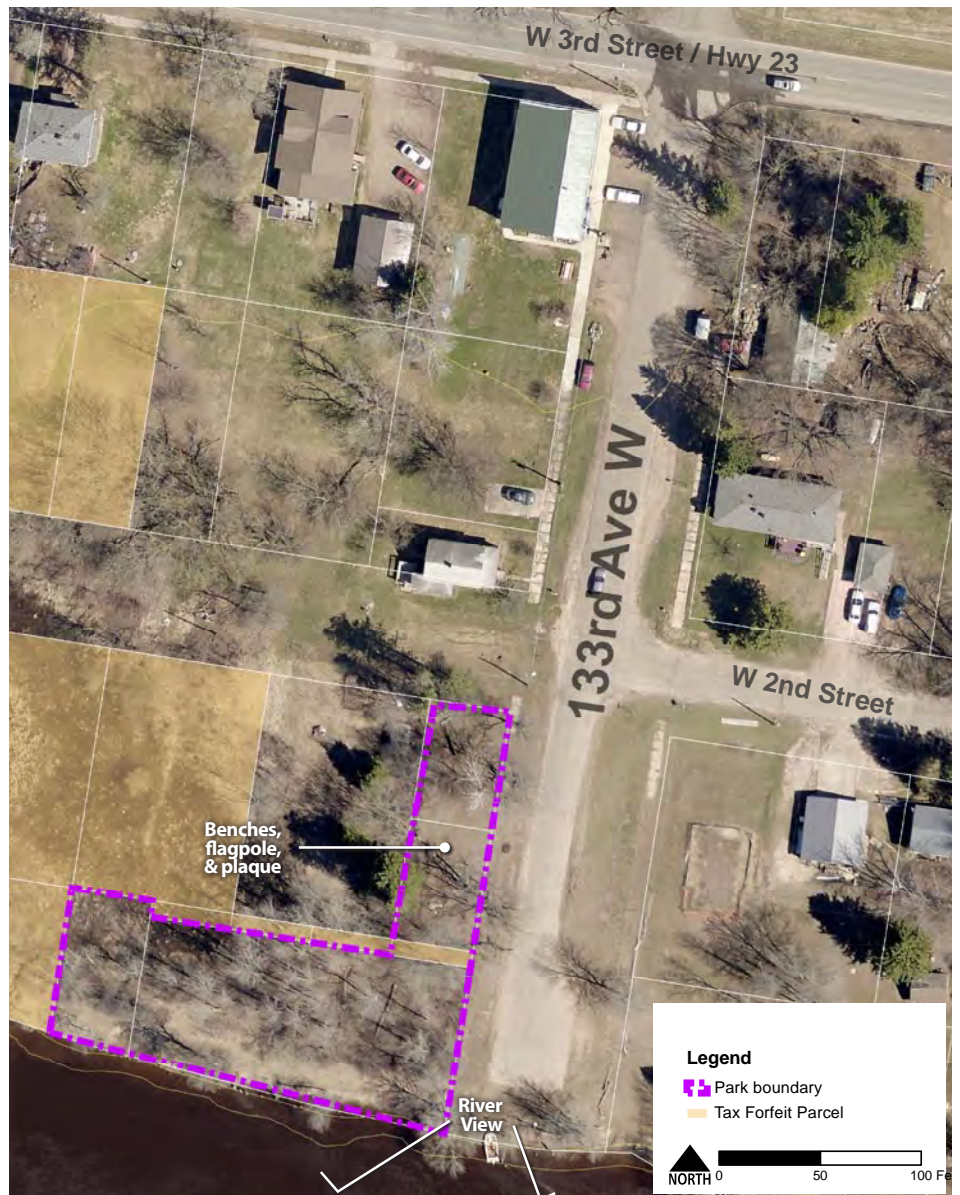
- » An American Fur Company post
- » The first railroad, LS&M Railroad, entered town on the north side of Hwy 23
- » The oldest house in Duluth is nearby
- » Old depot
- » An Ojibwe village
- » A steamboat landing
- » A Hotel was on the island across from the park
- » It was the first flat ground below the rapids
- » The head of navigation on the St. Louis River
- » A Cemetery
- » The Montauk passenger excursion boat used to stop here
- » The first jail in Duluth was nearby

## STRENGTHS/OPPORTUNITIES:

- » Great location for pelican viewing – potential to create and define bird watching areas
- » Panoramic views of the river exist in the park
- » History of the site includes many opportunities for interpretation
- » Potential location for river access, possible stop along the water trail
- » Opportunity for carry down canoe/kayak launch
- » Potential enhanced fishing access
- » Potential path and small clearing in the woods to encourage passive recreation in the park

## ISSUES:

- » Lack of identity and interpretive signage in the park
- » Sensitivity to adjacent land owners, clarify property boundaries visually
- » Wooded parcel is overgrown with buckthorn
- » Street and sidewalk infrastructure are deteriorating; lack of defined parking areas
- » Lack of wayfinding (At intersection of Hwy 23 and 133rd Ave)
- » Eroding river bank could be stabilized with in-water habitat structures to improve fish habitat such as eddy creating structures, habitat logs, etc.
- » Stormwater runs off the street directly into the St. Louis River without treatment

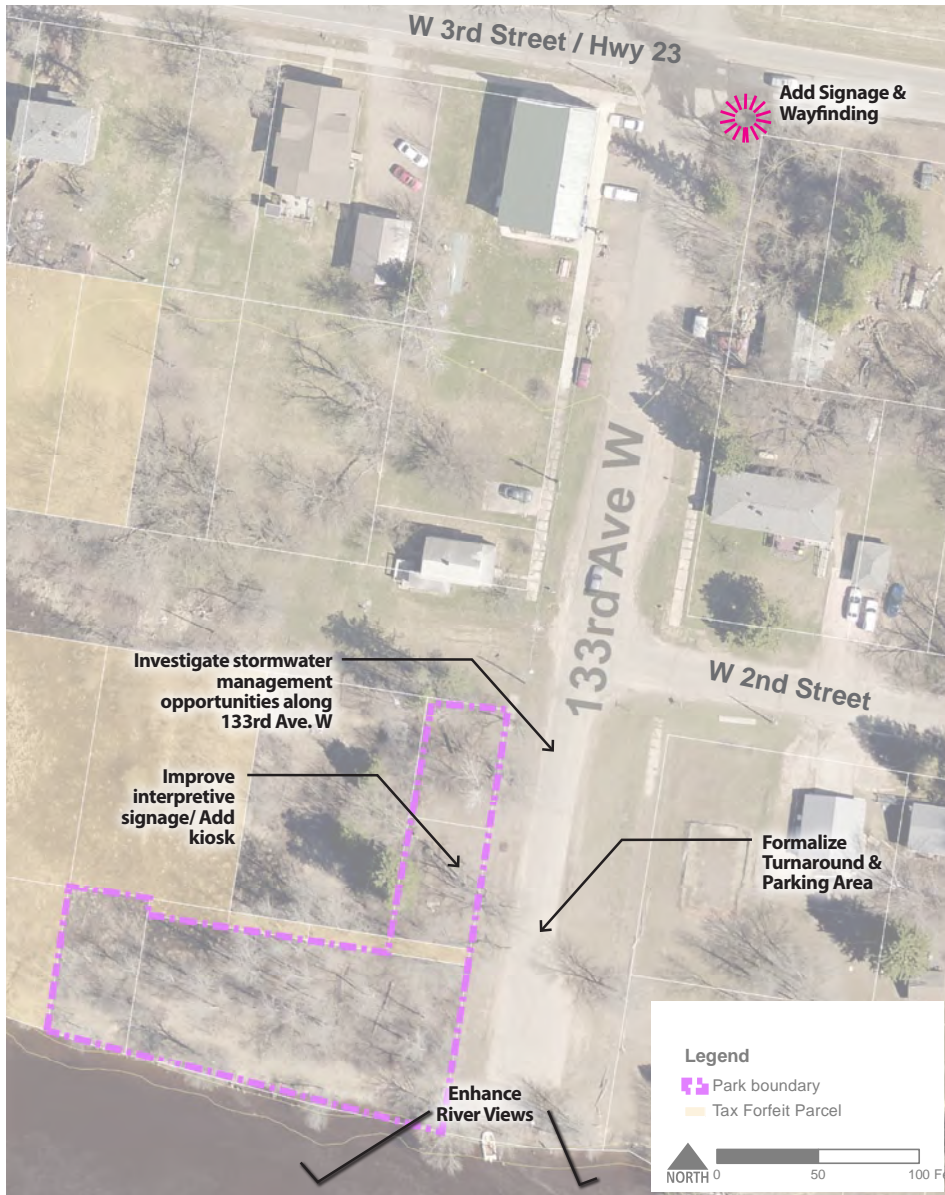


HISTORICAL PARK SITE INVENTORY

## Existing Conditions

At the southern end of 133rd Ave W, Historical Park covers a small piece of wet and wooded land adjacent to the river. There are no formal features to the park other than a small mown area adjacent to road that features granite benches, a flagpole, and a plaque commemorating the history of the park.

In December of 2015, an Archaeological Phase I Survey for Historical Park was completed in coordination with the Duluth Archaeology Center and the City of Duluth Department of Parks and Recreation. Historical and archaeological findings from this report will be considered during any future improvements to the park. In addition, the 2015 Ethnographic Study of Indigenous Contributions to the City of Duluth will be referenced in future park improvements.



HISTORICAL PARK SITE ANALYSIS

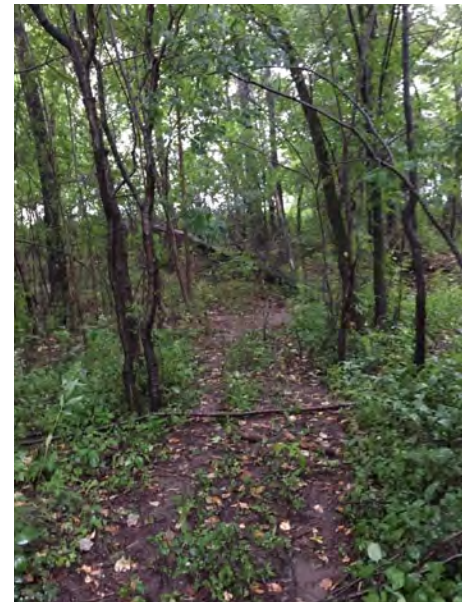
## Needs Assessment/Input Summary

At the stakeholder and community meetings, a desire was expressed for every park in the corridor to have basic amenities, including a bench, a picnic table, and a grill. Wayfinding and directional signage to each park, within each park, and to nearby trails are also desired as a way to promote the parks. Historical interpretation and archaeological considerations are important to this site.

A desire was expressed by stakeholders to clarify the name and provide identity to the park. The name “Historical Park” is new and unfamiliar to many residents. As part of Minnesota’s Clean Water, Land, and Legacy Amendment, there is a potential to write a grant for historical interpretation, art, and wayfinding elements for Historical Park.



Existing features include benches, a flag, and a historical monument



Current natural surface trails



Historical Park provides river access and is a local fishing spot

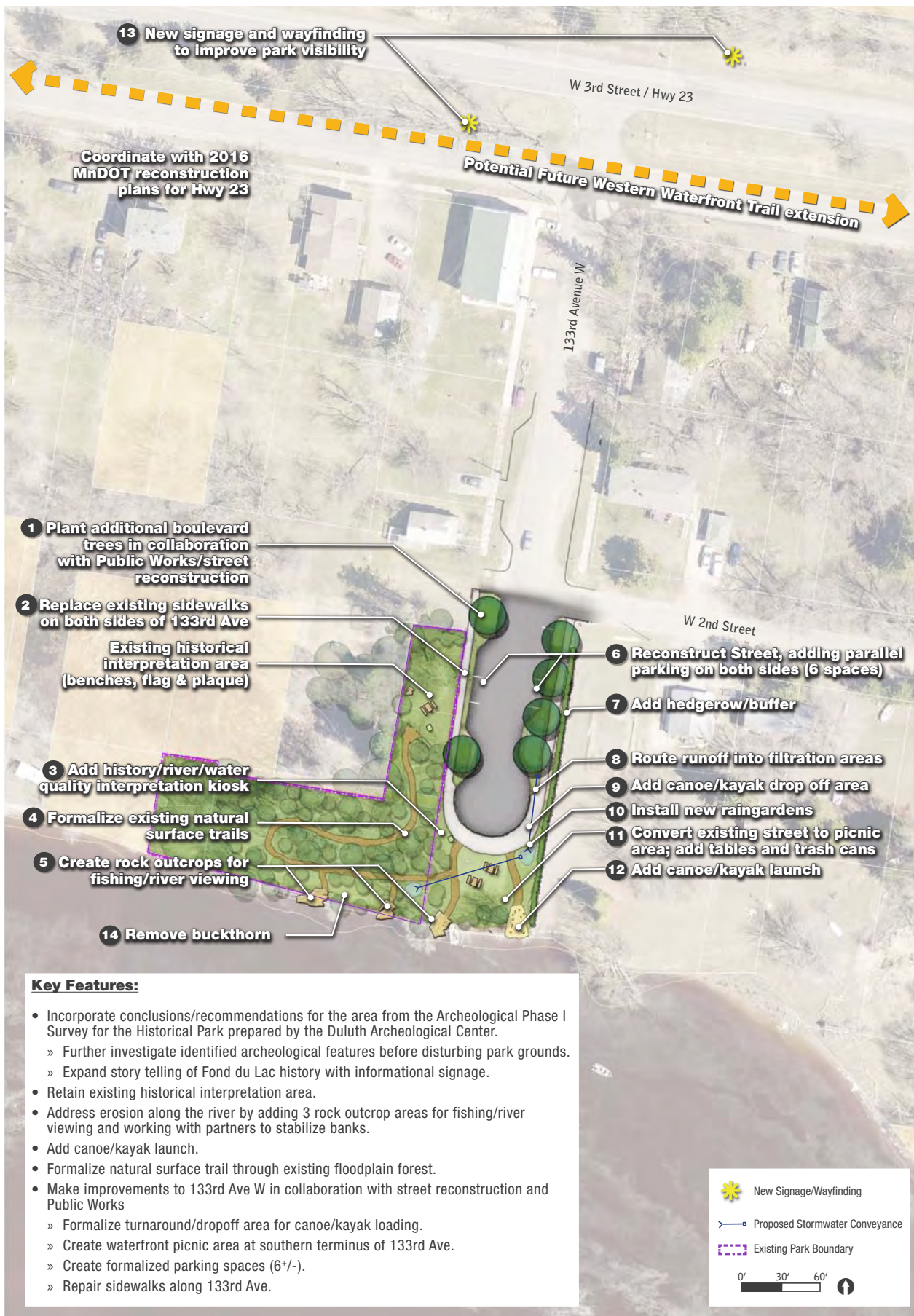


FIGURE 2.1 HISTORICAL PARK MINI-MASTER PLAN

# Concept Plan & Recommendations

The concept plan for Historical Park addresses identity, wayfinding, natural resources, and recreation improvements. Emphasis was placed on interpreting the history of the site, addressing river access, and providing small areas for gathering and enjoying the natural location along the St. Louis River. Parks will consult the Historic Preservation Commission and the Indigenous Commission moving forward with implementation of the plan.

## Phasing & Cost Estimates PHASE 1: SHORT-TERM



ACTION			COST
#	CATEGORY	DESCRIPTION	
3	Circulation	Install New Kiosk	\$7,500
4	Circulation	Formalize Existing Nature Surface Trails	\$2,100
7	Vegetation	Add hedgerow/buffer	\$1,600
12	Recreation	Build New Canoe/Kayak Launch	\$5,000
13	Circulation	Install New Park Wayfinding Sign	\$2,000
14	Vegetation	Remove buckthorn and other invasive species	\$5,000
Total Short-Term Improvement Costs			\$23,200

PHASE 2: LONG-TERM



FIGURE 2.3 HISTORICAL PARK LONG-TERM PHASING

ACTION			COST
#	CATEGORY	DESCRIPTION	
1	Vegetation	Plant Additional Boulevard Trees	\$2,800
2	Circulation	Replace Existing Sidewalk on 133rd Ave	\$21,000
5	Recreation	Create Rock Outcrop for Fishing/Viewing	\$60,000
6	Infrastructure	Reconstruct Street	\$-
8	Stormwater	Route street runoff into parkland	\$6,750
9	Stormwater	Install New Raingarden/Filtration Areas	\$6,750
10	Circulation	Add New Canoe/Kayak Drop-Off Area	\$5,600
11	Furnishings	Convert Existing Street Into Picnic Area - Add Picnic Tables & Trash Cans	\$5,000
Total Long-Term Improvement Costs			\$105,100
Total Short-Term Improvement Costs			\$ 23,200
Total Improvement Costs			\$128,300