

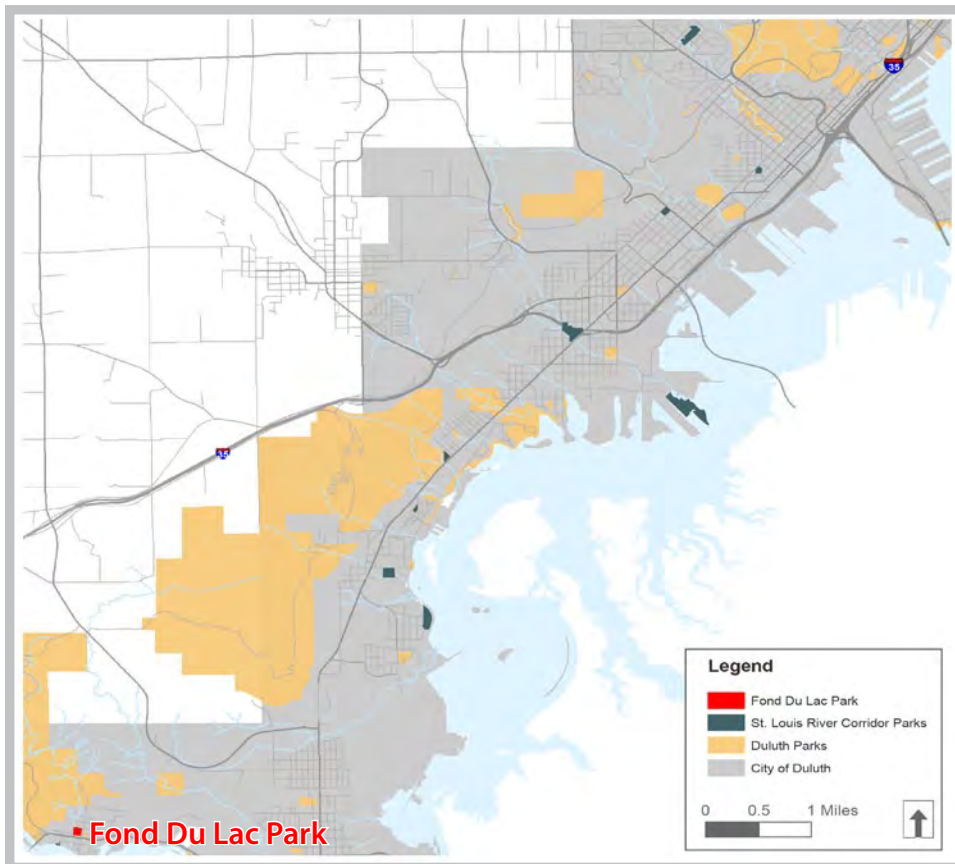


FOND DU LAC PARK

Summary and Overview

Fond du Lac Park is a 5-acre neighborhood park located on the far west side of Duluth. The park is bounded by Hwy 23 on the south and 131st Ave on the east side. Mission Creek forms the western boundary of the park. It is a channelized creek whose former alignment traveled from northwest to southeast through the park. This natural flow path has impacted stormwater drainage in the park. The flooding in 2012 damaged several park elements, including sediment deposits over the fields and play areas. The playground has been refurbished since then, and in 2014, new basketball and tennis courts were installed. The large, flat grassy area on the west side of the park, which has been used as a soccer field up until flood

damage occurred, is a rarity in Duluth. It is important to maintain this usable recreation space. About ¼ mile north of the park there is access to the Superior Hiking Trail and mountain bike trails.



FOND DU LAC PARK LOCATION MAP

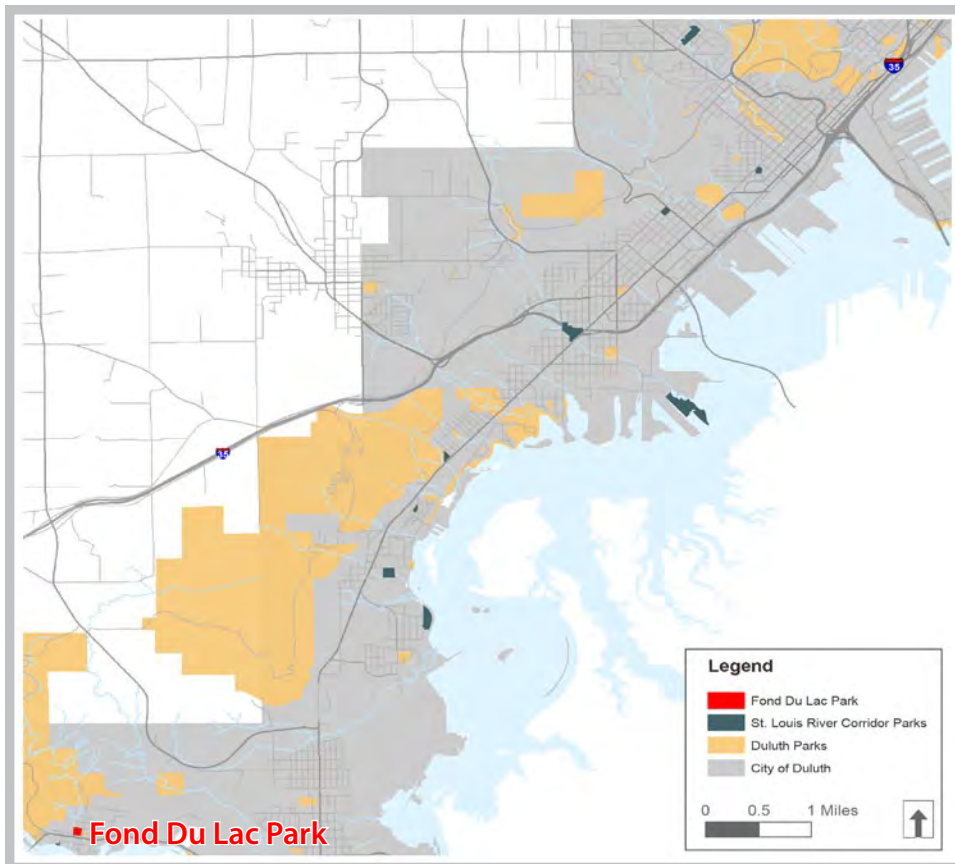


FOND DU LAC PARK

Summary and Overview

Fond du Lac Park is a 5-acre neighborhood park located on the far west side of Duluth. The park is bounded by Hwy 23 on the south and 131st Ave on the east side. Mission Creek forms the western boundary of the park. It is a channelized creek whose former alignment traveled from northwest to southeast through the park. This natural flow path has impacted stormwater drainage in the park. The flooding in 2012 damaged several park elements, including sediment deposits over the fields and play areas. The playground has been refurbished since then, and in 2014, new basketball and tennis courts were installed. The large, flat grassy area on the west side of the park, which has been used as a soccer field up until flood

damage occurred, is a rarity in Duluth. It is important to maintain this usable recreation space. About ¼ mile north of the park there is access to the Superior Hiking Trail and mountain bike trails.



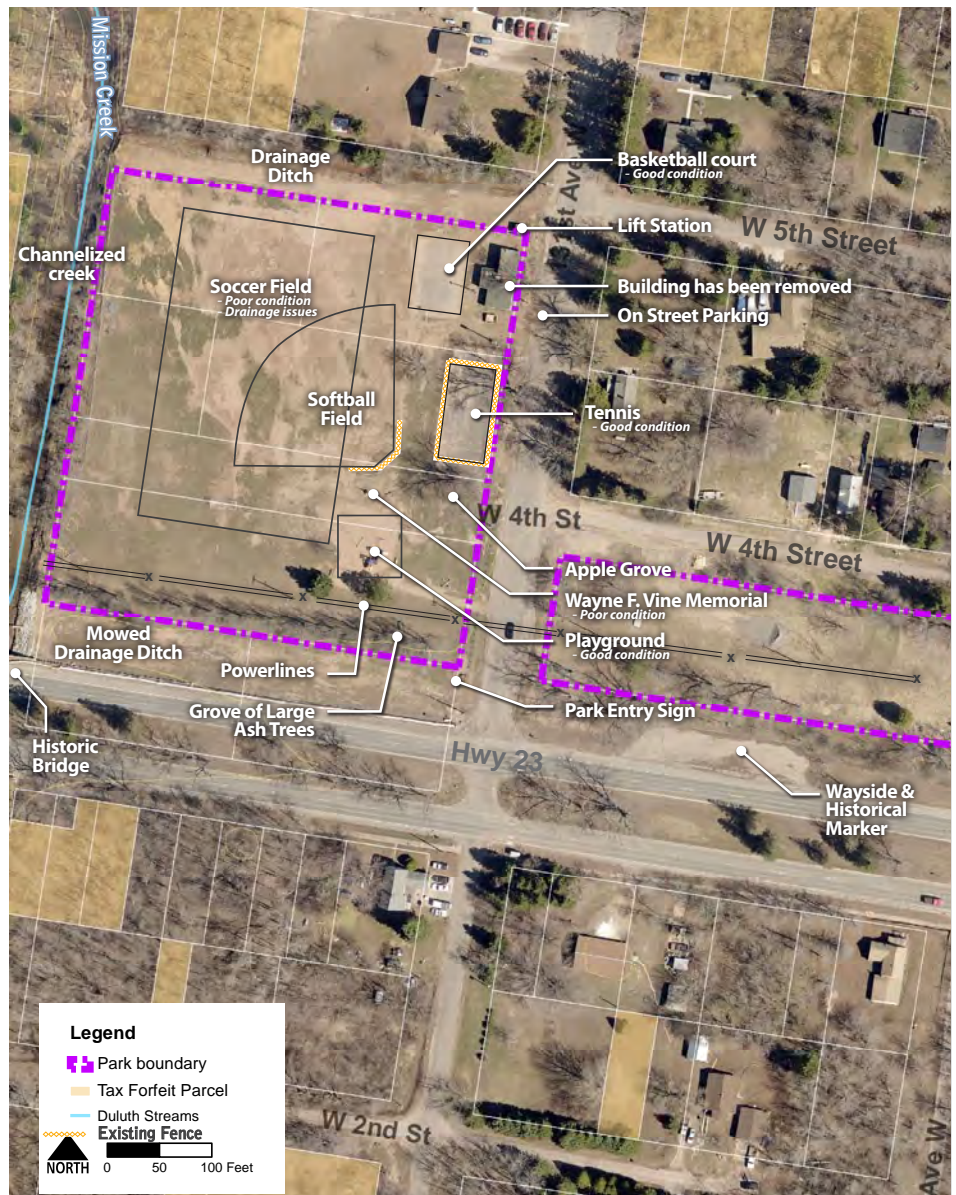
FOND DU LAC PARK LOCATION MAP

STRENGTHS/ OPPORTUNITIES:

- » Park facilities are in good condition: playground, basketball court, tennis court
- » Open field is nice asset, but opportunity for improved turf conditions
- » Park is in a good location for hosting mountain biking and trail running events – opportunity to make improvement to allow for even staging including parking, field improvements, and power supply
- » Mission Creek is a nice asset in the park – opportunity to improve its banks with native landscape buffer
- » Drainage ditches exist on the north and south sides of the park – opportunity to improve stormwater infiltration and filtration with native plants

ISSUES:

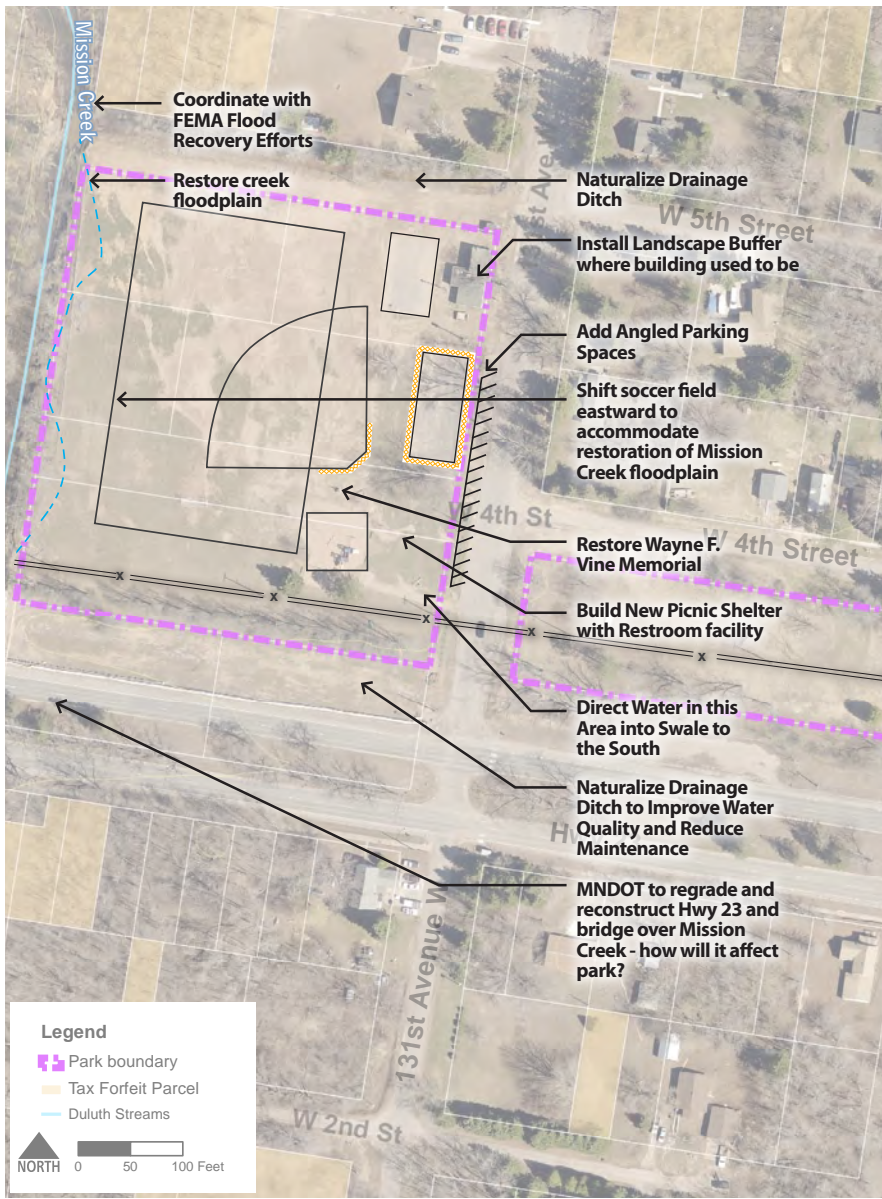
- » Memorial has been damaged – missing a piece
- » Stormwater drainage is an issue throughout the park, field damage still exists from 2012 flooding
- » Some ATV traffic through the park has been an issue



FOND DU LAC PARK SITE INVENTORY

Existing Conditions

Fond du Lac Park contains a playground, basketball court, and tennis court, which are all in good condition. Overlapping soccer and softball fields are in need of regrading and improved turf conditions. A park building was recently removed. An apple tree grove and memorial are located near the playground. The park has good vehicle access from Hwy 23 and pedestrian access for residents who live north of Hwy 23. Powerlines and poles run along the southern edge of the park between the recreation area and Hwy 23. An existing wayside and historical marker along Hwy 23 are part of the eastern portion of the park, which is unused today. Hwy 23 is currently being reconstructed by MNDOT.



FOND DU LAC PARK SITE ANALYSIS



View of the park looking south from the existing soccer field



Mission Creek passes through the western side of the park



The historic bridge over Mission Creek will be replaced with the Hwy 23 reconstruction in 2016



The existing play equipment is in good condition

Needs Assessment/Input Summary

At the stakeholder and community meetings, a desire was expressed for every park in the corridor to have basic amenities, including a bench, a picnic table, and a grill. Wayfinding and directional signage to each park, within each park, and to nearby trails are also desired as a way to promote the parks.

A desire was expressed by representatives of Arrowhead Youth Soccer to improve the soccer field conditions. The organization stopped using the field for practice after the flood damage occurred.

Since the park building has been removed, neighbors would like a picnic shelter to provide shade and be a gathering space in the park. A shelter could also be a good feature for housing power supplies for potential events in the park. A temporary bathroom is desired and was listed as a priority in the online survey.



FIGURE 2.4 FOND DU LAC PARK MINI-MASTER PLAN

Concept Plan & Recommendations

The concept plan for Fond du Lac Park addresses stormwater and natural resources, athletic field improvements, and new facilities. Emphasis was placed on maintaining and enhancing the neighborhood quality of the park, improving the general aesthetics and usability, and providing features needed for potential event users.

Natural resource improvements include restoring the streambank vegetation and creating an accessible floodplain, which would widen the area the stream flows through and provide a floodplain bench. While reducing the bank slope would mean losing a bit of the flats in the upland part of the park, it would make the stream much more accessible to anglers as well as kids just wanting to explore the stream.

Phasing & Cost Estimates PHASE 1: SHORT-TERM



FIGURE 2.5 FOND DU LAC PARK SHORT-TERM PHASING

ACTION			COST
#	CATEGORY	DESCRIPTION	
2	Vegetation	Improve Creek Buffer with Woodland Establishment-Saplings, Shade, and Understory Trees	\$ 9,500
3	Recreation	Improve Existing Soccer Field	\$50,000
4	Demolition	Remove Existing Miscellaneous Fence Components	\$ 2,500
5	Vegetation	Naturalize Drainage Swale (South)	\$ 1,600
6	Infrastructure	Improve playground drainage	\$10,000
7	Vegetation	Naturalize Drainage Swale (North)	\$ 1,600
8	Vegetation	Plant New Shade Trees West of Basketball Court	\$ 2,000
9	Vegetation	Create Landscape Buffer	\$ 1,600
12	Demolition	Remove Existing Backstop	\$ 500
14	Buildings	Build New Port-a-Potty Enclosure	\$ 2,000
15	Infrastructure	Build New Decorative Wood Fence	\$ 5,000
16	Circulation	Install New Park Wayfinding Sign	\$ 1,000
18	Circulation	Install New Kiosk	\$ 7,500
19	Circulation	Install New Park Sign & Wayfinding Sign	\$ 6,000
21	Vegetation	Remove invasive species	\$ 5,000

Total Short-Term Improvement Costs **\$105,800**

PHASE 2: LONG-TERM



FIGURE 2.6 FOND DU LAC PARK LONG-TERM PHASING

ACTION			COST
#	CATEGORY	DESCRIPTION	
1	Natural Resources	Restore Streambank and Create Accessible Floodplain	\$150,000
10	Furnishings	Additional Picnic Tables (4)	\$ 8,000
11	Parking	Create On-street Angled Parking	\$ 70,000
13	Public Art	Restore Wayne F. Vine Memorial	TBD
17	Buildings	Build new Picnic Shelter	\$ 60,000
20	Circulation	Add Pedestrian Crossing Amenity	\$ 10,000
Total Long-Term Improvement Costs			\$298,000
Total Short-Term Improvement Costs			\$105,800
Total Improvement Costs			\$403,800